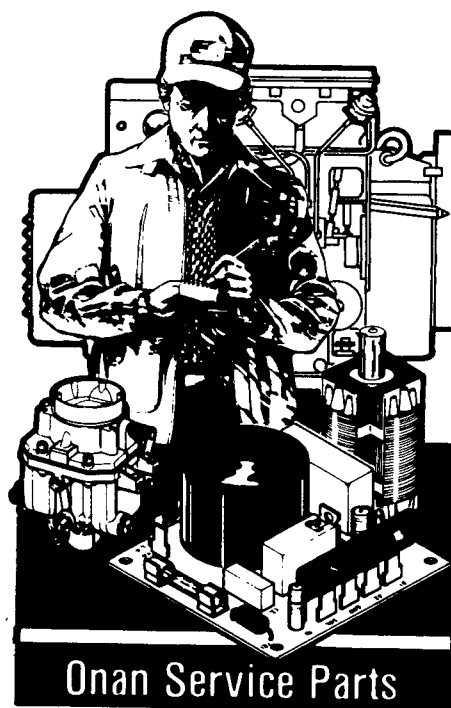


The following catalog  
has gaps in its page  
numbers, or doesn't  
have any numbers.  
We have chosen to  
leave the page  
numbering in the  
order that Acrobat  
assigns it.

---

**Onan**

**Parts  
Manual**  
10 CCK  
CCKB  
**GenSet**



Onan Service Parts

927-0223  
5-89 (SPEC A-E)  
Replaces 5-82 (SPEC A-E)  
Printed in U.S.A.

## Index

Adapter, Air Cleaner A12  
Adapter, Generator B8,C11  
Advance, Spark A9  
Ammeter C10  
Amplifier C10  
Armature, Generator B8,C11

Baffle, Breather Tube A6  
Base, Oil A5,C12  
Bearing, Camshaft A6  
Bearing, Crankshaft A6  
Bell, End B8,C11  
Block, Cylinder A6  
Block, Terminal B10,C10  
Blower, Generator B8  
Booster, Vacuum Speed B2  
Box, Breaker B6,C8  
Box, Control B10,C10  
Bracket, Fuel Pump C9  
Bracket, Governor B3  
Bracket, Timing C8  
Brush, Generator B8

Cable, Battery B10,C10  
Cable, Spark Plug B6  
Camshaft A8  
Carburetor (Gas Only) C3  
Carburetor, Gasoline A12  
Carburetor, Components (Gas-Gasoline) A14,B1  
Carburetor, Components (Gasoline) A14,B1  
Choke, Thermo-Magnetic B5  
Clamp, Muffler C9  
Cleaner, Air C4  
Clip, Bearing Stop B8  
Coil, Field B8,C11  
Coil, Ignition B6  
Commutator, Brush B8,C11  
Condenser B8,B10,C11  
Control, Generator B10  
Control, Remote C10  
Cover, Air Cleaner A12,C9  
Cover, Breaker Box B6  
Cover, Control B10,C10  
Cover, End Bell B8  
Cover, Valve A6  
Crankshaft A10

Diaphragm, Breaker Box B6

Element, Air Cleaner A12

Flywheel A10,C8  
Frame, Carrying C5  
Frame, Generator B8,C11

Gasket, Breaker Box B6  
Gasket, Carburetor Mounting A12  
Gasket, Exhaust Manifold A12  
Gasket, Fuel Pump A13,B2  
Gasket, Gearcase A11,C13  
Gasket, Intake Manifold A12  
Gearcase A11,C13  
Generator B8  
Guard, Scroll C7  
Guide, Valve A6

Harness, Wiring (Control To Engine) B10,C10  
Head, Cylinder A6  
Heater, Oil Base C6  
Hose, Breather A12  
Housing, Blower C7

Joint, Ball B3

Kit, Carburetor Repair A14,B1  
Kit, Decal B12  
Kit, Gasket B12  
Kit, Tune-Up B7

Line, Fuel - Flexible C3,C6,C9  
Line, Fuel-Gasoline A12,C2  
Link, Throttle B3

Magneto B6  
Manifold, Exhaust C9  
Manifold, Intake A12  
Muffler A12,C9

Paint, Green B12  
Pan, Air Cleaner A12  
Piston A8  
Plug, Spark B6  
Points, Ignition B6  
Pump, Fuel - Electric C9  
Pump, Fuel - Mechanical A12  
Pump, Oil A5

Regulator, Garretson C3  
Resistor, Fixed B10,C10  
Rig, Brush B8,C11  
Ring, Collector - Generator B8,C11  
Ring, Piston A8  
Rod, Connecting A8

Scroll, Air C7  
Seal, Oil-Crankshaft A6  
Seat, Valve A6  
Shield, Heat - Air Cleaner A12  
Shoe, Pole B8,C11  
Solenoid, Start B10  
Spring, Governor B3  
Starter, Readi-Pull B4  
Starter Components B4  
Strap, Ground B10  
Switch, Hatco C10  
Switch, Pressure - Oil A5,C10,C12  
Switch, Start-Stop B3,B10  
Switch, Vacuum Regulator C3

Tank, Day C3  
Tank, Fuel C2,C6  
Tappet, Valve A6  
Tube, Breather A6  
Tube, Exhaust A12

Valve, Exhaust A6  
Valve, Intake A6  
Valve, Solenoid (Gaseous Fuel) C3

Wheel, Blower C8

## INTRODUCTION

This catalog applies to the standard CCKB Generating Sets as listed below. Parts are arranged in groups of related items and each illustrated part is identified by a reference. Parts illustrations are typical. Using the MODEL and SPEC NO. from the set nameplate, select the Parts Key No. (1, 2, etc. in the last column) that applies to your set Model and Spec No. This Parts Key No. represents parts that differ between models. Unless otherwise mentioned in the description, parts are interchangeable between models. Right and left sides are determined by FACING the engine end (front) of the set.

### GENERATING SET DATA TABLE

MODEL & SPEC NO. £	ELECTRICAL DATA					PARTS KEY NO.
	WATTS	VOLTS	HERTZ	WIRE	PHASE	
10.0CCKB-3CP/* 10CCK AJ	10,000	120/240	60	†	1	1
8.0CCKB-53CP/* 8CCK AP	8,000	120/240	50	†	1	
10.0CCKB-3CR/* 10CCK FJ	10,000	120/240	60	†	1	2
10.0CCKB-4R/* 10CCK FC	10,000	120/208	60	4	3	
8.0CCKB-53CR/* 8CCK FP	8,000	120/240	50	†	1	
8.0CCKB-54R/*	8,000	120/240	50	4	3	
Mobile Generating Sets	See separate parts section following the standard parts section.					

\* - The Specification Letter advances (A to B, B to C, etc.) with manufacturing changes.

£ - New Model designations shown, begin during 1969. Previous designations did not use a decimal in the kW rating. EXAMPLE: 8.0CCKB was formerly 8CCKB, 10.0CCKB was formerly 10CCKB.

† - Set is reconnectible for 120 volt, 2 wire or 120/240 volt, 3 wire service.

**NOTE:** Previously the C designation was not used in the model

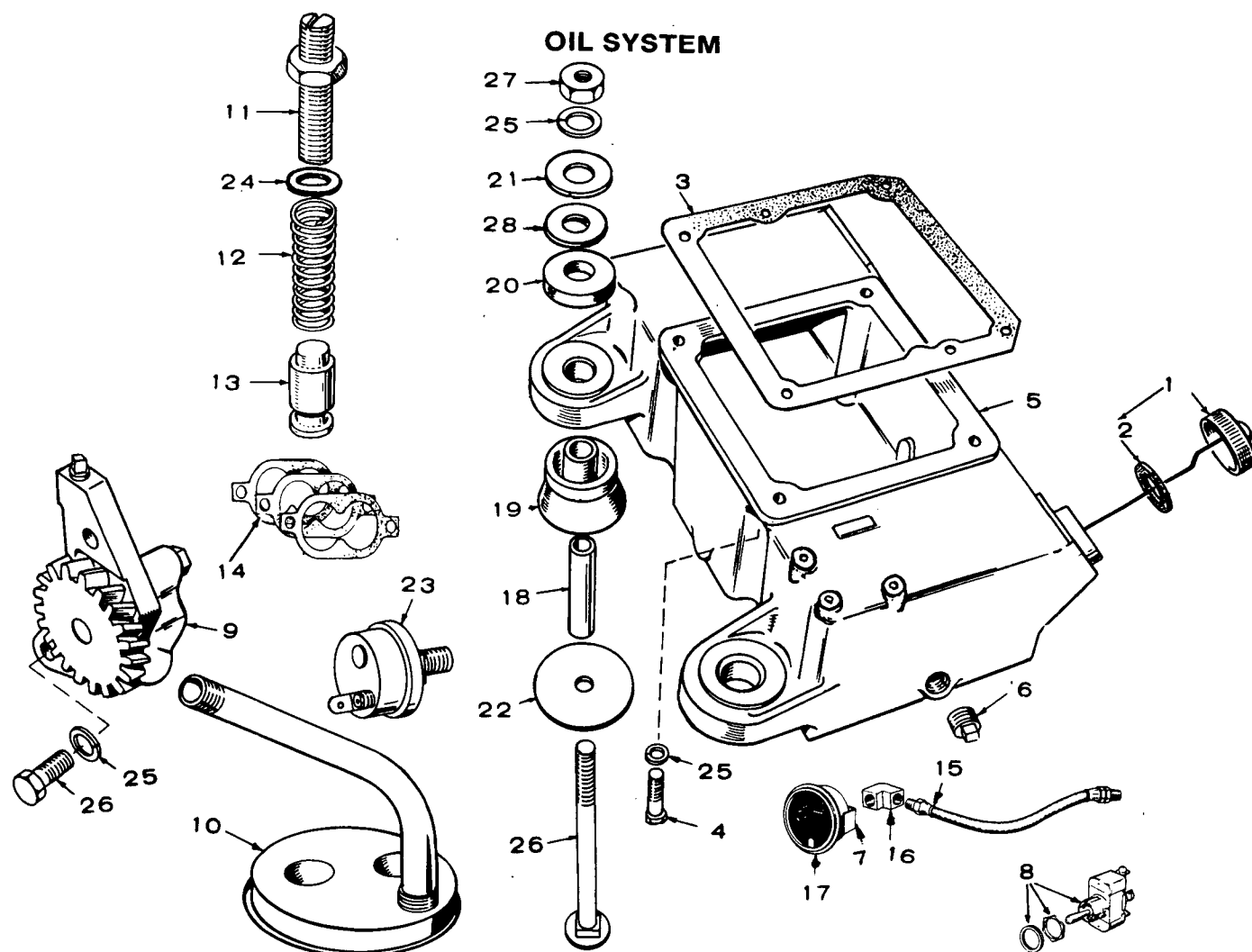
**NOTE:** Hertz is a unit of frequency equal to one cycle per second.

## STANDARD PARTS SECTION

This section contains the illustrated parts listings for the standard generator sets listed in the Data Table.

### NOTICE!

ITEMS REFERENCED AS **OPTIONAL** INDICATE PART IS FACTORY INSTALLED AND MAY NOT BE APPLICABLE TO ALL MODELS, FOR FIELD CONVERSIONS ADDITIONAL PARTS ARE USUALLY REQUIRED.

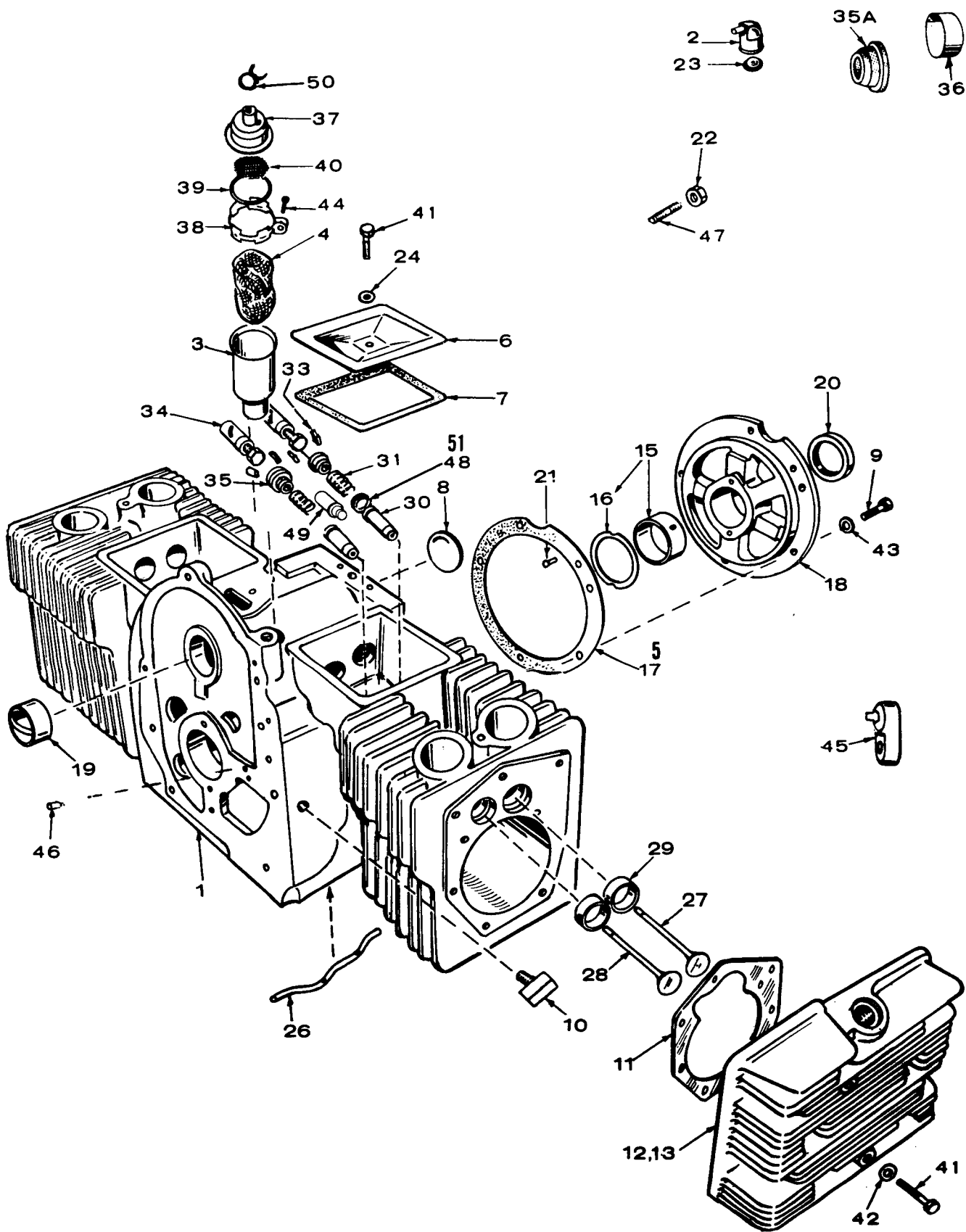


REF. NO.	PART NO.	QTY. USED	PART DESCRIPTION
1	123-0489	1	Cap and Indicator, Oil Fill
2	123-0191	1	Gasket, Oil Fill Cap
3	102-0158	1	Gasket, Oil Base Mounting
4	102-0455	4	Screw, Cap - Oil Base to Block (Special)
5	BASE, OIL		
	102-0686	1	Key 1
	102-0643	1	Key 2
6	505-0056	2	Plug - (1) Oil Drain (1) Oil Base Heater Hole
7	193-0031	1	U-Clamp (2")
8	308-0097	1	Switch, Toggle - Low Oil Pressure Momentary By-Pass
9	120-0491	1	Pump, Oil (Components Not Sold Separately)
10	120-0400	1	Cup, Oil Pump Intake
11	120-0187	1	Stud, Oil By-Pass (Includes Nut)
12	120-0140	1	Spring, By-Pass Valve
13	120-0398	1	Valve, By-Pass
14	120-0161	1	Gasket Kit, Oil Pump
15	501-0004	1	Line, Flexible - Oil Gauge
16	CONNECTOR - Oil Gauge		
	502-0017	1	Inverted Female
	502-0005	1	Female Elbow
17	193-0005	1	Gauge, Oil Pressure
	402-0349	1	Mounting Hardware (Includes Parts Marked *)

REF. NO.	PART NO.	QTY. USED	PART DESCRIPTION
18	402-0290	4	*Bushing, Spacer
19	CUSHION, VIBRATION		
	402-0284	2	Engine End
	402-0285	2	Generator End
20	402-0282	4	*Snubber, Shock Mounting
21	526-0014	4	*Washer (29/64" ID x 1-1/2" OD x 1/8" Thk)
22	526-0195	4	*Washer (29/64" ID x 3-1/4" OD x 1/8" Thk)
23	309-0010	1	Switch, Low Oil Pressure
24	526-0066	1	Washer, Oil Pressure Relief Valve Adjusting Screw (25/64" ID x 9/16" OD x 1/16" Thk)
25	WASHER, LOCK - SPRING		
	850-0040	2	Oil Pump Mounting (1/4")
	850-0050	4	Oil Base Mounting (3/8")
	850-0055	4	*Set Mounting (7/16")
26	SCREW CAP - HEX HEAD		
	800-0007	2	Oil Pump Mounting (1/4-20 x 1")
	800-0081	4	*Set Mounting - Key 1 (3/8-14 x 3-1/2")
	816-0212	4	Bolt, Carriage - Set Mounting - Key 2 (7/16-14 x 5-1/2")
27	862-0004	4	*Nut, Set Mounting (7/16-14)
28	526-0198	4	*Washer (5/8" ID x 1-1/2" OD x 1/16" Thk)

\* - Parts Included in 402-0349 Mounting Hardware Kit.

# CYLINDER BLOCK

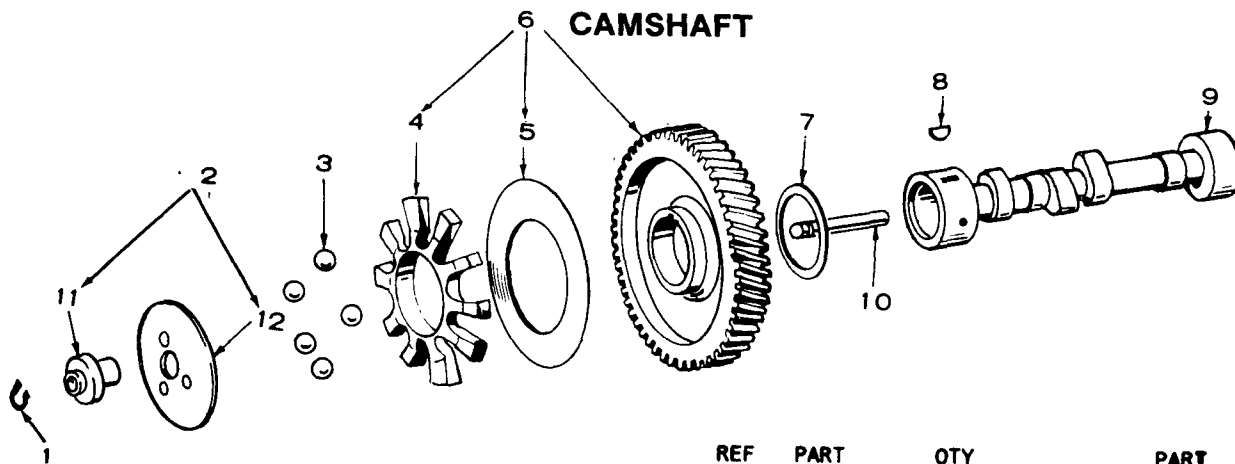


# CYLINDER BLOCK

REF NO.	PART NO.	QTY USED	PART DESCRIPTION	REF NO.	PART NO.	QTY USED	PART DESCRIPTION
1	110-2358	1	Block Assembly, Cylinder (Includes Parts Marked *)	30	110-0902	4	*Guide, Valve - When No Seals on Valves
2	123-0787	1	Cap, Breather Tube - Spec A Only	31	110-0539	4	Spring, Valve
3			Tube, Breather	33	110-0639	8	Lock, Valve and Spring Retaining
	123-0868	1	Spec A Only	34			Tappet, Valve
	123-0953	1	* Begin Spec B		115-0006	4	Standard
4	123-0865	1	Baffle, Breather Tube		115-0006-05	4	.005" Oversize
5	104-0776	AR	Shim, Rear Bearing Plate (.005")	35	110-0904	4	Rotocap, Valve - Gasoline Sets
6	110-0666	2	Cover, Valve Compartment	35A	110-0893	4	Retainer, Valve - Gaseous Fuel Sets
7	110-0667	2	Gasket, Valve Cover	36	110-1283	1	Cover, Timing Control (Also in Camshaft Group) - Key 1
8	517-0048	1	*Plug, Camshaft Expansion - Key 2	37	123-0954	1	Cap and Valve, Breather Tube - Begin Spec B
9	800-0512	5	*Screw, Cap - Hex Head - Rear Bearing Plate Mounting (Special)	38	123-0951	1	Clamp, Breather Tube Cap - Begin Spec B
10	502-0058	1	Tee, Oil Line	39	509-0117	1	"O" Ring Seal - Breather Tube Cap - Begin Spec B
11	110-0892	2	Gasket, Cylinder Head	40	123-0958	2	Screen, Breather Tube - Begin Spec B
12	110-0884	1	Head, Cylinder - RH (#2)	41			Screw, Cap - Hex Head (Special)
13	110-0883	1	Head, Cylinder - LH (#1)		110-0879	8	Cylinder Head
15			Bearing, Crankshaft - Front and Rear		114-0022	10	Cylinder Head
	101-0450	2	* Standard		114-0171	1	Cylinder Head - Mounts
	101-0450-02	2	.002" Undersize				Optional High Air Temperature Cut-Off Switch
	101-0450-10	2	.010" Undersize		800-0012	2	Valve Compartment Cover (1/4-20 x 2-1/4")
	101-0450-20	2	.020" Undersize				Washer, Flat - Cylinder Head Screws (11/32 ID x 23/32 OD x 1/8" Thk)
	101-0450-30	2	.030" Undersize				*Lockwasher, Bearing Plate Mounting (5/16")
16	104-0575	2	*Washer, Crankshaft Bearing Thrust (Special)	42	526-0122	18	Screw, Round Head - Breather Clamp (#8 x 3/4")
17	101-0115	1	*Gasket Kit, Bearing Plate	43	850-0045	5	Switch, High Air Temperature Cut-Off - Optional
18	101-0316	1	*Plate, Rear Bearing (Less Bearing)	44	809-0035	1	Pin, Roll
19	101-0367	2	§*Bearing, Camshaft Front and Rear (Precision)	45	309-0255	1	Stud, Rear Bearing Plate Mounting (Early Models)
20	509-0041	1	Seal, Bearing Plate (Included in Engine Gasket Kit 168-0103)	46	516-0141	2	*Gasket, Intake Valve Guide
21	516-0072	4	*Pin, Main Bearing Stop	47	520-0114	5	Guide, Valve (to Stop Oil Seepage) Used When Valves Have Seals
22	110-0445	5	*Nut, Hex - Rear Bearing Plate Mounting (Early Models) (Special)	48	110-3136	2	Clamp, Breather Hose
23	123-0315	1	Valve, Breather Tube - Spec A Only	49	110-1827	4	Seal, Valve - Intake
24	526-0063	2	Washer, Flat - Copper - Valve Compartment Cover (17/64 ID x 7/16 OD x 1/32" Thk)				
26	120-0386	1	*Tube, Crankcase Oil	50	503-0171	1	
27	110-1037	2	Valve, Intake	51	509-0090	2	
28	110-0880	2	Valve, Exhaust				
29			Insert, Valve Seat Exhaust				
	110-0872	2	* Standard				
	110-0872-02	2	.002" Oversize				
	110-0872-05	2	.005" Oversize				
	110-0872-10	2	.010" Oversize				
	110-0872-25	2	.025" Oversize				
			Intake (Stellite)				
	110-1000	2	* Standard				
	110-1000-02	2	.002" Oversize				
	110-1000-05	2	.005" Oversize				
	110-1000-10	2	.010" Oversize				
	110-1000-25	2	.025" Oversize				

\* - Parts Included in 110-2358 Cylinder Block Assembly.

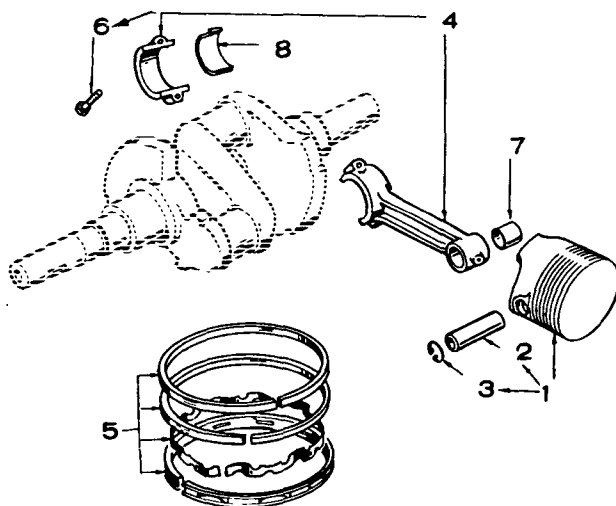
§ - NOTE: Units with Hi-Lift Cam use 101-0405 Bearing.



REF NO.	PART NO.	QTY USED	PART DESCRIPTION	REF NO.	PART NO.	QTY USED	PART DESCRIPTION
1	150-0078	1	Ring, Camshaft Center Pin	9	105-0238	1	Camshaft
2	150-1695	1	Kit, Governor Cup Replacement (Includes Parts Marked *)		105-0234	1	Key 2 - Includes Center Pin
3	510-0015	5	Ball, Fly - Governor				Key 1 - Includes Center Pin
4	150-1257	1	Spacer, Governor Flyball	10	150-0075	1	Pin, Camshaft Center
5	150-0077	1	Plate, Governor Flywheel	11	150-1519	1	*Hub, Governor Cup
6	105-0332	1	Gear, Camshaft - Timing	12	150-1520	1	*Cup, Governor
7	105-0541	1	Washer, Camshaft Gear Thrust				
8	515-0001	1	Key, Camshaft Gear Mounting				

\* - Parts Included in 150-1695 Governor Cup Replacement Kit.

## PISTON AND ROD



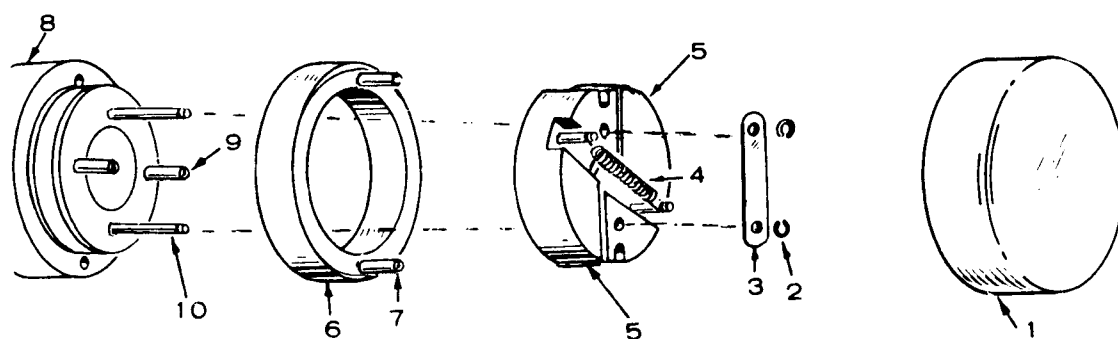
REF NO.	PART NO.	QTY USED	PART DESCRIPTION
1			Piston and Pin (Includes Retaining Rings)
			LPG
	112-0170	2	Standard
	112-0170-05	2	.005" Oversize
	112-0170-10	2	.010" Oversize
	112-0170-20	2	.020" Oversize
	112-0170-30	2	.030" Oversize
	112-0170-40	2	.040" Oversize
			Gasoline
	112-0179	2	Standard
	112-0179-05	2	.005" Oversize
	112-0179-10	2	.010" Oversize
	112-0179-20	2	.020" Oversize
	112-0179-30	2	.030" Oversize
	112-0179-40	2	.040" Oversize

REF NO.	PART NO.	QTY USED	PART DESCRIPTION
2	112-0069	2	Pin, Piston
3	112-0003	4	Ring, Piston Pin Retaining
4	114-0203	2	Rod, Connecting (Includes Bushing and Bolts)
5			Ring Set, Piston
			Gasoline
	113-0153	2	Standard
	113-0153-05	2	.005" Oversize
	113-0153-10	2	.010" Oversize
	113-0153-20	2	.020" Oversize
	113-0153-30	2	.030" Oversize
	113-0153-40	2	.040" Oversize
			LPG Only
	113-0238	2	Standard
	113-0238-05	2	.005" Oversize
	113-0238-10	2	.010" Oversize
	113-0238-20	2	.020" Oversize
	113-0238-30	2	.030" Oversize
	113-0238-40	2	.040" Oversize
6	805-0010	4	Bolt, Place - Connecting Rod Cap (Special)
7	114-0036	2	Bushing, Piston Pin - Connecting Rod
8			Bearing, Connecting Rod
	114-0188	4	Standard
	114-0188-02	4	.002" Undersize
	114-0188-10	4	.010" Undersize
	114-0188-20	4	.020" Undersize
	114-0188-30	4	.030" Undersize



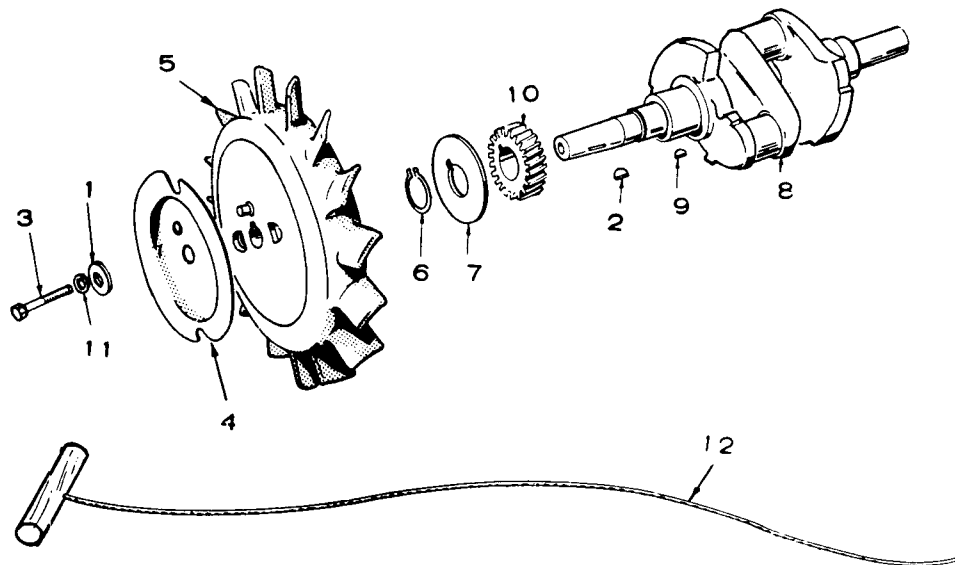
# SPARK ADVANCE MECHANISM

## KEY 1



REF. NO.	PART NO.	QTY. USED	PART DESCRIPTION
1	110-1283	1	Cover, Spark Advance Mechanism - Key 1
2	518-0185	2	Ring, Retaining - Key 1
3	160-0726	1	Retainer, Timing Weights Key 1
4	160-0727	1	Spring, Timing - Key 1
5	160-0789	2	Weight, Timing (Includes Pin and Magnet) - Key 1
6	160-0791	1	Cam, Timing (Includes Roll Pins) Key 1
7	516-0144	2	Pin, Roll - Key 1
8	105-0234	1	Camshaft (Includes Roll and Grooved Straight Pins) - Key 1
9	516-0144	2	Pin, Roll - Key 1
10	516-0146	2	Pin, Straight, Grooved Key 1

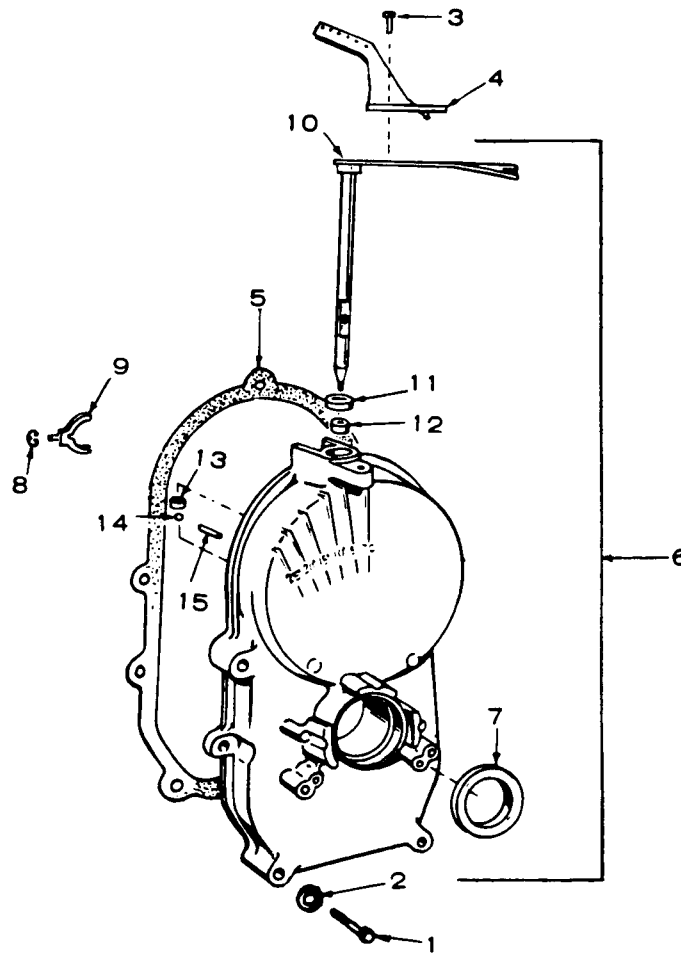
## CRANKSHAFT AND FLYWHEEL



REF. NO.	PART NO.	QTY. USED	PART DESCRIPTION
1	526-0017	1	Washer, Flat - Wheel Mounting (15/32 ID x 1-1/4" OD x 1/4" Thk)
2	515-0098	1	*Key, Wheel Mounting
3	104-0170	1	Screw, Wheel Mounting (Special)
4	192-0308	1	Sheave, Starter Rope
5	FLYWHEEL		
	160-0761	1	Key 1 (Includes Magnets)
	134-0591	1	Key 2
6	518-0014	1	Lock, Crankshaft Gear Washer
7	104-0043	1	Washer, Crankshaft Gear Retaining (Special)
8	104-1323	1	Crankshaft (Includes Parts Marked *)
9	515-0001	1	*Key, Crankshaft Gear Mounting
10	104-0032	1	Gear, Crankshaft (Timing)
11	850-0055	1	Lockwasher, Flywheel Mounting (7/16")
12	192-0083	1	Rope, Manual Starting - Key 1

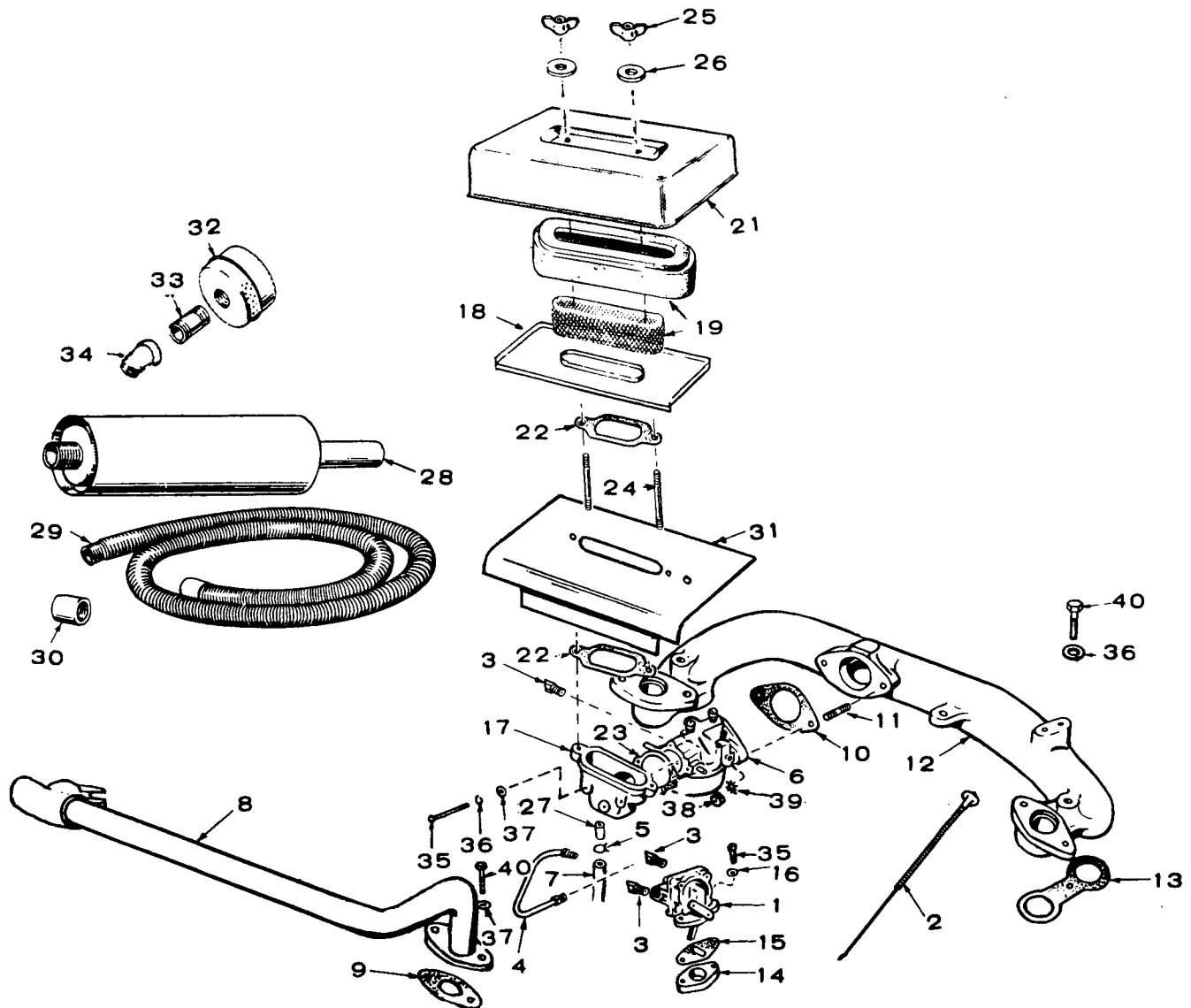
\* - Parts included in 104-1323 Crankshaft Kit.

# GEARCASE



REF. NO.	PART NO.	QTY. USED	PART DESCRIPTION
1	SCREW, CAP - HEX HEAD		
	800-0032	4	5/16-18 x 1-3/4"
	800-0034	1	5/16-18 x 2-1/4"
2	526-0065	5	Washer, Flat - Copper (21/64" ID x 9/16" OD x 1/16" Thk)
3	815-0181	1	Screw, Tapping - Hex Head with External Tooth Lockwasher (#10-32 x 1/2")
4	150-1073	1	Arm, Extension
5	103-0011	1	Gasket, Gearcase
6	103-0644	1	Gearcase Assembly (Includes the following components)
7	509-0040	1	Seal, Oil - Crankshaft
8	518-0129	1	Ring, Retaining - Yoke
9	150-0620	1	Yoke, Governor Shaft
10	150-1008	1	Shaft and Arm, Governor
11	509-0008	1	Seal, Oil
12	510-0013	1	Bearing, Needle
13	510-0008	1	Bearing, Needle
14	510-0014	1	Ball, Bearing
15	516-0130	1	Pin, Roll

# FUEL SYSTEM



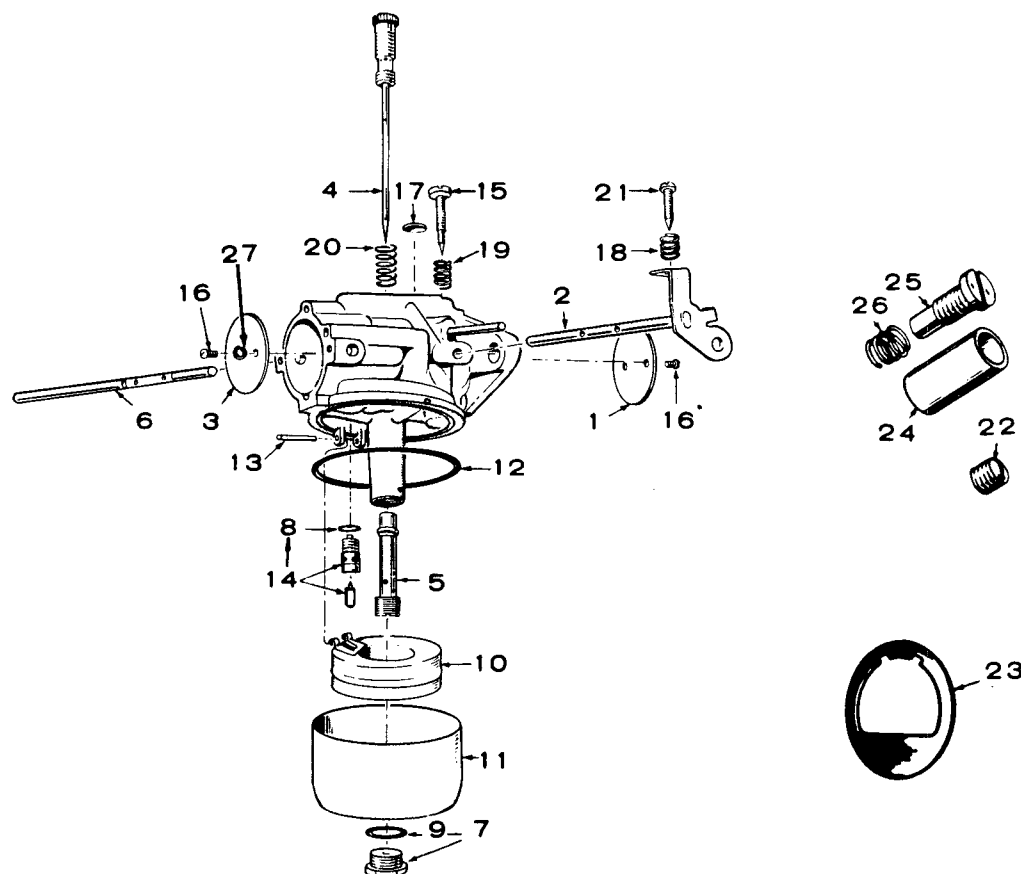
## FUEL SYSTEM

PART NO.	QTY. USED	PART DESCRIPTION
-1792	1	£Pump, Fuel - Kit (Includes Pump 149-1393)
-1024	1	Rod, Fuel Pump Primer - Used on some early models - Key 1
-0065	3	Elbow - (1) Carburetor Inlet (2) Fuel Pump
E, FUEL-PUMP TO CARBURETOR		
-1070	1	Spec A Only
-1096	1	Begin Spec B
-0170	2	Clamp, Hose
RBURETOR, GASOLINE-KEY 1, MANUAL CHOKE e Separate Group for Components)		
-0322	1	#Spec A Only
-0774	1	Spec A Replacement Kit (Includes a 141-0689 Carburetor)
-0689	1	Begin Spec B
RBURETOR, GASOLINE-KEY 2, ELECTRIC CHOKE e Separate Group for Components)		
-0323	1	#Spec A Only
-0792	1	Spec A Replacement Kit (Includes a 141-0690 Carburetor)
-0690	1	Begin Spec B
SE, BREATHER		
-0488	1	Spec A Only
-0546	1	Begin Spec B
-0944	1	Manifold, Exhaust
-0973	2	Gasket, Exhaust Manifold
-0281	1	£Gasket, Carburetor Mounting
-0526	2	Stud, Carburetor Mounting
NIFOLD, INTAKE		
-0950	1	Key 2
-1081	1	Key 1
-1231	1	Sets with Vacuum Switch for Gas Solenoid - Key 2
-0013	2	Gasket, Intake Manifold to Cylinder Block
-0045	1	Spacer, Fuel Pump Mounting
-0003	2	£Gasket, Fuel Pump Mounting
-0063	2	Washer, Flat - Copper - Pump Mounting - Used Spec A through Serial #3479B6 During Spec D
APTER, AIR CLEANER		
-0760	1	Spec A Only
-1304	1	Begin Spec B
N, AIR CLEANER		
-0828	1	Spec A Only
-0595	1	Begin Spec B
-0636	1	Element and Retainer, Air Cleaner

REF. NO.	PART NO.	QTY. USED	PART DESCRIPTION
20	505-0274	2	Plug, Pipe
21	140-0594	1	Cover, Air Cleaner
22	140-0584	2	Gasket, Air Cleaner
23	GASKET, ADAPTER TO CARBURETOR		
	140-0585	1	Spec A Only
	140-0921	1	Spec E, Key 1
	140-1302	1	Begin Spec B
24	520-0621	2	Stud, Air Cleaner
25	865-0020	2	Nut, Wing - Air Cleaner (1/4-20)
26	526-0063	2	Washer, Flat - Air Cleaner (17/64 ID x 7/16 OD x 1/32" Thk)
27	TUBE, ADAPTER TO BREATHER HOSE		
	123-0893	1	Key 2
	123-0732	1	Key 1
28	155-0077	1	Muffler, Exhaust
29	155-0492	1	Tube (36"), Flexible Exhaust
30	505-0036	1	Coupling (1"), Exhaust Pipe
31	140-0829	1	Shield, Air Cleaner Heat
32	155-0916	2	Muffler, Exhaust - Key 1
33	505-0004	2	Nipple, Exhaust - Key 1
34	505-0333	2	Elbow, Exhaust (45°) - Key 1
35	SCREW, CAP-HEX HEAD		
	813-0108	2	Air Cleaner Adapter Mounting (10-32 x 1-1/2")
	806-0009	2	Fuel Pump Mounting (1/4-20 x 1-1/4")
36	WASHER, LOCK-SPRING		
	850-0030	2	Air Cleaner Adapter Mounting (#10)
	850-0050	2	Intake Manifold Mounting (3/8")
37	WASHER, FLAT		
	526-0241	2	Air Cleaner Adapter Mounting (.188 ID x .438 OD x .049 Thk)
	526-0122	4	Exhaust Manifold Mounting - Early Models (11/32 ID x 23/32 OD x 1/8" Thk)
38	868-0002	2	Nut, Hex - Carburetor Mounting (5/16-24)
39	854-0017	2	Washer, Shakeproof - Carburetor Mounting (5/16")
40	SCREW, CAP-HEX HEAD		
	821-0016	4	Exhaust Manifold Mounting (5/16-18 x 3/4")
	800-0057	2	Intake Manifold Mounting (3/8-16 x 2-3/4")

# - Carburetors no longer available - order Replacement Kit.  
£ - Mounting Gasket supplied with new unit.

# CARBURETOR PARTS (CARTER)



REF. NO.	PART NO.	QTY. USED	PART DESCRIPTION
£	CARBURETOR, GASOLINE		
	143-0322	1	Manual Choke - Key 1
	143-0323	1	Electric Choke - Key 2
£	CARBURETOR, GAS-GASOLINE		
	143-0338	1	Manual Choke - Key 1
	143-0339	1	Electric Choke - Key 2
£	143-0340	1	Carburetor, Gas Only
	143-0332	1	Repair Kit (Includes Parts Marked †)
	143-0201	1	†Gasket Kit (Includes Parts Marked *)
	141-0281	1	*Gasket, Carburetor Flange
1	143-0202	1	Valve, Throttle
2	143-0331	1	Shaft and Lever, Throttle
3	VALVE, CHOKE		
	143-0220	1	# Manual Choke - Key 1
	143-0204	1	# Electric Choke - Key 2
4	143-0330	1	# †Needle, Idle Jet and High Speed Adjusting
5	143-0329	1	# †Nozzle
6	SHAFT, CHOKE		
	143-0221	1	# Manual Choke - Key 1
	143-0315	1	# Electric Choke - Key 2
7	143-0208	1	Screw and Gasket, Bowl
8	143-0015	1	# *Gasket, Fuel Inlet Valve
9	143-0209	1	*Gasket, Bowl Screw
10	143-0105	1	# Float and Lever
11	143-0210	1	Bowl
12	143-0077	1	*Gasket, Bowl Ring

REF. NO.	PART NO.	QTY. USED	PART DESCRIPTION
13	141-0703	1	†#Pin, Float Lever
14	143-0341	1	#†Valve, Fuel Inlet
15	143-0213	1	Screw, Idle Adjusting (2 for Gas-Gasoline Units) (Special)
16	812-0014	4	†Screw (#3-48 x 3/16) - Choke and Throttle Valve
17	143-0110	1	Plug, Expansion
18	143-0214	1	Spring, Throttle Adjusting Screw
19	143-0112	1	Spring, Idle Adjusting Screw (2 for Gas-Gasoline Units)
20	143-0114	1	#Spring, High Speed Adjusting Needle
21	143-0215	1	Screw, Throttle Lever, Adjusting (Special)
22	505-0008	1	Plug (1/8") - Gas Only Unit
23	143-0342	1	#Diaphragm, Fuel Splash
24	145-0308	1	Tube, Gas Inlet - Gas and Gas-Gasoline Units
25	148-0589	1	Needle, Gas Adjusting - Gas and Gas-Gasoline Units
26	148-0590	1	Spring, Gas Adjusting - Gas and Gas-Gasoline Units
27	854-0003	4	†Washer, Lock-It (#3)

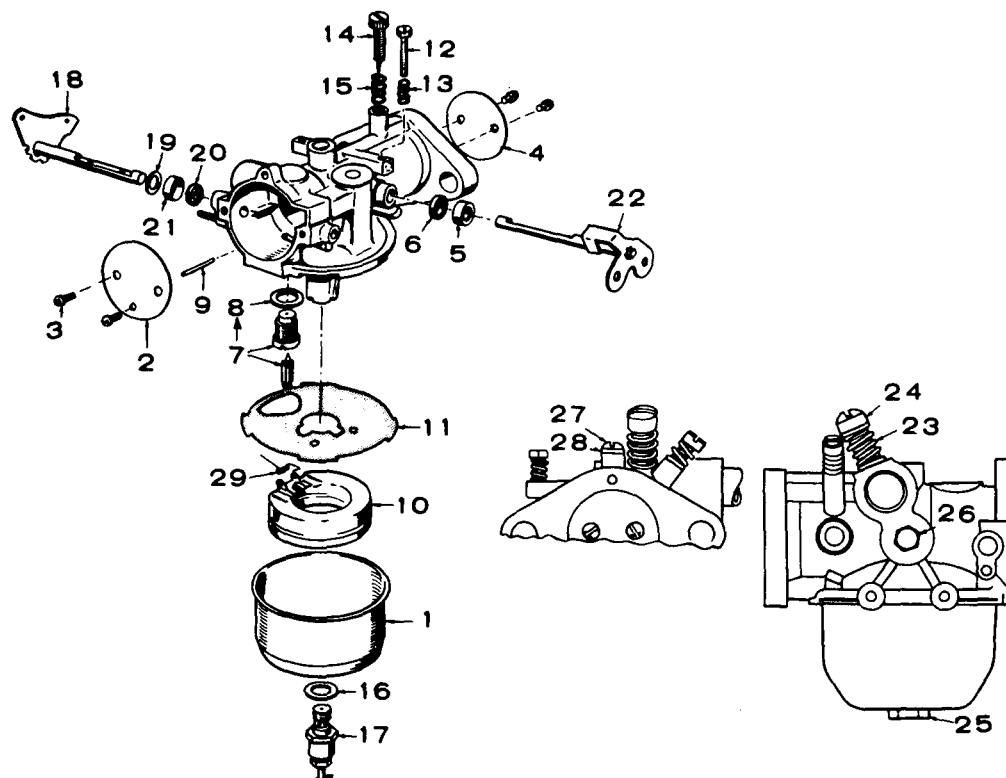
# - Parts not used in Gas Only Carburetor.

\* - Included in 143-0201 Gasket Kit.

† - Included in 143-0332 Repair Kit.

£ - Mounting Gasket supplied with new unit.

# CARBURETOR PARTS (ZENITH)



REF. NO.	PART NO.	QTY. USED	PART DESCRIPTION
CARBURETOR, GASOLINE			
	141-0689	1	Manual Choke - Key 1
	141-0690	1	Electric Choke - Key 2
CARBURETOR, GAS-GASOLINE			
	141-0721	1	Manual Choke - Key 1
	141-0722	1	Electric Choke - Key 2
£	141-0726	1	Carburetor, Gas Only
	141-0747	1	Repair Kit (Includes Parts Marked *)
	141-0748	1	Gasket Kit (Includes Parts Marked †)
	141-0281	1	†*Gasket, Carburetor Flange
1	141-0708	1	Bowl, Fuel
2	141-0741	1	Plate, Choke (Not used on Gas Only Units)
3	141-0698	4	Screw and Washer - Choke and Throttle Plate Mounting (2 used on Gas only units)
4	141-0706	1	Plate, Throttle
5	141-0705	1	*Retainer, Seal
6	141-0661	1	†*Seal, Rubber
7	141-0830	1	*Valve Seat Assembly, Fuel (Not used on Gas only units)
8	141-0811	1	†Washer, Fuel Valve Seat (Not used on Gas only units) (Special)
9	141-0703	1	*Shaft, Float (Not used on Gas only units)
10	141-0702	1	Float Assembly (Not used on Gas only units)
11	141-0701	1	†*Gasket, Bowl to Body
12	141-0700	1	Screw, Throttle Stop (Special)
13	141-0711	1	Spring, Throttle Stop
14	NEEDLE, IDLE ADJUSTING		
	141-0713	1	Gasoline and Gas Only Units
	141-0713	2	Gas-Gasoline Units

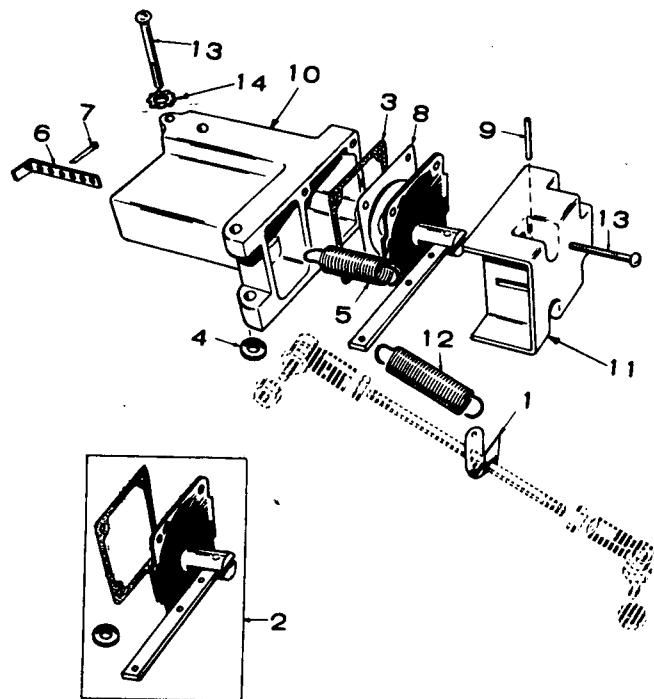
REF. NO.	PART NO.	QTY. USED	PART DESCRIPTION
15	SPRING, IDLE NEEDLE		
	141-0710	1	Gasoline and Gas Only Units
	141-0710	2	Gas-Gasoline Units
16	141-0077	1	†*Washer, Main Jet Assembly (Special)
17	141-0712	1	Jet Assembly (Adjustable), Main (Not used on Gas only units)
18	SHAFT, CHOKE (Not Used On Gas Only Units)		
	141-0742	1	Manual Choke Units
	141-0679	1	Electric Choke Gasoline Units
	141-0679	1	Electric Choke Gas-Gasoline Units
19	141-0699	1	Washer - Key 1 (Not used on Gas only units) (Special)
20	141-0697	1	†*Seal, Felt - Key 1 (Not used on Gas only units)
21	141-0203	1	*Retainer, Felt Seal - Key 1 (Not used on Gas only units)
22	141-0709	1	Shaft and Lever, Throttle
23	141-0733	1	Spring, Main Gas Needle - Gas and Gas-Gasoline Units
24	141-0734	1	Needle, Main Gas Adjusting - Gas and Gas-Gasoline Units
25	141-0736	1	Nut, Bowl - Gas Only Units
26	141-0737	1	Plug, Pipe (1/8") - Gas Only Units
27	141-0738	1	Screw - Gas Only Units (Special)
28	141-0739	1	Washer - Gas Only Units (Special)
29	141-0799	1	*Spring, Float (Not Used on Gas Only Carburetors)

£ - Mounting Gasket supplied with new unit.

\* - Included in 141-0747 Repair Kit.

† - Included in 141-0748 Gasket Kit.

## VACUUM SPEED BOOSTER



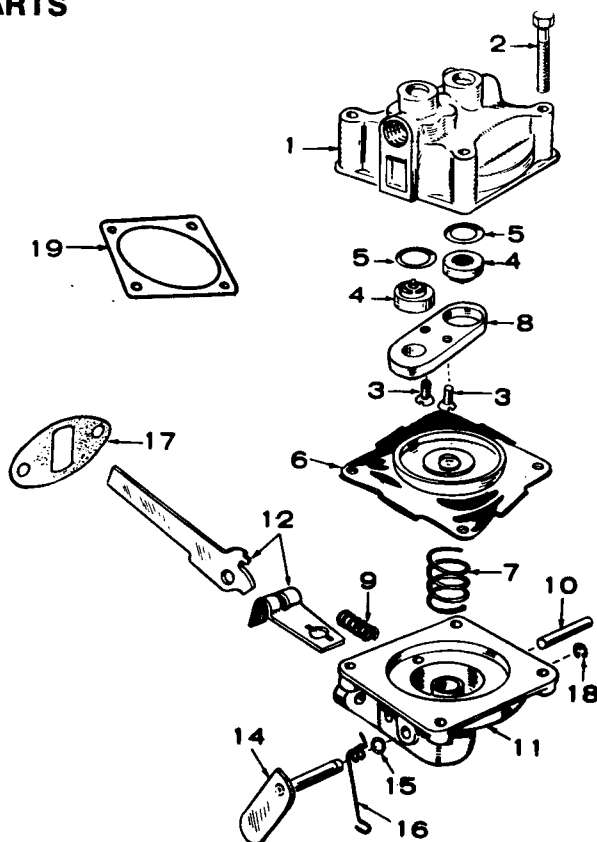
REF. NO.	PART NO.	QTY. USED	PART DESCRIPTION
	150-1030	1	Kit, Vacuum Speed Booster Replacement (Includes Parts Marked *)
1	150-0430	1	Bracket, Spring to Governor Link
2	150-1031	1	*Kit, Diaphragm Replacement (Includes Gaskets)
3	150-0668	1	*Gasket, Diaphragm Plate
4	150-0425	1	*Gasket, Booster to Manifold
5	150-1354	1	*Spring, Internal
6	150-0376	1	*Bracket, Internal Spring Adjustment
7	516-0039	1	*Pin (3/32 x 5/8"), Cotter Adjusting Bracket
8	150-0666	1	*Plate, Diaphragm
9	516-0085	1	*Pin (3/32 x 3/4") - Diaphragm Lever Pivot
10		1	*Housing, Vacuum Booster (Not Sold Separately)
11		1	*Cover, Vacuum Booster Housing (Not Sold Separately)
12	150-0471	1	*Spring, External
13	SCREW		
	815-0148	4	*Cover, Housing - Slotted, Hex Head (8-32 x 7/8")
	813-0110	2	Vacuum Speed Booster Mounting - Round Head, Machine (10-32 x 2")
14	853-0008	2	Washer, Shakeproof - Vacuum Speed Booster Mounting - ET (#10)

## FUEL PUMP PARTS

REF. NO.	PART NO.	QTY. USED	PART DESCRIPTION
	149-1393	1	£ Pump, Fuel (Illustrated in Fuel System Group)
	149-0526	1	Repair Parts Kit (Includes Parts Marked *)
1		1	Body, Upper (Not Sold Separately)
2	815-0148	4	Screw (#8-32 x 7/8"), Slotted Hex Head
3	815-0147	2	Screw, Phillips Self Tapping (#6-32 x 5/8") - Valve Retainer
4	149-0096	2	*Valve and Cage
5	149-0095	2	*Gasket, Valve
6	149-0582	1	*Diaphragm Assembly
7	149-0672	1	*Spring
8	149-0539	1	Retainer, Valve Cage
9	149-0675	1	*Spring
10	516-0113	1	Pin, Rocker Arm
11		1	Body, Lower (Not Sold Separately)
12	149-0710	1	Link and Arm, Rocker (Only As a Set)
14	149-1042	1	Lever, Primer
15	509-0065	2	Seal, "O" Ring
16	149-1044	1	Spring, Primer Lever
17	149-0003	1	£ *Gasket, Pump Mounting
18	518-0129	1	Ring, Retainer - Primer Lever
19	149-0858	1	*Gasket, Diaphragm - Lower Side

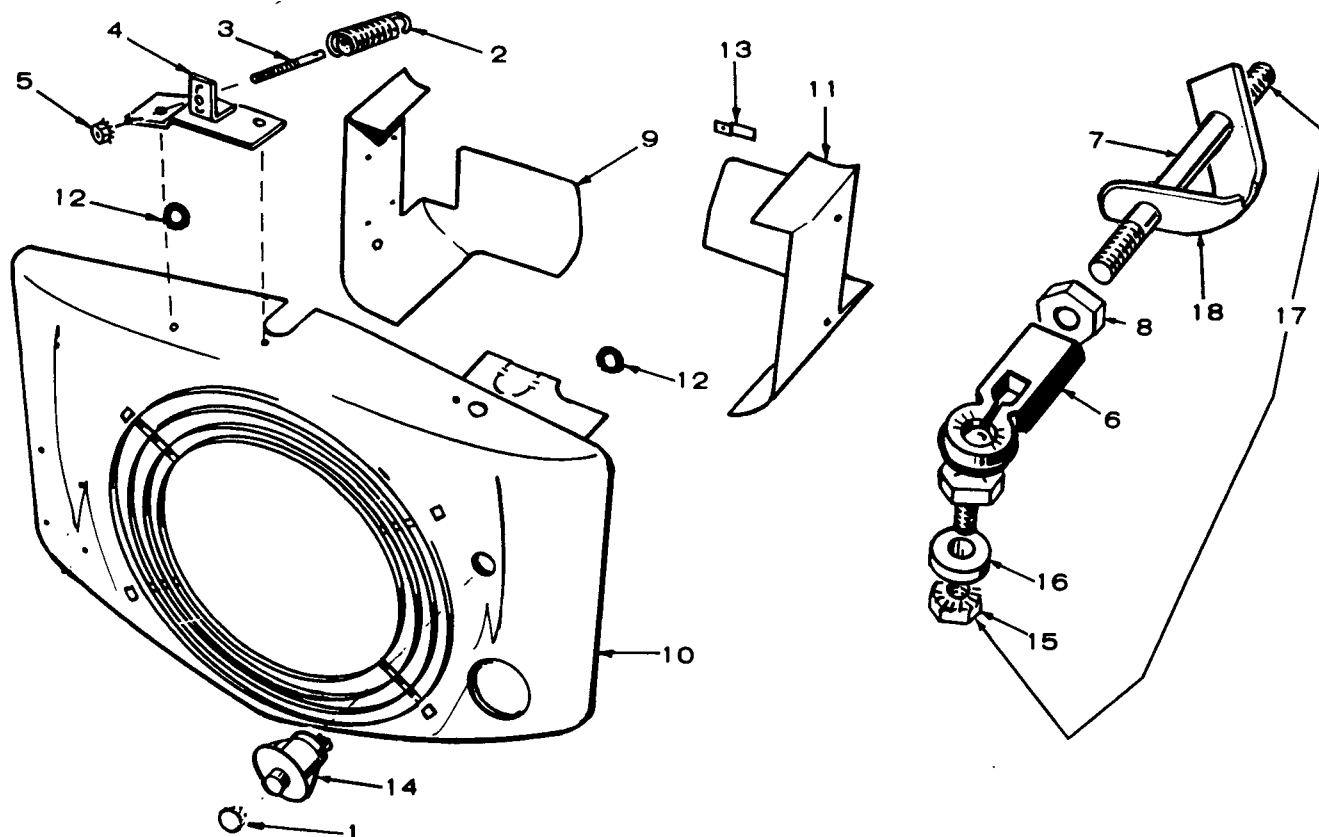
\* - Included in 149-0526 Repair Kit.

£ - Mounting Gasket supplied with new unit.





# AIR HOUSING AND GOVERNOR

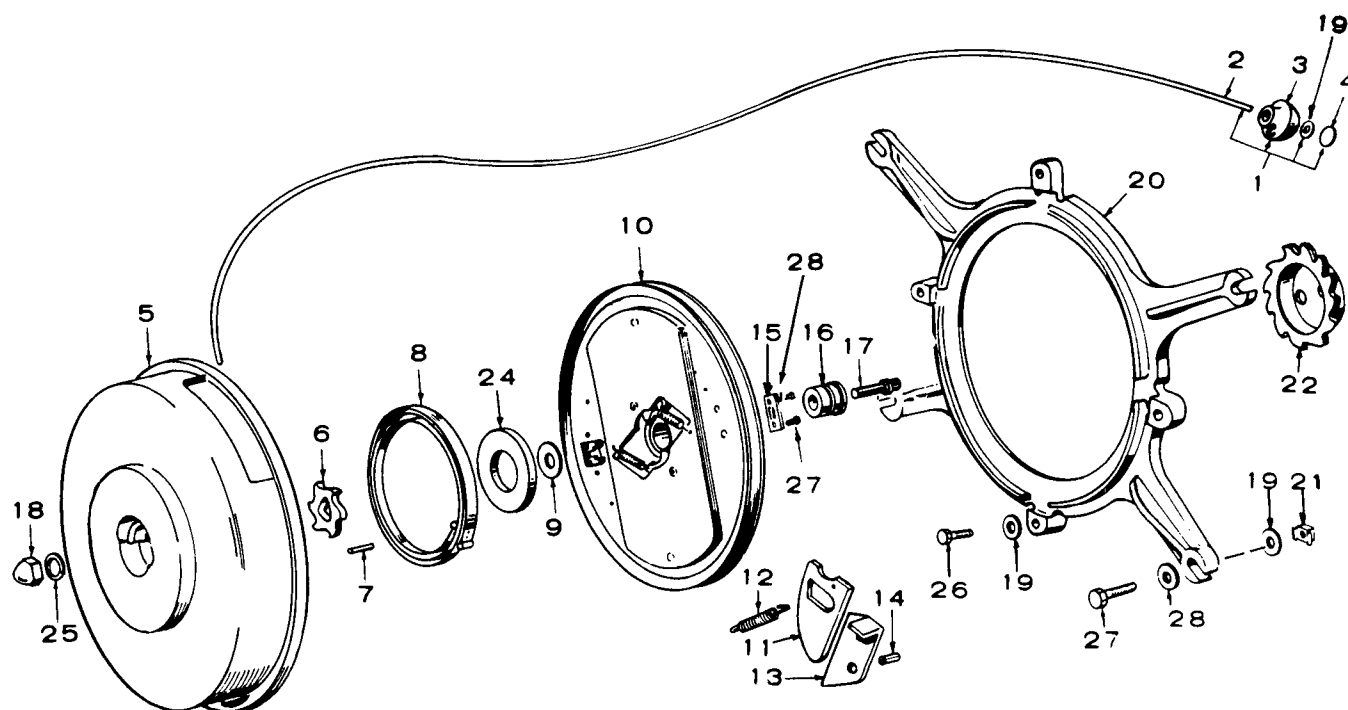


REF. NO.	PART NO.	QTY. USED	PART DESCRIPTION
1	517-0021	1	Button, Dot (For Units Without Stop Switch)
2	150-0098	1	Spring, Governor
3	150-1023	1	Stud, Governor Adjusting
4	150-1262	1	Bracket, Governor Adjusting Stud
5	870-0131	1	*Nut, Hex - Governor Adjusting WET (10-32)
6	JOINT, BALL		
	150-0974	2	Spec A Only
	150-0939	2	Begin Spec B - Plastic
	150-0639	2	*Begin Spec B - Metal
7	LINK, THROTTLE		
	520-0187	1	*Spec A Only
	520-0623	1	Begin Spec B - Used with Plastic Ball Joints Only
	520-0187	1	Begin Spec B - Used with Metal Ball Joints Only
8	870-0053	2	*Nut, Hex (10-32)

REF. NO.	PART NO.	QTY. USED	PART DESCRIPTION
9	134-0589	1	Housing, Cylinder Air - Left
10	HOUSING, BLOWER		
	134-1579	1	Key 1
	134-1721	1	Key 2
11	134-0588	1	Housing, Cylinder Air - Right
12	508-0095	2	Grommet, Blower Housing - Key 1
13	134-0599	1	Clip, Cylinder Air Housing
14	313-0018	1	Switch, Stop Button - Key 1 (For Lead Use 334-0028 Wire)
15	870-0131	2	Nut (10-32), Self Locking - Ball Joint
16	526-0196	2	*Washer, Flat - Ball Joint (7/32 ID x 7/16 OD x 1/8" Thk)
17	150-1080	1	Linkage Assembly, Governor (Includes Parts Marked *)
18	150-0430	1	*Bracket, Governor Spring

\* - Parts Included in 150-1080 Governor Linkage Assembly.

# READI-PULL STARTER - KEY 1

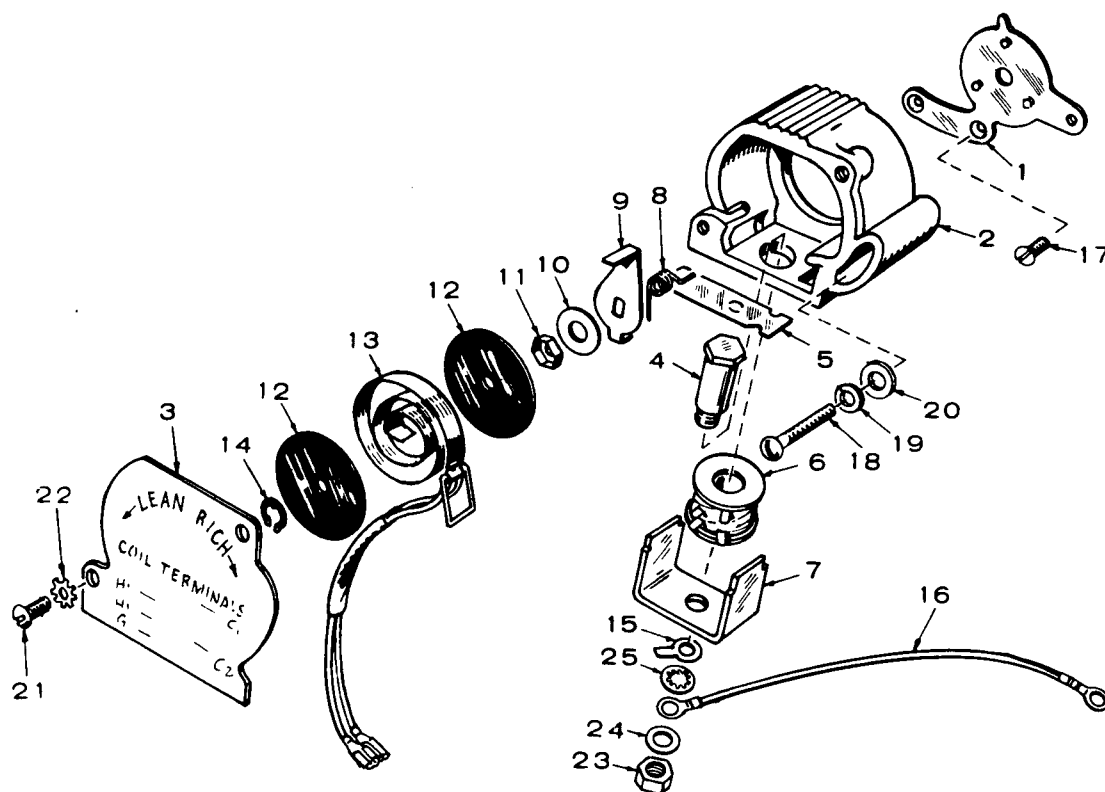


REF NO.	PART NO.	QTY USED	PART DESCRIPTION
	192-0325	1	Starter Kit - Complete (Includes Mounting Ring and Ratchet Wheel)
1	192-0045	1	Rope and Grip Assembly
2	192-0043	1	Rope, Starter (83")
3	192-0044	1	Grip, Starter Rope - Rubber
4	517-0025	1	Plug, Starter Rope Grip
5	192-0152	1	Cover, Starter
6	192-0153	1	Gear, Anti-Backlash
7	516-0138	1	Pin (3/16 x 5/8") - Recoil Spring
8	192-0039	1	Spring, Recoil
9	526-0123	1	Washer, Thrust - Sheave Bushing to Cover (25/64 ID x 1-1/4 OD x .0598 Thk)
10	192-0180	1	Sheave, Rope (Includes Parts Marked *)
11	192-0172	2	*Pawl
12	192-0165	2	*Spring, Pawl
13	192-0168	2	*Arm, Ratchet
14	516-0110	4	*Pin (5/16 x 1/2"), Roll (2) Ratchet Arm, (2) Pawl
15	192-0167	1	*Clamp, Rope
16	192-0163	1	Bearing, Sheave Hub (Bronze)
17	192-0323	1	Screw (Special)
18	862-0003	1	Nut, Hex (3/8-16)

REF NO.	PART NO.	QTY USED	PART DESCRIPTION
19			Washer, Flat
	526-0180	4	Starter to Mounting Ring
	526-0169	1	Starter Rope Grip
	526-0130	4	Starter Ring to Blower Housing (1/16" Thick)
	526-0158	4	Starter Ring to Blower Housing (1/8" Thick)
20	192-0186	1	Ring - Starter to Blower Housing
21	870-0110	4	Nut, Speed Grip - Starter Ring to Blower Housing (1/4-20)
22	192-0309	1	Wheel, Ratchet
24	526-0168	1	Washer, Flat - Recoil Spring Retainer (1-15/32 ID x 3 OD x 3/64" Thk)
25	850-0050	1	Washer, Lock - Cover Nut (3/8")
26			Screw, Cap - Hex Head
	800-0007	4	Starter Ring to Blower Housing (1/4-20 x 1")
	815-0137	4	Starter to Mounting Ring (1/4-20 x 5/8")
27	815-0137	2	*Screw, Hex Head - Rope Clamp Mounting (1/4-20 x 5/8")
28	526-0015	2	*Washer, Flat - Rope Clamp Mounting (9/32 ID x 9/16 OD x 1/16" Thk)

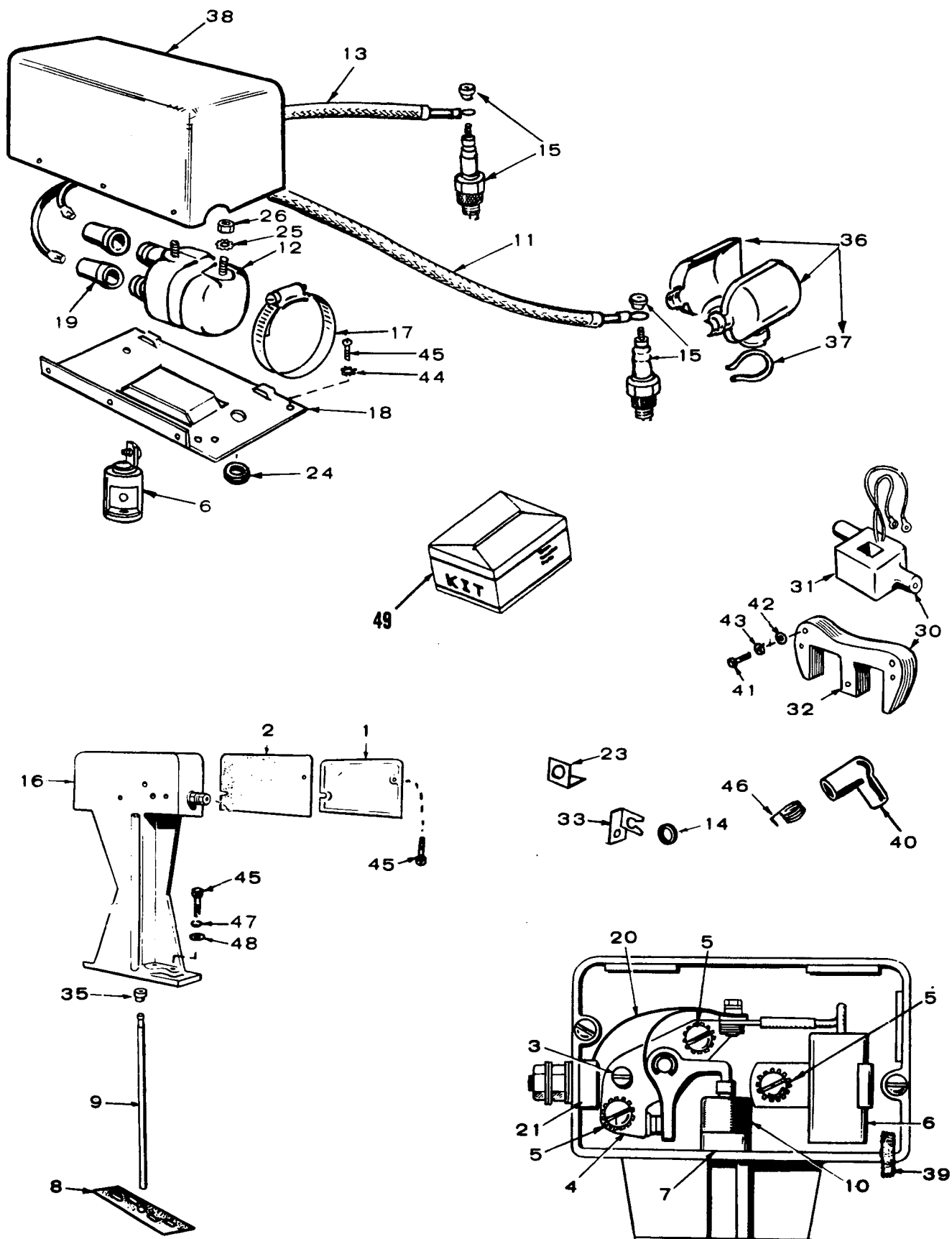
\* - Included in 192-0180 Rope Sheave Assembly.

# THERMO-MAGNETIC CHOKE



REF. NO.	PART NO.	QTY. USED	PART DESCRIPTION
	153-0429	1	Replacement Kit (Includes Complete Choke - Less Leads)
1	153-0385	1	Plate, Mounting
2	153-0386	1	Body
3	153-0389	1	Cover
4	153-0391	1	Core, Solenoid
5	153-0395	1	Armature
6	307-1203	1	Coil, Solenoid Assembly
7	153-0392	1	Frame, Solenoid
8	153-0387	1	Spring
9	153-0390	1	Lever, Thermostat
10	526-0018	1	Washer, Flat (17/64" ID x 5/8" OD x 1/16" Thk)
11	870-0134	1	Palnut (1/4-20)
12	153-0399	2	Insulator
13	153-0400	1	Heater Assembly
14	518-0129	1	Ring, Retaining
15	332-0876	1	Terminal Ground
16	LEAD, CHOKE		
	336-1550	1	Choke to Ground
	336-1549	1	Choke Solenoid Ground
17	815-0161	2	Screw, Flat Head (10-32 x 3/8") - Plate Mounting
18	813-0107	1	Screw, Round Head - Choke Adjustment (10-32 x 1-1/4")
19	850-0030	1	Washer (#10), Lock
20	526-0008	1	Washer, Flat (13/64 ID x 7/16 OD x 1/32" Thk)
21	812-0076	2	Screw, Round Head - Machine Cover Mounting (8/32 x 5/16")
22	854-0007	2	Washer, Lock-IT (#8)
23	862-0015	1	Nut, Hex - Jam - Choke Coil (5/16-18)
24	526-0022	1	Washer, Flat (21/64 ID x 9/16 OD x 1/16" Thk)
25	854-0017	1	Washer, Lock - IT (5/16")

# IGNITION SYSTEM

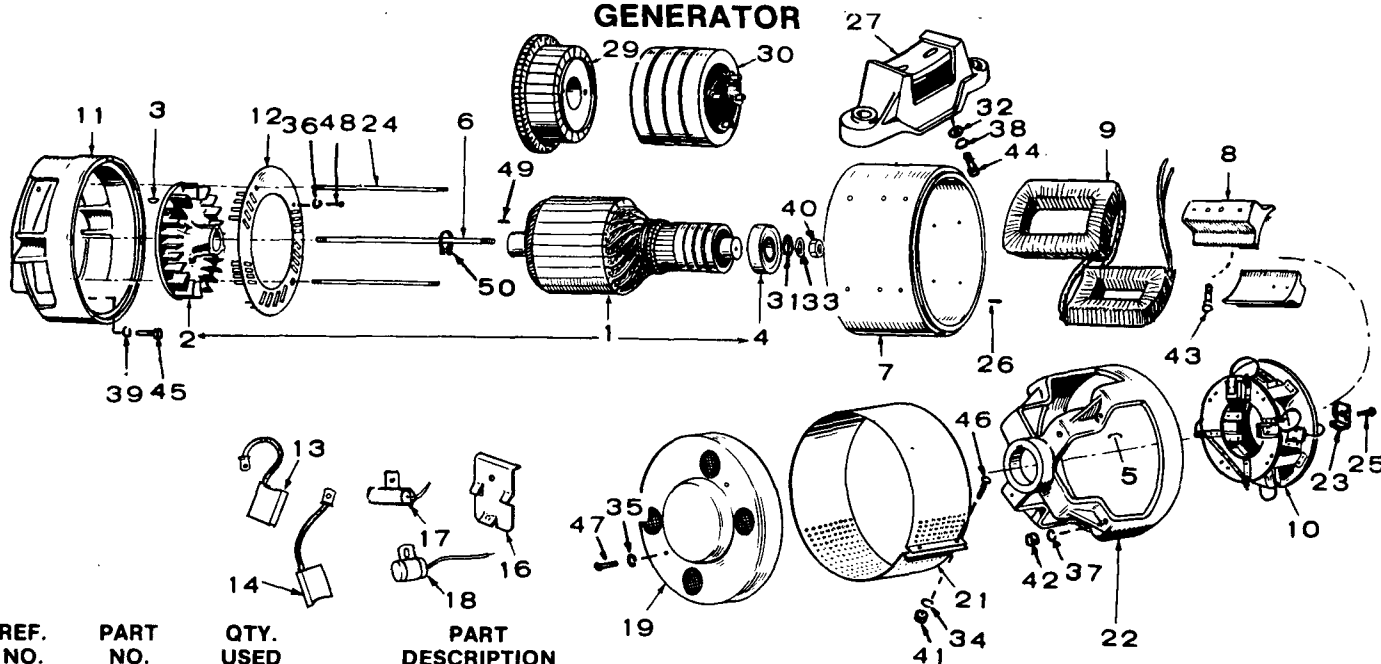


# IGNITION SYSTEM

REF NO.	PART NO.	QTY USED	PART DESCRIPTION	REF NO.	PART NO.	QTY USED	PART DESCRIPTION
1	160-0930	1	*Cover, Breaker Box	30	160-0752	1	Magneto Stator Assembly - Key 1 (Includes Parts Marked **)
2	160-0150	1	*Gasket, Breaker Box Cover	31	160-0750	1	**Coil, Magneto Stator - Key 1
3	160-0075	1	*Cam, Point Gap Adjusting	32	160-0749	1	**Pole Shoe, Magneto Stator - Key 1
4	160-0002	1	+*Point Set, Breaker	33	167-0188	4	Clip, Spark Plug Cables - Key 1
5	815-0281	3	*Screw, Round Head Drive (#4 x 1/8") Breaker Points and Condenser Mounting	35	160-0929	1	*Bushing, Breaker Box (Bottom)
6			Condenser	36	167-0067	2	Shield, Spark Plug (Includes Clamp)
	312-0069	1	+* Breaker Points	37	167-0064	2	Clamp, Spark Plug Shield
	312-0162	1	Ignition Coil - Key 2	38	166-0385	1	Cover, Ignition Coil
7	160-0931	1	*Guide, Plunger	39	160-0261	1	*Wick, Breaker Box
8	160-0043	1	Gasket, Breaker Box Mounting	40	166-0250	2	Cover, Spark Plug
9	160-0723	1	*Plunger	41	815-0259	2	Screw, Hex Head - Pole Shoe Mounting (1/4-20 x 1-1/4")
10	160-0382	1	*Diaphragm, Breaker Box	42	526-0184	2	Washer, Flat - Pole Shoe Mounting (17/64 ID x 5/8 OD x 1/8" Thk)
11			Cable, Spark Plug - Right Hand	43	850-0040	2	Washer, Lock - Pole Shoe Mounting (1/4")
	167-1467	1	Shielded	44	853-0008	2	Washer, Shakeproof - Coil Bracket Mounting - ET (#10) Screw
	167-1595	1	Unshielded	45			
12	166-0346	1	Coil, Ignition		802-0035	2	* Socket Head - Breaker Box Mounting (1/4-20 x 7/8")
13			Cable, Spark Plug - Left Hand		812-0077	2	* Round Head - Machine - Breaker Box Cover Mounting (8/32 x 3/8")
	167-1468	1	Shielded		813-0100	2	Round Head - Machine - Coil Bracket Mounting (10-32 x 1/2")
	167-1595	1	Unshielded	46	166-0253	2	Spring, Contact - Spark Plug Cover
14	508-0095	2	Grommet, Rubber - Key 1	47	850-0040	2	*Washer, Lock (1/4")
15			Plug, Spark	48	526-0214	2	*Washer, Flat (17/64 ID x 1/2 OD x 1/16" Thk)
	167-0241	2	Non-Resistor Type	49	160-0836	1	Kit, Tune Up (Includes Parts Marked +)
	167-0237	2	Resistor Type				
16	160-1135	1	Box, Breaker (Includes Parts Marked *)				
17	503-0514	1	Clamp, Coil - Key 2				
18	166-0464	1	Bracket, Coil Mounting - Key 2				
19	160-0558	2	Nipple, Rubber - Coil				
20	160-0428	1	*Strap, Point Set to Terminal Block				
21	160-0349	1	*Terminal Assembly, Breaker Box				
23	332-0273	1	Clip, Magneto Lead - Key 1				
24			Grommet				
	508-0002	1	Magneto Lead Clip - Key 1				
	508-0114	1	Ignition Coil Lead - Key 2				
25	854-0010	2	Washer, Lock - IT (#10)				
26	870-0053	2	Nut, Hex - Coil Leads (10-32)				

- \* - Parts Included in 160-1135 Breaker Box Assembly.
- \*\* - Parts Included in 160-0752 Magneto Stator Assembly.
- + - Parts Included in 160-0836 Tune Up Kit.

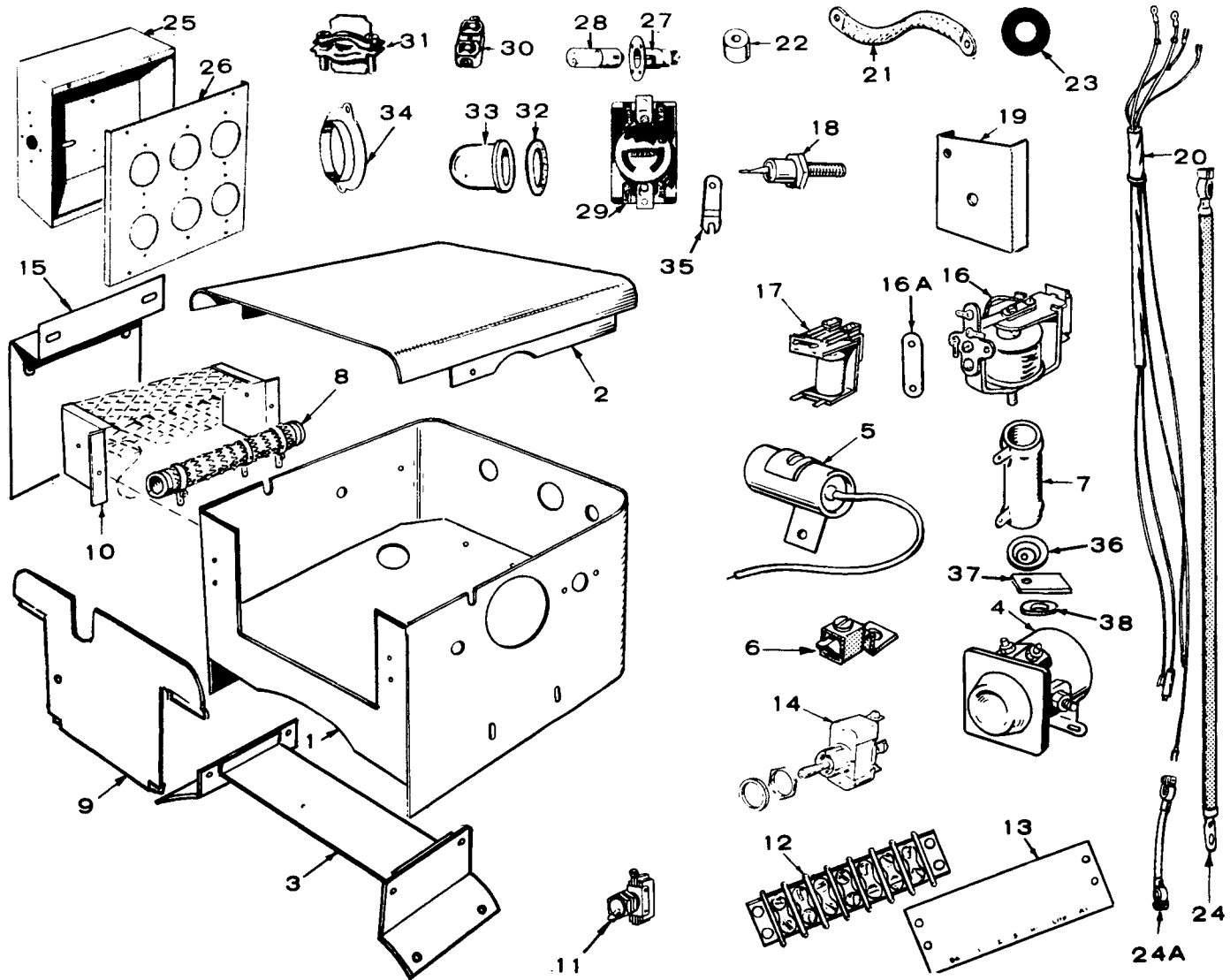
# GENERATOR



REF. NO.	PART NO.	QTY. USED	PART DESCRIPTION
1	ARMATURE ASSEMBLY (Includes Bearing and Blower)		
	201-1427	1	50 Hertz (120/240 Volts)
	201-1335	1	60 Hertz (120/240 Volts)
	201-1336	1	60 Hertz (120/208 Volts)
2	205-0053	1	Blower, Generator
3	515-0006	1	Key - Blower to Crankshaft
4	510-0047	1	Bearing, Armature
5	232-0596	1	Clip, Bearing Stop
6	520-0595	1	Stud, Armature Through
7	210-0385	1	Frame Only, Generator (Machined and Drilled, Less Coils and Pole Shoe)
8	221-0143	2	Shoe, Field Pole
9	COIL ASSEMBLY, FIELD (Set of 2 Coils)		
	222-1645	1	Key 1 (60 Hertz)
	222-1646	1	Key 1 (50 Hertz)
	222-1641	1	Key 2 (120/208)
	222-1646	1	Key 2 (50 Hertz)
	222-1641	1	Key 2 (60 Hertz)
10	RIG ASSEMBLY, BRUSH		
	212-0307	1	120/240 Volt, 1 Phase, 120 Volt, 1 Phase and 120/208 Volt, 3 Phase
	212-0332	1	240 Volt, 3 Phase
11	231-0124	1	Adapter, Generator to Engine
12	232-1256	1	Scroll, Air Baffle
13	214-0061	4	Brush, Commutator
14	BRUSH, COLLECTOR RING		
	214-0086	6	120/240 Volt, 1 Phase, 120 Volt, 1 Phase and 120/208 Volt, 3 Phase (All except inside of smaller ring)
	214-0086	4	240 Volt, 3 Phase (All except inside of smaller ring)
	214-0087	2	Inside Smaller Ring
16	SPRING, BRUSH		
	212-1105	12	120/240 Volt, 1 Phase, 120 Volt, 1 Phase and 120/208 Volt, 3 Phase
	212-1105	10	240 Volt, 3 Phase
17	312-0027	1	Condenser (.5 Mfd), DC
18	312-0058	3	Condenser (.1 Mfd), AC
19	211-0114	1	Cover, End Bell
21	234-0005	1	Band, End Bell
22	211-0098	1	Bell, End
23	212-1214	4	Clamp, Brush Rig
24	520-0498	2	Stud, Generator Through (5/16 x 15 11/16" Lg)

REF. NO.	PART NO.	QTY. USED	PART DESCRIPTION
25	800-0003	4	Screw, Cap - Hex Head - Brush Rig Clamp - (1/4-20 x 1/2")
26	516-0103	2	Pin (1/8 x 1/2"), Roll
27	232-1798	1	Support, Generator
29	203-0146	1	Commutator
30	COLLECTOR RING		
	204-0092	1	120/240 Volt, 1 Phase, 120 Volt, 1 Phase and 120/208 Volt, 3 Phase
	204-0010	1	240 Volt, 3 Phase
31	526-0032	1	Armature through Stud (24/64 ID x 7/8 OD x 1/16" Thk)
32	526-0030	2	Mounting Support to Generator (13/32 ID x 7/8 OD x 1/8" Thk)
	WASHER, LOCK-SPRING		
33	850-0055	1	Armature through Stud (7/16")
34	850-0030	2	Generator Band Mounting (#10)
35	850-0030	2	End Bell Cover Mounting (#10)
36	850-0030	4	Baffle Plate Mounting (#10)
37	850-0045	2	Generator through Stud (5/16")
38	850-0050	2	Mounting Support to Generator (3/8")
39	850-0050	4	Adapter Mounting (3/8")
	NUT, HEX		
40	862-0004	1	Armature through Stud (7/16-14)
41	870-0053	2	Generator Band Mounting (10-32)
42	862-0015	2	Generator through Stud (5/16-18)
	SCREW, CAP-HEX HEAD		
43	800-0032	12	Pole Shoe Mounting (5/16-18 x 1-3/4")
44	800-0050	2	Mounting Support to Generator (3/8-16 x 1")
45	800-0050	4	Adapter Mounting (3/8-16 x 1")
	SCREW, ROUND HEAD		
46	813-0104	2	Generator Band Mounting (10-32 x 7/8")
47	813-0098	2	End Bell Cover Mounting (10-32 x 3/8")
48	813-0098	4	Baffle Plate Mounting (10-32 x 3/8")
49	515-0122	1	Key, Blower Wheel to Armature Shaft
50	518-0014	2	Ring, Retaining - Blower Wheel

# CONTROL



# CONTROL

REF. NO.	PART NO.	QTY. USED	PART DESCRIPTION
1	301-2705	1	Box, Control - Key 2
2	301-1244	1	Cover, Control Box - Key 2
3	301-2593	1	Bracket, Control Box Mounting - Key 2
4	307-0845	1	Solenoid, Start - Key 2
5	312-0057	1	Condenser (1 Mfd.), Start Solenoid - Key 2
6	332-0142	1	Terminal, Ground (17/64" Stud Hole)
6A	332-0952	1	Terminal, Ground (21/64" Stud Hole)
6B	332-0517	1	Terminal, Ground (13/64" Stud Hole)
7	RESISTOR, FIXED - KEY 2		
	304-0060	1	1.72-Ohm, 25 Watt
	304-0251	1	30-Ohm, 5 Watt
8	304-0635	1	Resistor (Mounts Outside Control Box) - Key 2
9	301-2597	1	Plate, Control Box End - Key 2
10	301-2528	1	Box, Resistor Mounting - Key 2
11	308-0002	1	Switch (For Hand Cranking Only)
12	BLOCK, TERMINAL-KEY 2		
	332-0706	1	Remote Control - 8 Place
	332-0609	1	Optional - 2 Place
	332-0611	1	Optional - 3 Place
13	STRIP, MARKER - KEY 2		
	332-1126	1	Remote Control - 8 Place
	332-0610	1	Optional - 2 Place
	332-0612	1	Optional - 3 Place
14	308-0154	1	Switch, Start-Stop - Key 2
15	301-2683	1	Bracket, Control Box Mounting - Key 1
16	307-0253	1	Relay, Stop - Key 2
16A	332-0592	1	Jumper, Stop Relay

REF. NO.	PART NO.	QTY. USED	PART DESCRIPTION
17	307-1978	2	Relay, Start-Disconnect - Key 2
18	305-0673	1	Rectifier - Key 2
19	305-0254	1	Bracket, Rectifier Heat Sink - Key 2
20	338-0370	1	Harness, Wiring - Key 2
21	STRAP, GROUND - KEY 2		
	337-0036	1	4-15/16" Lg.
	337-0052	1	5-7/16" Lg.
22	402-0078	4	Cushion, Mounting - Key 2
23	GROMMET - KEY 2		
	508-0001	2	For 1-1/16" Hole
	508-0002	3	For 1/2" Hole
	508-0004	1	For 1-3/8" Hole (1-3/4" OD)
	508-0009	1	For 1-3/8" Hole (1-9/16" OD)
24	416-0077	2	Cable (28"), Battery - Key 2
24A	416-0004	1	Cable (6-3/4"), Battery Jumper - Key 2
25	301-2112	1	Box, Receptacle - Key 1
26	301-3659	1	Panel, Box - Key 1
27	322-0021	1	Receptacle, Light - Key 1
28	322-0011	1	Lamp - Key 1
29	RECEPTACLE, TWISTLOCK-KEY 1		
	323-0855	2	20 Amp., 250 Volt
	323-0860	2	20 Amp., 120/208 Volt
	323-0866	2	20 Amp., 125 Volt
30	323-0383	2	Receptacle, Duplex - Key 1
31	331-0027	1	Connector - Key 1
32	149-0234	1	Guard - Key 1
33	149-0156	1	Gasket - Key 1
34	301-1902	1	Clamp - Key 1
35	332-1695	2	Tab, Terminal Connector
36	304-0014	2	Washer, Centering - Resistor - Key 2
37	304-0292	1	Insulator, Resistor - Key 2
38	508-0015	2	Washer, Fiber - Insulator - Key 2



## SERVICE KIT AND MISCELLANEOUS

REF NO.	PART NO.	QTY USED	PART DESCRIPTION	REF NO.	PART NO.	QTY USED	PART DESCRIPTION
	98-1100	1	Decal Kit		509-0041	1	*Seal, Bearing
	168-0103	1	Kit, Gasket - Engine Complete (Includes Parts Marked *)		509-0008	1	*Seal, Oil
	101-0040	1	*Gasket, Rear Bearing Plate		509-0040	1	*Seal, Oil
	101-0041	1	*Gasket, Rear Bearing Plate		509-0030	2	*Seal, O-Ring
	102-0158	1	*Gasket, Oil Base		110-3136	2	*Gasket, Valve Guide
	103-0011	1	*Gasket, Gearcase		168-0095	1	Kit, Gasket - Carbon Removal (Includes Parts Marked +)
	110-0667	2	*Gasket, Valve Box		110-0667	2	+Gasket, Oil Fill Tube
	110-0892	2	*Gasket, Cylinder Head		110-0892	2	+Gasket, Cylinder Head
	120-0161	1	*Gasket Kit		154-0013	2	+Gasket, Intake and Exhaust Manifold
	123-0191	1	*Gasket, Oil Fill Cap		154-0360	2	+Gasket, Exhaust
	140-0584	1	*Gasket, Air Cleaner		154-0973	2	+Gasket, Exhaust Manifold
	140-0585	1	*Gasket, Air Horn		522-0225	1	Engine Overhaul Kit Spec A Only
	140-0921	1	*Gasket, Air Horn		522-0239	1	Begin Spec B
	141-0078	2	*Gasket, Carburetor Flange				Touch-Up Paint (Pressurized Can)
	141-0281	1	*Gasket, Carburetor Flange		525-0137	1	Metallic Green (13 oz.)
	149-0003	2	*Gasket, Fuel Pump		525-0305	1	Non-Metallic Green (13 oz.)
	122-0375	1	*Gasket, Oil Filter Adapter				
	149-0149	1	*Gasket, Filter Bowl				
	150-0425	1	*Gasket, Vacuum Booster				
	154-0013	2	*Gasket, Intake and Exhaust Manifold				
	160-1040	1	*Gasket, Breaker Box				
	154-0360	2	*Gasket, Exhaust				
	154-0973	2	*Gasket, Exhaust Manifold				
	160-0043	2	*Gasket, Breaker Box				
	509-0117	1	*Seal, O-Ring				
	160-0150	1	*Gasket, Breaker Box Cover				

+ - Parts Included in 168-0095 Gasket Kit.

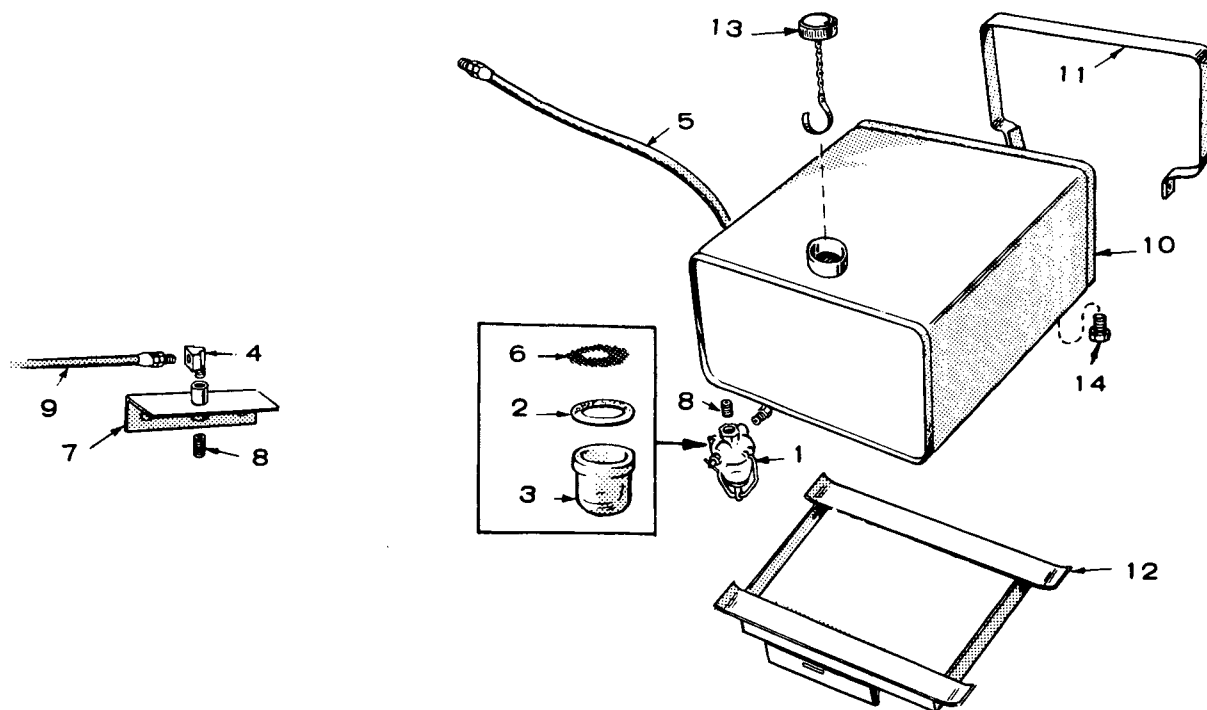
\* - Parts Included in 168-0103 Gasket Kit.

**NOTE:** For other kits, refer to the group for the part in question.

## **OPTIONAL EQUIPMENT PARTS SECTION**

**This section contains illustrated parts listing of factory installed options for the generator sets. Options may not be applicable to all models; for field conversions additional parts are usually required. Some parts listed in the standard parts section beginning Spec B are also applicable as optional parts for Spec A. Optional parts listed in this section are in addition or in place of those shown in the standard parts section.**

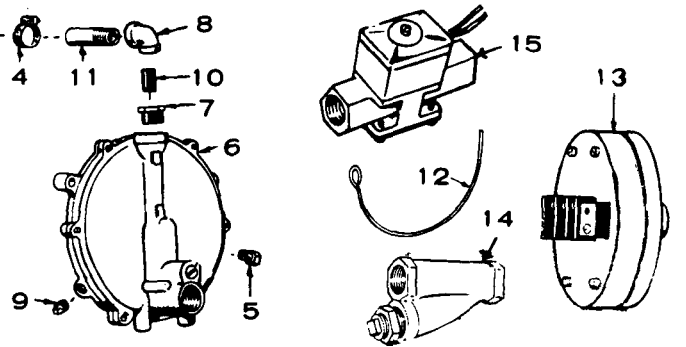
## FUEL TANK AND FILTER OPTIONAL



REF. NO.	PART NO.	QTY. USED	PART DESCRIPTION
1	149-0079	1	Filter, Fuel - Gasoline Sets
2	149-0149	1	Gasket, Filter Bowl
3	149-0150	1	Bowl, Fuel Filter
4	502-0020	1	Elbow, Fuel Filter
5	501-0015	1	Line, Fuel (16" long)
6	149-0202	1	Screen, Fuel Filter
7	149-0616	1	Bracket, Fuel Filter
8	502-0046	1	Nipple, Fuel Filter
9	501-0005	1	Line, Flexible - Filter to Pump
10	159-0546	1	Tank, Mounted Fuel
11	159-0537	2	Strap, Mounted Fuel Tank
12	159-0882	1	Bracket, Mounted Fuel Tank
13	159-0020	1	Cap, Mounted Fuel Tank
14	505-0274	2	Plug, Tank Drain

## FUEL SYSTEM (Gaseous Fuels) OPTIONAL

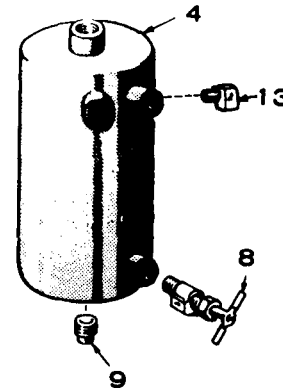
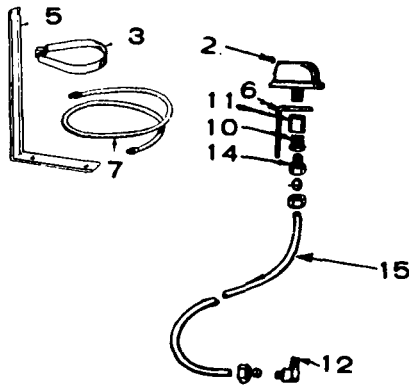
REF. NO.	PART NO.	QTY. USED	PART DESCRIPTION
1	149-0136	1	Plate, Cover - Fuel Pump Hole (Used with Gas only Fuel system)
2	*CARBURETOR-GAS ONLY (See Separate Group for Components)		
	143-0340	1	£Spec A Only
	141-0839	1	Spec A Replacement Kit (Includes a 141-0726 Carburetor)
	141-0726	1	Begin Spec B
	*CARBURETOR-GAS-GASOLINE (See Separate Group for Components)		
	143-0338	1	£Manual Choke - Spec A Only
	141-0856	1	£Manual Choke - Spec A Replacement Kit (Includes a 141-0721 Carburetor)
	141-0721	1	Manual Choke - Begin Spec B
	143-0339	1	£Electric Choke - Spec A Only
	141-0857	1	Electric Choke - Spec A Replacement Kit (Includes a 141-0722 Carburetor)
	141-0722	1	Electric Choke - Begin Spec B
3	503-0315	1	Hose, Regulator to Carburetor (1/2" ID x 2 Ft. Long)
4	503-0032	2	Clamp, Hose
5	148-0107	1	Vent



REF. NO.	PART NO.	QTY. USED	PART DESCRIPTION
6	148-0311	1	Regulator, Garretson
7	505-0017	1	Bushing, Reducer (3/8" NPT to 1/4" NPT)
8	505-0038	1	Elbow, Pipe (1/4" NPT)
9	505-0057	1	Plug, Pipe (1/8" NPT)
10	505-0099	1	Nipple, Pipe (1/4" NPT x 7/8")
11	505-0302	1	Nipple, Half, Pipe (1/4" NPT x 1-1/2")
12	143-0231	1	Wire, Choke Lock (Used on Gas-Gasoline Fuel Systems)
13	148-0367	1	Switch, Vacuum Regulator
14	149-0558	1	Strainer, Gaseous Fuel
15	307-0312	1	Valve, Solenoid-Gaseous Fuel

£ - The 143-0340 Carburetor no longer available.  
For Complete Replacement order the applicable kit.  
\* - Mounting Gasket Supplied with Carburetor.

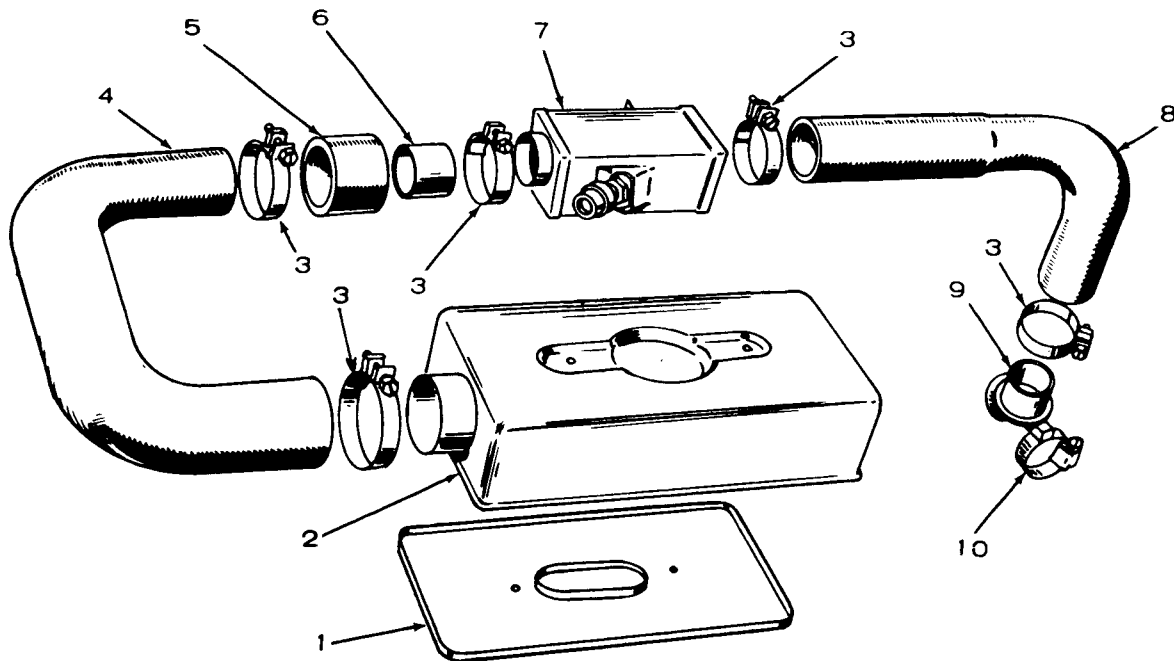
## RESERVOIR (DAY) TANK OPTIONAL



REF. NO.	PART NO.	QTY. USED	PART DESCRIPTION
	TANK KIT, RESERVOIR (DAY)		
	159-0591	1	1 Quart
	159-0942	1	2 Quart
2	159-0041	1	Cap, Vent
3	BAND, TANK MOUNTING		
	159-0556	1	1 Quart
	159-0936	1	2 Quart
4	TANK, RESERVOIR		
	159-0294	1	1 Quart
	159-0746	1	2 Quart
5	159-0612	1	Bracket, Reservoir Tank Mounting
6	415-0055	1	Bracket, Vent Cap

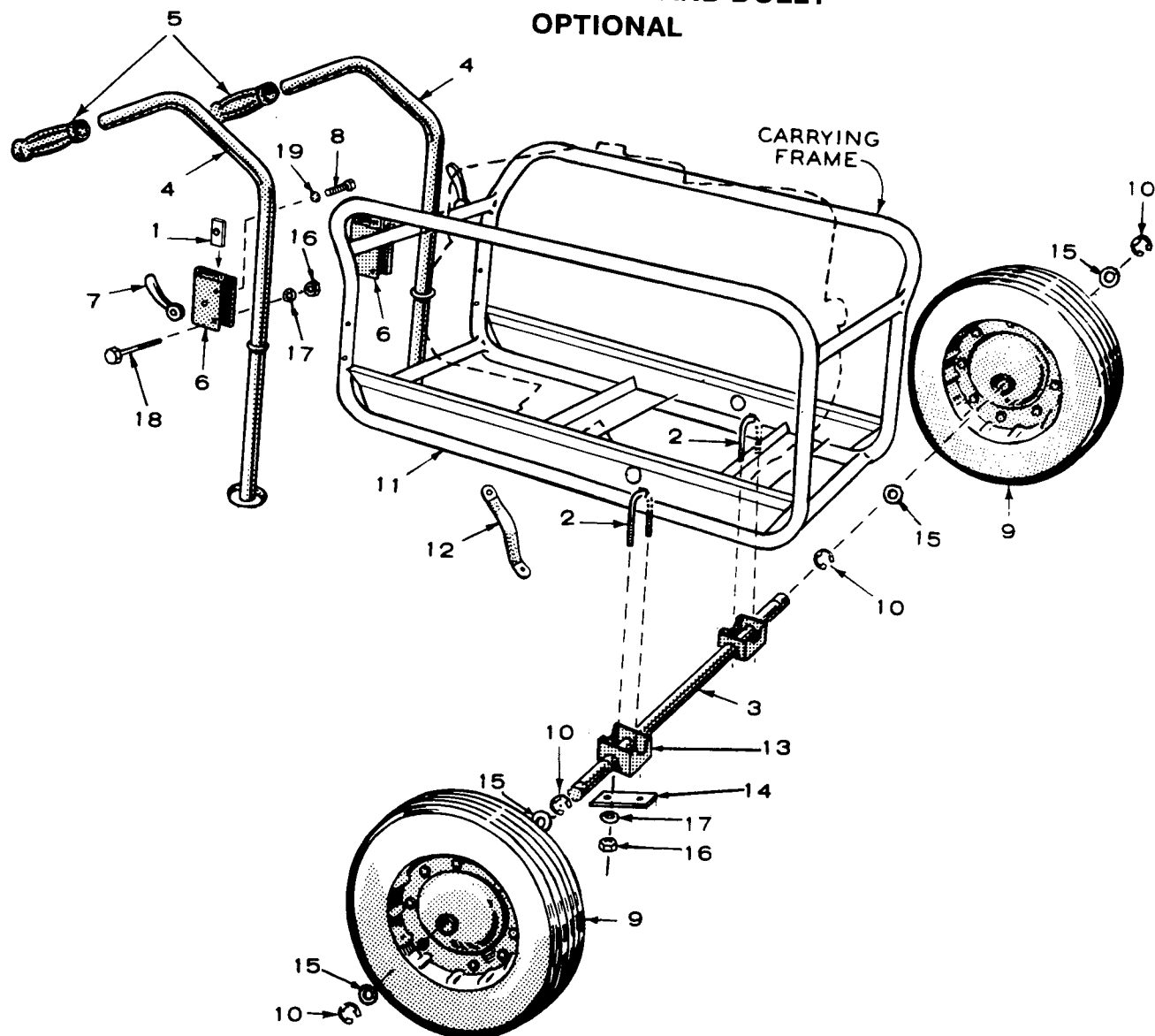
REF. NO.	PART NO.	QTY. USED	PART DESCRIPTION
7	LINE, FUEL, FLEXIBLE		
	501-0005	1	18" Long
	501-0007	1	24" Long
8	504-0086	1	Valve, Shut-Off
9	505-0057	1	Plug, Tank Drain
10	505-0016	1	Bushing (3/8 x 1/8"), Reducer
11	505-0028	1	Coupling
12	502-0020	1	Elbow (90°), Street
13	502-0024	1	Elbow (90°)
14	502-0116	1	Connector
15	159-0345	1	Tubing (5/16" x 12'), Copper

# AIR CLEANER OPTIONAL



REF. NO.	PART NO.	QTY. USED	PART DESCRIPTION
1	140-0791	1	Pan, Air Cleaner
2	140-0790	1	Cover, Air Cleaner
3	503-0004	5	Clamp, Hose
4	503-0657	1	Hose, Air Shutter to Air Cleaner
5	145-0448	1	Tube, Hose Reinforcement
6	503-0330	1	Hose, Air Shutter Adapter (2" ID x 2" Lg.)
7	140-0788	1	Shutter Assembly, Air
8	503-0689	1	Hose, Air Intake to Shutter Assembly
9	145-0449	1	Intake, Air
10	503-0189	1	Clamp, Air Intake Mounting

# CARRYING FRAME AND DOLLY OPTIONAL

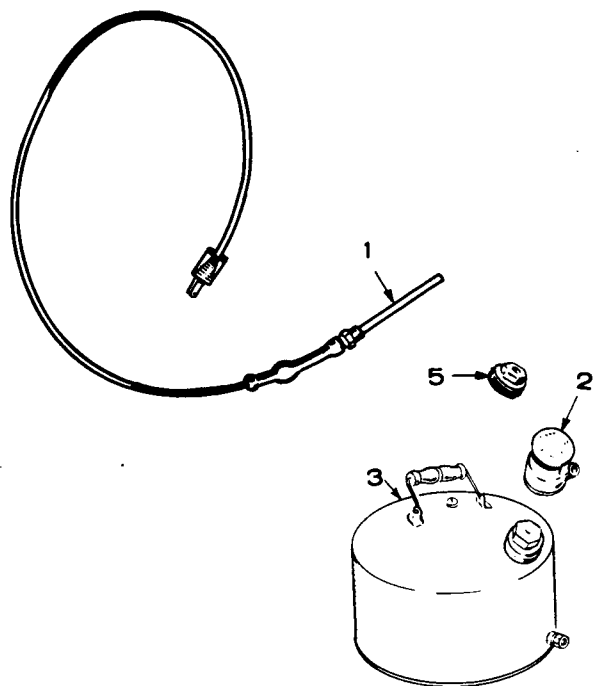


REF. NO.	PART NO.	QTY. USED	PART DESCRIPTION
	410-0235	1	Dolly Assembly (Includes Parts Marked *)
1	410-0238	2	*Lock, Handle
2	410-0148	2	*Bolt, "U"
3	410-0233	1	*Axle, Dolly
4	410-0147	2	*Handle, Dolly
5	403-0205	2	*Grip, Handle
6	410-0179	2	*Channels, "U"
7	406-0062	2	*Nut, Handle
8	800-0052	2	*Screw, Cap - Hex Head (3/8-16 x 1-1/2")
9	410-0236	2	*Wheel and Tire Assembly (16 x 4.00)
10	518-0130	4	*Ring, "E" Retaining - Wheel to Axle
11	403-0406	1	Frame, Carrying
12	337-0056	1	Strap, Ground
13	410-0283	2	*Support, Dolly Axle

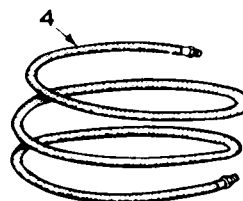
REF. NO.	PART NO.	QTY. USED	PART DESCRIPTION
14	410-0284	2	*Plate, Dolly Support
15	526-0081	4	*Washer, Flat - Wheel Mtg. (1-1/64 ID x 1-5/8 OD x 1/8" Thk)
16	NUT, HEX 860-0017	4	*Axle Mounting (3/8-16)
	862-0015	4	*Channel Mounting (5/16-18)
17	WASHER, LOCK 850-0050	4	*Axle Mounting (3/8)
	850-0045	4	*Channel Mounting (5/16)
18	800-0032	4	*Screw, Cap - Hex Head - Channel Mounting (5/16-18 x 1-3/4")
19	854-0020	2	*Washer, Shakeproof - Channel Tension Nut - IT (3/8")

\* - Parts included in 410-0235 Dolly Assembly.

## MISCELLANEOUS OPTIONAL PARTS



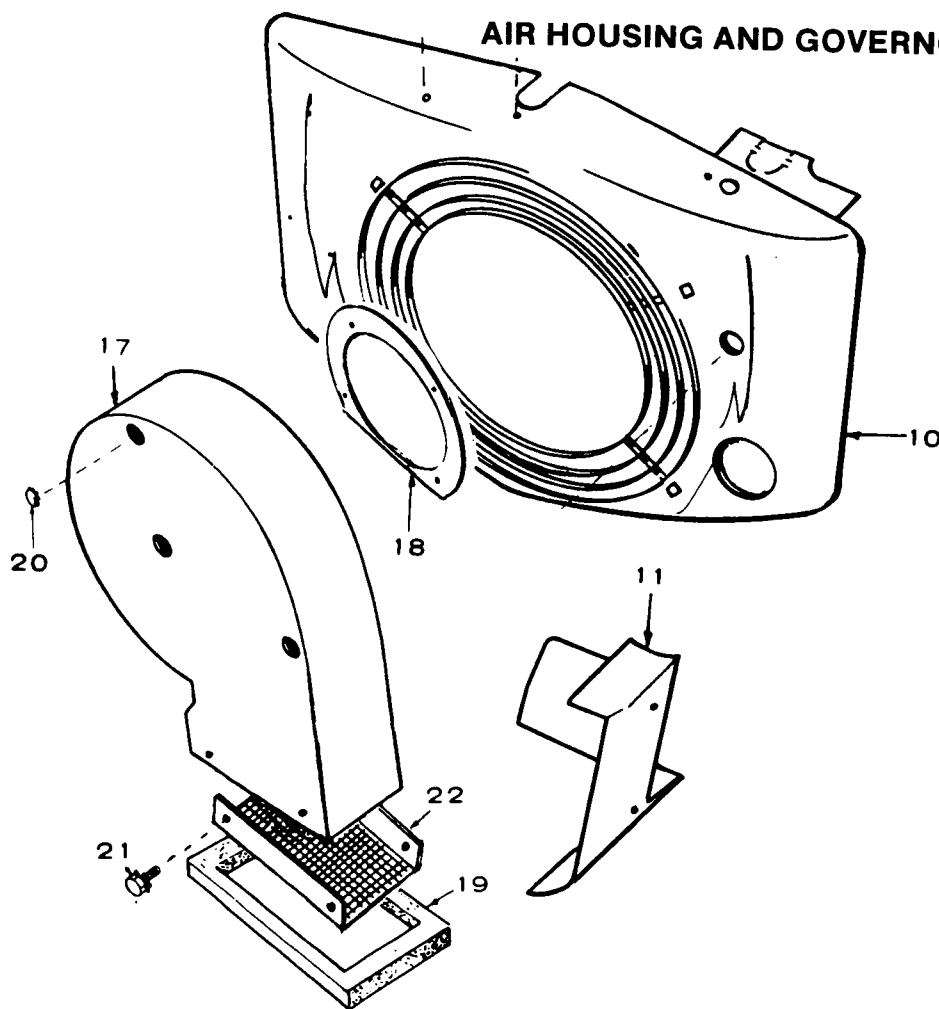
REF. NO.	PART NO.	QTY. USED	PART DESCRIPTION
1	102-0558	1	Heater, Oil Base
2	415-0124	1	Cap, Fuel Tank Rain
3	415-0126	1	Tank, Fuel (5 gal.)
4	LINE, FUEL - FLEXIBLE		
	501-0027	1	48" long
	501-0007	1	24" long
5	415-0313	1	Cap, Fuel Tank



# SPECIAL PARTS SECTION FOR MOBILE HOME GENERATING SETS

This section contains illustrated parts listing of factory installed equipment used on Mobile Home generating sets. The parts listed in this section are in addition or in place of those shown in the standard parts section. Use Key 2 when referring to the standard parts section.

## AIR HOUSING AND GOVERNOR

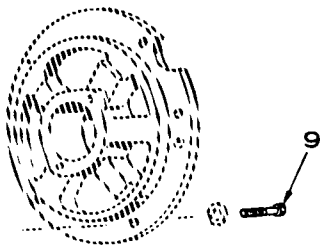


REF NO.	PART NO.	QTY USED	PART DESCRIPTION
10	134-1572	1	Housing, Blower (Must plug unused holes)
11	134-1591	1	Housing, Cylinder Air - Right
17	134-2115	1	Spec A through C
	134-3033	1	Begin Spec D (Includes Guard)
18	134-0761	1	Spacer, Scroll Mounting

REF NO.	PART NO.	QTY USED	PART DESCRIPTION
19	134-2112	1	Seal, Blower Scroll
20	517-0021	2	Button, Dot
	517-0035	1	For 7/8" Hole
21	815-0421	4	For 1-1/16" Hole
			Screw, Tapping - Hex Head with External Tooth Lock-washer (10-16 x 1/2")
22	134-2956	1	Guard, Scroll Outlet



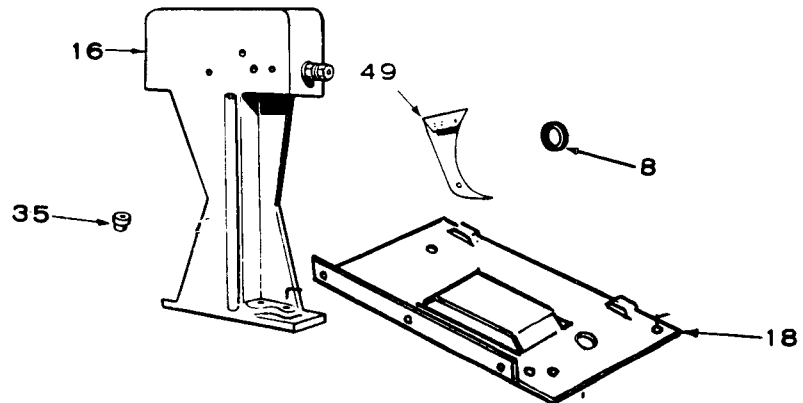
## CYLINDER BLOCK



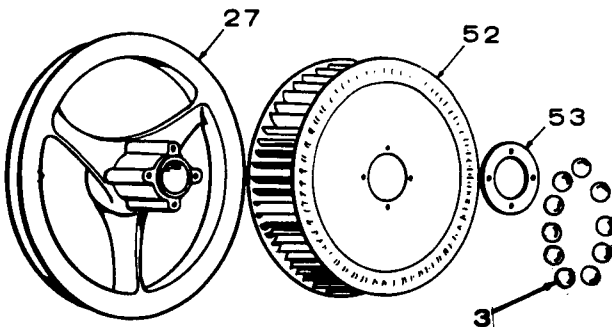
REF. NO.	PART NO.	QTY. USED	PART DESCRIPTION
9	800-0512	5	Screw, Cap - Hex Head - Rear Bearing Plate Mounting (Special)

## IGNITION SYSTEM

REF. NO.	PART NO.	QTY. USED	PART DESCRIPTION
8	160-1040	1	Gasket, Breaker Box
16	160-1135	1	Box Assembly, Breaker
18	166-0383	1	Bracket, Coil Mounting
35	160-1041	1	Bushing, Breaker Box
49	166-0519	1	Bracket, Timing



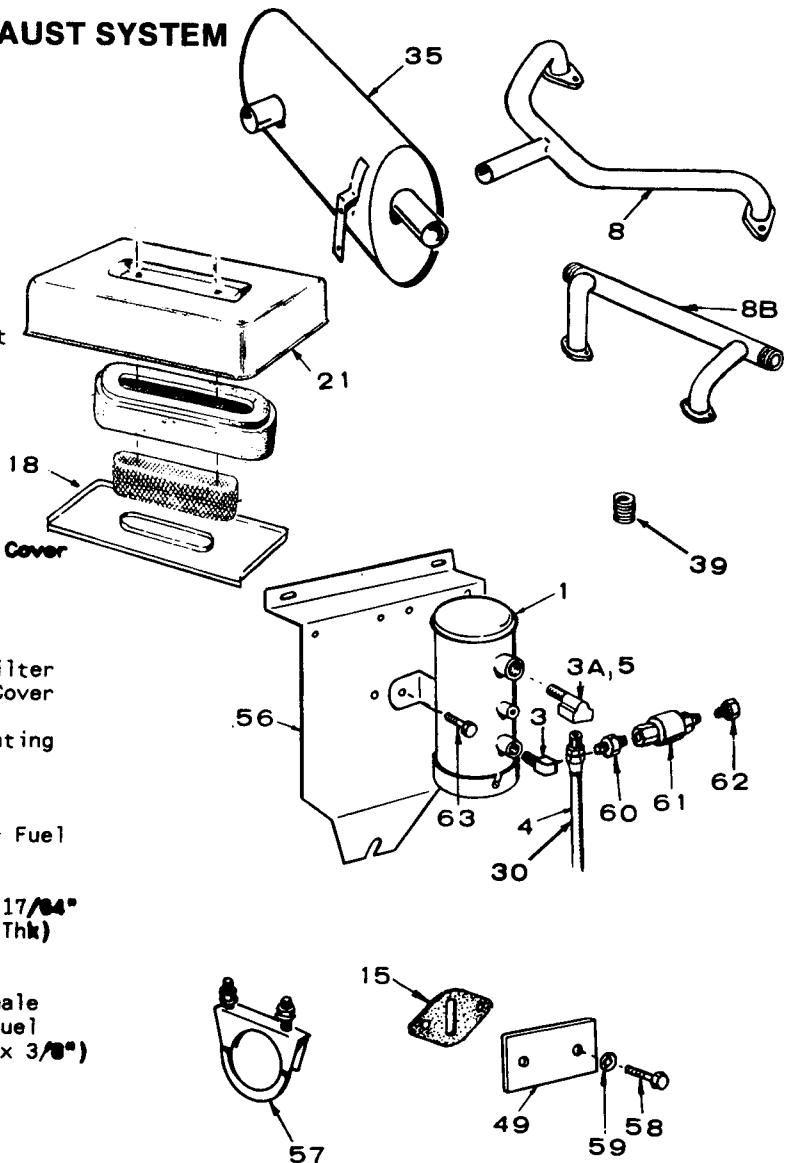
## CRANKSHAFT AND FLYWHEEL



REF. NO.	PART NO.	QTY. USED	PART DESCRIPTION
3	510-0015	10	Ball, Fly - Governor
27	104-0499	1	Flywheel
52	134-0565	1	Wheel, Blower
53	134-0911	1	Plate, Blower Wheel

# FUEL SYSTEM, EXHAUST SYSTEM

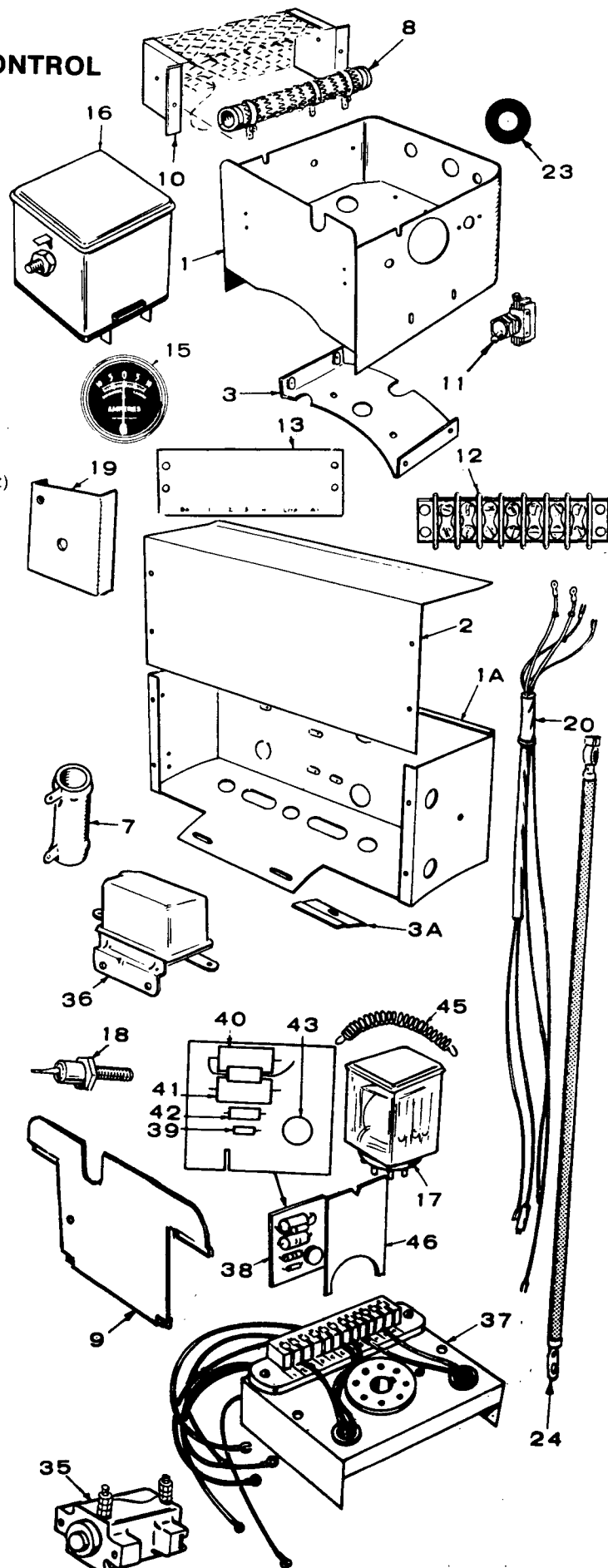
REF NO.	PART NO.	QTY USED	PART DESCRIPTION
1	149-1828	1	Pump, Fuel (Electric)
3	502-0020	1	Elbow, Fuel Pump Inlet
3A	502-0020	1	Elbow, Fuel Pump Outlet
	502-0020	1	Spec A and B
	502-0002	1	Begin Spec C
4	501-0007	1	Line, Fuel - Flexible
	501-0131	1	Spec A and B
	501-0131	1	Begin Spec C
5	502-0002	1	Elbow, Filter Inlet
8	154-1212	1	Manifold, Exhaust
8B	154-0998	1	Manifold, Exhaust
15	149-0003	1	Gasket, Fuel Pump Hole Cover
18	140-0791	1	Pan, Air Cleaner
21	140-0790	1	Cover, Air Cleaner
30	501-0005	1	Line, Fuel - Flexible
35	155-1016	1	Muffler, Exhaust
39	505-0098	1	Nipple, Fuel Pump to Filter
49	149-0136	1	Plate, Fuel Pump Hole Cover (Cylinder Block)
56	160-1089	1	Bracket, Fuel Pump Mounting
	160-1109	1	Spec A and B
	160-1109	1	Begin Spec C
57	155-1015	1	Clamp, Muffler
58	800-0004	2	Screw, Cap - Hex Head - Fuel Pump Hole Cover Plate (1/4-20 x 5/8")
59	526-0063	2	Washer, Flat - Copper (17/64" ID x 7/16" OD x 1/32" Thk)
60	502-0082	1	Nipple, Hex
61	307-1279	1	Valve, Fuel Solenoid
62	502-0003	1	Connector, Inverted Female
63	821-0009	2	Screw, Self Locking - Fuel Pump Mounting (1/4-20 x 3/8")



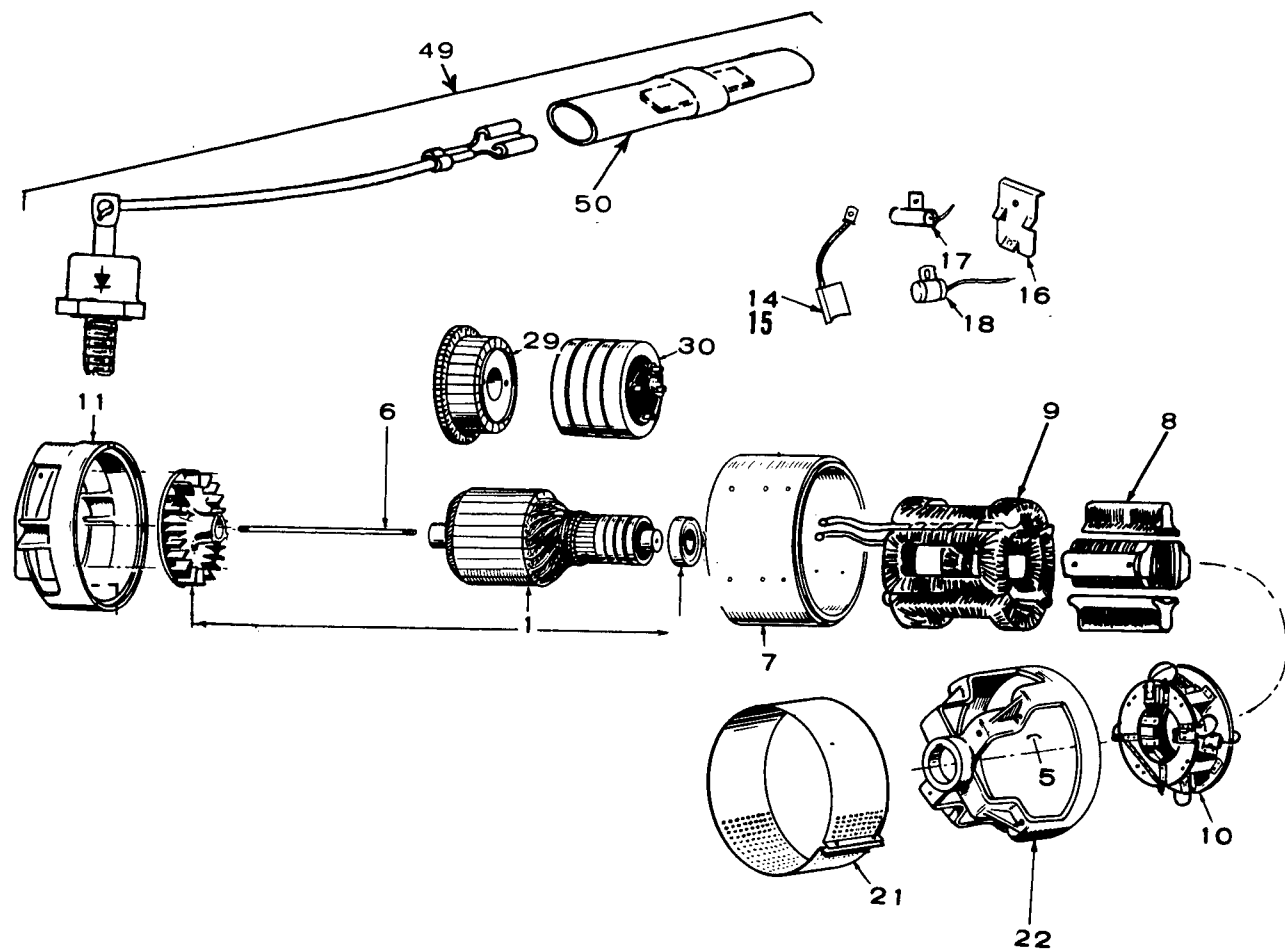
# CONTROL

REF. NO.	PART NO.	QTY. USED	PART DESCRIPTION
1	301-2525	1	Box, Control - Spec A and B
1A	301-3233	1	Box, Control - Begin Spec C
2	COVER, CONTROL BOX		
	301-1244	1	Spec A and B
	301-3102	1	Begin Spec C
3	301-1198	1	Bracket, Control Box Mounting - Spec A and B
3A	301-3227	1	Bracket, Control Box Mounting - Begin Spec C
7	RESISTOR, FIXED		
	304-0060	1	1.72-Ohm, 25 Watt
	304-0251	1	30-Ohm, 5 Watt
	304-0217	1	1-Ohm, 10 Watt (Spec A and B)
8	304-0483	1	Resistor, Tapped (6-Ohm, 225 Watt)
9	301-2597	1	Plate, Control Box End - Spec A and B
10	BOX, RESISTOR MOUNTING		
	301-2528	1	Spec A and B
	301-3235	1	Begin Spec C
11	308-0002	1	Switch, High Air Temperature - Begin Spec C
12	BLOCK, TERMINAL - REMOTE CONTROL		
	332-0745	1	Spec A and B
	332-0699	1	Begin Spec C
13	STRIP, MARKER		
	332-0922	1	Spec A and B
	332-1289	1	Begin Spec C
15	302-1360	1	Ammeter, Charge (10-0-10) - (Includes Hardware) Spec A and B
16	RELAY, STOP		
	307-0253	1	Spec A and B
	307-1052	1	Begin Spec C
17	RELAY, START DISCONNECT		
	307-0642	1	Spec A and B
	307-1070	1	Begin Spec C
18	305-0235	1	Rectifier - Spec A and B
19	305-0254	1	Bracket, Rectifier Heat Sink - Spec A and B
20	HARNESS, WIRING		
	338-0492	1	Spec A and B
	338-0511	1	Begin Spec C - Plants Without Fuel Solenoid Valve
	338-0747	1	Begin Spec C - Plants With Fuel Solenoid Valve
23	508-0001	4	Grommet - Begin Spec C
24	CABLE, BATTERY		
	416-0036	1	42" Long
	416-0037	1	48" Long
35	320-0104	1	Switch, Low Oil Pressure Lockout - Spec A and B
36	305-0383	1	Relay, Charge Regulator
37	323-0807	1	Socket and Chassis Assembly, Start Disconnect (Includes Leads) - Begin Spec C
38	300-0734	1	Amplifier Assembly, Start-Disconnect (Includes Parts Marked *) - Begin Spec C
39	359-0028	1	*Diode, Zener
40	350-0979	1	*Resistor (470-Ohm, 2 Watt)
41	350-0985	1	*Resistor (820-Ohm, 2 Watt)
42	350-0397	1	*Resistor (2700-Ohm, 1/2 Watt)
43	362-0032	1	*Transistor
45	301-3306	1	Spring, Relay Hold-down - Begin Spec C
46	301-3307	1	Spacer, Relay to Amplifier - Begin Spec C

\* - Included in 300-0734 Amplifier Assembly.

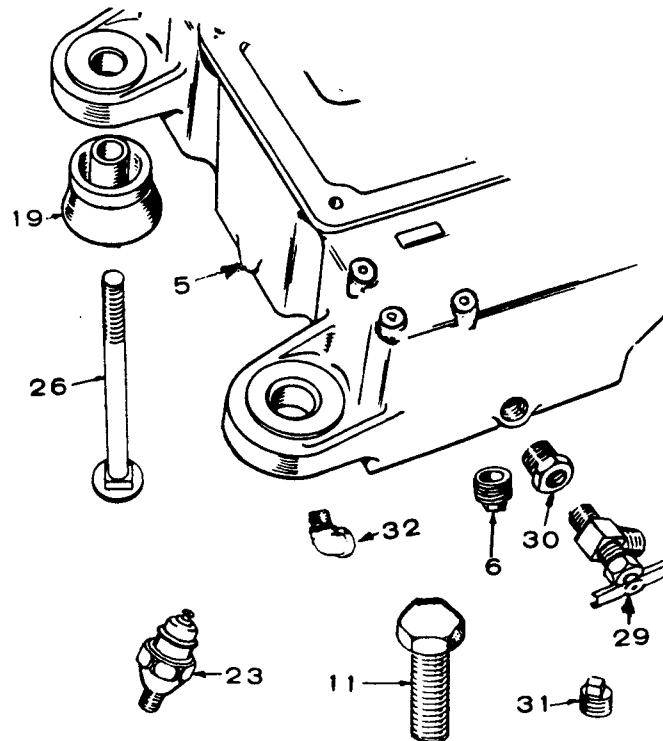


# GENERATOR



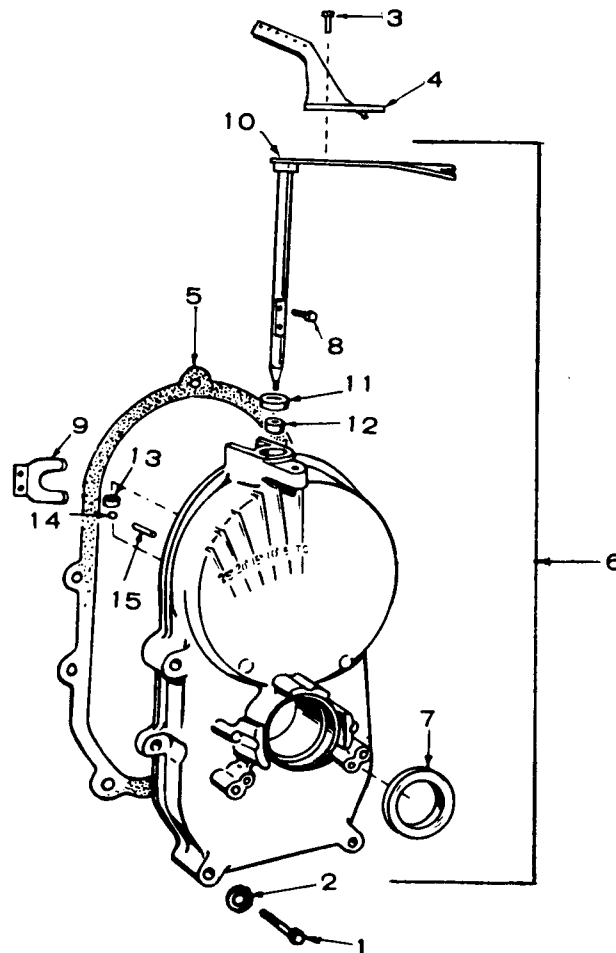
REF NO.	PART NO.	QTY USED	PART DESCRIPTION	REF NO.	PART NO.	QTY USED	PART DESCRIPTION
1			Armature Assembly (Includes Bearing and Blower)	17			Condenser (.5 Mfd) DC
	201-1313	1	60 Hertz (120 Volts)		312-0017	1	120 Volt
	201-1314	1	60 Hertz (120/240 Volts)		312-0027	1	120/240 Volt
6			Stud, Through Armature	18			Condenser (.1 Mfd) AC
	520-0407	1	120 Volt		312-0058	1	120 Volt
	520-0595	1	120/240 Volt		312-0058	2	120/240 Volt
7	210-0238	1	Frame (Machined and Drilled)	21			Band, End Bell
8	221-0090	4	Shoe, Pole - Field		234-0255	1	120 Volt
9	222-1639	1	Coil Assembly, Field (Set of 4 Coils)		234-0256	1	120/240 Volt
10			Rig Assembly, Brush	22			End Bell
	212-0293	1	120 Volt		211-0097	1	120 Volt
	212-0295	1	120/240 Volt		211-0098	1	120/240 Volt
11	231-0123	1	Adapter, Generator to Engine	29	203-0127	1	Commutator
14			Brush, Collector Ring (AC)	30			Collector Ring
	214-0056	4	120 Volt		204-0009	1	120 Volt
	214-0056	3	120/240 Volt		204-0010	1	120/240 Volt
15	214-0061	4	Brush, Commutator (DC)	49	305-0397	1	Rectifier Assembly (Includes Lead and Connector)
16			Spring, Brush	50	332-0556	1	Connector, Quick-Disconnect
	212-1105	8	120 Volt				
	212-1105	7	120/240 Volt				

## OIL SYSTEM



REF. NO.	PART NO.	QTY. USED	PART DESCRIPTION
5	102-0579	1	Base, Oil
6	505-0056	1	Plug, Pipe - Square Head (1/2" NPT) Used up thru Serial #496751 During Spec D
11	801-0048	1	Screw, Cap - Hex Head (Oil By- Pass) (3/8-24 x 3/4")
19	CUSHION, VIBRATION		
	402-0283	2	Engine End
	402-0284	2	Generator End
23	309-0237	1	Switch, Low Oil Pressure - Used Beginning Serial #496752, During Spec D
26	816-0206	4	Bolt, Carriage - Set Mounting (7/16-14 x 3-1/2")
29	504-0092	1	Valve, Drain - Oil - Used Beginning Serial #496752, During Spec D
30	505-0019	1	Bushing, Reducer - Oil Drain - Used Beginning Serial #496752, During Spec D
31	505-0057	1	Plug, Pipe - Square Head (1/8" NPT) - Installed in Oil Line Tee
32	505-0050	1	Elbow, Pipe - Street - Oil Drain (1/2" NPT) - Used up thru Serial #496751 During Spec D

# GEARCASE



REF. NO.	PART NO.	QTY. USED	PART DESCRIPTION
1	SCREW, CAP - HEX HEAD		
	800-0032	4	5/16-18 x 1-3/4"
	800-0034	1	5/16-18 x 2-1/4"
2	526-0065	5	Washer, Flat - Copper (21/64" ID x 9/16" OD x 1/16" Thk)
3	815-0181	1	Screw, Tapping - Hex Head with External Tooth Lock- washer (#10-32 x 1/2")
4	150-1073	1	Arm, Extension
5	103-0011	1	Gasket, Gearcase
6	GEARCASE ASSEMBLY		
	103-0333	1	Spec A and B (See Standard Parts Section for Components)
	103-0386	1	Begin Spec C (Includes the following Components)
7	509-0040	1	Seal, Oil - Crankshaft
8	815-0046	2	Screw, Machine - Pan Head, Cross-Recessed (#8-32 x 3/8")
9	150-1187	1	Yoke, Governor Shaft
10	150-1260	1	Shaft and Arm, Governor
11	509-0008	1	Seal, Oil
12	510-0013	1	Bearing, Needle
13	510-0008	1	Bearing, Needle
14	510-0014	1	Ball, Bearing
15	516-0130	1	Pin, Roll