

The following catalog
has gaps in its page
numbers, or doesn't
have any numbers.
We have chosen to
leave the page
numbering in the
order that Acrobat
assigns it.

1 A3 ***** DATA TABLE

STANDARD GROUPS


FICHE LOCATION

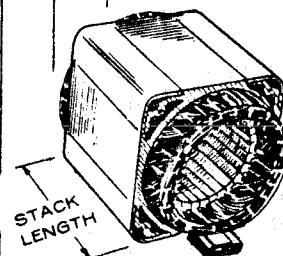
ILLUSTRATION

1 B7	*****	BATTERY CHARGER AND RUNNING LIGHT - OPTIONAL
1 A9	*****	BELL, END - BEGIN SPEC C
1 B3	*****	BELL, END - SPEC A THRU B
1 B5	*****	BOARD, PRINTED CIRCUIT - IDLE-MATIC CONTROL (300-1185)
1 B11	*****	BOX ASSEMBLY, RECEPTACLE (REMOTE) - SPEC A THRU B - OPTIONAL
1 B1	*****	BOX, RECEPTACLE - STANDARD FOR 50 HERTZ - OPTIONAL FOR 60 HERTZ - BEGIN SPEC C
1 A11	*****	BOX, RECEPTACLE - 60 HERTZ (END BELL MOUNTED) - BEGIN SPEC C
1 B9	*****	CONTROL, IDLE-MATIC - OPTIONAL
1 A3	*****	DOLLY - OPTIONAL
1 A5	*****	ENGINE AND CARRYING FRAME
1 A7	*****	GENERATOR
1 B13	*****	SERVICE KITS AND MISCELLANEOUS

To determine correct column in this parts catalog, check generator set nameplate (ONAN) for complete model and generator output. Also determine generator stack length.

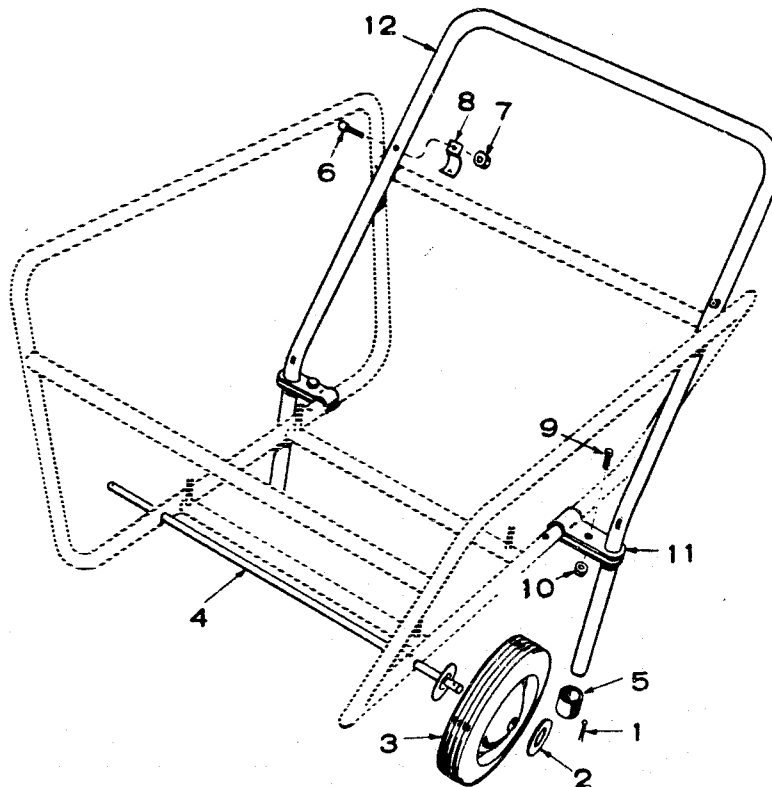
PART DESCRIPTION	QUANTITY USED										
	A	B	C	D	E	F	G	H	J	K	
TM - Use Column A Up to 1000 Watt, 50 Hertz Up to 1200 Watt, 60 Hertz 1-1/2" Generator Stack Length	X										
TN - Use Column B 1001 through 1400 Watt, 50 Hertz 1201 through 1750 Watt, 60 Hertz 2-1/4" Generator Stack Length		X									
TP - Use Column C 1401 through 1600 Watt, 50 Hertz 1751 through 2000 Watt, 60 Hertz 2-1/4" Generator Stack Length			X								
TR - Use Column D 1601 through 2500 Watt, 50 Hertz 2001 through 3000 Watt, 60 Hertz 3" Generator Stack Length				X							
TS - Use Column E 2501 through 3700 Watt, 50 Hertz 3001 through 4500 Watt, 60 Hertz 4-1/2" Generator Stack Length					X						
TT - Use Column F 3701 through 4500 Watt, 50 Hertz 4501 through 6000 Watt, 60 Hertz 6" Generator Stack Length						X					
CONSTRUCTOR'S MODEL											
TR - Use Column D				X							
TS - Use Column E					X						
TT - Use Column F						X					





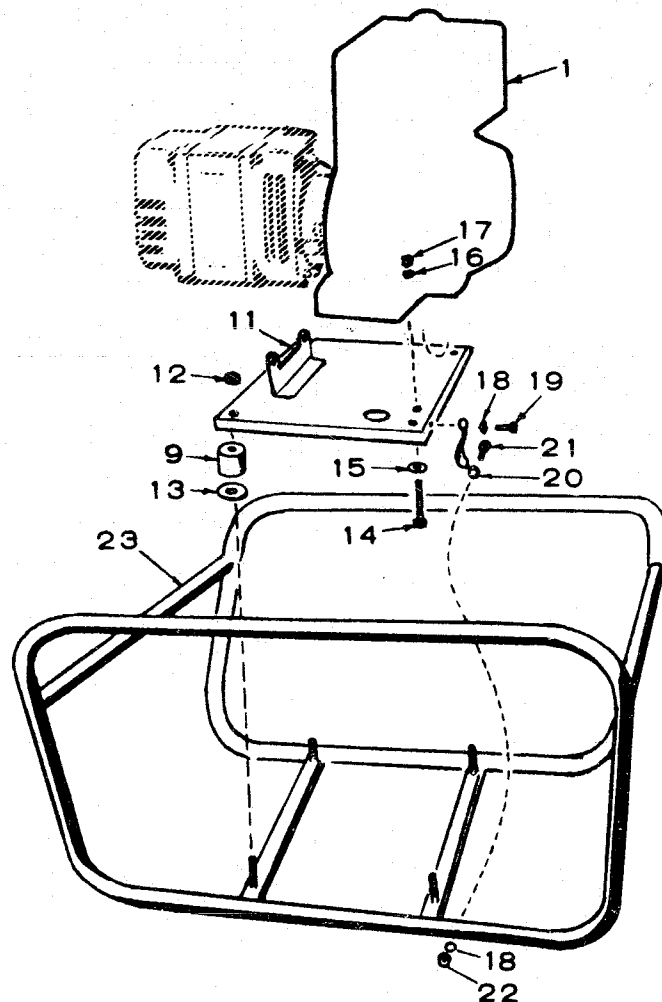
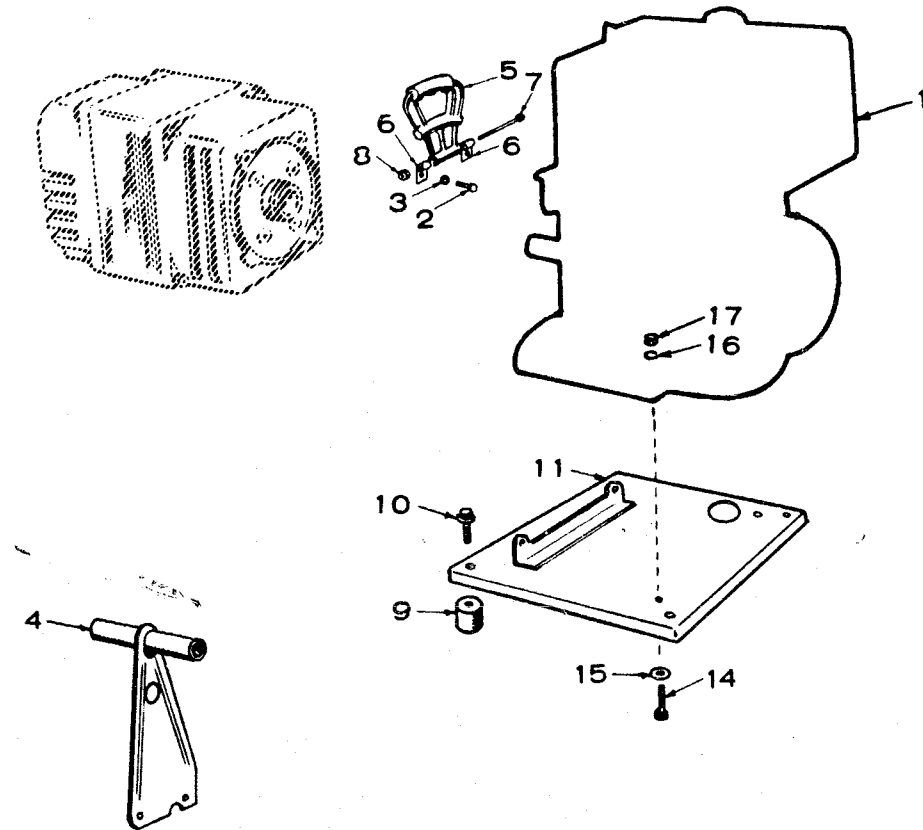
Three voltage ranges are used on 50 Hertz sets. Refer to ELECTRIC DATA in the OPERATOR'S PORTION of this manual for proper identification. The only part change between these voltage ranges is the Stator Assembly. Receptacles are not furnished by Onan on the 50 Hertz sets.

DOLLY - OPTIONAL



REF NO.	PART NUMBER	PART DESCRIPTION	QUANTITY USED									
			A	B	C	D	E	F	G	H	J	I
	410-0640	Dolly Package - Complete				1	1	1				
1	516-0042	Pin, Cotter				2	2	2				
2	526-0219	Washer, Flat (17/32" ID x 1" OD x 1/8" Thk)				6	6	6				
3	410-0618	Wheel, Dolly				2	2	2				
4	410-0658	Axle, Dolly				1	1	1				
5	403-0588	Tip, Handle				2	2	2				
6	800-0009	Screw, Cap - Hex Head (1/4-20 x 1-1/2")				2	2	2				
7	870-0212	Nut, Hex (1/4")				2	2	2				
8	331-0112	Clamp, Handle				2	2	2				
9	821-0016	Screw, Cap - Hex Head - Locking (5/16-18 x 3/4")				2	2	2				
10	870-0257	Nut, Hex (5/16")				2	2	2				
11	410-0634	Clamp, Frame				2	2	2				
12	410-0639	Handle, Dolly				1	1	1				

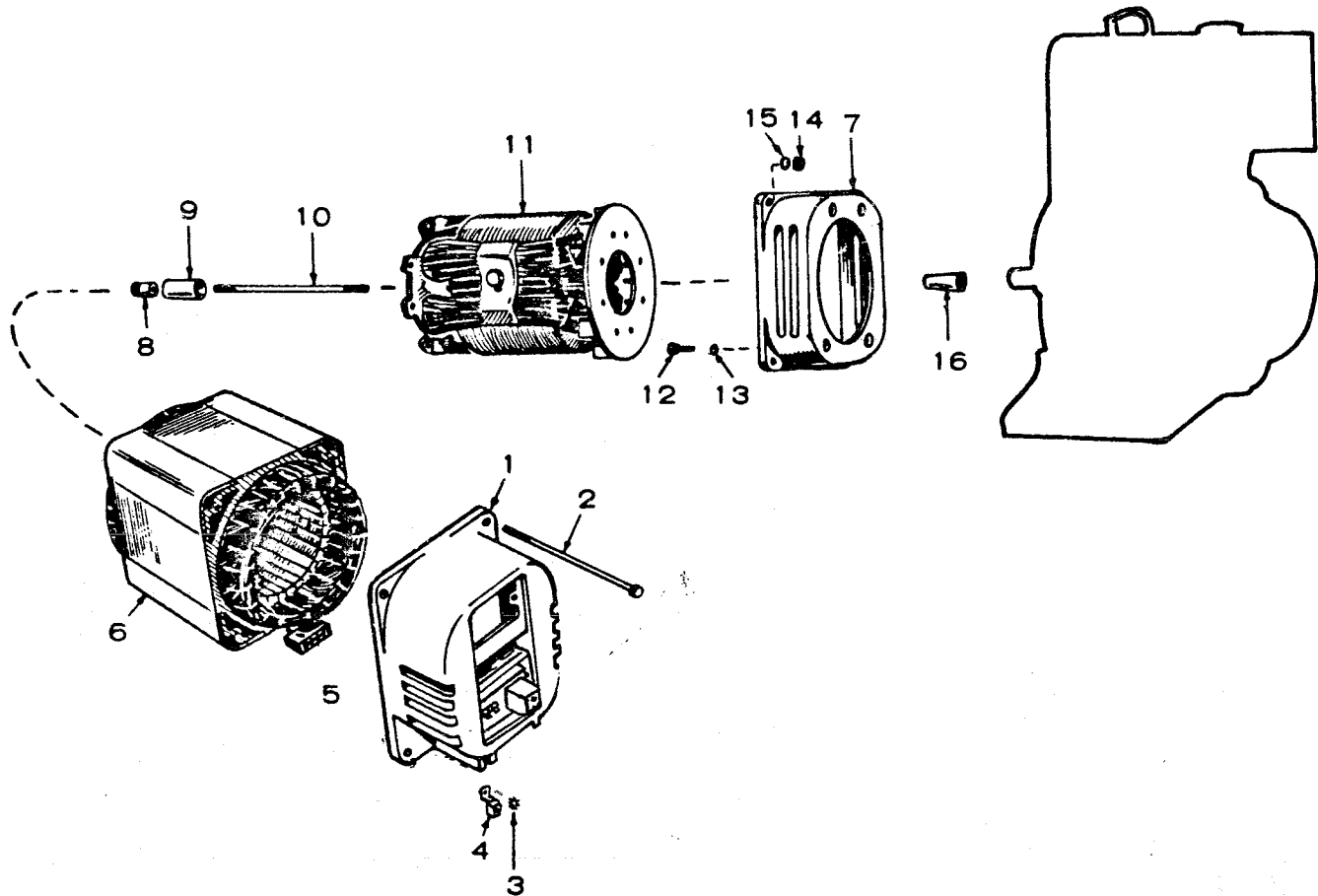
ENGINE AND CARRYING FRAME



ENGINE AND CARRYING FRAME

REF NO.	PART NUMBER	PART DESCRIPTION	QUANTITY USED									
			A	B	C	D	E	F	G	H	J	K
1	ENGINE (Refer to Manufacturer for Component Parts)											
	100-1285	3-1/2 Horsepower (Tecumseh Model H35 Spec H35-45426)	1									
	100-1286	4 Horsepower (Tecumseh Model HS40 Spec HS40-55467)		1								
	100-1287	5 Horsepower (Tecumseh Model HS50 HS50-67081)			1							
	100-1288	8 Horsepower (Tecumseh Model HM80 Spec HM80-155102)				1						
	100-1289	10 Horsepower (Tecumseh Model HH100 Spec HH100-115212)					1					
	100-1290	14 Horsepower (Tecumseh Model HH140 Spec HH140-160014)						1				
2	800-0025	Screw, Cap - Hex Head (5/16-18 x 5/8")	2	2	2							
3	850-0045	Washer, Lock - Spring (5/16")	2	2	2							
4	403-1047	Handle, Carrying - Spec A and B	1	1	1							
5	403-1173	Handle, Carrying - Begin Spec C	1	1	1							
6	403-1172	Hinge, Carrying Handle - Begin Spec C	2	2	2							
7	800-0021	Screw, Cap - Hex Head (1/4-20 x 4-1/2")										
		Begin Spec C	1	1	1							
8	870-0065	Nut, Hex - Self Locking - Begin Spec C	1	1	1							
9	402-0425	Dampener, Vibration	4	4	4							
9	402-0420	Dampener, Vibration				4						
9	402-0421	Dampener, Vibration					4	4				
10	821-0014	Screw, Cap - Hex Head Locking (5/16-18 x 1/2")	4	4	4							
11	403-1044	Base, Mounting	1	1	1							
11	403-1081	Base, Mounting				1						
11	403-1080	Base, Mounting					1	1				
12	870-0297	Nut, Hex - Self Locking (3/8-16)				4	4	4				
13	526-0123	Washer, Flat (25/64" ID x 1-1/4" OD x .598 Thk)				4	4	4				
14	800-0030	Screw, Cap - Hex Head (5/16-18 x 1-1/4")	2	2	2							
14	800-0051	Screw, Cap - Hex Head (3/8-16 x 1-1/4")				2	2	2				
15	526-0022	Washer, Flat (21/64" ID x 9/16 OD x 1/16" Thk)	2	2	2							
15	526-0013	Washer, Flat (25/64" ID x 1" OD x 1/16" Thk)				2	2	2				
16	850-0045	Washer, Lock - Spring (5/16")	2	2	2							
16	850-0050	Washer, Lock - Spring (3/8")				2	2	2				
17	862-0015	Nut, Hex (5/16-18)	2	2	2							
17	862-0003	Nut, Hex (3/8-16)				2	2	2				
18	856-0006	Washer, Lock - EIT (1/4")				2	2	2				
19	800-0003	Screw, Cap - Hex Head (1/4-20 x 1/2")				1	1	1				
20	337-0097	Strap, Ground				1	1	1				
21	800-0009	Screw, Cap - Hex Head (1/4-20 x 1/2")				1	1	1				
22	862-0001	Nut, Hex (1/4-20)				1	1	1				
23	403-1098	Frame, Carrying				1						
23	403-1097	Frame, Carrying					1	1				

GENERATOR

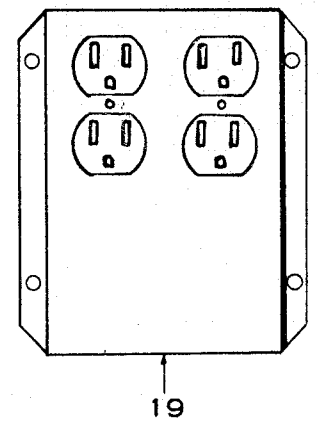
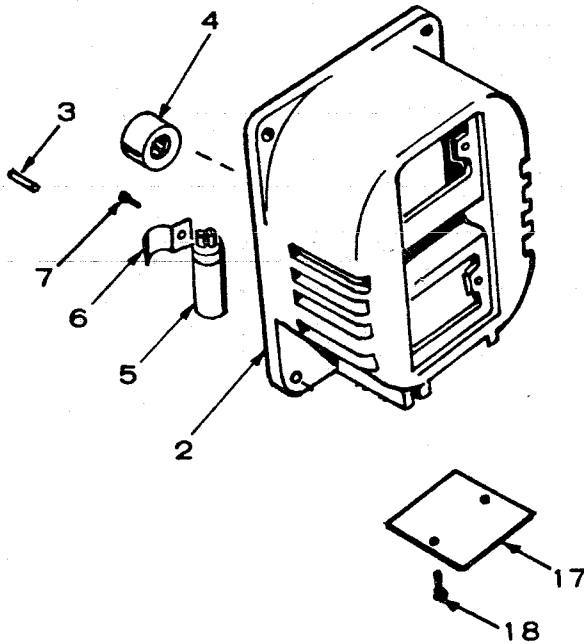
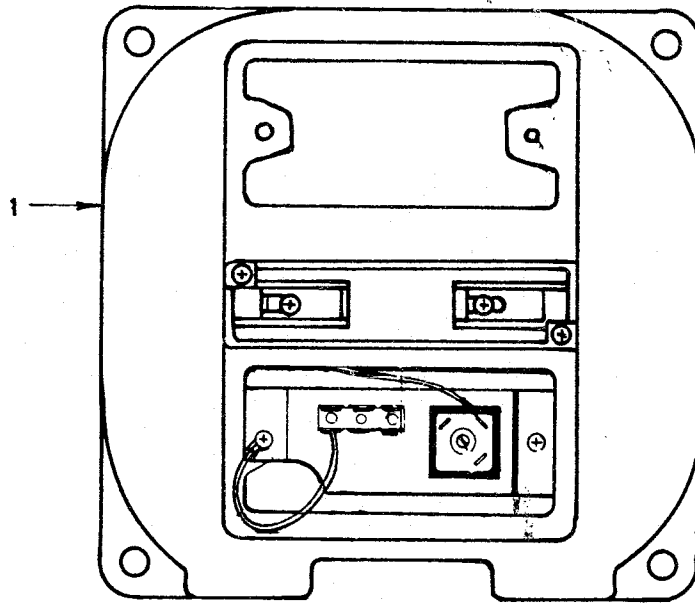


REF NO.	PART NUMBER	PART DESCRIPTION	QUANTITY USED										
			A	B	C	D	E	F	G	H	J	K	
1		End Bell Assembly (See Separate Group)	1	1	1	1	1	1					
2	800-0017	Screw, Cap - Hex Head (1/4-20 x 3-1/2")	4										
2	800-0021	Screw, Cap - Hex Head (1/4-20 x 4-1/2")		4	4								
2	800-0187	Screw, Cap - Hex Head (1/4-20 x 5-1/2")				4							
2	800-0188	Screw, Cap - Hex Head (1/4-20 x 6-1/2")					4						
2	800-0189	Screw, Cap - Hex Head (1/4-20 x 8")							4				
3	856-0006	Washer, Lock - EIT (1/4")	1	1	1	1	1	1					
4	332-0142	Terminal, Lug - Solderless	1	1	1	1	1	1					
5	323-0849	Housing, Tab Connector (Spec A and B)	1	1	1	1	1	1					
6	STATOR ASSEMBLY, WOUND												
	220-2392	100/200 Volt, 50 Hertz - Spec A and B	1										
	220-2393	100/200 Volt, 50 Hertz - Spec A and B		1	1								
	220-2394	100/200 Volt, 50 Hertz - Spec A and B				1							
	220-2395	100/200 Volt, 50 Hertz - Spec A and B					1						
	220-2396	100/200 Volt, 50 Hertz - Spec A and B						1					
	220-2554	100/200 Volt, 50 Hertz - Begin Spec C	1						1				
	220-2555	100/200 Volt, 50 Hertz - Begin Spec C		1	1								
	220-2556	100/200 Volt, 50 Hertz - Begin Spec C				1							
	220-2557	100/200 Volt, 50 Hertz - Begin Spec C					1						
	220-2558	100/200 Volt, 50 Hertz - Begin Spec C						1					
	220-2093	110/220 Volt, 50 Hertz - Spec A and B	1										
	220-2094	110/220 Volt, 50 Hertz - Spec A and B		1	1								
	220-2095	110/220 Volt, 50 Hertz - Spec A and B				1							
	220-2096	110/220 Volt, 50 Hertz - Spec A and B					1						
	220-2097	110/220 Volt, 50 Hertz - Spec A and B						1					

GENERATOR

REF NO.	PART NUMBER	PART DESCRIPTION	QUANTITY USED									
			A	B	C	D	E	F	G	H	J	I
		STATOR ASSEMBLY, WOUND (continued)										
	220-2562	110/220 Volt, 50 Hertz - Begin Spec C	1									
	220-2563	110/220 Volt, 50 Hertz - Begin Spec C		1	1							
	220-2564	110/220 Volt, 50 Hertz - Begin Spec C				1						
	220-2565	110/220 Volt, 50 Hertz - Begin Spec C					1					
	220-2566	110/220 Volt, 50 Hertz - Begin Spec C						1				
	220-2323	120/240 Volt, 50 Hertz - Spec A and B	1						1			
	220-2324	120/240 Volt, 50 Hertz - Spec A and B		1	1							
	220-2325	120/240 Volt, 50 Hertz - Spec A and B				1						
	220-2326	120/240 Volt, 50 Hertz - Spec A and B					1					
	220-2327	120/240 Volt, 50 Hertz - Spec A and B						1				
	220-2570	120/240 Volt, 50 Hertz - Begin Spec C	1									
	220-2571	120-240 Volt, 50 Hertz - Begin Spec C		1	1							
	220-2572	120/240 Volt, 50 Hertz - Begin Spec C				1						
	220-2573	120/240 Volt, 50 Hertz - Begin Spec C					1					
	220-2574	120/240 Volt, 50 Hertz - Begin Spec C						1				
	220-1949	120 Volt and 120/240 Volt, 50 Hertz - Spec A and B	1									
	220-1950	120 Volt and 120/240 Volt, 60 Hertz - Spec A and B		1	1							
	220-1951	120/240 Volt, 60 Hertz - Spec A and B				1						
	220-1952	120/240 Volt, 60 Hertz - Spec A and B					1					
	220-1953	120/240 Volt, 60 Hertz - Spec A and B						1				
	220-2472	120 Volt and 120/240 Volt, 60 Hertz - Begin Spec C	1									
	220-2473	120 Volt and 120/240 Volt, 60 Hertz - Begin Spec C		1	1							
	220-2474	120/240 Volt, 60 Hertz - Begin Spec C				1						
	220-2475	120/240 Volt, 60 Hertz - Begin Spec C					1					
	220-2476	120/240 Volt, 60 Hertz - Begin Spec C						1				
	220-2955	120 Volt and 120/240 Volt, 60 Hertz - Begin Spec F		1	1							
7	231-0198	Adapter, Generator	1									
7	231-0193	Adapter, Generator	1	1	1	1						
7	231-0195	Adapter, Generator					1	1				
8	870-0271	Nut, Internal Wrenching (5/16-18)	1	1	1	1	1	1				
9	202-0674	Sleeve, Shaft	1	1	1	1	1	1				
10	520-0806	Stud, Rotor Through (5/16 x 4-13/16")	1									
10	520-0807	Stud, Rotor Through (5/16 x 5-9/16")		1	1							
10	520-0808	Stud, Rotor Through (5/16 x 6-5/16")				1	1					
10	520-0809	Stud, Rotor Through (5/16 x 7-13/16")						1				
11	201-2020	Rotor Assembly	1									
11	201-2021	Rotor Assembly		1	1							
11	201-2022	Rotor Assembly				1						
11	201-2023	Rotor Assembly					1					
11	201-2024	Rotor Assembly						1				
12	801-0026	Screw, Cap - Hex Head (5/16-24 x 3/4")	4	4	4	4						
12	800-0049	Screw, Cap - Hex Head (3/8-16 x 7/8")					4	4				
13	854-0017	Washer, Lock - IT (5/16")	4	4	4	4						
13	854-0021	Washer, Lock - IT (3/8")					4	4				
14	862-0001	Nut, Machine - Hex (1/4 - 20)	4	4	4	4	4	4				
15	850-0040	Washer, Lock - Spring (1/4")	4	4	4	4	4	4				
16	202-0698	Adapter, Shaft				1						

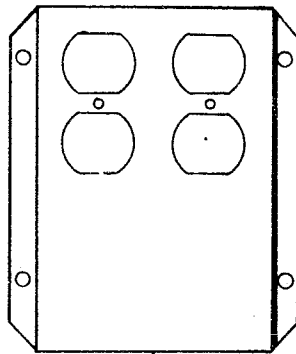
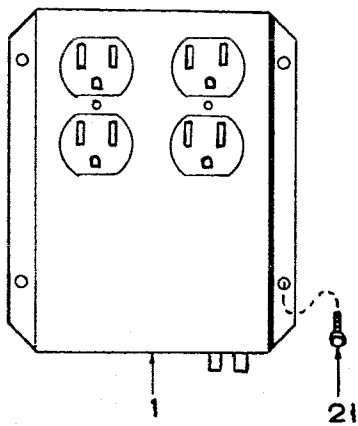
END BELL - BEGIN SPEC C



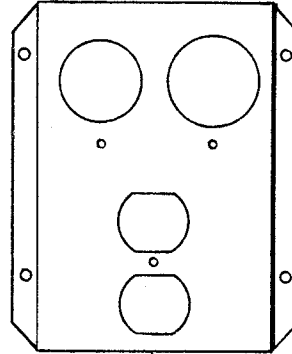
END BELL - BEGIN SPEC C

REF NO.	PART NUMBER	PART DESCRIPTION	QUANTITY USED									
			A	B	C	D	E	F	G	H	J	
1	211-0266	Bell Assembly, End (Includes Parts Marked *)	1	1	1	1	1	1				
2	211-0238	Bell Only, End*	1	1	1	1	1	1				
3	516-0182	Pin, Locating - End Bell*	4	4	4	4	4	4				
4	510-0107	Bearing, Roller*	1	1	1	1	1	1				
5	356-0056	Capacitor*	1	1	1	1	1	1				
6	312-0194	Bracket, Capacitor Mounting*	1	1	1	1	1	1				
7	815-0395	Screw, Tapping - Pan Head (#6 x 3/8")*	1	1	1	1	1	1				
8	212-1249	Guide, Brush*	1	1	1	1	1	1				
9	214-0099	Brush, Alternator*	2	2	2	2	2	2				
10	332-1564	Terminal Tab*	1	1	1	1	1	1				
11	815-0395	Screw, Tapping - Pan Head (#6 x 3/8")*	2	2	2	2	2	2				
12	815-0388	Screw, Tapping - Pan Head (#6 x 1/2")*	2	2	2	2	2	2				
13	232-2697	Bracket and Terminal Assembly*	1	1	1	1	1	1				
14	815-0395	Screw, Tapping - Pan Head (#6 x 3/8")*	2	2	2	2	2	2				
15	305-0548	Rectifier Bridge*	1	1	1	1	1	1				
16	815-0198	Screw, Machine - Round Head (#8-32 x 5/8")*	1	1	1	1	1	1				
17	234-0526	Cover, Protection	1	1	1	1	1	1				
18	815-0340	Screw, Cap - Hex Head - Tapping (#10 x 3/8")	2	2	2	2	2	2				
19		Receptacle Box Assembly - See Separate Group										

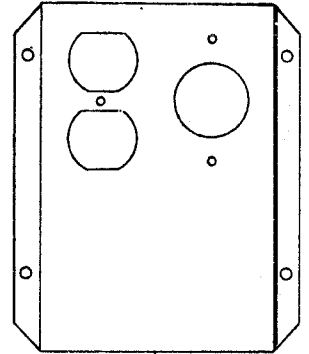
END BELL RECEPTACLE BOX - BEGIN SPEC C (60 HERTZ SETS)



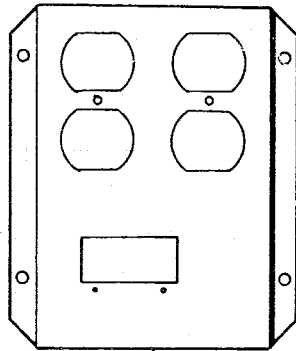
2



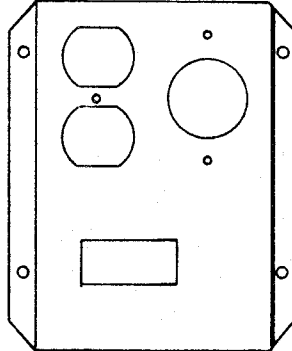
3



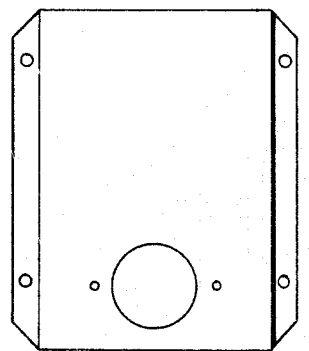
4



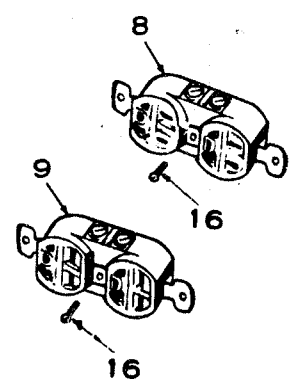
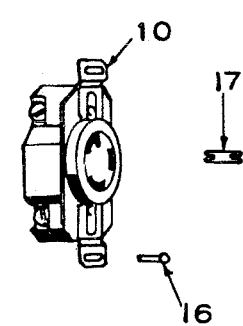
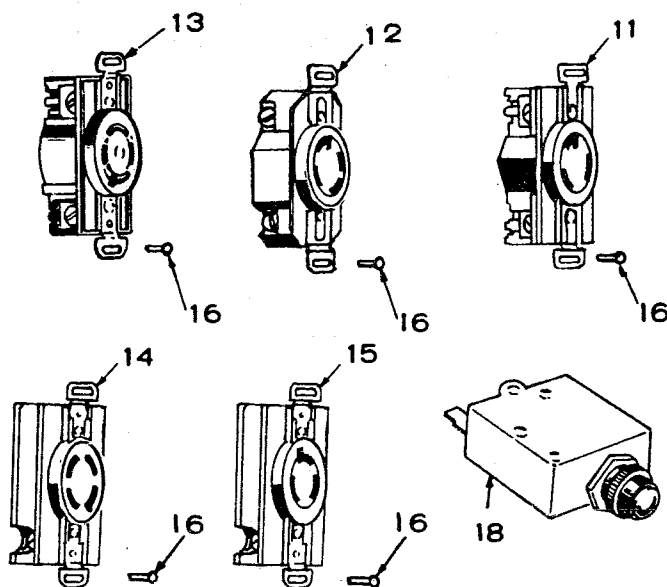
5



6



7



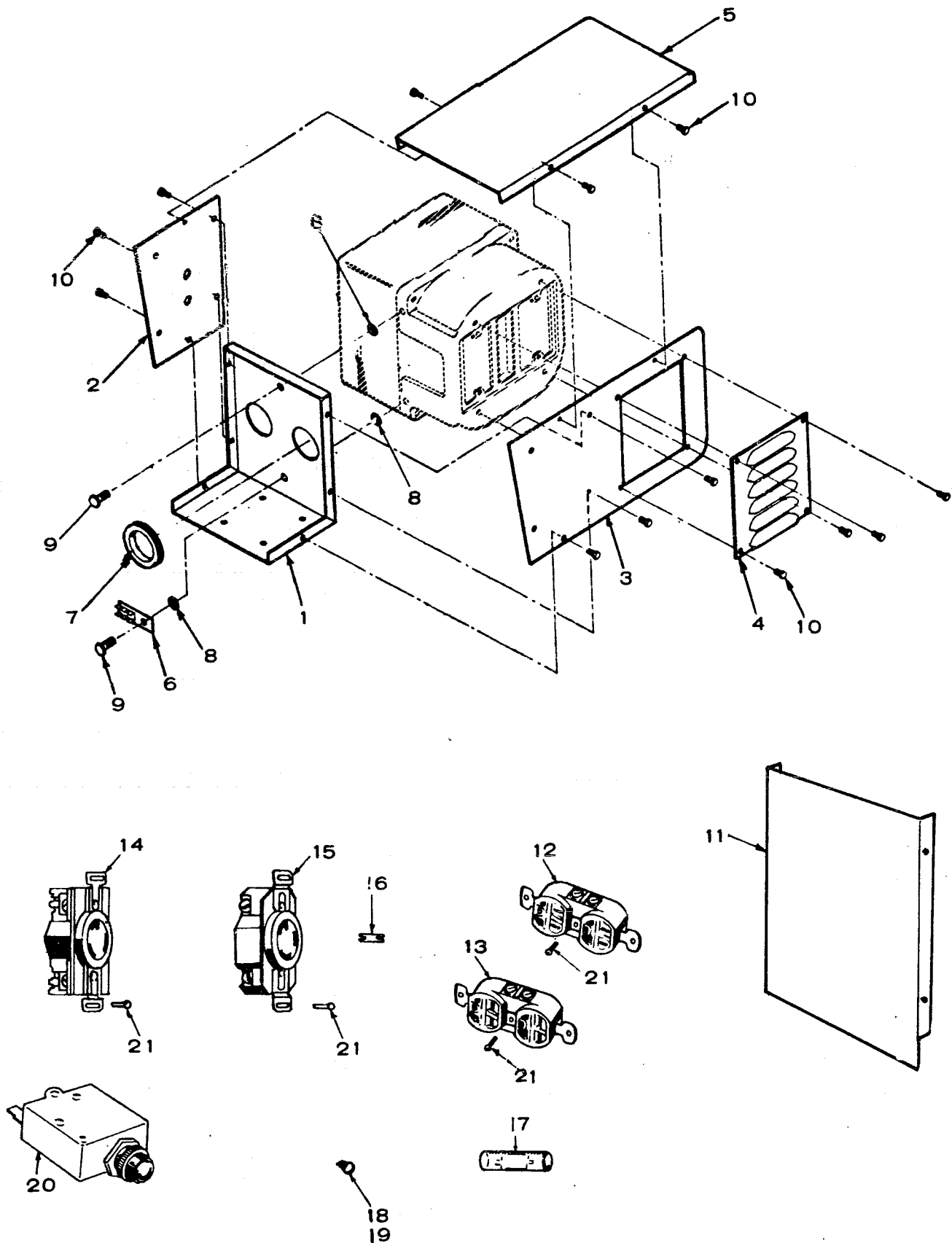
**END BELL RECEPTACLE BOX - BEGIN SPEC C
(60 HERTZ SETS)**

REF NO.	PART NUMBER	PART DESCRIPTION	QUANTITY USED									
			A	B	C	D	E	F	G	H	J	K
1	BOX ASSEMBLY RECEPTACLE											
	323-0969	With two 120 Volt Duplex Receptacles (Includes Parts Marked a)	1	1	1							
	323-0970	With two 120 Volt Duplex Receptacles and Voltmeter (Includes Parts Marked b)	1	1	1							
	323-0953	With two 120 Volt Duplex Receptacles, Voltmeter and two 15 Amp Circuit Breakers (Includes Parts Marked c)	1	1	1							
	323-0923	With two 120 Volt Duplex Receptacles and two 15 Amp Circuit Breakers (Includes Parts Marked d)	1	1	1							
	323-0967	With one 120 Volt and one 240 Volt Duplex Receptacles (Includes Parts Marked e)				1	1	1				
	323-0924	With one 120 Volt and one 240 Volt Duplex Receptacles and three 15 Amp Circuit Breakers (Includes Parts Marked f)				1	1	1				
	323-0954	With one 120 Volt and one 240 Volt Duplex Receptacles, Voltmeter, and three 15 Amp Circuit Breakers (Includes Parts Marked g)				1	1	1				
	323-0968	With one 120 Volt and one 240 Volt Duplex Receptacles and Voltmeter (Includes Parts Marked h)				1	1	1				
	323-0975	With one 120 Volt Duplex and one 20 Amp, 120/240 Volt, 3 Wire Twistlock Receptacles, one 15 Amp and two 25 Amp Circuit Breakers (Includes Parts Marked j)				1	1	1				
	323-0976	With one 120 Volt Duplex and one 20 Amp, 120/240 Volt, 3 Wire Twistlock Receptacles, Voltmeter, one 15 Amp and two 25 Amp Circuit Breakers (Includes Parts Marked k)				1	1	1				
	323-0973	With one 120 Volt Duplex and one 20 Amp, 120/240 Volt, 3 Wire Twistlock Receptacles (Includes Parts Marked l)				1	1	1				
	323-0972	With one 120 Volt Duplex and one 20 Amp, 120/240 Volt, 3 Wire Twistlock Receptacles and Voltmeter (Includes Parts Marked m)				1	1	1				
	323-0965	With one 120 Volt Duplex and one 20 Amp, 120/240 Volt, 4 Wire, Twistlock Receptacles (Includes Parts Marked n)				1	1	1				
	323-0961	With one 120 Volt Duplex and one 20 Amp, 120/240 Volt, 4 Wire Twistlock Receptacles and Voltmeter (Includes Parts Marked p)				1	1	1				
	323-0960	With one 120 Volt Duplex and one 20 Amp, 120/240 Volt, 4 Wire Twistlock Receptacles, Voltmeter, one 15 Amp and two 20 Amp Circuit Breakers (Includes Parts Marked q)				1	1	1				

**END BELL RECEPTACLE BOX - BEGIN SPEC C
(60 HERTZ SETS)**

[illegible]

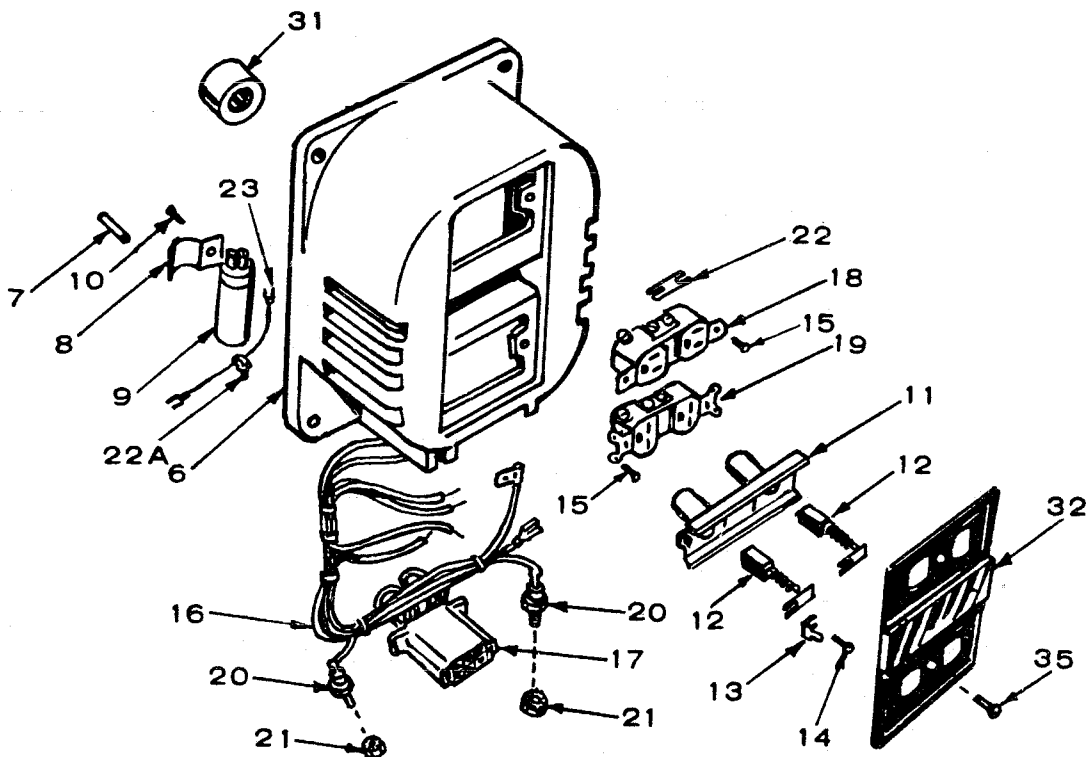
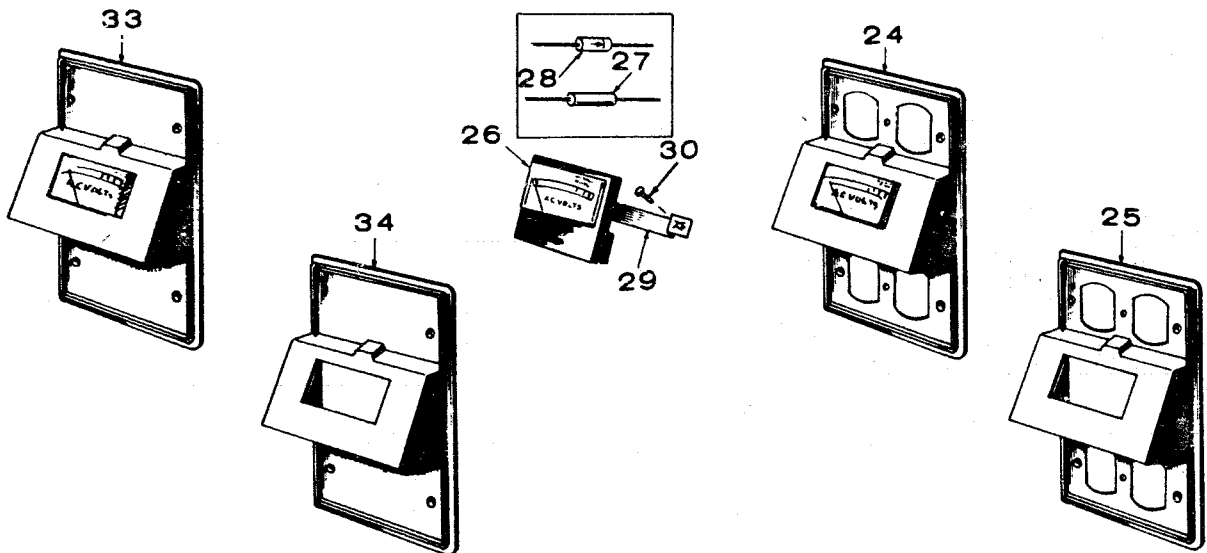
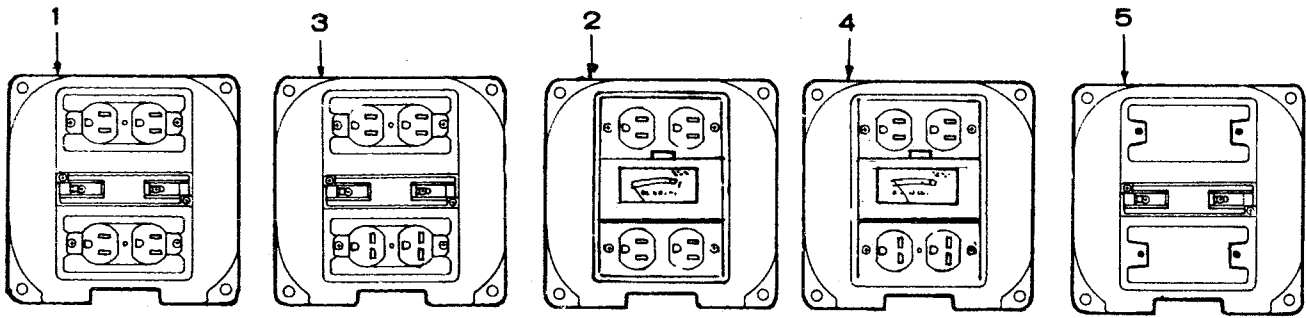
**SIDE MOUNTED RECEPTACLE BOX - BEGIN SPEC C
(STANDARD FOR 50 HERTZ - OPTIONAL FOR 60 HERTZ)**



SIDE MOUNTED RECEPTACLE BOX - BEGIN SPEC C
(STANDARD FOR 50 HERTZ - OPTIONAL FOR 60 HERTZ)

REF NO.	PART NUMBER	PART DESCRIPTION	QUANTITY USED										
			A	B	C	D	E	F	G	H	J	K	
1	301-4072	Frame, Control	1	1	1	1	1	1					
2	301-4073	Panel, Control (Front)	1	1	1	1	1	1					
3	301-4074	Panel, Control (Rear)	1	1	1	1	1	1					
4	301-4079	Panel, Louver (Rear)	1	1	1	1	1	1					
5	COVER, CONTROL (TOP)												
	301-4080	Left Side Mount	1	1	1	1	1	1					
	301-4081	Right Side Mount	1	1	1	1	1	1					
6	232-2636	Bracket and Terminal Assembly	1	1	1	1	1	1					
7	508-0051	Grommet, Rubber	1	1	1	1	1	1					
8	854-0020	Washer, Lock - IT (3/8")	3	3	3	3	3	3					
9	815-0384	Screw, Cap - Hex Head (3/8-16 x 3/4")	2	2	2	2	2	2					
10	815-0340	Screw, Cap - Hex Head (#10-32 x 3/8")	13	13	13	13	13	13					
11	PANEL, RECEPTACLE												
	301-4077	Blank - 50 Hertz Sets	1	1	1	1							
	301-4200	Holes for Circuit Breakers Only - 50 Hertz Sets					1	1					
	301-4075	Holes for 2 Duplex Receptacles, 4 Circuit Breakers and Battery Charger - 60 Hertz Sets	1	1	1	1	1	1					
	301-4076	Holes for 2 Twistlock Receptacles, one Duplex Receptacle, 4 Circuit Breakers and Battery Charger - 60 Hertz Sets	1	1	1	1	1	1					
12	323-0383	Receptacle, Duplex (120 Volt) Parallel Blades - 60 Hertz Sets			As Required								
13	323-0213	Receptacle, Duplex (240 Volts) Tandem Blades - 60 Hertz Sets			As Required								
14	323-0855	Receptacle - Twistlock (20 Amp, 240 Volt) - 60 Hertz Sets			As Required								
15	323-0854	Receptacle - Twistlock (30 Amp, 125 Volt) - 60 Hertz Sets			As Required								
16	323-0869	Strap, Ground - Receptacle - 60 Hertz Sets			As Required								
17	332-1556	Connector, Faston - 60 Hertz Sets			As Required								
18	517-0132	Plug, Hole (7/16")			As Required								
19	517-0135	Plug, Hole (5/8")			As Required								
20	BREAKER, CIRCUIT												
	320-0540	15 Ampere			As Required								
	320-0541	20 Ampere			As Required								
	320-0542	25 Ampere			As Required								
	320-0543	30 Ampere			As Required								
21	812-0061	Screw, Machine - Round Head (#6-32 x 3/8")			As Required								

END BELL - SPEC A THRU B



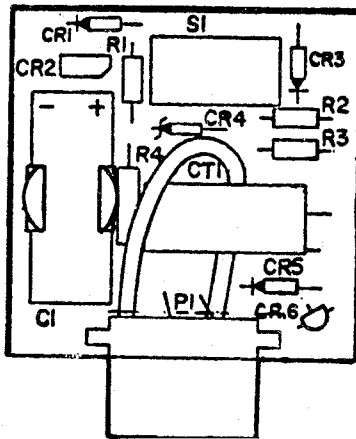
END BELL - SPEC A THRU B

REF NO.	PART NUMBER	PART DESCRIPTION	QUANTITY USED										
			A	B	C	D	E	F	G	H	J	K	
1	211-0243	End Bell Assembly - 120 Volt Sets (Includes Parts Marked *)	1	1	1								
2	211-0257	End Bell Assembly with Optional Voltmeter- 120 Volt Sets (Includes Parts Marked Δ)	1	1	1								
3	211-0247	End Bell Assembly - 120/240 Volt Sets (Includes Parts Marked †)				1	1	1					
4	211-0258	End Bell Assembly with Optional Voltmeter- 120/240 Volt Sets (Includes Parts Marked £)				1	1	1					
5	211-0245	End Bell Assembly - 120/240 Volt Sets with Separate Receptacle Box - Optional on 60 Hertz and Standard on 50 Hertz Sets (Includes Parts Marked •)				1	1	1					
6	211-0238	End Bell Housing *Δ†£•	1	1	1	1	1	1					
7	516-0182	Pin, Locating *Δ†£•	4	4	4	4	4	4					
8	312-0194	Bracket, Capacitor Mounting *Δ†£•	1	1	1	1	1	1					
9	356-0056	Capacitor *Δ†£•	1	1	1	1	1	1					
10	815-0395	Screw, Pan Head (#6-32 x 3/8") *Δ†£•	1	1	1	1	1	1					
11	212-1249	Guide, Brush *Δ†£•	1	1	1	1	1	1					
12	214-0099	Brush, Generator *Δ†£•	2	2	2	2	2	2					
13	332-1564	Terminal, Lug *Δ†£•	1	1	1	1	1	1					
14	815-0388	Screw, Pan Head (#6-32 x 1/2") *Δ†£•	2	2	2	2	2	2					
15	815-0395	Screw, Pan Head (#6-32 x 3/8") *Δ†£•	4	4	4	4	4	4					
16	338-0716	Harness, Assembly, Wiring - 120 Volt Generator Sets (Includes Parts Marked #) *Δ	1	1	1								
16	338-0717	Harness Assembly, Wiring - 120/240 Volt Generator Sets (Includes Parts Marked ‡)†£				1	1	1					
16	338-0727	Harness Assembly, Wiring - 120/240 Volt 60 Hertz Generator Sets with Separate Receptacle Box and 50 Hertz Sets - Optional (Includes Parts Marked §)•				1	1	1					
17	323-0848	Connector, Plug #†§	1	1	1	1	1	1					
18	323-0383	Receptacle, Duplex (120 Volt) #†	2	2	2	1	1	1					
19	323-0213	Receptacle, Duplex (240 Volt) ‡				1	1	1					
20	358-0015	Rectifier, Diode #†§	2	2	2	2	2	2					
21	870-0131	Nut, Hex with Lockwasher #†§	2	2	2	2	2	2					
22	323-0869	Strap, Ground #†	1	1	1	1	1	1					
22	332-0942A	Tie, Cable *Δ†£•	3	3	3	3	3	3					
23	336-2220	Lead, Electrical - Capacitor to Ground *Δ†£•	1	1	1	1	1	1					
24	232-2464	Cover Assembly, End Bell - Generator Sets with Optional Voltmeter (Includes Parts Marked □)Δ£	1	1	1	1	1	1					
25	232-2439	Cover Only, End Bell - Generator Sets with Optional Voltmeter □	1	1	1	1	1	1					
26	302-0917	Voltmeter, Optional □Ø	1	1	1	1	1	1					
27	350-0131	Resistor (Part of Optional Voltmeter) □Ø	1	1	1	1	1	1					
28	357-0004	Diode (Part of Optional Voltmeter) □Ø	1	1	1	1	1	1					

END BELL - SPEC A THRU B

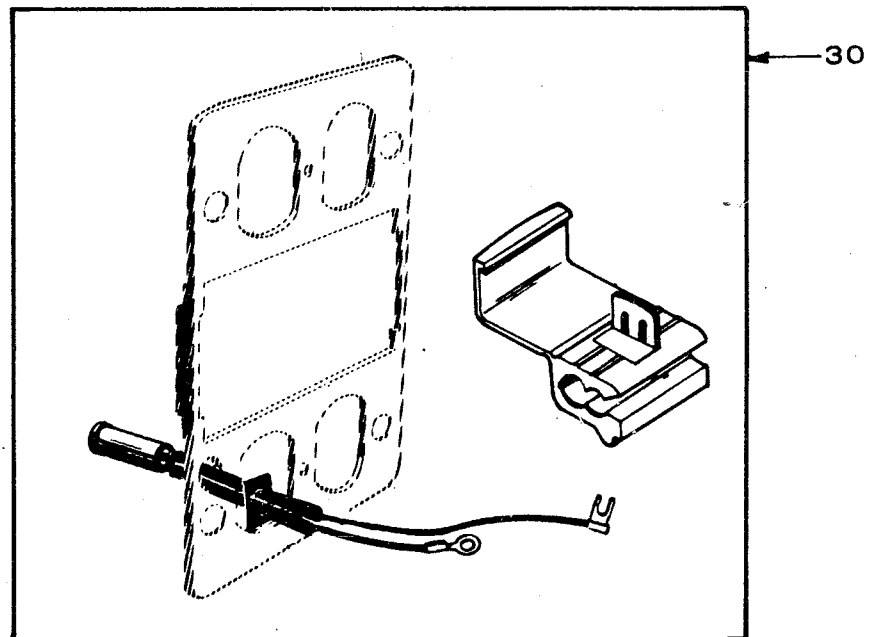
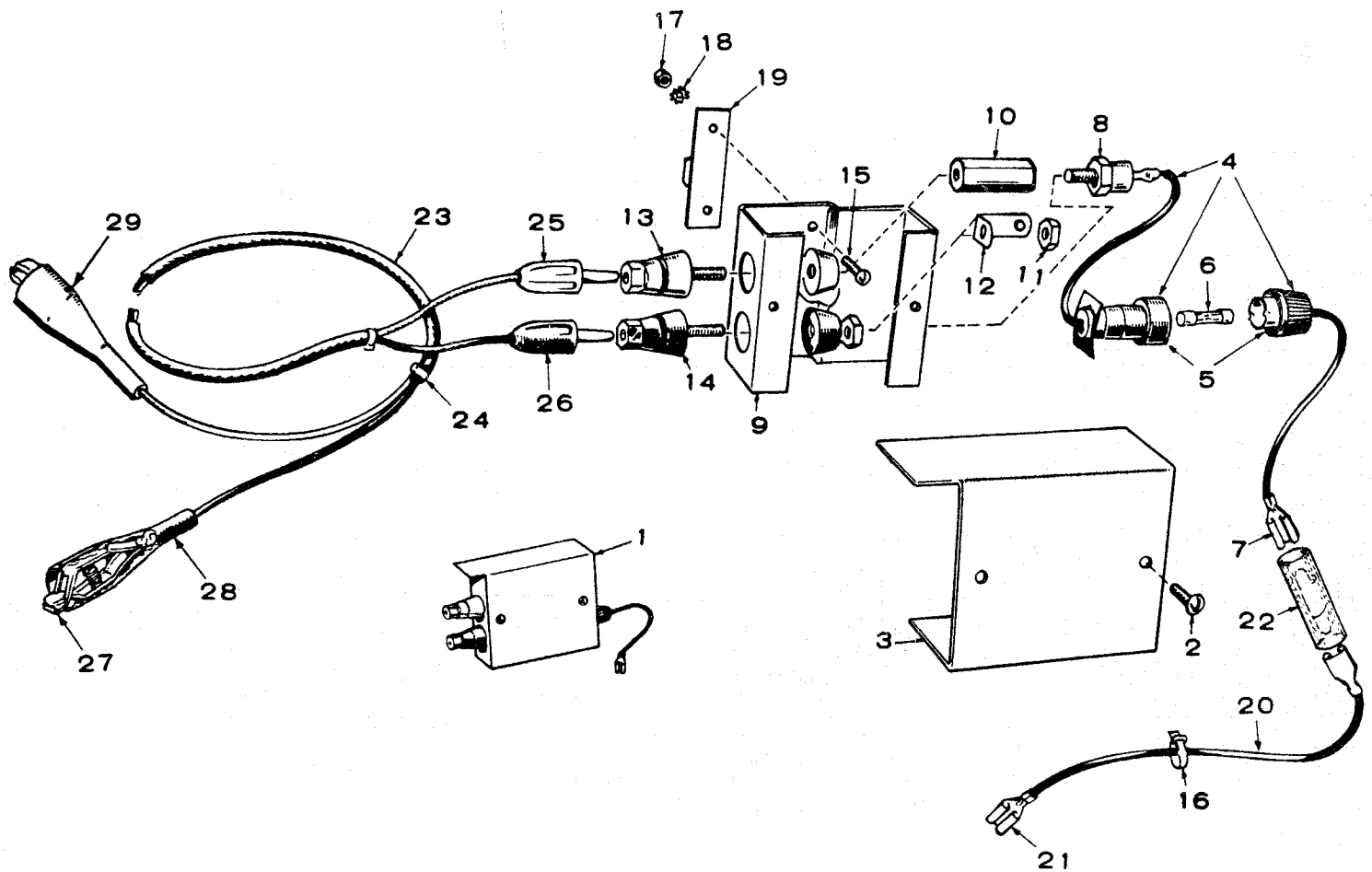
REF NO.	PART NUMBER	PART DESCRIPTION	QUANTITY USED										
			A	B	C	D	E	F	G	H	J	K	
29	870-0293	Push Nut, Twin □Ø	1	1	1	1	1	1					
30	815-0395	Screw, Pan Head (#6-32 x 3/8") □Ø	2	2	2	2	2	2					
31	510-0107	Bearing, Roller *Δ†£•	1	1	1	1	1	1					
32	232-2468	Cover, End Bell - Receptacles (60 Hertz Generator Sets)	1	1	1	1	1	1					
33	232-2449	Cover Assembly, End Bell - Generator Sets with Optional Voltmeter, without Receptacles in End Bell (Includes Parts Marked Ø	1	1	1	1	1	1					
34	232-2440	Cover Only - End Bell - Generator Sets with Optional Voltmeter, without Receptacles in the End Bell Ø	1	1	1	1	1	1					
35	815-0396	Screw, Machine - Fillister Head (#6-32 x 1/2")	2	2	2	2	2	2					
 * - Included in 211-0243 End Bell Assembly. Δ - Included in 211-0257 End Bell Assembly. † - Included in 211-0247 End Bell Assembly. £ - Included in 211-0258 End Bell Assembly. • - Included in 211-0245 End Bell Assembly. # - Included in 338-0716 Wiring Harness Assembly. ‡ - Included in 338-0717 Wiring Harness Assembly. § - Included in 338-0727 Wiring Harness Assembly. □ - Included in 232-2448 End Bell Cover Assembly. Ø - Included in 232-2449 End Bell Cover Assembly.													

PRINTED CIRCUIT BOARD (300-1185)
IDLE-MATIC CONTROL



REF NO.	PART NUMBER	PART DESCRIPTION	QUANTITY USED									
			A	B	C	D	E	F	G	H	J	K
	300-1185	Board Assembly, Printed Circuit - Complete										
C1	356-0061	Capacitor, Electrolytic (330 Mfd, 3 Volt)		1	1	1	1	1				
CR1	357-0004	Diode, Rectifier		1	1	1	1	1				
CR3	357-0004	Diode, Rectifier		1	1	1	1	1				
CR5	357-0004	Diode, Rectifier		1	1	1	1	1				
CR4	359-0036	Diode, Zener		1	1	1	1	1				
CR6	364-0018	Rectifier, Gate Controlled		1	1	1	1	1				
CR2	364-0005	Rectifier, Gate Controlled		1	1	1	1	1				
R2	350-0548	Resistor (10K Ohm, 1/2 Watt)		1	1	1	1	1				
R1	350-0557	Resistor (56K Ohm, 1/2 Watt)		1	1	1	1	1				
R3	350-0580	Resistor (100K Ohm, 1/2 Watt)		1	1	1	1	1				
R4	350-0800	Resistor (1 Ohm, 1/2 Watt)		1	1	1	1	1				
CT1	315-0403	Transformer		1	1	1	1	1				
S1	308-0367	Switch, Toggle		1	1	1	1	1				
P1	323-0915	Connector (Receptacle Housing)		1	1	1	1	1				

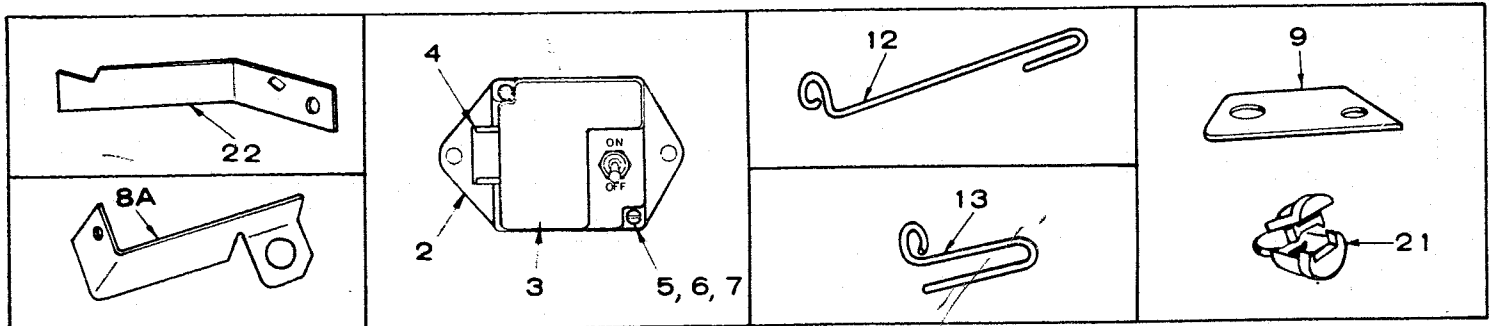
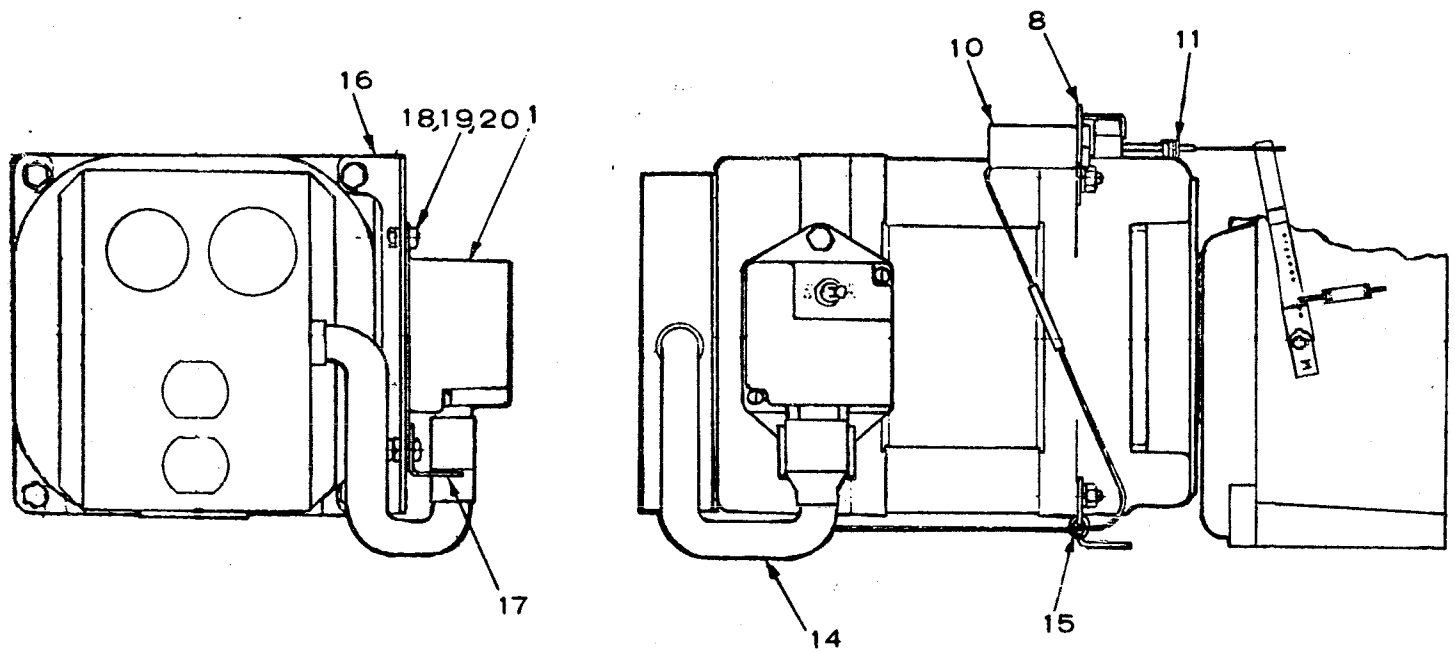
**BATTERY CHARGER AND RUNNING LIGHT
- OPTIONAL -**



BATTERY CHARGER AND RUNNING LIGHT - OPTIONAL -

REF NO.	PART NUMBER	PART DESCRIPTION	QUANTITY USED										
			A	B	C	D	E	F	G	H	J	K	
	305-0540	Charger Package, Battery - Complete with Mounting Hardware (Includes Parts Marked £)	1	1	1	1	1	1					
1	305-0527	Charger, Battery (Includes Parts Marked *)£	1	1	1	1	1	1					
2	815-0048	Screw, Machine - Round Head (#10-32 x 3/8")*	2	2	2	2	2	2					
3	232-2436	Cover, Charger*	1	1	1	1	1	1					
4	358-0059	Diode and Fuse Holder Assembly (Includes Parts Marked Δ)	1	1	1	1	1	1					
5	321-0203	Holder Assembly, Fuse (Includes Fuse) Δ	1	1	1	1	1	1					
6	321-0127	Fuse, Cartridge (15 Amp)Δ	1	1	1	1	1	1					
7	332-1497	Terminal, Lug - Faston Δ	1	1	1	1	1	1					
8	358-0016	Rectifier, Diode Δ	1	1	1	1	1	1					
9	232-2437	Bracket, Battery Charger Terminals*	1	1	1	1	1	1					
10	232-2438	Spacer, Threaded*	1	1	1	1	1	1					
11	870-0053	Nut, Hex (#10-32)*	2	2	2	2	2	2					
12	332-1575	Strip, Terminal*	1	1	1	1	1	1					
13	332-0785	Post, Binding - Red*	1	1	1	1	1	1					
14	332-0784	Post, Binding - Black*	1	1	1	1	1	1					
15	815-0333	Screw, Machine - Round Head (#10 x 1/2")*	2	2	2	2	2	2					
16	332-0942	Tie, Cable £	1	1	1	1	1	1					
17	870-0053	Nut, Hex (#10-32) £	2	2	2	2	2	2					
18	853-0008	Washer, Lock - ET £	2	2	2	2	2	2					
19	191-1074	Bracket, Mounting £	1	1	1	1	1	1					
20	336-2269	Lead Assembly (Includes Terminal) £	1	1	1	1	1	1					
21	332-1497	Terminal, Lug - Faston £	2	2	2	2	2	2					
22	332-0556	Connector, Splice - Faston	1	1	1	1	1	1					
23	305-0537	Cable Assembly (Includes Parts Marked †)	1	1	1	1	1	1					
24	332-0942	Tie, Cable †	2	2	2	2	2	2					
25	323-0888	Plug, Banana †	1	1	1	1	1	1					
26	323-0889	Plug, Banana †	1	1	1	1	1	1					
27	332-1446	Clip, Battery †	2	2	2	2	2	2					
28	332-1448	Insulator, Sleeve - Black †	1	1	1	1	1	1					
29	332-1447	Insulator, Sleeve - Red †	1	1	1	1	1	1					
30	322-0159	Light Package, Running	1	1	1	1	1	1					
£ - Included in 305-0540 Charger Package.													
* - Included in 305-0527 Battery Charger.													
Δ - Included in 358-0059 Diode and Fuse Holder Assembly.													
† - Included in 305-0537 Cable Assembly.													

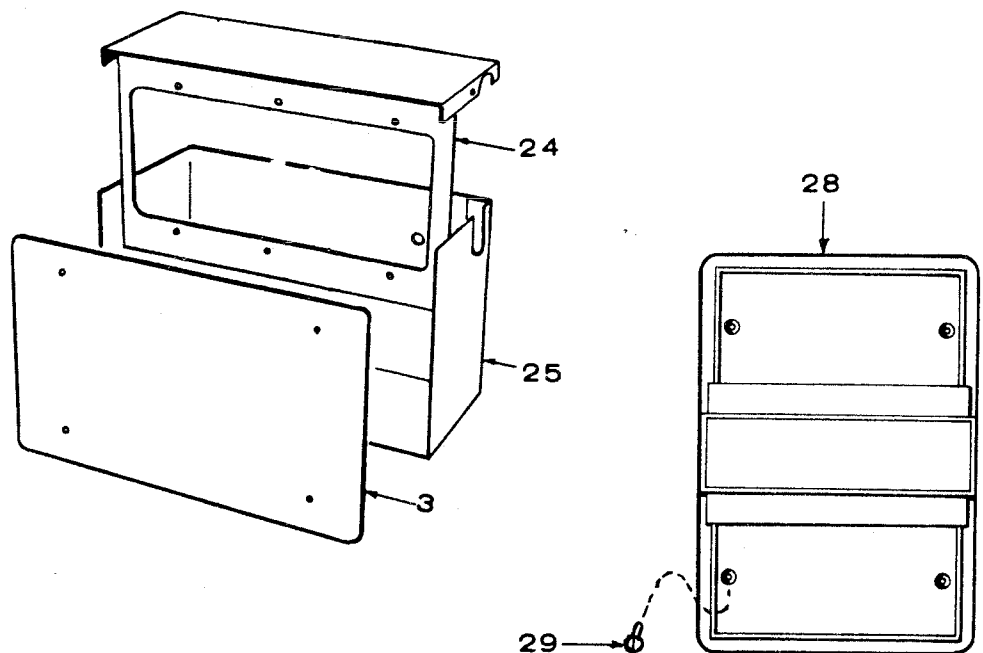
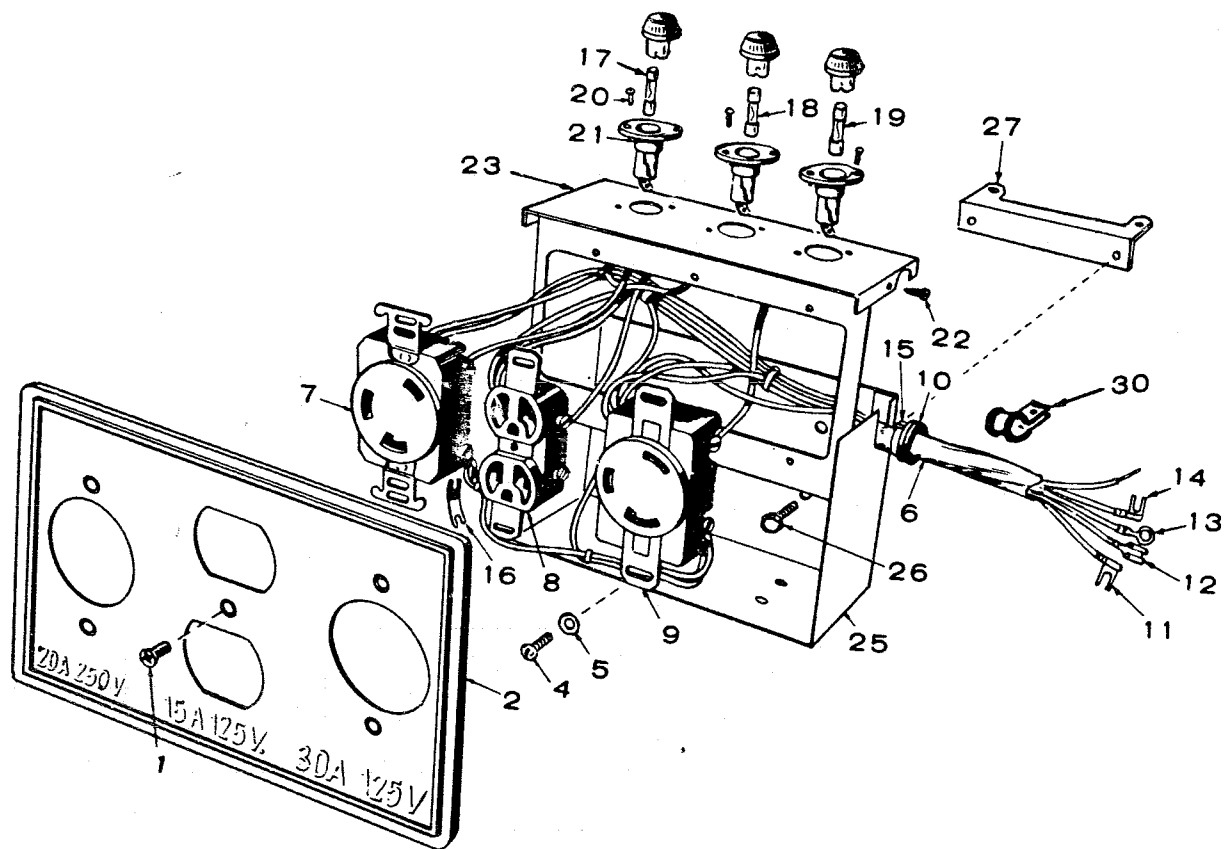
IDLE-MATIC CONTROL (OPTIONAL)



IDLE-MATIC CONTROL (OPTIONAL)

REF NO.	PART NUMBER	PART DESCRIPTION	QUANTITY USED										
			A	B	C	D	E	F	G	H	J	K	
1	150-1491	Sensor Assembly, Speed Control (Includes Parts Marked *)		1	1	1	1	1					
2	301-3798	Plate, Base - Sensor Assembly*		1	1	1	1	1					
3	301-3791	Cover, Speed Sensor Assembly*		1	1	1	1	1					
4	300-1185	Printed Circuit Board - Sensor Assembly (See Separate Group for Components)*		1	1	1	1	1					
5	812-0065	Screw, Machine - Round Head (#6-32 x 5/8")*		4	4	4	4	4					
6	850-0020	Washer, Lock - Spring (#6)*		4	4	4	4	4					
7	526-0003	Washer, Flat (11/64" ID x 3/8" OD x 1/32" Thk)		2	2	2	2	2					
8	307-1405	Bracket, Solenoid Mounting		1	1								
8A	307-1396	Bracket, Solenoid Mounting				1							
9	307-1402	Bracket, Solenoid Mounting					1	1					
10	307-1391	Solenoid		1	1	1	1	1					
11	307-1404	Link, Solenoid to Carburetor		1	1								
12	307-1395	Link, Solenoid to Carburetor				1							
13	307-1401	Link, Solenoid to Carburetor					1	1					
14	HARNESS, WIRING												
	338-0944	Spec A and B		1	1	1	1	1					
	338-0904	Begin Spec C		1	1	1	1	1					
15	332-0820	Tie, Cable		2	2	2	2	2					
16	307-1406	Bracket, Sensor Mounting		1	1	1	1	1					
17	301-3870	Bracket, Plug Retainer		1	1	1	1	1					
18	800-0004	Screw, Cap - Hex Head (1/4-20 x 5/8")		2	2	2	2	2					
19	850-0040	Washer, Lock - Spring (1/4")		2	2	2	2	2					
20	862-0001	Nut, Hex (1/4-20)		2	2	2	2	2					
21	508-0190	Bushing, Strain Relief - Begin Spec C		1	1	1	1	1					
22	150-1488	Arm, Governor					1	1					
* - Parts Included in 150-1491 Sensor Assembly.													

**RECEPTACLE BOX ASSEMBLY (REMOTE)
- OPTIONAL - SPEC A THRU B**



**RECEPTACLE BOX ASSEMBLY (REMOTE)
- OPTIONAL - SPEC A THRU B**

REF NO.	PART NUMBER	PART DESCRIPTION	QUANTITY USED										
			A	B	C	D	E	F	G	H	J	K	
		BOX ASSEMBLY, RECEPTACLE (60 Hertz Sets)											
	300-1094	With Fuses (Includes Parts Marked £)				1	1	1					
	300-1095	Without Fuses (Includes Parts Marked *)				1	1	1					
1	815-0396	Screw, Fillister Head (#6-32 x 1-1/2") £*				5	5	5					
1	815-0396	Screw, Fillister Head (#6-32 x 1-1/2") - 50 Hertz Sets				4	4	4					
2	301-3676	Cover, Receptacle £*				1	1	1					
3	301-3743	Cover, Box - 50 Hertz Sets				1	1	1					
4	808-0022	Screw, Machine - Round Head Tapping (#8 x 3/8") £*				6	6	6					
5	526-0048	Washer, Flat - Brass (.172 ID x 3/8 OD x 1/32" Thk) £*				6	6	6					
6	HARNESS, WIRING												
	338-0734	60 Hertz Sets with Fuses (Includes Parts Marked •) £				1	1	1					
	338-0733	60 Hertz Sets Without Fuses (Includes Parts Marked Δ)*				1	1	1					
	338-0767	50 Hertz Sets (Includes Parts Marked #)				1	1	1					
7	323-0873	Receptacle, Twistlock (20 Amp, 240 Volt) •Δ				1	1	1					
8	323-0872	Receptacle, Twistlock (30 Amp, 120 Volt) •Δ				1	1	1					
9	323-0383	Receptacle, Duplex (15 Amp, 120 Volt) •Δ				1	1	1					
10	508-0071	Grommet, Rubber •Δ#				1	1	1					
11	332-1563	Terminal, Flag (Right) •Δ				4	4	4					
12	332-1497	Terminal, Faston •Δ#				4	4	4					
13	332-0147	Terminal, Ring •Δ				1	1	1					
13	332-0325	Terminal, Ring#				1	1	1					
14	332-1562	Terminal, Flag - Left •Δ				2	2	2					
15	332-0941	Tie, Cable (7-1/4") •Δ#				1	1	1					
15	332-0942	Tie, Cable (3-1/2") •Δ				4	4	4					
16	323-0869	Strap, Ground •Δ				1	1	1					
17	321-0200	Fuse, Cartridge (20 Amp) £				1	1	1					
18	321-0199	Fuse, Cartridge (15 Amp) £				1	1	1					
19	321-0201	Fuse, Cartridge (30 Amp) £				1	1	1					
20	808-0022	Screw, Machine - Round Head Tapping (#8 x 3/8") £				6	6	6					
21	321-0198	Holder, Fuse £				3	3	3					
22	815-0395	Screw, Machine - Pan Head (#6 x 3/8") £				3	3	3					
23	301-3648	Bracket, Receptacle (Sets With Fuses) £				1	1	1					
24	301-3672	Bracket, Receptacle (50 and 60 Hertz Sets Without Fuses)*				1	1	1					
25	301-3649	Box, Receptacle (50 and 60 Hertz Sets) £*				1	1	1					
26	821-0009	Screw, Cap - Hex Head (1/4-20 x 3/8") (50 and 60 Hertz Sets) £*				4	4	4					
27	323-0876	Bracket, Box Mounting (50 and 60 Hertz Sets) £*				2	2	2					
28	232-2433	Cover, End Bell (50 and 60 Hertz Sets) £*				1	1	1					

**RECEPTACLE BOX ASSEMBLY (REMOTE)
- OPTIONAL - SPEC A THRU B**

REF NO.	PART NUMBER	PART DESCRIPTION	QUANTITY USED									
			A	B	C	D	E	F	G	H	J	K
29	815-0397	Screw, Flat Head Cross Recessed (#6 x 1/2") (50 and 60 Hertz Sets) £*				4	4	4				
30	332-1554	Clamp, Harness (50 and 60 Hertz Sets) £*				1	1	1				
<p>£ - Parts Included in 300-1094 Receptacle Box Assembly. * - Parts Included in 300-1095 Receptacle Box Assembly. • - Parts Included in 338-0734 Wiring Harness Assembly. Δ - Parts Included in 338-0733 Wiring Harness Assembly. # - Parts Included in 338-0767 Wiring Harness Assembly.</p> <p>NOTE: 50 Hertz sets are equipped with outlet box, blank cover and wiring harness. Customer supplies receptacles as desired.</p>												

SERVICE KITS AND MISCELLANEOUS

REF NO.	PART NUMBER	PART DESCRIPTION	QUANTITY USED										
			A	B	C	D	E	F	G	H	J	K	
	525-0137 412-0004	Paint, Touch-up Enamel (Green) 16 oz. Cover, Canvas	1 1	1 1	1 1	1 1	1 1	1 1					

SPECIAL PARTS LISTS INDEX FOR FORM NO. 919-0306

MODEL	SPEC.	DATED	FICHE LOCATION
1.0TM-53BP	1A	09/01/79 ***	2 A1
1.0TM-53CP	1A	09/01/79 ***	2 A1
1.2TM-1F	1A	09/01/79 ***	2 A3
1.4TN-53BP	1A	09/01/79 ***	2 A3
1.6TP-53BP	1A	09/01/79 ***	2 A5
1.6TP-53CP	1A	09/01/79 ***	2 A5
1.7TN-1F	1A	09/01/79 ***	2 A7
2.0TP-1F	1A	09/01/79 ***	2 A7
2.5TR-53BP	1A	09/01/79 ***	2 A9
2.5TR-53CP	1A	09/01/79 ***	2 A9
3.0TR-3P	1A	09/01/79 ***	2 A11
3.7TS-53BP	1A	09/01/79 ***	2 A11
3.7TS-53CP	1A	09/01/79 ***	2 A13
4.5TS-3P	1A	09/01/79 ***	2 A13
4.5TT-53BP	1A	09/01/79 ***	2 B1
4.5TT-53CP	1A	09/01/79 ***	2 B1
5.5TT-3P	1A	09/01/79 ***	2 B3
1.4TN-53BP	1C	09/01/79 ***	2 B3
1.4TN-53CP	1C	09/01/79 ***	2 B5
1.6TP-53BP	1C	09/01/79 ***	2 B5
1.6TP-53CP	1C	09/01/79 ***	2 B7
1.7TN-1F	1C	09/01/79 ***	2 B7
2.0TP-1F	1C	09/01/79 ***	2 B9
2.0TP-3P	1C	09/01/79 ***	2 B9
2.5TR-53BP	1C	09/01/79 ***	2 B11
2.5TR-53CP	1C	09/01/79 ***	2 B11
3.7TS-53BP	1C	09/01/79 ***	2 B13
3.7TS-53CP	1C	09/01/79 ***	2 B13
4.5TS-3P	1C	09/01/79 ***	2 C1
4.5TT-53BP	1C	09/01/79 ***	2 C1
4.5TT-53CP	1C	09/01/79 ***	2 C3
5.5TT-3P	1C	09/01/79 ***	2 C3
1.7TN-1F	1F	09/01/79 ***	2 C5
2.0TP-1F	1F	09/01/79 ***	2 C5
3.0TR-1F	1F	09/01/79 ***	2 C7
3.0TR-3P	1F	09/01/79 ***	2 C7
4.5TS-1F	1F	09/01/79 ***	2 C9
4.5TS-3P	1F	09/01/79 ***	2 C9
5.5TT-1F	1F	09/01/79 ***	2 C11
5.5TT-3P	1F	09/01/79 ***	2 C11
2.0TP-1P	8200A	09/01/79 ***	2 C13
3.0TR-3P	8200A	09/01/79 ***	2 C13
4.5TS-3P	8200A	09/01/79 ***	2 D1
5.5TT-3P	8200A	09/01/79 ***	2 D1
1.7TN-1F	8200C	09/01/79 ***	2 D3
2.0TP-1P	8200C	09/01/79 ***	2 D3
2.0TP-3P	8200C	09/01/79 ***	2 D5
3.0TR-3P	8200C	09/01/79 ***	2 D5
4.5TS-3P	8200C	09/01/79 ***	2 D7
5.5TT-3P	8200C	09/01/79 ***	2 D7
1.7TN-1F	8200F	09/01/79 ***	2 D9
2.0TP-1P	8200F	09/01/79 ***	2 D9
3.0TR-1F	8200F	09/01/79 ***	2 D11
4.5TS-1F	8200F	09/01/79 ***	2 D11

SPECIAL PARTS LISTS INDEX FOR FORM NO. 919-0306

MODEL	SPEC.	DATED	FICHE LOCATION
4.5TS-3P	8200F	09/01/79 ***	2 D13
5.5TT-1P	8200F	09/01/79 ***	2 D13
3.0TR-3P	13034A	09/01/79 ***	2 E1
1.7TN-1P	14000A	09/01/79 ***	2 E1
2.0TF-1P	14000A	09/01/79 ***	2 E3
3.0TR-3P	14000A	09/01/79 ***	2 E3
4.5TS-3P	14000A	09/01/79 ***	2 E5
5.5TT-3P	14000A	09/01/79 ***	2 E5
2.0TF-1P	14000C	09/01/79 ***	2 E7
2.5TR-53BP	14000C	09/01/79 ***	2 E7
3.0TR-3P	14000C	09/01/79 ***	2 E9
3.0TR-3P	14680A	09/01/79 ***	2 E9
4.5TS-3P	14696A	09/01/79 ***	2 E11
5.5TT-3P	14696A	09/01/79 ***	2 E11
3.0TR-3P	14697A	09/01/79 ***	2 E13
2.0TF-1P	14752C	09/01/79 ***	2 E13
3.0TR-3P	14753A	09/01/79 ***	2 F1
4.5TS-3P	14754A	09/01/79 ***	2 F1
5.5TT-3P	14754A	09/01/79 ***	2 F3
1.7TN-1P	14809A	09/01/79 ***	2 F3
3.0TR-3P	14810A	09/01/79 ***	2 F5
4.0TS-3P	14811A	09/01/79 ***	2 F5
5.0TT-3P	14811A	09/01/79 ***	2 F7
1.2TM-1P	15581A	09/01/79 ***	2 F7
1.7TN-1P	15581A	09/01/79 ***	2 F9
1.7TN-1P	15582A	09/01/79 ***	2 F9
3.0TR-3P	15582A	09/01/79 ***	2 F11
4.0TS-3P	15583A	09/01/79 ***	2 F11
3.0TR-3P	15714A	09/01/79 ***	2 F13
3.0TR-3P	15769C	09/01/79 ***	2 F13
3.0TR-1P	15769F	09/01/79 ***	2 G1
3.0TR-3P	15979A	09/01/79 ***	2 G1
4.5TS-3P	16021A	09/01/79 ***	2 G3
5.5TT-3P	16021A	09/01/79 ***	2 G3
3.0TR-3P	16036A	09/01/79 ***	2 G5
2.5TR-53BP	16302A	09/01/79 ***	2 G5
1.7TN-1P	16534A	09/01/79 ***	2 G7
3.0TR-3P	16535A	09/01/79 ***	2 G7
4.0TS-3P	16536A	09/01/79 ***	2 G9
5.0TT-3P	16536A	09/01/79 ***	2 G9
2.0TF-3P	16756C	09/01/79 ***	2 G11
3.0TR-3P	16756C	09/01/79 ***	2 G11
4.5TS-3P	16756C	09/01/79 ***	2 G13
5.5TT-3P	16756C	09/01/79 ***	2 G13
3.0TR-3P	16928C	09/01/79 ***	3 A1
4.5TS-3P	16928C	09/01/79 ***	3 A1
3.0TR-3P	17158C	09/01/79 ***	3 A3
4.5TS-3P	17159C	09/01/79 ***	3 A3
5.5TT-3P	17159C	09/01/79 ***	3 A5
1.4TN-53BP	17465C	09/01/79 ***	3 A5
2.5TR-53BP	17465C	09/01/79 ***	3 A7
5.5TT-3P	17592C	09/01/79 ***	3 A7
3.0TR-3P	17593C	09/01/79 ***	3 A9
4.5TS-3P	17593C	09/01/79 ***	3 A9

SPECIAL PARTS LISTS INDEX FOR FORM NO. 919-0306

MODEL	SPEC.	DATED	FICHE LOCATION
5.5TT-3P	17594C	09/01/79 ***	3 A11
3.0TR-3P	18152C	09/01/79 ***	3 A11
3.0TR-3P	18180F	09/01/79 ***	3 A13
4.5TS-3P	18180F	09/01/79 ***	3 A13
5.5TT-3P	18180F	09/01/79 ***	3 B1
4.5TS-3P	18381C	09/01/79 ***	3 B1
3.0TR-3P	18444F	09/01/79 ***	3 B3
4.5TS-3P	18444F	09/01/79 ***	3 B3
5.5TT-3P	18444F	09/01/79 ***	3 B5