

Onan *Coach Command*[™]

Parts Catalog

CCRVB



Printed in U.S.A.

900-0295
10-2003

MODEL IDENTIFICATION

To avoid errors or delay in filling your parts order, always give the MODEL, SPEC NO. and SERIAL NO. from the Onan nameplate.

For handy reference, insert your nameplate information in the spaces below.

MODEL AND SPEC NO.

SERIAL NO.

DIGITAL CONTROL SOFTWARE VERSION
AND DATE (IF APPLICABLE)

SAFETY PRECAUTIONS

The following symbols are used in Onan manuals to alert users to the potentially dangerous conditions relating to maintenance of equipment and replacement of parts. Please read and observe.



This symbol warns of immediate hazards which will result in severe personal injury or death.



This symbol refers to a hazard or unsafe practice which can result in severe personal injury or death.



This symbol refers to a hazard or unsafe practice which can result in severe personal injury or product or property damage.

PRODUCT SAFETY PRECAUTIONS



Service and repair of Onan equipment must be performed by trained, experienced personnel only. Improper service or repair may result in property damage, severe personal injury or death. Do not use this catalog as a guide to servicing your equipment. Read and follow the IMPORTANT SAFETY INSTRUCTIONS in the Service Manual appropriate for the equipment you are working on.

PPLYH-1

Introduction

This catalog applies to Onan Coach Command Model CCRVB. Parts are arranged in groups of related items and each illustrated part is identified by a reference number corresponding to the same reference number in the parts list. Parts illustrations are typical.

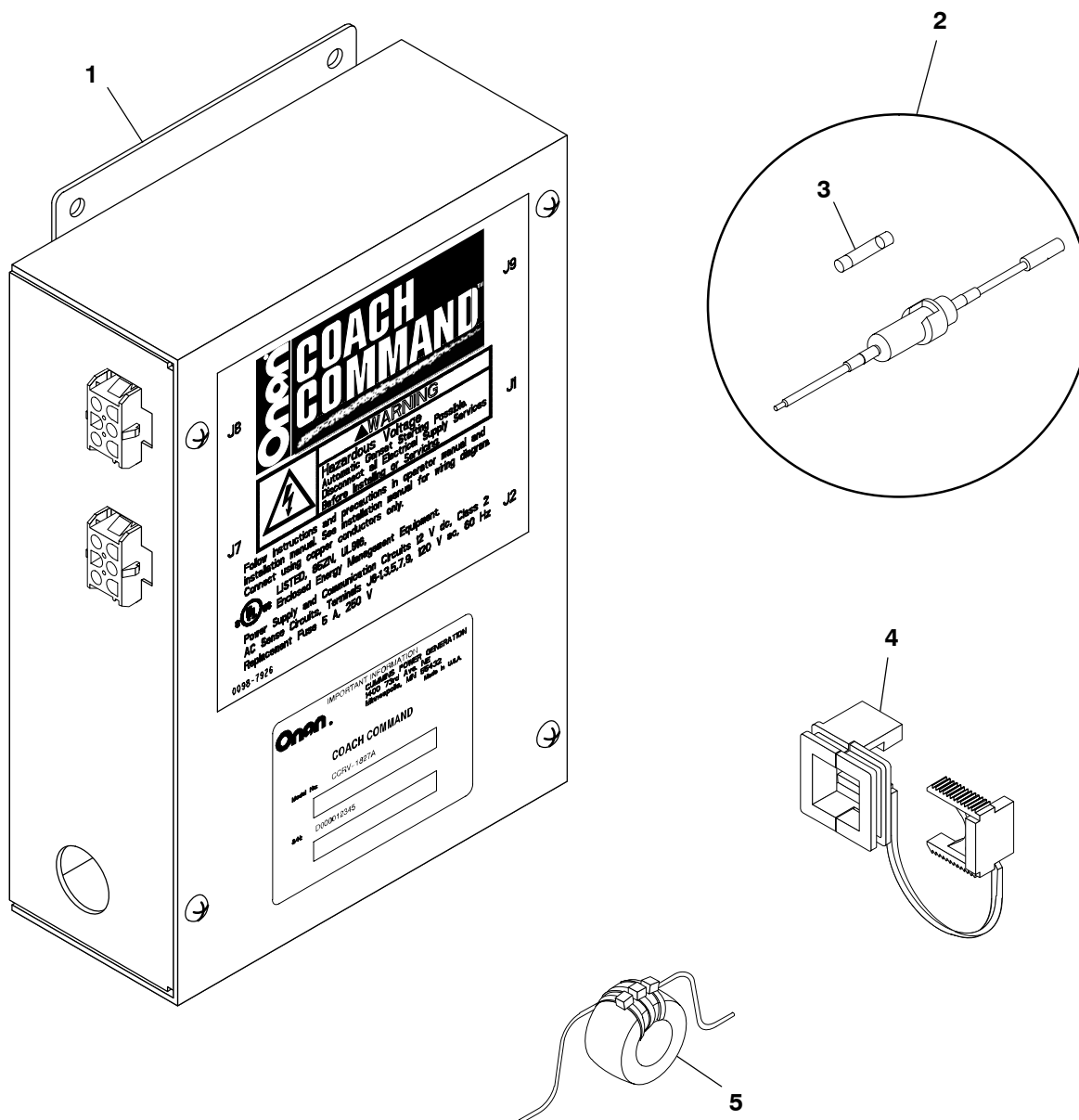
Abbreviations

Some of the following abbreviations may be used throughout this Parts Catalog:

| | | | |
|-----------------|--|-----------------|--|
| AC | Alternating Current | mm | Millimeter |
| Amp | Ampere | MOH | Mobile Off Highway |
| A/R | As Required | NFS | Not For Sale |
| AVR | Automatic Voltage Regulator | NPT | National Pipe Thread |
| AWG | American Wire Gauge | OD | Outside Diameter |
| DC | Direct Current | oz. | Ounce |
| Deg | Degree | PC | Printed Circuit |
| EFC | Electronic Fuel Control | Ph | Phase |
| EIT | External/Internal Tooth | PMG | Permanent Magnet Generator |
| EPROM | Erasable Programmable Read Only Memory | PT/CT | Potential Transformer/Current Transformer |
| ET | External Tooth | RFI | Radio Frequency Interference |
| GFI | Ground Fault Interrupter | RT | Right |
| ID | Inside Diameter | Spec | Specification |
| IEC | International Electrotechnical Commission | Thk | Thick |
| IT | Internal Tooth | UL | Underwriters Laboratories Inc. |
| kW | Kilowatt | UNC | Union National Coarse |
| LPG | Liquid Petroleum Gas | UNF | Union National Fine |
| LT | Left | VAC | Volts Alternating Current |
| M(meter number) | Meter | VDC | Volts Direct Current |
| | | W/(ET, IT, EIT) | With |

Coach Command is a trademark of Onan Corporation.

Transfer Switch Node

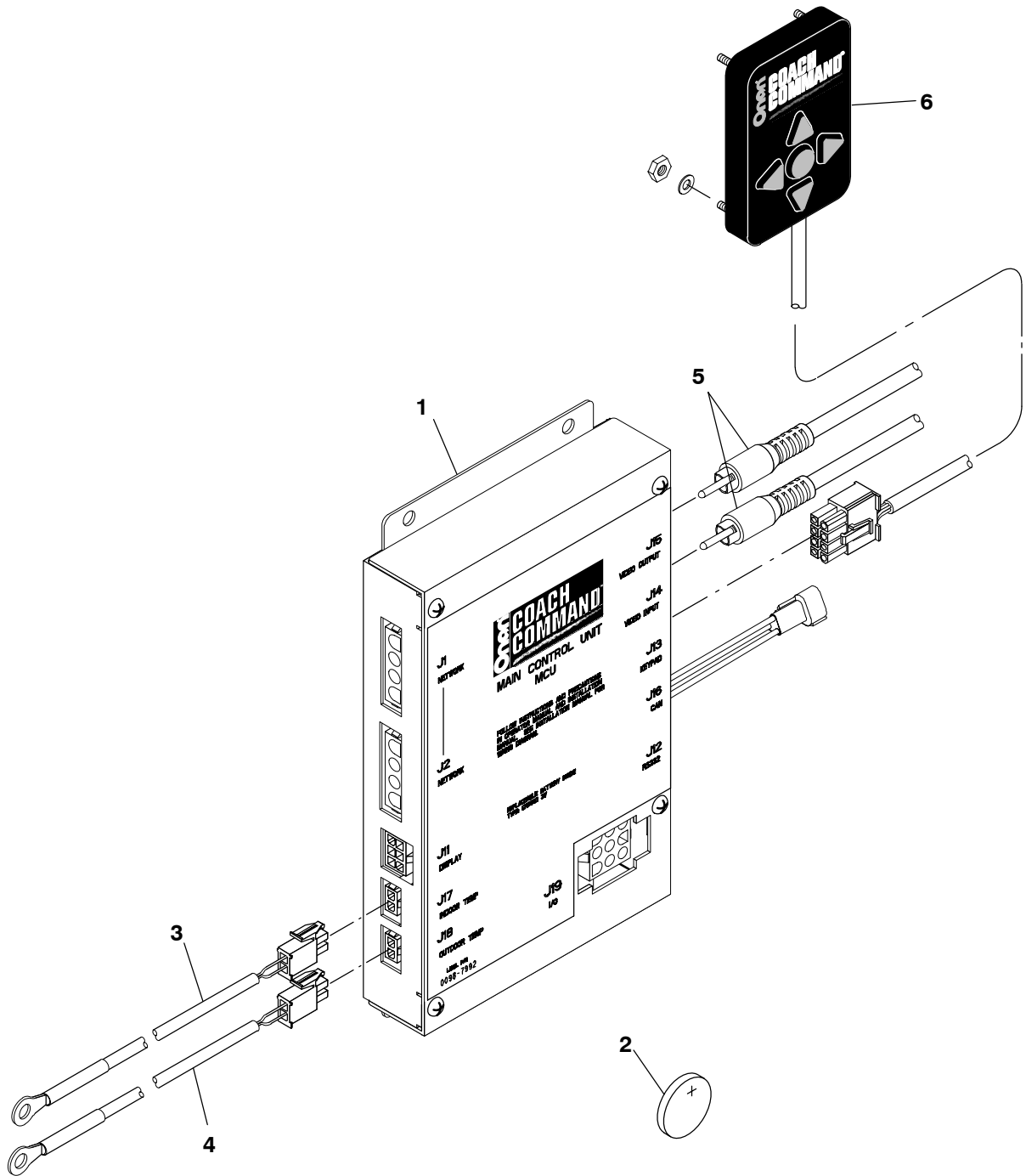


| REF NO. | PART NO. | QTY USED | PART DESCRIPTION |
|---------|-------------|----------|--|
| 1 | 327-1284 | 1 | Node Assembly, Transfer Switch |
| 2 | 321-0375 | 5 | Holder, Fuse (Includes a 5 Amp Fuse - Ref No. 3) |
| 3 | 321-0372-03 | 1 | Fuse, 5 Amp, 250 Volt |
| 4 | 508-1175 | 1 | Bushing, Strain Relief |

| REF NO. | PART NO. | QTY USED | PART DESCRIPTION |
|---------|----------|----------|----------------------|
| 5 | | | Transformer, Current |
| | 315-0861 | 2 | Configuration 0* |
| | 315-0861 | 4 | Configuration 1* |
| | 315-0861 | 6 | Configuration 2* |
| | 315-0861 | 4 | Configuration 3* |

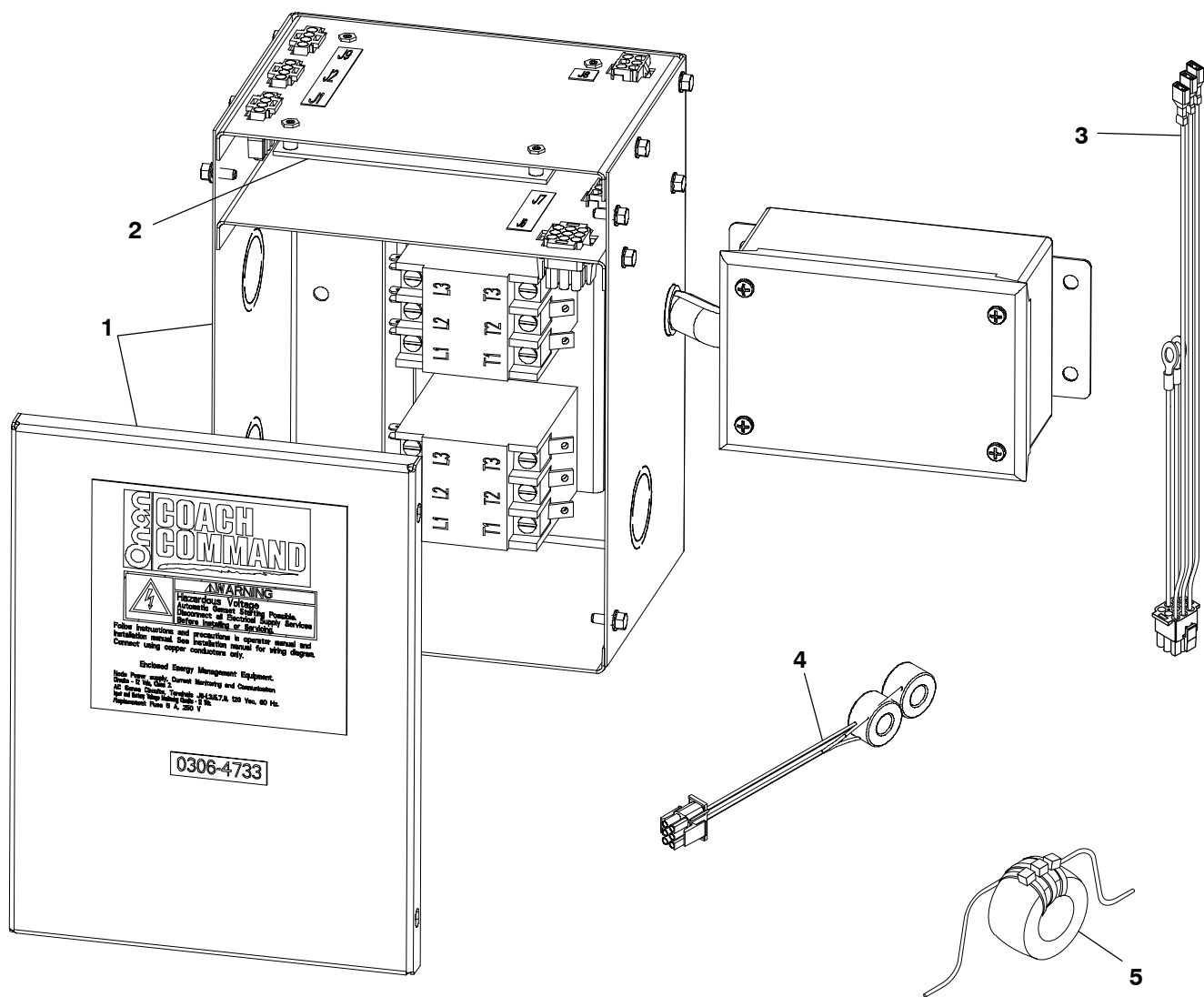
* The Configuration Number is shown on the first Electrical Setup menu (OEM Setup → Setup). For more information, see the System Configuration section of the CCRV/CCRVB Installation Manual.

Main Control Unit (MCU)



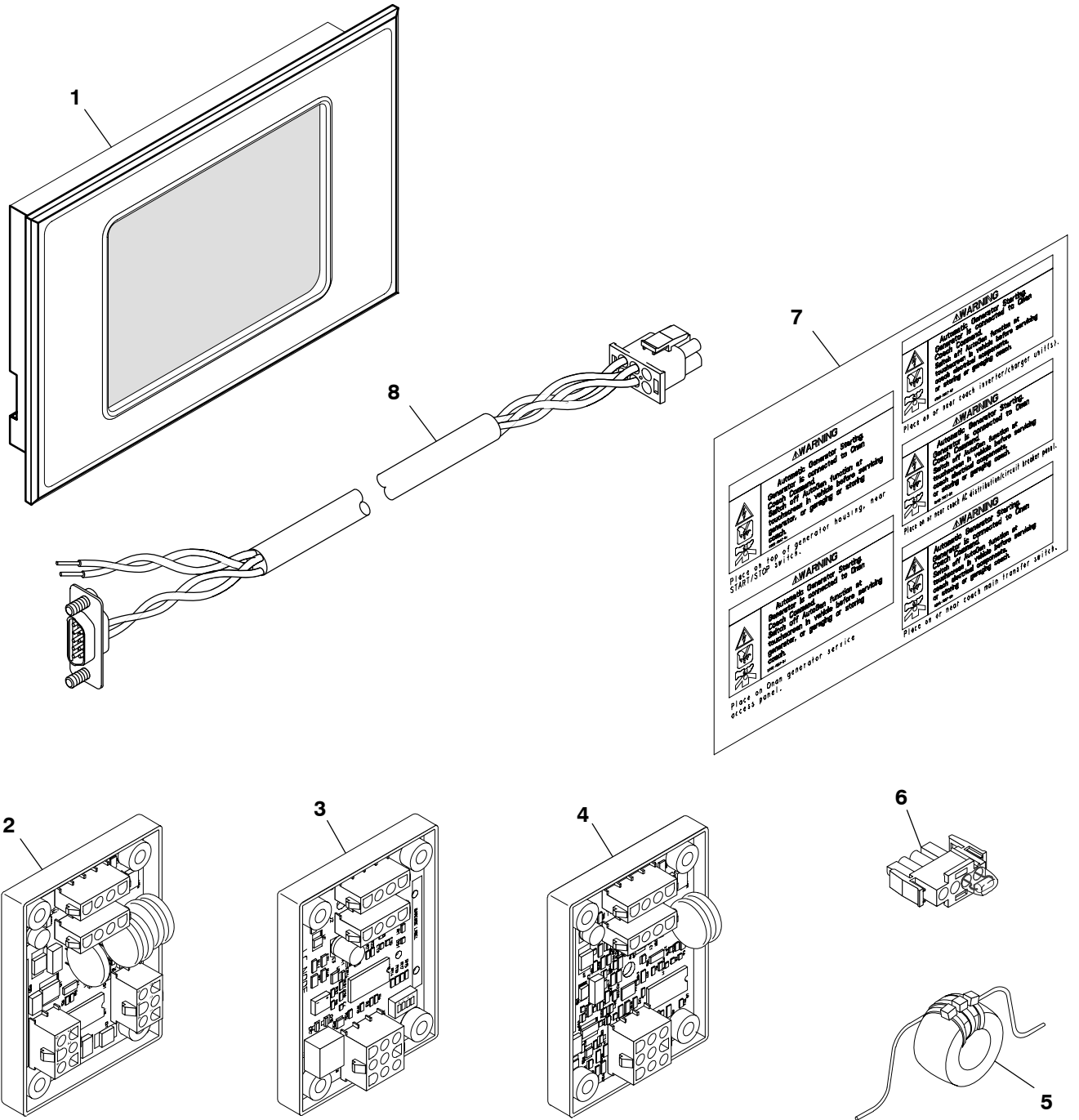
| REF NO. | PART NO. | QTY USED | PART DESCRIPTION | REF NO. | PART NO. | QTY USED | PART DESCRIPTION |
|---------|----------|----------|---|---------|----------|----------|--|
| 1 | 327-1260 | 1 | Node Assembly, MCU (Includes Label and Lithium Battery [Ref No. 2]) | 5 | 338-4158 | 2 | Cable, Video |
| 2 | 416-1116 | 1 | Battery, 3 Volt – Lithium | 6 | 541-0865 | 1 | Keypad Switch Kit (Includes a Control Pad, a Harness Assembly, Four Flat Washers, and Four Hex Nuts) |
| 3 | 193-0510 | 1 | Sensor, Temperature – Outdoor | | | | |
| 4 | 193-0511 | 1 | Sensor, Temperature – Indoor | | | | |

Combined Transfer Switch



| REF NO. | PART NO. | QTY USED | PART DESCRIPTION | REF NO. | PART NO. | QTY USED | PART DESCRIPTION |
|---------|----------|----------|--|----------|-------------|----------|--|
| 1 | | | Transfer Switch Assembly 120/240 VAC (Includes Parts Marked *) | 306-4735 | | 1 | 50 Amps, 65 Amp Neutral |
| | 306-4733 | 1 | 50 Amps, 65 Amp Neutral with Mechanical Interlock and Surge Protection | 306-4736 | | 1 | 75 Amps, 90 Amp Neutral with Mechanical Interlock |
| | 306-4734 | 1 | 50 Amps, 65 Amp Neutral with Mechanical Interlock | 2 | 327-1283-01 | 1 | * Board, Printed Circuit – Transfer Switch Node |
| | | | | 3 | 338-4247 | 1 | * Harness, AC |
| | | | | 4 | 338-4248 | 1 | * Harness, Sensor |
| | | | | 5 | 315-0861 | 2 | Transformer, Current |

Miscellaneous Coach Command Parts

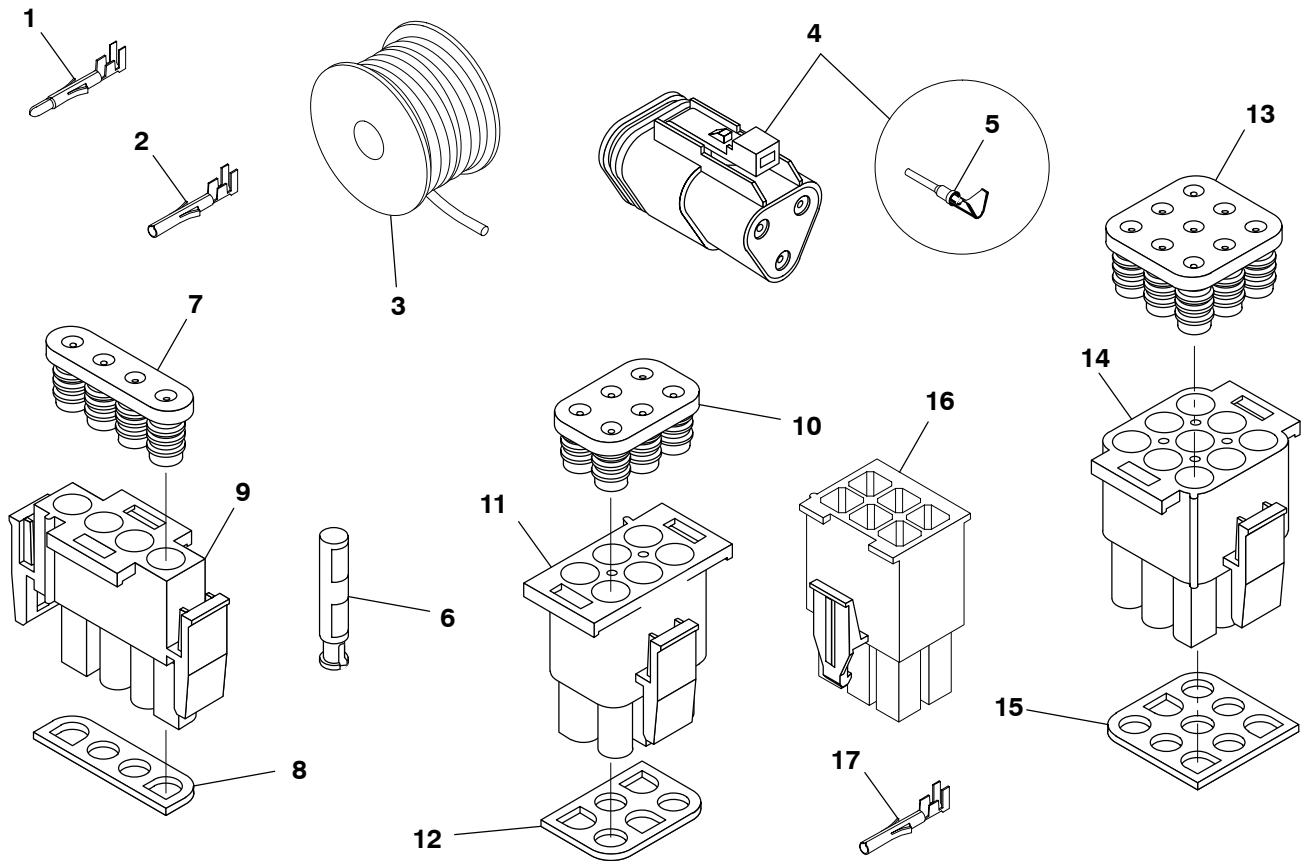


| REF NO. | PART NO. | QTY USED | PART DESCRIPTION |
|---------|-------------|----------|---------------------------|
| 1 | 326-5657-01 | 1 | Display, Touch Screen |
| 2 | 300-5488 | 1 | Node, Generator Interface |
| 3 | 327-1288 | A/R* | Node, Load Control |
| 4 | 300-5380 | 1 | Node, Tank Level |
| 5 | 315-0861 | A/R* | Transformer, Current |
| 6 | 323-1911 | 2 | Plug, Terminating |

| REF NO. | PART NO. | QTY USED | PART DESCRIPTION |
|---------|----------|----------|---|
| 7 | 098-7867 | 1 | Labels, Warning – Automatic Generator Start |
| 8 | 338-4075 | 1 | Harness, Touch Screen |

* Each Controlled Load Requires 1 Load Control Node and 1 Current Transformer.

Original Equipment Manufacturer Parts



| REF NO. | PART NO. | QTY USED | PART DESCRIPTION | REF NO. | PART NO. | QTY USED | PART DESCRIPTION |
|---------|----------|----------|---|---------|----------|----------|--|
| 1 | 323-1930 | 16 | Contact, Pin (Gold) | 10 | 323-1908 | A/R | Seal, Wire – 6-Circuit Connector |
| | 323-1930 | 17* | MCU | 11 | 323-1932 | 1 | Connector, 6-Circuit MCU |
| | 323-1930 | 20 | Load Control Node | | 323-1932 | 2 | Generator Interface Node |
| | 323-1930 | 17 | Generator Interface Node | | 323-1932 | 2 | Transfer Switch Node |
| | 323-1930 | 23 | Tank Level Node | 12 | 323-1907 | A/R | Seal, Interface – 6-Circuit Connector |
| 2 | | | Transfer Switch Node – J1, J2, J6, and J8 Circuits | 13 | 323-1906 | A/R | Seal, Wire – 9-Circuit Connector |
| | 323-1931 | 6 | Contact, Socket (Gold) – Transfer Switch Node | 14 | 323-1201 | 1* | Seal, Interface – 9-Circuit Connector |
| | 323-1931 | 4 | J7 Circuit | | 323-1201 | 1 | Connector, 9-Circuit |
| 3 | 334-1350 | A/R | J9 Circuit | | 323-1201 | 1 | Load Control Node |
| 4 | 323-1493 | 1 | Cable, Network – 1000 Feet | | 323-1201 | 1 | Tank Level Node |
| | | | Connector, 3-Circuit – Engine Interface SAE J1939 (CAN) Node (Includes Socket Terminals [Ref No.5]) | | 323-1201 | 1 | Transfer Switch Node |
| 5 | 323-1492 | 3 | Terminal, Socket | 15 | 323-1905 | A/R | MCU |
| 6 | 323-1912 | A/R | Plug, Sealing | 16 | 323-2010 | 1 | Seal, Interface – 9-Circuit Connector |
| 7 | 323-1910 | A/R | Seal, Wire – 4-Circuit Connector | 17 | 323-2063 | 4 | Connector, 6-Circuit (MCU J11) |
| 8 | 323-1909 | A/R | Seal, Interface – 4-Circuit Connector | | | | Contact, Socket (Gold) (Used with 6-Circuit Connector – Ref. No. 16) |
| 9 | | | Connector, 4-Circuit | | | | |
| | 323-1292 | 2 | Master Node | | | | |
| | 323-1292 | 2 | Generator Interface Node | | | | |
| | 323-1292 | 2* | Load Control Node | | | | |
| | 323-1292 | 2 | Tank Level Node | | | | |
| | 323-1292 | 3 | Transfer Switch Node | | | | |

* The quantity listed is for each Load Control Node

Numerical Index

| <u>Part No.</u> | <u>Page</u> | <u>Part No.</u> | <u>Page</u> | <u>Part No.</u> | <u>Page</u> | <u>Part No.</u> | <u>Page</u> |
|-------------------|-------------|-----------------|-------------|-----------------|-------------|-----------------|-------------|
| 098-7867, 5 | | 321-0375, 2 | | 323-1911, 5 | | 327-1284, 2 | |
| 193-0510, 3 | | 323-1201, 6 | | 323-1912, 6 | | 327-1288, 5 | |
| 193-0511, 3 | | 323-1292, 6 | | 323-1930, 6 | | 334-1350, 6 | |
| 300-5380, 5 | | 323-1492, 6 | | 323-1931, 6 | | 338-4075, 5 | |
| 300-5488, 5 | | 323-1493, 6 | | 323-1932, 6 | | 338-4158, 3 | |
| 306-4733, 4 | | 323-1905, 6 | | 323-2010, 6 | | 338-4247, 4 | |
| 306-4734, 4 | | 323-1906, 6 | | 323-2063, 6 | | 338-4248, 4 | |
| 306-4735, 4 | | 323-1907, 6 | | 326-5657-01, 5 | | 416-1116, 3 | |
| 306-4736, 4 | | 323-1908, 6 | | 327-1260, 3 | | 508-1175, 2 | |
| 315-0861, 2, 4, 5 | | 323-1909, 6 | | 327-1283-01, 4 | | 541-0865, 3 | |
| 321-0372-03, 2 | | 323-1910, 6 | | | | | |

Onan

Cummins Power Generation
1400 73rd Avenue N.E.
Minneapolis, MN 55432
763-574-5000
Fax: 763-528-7229

Cummins and Onan are registered trademarks of Cummins Inc.



Redistribution or publication of this document
by any means, is strictly prohibited.