

# PowerCommand iWatch™ 100 Quick Reference Card

## Internet Monitoring

### GETTING STARTED

#### Install the i.LON 100 Software

1. Insert the i.LON 100 software installation CD into your computer. If the installation program fails to start, navigate to your CD-ROM drive and start the Setup Wizard.
2. Follow the instructions in the Setup Wizard (see note on back under "Installation of i.LON100e3 Software").

#### Connect the i.LON100 hardware directly to your PC using an Ethernet Cable

1. If your computer is not on the 192.168.1.x subnet, open a Windows® command prompt (Start → Run). Type "command" and click on the **OK** button. Type the following command verbatim:  
route add 192.168.1.0 mask 255.255.255.0 %COMPUTERNAME%

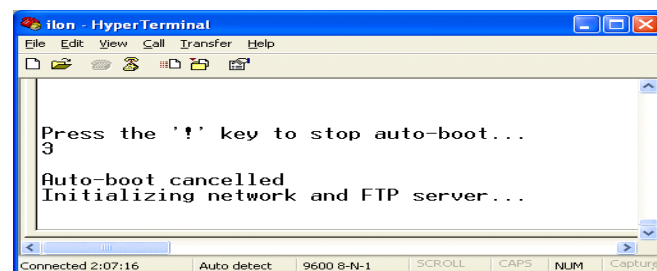
#### Install the PowerCommand iWatch 100 Software

##### I. Connecting

1. Insert the PowerCommand iWatch 100 CD and install the necessary format files, stencils, and firmware from the PowerCommand iWatch100.zip file.
2. Connect the PC COM port to the i.LON 100 Console port DB9 female-to-female null modem cable.
3. Open Start → All Programs → Accessories → Communications → Hyper Terminal.
4. Create a new connection, type in your network name, and select the COM Port icon. Click on the **OK** button and enter 9600, 8, N, 1, and None port settings.

##### II. Formatting

1. Hit Enter to get the Command Prompt "iLON100>"
2. Type the command "Reboot" followed by "y".
3. Interrupt the reboot process by pressing "!" when prompted.



4. This will put the program into a [Bootrom] state. Type in the command "Format" and answer "y".

##### III. Downloading

1. Open Internet Explorer and enter the following URL:

<ftp://192.168.1.222>

**NOTE:** if you cannot connect to the network, refer to Appendix A (Troubleshooting the Network Connection) of the PowerCommand iWatch 100 Operator's Manual (900-0539).

2. Enter the username (ilon) and the password (ilon).
3. Copy all of the files from the "iWatch 100 v1 image" directory on the CD to the FTP site. This will take a few minutes.
4. Use the console (Hyper Terminal) and issue a "Reboot" command followed by a "y".
5. After the reboot cycle is complete, close the Hyper Terminal connection.

##### IV. Configuring the PowerCommand iWatch 100 LAN Settings

1. Open Internet Explorer and enter the following URL:

<http://192.168.1.222>

2. Enter the username (ilon) and the password (ilon).
3. Place the cursor over **Setup** and select **TCP/IP** from the drop-down list.

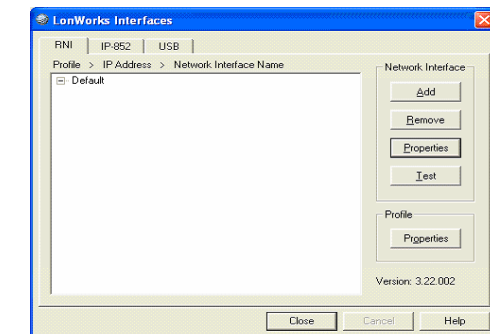
TCP/IP Property	Value
Ethernet MAC address	00-00-71-00-96-78
<input type="radio"/> Automatically obtain IP address *	
<input checked="" type="radio"/> Manually configure IP settings *	
LAN IP address *	192 . 168 . 1 . 222
Subnet mask *	255 . 255 . 255 . 0
Default gateway *	192 . 168 . 1 . 222
Default DNS server	<input type="checkbox"/> Obtain automatically *
	0 . 0 . 0 . 0
Backup DNS server	0 . 0 . 0 . 0

\* Reboot required if changed

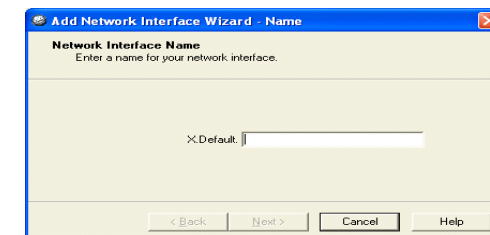
4. Enter your TCP/IP parameters and click on **Submit**.
5. Reboot your PowerCommand iWatch 100 from either the Hyper Terminal or the Reboot Web Page, for the settings to take effect.

### USING THE I.LON 100 AS A REMOTE NETWORK INTERFACE

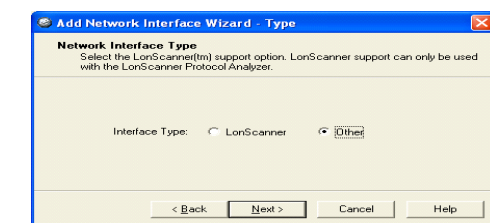
1. Open the Windows Control Panel and double click **LonWorks® Interfaces**. Select the **RNI** tab.



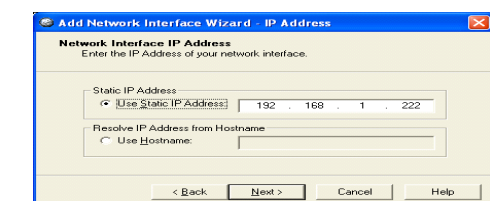
2. Select the **Default** profile. Click on **Add**, and enter a name for the network interface.



3. Click on **Next**, and select **Other** as the network interface type.



4. Click on **Next**, and enter the i.LON 100 server's IP address or hostname.



5. Click on **Finish** to return to the RNI tab, and click on **Close** to exit the application.

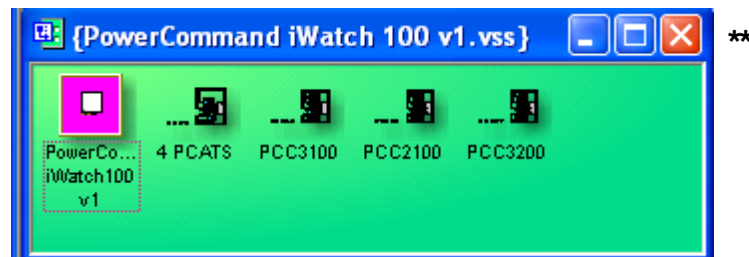
# PowerCommand iWatch™ 100 Quick Reference Card

## Internet Monitoring

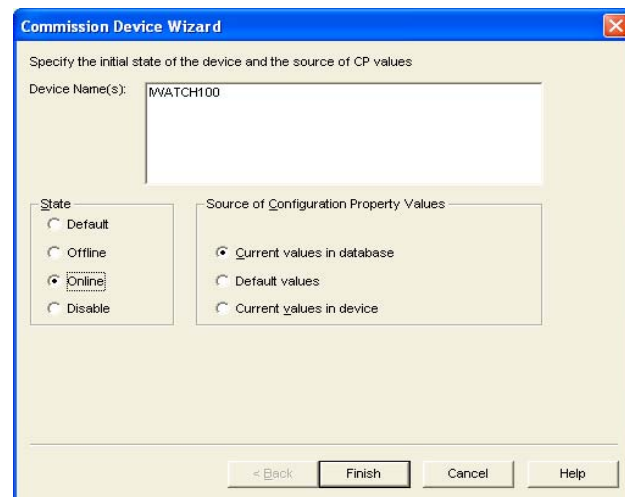
### CREATING THE NETWORK

#### Using the Stencils

1. Start a new database in LonMaker for Windows.
2. Select your i.LON as the Network Interface.
3. Register the Echelon i.LON 100 Configuration Plug-In.
4. From the toolbar, select File → Open Stencils. Click on the PowerCommand iWatch 100 v1 Stencil.



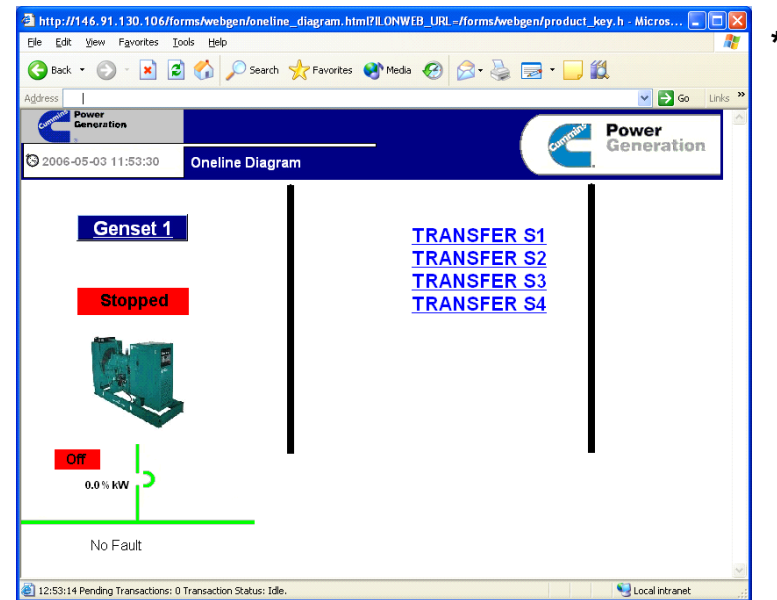
5. Drag and drop the specific stencil you will be using.
6. Commission the genset and transfer switches as needed.
7. Commission the PowerCommand iWatch 100.



#### Using the PowerCommand iWatch 100 Webpages

1. Open Internet Explorer.
2. Type in the link:  
[http://xxx.xxx.xxx.xxx/forms/webgen/Online\\_Diagram.html](http://xxx.xxx.xxx.xxx/forms/webgen/Online_Diagram.html)

### POWERCOMMAND IWATCH 100 CUSTOM WEBPAGES



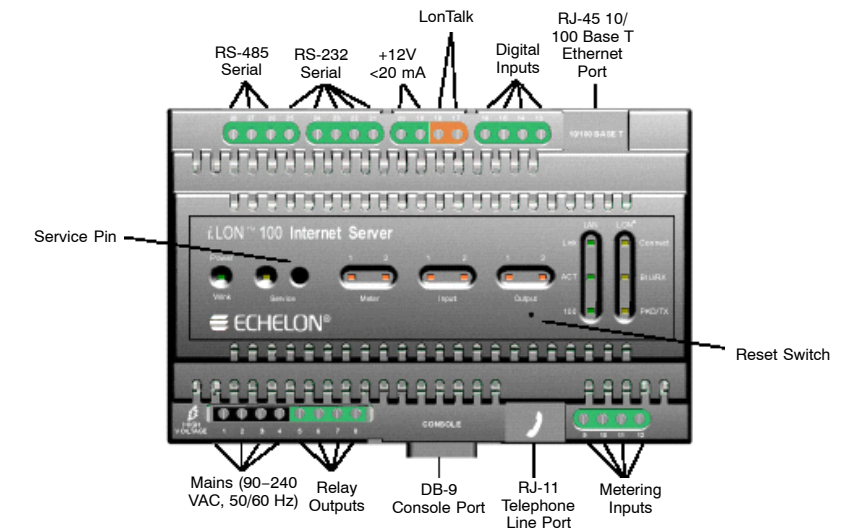
**NOTE:** If you get a message that your PowerCommand iWatch 100 Product Key is not correct and the web page is not opening, contact your distributor.

### INSTALLATION OF i.LON100e3 SOFTWARE



**NOTE:** DO NOT install Echelon LonMaker 3.1, Update 2 (LNS Turbo). This feature is NOT recommended or supported by Cummins, Inc.

### ADDITIONAL INFORMATION



#### Additional Required Hardware

- DB9 female-to-female null modem cable
- Ethernet cord with RJ-45 connectors
- Power cord, 120–240 VAC input.
- ModBus communications cable (P/N 338–4590) to 1301 control

**NOTE:** Cummins Employees: PowerSwept PCs may require admin rights for installation of the Echelon i.LON 100 software.

**NOTE:** FIRST TIME INSTALLATIONS REQUIRE THE USE OF THE POWERCOMMAND IWATCH 100 OPERATOR'S MANUAL (900–0539 for PCC2100, PCC3100, and PCC3200 genset controls, 900–0545 for PCC1301 genset controls).

**NOTE:** Software images that have \*\* next to them are menus used with the PCC2100, PCC3100, and PCC3200 LonWorks solution. The menus used for the PCC1301 ModBus iWatch solution are different from those shown in this document.

PowerCommand iWatch is a trademark of Cummins, Inc. PowerCommand and Cummins are registered trademarks of Cummins, Inc. Windows is a registered trademark of Microsoft Corporation. LonMaker and i.LON are trademarks of Echelon Corporation.

Excerpts of this document was recreated from Echelon's Quick Start Guide (PN 078-0314-01A) and i.LON100 e2 Internet Server User's Guide: Installing, Connecting, and Configuring the i.LON 100.