

PARTS MANUAL

COMMERCIAL GENERATOR

PX4800 & PX4800e



Cummins **Onan**



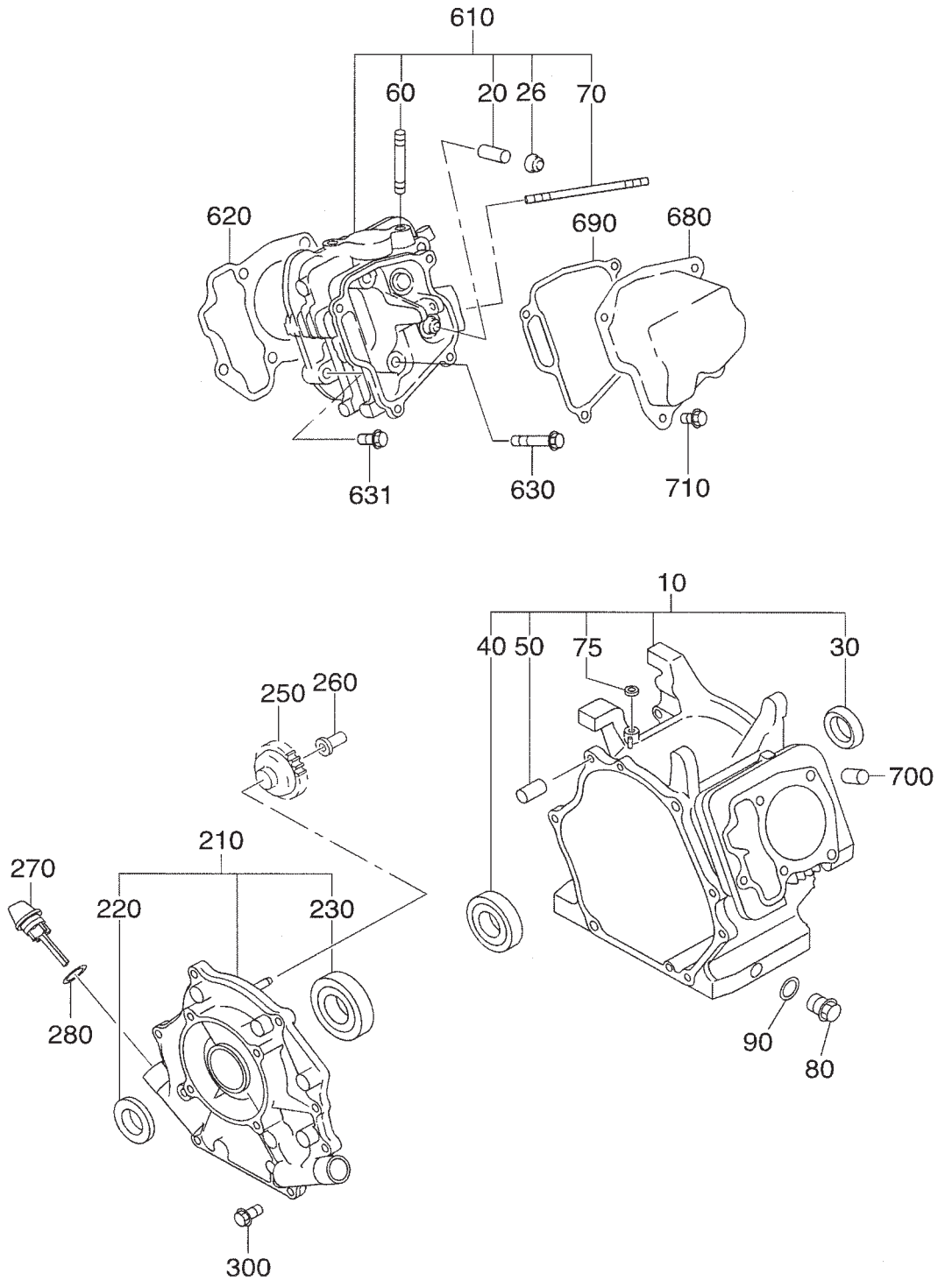
GROUP INDEX

Group Name	Page
CRANKCASE	6
CRANKSHAFT, PISTON	8
INTAKE, EXHAUST	10
GOVERNOR, OPERATION.....	12
COOLING, STARTING	14
ELECTRIC DEVICE	16
ENGINE.....	18
GENERATOR	20
BASE, FRAME	22
CONTROL.....	26
COVER.....	28
FUEL TANK	30
ACCESSORY GROUP	32

INDEX OF DESCRIPTION SYMBOLS			
SYMBOL	DESCRIPTION	SYMBOL	DESCRIPTION
AY	ASSEMBLY	P=	PITCH (in mm)
CP.....	COMPLETE	P.T.O. (PTO)	POWER TAKE OFF
EX.....	EXPORT (from Japan)	REF.....	REFERENCE
FIG.....	FIGURE	R.H. (RH).....	RIGHT HAND SIDE
FR.....	FRONT	RR.....	REAR
"	INCH	STD.	STANDARD
INCL.	INCLUDE	SW.....	SWITCH
~L.....	LITER	T=	THICKNESS (in mm)
L=	LENGTH (in. mm)	UN	UNIT
L.H. (LH).....	LEFT HAND SIDE	U.S.....	UNDER SIZE
MECH.....	MECHANICAL	~V	VOLTAGE
NO (NON).....	NONE	~W	WATT
OPT.....	OPTIONAL	W/	WITH
O.S.	OVER SIZE	W/O	WITHOUT

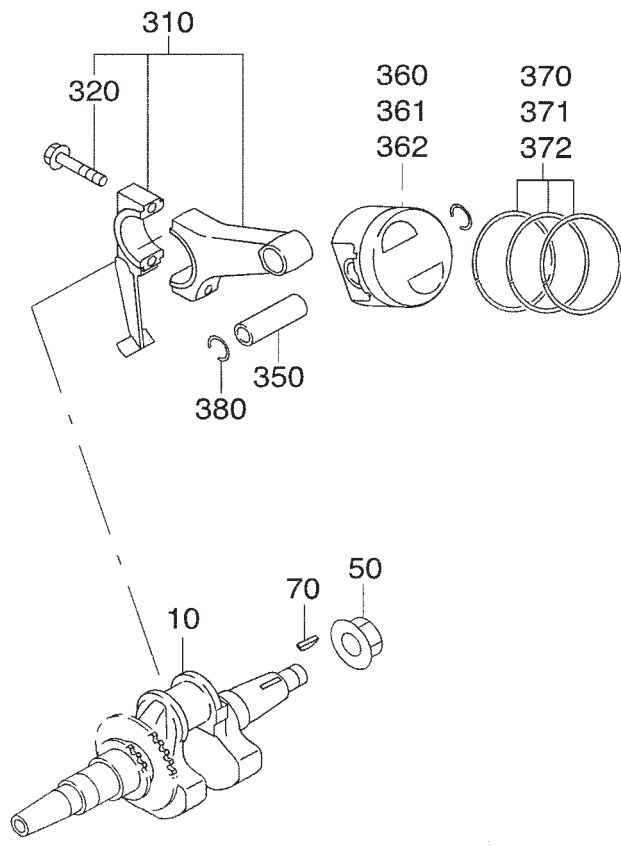
SECTION 1 CRANKCASE GROUP

FIG. 100



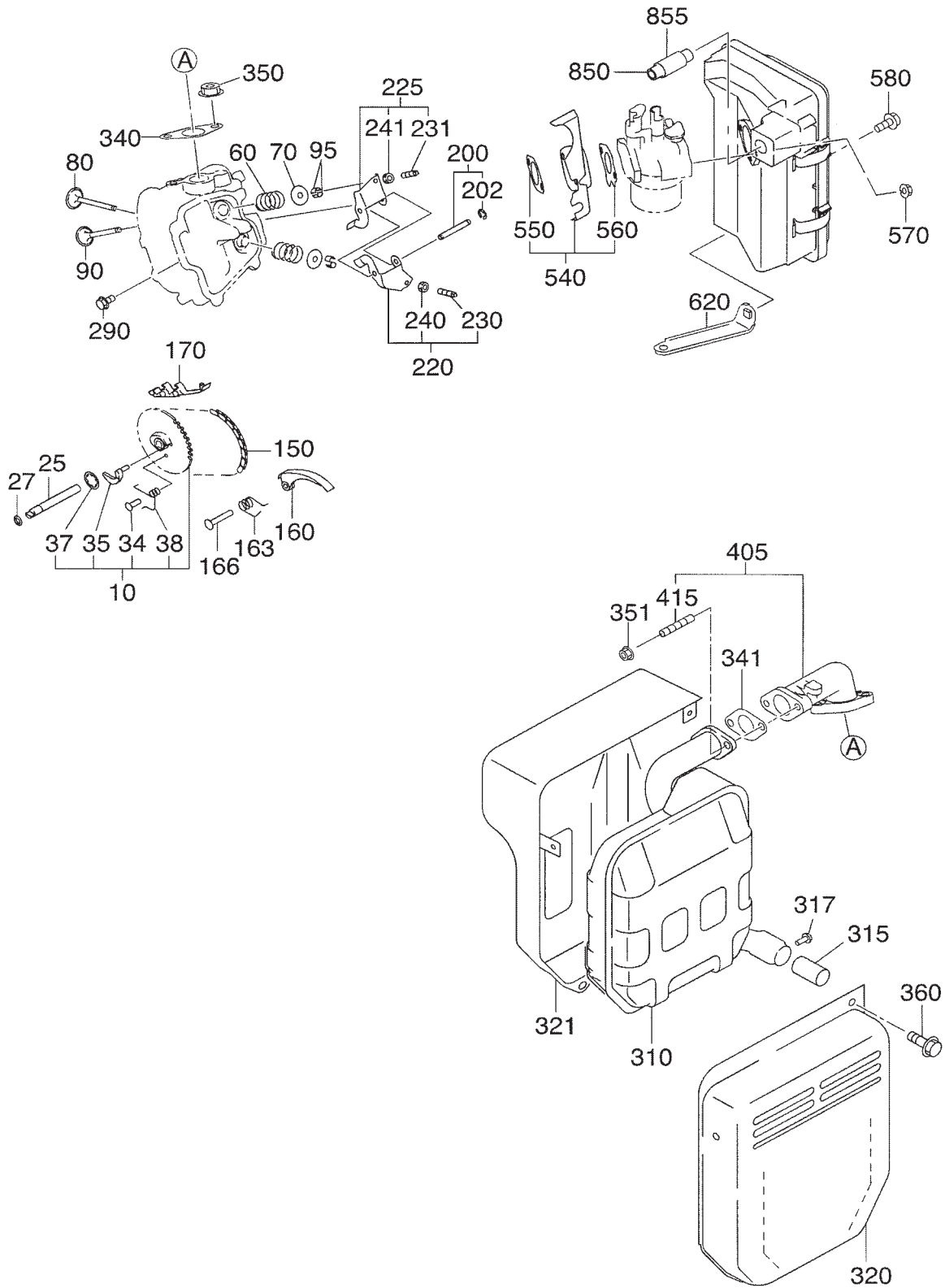
SECTION 2 CRANKSHAFT, PISTON GROUP

FIG. 200



SECTION 3 INTAKE, EXHAUST GROUP

FIG. 300

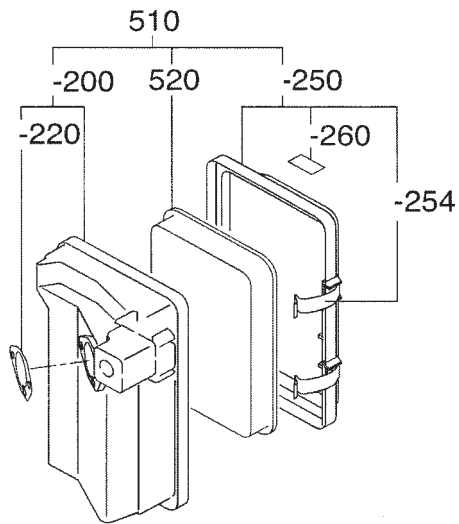


SECTION 3 INTAKE, EXHAUST GROUP

REF	PART NO	DESCRIPTION	QTY	REMARKS	FROM - TO	FIG
10	279 31602 11	CAMSHAFT	1			300
25	277 35101 03	PIN, camshaft	1			300
27	024-00600-10	O RING	1			300
34	277 38601 03	PIN, spring	1			300
35	279 36401 03	RELEASE LEVER	1			300
37	277 36501 03	CLIP	1			300
38	279-38701-13	RETURN SPRING	1			300
60	279 33601 03	VALVE SPRING	2			300
70	269-33701-03	SPRING RETAINER	2			300
80	279 33401 H3	INTAKE VALVE	1			300
90	279 33501 H3	EXHAUST VALVE	1			300
95	132 10KA0 31	COLLET VALVE	4			300
150	279 35601 11	TIMING CHAIN	1			300
160	277-36911-03	TENTIONER	1			300
163	277-37101-03	SPRING, tentioner	1			300
166	277-36902-03	PIN, tentioner	1			300
170	277 36913 13	CHAIN GUIDE	1			300
200	277 35002 01	PIN, rocker	1			300
202	003 13050 00	CLIP	1			300
220	277-36201-00	ROCKER ARM, intake	1			300
225	277 36202 00	ROCKER ARM, exhaust	1			300
230	014 90500 20	ADJUST SCREW	1			300
231	014 90500 20	ADJUST SCREW	1			300
240	017 00500 30	NUT	1			300
241	017 00500 30	NUT	1			300
290	011 00600 20	FLANGE BOLT	1			300
310	279 30202 01	MUFFLER	1			300
315	279 37602 01	SPARK ARRESTOR	1			300
317	015 00400 60	TAPPING SCREW	1			300
320	279 34501 11	MUFFLER COVER 1	1			300
321	279 34601 11	MUFFLER COVER 2	1			300
340	277 35201 13	GASKET, muffler	1			300
341	277 35201 01	GASKET, exhaust	1			300
350	980 20082 80	FLANGE NUT	2			300
351	980 20082 80	FLANGE NUT	2			300
360	011 00600 20	FLANGE BOLT	3			300
405	277 34001 01	EXHAUST PIPE	1			300
415	010 50802 90	STUD	2			300
540	279 32902 J1	INSULATOR	1			300
550	279 35903 J3	GASKET 2, insulator	1			300
560	279 35902 J3	GASKET 1, insulator	1			300
570	002 38060 00	FLANGE NUT	2			300
580	011 00600 50	FLANGE BOLT	1			300
620	279 39001 01	BRACKET, air cleaner	1			300
850	279 32760 08	RUBBER PIPE	1			300
855	279 69001 03	SPONGE PROTECTOR	1			300

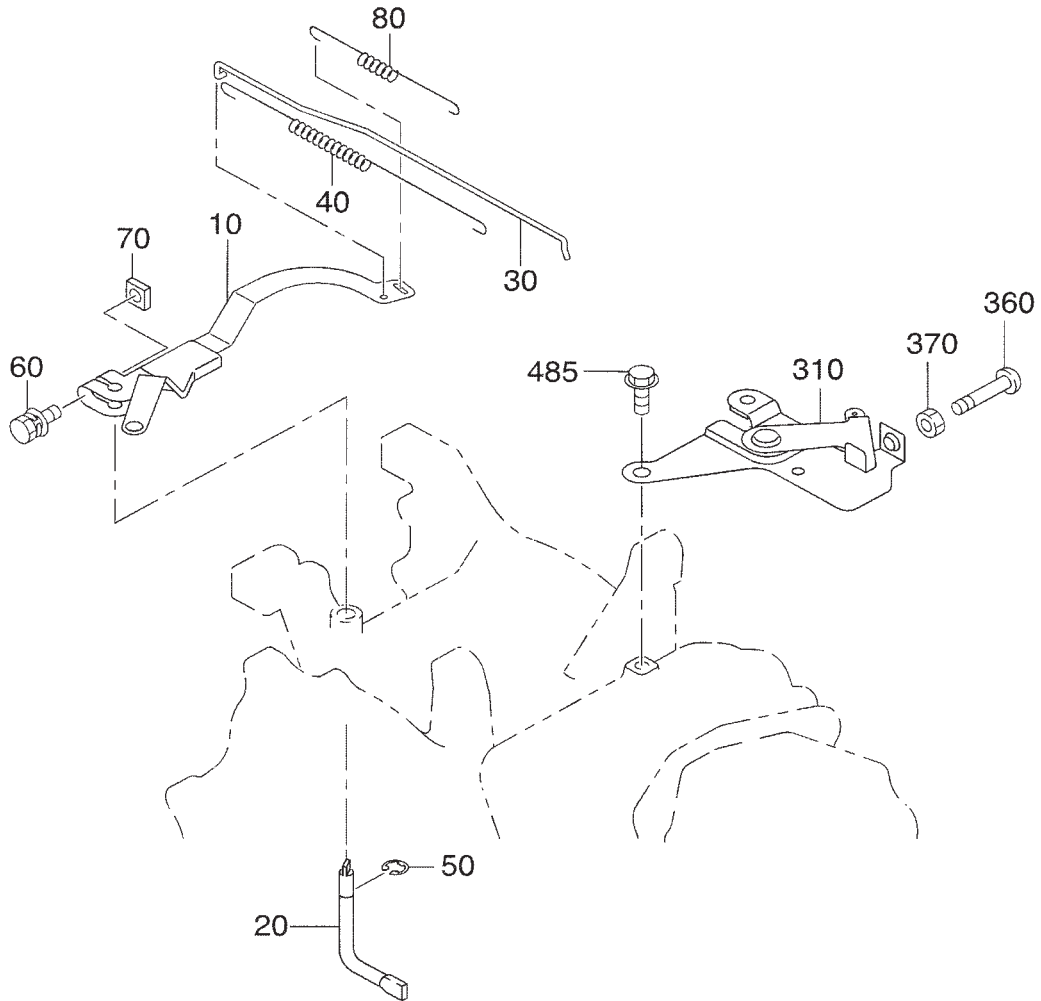
SECTION 3 INTAKE, EXHAUST GROUP

FIG. 310



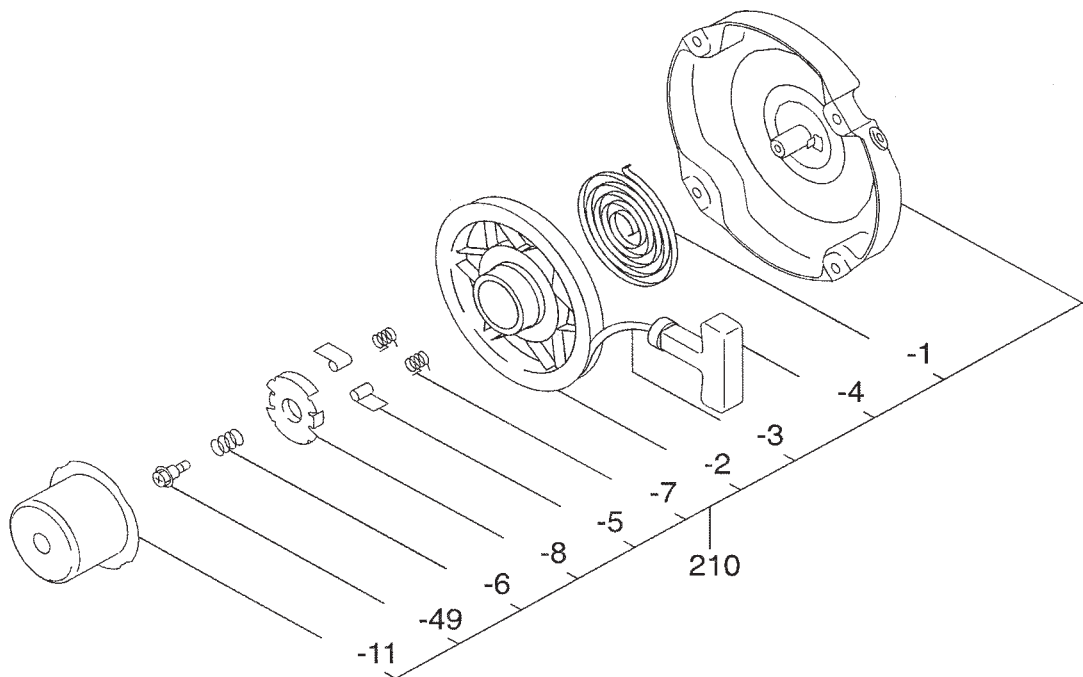
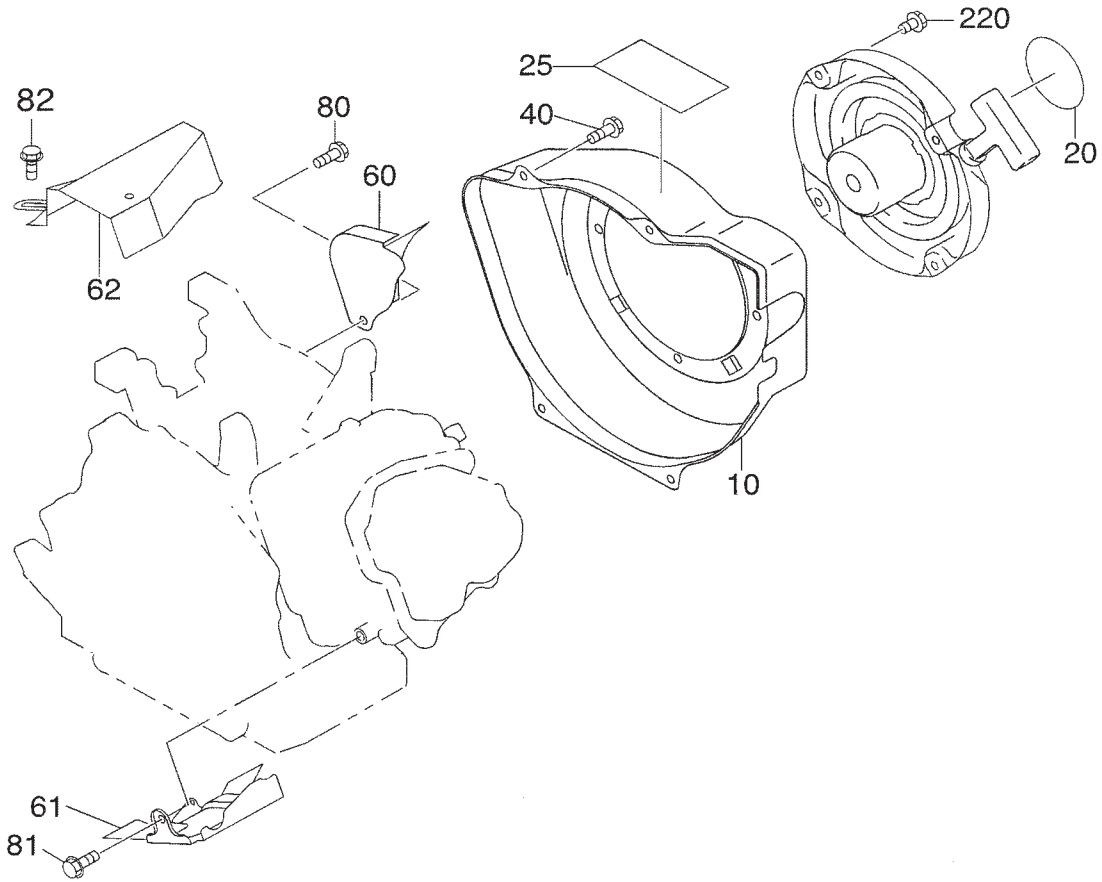
SECTION 4 GOVERNOR, OPERATION GROUP

FIG. 400



SECTION 5 COOLING, STARTING GROUP

FIG. 500

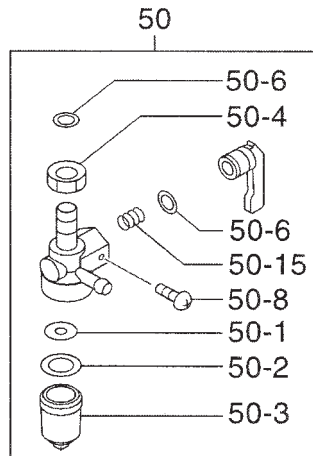
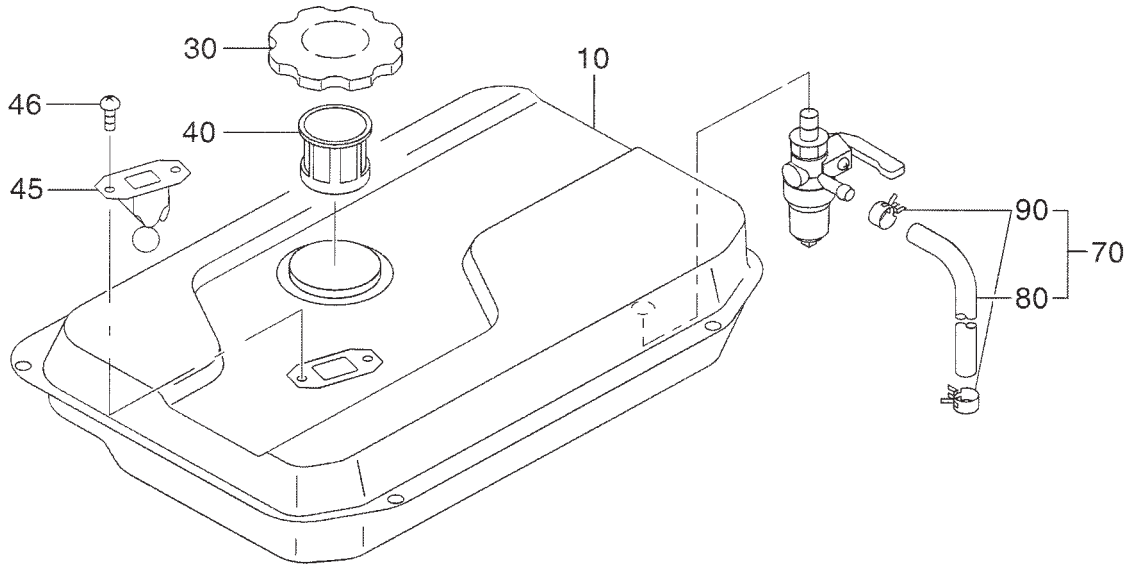


SECTION 5 COOLING, STARTING GROUP

REF	PART NO	DESCRIPTION	QTY	REMARKS	FROM - TO	FIG
10	279 51226 01	BLOWER HOUSING	1			500
20	073 20054 07	LABEL, trademark	1			500
25	073 20051 81	LABEL, warning	1			500
40	011 00600 30	FLANGE BOLT	4			500
60	279 52711 11	BAFFLE 1, case	1	Recoil Start Only		500
61	279 52702 13	BAFFLE 2, head	1			500
62	277 55001 11	DUCT, case	1			500
80	001 65081 20	BOLT	1	Recoil Start Only		500
81	011 00600 20	FLANGE BOLT	1			500
82	011 00600 20	FLANGE BOLT	3			500
210	011 00600 10	RECOIL STARTER AY	1			500
1	226 50716 08	SPIRAL SPRING	1			500
2	279 50120 08	REEL	1			500
3	279 50110 08	STARTER ROPE	1			500
4	226 50701 08	STARTER KNOB	1			500
5	279 50125 08	RATCHET	2			500
6	226 50731 08	FRICTION SPRING	1			500
7	226 50752 08	RATCHET SPRING	2			500
8	226 50741 08	FRICTION PLATE	1			500
11	279 50145 08	STARTER PULLEY	1			500
49	226 50753 18	CENTER SCREW	1			500
220	011 00600 10	FLANGE BOLT	4			500
						500

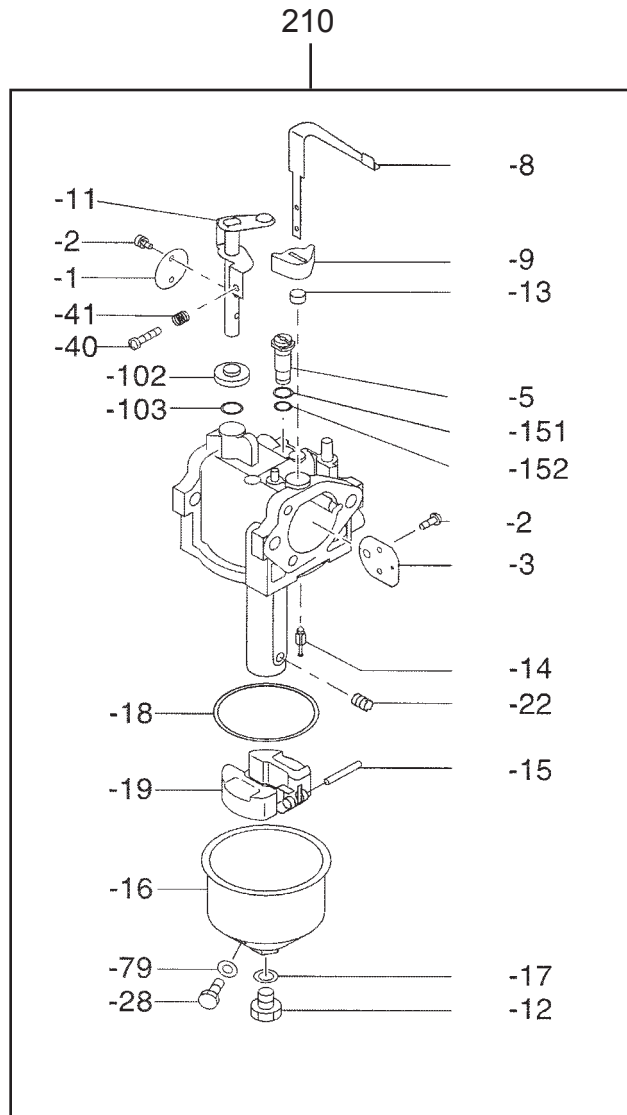
SECTION 6 FUEL, LUBRICANT GROUP

FIG. 600



SECTION 6 FUEL, LUBRICANT GROUP

FIG. 610

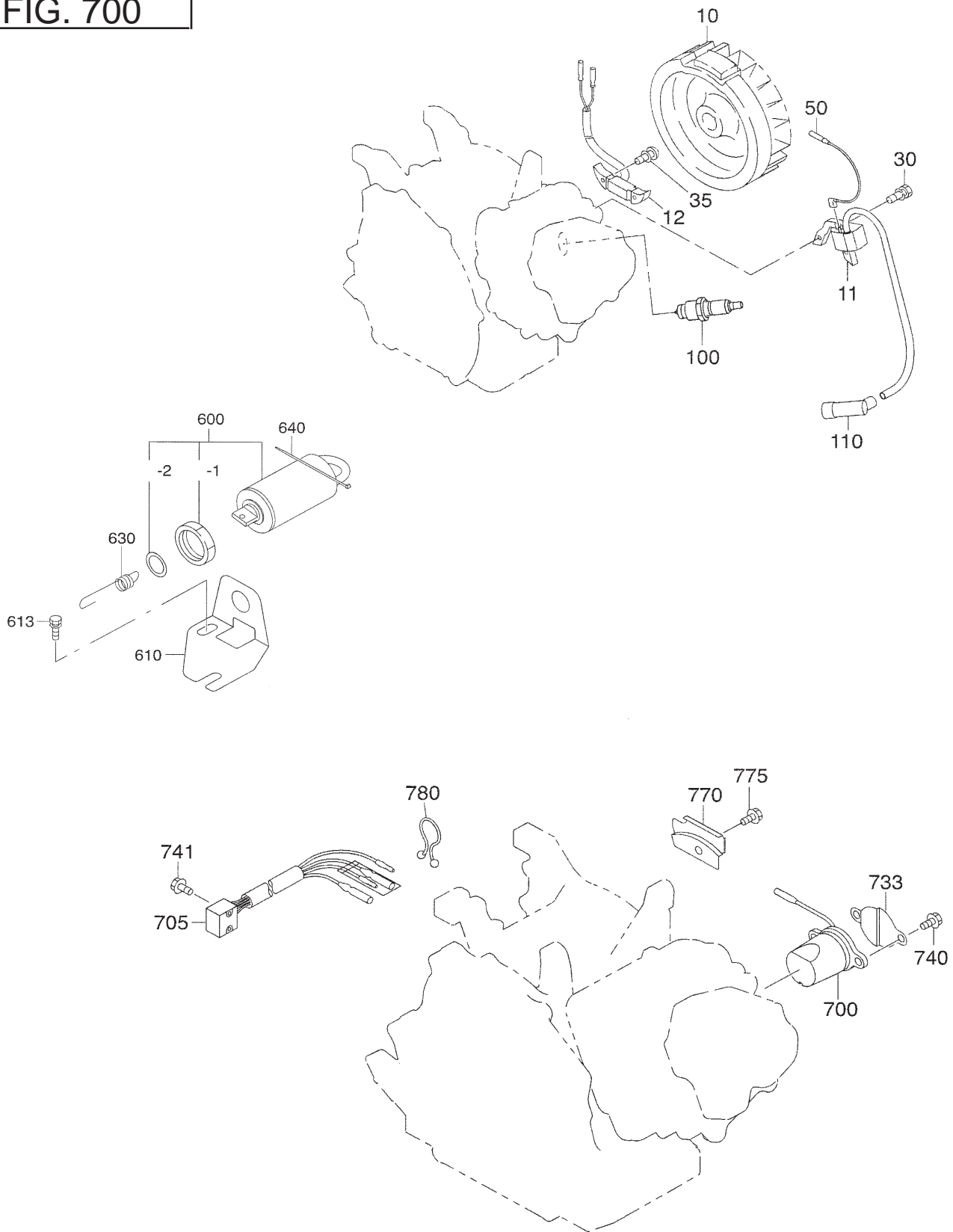


SECTION 6 FUEL, LUBRICANT GROUP

REF	PART NO	DESCRIPTION	QTY	REMARKS	FROM - TO	FIG
210	279 62304 40	CARBURETOR	1			610
1	279 62535 08	THROTTLE VALVE	1			610
2	251 62450 08	SCREW	4			610
3	279 62526 08	CHOKER VALVE	1			610
5	279 62420 08	SLOW JET	1			610
7	279 62570 18	CHOKER LEVER	1			610
9	279 62563 18	COLLAR SHAFT 1	1			610
11	279 62530 08	SHAFT, sub ay	1			610
12	251 62453 08	SCREW	1			610
13	279 62564 08	COLLAR SHAFT 2	1			610
14	279 62500 08	NEEDLE VALVE	1			610
15	279 62515 08	FLOAT PIN AY	1			610
16	285 62550 08	FLOAT CHAMBER SUB AY	1			610
17	251 62350 08	GASKET	1			610
18	279 62540 08	GASKET, chamber	1			610
19	279 62505 08	FLOAT, sub ay	1			610
22	279 62400 08	MAIN JET	1			610
28	285 62551 08	DRAIN SCREW	1			610
40	279 62353 18	ADJUSTING SCREW	1			610
41	279 62445 08	SPRING	1			610
79	285 62552 08	GASKET	1			610
102	279 62561 08	BUSH	1			610
103	279 62562 08	COLLAR	1			610
151	279 62451 08	O RING	1			610
152	279 62452 08	O RING	1			610

SECTION 7 ELECTRIC GROUP

FIG. 700

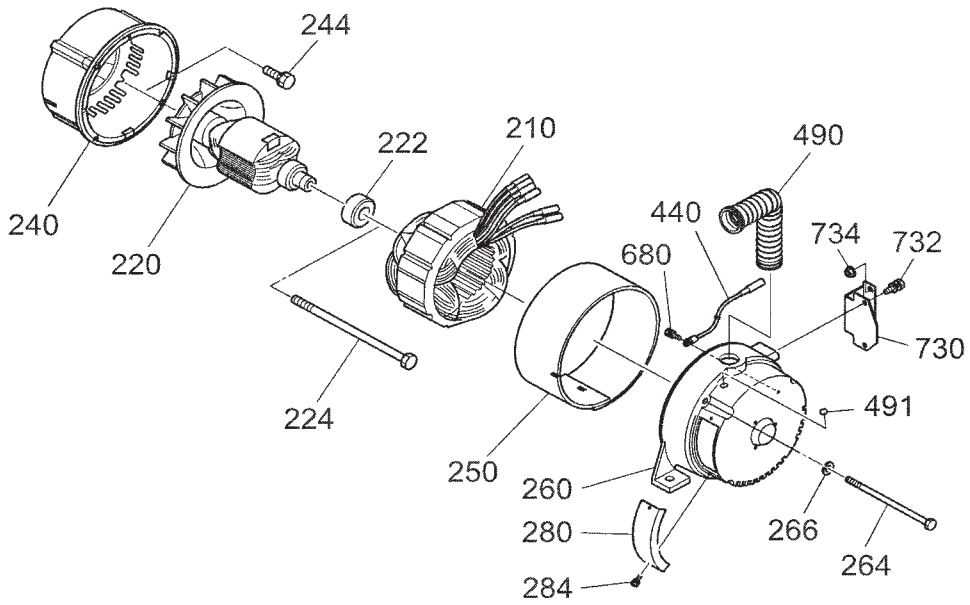


SECTION 7 ELECTRIC GROUP

REF	PART NO	DESCRIPTION	QTY	REMARKS	FROM - TO	FIG
10	279 79241 01	FLYWHEEL	1	Recoil		700
10	279 79251 01	FLYWHEEL	1	Electric		700
11	279 79430 01	IGNITION COIL	1	Recoil		700
11	279 79431 01	IGNITION COIL	1	Electric		700
12	279 79301 01	LAMP COIL	1			700
20	267 71002 03	RING GEAR	1	Electric		700
30	001 14062 50	BOLT and WASHER	2			700
35	001 13062 00	BOLT and WASHER	2			700
50	277 73102 H1	WIRE 2	1	Recoil		700
50	279 73105 H1	WIRE 5	1	Electric		700
100	065 01401 50	SPARK PLUG	1			700
110	065 50002 70	SPARK PLUG CAP	1			700
120	279 70502 00	STARTING MOTOR CP	1	Electric		700
125	279 76511 11	BRACKET	1	Electric		700
130	214 79007 01	BOLT CP, starter	2	Electric		700
135	011 00600 20	FLANGE BOLT	3	Electric		700
150	003 10080 00	WASHER	2	Electric		700
600	246 77303 01	SOLENOID	1			700
1	224 76506 08	NUT	1			700
2	224 76507 08	WASHER	1			700
610	279 76501 11	BRACKET, solenoid	1			700
613	001 14062 00	BOLT and WASHER	2			700
630	279 78201 13	SPRING, solenoid	1			700
640	056 30000 10	WIRE BAND	1			700
700	279 76301 41	OIL SENSOR	1			700
705	KU3 11070 01	FLOAT C/U CP 4	1			700
733	277 75801 03	SHIELD PLATE	1			700
740	013 00602 60	BOLT and WASHER	2			700
741	015 00400 90	TAPPING SCREW	2			700
770	279 75501 13	WIRE CLAMP	1			700
775	015 20600 50	TAPPING BOLT	1			700
780	056 90000 20	PURSE LOCK	1			700

SECTION 8 GENERATOR GROUP

FIG. 2200

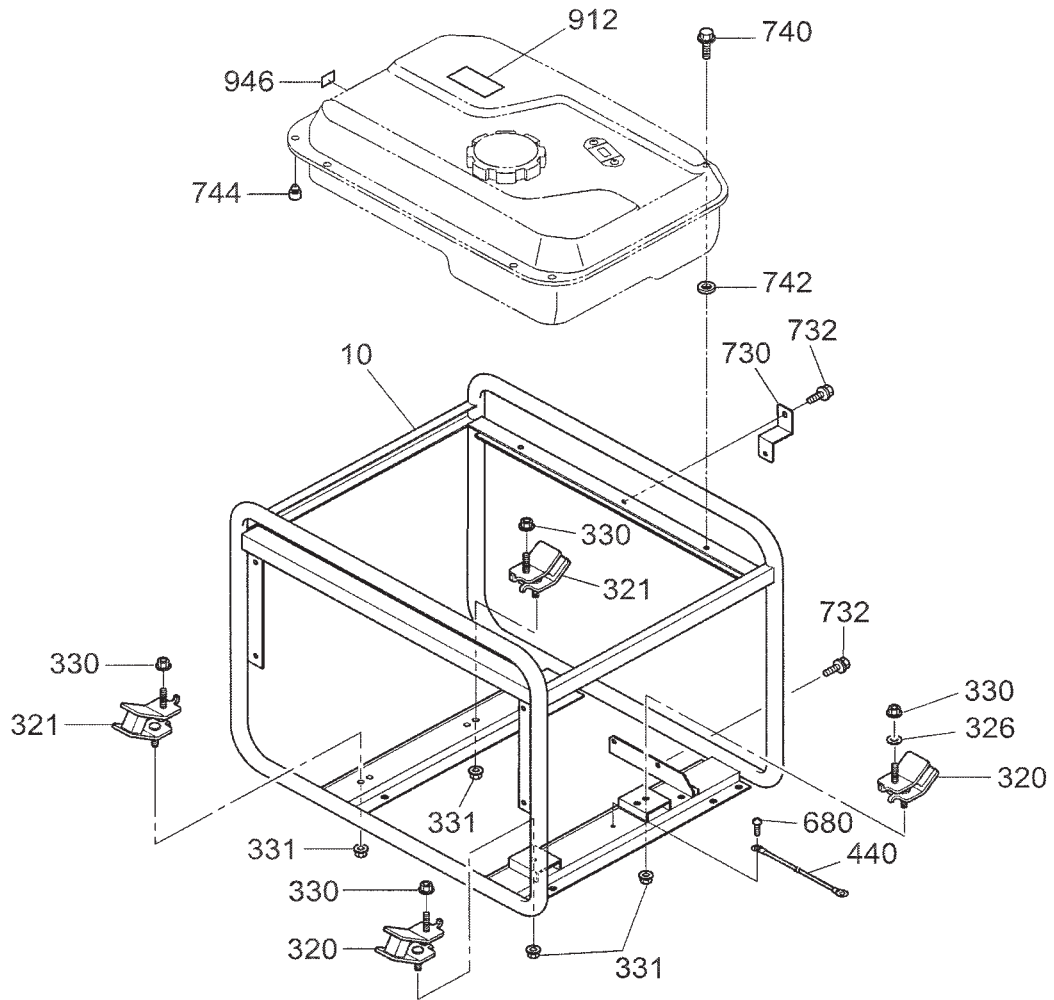


SECTION 8 GENERATOR GROUP

REF	PART NO	DESCRIPTION	QTY	REMARKS	FROM - TO	FIG
210	35C 51400 01	STATOR	1			2200
220	35C 51001 01	ROTOR	1			2200
222	35C 55001 01	BEARING	1			2200
224	35C 54001 01	THROUGH BOLT	1			2200
240	35C 52001 01	FRONT COVER	1			2200
244	359 59935 08	BOLT and WASHER	4			2200
250	35C 55012 01	STATOR COVER	1			2200
260	35C 52002 01	REAR COVER	1			2200
264	35C 54002 01	COVER BOLT	4			2200
266	003-20080-00	SPRING WASHER	4			2200
280	354 54513 08	BRUSH COVER	1			2200
284	30A-71202-03	SCREW and WASHER	2			2200
440	35C 53002 01	WIRE CP	1			2200
490	353 57506 08	BUSHING	1			2200
491	35C 53001 01	GROMMET	1			2200
680	392-49986-08	SCREW and WASHER	1			2200
730	35C 63001 01	MUFFLER BRACKET	1			2200
732	359 59935 08	BOLT and WASHER	2			2200
734	002 38080 00	FLANGE NUT	2			2200

SECTION 9 BASE, FRAME GROUP - RECOIL

FIG. 2300

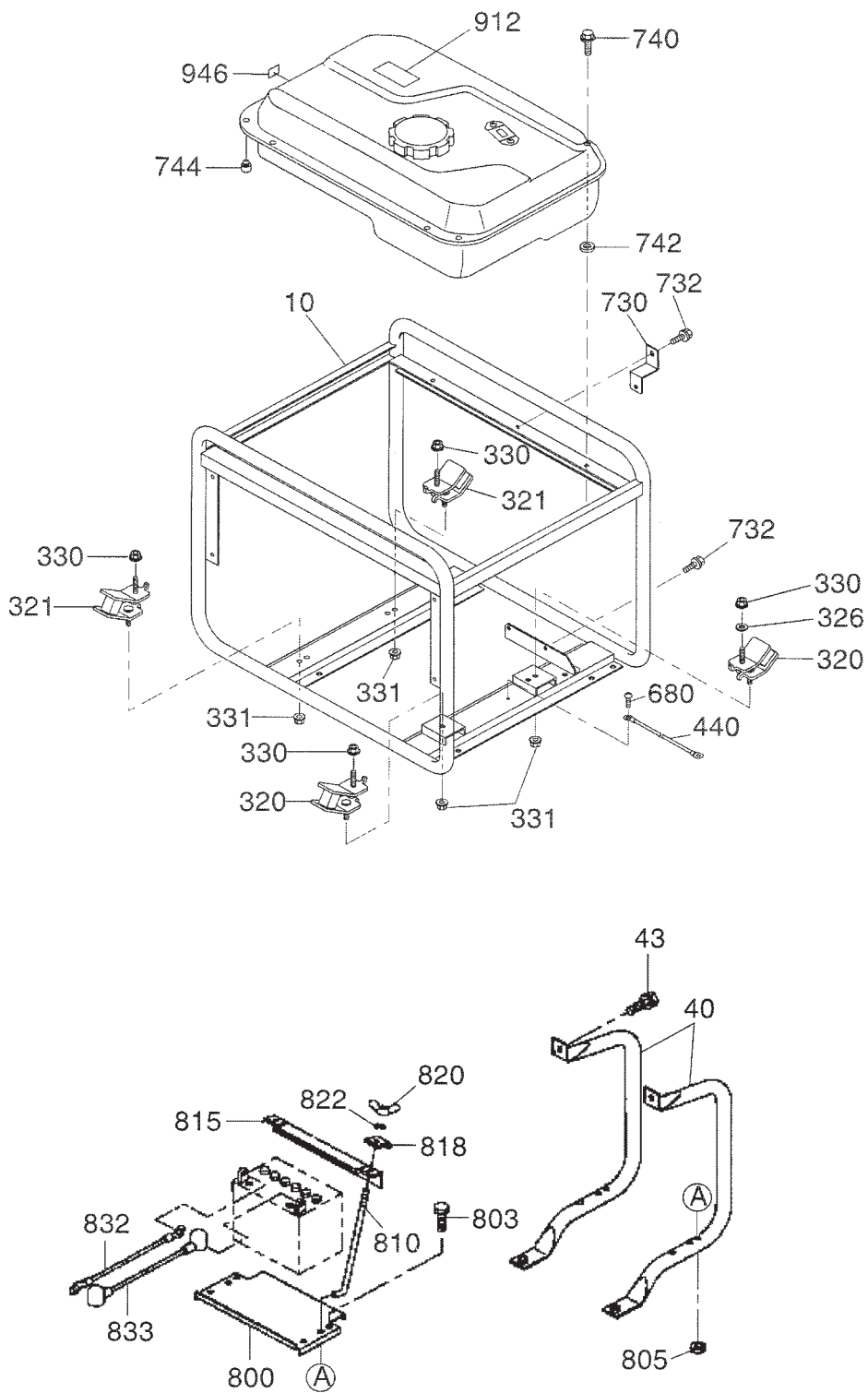


SECTION 9 BASE, FRAME GROUP - RECOIL

REF	PART NO	DESCRIPTION	QTY	REMARKS	FROM - TO	FIG
10	35C 61001 01	PIPE FRAME	1			2300
320	35C 62001 01	RUBBER MOUNT	2			2300
321	35C 62002 01	RUBBER MOUNT	2			2300
326	003-10100-00	WASHER	1			2300
330	002 38100 00	FLANGE NUT	4			2300
331	002 38080 00	FLANGE NUT	4			2300
440	35C 64001 01	EARTH CORD	1			2300
680	376-39100-01	SCREW and WASHER	1			2300
730	35C 63003 01	BRACKET, muff er cover	1			2300
732	35A 64001 01	FLANGE BOLT	6			2300
740	011 00602 20	FLANGE BOLT	2			2300
742	391 39000 13	RUBBER WASHER	2			2300
744	35C 62003 01	RUBBER MOUNT	2			2300
912	388 93003 03	LABEL, caution	1			2300
946	073 20050 80	LABEL, fuel strainer	1			2300

SECTION 9 BASE, FRAME GROUP - ELECTRIC START

FIG. 2300

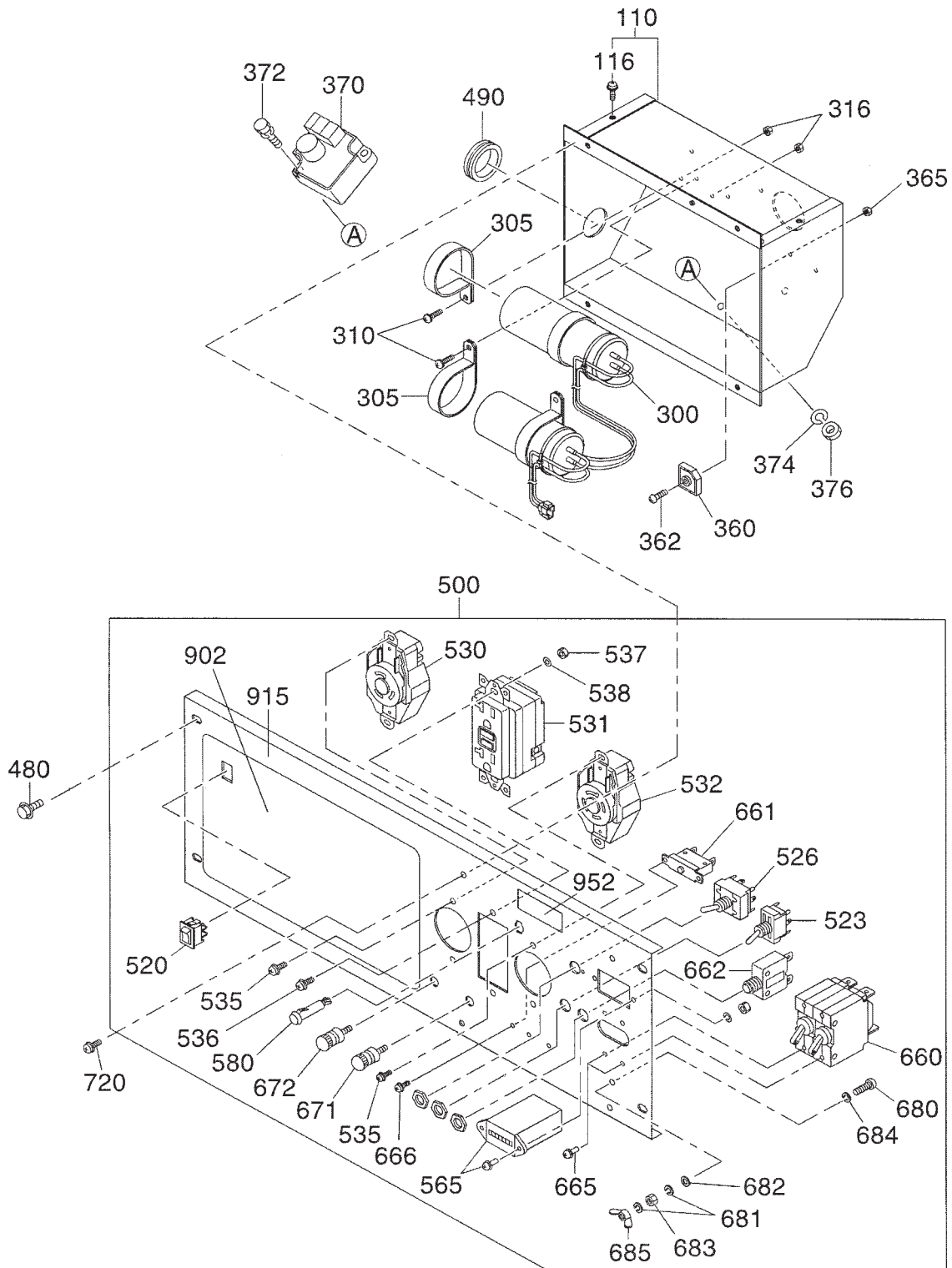


SECTION 9 BASE, FRAME GROUP - ELECTRIC START

REF	PART NO	DESCRIPTION	QTY	REMARKS	FROM - TO	FIG
10	35C 61001 01	PIPE FRAME	1			2300
40	390 56076 08	BATTERY FRAME	2			2300
43	359 59935 08	BOLT and WASHER	4			2300
320	35C 62001 01	RUBBER MOUNT	2			2300
321	35C 62002 01	RUBBER MOUNT	2			2300
326	003-10100-00	WASHER	1			2300
330	002 38100 00	FLANGE NUT	4			2300
331	002 38080 00	FLANGE NUT	4			2300
440	35C 64001 01	EARTH CORD	1			2300
680	376-39100-01	SCREW and WASHER	1			2300
730	35C 63003 01	BRACKET, muffler cover	1			2300
732	35A 64001 01	FLANGE BOLT	6			2300
740	011 00602 20	FLANGE BOLT	2			2300
742	391 39000 13	RUBBER WASHER	2			2300
744	35C 62003 01	RUBBER MOUNT	2			2300
800	389 54451 08	BATTERY BASE	1			2300
803	356 49955 08	BOLT	4			2300
805	002 38060 00	FLANGE NUT	4			2300
810	353 59921 08	BOLT	2			2300
815	385 54382 08	BATTERY ANGLE	1			2300
818	385 54416 08	BATTERY SUPPORT	2			2300
820	002-17060-00	NUT	2			2300
822	003-20060-00	SPRING WASHER	2			2300
832	35C 64003 01	BATTERY CORD	1			2300
833	35C 64002 01	BATTERY CORD	1			2300
912	388 93003 03	LABEL, caution	1			2300
946	073 20050 80	LABEL, fuel strainer	1			2300

SECTION 10 CONTROL GROUP - RECOIL

FIG. 2400

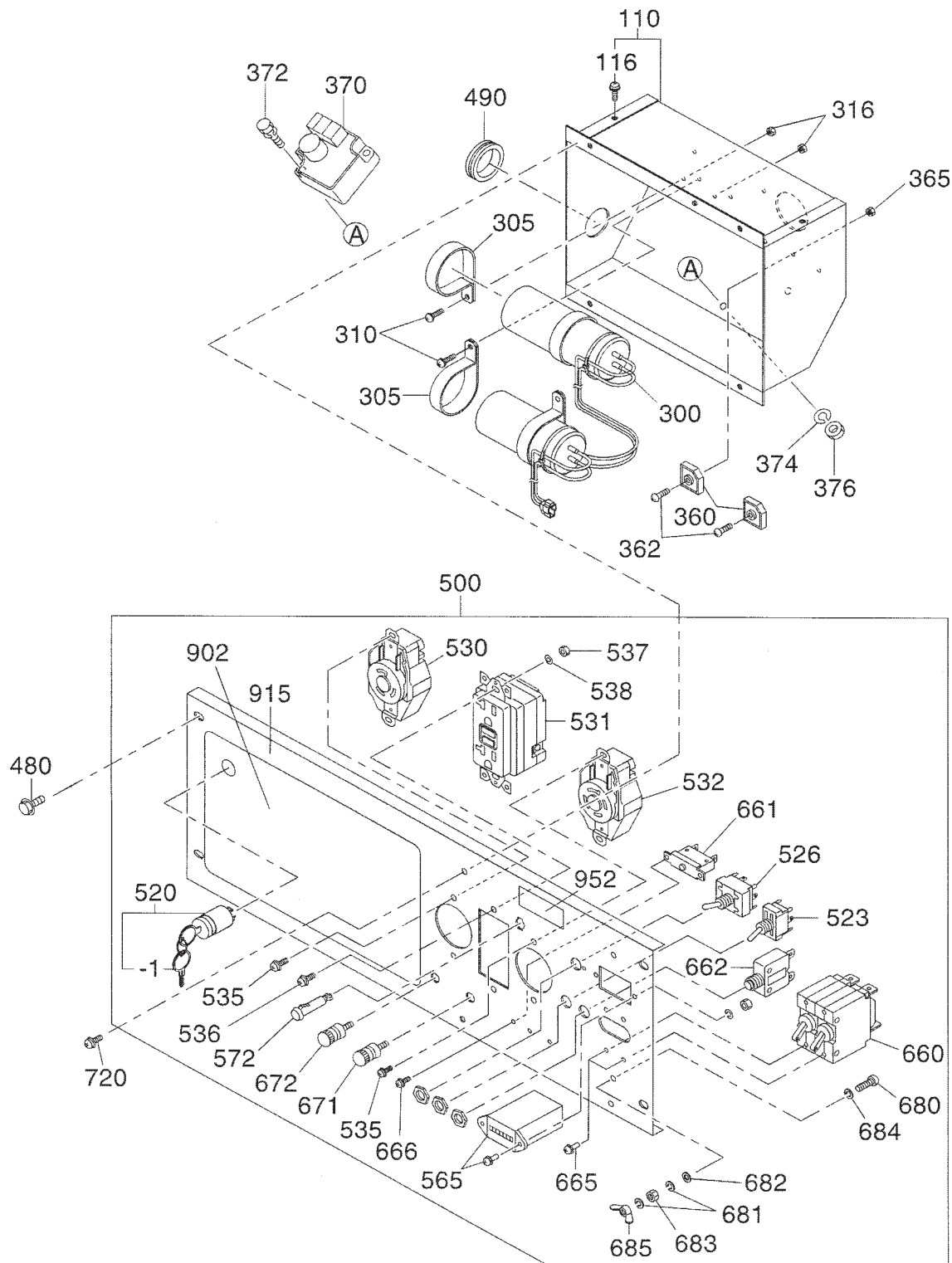


SECTION 10 CONTROL GROUP - RECOIL

REF	PART NO	DESCRIPTION	QTY	REMARKS	FROM - TO	FIG
100	35C 70107 00	CONTROL BOX AY	1			2400
110	35C 71102 02	CONTROL BOX UN	1			2400
116	359 59929 08	SCREW and WASHER	4			2400
300	35C 72001 03	CONDENSER	1			2400
305	30G 47605 08	CONDENSER HOLDER	4			2400
310	390-49972-08	SCREW and WASHER	4			2400
316	002-17040-00	NUT	4			2400
360	353 45804 08	DIODE STACK	1			2400
362	004-36042-00	SCREW and WASHER	1			2400
365	002 17040 00	NUT	1			2400
370	KU3 11015 01	IDLE C/U CP	1	150V		2400
372	004 35062 00	SCREW and WASHER	2			2400
374	003-20060-00	SPRING WASHER	2			2400
376	002-17060-00	NUT	2			2400
480	011 00600 80	FLANGE BOLT	4			2400
490	389-89001-03	GROMMET	1			2400
500	35C 70207 00	PANEL A AY	1			2400
520	35A 72002 03	ROCKER SWITCH	1			2400
523	344 45615 08	AUTO IDLE SWITCH	1			2400
526	355 45613 11	SWITCH AY	1			2400
530	35B 72003 03	AC RECEPTACLE	1	250V / 30A		2400
531	388 85003 01	AC RECEPTACLE	1	125V / 20A		2400
532	35C 72005 03	AC RECEPTACLE	1			2400
535	31C 79001 03	SCREW and WASHER	4			2400
536	351 49920 08	SCREW and WASHER	2			2400
537	002 17040 00	NUT	2			2400
538	003 10040 00	WASHER	4			2400
565	393 40651 08	HOUR METER	1	60Hz		2400
580	30G 45308 08	LAMP	1			2400
660	35C 72002 03	BREAKER	1			2400
661	352 45620 08	CIRCUIT BREAKER	1			2400
662	35C 72006 03	BREAKER	1			2400
665	31B 79011 03	SCREW and WASHER	4			2400
666	351 49921 08	SCREW and WASHER	2			2400
671	363 45701 08	TERMINAL BOLT	1	Red 20A		2400
672	363 45700 08	TERMINAL BOLT	1	Black 20A		2400
680	356 49956 08	SCREW	1			2400
681	332 00050 08	SPRING WASHER	2			2400
682	353 49903 08	WASHER	1			2400
683	353 49902 08	NUT	1			2400
684	372 59950 08	LOCK WASHER	1			2400
685	353 49901 08	WING NUT	1			2400
720	31B 79012 03	BOLT and WASHER	4			2400
902	35C 71209 02	LABEL, brand	1			2400
915	35C 71208 02	LABEL, panel	1			2400
952	391 93014 03	LABEL, ground	1			2400

SECTION 10 CONTROL GROUP - ELECTRIC

FIG. 2400



SECTION 10 CONTROL GROUP - ELECTRIC

REF	PART NO	DESCRIPTION	QTY	REMARKS	FROM - TO	FIG
100	35C 70108 00	CONTROL BOX AY	1			2400
110	35C 71102 02	CONTROL BOX UN	1			2400
116	359 59929 08	SCREW and WASHER	4			2400
300	35C 72001 03	CONDENSER	1			2400
305	30G 47605 08	CONDENSER HOLDER	4			2400
310	390-49972-08	SCREW and WASHER	4			2400
316	002-17040-00	NUT	4			2400
360	353 45804 08	DIODE STACK	1			2400
362	004-36042-00	SCREW and WASHER	1			2400
365	002 17040 00	NUT	1			2400
370	KU3 11015 01	IDLE C/U CP	1	150V		2400
372	004 35062 00	SCREW and WASHER	2			2400
374	003-20060-00	SPRING WASHER	2			2400
376	002-17060-00	NUT	2			2400
480	011 00600 80	FLANGE BOLT	4			2400
490	389-89001-03	GROMMET	1			2400
500	35C 70208 00	PANEL A AY	1			2400
520	066 00003 30	SWITCH	1			2400
1	066 00099 80	KEY, switch	1			2400
523	344 45615 08	AUTO IDLE SWITCH	1			2400
526	355 45613 11	SWITCH AY	1			2400
530	35B 72003 03	AC RECEPTACLE	1	250V / 30A		2400
531	388 85003 01	AC RECEPTACLE	1	125V / 20A		2400
532	35C 72005 03	AC RECEPTACLE	1			2400
535	31C 79001 03	SCREW and WASHER	4			2400
536	351 49920 08	SCREW and WASHER	2			2400
537	002 17040 00	NUT	2			2400
538	003 10040 00	WASHER	4			2400
565	393 40651 08	HOUR METER	1	60Hz		2400
572	30G 45308 08	LAMP	1			2400
660	35C 72002 03	BREAKER	1			2400
661	352 45620 08	CIRCUIT BREAKER	1			2400
662	35C 72006 03	BREAKER	1			2400
665	31B 79011 03	SCREW and WASHER	4			2400
666	351 49921 08	SCREW and WASHER	2			2400
671	363 45701 08	TERMINAL BOLT	1	Red 20A		2400
672	363 45700 08	TERMINAL BOLT	1	Black 20A		2400
680	356 49956 08	SCREW	1			2400
681	332 00050 08	SPRING WASHER	2			2400
682	353 49903 08	WASHER	1			2400
683	353 49902 08	NUT	1			2400
684	372 59950 08	LOCK WASHER	1			2400
685	353 49901 08	WING NUT	1			2400
720	31B 79012 03	BOLT and WASHER	4			2400
902	35C 71211 02	LABEL, brand	1			2400
915	35C 71210 02	LABEL, panel	1			2400
952	391 93014 03	LABEL, ground	1			2400

SECTION 12 ACCESSORIES GROUP

FIG. 2900

