

Onan

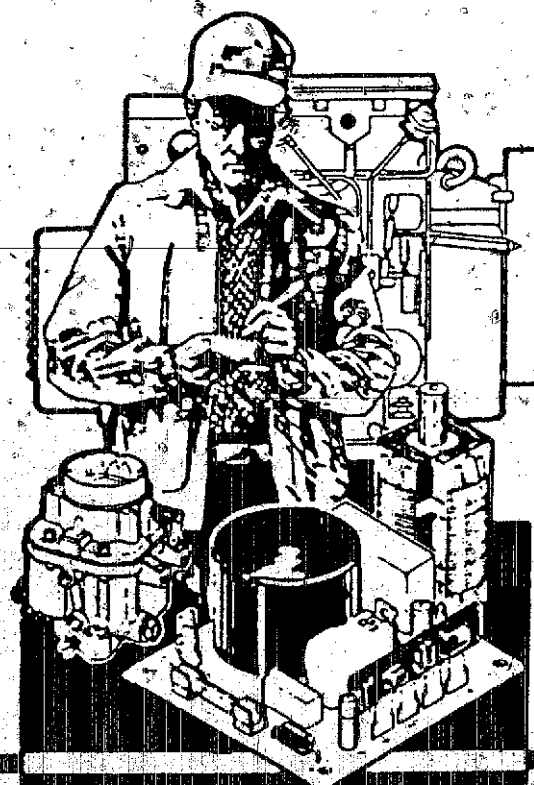
Parts Manual

DTBA / DXBA

DTCA / DXCA

DTCB / DXCB

GenSet



Onan Service Parts

903-0200

10-87 (Spec A)

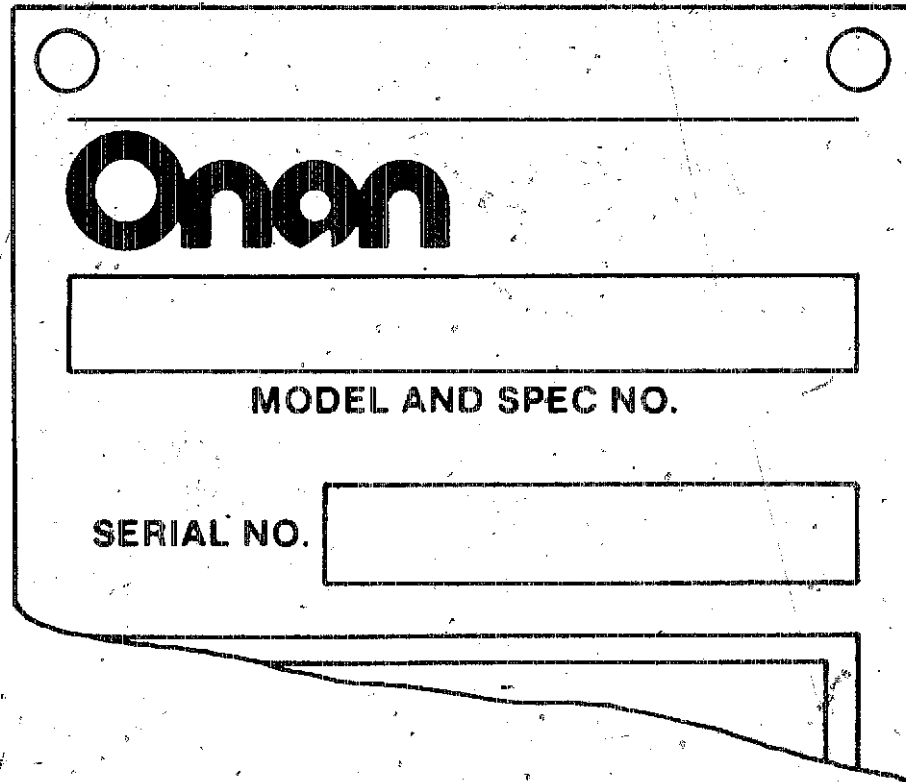
Printed **Howson**
Generation

Redistribution or publication of this document
by any means, is strictly prohibited.

General Information

For parts or service, contact the dealer from whom you purchased this equipment or refer to your Nearest Authorized Onan Parts and Service Center.

To avoid errors or delay in filling your parts order, always give the MODEL, SPEC NO. and SERIAL NO. from the Onan nameplate.

A rectangular template for an Onan nameplate. It features the Onan logo at the top. Below the logo is a large rectangular box for the model and specification number. Below that is a smaller rectangular box for the serial number, preceded by the text "SERIAL NO.". The template has two circular holes at the top corners and a pointed bottom edge.

Onan

MODEL AND SPEC NO.

SERIAL NO.

M-1146

For handy reference, insert "YOUR" nameplate information in the spaces above.

TABLE OF CONTENTS

	GRID
INDEX	A4
INTRODUCTION	A5
ENGINE COMPONENTS	A6
EXHAUST SYSTEM	A7
EXHAUST SYSTEM	A8
AIR CLEANER (STANDARD) DTBA,DXBA	A9
AIR CLEANER (STANDARD) DTCA,DTCB;DXCA,DXCB	A10
AIR CLEANER (HEAVY DUTY) DTCA,DTCB;DXCA,DXCB	A11
ELECTRONIC GOVERNOR	A12
COOLING SYSTEM (RADIATOR)	A14
CHASSIS.....	B2
HEATER ENGINE COOLANT	B3
GENERATOR	B4
STATOR SECTION OF GENERATOR	B6
STATOR SECTION OF GENERATOR [DTCB&DXCB EXT STACK CODE L&Z ONLY]	B8
ROTOR SECTION OF GENERATOR	B10
ROTOR SECTION OF GENERATOR [DTCB&DXCB EXT STACK CODE L&Z ONLY]	B12
OVERSPEED SWITCH	B13
OVERSPEED SENSOR	B14
PERMANENT MAGNET EXCITER	C1
CONTROL HEATER	C2
GENERATOR SET CONTROL	C4
ENGINE CONTROL	C6
GENERATOR CONTROL	C8
WATTMETER.....	C9
POTENTIAL TRANSFORMER.....	C10
NUMERICAL INDEX.....	C11

Index

Actuator, Governor
Adapter, Exhaust

Bell, End - Generator

Cable, Battery
Cable, Pickup - Magnetic
Cap, Radiator 11
Cap, Rain - Exhaust
Chassis
Cleaner, Air
Control, Engine
Control, Generator
Control, Generator Set
Cooling System

Drain, Oil

Exhaust System

Fan, Cooling
Filter, Air

Gasket, Drain - Oil
Gauge, Pressure - Oil
Gauge, Temperature - Oil
Gauge, Temperature - Water
Generator
Governor, Electronic
Guard, Belt
Guard, Fan

Harness, Wiring - Control (AC)
Harness, Wiring - Control (DC)
Harness, Wiring - Control To Engine
Heater, Control
Heater, Coolant - Engine
Hose, Drain - Oil
Hose, Radiator
Housing, Control

GRID

A12 Indicator, Service - Air Cleaner
A7, A8
B7, B9 Light, Indicator
Line, Fuel - Flex
A6 Meter, Ampere
B14 Meter, Frequency
A14 Meter, Tach
A7, A8 Meter, Time - Running
B2
A9, A10, A11 Pickup, Magnetic
C6
C8 Radiator
C4 Rotor, Exciter
A14 Rotor, Exciter - Components
Rotor, Generator
A6
A7, A8 Sender, Pressure - Oil
Sender, Temperature - Lo Engine
Sender, Temperature - Oil
A14 Sender, Temperature - Water
A9, A10, A11 Silencer, Exhaust
Stator, Exciter
Stator, Generator
C6 Switch, Overspeed
C6 Switch, Pressure - Lo Oil
C6 Switch, Push - Reset/Panel
B4 Switch, Push - Run/Stop/Remote
A12 Switch, Rotary - Generator Control
A14 Switch, Temperature - Hi Water
A14 Switch, Temperature - Pre Water
C8 Thermostat, Heater - Water
C6 Transformer, Current
C6 Transformer, Potential
C2
B3 Valve, Drain - Oil
A6 Voltmeter
A14
C4 Wattmeter

GRID

A9, A10, A11
C6
A6
C8
C8
C8
C8
B14
A14
B10, B12
B10, B12
B10, B12
A6
A6
A6
A6
A7, A8
B7, B9
B7, B9
B13
A6
C6
C6
C8
A6
A6
B3
C4
C10
A6
C6, B12
C9

Introduction

This Parts Manual applies to the Standard Gen Sets Listed below. The illustrations are arranged in groups of related items, and each part or assembly is identified by a Reference Number. All parts illustrated are typical, and unless otherwise mentioned in the description column the parts are interchangeable between models.

These typical illustrations are subject to change and reflect only the latest replacement parts arrangement. The Right and Left sides of the Set are determined by FACING the FRONT (Engine end) of the Set.

Set Data Table

MODEL IDENTIFICATION	RATING	RPM RATING	BATTERY VOLTAGE
35.0 DTBA/DXBA - */ # @	35,000 WATTS	1500 RPM	24 VDC
40.0 DTBA/DXBA - */ # @	40,000 WATTS	1800 RPM	24 VDC
40.0 DTCA/DXCA - */ # @	40,000 WATTS	1500 RPM	24 VDC
50.0 DTCA/DXCA - */ # @	50,000 WATTS	1800 RPM	24 VDC
50.0 DTCB/DXCB - */ # @	50,000 WATTS	1500 RPM	24 VDC
60.0 DTCB/DXCB - */ # @	60,000 WATTS	1800 RPM	24 VDC

Electrical Data Table

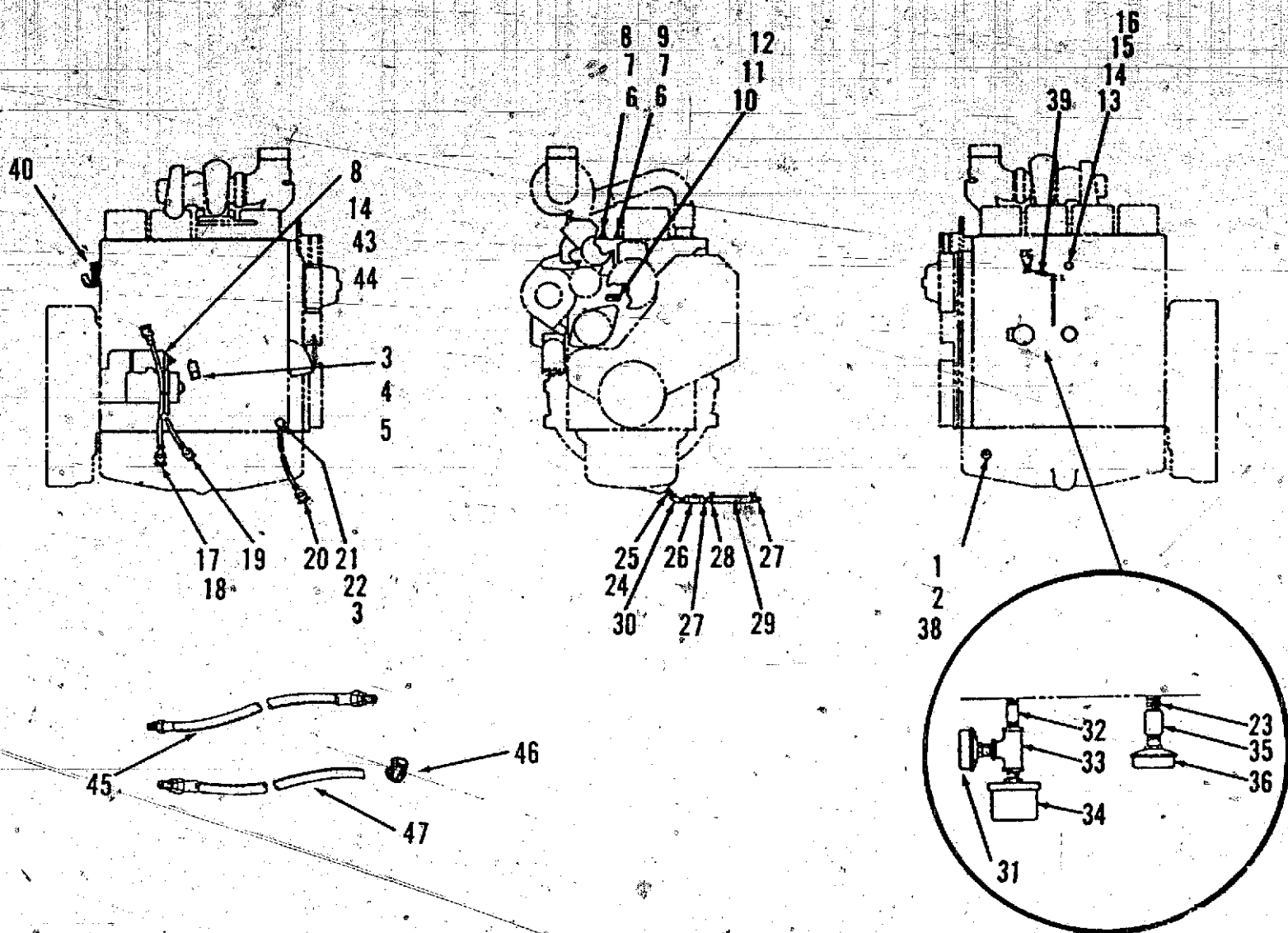
*VOLTAGE CODE	VOLTS	HERTZ	WIRE	PHASE	NOTES
H	347/600	60	4	3	
L	120/208	60	12	3	
	127/220	60	12	3	
	139/240	60	12	3	
	240/416	60	12	3	
	254/440	60	12	3	
	277/480	60	12	3	
Z	110/190	50	12	3	
	115/200	50	12	3	
	120/208	50	12	3	
	127/220	50	12	3	
	220/380	50	12	3	
	230/400	50	12	3	
	240/416	50	12	3	
	254/440	50	12	3	

- * - Voltage Codes follow Model Letter designations.
- # - Specification Number: Number 1 is Standard, all others indicate variations.
- @ - Specification Letter: Letter advances (A to B, B to C, etc) with major manufacturing changes.
- + - The Stators are Reconnectable.

Engine Replacement Parts

The Engine replacement parts can be ordered from the Cummins Engine Distributor except those parts modified or added during the Gen Set Assembly. When ordering engine parts, refer to the Engine Data plate and supply the Model, Serial, and CPL numbers. For assistance in ordering the Engine replacement parts, contact the nearest Cummins Engine Distributor or the Supplier from whom you purchased the Generator Set.

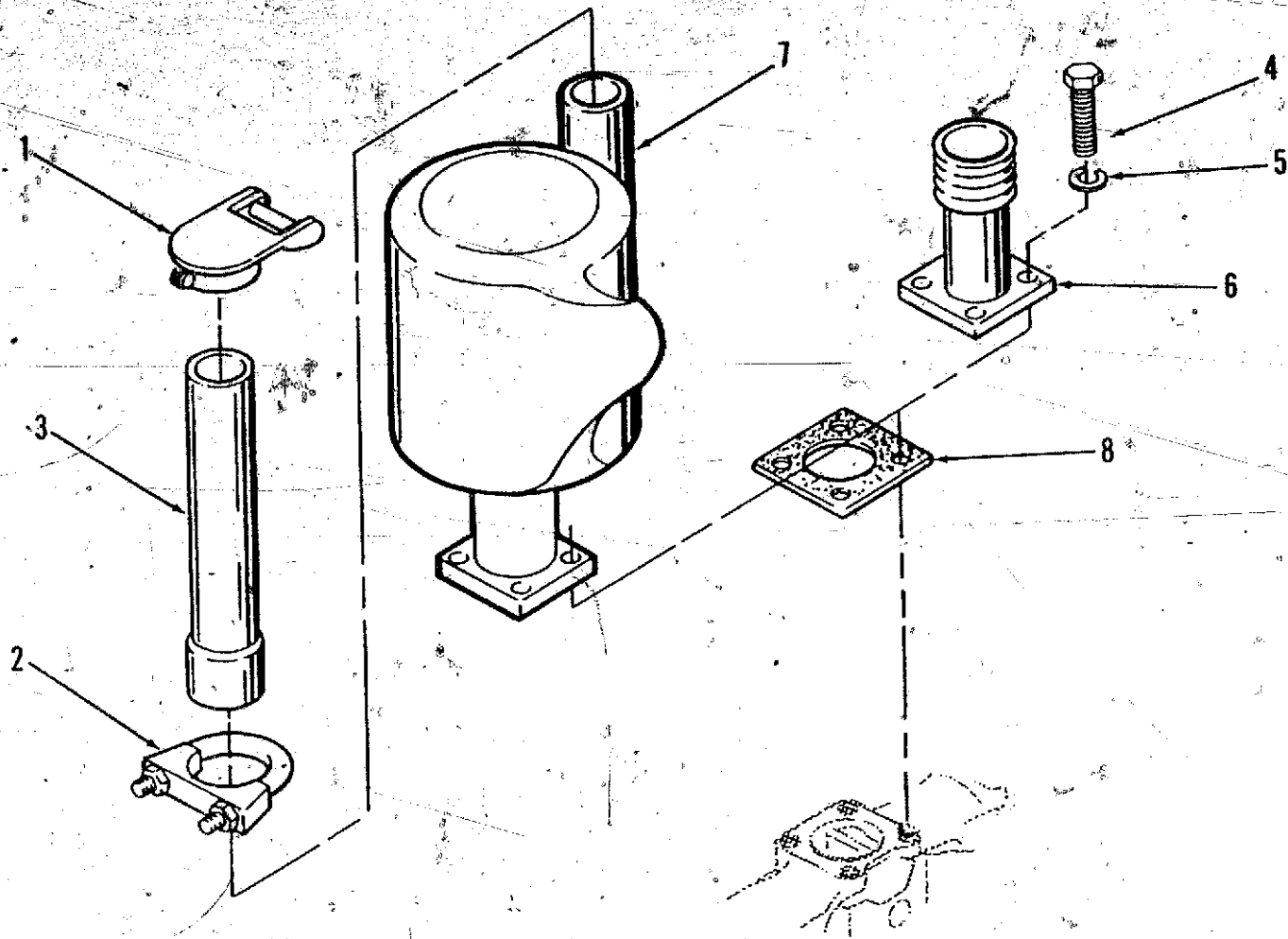
Engine Components (External)



REF NO.	PART NO.	QTY USED	PART DESCRIPTION	REF NO.	PART NO.	QTY USED	PART DESCRIPTION
1	193-0353	1	Sender, Temperature - Oil	22	850-2012	1	Washer, Lock (M12)
2	187-0146	1	Washer, Sealing	23	505-0098	1	Nipple, Close
3	856-0013	3	Washer, Lock - EIT (1/2")	24	102-1147	1	Gasket, Drain - Oil Pan
4	332-2739	1	Bracket Assembly, Terminal	25	102-1237	1	Adapter, Drain - Oil
5	800-2112	1	Screw, Cap - Hex Head (M12-1.75 x 30mm)	26	504-0011	1	Valve, Shutoff
6	309-0554	1	Switch, Temperature	27	505-0185	2	Nipple, Half
7	812-0075	1	Screw, Machine - Round Head (#8-32 x 1/4")	28	503-0197	2	Clamp, Hose
8	850-0025	2	Washer, Lock (#8)	29	503-0098	1	Hose, Drain (6")
9	309-0553	1	Switch, Temperature	30	505-0248	1	Elbow, Pipe - Street
10	800-2060	1	Screw, Cap - Hex Head (M8-1.25 x 35mm)	31	309-0169	1	Switch, Pressure - Oil
11	850-2008	1	Washer, Lock (M8)	32	505-0104	1	Nipple, Pipe - Short
12	309-0269	1	Switch, Temperature	33	505-0059	1	Tee, Pipe - Black
13	193-0375	1	Sender, Temperature	34	193-0244	1	Sender, Pressure - Oil
14	526-0008	2	Washer, Flat (#10)	35	505-0026	1	Coupling, Pipe
15	850-0030	1	Washer, Lock (#10)	36	309-0272	1	Switch, Pressure - Oil
16	871-0010	1	Nut, Cap - Hex Head (#10-32)	38	505-1373	1	Bushing, Reducer
17	416-0446	1	Cable, Battery (9")	39	145-0596	1	Spring, Extension - Throttle
18	332-0941	2	Tie, Cable	40	332-2921	2	Clamp, J
19	416-0619	1	Cable, Battery (18")	41	850-2006	1	Washer, Lock - Spring (M6)
20	416-0893	1	Cable, Battery (10")	42	860-2007	1	Nut, Hex (M6)
21	800-2110	1	Screw, Cap - Hex Head (M12-1.75 x 20mm)	43	871-0028	1	Nut, Hex (3/8-16)
				44	850-0050	1	Washer, Lock - Spring (3/8")
				45	501-0441	1	Line, Fuel - Flex (Fuel In)
				46	503-0685	1	Clamp, Hose
				47	501-0502	1	Line, Fuel - Flex (Fuel Out)

Exhaust System

DTBA, DXBA

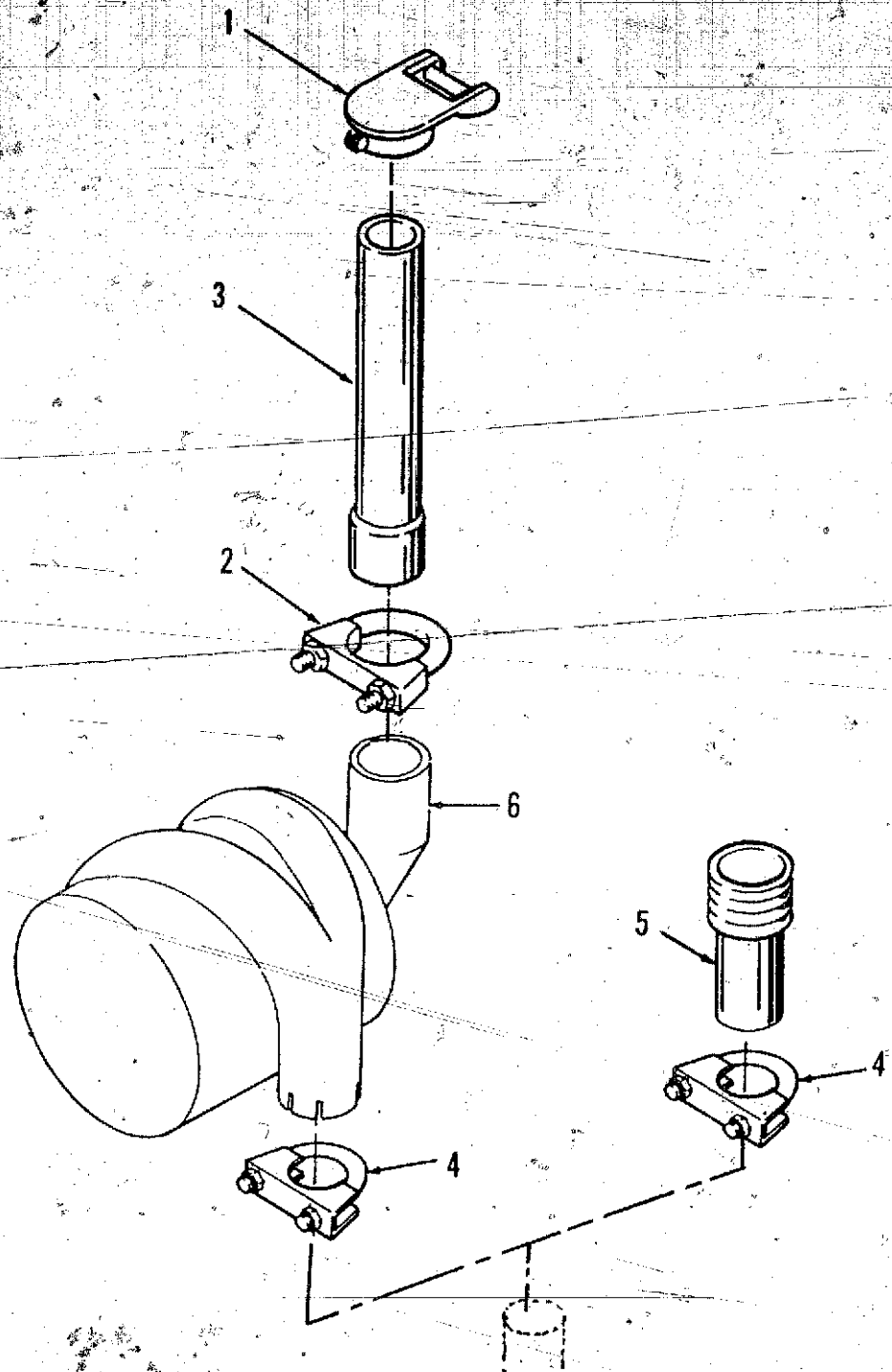


REF NO.	PART NO.	QTY USED	PART DESCRIPTION
1	155-2062-01	1	Cap, Rain
2	155-2080	1	Clamp, Muffler
3	154-2581	1	Tube, Exhaust
4	800-2086	4	Screw, Cap - Hex Head (M10-1.5 x 25mm)

REF NO.	PART NO.	QTY USED	PART DESCRIPTION
5	850-2010	4	Washer, Lock - Spring (M10)
6	154-2706	1	Adapter, Exhaust
7	155-2257	1	Silencer
8	154-2708	1	Gasket

Exhaust System

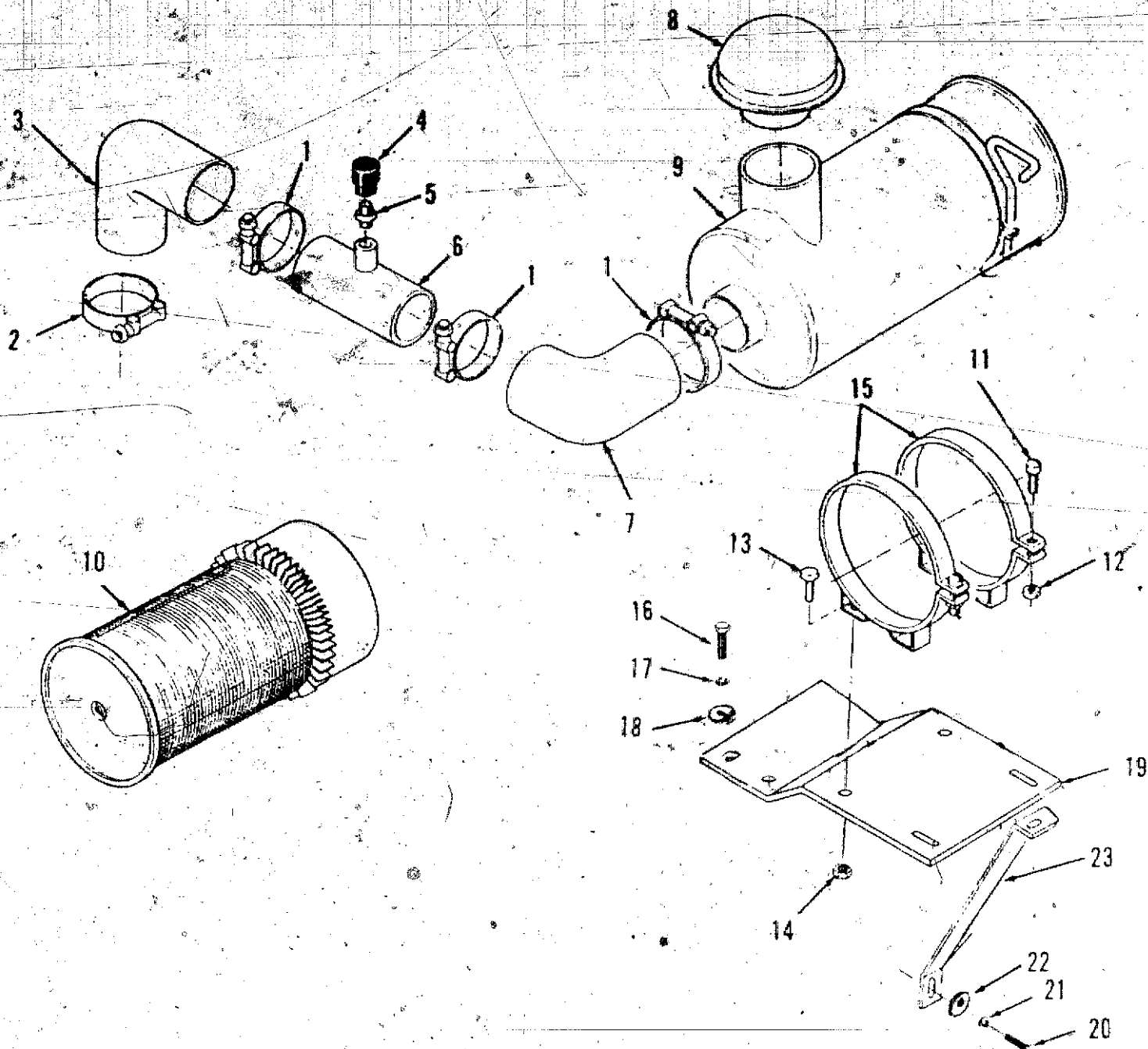
DTCA, DTCB
DXCA, DXCB



REF NO.	PART NO.	QTY USED	PART DESCRIPTION
1	155-2062-01	1	Cap, Rain
2	155-2080	1	Clamp, Muffler
3	154-2581	1	Tube, Exhaust

REF NO.	PART NO.	QTY USED	PART DESCRIPTION
4	155-2175	1	Clamp, Muffler
5	154-2253	1	Adapter, Exhaust
6	155-2256	1	Silencer

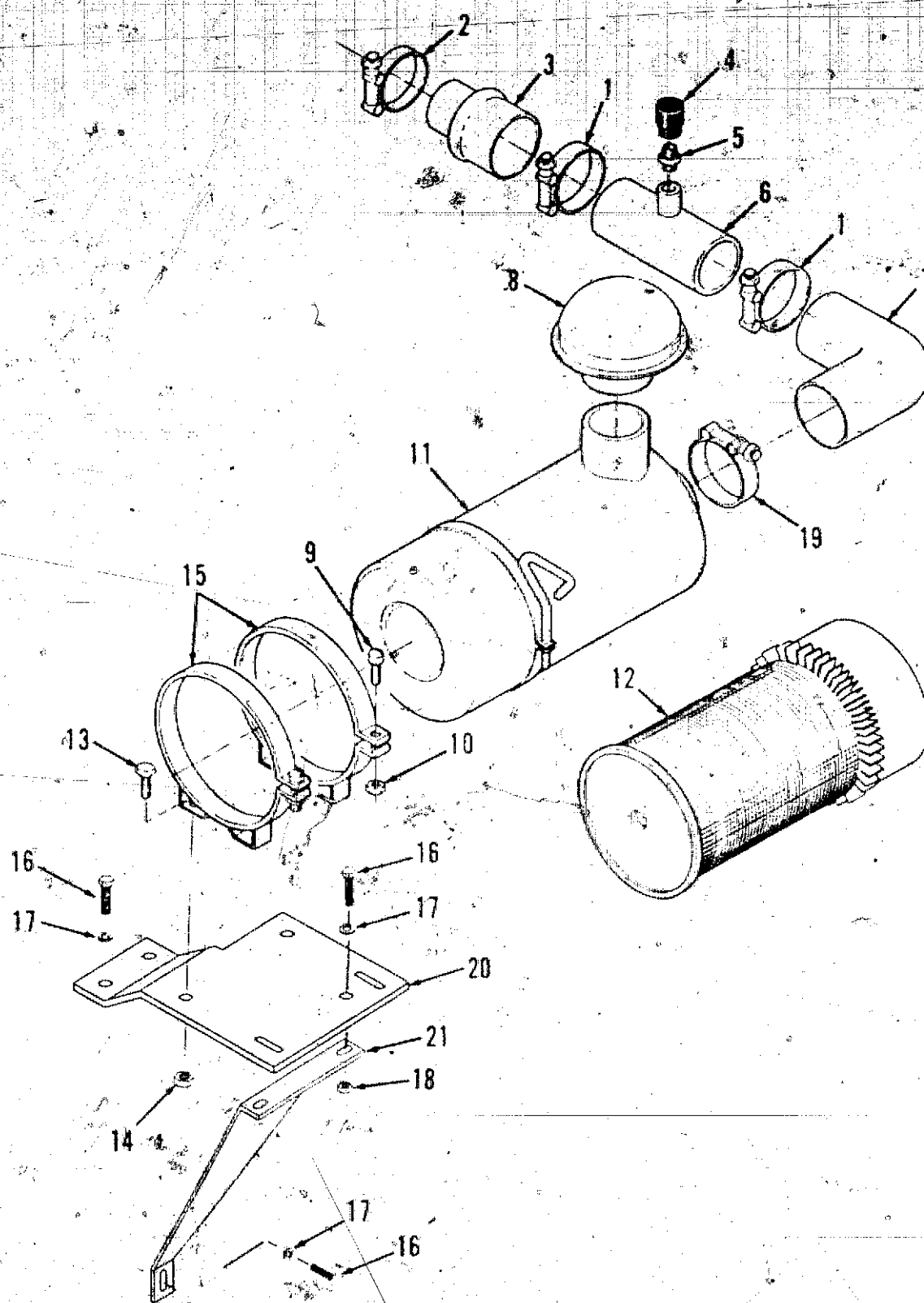
Air Cleaner - Standard DTBA, DXBA



REF NO.	PART NO.	QTY USED	PART DESCRIPTION
1	503-0999	3	Clamp, Hose
2	503-0868	1	Clamp, Hose
3	503-1520	1	Elbow, Reducing
4	140-1548	1	Indicator, Service
5	140-1260	1	Adapter, Indicator
6	140-2177	1	Tube, Inlet - Air
7	140-1864	1	Elbow
8	140-2157	1	Cap, Air Cleaner
9	140-2158	1	Cleaner, Air (Includes Element)
10	140-2159	1	Element, Air Cleaner
11	815-0115	2	Screw, Machine - Filster Head (1/4-20 x 1")
12	863-0002	2	Nut, Square (1/4-20)

REF NO.	PART NO.	QTY USED	PART DESCRIPTION
13	821-0029	4	Screw, Self-locking - Hex Head (3/8-16 x 3/4")
14	870-0281	4	Nut, Self-locking - Hex (3/8-16)
15	140-0078	2	Band, Cleaner - Air
16	800-2084	2	Screw, Cap - Hex Head (M10 x 1.5 x 16mm)
17	850-2010	2	Washer, Lock (M10)
18	526-2120	2	Washer, Flat (M10)
19	140-2178	1	Bracket, Mounting
20	800-2110	1	Screw, Cap - Hex Head (M12 x 1.75 x 20mm)
21	850-2012	1	Washer, Lock (M12)
22	526-2140	1	Washer, Flat (M12)
23	140-2179	1	Brace, Mounting

Air Cleaner - Standard DTCA, DTCB DXCA, DXCB



REF NO.	PART NO.	QTY USED	PART DESCRIPTION
1	503-0998	2	Clamp, Hose
2	503-0868	1	Clamp, Hose
3	503-1543	1	Hose, Reducing
4	140-1548	1	Indicator, Service
5	140-1260	1	Adapter, Indicator
6	140-2166	1	Tube, Inlet - Air
7	503-1542	1	Elbow, Hose - Reducing
8	140-2157	1	Cap, Air Cleaner
9	815-0115	2	Screw, Machine - Fillister Head (1/4-20 x 1")
10	863-0002	2	Nut, Square (1/4-20)
11	140-2158	1	Cleaner, Air (Includes Element)

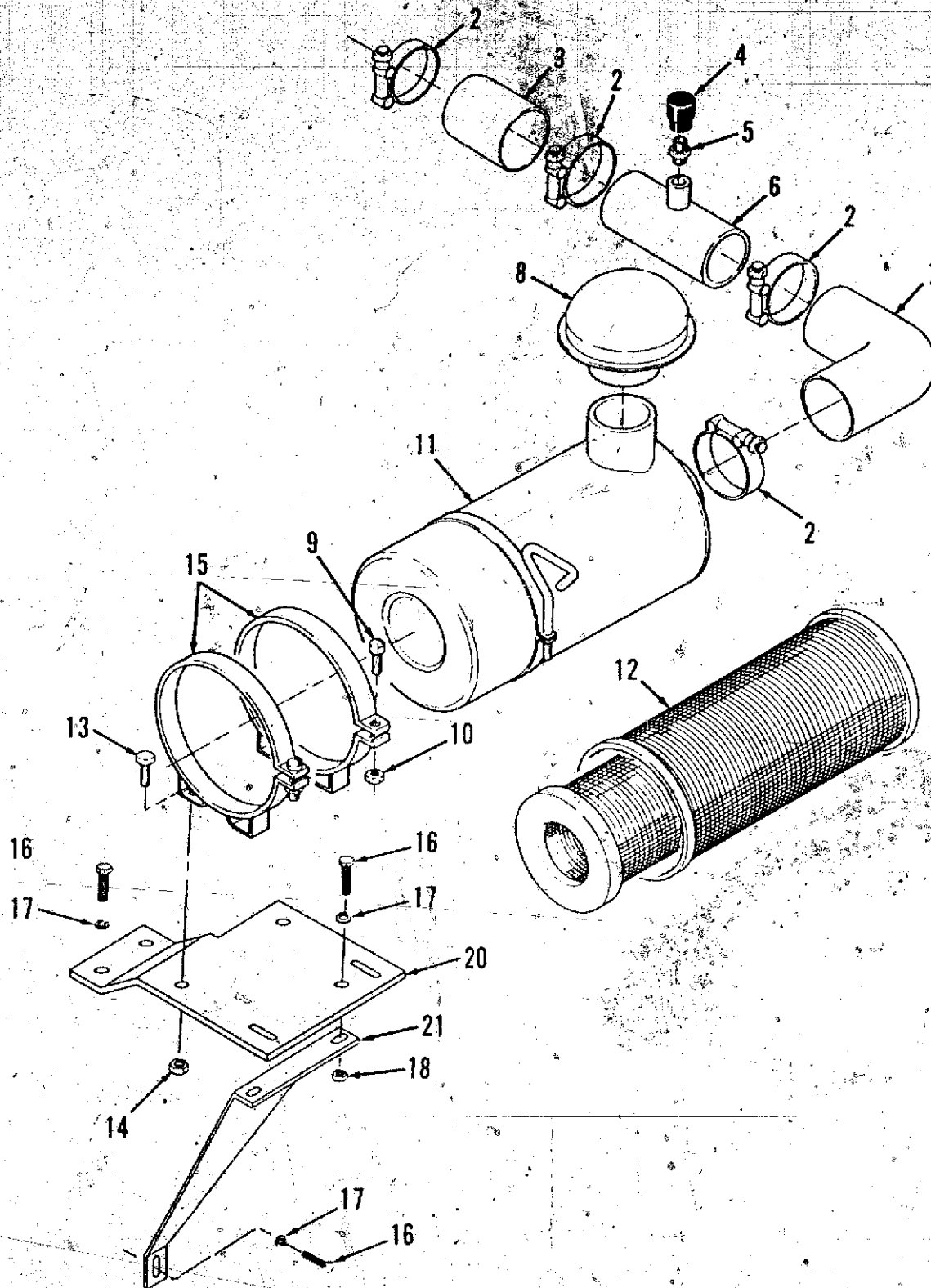
REF NO.	PART NO.	QTY USED	PART DESCRIPTION
12	140-2159	1	Element, Air Cleaner
13	821-0029	4	Screw, Self-locking - Hex Head (3/8 - 16 x 3/4")
14	870-0281	4	Nut, Lock (3/8-16)
15	140-0078	2	Band, Mounting
16	800-2110	4	Screw, Cap - Hex Head (M12 x 8 x 20mm)
17	850-2012	4	Washer, Lock - Spring (M12)
18	750-1010	1	Nut, Hex (M12)
19	503-0999	1	Clamp, Hose
20	140-2164	1	Bracket, Mounting
21	140-2163	1	Brace, Mounting

Redistribution or publication of this document by any means, is strictly prohibited.

Air Cleaner - Heavy Duty

DTCA, DTCB

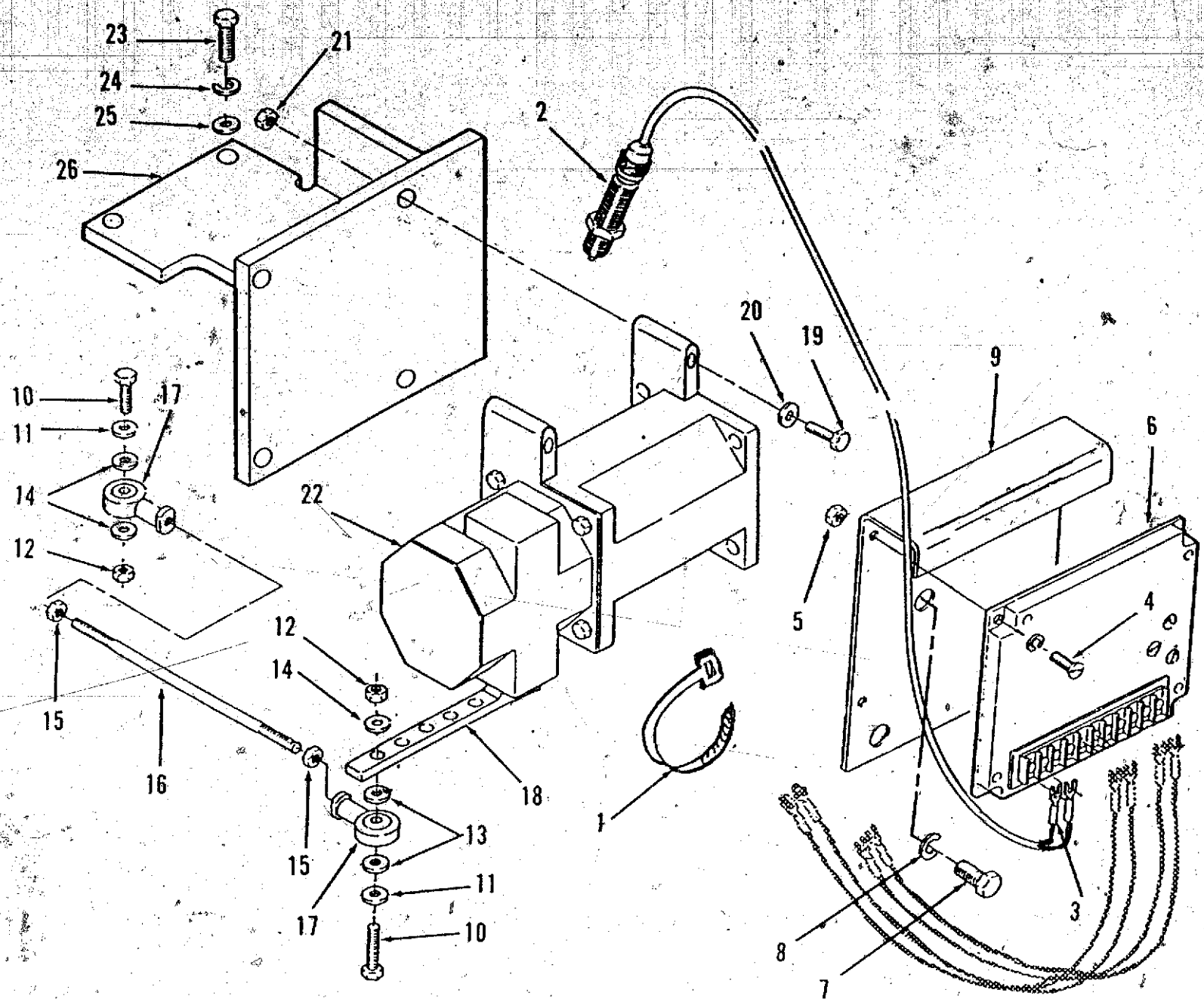
DXCA, DXCB



REF NO.	PART NO.	QTY USED	PART DESCRIPTION
2	503-0868	4	Clamp, Hose
3	503-1460	1	Hose
4	140-1548	1	Indicator, Service
5	140-1260	1	Adapter, Indicator
6	140-2168	1	Tube, Inlet - Air
7	503-1467	1	Elbow
8	140-1435	1	Cap, Air Cleaner
9	815-0115	2	Screw, Machine - Fillister Head (1/4-20 x 1")
10	863-0002	2	Nut, Square, (1/4-20)
11	140-2160	1	Cleaner, Air (Includes Element)

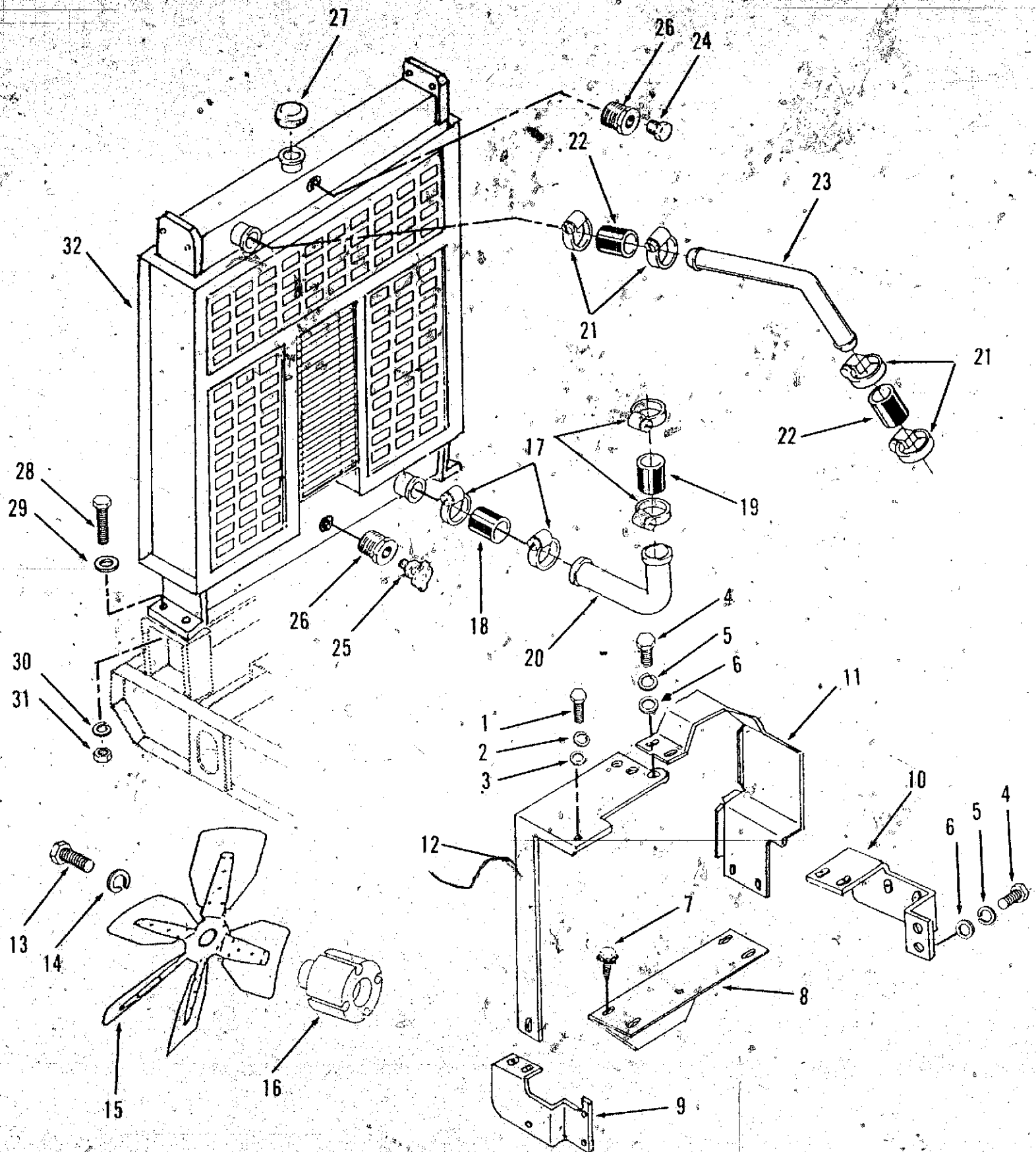
REF NO.	PART NO.	QTY USED	PART DESCRIPTION
12			Element, Air Cleaner
	140-2161	1	Primary
	140-2162	1	Secondary
13	821-0016	4	Screw, Self-locking - Hex Head (5/16-18 x 3/4")
14	870-0257	4	Nut, Lock (5/16-18)
15	140-0317	2	Band, Mounting
16	800-2110	4	Screw, Cap - Hex Head (M12 x .8 x 20mm)
17	850-2012	4	Washer, Lock - Spring (M12)
18	750-1010	1	Nut, Hex (M12)
20	140-2164	1	Bracket, Mounting
21	140-2163	1	Brace, Mounting

Electronic Governor



REF NO.	PART NO.	QTY USED	PART DESCRIPTION	REF NO.	PART NO.	QTY USED	PART DESCRIPTION
1	332-1445	5	Tie, Cable	11	526-0327	2	Washer, Flat (13/64)
2	150-2201	1	Sensor, Speed - Includes Leads, Less Terminals	12	870-0131	2	Nut, Hex - W/ET (#10-32)
3			Terminal, Electrical (For all Electrical Leads)	13	526-0008	2	Washer, Flat (#10)
	332-1279	8	Spade, #6	14	526-0196	3	Washer, Flat - Aluminum
	332-0325	1	Ring, #10	15	870-0053	2	Nut, Hex (#10-32)
	332-1087	1	Ring, 1/2"	16	150-2218-01	1	Rod - Governor
4	813-0103	4	Screw, Machine - Round Head (#10-32 x 3/4")	17	150-2200	2	Joint, Ball
5	870-0131	4	Nut, Hex - W/ET (#10-32) (Not used all installations)	18	150-2203	1	Lever, Actuator - Governor
6	151-0611	1	Control, Governor	19	800-0012	4	Screw, Cap - Hex Head (1/4-20 x 2 1/4")
7	800-2110	2	Screw, Cap - Hex Head (M12 x 1.75 x 20mm)	20	526-0018	4	Washer, Flat (1/4)
8	850-2012	2	Washer, Flat (M12)	21	870-0212	4	Nut, Self-Locking - Hex (1/4-20)
9	150-2007	1	Bracket, Mounting	22	151-0632	1	Actuator, Governor (24VDC)
10	815-0172	2	Screw, Machine - Hex Head (#10-32 x 1")	23	800-2060	3	Screw, Cap - Hex Head (M8 x 1.25 x 35mm)
				24	850-2008	3	Washer, Lock (M8)
				25	526-0115	3	Washer, Flat (M8)
				26	150-2187	1	Bracket, Governor

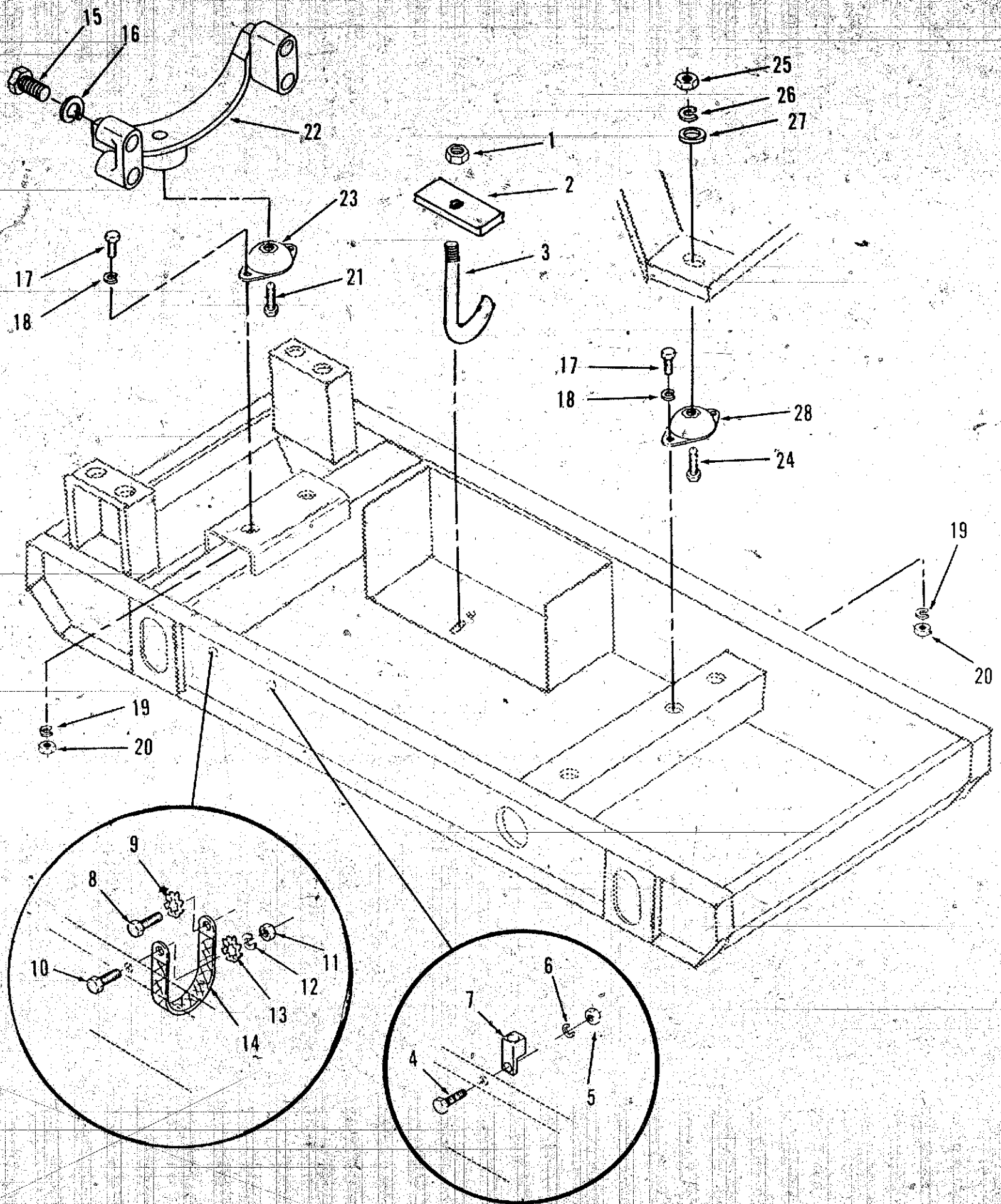
Cooling System (Radiator)



Cooling System (Radiator)

REF NO.	PART NO.	QTY USED	PART DESCRIPTION	REF NO.	PART NO.	QTY USED	PART DESCRIPTION
1	800-2084	1	Screw, Cap - Hex Head (M10 x 1.5 x 16mm)	15	130-3116	1	Fan, Radiator
2	526-2120	1	Washer, Flat (M10)	16	130-3114	1	Spacer, Fan
3	850-2010	1	Washer, Lock - Spring (M10)	17	503-0354	4	Clamp, Hose
4	800-2110	5	Screw, Cap - Hex Head (M12 x 1.75 x 20mm)	18	503-1379-02	1	Hose, Radiator
5	526-2140	5	Washer, Flat (M12)	19	503-1379-03	1	Hose, Radiator
6	850-2012	5	Washer, Lock - Spring (M12)	20		1	Tube, Outlet - Radiator
7	821-0009	9	Screw, Self-locking - Hex (1/4-20 x 3/8")	21	503-0365	4	Clamp, Hose
8	130-3121	1	Plate, Bottom	22	503-1391-01	2	Hose, Radiator
9	130-3122	1	Guard, Belt (Right Side)	23		1	Tube, Inlet - Radiator
10	130-3123	1	Guard, Belt (Left Side)	24	502-0153	1	Plug, Hex Head (1/4 NPT)
11	130-3127	1	Guard, Belt - Alternator	25	504-0003	1	Cock, Drain
12	130-3126	1	Guard, Belt - Alternator	26	502-1033	2	Adapter, Metric To NPT
13	718-1044	4	Screw, Cap - Hex Head (M8 x 1.25 x 60mm)	27		1	Cap, Radiator
14	850-2008	4	Washer, Lock - Spring (M8)	28	800-0028	4	Screw, Cap - Hex Head (5/16-18 x 1")
				29	526-0022	4	Washer, Flat (5/16)
				30	850-0045	4	Washer, Lock - Spring (5/16)
				31	862-0015	4	Nut, Hex (5/16-18)
				32	130-3277	1	Radiator

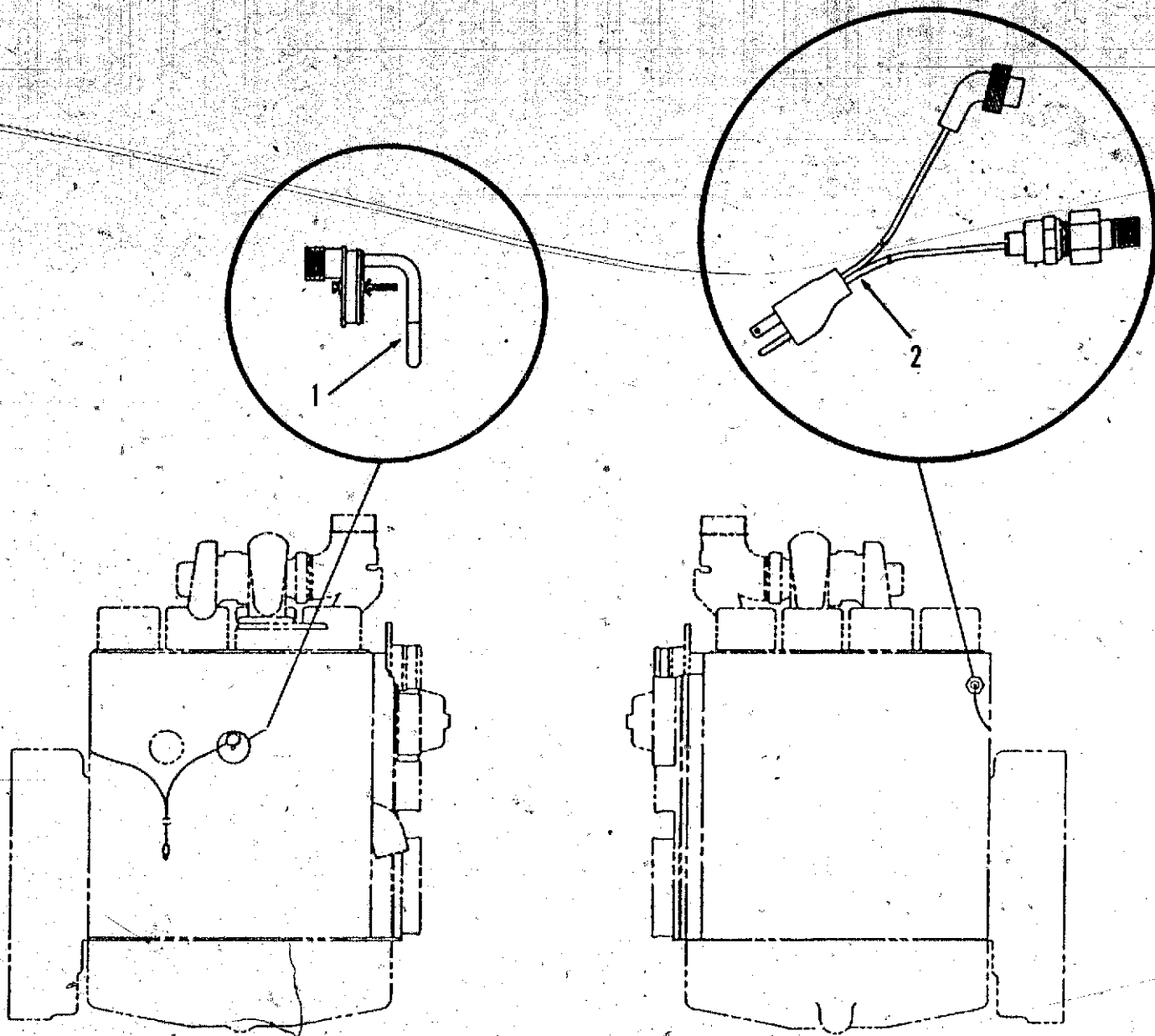
Chassis



Chassis

REF NO.	PART NO.	QTY USED	PART DESCRIPTION	REF NO.	PART NO.	QTY USED	PART DESCRIPTION
1	870-0212	1	Nut, Lock (1/4-20)	15	800-2120	4	Screw, Cap - Hex Head (M12 x 1.75 x 70mm)
2	416-0854	1	Bracket, Mounting - Battery	16	850-2012	5	Washer, Lock (M12)
3	416-0853	1	Holddown, Battery	17	800-0092	6	Screw, Cap - Hex Head (1/2-13 x 1-1/2")
4	800-0026	1	Screw, Cap - Hex Head (5/16-18 x 3/4")	18	850-0060	6	Washer, Lock - Spring (1/2")
5	856-0008	1	Washer, Lock - EIT (5/16)	19	526-0219	6	Washer, Flat (1/2")
6	870-0257	1	Nut, Lock (5/16-18)	20	862-0016	6	Nut, Hex (1/2-13)
7	332-1473	1	Lug, Solderless	21	800-0520	3	Screw, Cap - Hex Head (3/4-10 x 1")
8	800-2111	1	Screw, Cap - Hex Head (M12 x 1.75 x 25mm)	22	403-2567	1	Support, Engine
9	856-0013	1	Washer, Lock - EIT (1/2")	23	402-0568	1	Mount, Vibration
10	800-0092	1	Screw, Cap - Hex Head (1/2-13 x 1-1/2")	24	800-0092	2	Screw, Cap - Hex Head (1/2-13 x 1-1/2")
11	862-0016	1	Nut, Hex (1/2-13)	25	862-0016	2	Nut, Hex (1/2-13)
12	850-0060	1	Washer, Lock - Spring (1/2")	26	850-0060	2	Washer, Lock - Spring (1/2")
13	856-0013	1	Washer, Lock - EIT (1/2")	27	526-0219	2	Washer, Flat (1/2")
14	337-0090	1	Strap, Electrical	28	402-0466	2	Mount, Vibration

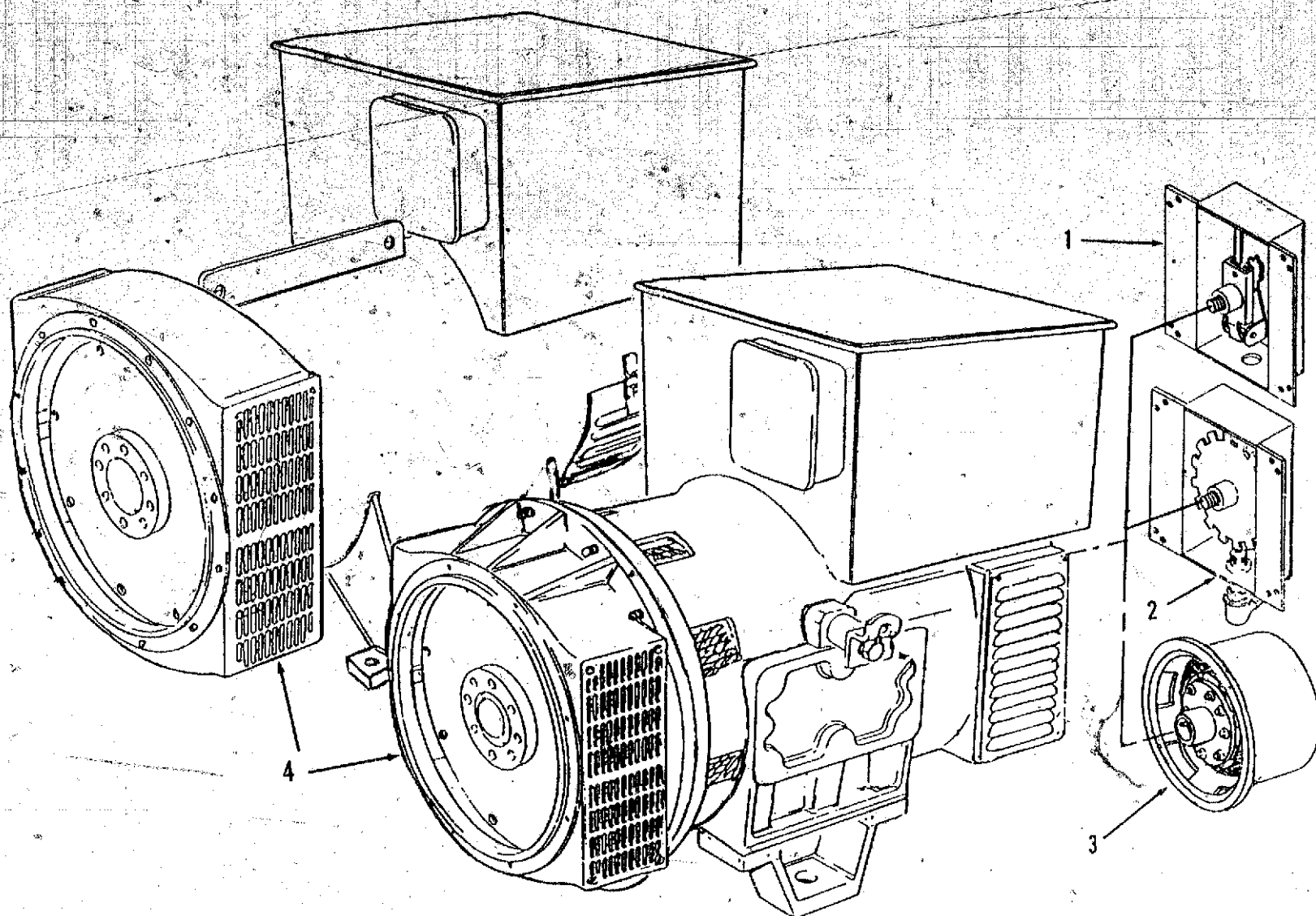
Engine Coolant Heater



REF NO.	PART NO.	QTY USED	PART DESCRIPTION
1			Heater, Engine Coolant
	333-0291-01	1	120 VAC
	333-0291-02	1	240 VAC

REF NO.	PART NO.	QTY USED	PART DESCRIPTION
2			Cable, Electrical (Includes Thermostat Switch)
	333-0292-01	1	120 VAC
	333-0292-02	1	240 VAC

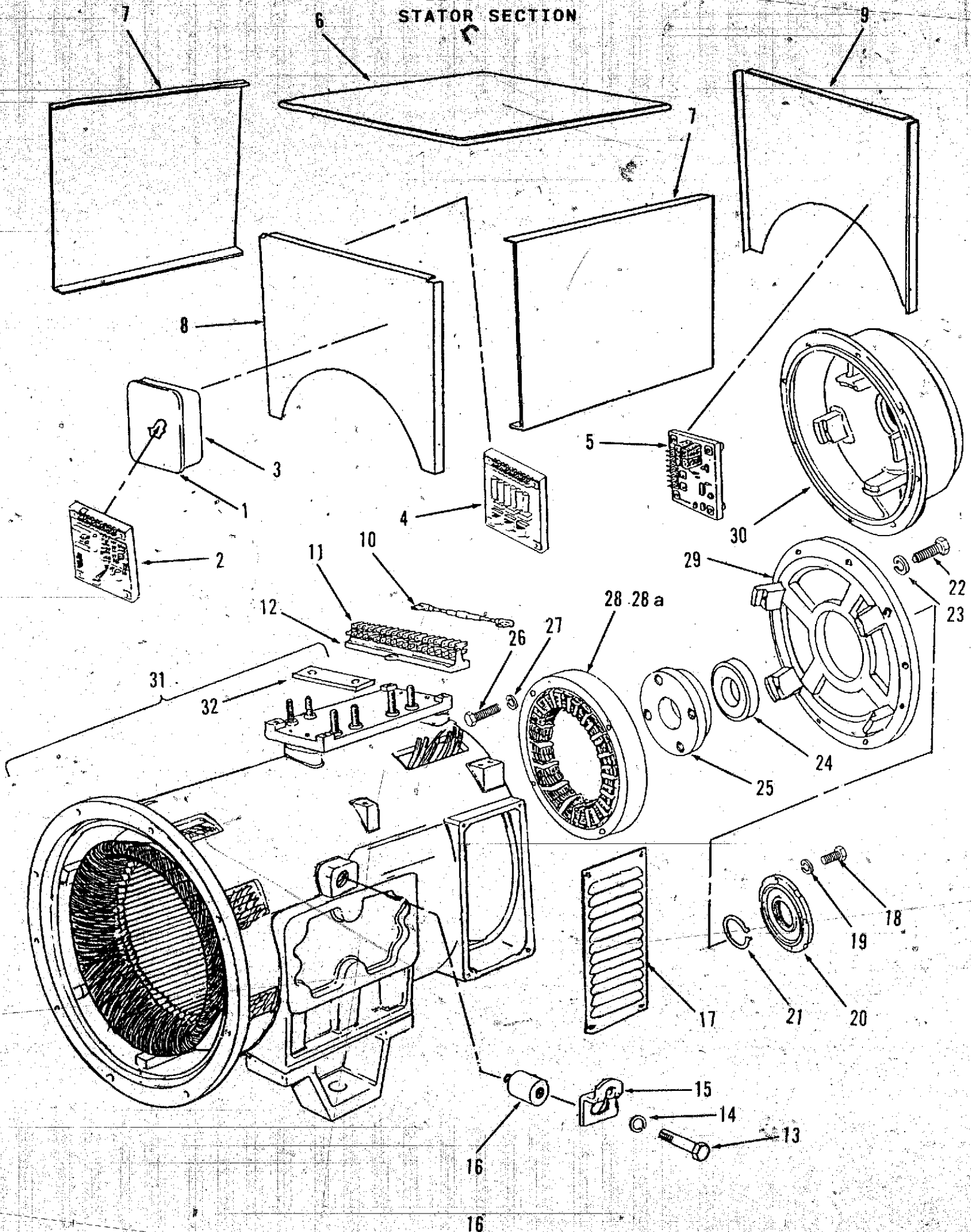
GENERATOR



REF NO.	PART NO.	QTY USED	PART DESCRIPTION	REF NO.	PART NO.	QTY USED	PART DESCRIPTION
1		1	Module, Overspeed Switch (See Separate Page for Components)	4	Note 1		Generator (See Separate Pages for Stator and Rotor Components)
	821-2045	4	Attaching Parts Screw, Self-locking - Hex Hd (M8 x 1.25 x 16mm)				Attaching Parts Generator to Chassis (Quantity four each may be required for some Extended Stack Sets)
2		1	Module, Overspeed Sensor (See Separate Page for Components)		800-0092	2	Screw, Cap - Hex Head (1/2-13 x 1-1/2")
	821-2045	4	Attaching Parts Screw, Self-locking - Hex Hd (M8 x 1.25 x 16mm)		850-0060	2	Washer, Lock - Spring (1/2")
					526-0219	2	Washer, Flat (1/2")
3		1	Module, Permanent Magnet Exciter (See Separate Page for Components)		862-0016	2	Nut, Hex (1/2-13)
	249-0298	4	Attaching Parts Screw, Cap - Hex Head (M8 x 16mm)		800-2088	12	Adapter to Flywheel Housing Screw, Cap - Hex Head (M10 x 1.5 x 35mm)
	249-0218	4	Washer, Lock (M8)		850-2010	12	Washer, Lock - Spring (M10)
	249-0315	4	Clamp, Retaining		805-0015	8	Drive Disc to Flywheel Bolt - Hex Head (3/8-16 x 3/4", Grade 8)
					526-0124	8	Washer, Flat (1-1/2" OD x 13/32" ID)

Note 1: For replacement Generator please supply the complete Gen Set nameplate and Generator nameplate data. The Replacement Generator will be shipped from closest warehouse or the factory. The replacement will not include PMG Exciter Module, Generator to Flywheel Housing Adapter, Drive Discs and Terminal Box.

GENERATOR STATOR SECTION



Generator Stator Section

REF NO.	PART NO.	QTY USED	PART DESCRIPTION	REF NO.	PART NO.	QTY USED	PART DESCRIPTION
1	249-0401	1	Lid	23	249-0218	6	Washer, Lock - Spring (M8)
	249-0304	4	Attaching Parts Screw, Captive	24	249-0311	1	Bearing, Ball
2	305-0779	1	Regulator, Voltage	25	249-0317	1	Cap, Bearing - Inner
	305-0778	1	Standard	26			Screw, Cap - Hex Head
			3 Phase (Used with		249-0296	4	(Select length as required)
			PMG Exciter & 3 Phase		249-0297	4	M6 x 45mm
			Sensing Module)	27	249-0212	4	M6 x 55mm
			Attaching Parts	28	249-0333	1	Washer, Lock - Spring (M6)
	249-0398	4	Pillar, Threaded				Stator, Exciter
3	249-0564	1	Module, 3 Phase Sensing				DTBA, DXBA Volt Codes H,L,Z
			Attaching Parts				DTBA, DXBA Voltage Code H
	249-0398	4	Pillar, Threaded				with Extended Stack
4	249-0395	1	Box				DTCA, DXCA Volt Codes H,L,Z
5	300-3209-02	1	Module, Frequency Detection				DTCB, DXCB Voltage Code H
			Attaching Parts	28a	249-0334	1	Stator, Exciter
	249-0296	4	Screw, Cap - Hex Head				DTBA, DXBA Volt Codes L,Z
			(M5 x 35mm)				with Extended Stack
	249-0288	4	Washer, Plastic (M5)				DTCA, DXCA Volt Codes H,L,Z
	249-0287	4	Nut, Hex - Nylon (M5)				with Extended Stack
6	NFS	1	Lid				DTCB, DXCB Volt Codes L,Z
7	NFS	2	Panel, Side				DTCB, DXCB Volt Code H
8	NFS	1	Panel, Front	29	249-0324	1	with Extended Stack
9	NFS	1	Panel, Rear				Bracket, End
10	249-0428	1	Resistor (Voltage Code				DTBA, DXBA Volt Codes H,L,Z
			H Only)				DTBA, DXBA Voltage Code H
11	249-0289	3	Block, Terminal				with Extended Stack
12	249-0424	1	Base, Terminal				DTCA, DXCA Volt Codes H,L,Z
13	249-0303	2	Screw, Cap - Hex Head				DTCB, DXCB Voltage Code H
			(M12 x 55mm)	30	249-0325	1	Bracket, End
14	249-0205	2	Washer, Lock - Spring (M12)				DTBA, DXBA Volt Codes L,Z
15	249-0318	2	Lug, lifting				with Extended Stack
16	249-0329	2	Spacer, Sleeve				DTCA, DXCA Volt Codes H,L,Z
17	249-0319	2	Grille, Inlet - Air				with Extended Stack
			Attaching Parts				DTCB, DXCB Volt Codes L,Z
	249-0294	8	Screw, Cap - Hex Head				DTCB, DXCB Volt Code H
			(M5 x 12mm)	31	NFS	1	with Extended Stack
	249-0307	8	Washer, lock - Spring (M5)				Stator, Generator (Includes
	249-0308	8	Washer, Flat (M5)				Terminal Studs and Links)
18	249-0301	3	Screw, Cap - Hex Head				Attaching Parts Stator to
			(M8 x 60mm)		249-0300	8	Adapter
19	249-0218	3	Washer, Lock - Spring (M8)				Screw, Cap - Hex Head
20	249-0326	1	Cap, Bearing - Outer		249-0218	8	(M8 x 30mm)
21	249-0309	1	Circlip				Washer, Lock - Spring (M8)
22	249-0299	6	Screw, Cap - Hex Head	32	249-0403	4	Link, Terminal
			(M8 x 25mm)				

NFS - Not For Sale

~~DTCB & DXCB Extended Stack Volt Code L & Z Only~~

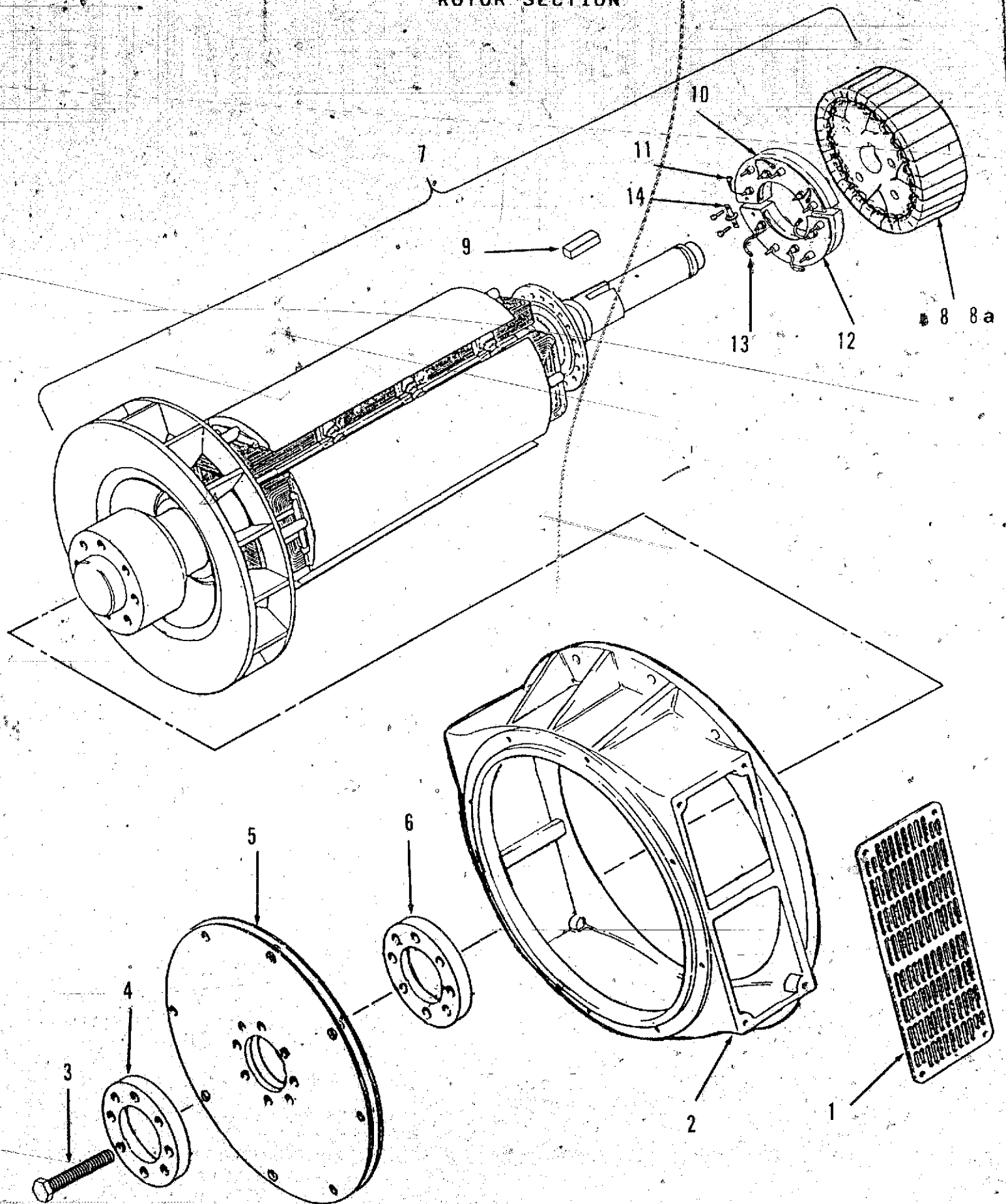


**Generator
Stator Section
DTCB & DXCB Extended Stack Volt Code L & Z Only**

REF NO.	PART NO.	QTY USED	PART DESCRIPTION	REF NO.	PART NO.	QTY USED	PART DESCRIPTION
1	249-0401	1	Lid	11	249-0289	3	Block, Terminal - AUX
	249-0304	4	Attaching Parts Screw, Captive	12	249-0424	1	Base, Terminal - AUX
2	305-0779	1	Regulator, Voltage	13	249-0368	2	Grille, Inlet - Air
	305-0778	1	Standard	14	249-0302	4	Screw, Cap - Hex Head (M10 x 65mm)
		1	3 Phase (Used with PMG Exciter & 3 Phase Sensing Module)	15	249-0202	4	Washer, Lock - Spring (M10)
			Attaching Parts	16	249-0362	1	Cap, Bearing - Outer
	249-0398	4	Pillar, Threaded	17	249-0444	1	Circlip
3	249-0564	1	Module, 3 Phase Sensing	18	249-0201	8	Screw, Cap - Hex Head (M10 x 35mm)
			Attaching Parts	19	249-0202	8	Washer, Lock - Spring (M10)
	249-0398	4	Pillar, Threaded	20	249-0312	1	Bearing, Ball
4	249-0395	1	Box	21	249-0361	1	Cap, Bearing - Inner
5	300-3209-02	1	Module, Frequency Detection	22	249-0297	4	Screw, Cap - Hex Head (M6 x 55mm)
			Attaching Parts	23	249-0212	4	Washer, Lock - Spring (M6)
	249-0295	4	Screw, Cap - Hex Head (M5 x 35mm)	24	249-0334	1	Stator, Exciter
	249-0288	4	Washer, Plastic (M5)	25	249-0354	1	Bracket, End
	249-0287	4	Nut, Hex - Nylon (M5)	27	NFS	1	Stator, Generator (Includes Terminal Studs and Links)
6	NFS	1	Lid				Attaching Parts Stator to Adapter
7	NFS	2	Panel, Side		249-0201	8	Screw, Cap - Hex Head (M10 x 35mm)
8	NFS	1	Panel, Front		249-0202	8	Washer, Lock - Spring (M10)
9	NFS	1	Panel, Rear	28	249-0404	4	Link, Terminal
10	249-0428	1	Resistor (Voltage Code H Only)				

NFS - Not For Sale

GENERATOR ROTOR SECTION

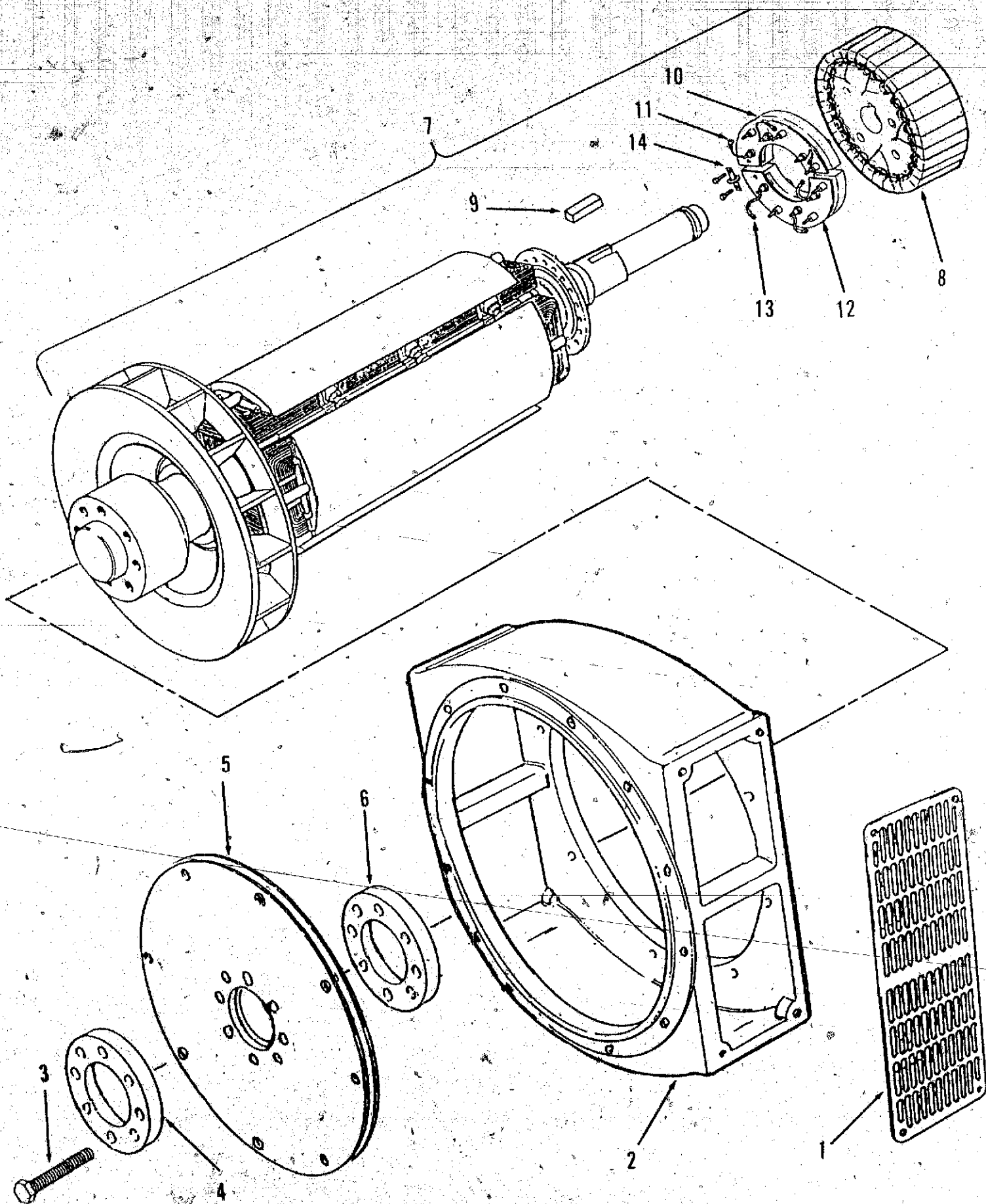


Generator Rotor Section

REF NO.	PART NO.	QTY USED	PART DESCRIPTION	REF NO.	PART NO.	QTY USED	PART DESCRIPTION
1	249-0338	2	Screen, Air - Adapter	8a	249-0336	1	Rotor, Exciter (Does Not
			Attaching Parts				Include Rectifier Assy)
	249-0294	8	Screw, Cap - Hex Head				DTBA, DXBA Volt Codes L,Z
			(M5 x 12mm)				with Extended Stack
	249-0307	8	Washer, Lock - Spring (M5)				DTCA, DXCA Volt Codes H,L,Z
	249-0308	8	Washer, Flat (M5)				with Extended Stack
2	249-0337	1	Adapter, Generator				DTCB, DXCB Volt Codes L,Z
3	249-0290	8	Screw, Cap - Hex Head				DTCB, DXCB Volt Code H
			(M16 x 75mm)				with Extended Stack
4	249-0402	1	Plate, Pressure	9	249-0271	1	Key
5	249-0327	2	Disc, Drive	10	249-0340	1	Rectifier Assy, Forward
6	249-0320	1	Spacer				(Includes Item 11 Diodes)
7	NFS	1	Rotor, Generator (Includes	11	249-0281	1	Set, Forward Polarity Diode
			Exciter, Key, and Rectifier	12	249-0341	1	Rectifier Assy, Reverse
			Assemblies)				(Includes Item 13 Diodes)
8	249-0335	1	Rotor, Exciter (Does Not	13	249-0282	1	Set, Reverse Polarity Diode
			Include Rectifier Assy)	14	249-0283	1	Varistor
			DTBA, DXBA Volt Codes H,L,Z				Attaching Parts
			DTBA, DXBA Voltage Code H		249-0294	2	Screw, Cap - Hex Head
			with Extended Stack				(M5 x 12mm)
			DTCA, DXCA Volt Codes H,L,Z				
			DTCB, DXCB Voltage Code H				

NFS - Not For Sale

**Generator
Rotor Section
DTCB & DXCB Extended Stack Volt Code L & Z Only**

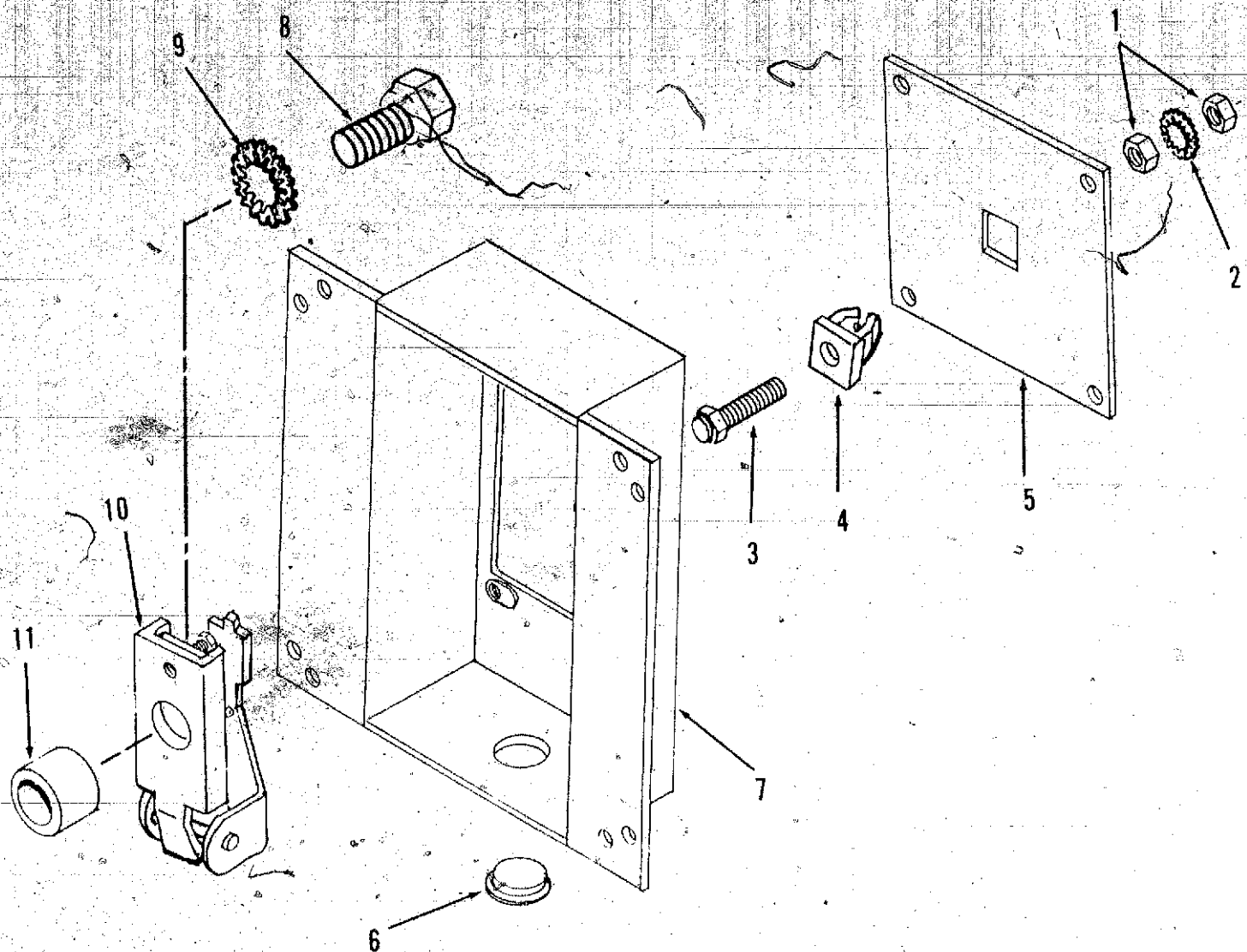


**Generator
Rotor Section
DTCB & DXCB Extended Stack Volt Code L & Z Only**

REF NO.	PART NO.	QTY USED	PART DESCRIPTION	REF NO.	PART NO.	QTY USED	PART DESCRIPTION
1	249-0341	2	Screen, Air - Adapter	8	249-0336	1	Rotor, Exciter (Does Not Include Rectifier Assy)
	249-0294	8	Attaching Parts Screw, Cap - Hex Head (M5 x 12mm)	9	249-0271	1	Key
	249-0307	8	Washer, Lock - Spring (M5)	10	249-0340	1	Rectifier Assy, Forward (Includes Item 11 Diodes)
	249-0308	8	Washer, Flat (M5)	11	249-0281	1	Set, Forward Polarity Diode
2	249-0370		Adapter, Generator	12	249-0341	1	Rectifier Assy, Reverse (Includes Item 13 Diodes)
3	249-0290	8	Screw, Cap - Hex Head (M16 x 75mm)	13	249-0282	1	Set, Reverse Polarity Diode
4	249-0402	1	Plate, Pressure	14	249-0283	1	Varister
5	249-0327	3	Disc, Drive		249-0294	2	Attaching Parts Screw, Cap - Hex Head (M5 x 12mm)
6	249-0364	1	Spacer				
7	NFS	1	Rotor, Generator (Includes Exciter, Key, and Rectifier Assemblies)				

NFS - Not For Sale

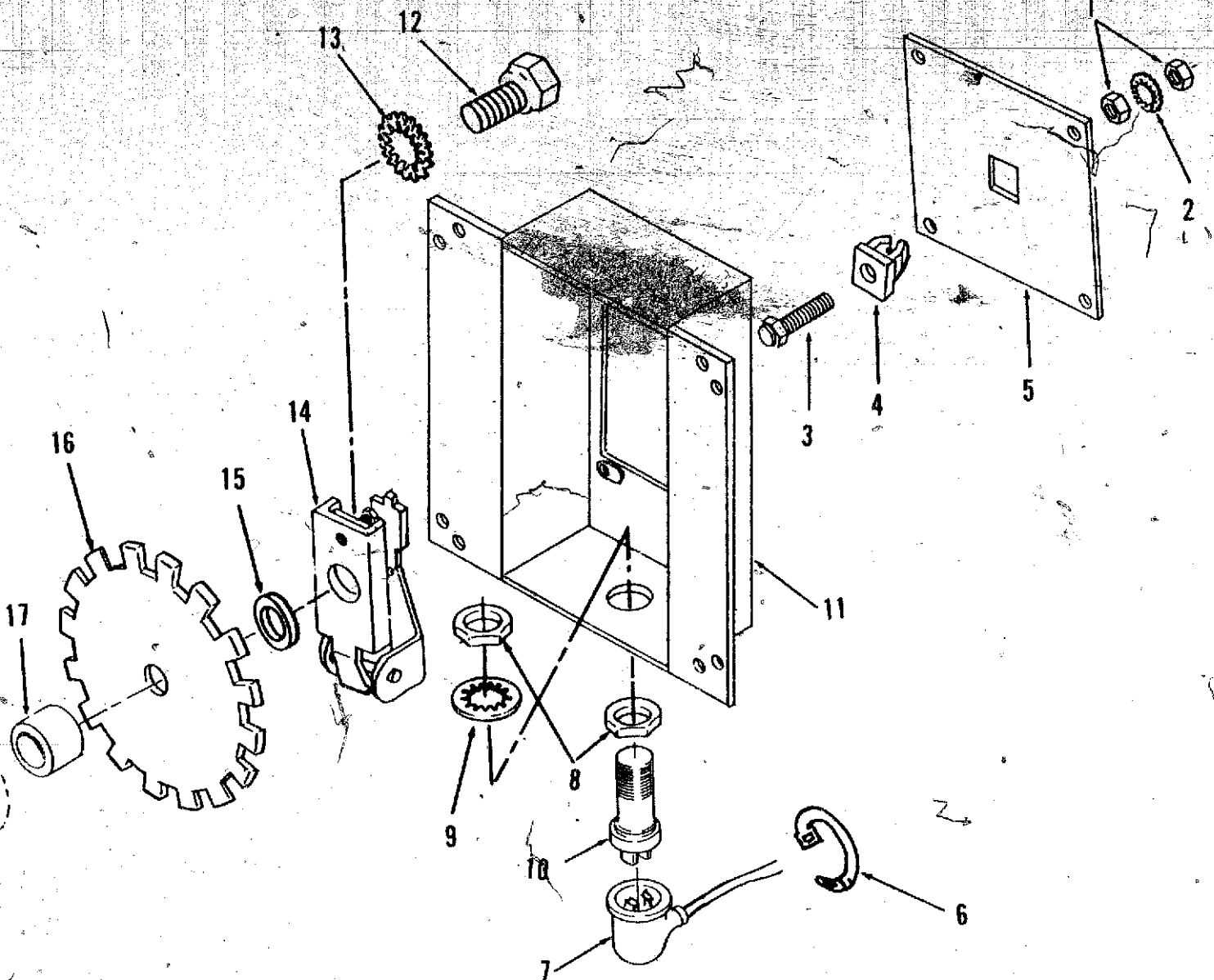
Generator Overspeed Switch



REF NO.	PART NO.	QTY USED	PART DESCRIPTION
1	862-0001	2	Nut, Hex (1/4-20)
2	853-0013	1	Washer, Lock - EIT (1/4")
3	150-0723	1	Point, Overspeed
4	870-0250	1	Nut, Insulated
5	150-2206	1	Plate, Mounting
	821-0005	4	Screw, Self-locking - Hex (#10-32 x 1/2")

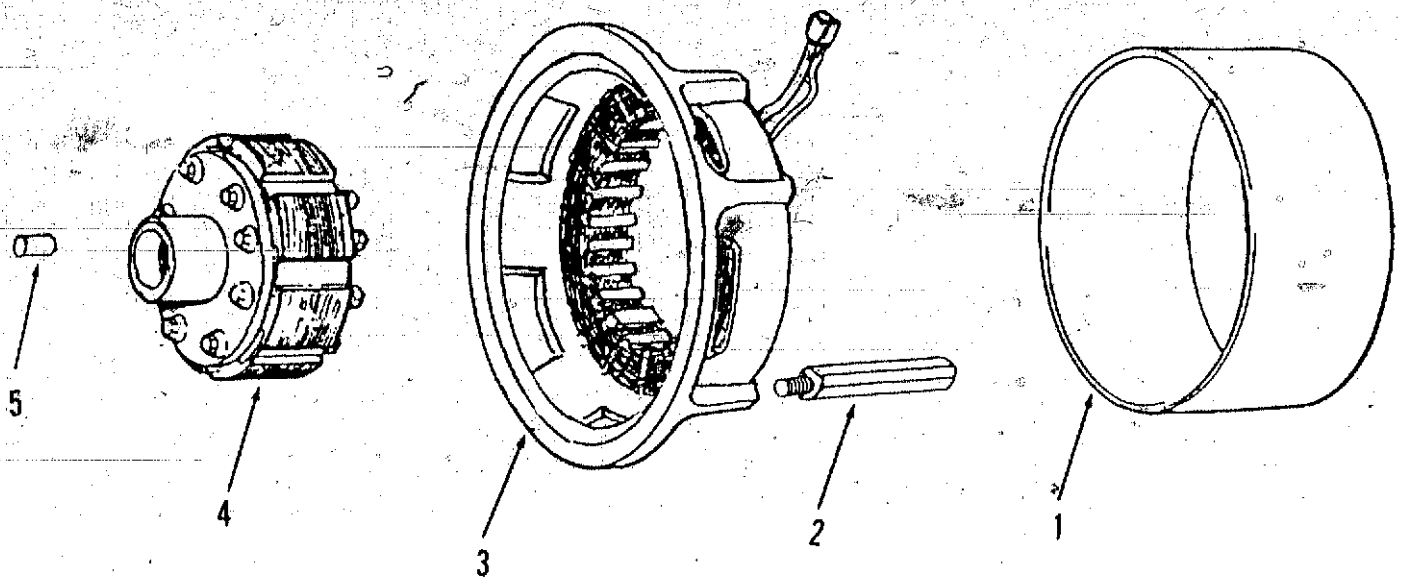
REF NO.	PART NO.	QTY USED	PART DESCRIPTION
6	517-0136	1	Plug, Plastic
7	150-2207	1	Cover, Overspeed Switch
8	718-1058	1	Screw, Cap - Hex Head (M10 x 1.5 x 45mm)
9	856-0010	1	Washer, Lock - EIT (3/8")
10	150-0956	1	Switch, Overspeed
11	370-4032	1	Spacer, Sleeve

Generator Overspeed Sensor



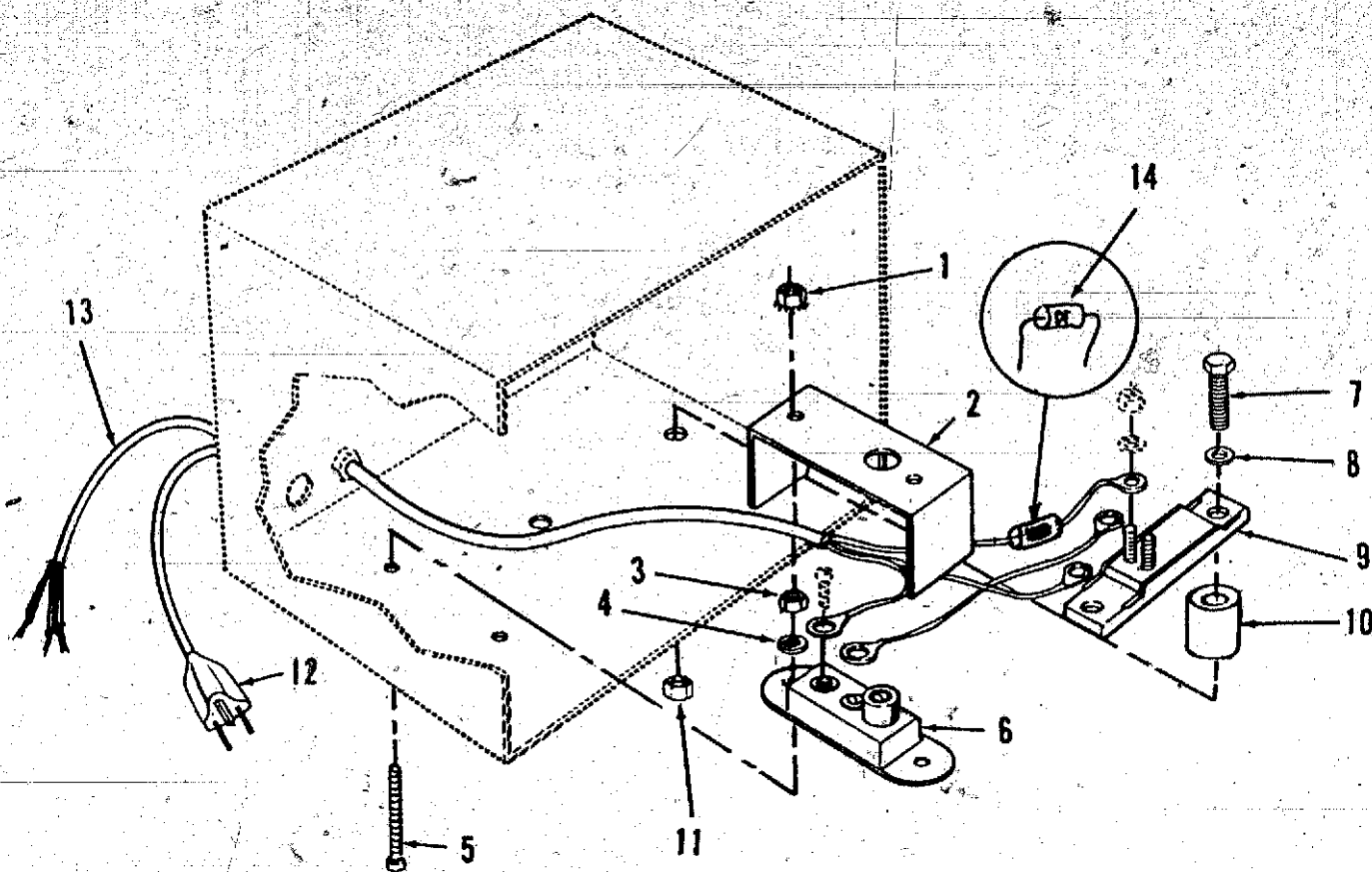
REF NO.	PART NO.	QTY USED	PART DESCRIPTION	REF NO.	PART NO.	QTY USED	PART DESCRIPTION
1	862-0001	2	Nut, Hex (1/4-20)	9	854-0031	1	Washer, Lock - IT (3/4")
2	853-0013	1	Washer, Lock - EIT (1/4")	10	150-1406	1	Sensor, Speed
3	150-0723	1	Point, Overspeed	11	150-2207	1	Cover, Overspeed Switch
4	810-0250	1	Nut, Insulated	12	718-1058	1	Screw, Cap - Hex Head (M10 x 1.5 x 45mm)
5	150-2206	1	Plate, Mounting	13	856-0010	1	Washer, Lock - EIT (3/8")
	821-0005	4	Screw, Self-locking - Hex (#10-32 x 1/2")	14	150-0956	1	Switch, Overspeed
6	332-1445	5	Tie, Cable	15	370-4031	1	Spacer, Sleeve
7	338-2189-02	1	Harness, Wiring	16	150-2204	1	Wheel - Speed Sensor
8	868-0011	2	Nut, Jam - Hex (3/4-16)	17	370-4032	1	Spacer, Sleeve

Generator Permanent Magnet Exciter



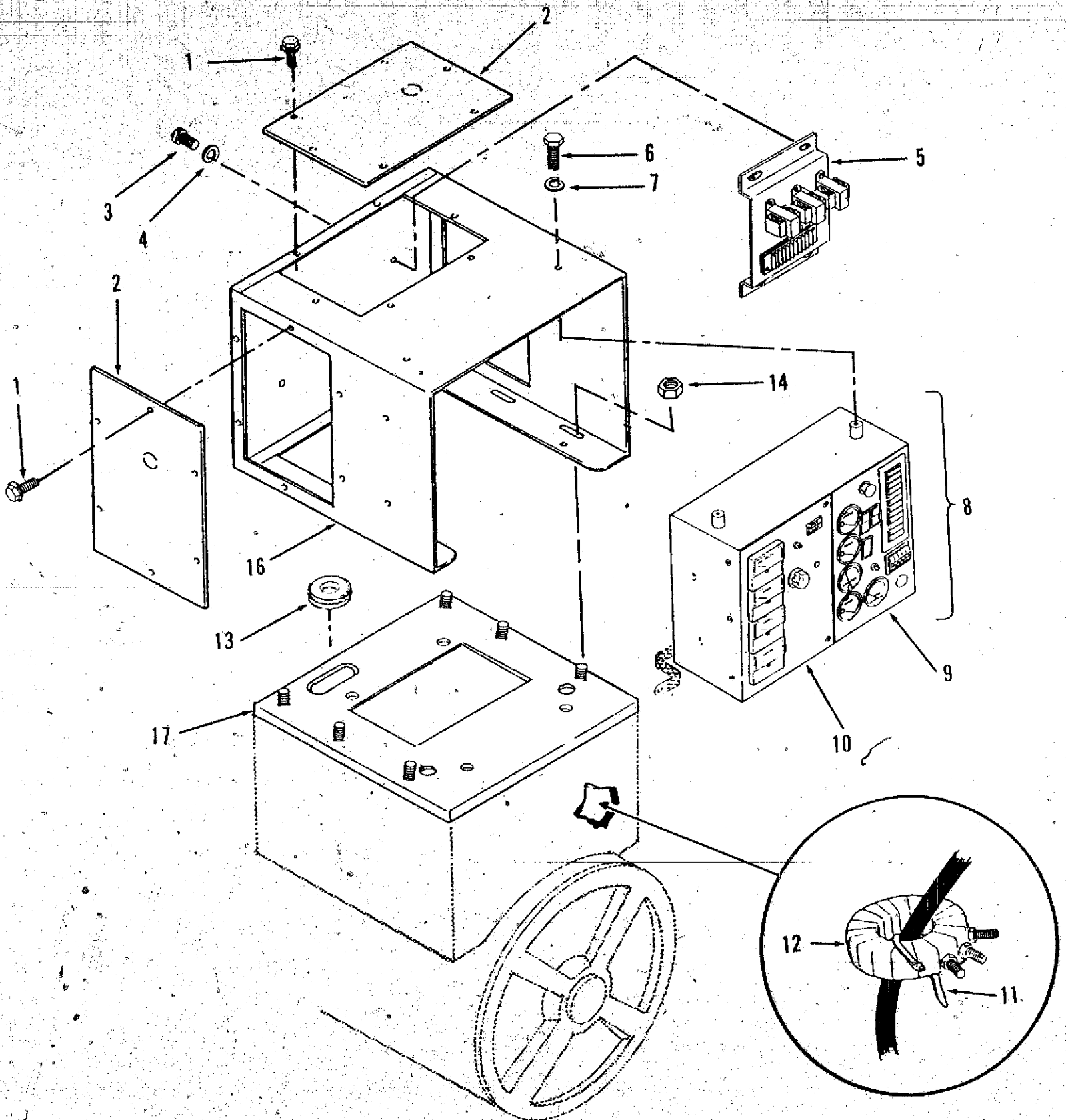
REF NO.	PART NO.	QTY USED	PART DESCRIPTION	REF NO.	PART NO.	QTY USED	PART DESCRIPTION
1	249-0422	1	Cover	3	249-0426	1	Stator, Exciter with Frame
	249-0294	3	Screw, Cap - Hex Head (M5 x 12mm)	4	249-0427	1	Rotor, Exciter
	249-0307	3	Washer, Lock (M5)		249-0399	1	Bolt
2	249-0423	3	Pillar, Threaded		249-0202	1	Washer, Lock (M10)
				5	249-0313	1	Pin, Dowel

Control Heater



REF NO.	PART NO.	QTY USED	PART DESCRIPTION	REF NO.	PART NO.	QTY USED	PART DESCRIPTION
1	870-0183	2	Nut, Self-locking - Hex (#6-32)	9	333-0151	1	Heater, Electrical 120VAC
2	301-1886	1	Cover		333-0378	1	240VAC
3	860-0006	1	Nut, Hex (#6-32)	10	130-1107	2	Spacer
4	854-0006	2	Washer, Lock - IT (#6)	11	870-0257	2	Nut, Self-locking - Hex (5/16-18)
5	812-0070	2	Screw, Machine - Round Head (#6-32 x 1-1/4")	12	335-0161	1	Cable, Electrical (120VAC Application)
6	309-0128	1	Thermostat, Adjustable	13	338-2121	1	Harness Wiring with Diode, less plug (240VAC Application)
7	800-0034	2	Screw, Cap - Hex Head (5/16-18 x 2-1/4")	14	357-0013	1	Diode
8	526-0113	2	Washer, Flat (5/16")	15	98-3232	1	Decal, Warning - Shock Hazard (Not Illustrated)

Generator Set Control

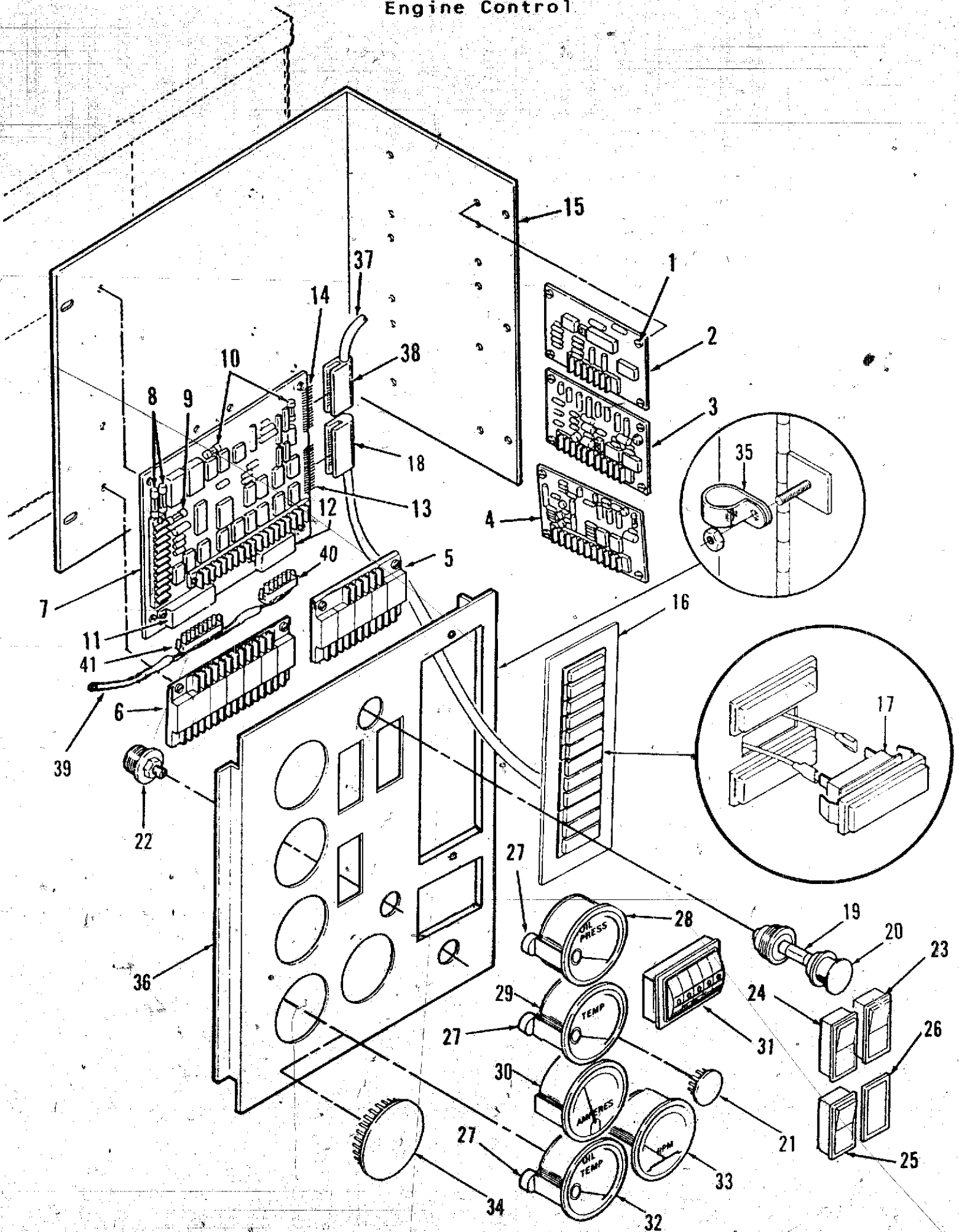


Generator Set Control

REF NO.	PART NO.	QTY USED	PART DESCRIPTION	REF NO.	PART NO.	QTY USED	PART DESCRIPTION
1	821-0005	18	Screw, Self-locking - Hex (#10-32 x 1/2")	10	NFS	1	Control, Generator (See Separate Page for Components)
2	NFS	3	Panel, Box - Control	11	332-0941	6	Tie, Cable
3	812-0156	4	Screw, Machine - Round Head (1/4-20 x 1/2")	12	302-1794-01	3	Transformer, Current
4	850-0040	4	Washer, lock - Spring (1/4")				35 & 40 kW Voltage Code L,
5	NFS	1	Transformer Assy. Potential (See Separate Page for Components)		302-1794-02	3	35 & 40 kW Voltage Code Z,
6	800-0051	4	Screw, Cap - Hex Head (5/16-18 x 1/2")				50 & 60 kW Voltage Code H,
7	850-0045	4	Washer, Lock - Spring (5/16")	13	508-0051	1	50 & 60 kW Voltage Code L,
8	NFS	1	Control, Set (See item 9 & 10 for Components)	14	870-0212	6	50 & 60 kW Voltage Code Z,
9	NFS	1	Control, Engine (See Separate Page for Components)	16	NFS	1	35 & 40 kW Voltage Code H,
				17	NFS	1	Grommet
							Nut, Self-locking - Hex (1/4-20)
							Housing, Control
							Adapter, Housing to Terminal Box

NFS - Not For Sale

Engine Control

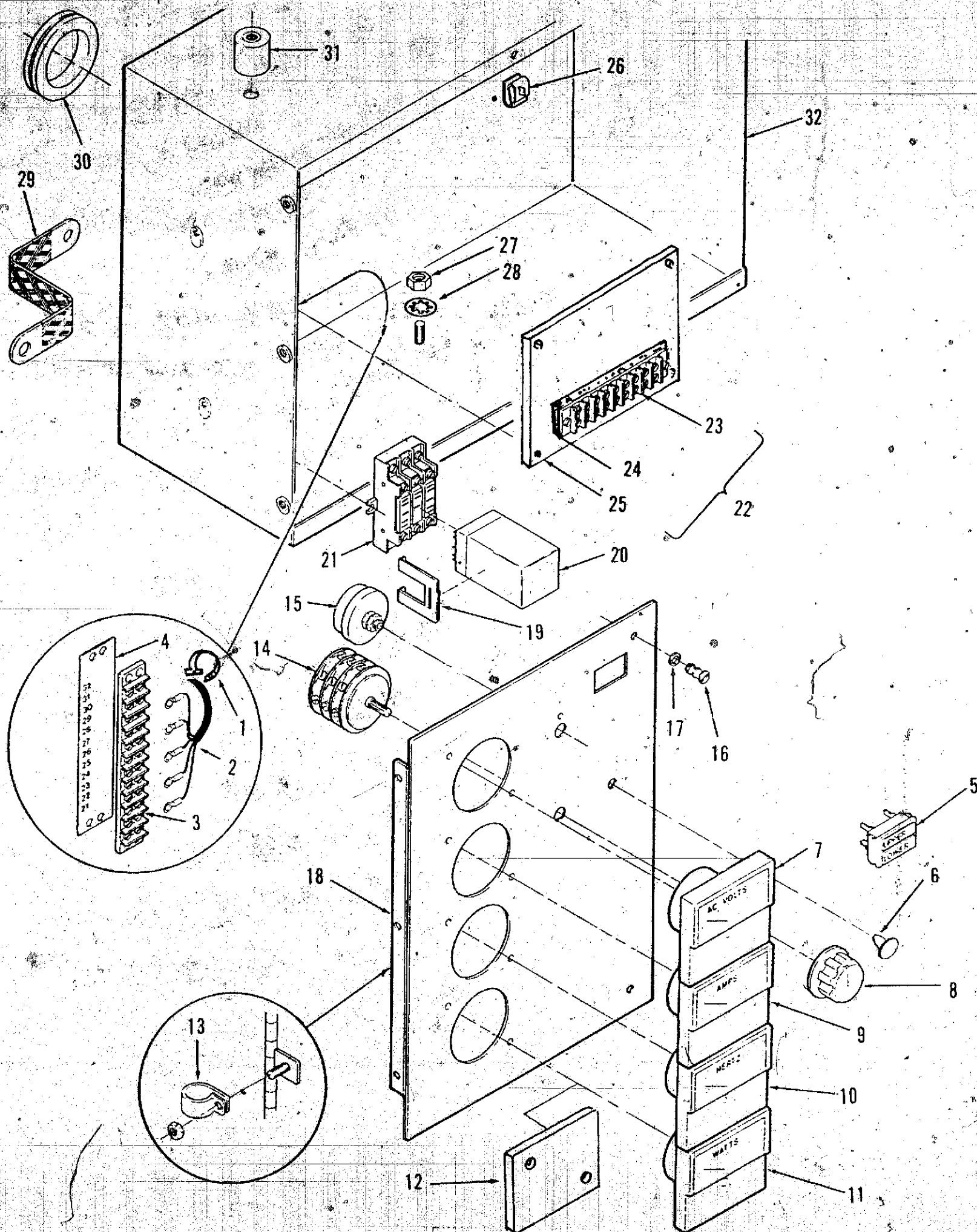


Engine Control

REF NO.	PART NO.	QTY USED	PART DESCRIPTION	REF NO.	PART NO.	QTY USED	PART DESCRIPTION
1	815-0544	24	Screw, Machine - Round Head With IT Lock Washer (#6-32 x 1/2")	17	322-0369-02	12	Lamp, Incandescent - 1/3 Watt 28 VDC
2	300-2899	1	Board, Time Delay, Start/Stop - 24 VDC (A15)	18	323-1310	1	Housing, 13 Pin (J3)
3			Board, Magnetic Sensor, Start Disconnect/Over Speed Sensor (A16)	19	322-0017	1	Contact, Pin
	300-2903	1	Standard	20	322-0361	1	Lamp, Incandescent - 28, VDC (DS11)
	300-2904	1	Precision	21	517-0131	1	Holder, Lamp
4	300-2906	1	Board, Over-Under Voltage Sensor - 24 VDC (A17)	22	303-0280	1	Plug, Button
5	300-2856	1	Board, Relay - 24 VDC (A13)	23	308-0785	1	Potentiometer (R11)
6	300-2863	1	Board, Relay - 24 VDC (A14)	24	308-0784	1	Switch, Push (S11)
7			Board, Engine Monitor (A11) (Includes Fuses and Connectors)	26	301-6257	1	Switch, Push (S12)
	300-2808	1	24 VDC, 2 Light	27	193-0250	1	Cover
	300-2812	1	24 VDC, 12 Light	28	193-0352	3	Resistor - Gauge (R12)
8	321-0270	2	Fuse, Cartridge - 20 Amp (F1, F2)	29	193-0351	1	Gauge, Pressure - Oil (M11)
9	321-0231	1	Fuse, Cartridge - 15 Amp (F3)	30	302-1790	1	Gauge, Temperature - Water (M12)
10	321-0094	2	Fuse, Cartridge - 5 Amp (F4, F5)	31	302-0885	1	Ammeter (M13)
11	323-1305	1	Connector, 8 Pin (P1)		815-0385	1	Meter, Totalizing - Time (M14)
12	323-1303	1	Connector, 6 Pin (P2)		870-0183	2	Screw, Machine - Round Head (#6-31 x 1/2")
13	323-1309	1	Connector, 13 Pin (P3)	32	193-0330	2	Nut, Hex with ET Lockwasher (#6-32)
14	323-1307	1	Connector, 12 Pin (P4)	33	302-1715	1	Gauge, Temperature - Oil (M15)
15	NFS	1	Bracket, Mounting [301-8851]	34	517-0221	1	Tachometer (M16)
	821-0004	4	Screw, Self-locking - Hex Hd (#10-32 x 5/16")	35	322-0052	1	Plug, Button
16			Module, Indicator - Fault (Includes replaceable lamps, Harness with connector housing & contact pins)(A12)		870-0131	1	Clamp, Loop
	322-0358-02	1	24 VDC, 2 Light	36	NFS	1	Nut, Hex with ET Lockwasher (#10-32 x 1/2")
	322-0360-02	1	24 VDC, 12 Light	37	338-1817	1	Door, Control [301-9055-01]
	815-0385	2	Screw, Machine - Round Head (#6-32 x 1/2")	38	323-1308	1	Harness, Wiring - DC Meter (Includes Connector & Pins)
	870-0183	2	Nut, Self-locking - Hex (#6-32)	39	323-1302	12	Housing, 12 Pin (J4)
					323-1302	1	Contact, Pin
				40	323-1304	1	Harness, Wiring - Control to Engine (Includes Connectors and Pins)
				41	323-1200	6	Housing, 6 Pin
					323-1200	1	Contact, Pin
					323-1200	8	Housing, 8 Pin
							Contact, Pin

NFS - Not For Sale

Generator Control

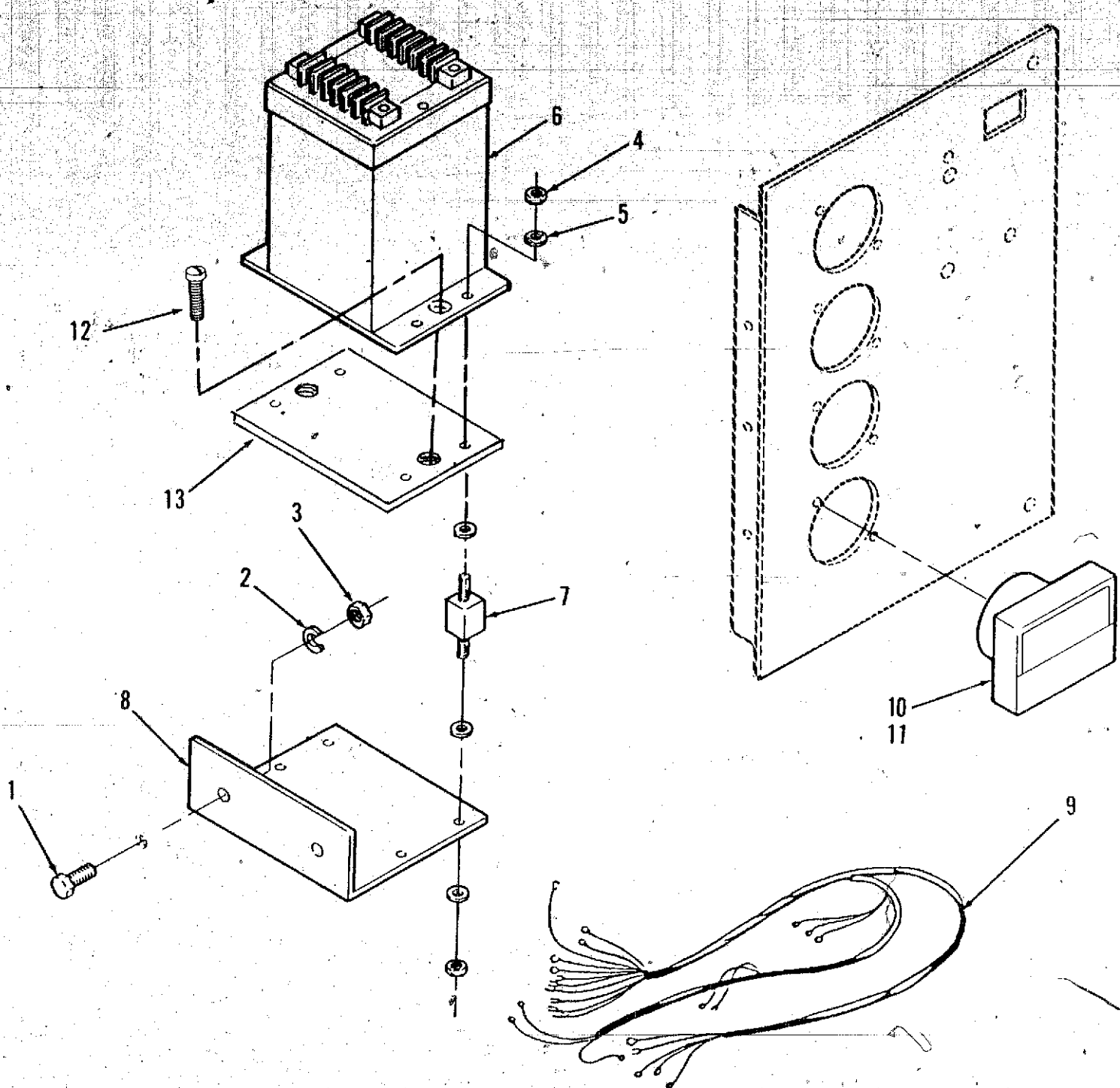


Generator Control

REF. NO.	PART NO.	QTY USED	PART DESCRIPTION	REF. NO.	PART NO.	QTY USED	PART DESCRIPTION
1	332-1445	2	Tie, Cable	14	308-0284	1	Switch, Rotary (S21)
2	338-1818	1	Harness, Wiring	15	303-0261	1	Rheostat (R21)
	338-1853	1	Control with Meters	16	406-0334	2	Clip, Fastener
	812-0065	2	(Includes Terminal Block)	17	406-0333	2	Stud, Fastener
			Control without Meters	18	NFS	1	Door, Control
			Screw, Machine - Round Head		821-0004	3	Screw, Self-locking - Hex
			(#6-32 x 5/8")				(#10-32 x 5/16")
3	332-0607	1	Block, Terminal (TB1)	19	307-1987	2	Clip, Relay
4	332-2723	1	Strip, Marker	20	307-1056	1	Relay, 24 VDC (K21)
5	322-0363	1	Light, Indicator - Dual	21	323-0804	1	Socket, Relay
			(DS21, DS22)		815-0544	2	Screw, Machine - Round Head
6	517-0131	1	Plug, Button				with IT Lock Washer
7			Voltmeter (M21)				(#6-32 x 1/2")
	302-1148	1	Dual Scale 0-300/0-600V	22	NFS	1	Terminal Board Assembly
	302-1753	1	Single Scale 0-750V		812-0065	4	Screw, Machine - Round Head
8	303-0032	1	Knob				(#6-32 x 5/8")
9			Ammeter (M22)	23	332-0751	1	Block, Terminal
			Single Scale Voltage Code H		812-0066	2	Screw, Machine - Round Head
	302-1298	1	40kW, 0-50 Amp				(#6-32 x 3/4")
	302-1757	1	50 & 60kW, 0-75 Amp	24	332-0853	1	Strip, Marker
			Dual Scale Volt. Codes L & Z	25	NFS	1	Plate
	302-1147	1	35 & 40kW, 0-75/0-150 Amp	26	406-0332	2	Receptacle, Fastener
	302-1683	1	50kW, 0-100/0-200 Amp	27	871-0015	1	Nut, Hex (1/4-20)
	302-1684	1	60kW, 0-150/0-300 Amp	28	853-0013	1	Washer, Lock - ET (1/4")
10	302-1720	1	Meter, Frequency (M23)	29	337-0049	1	Strap, Electrical (Ground)
11		1	Wattmeter (M24) (See		800-0024	1	Screw, Cap - Hex Head
			Separate page for Components)				(5/16-18 x 1/2")
12	NFS	1	Cover, Meter Hole		856-0008	1	Washer, Lock - EIT (5/16")
	815-0385	2	Screw, Machine - Round Head,	30	508-0051	1	Grommet
			Black (#6-32 x 1/2")	31	402-0527	2	Mount, Vibration
	870-0183	2	Nut, Hex with ET Lockwasher		800-0051	4	Screw, Cap - Hex Head
			(#6-32)				(5/16-18 x 1/2")
13	332-0052	1	Clamp, Loop		850-0045	4	Washer, Lock - Spring
	870-0131	1	Nut, Self-locking - Hex with				(5/16")
			ET Lock Washer (#10-32)	32	NFS	1	Box, Control

NFS - Not For Sale

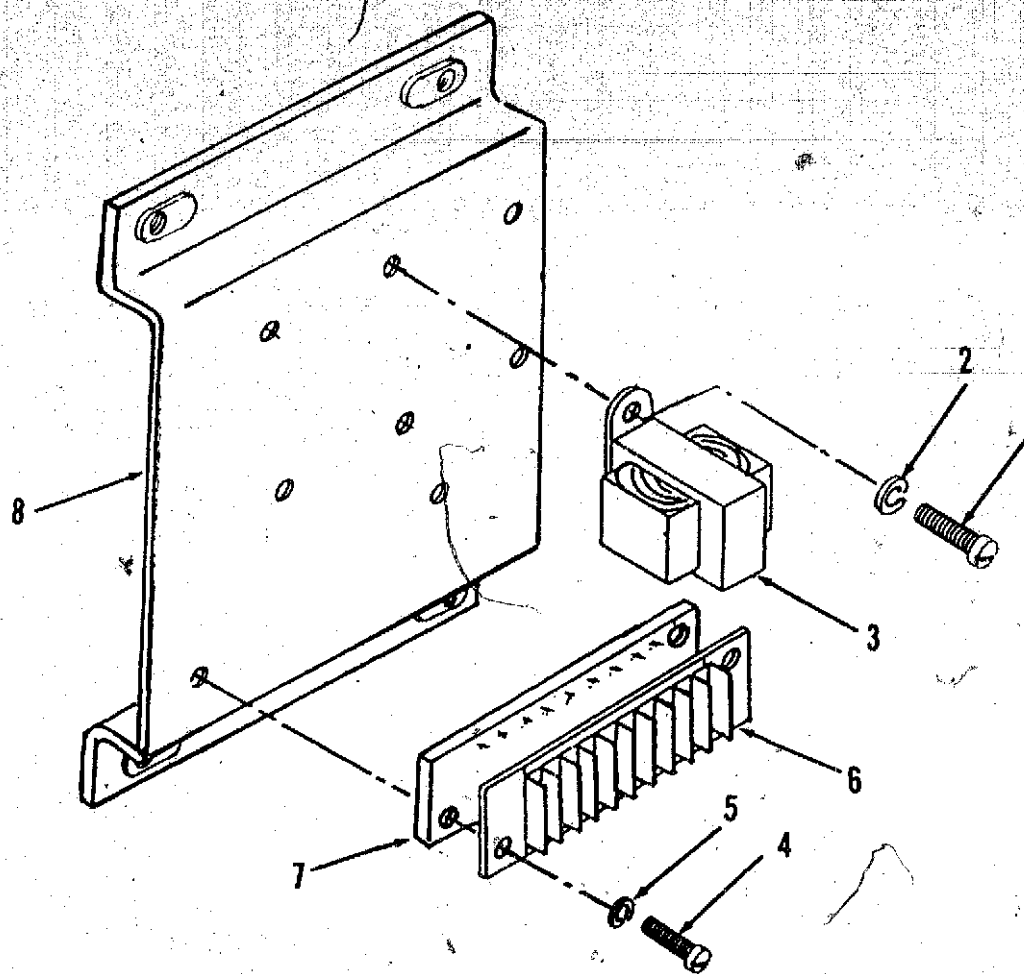
Wattmeter



REF NO.	PART NO.	QTY USED	PART DESCRIPTION
1	821-0017	2	Screw, Cap - Hex Head (5/16-18 x 1/2")
2	850-0045	2	Washer, Lock (5/16)
3	862-0014	2	Nut, Hex (5/16-18)
4	860-0008	8	Nut, Hex (#8-32)
5	856-0002	16	Washer, Lock - ET (#8)
6	302-1833-01	1	Transducer, Watt
7	402-0354	4	Mount, Shock

REF NO.	PART NO.	QTY USED	PART DESCRIPTION
8	301-6987	1	Bracket, Mounting
9	338-1936	1	Harness, Wiring
10	302-1722	1	Wattmeter (Less Dial)
11			Dial, Wattmeter
	302-1721-01	1	DTBA, DXBA
	302-1721-02	1	DTCA, DTCB, DXCA, DXCB
12	813-0102	2	Screw, Machine - Round Head (#10-32 x 3/8")
13	319-0030	1	Plate, Support - Transducer

Potential Transformer



REF NO.	PART NO.	QTY USED	PART DESCRIPTION
1	812-0079	6	Screw, Machine - Round Head (#8-32 x 1/2")
2	850-0025	6	Washer, Lock - Spring (#8)
3	315-0642	3	Transformer, Potential
4	812-0077	2	Screw, Machine - Round Head (#8-32 x 3/8")

REF NO.	PART NO.	QTY USED	PART DESCRIPTION
5	850-0025	2	Washer, Lock - Spring (#8)
6	332-2562	1	Block, Terminal (10 Place)
7	332-2563	1	Strip, Marker
8	NFS	1	Bracket, Mounting

NFS - Not For Sale

Numerical Index

Part No.	Page	Part No.	Page	Part No.	Page	Part No.	Page
98-3232	27	150-2201	9	249-0289	17	249-0338	21
102-1147	3	150-2203	9	249-0289	19	249-0340	21
102-1237	3	150-2204	25	249-0290	21	249-0340	23
130-1107	27	150-2206	24	249-0290	23	249-0341	21
130-3114	11	150-2206	25	249-0294	17	249-0341	23
130-3116	11	150-2207	24	249-0294	21	249-0354	19
130-3121	11	150-2207	25	249-0294	23	249-0361	19
130-3122	11	150-2218-01	9	249-0294	26	249-0362	19
130-3123	11	151-0611	9	249-0295	17	249-0364	23
130-3126	11	151-0632	9	249-0295	19	249-0368	19
130-3127	11	154-2253	5	249-0296	17	249-0370	23
130-3277	11	154-2581	4	249-0297	17	249-0395	17
140-0078	6	154-2581	5	249-0297	19	249-0395	19
140-0078	7	154-2706	4	249-0298	15	249-0398	17
140-0317	8	154-2708	4	249-0299	17	249-0398	17
140-1260	6	155-2062-01	4	249-0300	17	249-0398	19
140-1260	7	155-2062-01	5	249-0301	17	249-0399	26
140-1260	8	155-2080	4	249-0302	19	249-0401	17
140-1435	8	155-2080	5	249-0303	17	249-0401	19
140-1548	6	155-2175	5	249-0304	17	249-0402	21
140-1548	7	155-2256	5	249-0304	19	249-0402	23
140-1548	8	155-2257	4	249-0307	17	249-0403	17
140-1864	6	187-0146	3	249-0307	21	249-0404	19
140-2157	6	193-0244	3	249-0307	23	249-0422	26
140-2157	7	193-0250	31	249-0307	26	249-0423	26
140-2158	6	193-0330	31	249-0308	17	249-0424	17
140-2158	7	193-0351	31	249-0308	21	249-0424	19
140-2159	6	193-0352	31	249-0308	23	249-0426	26
140-2159	7	193-0353	3	249-0309	17	249-0427	26
140-2160	8	193-0375	3	249-0311	17	249-0428	17
140-2161	8	249-0201	19	249-0312	19	249-0428	19
140-2162	8	249-0202	19	249-0313	26	249-0444	19
140-2163	7	249-0202	26	249-0315	15	249-0564	17
140-2163	8	249-0205	17	249-0317	17	249-0564	19
140-2164	7	249-0212	17	249-0318	17	300-2808	31
140-2164	8	249-0212	19	249-0319	17	300-2812	31
140-2166	7	249-0218	15	249-0320	21	300-2856	31
140-2168	8	249-0218	17	249-0324	17	300-2863	31
140-2177	6	249-0271	21	249-0325	17	300-2899	31
140-2178	6	249-0271	23	249-0326	17	300-2903	31
140-2179	6	249-0281	21	249-0327	21	300-2904	31
145-0596	3	249-0281	23	249-0327	23	300-2906	31
150-0723	24	249-0282	21	249-0329	17	300-3209-02	17
150-0723	25	249-0282	23	249-0333	17	300-3209-02	19
150-0956	24	249-0283	21	249-0337	21	301-1886	27
150-0956	25	249-0283	23	249-0334	17	301-6257	31
150-1406	25	249-0287	17	249-0334	19	301-6987	34
150-2007	9	249-0287	19	249-0335	21	302-0885	31
150-2187	9	249-0288	17	249-0336	21	302-1147	33
150-2200	9	249-0288	19	249-0336	23	302-1148	33

Numerical Index

Part No.	Page	Part No.	Page	Part No.	Page	Part No.	Page
302-1298	33	323-1306	31	406-0334	33	526-0124	15
302-1683	33	323-1307	31	416-0446	3	526-0196	9
302-1684	33	323-1308	31	416-0619	3	526-0219	13
302-1715	31	323-1309	31	416-0853	13	526-0219	13
302-1720	33	323-1310	31	416-0854	13	526-0219	15
302-1721-01	34	332-0052	33	416-0893	3	526-0327	9
302-1721-02	34	332-0325	9	501-0441	3	526-2120	6
302-1722	34	332-0607	33	501-0502	3	526-2120	11
302-1753	33	332-0751	33	502-0153	11	526-2140	6
302-1757	33	332-0853	33	502-1033	11	526-2140	11
302-1790	31	332-0941	3	503-0098	3	718-1044	11
302-1794-01	29	332-0941	29	503-0197	3	718-1058	24
302-1794-02	29	332-1087	9	503-0354	11	718-1058	25
302-1833-01	34	332-1279	9	503-0365	11	750-1010	7
303-0032	33	332-1445	9	503-0685	3	750-1010	8
303-0261	33	332-1445	25	503-0868	6	800-0012	9
303-0280	31	332-1445	33	503-0868	7	800-0024	33
305-0778	17	332-1473	13	503-0868	8	800-0026	13
305-0778	19	332-2562	35	503-0998	7	800-0028	11
305-0779	17	332-2563	35	503-0999	6	800-0034	27
305-0779	19	332-2723	33	503-0999	7	800-0051	29
307-1056	33	332-2739	3	503-1379-02	11	800-0051	33
307-1987	33	332-2921	3	503-1379-03	11	800-0092	13
308-0284	33	333-0151	27	503-1391-01	11	800-0092	15
308-0784	31	333-0291-01	14	503-1460	8	800-0520	13
308-0785	31	333-0291-02	14	503-1467	8	800-2060	3
309-0128	27	333-0292-01	14	503-1520	6	800-2060	9
309-0169	3	333-0292-02	14	503-1542	7	800-2084	6
309-0269	3	333-0378	27	503-1543	7	800-2084	11
309-0272	3	335-0161	27	504-0003	11	800-2086	4
309-0553	3	337-0049	33	504-0011	3	800-2088	15
309-0554	3	337-0090	13	505-0026	3	800-2110	3
315-0642	35	338-1817	31	505-0059	3	800-2110	6
319-0030	34	338-1818	33	505-0098	3	800-2110	7
321-0094	31	338-1853	33	505-0104	3	800-2110	8
321-0231	31	338-1936	34	505-0185	3	800-2110	9
321-0270	31	338-2121	27	505-0248	3	800-2110	11
322-0017	31	338-2166	31	505-1373	3	800-2111	13
322-0052	31	338-2189-02	25	508-0051	29	800-2112	3
322-0358-02	31	357-0013	27	508-0051	33	800-2120	13
322-0360-02	31	370-4031	25	517-0131	31	805-0015	15
322-0361	31	370-4032	24	517-0131	33	812-0065	33
322-0363	33	370-4032	25	517-0136	24	812-0066	33
322-0369-02	31	402-0354	34	517-0221	31	812-0070	27
323-0804	33	402-0466	13	526-0008	3	812-0075	3
323-1200	31	402-0527	33	526-0008	9	812-0077	35
323-1302	31	402-0568	13	526-0018	9	812-0079	35
323-1303	31	403-2567	13	526-0022	11	812-0156	29
323-1304	31	406-0332	33	526-0113	27	813-0102	34
323-1305	31	406-0333	33	526-0115	9	813-0103	9

Numerical Index

Part No.	Page	Part No.	Page	Part No.	Page	Part No.	Page
815-0115	6	854-0031	25				
815-0115	7	856-0002	34				
815-0115	8	856-0008	13				
815-0172	9	856-0008	33				
815-0385	31	856-0010	24				
815-0385	31	856-0010	25				
815-0385	33	856-0013	3				
815-0544	31	856-0013	13				
815-0544	33	860-0006	27				
821-0004	31	860-0008	34				
821-0004	33	860-2007	3				
821-0005	24	862-0001	24				
821-0005	25	862-0001	25				
821-0005	29	862-0014	34				
821-0009	11	862-0015	11				
821-0016	8	862-0016	13				
821-0017	34	862-0016	15				
821-0029	6	863-0002	6				
821-0029	7	863-0002	7				
821-2045	15	863-0002	8				
850-0025	3	868-0011	25				
850-0025	35	870-0053	9				
850-0030	3	870-0131	9				
850-0040	29	870-0131	31				
850-0045	11	870-0131	33				
850-0045	29	870-0183	27				
850-0045	33	870-0183	31				
850-0045	34	870-0183	33				
850-0050	3	870-0212	9				
850-0060	13	870-0212	13				
850-0060	15	870-0212	29				
850-2006	3	870-0250	24				
850-2008	3	870-0250	25				
850-2008	9	870-0257	8				
850-2008	11	870-0257	13				
850-2010	4	870-0257	27				
850-2010	6	870-0281	6				
850-2010	11	870-0281	7				
850-2010	15	871-0010	3				
850-2012	3	871-0015	33				
850-2012	6	871-0028	3				
850-2012	7						
850-2012	8						
850-2012	9						
850-2012	11						
850-2012	13						
853-0013	24						
853-0013	25						
853-0013	33						
854-0006	27						