



Parts Catalog

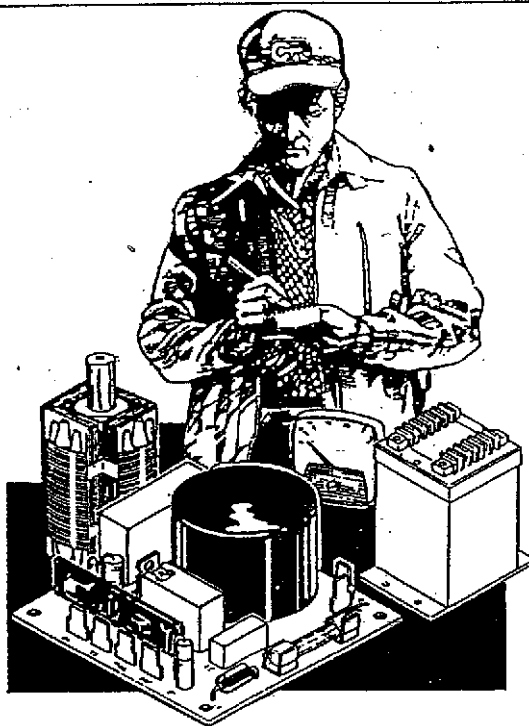
DP Series

DR Series

DZ Series

440 - 600kW

PMG GENERATOR SET



**Power
Generation**

Redistribution or publication of this document
by any means, is strictly prohibited.

TABLE OF CONTENTS

	GRID
INTRODUCTION	I4
INDEX	I5
EXTERNAL ENGINE COMPONENTS - RIGHT SIDE	I7
EXTERNAL ENGINE COMPONENTS - LEFT SIDE	I9
ENGINE COOLANT HEATER (KIM TYPE)	I11
ENGINE COOLANT HEATER (WATLOW TYPE)	I13
GOVERNOR	I14
 TABLE OF CONTENTS FOR GENERATOR SECTION	 J8
GENERATOR (SPEC A)	J10
GENERATOR (BEGIN SPEC B)	J12
STATOR SECTION OF GENERATOR FRAME 5	J14
STATOR SECTION OF GENERATOR FRAME 6	J16
ROTOR SECTION OF GENERATOR FRAME 5	J18
ROTOR SECTION OF GENERATOR FRAME 6	J20
OVERSPEED SENSOR	J21
OVERSPEED SWITCH	J22
PERMANENT MAGNET EXCITER	J23
 TABLE OF CONTENTS FOR GENERATOR SET CONTROLS	 K3
GENERATOR SET CONTROL (WITH HOUSING ENCLOSURE)	K5
ENGINE CONTROL COMPONENTS (SETS WITH HOUSING ENCLOSURE)	K7
GENERATOR CONTROL COMPONENTS (SETS WITH HOUSING ENCLOSURE) ..	K9
CONTROL HEATER (SETS WITH HOUSING ENCLOSURE)	K10
POTENTIAL TRANSFORMER (SETS WITH HOUSING ENCLOSURE)	K11
BLANK PAGE	K12
WATTMETER (SETS WITH HOUSING ENCLOSURE)	K13
GENERATOR SET CONTROL (WITHOUT HOUSING ENCLOSURE)	K15
ENGINE CONTROL COMPONENTS (SETS WITHOUT HOUSING ENCLOSURE) ..	K17
GENERATOR CONTROL COMPONENTS (SETS WITHOUT HOUSING ENCLOSURE)	K19

TABLE OF CONTENTS

	GRID
INTRODUCTION	I4
INDEX	I5
EXTERNAL ENGINE COMPONENTS - RIGHT SIDE	I7
EXTERNAL ENGINE COMPONENTS - LEFT SIDE	I9
ENGINE COOLANT HEATER (KIM TYPE).....	I11
ENGINE COOLANT HEATER (WATLOW TYPE).....	I13
GOVERNOR	I14
TABLE OF CONTENTS FOR GENERATOR SECTION	J8
GENERATOR (SPEC A)	J10
GENERATOR (BEGIN SPEC B)	J12
STATOR SECTION OF GENERATOR FRAME 5	J14
STATOR SECTION OF GENERATOR FRAME 6	J16
ROTOR SECTION OF GENERATOR FRAME 5	J18
ROTOR SECTION OF GENERATOR FRAME 6	J20
OVERSPEED SENSOR	J21
OVERSPEED SWITCH	J22
PERMANENT MAGNET EXCITER	J23
TABLE OF CONTENTS FOR GENERATOR SET CONTROLS	K3
GENERATOR SET CONTROL (WITH HOUSING ENCLOSURE)	K5
ENGINE CONTROL COMPONENTS (SETS WITH HOUSING ENCLOSURE)	K7
GENERATOR CONTROL COMPONENTS (SETS WITH HOUSING ENCLOSURE)..	K9
CONTROL HEATER (SETS WITH HOUSING ENCLOSURE)	K10
POTENTIAL TRANSFORMER (SETS WITH HOUSING ENCLOSURE	K11
BLANK PAGE	K12
WATTMETER (SETS WITH HOUSING ENCLOSURE)	K13
GENERATOR SET CONTROL (WITHOUT HOUSING ENCLOSURE).....	K15
ENGINE CONTROL COMPONENTS (SETS WITHOUT HOUSING ENCLOSURE)..	K17
GENERATOR CONTROL COMPONENTS (SETS WITHOUT HOUSING ENCLOSURE)	K19

Introduction

This Parts Manual applies to the Standard Gen Sets Listed below. The illustrations are arranged in groups of related items, and each part or assembly is identified by a Reference Number. All parts illustrated are typical, and unless otherwise mentioned in the description column the parts are interchangeable between models.

These typical illustrations are subject to change and reflect only the latest replacement parts arrangement. The Right and Left sides of the Set are determined by FACING the FRONT (Engine end) of the Set.

Set Data Table

MODEL IDENTIFICATION	RATING	RPM RATING	BATTERY VOLTAGE
440.0D_GA - */ # @	440,000 WATTS	1500 RPM	24 VDC
500.0D_GA - */ # @	500,000 WATTS	1800 RPM	24 VDC
550.0D_GC - */ # @	550,000 WATTS	1500 RPM	24 VDC
600.0D_GB - */ # @	600,000 WATTS	1800 RPM	24 VDC

* - Voltage Codes follow Model Letter designations.

- Specification Number: Number 1 is Standard, all others indicate variations.

@ - Specification Letter: Letter advances (A to B, B to C, etc) with major manufacturing changes.

Electrical Data Table

*VOLTAGE CODE	VOLTS	HERTZ	WIRE	PHASE	NOTES
H	347/600	60	4	3	
L	120/208	60	12	3	+
	127/220	60	12	3	
	139/240	60	12	3	
	240/416	60	12	3	
	254/440	60	12	3	
	277/480	60	12	3	
Z	110/190	50	12	3	+
	115/200	50	12	3	
	120/208	50	12	3	
	127/220	50	12	3	
	220/380	50	12	3	
	230/400	50	12	3	
	240/416	50	12	3	
	254/440	50	12	3	

+ - The Stators are Reconnectible.

Engine Replacement Parts

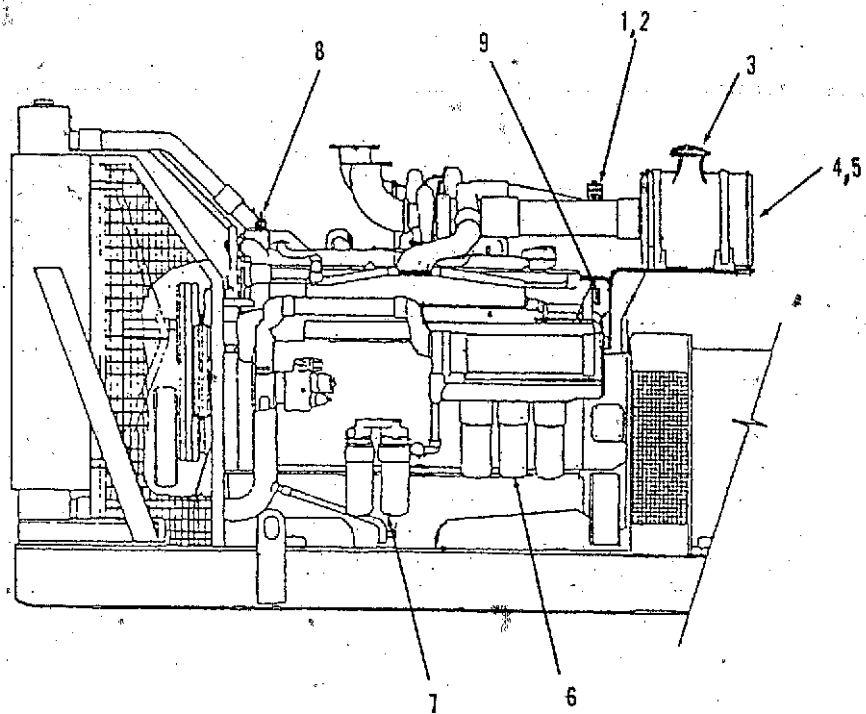
The External Engine Components added or modified during the Generator Set Assembly have been identified in this Parts Manual. For Internal Engine Parts and External Engine Assemblies not covered herein; refer to the applicable Cummins Engine Parts Catalog.

Redistribution or publication of this document by any means, is strictly prohibited.

Index

	GRID		GRID
Adapter, Generator	J18, J20	Light, Indicator	K7, K17
Ammeter - AC	K9, K19		
Ammeter - DC	K7, K17	Meter, Frequency	K9, K19
		Meter, Tach	K7, K17
Bracket, End - Generator	J14, J16	Meter, Time - Running	K9, K19
Cable, Battery	19	Radiator	19
Cap, Radiator	19	Rotor, Exciter	J18, J20
Control, Engine	K7, K17		
Control, Generator	K9, K19	Sender, Pressure - Oil	19
Control, Generator Set	K5, K15	Sender, Temperature - Low Engine	17
Cooling System	19	Sender, Temperature - Water	17
		Stator, Exciter	J14, J16
Disk, Drive - Generator	J18, J20	Switch, Overspeed	19
		Switch, Pressure - Low Oil	19
Gauge, Pressure - Oil	K7, K17	Switch, Push - Reset/Panel	K7, K17
Gauge, Temperature - Oil	K7, K17	Switch, Push - Run/Stop/Remote	K7, K17
Gauge, Temperature - Water	K7, K17	Switch, Rotary - Generator Control	K9, K19
Generator 33.35	K9, K19	Switch, Temperature - Hi Water	19
		Switch, Temperature - Pre Water	19
Harness, Wiring - Control (AC)	K9, K19		
Harness, Wiring - Control (DC)	K7, K17	Transformer, Current	K9, K19
Harness, Wiring - Control to Engine	K7, K17	Transformer, Potential	K9, K19
Harness, Wiring - Control to Generator	K7, K17		
Harness, Wiring - Control to Governor	K7, K17		
Harness, Wiring - Water to Eng Monitor Bd	K7, K17	Voltmeter	K7, K17, K19
Harness, Wiring - Speed Control to Jack	K7, K17		
Harness, Wiring - Fuse Block to Jack	K7, K17	Wattmeter	K7, K17, K19
Heater, Control	K7, K17		
Housing, Control	K7, K17		

External Engine Components
Right Side



External Engine Components Right Side

REF NO.	PART NO.	QTY USED	PART DESCRIPTION	REF NO.	PART NO.	QTY USED	PART DESCRIPTION
1	140-2226	1	Indicator, Air Restriction (Includes Fitting)	6		3	Filter, Oil (CEC#3313279) [LF670]
2	140-1260	1	Fitting, Male - Hex	7		2	Filter, Fuel (CEC# 299202) [FF202]
3	140-1545	1	Cap, Air Cleaner				Sender & Bushing
4		1	Cleaner, Air (Includes Element)			1	Sender, Temperature
		1	Outdoor (CEC# 3021645)		193-0375	1	Bushing, Reducer
	140-1647	1	Heavy Duty (CEC# 3000958)		505-0021	1	(3/4" x 1/2")
5		1	Element - Outdoor				Switch, Temperature - Low
		1	(CEC# 3022209) [AF928M]	9	309-0269	1	Engine Temperature (S4)
		1	Elements - Heavy Duty				
	140-1649	1	Primary [AF891M]				
	140-1650	1	Secondary [AF890]				

NOTES:

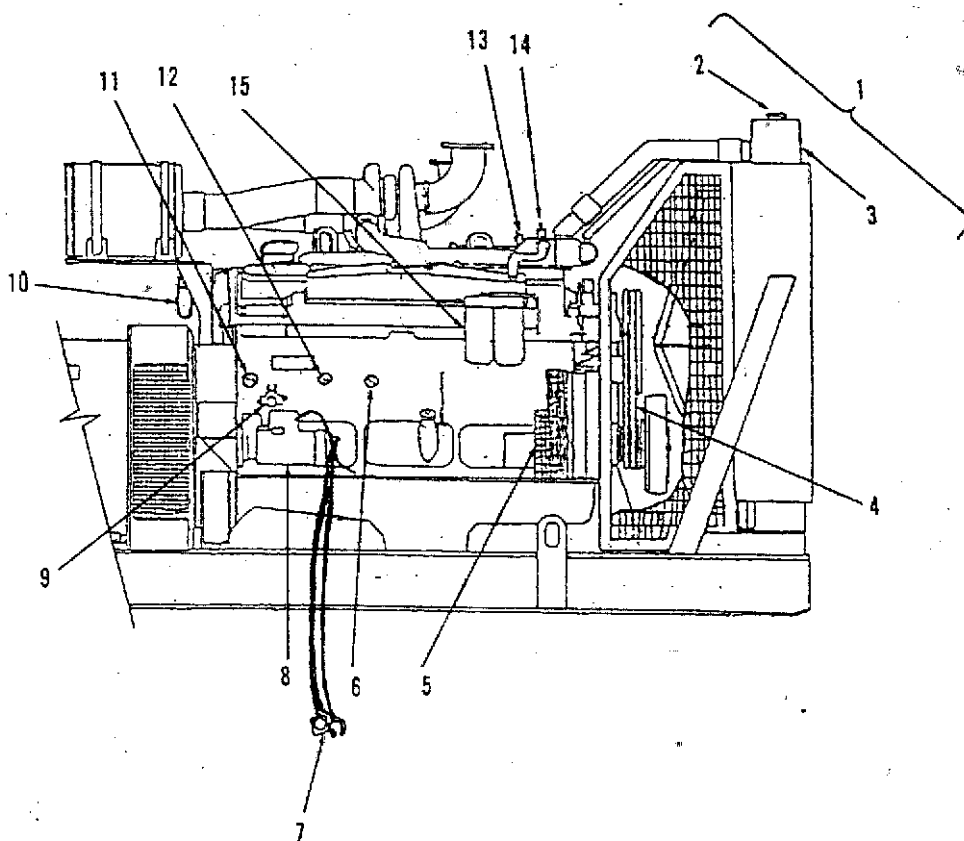
(CEC#) Numbers in Parans are Cummins Engine Company Identification.
[] Numbers in Brackets are Fleetwood Inc. Identification.



**Power
Generation**

Redistribution or publication of this document
by any means, is strictly prohibited.

External Engine Components Left Side



External Engine Components Left Side

REF. NO.	PART NO.	QTY USED	DESCRIPTION	REF. NO.	PART NO.	QTY USED	DESCRIPTION
1	Ref.		Cooling System - Radiator (Select replaceable items as required)	7			Cable, Electrical
			Spec A		416-0632	1	Ground
	1		D-GA (BEARWARD # 53904-4PA)		416-0636	1	Battery (Positive)
	1		D-GB (BEARWARD # 53905-4P)	8	416-0639	1	Battery (Negative)
	1		D-GC (BEARWARD # 53905-4P)	9	416-0473	1	Battery (Jumper)
			Spec B	10	191-1588	1	Starter (24 VDC)
	1		D-GA (BEARWARD # 53904-2P)	9	307-2621-02	1	Switch, Magnetic
	1		D-GB (BEARWARD # 54080-4PA)	10	122-0526	1	Filter, Oil - Bypass
	1		D-GC (BEARWARD # 54080-4PA)	11			Switch & Bushing
					309-0436	1	Switch, Thermostatic (S6)
							(Prealarm)
503-0868	8		Clamp, Hose		505-0117	1	Bushing, Reducer - Flush
503-1460	4		Hose - Upper				(1/2NPT x 3/8NPT)
130-3386	2		Tube, Water-Upper (D-GA)	12			Switch & Coupling & Nipple
130-3387	2		Tube, Water-Upper (D-GB, GC)		309-0272	1	Switch, Pressure - Oil (S5)
503-0885	4		Clamp, Hose				Alarm
503-0856	2		Hose - Lower		505-0026	1	Coupling, Pipe (1/8NPT)
130-3385	1		Tube, Water-Lower (D-GA)		505-0098	1	Nipple, Pipe (1/8NPT x 3/4")
130-3388	1		Tube, Water-Lower (D-GB, GC)	13			Sender & Bushing
130-0523	1		Cap, Radiator (7 PSI)		192-0375	1	Sender, Temperature (E2)
3			Radiator (Excludes Cap)		505-0021	1	Bushing, Reducer (3/4NPT x 1/2NPT)
			Spec A	14			Switch & Bushing
130-3284	1		D-SA		309-0437	1	Switch, Thermostatic (S2)
130-3285	1		D-GB, GC				(Shutdown)
			Spec B		505-0117	1	Bushing, Reducer - Flush
130-3400	1		D-GA				(1/2NPT x 3/8NPT)
130-3401	1		D-GB, GC	15			*Filter, Water - W/Corrosion
511-0165	1		Belt, Drive - Fan				Inhibiting Chemical DCA4
5			Alternator Charging Components				Service for 20-40 Gal Coolin
191-1876-01	1		Alternator (35 Amp, 24 VDC)				System (CEC# 3318157) [WF207
130-3317-01	1		Pulley, Drive				Service for 40-60 Gal Coolin
511-0161	1		Belt, Drive - Alternator				System (CEC# 3315146) [WF207
6			Switch & Coupling & Nipple				Pre-Charging for 20-90 Gal
309-0169	1		Switch, Pressure - Oil (S1)				Cooling System (CEC# 33183
			Shutdown				[WF2076]
505-0026	1		Coupling, Pipe (1/8NPT)				
505-0098	1		Nipple, Pipe (1/8NPT x 3/4")				

NOTES:

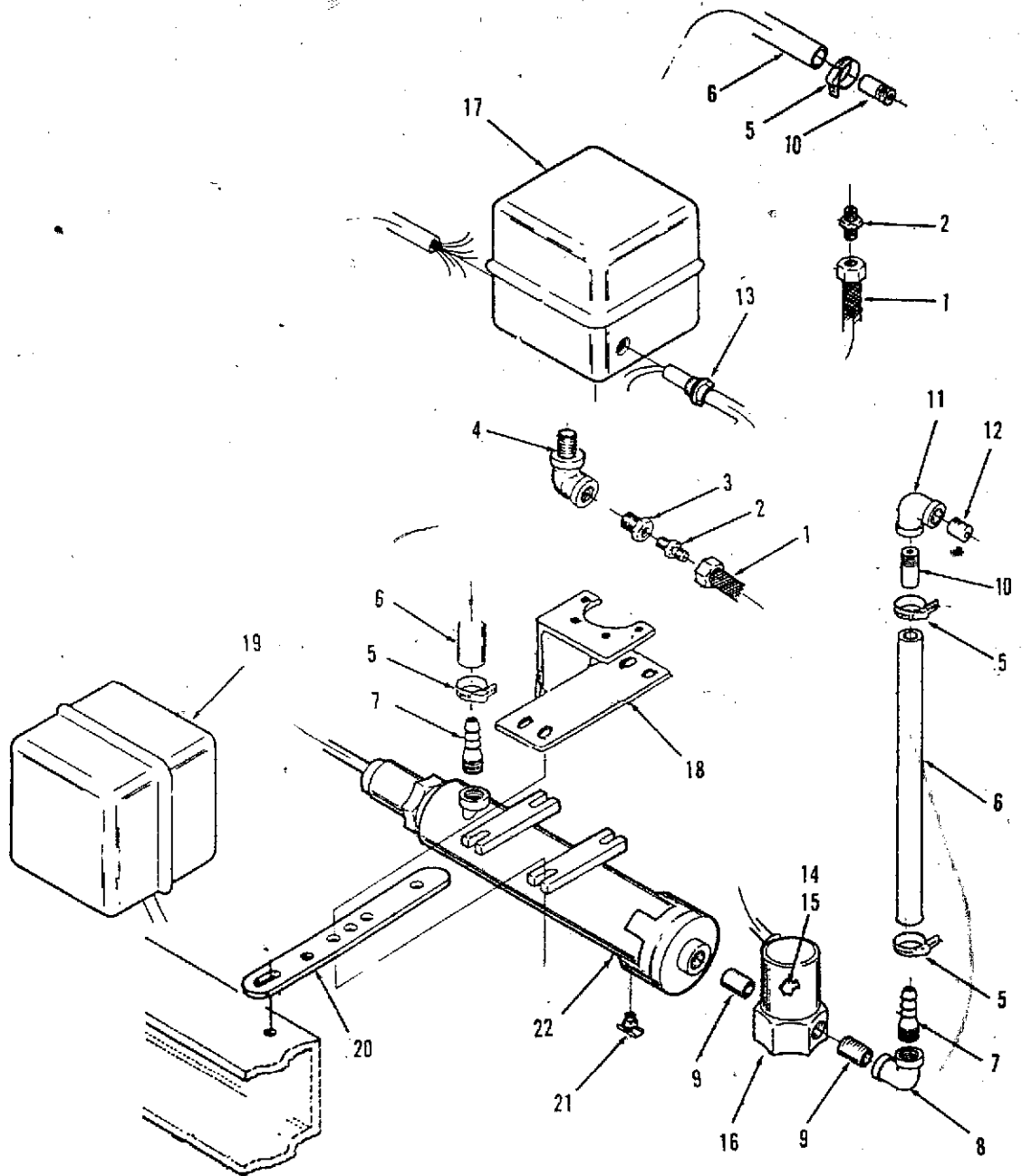
© Cooling Systems Manufactured by:
BEARMARD ENGINEERING LTD
Main Road, Far Cotton
Northampton, England NN4 9HU

USA Office:
BEARWARD RADIATOR
Route 222 Box 187
Fleetwood, PA 19522
215-944-6017

* Replacement cartridges recommend and should be used in lieu of the Original Engine Factory Installed Item which contains a Pre-Charge amount of DCA or DCA4 Chemical. Replacement with Pre-charge Cartridge may overload the Cooling System and cause problems or failure of the Set.

(CEC#) Numbers in Parans are Cummins Engine Company Identification.
[] Numbers in Brackets are Fleetwood Inc. Identification.

Heater - Engine Coolant Kia Type

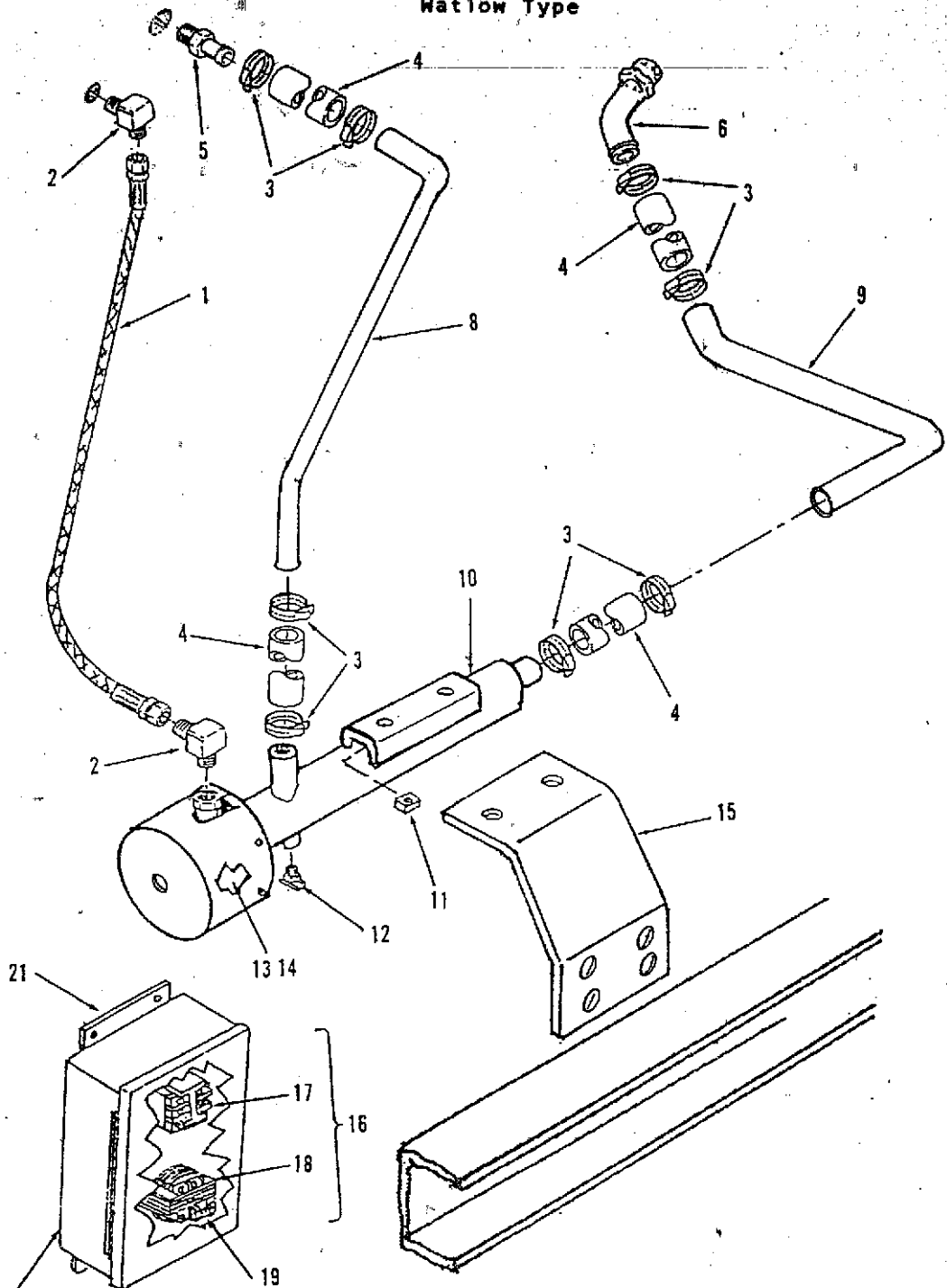


Heater - Engine Coolant Kim Type

REF NO.	PART NO.	QTY USED	PART DESCRIPTION	REF NO.	PART NO.	QTY USED	PART DESCRIPTION
1	501-0188	1	Line, Fuel	18	333-0224	1	Bracket, Support
2	502-0193	2	Connector				Attaching Parts for Bracket
3	505-0007	1	Bushing, Reducer - Hex		800-0007	4	Screw, Cap - Hex Head
4	502-0054	1	Elbow, Pipe - Street, 90°				(1/4-20 x 1")
5	503-0429	4	Clamp, Hose		850-0040	4	Washer, Lock - "Spring (1/4"
6	503-1411	AR	Hose, Bulk		862-0001	4	Nut, Hex (1/4-20)
7	505-0759	2	Adapter, Hose to Pipe	19			Contactors
8	505-0041	1	Elbow, Pipe - 90°		307-1460	1	230 VAC, 3 Pole
9	505-0004	2	Nipple, Pipe - Close		307-1164	1	460 VAC, 3 Pole
10	505-0324	2	Nipple, Pipe - Half	20	130-1191	2	Bracket, Mounting
11	505-0132	1	Elbow, Pipe - 90°				Attaching Parts for Bracket
12	505-0102	1	Nipple, Pipe - Close		800-0052	2	Screw, Cap - Hex Head
13	331-0027	6	Clamp, Cable				(3/8-16 x 1-1/2")
14	323-0957	2	Nut, Wire		862-0003	2	Nut, Hex (3/8-16)
15	332-0149	8	Lug, Terminal	21	504-0003	1	Cock, Drain
16			Switch, Thermostatic	22			Heater, Electrical
	309-0304	1	80° - 100° Fahrenheit		333-0143	1	4000 Watt, 208 VAC - 1 Phase
	309-0490	1	100° - 120° Fahrenheit		333-0164	1	4000 Watt, 208 VAC - 3 Phase
	309-0253	1	120° - 140° Fahrenheit		333-0138	1	4000 Watt, 240 VAC - 1 Phase
17	309-0307	1	Switch, Pressure - Oil		333-0190	1	4000 Watt, 240 VAC - 3 Phase
			Attaching Parts for Switch		333-0150	1	4000 Watt, 277 VAC - 1 Phase
	812-0079	4	Screw, Machine - Round Head		333-0183	1	4000 Watt, 380 VAC - 1 Phase
			(#8-32 x 1/2")		333-0174	1	4000 Watt, 380 VAC - 3 Phase
	854-0007	4	Washer, Lock - ET (#8)		333-0161	1	4000 Watt, 480 VAC - 1 Phase
					333-0144	1	4000 Watt, 480 VAC - 3 Phase

AR : As Required, Bulk Hose available in Multifoot lengths.

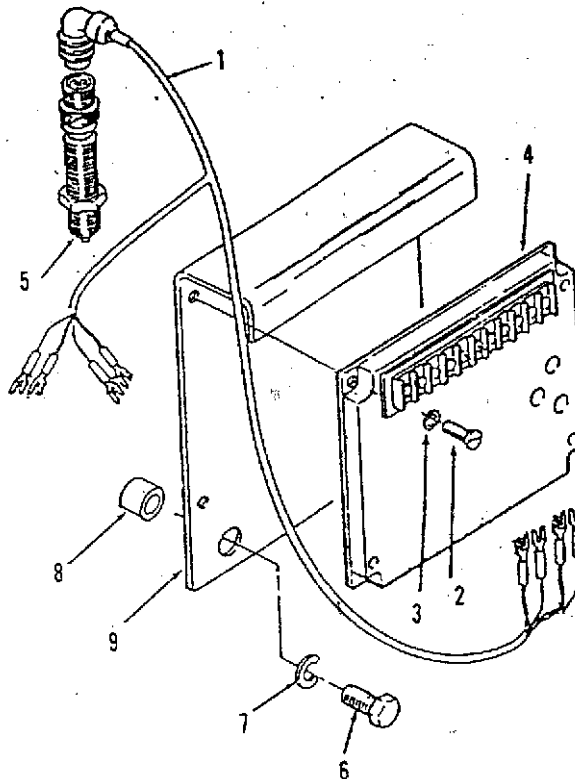
Heater - Engine Coolant Watlow Type



Heater - Engine Coolant Matlow Type

REF NO.	PART NO.	QTY USED	PART DESCRIPTION	REF NO.	PART NO.	QTY USED	PART DESCRIPTION
1	501-0537-03	1	Hose Assembly - Oil Pressure	12	504-0003	1	Cock, Drain (1/4 NPT)
2	502-1043-01	2	Elbow, Pipe - Male, 90 DEG	13		1	Thermostat
3	503-1603	8	Clamp, Hose	14		1	Switch, Pressure - Oil
4	503-1602	4	Hose, Rubber	15	130-3189	1	Bracket, Mounting - Heater
5	502-1046	1	Coupling, Hose				Attaching Parts for Bracket
6		1	Coupling, Hose - Elbow		800-0210	4	Screw, Cap - Hex Head (3/8-16 x 1-1/4")
8	130-3339	1	Tube, Water		850-0103	4	Washer, lock - Spring (3/8")
9	130-3340	1	Tube, Water		871-0028	4	Nut, Hex - Brass (3/8-16)
10			Heater, Electrical - Engine Coolant (Includes Thermostat, Oil Pressure Switch, Drain Cock and Mounting Nuts)	16			Switch, Control - Heater (Includes Contactor, Step- down Transformer with Fuse [480V Unit Only], Ground Lug and Box)
	333-0413-08	1	4000 Watt, 208 VAC		309-0567-01	1	120 VAC
	333-0389-02	1	4000 Watt, 240 VAC		309-0567-02	1	480 VAC
	333-0389-04	1	4000 Watt, 480 VAC (Includes Heater Control Switch Unit)	17		1	Contactor (37.5 AMP, 3 Pole, SPST, 120 VAC Coil)
	333-0389-06	1	4000 Watt, 120 VAC (Includes Heater Control Switch Unit)	18		1	Fuse (1 AMP)
			Attaching Parts for Heater	19		1	Transformer, Step-down (240/480VAC Primary, 120 VAC Secondary, with Fuse Clips on output Terminals)
	800-0222	2	Screw, Cap - Hex Head (1/4-20 x 3/4")	20		1	Box, Electrical
	850-0101	2	Washer, lock - Spring (1/4")	21	333-0390	1	Bracket, Mounting - Switch
	402-0608	2	Isolator, Vibration				
	402-0609	2	Isolator, Vibration				
11		2	Nut, Special (Supplied with Heater)				

Electric Governor



REF NO.	PART NO.	QTY USED	PART DESCRIPTION
1	338-1777	1	Harness, Wiring
2	813-0103	4	Screw, Machine - Round Head (#10-32 x 3/4")
3	870-0131	4	Nut, Self-locking, Hex (#10-32)
4	151-0637	1	Controller, Governor

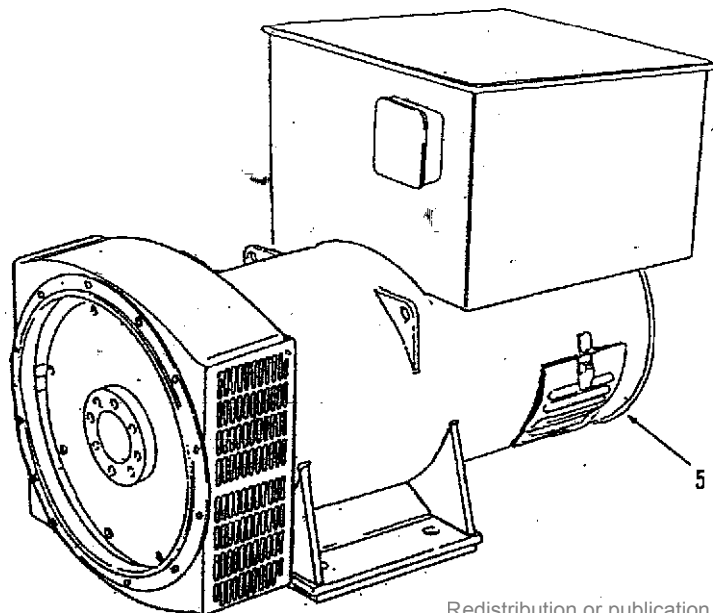
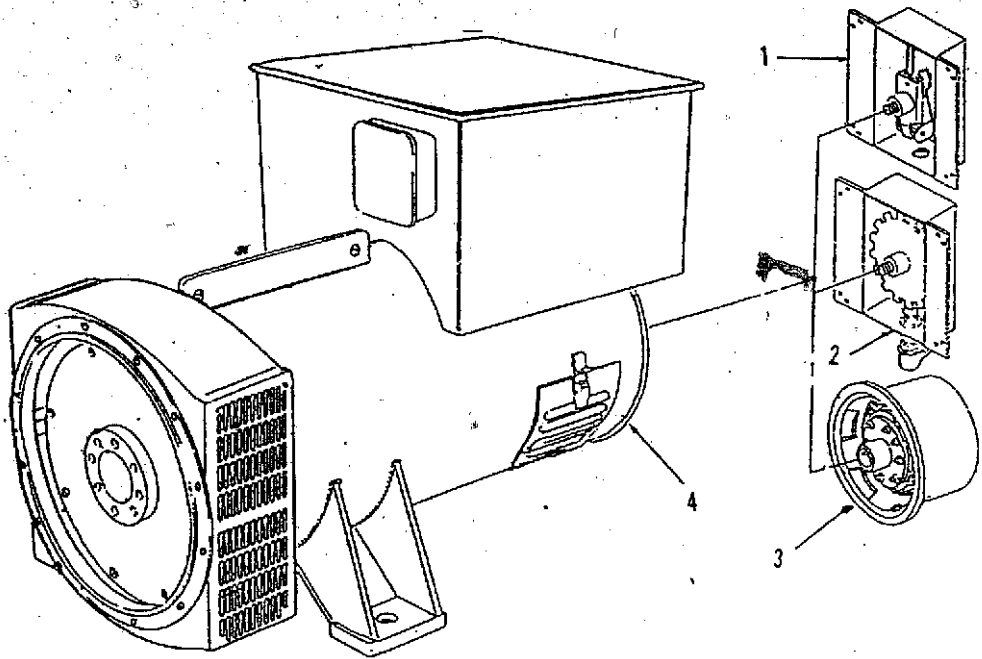
REF NO.	PART NO.	QTY USED	PART DESCRIPTION
5	151-0411	1	Pickup, Magnetic
6	800-0151	2	Screw, Cap - Hex Head (3/4-10 x 1")
7	850-0079	2	Washer, Lock - Spring (3/4")
8	370-4040	2	Spacer, Sleeve
9	150-2007	1	Bracket, Mounting

TABLE OF CONTENTS

GENERATOR SECTION

GENERATOR - Spec A	33
GENERATOR - Spec B	35
STATOR SECTION - SAE 0 / SAE 18, Frame 5	37
STATOR SECTION - SAE 0 / SAE 18, Frame 6	39
ROTOR SECTION - SAE 0 / SAE 18, Frame 5	41
ROTOR SECTION - SAE 0 / SAE 18, Frame 6	43
OVERSPEED SENSOR	44
OVERSPEED SWITCH	45
PERMANENT MAGNET EXCITER	46

Generator Spec A

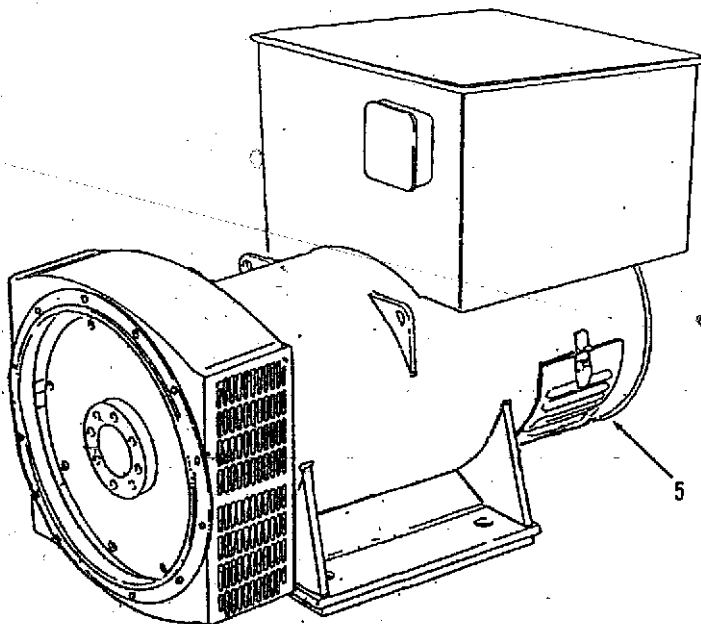
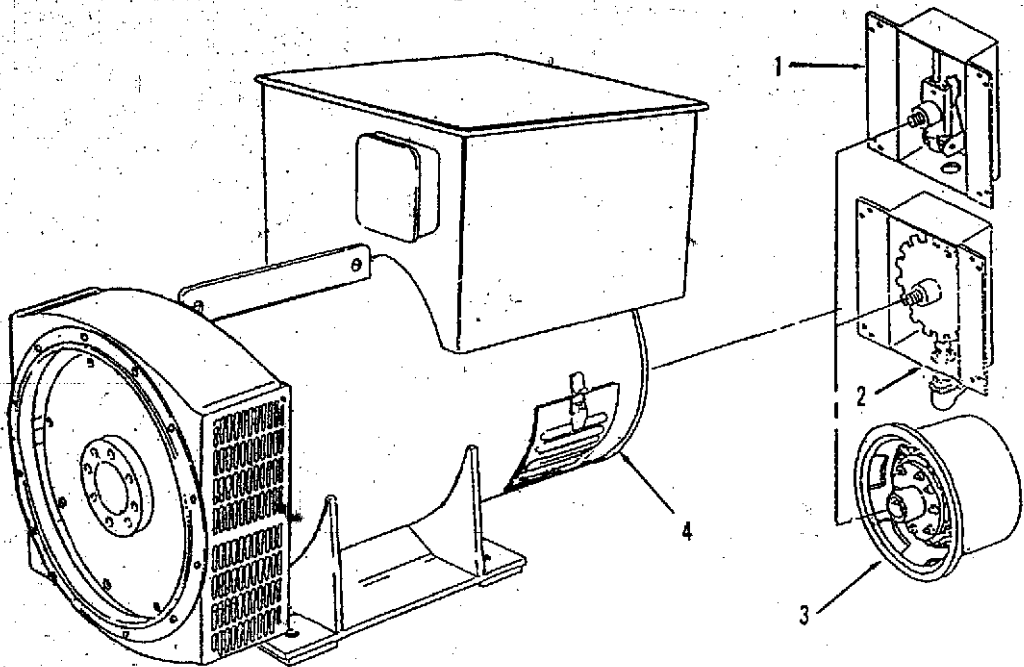


Generator Spec A

REF NO.	PART NO.	QTY USED	PART DESCRIPTION	REF NO.	PART NO.	QTY USED	PART DESCRIPTION
1		1	Module, Overspeed Switch (See Separate Page for Parts)				
	821-2045	4	Attaching Parts Screw, Self-locking - Hex Hd (M8 x 1.25 x 16mm)	800-0558	12		Adapter to Flywheel Housing Screw, Cap - Hex Head, G (1/2-13 x 1-1/2")
2		1	Module, Overspeed Sensor (See Separate Page for Parts)	850-0060	12		Washer, Lock - Spring (1, Drive Disc to Flywheel)
	821-2045	4	Attaching Parts Screw, Self-locking - Hex Hd (M8 x 1.25 x 16mm)	800-0530	6		Screw, Cap - Hex Head, G (5/8-11 x 1-1/4")
3		1	Module, Perm. Magnet Exciter (See Separate Page for Parts)	5	Note 1		Generator - Frame 6 (See Separate pages for P. Attaching Parts)
	249-0298	4	Attaching Parts Screw, Cap - Hex Head (M8 x 16mm)	800-0578	4		Generator to Chassis Screw, Cap - Hex Head (1 1/4-7 x 3-1/2")
	249-0218	4	Washer, Lock (M8)	850-0092	4		Washer, Lock - Spring (1, Drive Disc to Flywheel)
	249-0315	4	Clamp, Retaining	526-0093	4		Washer, Flat (1-1/4")
4	Note 1		Generator - Frame 5 (See Separate pages for Parts)	862-0017	4		Nut, Hex (1 1/4-7)
	800-0579	2	Attaching Parts Generator to Chassis Screw, Cap - Hex Head (1-8 x 2-3/4")	800-0576	16		Adapter to Flywheel Housing Screw, Cap - Hex Head, G (1/2-13 x 3/4")
	850-0087	2	Washer, Lock - Spring (1")	850-0060	16		Washer, Lock - Spring (1, Drive Disc to Flywheel)
	526-0084	2	Washer, Flat (1")	800-0530	6		Screw, Cap - Hex Head, G (5/8-11 x 1-1/4")
	862-0018	2	Nut, Hex (1-8)				

Note 1: For replacement Generator please supply the complete Gen Set nameplate and Generator nameplate data.

Generator
Begin Spec B

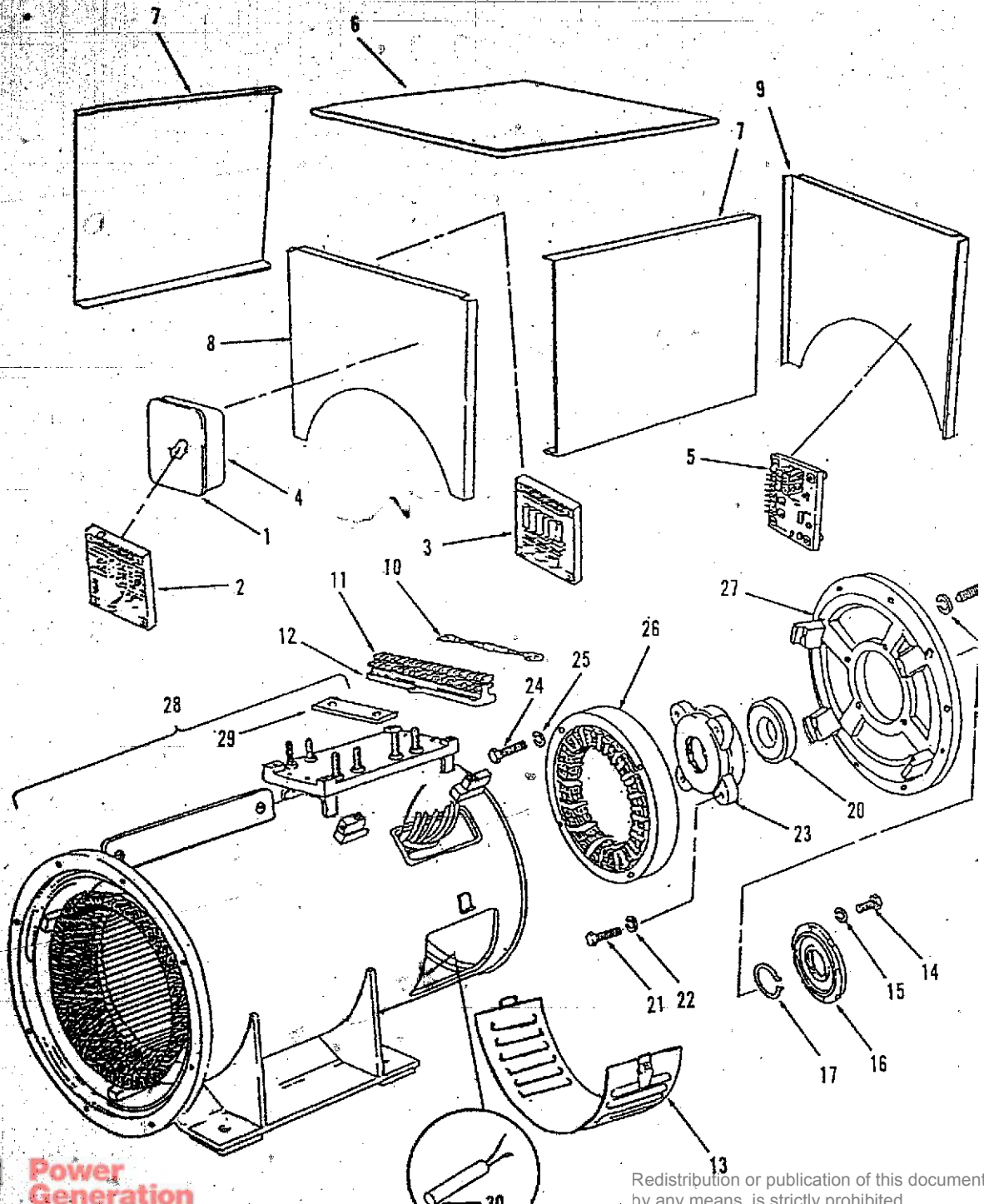


Generator Begin Spec B

REF NO.	PART NO.	QTY USED	PART DESCRIPTION	REF NO.	PART NO.	QTY USED	PART DESCRIPTION
1		1	Module, Overspeed Switch (See Separate Page for Parts)	800-0558	12		Adapter to Flywheel Housing Screw, Cap - Hex Head, Gr (1/2-13 x 1-1/2")
	821-2045	4	Attaching Parts Screw, Self-locking - Hex Hd (M8 x 1.25 x 16mm)	850-0060	12		Washer, Lock - Spring (1, Drive Disc to Flywheel)
2		1	Module, Overspeed Sensor (See Separate Page for Parts)	800-0530	6		Screw, Cap - Hex Head, Gr (5/8-11 x 1-1/4")
	821-2045	4	Attaching Parts Screw, Self-locking - Hex Hd (M8 x 1.25 x 16mm)	5	Note 1		Generator - Frame 5 (See Separate pages for P Attaching Parts
3		1	Module, Perm. Magnet Exciter (See Separate Page for Parts)	800-0273	4		Generator to Chassis Screw, Cap - Hex Head (1 1/4-7 x 4")
	249-0298	4	Attaching Parts Screw, Cap - Hex Head (M8 x 16mm)	850-0092	4		Washer, Lock - Spring (1- Washer, Flat (1-1/4")
	249-0218	4	Washer, Lock (M8)	526-0093	4		Nut, Hex (1 1/4-7)
	249-0315	4	Clamp, Retaining	862-0017	4		Adapter to Flywheel Housing Screw, Cap - Hex Head, Gr (1/2-13 x 3/4")
4	Note 1		Generator - Frame 5 (See Separate pages for Parts)	800-0576	16		Washer, Lock - Spring (1, Drive Disc to Flywheel)
			Attaching Parts Generator to Chassis Screw, Cap - Hex Head (1-8 x 2-3/4")	850-0060	16		Screw, Cap - Hex Head, Gr (5/8-11 x 1-1/4")
	800-0579	4	Washer, Lock - Spring (1")	800-0530	6		
	850-0087	4	Washer, Flat (1")				
	526-0084	4	Nut, Hex (1-8)				
	862-0018	4					

Note 1: For replacement Generator please supply the complete Gen Set nameplate and Generator nameplate da

Generator Stator Section Frame 5

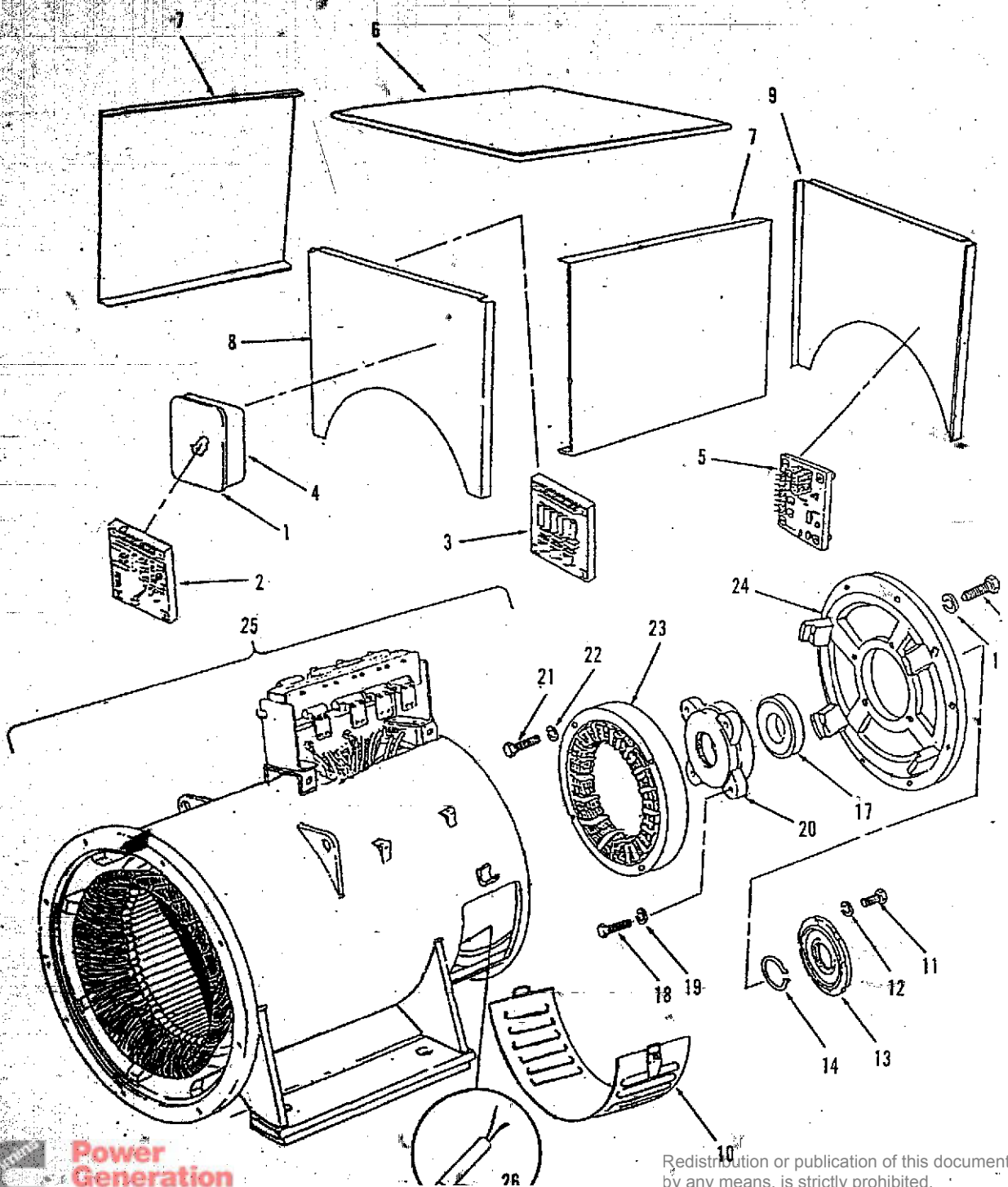


Generator Stator Section Frame 5

REF NO.	PART NO.	QTY USED	PART DESCRIPTION	REF NO.	PART NO.	QTY USED	PART DESCRIPTION
1	249-0631	2	Lid	14	249-0201	8	Screw, Cap - Hex Head (M10 x 35mm)
	249-0304	4	Attaching Parts	15	249-0202	8	Washer, Lock - Spring (M10)
2			Screw, Captive	16	249-0242	1	Cap, Bearing - Outer
	305-0770	1	Regulator, Voltage	17	249-0232	1	Circlip
	305-0778	1	Standard 1 Phase u/w PMG	18	249-0243	4	Screw, Cap - Hex Head (M10 x 30mm)
			3 Phase (Used with	19	249-0202	4	Washer, Lock - Spring (M10)
			PMG Exciter & 3 Phase	20	249-0241	1	Bearing, Ball
	305-0803	1	Sensing Module)	21	249-0245	4	Screw, Cap - Hex Head (M10 x 50mm)
			Manual	22	249-0202	4	Washer, Lock - Spring (M10)
	249-0398	4	Attaching Parts	23	249-0244	1	Cap, Bearing - Inner
3	249-0564	1	Pillar, Threaded	24	249-0256	6	Screw, Cap - Hex Head (M6 x 65mm)
			Module, 3 Phase Sensing	25	249-0212	6	Washer, Lock - Spring (M6)
	249-0398	4	Attaching Parts	26	249-0255	1	Stator, Exciter
4	249-0395	2	Pillar, Threaded	27	249-0272	1	Bracket, End
5	300-3209-02	1	Box	28	NFS	1	Stator, Generator (Include
			Module, Frequency Detection				Terminal Studs and Links)
			Attaching Parts				Attaching Parts Stator
	249-0295	4	Screw, Cap - Hex Head (M5 x 35mm)				to Adapter
	249-0288	4	Washer, Plastic (M5)				Screw, Cap - Hex Head (M12 x 35mm)
	249-0287	4	Nut, Hex - Nylon (M5)		249-0268	8	Washer, Lock - Spring (M12 x 35mm)
6	NFS	1	Lid		249-0205	8	Link, Terminal
7	NFS	2	Panel, Side		249-0200	4	Heater, Electrical - Repla
8	NFS	1	Panel, Front		249-0621	1	70 Watt, 120 VAC
9	NFS	1	Panel, Rear		249-0622	1	70 Watt, 240 VAC
10	249-0428	1	Resistor (Voltage Code H Only)				
11	249-0289	3	Block, Terminal - AUX				
12	249-0424	1	Base, Terminal - AUX				
13	249-0408	2	Grille, Inlet - Air				

NFS - Not For Sale

Generator Stator Section Frame 6

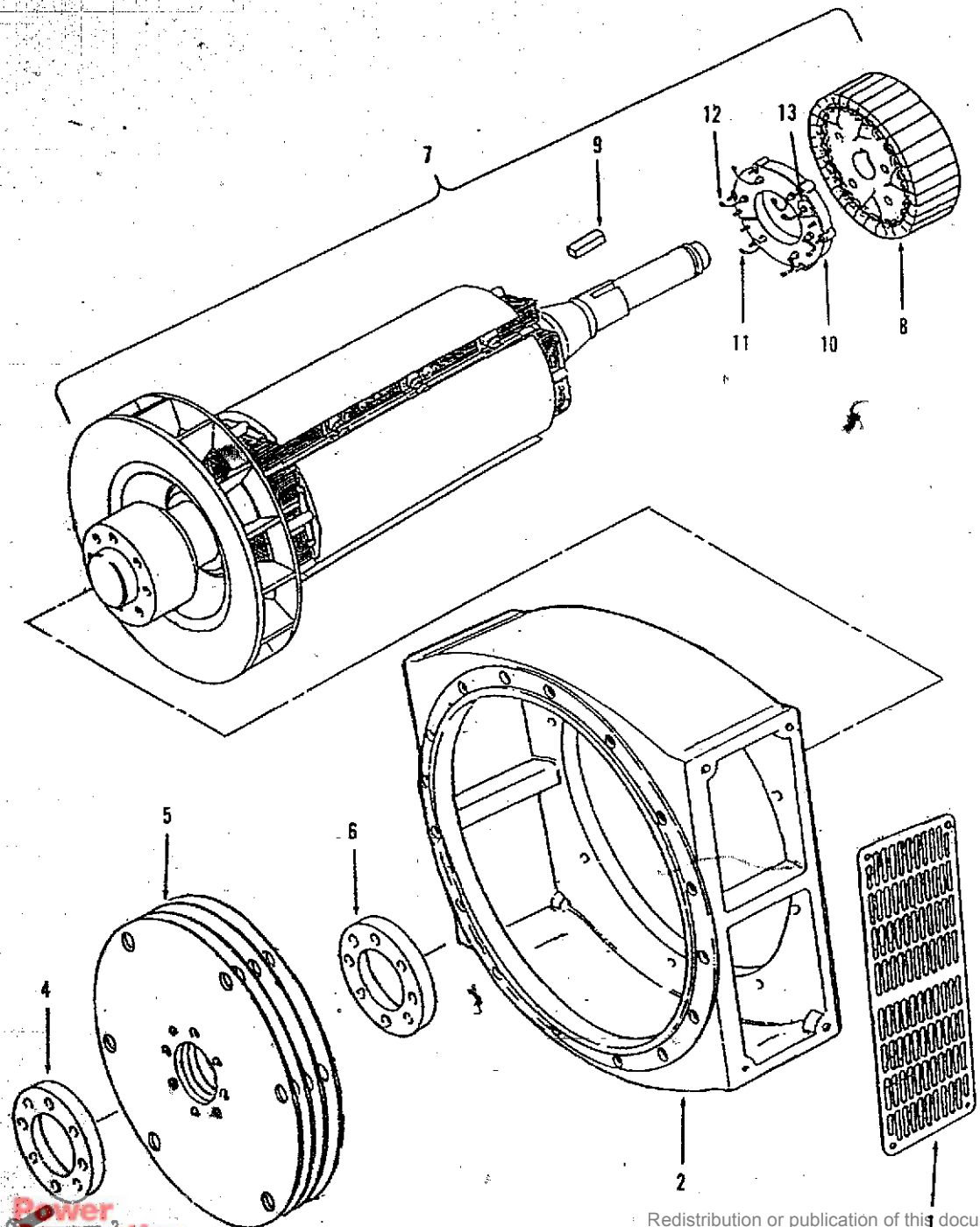


Generator Stator Section Frame 6

REF NO.	PART NO.	QTY USED	PART DESCRIPTION	REF NO.	PART NO.	QTY USED	PART DESCRIPTION
1	249-0631	1	Lid	11	249-0243	4	Screw, Cap - Hex Head (M10 x 30mm)
	249-0304	4	Attaching Parts	12	249-0202	4	Washer, Lock - Spring (M10)
2			Screw, Captive	13	249-0510	1	Cap, Bearing - Outer
	305-0770	1	Regulator, Voltage	14	249-0447	1	Circlip
	305-0778	1	Standard 1 Phase u/w PMG	15	249-0204	8	Screw, Cap - Hex Head (M12 x 40mm)
			3 Phase (Used with PMG Exciter & 3 Phase Sensing Module)	16	249-0205	8	Washer, Lock - Spring (M12)
	305-0803	1	Manual	17	249-0448	1	Bearing, Ball
			Attaching Parts	18	249-0245	4	Screw, Cap - Hex Head (M10 x 50mm)
	249-0398	4	Pillar, Threaded	19	249-0202	4	Washer, Lock - Spring (M10)
3	249-0564	1	Module, 3 Phase Sensing	20	249-0509	1	Cap, Bearing - Inner
			Attaching Parts	21	249-0445	6	Screw, Cap - Hex Head (M6 x 85mm)
	249-0398	4	Pillar, Threaded	22	249-0212	6	Washer, Lock - Spring (M6)
4	249-0395	1	Box	23	249-0470	1	Stator, Exciter
5	300-3209-02	1	Module, Frequency Detection	24	249-0527	1	Bracket, End
			Attaching Parts	25	NFS	1	Stator, Generator (Includes Terminal Studs and Links)
	249-0295	4	Screw, Cap - Hex Head (M5 x 35mm)				Attaching Parts Stator to Adapter
	249-0288	4	Washer, Plastic (M5)		249-0204	8	Screw, Cap - Hex Head (M12 x 40mm)
	249-0287	4	Nut, Hex - Nylon (M5)		249-0205	8	Washer, Lock - Spring (M10)
6	NFS	1	Lid	26	249-0621	1	Heater, Electrical - Replace
7	NFS	2	Panel, Side		249-0622	1	70 Watt, 120 VAC
8	NFS	1	Panel, Front				70 Watt, 240 VAC
9	NFS	1	Panel, Rear				
10	249-0513	2	Grille, Inlet - Air				

NFS - Not For Sale

Generator
Rotor Section
SAE 0/ SAE 18
Frame 5



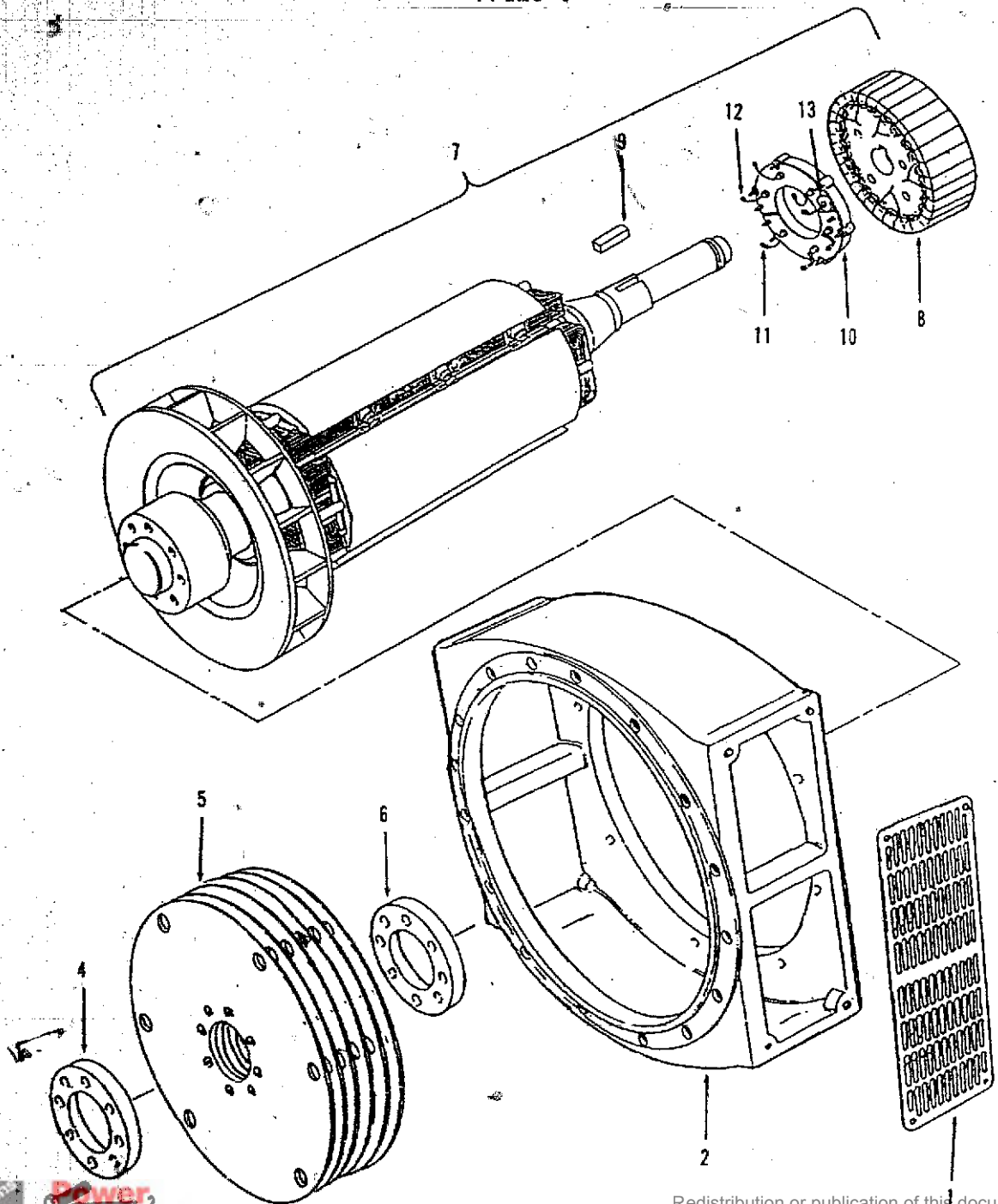
Redistribution or publication of this document
by any means, is strictly prohibited.

**Generator
Rotor Section
SAE 0/ SAE 18
Frame 5**

REF NO.	PART NO.	QTY USED	PART DESCRIPTION	REF NO.	PART NO.	QTY USED	PART DESCRIPTION
1	249-0408	2	Screen, Air - Adapter	7	NFS	1	Rotor, Generator (Includes
	249-0294	12	Attaching Parts				Exciter, Key, and Rectifier
	249-0307	12	Screw, Cap - Hex Head	8	249-0522	1	Assemblies)
	249-0365	12	(M5 x 12mm)	9	249-0271	1	Rotor, Exciter (Does Not
2	249-0322	1	Washer, Lock - Spring (M5)	10	249-0237	1	Include Rectifier Assy)
3	249-0437	8	Washer, Flat (M5)				Key
			Adapter, Generator SAE 0	11	249-0239	3	Rectifier Assy
			Screw, Cap - Hex Head	12	249-0238	3	(Includes Diodes)
			(M20 x 75mm)	13	249-0240	1	Diode, Forward Polarity
4	249-0230	1	Plate, Pressure				Diode, Reverse Polarity
5	249-0276	4	Disc, Drive SAE 18				Varistor
6	249-0277	1	Spacer				

NFS - Not For Sale

Generator
Rotor Section
SAE 0/ SAE 18
Frame 6



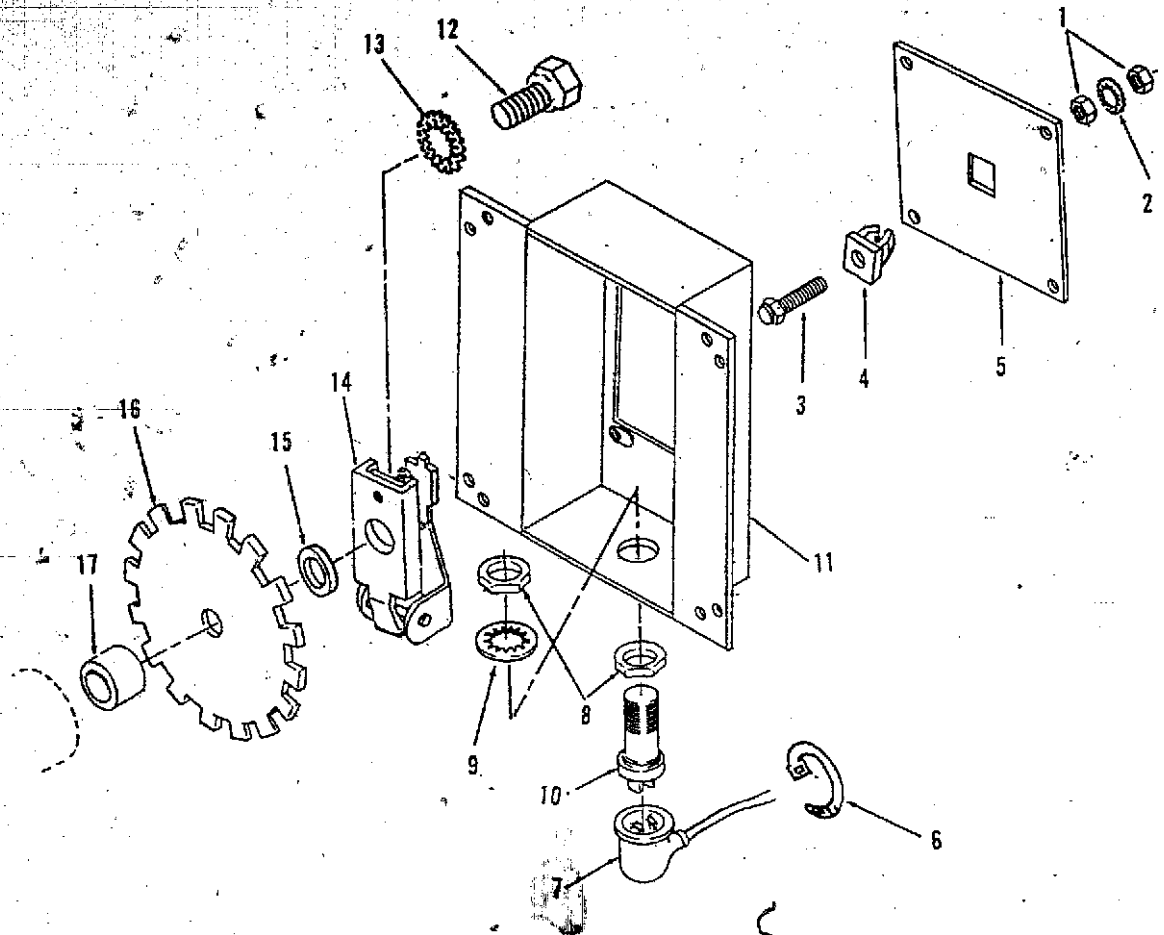
Redistribution or publication of this document
by any means, is strictly prohibited.

**Generator
Rotor Section
SAE 0/ SAE 18
Frame 6**

REF NO.	PART NO.	QTY USED	PART DESCRIPTION	REF NO.	PART NO.	QTY USED	PART DESCRIPTION
1	249-0534	2	Screen, Air - Adapter	7	NFS	1	Rotor, Generator (Includes
	249-0294	12	Attaching Parts				Exciter, Key, and Rectifie
			Screw, Cap - Hex Head	8	249-0512	1	Assemblies)
			(M5 x 12mm)				Rotor, Exciter (Does Not
	249-0307	12	Washer, Lock - Spring (M5)	9	249-0271	1	Include Rectifier Assy)
	249-0365	12	Washer, Flat (M5)	10	249-0237	1	Key
2	249-0533	1	Adapter, Generator SAE 0				Rectifier Assy
3	249-0437	8	Screw, Cap - Hex Head	11	249-0239	3	(Includes Diodes)
			(M20 x 75mm)	12	249-0238	3	Diode, Forward Polarity
4	249-0230	1	Plate, Pressure	13	249-0240	1	Diode, Reverse Polarity
5	249-0276	6	Disc, Drive SAE 18				Varister
6	249-0277	1	Spacer				

NFS - Not For Sale

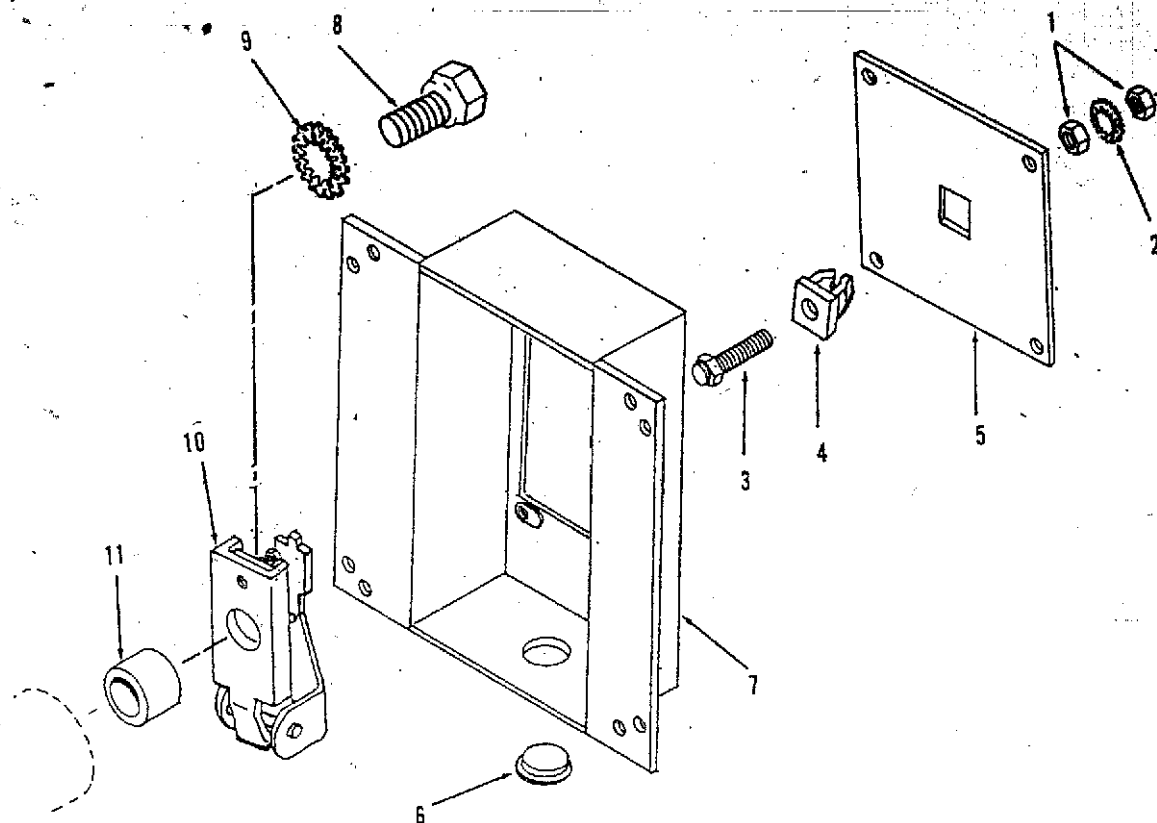
Generator Overspeed Sensor



REF NO.	PART NO.	QTY USED	PART DESCRIPTION
1	862-0001	2	Nut, Hex (1/4-20)
2	853-0013	1	Washer, Lock - EIT (1/4")
3	150-0723	1	Point, Overspeed
4	870-0250	1	Nut, Insulated
5	150-2206	1	Plate, Mounting
	821-0005	4	Screw, Self-locking - Hex (#10-32 x 1/2")
6	332-1445	5	Tie, Cable
7	338-2189-02	1	Harness, Wiring
8	868-0011	2	Nut, Jam - Hex (3/4-16)

REF NO.	PART NO.	QTY USED	PART DESCRIPTION
9	854-0031	1	Washer, Lock - IT (3/4")
10	150-1406	1	Sensor, Speed
11	150-2207	1	Cover, Overspeed Switch
12	718-1058	1	Screw, Cap - Hex Head (M10 x 1.5 x 45mm)
13	856-0010	1	Washer, Lock - EIT (3/8")
14	150-0956	1	Switch, Overspeed
15	370-4031	1	Spacer, Sleeve
16	150-2204	1	Wheel - Speed Sensor
17	370-4032	1	Spacer, Sleeve

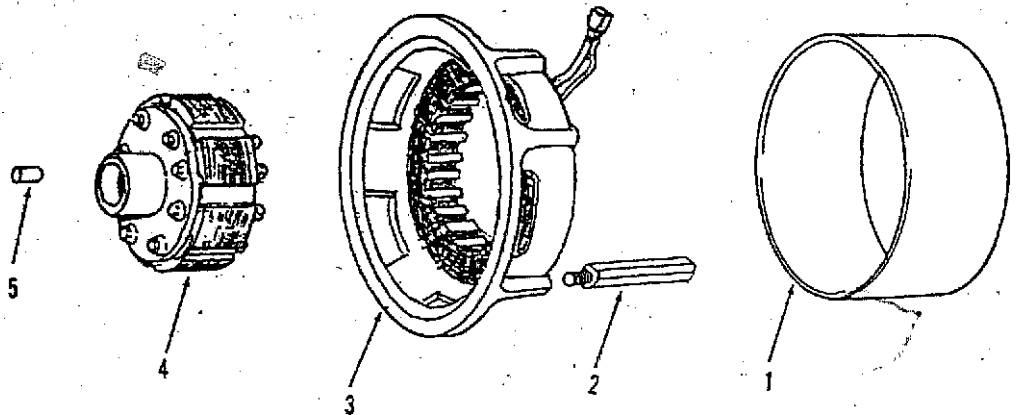
Generator Overspeed Switch



REF NO.	PART NO.	QTY USED	PART DESCRIPTION
1	862-0001	2	Nut, Hex (1/4-20)
2	853-0013	1	Washer, Lock - EIT (1/4")
3	150-0723	1	Point, Overspeed
4	870-0250	1	Nut, Insulated
5	150-2206	1	Plate, Mounting
	821-0005	4	Screw, Self-locking - Hex (#10-32 x 1/2")

REF NO.	PART NO.	QTY USED	PART DESCRIPTION
6	517-0136	1	Plug, Plastic
7	150-2207	1	Cover, Overspeed Switch
8	718-1058	1	Screw, Cap - Hex Head (M10 x 1.5 x 45mm)
9	858-0010	1	Washer, Lock - EIT (3/8")
10	150-0956	1	Switch, Overspeed
11	370-4032	1	Spacer, Sleeve

Generator Permanent Magnet Exciter



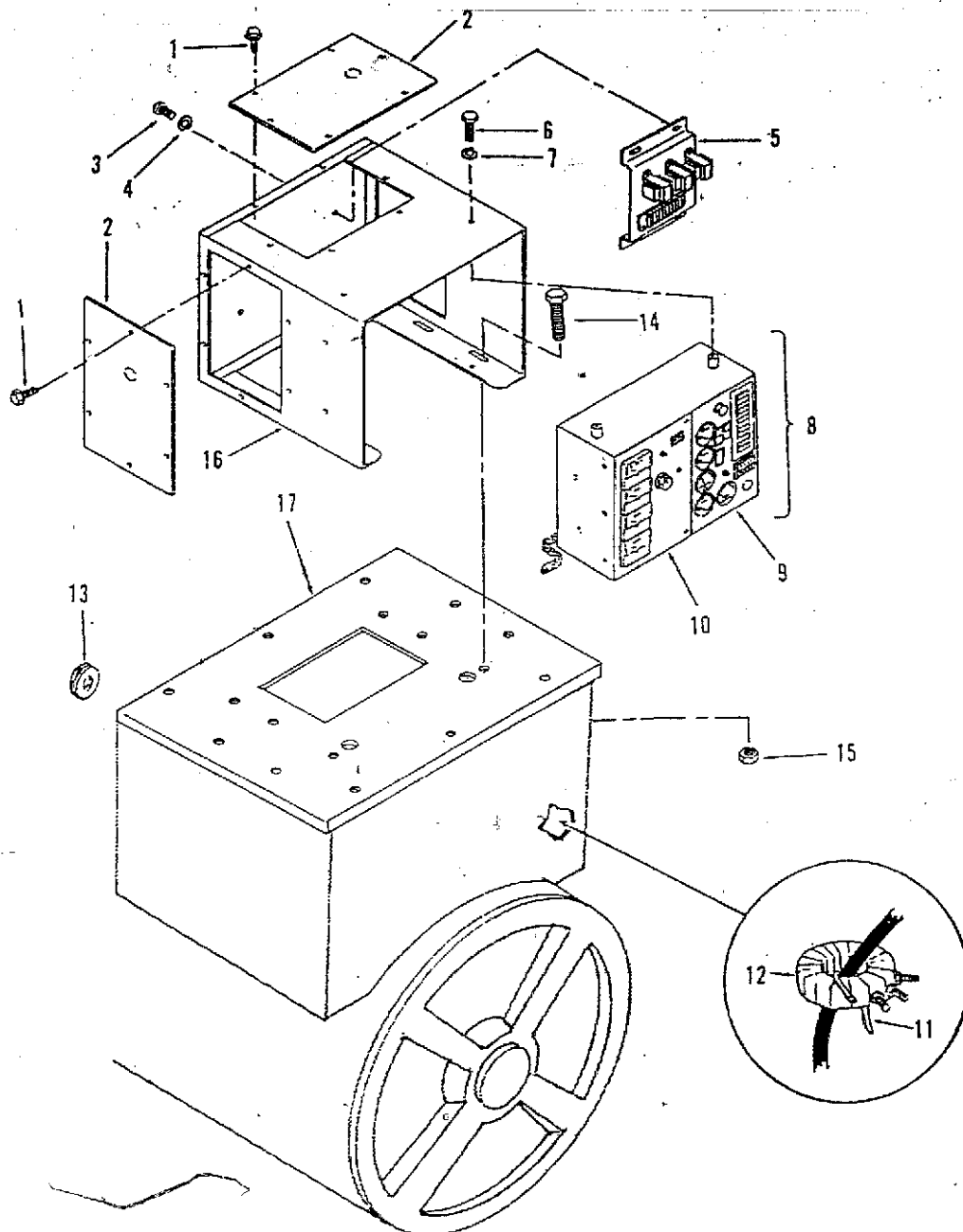
REF NO.	PART NO.	QTY USED	PART DESCRIPTION	REF NO.	PART NO.	QTY USED	PART DESCRIPTION
1	249-0497	1	Cover	4	249-0427	1	Rotor, Exciter
	249-0294	3	Attaching Parts for Cover		249-0644	1	Frame 2, 3, 4 Generators
	249-0307	3	Screw, Cap - Hex Head (M5 x 12mm)		249-0399	1	Frame 5, 6, 7 Generators
2	249-0496	3	Washer, Lock (M5)		249-0202	1	Attaching Parts for Rotor
3	249-0428	1	Pillar, Threaded		249-0313	1	Bolt
			Stator, Exciter with Frame				Washer, Lock (M10)
							Pin, Dowel

TABLE OF CONTENTS

SET CONTROLS

GENERATOR SET CONTROL (WITH HOUSING ENCLOSURE)	53
ENGINE CONTROL COMPONENTS (SETS WITH HOUSING ENCLOSURE)	55
GENERATOR CONTROL COMPONENTS (SETS WITH HOUSING ENCLOSURE)..	57
CONTROL HEATER (SETS WITH HOUSING ENCLOSURE)	58
POTENTIAL TRANSFORMER (SETS WITH HOUSING ENCLOSURE)	59
WATTMETER (SETS WITH HOUSING ENCLOSURE)	61
GENERATOR SET CONTROL (WITHOUT HOUSING ENCLOSURE).....	63
ENGINE CONTROL COMPONENTS (SETS WITHOUT HOUSING ENCLOSURE)..	65
GENERATOR CONTROL COMPONENTS(SETS WITHOUT HOUSING ENCLOSURE)	67

Generator Set Control (With Housing Enclosure)

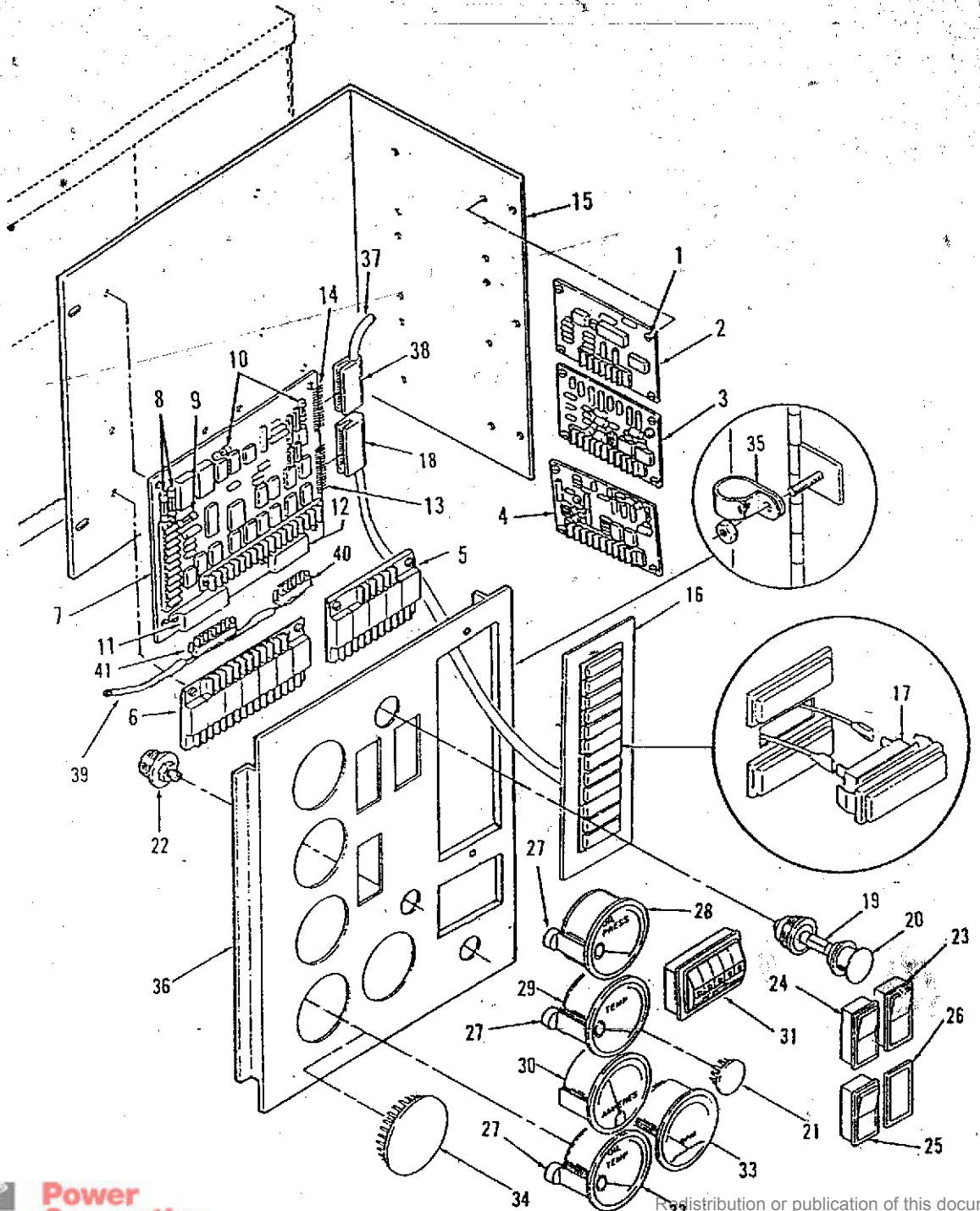


Generator Set Control (With Housing Enclosure)

REF NO.	PART NO.	QTY USED	PART DESCRIPTION	REF NO.	PART NO.	QTY USED	PART DESCRIPTION
1	821-0005	18	Screw, Self-locking - Hex (#10-32 x 1/2")	11	332-0941	6	Tie, Cable
2	NFS	3	Panel, Box - Control	12			Transformer, Current - Recon- nectible
3	812-0156	4	Screw, Machine - Round Head (1/4-20 x 1/2")		302-1794-11	3	750/1500:5 Ratio; 500kW & 600kW Voltage Code H.
4	850-0040	4	Washer, Lock - Spring (1/4")		302-1794-12	3	1000/2000:5 Ratio; 440kW & 550kW Voltage Code Z. 500kW Voltage Code L.
5	NFS	1	Transformer Assy, Potential (See Separate Page for Components)		302-1794-13	3	1500/3000:5 Ratio; 600kW Voltage Code L.
6	800-0051	4	Screw, Cap - Hex Head (5/16-18 x 1/2")	13	508-0051	1	Grommet
7	850-0045	4	Washer, Lock - Spring (5/16")	14	870-0212	6	Nut, Self-locking - Hex
8	NFS	1	Control, Set (See item 9 & 10 for Components)	15	821-0018	6	Screw, Self-locking - Hex Head (1/4-20 x 5/8")
9	NFS	1	Control, Engine (See Separate Page for Components)	16	NFS	1	Housing, Control
10	NFS	1	Control, Generator (See Sep- arate Page for Components)	17	NFS		Adapter, Housing to Terminal Box

NFS - Not For Sale

Engine Control Components (Sets with Housing Enclosure)



Engine Control Components (Sets with Housing Enclosure)

REF NO.	PART NO.	QTY USED	PART DESCRIPTION	REF NO.	PART NO.	QTY USED	PART DESCRIPTION
1	815-0544	24	Screw, Machine - Round Head With IT Lock Washer (#6-32 x 1/2")	17	322-0369-02	12	Lamp, Incandescent - 1/3 Watt 28 VDC
2	300-2899	1	Board, Time Delay, Start/Stop - 24 VDC (A15)	18	323-1310	1	Housing, 13 Pin (J3)
3			Board, Magnetic Sensor, Start Disconnect/Over Speed Sensor (A16)	19	322-0017	13	Contact, Pin
	300-2903	1	Standard	20	322-0361	1	Lamp, Incandescent - 28 VDC (OS11)
	300-2904	1	Precision	21	517-0131	1	Holder, Lamp
4	300-2906	1	Board, Over-Under Voltage Sensor - 24 VDC (A17)	22	303-0280	1	Plug, Button
5	300-2856	1	Board, Relay - 24 VDC (A13)	23	308-0785	1	Potentiometer (R11)
6	300-2863	1	Board, Relay - 24 VDC (A14)	24	308-0784	1	Switch, Push (S11)
7			Board, Engine Monitor (A11) (Includes Fuses and Connectors)	26	301-6257	1	Switch, Push (S12)
	300-2808	1	24 VDC, 2 Light	27	193-0250	1	Cover
	300-2812	1	24 VDC, 12 Light	28	193-0352	3	Resistor, Gauge (R12)
8	321-0270	2	Fuse, Cartridge - 20 Amp (F1, F2)	29	193-0351	1	Gauge, Pressure - Oil (M11)
9	321-0231	1	Fuse, Cartridge - 15 Amp (F3)	30	302-1790	1	Gauge, Temperature - Water (M12)
10	321-0094	2	Fuse, Cartridge - 5 Amp (F4, F5)	31	302-0885	1	Ammeter (M13)
11	323-1305	1	Connector, 8 Pin (P1)		815-0385	2	Meter, Totalizing - Time (M14)
12	323-1303	1	Connector, 6 Pin (P2)		870-0183	2	Screw, Machine - Round Head (#6-31 x 1/2")
13	323-1309	1	Connector, 13 Pin (P3)	32	193-0330	1	Nut, Hex with ET Lockwasher (#6-32)
14	323-1307	1	Connector, 12 Pin (P4)				Gauge, Temperature - Oil (M15)
15	NFS	1	Bracket, Mounting	33	302-1873-01	1	Tachometer (M16)
	821-0004	4	Screw, Self-locking - Hex Hd (#10-32 x 5/16")	34	517-0221	1	Plug, Button
16			Module, Indicator - Fault (Includes replaceable lamps, Harness with connector housing & contact pins)(A12)	35	332-0052	1	Clamp, Loop
	322-0358-02	1	24 VDC, 2 Light		870-0131	1	Nut, Hex with ET Lockwasher (#10-32 x 1/2")
	322-0360-02	1	24 VDC, 12 Light	36	NFS		Door, Control
	815-0385	2	Screw, Machine - Round Head (#6-32 x 1/2")	37	338-1817	1	Harness, Wiring - DC Meter (Includes Connector & Pins)
	870-0183	2	Nut, Self-locking - Hex (#6-32)	38	323-1308	1	Housing, 12 Pin (J4)
				39	323-1302	12	Contact, Pin
					338-2168	1	Contact, Pin
				40	323-1304	1	Harness, Wiring - Control to Engine (Includes Connectors and Pins)
					323-1200	6	Housing, 6 Pin
				41	323-1306	1	Contact, Pin
					323-1200	8	Housing, 8 Pin
							Contact, Pin

NFS - Not For Sale

**Generator Control Components
(Sets with Housing Enclosure)**

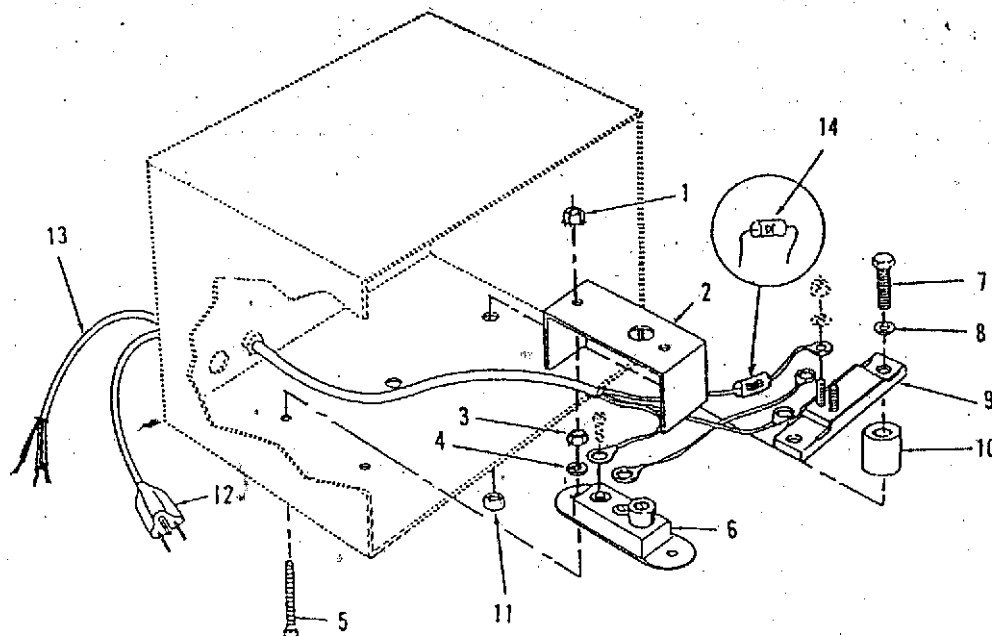
1. Terminal block
2. Wire
3. Wire
4. Wire
5. Relay
6. Fuse
7. Switch
8. Potentiometer
9. Resistor
10. Capacitor
11. Diode
12. Transistor
13. Motor
14. Fan
15. Bracket
16. Housing
17. Control panel
18. Terminal block
19. Wire
20. Wire
21. Wire
22. Wire
23. Wire
24. Wire
25. Wire
26. Wire
27. Wire
28. Wire
29. Wire
30. Wire
31. Wire
32. Wire

Generator Control Components (Sets with Housing Enclosure)

REF NO.	PART NO.	QTY USED	PART DESCRIPTION	REF NO.	PART NO.	QTY USED	PART DESCRIPTION
1	332-1445	2	Tie, Cable	14	308-0284	1	Switch, Rotary (S21)
2	338-1818	1	Harness, Wiring	15	303-0261	1	Rheostat (R21)
	338-1853	1	Control with Meters	16	406-0334	2	Clip, Fastener
	812-0065	2	(Includes Terminal Block)	17	406-0333	2	Stud, Fastener
			Control without Meters	18	NFS	1	Door, Control
3	332-0807	1	Screw, Machine - Round Head		82140004	3	Screw, Self-locking - Hex
4	332-2723	1	(#6-32 x 5/8")				(#10-32 x 5/16")
5	322-0363	1	Block, Terminal (T81)	19	307-1987	2	Clip, Relay
6	517-0131	1	Strip, Marker	20	307-1056	1	Relay, 24 VDC (K21)
7			Light, Indicator - Dual	21	323-0804	1	Socket, Relay
			(DS21, DS22)		815-0544	2	Screw, Machine - Round Head
			Plug, Button				with IT Lock Washer
			Voltmeter (M21)				(#6-32 x 1/2")
	302-1148	1	Dual Scale 0-300/0-600V	22	NFS	1	Terminal Board Assembly
	302-1753	1	Single Scale 0-750V		812-0065	4	Screw, Machine - Round Head
8	303-0032	1	Knob				(#6-32 x 5/8")
9			Ammeter (M22)	23	332-0751	1	Block, Terminal
			Single Scale Voltage Code H		812-0066	2	Screw, Machine - Round Head
	302-1731	1	500 & 600kW, 0-750 Amp				(#6-32 x 3/4")
			Dual Scale Voltage Code Z	24	332-0853	1	Strip, Marker
	302-1798	1	440 & 550kW, 0-1000/0-2000	25	NFS	1	Plate
			Amp, all voltages	26	406-0332	2	Receptacle, Fastener
			Dual Scale Voltage Code L	27	871-0015	1	Nut, Hex (1/4-20)
	302-1798	1	500kW, 0-1000/0-2000 Amp,	28	853-0013	1	Washer, Lock - ET (1/4")
			all voltages	29	337-0049	1	Strap, Electrical (Ground)
	302-1799	1	600kW, 0-1500/0-3000 Amp,		800-0024	1	Screw, Cap - Hex Head
			all voltages				(5/16-18 x 1/2")
10	302-1720	1	Meter, Frequency (M23)		856-0008	1	Washer, Lock - EIT (5/16")
11			Wattmeter (M24) (See	30	508-0051	1	Grommet
			Separate page for Components)	31	402-0527	2	Mount, Vibration
12	NFS	1	Cover, Meter Hole		800-0051	4	Screw, Cap - Hex Head
	815-0385	2	Screw, Machine - Round Head,				(5/16-18 x 1/2")
			Black (#6-32 x 1/2")		850-0045	4	Washer, Lock - Spring
	870-0183	2	Nut, Hex with ET Lockwasher				(5/16")
			(#6-32)	32	NFS	1	Box, Control
13	332-0052	1	Clamp, Loop				
	870-0131	1	Nut, Self-locking - Hex with				
			ET Lock Washer (#10-32)				

NFS - Not For Sale

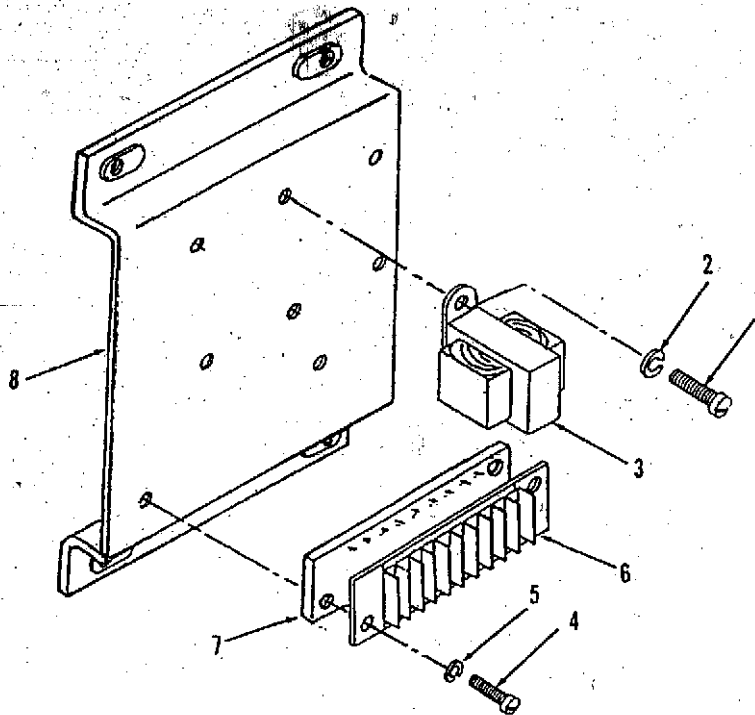
Control Heater



REF NO.	PART NO.	QTY USED	PART DESCRIPTION
1	870-0183	2	Nut, Self-locking - Hex (#6-32)
2	301-1886	1	Cover
3	860-0006	1	Nut, Hex (#6-32)
4	854-0006	2	Washer, Lock - IT (#6)
5	812-0070	2	Screw, Machine - Round Head (#6-32 x 1-1/4")
6	309-0128	1	Thermostat, Adjustable
7	800-0034	2	Screw, Cap - Hex Head (5/16-18 x 2-1/4")
8	526-0113	2	Washer, Flat (5/16")

REF NO.	PART NO.	QTY USED	PART DESCRIPTION
9	333-0151	1	Heater, Electrical 120VAC
	333-0378	1	240VAC
10	130-1107	2	Spacer
11	870-0257	2	Nut, Self-locking - Hex (5/16-18)
12	335-0161	1	Cable, Electrical (120VAC Application)
13	338-2121	1	Harness Wiring with Diode, less plug (240VAC Application)
14	357-0013	1	Diode
15	98-3232	1	Decal, Warning - Shock Hazard (Not Illustrated)

Potential Transformer

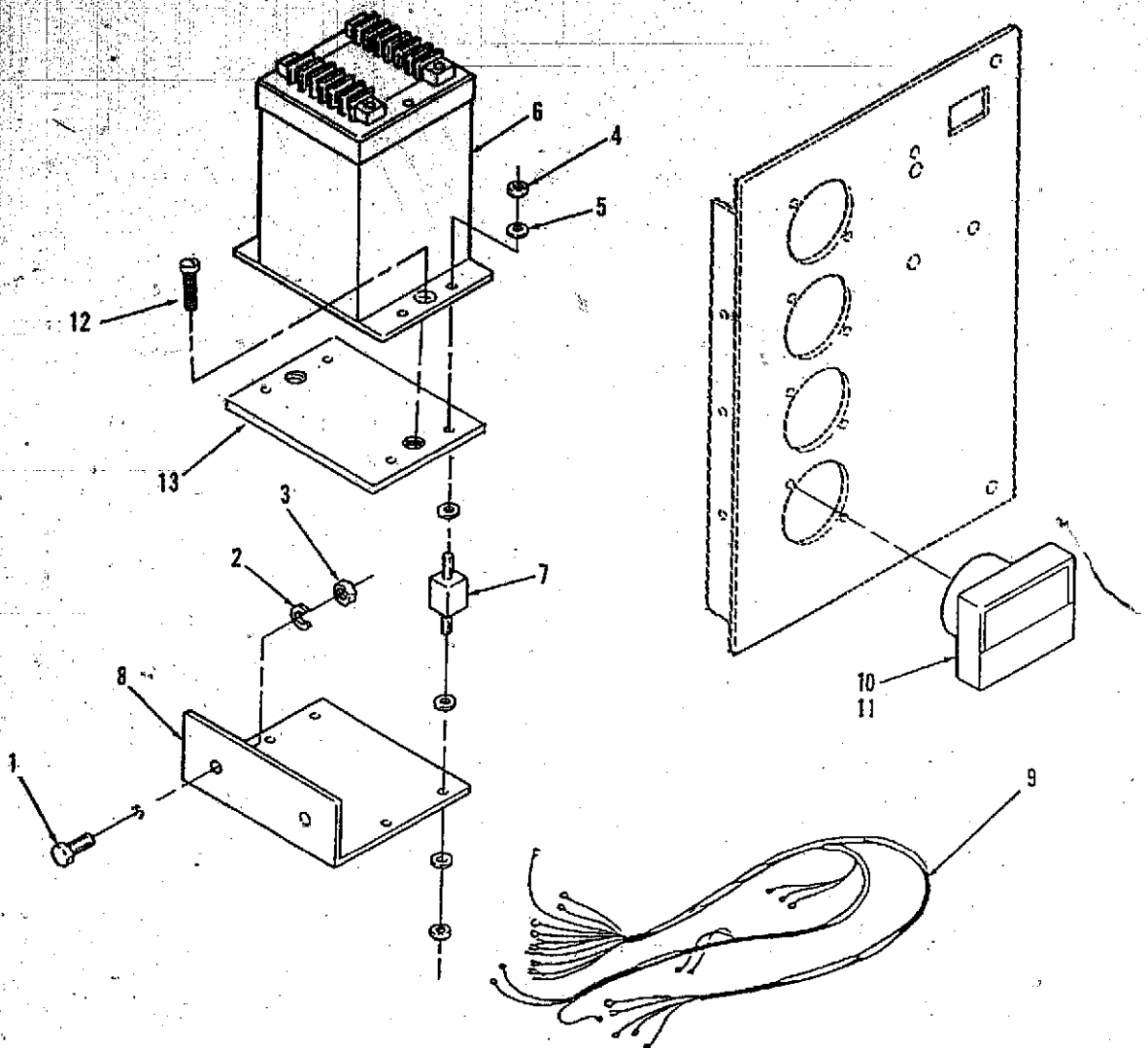


REF NO.	PART NO.	QTY USED	PART DESCRIPTION
1	812-0079	6	Screw, Machine - Round Head (#8-32 x 1/2")
2	850-0025	6	Washer, Lock - Spring (#8)
3	315-0642	3	Transformer, Potential
4	812-0077	2	Screw, Machine - Round Head (#8-32 x 3/8")

REF NO.	PART NO.	QTY USED	PART DESCRIPTION
5	850-0025	2	Washer, Lock - Spring (#8)
6	332-2562	1	Block, Terminal (10 Place)
7	332-2563	1	Strip, Marker
8	NFS	1	Bracket, Mounting

NFS - Not For Sale

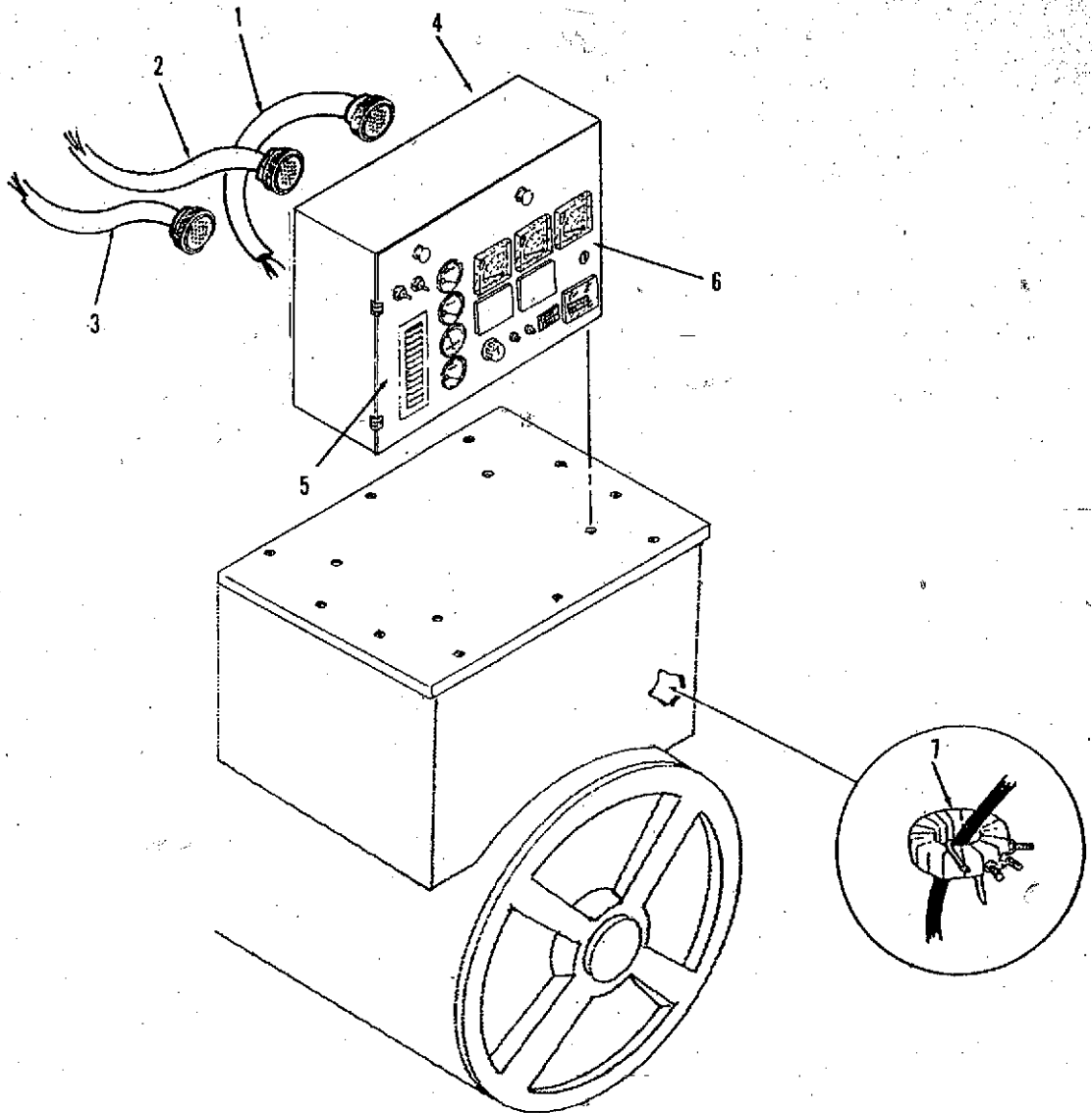
Wattmeter (Sets with Housing Enclosure)



REF NO.	PART NO.	QTY USED	PART DESCRIPTION
1	821-0017	2	Screw, Cap - Hex Head (5/16-18 x 1/2")
2	850-0045	2	Washer, Lock (5/16)
3	862-0014	2	Nut, Hex (5/16-18)
4	860-0008	8	Nut, Hex (#8-32)
5	856-0002	16	Washer, Lock - ET (#8)
6	302-1833-01	1	Transducer, Watt
7	402-0354	4	Mount, Shock

REF NO.	PART NO.	QTY USED	PART DESCRIPTION
8	301-6987	1	Bracket, Mounting
9	338-1936	1	Harness, Wiring
10	302-1722	1	Wattmeter (Less Dial)
11	302-1721-14	1	Dial, Wattmeter
	302-1721-15	1	Scale 0-600 kW
	302-1721-15	1	Scale 0-700 kW
12	813-0102	2	Screw, Machine - Round Head (#10-32 x 3/8")
13	319-0030	1	Plate, Support - Transducer

**Generator Set Control
(Without Housing Enclosure)**

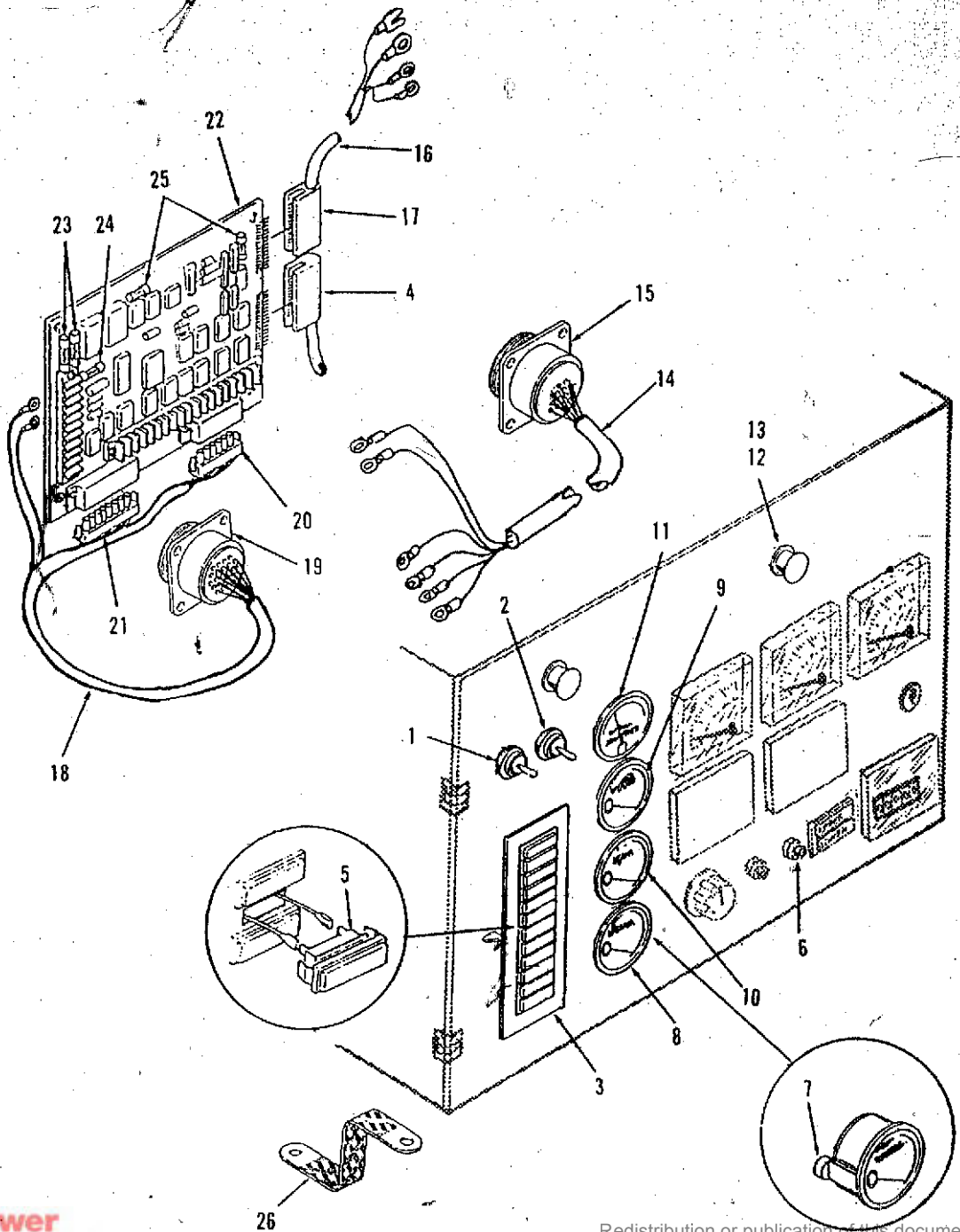


Generator Set Control (Without Housing Enclosure)

REF NO.	PART NO.	QTY USED	PART DESCRIPTION	REF NO.	PART NO.	QTY USED	PART DESCRIPTION
1	338-2200-01	1	Harness, Wiring - Control to Generator (Includes a connector housing)	7			Transformer, Current (Select As Applicable)
	323-1135	1	Housing, Connector (J21)		302-1785-01	3	1200:5 Ratio
	323-1193	4	Contact, Pin		302-1785-02	3	1500:5 Ratio
	323-1194	10	Contact, Pin		302-1785-03	3	1600:5 Ratio
2	338-2197-01	1	Harness, Wiring - Control to Governor (Includes a connector housing)		302-1785-04	3	2000:5 Ratio
	323-1135	1	Housing, Connector (J12)		302-1785-05	3	2500:5 Ratio
	323-1193	4	Contact, Pin		302-1785-06	3	2000:5 Ratio (380V Only)
	323-1194	10	Contact, Pin		302-1785-07	3	3000:5 Ratio
3	338-2192-01	1	Harness, Wiring - Control to Engine Components (Includes a connector housing)		302-1785-08	3	4000:5 Ratio
	323-1206	1	Housing, Connector (J11)		302-1785-09	3	5000:5 Ratio
	323-1194	20	Contact, Pin		302-1786-01	3	500/1000:5 Ratio
4	NFS	1	Control, Set (See item 5 & 6 for Components)		302-1786-02	3	600/1200:5 Ratio
	402-0527	4	Attaching Parts for Control Mount, Vibration		302-1786-03	3	750/1500:5 Ratio
	800-0051	8	Screw, Cap - Hex Head (5/16-18 x 1/2")		302-1786-04	3	800/1600:5 Ratio
	850-0045	8	Washer, Lock - Spring (5/16")		302-1786-05	3	900/1800:5 Ratio
5	NFS	1	Control, Engine (See Separate Page for Components)		302-1786-06	3	1000/2000:5 Ratio
6	NFS	1	Control, Generator (See Separate Page for Components)		302-1786-07	3	1200/2400:5 Ratio
					302-1786-08	3	250/500:5 Ratio
					302-1786-09	3	300/600:5 Ratio
					302-1786-10	3	400/800:5 Ratio
					302-1786-11	3	375/750:5 Ratio
					302-1786-12	3	75/150:5 Ratio
					302-1786-13	3	100/200:5 Ratio
					302-1786-14	3	150/300:5 Ratio
					302-1786-15	3	200/400:5 Ratio
					302-1786-16	3	1500/3000:5 Ratio

NFS - Not For Sale

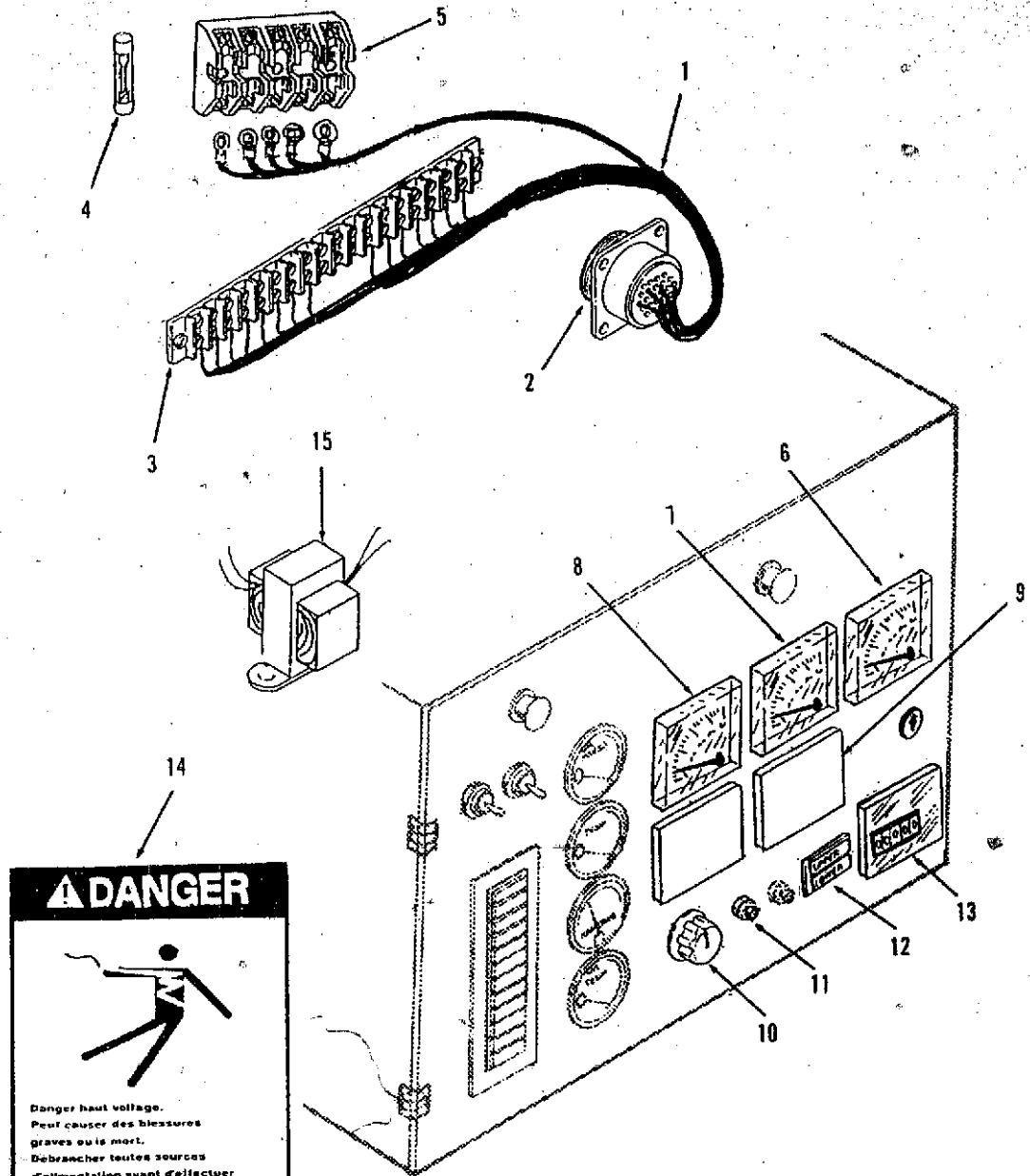
Engine Control Components (Sets with Housing Enclosure)




Engine Control Components (Sets with Housing Enclosure)

REF NO.	PART NO.	QTY USED	PART DESCRIPTION	REF NO.	PART NO.	QTY USED	PART DESCRIPTION
1	308-0625	1	Switch, Push (S12) [Run/Stop/Remote]	15	323-1134	1	Housing, Connector (P12)
2	308-0900	1	Switch, Push (S11) [Reset/Panel Light]		323-1192	4	Contact, Socket
3			Module, Indicator - Fault (Includes Harness with a Connector Housing & Contact Pins, Replaceable Lamps) (A12)		323-1195	10	Contact, Socket
	322-0358-02	1	24 VDC, 2 Light	16	338-1817	1	Harness, Wiring - Engine Monitor Board to Meters (Includes Connector Housing)
	322-0360-02	1	24 VDC, 12 Light				
	815-0385	2	Attaching Parts for Module Screw, Machine - Round Head (#6-32 x 1/2")	17	323-1308	1	Housing, Connector (J4)
	870-0183	2	Nut, Self-locking - Hex (#6-32)	18	323-1302	15	Contact, Pin
4	323-1310	1	Housing, Connector (J3)		338-2244-01	1	Harness, Wiring - Engine to Engine Monitor Board (Includes Connector Housings, Terminals and Contacts)
	323-1302	13	Contact, Pin		338-2422-01	1	Control with 2 Light Module
5	322-0369-02	1	Lamp, Incandescent - 1/3 Watt 28 VDC	19	323-1207	1	Control with 12 Light Module
6	303-0289	1	Rheostat - Speed Control (R23)		323-1195	22	Housing, Connector (P11)
7	193-0250	3	Resistor, Gauge (R11, R12, R15)		323-1190	1	Contact, Socket
8	193-0330	1	Gauge, Temperature - Oil, 12 VDC (M15) or	20	323-1304	1	Key
	302-1715	1	Tachometer (M16) or		323-1200	6	Housing, Connector (J2)
	302-1723	1	Gauge, Blank	21	323-1306	1	Contact, Pin
9	193-0351	1	Gauge, Temperature - Water, 12 VDC (M12)	22	323-1200	8	Housing, Connector (J1)
10	193-0352	1	Gauge, Pressure - Oil, 12 VDC (M11)				Contact, Pin
11	302-1790	1	Ammeter (M13)		300-2808	1	Board, Engine Monitor (A11) (Includes Fuses)
12	322-0017	1	Lamp, Incandescent - 28 VDC (DS10, DS11)		300-2812	1	24 VDC, 2 Light
13	322-0361	2	Holder, Lamp	23	321-0270	2	24 VDC, 12 Light
14			Harness, Wiring - Governor to Speed Control & Tachometer (Includes Connector Housing)				Fuse, Cartridge - 20 Amp (F1, F2)
	338-2245-01	1	Control with 2 Light Module	24	321-0231	1	Fuse, Cartridge - 15 Amp (F3)
	338-2243-01	1	Control with 12 Light Module	25	321-0094	2	Fuse, Cartridge - 5 Amp (F4, F5)
					815-0544	4	Attaching Parts for Module Screw, Machine - Round Head With IT Lock Washer (#6-32 x 1/2")
				26	337-0049	1	Strap, Electrical - Ground

Generator Control Components (Sets without Housing Enclosure)



⚠ DANGER



Danger haut voltage.
Peut causer des blessures graves ou la mort.
Débrancher toutes sources d'alimentation avant d'effectuer des réparations.

Hazardous voltage.
Will cause severe injury or death.
Disconnect all electrical supply.

Generator Control Components (Sets without Housing Enclosure)

REF NO.	PART NO.	QTY USED	PART DESCRIPTION	REF NO.	PART NO.	QTY USED	PART DESCRIPTION	
1			Harness, Wiring (Includes Connector and Terminal Strip)	302-1839-09	1	0-300/0-600 Amp		
	338-2240-01	1	Sets with 12 Lead Generator	302-1839-10	1	0-400/0-800 Amp		
	338-2241-01	1	Sets with 6 Lead Generator	302-1839-11	1	0-375/0-750 Amp		
2	323-1134	1	Housing, Connector (P21)	302-1839-12	1	0-75/0-150 Amp		
	323-1192	4	Contact, Socket	302-1839-13	1	0-100/0-200 Amp		
	323-1195	10	Contact, Socket	302-1839-14	1	0-150/0-300 Amp		
	323-1190	1	Key	302-1839-15	1	0-200/0-400 Amp		
3		1	Terminal Strip (18 Place)	302-1839-16	1	0-1500/0-3000 Amp		
4	321-0293	5	Fuse F1 thru F5	302-1839-17	1	0-2000/0-4000 Amp		
5	321-0294	1	Holder, Fuse	302-1840-01	1	0-1200 Amp		
6	302-1842	1	Meter, Frequency (M23)	302-1840-02	1	0-1500 Amp		
7	302-1841-03	1	Voltmeter (M21)	302-1840-03	1	0-1600 Amp		
8			Ammeter (M22)	302-1840-04	1	0-2000 Amp		
			Dual Scale	302-1840-05	1	0-2500 Amp		
	302-1839-01	1	0-500/0-1000 Amp	302-1840-07	1	0-3000 Amp		
	302-1839-02	1	0-600/0-1200 Amp	302-1840-08	1	0-4000 Amp		
	302-1839-03	1	0-750/0-1500 Amp	302-1840-09	1	0-5000 Amp		
	302-1839-04	1	0-800/0-1600 Amp	9	302-1849	2	Meter, Blank	
	302-1839-05	1	0-900/0-1800 Amp	10	308-0883	1	Switch, Rotary (S21)	
	302-1839-06	1	0-1000/0-2000 Amp	11	303-0287	1	Rheostat (R21)	
	302-1839-07	1	0-1200/0-2400 Amp	12	322-0363	1	Light, Indicator - Dual (DS21, DS22)	
	302-1839-08	1	0-250/0-500 Amp	13	302-1850	1	Meter, Time Totalizing (M14)	
				14	98-5724	2	Decal (Warning)	
				15	315-0664	3	Transformer, Potential (T21 - T23)	
-cont-								

-cont-