

The following catalog
has gaps in its page
numbers, or doesn't
have any numbers.
We have chosen to
leave the page
numbering in the
order that Acrobat
assigns it.

PARTS CATALOG

FOR



ELECTRIC GENERATING PLANTS

CK SERIES

ONAN

1400 73RD AVENUE N. E. • MINNEAPOLIS, MINNESOTA 55432

A DIVISION OF STUDEBAKER CORPORATION

IN CANADA: Guelph, Ontario • N.Y. INTERNATIONAL OFFICE: Empire State Bldg.

INSTRUCTIONS FOR ORDERING REPAIR PARTS

FOR PARTS OR SERVICE, CONTACT THE DEALER FROM WHOM
YOU PURCHASED THIS EQUIPMENT OR REFER TO YOUR NEAR-
EST AUTHORIZED SERVICE STATION.

TO AVOID ERRORS OR DELAY IN FILLING YOUR PARTS ORDER, PLEASE
FURNISH ALL INFORMATION REQUESTED.

REFER TO THE NAMEPLATE ON YOUR PLANT

1. Always give the MODEL & SPEC. NO. and SERIAL NO.

ELECTRIC Onan PLAN

MODEL AND SPECIFICATION NO. SERIAL NO.

IMPORTANT MENTION ABOVE NUMBERS AND GEN. DATA WHEN ORDERING PARTS OR WRITING ABOUT THIS PLANT

RATINGS AT SEA LEVEL BASED ON FUEL CHECKED BELOW:

GASOLINE	DIESEL FUEL			
STAND BY	KW	KVA	AMPS	
CONTINUOUS	KW	KVA	AMPS	
A.C. VOLTS	CYCLES	PHASE	P.F.	
EXCITER	GEN. DATA			
R.P.M.	USE	VOLT BATTERY-NEGATIVE GROUND		

MANUFACTURED BY
ONAN
MINNEAPOLIS, MINNESOTA
MADE IN U.S.A.

For handy reference, copy **YOUR** plant
nameplate information in the spaces above.

2. Do not order by reference number or group number, use part number and description.
3. Give the part number, description and quantity needed of each item. If an old part cannot be identified, return the part prepaid to your dealer or nearest AUTHORIZED SERVICE STATION. Print your name and address plainly on the package. Write a letter to the same address stating the reason for returning the part.
4. State definite shipping instructions.

Any claim for loss or damage to your unit in transit should be filed promptly against the transportation company making the delivery. Shipments are complete unless the packing list indicates items are back ordered.

"Prices are purposely omitted from this Parts Catalog due to the confusion resulting from fluctuating costs, import duties, sales taxes, exchange rates, etc.

For Current parts prices, consult your Onan Dealer, Distributor or Parts and Service Center."

"En esta lista de partes los precios se omiten de proposito, ya que bastante confusion resultado de fluctuaciones de los precios, derechos aduanales, impuestos de venta, cambios extranjeros etc.

Consiga los precios vigentes de su distribuidor de productos "ONAN".

PARTS CATALOG

1

This parts catalog applies to the standard CK Generating Plants as listed in the Plant Data Table.

Parts are illustrated and identified by corresponding reference numbers in the Parts List. Parts illustrations represent typical items and do not necessarily portray a particular part number.

Compare your plant nameplate MODEL and SPEC. NO. with the Plant Data Table. Select the Parts Key No. (1, 2 etc. in the last column) that applies to your plant Model and Spec. No. This Parts Key No. appears in the description of parts that differ between models. Unless otherwise mentioned in the parts description, parts are interchangeable between the various models.

PLANT DATA TABLE

MODEL DESIGNATION		TYPE OF PLANT	ELECTRICAL OUTPUT				PARTS KEY NO.
60 CYCLE	50 CYCLE		WATTS	VOLTS	CYCLES	PHASE	
2CK-1M/	2CK-51M/	MANUAL	2000	115	SEE	1	1
2CK-2M/	2CK-52M/	MANUAL	2000	230	MODEL	1	1
3CK-1M/	3CK-51M/	MANUAL	3000	115	DESIGNATION	1	1
3CK-2M/	3CK-52M/	MANUAL	3000	230	COLUMN	1	1
3CK-3M/	3CK-53M/	MANUAL	3000	115/230		1	1
3CK-5M/		MANUAL	3000	230		3	1
305CK-1M/	305CK-51M/	MANUAL	3500	115		1	1
305CK-2M/	305CK-52M/	MANUAL	3500	230		1	1
305CK-3M/		MANUAL	3500	115/230		1	1
305CK-5M/		MANUAL	3500	230		3	1
2CK-1P/	2CK-51P/	PORTABLE	2000	115	SEE	1	2
3CK-1P/	3CK-51P/	PORTABLE	3000	115	MODEL	1	2
3CK-2P/	3CK-52P/	PORTABLE	3000	230	DESIGNATION	1	2
3CK-3P/	3CK-53P/	PORTABLE	3000	115/230	COLUMN	1	2
305CK-1P/	305CK-51P/	PORTABLE	3500	115		1	2
305CK-2P/	305CK-52P/	PORTABLE	3500	230		1	2
305CK-3P/	305CK-53P/	PORTABLE	3500	115/230		1	2
305CK-5P/		PORTABLE	3500	230		3	2
2CK-1R/	2CK-51R/	REMOTE	2000	115	SEE	1	3
2CK-2R/	2CK-52R/	REMOTE	2000	230	MODEL	1	3
3CK-1R/	3CK-51R/	REMOTE	3000	115	DESIGNATION	1	3
3CK-2R/	3CK-52R/	REMOTE	3000	230	COLUMN	1	3
3CK-3R/	3CK-53R/	REMOTE	3000	115/230		1	3
3CK-4R/		REMOTE	3000	120/208		3	3
3CK-5R/		REMOTE	3000	230		3	3
305CK-1R/	305CK-51R/	REMOTE	3500	115		1	3
305CK-2R/	305CK-52R/	REMOTE	3500	230		1	3
305CK-3R/	305CK-53R/	REMOTE	3500	115/230		1	3
305CK-4R/		REMOTE	3500	120/208		3	3
305CK-5R/	305CK-55R/	REMOTE	3500	230		3	3
305CK-6R/		REMOTE	3500	460		3	3
3CK-1R4/		REMOTE	3000	115 AC 32 DC	SEE MODEL DESIGNATION COLUMN	1	4
3CK-115P/		PORTABLE	3000	115	DC	-	5
3CK-123P/▲		PORTABLE	3000	230	DC	-	5
5CK-115P/		PORTABLE	5000	115	DC	-	5
5CK-123P/▲		PORTABLE	5000	230	DC	-	5
3CK-123R/▲		REMOTE	3000	230	DC	-	6
5CK-115R/		REMOTE	5000	115	DC	-	6
5CK-123R/▲		REMOTE	5000	230	DC	-	6
3CK-123M/▲		MANUAL	3000	230	DC	-	7
5CK-115M/		MANUAL	5000	115	DC	-	7
5CK-123M/▲		MANUAL	5000	230	DC	-	7
305CK-210E/		ELECTRIC	3500	110-140	DC	-	8
305CK-232E/■		ELECTRIC	3500	32	DC	-	8
305CK-232R/■		REMOTE	3500	32	DC	-	9

▲ = Models with the following Specification NUMBERS are designed for Magnet use.

- 3CK-123P/335 - Parts Key No. 5 (Plants with other than 335 Spec. No. are NON-Magnet Models).
- 5CK-123P/335 - Parts Key No. 5 (Plants with other than 335 Spec. No. are NON-Magnet Models).
- 3CK-123R/337 - Parts Key No. 6 (Plants with other than 337 Spec. No. are NON-Magnet Models).
- 5CK-123R/337 - Parts Key No. 6 (Plants with other than 337 Spec. No. are NON-Magnet Models).
- 3CK-123M/334 or 354 - Parts Key No. 7 (Plants with other than 334 or 354 Spec. No. are NON-Magnet Models).
- 5CK-123M/334 or 354 - Parts Key No. 7 (Plants with other than 334 or 354 Spec. No. are NON-Magnet Models).

■ = Models with the following Specification NUMBERS are mounted in PORTABLE Style Housing. Select related parts shown for Portable Type Plants (Parts Key 5). Related Parts are: Housing plus Oil Base, Oil Intake Cup, Oil Indicator, Oil Base Studs, Drain Nipple and Plug, Generator Support, Mounting Cushions, Carry-
ing Frame, Weatherhood, etc.

305CK-232E/364 - Parts Key No. 8 (Plants with other than 364 Spec. No. are NOT Mounted in Portable Style Housing).

305CK-232R/360 - Parts Key No. 9 (Plants with other than 360 Spec. No. are NOT Mounted in Portable Style Housing).



**Power
Generation**

Redistribution or publication of this document by any means, is strictly prohibited.

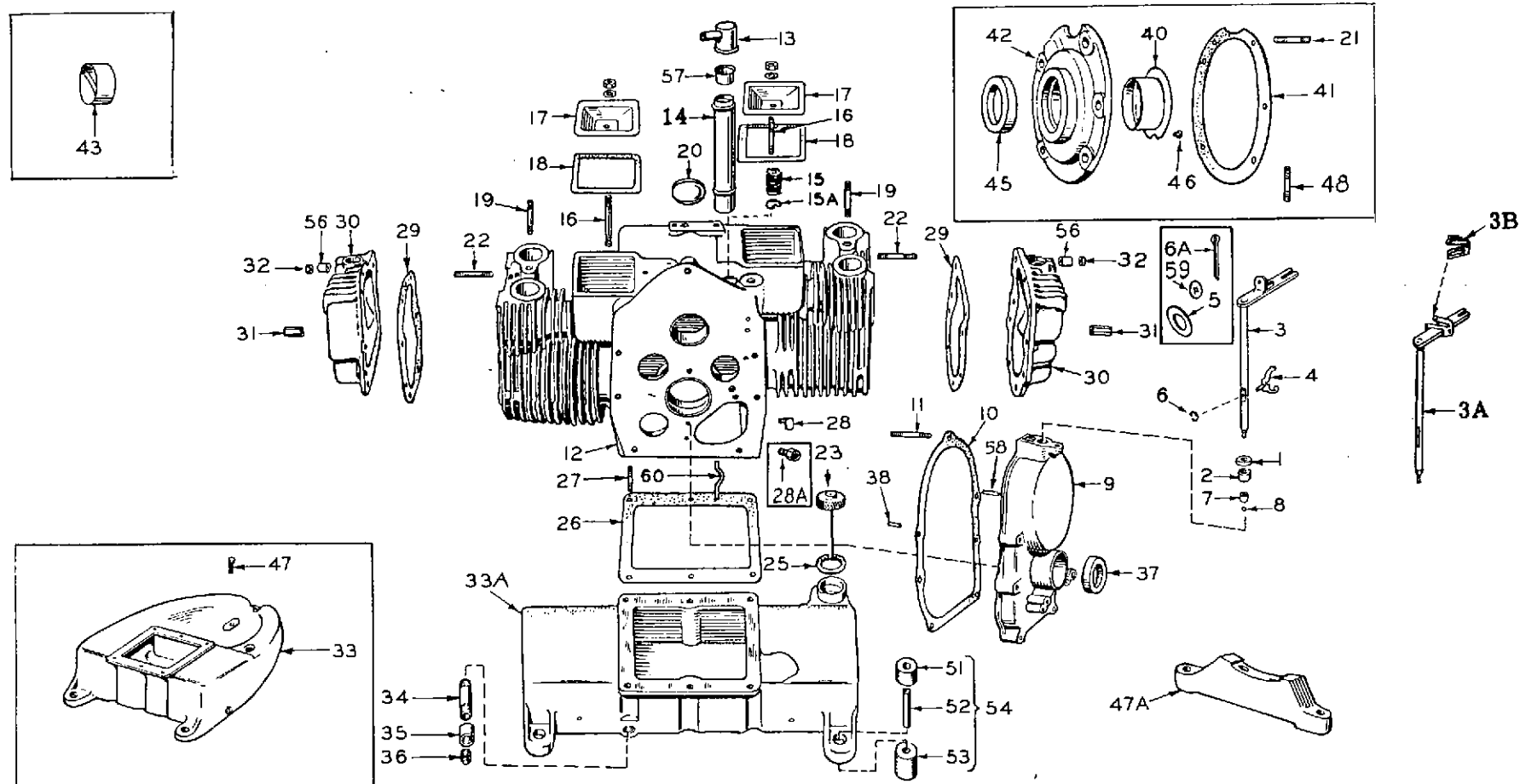


FIG. A - CYLINDER BLOCK, OIL BASE & GEAR COVER GROUP.

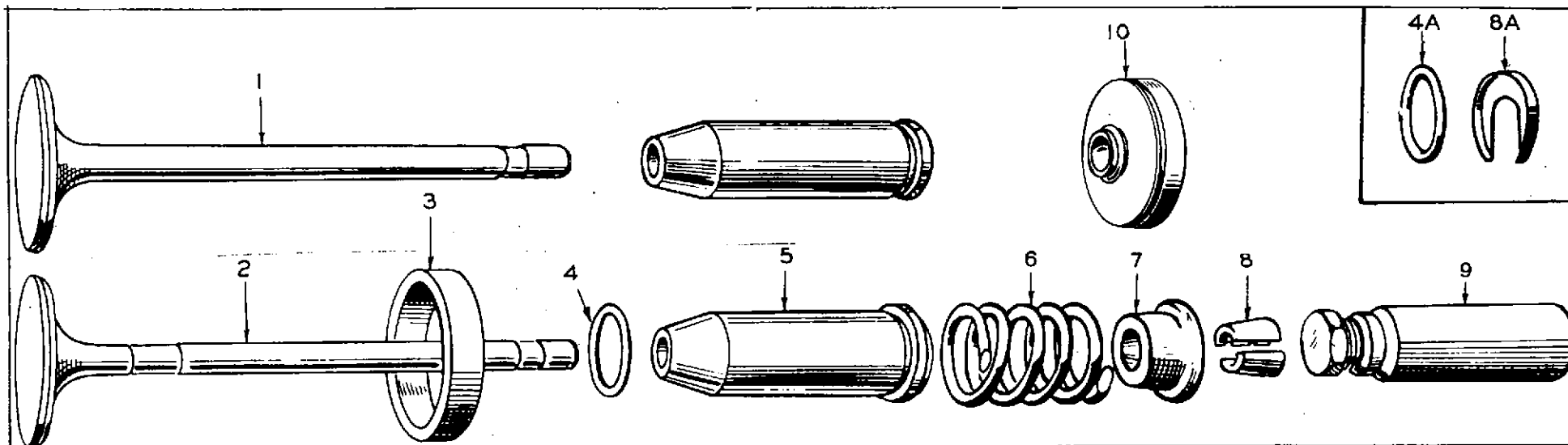


FIG. B - VALVE GROUP

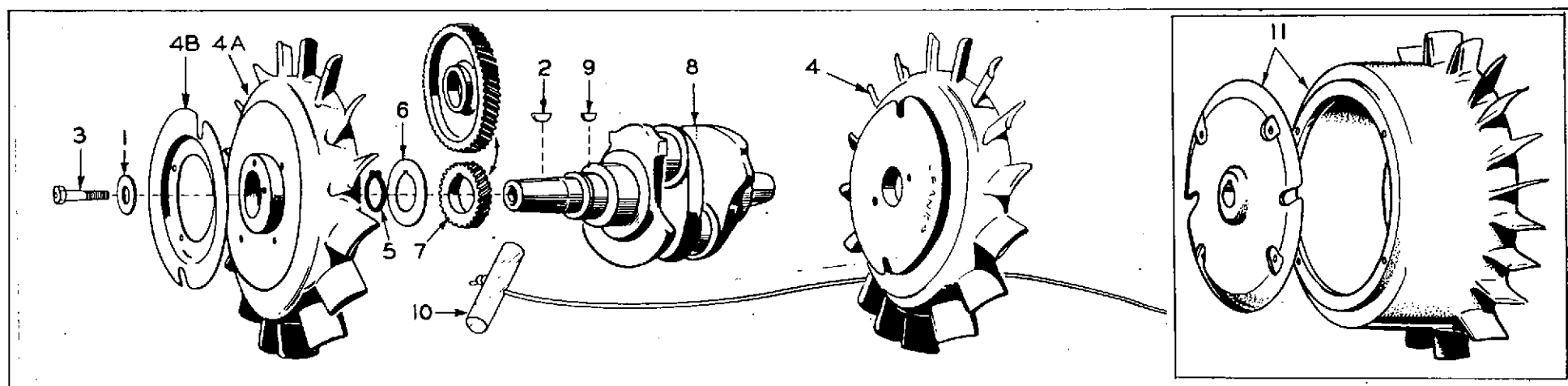


FIG. C - CRANKSHAFT & FLYWHEEL GROUP

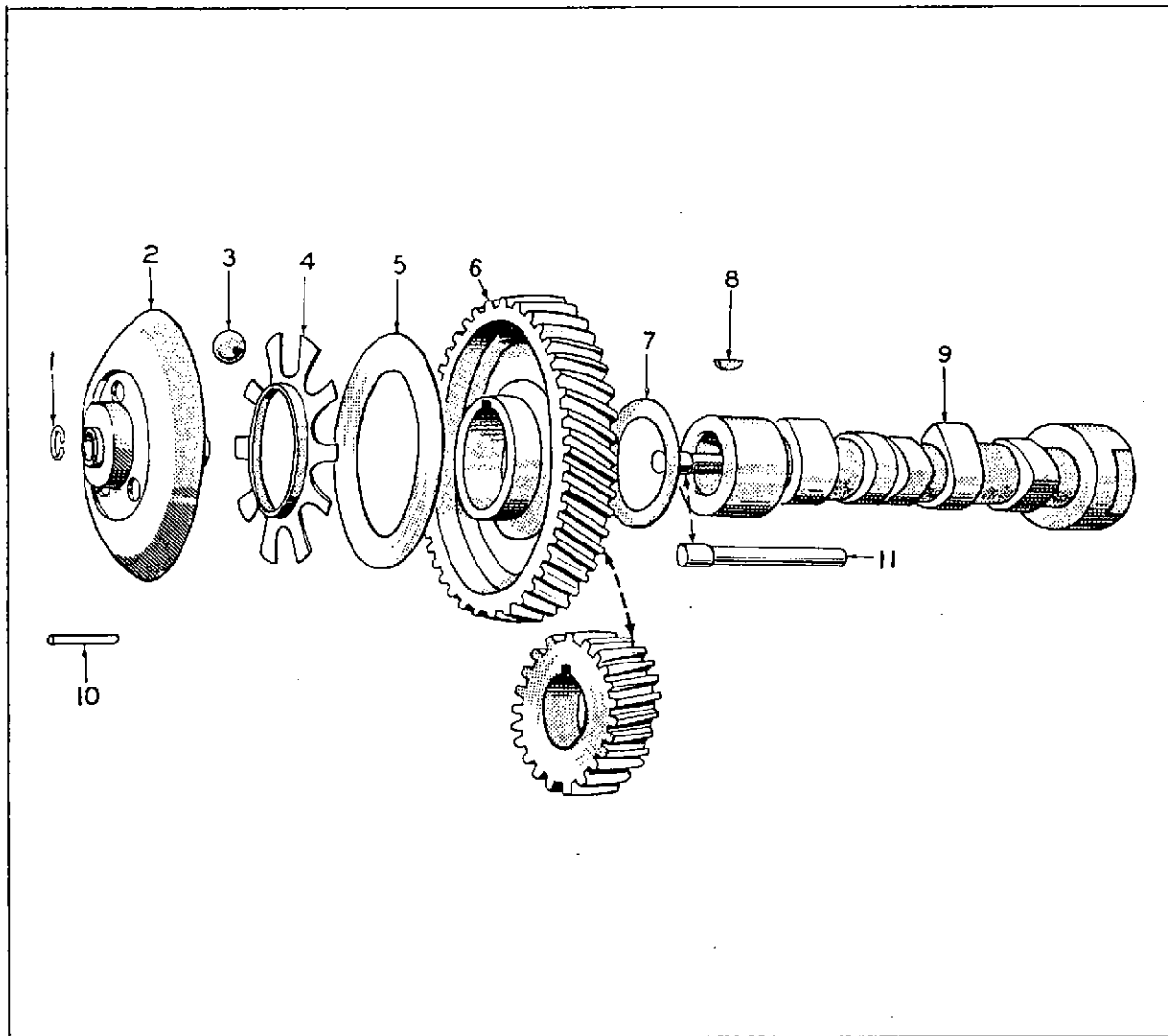


FIG. D - CAMSHAFT & GOVERNOR GROUP

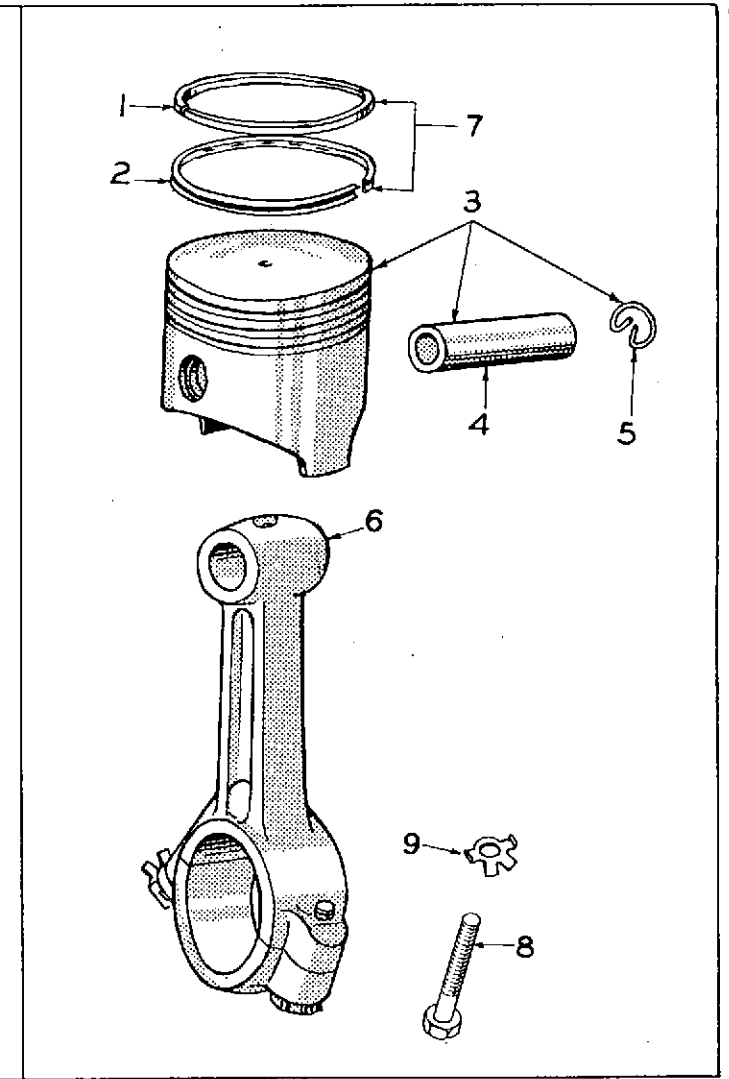


FIG. E - PISTON & CONNECTING ROD GROUP

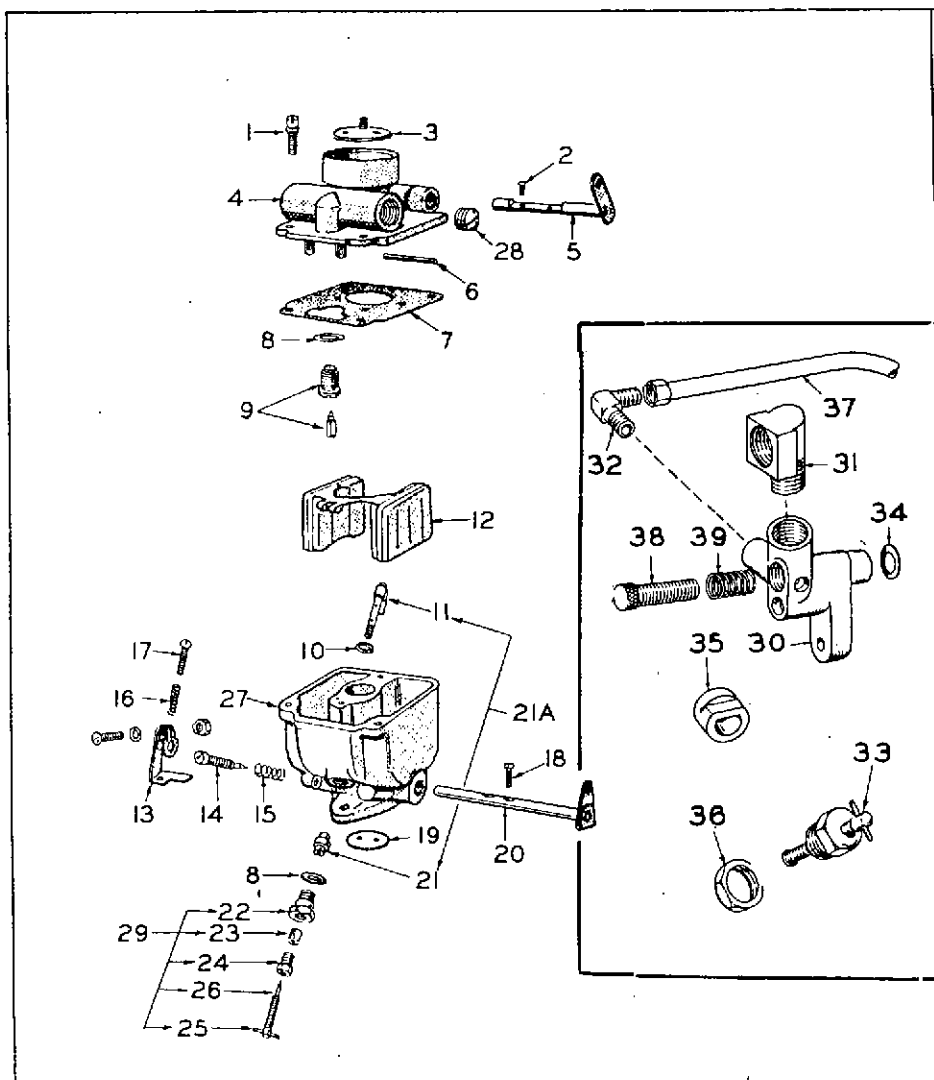


FIG. G - CARBURETOR PARTS GROUP

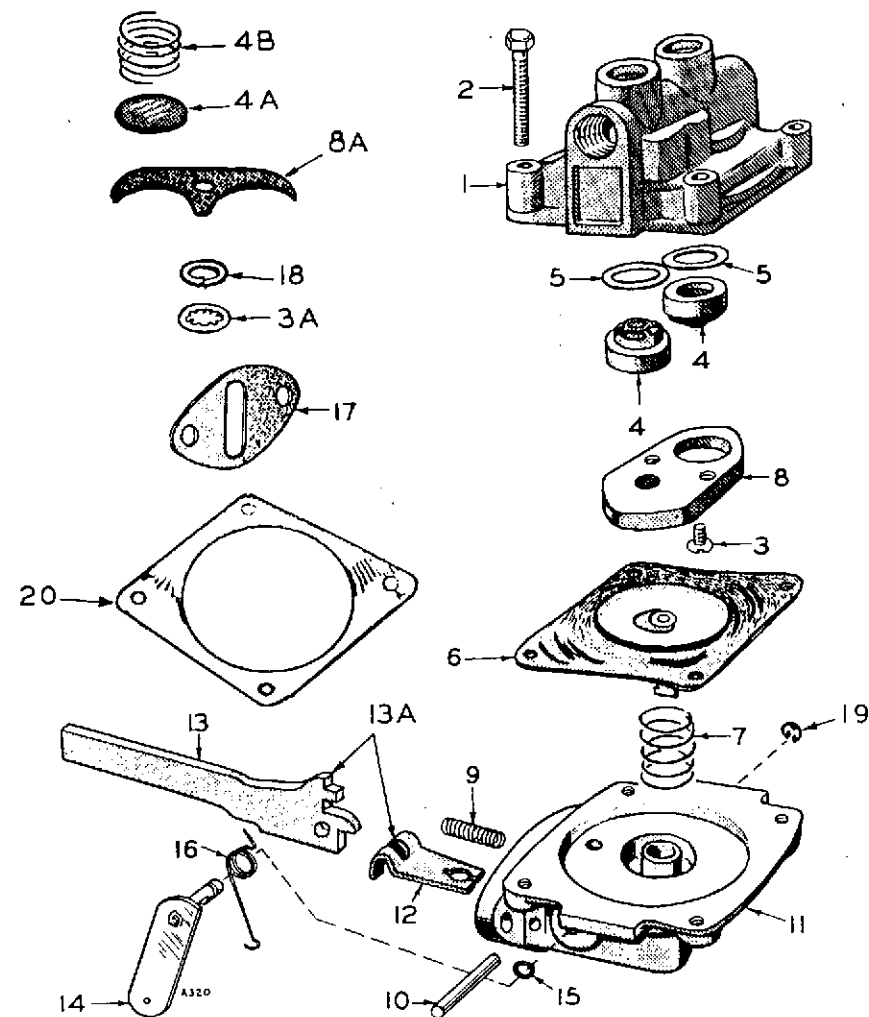


FIG. H - FUEL PUMP PARTS GROUP

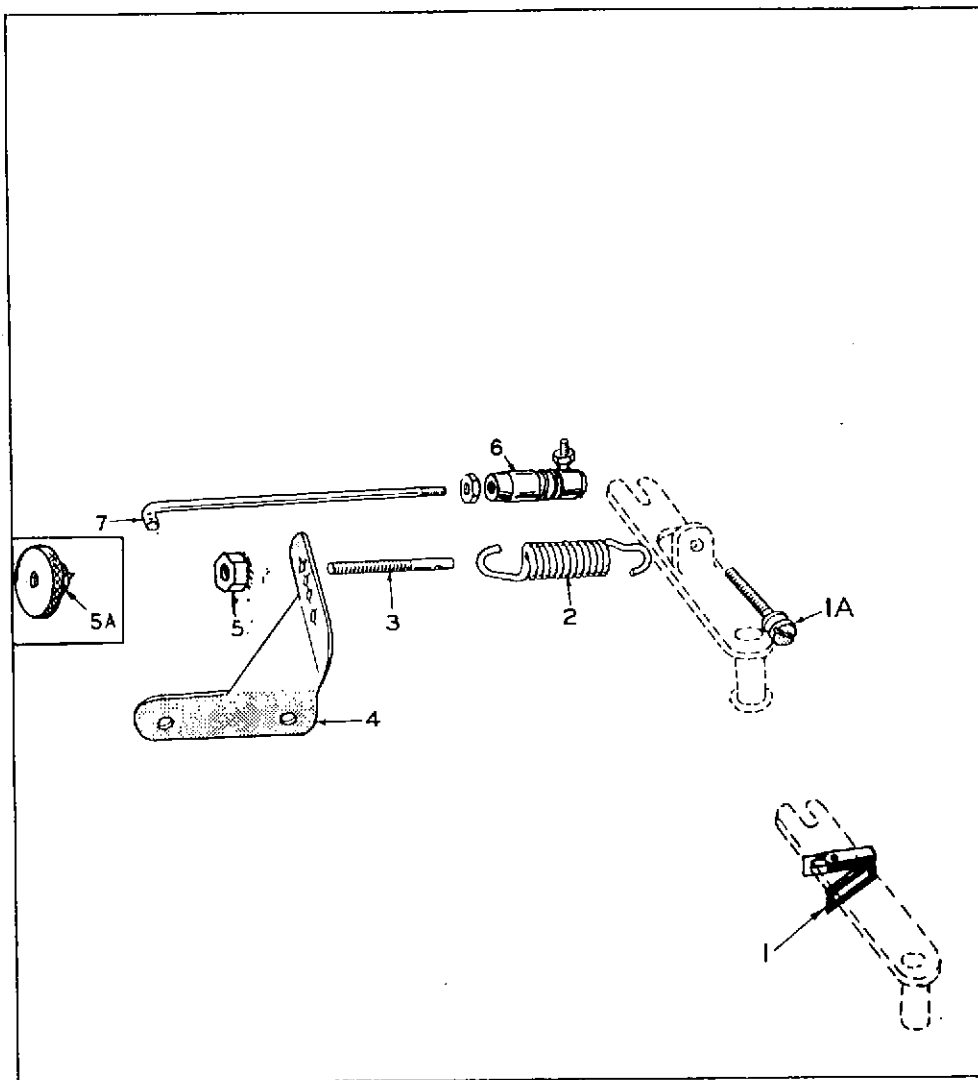


FIG. J - GOVERNOR GROUP

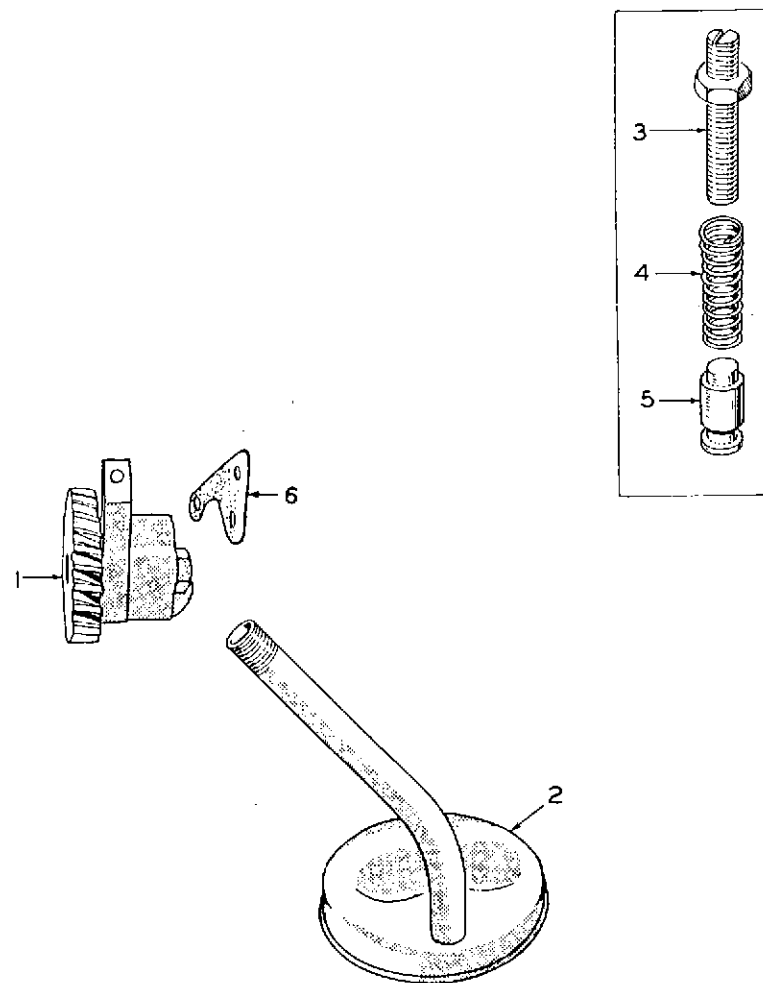


FIG. K - OIL PUMP GROUP

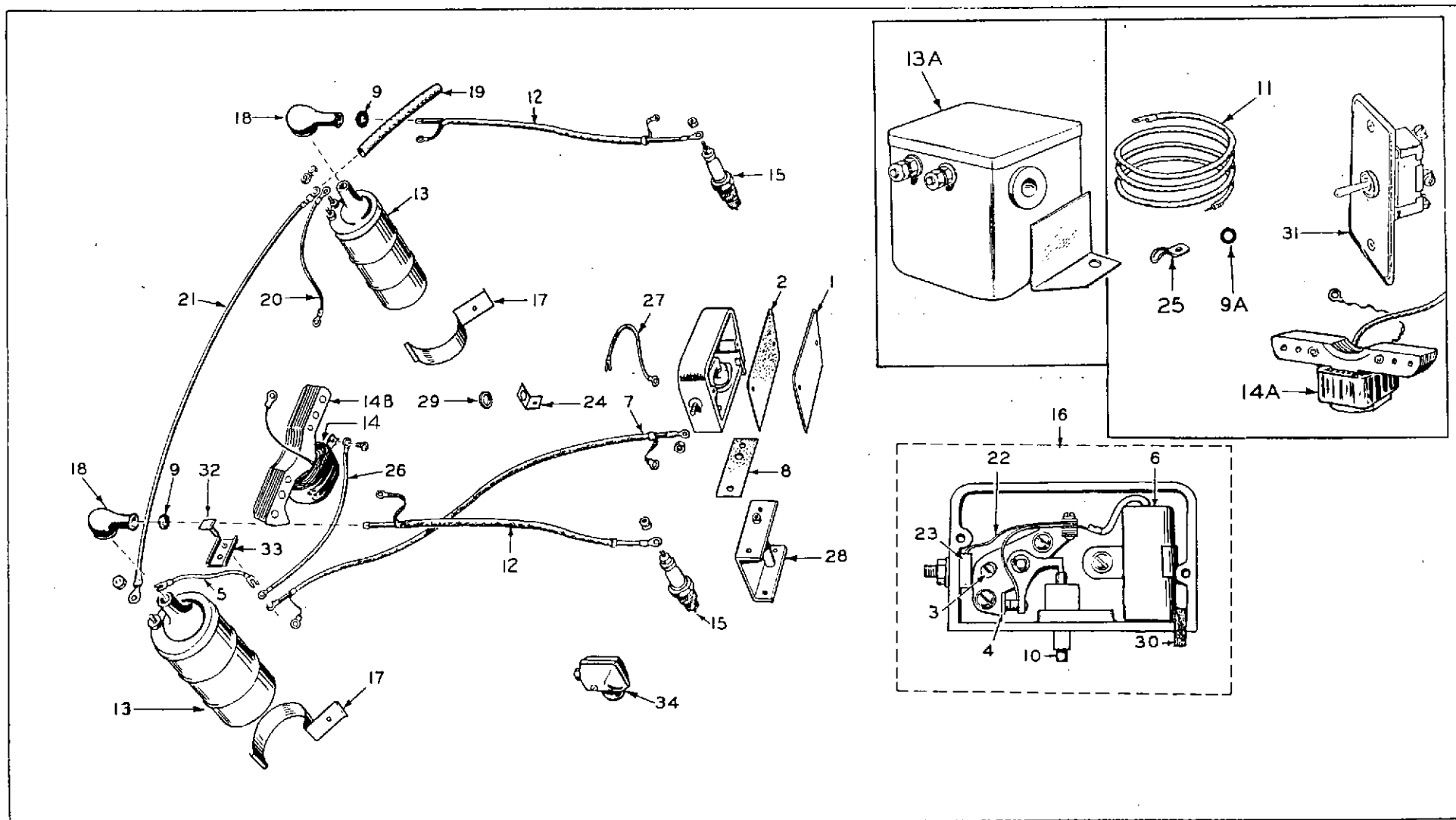


FIG. L - IGNITION GROUP

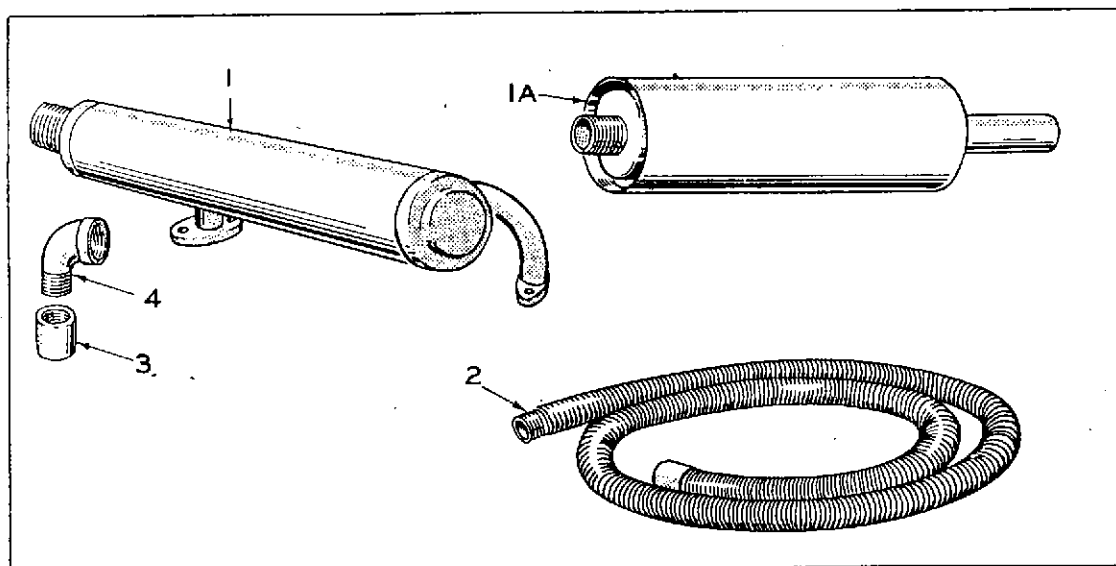


FIG. M - MUFFLER GROUP

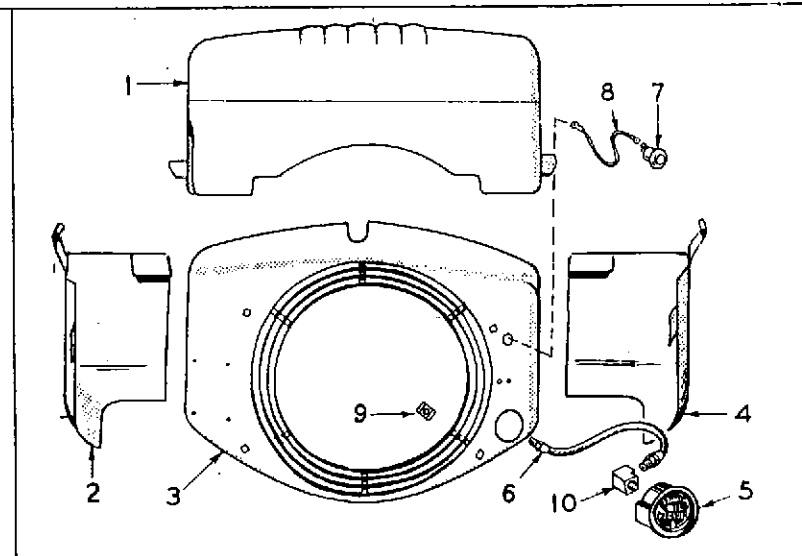


FIG. N - HOUSING GROUP

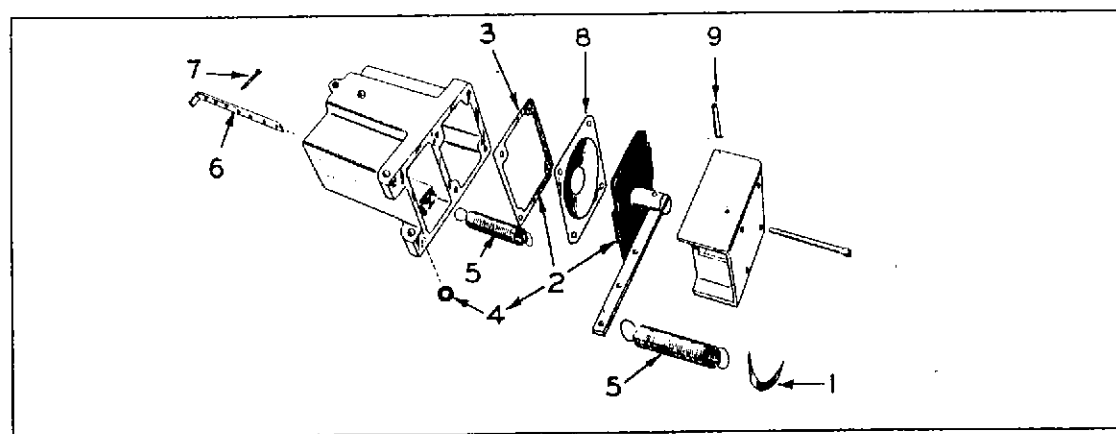


FIG. P - VACUUM SPEED BOOSTER GROUP

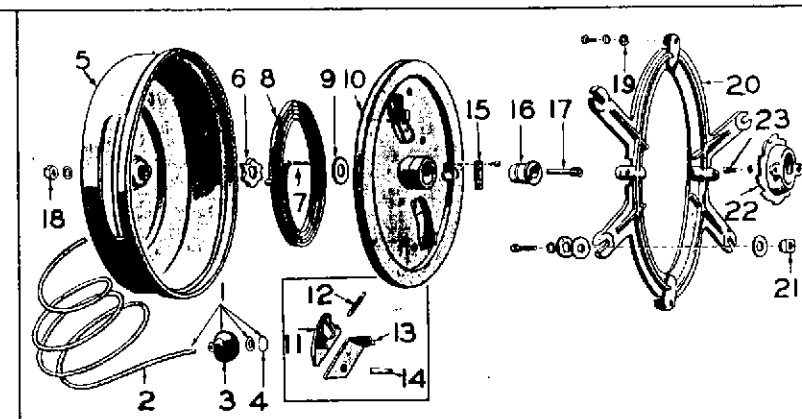


FIG. Q - READI - PULL STARTER GROUP

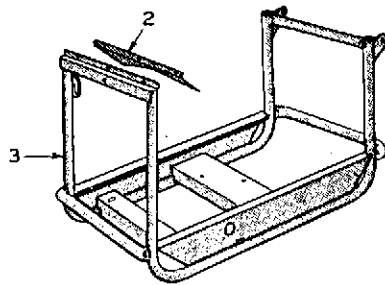
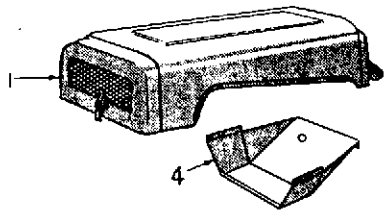


FIG. R - CARRYING FRAME GROUP

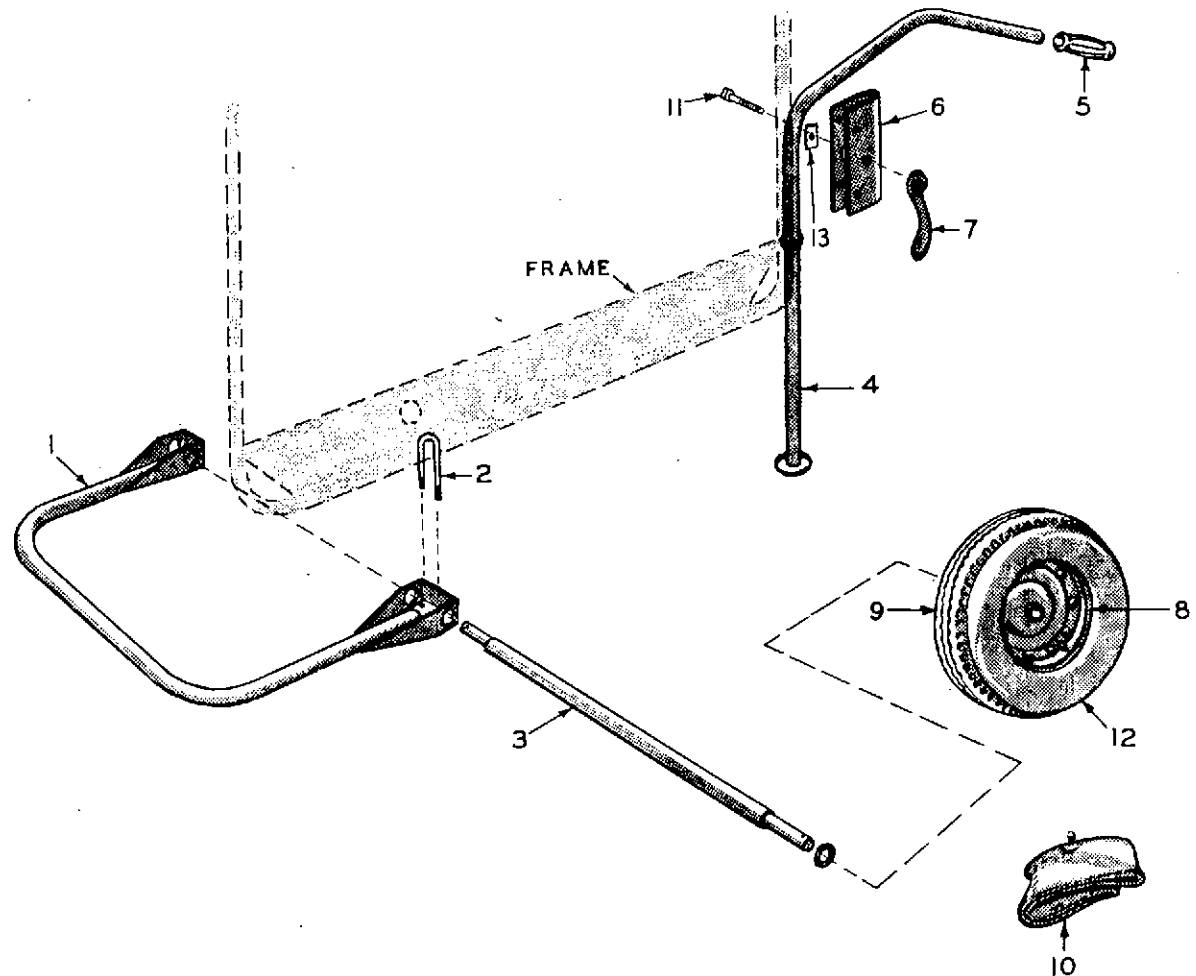


FIG. S - DOLLY MOUNTING GROUP (OPTIONAL)

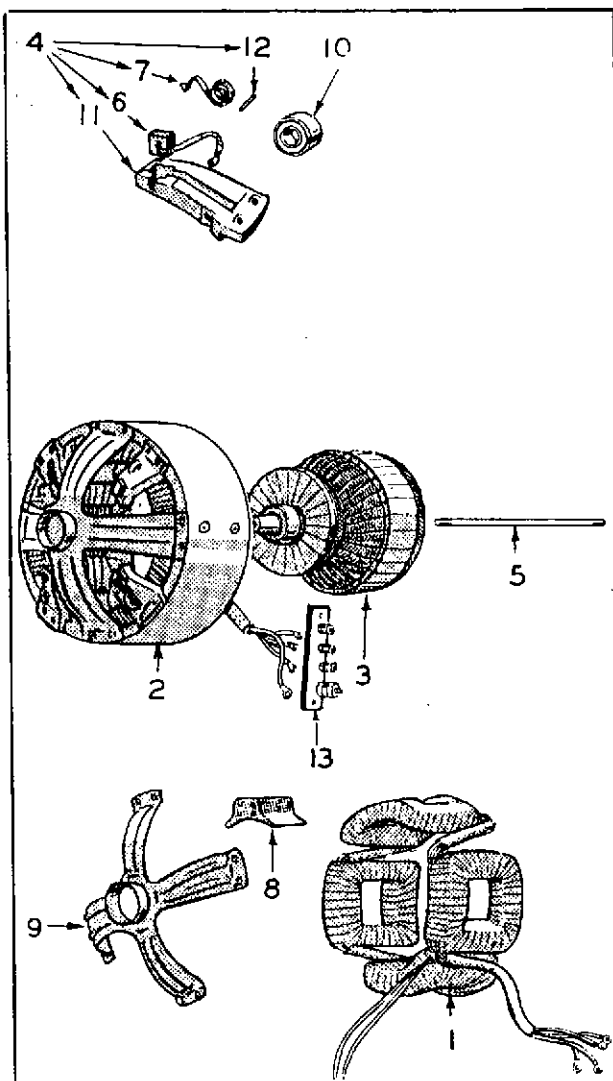


FIG. T - STARTER - GENERATOR GROUP

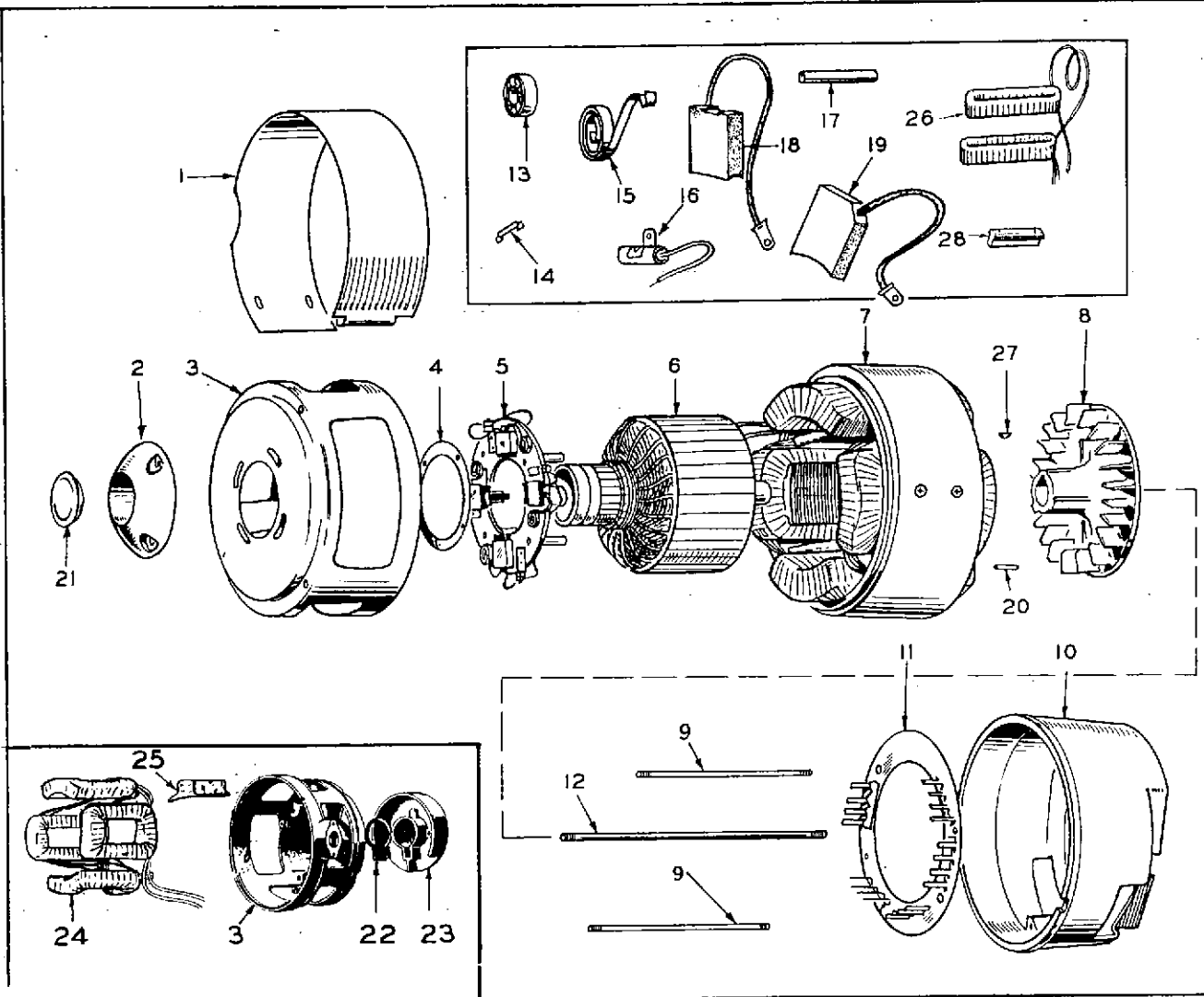


FIG. U - GENERATOR GROUP

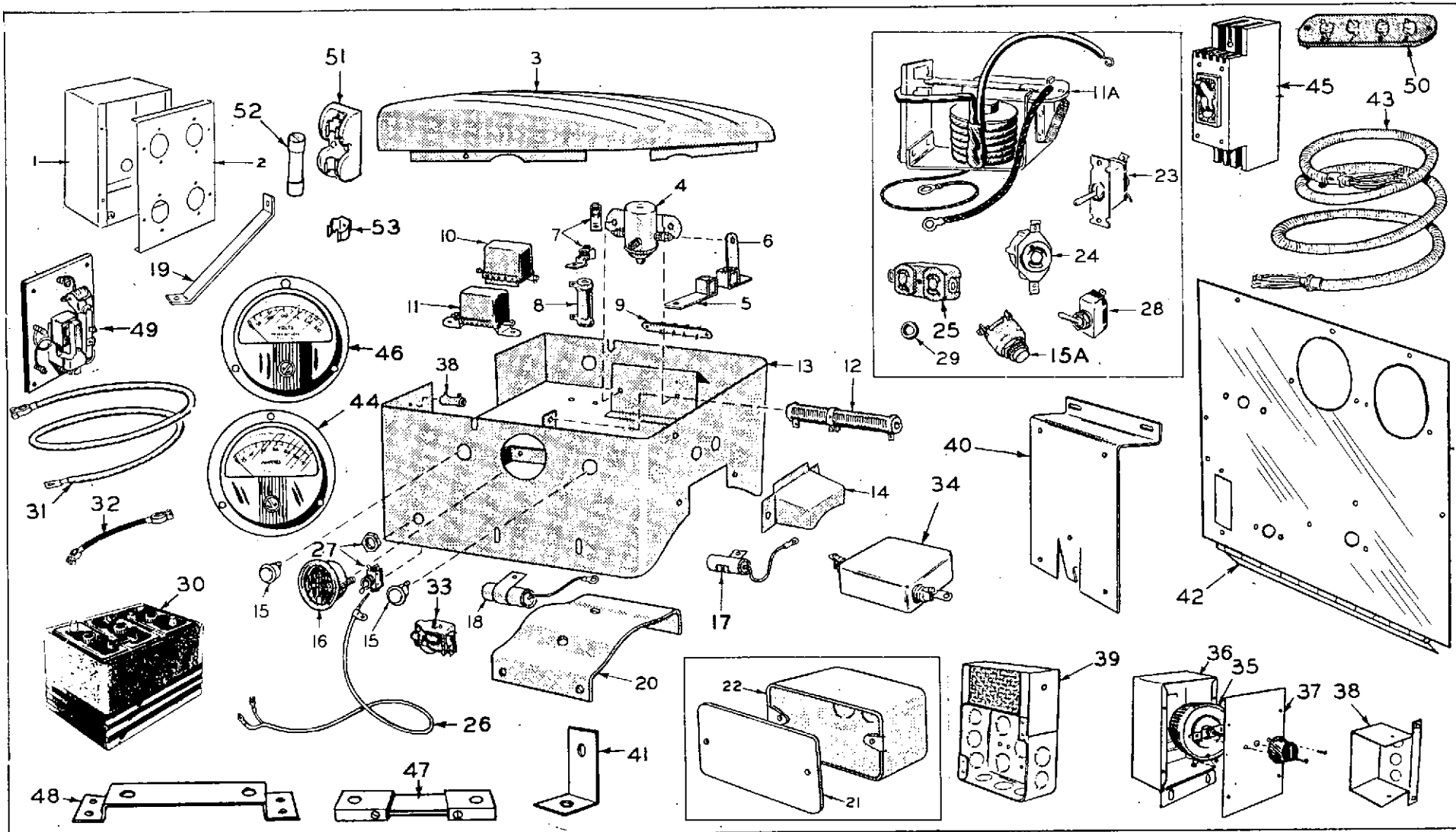


FIG. V - CONTROL GROUP

REF. NO.	PART NO.	QUANT. USED	DESCRIPTION
FIG. A - CYLINDER BLOCK, OIL BASE & GEAR COVER GROUP			
1	509-8	1	†Seal, Oil - Governor Shaft.
2	510-13	1	†Bearing, Governor Shaft - Upper.
			†Arm & Shaft, Governor.
3	150B41	1	Prior to Spec "N".
	150B234	1	Begin Spec "N" - Use REPLACEMENT Arm & Shaft #150-710.
3A	150-710	1	Begin Spec "N" (REPLACEMENT) Converts method of governor adjustment from STUD to SPRING CLIP (Includes Spring Clip)
3B	150A678	1	Clip, Governor Sensitivity Adjusting - Use Only Begin Spec "N" on Models With Replacement Arm.
4			†Yoke, Governor Shaft.
	150A80	1	Prior to Spec "N".
	150A620	1	Begin Spec "N"(Note: During Spec "AB" the hole for the Cotter Pin was deleted in favor of a retaining ring groove. Part number remained the same.) Replaces #150A236.
5	526-140	1	†Washer, Governor Shaft Yoke (Replaces Springs #150A76 or #150A233) Use on Yokes WITHOUT Retaining Ring Groove.
6	518-129	1	†Ring, Governor Yoke Retaining - Use on Yokes WITH Retaining Ring Groove.
6A	516-36	1	Pin, Cotter - Use on Yokes WITH HOLE drilled for cotter pin.
7	510-8	1	†Bearing, Governor Shaft - Lower.
8	510-14	1	†Ball, Bearing - Governor Shaft.
9			Cover Assembly, Gear - Includes parts marked (†) .
	103C207	1	For Plants with Parts Key Nos. 1, 2, 3, 4, 5, 7, 8 and 9 (Replaces 103C74, 103C156 or 103C197).
	103C158	1	For Plants with Parts Key No. 6 (Replaces Cover #103C72).
10	103B11	1	Gasket, Gear Cover.
11			Stud, Gear Cover Mounting.
	520A115	4	5/16 x 2-1/4" Long.
	520A124	1	5/16 x 2-5/8" Long.
12			Block Assembly, Cylinder - Includes Bearing Plate, Bearings, Studs, Dowel Pins, Valve Guides, Valve Seat Inserts and Welch Plug. Does NOT Include Valves.
	110A389	1	Plants with SIDE MOUNTED FUEL Pumps (Replaces #110A387).
	110K701	1	Plants with TOP MOUNTED FUEL Pumps. (Replaces #110K700).
13			Cap, Breather Tube - Rubber..
	123A73	1	Prior to Spec "P".
	123B293	1	Begin Spec "P".

† - Parts Contained in Gear Cover Assembly.

REF. NO.	PART NO.	QUANT. USED	DESCRIPTION
FIG. A - CYLINDER BLOCK, OIL BASE & GEAR COVER GROUP (Cont.)			
14	123A105	1	Tube, Breather - Less Cap & Valve. Prior to Approximately 1/1/47 - For replacement, Use Breather Tube #123A620, Breather Cap #123A73, Breather Valve #123A104 and Carburetor Air Inlet #145B48.
	123A129	1	Begin Approximately 3/20/63 (Replacement Tube).
	123A620	1	Begin Approximately 3/20/63 (Use Replacement Tube #123A129).
15	123-591	1	Baffle, Breather Tube - Use ONLY with Tube #123A620.
15A	123A643	1	Ring, Retainer - Internal, Baffle Support - Use ONLY with #123A620 - Replaces 112A68.
16	520A123	2	Stud, Valve Compartment Cover.
17	110A666	2	Cover, Valve Compartment (Replaces #110A121).
18	110A667	2	Gasket, Valve Compartment Cover (Replaces #110A110).
19	520A95	2	Stud, Intake Manifold Mounting - 3/8 x 2-3/4".
20	517-8	1	Plug, Camshaft Welch.
21	520A114	9	Stud, Rear Bearing Plate and Generator Adapter - 5/16 x 1-5/16" (NOTE: Some early models used quantity of 4).
22			Stud, Cylinder Head Mounting.
	520A78	10	5/16 x 1-15/16".
	520A79	8	5/16 x 1-5/8".
23			Indicator & Cap, Oil Fill.
	★	1	Prior to Spec "L".
	123A227	1	Spec "L, M and N".
			Spec "P".
	123A227	1	For Plants with Parts Key Nos. 1, 3, 4, 6, 7, 8 and 9.
	123A328	1	For Plants with Parts Key Nos. 2 and 5.
			Begin Spec "T".
	123A227	1	For Plants with Parts Key No. 2 (50 Cycle only).
	123A328	1	For Plants with Parts Key No. 2 (60 Cycle only).
	123A328	1	For Plants with Parts Key No. 5.
	123A227	1	For Plants with Parts Key Nos. 1, 3, 4, 6, 7, 8 and 9.
25			Gasket, Oil Indicator Cap.
	★	1	Prior to Serial #398567.
	123A191	1	Begin Serial #398567.

★ - Refer to Factory. Include complete Model and Serial Number of Plant.

REF. NO.	PART NO.	QUANT. USED	DESCRIPTION
FIG. A - CYLINDER BLOCK, OIL BASE & GEAR COVER GROUP (Cont.)			
26	102B8	1	Gasket, Oil Base Mounting.
27	★		Stud, Oil Base Mounting.
			Prior to Spec "L".
			Spec "L, M and N".
	520A119	3	3/8 x 1-9/16".
	520A368	3	3/8 x 5-3/8".
			Spec "P".
	520A119	6	For Plants with Parts Key Nos. 2 and 5 (3/8 x 1-9/16").
	520A119	3	For Plants with Parts Key Nos. 1, 3, 4, 6, 7, 8 and 9 (3/8 x 1-9/16").
	520A368	3	For Plants with Parts Key Nos. 1, 3, 4, 6, 7, 8 and 9 (3/8 x 5-3/8").
			Begin Spec "T".
	520A119	3	For Plants with Parts Key No. 2 (50 Cycle only) 3/8 x 1-9/16".
	520A368	3	For Plants with Parts Key No. 2 (50 Cycle only) 3/8 x 5-3/8".
	520A119	6	For Plants with Parts Key No. 2 (60 Cycle only) 3/8 x 1-9/16".
	520A119	6	For Plants with Parts Key No. 5 (3/8 x 1-9/16").
	520A119	3	For Plants with Parts Key Nos. 1, 3, 4, 6, 7, 8 and 9 (3/8 x 1-9/16").
	520A368	3	For Plants with Parts Key Nos. 1, 3, 4, 6, 7, 8, and 9 (3/8 x 5-3/8").
28	502-20	1	Elbow, Street - Oil Line - Begin Serial #379165.
28A	502-17	1	Connector, Inverted Female - Oil Line - Prior to Serial #379165.
29	110A697	2	Gasket, Cylinder Head (Replaces #110A124).
30			Head, Cylinder.
	110A164	1	Right Hand.
	110A163	1	Left Hand.
			Nut, Cylinder Head Mounting.
31	110A244	4	Long - Also mounts Air Housing.
32	110A445	14	Short.
33 & 33A			Base, Oil.
	★	1	Prior to Spec "L".
	102A116		Spec "L, M and N" - Replaces 102A115 and 102A337 (Illustrated as Ref. 33).

(Continued next page)

★ - Refer to Factory. Include complete Model and Serial Number of Plant.

REF. NO.	PART NO.	QUANT. USED	DESCRIPTION
FIG. A - CYLINDER BLOCK, OIL BASE & GEAR COVER GROUP (Cont.)			
			Base, Oil (Cont.)
			Spec "P"
	102A139	1	For Plants with Parts Key Nos. 2 and 5 (Illustrated as Ref. 33A).
	102A116	1	For Plants with Parts Key Nos. 1, 3, 4, 6, 7, 8 and 9 (Illustrated as Ref. 33).
			Begin Spec "T".
	102A116	1	For Plants with Parts Key No. 2 (50 Cycle only) Ill. as Ref. 33 - Repl. 102A114 & 102A337.
	102A139	1	For Plants with Parts Key No. 2 (60 Cycle only) Illustrated as Ref. 33A.
	102A139	1	For Plants with Parts Key No. 5 (Illustrated as Ref. 33A).
	102A116	1	For Plants with Parts Key Nos. 1, 3, 4, 6, 7, 8 and 9 (Illustrated as Ref. 33).
34			Nipple, Oil Drain.
	★	1	Prior to Spec "L".
	505-76	1	Spec "L, M and N".
			Spec "P".
	505-224	1	For Plants with Parts Key Nos. 2 and 5.
	505-76	1	For Plants with Parts Key Nos. 1, 3, 4, 6, 7, 8 and 9.
			Begin Spec "T".
	505-76	1	For Plants with Parts Key No. 2 (50 Cycle only).
	505-224	1	For Plants with Parts Key No. 2 (60 Cycle only).
	505-224	1	For Plants with Parts Key No. 5.
	505-76	1	For Plants with Parts Key Nos. 1, 3, 4, 6, 7, 8 and 9.
35	505-28	1	Coupling, Pipe - Oil Drain - 3/8".
36			Plug, Oil Drain.
	★	1	Prior to Spec "L".
	505-110	As Req.	Begin Spec "L" - 1 or 2 used.
37	509A40	1	†Seal, Gear Cover Oil - Replaces 509-11.
38	516A11	2	Pin, Gear Cover Dowel.
40	101K181	2	Bearing Kit, Crankshaft - Front or Rear - Includes Pin - Precision Type - Specify Standard or .002", .010", .020" or .030" Undersize.
41	101K115	1	Gasket Kit, Bearing Plate.
42	101C258	1	Plate, Bearing - Excludes Bearing (NOTE: On early models the Bearing Plate and Generator Adapter were one piece construction. On these early models, See Generator Parts Group).

★ - Refer to Factory. Include complete Model and Serial Number of Plant.

† - Parts contained in Gear Cover Assembly.

REF. NO.	PART NO.	QUANT. USED	DESCRIPTION
FIG. A - CYLINDER BLOCK, OIL BASE & GEAR COVER GROUP (Cont.)			
43	101A367	2	Bearing, Camshaft Front and Rear - Replaces 101A49 and 101A50.
45	509A41	1	Seal, Bearing Plate Oil Replaces 509-1.
46	516A72	2	Pin, Crankshaft Bearing Stop - 9/32" diameter (NOTE: Some Models Prior to Spec "T" used a 3/16" diameter Stop Pin #516A62).
47			Screw, Generator Support.
	800-94	1	Prior to Spec "P".
	800-94	1	Spec "P" Plants with Parts Key Nos. 1, 3, 4, 6, 7, 8 and 9 (NOTE: Models with Parts Key Nos. 2 and 5, See Support).
	800-94	1	Begin Spec "T" - 50 Cycle Plants with Parts Key No. 2 (NOTE: 60 Cycle Plants, See Support).
	800-94	1	Begin Spec "T" - For Plants with Parts Key Nos. 1, 3, 4, 6, 7, 8 and 9.
47A			Support, Generator.
	232A517	1	Spec "P" Plants with Parts Key Nos. 2 and 5.
	232A517	1	Begin Spec "T" - 60 Cycle Plants with Parts Key No. 2 (NOTE: 50 Cycle Plants, See Screw).
	232A517	1	Begin Spec "T" - For Plants with Parts Key No. 5.
48	520A129	1	Stud, Exhaust Manifold or Muffler Mounting (NOTE: Quantity of 2 used Prior to Spec "AA").
51			Cushion, Plant Mounting - Upper - Included in Cushion Assembly.
	★		Prior to Spec "L".
	402A36	3	Spec "L, M and N".
			Spec "P".
	402A76	4	For Plants with Parts Key Nos. 2 and 5.
	402A36	3	For Plants with Parts Key Nos. 1, 3, 4, 6, 7, 8 and 9.
			Begin Spec "T".
	402A36	3	For Plants with Parts Key No. 2 (50 Cycle only).
	402A76	4	For Plants with Parts Key No. 2 (60 Cycle only).
	402A76	4	For Plants with Parts Key No. 5.
	402A36	3	For Plants with Parts Key Nos. 1, 3, 4, 6, 7, 8 and 9.
52			Bushing, Spacer - Plant Mounting - Included in Cushion Assembly.
	★		Prior to Spec "L".
	402A46	3	Spec "L, M and N".
			(Continued next page)

★ - Refer to Factory. Include complete Model and Serial Number of Plant.

REF. NO.	PART NO.	QUANT. USED	DESCRIPTION
FIG. A - CYLINDER BLOCK, OIL BASE & GEAR COVER GROUP (Cont.)			
Bushing, Spacer (Cont.)			
Spec "P"			
	402A75	4	For Plants with Parts Key Nos. 2 and 5.
	402A46	3	For Plants with Parts Key Nos. 1, 3, 4, 6, 7, 8 and 9.
Begin Spec "T".			
	402A46	3	For Plants with Parts Key No. 2 (50 Cycle only).
	402A75	4	For Plants with Parts Key No. 2 (60 Cycle only).
	402A75	4	For Plants with Parts Key No. 5.
	402A46	3	For Plants with Parts Key Nos. 1, 3, 4, 6, 7, 8 and 9.
53	Cushion, Plant Mounting - Lower - Included in Cushion Assembly.		
	★		Prior to Spec "L".
	402A38	3	Spec "L, M and N".
Spec "P".			
	402A45	4	For Plants with Parts Key Nos. 2 and 5.
	402A38	3	For Plants with Parts Key Nos. 1, 3, 4, 6, 7, 8 and 9.
Begin Spec "T".			
	402A38	3	For Plants with Parts Key No. 2 (50 Cycle only).
	402A45	4	For Plants with Parts Key No. 2 (60 Cycle only).
	402A45	4	For Plants with Parts Key No. 5.
	402A38	3	For Plants with Parts Key Nos. 1, 3, 4, 6, 7, 8 and 9.
54	Cushion Assembly, Plant Mounting - Includes Cushions, Spacer Bushing and Hardware.		
	★		Prior to Spec "L".
Spec "L, M and N".			
	402A53	3	For Plants with Parts Key Nos. 2 and 5.
	402A51	3	For Plants with Parts Key Nos. 1, 3, 4, 6, 7, 8 and 9.
Spec "P".			
	402A74	4	For Plants with Parts Key Nos. 2 and 5.
	402A51	3	For Plants with Parts Key Nos. 1, 3, 4, 6, 7, 8 and 9.
Begin Spec "T".			
	402A51	3	For Plants with Parts Key No. 2 (50 Cycle only).
	402A74	4	For Plants with Parts Key No. 2 (60 Cycle only).
	402A74	4	For Plants with Parts Key No. 5.
	402A51	3	For Plants with Parts Key Nos. 1, 3, 4, 6, 7, 8 and 9.

★ - Refer to Factory. Include complete Model and Serial Number of Plant.

REF. NO.	PART NO.	QUANT. USED	DESCRIPTION
FIG. A - CYLINDER BLOCK, OIL BASE & GEAR COVER GROUP (Cont.)			
56	526A122	18	Washer, Spacer - Cylinder Head Stud Nut (Replaces #526-45).
57	123A104	1	Valve, Breather (NOTE: Part of Breather Tube on Early Models).
58	516-130	1	†Pin, Roll - Governor Cup Stop - Begin Spec "AB" (NOTE: Prior to Spec "AB", See Camshaft and Governor Cup Group) Replaces #516-117.
59	518-27	1	Nut, Spring - Governor Yoke - Prior to Spec "N".
	123A79	1	Clamp, Oil Fill Cap Spring - Early Models with "Dome Type" Cap - Clamp Retained Cap to Fill Tube (Not Illustrated).
60	120A437	1	Tube, Crankcase Oil - Internal to rear main bearing.

† - Parts Contained in Gear Cover Assembly.

FIG. B - VALVE GROUP

1	110A104	2	Valve, Intake - Steel.
2			Valve, Exhaust.
	110A473	2	Steel - Prior to Spec "AA" (Replaces #110A288).
	110A444	2	Stellite - Begin Spec "AA".
3			Insert, Seat - Specify: Standard or .002", .005", .010", .025" or .027" Oversize.
	110A197	2	Intake Valve - Steel.
	110A245	2	Exhaust Valve - Stellite (Replaces #110A176).
4			Gasket, Valve Guide.
	110A68	2	Intake Valve - Begin Serial #378558 (NOTE: Plants Prior to #378558, See "O" Ring).
	110A68	2	Exhaust Valve - Spec "N, P and T" only.
4A	509-30	2	"O" Ring, Intake Valve Guide - Prior to Serial #378558 (Use Valve Guide #110A443).
5	110A443	4	Guide, Valve - Shoulder Type - Replaces all previously used guides (Includes Gasket).
6			Spring, Valve.
	110A7	4	Prior to Spec "AA".
	110A539	4	Begin Spec "AA".

REF. NO.	PART NO.	QUANT. USED	DESCRIPTION
FIG. B - VALVE GROUP (Cont.)			
7			Washer, Valve Spring Retainer.
	110A6	4	Prior to Spec "AA".
	110A558	2	Begin Spec "AA" (Intake Valve only).
8	110A8	8	Lock, Valve Spring Retaining.
8A	110A123	4	Lock, Valve Guide - Used only on the Shoulderless Type Valve Guides Prior to Serial #378558.
9	115A6	4	Tappet, Valve.
10	110A540	2	Rotocap, Exhaust Valve - Begin Spec "AA".

FIG. C - CRANKSHAFT & FLYWHEEL GROUP

1	526A17	1	Washer, Flywheel Mounting - For Plants with Parts Key Nos. 1, 2, 3, 4, 5, 7, 8 and 9.
2			Key, Flywheel Mounting - For Plants with Parts Key Nos. 1, 2, 3, 4, 5, 7, 8 and 9.
	515-2	1	Prior to Spec "P" (Except Spec "N" Plants with Serial #426057, 58, 59, 60 and 61).
	515A112	1	Begin Spec "P" (Also Spec "N" Plants with Serial #426057, 58, 59, 60 and 61).
3			Screw, Flywheel Mounting - For Plants with Parts Key Nos. 1, 2, 3, 4, 5, 7, 8 and 9.
	104A181	1	Prior to Serial #436001.
	104A170	1	Begin Serial #436001.
			Flywheel.
			Prior to Spec "P" (Except Spec "N" Plants with Serial #426057, 58, 59, 60 and 61).
4	160K622	1	For Plants with Parts Key Nos. 5, 7, 8 and 9 (Includes Rope Sheave) - Replaces 160P61.
	160K622	1	For Plants with Parts Key Nos. 1 through 4 (60 Cycle) Includes Rope Sheave - Repl. 160K61.
	160D191	1	For Plants with Parts Key Nos. 1 through 4 (50 Cycle only) Includes Rope Sheave.
4A	160D202	1	Begin Spec "P" (Also Spec "N" Plants with Serial #426057, 58, 59, 60 and 61) For Plants with Parts Key Nos. 1, 2, 3, 4, 5, 7, 8 and 9 (Does NOT Include Rope Sheave).
4B	160B222	1	Sheave, Rope - Begin Spec "P" For Plants with Parts Key Nos. 1, 2, 3, 4, 5, 7, 8 and 9 (Also used on Spec "N" Plants with Serial #426057, 58, 59, 60 and 61).
5	518-14	1	Ring, Crankshaft Gear Washer Retaining.
6	104A43	1	Washer, Crankshaft Gear Retainer.

REF. NO.	PART NO.	QUANT. USED	DESCRIPTION
FIG. C - CRANKSHAFT & FLYWHEEL GROUP (Cont.)			
7	105A72	1	Gear Set, Timing - Includes Camshaft and Crankshaft Gears.
8	104D72	1	Crankshaft.
9	515-1	1	Key, Crankshaft Gear Mounting.
10	192A83	1	Rope Assembly, Manual Starting - For Rope Sheave Only - Not for Readi-Pull.
11			Wheel and Hub, Blower (Balanced) For Plants with Parts Key No. 6.
	134C128	1	Prior to Serial #342367.
	134C232	1	Begin Serial #342367 to Serial #417761.
	134C292	1	Begin Serial #417761.
FIG. D - CAMSHAFT & GOVERNOR CUP GROUP			
1	150A78	1	Ring, Camshaft Center Pin Snap.
2			Cup, Governor.
	150B105	1	Prior to Spec "AB" (Includes Stop Pin).
	150B612	1	Begin Spec "AB" (Stop Pin is in Gear Cover - NOT in Cup) Replaces Cup #150B583.
3	510-15	10	Ball, Governor Fly.
4	150B85	1	Spacer, Governor Flyball.
5	150A77	1	Plate, Governor Flyball.
6	105A72	1	Gear Set, Timing - Includes Crankshaft and Camshaft Gears (Listed also in Crankshaft and Fly-wheel Group).
7	105A4	1	Washer, Camshaft Gear Thrust (Replaces #105K79).
8	515-1	1	Key, Camshaft Gear Mounting.
9	105-77	1	Camshaft - Includes Center Pin (Replaces #105C27).
10			Pin, Governor Cup Stop.
	516A57	1	Prior to Serial #410389 (Located in Governor Cup) Replaces #516A16.
	516A71	1	Begin Serial #410389 to Spec "AB" (Located in Governor Cup).
	516-130	1	Begin Spec "AB" (Located in Gear Cover) Listed also in Cylinder Block, Oil Base & Gear Cover Group (Replaces #516-117).
11	150A75	1	Pin, Camshaft Center.
	518-7	1	Ring, Snap - Governor Cup - Prior to Spec "N".

REF. NO.	PART NO.	QUANT. USED	DESCRIPTION
FIG. E - PISTON & CONNECTING ROD GROUP			
1		4	Ring, Compression - Order 113-11 Ring Set
2		2	Ring, Oil - Order 110-11 Ring Set
3	112-33	2	Piston and Pin - Specify Std. .010", .020", .030" or .040" O/S - Replaces 112-14.
4	112A10	2	Pin, Piston - Specify Standard or .002" Oversize (Replaces 112A8).
5	112A3	4	Ring, Piston Pin Retaining.
6			Rod, Connecting - Specify Standard .010", .020" or .030" Undersize.
	114B9	2	Prior to Serial 410389 (NOTE: If Serial Number is unknown, this rod will work in all cases).
	114B45	2	Begin Serial 410389 (NOTE: If Serial Number is unknown, use 114B9).
7	113-11	2	Ring Set, Piston (For 1 Piston) Specify Standard or .005", .010", .020", .030", or .040" O/S.
7	113-51	2	Ring Set, Piston (For 1 Piston) Expander Type, Chrome Faced (OPTIONAL) Specify Standard or, .010", .020", .030", or .040" Oversize.
8	110A284	4	Screw, Connecting Rod Cap (Replaces 114A10).
9	114A59	4	Washer, Connecting Rod Lock (Replaces 114A11).

FIG. F - FUEL SYSTEM GROUP

NOTE: Parts prefixed with the symbol: (†) are used also on Plants in Parts Key 8 with the specification number 364.
 (\$) are used also on Plants in Parts Key 9 with the specification number 360.
 (▲) are used also on both of the above plants.

			Inlet, Carburetor Air.
1	145B20	1	Prior to Approximately 1/1/47 - For replacement use, Breather Tube #123A620, Breather Cap #123A73, Breather Valve #123A104 and Carburetor Air Inlet #145A48.
	145A48	1	Begin approximately 1/1/47 to Spec "P" (Metal).
1A	145A80	1	Begin Spec "P" (Rubber).
2	503-280	3	Clamp, Air Cleaner Hose (Replaces #503-23) Note: Quantity of 2 used Prior to Spec "P".
			Hose, Air Cleaner.
3	503A37	1	Prior to Spec "P".
3A	503A117	1	Begin Spec "P" to Spec "AB".
	503A281	1	Begin Spec "AB".

REF. NO.	PART NO.	QUANT. USED	DESCRIPTION
FIG. F - FUEL SYSTEM GROUP (Cont.)			
3B	140A211	1	Sleeve, Air Cleaner Hose - Begin Spec "P".
4			Clamp, Carburetor Air Inlet.
	503A19	1	Prior to Spec "P".
	503-107	1	Begin Spec "P".
5	502-2	2	Elbow, Inverted Male - (1) Fuel Pump, (1) Fuel Filter.
6			Carburetor, Gasoline.
	142A57	1	For Plants with Parts Key Nos. 1, 2, 5 and 7.
	142A68	1	For Plants with Parts Key Nos. 3, 4, 6, 8 and 9.
6A			Carburetor Gas-Gasoline - OPTIONAL.
	142C258	1	For Plants with Parts Key Nos. 1, 2, 5 and 7.
	142C259	1	For Plants with Parts Key Nos. 3, 4, 6, 8 and 9.
7	140C79	1	Cleaner, Air - With Rain Shield & Metal Type Cup (Replaces #140C50).
8	154C317	1	Manifold, Exhaust (Replaces either #154C19 or #154C71) For Plants with Parts Key Nos. 1, 3, 4, 6, 7, 8 and 9.
9	154A22	2	Gasket, Exhaust Manifold or Muffler Mounting.
10	141A78	1	Gasket, Carburetor Mounting (Replaces #145A43) NOTE: Some early models used quantity of 2.
11			Line, Fuel - Steel - Bracket to Pump.
	149C179	1	For Plants with Parts Key Nos. 1 and 7 Begin Serial #384699.
	149C179	1	For Plants with Parts Key Nos. 3, 4, 6, 8 and 9 Begin Serial #392224.
	149C179	1	For Plants with Parts Key Nos. 2 and 5 Begin Serial #389216.
	159B169	1	For Plants with Parts Key Nos. 3, 4, 6, 8 and 9 Prior to Serial #392224.
	159C182	1	For Plants with Parts Key Nos. 2 and 5 Prior to Serial #389216.
12			Manifold, Intake.
	154C18	1	Prior to Spec "T" (NOT Machined for Vacuum Booster).
	154C241	1	Spec "T" Plants (WITH Provision for Vacuum Booster).
			Begin Spec "AA".
	154C18	1	For Plants with Parts Key Nos. 1, 2, 3 and 4 (3000 watt only) NOT Machined for Vacuum Booster.
	154C18	1	For Plants with Parts Key Nos. 5, 6, 7, 8 and 9 (NOT Machined for Vacuum Booster).
	154C241	1	For Plants with Parts Key Nos. 1, 2 and 3 (3500 watt only) WITH Provision for Vacuum Booster.
13	149A136	1	Plate, Cover - Extra Fuel Pump Opening - Used on Plants with SIDE MOUNTED Fuel Pumps.

REF. NO.	PART NO.	QUANT. USED	DESCRIPTION
FIG. F - FUEL SYSTEM GROUP (Cont.)			
14	154A13	2	Gasket, Intake Manifold.
16	149A45	1	Spacer, Fuel Pump Mounting (NOTE: Some early models used 2 thin spacers).
17	149A3	2	Gasket, Fuel Pump Mounting (3 Required with 2 Spacers) NOTE: Used also on Plants with SIDE MOUNTED Fuel Pumps for mounting extra fuel pump opening plate and for mounting governor spring bracket.
18	140-68	1	Screen, Air Cleaner Cup.
19	140K403	1	Cup Assembly, Air Cleaner Oil - Includes Screen (METAL) Replaces all previously used Plastic Cups).
20	502-3	1	Connector, Inverted Male - Fuel Pump Inlet.
21	149D693	1	Pump, Fuel - Replaces all previously used Pumps (NOTE: When replacing SIDE MOUNTED Fuel Pump use also Conversion Kit #149K130).
22			Line, Fuel - Flexible - Tank to Bracket.
	501A4	1	† For Plants with Parts Key Nos. 2 and 5 Begin Serial #389216 (12" Long).
	501A9	1	For Plants with Parts Key Nos. 1, 3, 4, 6, 7, 8 and 9.
			Tank, Fuel.
23	159C165	1	§ For Plants with Parts Key Nos. 2 and 5 (Mounts in Housing).
23A	159C25	1	† For Plants with Specification #364 only (Mounts over Generator).
23B	415A10	1	For Plants with Parts Key Nos. 1, 3, 4, 6, 7, 8 and 9 - Less Valve - Use Replacement Tank #415A126.
	415A126	1	For Plants with Parts Key Nos. 1, 3, 4, 6, 7, 8 and 9 (Replacement Tank) Less Valve (Separate 5 Gallon) Not illustrated.
24	149B79	1	Filter Assembly, Fuel (Replaces #149-180) Mounts at Carburetor.
24A	149-149	1	Gasket, Fuel Filter Bowl (Plants with Filter Mounted at Carburetor).
24B	149-150	1	Bowl, Fuel Filter (Plants with Filter Mounted at Carburetor).
			Valve, Fuel Tank Shut Off.
25	504A16	1	§ For Plants with Parts Key Nos. 2 and 5.
	504-8	1	† For Plants with Specification #364 only.
25A	504A13	1	For Plants with Parts Key Nos. 1, 3, 4, 6, 7, 8 and 9.

§, † or ▲ - See Note preceding this group.

REF. NO.	PART NO.	QUANT. USED	DESCRIPTION
FIG. F - FUEL SYSTEM GROUP (Cont.)			
26			Bracket, Fuel Line.
	149A171	1	For Plants with Parts Key Nos. 1 and 7 Begin Serial #384699.
	149A171	1	For Plants with Parts Key Nos. 2 and 5 Begin Serial #389216.
	149A171	1	For Plants with Parts Key Nos. 3, 4, 6, 8 and 9 Begin Serial #392224.
27			Band, Fuel Tank Mounting.
	159A166	2	§For Plants with Parts Key Nos. 2 and 5.
	159A93	2	†For Plants with Specification #364 only.
28	505-61	1	Nipple, Pipe (1/8 x 2") Fuel Filter to Carburetor.
29	149A139	1	†Strainer, Fuel Tank - For Plants with Specification #364 only.
31	159B20	1	▲Cap, Fuel Tank - For Plants with Parts Key Nos. 2 and 5.
32	159B77	1	†Bracket, Fuel Tank Mounting - For Plants with Specification #364 only.
33			Line, Fuel - Fuel Pump to Fuel Filter.
	149A165	1	For Plants with Parts Key Nos. 1, 3, 4, 6, 7, 8 and 9 Prior to Serial #392048.
	149A174	1	For Plants with Parts Key Nos. 1, 3, 4, 6, 7, 8 and 9 Begin Serial #392048.
	149A174	1	For Plants with Parts Key Nos. 2 and 5.
34			Cover Assembly, Electric Choke - Includes Heating Element.
			Begin with Spec "N" (Ceramic).
	153A113	1	For Plants with Parts Key Nos. 3 and 6 (12 Volt).
	153A115	1	For Plants with Parts Key Nos. 4, 8 and 9 (32 Volt).
34A			Prior to Spec "N" (Cast).
	153A49	1	For Plants with Parts Key Nos. 3 and 6 (12 Volt).
	153A52	1	For Plants with Parts Key Nos. 4, 8 and 9 (32 Volt).
35			Bracket, Manual Choke (On Manifold).
	153A93	1	For Plants with Parts Key Nos. 2 and 5 Begin Serial #389216.
	152B66	1	For Plants with Parts Key Nos. 2 and 5 Prior to Serial #389216 (NOTE: Used only when replacing #153A91 Choke).
37			Choke, Manual.
	153A91	1	For Plants with Parts Key Nos. 2 and 5 Prior to Serial #389216 (18" Long) Use #153B94 Choke and #152B66 Bracket.
	153A94	1	For Plants with Parts Key Nos. 2 and 5 Begin Serial #389216 (17-5/8" Long).
	153B43	1	For Plants with Parts Key Nos. 1 and 7 Prior to Spec "M" (17" Long).
	153B97	1	For Plants with Parts Key Nos. 1 and 7 Begin Spec "M" (20-1/4" Long).

§, † or ▲ - See Note preceding this group.

REF. NO.	PART NO.	QUANT. USED	DESCRIPTION
FIG. F - FUEL SYSTEM GROUP (Cont.)			
38	153A90	1	Bracket, Manual Choke (On Carburetor).
38A	153-263	1	For Plants with Parts Key Nos. 2 and 5 Prior to Serial #389216.
	153-263	1	For Plants with Parts Key Nos. 2 and 5 Begin Serial #389216 (Replaces #153A16).
39			Bracket, Electric Choke.
	153A45	1	For Plants with Parts Key Nos. 3, 4, 6, 8 and 9 Prior to Spec "N" (Use with Cast Cover).
	153A58	1	For Plants with Parts Key Nos. 3, 4, 6, 8 and 9 Begin Spec "N" (Use with Ceramic Cover).
40	153A17	1	Element, Electric Choke Bi-Metal - For Plants with Parts Key Nos. 3, 4, 6, 8 and 9.
41	149A648	1	Rod, Fuel Pump Primer Extension (Replaces #149A271) For Plants with Parts Key Nos. 1, 2, 5 and 7 Begin with Serial #458109 (EXCEPT Serial #458573 through #458701).
42			Choke Assembly, Electric (NOTE: For Plants with Parts Key Nos. 3, 4, 6, 8 and 9 Begin Spec "N" - Order Component parts separately only).
	153A65	1	For Plants with Parts Key Nos. 3 and 6 Prior to Spec "N" (12 Volt).
	153A67	1	For Plants with Parts Key Nos. 4, 8 and 9 Prior to Spec "N" (32 Volt).
43			Pipe, Carburetor Adapter to Gas Regulator - Used only on Plants with OPTIONAL Gas-Gasoline Carburetor.
	148B130	1	For Plants with "Algas" Regulator (NOTE: This Regulator used a steel fuel line to Carburetor) Early Models.
	148A147	1	For Plants with "Ensign" Regulator (NOTE: This Regulator uses a Flexible Fuel Hose to Carburetor).
44	153A86	1	Strap, Electric Choke Element Retainer - For Plants with Parts Key Nos. 3, 4, 6, 8 and 9 Prior to Spec "N".
45			Regulator, Gas - Use only on Plants with OPTIONAL Gas-Gasoline Carburetor.
	148K161	1	Plants with "Algas" Regulator and Steel Fuel Line to Carburetor (Early Models) Note: This is a kit to convert early models with "Algas" Regulator to the later "Ensign" Model.
	148A428	1	Plants with "Ensign" Regulator and Flexible Fuel Hose to Carb. (Later Models) - Replaces 148-9.
46	505-21	1	Bushing, Reducer - 3/4 x 1/2" - Regulator Outlet (Optional) Plants with Gas-Gasoline Carburetor and Ensign Gas Regulator.
47	501A25	1	Hose, Regulator to Carburetor (Optional) Plants with Gas-Gasoline Carburetor and Ensign Gas Regulator.

REF. NO.	PART NO.	QUANT. USED	DESCRIPTION
FIG. F - FUEL SYSTEM GROUP (Cont.)			
48	503-27	1	Clamp, Hose (Optional) Plants with Gas-Gasoline Carburetor and Ensign Gas Regulator.
	148A119	1	Bracket, Gas Regulator Mounting (Optional) Plants with ALGAS Regulator Prior to Spec "L" (Not Illustrated).
			Repair Kit, Fuel Pump.
	149K74	1	Prior to Spec "L" (AC or Blaking Mfr. Pump).
	149K526	1	Begin Spec "L" (Blaking or ONAN Mfr. Pump) If not available #149K74 will work.
	142K295	1	Repair Kit, Carburetor.

FIG. G - CARBURETOR PARTS GROUP

			Carburetor, Gasoline.
	142A57	1	For Plants with Parts Key Nos. 1, 2, 5 and 7.
	142A68	1	For Plants with Parts Key Nos. 3, 4, 6, 8 and 9.
			Carburetor, Gas-Gasoline - OPTIONAL.
	142C258	1	For Plants with Parts Key Nos. 1, 2, 5 and 7.
	142C259	1	For Plants with Parts Key Nos. 3, 4, 6, 8 and 9.
	142K295	1	Kit, Repair Parts - Includes parts marked *.
	142-33	1	*Kit, Gasket.
1			Screw, Bowl Cover.
	815-103	1	#10-24 x 1/2".
	815-109	2	#10-24 x 5/8".
2	815-91	2	*Screw, Choke Fly (Replaces #142-28).
3			Fly Assembly, Choker.
	142-55	1	For Plants with Parts Key Nos. 1, 2, 5 and 7.
	142-37	1	For Plants with Parts Key Nos. 3, 4, 6, 8 and 9.
4	142-205	1	Sleeve Assembly, Choker (Cover) Replaces #142-133.
5			Shaft Assembly, Choker.
	142-217	1	For Plants with Parts Key Nos. 1, 2, 5 and 7.
	142-183	1	For Plants with Parts Key Nos. 3, 4, 6, 8 and 9.

* - Parts Contained in Repair Kit #142K295.

REF. NO.	PART NO.	QUANT. USED	DESCRIPTION
FIG. G - CARBURETOR PARTS GROUP (Cont.)			
6	142-39	1	*Shaft, Float.
7	142-31	1	Gasket, Body to Bowl.
8	148A17	2	Gasket, (1) Float Valve Seat, (1) Main Adjusting Needle Retainer (Replaces #142-30).
9	142-49	1	*Valve and Seat Assembly, Float - Includes Gasket.
10	142-32	1	Gasket, Nozzle.
11	142-285	1	Nozzle Assembly.
12			Float and Lever Assembly.
	142-361	1	Gasoline Plants - Replaces 142-38.
	142A325	1	Gas-Gasoline Plants (Optional).
13	145A8	1	*Lever, Idle Stop.
14	142-40	1	*Needle, Idle Adjusting.
15	142-282	1	Spring, Idle Needle Adjusting (Replaces #142-34).
16	142-35	1	*Spring, Throttle Stop Adjusting Screw.
17	812-63	1	Screw, Throttle Stop Adjusting.
18			Screw, Throttle Fly.
	142-26	2	Early Plants with Short Throttle Shaft - 4-36 x 1/4.
	815-72	2	Later Plants with Long Throttle Shaft - 4-40 x 1/4 (Replaces #142-281).
19	142-25	1	Fly, Throttle.
20	142-368	1	Shaft, Throttle (Replaces #142A269) - Long Style (NOTE: Early Plants with short style shaft use Assembly #142A304).
21	142-290	1	Nut and Jet, Nozzle.
21A	142-309	1	Nozzle and Nut Assembly - Includes Nozzle #142-285 and Nut and Jet #142-290.
22	142-46	1	Retainer, Main Adjusting Needle.
23	142-206	1	Packing, Main Adjusting Needle - Replaces #142-43.
24	142-45	1	Retainer, Main Adjusting Needle Packing.
25	516A27	1	Pin, Main Adjusting Needle - Replaces #142-228.
26	142-41	1	*Needle Assembly, Main Adjusting - W/Pin - Replaces #142-131.
27		1	Body Assembly - Not Sold Separately - Order New Carburetor.
28	505-53	1	Plug, Gas Inlet - 1/8" - Replaces #142-187.
29	142-42	1	Needle Assembly, Packing, Nut, Retainer, Pin and.

* - Parts Contained in Repair Kit #142K295.

REF. NO.	PART NO.	QUANT. USED	DESCRIPTION
-------------	-------------	----------------	-------------

FIG. G - CARBURETOR PARTS GROUP (Cont.)

30	148B126	1	Adapter, Carburetor - Plants with OPTIONAL Gas-Gasoline Carburetor.
31	502-74	1	Elbow, Inverted - Carburetor Adapter - Plants with OPTIONAL Gas-Gasoline Carburetor.
32	502-34	1	Elbow, Male - Idler Line to Adapter - Plants with OPTIONAL Gas-Gasoline Carburetor.
33	148A135	1	Float Lock Assembly - Plants with OPTIONAL Gas-Gasoline Carburetor.
34	148A22	1	Gasket, Adapter Mounting - Plants with OPTIONAL Gas-Gasoline Carburetor.
35	148A8	1	Lock, Choke - Gas-Gasoline Plants only with Parts Key Nos. 3, 4, 6, 8 and 9.
36	148A38	1	Nut, Bushing - 3/8-32 (Used on Float Lock Assembly) Plants with OPTIONAL Gas-Gasoline Carburetor.
37	149A30	1	Line, Idler Fuel - Plants with OPTIONAL Gas-Gasoline Carburetor.
38	148A131	1	Screw, Adapter Adjusting - Plants with OPTIONAL Gas-Gasoline Carburetor.
39	148A10	1	Spring, Adapter Adjusting Screw - Plants with OPTIONAL Gas-Gasoline Carburetor.
	870-53	1	Nut, Throttle Stop.
	142A304	1	*Shaft Assembly, Throttle - Includes Shaft #142-368, Lever #145A8, Spring #142-35 and Hardware.
	142A52	1	Shaft, Choke - For Plants with Parts Key Nos. 3, 4, 6, 8 and 9 (Included in #142-183).
	142-343	2	Bushing, Throttle Shaft - (NOTE: Some early models did not use this bushing).
	813-102	1	Screw, Throttle Stop Clamp.
			Screw, Adapter Mounting - Plants with OPTIONAL Gas-Gasoline Carburetor.
	812-88	1	8-32 x 1-7/8" Fillister Head.
	812-125	1	12-24 x 1/2" Round Head.
	518-75	1	Screw, Thumb - Choke Lock - Gas-Gasoline Plants only with Parts Key Nos. 3, 4, 6, 8 and 9.

* - Parts Contained in Repair Kit #142K295.

REF. NO.	PART NO.	QUANT. USED	DESCRIPTION
FIG. H - FUEL PUMP PARTS GROUP			
	149D693	1	Pump, Fuel - Replaces all previously used pumps (NOTE: When replacing SIDE MOUNTED Pump, use also Conversion Kit #149K130).
			Repair Kit, Fuel Pump.
	149K74	1	Prior to Spec "L" (AC or Blaking Pump) Includes Parts marked * or †.
	149K526	1	Begin Spec "L" (Blaking or ONAN Pump) If not available #149K74 will work (Includes parts marked *).
1		1	Body, Upper - Not Sold Separately - Order New Pump.
2			Screw, Body Assembly.
	815-148	4	8-32 x 7/8" Hex Head (Replaces #815-105) ONAN or Blaking Mfr. Pumps only.
	815-108	4	8-32 x 5/8" Fillister Head (AC Mfr. Pump only).
3			Screw, Valve Retainer.
	815-147	2	#6-32 x 5/8" Phillip Flat Head - ONAN Mfr. Pump only.
	814-62	2	#6-32 x 7/16" Flat Head - Blaking Mfr. Pump only.
	149-241	1	AC Mfr. Pump only.
3A	149-240	1	Washer, Valve Retainer Screw Lock - AC Mfr. Pump only.
4	149-96	2	*Valve and Cage - Blaking or ONAN Mfr. Pump.
4A	149-209	2	†Valve, Fibre - AC Mfr. Pump only.
4B	149-204	2	†Spring, Valve - AC Mfr. Pump only.
5			Gasket, Valve Retainer.
	149A95	2	*ONAN or Blaking Mfr. Pump only.
	149-207	1	†AC Mfr. Pump only.
6	149A582	1	*Diaphragm Assembly (Replaces all previously used diaphragms).
7	149A672	1	*Spring, Diaphragm (Replaces #149A93).
8			Retainer, Valve.
	149A539	1	ONAN or Blaking Mfr. Pump only (Replaces #149A84).
	149-243	1	AC Mfr. Pump only.
8A	149A159	2	*Gasket, Retainer Spacing - Blaking Mfr. Pump only.

* - Parts Contained in Repair Kit #149K526 and #149K74.

† - Parts Contained in Repair Kit #149K74.

REF. NO.	PART NO.	QUANT. USED	DESCRIPTION
FIG. H - FUEL PUMP PARTS GROUP (Cont.)			
9	149A675	1	*Spring, Rocker Arm (Replaces #149A94).
10	516A113	1	Pin, Rocker Arm (Replaces Pin #516A25).
11		1	Body, Lower - Not Sold Separately - Order New Pump.
12	149A87	1	Link, Rocker (Replaces #149A544) SIDE MOUNTED pumps only.
13	149A118	1	Arm, Rocker - SIDE MOUNTED pumps only.
13A	149-710	1	Arm and Link Set, Rocker (Sold only as a set) - TOP MOUNTED pumps only (ONAN, Blaking or AC Mfr.).
14	149A551	1	Lever, Hand Primer - ONAN Mfr. Pump (Not sold separately for Blaking Mfr. Pump).
15	509-65	2	Seal, "O" Ring - ONAN Mfr. Pump only - Primer Lever.
16	149A404	1	Spring, Primer Lever - ONAN Mfr. Pump only.
17	149A3	2	*Gasket, Fuel Pump Mounting.
18	149-239	4	Washer, Lock - Body Assembly Screw - Pump without Priming Lever.
19	518-129	1	Ring, Retainer - Primer Lever - ONAN Mfr. Pump only.
20	149A858	1	Gasket, Diaphragm.

* - Parts Contained in Repair Kit #149K526 and #149K74.

FIG. J - GOVERNOR GROUP

1	150A678	1	Clip, Governor Sensitivity Adjusting - USED only on Begin Spec "N" Models that HAVE Replacement Arm & Shaft (Arm has NO Screw Tab).
1A	150A136	1	Screw, Governor Sensitivity Adjusting.
2			Spring, Governor.
	150A98	1	For Plants with Parts Key Nos. 1, 2, 3, 4 and 9.
	150A115	1	For Plants with Parts Key Nos. 5, 6 and 7.
			For Plants with Parts Key No. 8.
	150A98	1	110-140 Volt Plants.
	150A115	1	32 Volt Plants.
3			Stud, Governor Spring Tension Adjusting.
	150A96	1	For Plants with Parts Key Nos. 1 through 8.
	150A213	1	For Plants with Parts Key No. 9.

REF. NO.	PART NO.	QUANT. USED	DESCRIPTION
-------------	-------------	----------------	-------------

FIG. J - GOVERNOR GROUP (Cont.)

4			Bracket, Governor Spring Mounting.
	150A40	1	Plants with TOP Mounted Fuel Pump.
	150A159	1	Plants with SIDE Mounted Fuel Pump (Not Illustrated).
			Nut, Governor Speed Adjusting.
5	870-131	1	For Plants with Parts Key Nos. 1 through 8 (Replaces #150A89).
5A	150A33	1	For Plants with Parts Key No. 9.
6	150A639	1	Joint, Ball - Governor Link (Replaces all previously used Ball Joints).
7	150A37	1	Link, Governor Arm to Carburetor.

FIG. K - OIL PUMP GROUP

1			Pump, Oil.
	120A160	1	Plant Prior to Spec "L" with SIDE Mounted Fuel Pump (Replaces #120A133).
	120A200	1	Plants with TOP Mounted Fuel Pump (Replaces #120A91).
2			Cup, Oil Pump Intake.
	120A88	1	Prior to Spec "P".
			Spec "P".
	120A259	1	For Plants with Parts Key Nos. 2 and 5.
	120A88	1	For Plants with Parts Key Nos. 1, 3, 4, 6, 7, 8 and 9.
			Begin Spec "T".
	120A88	1	For Plants with Parts Key No. 2 (50 Cycle only).
	120A259	1	For Plants with Parts Key No. 2 (60 Cycle only).
	120A259	1	For Plants with Parts Key No. 5.
	120A88	1	For Plants with Parts Key Nos. 1, 3, 4, 6, 7, 8 and 9.
3	120A187	1	Stud Assembly, By Pass Adjusting - Includes Stud and Nut (Replaces #120A145).
4	120A140	1	Spring, By-Pass Valve (Replaces #120A101).
5	120A12	1	Valve, By-Pass.
6	120A192	1	Gasket, Oil Pump Mounting.

REF. NO.	PART NO.	QUANT. USED	DESCRIPTION
-------------	-------------	----------------	-------------

FIG. K - OIL PUMP GROUP (Cont.)

	120K161	1	Gasket Kit, Oil Pump - Includes Mounting Gasket plus 3 Body Gaskets.
	122-37	1	Cartridge, Oil Filter - Includes Gasket (Optional).
	122-47	1	Capscrew, Oil Filter Top (Optional).
	122-35	1	Cover, Oil Filter (Optional).
	122-36	1	Gasket, Oil Filter Cover (Optional).
	122-48	1	Gasket, Oil Filter Top Capscrew (Optional).
	309-10	1	Switch, Low Oil Pressure Cut off (Optional).
	122-56	1	Filter Assembly, Oil (Optional).

FIG. L - IGNITION GROUP

			Cover, Ignition Breaker Box.
1	160A152	1	For Plants with "Dust Proof Type" Breaker Box.
	160A35	1	For Plants Prior to Spec "L" with "Open Type" Breaker Box (Not Illustrated).
2	160A150	1	Gasket, Ignition Breaker Box - Not used with "Open Type" Box.
3	160A75	1	Cam, Point Adjusting.
4	160A2	1	Point Set, Breaker.
5	336A530	1	Lead, Ignition Coil to Terminal Block - Begin Spec "P" (Unshielded).
6			Condenser, Breaker Box.
	312A19	1	Prior to Spec "P" (0.5 Mfd.).
	312A69	1	Begin Spec "P" (0.3 Mfd.).
7	336A507	1	Lead, Breaker Box to Terminal Block (Shielded).
8			Gasket.
	160A43	1	Ignition Breaker Box Mounting (Dust Proof Type only).
	160A43	1	Ignition Breaker Box Spacer Mounting (Replaces #160A234) "Dust Proof" Type Box only -
			For Plants with Parts Key Nos. 3, 4, 6, 8 and 9.
9	508-5	2	Grommet, Spark Plug Lead - Begin Spec "M" (In Blower Housing).
9A	509-20	2	"O" Ring, Spark Plug Lead - Prior to Spec "M".

REF. NO.	PART NO.	QUANT. USED	DESCRIPTION
FIG. L - IGNITION GROUP (Cont.)			
10			Plunger, Ignition Breaker.
	160A36	1	For Plants with Parts Key Nos. 1, 2, 5 and 7 Prior to Spec "N".
	160A262	1	For Plants with Parts Key Nos. 1, 2, 5 and 7 Begin Spec "N" (Includes Plunger, Diaphragm and Guide) Replaces #160A253.
	160A96	1	For Plants with Parts Key Nos. 3, 4, 6, 8 and 9 Prior to Spec "N".
	160A268	1	For Plants with Parts Key Nos. 3, 4, 6, 8 and 9 Begin Spec "N" (Includes Plunger, Diaphragm and Guide) Replaces #160A242.
			Lead, Spark Plug.
11			Prior to Spec "M" (Used with ONAN Coil).
	167A1072	1	Right Hand - 15-1/2" Long.
	167A1071	1	Left Hand - 7-1/4" Long.
			Spec "M and N" (Used with Autolite or Delco Coils).
	167A1097	1	Right Hand - 9" Long.
	167A1071	1	Left Hand - 7-1/4" Long (Replaces #167A1098).
12			Begin Spec "P" (Used with Autolite or Delco Coils).
	167A1112	1	Right Hand - 9" Long - Shielded.
	167A1113	1	Left Hand - 7" Long - Shielded.
			Coil, Ignition.
13	166B268	2	Begin Spec "M" (6V. Delco Remy) Mounts in Blower Housing (Replaces #166-91 Autolite).
13A	160B86	1	Prior to Spec "M" (12 Volt ONAN) Mounts on Manifold.
14	160A282	1	Coil only, Magneto Stator - For Plants with Parts Key Nos. 1, 2, 3, 4, 5, 7, 8 and 9 Begin Spec "P" (NOTE: Also used on Spec "N" Plants with Serial #426057, 58, 59, 60 and 61).
14A	160A56	1	Stator Assembly, Magneto - For Plants with Parts Key Nos. 1, 2, 3, 4, 5, 7, 8 and 9 Prior to Spec "P" (NOTE: Not used on Spec "N" Plants with Serial #426057, 58, 59, 60 and 61).
14B	160A281	1	Poleshoe, Magneto Stator - For Plants with Parts Key Nos. 1, 2, 3, 4, 5, 7, 8 and 9 Begin Spec "P" (NOTE: Also used on Spec "N" Plants with Serial #426057, 58, 59, 60 and 61).
15	167-28	2	Plug, Spark.

REF. NO.	PART NO.	QUANT. USED	DESCRIPTION
FIG. L - IGNITION GROUP (Cont.)			
16			Box Assembly, Ignition Breaker - "Dust Proof Type" (Replaces "Open Type" Box). Prior to Spec "P".
	160A250	1	For Plants with Parts Key Nos. 1, 2, 5 and 7 (No Spacer used).
	160A252	1	▲ For Plants with Parts Key Nos. 3, 4, 8 and 9 (With Spacer).
	160A251	1	§ For Plants with Parts Key No. 6 (With Spacer). Begin Spec "P".
	160A257	1	For Plants with Parts Key Nos. 1, 2, 5 and 7 (No Spacer used).
	160A258	1	† For Plants with Parts Key Nos. 3, 4, 8 and 9 (With Spacer).
	160A251	1	§ For Plants with Parts Key No. 6 (With Spacer).
17			Clamp, Ignition Coil - Use with Autolite or Delco Coils - Begin Spec M.
	166A104	2	Prior to Serial #420382.
	166A141	2	Begin Serial #420382.
18	160A558	2	Nipple, Ignition Coil Rubber - Use with Autolite or Delco Coils - Begin Spec M (Replaces #166-105).
19	503-92	1	Sleeve, Coil to Coil Lead - Rubber - Use with Autolite or Delco Coils - Begin Spec M. Lead, Ignition Coil to Ground.
20	336A481	1	Begin Spec "M" - Use with Autolite or Delco Coils - Begin Spec M.
	336A388	1	Prior to Spec "M" (Use with ONAN Coil) Not Illustrated.
21	336A500	1	Lead, Coil to Coil - Use with Autolite or Delco Coils - Begin Spec M.
22	160A428	1	Strap, Ignition Point Terminal to Breaker Box Terminal (Replaces Lead #336A522).
23	332A319	1	Block, Ignition Breaker Box Terminal - Begin Spec "N". Clamp.
24	332A273	1	Magneto Stator Lead to Gear Cover - For Plants with Parts Key Nos. 1, 2, 3, 4, 5, 7, 8 and 9.
25	167A33	1	Magneto Stator Lead & Ground - For Plants with Parts Key Nos. 1, 2, 3, 4, 5, 7, 8, and 9 Prior to Spec "M".
26			Lead, Magneto Stator to Terminal Block - For Plants with Parts Key Nos. 1, 2, 3, 4, 5, 7, 8 and 9.
	336A521	1	Begin Spec "P" (Terminal Block Located at Blower Housing).
	226A211	1	Spec "N" Only (Terminal Block Located at Breaker Box).
27	336A439	1	Lead, Ground - Breaker Box to Manifold.
28	160A246	1	Spacer, Breaker Box (Replaces #160A108) For Plants with Parts Key Nos. 3, 4, 6, 8 and 9.
▲ - If Unit has a Gas-Gasoline Carburetor use Box Assembly #160A250.			
§ - If Unit has a Gas-Gasoline Carburetor use Box Assembly #160A249.			
† - If Unit has a Gas-Gasoline Carburetor use Box Assembly #160A257.			

REF. NO.	PART NO.	QUANT. USED	DESCRIPTION
FIG. L - IGNITION GROUP (Cont.)			
29			Grommet, Rubber.
	508-2	1	Stator Lead to Gear Cover Clamp - For Plants with Parts Key Nos. 1, 2, 3, 4, 5, 7, 8 and 9 - (3/8" I.D.) NOTE: Used also on "Open Type" Ignition Breaker Box Prior to Spec "L".
	508-27	1	Ignition Breaker Box - Use only with "Dust Proof Type" Boxes Prior to Spec "N" (5/8" I.D.).
30	160A261	1	Wick, Ignition Breaker Box Oil Drain - Begin Spec "N".
31	308A165	1	Switch, Remote Start-Stop (Optional) Replaces #308A40 and 308A94 (Parts Key Nos. 3, 4, 6 & 9).
32			Screw, Terminal Block Mounting.
	332A284	2	Blower Housing Terminal Block - Begin Spec "P".
	332A284	1	Ignition Breaker Box - Begin Spec "N".
33	332A272	1	Block, Blower Housing Terminal - Begin Spec "P".
34	167A67	2	Shield, Spark Plug - Includes Shields & Clamp - Begin Spec "P".
	336A565	1	Lead, Blower Housing Momentary Contact Switch to Ignition Coil (Optional) Plants with Low Oil Pressure Cut-off Switch only (Not Illustrated).
	336A564	1	Lead, Blower Housing Momentary Contact Switch to Low Oil Pressure Cut-off Switch (Optional) Plants with Low Oil Pressure Cut-off Switch only (Not Illustrated).
			Lead, Ignition Breaker Box to Ignition Coil (Not Illustrated).
	336A374	1	Prior to Spec "M" (Use with ONAN Coil).
	336A515	1	Spec "M and N" only (Replaces #336A333) Use with Autolite or Delco Coils.
	226A166	1	Lead, Magneto Stator to Ignition Coil (Not Illustrated) For Plants with Parts Key Nos. 1, 2, 3, 4, 5, 7, 8 and 9 Prior to Spec "N".
	304A130	1	Resistor, Ignition Coil - For Plants with Parts Key No. 6 Prior to Spec "M" (115 Volt Plant only).

FIG. M - MUFFLER GROUP

			Muffler, Exhaust.
1	155C159	1	For Plants with Parts Key Nos. 2 and 5 Prior to Serial #386442.
	155C70	1	For Plants with Parts Key Nos. 2 and 5 Begin Serial #386442.
1A	155B76	1	For Plants with Parts Key Nos. 1, 3, 4, 6, 7, 8 and 9.

REF. NO.	PART NO.	QUANT. USED	DESCRIPTION
-------------	-------------	----------------	-------------

FIG. M - MUFFLER GROUP (Cont.)

2	155B127	1	Tubing, Flexible Exhaust - For Plants with Parts Key Nos. 1, 3, 4, 6, 7, 8 and 9.
3	505-30	1	Coupling, Pipe - 1" - Exhaust Muffler - For Plants with Parts Key Nos. 2 and 5.
4	505-3	1	Elbow, Street - Exhaust Outlet - For Plants with Parts Key Nos. 2 and 5.

FIG. N - HOUSING GROUP

1			Cover, Engine.
	405C731	1	For Plants with Parts Key Nos. 1, 3, 4, 6 and 7 (Replaces all previously used covers).
	405C731	1	† For Plants with Parts Key Nos. 8 and 9 (Replaces all previously used covers).
2			Housing, Cylinder Air - Left Hand.
	134C156	1	For Plants with Parts Key Nos. 2 and 5.
	134C169	1	For Plants with Parts Key Nos. 1, 3, 4, 6 and 7.
	134C169	1	† For Plants with Parts Key Nos. 8 and 9.
3			Housing, Blower.
	134A155	1	Prior to Serial #410387 (Replaces #134D24).
	134D178	1	Begin Serial #410387.
4			Housing, Cylinder Air - Right Hand.
	134C157	1	For Plants with Parts Key Nos. 2 and 5.
	134C171	1	For Plants with Parts Key Nos. 1, 3, 4, 6 and 7.
	134C171	1	† For Plants with Parts Key Nos. 8 and 9.
5	193-5		Gauge, Oil Pressure.
6			Line, Oil Gauge to Block.
	120A93	1	Prior to Serial #379165 (Steel) Use Flexible Line #501A4 plus Elbow #502-20.
	501A4	1	Begin Serial #379165 (Flexible).
7			Button, Stop - For Plants with Parts Key Nos. 1, 2, 5 and 7.
	313-8	1	Prior to Spec "L".
	313A18	1	Begin Spec "L".

† - On Plants with Parts Key No. 8 with Specification No. 364 use as for Parts Key 5.
On Plants with Parts Key No. 9 with Specification No. 360 use as for Parts Key 5.

REF. NO.	PART NO.	QUANT. USED	DESCRIPTION
FIG. N - HOUSING GROUP (Cont.)			
8			Lead, Stop Button - For Plants with Parts Key Nos. 1, 2, 5 and 7.
	226A162	1	Spec "L".
	336A238	1	Spec "M and N".
	336A491	1	Begin Spec "P".
9	870-110	As Req.	Nut, Speed Grip - Blower Housing.
10	502-5	1	Elbow, Inverted Female - Oil Gauge (Use with Flexible Oil Line) Begin Serial #379165 (NOTE: Prior to Serial #379165 a Connector #502-17 was used with a Steel Oil Line).
	308-37	1	Switch, Momentary Contact - On Blower Housing (Optional) Plants with Low Oil Pressure Cut-off Switch only. (Not Illustrated).

FIG. P - VACUUM SPEED BOOSTER GROUP

NOTE: For 3500 Watt Plants with Parts Key Nos. 1, 2 and 3 only - Begin Spec "T".

	150K433	1	Kit, Vacuum Speed Booster Replacement - Includes External Spring and Mounting Gasket.
1	150A430	1	Bracket, Spring to Governor Link.
2	150K434	1	Kit, Diaphragm Replacement - Includes Gaskets.
3	150A668	1	Gasket, Diaphragm Plate (Replaces #150A374).
4	150A425	1	Gasket, Booster to Manifold Mounting - Neoprene.
5	150A366	2	Spring, Internal or External.
6	150A376	1	Bracket, Internal Spring Adjusting.
7	516-39	1	Pin, Cotter - 3/32 x 5/8" - Adjusting Bracket.
8	150A666	1	Plate, Diaphragm (Replaces #150A373).
9	516-85	1	Pin, Roll - 3/32 x 3/4" - Diaphragm Lever Pivot.

REF. NO.	PART NO.	QUANT. USED	DESCRIPTION
-------------	-------------	----------------	-------------

FIG. Q - READI-PULL STARTER GROUP

NOTE: For Plants with Parts Key Nos. 1, 2, 5 and 7.

	192K215	1	Kit, Starter - Complete Model "D" - Replaces all previous A, B, or C models - Includes Mounting Ring & Ratchet Wheel.
1	192A45	1	Rope and Grip Assembly.
2	192-43	1	Rope Only - 83" Long.
3	192A44	1	Grip, Rope - Rubber.
4	517A25	1	Plug, Rope Grip.
5			Cover, Starter - Model "D" Illustrated.
	192B38	1	Prior to Spec "P" (Model "A").
	192A144	1	Begin Spec "P" to Serial #476598 (Model "B" or "C").
	192B152	1	Begin Serial #476598 (Model "D") - Replaces 192E336.
6			Cogwheel - Model "D" Illustrated.
	192A61	1	Prior to Spec "P" (Model "A") Includes Screw.
	192A131	1	Begin Spec "P" to Serial #476598 (Model "B" or "C") Includes Screw.
	192A153	1	Begin Serial #476598 (Model "D") Anti-Backlash.
7	516-83	1	Pin, Roll - 3/16 x 5/8 - Recoil Spring - Begin Serial #476598 (Model "D").
8	192A39	1	Spring, Recoil.
9	526A123	1	Washer, Thrust - Sheave Bushing to Cover - Begin Serial #476598 (Model "D").
10	192B180	1	Sheave Assembly, Rope (Model "D" Illustrated) - Use Begin Serial #476598 (Includes Pawls, Ratchet Arms, Pawl Springs, Rope Clamp, Pivot Pins and Rope Clamp Screws) NOTE: Models Prior to Serial #476598, Order New Model "D" Starter #192K215.
11	192A172	2	Pawl - Included in Sheave Assembly (Begin Serial #476598) Model "D".
12			Spring, Pawl - Included in Sheave Assembly (Model "D" Illustrated).
	192A69	2	Prior to Spec "P" (Model "A").
	192A91	2	Begin Spec "P" to Serial #476598 (Model "B" or "C").
	192A165	2	Begin Serial #476598 (Model "D").
13	192A168	2	Arm, Ratchet - Begin Serial #476598 (Model "D").

REF. NO.	PART NO.	QUANT. USED	DESCRIPTION
FIG. Q - READI-PULL STARTER GROUP (Cont.)			
14	516A110	4	Pin, Pivot (Replaces #192A192) Included in Sheave Assembly - (2) Arm, (2) Pawl (Begin Serial #476598) Model "D".
15			Clamp, Rope - Included in Sheave Assembly (Model "D" Illustrated).
	192A89	1	Begin Spec "P" to Serial #476598 (Model "B" or "C").
	192A167	1	Begin Serial #476598 (Model "D").
16			Bearing, Sheave Hub - Included in Sheave Assembly (Model "D" Illustrated).
	192-102	1	Begin Spec "P" to Serial #476598 (Model "B" or "C").
	192A163	1	Begin Serial #476598 (Model "D").
17	192A323	1	Capscrew, Socket Head - 3/8-16 x 1-1/2" - Sheave Bushing to Cover - Begin Serial #476598 (Model "D") Replaces #802-74.
18	870-138	1	Nut, Flexlock - Bushing to Cover Screw - Begin Serial #476598 (Model "D").
19	526A21	4	Washer, Starter to Mounting Ring (Replaces Clamp #192A185) Begin Serial #476598 (Model "D").
20			Ring, Mounting - Starter to Blower Housing - Model "D" Illustrated.
	134C49	1	Prior to Serial #476598 (Model "A, B or C").
	192C186	1	Begin Serial #476598 (Model "D").
21	870-110	4	Nut, Speed Grip - Starter Ring to Blower Housing - Begin Serial #476598 (Model "D").
22			Wheel, Ratchet - Model "D" Illustrated.
	192A2	1	Prior to Spec "P" (Model "A").
	192A111	1	Begin Spec "P" to Serial #476598 (Model "B or C").
	192A170	1	Begin Serial #476598 (Model "D").
23	192A218	2	Capscrew, Socket Head - Ratchet Wheel to Flywheel - Begin Serial #476598 (Model "D").
	192A66	1	Bar, Engaging - Prior to Spec "P" (Model "A") Not Illustrated.
	192A36	1	Bar, Spring Retaining - Prior to Spec "P" (Model "A") Not Illustrated.
	192-81	1	Bushing, Sheave Hub - Prior to Spec "P" (Model "A") Not Illustrated.
	192A65	1	Hub, Rope Sheave Bearing - Prior to Spec "P" (Model "A") Not Illustrated.
	192B100	1	Retainer, Spring - Begin Spec "P" to Serial #476598 (Model "B or C") Not Illustrated.
	518A28	1	Ring, Tension Spring Retaining - Prior to Spec "P" (Model "A") Not Illustrated.
	192A33	1	Spring, Tension - Prior to Spec "P" (Model "A") Not Illustrated.

REF. NO.	PART NO.	QUANT. USED	DESCRIPTION
FIG. R - CARRYING FRAME GROUP			
1	405C381	1	†Weatherhood, Engine & Generator - For Plants with Parts Key Nos. 2 and 5.(Replaces #405C373). Plate, Muffler Baffle.
	405B374	1	For Plants with Parts Key Nos. 2 and 5 Prior to Spec "P" (Not Illustrated).
2	405B523	1	For Plants with Parts Key Nos. 2 and 5 Begin Spec "P".
3			Frame, Carrying.
	403C113	1	▲For Plants with Parts Key Nos. 2 and 5.
	403A260	1	For Plants with Parts Key No. 8 with Specification No. 364 only.
4	405C444	1	▲Baffle, Weatherhood Air - For Plants with Parts Key Nos. 2 and 5.
† - Also used on Plants with Parts Key No. 8 with Specification No. 364 and Plants with Parts Key No. 9 with Specification No. 360.			
▲ - Also used on Plants with Parts Key No. 9 with Specification No. 360.			

FIG. S - DOLLY MOUNTING GROUP (OPTIONAL)

NOTE: For Plants with Parts Key Nos. 2 and 5.

	410C150	1	Dolly Assembly, Complete.
1	410C145	1	Bumper.
2	410C148	2	Bolt, "U".
3	410B146	1	Axle.
4	410B147	2	Handle (Note: Order also #410B179 Channel).
5	403-205	2	Grip, Handle.
6	410B179	2	Channel, "U"(Replaces #410B149).
7	406-62	2	Nut, Handle.
8	410-151	2	Wheel - Less Tire & Tube.
9	410-122	2	Tire - 400 x 8.

REF. NO.	PART NO.	QUANT. USED	DESCRIPTION
-------------	-------------	----------------	-------------

FIG. S - DOLLY MOUNTING GROUP (OPTIONAL (Cont.))

10	410-126	2	Tube - 400 x 8.
11	800-52	2	Bolt, Wedge (Replaces #410A158).
12	410-152	2	Wheel Assembly - Includes Tire and Tube.
13	410A238	2	Lock, Handle.

FIG. T - STARTER-GENERATOR GROUP

NOTE: For Plants with Parts Key No. 6.

1			Coil Set, Field.
	222A1175	1	Prior to Serial #342367.
	222A1247	1	Begin Serial #342367 to Serial #417761.
	222A1263	1	Begin Serial #417761.
2			Frame Only - Does NOT Include Coils or Poleshoes.
	210C79	1	Prior to Serial #342367.
	210C134	1	Begin Serial #342367 to Serial #417761.
	210C160	1	Begin Serial #417761.
			Armature - Includes Bearing if required.
	201A218	1	Prior to Serial #342367 (Not Illustrated).
3	201A353	1	Begin Serial #342367 to Serial #417761.
	201A411	1	Begin Serial #417761.
	212B104	1	Rig Assembly, Brush - Prior to Serial #342367 (Not Illustrated) Includes Brushes, Springs and Hardware.
4	212A146	4	Block Assembly, Brush - Begin Serial #342367 (Includes Brush, Spring and Hardware).
5			Stud, Armature Through.
	520A314	1	Prior to Serial #342367.
	520A461	1	Begin Serial #342367 to Serial #417761.
	520A395	1	Begin Serial #417761.

REF. NO.	PART NO.	QUANT. USED	DESCRIPTION
FIG. T - STARTER-GENERATOR GROUP (Cont.)			
6			Brush, Commutator.
	214A33	4	Prior to Serial #342367.
	214A42	4	Begin Serial #342367.
7			Spring, Commutator Brush.
	212A1004	4	Prior to Serial #342367.
	212A1011	4	Begin Serial #342367.
8			Shoe, Pole.
	221A42	4	Prior to Serial #417761.
	221A79	4	Begin Serial #417761.
9	232B395	1	Support, Armature Bearing - Begin Serial #417761.
10	510A47	1	Bearing, Armature Ball (Replaces #510-38) Begin Serial #342367.
11	212A1084	4	Block, Commutator Brush - Included in #212A146 - Begin Serial #342367.
12	232A393	4	Pin, Brush Spring Pivot - Included in #212A146 - Begin Serial #342367.
13	332A261	1	Block, Terminal.

FIG. U - GENERATOR GROUP

★ - For Parts not listed, contact your nearest ONAN Parts Center or refer order to factory. Be sure to supply the COMPLETE MODEL AND SERIAL NUMBER of the Plant as well as a description of the part required.

1	★	1	Band, End Bell Cover.
2			Hub, Armature Bearing.
	232B249	1	For Plants with Parts Key Nos. 1, 2 and 3 (115 or 230 Volt, Single Phase only).
	232B249	1	For Plants with Parts Key No. 4.
3	★	1	Bell, Generator End.
4			Plate, Brush Rig Spider.
	212A1061	1	For Plants with Parts Key Nos. 1, 2 and 3 (115 or 230 Volt, Single Phase only).
	212A1061	1	For Plants with Parts Key No. 4.

★ - See Note preceding this group.

REF. NO.	PART NO.	QUANT. USED	DESCRIPTION
FIG. U - GENERATOR GROUP (Cont.)			
5	★	1	Rig Assembly, Brush.
6	★	1	Armature Assembly - Includes Bearing and Blower.
7	★	1	Frame Only - Does not include Coils or Poleshoes.
8	205B1	1	Blower, Generator.
9			Stud, Generator Through - Select the ones required.
	520A489	2	11-1/2" Long (5/16"-18 x 5/8" Thrd. - Both ends).
	520A329	2	11-3/4" Long (5/16"-18 x 5/8" Thrd. - Both ends).
	520A502	2	12-3/16" Long (5/16"-18 x 5/8" Thrd. - Both ends).
	520A138	2	12-7/16" Long (5/16"-18 x 5/8" Thrd. - Both ends).
	520A460	2	13-1/16" Long (5/16"-18 x 5/8" Thrd. - Both ends).
	520A139	2	13-3/8" Long (5/16"-18 x 5/8" Thrd. - Both ends).
	520A500	2	13-13/16" Long (5/16"-18 x 5/8" Thrd. - Both ends).
	520A379	2	13-7/8" Long (5/16"-18 x 1/2" Thrd. - Both ends).
10			Adapter, Generator.
			Prior to Spec "AA".
	101B79	1	On Plants where Generator Adapter and Engine Bearing Plate are ONE piece (Early Plants) Not Illustrated.
	231D9	1	On Plants where Generator Adapter (Aluminum) and Engine Bearing Plate are TWO separate pieces, use Adapter #231D61, Scroll #232C815 and (2) Studs. Order Studs as follows: 115 or 230 Volt, Single Phase Plants order #520A489. 115/230 Volt, Single Phase Plants order #520A460. 230 Volt, 3 Phase Plants order #520A460. 460 Volt, 3 Phase Plants order #520A460. 120/208 Volt, 3 Phase Plants order #520A500. All DC Plants order #520A502.
	231A35	1	On Plants where Generator Adapter (Cast Iron) and Engine Bearing Plate are TWO separate pieces, use substituted parts as listed for #231D9.
	231D61	1	Begin Spec "AA".
11			Scroll, Generator.
	232B8	1	Prior to Serial #377275.
	232B21	1	Begin Serial #377275 to Spec "AA".
	232C815	1	Begin Spec "AA".

★ - See Note preceding this group.

REF. NO.	PART NO.	QUANT. USED	DESCRIPTION
FIG. U - GENERATOR GROUP (Cont.)			
12			Stud, Armature Through - Select the one required.
	520A332	1	12-3/8" Long (7/16"-14 x 5/8"; 7/16"-14 x 1-1/8" Thrd.) Replaces #520A33.
	520A408	1	13-1/4" Long (7/16"-14 x 3/4"; 7/16"-14 x 1-1/8" Thrd.) Replaces #520A344.
	520A101	1	14-9/16" Long (7/16"-14 x 3/4"; 7/16"-14 x 1-1/4" Thrd.).
	520A378	1	15-3/16" Long (7/16"-14 x 3/4"; 7/16"-14 x 1-1/8" Thrd.).
13	510A47	1	Bearing, Armature Ball (Replaces #510A1).
14	232A596	1	Clip, Armature Bearing Stop (Replaces #232A316).
15			Spring.
	212A1004	As Req.	Collector Ring Brush - For Plants with Parts Key Nos. 1, 2, 3 and 4.
			Commutator Brush.
	212A1003	4	For Plants with Parts Key Nos. 1 and 2.
	212A1003	4	For Plants with Parts Key No. 3 (EXCEPT 120/208 Volt and 460 Volt, 3 Phase Plants).
	212A1011	4	For Plants with Parts Key No. 3 (120/208 Volt and 460 Volt, 3 Phase Plants only).
	212A1011	4	For Plants with Parts Key Nos. 5, 6, 7, 8 and 9.
16			Condenser.
			Collector Ring.
	312A58	1	For Plants with Parts Key Nos. 1, 2, 3 and 4 (115 or 230 Volt, 1 Phase) - Replaces 312A15.
	312A58	2	For Plants with Parts Key Nos. 1, 2 and 3 (115/230 Volt, Single Phase) - Replaces 312A15.
	312A58	3	For Plants with Parts Key Nos. 1, 2 and 3 (3 Phase Plants only) - Replaces 312A15.
			Commutator.
	312A17	1	For Plants with Parts Key Nos. 1, 2, 3 and 4 (115 or 230 Volt, Single Phase Plants only).
	312A27	1	For Plants with Parts Key Nos. 1, 2 and 3 (EXCEPT 115 or 230 Volt, Single Phase Plants).
	312A27	1	For Plants with Parts Key Nos. 5, 6, 7, 8 and 9.
17	212A1056	4	Support, Brush Rig - For Plants with Parts Key Nos. 1, 2 and 3 (115 or 230 Volt Plants only).
18			Brush, Commutator.
	214A30	4	For Plants with Parts Key Nos. 1 and 2.
	214A30	4	For Plants with Parts Key No. 3 (EXCEPT 120/208 Volt, 3 Phase Plants).
	214A23	4	For Plants with Parts Key No. 3 (120/208 Volt, 3 Phase Plants only).
	214A9	4	For Plants with Parts Key No. 4.
	214A18	4	For Plants with Parts Key Nos. 5, 6, 7, 8 and 9.
19	214A32	As Req.	Brush, Collector Ring - For Plants with Parts Key Nos. 1, 2, 3 and 4 (Replaces #214A8).

REF. NO.	PART NO.	QUANT. USED	DESCRIPTION
FIG. U - GENERATOR GROUP (Cont.)			
20	516-103	2	Pin, Roll - Generator Frame.
21			Cover, Armature Bearing Hub.
	232A372	1	For Plants with Parts Key Nos. 1, 2 and 3 (115 or 230 Volt, Single Phase Plants only).
	232A372	1	For Plants with Parts Key No. 4.
22			Gasket, Air Intake Cover.
	232A1	1	For Plants with Parts Key Nos. 5, 6, 7, 8 and 9.
	232A1	1	For Plants with Parts Key Nos. 1, 2 and 3. (EXCEPT 115 or 230 Volt, Single Phase Plants).
23			Cover, Air Intake.
	232A518	1	For Plants with Parts Key Nos. 1, 2 and 3 (EXCEPT 115 or 230 Volt, Single Phase Plants).
	232A518	1	For Plants with Parts Key Nos. 5, 6, 7, 8 and 9.
24	★	1	Coil Assembly, Field - Set of 4 Coils.
25			Shoe, Pole - Field.
	221A86	4	For Plants with Parts Key Nos. 1, 2 and 3 (2000 watt capacity only).
	221A91	4	For Plants with Parts Key Nos. 1, 2 and 3 (EXCEPT 2000 watt capacity Plants).
	221A91	4	For Plants with Parts Key No. 4.
	221B56	4	For Plants with Parts Key Nos. 5, 6, 7, 8 and 9.
26	★	1	Coil Set, Interpole - For Plants with Parts Key Nos. 5, 6, 7, 8 and 9. (Set of 2 Coils).
27	515-6	1	Key, Generator Blower Mounting.
28	★	2	Shoe, Interpole Coil - For Plants with Parts Key Nos. 5, 6, 7, 8 and 9.

★ - See Note preceding this group.

REF. NO.	PART NO.	QUANT. USED	DESCRIPTION
-------------	-------------	----------------	-------------

FIG. V - CONTROL GROUP

NOTE: In this group it has been necessary, in some cases, to mention voltages, phase, magnet generators, non-magnet generators etc. When checking for your parts key in the plant data table at the beginning of this catalog it will be necessary to remember the correct voltage, phase etc. of your plant. Whenever mention is made as to specification LETTER it refers to the LAST letter in the plant model. When mention is made as to specification NUMBER it refers to the NUMBERS immediately preceding the specification letter.

1			Box, Receptacle.
	301C428	1	For Plants with Parts Key No. 1 Prior to Spec "D" (115 or 230 Volt, Single Phase Plants only).
	301C526	1	For Plants with Parts Key Nos. 2 and 5 (NON-MAGNET Generators only).
	301C428	1	For Plants with Parts Key No. 7 Prior to Spec "D" (115 Volt Plants only).
	301C428	1	For Plants with Parts Key No. 7 Prior to Spec "E" (230 Volt, NON-MAGNET Generators only).
2			Panel, Receptacle Box.
	301B427	1	For Plants with Parts Key No. 1 Prior to Spec "D" (115 or 230 Volt, Single Phase Plants only).
	301B524	1	For Plants with Parts Key Nos. 2 and 5 (NON-MAGNET Generators only).
	301B427	1	For Plants with Parts Key No. 7 Prior to Spec "D" (115 Volt Plants only).
	301B427	1	For Plants with Parts Key No. 7 Prior to Spec "E" (230 Volt NON-MAGNET Generators only)
3	301B202	1	Cover, Control Box - For Plants with Parts Key Nos. 3, 4 and 6.
4			Solenoid, Start.
	307B40	1	For Plants with Parts Key Nos. 3 and 6.
	307B61	1	For Plants with Parts Key Nos. 4 and 9.
5	332-282	1	Terminal, Battery Negative - For Plants with Parts Key Nos. 3 and 4.
6	332-283	1	Terminal, Battery Positive - For Plants with Parts Key Nos. 3 and 4.
7			Terminal, AC Output.
	332-142	2	For Plants with Parts Key Nos. 3 and 4 (115 or 230 Volt, Single Phase Plants only).
	332-142	3	For Plants with Parts Key No. 3 (115/230 Volt, Single Phase, and all 3 Phase Plants).
8			Resistor, Fixed.
	304-139	1	For Plants with Parts Key No. 3 Prior to Spec "G" (2.5 Ohm) 3/4" x 2".
	304-42	1	For Plants with Parts Key No. 3 Prior to Spec "G" (1 Ohm) 3/4" x 4".
	304-120	1	For Plants with Parts Key No. 3 Begin Spec "G" (2 Ohm) 3/4" x 2".
	304-251	1	For Plants with Parts Key Nos. 3 and 4 Begin Spec "AA" (30 Ohm) 3/8" x 1" (Stop Relay).
	304A248	1	For Plants with Parts Key No. 4 Begin Spec "AA" (100 Ohm) 5/16" x 1-3/4" (Stop Relay).

(Continued next page).

REF. NO.	PART NO.	QUANT. USED	DESCRIPTION
FIG. V - CONTROL GROUP (Cont.)			
			Resistor, Fixed (Cont.)
	304-45	1	For Plants with Parts Key No. 4 (4 Ohm) 3/4" x 4" (Replaces #304-33 or #304-155).
	304-120	1	For Plants with Parts Key No. 6 (115 Volt Plants only) 2 Ohm (3/4" x 2").
	304-120	1	For Plants with Parts Key No. 6 (5000 Watt, MAGNET Generator only) 2 Ohm (3/4" x 2") Replaces Adjustable Resistor used previously.
9	332A222	1	Block, Terminal - Remote Control - For Plants with Parts Key Nos. 3, 4, 6 and 9.
10	305A1	1	Regulator, Voltage - Two Step - For Plants with Parts Key Nos. 3 and 6.
11			Relay, Reverse Current.
	307B180	1	For Plants with Parts Key Nos. 3 and 6 (Replaces #307-69 or #307B50).
	307B84	1	For Plants with Parts Key No. 8 (110-140 Volt Plants only).
	307C187	1	For Plants with Parts Key No. 8 (32 Volt Plants only).
	307-27	1	For Plants with Parts Key No. 9 (EXCEPT Specification #360).
	307C187	1	For Plants with Parts Key No. 9 (Specification #360 only).
11A	306-45	1	Relay, Charge - For Plants with Parts Key No. 4.
12			Resistor, Adjustable.
	304-175	1	For Plants with Parts Key No. 3 Begin Spec "G" (1 Ohm) 3/4" x 4".
	304-110	1	For Plants with Parts Key Nos. 5, 6 and 7 (115 Volt Plants only) 60 Ohm (3/4" x 4").
	304-127	1	For Plants with Parts Key Nos. 5 and 7 (230 Volt Plants only) 300 Ohm (3/4" x 4").
	304-110	1	For Plants with Parts Key No. 8 (110-140 Volt Plants only) 60 Ohm (3/4" x 4").
	304-12	1	For Plants with Parts Key No. 6 (3000 Watt, MAGNET Generator only) 1.5 Ohm (1-3/4 x 2") Replaces Fixed Resistor #304-168.
13			Box, Control - Bare.
	301C687	1	For Plants with Parts Key No. 3 Prior to Spec "AA" (Replaces #301C452).
	301C907	1	For Plants with Parts Key No. 3 Begin Spec "AA".
	301C478	1	For Plants with Parts Key No. 4 Prior to Spec "AA".
	301C1025	1	For Plants with Parts Key No. 4 Begin Spec "AA".
	301C478	1	For Plants with Parts Key No. 6 Prior to Spec "M" (115 Volt Plants only).
	301C683	1	For Plants with Parts Key No. 6 Begin Spec "M" (115 Volt Plants only).
	301C683	1	For Plants with Parts Key No. 6 (MAGNET Generators only).
	301C182	1	For Plants with Parts Key No. 8 (110-140 Volt Plants only).
	301C832	1	For Plants with Parts Key No. 8 (32 Volt Plants only).
	301C492	1	For Plants with Parts Key No. 9 (EXCEPT Specification #360).
	301C816	1	For Plants with Parts Key No. 9 (Specification #360 only).

REF. NO.	PART NO.	QUANT. USED	DESCRIPTION
FIG. V - CONTROL GROUP (Cont.)			
14			Duct, Control Box Wire.
	301A386	1	For Plants with Parts Key Nos. 3 and 9.
	301A386	1	For Plants with Parts Key No. 4 Begin Spec "AA".
	301A386	1	For Plants with Parts Key No. 6 (MAGNET Generators only).
	301A422	1	For Plants with Parts Key No. 6 (115 Volt Plants only).
15	313-8	2	Button, Start or Stop - For Plants with Parts Key Nos. 3 and 9.
15A	308A29	1	Button, Stop - For Plants with Parts Key No. 8 (32 Volt Plants only).
16			Ammeter, Charge.
	302A58	1	For Plants with Parts Key No. 3 (10-0-10).
	302A61	1	For Plants with Parts Key No. 4 (30-0-30).
	302-60	1	For Plants with Parts Key No. 6 (20-0-20).
	302A64	1	For Plants with Parts Key No. 9 (100-0-100).
17	312A57	1	Condenser, Start Solenoid - For Plants with Parts Key Nos. 3, 4 and 9 (1 Mfd.).
18			Condenser, Output Terminals.
	312A17	1	For Plants with Parts Key No. 4 (.5 Mfd.).
	312A27	1	For Plants with Parts Key No. 8 (110-140 Volt Plants only) .5 Mfd.
			For Plants with Parts Key No. 3.
	312A58	1	230 Volt, Single Phase Plants only (1 Mfd.).
	312A17	1	115 or 115/230 Volt, Single Phase Plants only (.5 Mfd.).
	312A27	1	115/230 Volt, Single Phase Plants only (Right Hand) .5 Mfd.
	312A58	1	120/208 Volt, 3 Phase Plants only (1 Mfd.).
	312A16	1	230 Volt, 3 Phase Plants only (.01 Mfd.).
	312A58	1	230 Volt, 3 Phase Plants only (1 Mfd.).
	312A22	3	460 Volt, 3 Phase Plants only (.1 Mfd.).
19	301A553	1	Bracket, Receptacle Box Mounting - For Plants with Parts Key No. 2 (115 or 115/230 Volt, Single Phase Plants only).
20			Bracket, Control Box Mounting.
	301A407	1	For Plants with Parts Key Nos. 3 and 4 (Begin Spec "AA").
	301A407	1	For Plants with Parts Key No. 6.

REF. NO.	PART NO.	QUANT. USED	DESCRIPTION
FIG. V - CONTROL GROUP (Cont.)			
21			Cover, Box.
			For Plants with Parts Key No. 1 (For Outlet Box).
	330P2	1	Prior to Spec "D" - 115/230 Volt, Single Phase Plants and 230 Volt, 3 Phase Plants only.
	330-4	1	Spec "D" through Spec "L" - All Voltages.
			Begin Spec "M".
	330-4	1	115 or 230 Volt, Single Phase Plants only.
	330-6	1	115/230 Volt, Single Phase Plants only.
	330P2	1	230 Volt, 3 Phase Plants only.
	330-6	1	For Plants with Parts Key No. 5 (MAGNET Generators only) For Knockout Box.
	330P2	1	For Plants with Parts Key No. 6 (MAGNET Generators only) For Knockout Box.
			For Plants with Parts Key No. 7.
	330-6	1	5000 Watt, MAGNET Plants (For Knockout Box).
	330-6	1	115 Volt Plants Begin Spec "D" (For Resistor Box).
	330-6	1	230 Volt, NON-MAGNET Plants Begin Spec "E" (For Resistor or Knockout Box).
22			Box, Outlet.
			For Plants with Parts Key No. 1
			Prior to Spec "D".
	301B495	1	115/230 Volt, Single Phase Plants; and 230 Volt, 3 Phase Plants only.
	330-5	1	Spec "D" through Spec "L" (All Voltages).
			Begin Spec "M".
	330-5	1	115 or 230 Volt, Single Phase Plants only.
	330-28	1	115/230 Volt, Single Phase Plants only.
	330A1	1	230 Volt, 3 Phase Plants only.
	330-28	1	For Plants with Parts Key Nos. 5 and 6 (MAGNET Generators only).
			For Plants with Parts Key No. 7.
	330-28	1	5000 Watt, MAGNET Generators only.
	301B495	1	230 Volt NON-MAGNET Generators (Spec "E" only).
23			Switch, Start-Stop.
	308-26	1	For Plants with Parts Key Nos. 4 and 6.
	308A9	1	For Plants with Parts Key No. 8 (110-140 Volt Plants only).

REF. NO.	PART NO.	QUANT. USED	DESCRIPTION
FIG. V - CONTROL GROUP (Cont.)			
24			Receptacle - NON-MAGNET Generators only.
	323P23	2	For Plants with Parts Key No. 1 Prior to Spec "D" (115 or 230 Volt, Single Phase Plants only) Twistlock.
	323-62	2	For Plants with Parts Key No. 2 (EXCEPT 230 Volt, 3 Phase Plants) Twistite.
	323-11	2	For Plants with Parts Key No. 2 (EXCEPT 230 Volt, 3 Phase Plants) Twistlock.
	323-11	4	For Plants with Parts Key No. 2 (230 Volt, 3 Phase Plants only) Twistlock.
	323-61	1	For Plants with Parts Key No. 5 Prior to Spec "M" (Twistite).
	323P23	1	For Plants with Parts Key No. 5 Prior to Spec "M" (Twistlock).
	323-62	2	For Plants with Parts Key No. 5 Begin Spec "M" (Twistite).
	323P23	2	For Plants with Parts Key No. 5 Begin Spec "M" Twistlock - Replaces 323P140.
	323P23	2	For Plants with Parts Key No. 7 Prior to Spec "D" (115 Volt Plants only) Twistlock.
	323P23	1	For Plants with Parts Key No. 7 Prior to Spec "E" (230 Volt NON-MAGNET Plants only)
25	323P48	1	For Plants with Parts Key No. 1 Prior to Spec "D" (115 or 230 Volt, Single Phase Plants only) Duplex.
	323P48	1	For Plants with Parts Key No. 7 Prior to Spec "D" (115 Volt Plants only) Duplex.
	323P48	1	For Plants with Parts Key No. 7 Prior to Spec "E" (230 Volt NON-MAGNET Plants only) Duplex
26	336A992	1	Lead, Stop - Shielded - For Plants with Parts Key No. 3.
27			Switch, Toggle - Manual or Electric Start.
	308-2	1	For Plants with Parts Key Nos. 3 and 4 Begin Spec "AA".
	308-5	1	For Plants with Parts Key No. 6 (Replaces #308-6).
	308-5	1	For Plants with Parts Key No. 8 (32 Volt Plants only) Replaces #308-6.
28	308-7	1	Switch, High-Low Charge Rate - For Plants with Parts Key No. 4.
29			Grommet, Rubber - Use as required.
	508-2		3/8" for 7/16" Hole.
	508-8		1/2" for 7/8" Hole.
	508-1		3/4" for 1-1/16" Hole.
	508-9		1" for 1-5/16" Hole.
30	416-73	2	Battery, 6 Volt - For Plants with Parts Key No. 3.
31	416A71	2	Cable, Battery - Positive or Negative - For Plants with Parts Key No. 3.
32	416A4	1	Cable, Battery Jumper - For Plants with Parts Key No. 3.

REF. NO.	PART NO.	QUANT. USED	DESCRIPTION
FIG. V - CONTROL GROUP (Cont.)			
33	307B253	1	Relay, Stop - For Plants with Parts Key Nos. 3 and 4 Begin Spec "AA".
34	314A28	1	Filter, Ignition - For Plants with Parts Key Nos. 3, 4 and 9 Prior to Spec "AA".
35			Rheostat.
	303-69	1	For Plants with Parts Key Nos. 5, 6 and 7 (3000 Watt, MAGNET Generators only).
	303-31	1	For Plants with Parts Key Nos. 5, 6 and 7 (5000 Watt, MAGNET Generators only).
	303-8	1	For Plants with Parts Key No. 8 (110-140 Volt Plants only).
	303-74	1	For Plants with Parts Key No. 8 (32 Volt Plants only).
	303-2	1	For Plants with Parts Key No. 9 (Specification #360 only).
36	301C526	1	Box, Rheostat - For Plants with Parts Key No. 9 (Specification #360 only).
37	301B817	1	Panel, Rheostat Box - For Plants with Parts Key No. 9 (Specification #360 only).
38			Box, Resistor.
	301B482	1	For Plants with Parts Key No. 5 (NON-MAGNET Generators).
	301B206	1	For Plants with Parts Key No. 8 (110-140 Volt Plants only).
			For Plants with Parts Key No. 7.
	301B482	1	115 Volt Plants Prior to Spec "D".
	301B482	1	230 Volt Plants Prior to Spec "E".
	301B472	1	230 Volt Plants - Spec "E" only.
39			Box and Guard, Resistor.
	301C536	1	For Plants with Parts Key No. 7 Begin Spec "D" (115 Volt Plants only).
	301C536	1	For Plants with Parts Key No. 7 Begin Spec "F" (230 Volt Plants only).
40	301B567	1	Bracket, Rheostat Box Mounting - For Plants with Parts Key No. 9 (Specification #360 only).
41			Bracket, Resistor Mounting - For Plants with Parts Key No. 6.
	304A36	1	115 Volt Plants only, Begin Spec "M".
	304A36	1	MAGNET Generators only.
42			Panel, Control Box - For Plants with Parts Key No. 8.
	301B271	1	110-140 Volt Plants only.
	301B831	1	32 Volt Plants only.
43	335B15	1	Cable Assembly, Generator to Control - For Plants with Parts Key No. 8 (110-140 Volt Plants only).
44			Ammeter, DC - For Plants with Parts Key No. 8.
	302-30	1	110-140 Volt Plants only (0-50).
	302-238	1	32 Volt Plants only (0-150) Replaces #302-32 or #302-207.

REF. NO.	PART NO.	QUANT. USED	DESCRIPTION
-------------	-------------	----------------	-------------

FIG. V - CONTROL GROUP (Cont.)

45	320-51	1	Breaker, Circuit - For Plants with Parts Key No. 8 (32 Volt Plants only).
46	302-49	1	Voltmeter - For Plants with Parts Key No. 8 (32 Volt Plants only).
47	302B71	1	Shunt, Ammeter - For Plants with Parts Key No. 8 (32 Volt Plants only).
48	302A74	1	Bracket, Shunt - For Plants with Parts Key No. 8 (32 Volt Plants only).
49	307-41	1	Relay, Contactor - For Plants with Parts Key No. 8 (110-140 Volt Plants only).
50	332-18	1	Block, Terminal - For Plants with Parts Key No. 8 (110-140 Volt Plants only).
51	321-17	1	Block, Fuse - For Plants with Parts Key No. 8 (110-140 Volt Plants only).
52	321-18	1	Fuse, 40 Amp. - For Plants with Parts Key No. 8 (110-140 Volt Plants only).
53	321-2	1	Clip, Fuse - For Plants with Parts Key No. 8 (110-140 Volt Plants only).

SERVICE KITS & MISCELLANEOUS

101K115	1	Gasket Kit, Rear Bearing Plate.
101K181	2	Bearing Kit, Crankshaft - Front or Rear - Precision Type.
105A72	1	Gear Set, Timing.
113-11	2	Ring Set, Piston - For 1 Piston.
113-51	2	Ring Set, Piston - OPTIONAL (for 1 Piston) Expander Type - Chrome Faced.
120K161	1	Gasket Kit, Oil Pump.
142-33	1	Gasket Kit, Carburetor.
142K295	1	Repair Kit, Carburetor
		Repair Kit, Fuel Pump.
149K74	1	Prior to Spec "L".
149K526	1	Begin Spec "L".
150K433	1	Booster Replacement Kit, Vacuum Speed - For 3500 Watt Plants with Parts Key Nos. 1, 2 and 3 Begin Spec "T".
150K434	1	Diaphragm Replacement Kit, Vacuum Speed Booster - For 3500 Watt Plants with Parts Key Nos. 1, 2 and 3 Begin Spec "T".
160A2	1	Point Set, Ignition Breaker.
168K35	1	Gasket Kit, Plant.

REF. NO.	PART NO.	QUANT. USED	DESCRIPTION
SERVICE KITS & MISCELLANEOUS (Cont.)			
	192K215	1	Starter Kit, Readi-Pull (Model "D") For Plants with Parts Key Nos. 1, 2, 5 and 7.
	410C150	1	Dolly Assembly - For Plants with Parts Key Nos. 2 and 5 (Optional).
	412B5	1	Cover, Canvas - Heavy Duty, Waterproof.
			Overhaul Kit, Plant.
	522K68	1	For Plants with Parts Key Nos. 1, 2 and 3 Prior to Spec "AA".
	522K135	1	For Plants with Parts Key Nos. 1, 2 and 3 Begin Spec "AA".