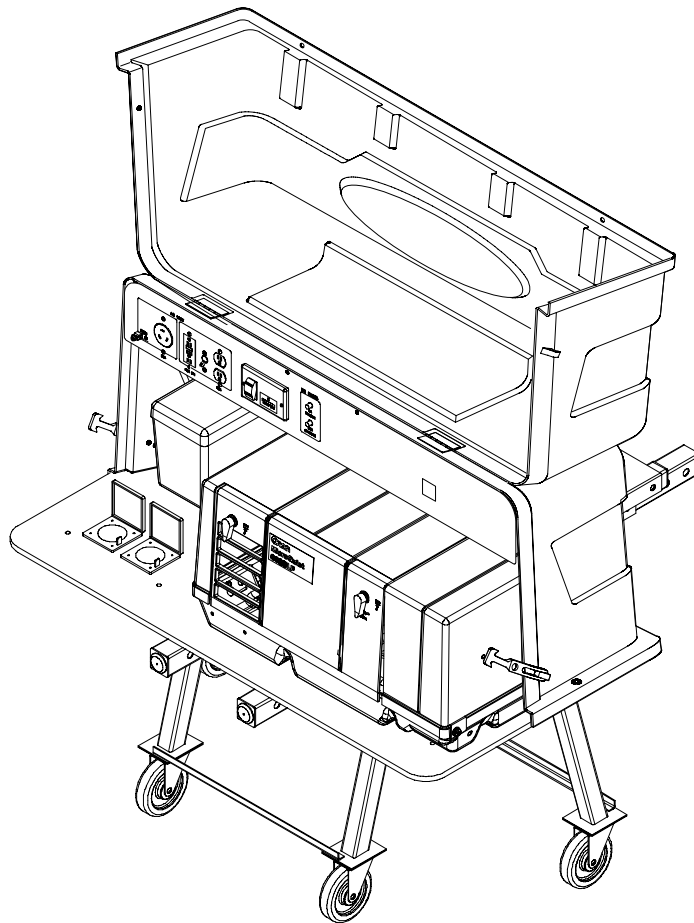


# JuiceBox™

## Operator's Manual



# Table of Contents

---

TITLE	PAGE
<b>SAFETY PRECAUTIONS</b> .....	<b>iii</b>
<b>SECTION 1. INTRODUCTION</b> .....	<b>1-1</b>
About This Manual .....	1-1
How to Obtain Service .....	1-1
Overview .....	1-2
<b>SECTION 2. TRANSPORTATION AND OPERATION</b> .....	<b>2-1</b>
Hitch Requirements .....	2-1
Transporting the JuiceBox .....	2-1
Installing the Hitch Spline .....	2-1
Installing the JuiceBox .....	2-2
Removing the JuiceBox and Hitch Spline from the Vehicle/Trailer .....	2-3
JuiceBox Setup .....	2-4
Gasoline Fuel System .....	2-4
Propane Fuel System .....	2-6
Preparing the JuiceBox for Transportation (Pack-Up) .....	2-7
Gasoline Fuel System .....	2-7
Propane Fuel System .....	2-7
Operation .....	2-8
Genset Control .....	2-8
Remote Control .....	2-8
Battery Charger .....	2-8
<b>SECTION 3. PARTS INFORMATION</b> .....	<b>3-1</b>

THIS PAGE INTENTIONALLY BLANK

# Safety Precautions

---

**Thoroughly read this manual and the generator set Operator's Manual, Battery Charger Manuals, and EC-15W Instruction Sheet before using the JuiceBox or operating the generator set. Safe operation and top performance can be obtained only when equipment is operated and maintained properly.**

The following symbols in this manual alert you to potential hazards to the operator, service person and equipment.

**⚠ DANGER** *alerts you to an immediate hazard which will result in severe personal injury or death.*

**⚠ WARNING** *alerts you to a hazard or unsafe practice which can result in severe personal injury or death.*

**⚠ CAUTION** *alerts you to a hazard or unsafe practice which can result in personal injury or equipment damage.*

Electricity, fuel, exhaust, moving parts, and batteries present hazards which precautions must be taken to prevent severe personal injury or death.

## GENERAL PRECAUTIONS

- When used in conjunction with a recreational vehicle, a functional CO detector is strongly recommended.
- Keep children away from the JuiceBox and the generator set.
- Keep multi-class ABC fire extinguishers handy. Class A fires involve ordinary combustible materials such as wood and cloth; Class B fires, combustible and flammable liquid fuels and gaseous fuels; Class C fires, live electrical equipment. (ref. NFPA No. 10).

- Benzene and lead found in some gasolines have been identified by some state and federal agencies as causing cancer or reproductive toxicity. Do not ingest, inhale, or contact gasoline or its vapors.
- Used engine oil has been identified by some state and federal agencies as causing cancer or reproductive toxicity. Do not ingest, inhale, or contact used oil or its vapors.
- Do not store anything on the generator set, such as oil cans, oily rags, chains, or wooden blocks. A fire could result or operation could be adversely affected.
- Keep the genset and its compartment clean. Excess oil can catch fire. Dirt and gear stowed in the compartment can restrict cooling air.
- Do not work on the genset when mentally or physically fatigued or after consuming alcohol or drugs.

## ENGINE EXHAUST IS DEADLY!

- Operate the generator set outdoors only. Stay away from the exhaust outlet.
- Make sure the generator set exhaust will not enter windows, doors, vents, or air intakes of adjacent vehicles, buildings, or boats.
- NEVER USE THE GENERATOR SET INSIDE a home, garage, crawl space, barn, shed, cabin, boat, boat house, RV, or tent. Never use the generator set in a confined outdoor space such as an alley, ditch, parking garage, or courtyard, or in any other space where exhaust can accumulate. Note that HAZARDOUS CARBON MONOXIDE LEVELS FROM ENGINE EXHAUST CAN ACCUMULATE INDOORS EVEN WHEN ALL WINDOWS AND DOORS ARE OPEN AND FANS ARE RUNNING.

## **FUEL IS FLAMMABLE AND EXPLOSIVE!**

- Gasoline and LPG are highly flammable and explosive and can cause severe personal injury or death. Do not smoke or turn electrical switches ON or OFF where fuel fumes, tanks or equipment are present. Keep flames, sparks, pilot lights, arc-producing equipment and switches and all other sources of ignition well away. Keep a type ABC fire extinguisher handy.
- Refill the fuel tank outdoors only.
- Never fill the fuel tank while it is connected to the generator set.
- DO NOT fill the fuel tank while the engine is running. A hot engine can ignite the fuel.
- Static electric sparks caused by fuel flowing through a service station pump nozzle can ignite gasoline. Set the fuel tank on the ground and slowly fill it.
- Do not smoke or allow an open flame near the generator set. Keep flame, sparks, pilot lights, arc-producing equipment and switches and all other sources of ignition well away.
- Fuel lines must be secured, free of leaks, and separated or shielded from electrical wiring.
- Leaks can lead to explosive accumulations of gas. LPG sinks when released and can accumulate inside housings and basements and other below-grade spaces. Prevent leaks and the accumulation of gas.

## **GENERATOR VOLTAGE IS DEADLY!**

- DO NOT CONNECT THE GENERATOR SET DIRECTLY TO ANY BUILDING ELECTRICAL SYSTEM OR ANY OTHER SOURCE OF ELECTRICAL POWER. Back-feed could cause electrocution of utility line workers and damage to equipment. An approved switching device must be used to prevent interconnections. A trained and experienced electrician

must make electrical connections when the generator set is used for emergency power.

- Never operate the generator set in rain or snow or when it is sitting on wet ground.
- Make sure clothing, shoes, and skin are dry when handling electrical equipment.
- Use caution when working on live electrical equipment. Remove jewelry, make sure clothing and shoes are dry, stand on a dry wooden platform or rubber insulating mat and use tools with insulated handles.

## **MOVING PARTS CAN CAUSE SEVERE PERSONAL INJURY OR DEATH**

- Before performing any maintenance on the generator set, disconnect the negative (-) cable from the battery and disconnect the remote harness cable at the genset to prevent accidental starting.
- Do not wear loose clothing or jewelry while servicing the generator set. Loose clothing and jewelry can become caught in moving parts. Jewelry can short out electrical contacts, causing sparks, flame, and electrical shock.
- Keep hands away from moving parts.
- Keep guards in place over fans, belts, pulleys, and other moving parts.
- Make sure that fasteners and clamps on the generator set are tight. Keep guards in position over fans, rotors, etc.

## **BATTERY GAS IS EXPLOSIVE**

- Wear safety glasses when servicing batteries.
- Do not smoke.
- To reduce arcing when disconnecting or reconnecting battery cables, always disconnect the negative (-) battery cable first and reconnect it last.

# Section 1. Introduction

## ABOUT THIS MANUAL

This manual provides information for operating and maintaining the JuiceBox™.

A separate genset Operator's Manual is included with each unit. It contains information on operating and maintaining the generator set. Separate documents are also included for the Energy Command ED-15W wireless remote control and the battery charger. Study all manuals carefully and comply with all warnings and cautions before disconnecting/connecting the JuiceBox from/to the vehicle's hitch or operating the equipment inside of the JuiceBox.

Because the JuiceBox includes an installed generator set, this manual supersedes the installation instructions included in the genset Installation Manual.

## HOW TO OBTAIN SERVICE

When the JuiceBox or the generator set requires service, contact your nearest dealer or distributor. Factory-trained Parts and Service representatives are ready to handle all your service needs.

A copy of the warranty form is in the literature package included with each unit. A generator service manual is available on special order through an Onan dealer or distributor.

When contacting an authorized service center concerning genset parts or service issues, supply the complete model number and serial number listed on the nameplate (Figure 1-1).

**⚠ WARNING** *Improper service or replacement of parts can lead to severe personal injury or death and to damage to equipment and property. Service personnel must be qualified to perform electrical and mechanical service.*

**NOTE:** When checking the oil level in the generator, make sure the generator is level to get the most accurate reading. Checking the oil level when the JuiceBox is setting on an uneven surface or when it is connected to the vehicle's hitch and lifted off of the ground will not give an accurate reading and may result in oil running out of the dipstick hole. If the JuiceBox is connected to the vehicle's hitch and lifted off of the ground, move the vehicle to a location with the appropriate incline so that the generator is level before checking the oil level.

See Section 3 of this manual for parts identification numbers and required quantities and for exploded views of the JuiceBox subassemblies. Genuine Onan® replacement parts are recommended for best results.

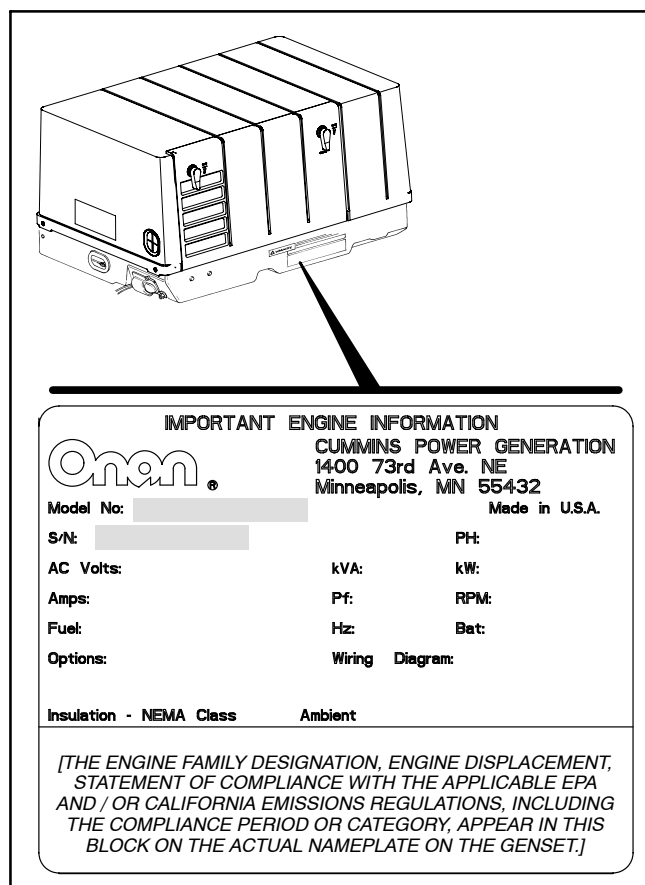


FIGURE 1-1. TYPICAL NAMEPLATE

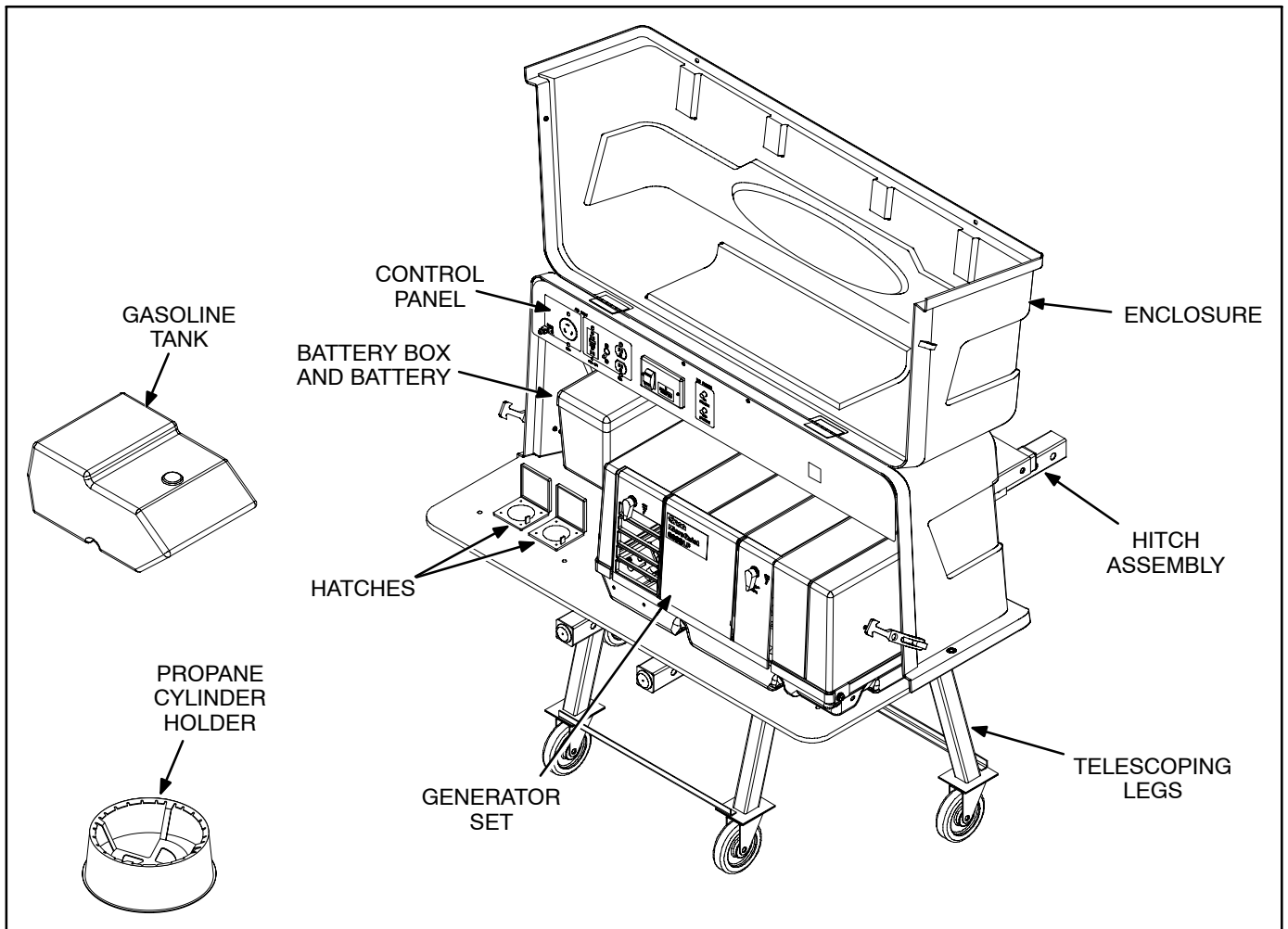
## OVERVIEW

The JuiceBox (see Figure 1-2) is a self-contained, hitch-mounted towable portable power source that includes the following.

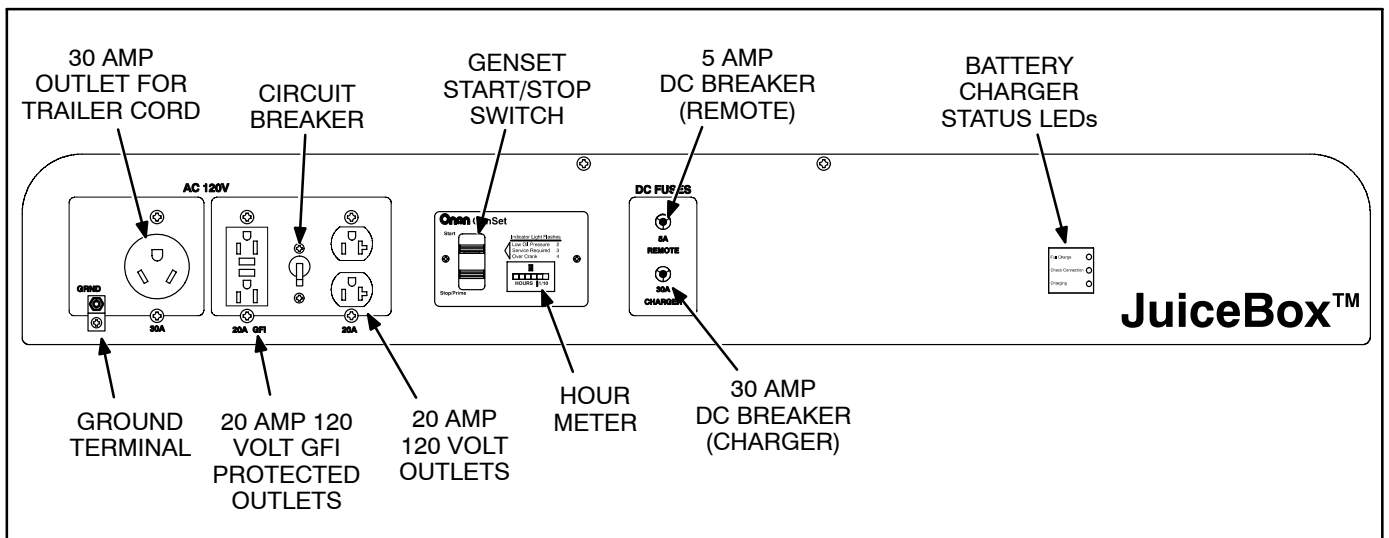
- MicroQuiet 4000 KY (gasoline) or 3600 KY (LP) Generator Set – Refer to the separate generator set Owner's Manual for details. The JuiceBox includes a genset that uses either gasoline or liquid propane.
- Fuel System – Includes a fuel line and one of the following.
  - Gasoline Tank
  - Propane Regulator, Hose, and Propane Cylinder Holder
- Battery Box secured with a strap
- Cable Hatches – One hatch is to be used for the fuel line and the other one is to be used for all electrical connections.
- JuiceBox Enclosure – Includes the hitch assembly and cable hatches.
- Telescoping Legs (Landing Gear) – Short and long versions
- Hitch Assembly – Includes the hitch spline and the hitch frame subassemblies.
- Control Panel – Includes the following (see Figure 1-3).
  - 30 amp receptacle
  - Two 20 amp 120 volt GFI protected outlets
  - Two 20 amp 120 volt outlets
  - Circuit breaker
  - Genset Start/Stop switch
  - Hour meter
  - 5 amp DC breaker (EC-15W)
  - 30 amp DC breaker (charger)
  - 6 amp battery charger
  - EC-15W remote start
  - Grounding terminal (Connection for Earth ground/bonding)

The following components are not supplied with the JuiceBox.

- Group 26 with 525 CCA battery
- Propane tank (for propane gensets)



**FIGURE 1-2. JUICEBOX**



**FIGURE 1-3. CONTROL PANEL**



THIS PAGE INTENTIONALLY BLANK

# Section 2. Transportation and Operation

## HITCH REQUIREMENTS

The following hitch criteria requirements must be met prior to installing the JuiceBox™ on a travel trailer or 5<sup>th</sup> wheel.

- Verify with your trailer manufacturer prior to use that the JuiceBox can safely be used to transport the weight of the JuiceBox (360 lbs) when it is mounted on the rear of the trailer.
- Consult with a professional hitch installer to verify that proper tongue weight for trailers and 5<sup>th</sup> wheel hitch weights can be maintained when towing.
- The trailer or 5<sup>th</sup> wheel must be at minimum 26 feet long.
- The trailer or 5<sup>th</sup> wheel must weigh a minimum of 6000 pounds.
- A 2-inch receiver Class III hitch is properly installed. If a 2-inch receiver hitch is not installed, consult a professional hitch installer to have one installed.

**⚠ CAUTION** *Due to the wide variety of RV frame configurations and materials of construction, it is the buyer's responsibility to verify that both the hitch installer and the towable manufacturer validate that the structural integrity of the hitch installation as suitable to support a 360-lb load. The failure to make that determination can result in property damage and/or personal injury.*

## TRANSPORTING THE JUICEBOX

The JuiceBox is designed to be transported behind a vehicle or trailer. The hitch assembly fits a 2-inch size receiver style hitch and requires a minimum of a Class III tow rating.

Before the JuiceBox can be transported, the hitch spline must be installed on the hitch and then the JuiceBox must be installed on the hitch spline.

## Installing the Hitch Spline

The Silent Hitch Pins included with the hitch frame assembly are designed to prevent inherent rattle that can occur when placed into the receiver hitch.

One hitch pin secures the hitch spline assembly (see Figure 2-1) to the receiver hitch and the pin clip is used to secure the pin. The other hitch pin assembly secures the hitch spline assembly to the hitch frame assembly. Both Silent Hitch Pin™ assemblies must be properly installed before transporting the JuiceBox.

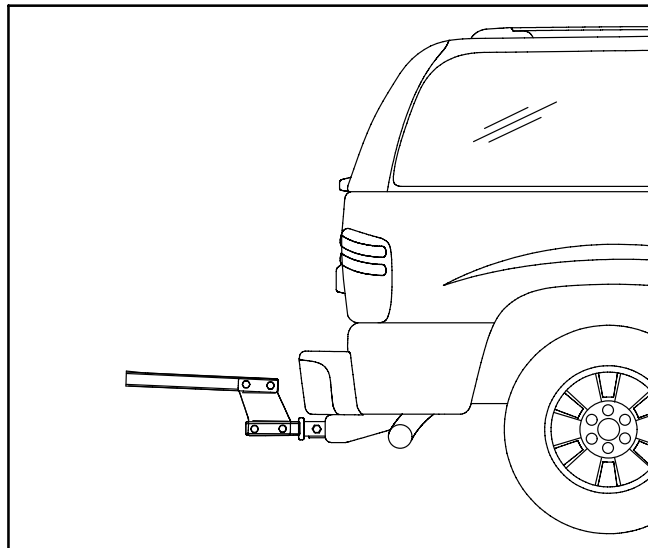
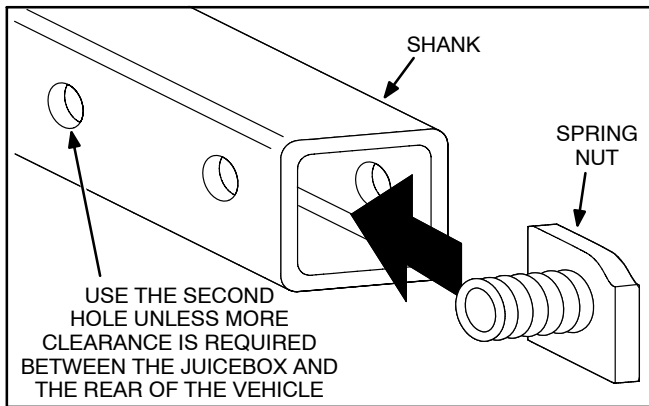


FIGURE 2-1. THE HITCH SPLINE

**⚠ WARNING** *Separation of the JuiceBox from the vehicle's hitch while transporting it can result in severe personal injury or death and equipment damage. Always make sure that the JuiceBox hitch assembly is securely attached to the vehicle's hitch before transporting the JuiceBox. The Silent Hitch Pins must be firmly tightened to work properly. Make sure you use the hex head Silent Hitch Pin to attach the shank to the receiver hitch and use a wrench to securely tighten it.*

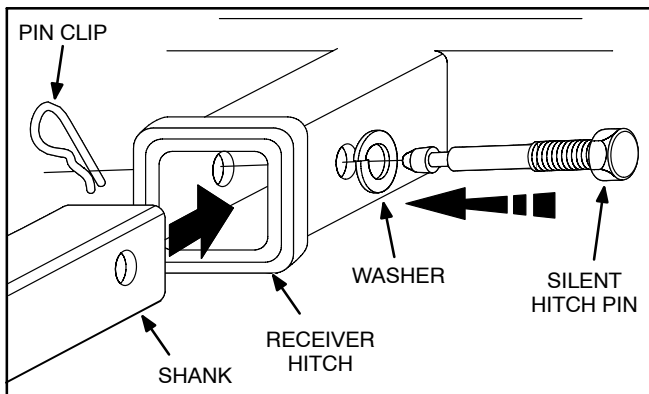
1. Orient the shank with the two 5/8" holes toward the receiver hitch on the vehicle.
2. Insert the spring nut from the Silent Hitch Pin assembly into the shank and line it up with the selected shank hole (see Figure 2-2),

**NOTE:** Use the bolt hole in the shank that places the hitch frame assembly as close to your vehicle as possible. If more clearance is needed, use the last hole in the shank.



**FIGURE 2-2. INSTALLING THE SPRING NUT**

- Slide the shank with the installed spring nut into the vehicle hitch and line up the shank's bolt holes with the hole in the hitch (see Figure 2-3). Make sure the washer is on the Silent Hitch Pin and thread it into the threaded spring nut.

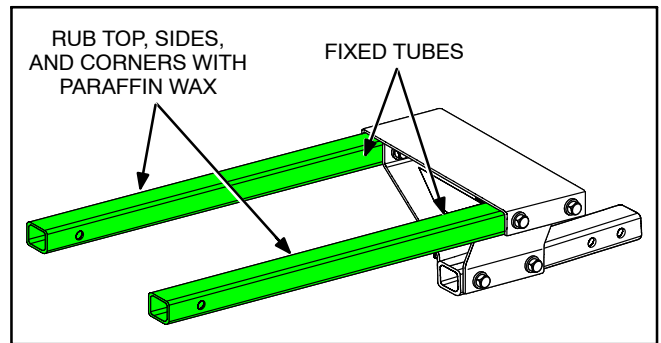


**FIGURE 2-3. INSTALLING THE HITCH PIN AND PIN CLIP**

- Use a wrench to securely tighten the Silent Hitch Pin to 30–60 ft-lbs (41–81 N•m) of torque.
- Install the pin clip on the end of the Silent Hitch Pin.

### Installing the JuiceBox

- Rub the top, sides, and corners of the spine's fixed tubes with Paraffin wax (see Figure 2-4). This reduces friction, provides telescope smoothness, and protects the powder coated paint from wear. Applying Paraffin wax results in clean, hassle-free operation. Once applied, it stays put and stays clean.

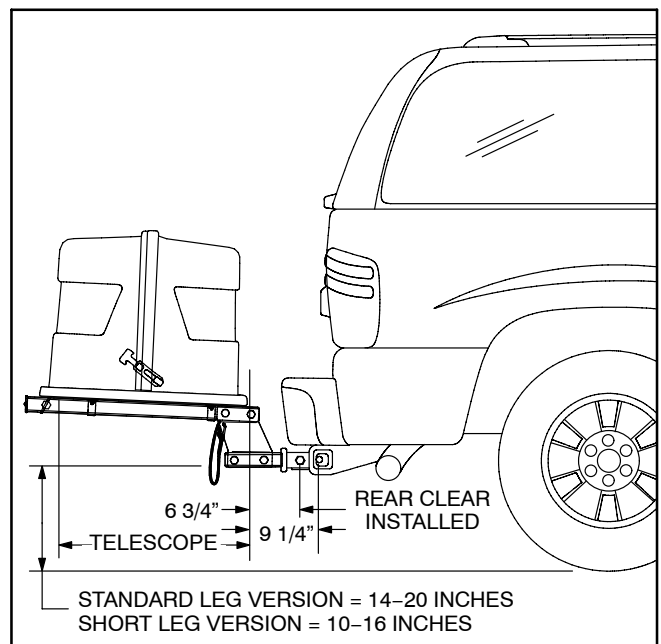


**FIGURE 2-4. APPLYING PARAFFIN WAX**

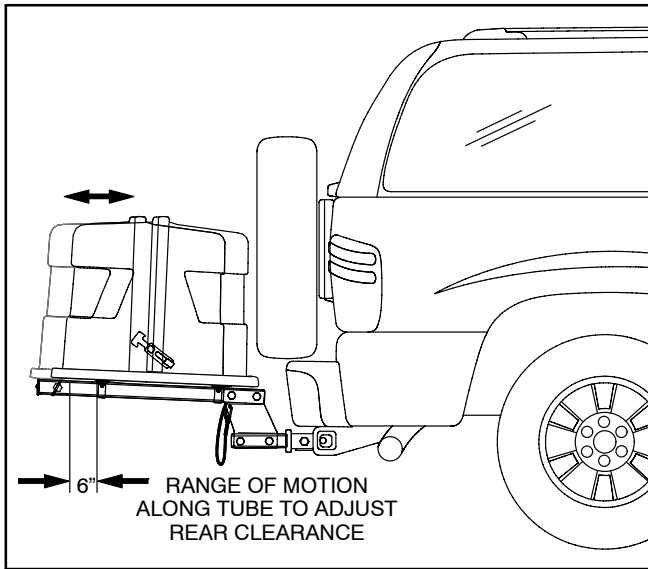
- Adjust the height of the telescoping legs until the JuiceBox hitch assembly aligns with the vehicle hitch receiver.

**⚠ CAUTION** *Lifting the JuiceBox can result in personal injury or equipment damage. The JuiceBox weighs approximately 360 pounds. Use lifting equipment to lift and move the JuiceBox.*

- Slide the JuiceBox onto the hitch spline (see Figure 2-5).
- If desired, adjust the position of the enclosure along the telescoping tubes. The enclosure can be moved an additional six inches from your vehicle (see Figure 2-6). Before transporting the JuiceBox, always position the JuiceBox as close to the vehicle as possible.

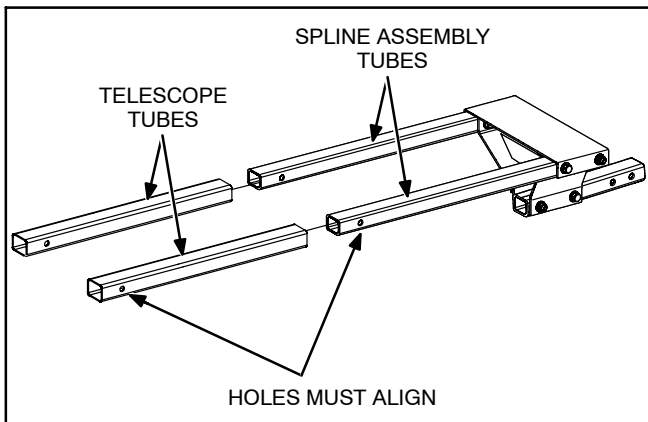


**FIGURE 2-5. INSTALLING THE JUICEBOX**



**FIGURE 2-6. ADJUSTING THE JUICEBOX POSITION**

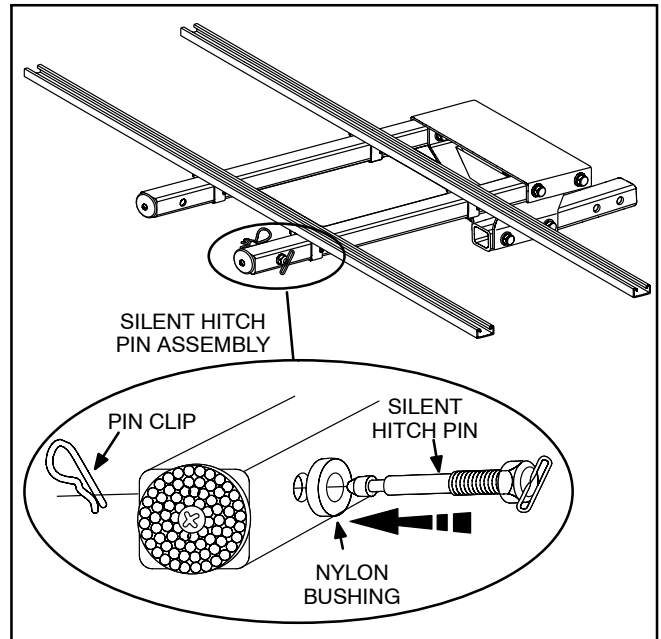
5. Make sure the holes of the spine tubes line up with the mating telescope safety pin hole of the telescope tubes (see Figure 2-7).



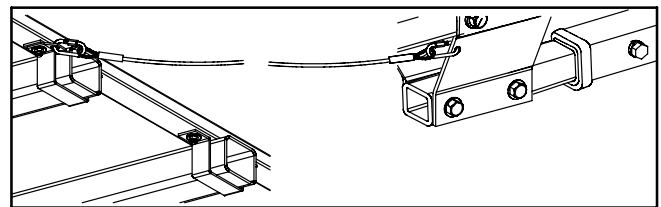
**FIGURE 2-7. TUBE ALIGNMENT**

**⚠️WARNING** *Separation of the JuiceBox from the hitch spline while transporting it can result in severe personal injury or death and equipment damage. The hand-tighten Silent Hitch Pin must be firmly secured in the telescope safety pin hole before transit.*

6. Secure the frame assembly to the spline assembly using the Silent Hitch Pin™ assembly (hitch pin, nylon bushing, and pin clip – see Figure 2-8). Thread the Hand Tighten Silent Hitch Pin™ into the spring nut and install the pin clip.
7. Attach the safety cable from the V-plate to the cable retainer (see Figure 2-9).



**FIGURE 2-8. SECURING THE JUICEBOX**



**FIGURE 2-9. INSTALLING THE SAFETY CABLE**

8. Retract, fold, and secure the telescoping legs.

**⚠️WARNING** *Fuel presents the hazard of fire or explosion that can result in severe personal injury or death. Do not store or transport fuel inside a vehicle, inside the Juice-Box, or behind a vehicle/RV bumper.*

9. Make sure all loose items (fuel tank, etc.) are secured in a safe location, in compliance with DOT requirements.

## REMOVING THE JUICEBOX AND HITCH SPLINE FROM THE VEHICLE/TRAILER

Landing Gear legs with swivel casters are designed to provide temporary support during transfer of the JuiceBox assembly from an RV to another vehicle or when storing the JuiceBox. Use of the landing gear should be on a hard, level surface such as a driveway. Four swivel casters enable good maneuverability for transfer through narrow passageways and orientation for hitch alignment. Be sure to move the unit slowly with particular attention to wheel position.

**⚠ CAUTION** *Moving the JuiceBox improperly when the telescoping legs are extended and it is detached from the vehicle can result in equipment damage and/or personal injury. To avoid tipping the unit, make sure the wheels are turning in the intended direction before pushing or pulling the unit. Do not push or pull the JuiceBox in a direction at right angles to the wheel alignment. Make gradual turns. Do not attempt to roll the JuiceBox over loose gravel, sand, debris, or turf. Once in the desired location, chock the wheels to prevent accidental movement.*

A video that demonstrates the recommended Landing Gear procedure is available on [www.onan.com/onan/rvgenerators/juiceboxdemo.jsp](http://www.onan.com/onan/rvgenerators/juiceboxdemo.jsp).

The JuiceBox can be left on the vehicle or trailer for usage. The following steps are necessary only if you wish to move the JuiceBox to another location.

1. Park your vehicle close to where you wish to operate the JuiceBox.
2. Extend and unfold the telescoping legs. Lock them into position. Insert one or both of the provided leg handle(s) and use it/them to lower the legs to ground level to take the weight off of the hitch.



**FIGURE 2-10. LEG ADJUSTMENT**

3. Disconnect the safety cable from the cable retainer (see Figure 2-9).
4. Remove the Silent Hitch Pin assembly securing the frame assembly to the spline assembly (see Figure 2-8).

**⚠ CAUTION** *Lifting the JuiceBox can result in personal injury or equipment damage. The JuiceBox weighs approximately 360 pounds (162 kg). Use lifting equipment to lift and move the JuiceBox.*

**⚠ WARNING** *Severe personal injury or death can result from breathing carbon monoxide. Make sure the JuiceBox is not placed near any vehicle, building, or any confined space.*

5. Slide the JuiceBox off of the hitch spline and position it on a flat dry surface.
6. Remove the pin clip from the end of the Silent Hitch Pin securing the hitch spline to the receiver hitch.
7. Remove the Silent Hitch Pin and washer.
8. Remove the hitch spline assembly.

## **JUICEBOX SETUP**

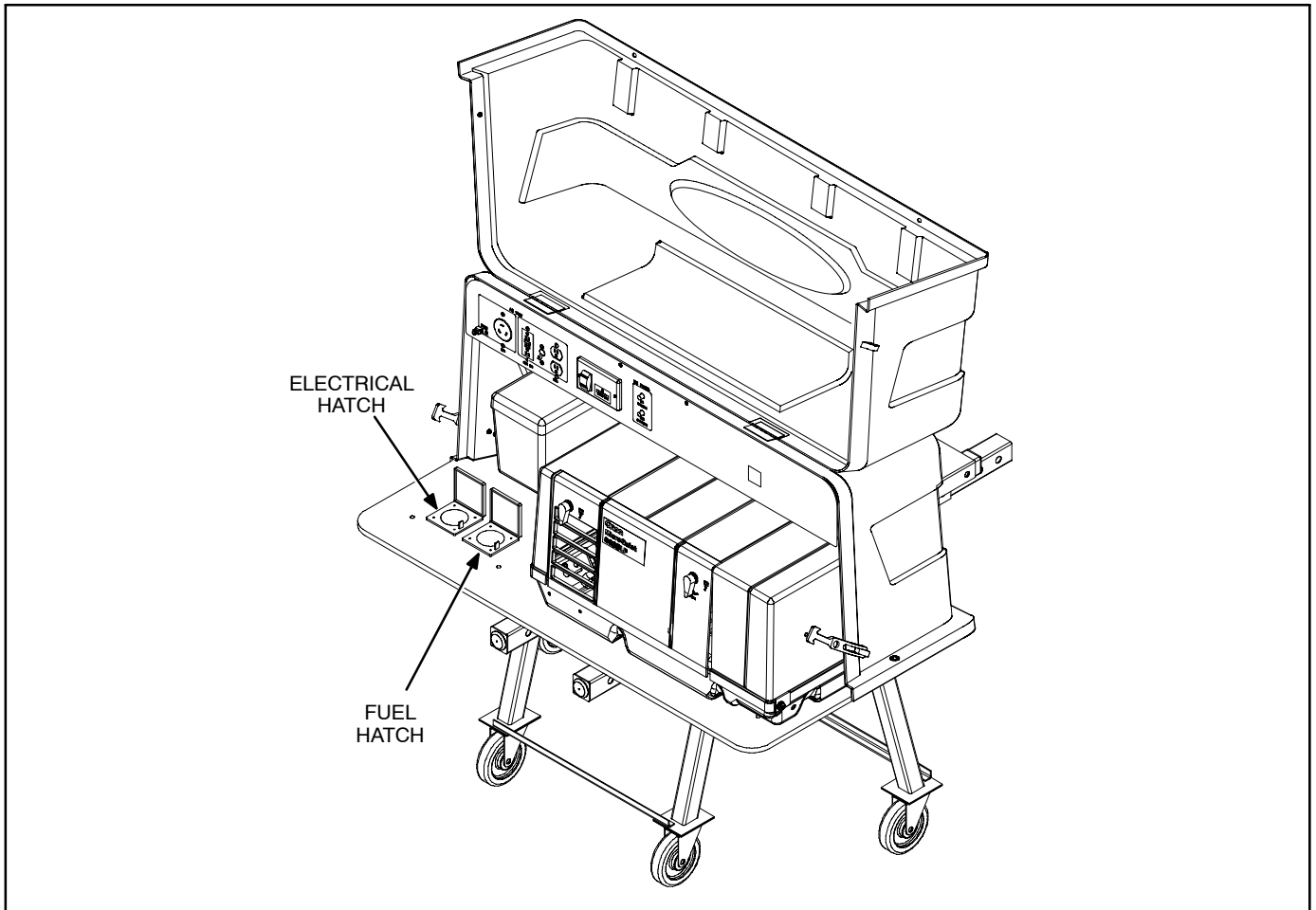
**⚠ WARNING** *Severe personal injury or death can result from breathing carbon monoxide. Exhaust heat can ignite fuel, resulting in severe personal injury or death and equipment damage.*

Before The JuiceBox can be used, some items must be assembled. Depending on your fuel system, follow the steps listed on the following page. When you are ready to transport the JuiceBox, these items must be disconnected and safely stored away.

**⚠ WARNING** *The JuiceBox is designed to be transported from one location to another. It is not intended for home use or continuous use at one location. Do not make any permanent fuel connections. Do not make any permanent electrical (AC/DC) connections between the vehicle and the JuiceBox.*

## **Gasoline Fuel System**

1. Open the JuiceBox cover.
2. Install an Earth-grounding rod and wire in accordance to national and local codes. Connect a 12 gauge wire from the ground terminal on the control panel, through the electrical hatch (see Figure 2-11), to a rod that is driven into the ground.



**FIGURE 2-11. ELECTRICAL AND FUEL HATCHES**

3. If not already installed, install a Group 26 with 525 CCA battery in the battery box. Connect the genset battery cables to the battery, cover the box, and use the strap to secure the battery box.

**⚠ CAUTION** *Make sure the battery is secured to the deck inside the Juice Box. Failure to securely strap the battery can result in damage to several internal components and the clamshell enclosure.*

**NOTE:** The battery is not supplied with the JuiceBox.

4. Run the gas line through the fuel hatch in the enclosure base (see Figure 2-11).
5. Connect the fuel line to the gas container using the quick connect (see Figure 2-12).



**FIGURE 2-12. FUEL CONNECTION**



**⚠️WARNING** *Fuel presents the hazard of fire or explosion that can result in severe personal injury or death. Make sure the fuel tank is placed as far away from the JuiceBox as the fuel hose will allow. Do not place the fuel tank under the JuiceBox enclosure where exhaust heat can ignite the fuel!*

6. Place the fuel tank to the left of the fuel hatch.
7. Open the vent on the fuel tank.
8. Run the electrical cable(s) from the RV or appliances through the electrical hatch and plug them into the appropriate outlets (see Figure 2-13).
9. The generator can be started or stopped manually or with the EC-15W remote control.
10. Close the JuiceBox cover when the generator is running.



**FIGURE 2-13. ELECTRICAL CONNECTION**

## Propane Fuel System

1. Open the JuiceBox cover.
2. Install an Earth-grounding rod and wire in accordance to national and local codes. Connect a 12 gauge wire from the ground terminal on the control panel, through the electrical hatch (see Figure 2-11), to a rod that is driven into the ground.
3. If not already installed, install a Group 26 with 525 CCA battery. Connect the genset battery

cables to the battery, cover the box, and use the strap to secure the battery box.

**⚠️CAUTION** *Make sure the battery is secured to the deck inside the Juice Box. Failure to securely strap the battery can result in damage to several internal components and the clamshell enclosure.*

**NOTE:** The battery is not supplied with the JuiceBox.

4. Run the propane line through the fuel hatch in the enclosure base (see Figure 2-11).

**⚠️CAUTION** *Liquid propane tanks can tip over easily, resulting in personal injury and equipment damage. Make sure the LP tank is secured from tipping over when in use.*

5. Set the propane cylinder holder on a flat surface and secure the customer-supplied propane tank in the propane cylinder holder.
6. Connect the propane regulator to the tank.

**⚠️WARNING** *Fuel presents the hazard of fire or explosion that can result in severe personal injury or death. If any leaks are detected, have them corrected immediately. Do not start the generator set until fuel and fumes are purged from the area.*

7. Connect the propane hose to the tank using the quick connect.
8. Open the propane valve.
9. Check for any fuel leaks and, if needed, correct them.

**NOTE:** Propane tanks have an automatic shut-off when tipped on the side.

10. Run the electrical cable(s) from the RV or appliances through the electrical hatch and plug them into the appropriate outlets.
11. The generator can be started or stopped manually or with the EC-15W remote control.
12. Close the JuiceBox cover when the generator is running.

**NOTE:** When propane is not being used, turn off the valve on the LPG tank.

## PREPARING THE JUICEBOX FOR TRANSPORTATION (PACK-UP)

### Gasoline Fuel System

1. Open the JuiceBox cover.
2. Turn the generator off, either manually or with the EC-15W remote control.
3. Disconnect all power cords/cables from the outlets and pull them out through the electrical hatch.
4. Close the vent on the fuel tank.
5. Disconnect the fuel line from the gas container. Pull the fuel line up through the fuel hatch and store it inside the JuiceBox.
6. Uninstall the Earth-grounding rod and wire.
7. Close both hatches.

**⚠WARNING** *Storing loose items inside of the JuiceBox can result in serious personal injury or death and equipment damage. Do not store fuel, rags, or any other loose items inside the JuiceBox.*

8. Remove all loose items from inside of the JuiceBox.
9. Close and use both latches to secure the JuiceBox cover.
10. If the JuiceBox was removed from the vehicle or trailer,
  - a. Install the hitch spline on the vehicle or trailer as described on page 2-1.
  - b. Move the JuiceBox as close to the vehicle hitch receiver as possible and follow the JuiceBox installation procedure on page 2-2.

### Propane Fuel System

1. Open the JuiceBox cover.
2. Turn the generator off, either manually or with the EC-15W remote control.
3. Disconnect all power cords/cables from the outlets and pull them out through the electrical hatch.
4. Close the propane valve on the LPG tank.
5. Disconnect the hose from the propane tank.
6. Disconnect the propane regulator from the tank.
7. Cover the hose ends to keep out dirt.
8. Pull the hose up through the fuel hatch and store it inside the JuiceBox.
9. Uninstall the Earth-grounding rod and wire.
10. Close both hatches.

**⚠WARNING** *Storing loose items inside of the JuiceBox can result in serious personal injury or death and equipment damage. Do not store fuel, rags, or any other loose items inside the JuiceBox.*

11. Remove all loose items from inside of the JuiceBox.
12. Close and use both latches to secure the JuiceBox cover.
13. If the JuiceBox was removed from the vehicle or trailer,
  - a. Install the hitch spline on the vehicle or trailer as described on page 2-1.
  - b. Move the JuiceBox as close to the vehicle hitch receiver as possible and follow the JuiceBox installation procedure on page 2-2.



## OPERATION

**⚠ WARNING** *Engine exhaust is deadly! Severe personal injury or death can result from breathing carbon monoxide. Make sure your recreational vehicle/trailer is equipped with a functioning CO detector.*

**⚠ CAUTION** *Generator set exhaust, contact with electricity, and contact with hot components can cause personal injury and equipment damage. Do not allow children to play under or near the JuiceBox.*

It is strongly recommended that there is a functioning CO detector within a recreational vehicle (living quarters) when using the JuiceBox.

Once the JuiceBox is set up, the trailer's shore cord can be plugged into the JuiceBox, appliances can be plugged in, and the JuiceBox can be used. Bring all wire connections up through the electrical hatch before plugging them into an outlet.

**NOTE:** Do not put any wiring through the fuel hatch.

### GenSet Control

The genset control consists of a Start/Stop/Prime switch and an hour meter (see Figure 2-14). For more information, refer to the generator set Operator's Manual.

### Remote Control

The Energy Command™ 15W (EC-15W) remote control consists of a receiver that is wired to the genset and a detached transmitter (see Figure 2-15) that is used to remotely start and stop the genset. For more information, see Instruction Sheet C690.

### Battery Charger

To use the six amp battery charger, plug it into one of the 120 volt outlets. Three LEDs on the control panel are available to indicate the charging status (see Figure 2-16). For more information, see the manufacturer's battery charger Owner's Manual.

- **Full Charge** – This LED is lit when the battery is fully charged. Unplug the battery charger.
- **Check Connection** – This LED lights if there are any problems with charging the battery. Check for loose connections. If it will not charge, replace the battery.

- **Charging** – This LED is lit when the battery is charging.

**NOTE:** In order to maintain an appropriate charge on the battery, avoid multiple short-run durations with the generator. Let the generator run for a minimum of 10 to 15 minutes at a time to allow the starting battery to recharge. Follow the battery manufacturer's recommendations on maintaining the battery.

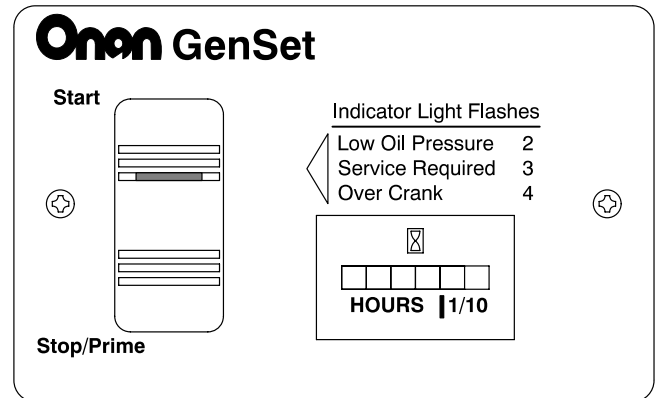


FIGURE 2-14. GENSET CONTROL

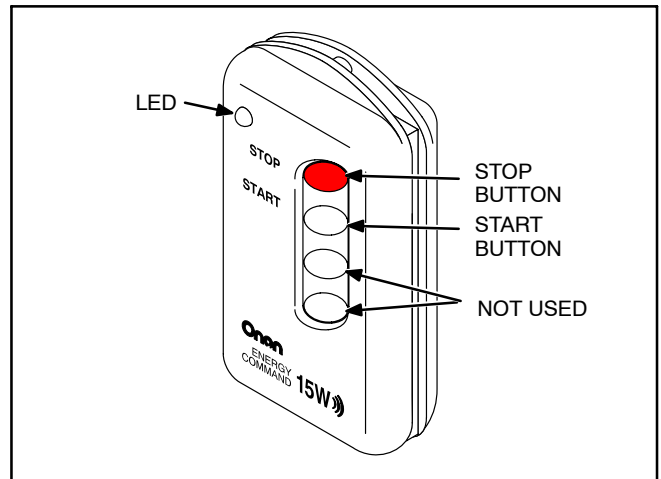


FIGURE 2-15. REMOTE CONTROL TRANSMITTER

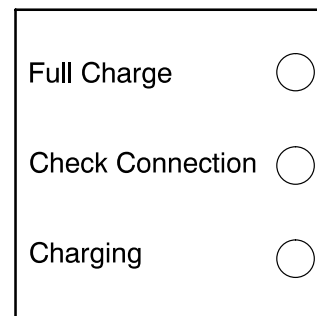
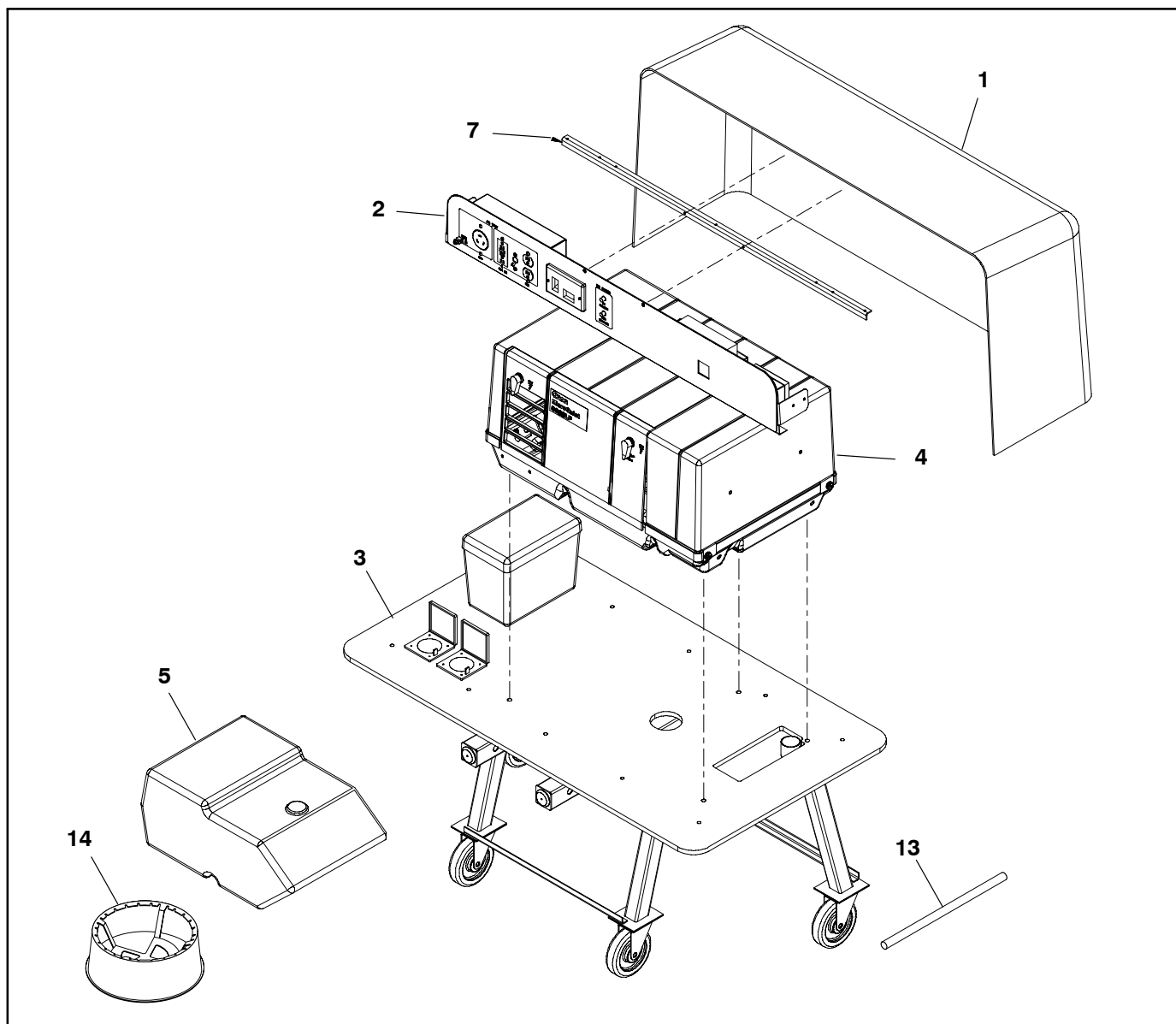


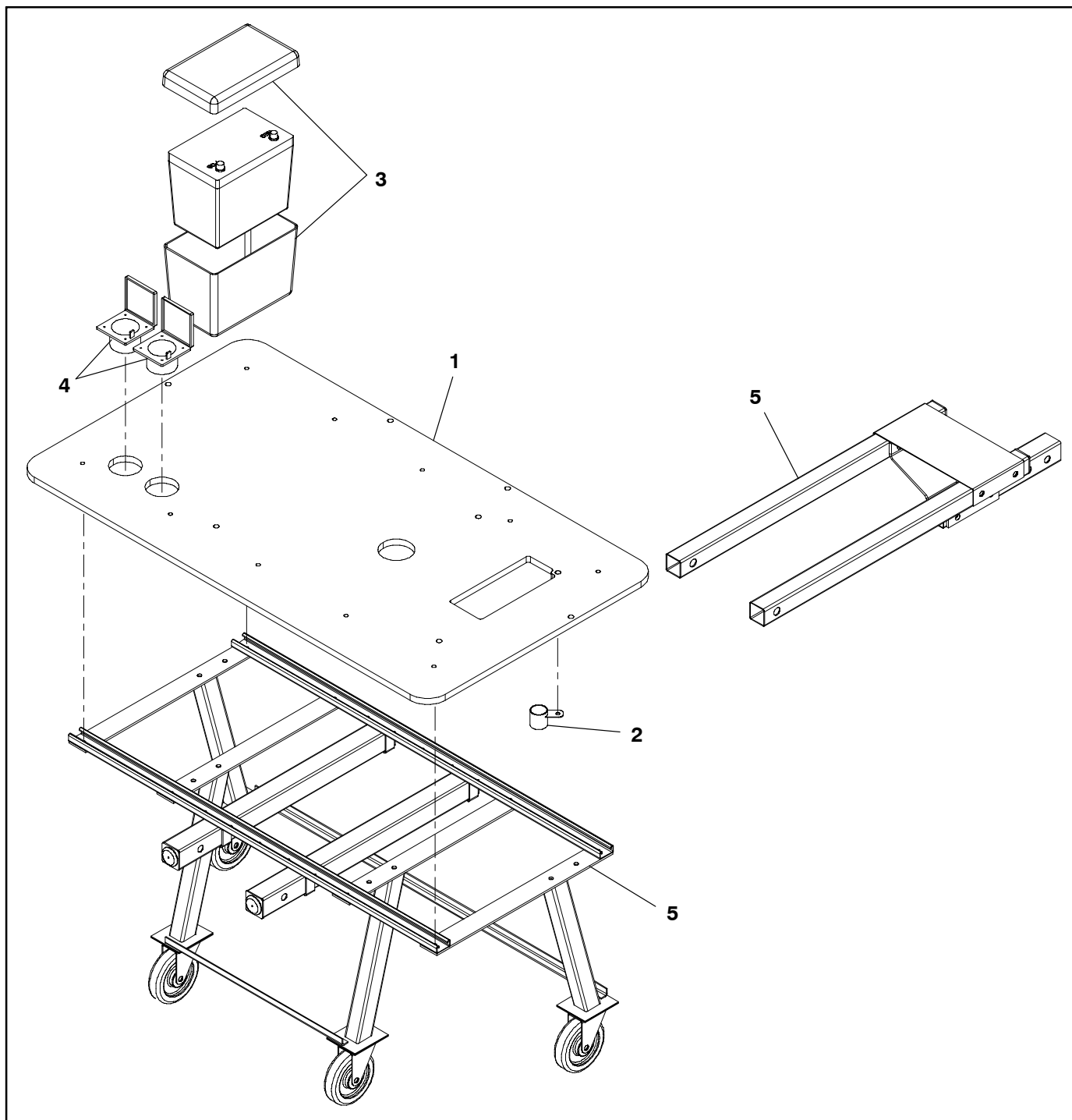
FIGURE 2-16. BATTERY CHARGER LEDS

# Section 3. Parts Information



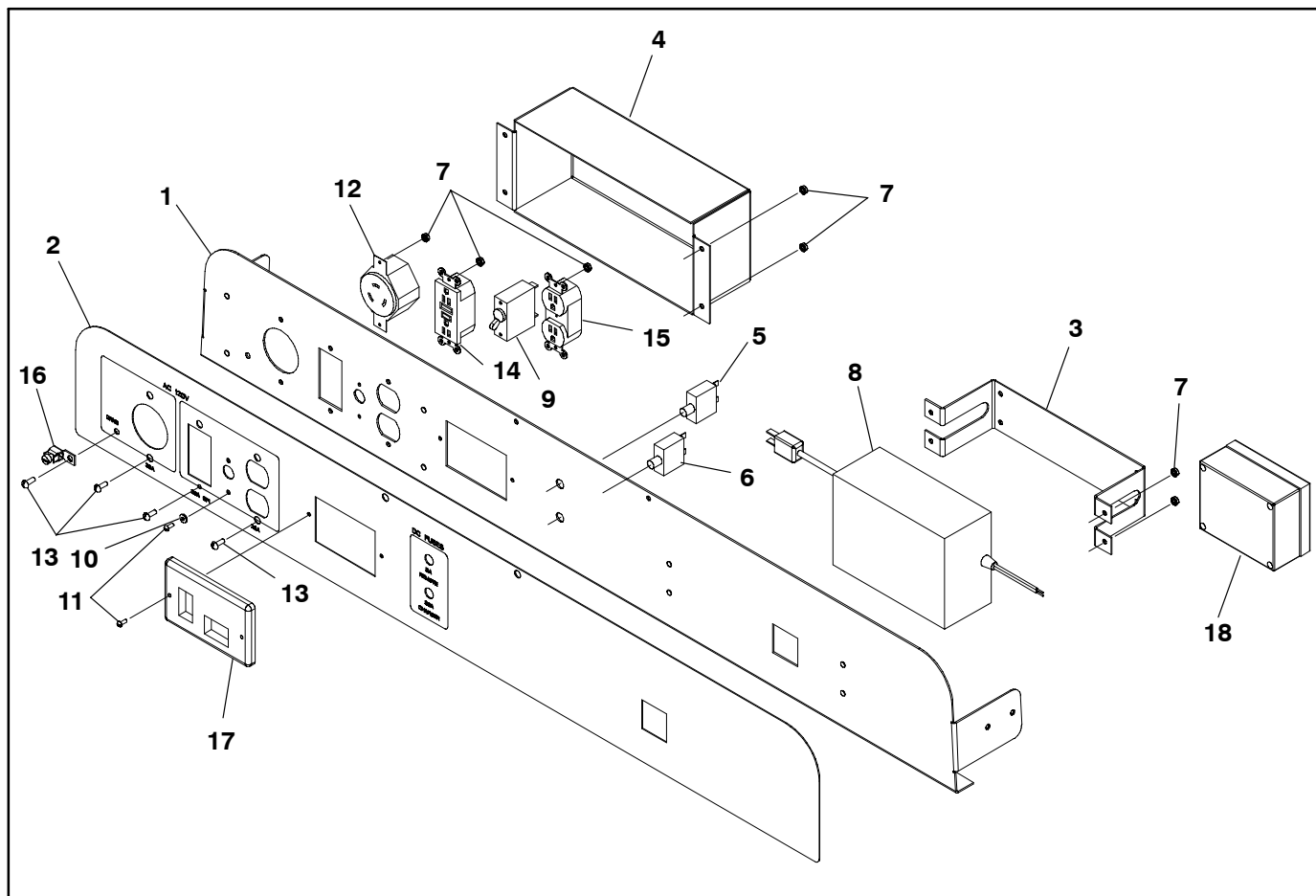
**FIGURE 5-1. JUICEBOX ENCLOSURE**

REF NO.	PART NO.	QTY USED	PART DESCRIPTION	REF NO.	PART NO.	QTY USED	PART DESCRIPTION
1	019-01010	1	Enclosure	6	019-01017	1	LPG Fuel System
2	019-01016	1	Control Panel (See Figure 5-3)	7	019-00118	1	Channel, Mounting
3		1	Mounting System (See Figure 5-2)	8	019-00105	2	Hinge
	019-01014	1	Short Leg Version	9	019-00119	1	Seal, Rubber
	019-01015	1	Long Leg Version	10	019-00107	2	Latch
4			Genset	11	050-00032	2	Fitting, Kwik Connect – Fuel (1/4 Inch)
	002-00023	1	4KYFA26100 – Gasoline	12	038-00152	1	Hose, Gasoline Fuel (54 Inch)
	002-00011	1	3.6KYFA26120 – LP	13	019-00122	2	Leg Adjustment Handle
5	019-01019	1	Fuel Tank	14	019-00145	1	Holder, Propane Cylinder



**FIGURE 5-2. MOUNTING SYSTEM**

REF NO.	PART NO.	QTY USED	PART DESCRIPTION	REF NO.	PART NO.	QTY USED	PART DESCRIPTION
1	019-01011	1	Base, Enclosure (Deck)	5			Hitch Spline and Landing Gear Assembly
2	019-01018	1	Shield, Heat (Exhaust)				
3	019-00137	1	Box, Battery		019-01015	1	With Standard Legs
4	019-00111	2	Hatch, Cable		019-01014	1	With Short Legs



**FIGURE 5-3. CONTROL PANEL**

REF NO.	PART NO.	QTY USED	PART DESCRIPTION	REF NO.	PART NO.	QTY USED	PART DESCRIPTION
1	019-00103	1	Panel, Display	12	019-00147	1	Outlet, Shore Power
2	019-00112	1	Label, Control Panel	13	019-00155	6	Screw, Machine -Slotted Round Head (10-32 x 1/2")
3	019-00102	1	Bracket, Battery Charger	14	019-00160	1	Outlet, Duplex (20 Amp GFI)
4	019-00101	1	Guard, Electrical	15	019-00161	1	Outlet, Duplex
5	019-00109	1	Circuit Breaker, 5 Amp	16	332-1572	1	Terminal, Solderless (Ground)
6	019-00110	1	Circuit Breaker, 30 Amp	17	028-00020	1	Panel, Control
7	019-00150	10	Nut, SEMS w/ ET (#10-32)	18	019-00169	1	Kit, Remote Control (EC-15W)
8	019-00136	1	Charger, Battery	19	044-00003	1	Harness, Remote
9	320-1321	1	Breaker, Circuit - 20 Amp				
10	019-00156	2	Washer, Flat				
11	019-00153	4	Screw, Machine - Round Head (6-32 x 3/8")				

THIS PAGE INTENTIONALLY BLANK



Cummins Power Generation  
1400 73rd Avenue N.E.  
Minneapolis, MN 55432  
763-574-5000  
Fax: 763-528-7229

Cummins and Onan are registered trademarks of Cummins Inc.