

The following catalog  
has gaps in its page  
numbers, or doesn't  
have any numbers.  
We have chosen to  
leave the page  
numbering in the  
order that Acrobat  
assigns it.

**McGraw-Hill**

**Onan**

# **Service Parts Manual**

**RCCK  
Engine**

**927-0252**  
**10-82 (SPEC A)**  
REPLACES  
9-79 (SPEC A)  
Printed in U.S.A.

# GENERAL INFORMATION

## INSTRUCTIONS FOR ORDERING REPAIR PARTS

For parts or service, contact the dealer from whom you purchased this equipment or refer to your Nearest Authorized Onan Parts and Service Center.

To avoid errors or delay in filling your parts order, please furnish all information requested.

Always refer to the nameplate on your unit.

1. Always give the MODEL, SPEC NO. and SERIAL NO.

The diagram shows a rectangular nameplate with rounded corners. At the top center, the text "McGRAW-EDISON" is printed in a bold, sans-serif font. Below this, the "Onan" logo is prominently displayed in a stylized, bold font. Underneath the logo is a large, empty rectangular box. Below this box, the text "MODEL AND SPEC NO." is printed. Further down is another empty rectangular box. To the left of this box, the text "SERIAL NO." is printed. The entire nameplate is enclosed in a double-line border. There are two small circles at the top corners, likely representing mounting holes. A small reference number "M-1148" is located at the bottom right of the nameplate.

For handy reference, insert "YOUR" nameplate information in the spaces above.

2. Do not order by reference number; always use part number and description.
3. Give the part number, description and quantity needed of each item. If an older part cannot be identified, return the part prepaid to your dealer or nearest Onan Parts and Service Center. Print your name and address plainly on the package. Write a letter to the same address stating the reason for returning the part.
4. State definite shipping instructions. Any claim for loss or damage to your unit in transit should be filed promptly against the transportation company making the delivery. Shipments are complete unless the packing list indicates items are back ordered.

Prices are purposely omitted from this Parts Manual due to the confusion resulting from fluctuating costs, import duties, sales taxes, exchange rates, etc.

For current parts prices, consult your Onan Dealer, Distributor or Parts and Service Center.

"En esta lista de partes los precios se omiten de proposito, ya que bastante confusion resulto de fluctuaciones de los precios, derechos aduanales, impuestos de venta, cambios extrajeros, etc."

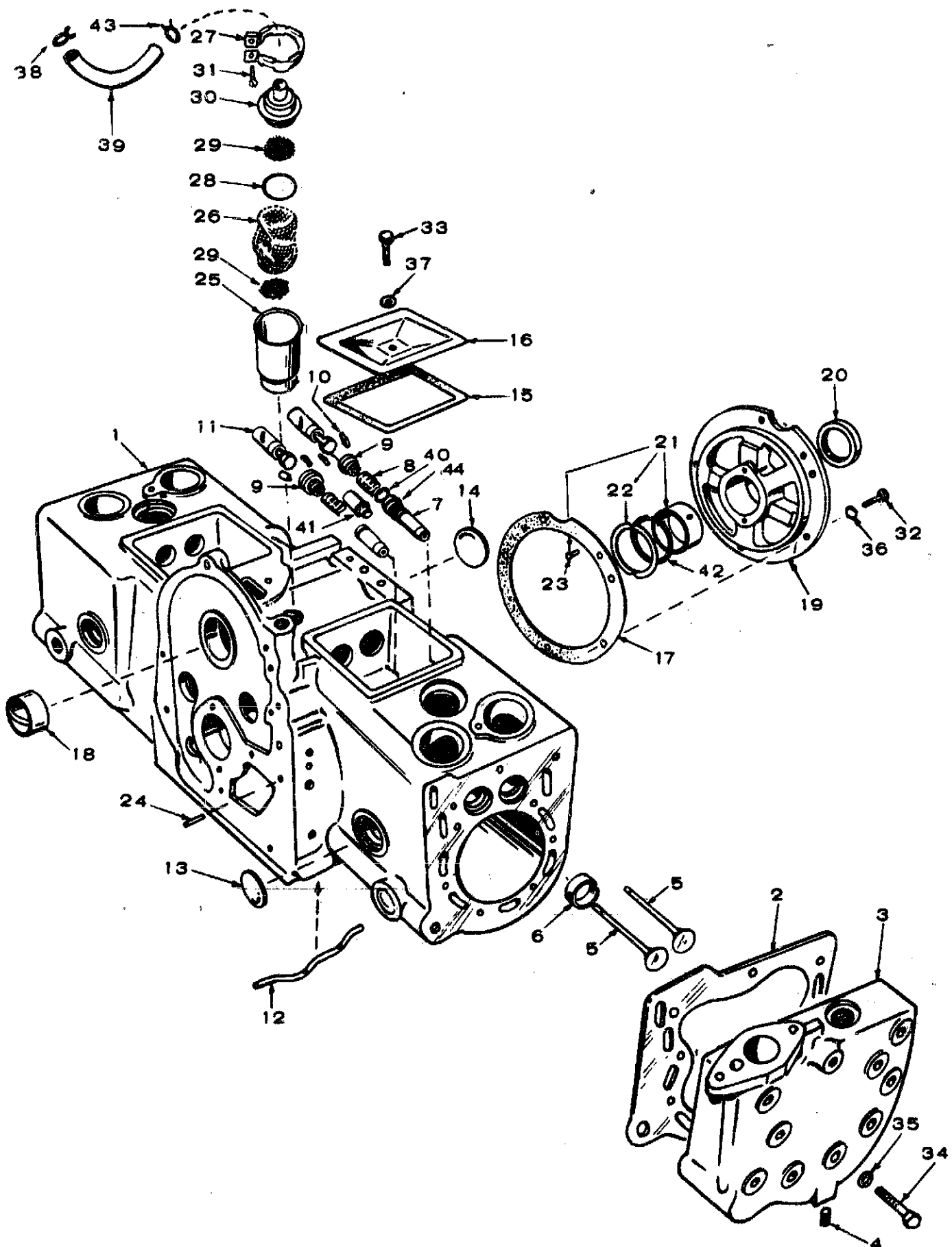
Consiga los precios vigentes de su distribuidor de productos "ONAN."

# INDEX

TITLE	PAGE
INTRODUCTION .....	A2
STANDARD PARTS SECTION.....	
Block, Cylinder .....	A4,A5
Camshaft .....	A6
Carburetor Parts .....	A11
Cooling System .....	B1
Crankshaft and Flywheel .....	A6
Fuel Pump, Parts (Mechanical) .....	A10
Fuel System .....	A9
Gearcase .....	A7
Governor .....	A10
Ignition System .....	A12,A13
Oil System .....	A8
Piston and Rod .....	A7
Service Kits and Miscellaneous .....	B2
Starter .....	A14
Starter Parts .....	A14

OPTIONAL EQUIPMENT SECTION.....		OPTION NUMBER
Air Cleaner .....	C5	5
Air Cleaner (Remote) .....	C5	6
Alternator, Flywheel - 15 Ampere (Phelon) .....	C4	3
Alternator, Flywheel - 20 Ampere (Syncro) .....	C3	2
Box, Breaker (High Profile) .....	C2	1
Choke Adapter, Front Pull .....	C6	8
Clutch .....	C4	4
Control, Governor - Variable Speed (Side Pull) .....	C6	7
Miscellaneous Optional Parts .....	C9	
Pump Parts, Fuel - Electric (149-0650) .....	C8	10
Pump Parts, Water (132-0110) .....	C8	11
Water Pump, Mounted .....	C7	9

# CYLINDER BLOCK

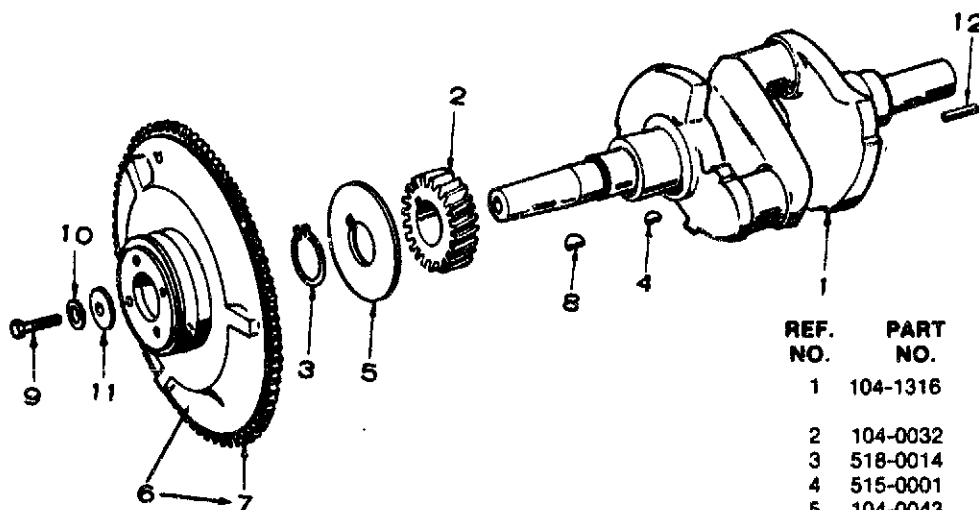


## CYLINDER BLOCK

REF. NO.	PART NO.	QTY. USED	PART DESCRIPTION	REF. NO.	PART NO.	QTY. USED	PART DESCRIPTION
1	110-2415	1	Block Assembly, Cylinder (Includes Parts Marked *)	22	104-0575	2	*Washer, Thrust - Bearing
2	110-2750	2	Gasket, Cylinder Head	23	516-0072	2	*Pin, Dowel - Bearing Stop
3	HEAD, CYLINDER			24	516-0141	2	*Pin, Dowel - Gear Cover Alignment
	110-2347	1	Right Hand	25	123-0953	1	Tube, Breather
	110-2348	1	Left Hand	26	123-0965	1	Filter, Breather Tube
4	502-0153	2	Plug, Pipe (Hex Head ) 1/4"	27	123-0951	1	Clamp, Breather Cap
5	VALVES			28	509-0117	1	Gasket, Breather Cap
	110-0880	2	Exhaust	29	123-0958	1	Screen, Breather Cap
	110-0881	2	Intake	30	123-0954	1	Cap, Breather
6	*INSERT, VALVE SEAT - EXHAUST			31	800-0035	1	Screw, Tapping - Round Head - Breather Cap Clamp Mounting (#8 x 3/4")
	110-0872	2	Standard				
	110-0872-02	2	.002" Oversize	32	800-0512	5	*Screw, Cap - Hex Head - Rear Bearing Plate Mounting (5/16-18 x 1")
	110-0872-05	2	.005" Oversize				
	110-0872-10	2	.010" Oversize	33	800-0012	2	Screw, Cap - Hex Head - Valve Cover Mounting (1/4-20 x 2-1/4")
	110-0872-25	2	.085" Oversize				
7	110-0902	4	*Guide, Valve (Used When No Seals on Valves)	34	800-0509	18	Screw, Cap - Hex Head - Cylinder Head Mounting (5/16-18 x 2-1/2")
8	110-0539	4	Spring, Valve				
9	110-0904	4	Rotocap, Valve Spring	35	526-0122	18	Washer, Flat - Cylinder Head Mounting (11/32" ID x 23/32" OD x .134" Thk)
10	110-0639	8	Lock, Valve Stem	36	850-0045	5	*Washer, Lock - Spring - Rear Bearing Plate Mounting (5/16")
11	TAPPET, VALVE			37	526-0063	2	Washer, Flat - Copper - Valve Cover Mounting (17/64" ID x 7/16" OD x 1/32" Thk)
	115-0006	4	Standard				
	115-0006-05	4	.005" Oversize	38	503-0170	1	Clamp, Breather Hose (5/8")
12	120-0386	1	*Tube, Oil	39	503-0546	1	Hose, Breather
13	517-0011	8	*Plug, Expansion (1-1/4")	40	110-3136	2	*Gasket, Intake Valve Guide
14	517-0048	1	*Plug, Expansion (1-5/8")	41	110-1827	4	Guide, Valve (Used When Valves Have Seals)
15	110-0667	2	Gasket, Valve Cover	42	104-0776	1	Shim, Crankshaft Thrust Bearing (.005)
16	110-0666	2	Cover, Valve	43	503-0171	1	Clamp, Hose (11/16")
17	101-0115	1	*Gasket Kit, Rear Bearing Plate	44	509-0090	2	Seal, Oil - Intake Valve (Includes Retainer Rings)
18	BEARING, CAMSHAFT						
	101-0367	2	*Use W/Standard Camshaft				
	101-0405	1	Use W/Hi-Lift Camshaft				
19	101-0316	1	*Plate, Rear Bearing (Less Bearings)				
20	509-0041	1	Seal, Oil - Rear Bearing Plate (NOTE: Also available in Kit #168-0132)				
21	*BEARING, CRANKSHAFT (Includes Thrust Washer)						
	101-0450	2	Standard				
	101-0450-02	2	.002" Undersize				
	101-0450-10	2	.010" Undersize				
	101-0450-20	2	.020" Undersize				
	101-0450-30	2	.030" Undersize				

\* - Parts Included in Cylinder Block Assembly.

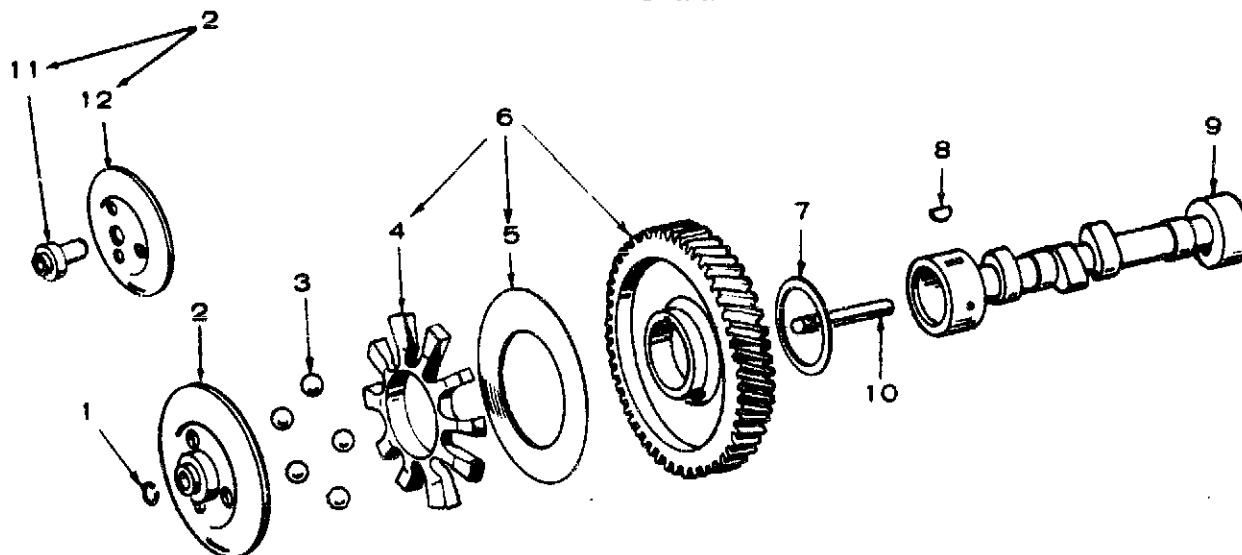
## CRANKSHAFT



REF. NO.	PART NO.	QTY. USED	PART DESCRIPTION
1	104-1316	1	Crankshaft (Includes Parts Marked*)
2	104-0032	1	Gear, Crankshaft
3	518-0014	1	Ring, Retaining
4	515-0001	1	*Key, Woodruff
5	104-0043	1	Washer, Flat - Keyed (Special)
6	FLYWHEEL (Includes Ring Gear)		
	104-0952	1	With 4" Die-Cast Pulley
	104-0967	1	With 5-3/4" Die-Cast Pulley
7	134-0673	1	Gear, Ring
8	515-0227	1	Key, Flywheel Mounting
9	104-0170	1	Screw, Cap - Hex Head - Flywheel Mounting (Special)
10	850-0055	1	Washer, Lock - Spring - Flywheel Mounting (7/16")
11	526-0017	1	Washer, Flat - Flywheel Mounting (15/32 ID x 1-1/4 OD x 1/4" Thk)
12	515-0202	1	Key, Crankshaft

\* - Parts Included in 104-1316 Crankshaft Kit.

## CAMSHAFT



REF. NO.	PART NO.	QTY. USED	PART DESCRIPTION
1	150-0078	1	Ring, Camshaft Center Pin
2	150-1695	1	Kit, Governor Cup (Includes Parts Marked*)
3	510-0015	5	Ball, Fly - Governor
4	150-1257	1	Spacer, Governor Fly Ball
5	150-0077	1	Plate, Governor Fly Ball
6	105-0332	1	Gear, Camshaft (Includes Flyball Spacer & Plate)

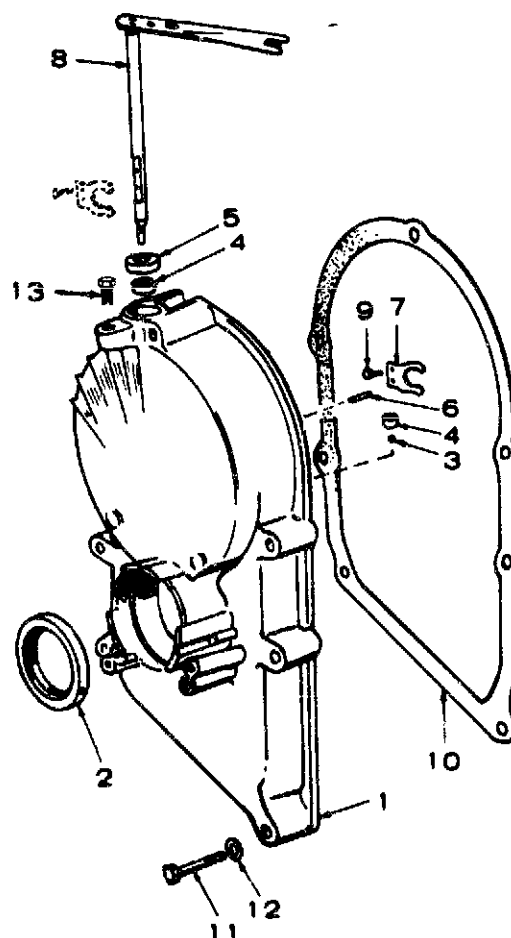
REF. NO.	PART NO.	QTY. USED	PART DESCRIPTION
7	105-0541	1	Washer, Camshaft Gear Thrust (Special)
8	515-0001	1	Key, Camshaft Gear Mounting
9	105-0238	1	Camshaft (Includes Center Pin)
10	150-0075	1	Pin, Camshaft Center
11	150-1519	1	*Hub, Governor Cup
12	150-1520	1	*Cup, Governor

\* - Parts Included in 150-1695 Governor Cup Kit.

## GEARCASE

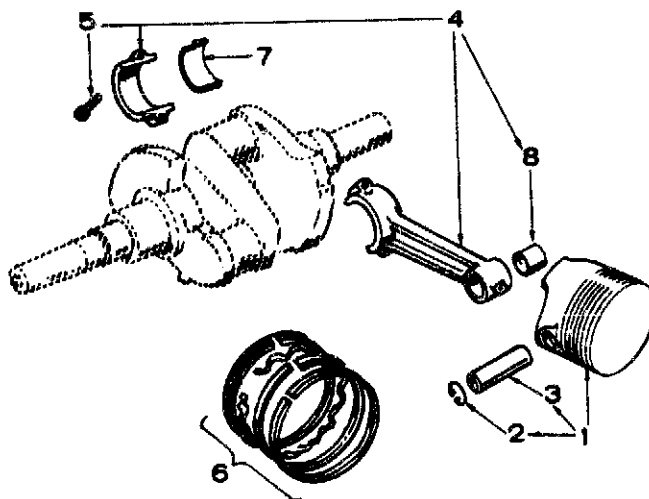
REF. NO.	PART NO.	QTY. USED	PART DESCRIPTION
1	103-0524	1	Gearcase Assembly, Complete (Includes Parts Marked *)
2	509-0040	1	*Seal, Oil
3	510-0014	1	*Bearing, Ball
4	510-0013	2	*Bearing, Needle
5	509-0008	1	*Seal, Oil
6	516-0130	1	*Pin, Roll - Governor Stop
7	150-1187	1	*Yoke, Governor
8	150-1541	1	*Arm and Shaft, Governor
9	815-0046	2	*Screw, Machine - Pan Head - Governor Yoke Mounting (#8-32 x 3/8")
10	103-0011	1	Gasket, Gearcase Mounting
11	SCREW, CAP - HEX HEAD - GEARCASE MOUNTING		
	800-0034	1	5/16-18 x 2-1/4"
	800-0032	4	5/16-18 x 1-1/2"
12	850-0045	5	Washer, Lock - Spring - Gearcase Mounting (5/16")
13	815-0261	1	Screw, Cap - Hex Head (1/4-20 x 1/2")

\* - Parts included in Gearcase Assembly.



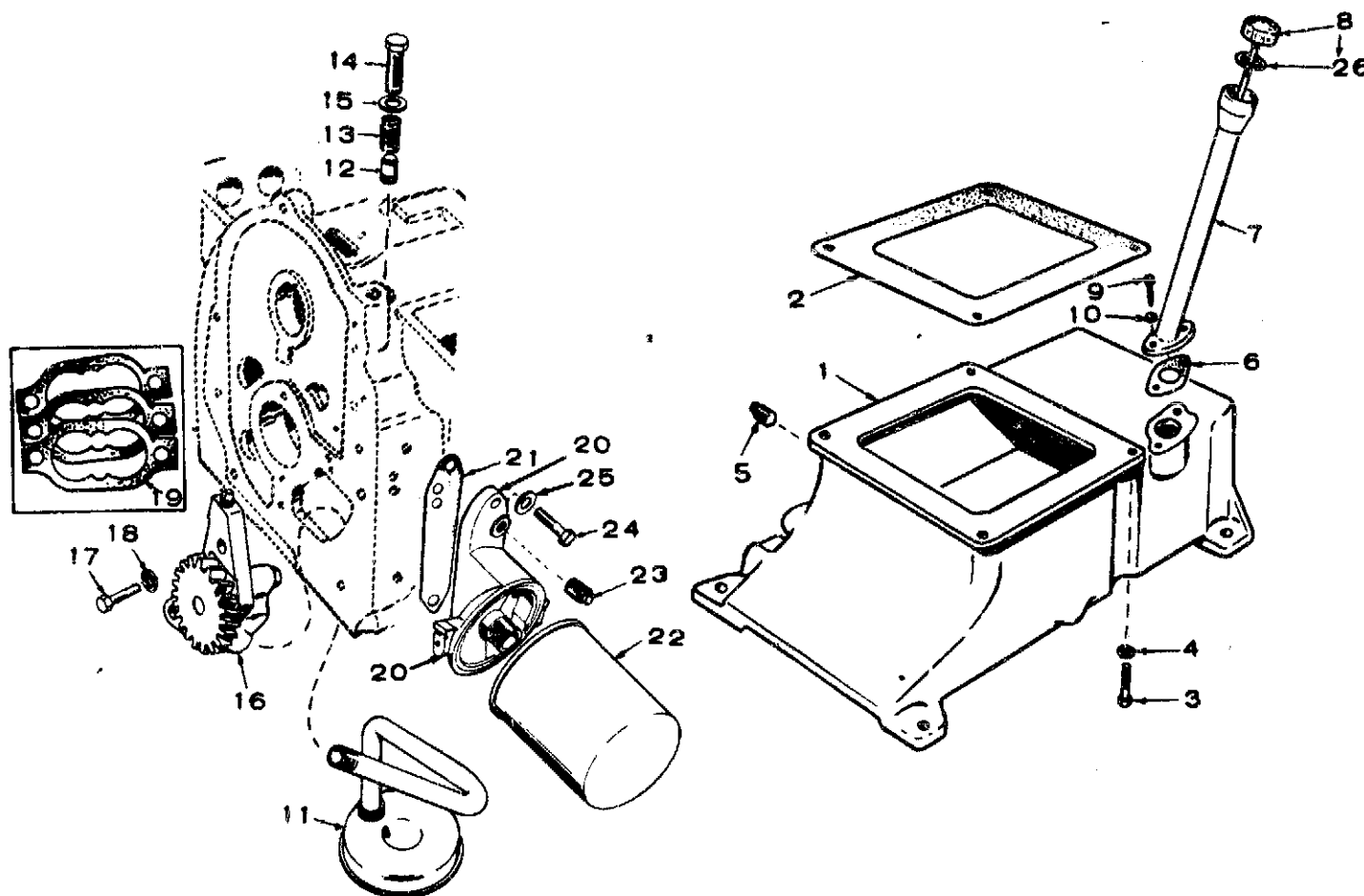
## PISTON AND ROD

REF. NO.	PART NO.	QTY. USED	PART DESCRIPTION
1	PISTON AND PIN (Includes Retaining Rings)		
	112-0179	2	Standard
	112-0179-05	2	.005" Oversize
	112-0179-10	2	.010" Oversize
	112-0179-20	2	.020" Oversize
	112-0179-30	2	.030" Oversize
	112-0179-40	2	.040" Oversize
2	112-0003	4	Ring, Retaining
3	112-0069	2	Pin, Piston
4	114-0203	2	Rod, Connecting
5	805-0010	4	Bolt, Place - Connecting Rod
6	RING SET, PISTON		
	113-0153	2	Standard
	113-0153-05	2	.005" Oversize
	113-0153-10	2	.010" Oversize
	113-0153-20	2	.020" Oversize
	113-0153-30	2	.030" Oversize
	113-0153-40	2	.040" Oversize
7	BEARING, CONNECTING ROD		
	114-0188	4	Standard
	114-0188-02	4	.002" Undersize
	114-0188-10	4	.010" Undersize
	114-0188-20	4	.020" Undersize
	114-0188-30	4	.030" Undersize
8	114-0036	2	Bushing, Piston Pin (Connecting Rod)





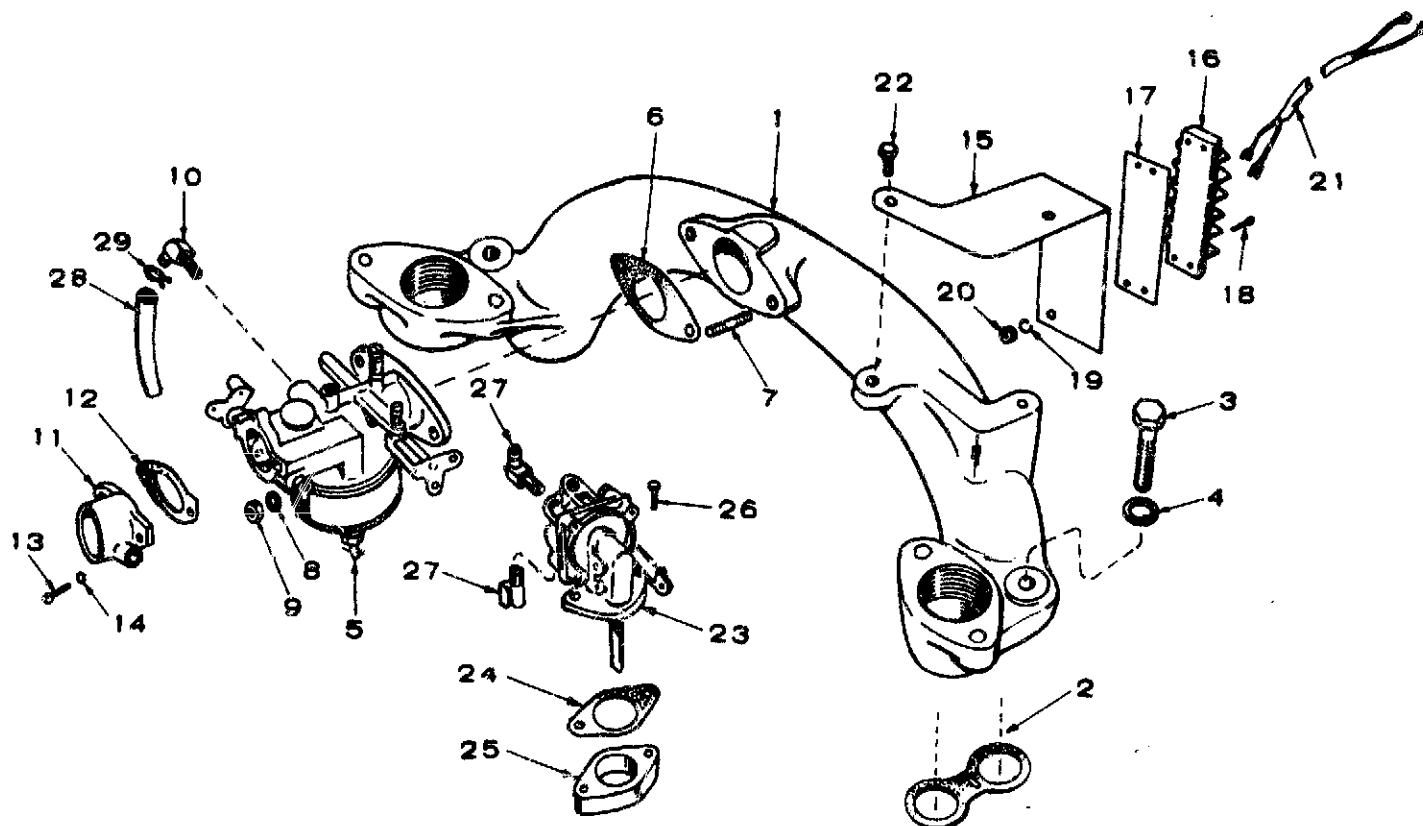
## OIL SYSTEM



REF. NO.	PART NO.	QTY. USED	PART DESCRIPTION
1	102-0881	1	Base, Oil
2	102-0158	1	Gasket, Oil Base
3	102-0455	4	Screw, Cap - Hex Head - Oil Base Mounting (Special)
4	850-0050	4	Washer, Lock - Spring - Oil Base Mounting (3/8")
5	505-0056	1	Plug, Oil Drain
6	141-0078	1	Gasket, Oil Fill Tube
7	123-0674	1	Tube, Oil Fill
8	123-0694	1	Cap and Indicator - Oil Fill
9	800-0004	2	Screw, Cap - Hex Head - Oil Fill Tube Mounting (1/4-20 x 5/8")
10	850-0040	2	Washer, Lock - Spring - Oil Fill Tube Mounting (1/4")
11	120-0848	1	Cup, Oil Pump Intake (Includes Cup, Screen & Pipe)
12	120-0398	1	Valve, Oil By-Pass
13	120-0140	1	Spring, Oil By-Pass
14	801-0048	1	Screw, Cap - Hex Head - Oil By-Pass (3/8-24 x 3/4")

REF. NO.	PART NO.	QTY. USED	PART DESCRIPTION
15	526-0066	1	Washer, Flat - Oil By-Pass (25/64" ID x 9/16" OD x 1/16" Thk)
16	120-0491	1	Pump, Oil
17	800-0007	2	Screw, Cap - Hex Head - Oil Pump Mounting (1/4-20 x 1")
18	850-0040	2	Washer, Lock - Spring - Oil Pump Mounting (1/4")
19	120-0161	1	Gasket Kit, Oil Pump
20	122-0320	1	Adapter, Oil Filter
21	122-0321	1	Gasket, Oil Filter Adapter
22	122-0323	1	Filter, Oil - Spin On
23	505-0057	1	Plug, Oil Filter Adapter
24	800-0028	2	Screw, Cap - Hex Head - Oil Filter Adapter Mounting (5/16-18 x 1")
25	526-0065	2	Washer, Flat (Copper) - Oil Filter Adapter Mounting (21/64" ID x 9/16" OD x 1/16" Thk)
26	123-0191	1	Gasket, Oil Fill Cap

## FUEL SYSTEM

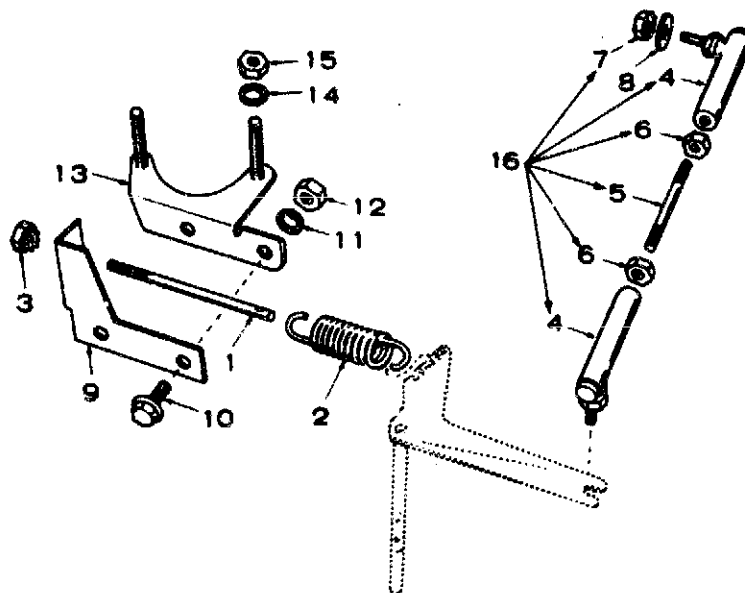


REF. NO.	PART NO.	QTY. USED	PART DESCRIPTION	REF. NO.	PART NO.	QTY. USED	PART DESCRIPTION
1	154-1800	1	Manifold, Intake	15	301-3230	1	Bracket, Terminal Block Mounting
2	154-0013	2	Gasket, Intake Manifold	16	332-0604	1	Block, Terminal
3	800-0057	2	Screw, Cap - Hex Head - Intake Manifold Mounting (3/8-16 x 2-3/4")	17	332-1273	1	Strip, Terminal Block Marker
4	850-0050	2	Washer, Lock - Spring - Intake Manifold Mounting (3/8")	18	812-0082	2	Screw, Machine - Round Head - Terminal Block Mounting (#8-32 x 3/4")
5	141-0878	1	Carburetor (Includes Mounting Gasket) (See Separate Group for Components)	19	850-0025	2	Washer, Lock - Spring - Terminal Block Mounting (#8)
6	141-0281	1	Gasket, Carburetor Mounting	20	860-0008	2	Nut, Hex - Terminal Block Mounting (#8-32)
7	520-0526	2	Stud, Carburetor Mounting (5/16-24 x 1-1/4")	21	338-0619	1	Harness, Wiring
8	354-0017	2	Washer, Lock (Internal Shakeproof) - Carburetor Mounting (5/16")	22	821-0005	2	Screw, Cap - Locking Head - Terminal Bracket Mounting (#10-32 x 1/2")
9	868-0002	2	Nut, Hex - Carburetor Mounting (5/16-24")	23	149-1784	1	Pump, Fuel (Includes Mounting Gasket) (See Separate Group for Components)
10	502-0313	1	Elbow, Hose - Fuel Inlet	24	149-0003	2	Gasket, Fuel Pump Mounting
11	140-0867	1	Adapter, Air Cleaner (Front)	25	149-0045	As Req.	Shim, Fuel Pump
12	140-0921	1	Gasket, Air Cleaner Adapter	26	806-0009	2	Screw, Cap - Counter Bore - Fuel Pump Mounting (1/4-20 x 1-1/10")
13	815-0135	2	Screw, Machine - Round Head - Air Cleaner Adapter Mounting (#10-32 x 5/8")	27	502-0313	2	Elbow (1-Inlet - 1-Outlet)
14	850-0030	2	Washer, Lock - Spring - Air Cleaner Adapter Mounting (#10)	28	503-0669	1	Hose, Fuel (1/4" ID x 3-7/16")
				29	503-0301	2	Clamp, Fuel Hose

## GOVERNOR

REF. NO.	PART NO.	QTY. USED	PART DESCRIPTION
1	150-1418	1	Stud, Governor
2	150-1214	1	Spring, Governor
3	870-0131	1	Nut, Hex - Governor Adjusting Stud (W/ET 10-32")
4	150-0839	2	*Joint, Ball
5	520-0187	1	*Stud, Governor Linkage
6	870-0053	2	*Nut, Hex (10-32")
7	870-0131	1	*Nut, Hex - Ball Joint (W/ET 10-32")
8	523-0196	1	Washer, Flat - Ball Joint to Carburetor (7/32" ID x 7/16" OD x 1/8" Thk)
9	150-1433	1	Bracket, Governor Adjusting - Fixed
10	800-0004	2	Screw, Cap - Hex Head - Governor Adjusting Bracket Mounting (1/4-20 x 5/8")
11	850-0040	2	Washer, Lock - Spring - Governor Adjusting Bracket Mounting (1/4")
12	862-0001	2	Nut, Hex - Governor Adjusting Bracket Mounting (1/4-20)
13	150-1690	1	Bracket, Governor Mounting
14	850-0045	2	Washer, Lock - Spring - Governor Bracket Mounting (5/16")
15	862-0015	2	Nut, Hex - Governor Bracket Mounting (5/16-18)
16	150-1363	1	Linkage Assembly, Governor (Includes Parts Marked *)

\* - Parts Included in 150-1363 Linkage Assembly.

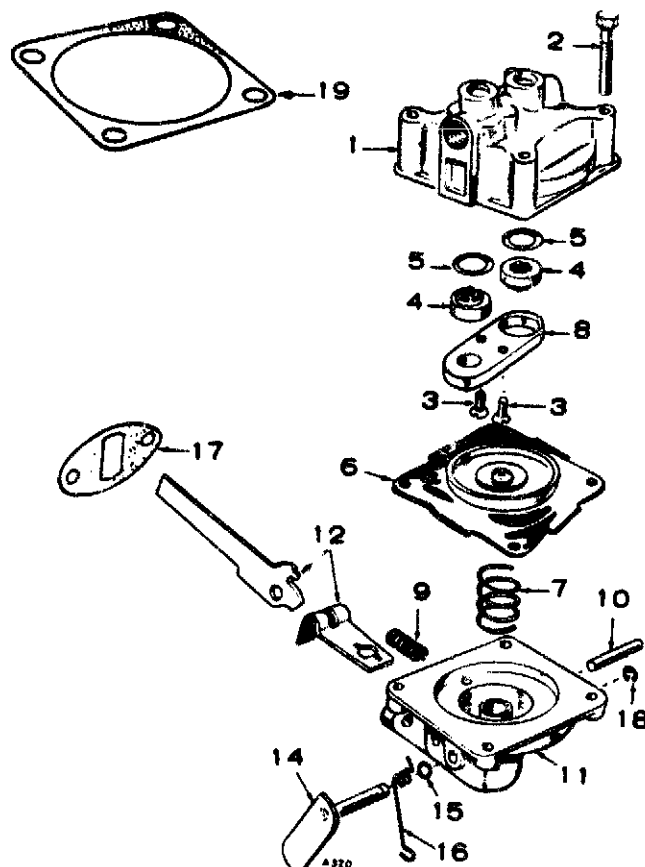


## FUEL PUMP PARTS

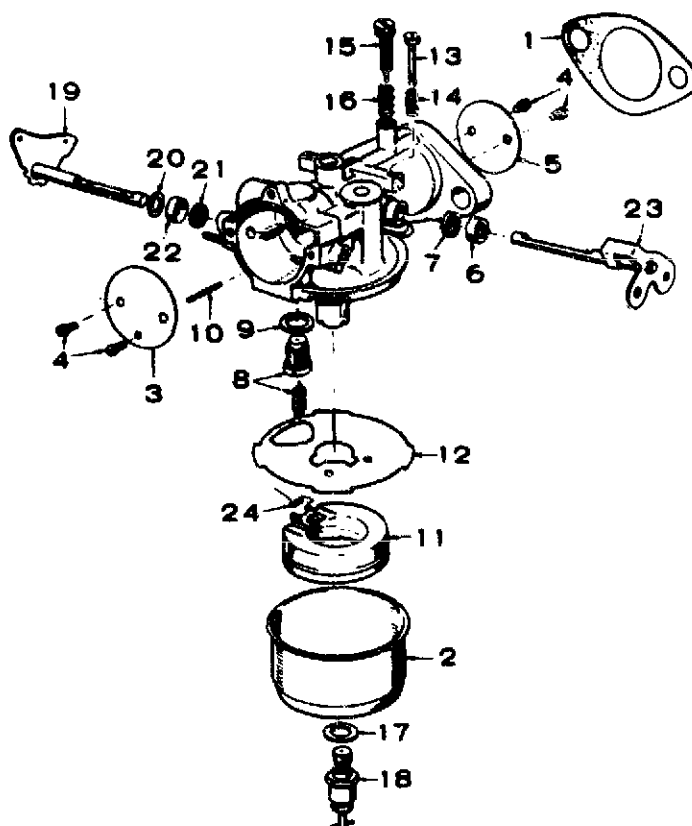
REF. NO.	PART NO.	QTY. USED	PART DESCRIPTION
	149-1784	1	Pump, Fuel
	149-0526	1	Repair Parts Kit, (Includes Parts Marked *)
1		1	Body, Not Sold Separately
2	815-0148	4	Screw, Hex Head - Slotted (8-32 x 7/8")
3	815-0147	2	Screw, Phillips, Valve Retainer (6-32 x 5/8")
4	149-0096	2	*Valve and Cage
5	149-0095	2	*Gasket, Valve
6	149-0582	1	*Diaphragm Assembly
7	149-0672	1	*Spring
8	149-0539	1	Retainer, Valve Cage
9	149-0675	1	*Spring
10	516-0113	1	Pin, Rocker Arm
11		1	Body, Not Sold Separately
12	149-0710	1	Link and Arm, Rocker, (Only as a Set)
14	149-0551	1	Lever, Primer
15	509-0065	2	Seal, "O" Ring
16	149-0404	1	Spring, Primer Lever
17	149-0003	1	*Gasket, Pump Mounting
18	518-0129	1	Ring, Retainer, Primer Lever
19	149-0858	1	†Gasket, Diaphragm - Lower Side

\* - Parts Included in 149-0526 Repair Kit.

† - Used on some models to prevent air lock of fuel pump



## CARBURETOR

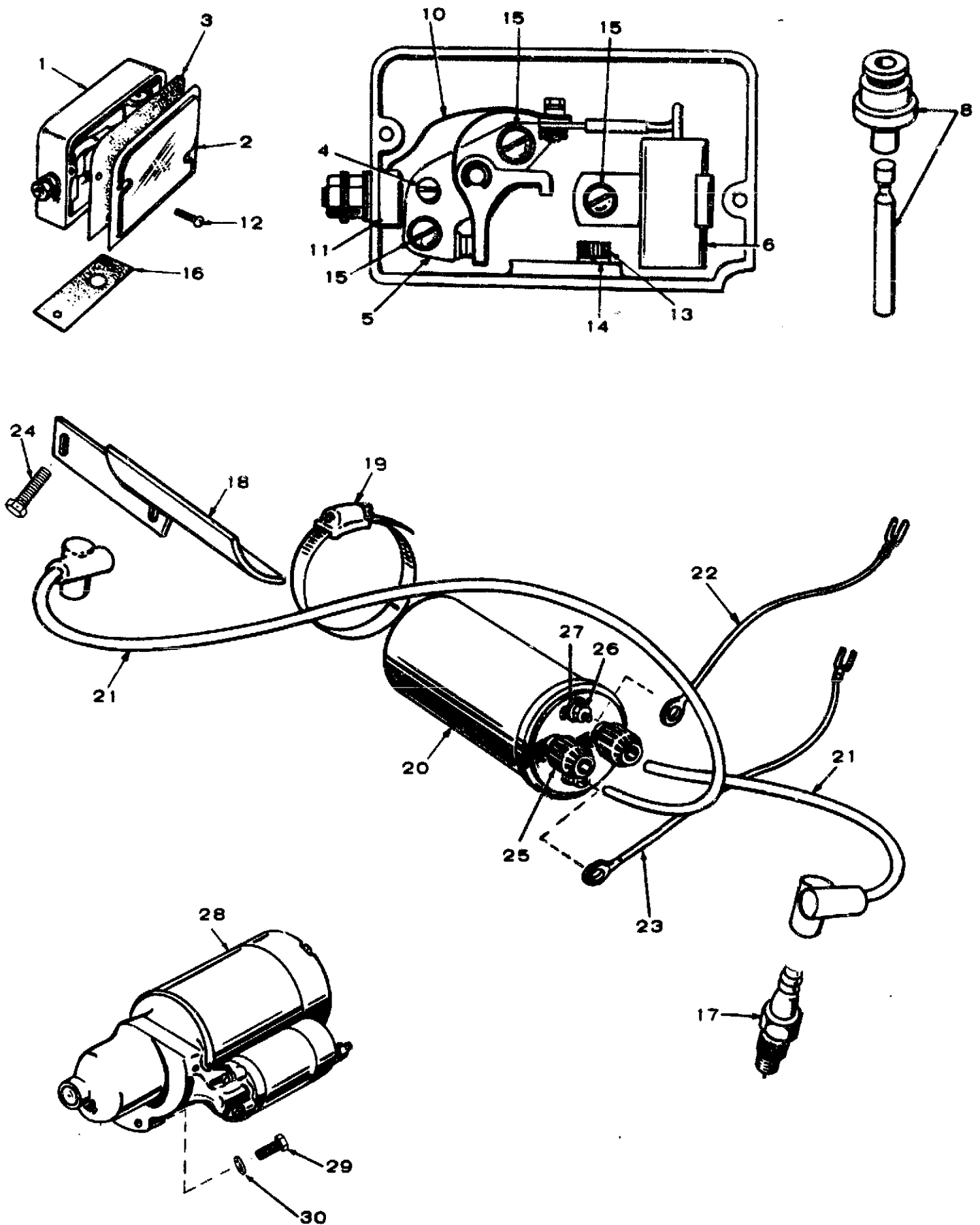


REF. NO.	PART NO.	QTY. USED	PART DESCRIPTION
	141-0879	1	Carburetor (Manual Choke)
	141-0747	1	Kit, Repair (Includes Parts Marked *)
	141-0748	1	Kit, Gasket (Includes Parts Marked £)
1	141-0281	1	£*Gasket, Carburetor Flange
2	141-0708	1	Bowl, Fuel
3	141-0741	1	Plate, Choke
4	141-0698	4	Screw and Washer, Choke and Throttle Plate Mounting (Special)
5	141-0706	1	Plate, Throttle
6	141-0705	1	*Retainer, Seal
7	141-0661	1	£*Seal, Rubber
8	141-0830	1	*Valve Seat Assembly, Fuel
9	141-0811	1	£Washer, Fuel Valve Seat (Special)
10	141-0703	1	*Shaft, Float
11	141-0702	1	Float Assembly
12	141-0701	1	£*Gasket, Bowl to Body
13	141-0700	1	Screw, Throttle Stop (Special)
14	141-0711	1	Spring, Throttle Stop
15	141-0713	1	Needle, Idle Adjusting
16	141-0710	1	Spring, Idle Needle
17	141-0077	1	£*Washer, Main Jet Assembly (Special)
18	141-0712	1	Jet Assembly, Main (Adjustable)
19	141-0742	1	Shaft, Choke
20	141-0699	1	Washer (Special)
21	141-0697	1	£*Seal, Felt
22	141-0203	1	*Retainer, Felt Seal
23	141-0709	1	Shaft and Lever, Throttle
24	141-0799	1	*Spring, Float

\* - Parts Included in 141-0747 Repair Kit.

£ - Parts Included in 141-0748 Gasket Kit.

# IGNITION SYSTEM



## IGNITION SYSTEM

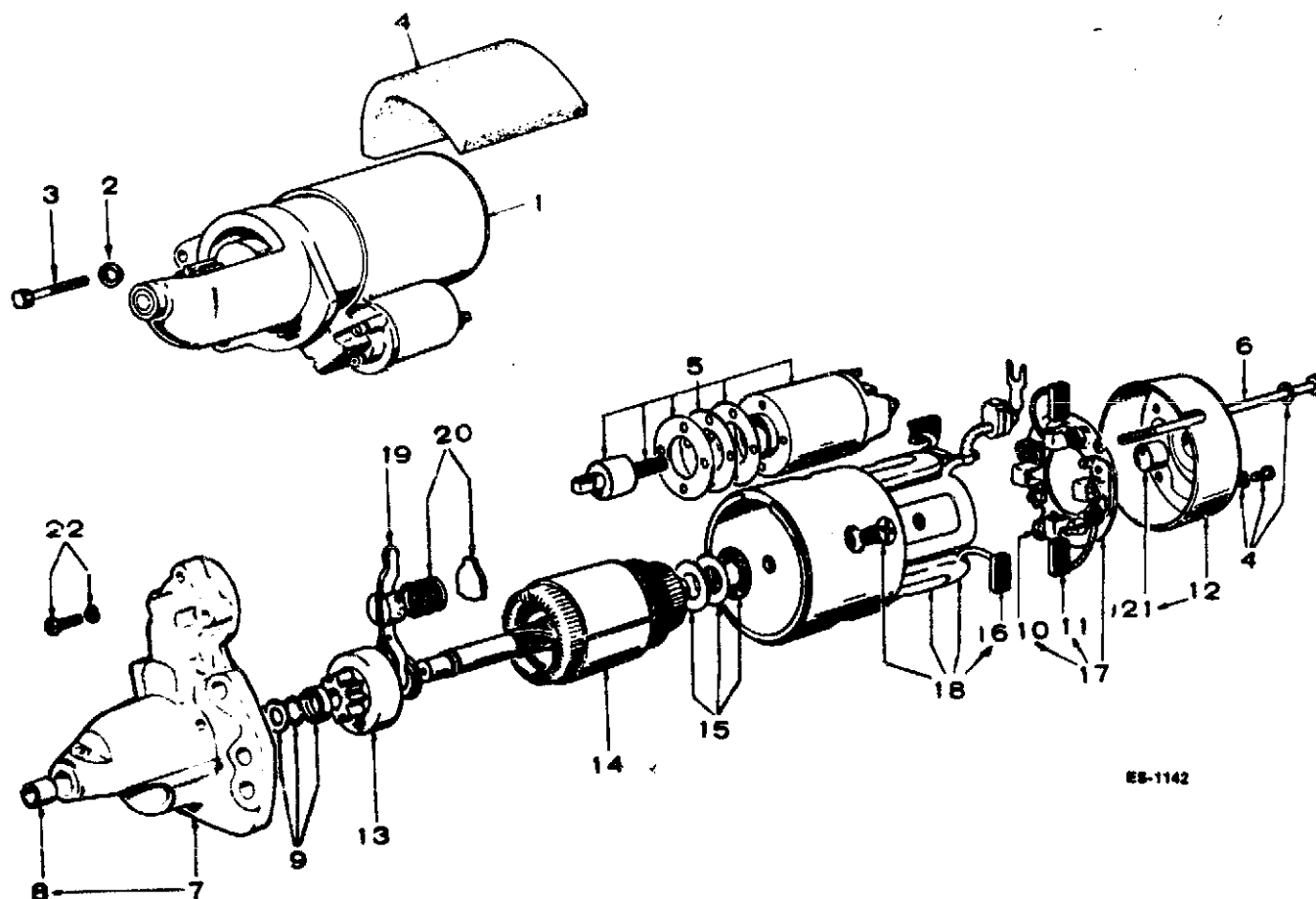
REF. NO.	PART NO.	QTY. USED	PART DESCRIPTION
1	160-0257	1	Box, Breaker (Includes Parts Marked *)
2	160-0930	1	*Cover, Breaker Box
3	160-0150	1	*Gasket, Breaker Box Cover
4	160-0075	1	*Cam, Point Gap Adjusting
5	160-0002	1	*Point Set, Breaker
6	312-0069	1	*Condenser, Breaker Points
8	160-0262	1	*Guide & Plunger
10	160-0428	1	*Strap - Point Set to Terminal Block
11	160-0349	1	*Block and Terminal Assembly, Insulator Terminal
12	812-0077	2	*Screw, Machine - Round Head - (8-32 x 3/8")
13	802-0034	3	*Screw, Cap - Socket Head - Breaker Box Mounting (1/4-20 x 3/4")
14	850-0040	2	*Washer, Lock - Spring - Breaker Box Mounting (1/4")
15	518-0049	3	*Screw, Machine - Round Head - Breaker Point Mounting & Condenser Mounting (8-32 x 1/4")
16	160-0043	1	Gasket, Breaker Box Mounting
17	PLUG, SPARK		
	167-0241	2	Non-Resistor Type
	167-0237	2	Resistor Type
18	166-0637	1	Bracket, Ignition Coil Mounting
19	503-0365	2	Clamp, Coil
20	166-0535	1	Coil, Ignition (Includes Parts Marked &)
21	CABLE, SPARK PLUG		
	167-1596	1	Right Hand (15")
	167-1595	1	Left Hand (17")
	LEAD (Kit) (Includes Parts Marked +)		
22	166-0702	1	Coil to Terminal Block
23	166-0702	1	Coil to Breaker Box
24	821-0010	2	Screw, Cap - HWH (1/4-20 x 1/2")
25	166-0904	2	&Nut, Coil - Spark Plug Cable
26	166-0554	2	+&Nut, Hex (Special)
27	850-2005	2	+&Washer - Lock (Special)
28	191-1052	1	Starter (See Separate Illustration for Complete Breakdown and Associated Parts)
29	800-0051	2	Screw, Cap - Hex Head (3/8-16 x 1-1/4")
30	850-0050	2	Washer, Lock - Spring (3/8")

\* - Parts Included in 160-0257 Breaker Box Assembly.

& - Parts Included in 166-0535 Ignition Coil.

+ - Parts Included in Replacement Kit 166-0702.

## STARTER



ES-1142

REF. NO.	PART NO.	QTY. USED	PART DESCRIPTION
1	191-1052	1	Motor, Starter - 12 Volt Solenoid Shift (Includes Parts Marked*)
2	850-0050	2	Washer, Lock - Spring (3/8")
3	800-0050	2	Screw, Cap - Hex Head (3/8-16 x 1")
4	191-1076	1	Seal, Air
5	191-0987	1	*Switch Assembly
6	191-0988	2	*Bolt, Through
7	191-1088	1	*Bracket Assembly, Front (Includes Bearing)
8	191-0971	1	*Bearing, Front Bracket
9	191-0991	1	*Stopper Set, Pinion
10	191-1007	3	†*Spring, Brush
11	191-1008	1	†*Brush, Negative
12	191-1009	1	*Bracket Assembly, Rear (Includes Bearing)

REF. NO.	PART NO.	QTY. USED	PART DESCRIPTION
13	191-1087	1	*Clutch Assembly
14	191-1088	1	*Armature
15	191-0997	1	*Washer Set
16	191-1005	2	*Brush, Positive
17	191-1006	1	†*Holder Assembly, Brush (Includes Parts Marked Δ)
18	191-1089	1	*Yoke Assembly (Includes Frame, Pole Shoes, Field Coil and Positive Brushes)
19	191-0963	1	*Lever Assembly
20	191-0984	1	*Spring Set
21	191-1010	1	*Bearing, Rear Bracket Assembly
22	191-1011	1	*Screw Set

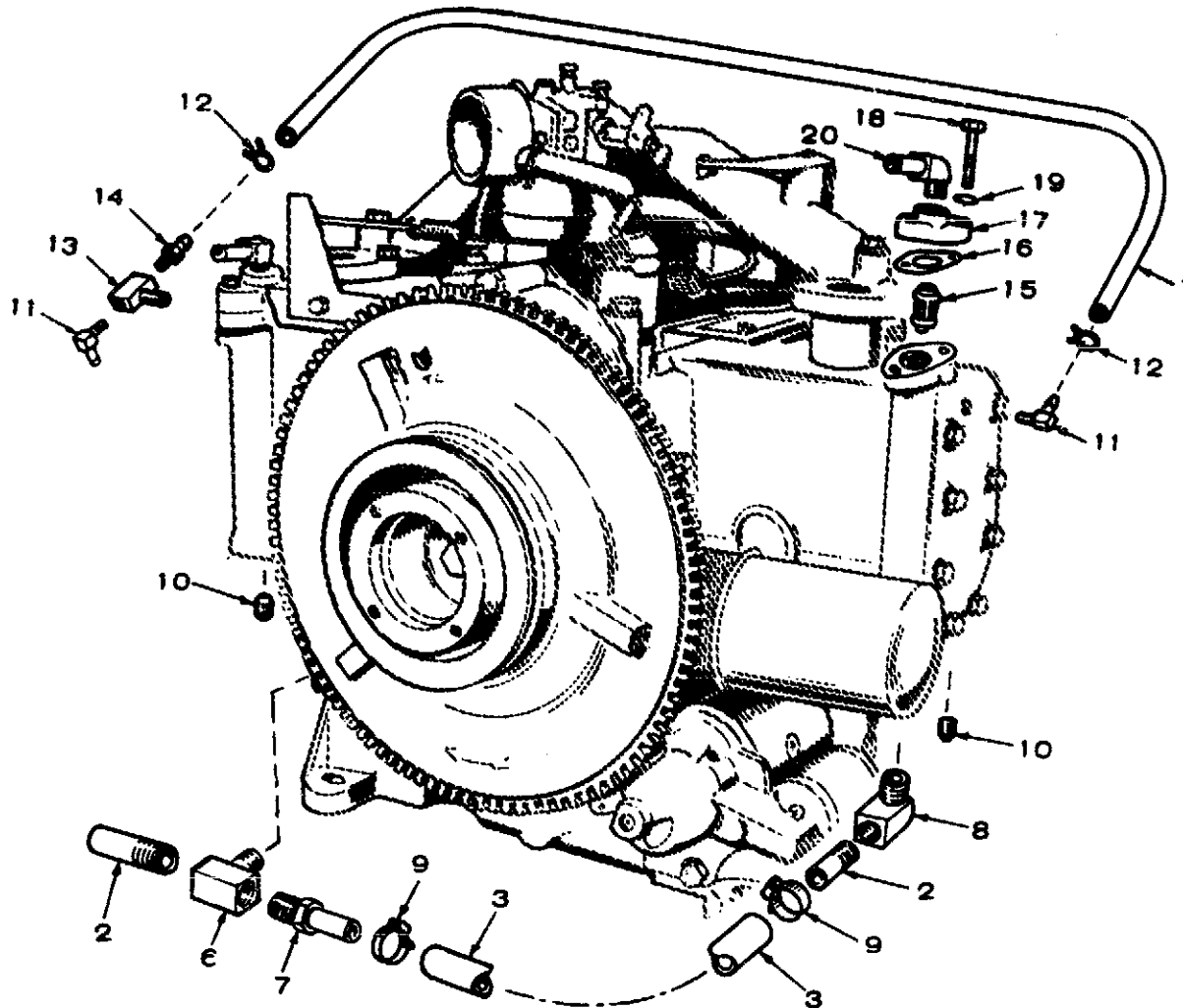
\* - Parts Included in 191-1052 Starter Motor.

Δ - Parts Included in 191-1006 Brush Holder Assembly.

† - Early brush holder was equipped with two (2) negative brushes and four (4) brush springs. Completely interchangeable with current brush holder. When replacing negative brushes on early models only one (1) required, however two (2) may be used.



## COOLING SYSTEM



REF. NO.	PART NO.	QTY. USED	PART DESCRIPTION
1	503-0757	1	Hose, By-Pass (1/4" ID x 25-1/2")
2	505-0135	1	Nipple, Half (3/8")
3	503-0697	1	Hose, Inlet (Crossover) (1/2" ID x 12")
6	502-0446	1	Tee (1/2")
7	502-0238	1	Connector, Hose
8	502-0237	1	Elbow, Hose Connector (Brass)
9	503-0547	2	Clamp, Hose
10	502-0153	2	Plug, Hex Head
11	502-0313	2	Elbow, Hose (Right Hand Cylinder Head)
12	518-0349	2	Clamp, Cylinder Head By Pass Hose

REF. NO.	PART NO.	QTY. USED	PART DESCRIPTION
13	502-0057	1	Tee, Male Branch Type (Left Hand Cylinder Head)
14	502-0395	1	Connector, Hose (Left Hand Cylinder Head)
15	309-0289	2	Thermostat
16	309-0186	2	Gasket, Thermostat Housing Mounting
17	309-0185	2	Housing, Thermostat
18	800-0007	4	Screw, Cap - Hex Head (1/4-20 x 1")
19	850-0040	4	Washer, Lock - Spring - Thermostat Housing Mounting (1/4")
20	502-0237	2	Elbow, Hose Connector (Brass)



## SERVICE KITS AND MISCELLANEOUS

PART NO.	QTY. USED	PART DESCRIPTION
98-1807	1	Decal Kit, Set
160-0836	1	Ignition Tune Up Kit
168-0132	1	Gasket Kit, Complete Engine
522-0284	1	Engine Overhaul Kit
525-0305	1	Paint, Touch Up (Pressurized 13 oz. Can) Non-Metallic Green

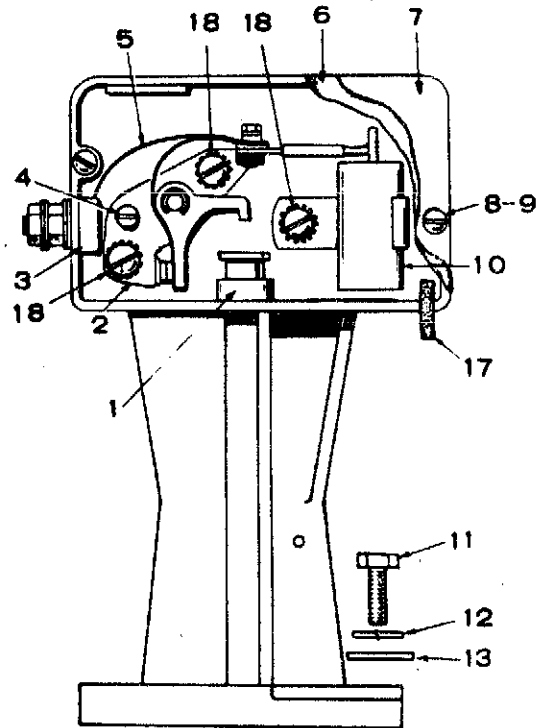
**NOTE:** For other Kits, refer to the group  
for the Part in Question.

# OPTIONAL EQUIPMENT SECTION

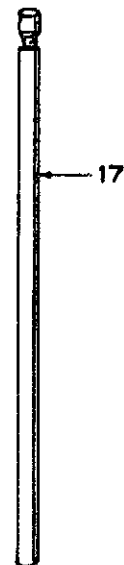
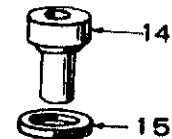
This section contains illustrated parts listing of factory installed options for these industrial engines. Options may not be applicable to all models; for field conversions additional parts are usually required. Optional parts listed in this section are in addition or in place of those shown in the standard engine parts section.

## OPTION 1 BREAKER BOX (HIGH PROFILE)

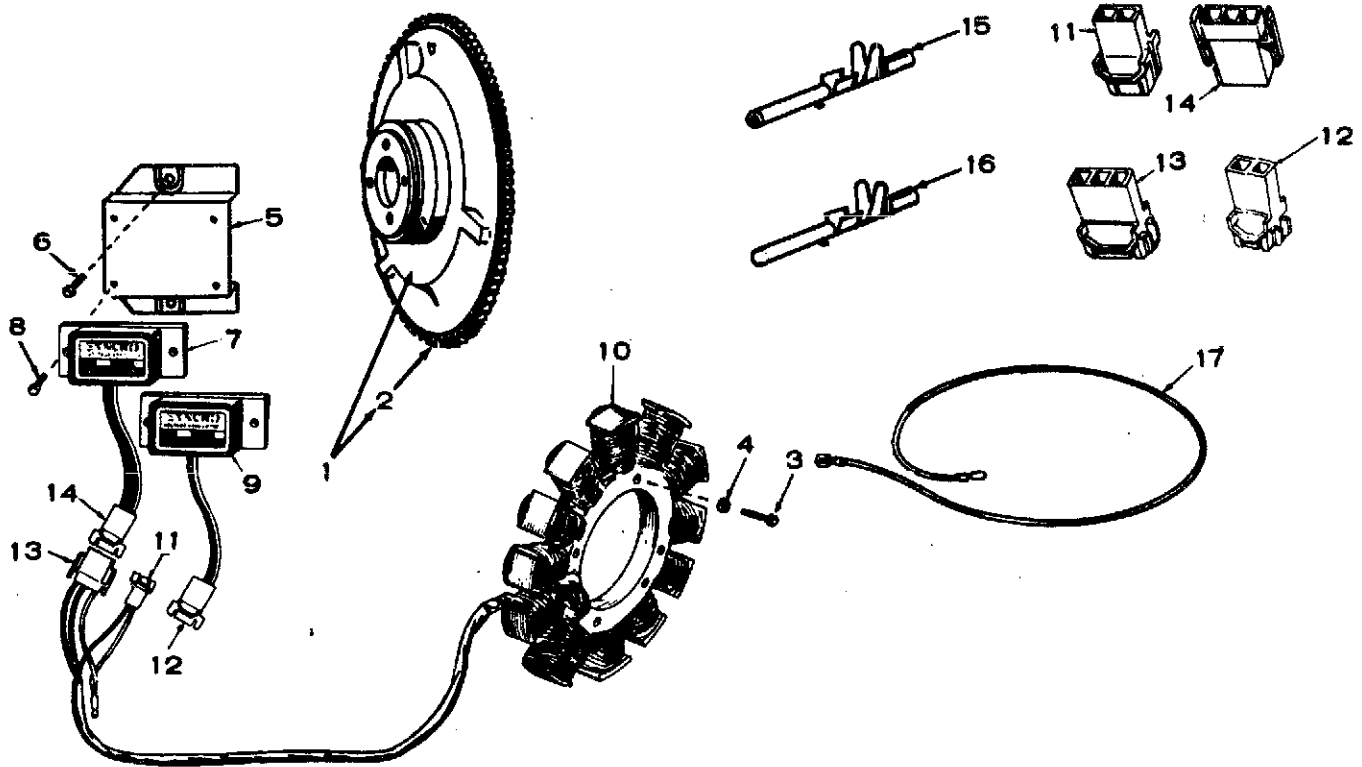
REF. NO.	PART NO.	QTY. USED	PART DESCRIPTION
	160-1135	1	Box Assembly (Includes Mounting Gasket) (Includes Parts Marked *)
1	160-0931	1	*Guide, Plunger
2	160-0002	1	*Point Set
3	160-0349	1	*Terminal and Block Assembly
4	160-0075	1	*Cam, Point Adjusting
5	160-0428	1	*Strap, Point Set to Terminal
6	160-0150	1	*Gasket, Cover
7	160-0930	1	*Cover, Breaker Box
8	850-0025	2	*Washer, Lock - Spring (#8)
9	812-0077	2	*Screw, Machine - Round Head (#8-32 x 3/8")
10	312-0069	1	*Condenser (.3 Mfd)
11	802-0035	2	*Screw, Socket Head (1/4-20 x 7/8")
12	850-0040	2	*Washer, Lock - Spring (1/4")
13	526-0214	2	*Washer, Flat (17/64" ID x 1/2" OD x 1/16" Thk)
14	160-1041	1	*Bushing, Guide
15	160-1040	1	*Gasket, Mounting
16	160-0723	1	*Plunger, Breaker
17	160-0261	1	*Wick
18	815-0285	3	*Screw, Machine - Round Head W/ET Washer (#8-32 x 5/16")



\* - Parts Included in 160-1135 Breaker Box Assembly.



## OPTION 2 FLYWHEEL ALTERNATOR - 20 AMPERE (SYNCRO)

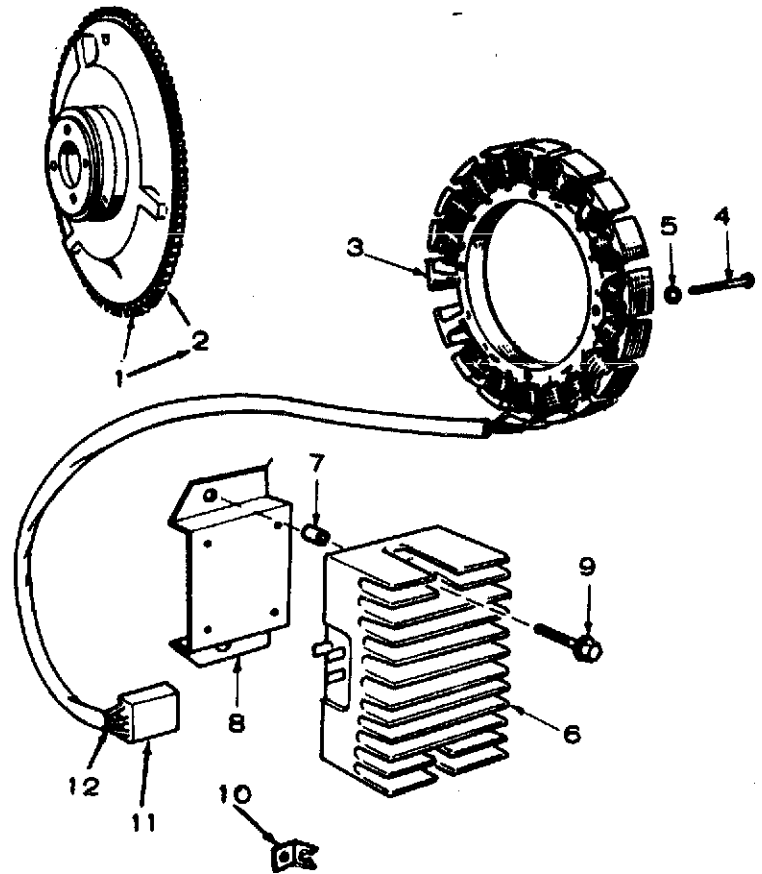


REF. NO.	PART NO.	QTY. USED	PART DESCRIPTION
1	104-0955	1	Flywheel (Includes Ring Gear)
2	134-0673	1	Gear, Ring
3	813-0108	3	Screw, Machine - Round Head - Stator Mounting (#10-32 x 1-1/2")
4	850-0030	3	Washer, Lock - Spring - Stator Mounting (#10)
5	191-1107	1	Bracket, Regulator/Rectifier Mounting
6	821-0010	2	Screw, Cap - Hex Head Self Locking - Regulator/Rectifier (1/4-20 x 1/2")
7	191-0938	1	Rectifier, Current
8	815-0181	4	Screw, Self Tapping - Hex Head Self Locking Rectifier Mounting (#10-32 x 5/16")
9	191-0939	1	Regulator, Voltage
10	191-0937	1	Stator, Alternator (12 Volt)
11	323-0879	1	Cap, Connector (2 Male Contacts)
12	323-0880	1	Plug, Connector (2 Female Contacts)
13	323-0881	1	Cap, Connector (3 Male Contacts)
14	323-0882	1	Plug, Connector (3 Female Contacts)
15	323-0488	5	Contact, Connecting (Female)
16	323-0496	5	Contact, Connecting (Male)
17	336-2222	1	Lead

### OPTION 3 FLYWHEEL ALTERNATOR - 15 AMPERE (PHELON)

REF. NO.	PART NO.	QTY. USED	PART DESCRIPTION
1	104-0953	1	Flywheel (Includes Ring Gear)
2	134-0673	1	Gear, Ring
3	191-1256	1	Stator, Alternator 12 Volt (Includes Parts Marked *)
4	813-0143	3	Screw, Machine - Round Head (#10-32 x 1-3/8")
5	850-0030	3	Washer, Lock - Spring (#10)
6	191-0886	1	Regulator, Voltage (12 Volt)
7	134-2100	2	Spacer, Regulator Mounting
8	191-1107	1	Bracket, Regulator Mounting
9	821-0012	2	Screw, Cap - HWH (1/4-20 x 1-1/8")
10	167-0188	2	Clip, Cable
11	323-0853	1	*Body, Connector
12	332-2073	2	*Terminal, Stator Lead

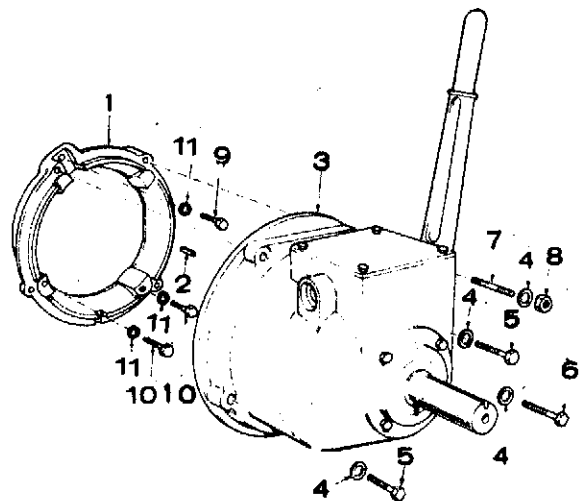
\* Parts Included in Stator.



### OPTION 4 CLUTCH

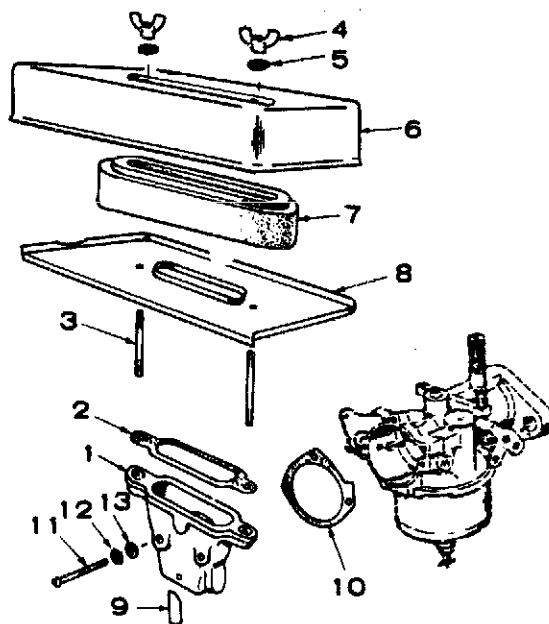
REF. NO.	PART NO.	QTY. USED	PART DESCRIPTION
	190-0178	1	Kit, Clutch - Complete
1	190-0171	1	Adapter, Clutch to Engine
2	515-0041	1	Key, Clutch
3	190-0174	1	*Clutch Assembly
4	850-0055	3	Washer, Lock - Spring (7/16")
5	800-0074	1	Screw, Cap - Hex Head (7/16-14 x 1-3/4")
6	800-0075	2	Screw, Cap - Hex Head (7/16-14 x 2")
7	520-0126	1	Stud (3/8 x 3-7/8")
8	104-0091	1	Nut, Hex (Special)
9	800-0053	1	Screw, Cap - Hex Head (3/8-16 x 1-3/4")
10	800-0054	2	Screw, Cap - Hex Head (3/8-16 x 2")
11	850-0050	4	Washer, Lock - Spring (3/8")

\* - For Components, contact your nearest Rockford Clutch dealer, Borg Warner Corporation  
Rockford, Illinois 61100



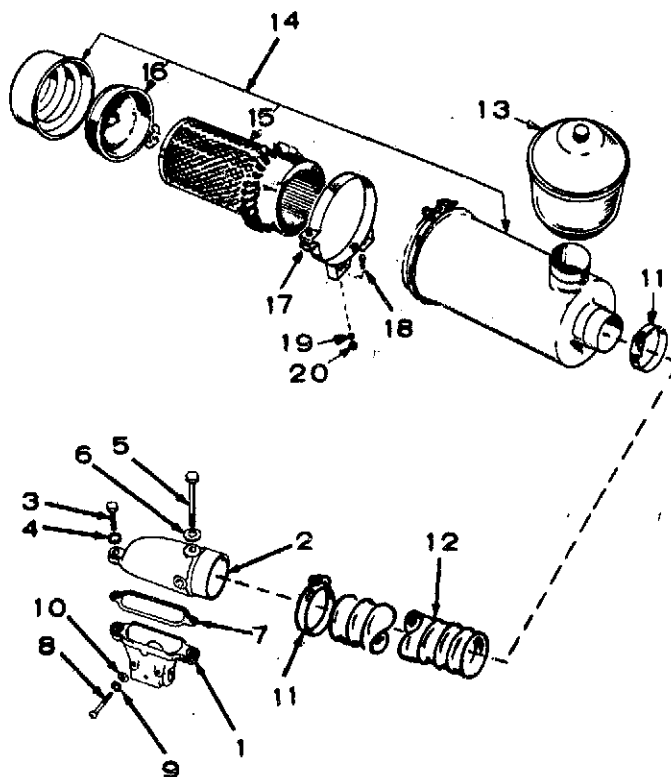
## OPTION 5 AIR CLEANER

REF. NO.	PART NO.	QTY. USED	PART DESCRIPTION
1	140-1304	1	Adapter, Air Cleaner
2	140-0584	1	Gasket, Air Cleaner
3	520-0621	2	Stud, Air Cleaner
4	865-0020	2	Nut - Wing (1/4-20)
5	526-0063	2	Washer, Flat - Copper (17/64" ID x 7/16" OD x 1/32" Thk)
6	140-0594	1	Cover, Air Cleaner
7	140-0636	1	Element, Air Cleaner
8	140-0595	1	Pan, Air Cleaner
9	123-0732	1	Tube, Adapter to Breather Hose
10	140-1087	1	Gasket - Adapter to Carburetor
11	813-0108	2	Screw, Machine - Round Head (10-32 x 1/2")
12	850-0030	2	Washer, Lock - Spring (#10)
13	526-0241	2	Washer, Flat (.188 ID x .438 OD x .049" Thk)



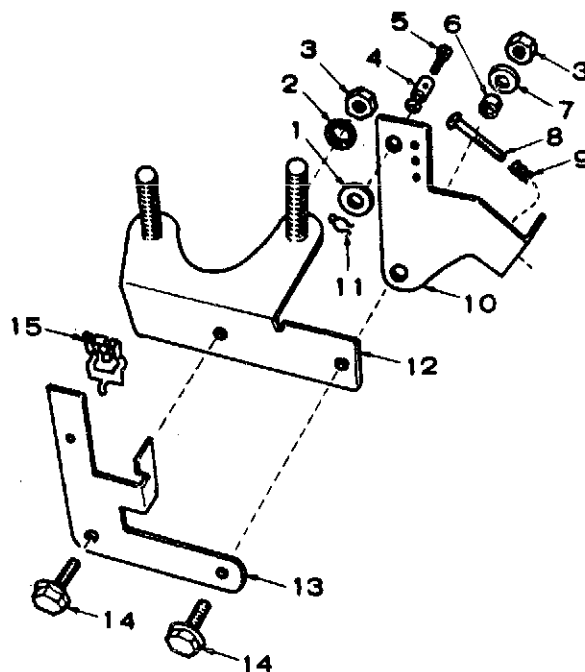
## OPTION 6 REMOTE AIR CLEANER

REF. NO.	PART NO.	QTY. USED	PART DESCRIPTION
1	140-1304	1	Adapter, Air Cleaner
2	140-0645	1	Adapter, Air Cleaner
3	800-0007	1	Screw, Cap - Hex Head (1/4-20 x 1")
4	850-0040	1	Washer, Lock - Spring (1/4")
5	800-0015	1	Screw, Cap - Hex Head (1/4-20 x 3")
6	526-0108	1	Washer, Flat (17/64" ID x 7/16" OD x 1/32" Thk)
7	140-0584	1	Gasket, Air Cleaner Adapter
8	813-0108	2	Screw, Machine - Round Head (#10-32 x 1-1/2")
9	850-0030	2	Washer, Lock - Spring (#10)
10	526-0241	2	Washer, Flat (.188 ID x .438 OD x .049" Thk)
11	503-0274	2	Clamp, Hose
12	503-0444	1	Hose, Air Cleaner (2" ID x 30")
13	140-0723	1	Pre-cleaner, Air Cleaner
14	140-0721	1	Cleaner, Air (Includes Element)
15	140-0765	1	Element, Only, Air Cleaner
16	140-1267	1	Baffle, Air Cleaner
17	140-0722	2	Band, Air Cleaner Mounting
18	800-0024	4	Screw, Cap - Hex Head (5/16-18 x 1/2")
19	850-0045	4	Washer, Lock - Spring (5/16")
20	832-0015	4	Nut, Hex (5/16-18)



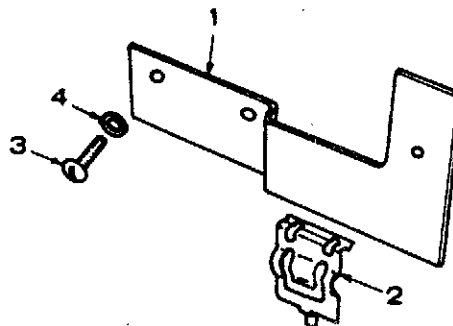
## OPTION 7 GOVERNOR CONTROL - VARIABLE SPEED (SIDE PULL)

REF. NO.	PART NO.	QTY. USED	PART DESCRIPTION
1	526-0006	1	Washer, Flat (15/64" ID x 1/2" OD x 3/64")
2	850-0040	1	Washer, Lock - Spring (1/4")
3	862-0001	2	Nut, Hex (1/4-20)
4	152-0155	1	Swivel, Choke Lever
5	815-0104	1	Screw, Machine - Fillister Head (#8-32 x 5/16")
6	150-1269	1	Bushing, Governor Control
7	526-0214	1	Washer, Flat (17/64" ID x 1/2" OD x 1/16" Thk)
8	812-0068	1	Screw, Machine - Round Head (#6-32 x 1")
9	150-1398	1	Spring, Governor Idle
10	150-1435	1	Arm, Governor Control
11	516-0059	1	Pin, Cotter
12	150-1690	1	Bracket, Governor Mounting
13	150-1343	1	Bracket, Governor Mounting
14	800-0004	2	Screw, Cap - HWH (1/4-20 x 5/8")
15	518-0176	1	Clip, Cable

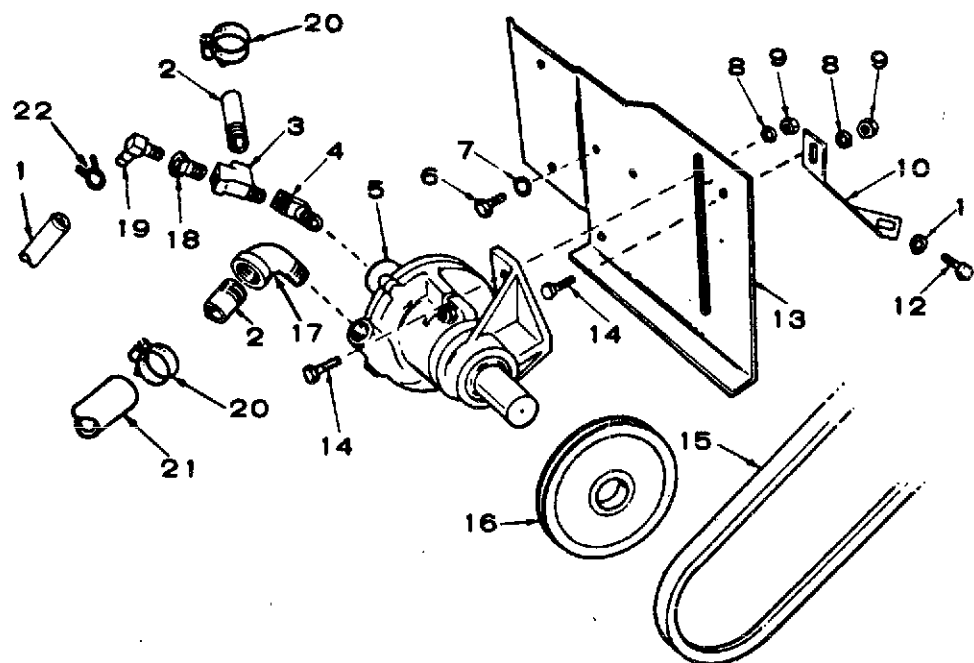


## OPTION 8 FRONT PULL CHOKE ADAPTER

REF. NO.	PART NO.	QTY. USED	PART DESCRIPTION
1	153-0464	1	Bracket, Choke Cable
2	518-0176	1	Clip, Cable
3	813-0097	2	Screw, Machine - Round Head (#10-32 x 5/16")
4	850-0030	2	Washer, Lock - Spring (#10)



## OPTION 9 MOUNTED WATER PUMP



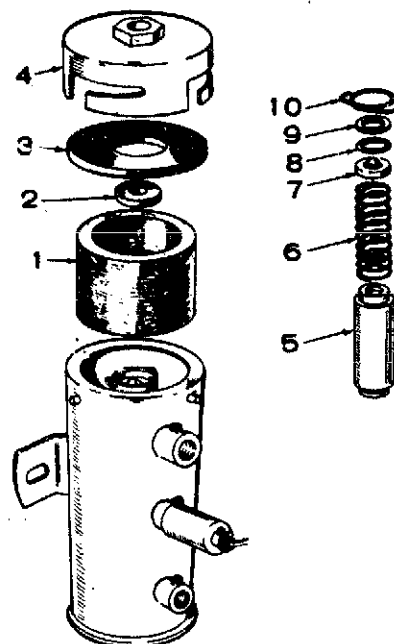
REF. NO.	PART NO.	QTY. USED	PART DESCRIPTION
1	503-0737	1	Hose, Rubber (1/4" ID x 8")
2	505-0135	2	Nipple, Half (3/8)
3	502-0401	1	Tee, Pipe (3/8)
4	502-0075	1	Elbow, Pipe (90°)
5	132-0110	1	Pump, Water (See Separate Illustration for Component Parts)
6	800-0026	3	Screw, Cap - Hex Head (5/16-18 x 3/4")
7	850-0045	3	Washer, Lock - Spring (5/16")
8	850-0040	3	Washer, Lock - Spring (1/4")
9	862-0001	3	Nut, Hex (1/4-20)
10	130-1131	1	Support, Water Pump
11	526-0021	1	Washer, Flat (17/64" ID x 3/4" OD x 1/16" Thk)
12	821-0018	1	Screw, Cap - HWH (5/16-18 x 1")
13	130-1113	1	Bracket, Water Pump Mounting
14	800-0006	3	Screw, Cap - Hex Head (1/4-20 x 7/8")

REF. NO.	PART NO.	QTY. USED	PART DESCRIPTION
15	BELT, WATER PUMP DRIVE		
	511-0102	1	Use W/512-0061 Water Pump Pulley
	511-0051	1	Use W/512-0067 Water Pump Pulley
16	PULLEY, WATER PUMP		
	512-0061	1	(4" Dia.) Use W/104-0952 Flywheel
	512-0067	1	(5" Dia.) Use W/104-0967 Flywheel
17	502-0532	1	Elbow, Street (3/8 x 45°)
18	502-0049	1	Bushing, Pipe
19	502-0313	1	Elbow, Hose (1/4" Hose, 1/8" NPT)
20	503-0183	2	Clamp, Hose Outlet
21	503-0777	1	Hose, Rubber (5/8" ID x 4-5/8")
22	518-0349	2	Clamp, By-Pass Hose



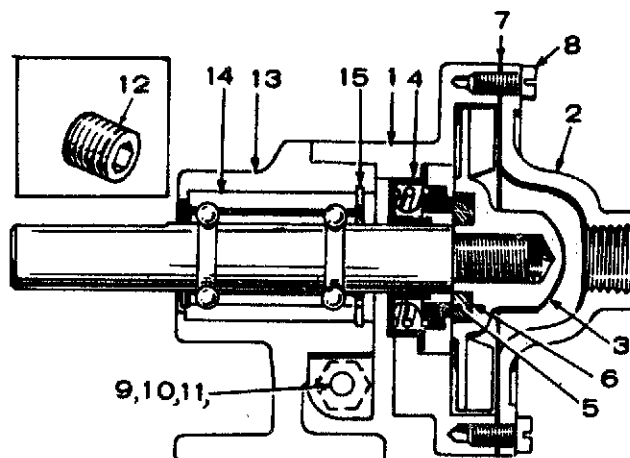
## OPTION 10 FUEL PUMP PARTS (ELECTRIC)

REF. NO.	PART NO.	QTY. USED	PART DESCRIPTION
	149-0650	1	Pump, Fuel
1	149-1445	1	Filter
2	149-1447	1	Magnet
3	149-1446	1	Gasket, Cover
4	149-1453	1	Cover
5	149-1452	1	Plunger
6	149-0767	1	Spring, Plunger Return
7	149-1451	1	Spring Cup & Valve
8	149-1450	1	Gasket, Spring Cup
9	149-1449	1	Washer, Cup Gasket (Special)
10	149-1448	1	Retainer, Cup & Plunger



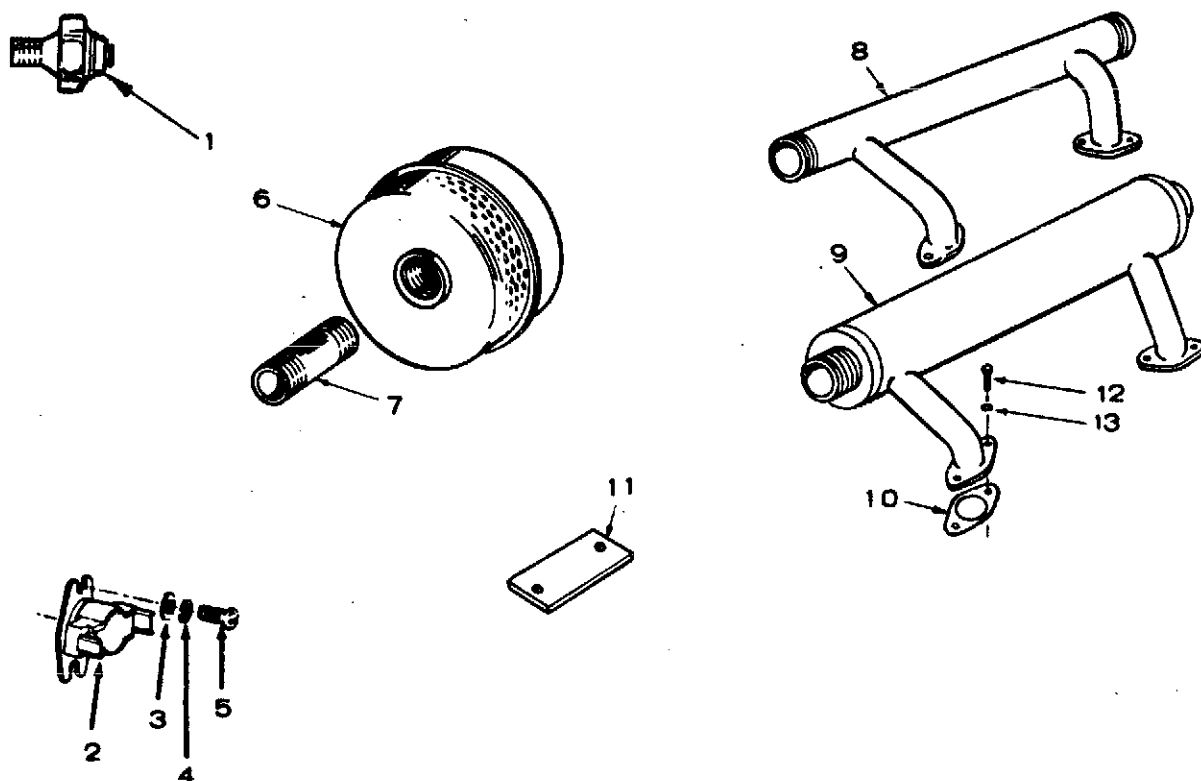
## OPTION 11 WATER PUMP

REF. NO.	PART NO.	QTY. USED	PART DESCRIPTION
	132-0110	1	Pump, Water - Complete
	132-0111	1	Repair Kit (Includes Parts Marked *)
1		1	Body, Pump (Not Sold Separately)
2	132-0137	1	Cover, Pump
3	132-0114	1	*Impeller
4	132-0101	1	*Seal
5	132-0091	1	*Face, Wear
6	132-0092	1	*Seat, Seal
7	132-0112	1	*Gasket, Cover
8	132-0113	6	*Screw, Cover (Special)
9	132-0138	1	Screw, Cap (Special)
10	132-0139	1	Lockwasher (Special)
11	132-0140	1	Nut, Hex (Special)
12	132-0141	1	Plug, Drain
13	132-0142	1	Pedestal
14	132-0089	1	*Shaft and Bearing Assembly
15	132-0132	1	Ring, Snap



\* - Parts included in the 132-0111 Repair Kit.

## MISCELLANEOUS OPTIONS



REF. NO.	PART NO.	QTY. USED	PART DESCRIPTION
1	309-0237	1	Switch, Low Oil Pressure
2	309-0259	1	Switch, High Temperature - Water
3	526-0016	2	Washer, Flat (17/64" ID x 9/16" OD x 1/32" Thk)
4	854-0014	2	Washer, Lock - IT (1/4")
5	812-0145	2	Screw, Machine - Round Head (1/4-20 x 5/16")
6	155-0916	2	Muffler, Exhaust
7	505-0086	2	Nipple, Exhaust
8	154-0998	1	Manifold, Exhaust
9	155-0906	1	Muffler, Exhaust
10	154-0973	1	Gasket, Exhaust Manifold
11	149-0136	1	Cover, Fuel Pump Hole
12	800-0028	4	Screw, Cap - Hex Head (5/16-18 x 1")
13	850-0045	4	Washer, Lock (5/16")

**OPTIONAL GROUPS IN CATALOG ARE LISTED BY GROUP NO. BELOW WHEN USED.**

### DESCRIPTION

## Standard Model

SPECIAL PARTS LIST FOR MODEL RCCK-MS SPEC 3199A  
 FOR STANDARD PARTS REFER TO CATALOG 927-0252 KEY NO.         
 OPTIONAL GROUPS IN CATALOG ARE LISTED BY GROUP NO. BELOW WHEN USED.

PART NO.	QTY.	DESCRIPTION	PART NO.	QTY.	DESCRIPTION
Low Oil Pressure Cut Off High Water Temperature Cut Off 15 AMP Flywheel Alternator - Option 3 Front Pull Choke - Option 8					
103-0480	1	Gearcase Assembly, Complete (Includes Parts Marked *)			
150-1422	1	*Arm and Shaft, Governor (See Catalog 927-0252 for Balance of Breakdown Parts)			
150-1073	1	Arm, Governor - Front Pull			
110-1478	1	Head, Cylinder - RH			
110-1479	1	Head, Cylinder - LH			
154-0951	1	Manifold, Intake			
505-0101	1	Nipple, Close-Inlet Crossover (3/8 X 1")			
140-0645	1	Adapter, Air Cleaner			

SPECIAL PARTS LIST FOR **MODEL** RCCK-MS **SPEC** 3213A  
 FOR STANDARD PARTS REFER TO **CATALOG** 927-0252 **KEY NO.**         
 OPTIONAL GROUPS IN CATALOG ARE LISTED BY GROUP NO. BELOW WHEN USED.

PART NO.	QTY.	DESCRIPTION	PART NO.	QTY.	DESCRIPTION
Sold To: THERMO KING			150-1009	1	Stud, Governor Adjust
			150-0098	1	Spring, Governor
110-2556	1	Block Assembly, Cylinder (Includes Breather Tube 123-0953)(See Catalog 927-0252 for Parts Breakdown of Cylinder Block Assembly)	502-0238	2	Connector, Hose
104-1293	1	Crankshaft (Includes Parts Marked *)	142-0653	1	Carburetor, Gasoline (Includes Mounting Gasket 141-0078) (Includes Parts Marked °)
515-0001	1	*Key, Crank Gear (#3)	142-0368	1	°Shaft, Throttle
515-0006	1	*Key, Woodruff (7/8 x 1/4")	142-0369	1	°Fly, Throttle
515-0094	2	*Key, Woodruff (#6)	148-0017	2	°Gasket (1-Float Valve Seat 1-Main Adjusting Needle)
105-0140	1	Camshaft (Includes Center Pin)	142-0606	1	°Gasket, Throttle Body to Bowl
112-0170	2	Piston and Pin (Includes Retaining Rings)	142-0032	1	°Gasket, Nozzle
113-0089	2	Ring Set, Piston	142-0282	1	°Spring, Idle Needle
114-0145	4	Bearing, Connecting Rod	142-0192	1	°Shaft, Choke
110-1037	2	Valve, Intake	142-0055	1	°Fly, Choke
120-0439	1	Cup, Oil Pump Intake (Includes Cup, Screen and Pipe)	142-0361	1	°Float and Lever Assembly
102-0824	1	Base, Oil (8 Quart)	142-0039	1	°Shaft, Float
520-0119	4	Stud, Oil Base	142-0040	1	°Needle, Idle
104-0091	4	Nut, Hex-Oil Base Stud (Special)	142-0041	1	°Needle, Main Adjust
505-0247	2	Plug, Oil Drain	142-0042	1	°Needle Assembly, Adjust
518-0321	1	Spray-a-Gasket (Apply to Metal Surface in Contact with Oil Base Gasket)	142-0206	1	°Packing, Main Adjusting Needle
103-0282	1	Gearcase Assembly (Includes Parts Marked x)	142-0285	1	°Nozzle Assembly
150-0620	1	xYoke, Governor	142-0588	1	°Nut, Jet and Nozzle Retaining
150-0377	1	xArm and Shaft, Governor	142-0045	1	°Retainer, Main Adjust Needle Packing
510-0008	1	xBearing, Needle (See Catalog 927-0252 for Balance of Break- down Parts)	142-0046	1	°Retainer, Main Adjusting Needle
510-0019	1	Bearing, Gear Cover	142-0343	2	°Bushing, Throttle Shaft
509-0013	1	Oil Seal, Front	142-0459	1	°Valve and Seat Assembly
149-0003	1	Gasket, Fuel Pump Mounting	142-0589	1	Repair Kit, Carburetor
150-1577	1	Bracket, Governor Spring	142-0033	1	Gasket Kit, Carburetor
123-1348	1	Cap and Indicator, Oil Fill			
123-1328	1	Tube, Oil Fill			
123-0092	1	Gasket, Oil Fill Tube			
122-0438	1	Cover, Oil Filter Pad			
503-0761	1	Hose, Breather			
503-0769	2	Clamp, Breather Hose			
309-0064	1	Switch, Low Oil Pressure			
160-1205	1	Breaker Box Assembly (See Catalog 927-0252 for Breakdown of Parts)			
309-0296	1	Switch, High Water Temperature Cut Off			
150-0678	1	Clip, Sensitivity-Governor			

SPECIAL PARTS LIST FOR **MODEL** RCCK-MS **SPEC** 3236A  
 FOR STANDARD PARTS REFER TO **CATALOG** 927-0252 **KEY NO.**         
 OPTIONAL GROUPS IN CATALOG ARE LISTED BY GROUP NO. BELOW WHEN USED.

PART NO.	QTY.	DESCRIPTION	PART NO.	QTY.	DESCRIPTION
----------	------	-------------	----------	------	-------------

Sold To: OAKS MFG COMPANY  
 High Profile Breaker Box - Option 1  
 15 AMP Flywheel Alternator - Option 3  
 Variable Side Pull Governor - Option 7  
 Front Pull Choke - Option 8  
 Mounted Water Pump - Option 9

526-0214	2	Washer, Flat (17/64 ID X 1/2 OD X 1/16" THK)
505-0845	1	Nipple, Half (3/8 X 2 1/2")
150-1725	1	Governor Mounting Bracket

SPECIAL PARTS LIST FOR MODEL RCUK-MS SPEC 335DA  
 FOR STANDARD PARTS REFER TO CATALOG 927-0252 KEY NO.         
 OPTIONAL GROUPS IN CATALOG ARE LISTED BY GROUP NO. BELOW WHEN USED.

PART NO.	QTY.	DESCRIPTION	PART NO.	QTY.	DESCRIPTION
Sold To: THERMO KING			150-1009	1	Stud, Governor
			150-0098	1	Spring, Governor
			502-0238	2	Connector, Hose
110-2556	1	Block Assembly, Cylinder (Includes Breather Tube 123-0953)(See Catalog 927-0252 for Parts Breakdown of Cylinder Block Assembly)	142-0653	1	Carburetor, Gasoline (Includes Mounting Gasket 141-0078) (Includes Parts Marked °)
104-1293	1	Crankshaft (Includes Parts Marked *)	142-0368	1	°Shaft, Throttle
515-0001	1	*Key, Crank Gear (#3)	142-0369	1	°Fly, Throttle
515-0006	1	*Key, Woodruff (7/8 x 1/4")	148-0017	2	°Gasket (1-Float Valve Seat 1-Main Adjusting Needle)
515-0094	2	*Key, Woodruff (#6)	142-0606	1	°Gasket, Thottle Body to Bowl
105-0140	1	Camshaft (Includes Center Pin)	142-0032	1	°Gasket, Nozzle
112-0170	2	Piston and Pin (Includes Retaining Rings)	142-0282	1	°Spring, Idle Needle
113-0089	2	Ring Set, Piston	142-0192	1	°Shaft, Choke
114-0145	4	Bearing, Connecting Rod	142-0055	1	°Fly, Choke
110-1037	2	Valve, Intake	142-0361	1	°Float and Lever Assembly
120-0439	1	Cup, Oil Pump Intake (Includes Cup, Screen and Pipe)	142-0039	1	°Shaft, Float
102-0824	1	Base, Oil	142-0040	1	°Needle, Idle
520-0119	4	Stud, Oil Base	142-0041	1	°Needle, Main Adjust
104-0091	4	Nut, Hex-Oil Base Stud (Special)	142-0042	1	°Needle Assembly, Adjust
505-0247	2	Plug, Oil Drain	142-0206	1	°Packing, Main Adjusting Needle
518-0321	1	Spray-a-Gasket (Apply to Metal Surface in Contact with Oil Base Gasket)	142-0285	1	°Nozzle Assembly
103-0282	1	Gearcase Assembly (Includes Parts Marked x)	142-0588	1	°Nut, Jet and Nozzle Retaining
150-0620	1	xYoke, Governor	142-0045	1	°Retainer, Main Adjust Needle Packing
150-0377	1	xArm and Shaft, Governor	142-0046	1	°Retainer, Main Adjusting Needle
510-0008	1	xBearing, Needle (See Catalog 927-0252 for Balance of Break- down Parts)	142-0343	2	°Bushing, Throttle Shaft
510-0019	1	Bearing, Gear Cover	142-0459	1	°Valve and Seat Assembly
509-0013	1	Oil Seal, Front	142-0589	1	Repair Kit, Carburetor
149-0003	1	Gasket, Fuel Pump Mounting	142-0033	1	Gasket Kit, Carburetor
150-1577	1	Bracket, Governor Spring			
123-1348	1	Cap and Indicator, Oil Fill			
123-1328	1	Tube, Oil Fill			
123-0092	1	Gasket, Oil Fill Tube			
122-0438	1	Cover, Oil Filter Pad			
503-0761	1	Hose, Breather			
503-0769	2	Clamp, Breather Hose			
309-0064	1	Switch, Low Oil Pressure			
160-1205	1	Breaker Box Assembly (See Catalog 927-0252 for Breakdown of Parts)			
150-0678	1	Clip, Sensitivity-Governor			

SPECIAL PARTS LIST FOR MODEL RCCK-MS SPEC 3387A

FOR STANDARD PARTS REFER TO CATALOG 927-0252 KEY NO.       

OPTIONAL GROUPS IN CATALOG ARE LISTED BY GROUP NO. BELOW WHEN USED.

PART NO.	QTY.	DESCRIPTION	PART NO.	QTY.	DESCRIPTION
20 Amp Flywheel Alternator-Option 2					
Air Cleaner-Option 5					
Front Pull Choke Adapter-Option 8					
110-2728	1	Block Assembly, Cylinder (Includes Parts Marked *)			
110-1000	2	*Insert, Intake Valve			
123-0953	1	*Tube, Breather (Note: For Balance of Cylinder Block Breakdown See Catalog 927-0252 Parts Marked *)			
110-1037	2	Valve, Intake			
167-0188	2	Clip, Support (1-Lower Left Gearcase 1-Oil Fill Tube)			
505-0618	1	Cap, Pipe (1 1/2" Dia.)			



SPECIAL PARTS LIST FOR **MODEL** R0CK-MF **SPEC** 3396A  
 FOR STANDARD PARTS REFER TO **CATALOG** 927-0252 **KEY NO.**         
 OPTIONAL GROUPS IN CATALOG ARE LISTED BY GROUP NO. BELOW WHEN USED.

PART NO.	QTY.	DESCRIPTION	PART NO.	QTY.	DESCRIPTION
15 AMP Flywheel Alternator - Option 3 Clutch - Option 4					
104-0913	1	Crankshaft (NOTE: When Ordering As A Replacement, Must Order Key - P/N 515-0001 Also)			

SPECIAL PARTS LIST FOR **MODEL** RCCK-MS **SPEC** 3429A  
 FOR STANDARD PARTS REFER TO **CATALOG** 927-0252 **KEY NO.**         
 OPTIONAL GROUPS IN CATALOG ARE LISTED BY GROUP NO. BELOW WHEN USED.

PART NO.	QTY.	DESCRIPTION	PART NO.	QTY.	DESCRIPTION
110-2386	1	Block Assembly, Cylinder (Includes Parts Marked *)			
110-1000	2	*Seat, Intake Valve (See Catalog 927-0252 for Balance of Breakdown Parts Cylinder Block Assembly Parts Marked *)			
110-1037	2	Valve, Intake			
110-0880	2	Valve, Exhaust			

SPECIAL PARTS LIST FOR **MODEL** RCCK-MS **SPEC** 3449A  
 FOR STANDARD PARTS REFER TO **CATALOG** 927-0252 **KEY NO.**         
 OPTIONAL GROUPS IN CATALOG ARE LISTED BY GROUP NO. BELOW WHEN USED.

PART NO.	QTY.	DESCRIPTION	PART NO.	QTY.	DESCRIPTION
20 Amp Flywheel Alternator-Option 2 Variable Speed Governor Control (Side Pull)-Option 7 Front Pull Choke Adapter-Option 8					
167-0188	2	Clip, Cable-Gearcase Left, and Oil Fill Tube			

SPECIAL PARTS LIST FOR **MODEL** RCCK-MS **SPEC** 3510A  
 FOR STANDARD PARTS REFER TO **CATALOG** 927-0252 **KEY NO.**         
 OPTIONAL GROUPS IN CATALOG ARE LISTED BY GROUP NO. BELOW WHEN USED.

PART NO.	QTY.	DESCRIPTION	PART NO.	QTY.	DESCRIPTION
Sold To: THERMO KING			309-0064	1	Switch, Low Oil Pressure
			160-1205	1	Breaker Box Assembly (See Catalog 927-0252 for Breakdown of Parts)
110-2556	1	Block Assembly, Cylinder (Includes Breather Tube 123-0953)(See Catalog 927-0252 for Parts Breakdown of Cylinder Block Assy)	148-0798	1	Carburetor, Propane Note: When ordering as a replacement, order mounting gasket 141-0281 also.
104-1293	1	Crankshaft (Includes Parts Marked *)	502-0238	2	Connector, Hose
515-0001	1	*Key, Crank Gear (#3)	150-0096	1	Stud, Governor
515-0006	1	*Key, Woodruff (7/8 x 1/4")	150-0098	1	Spring, Governor
515-0094	2	*Key, Woodruff (#6)	150-1577	1	Bracket, Governor Spring
105-0140	1	Camshaft (Includes Center Pin)	150-0678	1	Clip, Sensitivity-Governor
112-0170	2	Piston & Pin (Includes Retaining Rings)	150-1616	1	Rod, Governor
113-0089	2	Ring Set, Piston			
114-0145	4	Bearing, Connecting Rod			
110-1037	2	Valve, Intake			
110-0893	4	Retainer, Valve Spring			
120-0439	1	Cup, Oil Pump Intake (Includes Cup, Screen & Pipe)			
102-0824	1	Base, Oil			
520-0119	4	Stud, Oil Base			
104-0091	4	Nut, Hex-Oil Base Stud (Special)			
505-0247	2	Plug, Oil Drain			
518-0321	1	Spray-a-Gasket (Apply to Metal Surface in Contact with Oil Base Gasket)			
103-0395	1	Gearcase Assembly, Complete (Includes Parts Marked x)			
150-1315	1	xArm and Shaft, Governor			
509-0105	1	xSeal, Oil (2" OD) Single Lip			
509-0126	1	xSeal, Oil (2.004" OD)			
510-0008	1	xBearing, Needle (See Catalog 927-0252 for Balance of Breakdown Parts)			
510-0019	1	Bearing, Ball-Gear Cover			
509-0013	1	Oil Seal, Front			
110-1481	2	Gasket, Cylinder Head			
110-2543	1	Head, Cylinder-R.H.			
110-2348	1	Head, Cylinder-L.H.			
123-1348	1	Cap and Indicator, Oil Fill			
123-1328	1	Tube, Oil Fill			
123-0092	1	Gasket, Oil Fill Tube			
122-0438	1	Cover, Oil Filter Pad			
503-0761	1	Hose, Breather			
503-0769	2	Clamp, Breather Hose			

SPECIAL PARTS LIST FOR **MODEL** RCCK-MS **SPEC** 3611A  
 FOR STANDARD PARTS REFER TO **CATALOG** 927-0252 **KEY NO.**         
 OPTIONAL GROUPS IN CATALOG ARE LISTED BY GROUP NO. BELOW WHEN USED.

PART NO.	QTY.	DESCRIPTION	PART NO.	QTY.	DESCRIPTION
Sold To: Thermo King					
110-2556	1	Block Assembly, Cylinder (Includes Breather Tube 123-0953) (See Catalog 927-0252 for Parts Breakdown of Cylinder Block Assembly)	503-0769	2	Clamp, Breather Hose
104-1293	1	Crankshaft (Includes Parts Marked *)	309-0064	1	Switch, Low Oil Pressure
515-0001	1	*Key, Crankgear (#3)	160-1205	1	Breaker Box Assembly (See Catalog 927-0252 For Breakdown of Parts)
515-0006	1	*Key, Woodruff (7/8 X 1/4")	150-0678	1	Clip, Sensitivity - Governor
515-0094	2	*Key, Woodruff (#6)	518-0006	1	Clip, Rod End
105-0140	1	Camshaft (Includes Center Pin)	150-0630	1	Governor Linkage
112-0170	2	Piston and Pin (Includes Retaining Rings)	154-0356	1	Manifold, Intake
113-0089	2	Ring Set, Piston	150-1009	1	Stud, Governor
114-0145	4	Bearing, Connecting Rod	150-0098	1	Spring, Governor
110-1037	2	Valve, Intake	502-0238	2	Connector, Hose
120-0439	1	Cup, Oil Pump Intake (Includes Cup, Screen & Pipe)	503-0833	1	Hose, Outlet Crossover
102-0824	1	Base, Oil	142-0653	1	Carburetor, Gasoline (Includes Mounting Gasket 141-0078) (Includes Parts Marked °)
520-0119	4	Stud, Oil Base	142-0368	1	°Shaft, Throttle
104-0091	4	Nut, Hex-Oil Base Stud (Special)	142-0369	1	°Fly, Throttle
505-0247	2	Plug, Oil Drain	148-0017	2	°Gasket (1-Float Valve Seat 1-Main Adjusting Needle)
518-0321	1	Spray-A-Gasket (Apply to Metal Surface In Contact With Oil-Base Gasket)	142-0606	1	°Gasket, Throttle Body to Bowl
103-0395	1	Gearcase Assembly, Complete (Includes Parts Marked X)	142-0032	1	°Gasket, Nozzle
150-1315	1	X Arm and Shaft, Governor	142-0282	1	°Spring, Idle Needle
509-0105	1	X Seal, Oil (2" OD) Single Lip	142-0192	1	°Shaft, Choke
509-0126	1	X Seal, Oil (2.004" OD)	142-0055	1	°Fly, Choke
510-0008	1	X Bearing, Needle (See Catalog 927-0252 for Balance of Breakdown Parts)	142-0361	1	°Float and Lever Assembly
510-0019	1	Bearing, Ball-Gear Cover	142-0039	1	°Shaft, Float
509-0013	1	Oil Seal, Front	142-0040	1	°Needle, Idle
150-1577	1	Bracket, Governor Spring	142-0041	1	°Needle, Main Adjust
110-2767	1	Head, Cylinder - RH	142-0042	1	°Needle Assembly, Adjust
110-2768	1	Head, Cylinder - LH	142-0206	1	°Packing, Main Adjusting Needle
123-1348	1	Cap and Indicator, Oil Fill	142-0285	1	°Nozzle Assembly
123-1328	1	Tube, Oil Fill	142-0588	1	°Nut, Jet and Nozzle Retaining
123-0092	1	Gasket, Oil Fill Tube	142-0045	1	°Retainer, Main Adjust Needle Packing
122-0438	1	Cover, Oil Filter Pad	142-0046	1	°Retainer, Main Adjusting Needle
503-0761	1	Hose, Breather	142-0343	2	°Bushing, Throttle Shaft
			142-0459	1	°Valve and Seat Assembly
			142-0589	1	Repair Kit, Carburetor
			142-0033	1	Gasket Kit, Carburetor

11/4/82

1 1

SPECIAL PARTS LIST FOR MODEL RCCK-MS SPEC 3619A  
 FOR STANDARD PARTS REFER TO CATALOG 927-0252 KEY NO.         
 OPTIONAL GROUPS IN CATALOG ARE LISTED BY GROUP NO. BELOW WHEN USED.

PART NO.	QTY.	DESCRIPTION	PART NO.	QTY.	DESCRIPTION
Low Oil Pressure Cut Off High Water Temperature Cut Off 20 AMP Flywheel Alternator - Option 2 Air Cleaner - Option 5 Variable Speed Governor Control - Side Pull - Option 7 Front Pull Choke Adapter - Option 8 Mounted Water Pump - Option 9					
503-0685	2	Clamp, Hose (7/32 to 5/8")			
503-0325	1	Hose, Water Pump (7/16 ID X 10")			
502-0075	2	Elbow, Street - 90°			

SPECIAL PARTS LIST FOR MODEL RCCK-MS SPEC 3627A  
 FOR STANDARD PARTS REFER TO CATALOG 927-0252 KEY NO.         
 OPTIONAL GROUPS IN CATALOG ARE LISTED BY GROUP NO. BELOW WHEN USED.

PART NO.	QTY.	DESCRIPTION	PART NO.	QTY.	DESCRIPTION
Sold To: Thermo King			503-0770	1	Clamp, Breather Hose
110-2556	1	Block Assembly, Cylinder (Includes Breather Tube 123-0953)(See Catalog 927-0252 for Parts Breakdown of Cylinder Block Assembly)	503-0857	1	Hose, Breather
104-1293	1	Crankshaft (Includes Parts Marked *)	309-0064	1	Switch, Low Oil Pressure
515-0001	1	*Key, Crank Gear (#3)	160-1205	1	Breaker Box Assembly (See Catalog 927-0252 for Breakdown of Parts)
515-0006	1	*Key, Woodruff (7/8 x 1/4")	148-0798	1	Carburetor, Propane Note: When ordering as a replacement, order mounting gasket 141-0281 also.
515-0094	2	*Key, Woodruff (#6)	145-0398	1	Adaptor, Carburetor Inlet
105-0140	1	Camshaft (Includes Center Pin)	150-0678	1	Clip, Sensitivity-Governor
112-0170	2	Piston and Pin (Includes Retaining Rings)	150-1616	1	Rod, Governor
113-0089	2	Ring Set, Piston	150-1577	1	Bracket, Governor Spring
114-0145	4	Bearing, Connecting Rod	150-1009	1	Stud, Governor
110-1037	2	Valve, Intake	150-0098	1	Spring, Governor
110-0880	2	Valve, Exhaust	502-0238	2	Connector, Hose
110-0893	4	Retainer, Valve Spring	503-0833	1	Hose, Outlet Crossover (5/8" ID x 24")
120-0439	1	Cup, Oil Pump Intake (Includes Cup, Screen & Pipe)			
102-0824	1	Base, Oil (8 Quart)			
520-0119	4	Stud, Oil Base			
104-0091	4	Nut, Hex-Oil Base Stud (Special)			
505-0247	2	Plug, Oil Drain			
518-0321	1	Spray-a-Gasket (Apply to Metal Surface in Contact with Oil Base Gasket)			
103-0282	1	Gearcase Assembly, Complete (Includes Parts Marked x)			
150-0620	1	xYoke, Governor			
150-0377	1	xArm and Shaft, Governor			
510-0008	1	xBearing, Needle (See Catalog 927-0252 for Balance of Break- down Parts)			
510-0019	1	Bearing, Gear Cover			
509-0013	1	Oil Seal, Front			
110-2767	1	Head, Cylinder (R.H.)			
110-2768	1	Head, Cylinder (L.H.)			
123-1348	1	Cap and Indicator, Oil Fill			
123-1328	1	Tube, Oil Fill			
123-0092	1	Gasket, Oil Fill Tube			
122-0438	1	Cover, Oil Filter Pad			

SPECIAL PARTS LIST FOR **MODEL** RCCK-MS **SPEC** 3642A  
 FOR STANDARD PARTS REFER TO **CATALOG** 927-0252 **KEY NO.**         
 OPTIONAL GROUPS IN CATALOG ARE LISTED BY GROUP NO. BELOW WHEN USED.

PART NO.	QTY.	DESCRIPTION	PART NO.	QTY.	DESCRIPTION
Low Oil Pressure Cut Off High Water Temperature Cut Off 20 AMP Flywheel Alternator - Option 2 Air Cleaner - Option 5 Variable Speed Governor Control - Option 7 Front Pull Choke Adapter - Option 8 Mounted Water Pump - Option 9					
503-0685	2	Clamp, Hose (7/32 to 5/8")			
503-0325	1	Hose, Water Pump (7/16 ID X 10")			
502-0075	2	Elbow, Street - 90°			



SPECIAL PARTS LIST FOR MODEL RCCK-MS SPEC 3723A  
 FOR STANDARD PARTS REFER TO CATALOG 927-0252 KEY NO.         
 OPTIONAL GROUPS IN CATALOG ARE LISTED BY GROUP NO. BELOW WHEN USED.

PART NO.	QTY.	DESCRIPTION	PART NO.	QTY.	DESCRIPTION
110-2556	1	Block Assembly, Cylinder (Includes Breather Tube 123-0953)(See Catalog 927-0252 for Parts Breakdown of Cylinder Block Assembly).	142-0653	1	Carburetor, Gasoline (Includes Mounting Gasket 141-0078) (Includes Parts Marked °)
104-1293	1	Crankshaft (Includes Parts Marked *)	142-0368	1	°Shaft, Throttle
515-0001	1	*Key, Crank Gear (#3)	142-0369	1	°Fly, Throttle
515-0006	1	*Key, Woodruff (7/8 x 1/4")	148-0017	2	°Gasket (1-Float Valve Seat 1-Main Adjusting Needle)
515-0094	2	*Key, Woodruff (#6)	142-0606	1	°Gasket, Throttle Body to Bowl
105-0140	1	Camshaft (Includes Center Pin)	142-0032	1	°Gasket, Nozzle
120-0839	1	Pump Assembly, Oil	142-0282	1	°Spring, Idle Needle
112-0170	2	Piston and Pin (Includes Retaining Rings)	142-0192	1	°Shaft, Choke
113-0089	2	Ring Set, Piston	142-0055	1	°Fly, Choke
114-0145	4	Bearing, Connecting Rod	142-0361	1	°Float and Lever Assembly
110-1037	2	Valve, Intake	142-0039	1	°Shaft, Float
110-0880	2	Valve, Exhaust	142-0040	1	°Needle, Idle
120-0439	1	Cup, Oil Pump Intake (Includes Cup, Screen & Pipe)	142-0041	1	°Needle, Main Adjust
102-0824	1	Base, Oil	142-0042	1	°Needle Assembly, Adjust
520-0119	4	Stud, Oil Base	142-0206	1	°Packing, Main Adjusting Needle
104-0091	4	Nut, Hex-Oil Base Stud (Special)	142-0285	1	°Nozzle Assembly
505-0247	2	Plug, Oil Drain	142-0588	1	°Nut, Jet and Nozzle Retaining
518-0321	1	Spray-A-Gasket (Apply to Metal Surface in Contact with Oil Base Gasket)	142-0045	1	°Retainer, Main Adjust Needle Packing
103-0282	1	Gear Case Assembly, Complete (Includes parts Marked x)	142-0046	1	°Retainer, Main Adjusting Needle
150-0620	1	xYoke, Governor	142-0343	2	°Bushing, Throttle Shaft
150-0377	1	xArm and Shaft, Governor	142-0459	1	°Valve and Seat Assembly
510-0008	1	xBearing, Needle (See Catalog 927-0252 for Balance of Break- down Parts)	142-0589	1	Repair Kit, Carburetor
510-0019	1	Bearing, Gear Cover	142-0033	1	Gasket Kit, Carburetor
509-0013	1	Oil Seal, Front	150-1009	1	Stud, Governor Adjust
150-1577	1	Bracket, Governor Spring	150-0098	1	Spring, Governor
110-2767	1	Head, Cylinder (R.H.)	502-0238	2	Connector, Hose
110-2768	1	Head, Cylinder (L.H.)	503-0833	1	Hose, Outlet Crossover (5/8" ID x 24")
123-1348	1	Cap and Indicator, Oil Fill			
123-1328	1	Tube, Oil Fill			
123-0092	1	Gasket, Oil Fill Tube			
122-0438	1	Cover, Oil Filter Pad			
503-0761	1	Hose, Breather Cap			
503-0769	2	Clamp, Breather Hose			
309-0064	1	Switch, Low Oil Pressure			
160-1205	1	Breaker Box Assembly (See Catalog 927-0252 for Break- down of Parts)			
150-0678	1	Clip, Sensitivity-Governor			

SPECIAL PARTS LIST FOR MODEL RUCK-MS SPEC 3/24A  
 FOR STANDARD PARTS REFER TO CATALOG 927-0252 KEY NO.         
 OPTIONAL GROUPS IN CATALOG ARE LISTED BY GROUP NO. BELOW WHEN USED.

PART NO.	QTY.	DESCRIPTION	PART NO.	QTY.	DESCRIPTION
110-2556	1	Block Assembly, Cylinder (Includes Breather Tube 123-0953) (See Catalog 927-0252 for Parts Breakdown of Cylinder Block Assembly)	503-0833	1	Hose, Outlet Crossover (5/8" ID x 24")
104-1293	1	Crankshaft (Includes Parts Marked *)	148-0798	1	Carburetor, Propane Note: When ordering as a replacement, order mounting gasket 141-0281 also.
515-0001	1	*Key Crank Gear (#3)	145-0398	1	Adaptor, Carburetor Air Inlet
515-0006	1	*Key, Woodruff (7/8 x 1/4")	502-0238	2	Connector, Hose
515-0094	2	*Key, Woodruff (#6)	150-1577	1	Bracket, Governor Spring
105-0140	1	Camshaft (Includes Center Pin)	150-1009	1	Stud, Governor
120-0839	1	Pump, Oil	150-0098	1	Spring, Governor
112-0170	2	Piston and Pin (Includes Retain- ing Rings)	150-0678	1	Clip, Sensitivity-Governor
113-0089	2	Ring Set, Piston	150-1616	1	Rod, Governor
114-0145	4	Bearing, Connecting Rod			
110-1037	2	Valve, Intake			
110-0880	2	Valve, Exhaust			
110-0893	4	Retainer, Valve Spring			
120-0439	1	Cup, Oil Pump Intake (Includes Cup, Screen & Pipe)			
102-0824	1	Base, Oil			
520-0119	4	Stud, Oil Base			
104-0091	4	Nut, Hex-Oil Base Stud (Special)			
505-0247	2	Plug, Oil Drain			
518-0321	1	Spray-a-Gasket (Apply to Metal Surface in Contact with Oil Base Gasket)			
103-0282	1	Gearcase Assembly, Complete (Includes Parts Marked x)			
150-0620	2	xYoke, Governor			
150-0377	1	xArm and Shaft, Governor			
510-0008	1	xBearing, Needle (See Catalog 927-0252 for Balance of Break- down Parts)			
510-0019	1	Bearing, Gear Cover			
509-0013	1	Oil Seal, Front			
149-0003	1	Gasket, Fuel Pump			
110-2767	1	Head, Cylinder (R.H.)			
110-2768	1	Head, Cylinder (L.H.)			
123-1348	1	Cap and Indicator, Oil Fill			
123-1328	1	Tube, Oil Fill			
123-0092	1	Gasket, Oil Fill Tube			
122-0438	1	Cover, Oil Filter, Pad			
503-0770	1	Clamp, Breather Hose			
503-0857	1	Hose, Breather			
309-0064	1	Switch, Low Oil Pressure			
160-1205	1	Breaker Box Assembly (See Catalog 927-0252 for Breakdown of Parts)			

SPECIAL PARTS LIST FOR **MODEL** RCCK-MS **SPEC** 3743A

FOR STANDARD PARTS REFER TO **CATALOG** 927-0252 **KEY NO.** \_\_\_\_\_

**OPTIONAL GROUPS IN CATALOG ARE LISTED BY GROUP NO. BELOW WHEN USED.**

PART NO.	QTY.	DESCRIPTION	PART NO.	QTY.	DESCRIPTION
		15 AMP Flywheel Alternator - Option 3			
		Variable Speed Governor Control - Option 7			
		Front Pull Choke Adapter - Option 8			
		Air Cleaner - Option 5			
104-1321	1	Crankshaft (Includes Parts Marked *)			
515-0001	1	*Key, Woodruff			
515-0098	1	*Key, Flywheel Mounting			
150-1725	1	Bracket, Governor Mounting			

SPECIAL PARTS LIST FOR MODEL RCCK-MS SPEC 3779A

FOR STANDARD PARTS REFER TO CATALOG 927-0252 KEY NO.       

OPTIONAL GROUPS IN CATALOG ARE LISTED BY GROUP NO. BELOW WHEN USED.

PART NO.	QTY.	DESCRIPTION	PART NO.	QTY.	DESCRIPTION
High Water Temperature Cut Off					
20 AMP Flywheel Alternator - Option 2					
Variable Speed Governor Control - Option 7					
505-0618	1	Cap, Pipe (1 1/2")			
140-1074	1	Air Cleaner Assembly			
		(Includes Parts Marked *)			
140-1061	1	*Cover, Air Cleaner - Inlet			
140-1066	1	*Cover, Air Cleaner - Outlet			
140-1067	1	*Bracket, Air Cleaner			
140-1071	1	*Element, Air Cleaner			
140-1073	1	*Clamp Assembly, Air Cleaner			
140-1075	1	*Elbow Assembly, Air Inlet			
503-0311	1	*Clamp, Hose			
150-1725	1	Bracket, Governor Mounting			
150-1538	1	Bracket, Governor			

SPECIAL PARTS LIST FOR **MODEL** RCCK-MS **SPEC** 3870A  
 FOR STANDARD PARTS REFER TO **CATALOG** 927-0252 **KEY NO.**         
 OPTIONAL GROUPS IN CATALOG ARE LISTED BY GROUP NO. BELOW WHEN USED.

PART NO.	QTY.	DESCRIPTION	PART NO.	QTY.	DESCRIPTION
Low Oil Pressure Cut Off High Water Temperature Cut Off 15 AMP Flywheel Alternator - Option 3 Variable Speed Governor Control - Option 7 Front Pull Choke Adapter - Option 8 Mounted Water Pump - Option 9					
110-2556	1	Block Assembly, Cylinder (Includes Breather Tube 123-0953) (See Catalog 927-0252 for Parts Breakdown of Cylinder Block Assembly)			
510-0015	10	Ball, Fly-Governor			
110-1037	2	Valve, Intake			
503-0325	1	Hose, Breather (7/16 X 9/16 X 10")			

## SPECIAL PARTS LIST FOR MODEL

RCCK-MS

SPEC

3881A

FOR STANDARD PARTS REFER TO CATALOG

927-0252

KEY NO.

OPTIONAL GROUPS IN CATALOG ARE LISTED BY GROUP NO. BELOW WHEN USED.

PART NO.	QTY.	DESCRIPTION	PART NO.	QTY.	DESCRIPTION
Low Oil Pressure Cut Off					
High Water Temperature Cut Off					
15 AMP Flywheel Alternator - Option 3					
505-0101	1	Nipple, Close-Inlet Crossover (3/8 X 1")			
110-0893	4	Retainer, Valve Spring (Washer)			
103-0480	1	Gear Case Assembly, Complete (Includes Parts Marked *)			
150-1422	1	*Arm and Shaft, Governor (See Catalog 927-0252 for Balance of Breakdown Parts)			
110-1478	1	Head, Cylinder - RH			
110-1479	1	Head, Cylinder - LH			
150-1073	1	Arm, Governor - Front Pull			
154-0951	1	Manifold, Intake			
141-0890	1	Carburetor - Gas (Includes Mounting Gasket 141-0281) (Includes Parts Marked X)			
141-0733	1	X Spring, Main Gas Needle			
141-0734	1	X Needle, Main Gas Adjusting			
141-0736	1	X Nut, Bowl			
141-0737	1	X Plug, Pipe (1/8")			
141-0738	1	X Screw (Special)			
141-0739	1	X Washer (Special)			
141-0708	1	X Bowl, Fuel			
141-0698	2	X Screw and Washer - Choke and Throttle Plate Mounting			
141-0706	1	X Plate, Throttle			
141-0705	1	X Retainer, Seal			
141-0661	1	X Seal, Rubber			
141-0701	1	X Gasket, Bowl to Body			
141-0700	1	X Screw, Throttle Stop (Special)			
141-0711	1	X Spring, Throttle Stop			
141-0713	1	X Needle, Idle Adjust			
141-0710	1	X Spring, Idle Needle			
141-0077	1	X Washer, Main Jet Assembly			
141-0709	1	X Shaft and Lever, Throttle			
141-0747	1	Repair Kit, Carburetor			
141-0748	1	Gasket Kit, Carburetor			

SPECIAL PARTS LIST FOR **MODEL** RCCK-MS **SPEC** 3979A  
 FOR STANDARD PARTS REFER TO **CATALOG** 927-0252 **KEY NO.**         
 OPTIONAL GROUPS IN CATALOG ARE LISTED BY GROUP NO. BELOW WHEN USED.

PART NO.	QTY.	DESCRIPTION	PART NO.	QTY.	DESCRIPTION
----------	------	-------------	----------	------	-------------

Sold To: ESCO  
 Low Oil Pressure Cut Off  
 High Water Temperature Cut Off  
 20 AMP Flywheel Alternator - Option 2  
 Air Cleaner - Option 5  
 Variable Speed Governor Control - Option 7  
 Mounted Water Pump - Option 9

167-0188	2	Clip, Support (Low Left Gearcase and Oil Fill Tube)
153-0514	1	Clamp, Choke Cable
153-0548	1	Bracket, Choke - Manual (Front Pull)
150-1538	1	Bracket, Governor
150-1725	1	Bracket, Governor Mounting
518-0176	1	Clip, Cable
154-2092	1	Manifold, Exhaust - Water Cooled
502-0080	1	Plug, Pipe - Hex Head (1/8") Water Cooled Manifold
502-0297	2	Bushing, Reducer - Water Cooled Manifold (3/8 X 1/2")
505-0054	1	Plug, Square Head - Water Cooled Manifold (1/4")
503-0638	1	Hose, Water Cooled Manifold (1/2 X 4 3/4")
503-0468	1	Hose - Inlet Crossover
503-0325	1	Hose, Inlet (7/16 ID X 10")
515-0249	1	Key, Pulley - Water Pump (3/16 X 3/16 X 1")
332-1356	1	Clamp, Loop (RH Low Gearcase)

SPECIAL PARTS LIST FOR MODEL RCCK-MF SPEC 4026A  
 FOR STANDARD PARTS REFER TO CATALOG 927-0252 KEY NO.         
 OPTIONAL GROUPS IN CATALOG ARE LISTED BY GROUP NO. BELOW WHEN USED.

PART NO.	QTY.	DESCRIPTION	PART NO.	QTY.	DESCRIPTION
Low Oil Pressure Cut Off			141-0706	1	°Plate, Throttle
High Water Temperature Cut Off			141-0705	1	°Retainer, Seal
15 Amp Flywheel Alternator-Option 3			141-0661	1	°Seal, Rubber
Front Pull Choke Adapter-Option 8			141-0830	1	°Valve Seat Assembly, Fuel
Mounted Water Pump-Option 9			141-0811	1	°Washer, Fuel Valve Seat
			141-0703	1	°Shaft, Float
110-2728	1	Block Assembly, Cylinder (Includes Parts Marked *)	141-0702	1	°Float Assembly
110-1000	2	*Insert, Intake Valve	141-0701	1	°Gasket, Bowl to Body
123-0953	1	*Tube, Breather (Note: For Balance of Cylinder Block Break- down See Catalog 927-0252 Parts Marked *)	141-0700	1	°Screw, Throttle Stop
104-1323	1	Crankshaft (Includes Parts Marked x)	141-0711	1	°Spring, Throttle Stop
515-0001	1	xKey, Woodruff	141-0713	2	°Needle, Idle Adjusting
515-0098	1	xKey, Flywheel Mounting	141-0710	2	°Spring, Idle Needle
510-0015	10	Ball, Governor	141-0077	1	°Washer, Main Jet Assembly
110-1037	2	Valve, Intake	141-0712	1	°Jet Assembly, Main (Adjustable)
110-0893	4	Retainer, Valve Spring (Washer)	141-0742	1	°Shaft Choke
120-0759	1	Cup, Oil Pump Intake (Includes Cup, Screen & Pipe)	141-0699	1	°Washer
102-0949	1	Base, Oil-Side Fill (8 quarts)	141-0697	1	°Seal, Felt
503-0694	1	Hose, Fuel Pump Inlet (1/4" ID x 7")	141-0203	1	°Retainer, Felt Seal
123-1356	1	Cap and Indicator, Oil Fill	141-0709	1	°Shaft and Lever, Throttle
123-0255	1	Tube, Oil Fill	141-0733	1	°Spring, Main Gas Needle
309-0113	1	Switch, Oil Pressure	141-0734	1	°Needle, Main Gas Adjusting
332-1356	1	Clamp, Loop (Low R.H. Gear Case)	141-0799	1	°Spring, Float
503-0468	1	hose, Inlet Crossover (1/2" ID x 13 1/2" Long)	141-0747	1	Kit, Carburetor Repair
190-0258	1	Clutch Assembly, Power Take Off	141-0748	1	Kit, Carburetor Gasket
190-0591	1	Flange, Drive-Clutch			
190-0592	1	Housing, Clutch			
503-0325	1	Hose, Inlet-Water Pump (7/16" ID x 10")			
515-0249	1	Key (3/16 x 3/16 x 1")			
141-0887	1	Carburetor, Gas-Gasoline Manual Choke (Includes Mounting Gasket) (Includes Parts Marked °)			
141-0281	1	°Gasket, Carburetor Flange			
141-0708	1	°Bowl, Fuel			
141-0741	1	°Plate, Choke			
141-0698	4	°Screw and Washer, Choke and Throttle Plate Mounting			