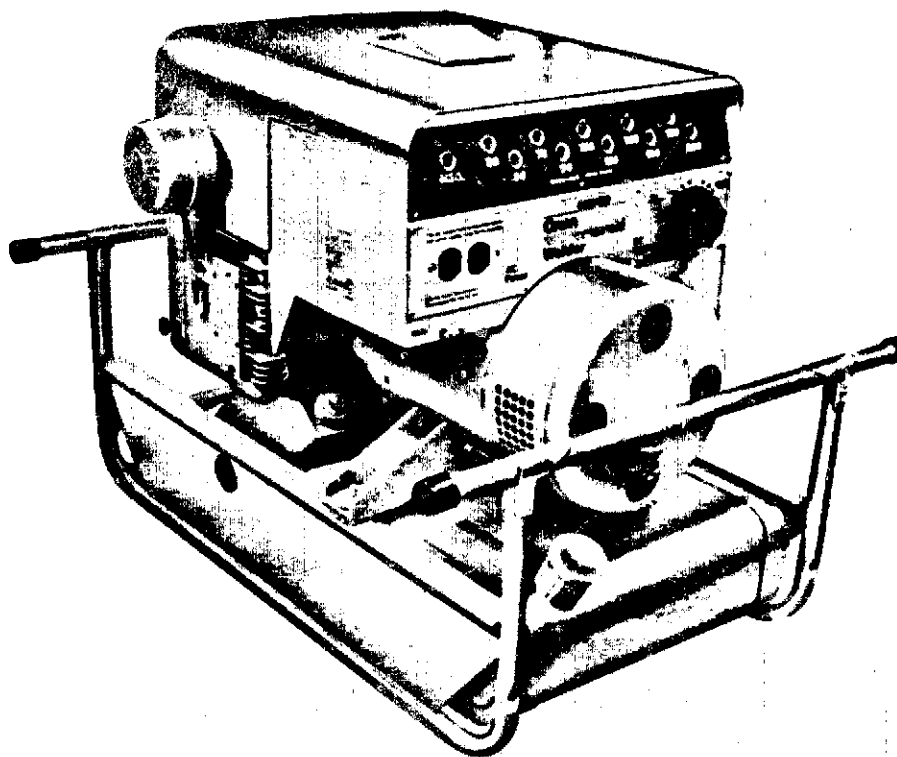


The following catalog
has gaps in its page
numbers, or doesn't
have any numbers.
We have chosen to
leave the page
numbering in the
order that Acrobat
assigns it.

Parts Manual

CCK Welder



7-0255
PEC F-T)
81
ited in U.S.A.

GENERAL INFORMATION

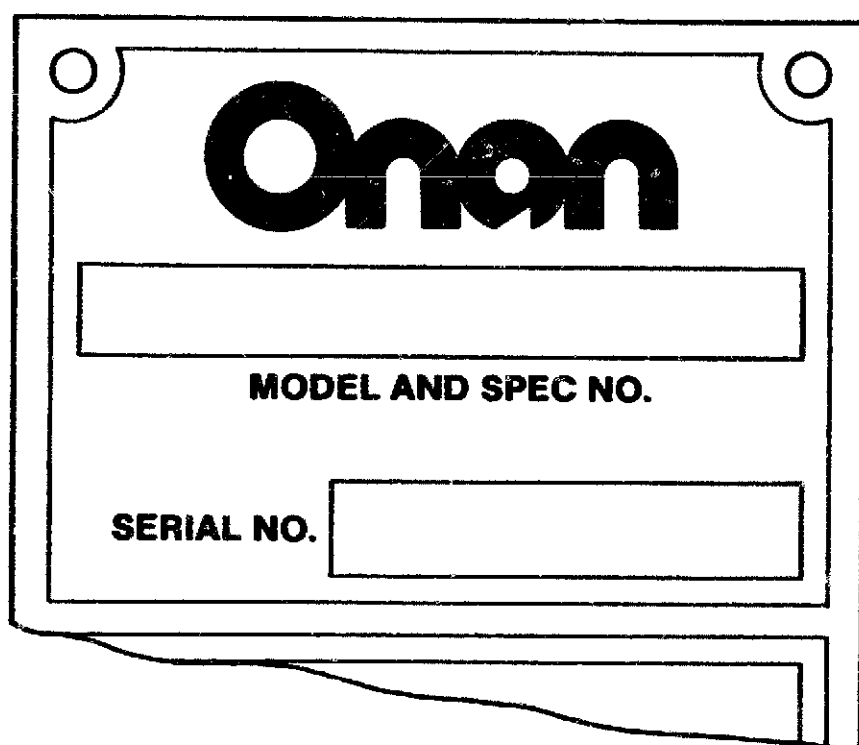
INSTRUCTIONS FOR ORDERING REPAIR PARTS

For parts or service, contact the dealer from whom you purchased this equipment or refer to your Nearest Authorized Onan Parts and Service Center.

To avoid errors or delay in filling your parts order, please furnish all information requested.

Always refer to the nameplate on your unit.

1. Always give the MODEL, SPEC NO. and SERIAL NO.



The diagram shows a rectangular nameplate with rounded corners and two circular mounting holes at the top. The Onan logo is prominently displayed at the top center. Below the logo is a large rectangular box labeled "MODEL AND SPEC NO.". Further down, the text "SERIAL NO." is followed by a smaller rectangular box for the serial number. The bottom of the nameplate is slightly irregular, suggesting it might be a cutout from a larger sheet.

M-1149

For handy reference, insert "YOUR" nameplate information in the spaces above.

2. Do not order by reference number; always use part number and description.
3. Give the part number, description and quantity needed of each item. If an older part cannot be identified, return the part prepaid to your dealer or nearest Onan Parts and Service Center. Print your name and address plainly on the package. Write a letter to the same address stating the reason for returning the part.
4. State definite shipping instructions. Any claim for loss or damage to your unit in transit should be filed promptly against the transportation company making the delivery. Shipments are complete unless the packing list indicates items are back ordered.

Prices are purposely omitted from this Parts Catalog due to the confusion resulting from fluctuating costs, import duties, sales taxes, exchange rates, etc.

For current parts prices, consult your Onan Dealer, Distributor or Parts and Service Center.

"En esta lista de partes los precios se omiten de proposito, ya que bastante confusion resulto de fluctuaciones de los precios, derechos aduanales, impuestos de venta, cambios extrajeros, etc."

Consiga los precios vigentes de su distribuidor de productos "ONAN."

INDEX

LOCATION

WELDER SET DATA

Base, Oil	A8
Block, Cylinder	A6,A7
Camshaft	A11
Carburetor Parts	A14
Carrying Frame	B10
Control	B8,B9
Crankshaft and Flywheel	A10
Fuel System	A12,A13
Gearcase	A5
Generator	B6,B7
Governor	B4
Housing, Air	B3
Ignition System	B2,B3
Piston and Rod	A9
Pump Parts, Fuel	B1
Service Kits and Miscellaneous	B11

OPTIONAL EQUIPMENT SECTION

Dolly	C2
Fuel System (LPG)	C3
Starter, Redi-Pull - Key 1	C4

INTRODUCTION

This catalog applies to the standard 200 Ampere Welders as listed below. Parts are arranged in groups of related items. Each illustrated part is identified by a reference number corresponding to the same reference number below the illustration. Parts illustrations are typical. Using the MODEL and SPEC NO. from the set nameplate, select the Parts Key No. (1, 2, etc. in the last column) that applies to your set MODEL and SPEC NO. This Parts Key No. represents parts that differ between models. Unless otherwise mentioned in the description, parts are interchangeable between models. Right and left set sides are determined by FACING the engine end (front) of the set.

WELDER DATA TABLE

★ MODEL AND SPEC NO.	ELECTRICAL DATA						TYPE	PARTS KEY NO.
	DC OUTPUT (For Welding)			AC OUTPUT, 1 Phase 2 Wire (Available continuously when not welding)				
	Amps	Volts	Duty Cycle					
6.0CCK-331P/1*	200	30	50%	3500	120	60	Manual	1
6.0CCK-332P/1*	200	30	50%	3500	240	60	Manual	1
6.0CCK-5331P/1*	200	30	50%	2500	120	50	Manual	1
6.0CCK-5332P/1*	200	30	50%	2500	240	50	Manual	1
6.0CCK-331E/1*	200	30	50%	3500	120	60	Electric	2
6.0CCK-332E/1*	200	30	50%	3500	240	60	Electric	2
6.0CCK-5331E/1*	200	30	50%	2500	120	50	Electric	2
6.0CCK-5332E/1*	200	30	50%	2500	240	50	Electric	2

* - The Specification Letter advances (A to B, B to C, etc.) with manufacturing changes.

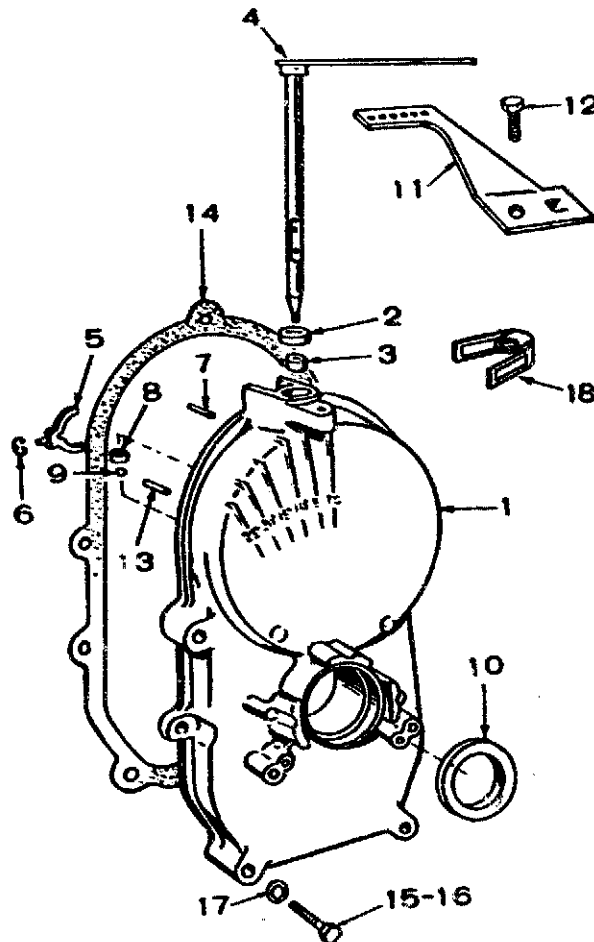
★ - New model designations shown, begin during 1969. Previous designations did not use a decimal in the KW rating. EXAMPLE: 6.0CCK was formerly 6CCK.

NOTE: Hertz is a unit of frequency equal to one cycle per second.

NOTICE!

ITEMS REFERENCED AS **OPTIONAL** INDICATE PART IS FACTORY INSTALLED AND MAY NOT BE APPLICABLE TO ALL MODELS. FOR FIELD CONVERSIONS ADDITIONAL PARTS ARE USUALLY REQUIRED.

GEARCASE

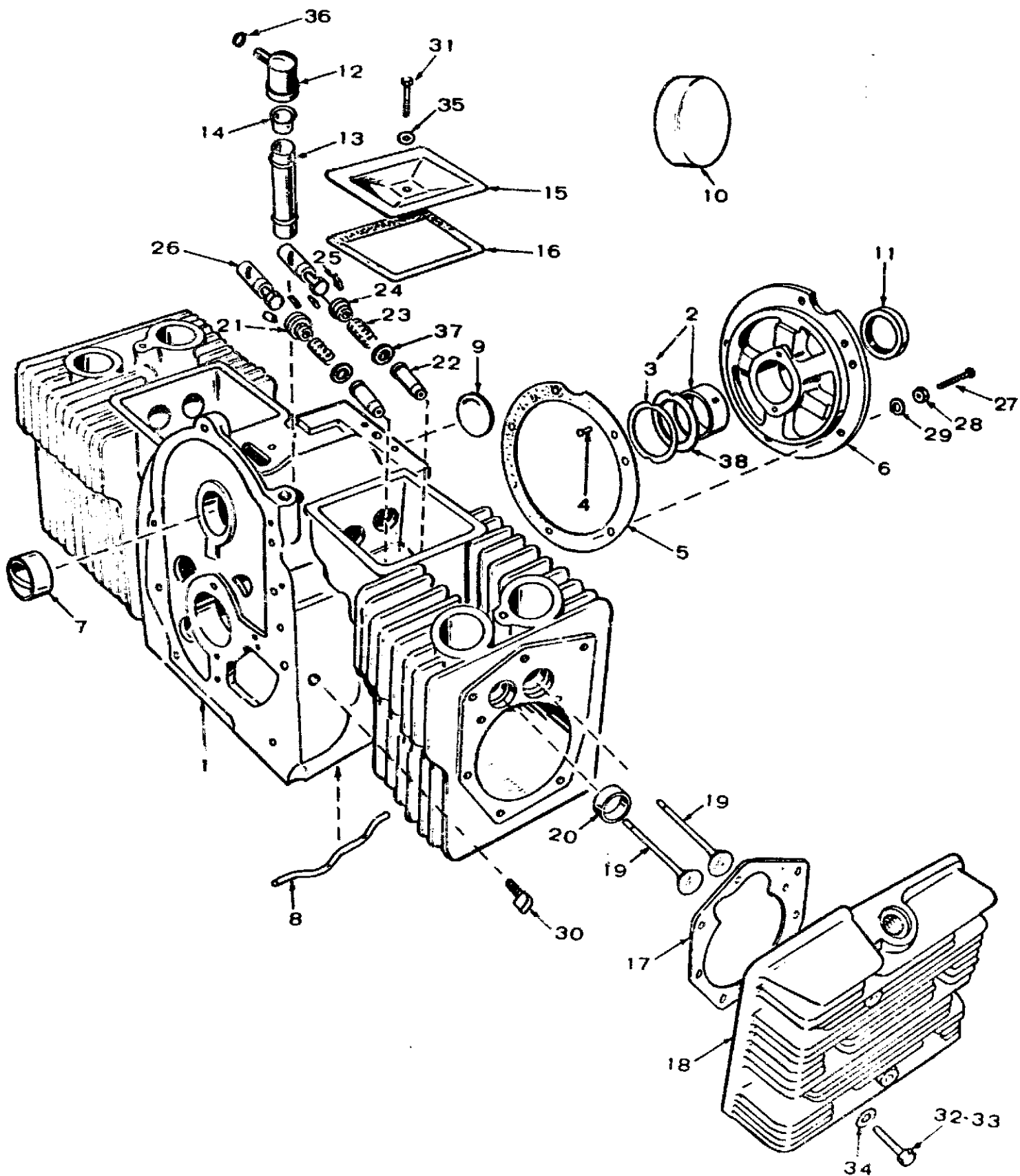


CT-1012

REF. NO.	PART NO.	QTY. USED	PART DESCRIPTION
1	103-0648	1	Gearcase Assembly (Includes Parts Marked *)
2	509-0008	1	*Seal, Governor Shaft
3	510-0013	1	*Bearing, Governor Shaft - Upper
4	150-0377	1	*Shaft and Arm, Governor
5	150-0620	1	*Yoke, Governor Shaft
6	518-0129	1	*Ring, Yoke Retainer
7	516-0130	1	*Pin, Roll Governor Cup Stop
8	510-0008	1	*Bearing, Governor Shaft - Lower
9	510-0014	1	*Bearing, Ball - Governor Shaft
10	509-0040	1	*Seal, Oil - Gear Cover
11	150-1000	1	*Extension, Governor Arm
12	815-0181	1	*Screw, Governor Arm Extension - Mtg. (10-32 x 1/2")
13	516-0141	2	*Pin, Gearcase
14	103-0011	1	Gasket, Gearcase
15	114-0022	4	Screw, Cap - Hex Head (Special)
16	800-0034	1	Screw, Cap - Hex Head (5/16-18 x 2-1/4")
17	850-0045	5	Washer, Lock - Spring (5/16")
18	150-0678	1	*Clip, Governor Sensitivity Adjustment

* Parts Included in 103-0648 Gearcase Assembly.

CYLINDER BLOCK



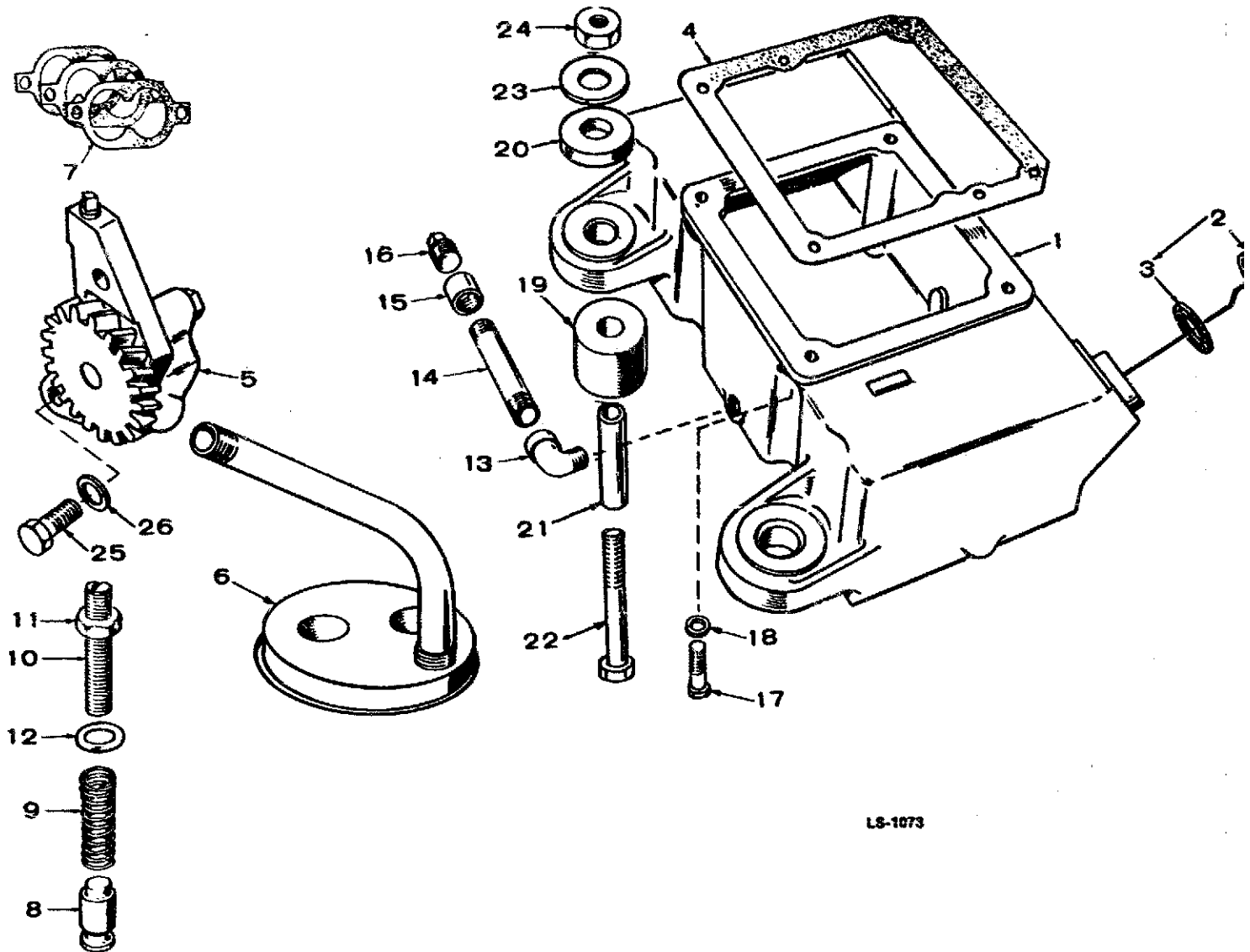
C-1071

CYLINDER BLOCK

REF. NO.	PART NO.	QTY. USED	PART DESCRIPTION	REF. NO.	PART NO.	QTY. USED	PART DESCRIPTION
1	110-0915	1	Block Assembly, Cylinder (Includes Parts Marked*)	20	*INSERT, EXHAUST VALVE SEAT		
2	BEARING KIT, CRANKSHAFT (Includes Thrust Washer and Lock Pins)			110-0872	2	Standard	
	101-0450	2	*Standard	110-872-02	2	.002" Oversize	
	101-0450-02	2	.002" Undersize	110-0872-05	2	.005" Oversize	
	101-0450-10	2	.010" Undersize	110-0872-10	2	.010" Oversize	
	101-0450-20	2	.020" Undersize	110-0872-25	2	.025" Oversize	
	101-0450-30	2	.030" Undersize	21	110-0904	2	Rotorcap, Exhaust Valve
3	104-0575	2	*Washer, Crankshaft Bearing Thrust	22	110-0902	4	Guide, Valve
4	516-0072	4	*Pin, Thrust Washer Stop	23	110-0539	4	Spring, Valve
5	101-0115	1	*Gasket Kit, Rear Bearing Plate	24	110-0893	2	Washer, Retainer - Intake
6	101-0316	1	*Plate, Rear Bearing (Less Bearing)	25	110-0639	8	Lock, Rotocap or Spring Retainer Washer
7	101-0367	2	*Bearing, Camshaft (Front & Rear)	26	TAPPET, VALVE		
8	120-0386	1	*Tube, Oil - Crankcase	115-0006	4	Standard	
9	517-0048	1	*Plug, Camshaft Expansion - Spec F and Begin Spec L	115-0006-05	4	.005" Oversize	
10	110-1283	1	*Cover, Timing Control (Spec H and L)	27	800-0512	5	*Screw, Cap - Hex Head - Rear Bearing Plate (Special)
11	509-0041	1	Seal, Oil - Rear Bearing Plate (in Kit 168-0103)	28	110-0445	5	Nut, Hex - Rear Bearing Plate Mounting (Early Models)
12	123-0293	1	Cup, Breather Tube	29	850-0045	5	Washer, Lock - Spring - Rear Bearing Plate Mtg. (5/16")
13	123-0129	1	Tube, Breather (Includes Steel Baffles)	30	520-0020	1	Elbow, Street - Oil Line to Block
14	123-0104	1	Valve, Breather Tube	31	800-0012	2	Screw, Cap - Hex Head - Valve Compartment Cover Mounting (1/4-20 x 2-1/4")
15	110-0666	2	Cover, Valve Compartment	32	110-0879	8	Screw, Cap - Hex Head - Cylinder Head Mounting (Special)
16	110-0667	2	Gasket, Valve Compartment Cover	33	114-0022	10	Screw, Cap - Hex Head - Cylinder Head Mounting (Special)
17	110-0892	2	Gasket, Cylinder Head	34	526-0122	18	Washer, Flat - Cylinder Head Mounting (11/32" ID x 23/32" OD x .1345" Thk)
18	HEAD, CYLINDER			35	526-0063	2	Washer, Copper (17/64" ID x 7/16" OD x 1/32" Thk)
	110-0890	1	Right Hand (Spec F Only)	36	503-0769	1	Clamp, Hose
	110-0891	1	Left Hand (Spec F Only)	37	110-3136	2	*Gasket, Intake Valve Guide
	110-0884	1	Right Hand (Begin Spec H) - Hi-Compression	38	104-0776	1	Shim, Crankshaft Thrust Bearing
	110-0883	1	Left Hand (Begin Spec H) - Hi-Compression				
19	VALVE						
	110-0881	2	Intake				
	110-0880	2	Exhaust				

* - Parts Included in 110-0915 Cylinder Block Assembly.

OIL BASE



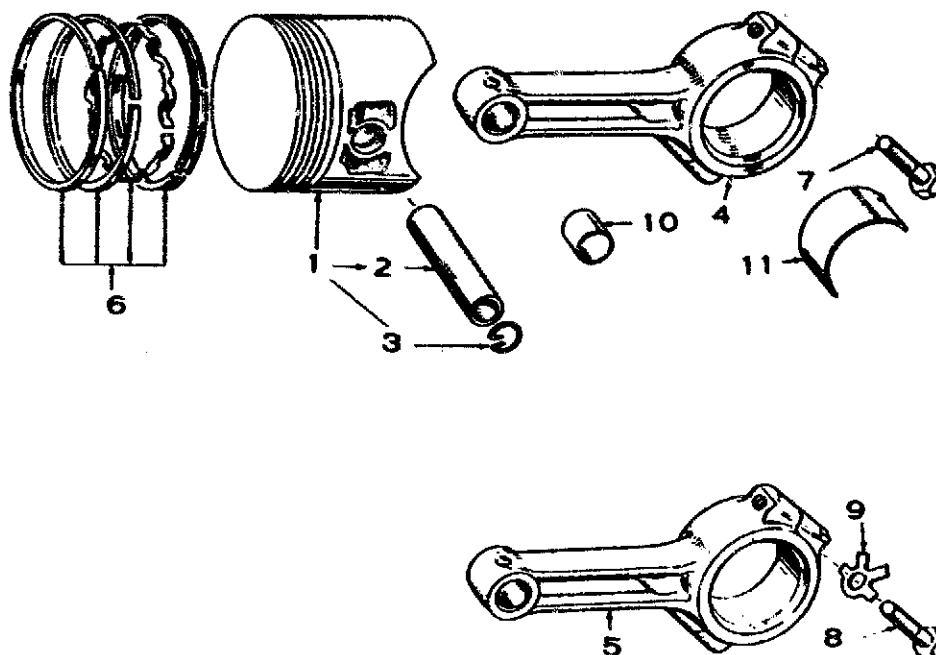
LS-1073

REF. NO.	PART NO.	QTY. USED	PART DESCRIPTION	REF. NO.	PART NO.	QTY. USED	PART DESCRIPTION
1	102-0418	1	Base, Oil	16	PLUG, OIL DRAIN		
2	123-0489	1	Cap and Indicator, Oil Fill	505-0110	1	Early Models (3/8")	
3	123-0191	1	Gasket, Oil Fill Cap	505-0056	1	Later Models (1/2")	
4	102-0158	1	Gasket, Oil Base Mounting	17	102-0455	4	Screw, Cap - Hex Head - Oil Base Mtg. (Special)
5	120-0491	1	Pump, Oil - Complete (Internal Parts not sold separately)	18	850-0050	4	Washer, Lock - Spring - Oil Base Mtg. (3/8")
6	120-0400	1	Cup, Oil Pump Intake (Includes Cup, Screen & Pipe)	19	402-0038	2	*Cushion, Mtg. - Lower - Engine End
7	120-0161	1	Gasket Kit, Oil Pump	20	402-0131	2	*Cushion, Mtg. - Upper - Engine End
8	120-0398	1	Valve, By Pass	21	402-0137	2	*Bushings, Spacer - Engine End
9	120-0140	1	Spring, By Pass Valve	22	800-0037	2	*Screw, Cushion Mtg. - Engine End (5/16-18 x 3")
10	120-0145	1	Stud, Oil By Pass Adjustment	23	526-0076	2	*Washer, Flat - Cushion Mtg. - Engine End (11/32" ID x 1-1/2" OD x 1/16" Thk)
11	868-0003	1	Nut, Hex - Jam - Oil By Pass Stud Adjustment (3/8-24)	24	870-0048	2	*Nut, Hex - Cushion Mtg. - Engine End (5/16-18)
12	526-0066	1	Washer, Flat - Copper - Oil Pressure Relief Valve Adjusting Screw (25/64" ID x 9/16" OD x 1/16" Thk)	25	800-0007	2	Screw, Cap - Hex Head - Oil Pump Mtg. - (1/4-20 x 1")
13	ELBOW, OIL DRAIN (45") - Key 2 Only			26	850-0040	2	Washer, Lock - Spring - Oil Pump Mtg. (1/4")
	505-0119	1	Early Models (3/8")		402-0226	2	Cushion Assy., Engine End Mtg. (Includes Parts Marked*)
	505-0248	1	Later Models (1/2")				
14	NIPPLE, OIL DRAIN						
	505-0240	1	Early Models (3/8" x 3-1/2")				
	505-0176	1	Later Models (1/2" x 3-1/2")				
15	COUPLING, OIL DRAIN						
	505-0028	1	Early Models (3/8")				
	505-0014	1	Later Models (1/2")				

* - Parts Included in 402-0226 Mounting Cushion Assembly - Engine End.

Redistribution or publication of this document by any means, is strictly prohibited.

PISTON AND ROD

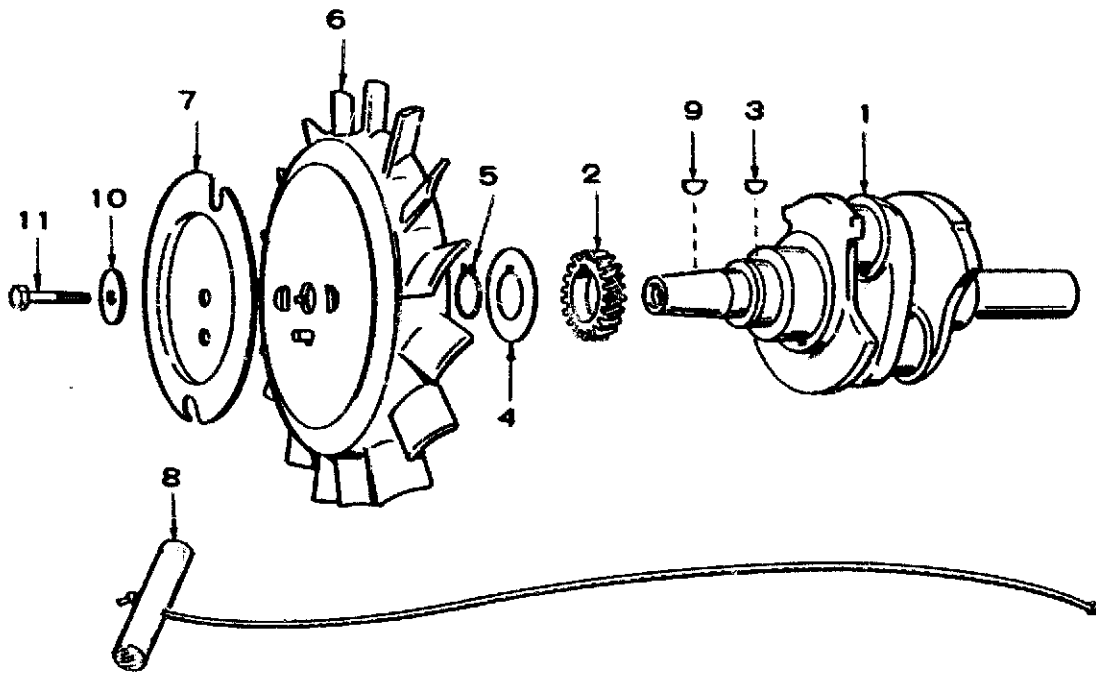


CT-1039

REF. NO.	PART NO.	QTY. USED	PART DESCRIPTION
1	PISTON AND PIN ASSEMBLY — Includes Retainer Rings		
	112-0179	2	Standard
	112-0179-05	2	.005" Oversize
	112-0179-10	2	.010" Oversize
	112-0179-20	2	.020" Oversize
	112-0179-30	2	.030" Oversize
	112-0179-40	2	.040" Oversize
2	112-0069	2	Pin, Piston
3	112-0003	4	Ring, Piston Pin Retaining
4	114-0203	2	Rod, Connecting - Includes Bushing and Place Bolts Begin Spec H
5	ROD, CONNECTING (Aluminum - Spec F Only)		
	114-0098	2	Standard
	114-0098-10	2	.010" Undersize
	114-0098-20	2	.020" Undersize
	114-0098-30	2	.030" Undersize
6	RING SET, PISTON		
	113-0088	2	Standard
	113-0088-05	2	.005" Oversize
	113-0088-10	2	.010" Oversize
	113-0088-20	2	.020" Oversize
	113-0088-30	2	.030" Oversize
	113-0088-40	2	.040" Oversize

REF. NO.	PART NO.	QTY. USED	PART DESCRIPTION
7	805-0010	4	Bolt, Place - Connecting Rod Caps - Begin Spec H (5/16-24 x 1-1/4")
8	800-0548	4	Screw, Cap - Hex Head - Connecting Rod Cap - (Spec F Only) (Special)
9	114-0059	4	Washer, Connecting Rod Cap (Spec F Only) (Special)
10	114-0036	2	Bushing, Piston Pin - Begin Spec H
11	BEARING HALF, CONNECTING ROD - BEGIN SPEC H		
	114-0145	4	Standard
	114-0145-02	4	.002" Undersize
	114-0145-10	4	.010" Undersize
	114-0145-20	4	.020" Undersize
	114-0145-30	4	.030" Undersize

CRANKSHAFT AND FLYWHEEL



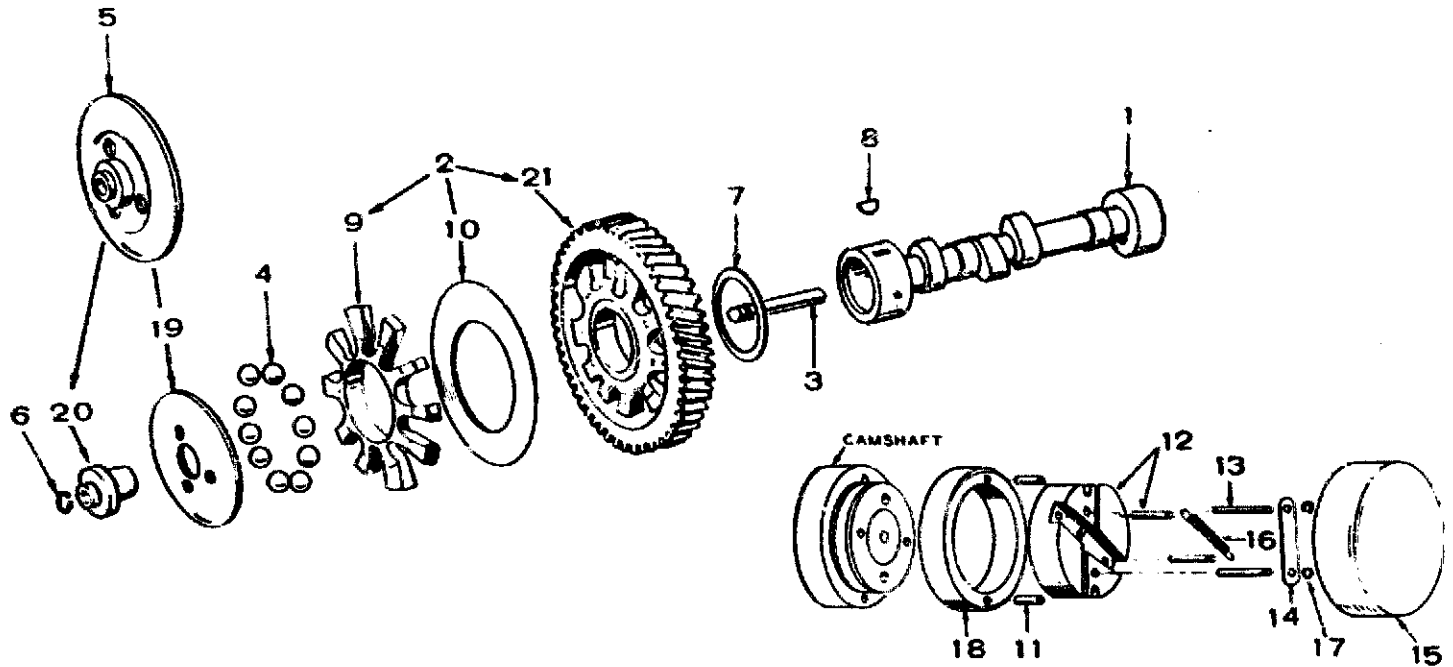
CT-1022

REF. NO.	PART NO.	QTY. USED	PART DESCRIPTION -
1	104-1323	1	Crankshaft (Includes Parts Marked *)
2	104-0032	1	Gear, Crankshaft
3	515-0001	1	*Key, Crankshaft
4	104-0043	1	Washer, Crankshaft Gear Retainer
5	518-0014	1	Lock, Crankshaft Gear Washer
6	FLYWHEEL, MAGNETO - LESS ROPE SHEAVE		
	160-0650	1	†Spec F only (Includes Magnets: 2 160-0274 2 160-0276)
	160-0761	1	†Spec H and J (Includes Magnets: 2 160-0748 2 160-0751)
	160-0937	1	†Begin Spec L (Includes Magnets: 2 160-0751 2 160-0968)
7	192-0308	1	Sheave, Rope
8	192-0083	1	Rope, Starting
9	515-0227	1	Key, Flywheel Mounting
10	526-0017	1	Washer, Flat - Flywheel Mtg. (15/32" ID x 1-1/4" OD x 1/4" Thk)
11	104-0170	1	Screw, Cap - Hex Head - Flywheel Mtg. (Special)
12	515-0098	1	*Key (Not Shown)

* - Parts Included in 104-1323 Crankshaft Kit.

† - Note: If screws protrude through Magnets, use 526-0049 Brass Washer under Screw Head to shim out -

CAMSHAFT



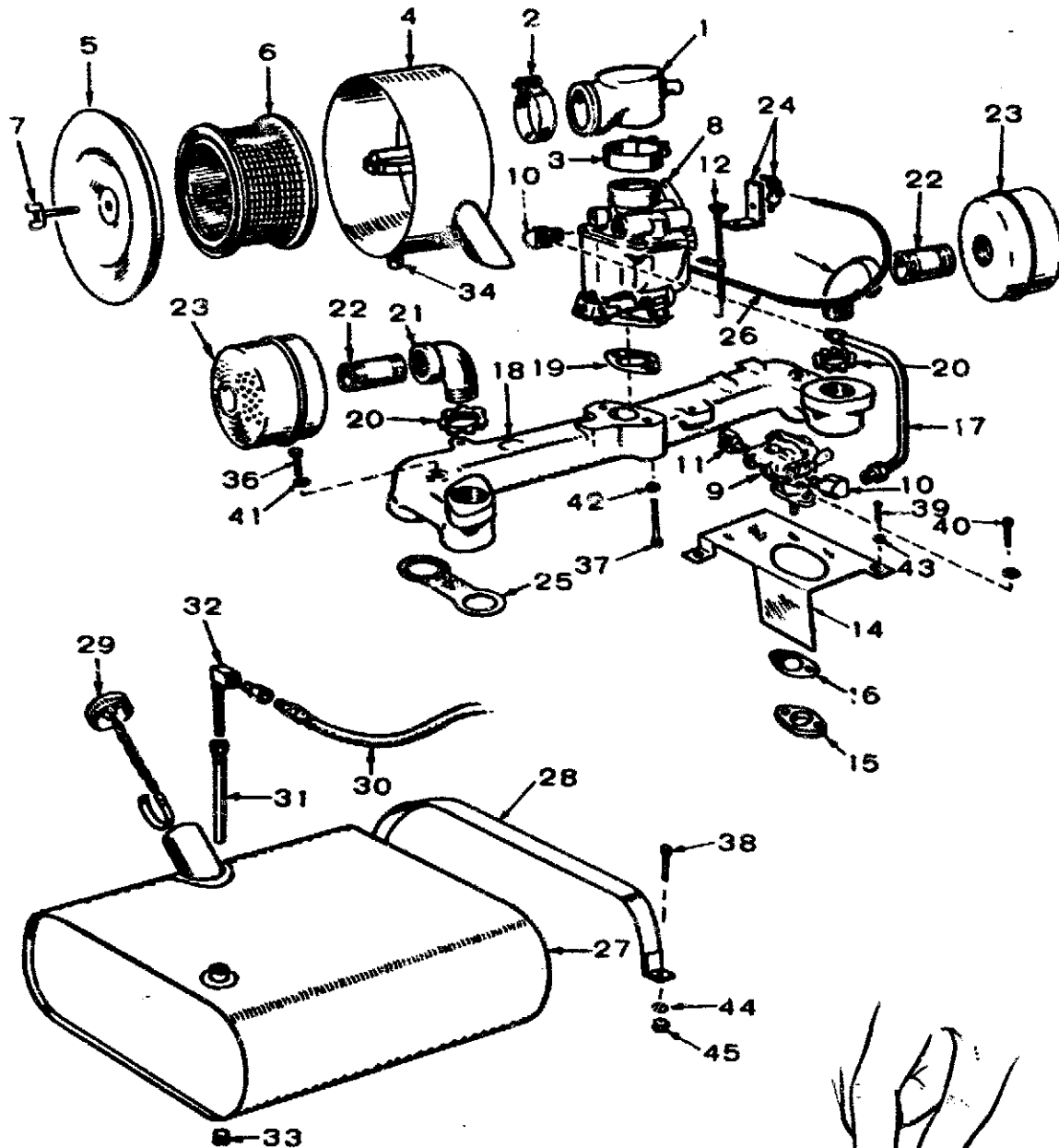
REF. NO.	PART NO.	QTY. USED	PART DESCRIPTION
1	CAMSHAFT		
	105-0140	1	Spec F - Includes Center Pin
	105-0234	1	Spec H and J - Includes Center Pins and Spark Advance Mechanism Pins
	105-0238	1	Begin Spec L - Includes Center Pin
2	105-0332	1	Gear, Camshaft (Includes Parts Marked †)
3	150-0075	1	Pin, Camshaft Center
4	510-0015	10	Ball, Fly - Governor
5	150-1695	1	Cup, Governor - (Includes Parts Marked *)
6	150-0078	1	Ring, Camshaft Center Pin Snap
7	105-0004	1	Washer, Thrust Camshaft Gear
8	515-0001	1	Key, Camshaft Gear Mounting
9	150-1257	1	†Spacer, Governor Fly Ball
10	150-0077	1	†Plate, Governor Fly Ball
11	516-0144	4	Pin Roll - Timing Control Spec H and J - (7/16")
12	160-0789	2	Weight Assembly, Timing Control - Includes Pins (Spec H and J)
13	516-0146	2	Pin, Groove - Timing Control Cam - (Spec H and J)
14	160-0726	1	Retainer, Timing Control - (Spec H and J)
15	110-1283	1	Cover, Timing Control (Spec H & J)
16	160-0727	1	Spring, Timing Control (Spec H & J)
17	518-0185	2	Lock, Timing Control (Spec H & J)
18	160-0791	1	Cam, Timing Control (Spec H & J)
19	150-1520	1	*Cup, Governor - Late Models
20	150-1519	1	*Hub, Governor Cup - Late Models
21	105-0030	1	†Gear, Camshaft

† - Parts Included in 105-0332 Camshaft Gear Assembly.

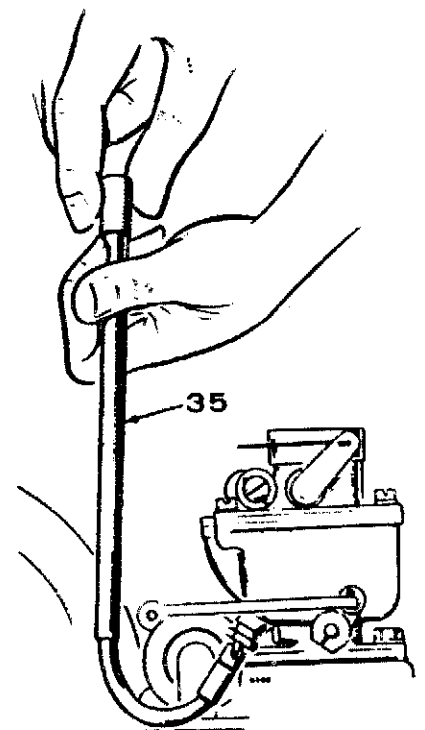
* - Parts Included in 150-1695 Cup Kit.

C-1072

FUEL SYSTEM



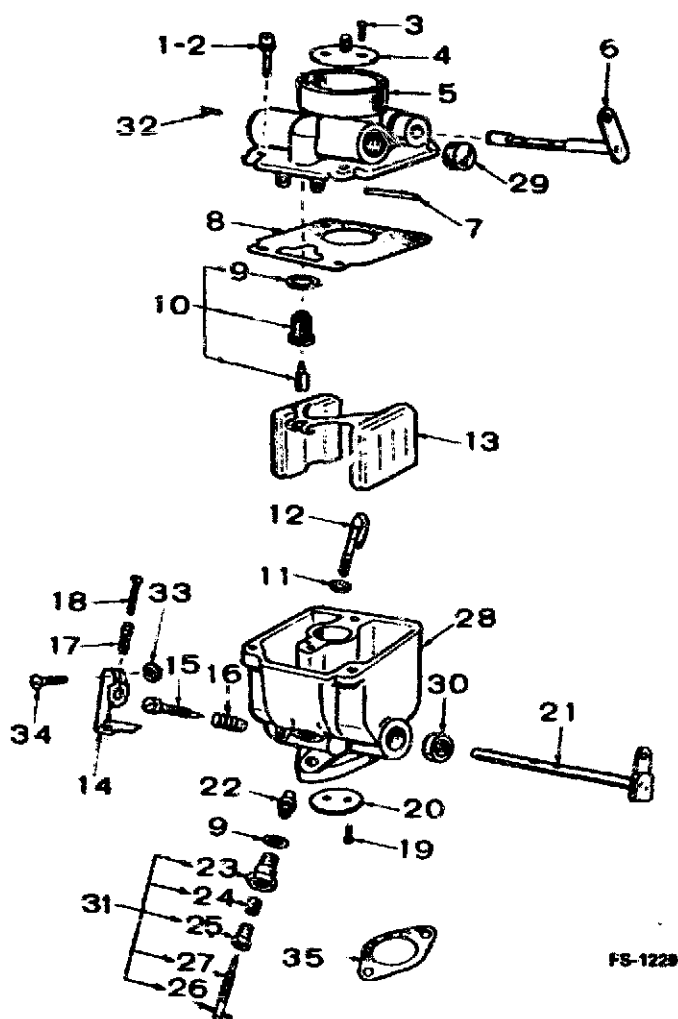
FS-1067



FUEL SYSTEM

REF. NO.	PART NO.	QTY. USED	PART DESCRIPTION	REF. NO.	PART NO.	QTY. USED	PART DESCRIPTION
1	145-0094	1	Inlet, Carburetor Air	25	154-0013	2	Gasket, Intake Manifold
2	503-0280	1	Clamp, Air Inlet to Air Cleaner	26	CHOKE, MANUAL		
3	503-0107	1	Clamp, Air Inlet to Carburetor		153-0097	1	Key 1
4	140-0537	1	Housing, Air Cleaner		153-0165	1	Key 2
5	140-0538	1	Cover, Air Cleaner	27	159-0690	1	Tank, Fuel (7.35 Gal.)
6	140-0495	1	Cartridge, Air Cleaner	28	159-0692	2	Strap, Fuel Tank Mounting
7	518-0056	1	Screw, Wing - Air Cleaner Cover Mounting (10-32 x 1/2)	29	159-0020	1	Cap, Fuel Tank
8	CARBURETOR ASSEMBLY, GASOLINE (Includes Mounting Gasket) (See Separate Group for Components)			30	501-0005	1	Line, Flexible Fuel - Tank to Pump
	142-0647	1	Spec F Only	31	159-0695	1	Tube, Pick-Up - Fuel Tank Outlet
	142-0416	1	Begin Spec H	32	149-0773	1	Elbow & Screen, Fuel Tank
9	149-1784	1	Pump Assembly, Fuel (Includes Mounting Gasket) (See Separate Group for Components)	33	505-0008	1	Plug, Slotted Pipe - Fuel Tank Drain
10	502-0002	2	Elbow, Inverted Male - (1) Fuel Pump Outlet (1) Carburetor Inlet	34	140-0554	1	Spacer, Air Cleaner Mounting Screw
11	502-0020	1	Elbow, Street - Fuel Pump Inlet	35	420-0169	1	Wrench, Carburetor Adjusting
12	149-0271	1	Rod, Fuel Pump Primer - Key 1	36	800-0054	2	Screw, Cap - Hex Head - Intake Manifold Mounting (3/8-16 x 2")
14	134-0981	1	Baffle, Fuel Pump Air	37	800-0009	2	Screw, Cap - Hex Head - Carburetor Mounting (1/4-20 x 1-1/2")
15	149-0045	1	Spacer, Fuel Pump	38	114-0023	2	Screw, Cap - Hex Head - Tank Mounting (Special)
16	149-0003	2	Gasket, Fuel Pump and Spacer Mounting	39	813-0100	1	Screw, Machine - Round Head Fuel Pump Baffle Mounting (10-32 x 1/2")
17	149-0775	1	Line, Fuel Pump to Carburetor	40	806-0009	2	Screw, Cap - Counterbore - Fuel Pump Mounting (1/4-20 x 1-1/10")
18	154-0356	1	Manifold, Intake	41	850-0050	2	Washer, Lock - Spring - Intake Manifold Mtg. (3/8")
19	141-0078	1	Gasket, Carburetor Mounting	42	850-0040	2	Washer, Lock - Spring Carburetor Mounting (1/4")
20	331-0053	2	Nut, Pipe - Exhaust Outlet (1")	43	850-0030	1	Washer, Lock - Spring - Fuel Pump Baffle Mtg. (#10)
21	505-0003	2	Elbow, Street (1") Exhaust Outlet	44	850-0040	2	Washer, Lock - Spring - Fuel Tank Mounting (1/4")
22	505-0087	2	Nipple, Pipe (1" x 3") - Exhaust Outlet	45	870-0212	2	Nut, Hex - Fuel Tank Mounting (1/4-20)
23	155-0484	2	Muffler, Exhaust				
24	153-0263	1	Bracket and Clip, Manual Choke				

CARBURETOR PARTS



REF. NO.	PART NO.	QTY. USED	PART DESCRIPTION
CARBURETOR ASSEMBLY, GASOLINE			
	142-0647	1	Spec F Only
	142-0416	1	Begin Spec H
1	815-0103	1	Screw, Cap - Fillister Head - Bowl Cover (10-24 x 1/2")
2	815-0109	2	Screw Cap - Fillister Head - Bowl Cover (10-24 x 5/8")
3	815-0091	2	†Screw, Cap - Fillister Head - (4-40 x 3/6")
4	142-0055	1	Fly, Choke
5	142-0205	1	Sleeve, Choke (Cover)
SHAFT ASSEMBLY, CHOKE			
6	142-0217	1	Spec F Only (142-0647 Carburetor)
	142-0420	1	Begin Spec H (142-0416 Carburetor)
7	142-0039	1	†Shaft, Float
8	142-0606	1	+Gasket, Body to Bowl
9	148-0017	2	+Gasket (1) Float Valve Seat, (1) Main Adjusting Needle Retainer
VALVE SEAT ASSEMBLY, FLOAT			
	142-0356	1	*Spec F Only
	142-0049	1	†Begin Spec H
11	142-0032	1	+Gasket, Nozzle
12	142-0285	1	Nozzle Assembly
13	142-0361	1	Float and Lever
14	145-0008	1	Lever, Idle Stop
15	142-0040	1	†Needle, Idle Adjusting
16	142-0282	1	Spring, Idle Needle Adjusting
17	142-0035	1	Spring, Throttle Stop Adjusting Screw
18	812-0063	1	Screw, Machine - Round Head - Throttle Stop Adjusting (6-32 x 1/2")
19	815-0072	2	†Screw, Cap - Oval Head - Throttle Fly (4-40 x 1/4")
20	142-0369	1	Fly, Throttle
21	142-0368	1	†Shaft Assembly, Throttle
NUT AND JET, NOZZLE			
	142-0370	1	*Spec F Only
	142-0474	1	†Begin Spec H
23	142-0046	1	Retainer, Main Adjusting Needle
24	142-0206	1	+Packing, Main Adjusting Needle
25	142-0045	1	Retainer, Main Adjusting Needle Packing
26	516-0027	1	Pin, Main Adjusting Needle
27	142-0041	1	†Needle, Main Adjusting
28			Body Assembly (Not Sold Separately)
29	505-0008	1	Plug, Gas Inlet
30	142-0343	2	†Bushing, Throttle Shaft
31	142-0042	1	Needle Assembly - Includes Packing, Nut & Retainer
32	142-0227	1	Pin, Choke Stop
33	870-0053	1	Nut, Hex - Throttle Stop (10-32)
34	813-0102		Screw, Machine - Round Head Throttle Stop Clamp (10-32 x 5/8")
35	141-0078	1	†Gasket, Carburetor Mounting
	142-0033	1	†Gasket Kit, Carburetor (Includes Parts Marked +)
REPAIR KIT, CARBURETOR			
	142-0387	1	Spec F Only (Includes Parts Marked *)
	142-0371	1	Begin Spec H (Includes Parts Marked †)

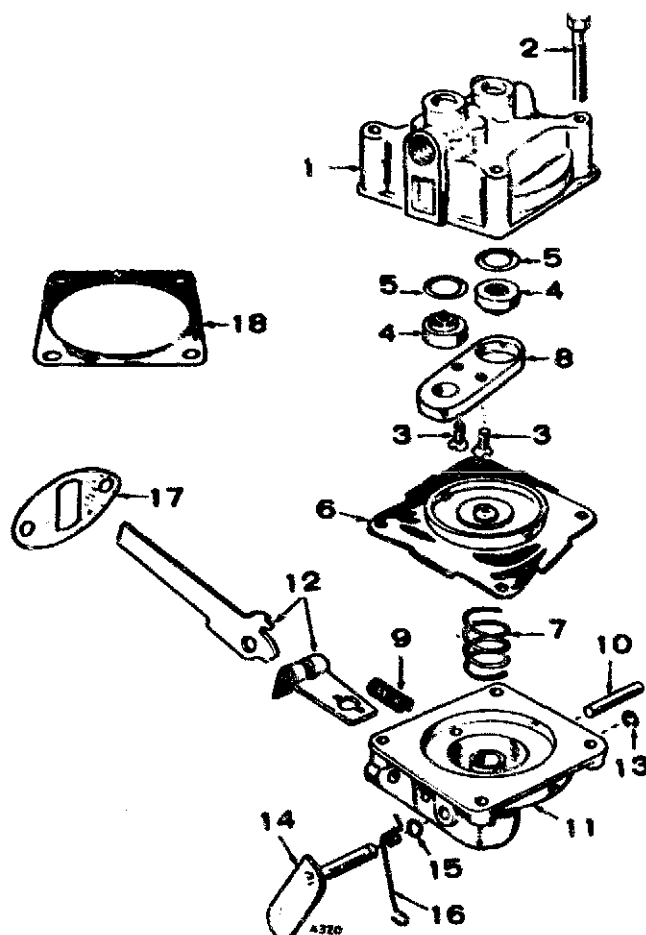
+ - Parts Included in 142-0033 Gasket Kit.

* - Parts Included in 142-0387 Repair Kit.

† - Parts Included in 142-0371 Repair Kit.

Redistribution or publication of this document by any means, is strictly prohibited. 227-0255 (OCTOBER, 1981)

FUEL PUMP PARTS

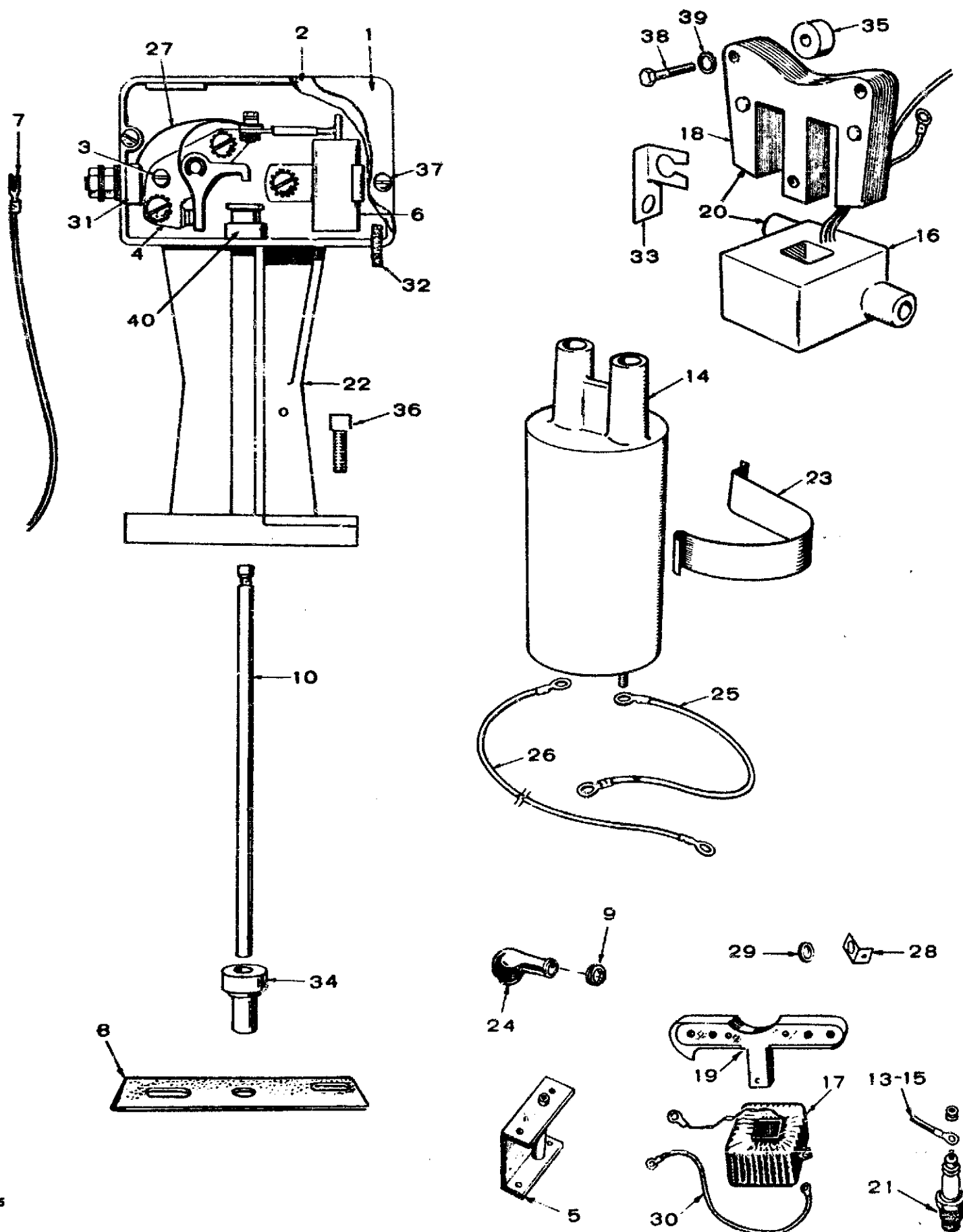


FS-1220

REF. NO.	PART NO.	QTY. USED	PART DESCRIPTION	REF. NO.	PART NO.	QTY. USED	PART DESCRIPTION
	149-1784	1	Pump Assembly, Fuel	11		1	Body, Lower (Not Sold Separately)
	149-0526	1	Repair Kit, Fuel Pump (Includes parts marked *)	12	149-0710	1	Arm and Link Set (Only as a set)
1		1	Body, Upper (Not Sold Separately)	13	518-0129	1	Ring, "E" Retainer - Priming Lever
2	815-0148	4	Screw, Slotted Hex Head (8-32 x 7/8")	14	149-0551	1	Lever, Hand Primer
3	815-0147	2	Screw, Phillips Flat Head (6-32 x 5/8")	15	509-0065	2	Seal, "O" Ring
4	149-0096	2	*Valve and Cage	16	149-0404	1	Spring, Priming Lever
5	149-0095	2	*Gasket, Valve	17	149-0003	2	*Gasket, Fuel Pump and Spacer Mounting (Also in Fuel System Group)
6	149-0582	1	*Diaphragm Assembly	18	149-0858	1	*Gasket, Fuel Pump Diaphragm (Pull Rod Side)
7	149-0672	1	*Spring, Diaphragm				
8	149-0539	1	Retainer, Valve Cage				
9	149-0675	1	*Spring, Rocker Arm				
10	516-0113	1	Pin, Rocker Arm				

* - Parts Included in 149-0526 Repair Kit.

IGNITION SYSTEM



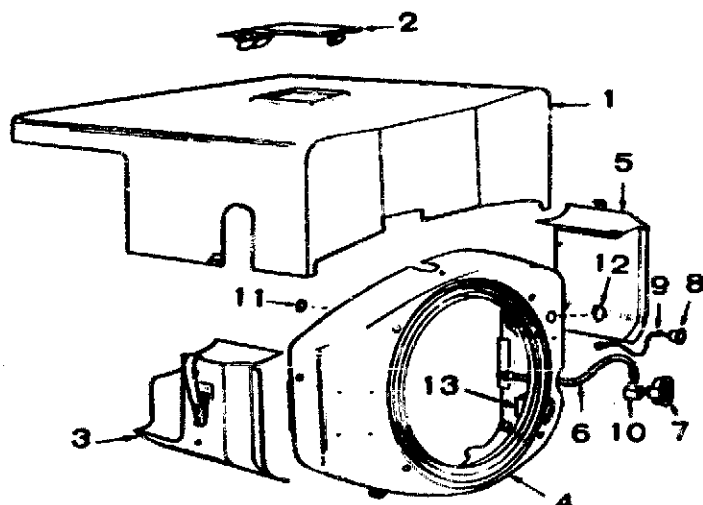
ES-1225

IGNITION SYSTEM

REF. NO.	PART NO.	QTY. USED	PART DESCRIPTION	REF. NO.	PART NO.	QTY. USED	PART DESCRIPTION
1	160-0930	1	*Cover, Breaker Box	22	160-1135	1	Box Assembly, Ignition Breaker - (Includes Parts Marked *)
2	160-0150	1	*Gasket, Breaker Box Cover	23	160-0488	1	Clamp, Ignition Coil - Spec F Only
3	160-0075	1	*Cam, Point Gap Adjusting	24	160-0558	2	Nipple, Ignition Coil (Rubber) - Spec F Only
4	160-0002	1	*Point Set, Ignition Breaker	25	334-0028	1	Lead, Ignition Coil to Ground (4") - Spec F Only (Use 4 Ft. #16 Wire)
5	160-0633	1	Spacer, Breaker Box Mtg. - Spec F through H	26	336-0219	1	Lead, Ignition Coil to Breaker Box (20") - Spec F Only
6	312-0069	1	*Condenser, Breaker Box - 0.3 MFD	27	160-0428	1	*Strap, Point Set to Breaker Box Terminal Block
7	334-0028	1	Lead, Breaker Box to Ignition Switch (use 4 Ft. #16 Wire)	28	332-0273	1	Clip, Magneto Lead
8	160-0043	1	Gasket, Breaker Box	29	508-0002	1	Grommet, Magneto Lead Clip
9	508-0005	2	Grommet, Spark Plug Cables in Blower Housing - Spec F Only	30	334-0032	1	Lead, Magneto Stator to Breaker Box (24") (Use 4 Ft. #16 Wire)
10	160-0723	1	*Plunger Only, Breaker -	31	160-0349	1	*Terminal Screw and Block Assembly
13	CABLE, SPARK PLUG - RIGHT HAND			32	160-0261	1	*Wick, Oil Drain, Breaker Box
	167-1308	1	9" - Spec F Only	33	167-0188	4	Clip, Spark Plug Cable - Begin Spec H
			Begin Spec H - 19"	34	160-0929	1	*Bushing, Breaker Box Plunger - Begin Spec J
	167-1404	1	Non-Resistor Type	35	526-0015	4	Washer, Flat - Pole Shoe Mtg. Begin Spec H (9/32" ID x 9/16" OD x 1/16" Thk)
	167-1595	1	Resistor Type	36	815-0357	2	*Screw, Machine - Round Head Phillips Self Tapping - Breaker Box Mounting (1/4-20 x 7/8")
14	160-0792	1	Coil, Ignition - Spec F Only	37	812-0077	2	*Screw, Machine - Round Head - Breaker Box Cover Mtg. (8-32 x 3/8")
15	CABLE, SPARK PLUG - LEFT HAND			38	815-0259	2	Screw, Machine - Hex Head Thread Cutting - Pole Shoe Mtg. (1/4-20 x 1-1/4")
	167-1309	1	23" - Spec F Only	39	850-0040	2	Washer, Lock - Spring - Pole Shoe Mtg. (1/4")
			Begin Spec H - 16-3/4"	40	160-0931	1	*Guide, Plunger
	167-1403	1	Non-Resistor Type				
	167-1595	1	Resistor Type				
16	160-0750	1	Coil, Magneto Stator - Begin Spec H				
17	160-0282	1	Coil, Magneto Stator - Spec F Only				
18	160-0749	1	Pole Shoe, Magneto Stator - Begin Spec H				
19	160-0281	1	Pole Shoe, Magneto Stator - Spec F Only				
20	160-0752	1	Stator Assembly, Magneto (Includes Coil and Pole)				
21	PLUG, SPARK						
	167-0241	2	Non-Resistor Type				
	167-0237	2	Resistor Type				

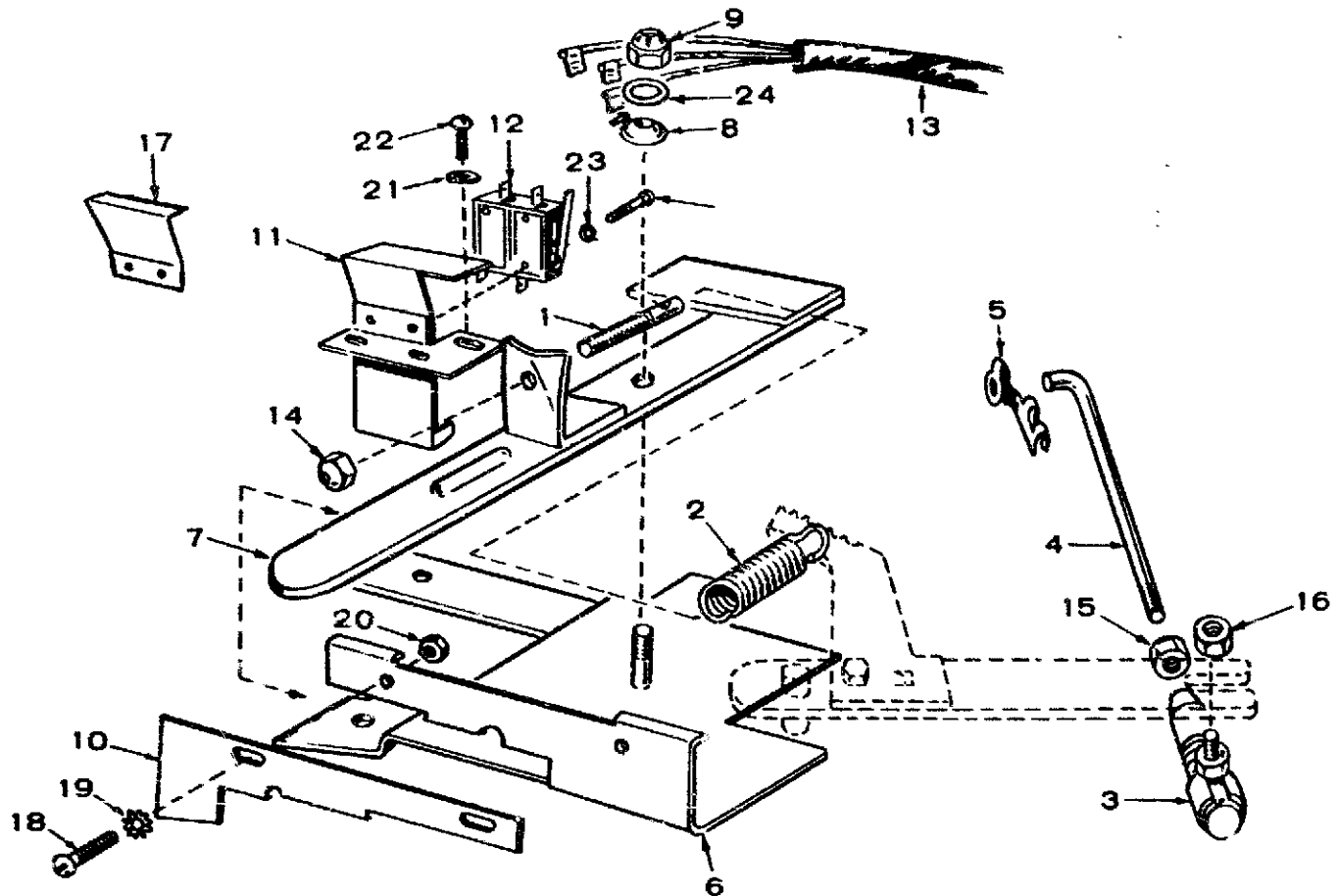
* - Parts Included in 160-1135 Ignition Breaker Box Assembly.

AIR HOUSING



REF. NO.	PART NO.	QTY. USED	PART DESCRIPTION
1	405-1184	1	Cover, Engine and Control
2	405-1187	1	Cover, Lifting Eye
3	134-0980	1	Housing, Cylinder Air - L.H. (#1 Cylinder)
4	134-1579	1	Housing, Blower
5	134-0979	1	Housing, Cylinder Air - R.H. (#2 Cylinder)
6	501-0004	1	Line, Oil Gauge (Flexible)
7	193-0005	1	Gauge, Oil Pressure
8	313-0018	1	Button, Stop - Key 1
9	334-0028	1	Lead, Stop Button - Key 1
10	502-0005	1	Elbow, Inverted Female - Oil Gauge
11	508-0095	2	Grommet (For 17/32" Hole)
12	517-0021	1	Button, Dot (For 7/8" Hole)
13	193-0031	1	Oil Gauge Mounting - 2" U Clamp

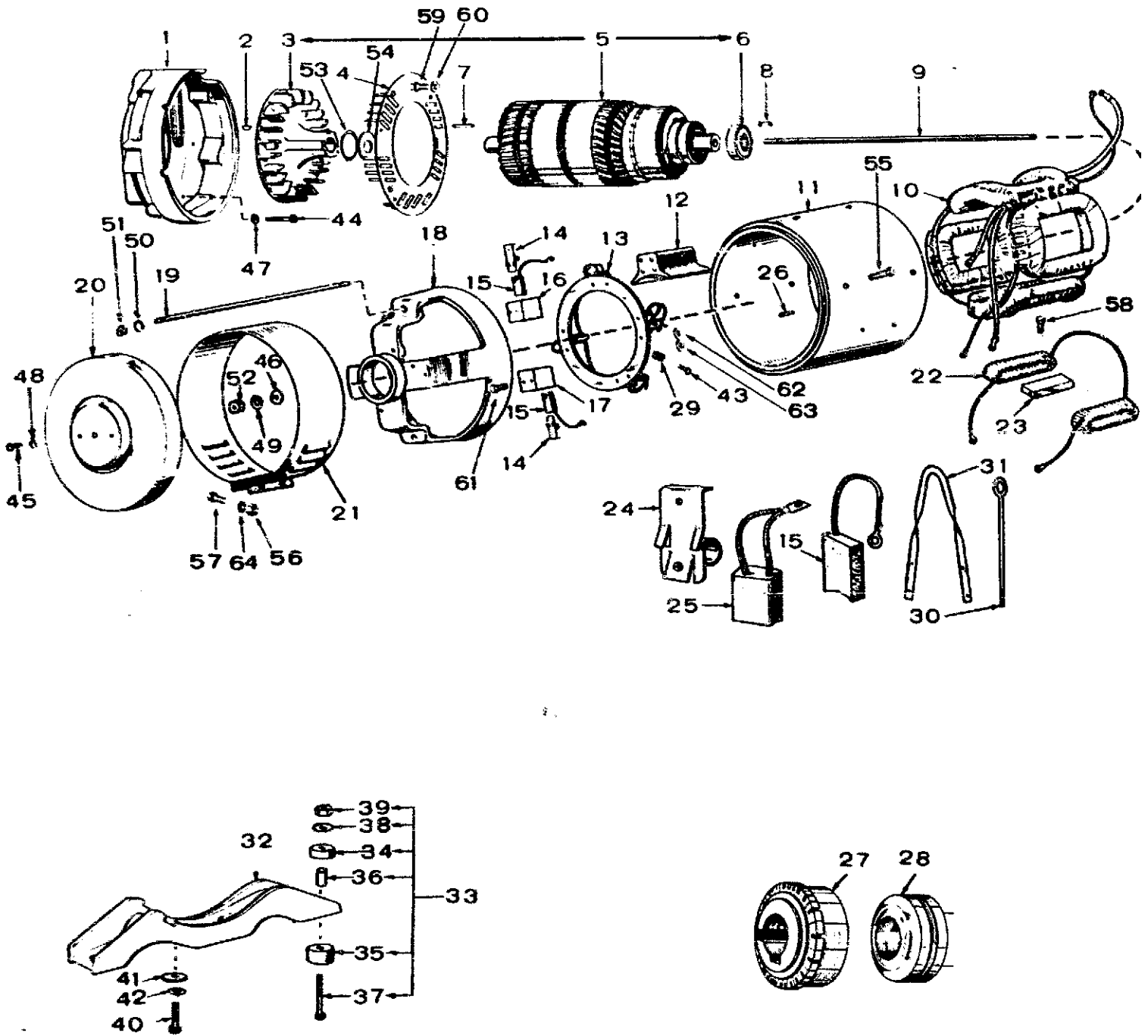
GOVERNOR



FS-1036

REF. NO.	PART NO.	QTY. USED	PART DESCRIPTION	REF. NO.	PART NO.	QTY. USED	PART DESCRIPTION
1	150-1009	1	Stud, Governor Adjusting	13	338-0228	1	Harness, Wiring - Micro Switch
2	150-0098	1	Spring, Governor	14	870-0053	1	Nut, Hex - Governor Adjusting Stud (10-32)
3	150-C639	1	Joint, Governor Link Ball	15	870-0053	1	Nut, Hex - Governor Ball Joint to Link (10-32)
4	150-0629	1	Link, Governor Arm to Carburetor	16	870-0131	1	Nut, Hex - Governor Ball Joint to Governor Arm (10-32) - with External Lock Washer
5	518-0006	1	Clip, End - Link to Carburetor	17	152-0119	1	Insulator, Fiber - Micro Switch Terminal
6	BRACKET, VARIABLE SPEED GOVERNOR			18	812-0077	2	Screw, Machine - Round Head - Governor Plate Adjusting (8-32 x 3/8")
	152-0109	1	Models with 60 Hertz AC Output	19	853-0005	2	Washer, Lock (External Shakeproof) Governor Plate Adjusting (#8)
	152-0130	1	Models with 50 Hertz AC Output	20	860-0008	2	Nut, Hex - Governor Plate Adjusting (8-32)
7	LEVER, SPEED ADJUSTING			21	853-0008	2	Washer, Lock (External Shakeproof) Micro Switch Mtg. Bracket (#10)
	152-0111	1	Models with 60 Hertz AC Output	22	813-0098	2	Screw, Machine - Round Head - Micro Switch Mtg. Bracket - (10-32 x 3/8")
	152-0129	1	Models with 50 Hertz AC Output	23	850-0020	2	Washer, Lock - Spring - Micro Switch Mtg. (#6)
8	152-0041	2	Washer, Tension - Speed Lever	24	812-0066	2	Screw, Cap - Round Head - Micro Switch Mtg. (6-32 x 3/4")
9	870-0065	1	Nut, Huglock - Speed Lever - (1/4-20)				
10	152-0110	1	Plate, Adjusting - Speed Lever Travel				
11	152-0112	1	Bracket, Micro Switch Mounting				
12	308-0151	1	Switch, Micro				

GENERATOR



G-1

GENERATOR

REF. NO.	PART NO.	QTY. USED	PART DESCRIPTION	REF. NO.	PART NO.	QTY. USED	PART DESCRIPTION
1	ADAPTER, GENERATOR TO ENGINE			39	870-0048	2	*Nut, Hex - Cushion Mounting (5/16-18)
	231-0124	1	Spec F - Also Spec T	40	800-0050	2	Screw, Cap - Hex Head - Generator Support Mounting (3/8-16 x 1")
	231-0104	1	Begin Spec H	41	526-0030	2	Washer, Flat - Generator Support Mounting (13/32" ID x 7/8" OD x 1/8" Thk)
2	515-0006	1	Key, Blower to Crankshaft	42	850-0050	2	Washer, Lock - Spring - Generator Support Mtg. (3/8")
3	205-0053	1	Blower, Generator	43	800-0003	4	Screw, Cap - Hex Head - Clamp Mtg. (1/4-20 x 1/2")
4	232-1256	1	Plate, Baffle	44	800-0050	4	Screw, Cap - Hex Head - Generator Adapter Mounting (3/8-16 x 1")
5	ARMATURE ASSEMBLY (Includes Blower and Bearing)			45	813-0098	2	Screw, Machine - Round Head - End Bell Cover Mounting (10-32 x 3/8")
	201-1041	1	6.0CCK-331P & 6.0CCK-331E	46	526-0032	1	Washer, Flat - Armature Through Stud (29/64" ID x 7/8" OD x 1/16" Thk)
	201-1059	1	6.0CCK-332P & 6.0CCK-332E	47	850-0050	4	Washer, Lock - Spring - Generator Adapter Mtg. (3/8")
	201-1195	1	6.0CCK-5331P & 6.0CCK-5331E	48	850-0030	2	Washer, Lock - Spring - End Bell Cover Mtg. (#10)
	201-1167	1	6.0CCK-5332P & 6.0CCK-5332E	49	850-0055	1	Washer, Lock - Spring - Armature Through Stud (7/16")
6	510-0047	1	Bearing, Armature (Double Sealed - Pre-Lubricated)	50	850-0045	2	Washer, Lock - Spring - Generator Through Stud (5/16")
7	515-0122	1	Key, Drive - Blower to Armature	51	862-0015	2	Nut, Hex - Generator Through Stud (5/16-18)
8	232-0536	1	Clip, Bearing Stop	52	NUT, HEX - ARMATURE THROUGH STUD		
9	STUD, ARMATURE THROUGH				862-0004	1	Through Spec S (7/16-14)
	520-0534	1	Through Spec S		870-0203	1	Begin Spec T (7/16-20)
	520-0733	1	Begin Spec T	53	518-0014	2	Ring, Retaining - Begin Spec T
10	COIL ASSEMBLY, FIELD (Set of 4 Coils Connected)			54	232-0029	1	Washer - Begin Spec T
	222-1560	1	Key 1	55	110-0284	8	Screw, Cap - Hex Head - Begin Spec T - (Special)
	222-1558	1	Key 2	56	870-0053	2	Nut, Hex - End Bell Band (10-32)
11	210-0260	1	Frame, Generator - Less Coils & Poleshoes (Machined)	57	815-0110	2	Screw, Machine - Round Head - End Bell Band (10-32 x 7/8" lg)
12	221-0118	4	Shoe, Pole	58	800-0030	4	Screw, Cap - Hex Head - Interpole (5/16-18 x 1-1/4" lg)
13	RIG ASSEMBLY, BRUSH			59	813-0098	4	Screw, Machine - Round Head - Baffle Plate (10-32 x 3/8" lg)
	212-0229	1	Spec F - Also Spec T	60	850-0030	4	Washer, Lock - Baffle Plate (#10)
	212-0276	1	Begin Spec H	61	815-0165	8	Screw, Machine - Flat Head - Upper and Lower AC Brush Holder (10-32 x 7/8" lg) - Begin Spec T - Key 1
14	SPRING, AC BRUSH			62	850-0040	4	Washer, Lock - Clamp Mounting (1/4") - Begin Spec T - Key 1
	212-1123	4	Spec F - Also Spec T	63	526-0018	4	Washer, Flat - Clamp Mounting (17/64" ID x 5/8" OD x 1/16" Thk) - Begin Spec T - Key 1
	212-1105	4	Begin Spec H	64	850-0030	2	Washer, Lock - End Bell Band (#10) - Begin Spec T
15	214-0050	4	Brush, AC				
16	212-1161	2	Holder, AC Brush - Spec F - Also Spec T - Upper				
17	212-1160	2	Holder, AC Brush - Spec F - Also Spec T - Lower				
18	BELL, END						
	211-0111	1	Spec F - Also Spec T - Key 1				
	211-0097	1	Begin Spec H				
19	520-0161	2	Stud, Generator Through				
20	211-0114	1	Cover, End Bell				
21	234-0002	1	Band, End Bell				
22	222-1458	1	Coil Set, Interpole				
23	221-0116	2	Interpole				
24	212-1106	4	Spring, DC Brush				
25	214-0067	4	Brush, DC				
26	516-0103	2	Pin, Roll - Generator Frame				
27	203-0125	1	Commutator				
28	204-0009	1	Ring Collector				
29	212-1214	4	Clamp, Brush Rig				
30	403-0580	1	Eyebolt, Lifting - Spec F Only				
31	403-0642	1	Yoke, Lifting - Begin Spec H				
32	232-1368	1	Support, Generator				
33	402-0223	2	Cushion Assembly Set Mounting - Generator End (Includes Parts Marked *)				
34	402-0131	2	*Cushion, Mounting (Upper)				
35	402-0192	2	*Cushion, Mounting (Lower)				
36	402-0193	2	*Bushing (Sleeve) Mounting				
37	800-0037	2	*Screw, Cap - Hex Head - Cushion Mtg. (5/16-18 x 3")				
38	526-0076	2	*Washer, Flat - Cushion Mounting (11/32" ID x 1-1/2" OD x 1/16" Thk)				

* - Parts Included in 402-0223 Cushion Assembly - Generator End.

This diagram illustrates the exploded view of a control unit assembly. The central component is a main control housing (1) which features a control panel (10) with various knobs and switches. Above the housing is a top panel (22) with a row of indicator lights or buttons (27, 47). To the right, a large, complex assembly (3) is shown, which appears to be a multi-channel relay or switch mechanism, featuring a series of vertical levers (31, 33, 35, 39, 41, 43) and a base (45). Below the main housing, there is a terminal block assembly (16A) with multiple connection points (79, 80). To the right of the main housing, a large, rectangular component (72) is shown, which could be a filter or a heat exchanger. Various other components are shown in exploded view, including screws (44, 48, 54, 59, 67, 77, 78, 79, 80), washers (49, 50, 51, 52, 53, 58, 60, 61, 62, 63, 64, 65, 66, 68, 69, 70, 71, 72, 73, 74, 75, 76, 77, 78, 79, 80), and other small parts (1, 2, 3, 4, 5, 6, 7, 8, 9, 10, 11, 12, 13, 14, 15, 16, 17, 18, 19, 20, 21, 23, 24, 25, 26, 28, 30, 32, 34, 36, 38, 40, 42, 43, 44, 45, 46, 47, 48, 49, 50, 51, 52, 53, 54, 55, 56, 57, 58, 59, 60, 61, 62, 63, 64, 65, 66, 67, 68, 69, 70, 71, 72, 73, 74, 75, 76, 77, 78, 79, 80, 81, 82, 83, 84, 85). The diagram is labeled with numerous numbers (1 through 85) corresponding to the parts.

16A

REF. NO.	PART NO.	QTY. USED	PART DESCRIPTION
5	303-0112	1	Rheostat
6	304-0061	1	Knob, Rheostat
7	304-0183	1	Resistor, Field (5.5-Ohm, 160 Watt)
8	304-0117	1	Bracket, Field Resistor Mtg.
	PANEL, CONTROL BOX		
9	301-1785	1	Spec F Only
10	301-2298	1	Begin Spec H
	RESISTOR, BATTERY CHARGE - KEY 2		
11	304-0474	1	30-Ohm, 220 Watt (Ribbed) - 1-1/8" x 6"

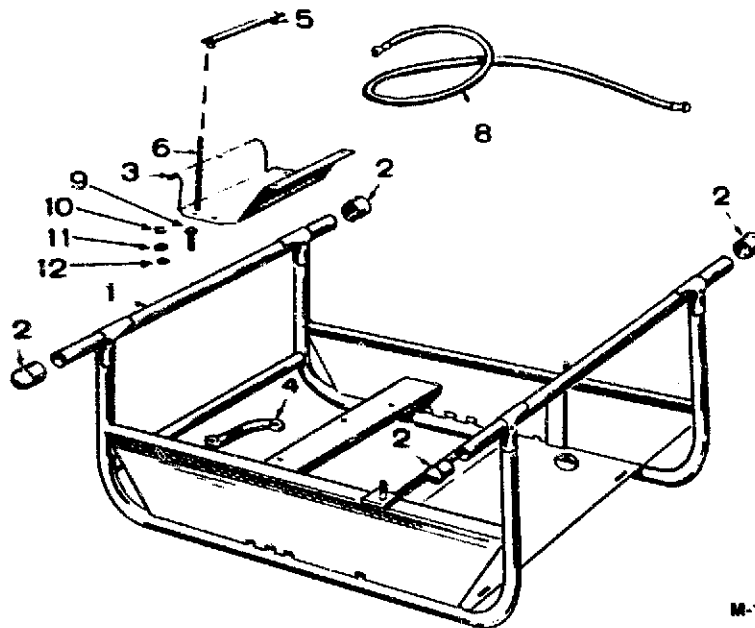
CONTROL

REF. NO.	PART NO.	QTY. USED	PART DESCRIPTION	REF. NO.	PART NO.	QTY. USED	PART DESCRIPTION
12	304-0472	1	15-Ohm, 75 Watt (3/4 x 6")	50	800-0007	4	Screw, Cap - Hex Head Panel Mtg. (1/4-20 x 1")
13	304-0470	2	Bracket, Battery Charge Resistor Mtg. - Key 2	51	526-0015	4	Washer, Flat (9/32" ID x 9/16" OD x 1/16" Thk)
14	308-0028	1	Switch, Start - Key 2	52	850-0040	4	Washer, Lock Spring (1/4")
15	308-0068	1	Switch, Ignition - Key 2	53	862-0001	4	Nut, Hex (1/4-20)
16	308-0002	1	Switch, High-Low Charge	54	508-0008	3	Grommet
16A	RESISTOR ELEMENTS AND JACK ASSEMBLY			55	815-0026	26	†Screw, Cap - Truss Head (10-32 x 5/8")
	304-0471	1	Spec F Only (Includes Parts Marked *, plus hardware)	56	800-0007	4	Screw, Cap - Hex Head Panel Mtg (1/4-20 x 1")
	304-0558	1	Begin Spec H (Includes Parts Marked †, plus hardware)	57	526-0015	4	Washer, Flat (9/32" ID x 9/16" OD x 1/16" Thk)
17	301-1778	2	†Bracket, Resistor Elements Mtg.	58	304-0006	2	Washer, Resistor Centering
18	301-1777	1	†Block, Terminal - Resistor Element Fastening	59	813-0116	1	Screw, Machine - Round Head Resistor Mounting (#10-32 x 6-1/2" lg)
19	316-0044	11	†Jack, Plug - Welder Cable Connecting	60	853-0008	1	Washer, Lock (External) Resistor Mtg. (#10)
20	308-0149	10	†Angle, Connector - Resistor Elements to Plug Jack - 1-23/32" Long	61	870-0053	1	Nut, Hex (#10-32) Resistor Mtg.
21	308-0128	2	†Angle, Connector - Resistor Elements to Plug Jack - 3-1/8" Long (One only used Spec F)	62	304-0015	2	Washer, Resistor Centering
22	304-0469	1	†Rod, Insulator Tubes Mtg.	63	813-0116	1	Screw, Machine - Round Head Resistor Mtg. (#10-32 x 6-1/2" lg)
23	115-0056	1	†Spring, Insulator Tube	64	853-0008	1	Washer, Lock - External Resistor Mounting (#10)
24	304-0379	8	†Tube, Insulator	65	870-0053	1	Nut, Hex (#10-32) Resistor Mounting
25	870-0173	2	†Nut, Push - Insulator Rod Mtg. (3/8-24)	66	304-0015	2	Washer, Resistor Centering
26	526-0101	1	†Washer, Flat - Insulator Rod Mtg. (19/64" ID x 5/8" OD x 1/16" THK)	67	813-0116	1	Screw, Machine - Round Head Resistor Mtg. (#10-32 x 6-1/2" lg)
27	868-0011	11	†Nut, Hex Jam - Jack Mtg. (3/4-16)	68	853-0008	1	Washer, Lock - External Resistor Mtg. (#10)
	ELEMENT, RESISTOR			69	870-0053	1	Nut, Hex (#10-32) Resistor Mtg.
28	304-0467	2	*Spec F Only	70	813-0098	4	Screw, Machine - Round Head (#10-32 x 3/8" lg)
29	304-0551	1	†Begin Spec H	71	850-0030	4	Washer, Lock - Spring (#10)
	ELEMENT, RESISTOR			72	815-0350	4	Screw, Tapping - Slotted Head (#10-32 x 3/8" lg)
30	304-0466	1	*Spec F Only	73	813-0105	4	Screw, Machine - Round Head (#10-32 x 1" lg)
31	304-0467	1	†Begin Spec H	74	853-0008	8	Washer, Lock - (External Tooth) (#10)
	ELEMENT, RESISTOR			75	870-0053	4	Nut, Hex (#10-32)
32	304-0462	1	*Spec F Only	76	812-0063	2	Screw, Sheet Metal - Round Head (#6-32 x 1/2" lg)
33	304-0466	1	†Begin Spec H	77	321-0138	1	Fuse - Optional
	ELEMENT, RESISTOR			78	321-0106	1	Holder, Fuse - Optional
34	304-0463	1	*Spec F Only	79	508-0006	2	Washer, Fiber - Begin Spec H
35	304-0552	1	†Begin Spec H	80	508-0018	4	Washer, Fiber - Begin Spec H
	ELEMENT, RESISTOR			81	332-0592	2	Jumper, Rheostat and Resistor
36	304-0553	1	†Begin Spec H	82	332-0142	1	Lug, Solderless
	ELEMENT, RESISTOR			83	332-0609	1	Block, Terminal - Begin Spec J - Key 1
38	304-0468	2	*Spec F Only	84	332-0610	1	Strip, Marker - Begin Spec J - Key 1
39	304-0465	2	†Begin Spec H	85	301-2668	1	Guard, Terminal - Begin Spec J - Key 2
	ELEMENT, RESISTOR						
40	304-0464	1	*Spec F Only				
41	304-0468	2	†Begin Spec H				
	ELEMENT, RESISTOR						
42	304-0383	1	*Spec F Only				
43	304-0554	1	†Begin Spec H				
44	316-0045	2	Plug, Welding Cables				
45	304-0555	1	†Element, Resistor - Begin Spec H				
46	815-0026	26	Screw, Cap - Truss Head - (10-32 x 5/8")				
47	526-0120	11	Washer, Flat - Jack Mounting (25/32" ID x 1-1/4" OD x 1/16" THK)				
48	854-0031	11	Washer, Lock - (Internal Shakeproof) - (3/4")				
49	815-0223	11	Screw, Cap - Hex Head - Angle Connector to Jack (1/4-20 x 5/8")				

* - Parts Included in 304-0471 Resistor
Elements and Jack Assembly.

† - Parts Included in 304-0558 Resistor
Elements and Jack Assembly.

CARRYING FRAME



M-1284

REF. NO.	PART NO.	QTY. USED	PART DESCRIPTION
1	403-0586	1	Frame, Carrying
2	403-0588	4	Tips, Rubber - Carrying Frame
3	416-0452	1	Rack, Battery - Key 2
4	STRAP, GROUND - CARRYING FRAME TO BLOWER HOUSING		
	337-0050	1	Through Spec 5
	337-0056	1	Begin Spec T
5	416-0453	1	Strap, Battery Holddown - Key 2
6	416-0454	2	Stud, Battery Holddown - Key 2
8	LEAD, BATTERY TO CONTROL - KEY 2		
	336-1248	1	Positive Post to Start Switch (36")
	336-1412	1	Negative Post to Terminal Stud (36")
9	800-0005	2	Screw, Cap - Hex Head (1/4-20 x 3/4")
10	850-0040	2	Washer, Lock (1/4")
11	862-0001	2	Nut, Hex (1/4-20)
12	856-0006	2	Washer (EIT) (1/4")

SERVICE KITS AND MISCELLANEOUS

NOTE: For other kits, refer to the group for the parts in question.

REF. NO.	PART NO.	QTY. USED	PART DESCRIPTION
	98-2028	1	Decal Kit
	168-0103	1	Gasket Kit, Plant
	160-0836	1	Kit, Ignition Tune-up
	168-0095	1	Kit, Gasket - Carbon Removal (2 Manifold Gaskets Not Used)
	522-0191	1	Overhaul Kit
	412-0032	1	Cover, Canvas (Optional)
	110-1827	4	Guide, Valve (to Stop Oil Seepage)
	525-0454	1	Paint touch-up - Enamel - Greige Pressurized Can (13 oz)

SERVICE KITS AND MISCELLANEOUS

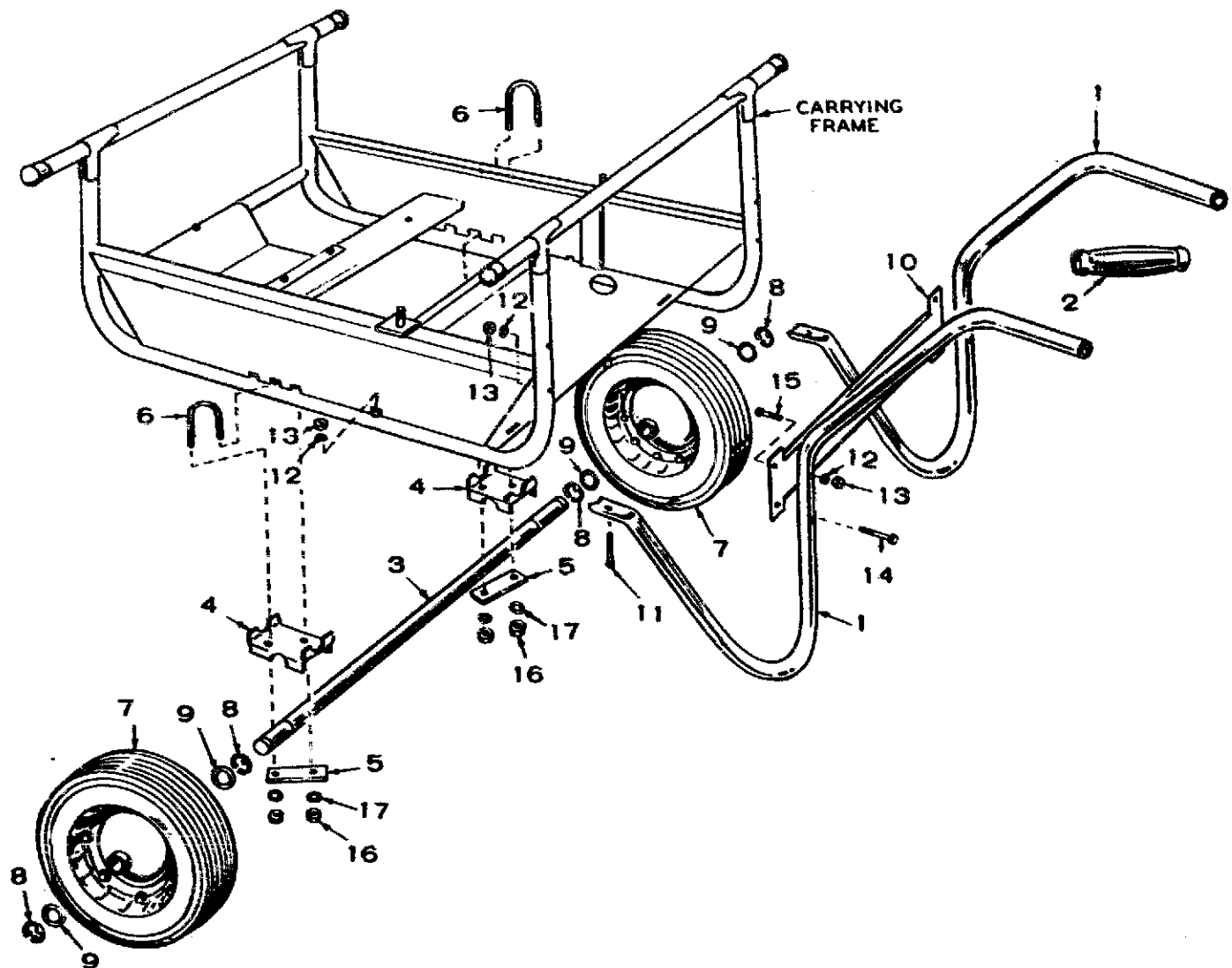
NOTE: For other kits, refer to the group for the parts in question.

REF. NO.	PART NO.	QTY. USED	PART DESCRIPTION
	98-2028	1	Decal Kit
	168-0103	1	Gasket Kit, Plant
	160-0836	1	Kit, Ignition Tune-up
	168-0095	1	Kit, Gasket - Carbon Removal (2 Manifold Gaskets Not Used)
	522-0191	1	Overhaul Kit
	412-0032	1	Cover, Canvas (Optional)
	110-1827	4	Guide, Valve (to Stop Oil Seepage)
	525-0454	1	Paint touch-up - Enamel - Greige Pressurized Can (13 oz)

OPTIONAL EQUIPMENT PARTS SECTION

This section contains illustrated parts listing of factory installed options for the generator sets. Options may not be applicable to all models; for field conversions additional parts are usually required. Optional parts listed in this section are in addition or in place of those shown in the standard parts section.

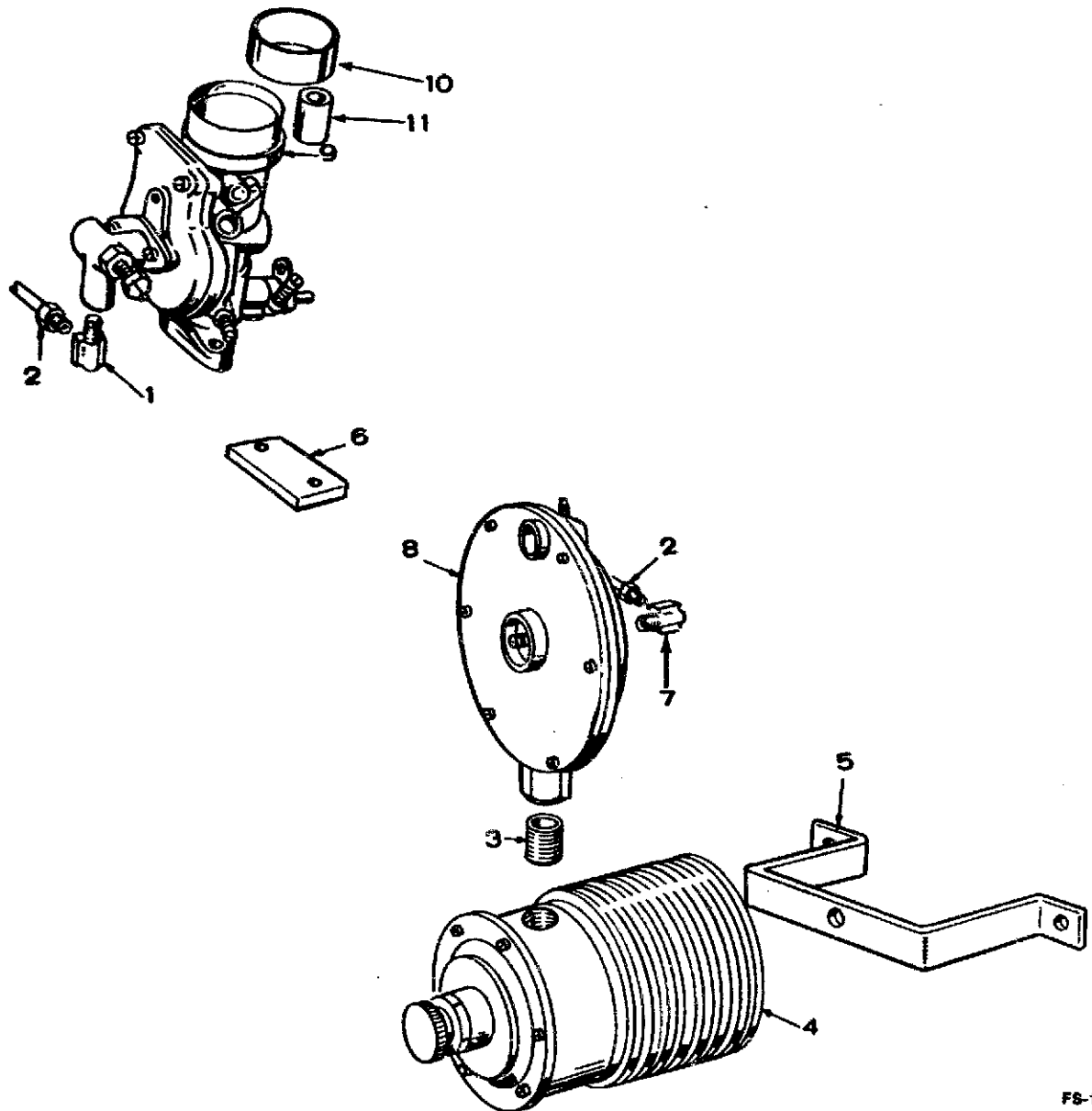
DOLLY (Optional Equipment)



M-1245

REF. NO.	PART NO.	QTY. USED	PART DESCRIPTION
	410-0287	1	Dolly Assembly - Includes entire group plus hardware (Does NOT include Carrying Frame).
1	410-0285	2	Handle
2	403-0205	2	Grip, Handle
3	410-0233	1	Axle
4	410-0283	2	Support, Axle
5	410-0284	2	Plate, Axle Support
6	410-0148	2	Bolt, "U" - Axle Mounting
7	410-0236	2	Wheel & Tire Assembly - Includes Tube
8	518-0130	4	Ring, "E" Retainer - Dolly Wheel to Axle
9	526-0081	4	Washer, Flat - Wheel Mtg. (1-1/64" ID x 1-5/8" OD x 1/8" THK)
10	410-0313	1	Brace, Handle
11	800-0031	2	Screw, Cap - Hex Head (5/16-18 x 1-1/2")
12	850-0045	6	Washer, Lock - Spring Handle Mtg. (5/16")
13	862-0015	6	Nut, Hex (5/16-18) - Handle Mounting
14	800-0035	2	Screw, Cap - Hex Head (5/16-18 x 2-1/2")
15	814-0182	2	Screw, Machine - Flathead (5/16-18 x 1-1/2")
16	862-0003	4	Nut, Hex (3/8-16)
17	850-0050	4	Washer, Lock Spring (3/8")

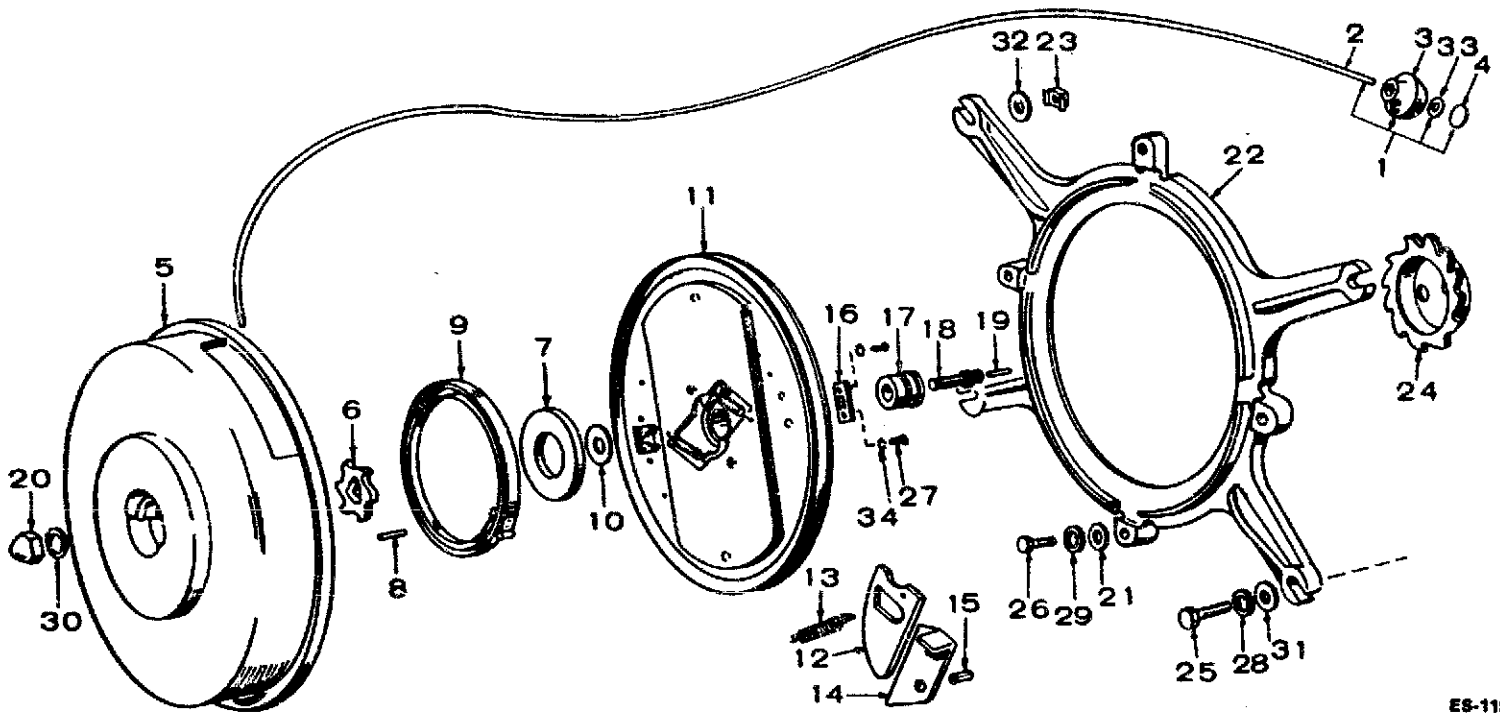
FUEL SYSTEM (OPTIONAL) LIQUID PETROLEUM GAS ONLY



FS-1124

REF. NO.	PART NO.	QTY. USED	PART DESCRIPTION
1	502-0039	1	Elbow, Carburetor Inlet
2	159-0745	1	Line, Fuel - Vaporizer to Carburetor
3	505-0099	1	Nipple, Vaporizer to Regulator
4	148-0418	1	Vaporizer Assembly
5	148-0423	1	Bracket, Vaporizer Mounting
6	149-0136	1	Cover, Crankcase, Fuel Pump Hole
7	502-0039	1	Elbow, Regulator Outlet
8	148-0465	1	Regulator, LPG - Secondary
9	141-0647	1	Carburetor and Pressure Regulator Assembly - LPG
	141-0653	1	Repair Kit, Carburetor
	141-0652	1	Gasket Kit, Carburetor
	141-0651	2	Seal, Throttle Shaft (Component of Carburetor)
	141-0650	2	Retainer, Throttle Shaft Seal (Component of Carburetor)
10	145-0316	1	Adapter Ring, Carburetor
11	140-0596	1	Spacer, Air Cleaner Housing - Liquid Gas

READI-PULL STARTER KEY 1 (OPTIONAL)



ES-1153

REF. NO.	PART NO.	QTY. USED	PART DESCRIPTION	REF. NO.	PART NO.	QTY. USED	PART DESCRIPTION
	192-0325	1	Starter Kit, Complete (Includes Mounting Ring and Ratchet Wheel)	21	526-0180	4	Washer, Flat - Starter to Mtg. Ring (17/64" ID x 7/8" OD x 1/8" THK)
1	192-0045	1	Rope and Grip Assembly	22	192-0186	1	Ring, Mounting - Starter to Blower Housing
2	192-0043	1	Rope (Less Grip) 83" Long	23	870-0110	4	Nut, Hex - Speed Grip - Starter Ring to Blower Housing (1/4-20)
3	192-0044	1	Grip, Starter Rope	24	192-0309	1	Wheel, Ratchet
4	517-0025	1	Plug, Starter Rope Grip	25	800-0007	4	Screw, Cap - Hex Head - Starter Mtg. (1/4-20 x 1")
5	192-0409	1	Cover, Starter	26	815-0137	4	Screw, Self Tapping - Hex Head - Starter to Mounting Ring (1/4-20 x 5/8")
6	192-0153	1	Wheel, Cog, Anti-Backlash	27	815-0137	2	*Screw, Self Tapping - Hex Head - Rope Clamp Mtg. (1/4-20 x 5/8")
7	526-0168	1	Washer, Flat - Spring Retainer - (Used on Later Model Starters) (1-15/32" ID x 3" OD x .047 Thk)	28	850-0040	4	Washer, Lock - Spring - Starter Mounting (1/4")
8	516-0138	1	Pin, Roll (3/16 x 5/8) - Recoil Spring	29	850-0040	4	Washer, Lock - Spring - Starter to Mounting Ring (1/4")
9	192-0039	1	Spring, Recoil	30	850-0050	1	Washer, Lock - Spring - Bushing to Cover (3/8")
10	526-0123	1	Washer, Flat - Sheave Bushing to Cover (25/64" ID x 1-1/4" OD x .0598 Thk)	31	526-0130	4	Washer, Flat - Starter Mounting (17/64" ID x 1" OD x 1/16" THK)
11	192-0180	1	Sheave Assembly, Rope (Includes Parts Marked *)	32	526-0158	4	Washer, Flat - Starter to Mtg. Ring (.261" ID x 1" OD x 1/8" THK)
12	192-0172	2	*Pawl	33	526-0169	1	Washer, Flat - Starter Rope Grip (17/64" ID x 7/8" OD x 1/16" THK)
13	192-0165	2	*Spring, Pawl	34	526-0015	2	*Washer, Flat - Rope Clamp Mtg. (9/32" ID x 9/16" OD x 1/16" THK)
14	192-0168	2	*Arm, Ratchet				
15	516-0110	4	*Pin, Roll (5/16 x 1/2") - (2) Ratchet Arm, (2) Pawl				
16	192-0167	1	*Clamp, Rope				
17	192-0163	1	Bearing (Bronze), Sheave Hub				
18	192-0323	1	Screw, Cap - Socket Head - Sheave Bushing to Cover - (Special)				
19	516-0132	1	Pin, Spiral (Brass - 1/8 x 5/8") - Starter Locating				
20	870-0138	1	Nut, Hex - Flexlock, Bushing to Cover Screw (3/8-16)				

* - Parts Included in 192-0180 Rope Sheave Assembly.

SPEC. PARTS DATA INDEX

MODEL	SPEC.	FICHE LOCATION
6.0CCK-5332E38	1L	C7
6.0CCK-331E	1T	C8
6.0CCK-331P	1T	C9
6.0CCK-332E	1T	C10
6.0CCK-332P	1T	C11
6.0CCK-5331E	1T	C12
6.0CCK-5331P	1T	C13
6.0CCK-5332E	1T	C14
6.0CCK-5332P	1T	D1
6.0CCK-331P	38L	D2
6.0CCK-331E	38T	D3
6.0CCK-331P	38T	D4
6.0CCK-5331E	38T	D5
6.0CCK-5332P	38T	D6
6.0CCK-331E	4325T	D7
6.0CCK-5331E	4325T	D8
6.0CCK-5332E	4325T	D9
6.0CCK-5332P	4325T	D10
6.0CCK-331E	4443T	D11
6.0CCK-331P	4443T	D12
6.0CCK-5331P	4443T	D13
6.0CCK-5332E	4443T	D14
6.0CCK-5332P	4443T	E1
6.0CCK-331E	5277T	E2
6.0CCK-331P	5277T	E3
6.0CCK-331E	5289T	E4
6.0CCK-332P	5289T	E5
6.0CCK-5332P	5289T	E6
6.0CCK-331E	5305T	E7
6.0CCK-331E	7542T	E8
6.0CCK-5331P	7545L	E9
6.0CCK-5331P	8000T	E10
6.0CCK-5332P	8000T	E11
6.0CCK-331E	8474T	E12
6.0CCK-331P	8474T	E13
6.0CCK-5331E	8474T	E14
6.0CCK-5332P	8474T	F1
6.0CCK-331E	13569L	F2
6.0CCK-331P	13569L	F3
6.0CCK-331E	13569T	F4
6.0CCK-331P	13569T	F5
6.0CCK-332E	13569T	F6
6.0CCK-331E	13599L	F7
6.0CCK-331E	13599T	F8
6.0CCK-332E	13599T	F9
6.0CCK-5331E	14487L	F10
6.0CCK-331E	15686L	F11
6.0CCK-331E	15686T	F12
6.0CCK-5332P	16370T	F13
6.0CCK-5332P	17886T	F14

MODEL	SPEC.	FICHE LOCATION
6.0CCK-331E	18256T	G1
6.0CCK-331P	18582T	G2
6.0CCK-332E	18582T	G3
6.0CCK-332P	18582T	G4
6.0CCK-5332E	18582T	G5
6.0CCK-5332	18582T	G6
6.0CCK-5332P	18765T	G7
6.0CCK-331P	19143T	G8
6.0CCK-5332P	19983T	G9
6.0CCK-331E	18582T	G10
6.0CCK-5331P	20034T	G11
6.0CCK-5332P	20034T	G12
6.0CCK-5332P	21745T	G13

SPECIAL PARTS LIST FOR MODEL 6.0CCK-5332E38 SPEC 1L
 FOR STANDARD PARTS REFER TO CATALOG 927-1031 KEY NO. 2
 (PARTS CATALOG ALSO CONTAINS COMPONENTS FOR MAJOR OPTIONAL FEATURES LISTED BELOW)

WIRING DIAGRAM NO. 606-0162-01

PART NO.	QTY.	DESCRIPTION	PART NO.	QTY.	DESCRIPTION
222-1558	1	Coil Assembly, Field			
201-1187	1	Rotor Assembly, Wound			
321-0106	2	Holder, Fuse			
321-0138	2	Fuse, 15 Amp.			
332-0609	1	Block, Terminal			
332-0610	1	Strip, Marker			
301-2668	1	Guard, Terminal			
301-2667	1	Guard, Resistor			
301-2665	1	Box, Control			

PART NO.	QTY.	DESCRIPTION	PART NO.	QTY.	DESCRIPTION
222-1558	1	Coil Assembly, Field			

SPECIAL PARTS LIST FOR MODEL 6.0CCK-331P SPEC 1T
FOR STANDARD PARTS REFER TO CATALOG 927-1031 KEY NO. 1
(PARTS CATALOG ALSO CONTAINS COMPONENTS FOR MAJOR OPTIONAL FEATURES LISTED BELOW)
WIRING DIAGRAM NO. 602-0205-01

PART NO.	QTY.	DESCRIPTION	PART NO.	QTY.	DESCRIPTION
222-1560	1	Coil Assembly, Field			

FOR STANDARD PARTS REFER TO CATALOG 927-1031 KEY NO. 1
(PARTS CATALOG ALSO CONTAINS COMPONENTS FOR MAJOR OPTIONAL FEATURES LISTED BELOW)

WIRING DIAGRAM NO. 602-0204-01

PART NO.	QTY.	DESCRIPTION	PART NO.	QTY.	DESCRIPTION
201-1059	1	Rotor Assembly, Wound			
222-1560	1	Coil Assembly, Field			

PART NO.	QTY.	DESCRIPTION	PART NO.	QTY.	DESCRIPTION
201-1195	1	Rotor Assembly, Wound			
222-1560	1	Coil Assembly, Field			

SPECIAL PARTS LIST FOR MODEL 6.0CCK-5332E SPEC 1T
FOR STANDARD PARTS REFER TO CATALOG 927-1031 KEY NO. 2
(PARTS CATALOG ALSO CONTAINS COMPONENTS FOR MAJOR OPTIONAL FEATURES LISTED BELOW)
WIRING DIAGRAM NO. 606-0139-01

PART NO.	QTY.	DESCRIPTION	PART NO.	QTY.	DESCRIPTION
201-1187	1	Rotor Assembly, Wound			
222-1558	1	Coil Assembly, Field			

SPECIAL PARTS LIST FOR MODEL 6.0CCK-5332P SPEC IT
FOR STANDARD PARTS REFER TO CATALOG 927-1031 KEY NO. 1
(PARTS CATALOG ALSO CONTAINS COMPONENTS FOR MAJOR OPTIONAL FEATURES LISTED BELOW)
WIRING DIAGRAM NO. 602-0204-01

PART NO.	QTY.	DESCRIPTION	PART NO.	QTY.	DESCRIPTION
201-1187	1	Rotor Assembly, Wound			
222-1560	1	Coil Assembly, Field			

FOR STANDARD PARTS REFER TO CATALOG 927-1031 KEY NO. 1
(PARTS CATALOG ALSO CONTAINS COMPONENTS FOR MAJOR OPTIONAL FEATURES LISTED BELOW)

222-1560	1	Coil Assembly, Field
321-0106	2	Holder, Fuse
321-0138	2	Fuse, 15 Amp.
332-0609	1	Block, Terminal
332-0610	1	Strip, Marker
301-2668	1	Guard, Terminal
301-2666	1	Box, Control

SPECIAL PARTS LIST FOR MODEL 6.0CCK-331E SPEC 38T
 FOR STANDARD PARTS REFER TO CATALOG 927-1031 KEY NO. 2
 (PARTS CATALOG ALSO CONTAINS COMPONENTS FOR MAJOR OPTIONAL FEATURES LISTED BELOW)

WIRING DIAGRAM NO. 606-0161-01

PART NO.	QTY.	DESCRIPTION	PART NO.	QTY.	DESCRIPTION
222-1558	1	Coil Assembly, Field			
321-0106	2	Holder, Fuse			
321-0138	2	Fuse, 15 Amp.			
332-0609	1	Block, Terminal			
332-0610	1	Strip, Marker			
301-2668	1	Guard, Terminal			
301-2667	1	Guard, Resistor			
301-2665	1	Box, Control			

SPECIAL PARTS LIST FOR MODEL 6.0CCK-331P SPEC 38T
FOR STANDARD PARTS REFER TO CATALOG 927-1031 KEY NO. 1
(PARTS CATALOG ALSO CONTAINS COMPONENTS FOR MAJOR OPTIONAL FEATURES LISTED BELOW)

WIRING DIAGRAM NO. 606-0224-01

PART NO.	QTY.	DESCRIPTION	PART NO.	QTY.	DESCRIPTION
222-1560	1	Coil Assembly, Field			
321-0106	2	Holder, Fuse			
321-0138	2	Fuse, 15 Amp.			
332-0609	1	Block, Terminal			
332-0610	1	Strip, Marker			
301-2668	1	Guard, Terminal			
301-2666	1	Box, Control			

SPECIAL PARTS LIST FOR MODEL 6.0CCK-5331E SPEC 38T
 FOR STANDARD PARTS REFER TO CATALOG 927-1031 KEY NO. 2
 (PARTS CATALOG ALSO CONTAINS COMPONENTS FOR MAJOR OPTIONAL FEATURES LISTED BELOW)
 WIRING DIAGRAM NO. 606-0161-01

PART NO.	QTY.	DESCRIPTION	PART NO.	QTY.	DESCRIPTION
222-1558	1	Coil Assembly, Field			
321-0106	2	Holder, Fuse			
321-0138	2	Fuse, 15 Amp.			
332-0609	1	Block, Terminal			
332-0610	1	Strip, Marker			
301-2668	1	Guard, Terminal			
301-2667	1	Guard, Resistor			
301-2665	1	Box, Control			
201-1195	1	Rotor Assembly, Wound			

SPECIAL PARTS LIST FOR MODEL 6.0CCK-5332P SPEC 38T
FOR STANDARD PARTS REFER TO CATALOG 927-1031 KEY NO. 1
(PARTS CATALOG ALSO CONTAINS COMPONENTS FOR MAJOR OPTIONAL FEATURES LISTED BELOW)

WIRING DIAGRAM NO. 602-0225-01

PART NO.	QTY.	DESCRIPTION	PART NO.	QTY.	DESCRIPTION
201-1187	1	Rotor Assembly, Wound			
222-1560	1	Coil Assembly, Field			
321-0106	2	Holder, Fuse			
321-0138	2	Fuse, 15 Amp.			
332-0609	1	Block, Terminal			
332-0610	1	Strip, Marker			
301-2668	1	Guard, Terminal			
301-2666	1	Box, Control			

SPECIAL PARTS LIST FOR **MODEL** 6.0CCK-331E **SPEC** 4325T
 FOR STANDARD PARTS REFER TO **CATALOG** 927-1031 **KEY NO.** 2
 (PARTS CATALOG ALSO CONTAINS COMPONENTS FOR MAJOR OPTIONAL FEATURES LISTED BELOW)
WIRING DIAGRAM NO. 606-0138-01

PART NO.	QTY.	DESCRIPTION	PART NO.	QTY.	DESCRIPTION
222-1558	1	Coil Assembly, Field			

WIRING DIAGRAM NO. 606-0138-01

Redistribution or publication of this document
by any means, is strictly prohibited.

SPECIAL PARTS LIST FOR MODEL 6.0CCK-5332E **SPEC** 4325T
FOR STANDARD PARTS REFER TO CATALOG 927-1031 **KEY NO.** 2
 (PARTS CATALOG ALSO CONTAINS COMPONENTS FOR MAJOR OPTIONAL FEATURES LISTED BELOW)
WIRING DIAGRAM NO. 606-0139-01

PART NO.	QTY.	DESCRIPTION	PART NO.	QTY.	DESCRIPTION
201-1187	1	Rotor Assembly, Wound			
222-1558	1	Coil Assembly, Field			

SPECIAL PARTS LIST FOR MODEL 6.0CCK-5332P SPEC 4325T
FOR STANDARD PARTS REFER TO CATALOG 927-1031 KEY NO. 1
(PARTS CATALOG ALSO CONTAINS COMPONENTS FOR MAJOR OPTIONAL FEATURES LISTED BELOW)
WIRING DIAGRAM NO. 602-0204-01

PART NO.	QTY.	DESCRIPTION	PART NO.	QTY.	DESCRIPTION
201-1187	1	Rotor Assembly, Wound			
222-1560	1	Coil Assembly, Field			

SPECIAL PARTS LIST FOR MODEL 6.0CCK-331E SPEC 4443T
FOR STANDARD PARTS REFER TO CATALOG 927-1031 KEY NO. 2
(PARTS CATALOG ALSO CONTAINS COMPONENTS FOR MAJOR OPTIONAL FEATURES LISTED BELOW)

WIRING DIAGRAM NO. 606-0138-01

PART NO.	QTY.	DESCRIPTION	PART NO.	QTY.	DESCRIPTION
222-1558	1	Coil Assembly, Field			

SPECIAL PARTS LIST FOR MODEL 6.0CCK-331P SPEC 4443T
FOR STANDARD PARTS REFER TO CATALOG 927-1031 KEY NO. 1
(PARTS CATALOG ALSO CONTAINS COMPONENTS FOR MAJOR OPTIONAL FEATURES LISTED BELOW)
WIRING DIAGRAM NO. 602-0205-01

PART NO.	QTY.	DESCRIPTION	PART NO.	QTY.	DESCRIPTION
222-1560	1	Coil Assembly, Field			



WIRING DIAGRAM NO. 602-0205-01

PART NO.	QTY.	DESCRIPTION	PART NO.	QTY.	DESCRIPTION
201-1195	1	Rotor Assembly, Wound			
222-1560	1	Coil Assembly, Field			

SPECIAL PARTS LIST FOR MODEL 6.0CCK-S332E SPEC 4443T
 FOR STANDARD PARTS REFER TO CATALOG 927-1031 KEY NO. 2
 (PARTS CATALOG ALSO CONTAINS COMPONENTS FOR MAJOR OPTIONAL FEATURES LISTED BELOW)
 WIRING DIAGRAM NO. 606-0139-01

PART NO.	QTY.	DESCRIPTION	PART NO.	QTY.	DESCRIPTION
201-1187	1	Rotor Assembly, Wound			
222-1558	1	Coil Assembly, Field			

SPECIAL PARTS LIST FOR MODEL 6.0CCK-5332P SPEC 4443T
FOR STANDARD PARTS REFER TO CATALOG 927-1031 KEY NO. 1
(PARTS CATALOG ALSO CONTAINS COMPONENTS FOR MAJOR OPTIONAL FEATURES LISTED BELOW)
WIRING DIAGRAM NO. 602-0204-01

PART NO.	QTY.	DESCRIPTION	PART NO.	QTY.	DESCRIPTION
201-1187	1	Rotor Assembly, Wound			
222-1560	1	Coil Assembly, Field			

SPECIAL PARTS LIST FOR MODEL 6.0CCK-331E SPEC 5277T
FOR STANDARD PARTS REFER TO CATALOG 927-1031 KEY NO. 2
(PARTS CATALOG ALSO CONTAINS COMPONENTS FOR MAJOR OPTIONAL FEATURES LISTED BELOW)
WIRING DIAGRAM NO. 606-0138-01

PART NO.	QTY.	DESCRIPTION	PART NO.	QTY.	DESCRIPTION
222-1558	1	Coil Assembly, Field			



SPECIAL PARTS LIST FOR MODEL 6.0CCK-331P SPEC 5277T
FOR STANDARD PARTS REFER TO CATALOG 927-1031 KEY NO. 1
(PARTS CATALOG ALSO CONTAINS COMPONENTS FOR MAJOR OPTIONAL FEATURES LISTED BELOW)
WIRING DIAGRAM NO. 602-0205-01

PART NO.	QTY.	DESCRIPTION	PART NO.	QTY.	DESCRIPTION
222-1560	1	Coil Assembly, Field			



Power
Generation

Dec 1, 1978

Revised

Page 1 of 1
Redistribution or publication of this document
by any means, is strictly prohibited.

SPECIAL PARTS LIST FOR MODEL 6.0CCK-331E SPEC 5289T
FOR STANDARD PARTS REFER TO CATALOG 927-1031 KEY NO. 2
(PARTS CATALOG ALSO CONTAINS COMPONENTS FOR MAJOR OPTIONAL FEATURES LISTED BELOW)
WIRING DIAGRAM NO. 606-0138-01

PART NO.	QTY.	DESCRIPTION	PART NO.	QTY.	DESCRIPTION
222-1558	1	Coil Assembly, Field			

FOR STANDARD PARTS REFER TO CATALOG 927-1031 KEY NO. 1
(PARTS CATALOG ALSO CONTAINS COMPONENTS FOR MAJOR OPTIONAL FEATURES LISTED BELOW)

201-1059	1	Rotor Assembly, Wound
222-1560	1	Coil Assembly, Field

SPECIAL PARTS LIST FOR MODEL 6.0CCK-5332P SPEC 5289T
FOR STANDARD PARTS REFER TO CATALOG 927-1031 KEY NO. 1
(PARTS CATALOG ALSO CONTAINS COMPONENTS FOR MAJOR OPTIONAL FEATURES LISTED BELOW)
WIRING DIAGRAM NO. 602-0204-01

PART NO.	QTY.	DESCRIPTION	PART NO.	QTY.	DESCRIPTION
201-1187	1	Rotor Assembly, Wound			
222-1560	1	Coil Assembly, Field			

SPECIAL PARTS LIST FOR MODEL 6.0CCK-331E SPEC 5305T
 FOR STANDARD PARTS REFER TO CATALOG 927-1031 KEY NO. 2
 (PARTS CATALOG ALSO CONTAINS COMPONENTS FOR MAJOR OPTIONAL FEATURES LISTED BELOW)

WIRING DIAGRAM NO. 606-0154-01

PART NO.	QTY.	DESCRIPTION	PART NO.	QTY.	DESCRIPTION
Liquid Petroleum Fuel System					
152-0171	1	Plate, Adjusting - Speed Lever Travel			
150-0501	1	Link, Governor Arm to Carb			
145-0316	1	Ring, Adapter - Carb to Air Cleaner			
110-0893	4	Washer, Valve Spring Retainer			
140-0596	1	Spacer, Air Cleaner Housing			
222-1558	1	Coil Assembly, Fiedl			
301-1926	1	Box, Control			

SPECIAL PARTS LIST FOR **MODEL** 6.0CCK-331E **SPEC** 7542T
FOR STANDARD PARTS REFER TO **CATALOG** 927-1031 **KEY NO.** 2
(PARTS CATALOG ALSO CONTAINS COMPONENTS FOR MAJOR OPTIONAL FEATURES LISTED BELOW)
WIRING DIAGRAM NO. 606-0138-01

PART NO.	QTY.	DESCRIPTION	PART NO.	QTY.	DESCRIPTION
222-1558	1	Coil Assembly, Field			

SPECIAL PARTS LIST FOR **MODEL** 6.0CCK-5331P **SPEC** 7545L
FOR STANDARD PARTS REFER TO **CATALOG** 927-2031 **KEY NO.** 1
(PARTS CATALOG ALSO CONTAINS COMPONENTS FOR MAJOR OPTIONAL FEATURES LISTED BELOW)
WIRING DIAGRAM NO. 602-0205-01

PART NO.	QTY.	DESCRIPTION	PART NO.	QTY.	DESCRIPTION
201-1195	1	Rotor Assembly, Wound			
222-1560	1	Stator Assembly, Wound			

SPECIAL PARTS LIST FOR MODEL 6.0CCK-5332P SPEC 8000T
 FOR STANDARD PARTS REFER TO CATALOG 927-1031 KEY NO. 1
 (PARTS CATALOG ALSO CONTAINS COMPONENTS FOR MAJOR OPTIONAL FEATURES LISTED BELOW)
 WIRING DIAGRAM NO. 602-0204-01

PART NO.	QTY.	DESCRIPTION	PART NO.	QTY.	DESCRIPTION
201-1187	1	Rotor Assembly, Wound			
222-1560	1	Coil Assembly, Field			

SPECIAL PARTS LIST FOR MODEL 6.0CCK-331E SPEC 8474T
 FOR STANDARD PARTS REFER TO CATALOG 927-1031 KEY NO. 2
 (PARTS CATALOG ALSO CONTAINS COMPONENTS FOR MAJOR OPTIONAL FEATURES LISTED BELOW)
 WIRING DIAGRAM NO. 606-0138-01

PART NO.	QTY.	DESCRIPTION	PART NO.	QTY.	DESCRIPTION
222-1558	1	Coil Assembly, Field			

SPECIAL PARTS LIST FOR MODEL 6.0CCK-331P SPEC 8474T
FOR STANDARD PARTS REFER TO CATALOG 927-1031 KEY NO. 1
(PARTS CATALOG ALSO CONTAINS COMPONENTS FOR MAJOR OPTIONAL FEATURES LISTED BELOW)
WIRING DIAGRAM NO. 602-0205-01

PART NO.	QTY.	DESCRIPTION	PART NO.	QTY.	DESCRIPTION
222-1560	1	Coil Assembly, Field			

SPECIAL PARTS LIST FOR **MODEL** 6.0CCK-5331E **SPEC** 8474T
FOR STANDARD PARTS REFER TO **CATALOG** 927-1031 **KEY NO.** 2
(PARTS CATALOG ALSO CONTAINS COMPONENTS FOR MAJOR OPTIONAL FEATURES LISTED BELOW)
WIRING DIAGRAM NO. 606-0138-01

PART NO.	QTY.	DESCRIPTION	PART NO.	QTY.	DESCRIPTION
222-1558	1	Coil Assembly, Field			
201-1195	1	Rotor Assembly, Wound			

SPECIAL PARTS LIST FOR MODEL 6.0CCK-5332P SPEC 8474T
FOR STANDARD PARTS REFER TO CATALOG 927-1031 KEY NO. 1
(PARTS CATALOG ALSO CONTAINS COMPONENTS FOR MAJOR OPTIONAL FEATURES LISTED BELOW)
WIRING DIAGRAM NO. 602-0204-01

PART NO.	QTY.	DESCRIPTION	PART NO.	QTY.	DESCRIPTION
201-1187	1	Rotor Assembly, Wound			
222-1560	1	Coil Assembly, Field			

SPECIAL PARTS LIST FOR **MODEL** 6.0CCK-331E **SPEC** 13569L
 FOR STANDARD PARTS REFER TO **CATALOG** 927-1031 **KEY NO.** 2
 (PARTS CATALOG ALSO CONTAINS COMPONENTS FOR MAJOR OPTIONAL FEATURES LISTED BELOW)
WIRING DIAGRAM NO. 606-0138-01

PART NO.	QTY.	DESCRIPTION	PART NO.	QTY.	DESCRIPTION
222-1558	1	Coil Assembly, Field			



SPECIAL PARTS LIST FOR MODEL 6.0CCK-331E SPEC 13569T
FOR STANDARD PARTS REFER TO CATALOG 927-1031 KEY NO. 2
(PARTS CATALOG ALSO CONTAINS COMPONENTS FOR MAJOR OPTIONAL FEATURES LISTED BELOW)
WIRING DIAGRAM NO. 606-0138-01

PART NO.	QTY.	DESCRIPTION	PART NO.	QTY.	DESCRIPTION
222-1558	1	Coil Assembly, Field			

SPECIAL PARTS LIST FOR MODEL 6.0CCK-331P SPEC 13569T
FOR STANDARD PARTS REFER TO CATALOG 927-1031 KEY NO. 1
(PARTS CATALOG ALSO CONTAINS COMPONENTS FOR MAJOR OPTIONAL FEATURES LISTED BELOW)
WIRING DIAGRAM NO. 602-0205-01

PART NO.	QTY.	DESCRIPTION	PART NO.	QTY.	DESCRIPTION
222-1560	1	Coil Assembly, Field			

SPECIAL PARTS LIST FOR MODEL 6.0CCG-332E **SPEC** 13569T
FOR STANDARD PARTS REFER TO CATALOG 927-1031 **KEY NO.** 2
(PARTS CATALOG ALSO CONTAINS COMPONENTS FOR MAJOR OPTIONAL FEATURES LISTED BELOW)

WIRING DIAGRAM NO. 606-0139-01

PART NO.	QTY.	DESCRIPTION	PART NO.	QTY.	DESCRIPTION
222-1558	1	Coil Assembly, Field			
201-1059	1	Rotor Assembly, Wound			

SPECIAL PARTS LIST FOR MODEL 6.0CCK-331E SPEC 13599L
 FOR STANDARD PARTS REFER TO CATALOG 927-1031 KEY NO. 2
 (PARTS CATALOG ALSO CONTAINS COMPONENTS FOR MAJOR OPTIONAL FEATURES LISTED BELOW)
 WIRING DIAGRAM NO. 606-0161-01

PART NO.	QTY.	DESCRIPTION	PART NO.	QTY.	DESCRIPTION
222-1558	1	Coil Assembly, Field			
321-0106	2	Holder, Fuse			
321-0138	2	Fuse, 15 Amp.			
332-0609	1	Block, Terminal			
332-0610	1	Strip, Marker			
301-2668	1	Guard, Terminal			
301-2667	1	Guard, Resistor			
301-2665	1	Box, Control			

WIRING DIAGRAM NO. 606-0161-01

222-1558	1	Coil Assembly, Field
321-0106	2	Holder, Fuse
321-0138	2	Fuse, 15 Amp.
332-0609	1	Block, Terminal
332-0610	1	Strip, Marker
301-2668	1	Guard, Terminal
301-2667	1	Guard, Resistor
301-2665	1	Box, Control

SPECIAL PARTS LIST FOR MODEL 6.0CCK-332E SPEC 13599T
 FOR STANDARD PARTS REFER TO CATALOG 927-1031 KEY NO. 2
 (PARTS CATALOG ALSO CONTAINS COMPONENTS FOR MAJOR OPTIONAL FEATURES LISTED BELOW)
 WIRING DIAGRAM NO. 606-0162-01

PART NO.	QTY.	DESCRIPTION	PART NO.	QTY.	DESCRIPTION
222-1558	1	Coil Assembly, Field			
321-0106	2	Holder, Fuse			
321-0138	2	Fuse, 15 Amp.			
332-0609	1	Block, Terminal			
332-0610	1	Strip, Marker			
301-2668	1	Guard, Terminal			
301-2667	1	Guard, Resistor			
301-2665	1	Box, Control			
201-1059	1	Rotor Assembly, Wound			

SPECIAL PARTS LIST FOR MODEL 6.0CCK-5331E SPEC 14487L
 FOR STANDARD PARTS REFER TO CATALOG 927-1031 KEY NO. 2
 (PARTS CATALOG ALSO CONTAINS COMPONENTS FOR MAJOR OPTIONAL FEATURES LISTED BELOW)
 WIRING DIAGRAM NO. 606-0161-01

PART NO.	QTY.	DESCRIPTION	PART NO.	QTY.	DESCRIPTION
201-1195	1	Rotor Assembly, Wound			
222-1558	1	Coil Assembly, Field			
321-0106	2	Holder, Fuse			
321-0138	2	Fuse, 15 Amp.			
332-0609	1	Block, Terminal			
332-0610	1	Strip, Marker			
301-2668	1	Guard, Terminal			
301-2667	1	Guard, Resistor			
301-2665	1	Box, Control			



SPECIAL PARTS LIST FOR MODEL 6.0CCK-331E SPEC 15686L
 FOR STANDARD PARTS REFER TO CATALOG 927-1031 KEY NO. 2
 (PARTS CATALOG ALSO CONTAINS COMPONENTS FOR MAJOR OPTIONAL FEATURES LISTED BELOW)
 WIRING DIAGRAM NO. 606-0161-01

PART NO.	QTY.	DESCRIPTION	PART NO.	QTY.	DESCRIPTION
222-1558	1	Coil Assembly, Field			
321-0106	2	Holder, Fuse			
321-0138	2	Fuse, 15 Amp.			
332-0609	1	Block, Terminal			
332-0610	1	Strip, Marker			
301-2668	1	Guard, Terminal			
301-2667	1	Guard, Resistor			
301-2665	1	Box, Control			

SPECIAL PARTS LIST FOR MODEL 6.0CCK-331E SPEC 15686T
 FOR STANDARD PARTS REFER TO CATALOG 927-1031 KEY NO. 2
 (PARTS CATALOG ALSO CONTAINS COMPONENTS FOR MAJOR OPTIONAL FEATURES LISTED BELOW)
 WIRING DIAGRAM NO. 606-0161-01

PART NO.	QTY.	DESCRIPTION	PART NO.	QTY.	DESCRIPTION
222-1558	1	Coil Assembly, Field			
321-0106	2	Holder, Fuse			
321-0138	2	Fuse, 15 Amp.			
332-0609	1	Block, Terminal			
332-0610	1	Strip, Marker			
301-2668	1	Guard, Terminal			
301-2667	1	Guard, Resistor			
301-2665	1	Box, Control			

SPECIAL PARTS LIST FOR MODEL 6.0CCK-5332P SPEC 17886T
FOR STANDARD PARTS REFER TO CATALOG 927-1031 KEY NO. 1
(PARTS CATALOG ALSO CONTAINS COMPONENTS FOR MAJOR OPTIONAL FEATURES LISTED BELOW)
WIRING DIAGRAM NO. 602-0204-01

PART NO.	QTY.	DESCRIPTION	PART NO.	QTY.	DESCRIPTION
201-1187	1	Rotor Assembly, Wound			
222-1560	1	Coil Assembly, Field			

SPECIAL PARTS LIST FOR MODEL 6.0CCK-331E SPEC 18256T
FOR STANDARD PARTS REFER TO CATALOG 927-1031 KEY NO. 2
(PARTS CATALOG ALSO CONTAINS COMPONENTS FOR MAJOR OPTIONAL FEATURES LISTED BELOW)

WIRING DIAGRAM NO. 606-0138-01

PART NO.	QTY.	DESCRIPTION	PART NO.	QTY.	DESCRIPTION
222-1558	1	Coil Assembly, Field			

SPECIAL PARTS LIST FOR MODEL 6.0CCK-331P SPEC 18582T
FOR STANDARD PARTS REFER TO CATALOG 927-1031 KEY NO. 1
(PARTS CATALOG ALSO CONTAINS COMPONENTS FOR MAJOR OPTIONAL FEATURES LISTED BELOW)
WIRING DIAGRAM NO. 602-0205-01

PART NO.	QTY.	DESCRIPTION	PART NO.	QTY.	DESCRIPTION
222-1560	1	Coil Assembly, Field			



Power
Generation

Dec 1. 1978

Revised

Redistribution or publication of this document
by any means, is strictly prohibited.

SPECIAL PARTS LIST FOR MODEL 6.0CCK-5332P SPEC 18582T
FOR STANDARD PARTS REFER TO CATALOG 927-1031 KEY NO. 1
(PARTS CATALOG ALSO CONTAINS COMPONENTS FOR MAJOR OPTIONAL FEATURES LISTED BELOW)
WIRING DIAGRAM NO. 602-0204-01

PART NO.	QTY.	DESCRIPTION	PART NO.	QTY.	DESCRIPTION
201-1187	1	Rotor Assembly, Wound			
222-1560	1	Coil Assembly, Field			

SPECIAL PARTS LIST FOR **MODEL** 6.0CCK-331P **SPEC** 19143T
FOR STANDARD PARTS REFER TO **CATALOG** 927-1031 **KEY NO.** 1
(PARTS CATALOG ALSO CONTAINS COMPONENTS FOR MAJOR OPTIONAL FEATURES LISTED BELOW)
WIRING DIAGRAM NO. 602-0205-01

PART NO.	QTY.	DESCRIPTION	PART NO.	QTY.	DESCRIPTION
222-1560	1	Coil Assembly, Field			

PART NO.	QTY.	DESCRIPTION	PART NO.	QTY.	DESCRIPTION
201-1187	1	Rotor Assembly, Wound			
222-1560	1	Coil Assembly, Field			

SPECIAL PARTS LIST FOR **MODEL** 6.0CCK-5331P **SPEC** 20034T
FOR STANDARD PARTS REFER TO **CATALOG** 927-1031 **KEY NO.** 1
(PARTS CATALOG ALSO CONTAINS COMPONENTS FOR MAJOR OPTIONAL FEATURES LISTED BELOW)

WIRING DIAGRAM NO. (ENG) 602-0205-01

PART NO.	QTY.	DESCRIPTION	PART NO.	QTY.	DESCRIPTION

[illegible]

FOR STANDARD PARTS REFER TO CATALOG 927-1031 KEY NO. 1
(PARTS CATALOG ALSO CONTAINS COMPONENTS FOR MAJOR OPTIONAL FEATURES LISTED BELOW)

WIRING DIAGRAM NO. (ENG) 602-0204-01

PART NO.	QTY.	DESCRIPTION	PART NO.	QTY.	DESCRIPTION