

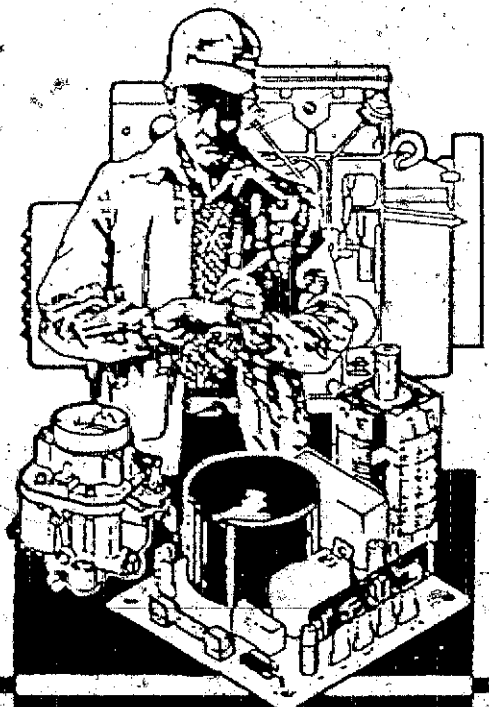
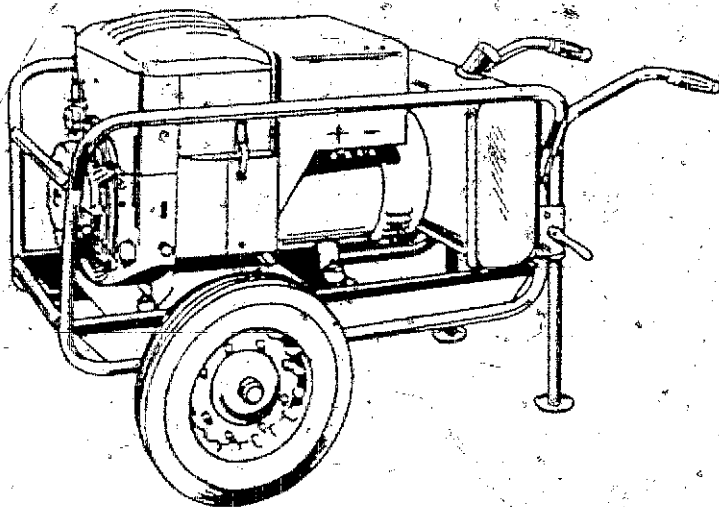
The following catalog
has gaps in its page
numbers, or doesn't
have any numbers.
We have chosen to
leave the page
numbering in the
order that Acrobat
assigns it.

PROPERTY
OF
**SERVICE PARTS
LIBRARY**
DO NOT REMOVE

Onan

Parts Manual

CGK Welder



927-1010
10-64 (Spec A-D)
[Cover/Table of Contents 6-87]
Printed in U.S.A.

Onan Service Parts



**Power
Generation**

Redistribution or publication of this document
by any means, is strictly prohibited.

FIG. A - CYLINDER BLOCK, OIL BASE & GEAR COVER GROUP

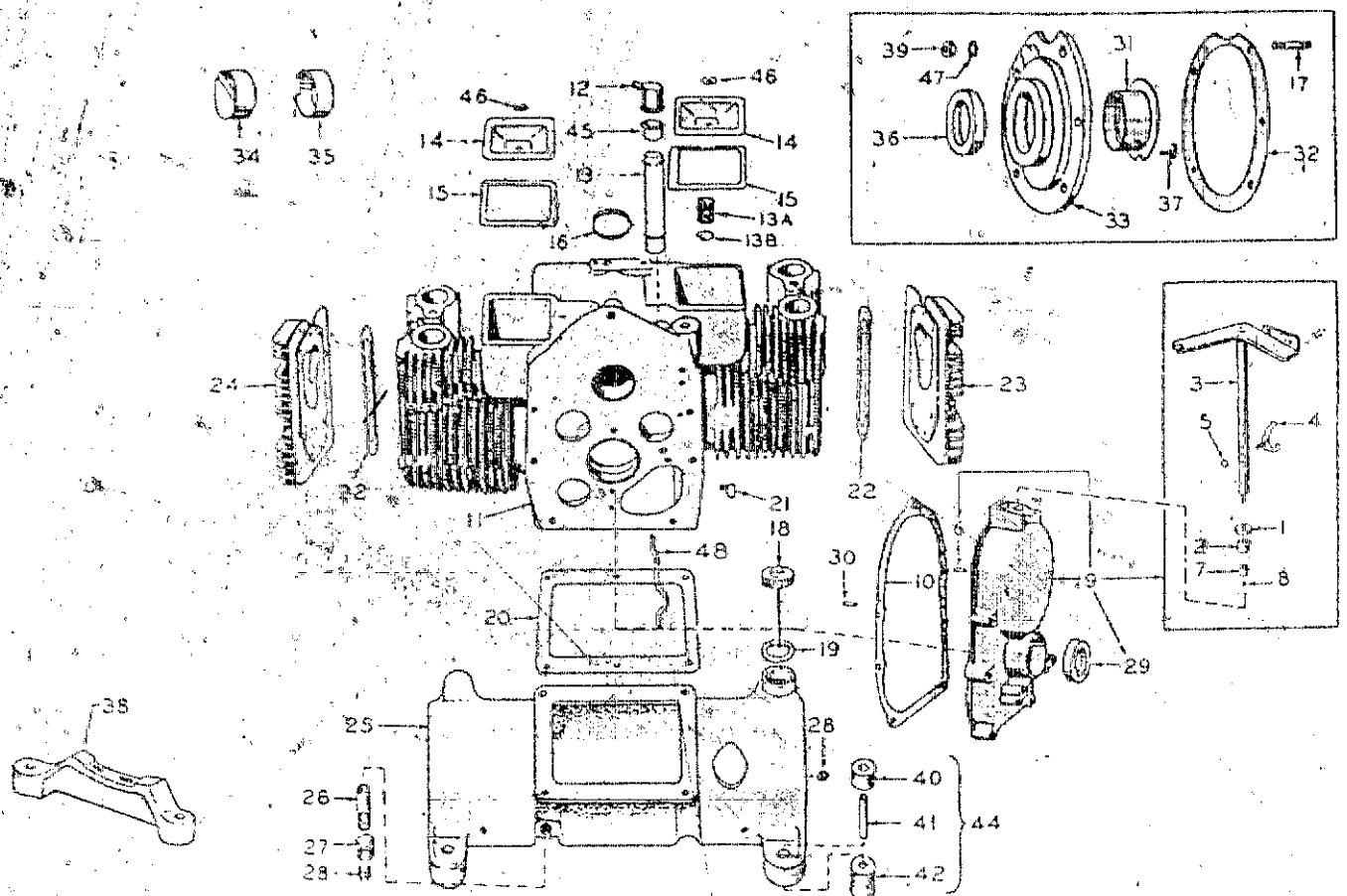
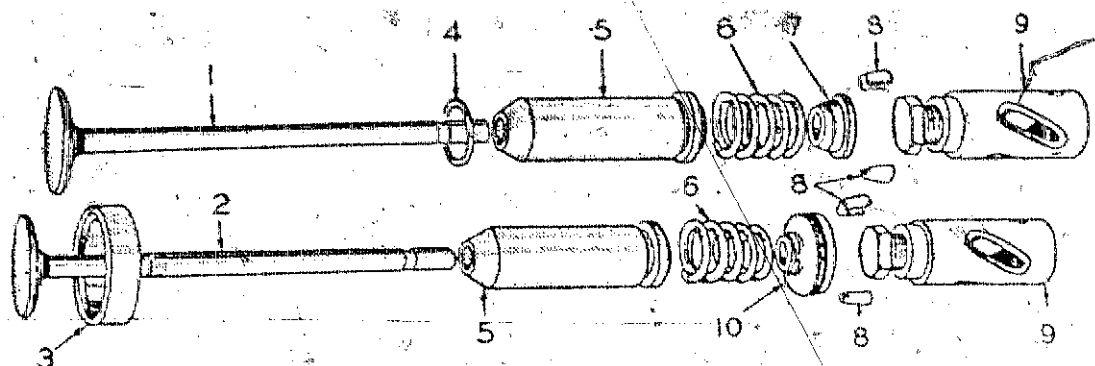


FIG. A - CYLINDER BLOCK, OIL BASE & GEAR COVER GROUP

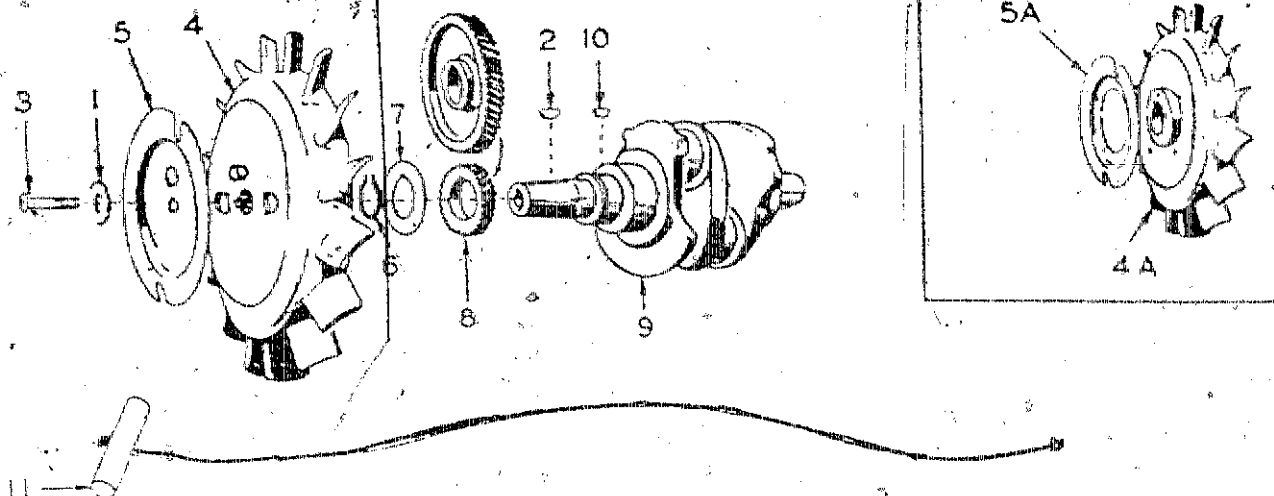
REF. NO.	PART NO.	DESCRIPTION	QUANT USED
1	509-8	Seal, Oil - Governor Shaft	1
2	510-13	Bearing, Governor Shaft Upper	1
3	150B623	Shaft & Arm Assembly, Governor	1
4	150A820	Yoke, Governor Shaft (Replaces #150A238)	1
5	518-129	Ring, Yoke Retainer	1
6	518-130	Pin, Roll - Governor Cup Stop - Located in Gear Cover - 3/16"x7/8"(Replaces #518-117)	1
7	510-8	Bearing, Governor Shaft Lower	1
8	510-14	Bearing, Ball - Governor Shaft	1
9	103C163	Cover Assembly, Gear - Includes Gear Cover and Items 1 thru 8 plus 29	1
10	103B11	Gasket, Gear Cover	1
11	110A915	Block Assembly, Cylinder - Includes Bearing Plate, Plate Studs, Bearings, Dowel Pins, Valve Guides, Valve Seats, Welch Plug	1
12	123B293	Cap, Breather Tube Rubber	1
13	123A129	Tube, Breather - Less Valve, Includes Baffle (Replaces #123A620)	1
13A	123-591	Baffle, Breather Tube - Use began "During Spec D"	1
13B	123A643	Ring, Retainer - Internal - Breather Baffle Supporting (Replaces #112A68)	1
14	110A686	Cover, Valve Compartment	2
15	110A667	Gasket, Valve Cover	2
16	517-48	Plug, Camshaft Expansion (Replaces #517-18)	1
17	520A114	Stud, Rear Bearing Plate Mounting - 5/16" x 1-5/16"	5
18	123A489	Cap, Oil Fill - Includes Oil Level Indicator - For 4 qt. Base	1
19	123A191	Gasket, Oil Fill Cap	1
20	102B158	Gasket, Oil Base Mounting (Replaces #102B8)	1
21	502-20	Elbow, Street - Oil Line	1
22	110A892	Gasket, Cylinder Head	2
23	110D890	Head, Cylinder - Right Hand	1
24	110D891	Head, Cylinder - Left Hand	1
25	102A356	Base, Oil - 4 U.S. Quarts	1
26	505-76	Nipple, Pipe - Oil Drain - 3/8" x 3" (Optional)	1
27	505-28	Coupling, Oil Drain Pipe - 3/8" (Optional)	1
28	505-110	Plug, Pipe - 3/8" - Oil Drain	1
29	509A40	Seal, Oil - Gear Cover (Replaces 509-11)	1
30	516A11	Pin, Gear Cover Dowel - 5/16" x 1-1/8"	2
31	101K181	Bearing, Crankshaft - Front or Rear - Specify: Standard, 0.002" or 0.020" Undersize	2
32	101K115	Gasket Kit, Bearing Plate	1
33	101C256	Plate, Bearing - Excludes Bearing	1
34	101A367	Bearing, Camshaft Front - Precision (Replaces 101A49)	1
35	101A367	Bearing, Camshaft Rear - Precision (Replaces 101A50)	1
36	509A41	Seal, Oil - Bearing Plate (Replaces 509-1)	1
37	516A72	Pin, Main Bearing Stop	2
38	232C1257	Support, Generator - Cast Iron	1
39	110A445	Nut, Bearing Plate	5
40	402A131	Cushion, Plant Mounting - Upper	4
41	402A137	Bushing, Spacer	4
42	402A38	Cushion, Plant Mounting - Lower	4
44	402A145	Cushion Assembly, Plant Mounting - Includes Cushion, Spacer & Hardware	4
45	123A104	Valve, Breather Tube	1
46	526-63	Washer, Copper - Valve Compartment Cover	2
47	851-5	Washer, Lock - 5/16" x Special Width - Rear Bearing Plate	5
	110A8797	Screw, Hex Head Cap - Hardened - 5/16"-18 x 1-1/4" - Cylinder Head	8
	114A22	Screw, Hex Head Cap - Hardened - 5/16"-18 x 1-3/4" - Cylinder Head	10
	800-11	Screw, Valve Compartment Cover - 1/4"-20 x 2"	2
	800-54	Screw, Hex Head Cap - Intake Manifold - 3/8"-16 x 2"	2
	114A22	Screw, Hex Head Cap - Gear Cover - 5/16"-18 x 1-3/4" (Replaces #800-32)	4
	800-34	Screw, Hex Head Cap - Gear Cover - 5/16"-18 x 2-1/4"	1
	102A455	Screw, Hex Head Cap - Oil Base - 3/8"-16 x 1-1/4"	4
	800-56	Screw, Hex Head Cap - Generator Adapter - 3/8"-16 x 1"	4
48	120A826	Line, Oil - Crankcase Internal Line	1

FIG. B - VALVE GROUP



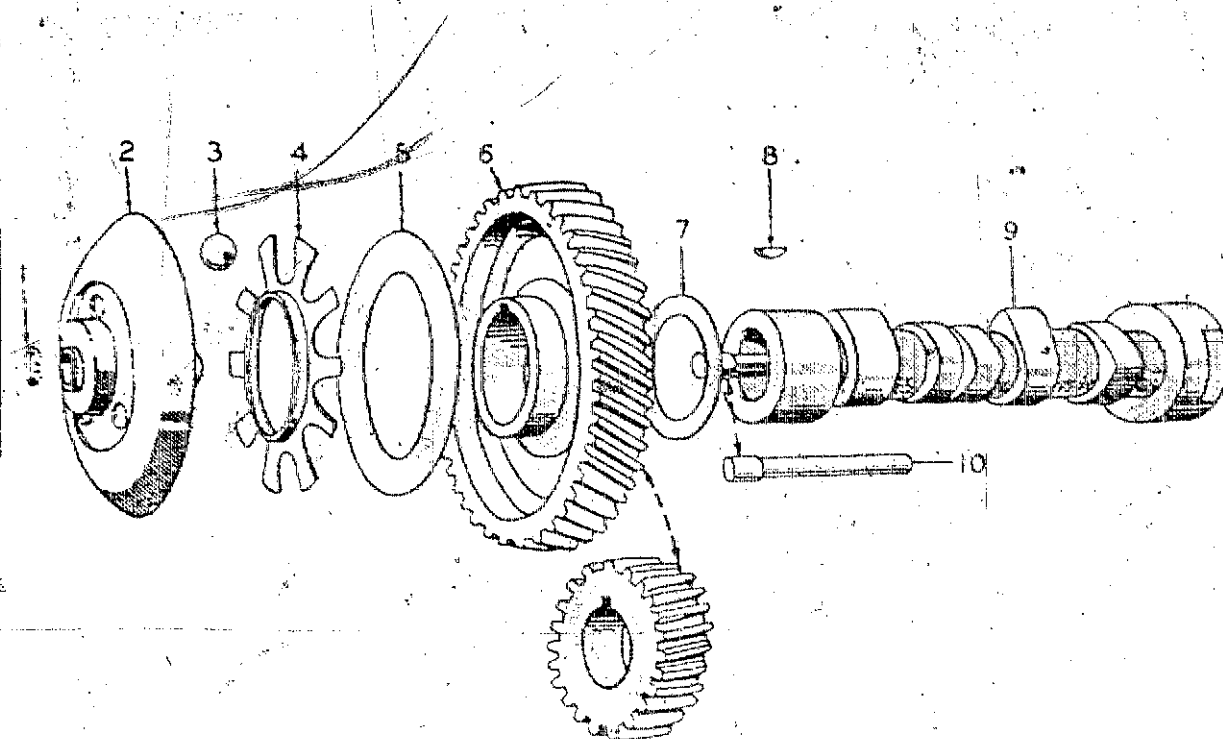
REF. NO.	PART NO.	DESCRIPTION	QUANT USED
1	110B881	Valve, Intake - Steel	2
2	110B880	Valve, Exhaust - Stellite	2
3	110A872	Insert, Exhaust Valve Seat - Stellite	2
4	5C9-30	Seal, "O" Ring - Intake Valve Guide Only	2
5	110A902	Guide, Valve	4
6	110A539	Spring, Valve	4
7	110A893	Washer, Valve Spring Retainer - Intake Only	2
8	110A539	Lock, Rotocap or Spring Retainer Washer	8
9	115A6	Tappet, Valve	4
10	110A904	Rotocap, Exhaust Valve	2

FIG. C - CRANKSHAFT & FLYWHEEL GROUP



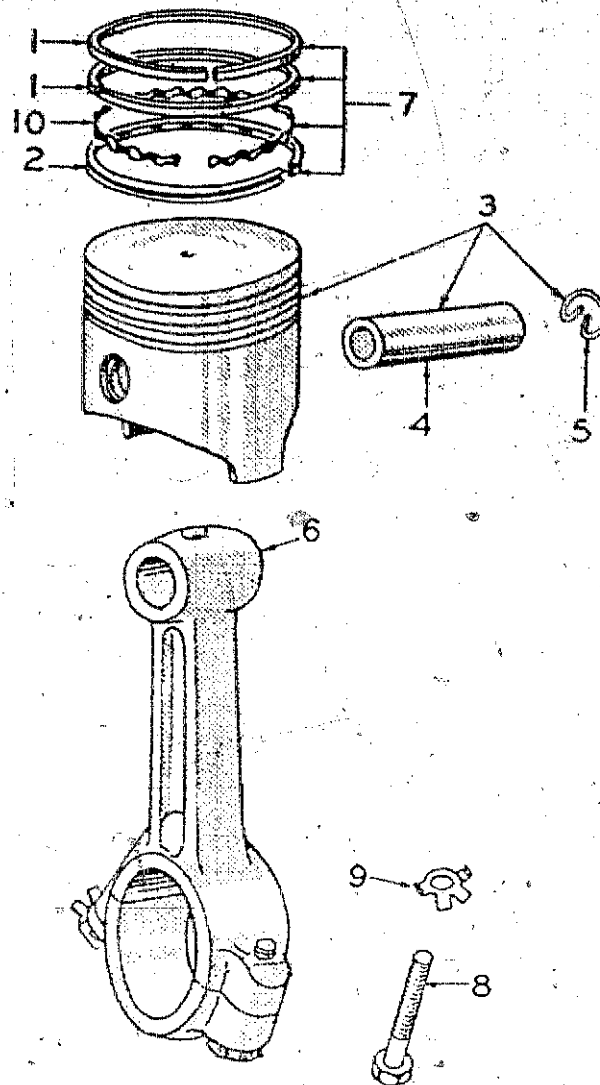
REF. NO.	PART NO.	DESCRIPTION	QUANT USED
1	526A17	Washer, Flywheel Mounting.	1
2	515-2	Key, Flywheel Mounting - Steel.	1
3	104A170	Screw, Flywheel Mounting.	1
4	160D650	Flywheel, Magneto - Less Rope Sheave - Begin with Spec "D" (Replaces #160D616).	1
4A	160D202	Flywheel, Magneto - Less Rope Sheave - Prior to Spec "D".	1
5	192B308	Sheave, Rope - Begin with Spec "D".	1
5A	160B222	Sheave, Rope - Prior to Spec "D".	1
6	518-14	Lock, Crankshaft Gear Washer.	1
7	104A43	Washer, Crankshaft Gear Retainer.	1
8	105A72	Gear Set, Timing - Includes Crankshaft and Camshaft Gears.	1
9	104D256	Crankshaft.	1
10	515-1	Key, Crankshaft Gear Mounting.	1
11	192A83	Rope, Starting - For Rope Sheave Only.	1
	512-150	Screw, Round Head - 1/4"-20 x 5/8" - Rope Sheave - Prior to Spec "D".	4

FIG. D - CAMSHAFT GROUP



REF. NO.	PART NO.	DESCRIPTION	QUANT USED
1	150A73	Ring, Camshaft Center Pin Snap	1
2	150A612	Cup, Governor	1
3	510-15	Ball, Governor Fly	10
4	150B85	Spacer, Governor Fly Ball	1
5	150A77	Plate, Governor Fly Ball	1
6	105A72	Gear Set, Timing - Includes Crankshaft & Camshaft Gears	1
7	105A4	Washer, Thrust - Camshaft Gear	1
8	515-1	Key, Camshaft Gear Mounting	1
9	105-140	Camshaft - Includes Center Pin	1
10	150A75	Pin, Camshaft Center	1

FIG. E - CONNECTING ROD & PISTON GROUP



REF. NO.	PART NO.	DESCRIPTION	QUANT. USED
1	113A82	Ring, Compression - Specify: Standard, .010", .020" or .030" Oversize	4
2	113A86	Ring, Oil Control - Specify: Standard, .010", .020" or .030" Oversize	2
3	112-71	Piston & Pin - Includes Retaining Rings - Specify: Standard Size or .010", .020" or .030" Oversize	2
4	112A69	Pin, Piston - Specify: Standard, or .002" Oversize	2
5	112A3	Ring, Piston Pin Retaining	4
6	114C98	Rod, Connecting - Specify: Standard, or .020" Undersize	2
7	113A88	Ring Set, Piston - For one Piston Only - Specify: Standard, .010", .020" or .030" Oversize	2
8	110A284	Screw, Connecting Rod Cap (Replaces #114A10)	4
9	114A59	Washer, Connecting Rod Cap Screw Lock	4
10	113A85	Expander, Oil Ring	2

FIG. F - FUEL SYSTEM GROUP

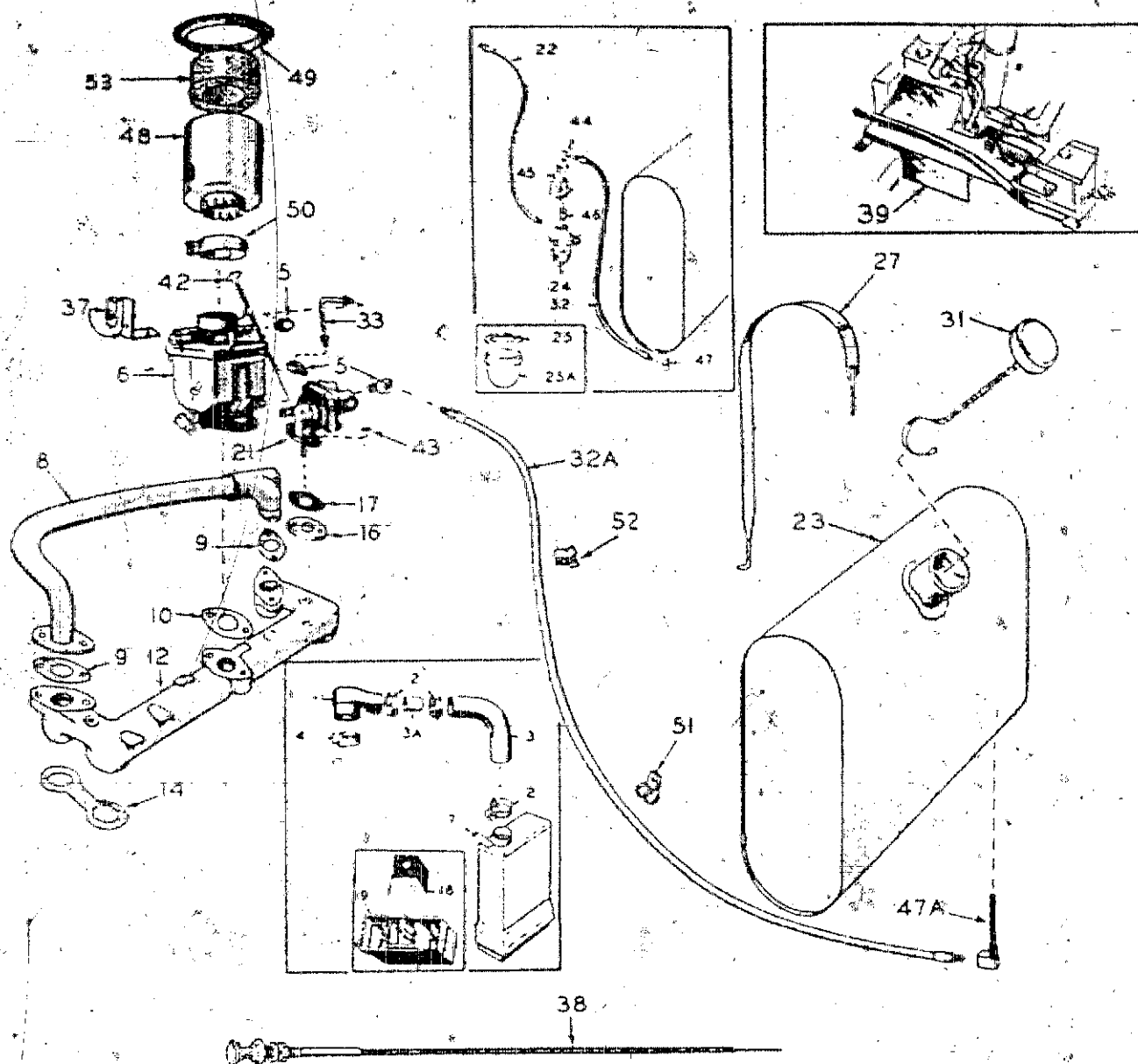


FIG. F - FUEL SYSTEM GROUP

REF. NO.	PART NO.	DESCRIPTION	QUANT USED
1	145B80	Inlet, Carburetor Air-Use Prior to Spec C.....	1
2	503-280	Clamp, Air Cleaner Hose-Use Prior to Spec C.....	3
3	503A286	Hose, Air Cleaner-Use Prior to Spec C.....	1
3A	140A211	Sleeve, Air Cleaner Hose-Use Prior to Spec C.....	1
4	503-107	Clamp, Air Inlet to Carburetor-Use Prior to Spec C.....	1
5	502-2	Elbow, Inverted Male - (2) Fuel Pump, (1) Carburetor.....	3
6	142A388	Carburetor, Gasoline (Replaces either #142A383 or #142A383).....	1
7	140C399	Cleaner, Air-Use Prior to Spec C.....	1
8	154C372	Manifold, Exhaust.....	1
9	154A360	Gasket, Exhaust Manifold.....	2
10	141A78	Gasket, Carburetor Mounting.....	1
12	154D356	Manifold, Intake.....	1
14	154A13	Gasket, Intake Manifold.....	2
16	149A45	Spacer, Fuel Pump.....	1
17	149A3	Gasket, Fuel Pump Mounting.....	2
18	140A68	Screen, Air Cleaner-Use Prior to Spec C.....	1
19	140K403	Cup Kit, Air Cleaner - Includes Screen (Replaces #140A405) Use Prior to Spec C.....	1
21	149D593	Pump, Fuel - With Priming Lever (Replaces either #149C802 or #149D890).....	1
22	501A4	Line, Flexible Fuel - Fuel Filter to Pump, 12" - Prior to Serial #549036.....	1
23	159C558	Tank, Fuel - 6 U.S. Gallon.....	1
24	149B79	Filter, Fuel-Prior to Serial #549036.....	1
25	149-149	Gasket, Fuel Filter Bowl-Prior to Serial #549036.....	1
25A	149-150	Bowl, Fuel Filter-Prior to Serial #549036.....	1
27	159A588	Strap, Fuel Tank Mounting (Replaces #159A550).....	2
31	159B20	Cap, Fuel Tank.....	1
32	501A7	Line, Fuel - Tank to Bracket - Flexible, 24" - Prior to Serial #549036.....	1
32A	501A9	Line, Flex - 36" Begin With Serial #549036.....	1
33	149A611	Line, Fuel - Fuel Pump to Carburetor.....	1
37	153-263	Bracket & Clip, Manual Choke (Replaces previously used bracket).....	1
38	153E97	Choke, Manual.....	1
39	134C819	Shield, Fuel Pump Heat - Begin Serial #568829.....	1
	542K46	Correction Kit, Vapor Lock - Includes Heat Shield, Gasket, Carburetor Valve & Seat, and Hardware - Models Prior to Serial #568829.....	1
42	149A648	Rod, Fuel Pump Primer - (Replaces #149A271).....	1
43	526-63	Washer, Flat Copper - Fuel Pump Mounting.....	2
44	502-2	Elbow, Inverted Male - Filter Bracket-Prior to Serial #549036.....	1
45	149A640	Bracket, Fuel Filter - Includes Coupling-Prior to Serial #549036.....	1
46	502-46	Nipple, Close - 1/8" Brass Pipe - Bracket to Filter Inlet-Prior to Serial #549036.....	1
47	502-20	Elbow, Street - Fuel Tank Outlet-Prior to Serial #549036.....	1
47A	149A117	Elbow & Screen, Assembly - Begin With Serial #549036.....	1
	149K526	Repair Kit, Fuel Pump - If not available use 149K74.....	1
	142K387	Repair Kit, Carburetor (Replaces #142K371).....	1
	142-33	Gasket Kit, Carburetor.....	1
48	140A439	Cleaner, Air - Complete - Includes Element, Gasket and Clamp - Use Begin with Spec C.....	1
49	140A434	Gasket, Air Cleaner - Begin with Spec C.....	1
50	503-19	Clamp, Air Cleaner- Begin with Spec C.....	1
51	332-52	Clip, Fuel Line - #5 - Begin with Serial #549036 during Spec "C".....	1
52	518P178	Clip, Fuel Line - Begin with Spec "D".....	1
53	140P452	Element, Air Cleaner - Begin with Spec "C".....	1

FIG. G - CARBURETOR PARTS GROUP

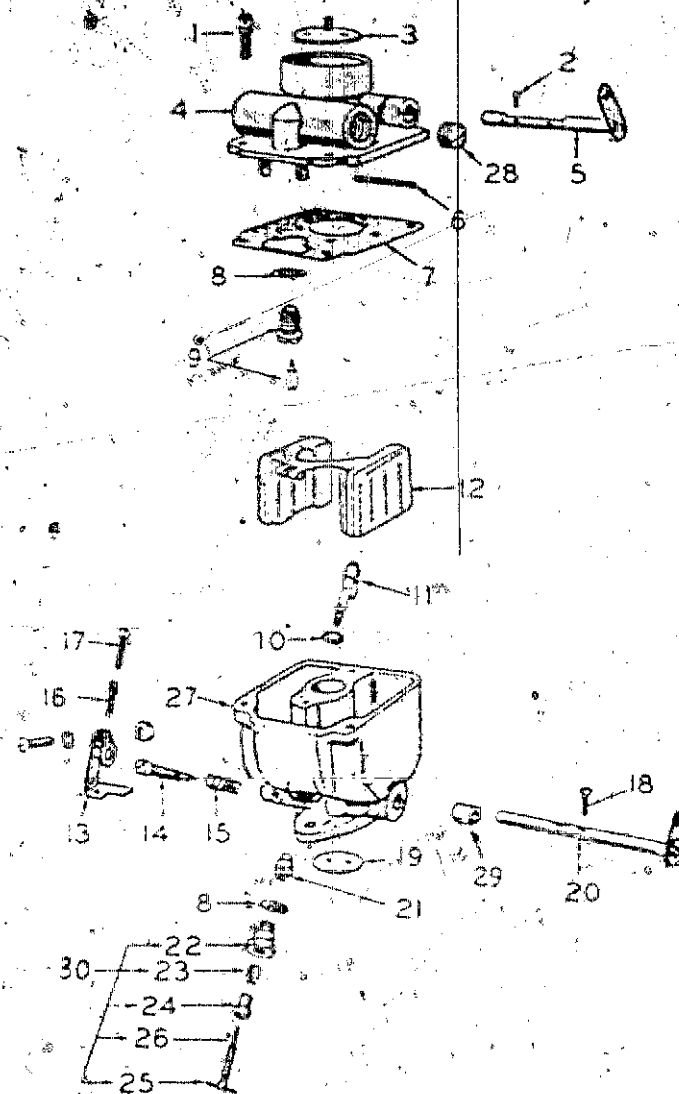
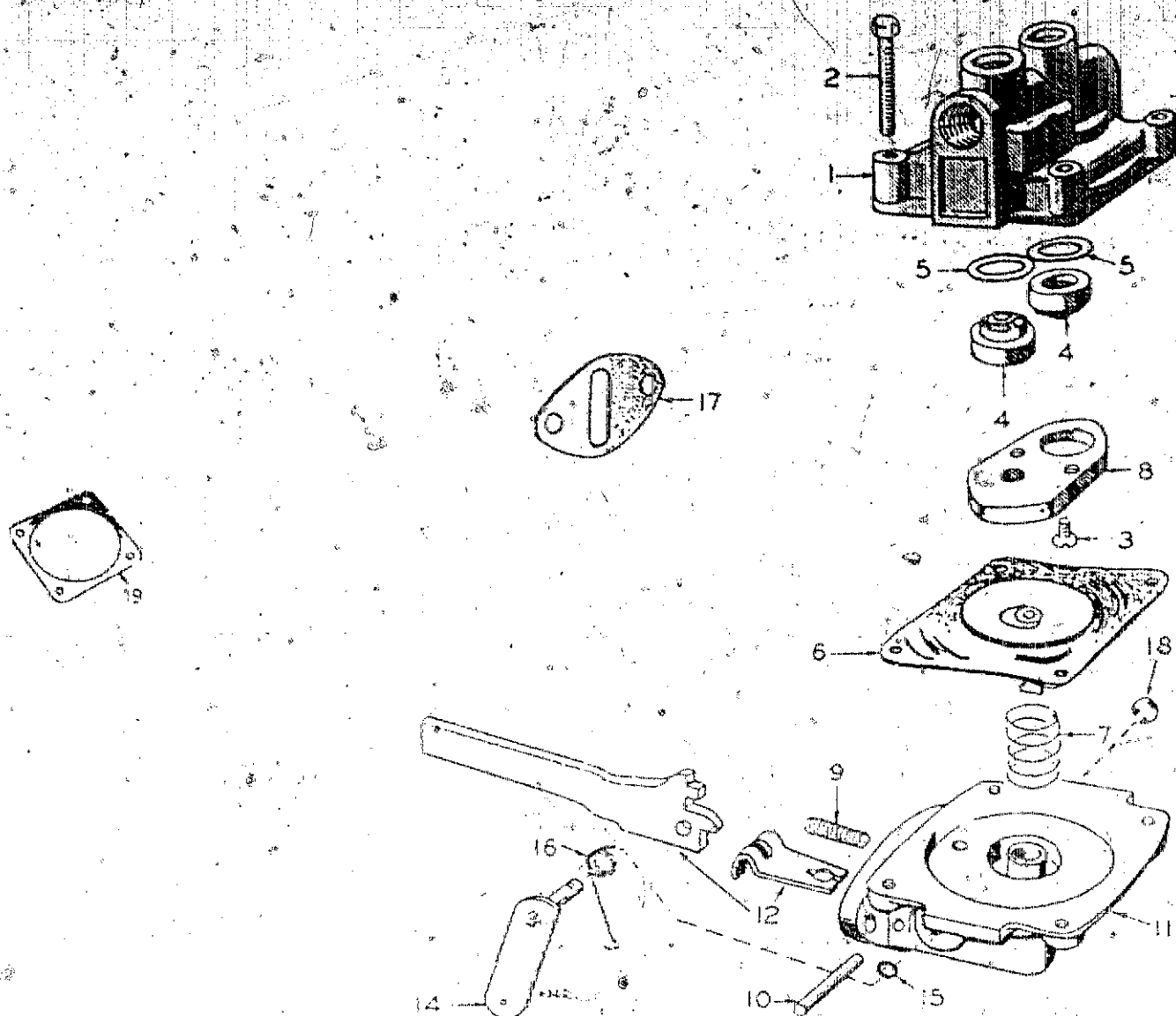


FIG. G - CARBURETOR PARTS GROUP

REF. NO.	PART NO.	DESCRIPTION	QUANT. USED
	142A386	Carburetor, Gasoline (Replaces either #142A363 or #142A383)	1
1	815-103	Screw, Bowl Cover - #10-24 x 1/2"	1
1	815-109	Screw, Bowl Cover - #10-24 x 5/8"	2
2	815-91	*Screw, Choke Fly - #4-40 x 3/16" (Replaces #142-28)	2
3	142-55	Fly Assembly, Choke	1
4	142-205	Sleeve Assembly, Choke	1
5	142-217	Shaft Assembly, Choke	1
6	142-39	*Shaft, Float	1
7	142-31	Gasket, Body to Bowl	1
8	148A17	Gasket, Float Valve Seat and Main Adjusting Needle Retainer	2
9	142-356	*Valve and Seat Assembly, Float - Includes Gasket (Replaces #142-49)	1
10	142-32	Gasket, Nozzle	1
11	142-285	Nozzle Assembly	1
12	142-38	Float and Lever Assembly	1
13	145A8	Lever, Idle Stop	1
14	142-40	Needle, Idle Adjusting	1
15	142-282	Spring, Idle Needle Adjusting	1
16	142A35	Spring, Throttle Stop Adjusting Screw	1
17	812-63	Screw, Throttle Stop Adjusting - #6-32 x 1/2"	1
18	815-72	*Screw, Throttle Fly - #4-40 x 1/4	2
19	142-369	Fly, Throttle	1
20	142-368	*Shaft Assembly, Throttle	1
21	142-370	Nut & Jet, Nozzle	1
22	142-46	Retainer, Main Adjusting Needle	1
23	142-206	Packing, Main Adjusting Needle	1
24	142-45	Retainer, Main Adjusting Needle Packing	1
25	516A27	Pin, Main Adjusting Needle	1
26	142-41	*Needle, Main Adjusting	1
27		Body Assembly - Not Sold Separately	1
28	505-53	Plug, Gas Inlet	1
29	142-343	Bushing, Throttle Shaft	2
30	142-42	Needle Assembly - Includes Packing, Nut & Retainer	1
	870-53	Nut, Throttle Stop	1
	819-102	Screw, Throttle Stop Clamp	1
	142-33	*Gasket Kit, Carburetor	1
	142K387	Repair Kit, Carburetor (Replaces #142K371)	1

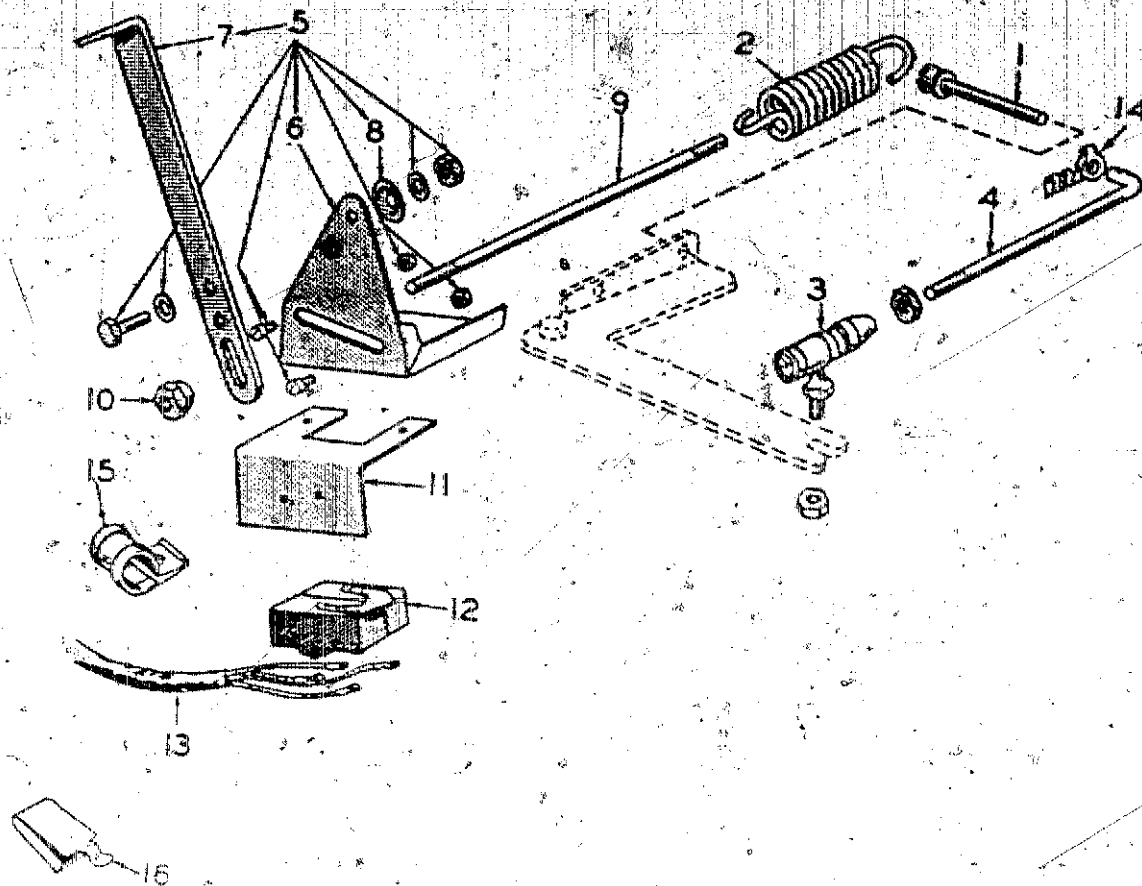
* Contained in Repair Kit #142K387.

FIG. H - FUEL PUMP PARTS GROUP



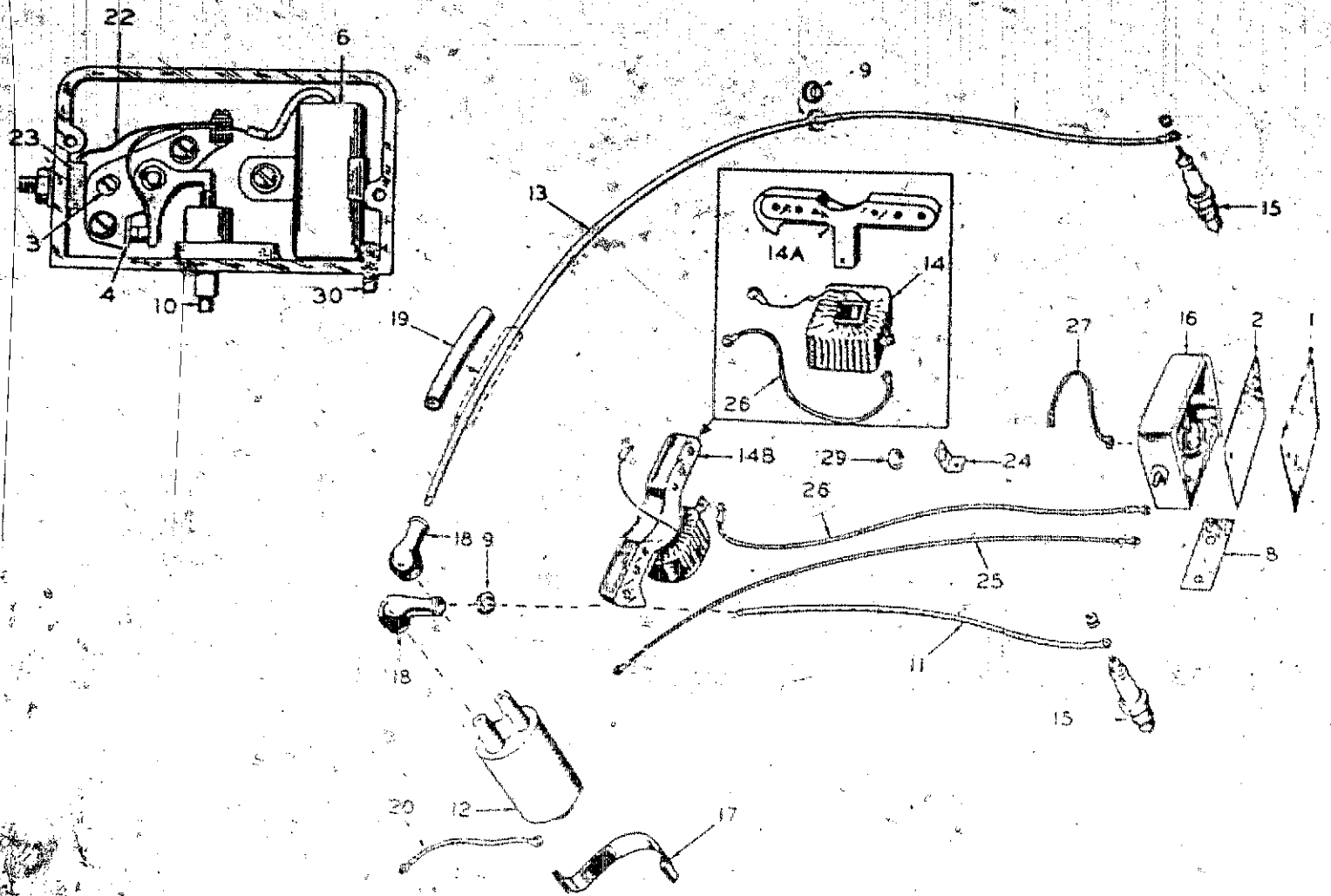
REF. NO.	PART NO.	DESCRIPTION	QUANT. USED
	149D593	Pump, Fuel - ONAN with primer lever (Replaces either #149C602 or #149D690).	1
	149K526	Kit, Fuel Pump Repair - Includes Parts marked (***)	1
1		Body, Upper - Not Sold Separately	1
2	815-148	Screw, Hex Head Self Tapping - #8-32 x 7/8" - Pump Assembly	4
3	815-147	Screw, Phillips Flat Head Self Tapping - #6-32 x 5/8" Valve Retainer	2
4	149-96	***Valve and Cage	2
5	149A95	***Gasket, Valve	2
6	149A562	***Diaphragm Assembly	1
7	149A672	***Spring, Diaphragm (Replaces #149A93)	1
8	149A539	Retainer, Valve Cage	1
9	149A675	***Spring, Rocker Arm (Replaces #149A94)	1
10	518A113	Pin, Rocker Arm	1
11		Body, Lower - Not Sold Separately	1
12	149-710	Arm and Link Set - Sold only as a set (Replaces previously used Arm and Link)	1
14	149A551	Lever, Hand Primer	1
15	509-65	Seal, "O" Ring	2
16	149A404	Spring, Fuel Pump Priming Lever	1
17	149A3	***Gasket, Fuel Pump Mounting	1
18	518-129	Ring, "E" Retainer - Priming Lever	1
19	149A858	Gasket, Diaphragm	1

FIG. J - GOVERNOR & THROTTLE GROUP



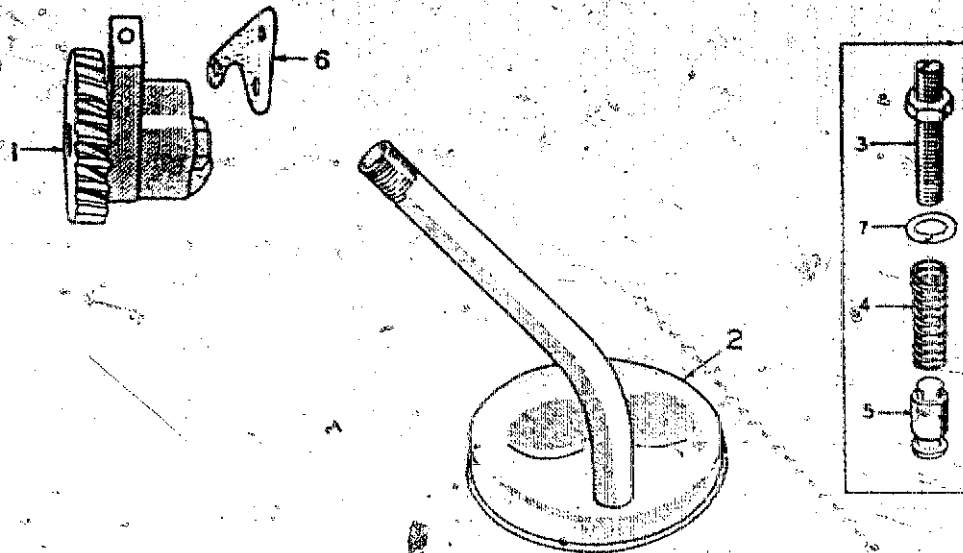
REF. NO.	PART NO.	DESCRIPTION	QUANT. USED
1	150A136	Screw, Governor Sensitivity Adjusting	1
2	150A98	Spring, Governor	1
3	150A639	Joint, Governor Link Ball (Replaces #150A300)	1
4	150A629	Link, Governor Arm to Carburetor	1
5	152B85	Control Assembly, Variable Speed Governor - Includes parts marked (†) plus hardware.	1
6	152B86	Bracket, Variable Speed Lever	1
7	152A83	†Lever, Speed Control	1
8	152A41	†Washer, Tension - Speed Lever	1
9	152A90	Stud, Speed Adjusting	1
10	150A621	Spacer, Spherical Faced - Speed Adjusting Stud	1
11	309B78	Bracket, Micro Switch Mounting	1
12	309P76	Switch, Micro	1
13	338B152	Harness, Wiring - Micro Switch	1
14	518-6	Clip, Link to Carburetor	1
15	332-50	Clip, Tinnerman #3044-3 - Harness to Bracket - Prior to Serial #576156	1
16	332-591	Clip, Wire - Harness to Bracket - Begin Serial #576156	1

FIG. K - IGNITION GROUP



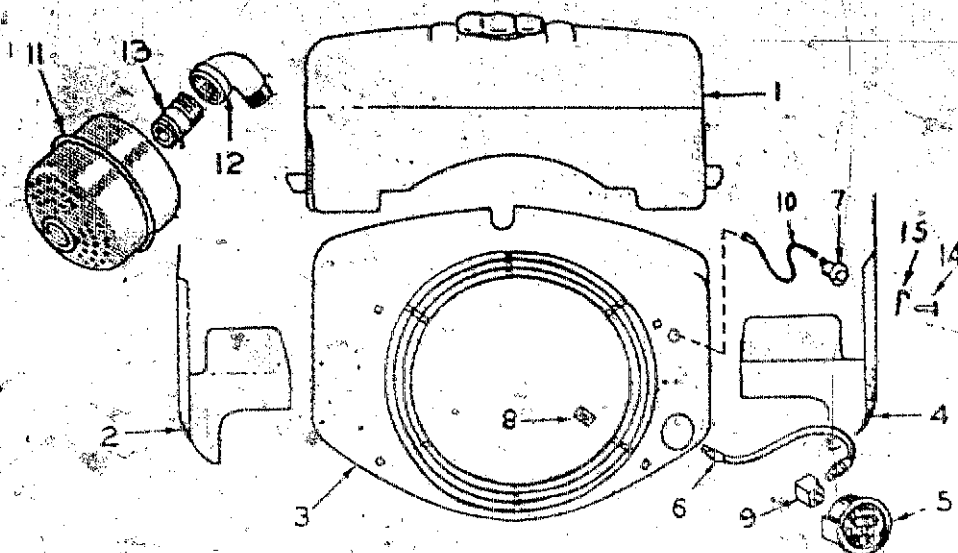
REF. NO.	PART NO.	DESCRIPTION	QUANT USED
1	160A152	Cover, Breaker Box	1
2	160A159	Gasket, Breaker Box Cover	1
3	160A75	Pivot, Breaker Arm	1
4	160A2	Point Set, Ignition Breaker	1
6	312A59	Condenser, Breaker Box - 0.3 Mfd.	1
8	160A43	Gasket, Breaker Box Mounting	1
9	508-5	Grommet, Spark Plug Cable - In Blower Housing	2
10	160A262	Plunger, Breaker - Includes Plunger, Diaphragm & Guide	1
11	160A1508	Cable, Spark Plug - Unshielded - Right Hand - 9" (#2 Cylinder)	1
12	160C782	Coil, Ignition (Replaces 160C483)	1
13	167A1288	Cable, Spark Plug - Unshielded - Left Hand - 23" (#1 Cylinder)	1
14	160A282	Coil, Magneto Stator	1
14A	160A281	Pole Shoe, Magneto Stator	1
14B		Stator Assembly, Magneto - Complete, ORDER COMPONENT PARTS	1
15	167-28	Plug, Spark	2
16	160A257	Box Assembly, Ignition Breaker - Complete	1
17	160A489	Clamp, Ignition Coil	1
18	160A556	Nipple, Ignition Coil Rubber	2
19	503-92	Sleeve, Rubber - Spark Plug Lead to Housing - Prior to Spec "D"	1
20	336A461	Lead, 7" - Coil to Ground	1
22	160A428	Strap, Point Set to Breaker Box Terminal Block	1
23	332A319	Block, Breaker Box Terminal	1
24	332A273	Clip, Magneto Lead	1
25	336A515	Lead, 14" - Coil to Breaker Box	1
26	336A531	Lead, 18" - Stator to Breaker Box	1
27	336A439	Lead, Ground - Breaker Box to Manifold Ground	1
29	508-2	Grommet, Magneto Lead Rubber	1
30	160A261	Wick, Breaker Box Oil Drain	1
	815-411	Screw, Fillister Head - 1/4-20 x 5/8" - Breaker Box	1
	815-112	Screw, Fillister Head - 1/4-20 x 3/4" - Breaker Box	1

FIG. 1 - OIL PUMP GROUP



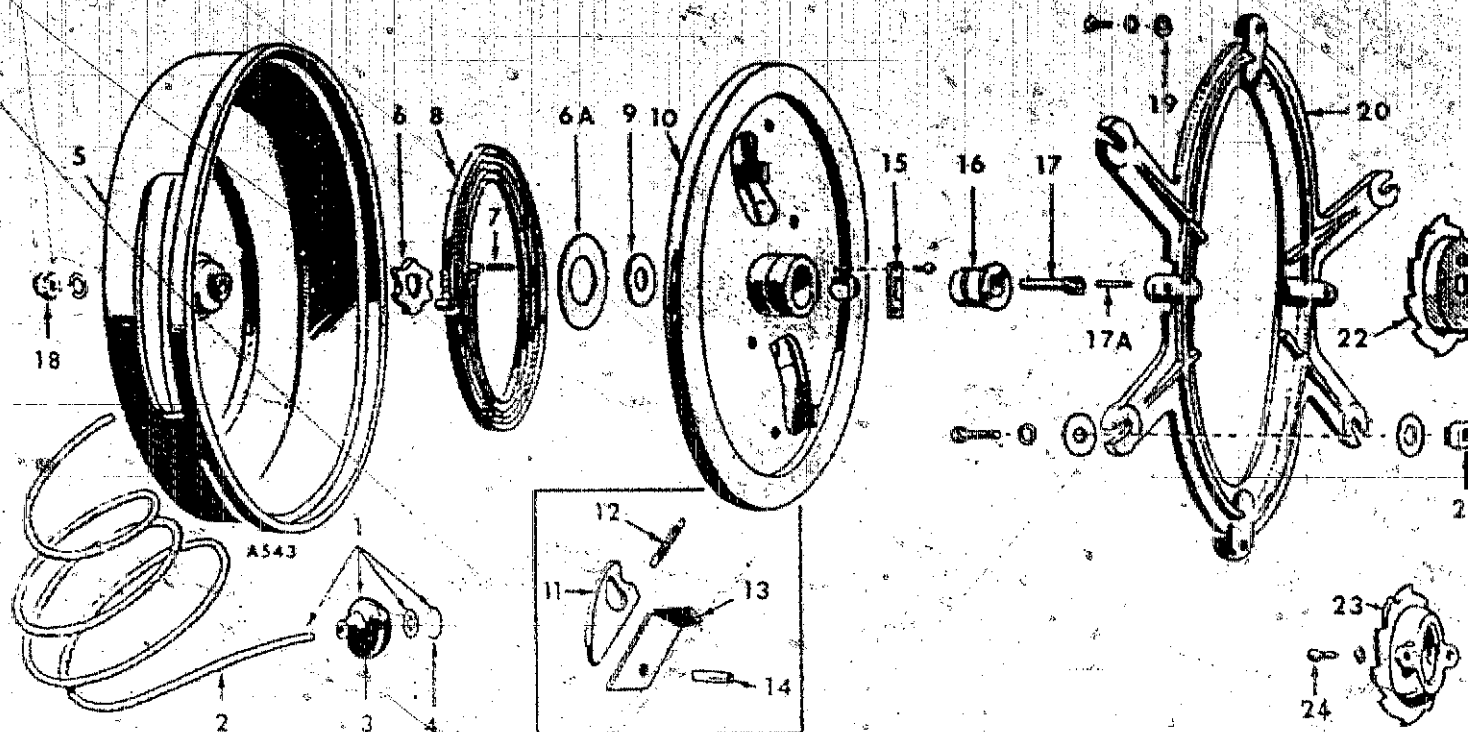
REF. NO.	PART NO.	DESCRIPTION	QUANT USED
1	120A491	Pump, Oil - Complete Pump - Internal parts not sold separately (Replaces #120A394).	1
2	120B400	Cup, Oil Pump Intake - Includes Pipe, Cup & Screen (Replaces #120B409).	1
3	120A187	Stud Assembly, By-Pass Adjusting - Includes Stud & Nut	1
4	120A140	Spring, By-Pass Valve	1
5	120A398	Valve, By-Pass	1
6	120K161	Gasket Kit, Oil Pump - Includes mounting and body gaskets	1
7	526-66	Washer, Copper - Oil Pressure Relief Valve Adjusting Screw	1

FIG. M - HOUSING, STOP BUTTON, MUFFLER & GAUGE GROUP



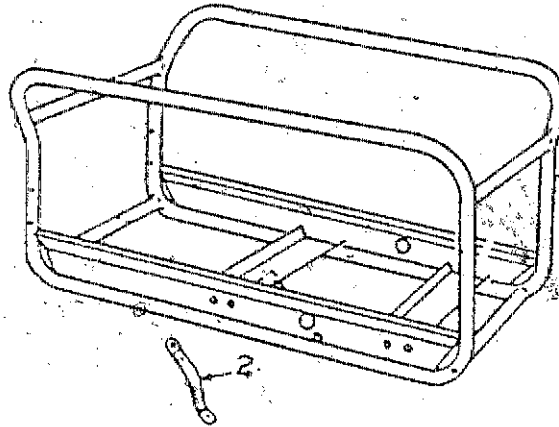
REF. NO.	PART NO.	DESCRIPTION	QUANT USED
1	405C998	Hood, Engine - Replaces 405C983.....	1
2	134D569	Housing, Cylinder Air - Left Hand (#1 Cylinder).....	1
3	134D569	Housing, Blower.....	1
4	134D631	Housing, Cylinder Air - Right Hand (#2 Cylinder).....	1
5	193-5	Gauge, Oil Pressure.....	1
6	501A4	Line, Flexible Oil.....	1
7	313A18	Button, Stop.....	1
8	870-110	Nut, Speedgrip - Read-i-Pull Starter Mounting.....	4
9	502-5	Elbow, Inverted Female - On Oil Gauge.....	1
10	236A491	Lead, Stop Button.....	1
11	155B484	Muffler, Exhaust.....	1
12	505-333	Elbow, Pipe Street - 1" - Exhaust.....	1
13	505-4	Nipple, Pipe Close - 1" - Exhaust.....	1
14	815-96	Screw, Hex Head Self-Tapping - 1/4-20 x 1/2" - Mounting Air Housing.....	4
15	406A213	Catch, Engine Hood.....	2

FIG. N - READI-PULL STARTER GROUP



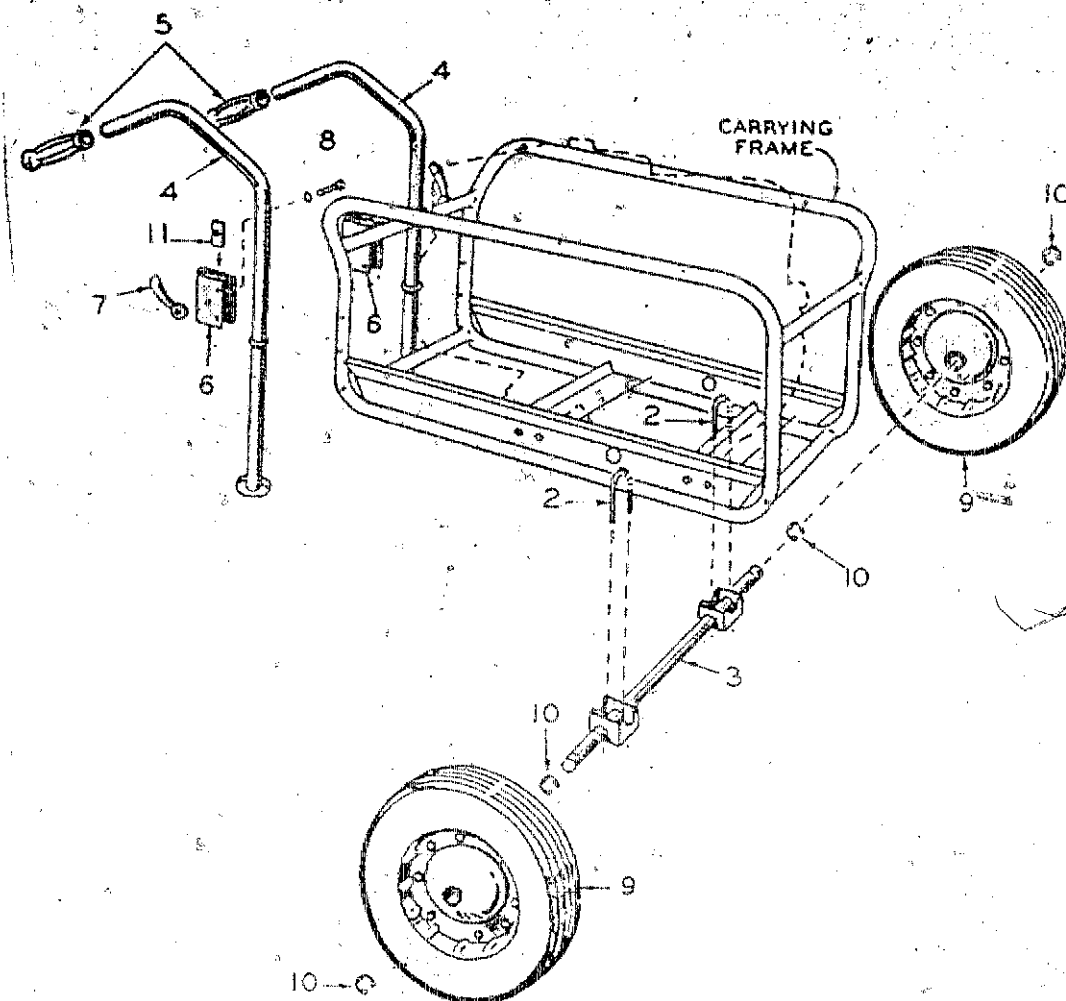
REF. NO.	PART NO.	DESCRIPTION	QUANT USED
	192K215	Starter Kit - Complete - Includes Mounting Ring and Ratchet Wheel (Prior to Spec "D")..	1
	192K325	Starter Kit - Complete - Includes Mounting Ring and Ratchet Wheel (Begin with Spec "D")	1
1	192A45	Rope & Grip Assembly	1
2	192-43	Rope, Starter - Less Grip - 83" Long	1
3	192A44	Grip, Starter Rope - Rubber	1
4	517A25	Plug, Starter Rope Grip	1
5	192C152	Cover, Starter	1
6	192A153	Wheel, Cog - Anti-Backlash	1
6A	526A168	Washer, Spring Retaining	1
7	516-83	Pin, Roll - 3/16 x 5/8 - Recoil Spring	1
8	192A39	Spring, Recoil	1
9	526A123	Washer, Thrust - Sheave Bushing to Cover	1
10	192B180	Sheave, Rope	1
11	192A172	Pawl	2
12	192A165	Spring, Pawl	2
13	192A166	Arm, Ratchet	2
14	516-110	Pin, Roll - 5/16 x 1/2" - (2) Ratchet Arm, (2) Pawl	4
15	192A167	Clamp, Rope	1
16	192A163	Bearing, Sheave Hub - Bronze	1
17	192A323	Capscrew, Socket Head - 3/8-16 x 1-1/2" - Sheave Bushing to Cover (Replaces #802-74)	1
17A	516-132	Pin, Spirol - Brass - 1/8" x 5/8" - Starter Locating - Begin with Spec "D"	1
18	870-138	Nut, Flexlock - Bushing to Cover Screw	1
19	526A21	Washer, Flat - Starter to Mounting Ring	4
20	192C186	Ring, Mounting - Starter to Blower Housing	1
21	870-110	Nut, Speed Grip - Starter Ring to Blower Housing	4
22	192B309	Wheel, Ratchet - Begin with Spec "D"	1
23	192A170	Wheel, Ratchet - Prior to Spec "D"	1
24	192A218	Capscrew, Socket Head - Ratchet Wheel to Flywheel - Prior to Spec "D"	2

FIG. O - CARRYING FRAME GROUP



REF. NO.	PART NO.	DESCRIPTION	QUANT USED
1	403C426	Frame, Carrying (Replaces #403C370).....	1
2	337A50	Strap, Ground - Engine to Carrying Frame.....	1

FIG. P - DOLLY GROUP - PORTABLE PLANTS



REF. NO.	PART NO.	DESCRIPTION	QUANT USED
	410C235	Dolly Assembly - Complete	1
2	410C148	"U" Bolt	2
3	410B232	Axle, Dolly	1
4	410B147	Handle, Dolly	2
5	403-205	Grip, Handle	2
6	410B179	"E" Channels	2
7	406-62	Nut, Handle	2
8	800-52	Bolt, Wedge (Replaces #410A158)	2
9	410P236	Wheel & Tire Assembly - 16 x 4.00	2
10	518-130	Ring, "E" Retaining - Dolly Wheel to Axle	4
11	410A238	Lock, Handle - On wedge bolt under "U" clamp	2
12	410-0122	Tire	1
13	410-0126	Tube	1

FIG. Q - GENERATOR GROUP

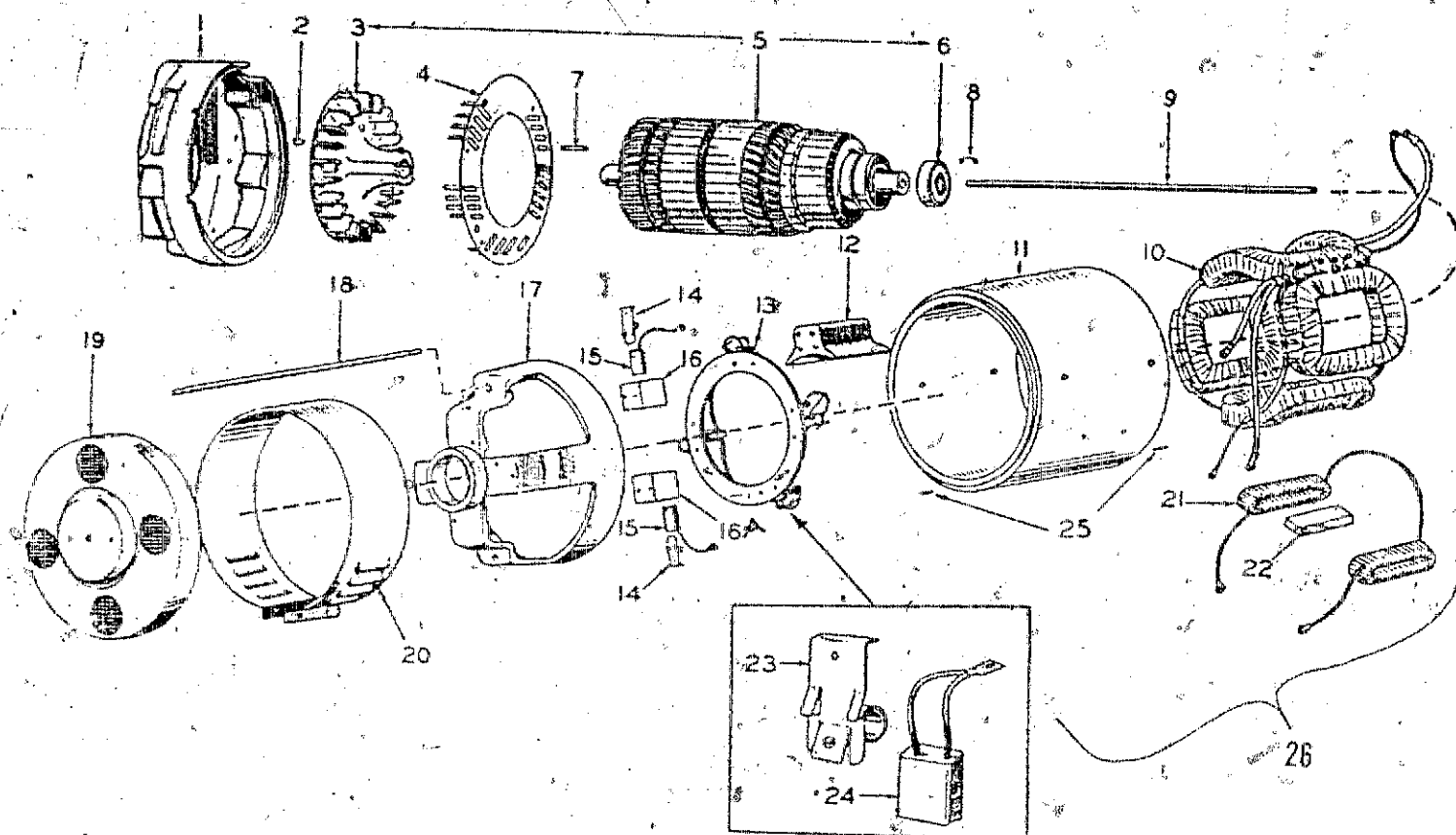


FIG. Q - GENERATOR GROUP

REF. NO.	PART NO.	DESCRIPTION	QUANT USED
1	231B1005	Adapter, Generator to Engine (Replaces #231E69)	1
2	515-6	Key, Blower to Crankshaft	1
3	205C53	Blower, Generator	1
4	232B1256	Plate, Baffle	1
5	201A807	Armature Assembly - Includes Blower & Bearing - 115 Volt AC	1
5	201A844	Armature Assembly - Includes Blower & Bearing - 230 Volt AC	1
6	510A47	Bearing, Ball-Double Sealed, Pae-Lubricated	1
7	515A122	Key, Drive - Blower Wheel to Armature	1
8	232A596	Clip, Bearing Stop	1
9	520A534	Stud, Armature - Thru	1
10	222A1457	Coil Assembly, Field - Set of 4	1
11	210C260	Frame, Generator - Machined - Less Coils & Poleshoes	1
12	221B118	Shoe, Pole	4
13	212C229	Rig Assembly, Brush	1
14	212A1123	Spring, AC Brush	2
15	214A50	Brush, AC (Replaces #214A32)	2
16	212A1161	Holder, AC Brush (Upper)	1
16A	212A1160	Holder, AC Brush (Lower)	1
17	211D111	Bell, End	1
18	320A161	Stud, Generator Thru	2
19	211C114	Cover, End Bell (Replaces #211C99)	1
20	234C2	Band, End Bell	1
21	222A1456	Coil Set, Interpole	1
22	221A116	Interpole	2
23	212A1106	Spring, DC	4
24	214A87	Brush, DC (Replaces 214A80)	4
25	516-103	Pin, Roll - Generator Frame	2
26	210-1531	Frame Assembly (Includes items 10,11,12,21,22)	1

FIG. R - CONTROL GROUP

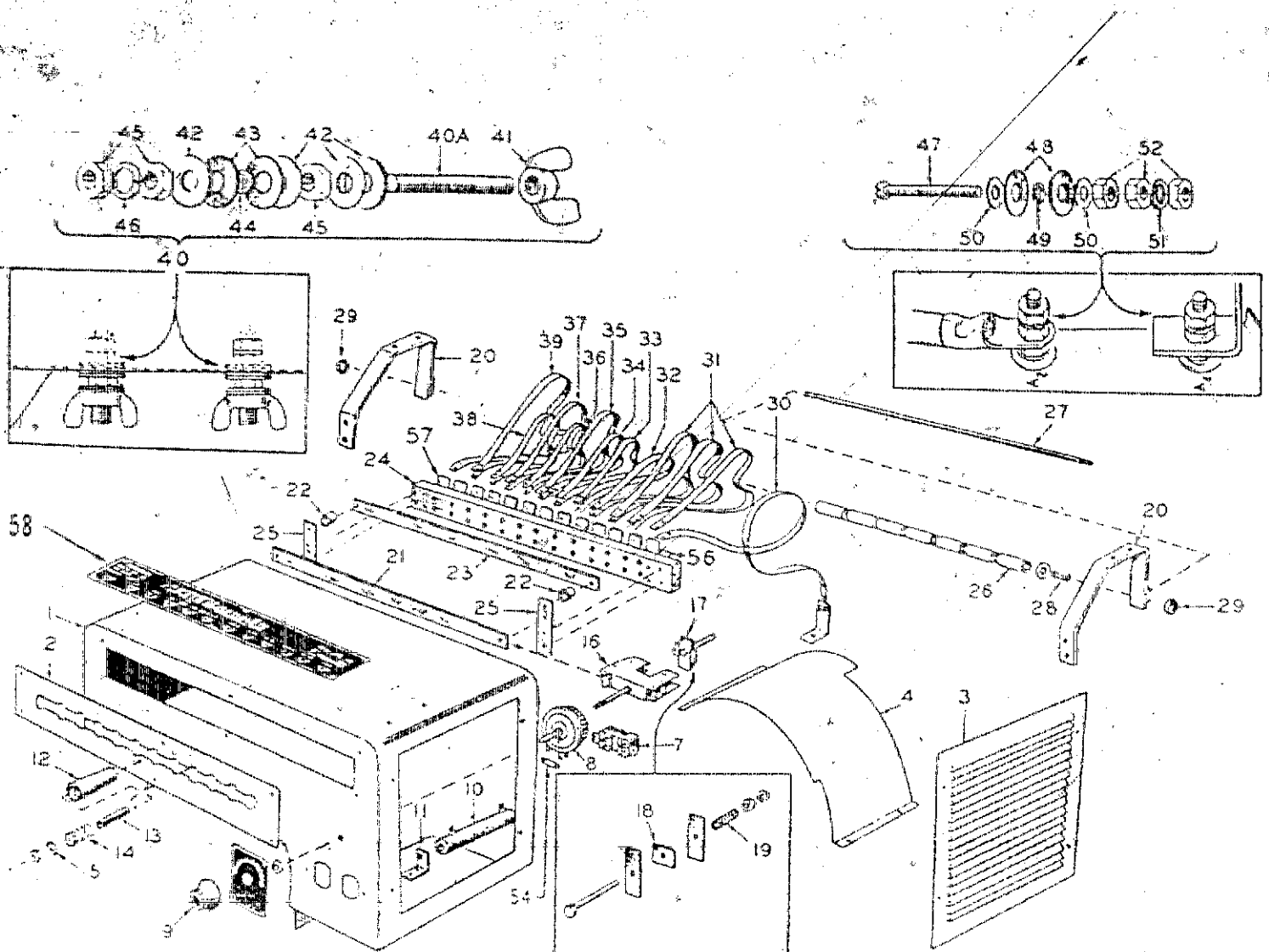


FIG. R - CONTROL GROUP

REF. NO.	PART NO.	DESCRIPTION	QUA USI
1	301D1307	Box, Control	1
2	301B1342	Plate, Control Box Switch	1
3	301B1340	Plate, Control Box Vent	1
4	301C1339	Plate, Control Box Reflector	1
7	323P184	Receptacle, Duplex ... 115 volt AC output	1
	323P213	Receptacle, Duplex ... 230 volt AC output	1
8	303-1	Rheostat (Replaces #303-25)	1
9	304-61	Knob, Rheostat	1
10	304A188	Resistor, 5.0 Ohm, 75 Watt - Replaces #304A376 4.5 Ohm, 75 Watt	1
11	304A117	Bracket, Resistor Mounting	1
	304D359	Resistor & Switch Assembly - Includes Switch on Slide Bar & Ribbons	1
12	308A112	Handle, Switch	1
13	308A125	Insulator, Handle	1
14	149A93	Spring	1
15	508-76	Washer, Insulating (Replaces #508-19)	1
16	308B110	Roller, Carriage Assembly	1
17	308A143	Contact Assembly, Sliding (Contact Blades not sold separately)	1
18	308A116	Blade, Spacer	1
19	308A106	Spring, Contact Assembly	1
20	308B121	Bracket, Mounting	2
21	308A117	Bar, Slider	1
22	308A113	Spacer, Common Bar	2
23	308A118	Bar, Common	1
24	308B126	Bar Assembly, Contact Terminal (Includes 1 Terminal Board, 12 Contact Bars, 12 Terminal Bars)	1
25	308A120	Support, Upright	2
26	304A379	Tube, Insulators	7
27	304A356	Rod, Insulator	1
28	304A380	Spring, Insulator	1
29	304-382	Nut, Push	2
30	304A383	Element, Resistor - Includes Bracket	1
31	304A353	Element, Resistor	3
32	304A346	Element, Resistor	1
33	304A349	Element, Resistor	1
34	304A348	Element, Resistor	1
35	304A352	Element, Resistor	1
36	304A347	Element, Resistor	1
37	304A351	Element, Resistor	1
38	304A350	Element, Resistor	1
39	304A354	Element, Resistor	1
	335A1095	Wire #2 - 21" Long - Output Terminal to Generator Terminal	1
	335A1094	Wire #2 - 6-3/4" Long - Tap Switch to Output Terminal	1
	335A1093	Wire, Aircraft #16 - 13" Long - Rheostat to Resistor	1
	335A1092	Wire, Aircraft #16 - 10" Long - Rheostat to Generator A2 Terminal	1
40	332A615	Stud Package, Terminal - Includes parts 40A thru 46	2
40A	332-3	Stud, 3/8-16 x 2" - Positive and Negative Terminals	2
41	865-9	Nut, Wing - 3/8-16	2
42	526-59	Washer, Brass	8
43	508-20	Washer, Insulator Fiber	2
44	508-67	Washer, Internal Insulator	2
45	671-27	Nut, Brass - 3/8-16	8
46	650-50	Washer, Lock	2
47	812-155	Screw, Round Head - 1/4-20 x 1-1/4" - A1 and A2 Terminals	2
48	508-18	Washer, Insulator Fiber	2
49	508-6	Washer, Internal Insulator	2
50	526-52	Washer, Brass	2
51	650-40	Washer, Lock	2
52	671-16	Nut, 1/4-20	8
54	332A197	Strap, Jumper - Rheostat	1
56	308A119	Strap, Resistor Connection	1
57	308A114	Contact, Stationary	1
58	99-0167	Label	1

SERVICE KITS

REF. NO.	PART NO.	DESCRIPTION	QUANT USED
142-33		Kit, Carburetor Gasket	1
142K387		Kit, Carburetor Repair Parts	1
149K526		Kit, Fuel Pump Repair Parts	1
168K67		Kit, Plant Gasket	1
412C28		Cover, Canvas	1