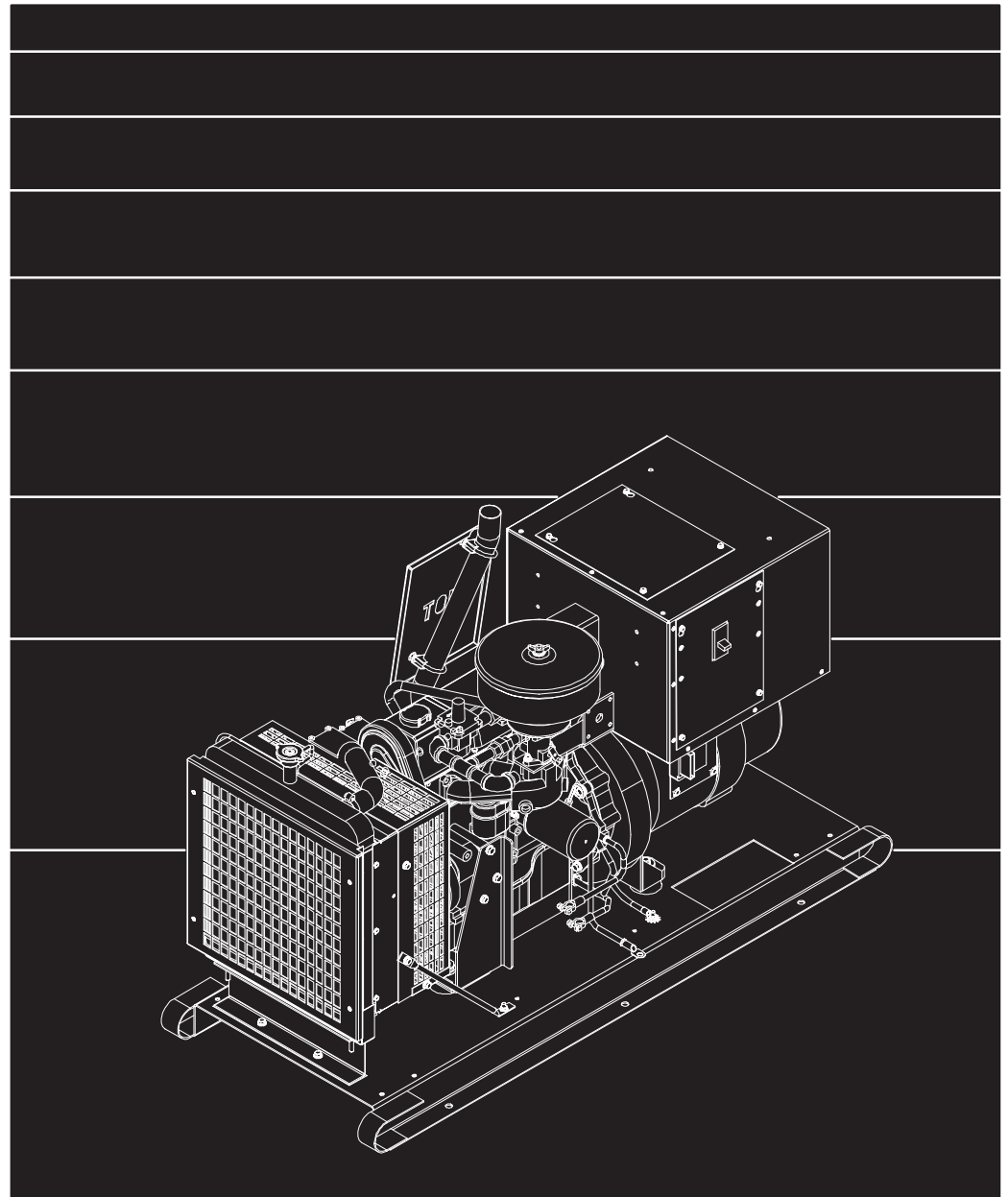




Parts Catalog

GGDB

Generator Set



Printed in U.S.A.

928-0233C (Spec A-C) 4-99
Replaces 928-0233B (Spec A, B) 10-98

MODEL IDENTIFICATION

To avoid errors or delay in filling your parts order, always give the MODEL, SPEC NO. and SERIAL NO. from the Onan nameplate.

For handy reference, insert your nameplate information in the spaces below.

MODEL AND SPEC NO.

SERIAL NO.

DIGITAL CONTROL SOFTWARE VERSION
AND DATE (IF APPLICABLE)

SAFETY PRECAUTIONS

The following symbols are used in Onan manuals to alert users to the potentially dangerous conditions relating to maintenance of equipment and replacement of parts. Please read and observe.



This symbol warns of immediate hazards which will result in severe personal injury or death.



This symbol refers to a hazard or unsafe practice which can result in severe personal injury or death.



This symbol refers to a hazard or unsafe practice which can result in severe personal injury or product or property damage.

PRODUCT SAFETY PRECAUTIONS



Service and repair of Onan equipment must be performed by trained, experienced personnel only. Improper service or repair may result in property damage, severe personal injury or death. Do not use this catalog as a guide to servicing your equipment. Read and follow the IMPORTANT SAFETY INSTRUCTIONS in the Service Manual appropriate for the equipment you are working on.



Contact with USED ENGINE OILS has been identified by a United States federal agency and some USA state agencies as causing CANCER or REPRODUCTIVE TOXICITY. When checking or changing engine oils take all necessary precautions not to ingest, breathe the fumes or contact the used oil.



Contact with ASBESTOS has been identified by a United States federal agency and some USA state agencies as causing CANCER or REPRODUCTIVE TOXICITY. When handling engine gaskets take all necessary precautions not to ingest, breathe or contact the dust from the gaskets! Use adequate ventilation and wear protective gloves, masks and clothing!



Contact with BENZINE and LEAD, found in gasoline, fuel additives and solvents has been identified by a United States federal agency and some USA state agencies as causing CANCER or REPRODUCTIVE TOXICITY. When checking, draining or adding gasoline and fuel additives or using solvents take all necessary precautions not to ingest, breathe the fumes or contact the liquids. Use adequate ventilation and wear protective gloves, masks and protective clothing!

Introduction

This parts catalog applies to the standard generator model GGDB as listed in the Generator Set Data Table. Parts are arranged in groups of related items and each illustrated part is identified by a reference number corresponding with the same reference number in the parts list. Parts illustrations are typical. Throughout this catalog left and right sides are determined by facing the engine end (front) of the set.

Engine parts that have been modified or added by Onan are identified in this catalog. All other engine replacement parts must be ordered from the engine manufacturer by referring to the engine manufacturer's nameplate and supplying all available information. Contact your nearest engine parts distributor for assistance in ordering replacement parts.

Replacement Engine

Onan Generator Model	Ford Engine Model
GGDB	LRG425I-6005-A

Replacement engines cannot be ordered from Onan. Order from your nearest Ford Distributor.

Generator Set Data Table

Model/ Specification	Electrical Data					Battery Voltage
	Watts	Volts	Hertz	Wire	Phase	
16.0GGDB*	16,000	#	50	4,6,12	1 or 3	12 VDC
20.0GGDB*	20,000	#	60	4,6,12	1 or 3	12 VDC

* The specification number denotes customer requested options or deviations from the Standard model. The specification letter advances with major manufacturing changes.

Broad Range Reconnectible.

Index

- Adapter, Duct, **25**
- Adapter, Generator, **7**
- Ammeter, AC – Sets With Detector Control, **41**
- Armature, Starter, **33**

- Baffle, Air – Generator, **37**
- Battery, Hold Down – Skid, **32**
- Bearing, Starter (Commutator End), **33**
- Bearing, Starter (Pinion End), **33**
- Bell, End – Generator, **37**
- Block, Terminal – Control Box – Sets With Detector Control, **41**
- Block, Terminal – Control Box – Sets With Sentinel Control, **39**
- Block, Terminal – Control Harness – Sets With Sentinel Control, **39**
- Block, Terminal – Control Housing – Sets With Detector Control, **34**
- Block, Terminal – Engine to Control Wiring Harness – Sets With Detector Control, **45**
- Board, Connection – Generator, **37**
- Board, Printed Circuit – Engine Monitor – Sets With Detector Control, **41**
- Board, Printed Circuit – Overspeed – Sets With Sentinel Control, **46**
- Board, Printed Circuit – Sensor Board – Sets With Detector Control, **41**
- Board, Printed Circuit – Voltage Regulator, **50**
- Box, Control – Sets With Detector Control, **41**
- Box, Control – Sets With Sentinel Control, **39**
- Brace, Radiator – Spec A, **23**
- Brace, Radiator – Spec B, C, **24**
- Bracket, Air Cleaner – Muffler, **21**
- Bracket, Battery – Guard, **7**
- Bracket, Control Saddle, **34**
- Bracket, Coolant Tank, **27**
- Bracket, Front – Engine Mounting – Skid, **32**
- Bracket, Heater – Coolant Heater, **28**
- Bracket, Mounting – Circuit Breaker – Sets With Detector Control, **51**
- Bracket, Mounting – Circuit Breaker – Sets With Sentinel Control, **39**
- Bracket, Overspeed – Sets With Sentinel Control, **46**
- Bracket, Overspeed Switch – Sets With Detector Control, **47**
- Breaker, Circuit – Control Box – Sets With Sentinel Control, **39**
- Breaker, Circuit – UL Listed – Spec A, **52**
- Breaker, Circuit – UL Listed – Spec B, C, **53**
- Breaker, Circuit – UL Listed, IEC Conformity – Spec A, **52**
- Breaker, Circuit – UL Listed, IEC Conformity – Spec B, C, **53**
- Breaker, Circuit – Voltage Regulator, **50**
- Breather, Air Cleaner – Spec C, **11**

- Cable, Battery, **7**
- Cable, Heater – Control, **48**
- Cap, Radiator – Spec A, **23**
- Cap, Radiator – Spec B, C, **24**
- Cap, Tank – Coolant Tank, **27**

- Cleaner, Air – Spec A, B, **10**
- Cleaner, Air – Spec C, **11**
- Clutch, Starter, **33**
- Cock, Drain – Radiator – Spec A, **23**
- Contact, Auxiliary Switch – Spec A, **52**
- Contact, Auxiliary Switch – Spec B, C, **53**
- Contact, Dry – Spec B, C, **49**
- Control, Detector, **41**
- Control, Sentinel, **39**
- Cord, Heater – Generator Heater, **35**
- Cover, Air Cleaner – Spec C, **11**
- Cover, Circuit Breaker – Sets With Detector Control, **51**
- Cover, Circuit Breaker – Sets With Sentinel Control, **39**
- Cover, Control Box – Sets With Sentinel Control, **39**
- Cover, Control Housing – Sets With Detector Control, **34**
- Cover, End Bell, **35**
- Cushion, Mounting – Skid, **32**
- Cushion, Vibration Isolation – Skid, **32**

- Disk, Rotor Drive – Generator, **37**
- Door, Control – Sets With Detector Control, **41**
- Drain, Radiator, **26**

- Element, Air Cleaner – Spec A, B, **10**
- External Engine Parts, **7**

- Fan, Engine – Spec A, **23**
- Fan, Engine – Spec B, C, **24**
- Fan, Generator, **37**
- Filter, Air – Spec C, **11**
- Frame, Starter (Commutator End), **33**
- Fuel System, Natural Gas, **12**
- Fuel System, Natural Gas – With Low Fuel Pressure Warning Switch – Spec B, C, **13**
- Fuel System, Natural Gas/Propane Liquid With Automatic Changeover, **18**
- Fuel System, Natural Gas/Propane Vapor, **17**
- Fuel System, Propane Liquid, **16**
- Fuel System, Propane Vapor, **14**
- Fuel System, Propane Vapor – With Low Fuel Pressure Warning Switch – Spec B, C, **15**
- Fuse – Control Box – Sets With Detector Control, **41**
- Fuse – Control Box – Sets With Sentinel Control, **39**

- Gasket, Air Cleaner – Spec C, **11**
- Gauge, Oil Pressure – Sets With Detector Control – Control Mounted, **41**
- Gauge, Oil Pressure – Sets With Sentinel Control – Engine Mounted, **8**
- Gauge, Water Temperature – Sets With Detector Control – Control Mounted, **41**
- Gauge, Water Temperature – Sets With Sentinel Control – Engine Mounted, **8**
- Generator (Assembly), **37**
- Governor, **20**
- Grille, Air Outlet – Engine, **7**
- Guard, Alternator Belt – Radiator – Spec A, **23**
- Guard, Alternator Belt – Radiator – Spec B, C, **24**

Index

- Guard, Alternator Belt – Remote Radiator, **22**
Guard, Belt – Remote Radiator, **22**
Guard, Fan – Radiator – Spec A, **23**
Guard, Fan – Radiator – Spec B, C, **24**
Guard, Radiator – Spec A, **23**
Guard, Radiator – Spec B, C, **24**
- Hanger, Tank – Coolant Tank, **27**
Harness, Wiring – AC Auxiliary – Sets With Detector Control, **45**
Harness, Wiring – AC Control Door – Sets With Detector Control, **41**
Harness, Wiring – Control Box – Sets With Sentinel Control, **39**
Harness, Wiring – DC Control Door – Sets With Detector Control, **41**
Harness, Wiring – Dry Contact – Spec B, C, **49**
Harness, Wiring – Dual Fuel – Natural Gas/Propane Vapor, **17**
Harness, Wiring – Dual Fuel Natural Gas/Propane Liquid With Automatic Changeover, **18**
Harness, Wiring – Engine to Control – Sets With Detector Control, **45**
Harness, Wiring – Engine to Control – Sets With Sentinel Control, **43**
Harness, Wiring – Ignition, **7**
Harness, Wiring – Terminal Block – Sets With Detector Control, **41**
Harness, Wiring – Vacuum Switch, **19**
Heater, Control, **48**
Heater, Engine Coolant, **28**
Heater, Generator, **35**
Hose, Air Cleaner – Spec A, B, **10**
Hose, Breather – Air Cleaner – Spec C, **11**
Hose, Engine Coolant – Radiator – Spec A, **23**
Hose, Engine Coolant – Radiator – Spec B, C, **24**
Hose, Engine Coolant Heater, **28**
Hose, Radiator – Remote Radiator, **22**
Hose, Radiator – Spec A, **23**
Hose, Radiator – Spec B, C, **24**
Hose, Radiator Drain, **26**
Housing, Air Cleaner – Spec C, **11**
Housing, Control – Detector Control, **34**
Housing, Generator Set – Quiet Site Second Stage – Spec B, C, **31**
Housing, Generator Set – Standard Weather Protective, **29**
Housing, Starter, **33**
- Isolator, Vibration – Control Box – Sets With Detector Control, **41**
Isolator, Vibration – Control Box – Sets With Sentinel Control, **39**
- Joint, Ball – Governor, **20**
- Kit, Starter Brush, **33**
- Lever, Governor, **20**
Light, Indicator – Sets With Detector Control, **41**
- Meter, Frequency – Sets With Detector Control, **41**
Meter, Hour – Sets With Detector Control, **41**
Meter, Hour – Sets With Sentinel Control, **39**
Module, Ignition – Spec A, B, **7**
Module, Ignition – Spec C, **9**
Mount, Radiator – Spec A, **23**
Mount, Radiator – Spec B, C, **24**
Muffler, Critical, **21**
- Overspeed, Electronic – Sets With Sentinel Control, **46**
- Paint, **5**
Panel, Control Box – Sets With Sentinel Control, **39**
Panel, Control Housing – Sets With Detector Control, **34**
Pickup, Magnetic – Governor, **20**
Point, Overspeed – Sets With Detector Control, **47**
Potentiometer – Voltage Regulator, **50**
- Radiator – Spec A, **23**
Radiator – Spec B, C, **24**
Radiator, Remote, **22**
Rectifier – Control Harness – Sets With Sentinel Control, **39**
Rectifier – Generator, **37**
Rectifier, Power – Control Heater, **48**
Regulator, Voltage – Sets With Detector Control, **50**
Regulator, Voltage – Sets With Sentinel Control, **39**
Relay – Control Box – Sets With Sentinel Control, **39**
Relay – Control Harness – Sets With Sentinel Control, **39**
Relay – Dry Contact – Spec B, C, **49**
Relay – Engine to Control Wiring Harness – Sets With Detector Control, **45**
Relay, Timer – Sets With Sentinel Control, **39**
Rotor, Exciter, **37**
Rotor, Generator, **37**
Rotor, Ignition – Overspeed – Sets With Sentinel Control, **46**
- Sealant, Thread, **5**
Sender, Oil Pressure – Sets With Detector Control, **7**
Sender, Water Temperature – Sets With Detector Control, **7**
Shield, Exhaust – Engine, **7**
Shield, Heat – Muffler, **21**
Shroud, Fan – Radiator – Spec A, **23**
Shroud, Fan – Radiator – Spec B, C, **24**
Skid, **32**
Starter, **33**
Stator, Exciter, **37**
Stator, Generator, **37**
Strap, Electrical – Engine, **7**
Strap, Ground – Control Box – Sets With Detector Control, **41**
Switch, Low Coolant Level, **27**
Switch, Oil Pressure – Sets With Sentinel Control, **7**
Switch, Overspeed – Sets With Detector Control, **47**
Switch, Rocker – Control Box – Sets With Detector Control, **41**
Switch, Rocker – Control Box – Sets With Sentinel Control, **39**
Switch, Starter, **33**

Index

Switch, Vacuum, **19**

Tank, Coolant, **27**

Thermostat – Sets With Sentinel Control, **7**

Trip, Shunt – Spec A, **52**

Trip, Shunt – Spec B, C, **53**

Tube, Exhaust – Muffler, **21**

Voltmeter, AC – Sets With Detector Control, **41**

Voltmeter, DC – Sets With Detector Control, **41**

Abbreviations

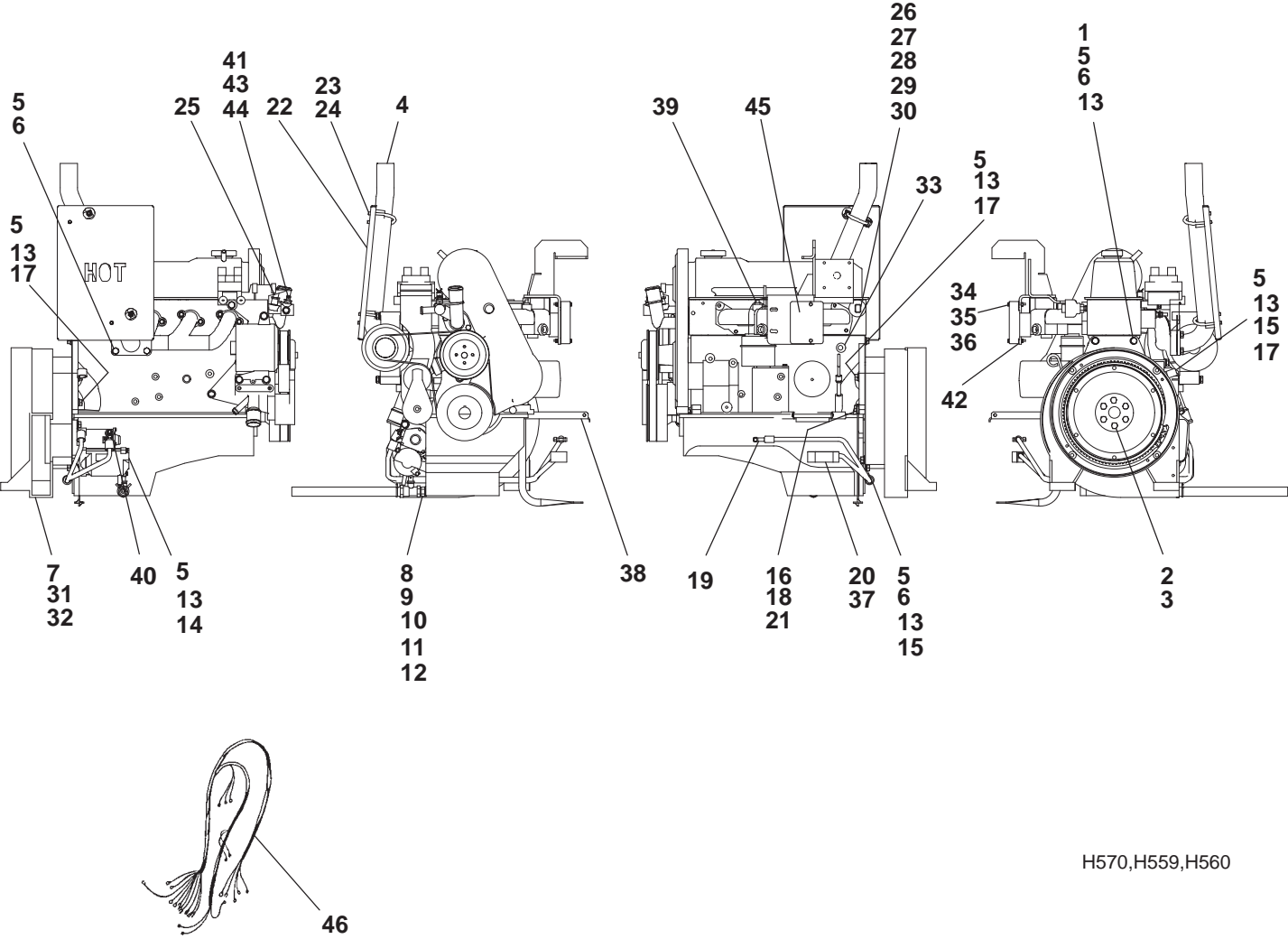
Some of the following abbreviations may be used throughout this Parts Catalog:

AC	Alternating Current	mm	Millimeter
Amp	Ampere	MOH	Mobile Off Highway
A/R	As Required	NFS	Not For Sale
AVR	Automatic Voltage Regulator	NPT	National Pipe Thread
AWG	American Wire Gauge	OD	Outside Diameter
Deg	Degree	oz.	Ounce
DC	Direct Current	PMG	Permanent Magnet Generator
EFC	Electronic Fuel Control	Ph	Phase
ET	External Tooth	PC	Printed Circuit
EIT	External/Internal Tooth	RFI	Radio Frequency Interference
GFI	Ground Fault Interrupter	RT	Right
ID	Inside Diameter	Spec	Specification
IT	Internal Tooth	Thk	Thick
IEC	International Electrotechnical Commission	UL	Underwriters Laboratories Inc.
kW	Kilowatt	UNC	Union National Coarse
LPG	Liquid Petroleum Gas	UNF	Union National Fine
LT	Left	VAC	Volts Alternating Current
M(meter Number)	Meter	VDC	Volts Direct Current
		W/(ET, IT, EIT)	With

Paint and Thread Sealant

REF NO.	PART NO.	QTY USED	PART DESCRIPTION	REF NO.	PART NO.	QTY USED	PART DESCRIPTION
			Onan Green Enamel (Non-Metallic)	518-0601	—		Sealant, Thread (6 ml. Tube)
	525-0305	—	12 oz. Pressurized Spray Can				
	525-0306	—	Quart Can				
	525-0304	—	Gallon Can				

External Engine Parts

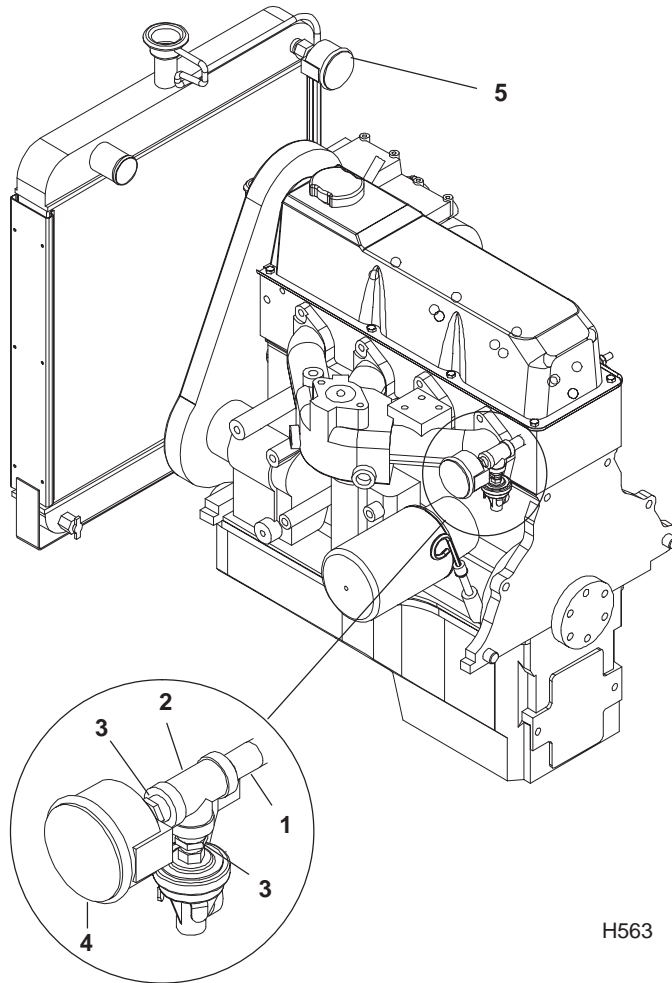


H570,H559,H560

External Engine Parts

REF NO.	PART NO.	QTY USED	PART DESCRIPTION	REF NO.	PART NO.	QTY USED	PART DESCRIPTION
1	101-0823	1	Plate, Engine Rear	28	323-1549	1	+ Connector, Receptacle – 4 Place
2	104-1951	1	Flywheel (Includes Ring Gear)	29	323-1548	1	+ Wedge, Receptacle
3	104-1944	1	Gear, Ring	30	323-1492	4	+ Socket, Contact
4	155-2984	1	Tube, Exhaust	31	234-0665	1	Grille, Air Outlet
5	850-2010	14	Washer, Lock – Spring	32	803-0032	2	Screw, Set – Socket Head (1/4-20 x 1/4)
6	800-2086	9	Screw, Cap – Hex Head (M10 x 1.25 x 25mm)	33	505-0110	1	Plug, Pipe
7	231-0386	1	Adapter, Generator	34	800-2015	2	Screw, Cap – Hex Head (M5 x .8 x 45mm)
8	102-1054-01	1	Adapter, Oil Drain	35	850-2005	2	Washer, Lock – Spring (M5)
9	504-0011	1	Valve, Shut Off (1/2" x 1/2")	36	860-2006	2	Nut, Hex (M5 x .8)
10	505-0185	1	Coupling, Hose (1/2 NPT x 5/8 Hose)	37	416-1019	1	Boot, Battery – Red
11	503-1195	1	Hose (3/4" ID x 12" Long)	38	416-1045	1	Bracket, Battery – Guard
12	503-0197	1	Clamp, Hose	39			Fitting
13	526-2120	10	Washer, Flat (M10)		505-0054	1	Plug, Square (1/4) – Spec A, B
14	800-2088	2	Screw, Cap – Hex Head (M10 x 1.5 x 35mm)			1	Fitting, Vacuum – Ford Part Number P&A E7TZ-9A474-C – Spec C
15	332-2634	3	Clamp, "J"	40	870-2055	1	Nut, Hex Flange
16	856-0010	2	Washer, Lock – ET (M10)	41	505-0395	1	Bushing, Reducer (3/8 x 1/8) – Spec B, C
17	800-2089	3	Screw, Cap – Hex Head (M10 x 1.5 x 40mm)	42	526-0179	2	Washer, Flat (#10)
18	800-2093	2	Screw, Cap – Hex Head (M10 x 1.5 x 60mm)	43	504-0198	1	Vent, Air – Spec B, C
19	416-1046	1	Cable, Battery (Negative)	44	504-0028	1	Cock, Drain – Spec A
20	416-0643	1	Cable, Battery (Positive)	45	166-0845	1	Module, Ignition – Spec A, B (Spec C Ignition Module shown on page 9)
21	337-0090	1	Strap, Electrical	46			Harness, Wiring – Ignition Spec A, B
22	155-3242	1	Shield, Exhaust		166-0844	1	Spec A, B
23	232-3441	4	Washer, End – Bell		166-0868	1	Spec C
24	155-2715	2	Clamp, Muffler (1.75 OD Tube)				
25			Fitting, Water Temperature				
	309-0662	1	Thermostat – Generator Sets With Sentinel Control				
	193-0477	1	Sender, Water Temperature – Generator Sets With Detector Control				
26	505-0007	1	Bushing, Reducer (1/4" to 1/8")				
27			Fitting, Oil Pressure				
	309-0641-19	1	Switch, Oil Pressure – Generator Sets With Sentinel Control (S1)				
	193-0448	1	Sender, Oil Pressure – Generator Sets With Detector Control (Includes Parts Marked +) (E1)				

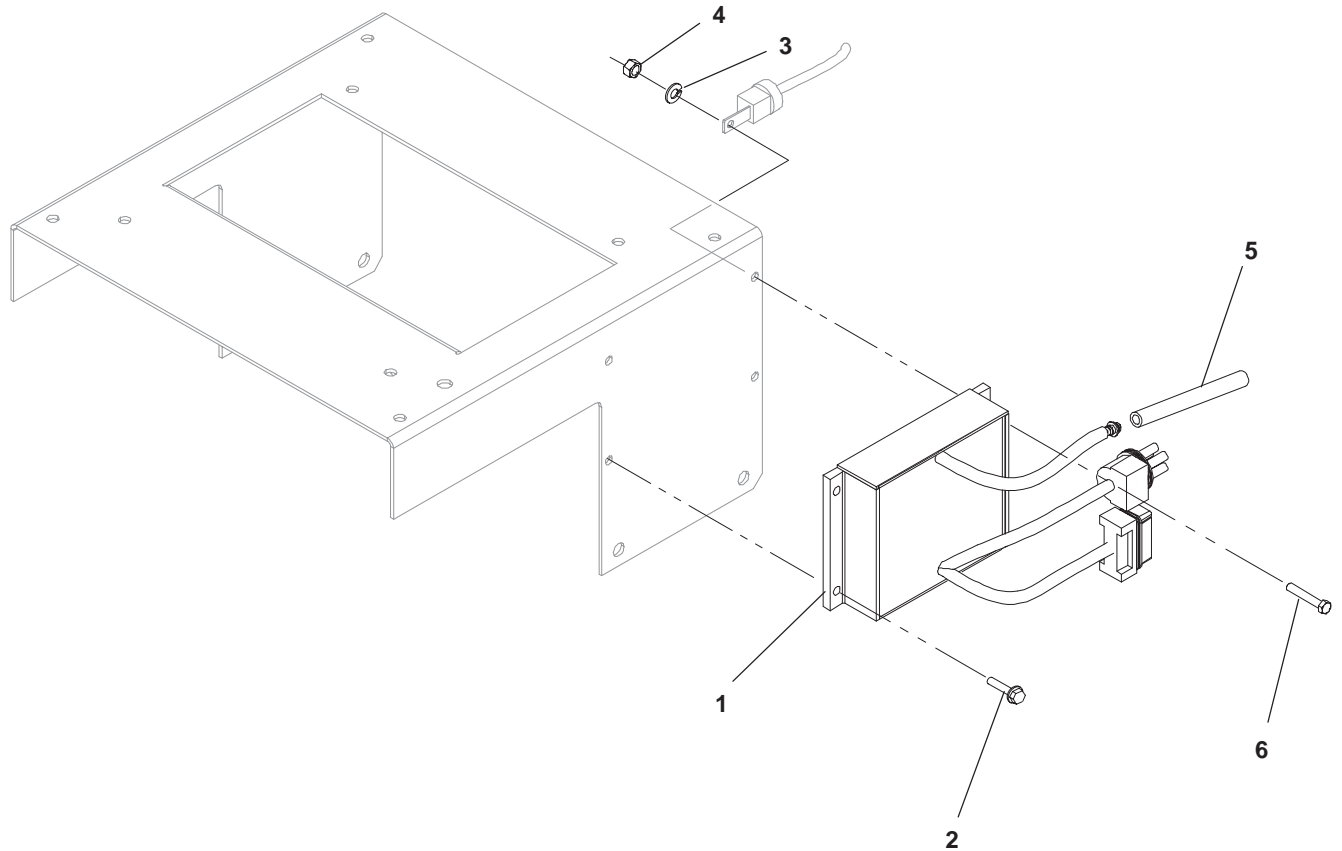
Engine Gauges Sentinel Control



H563

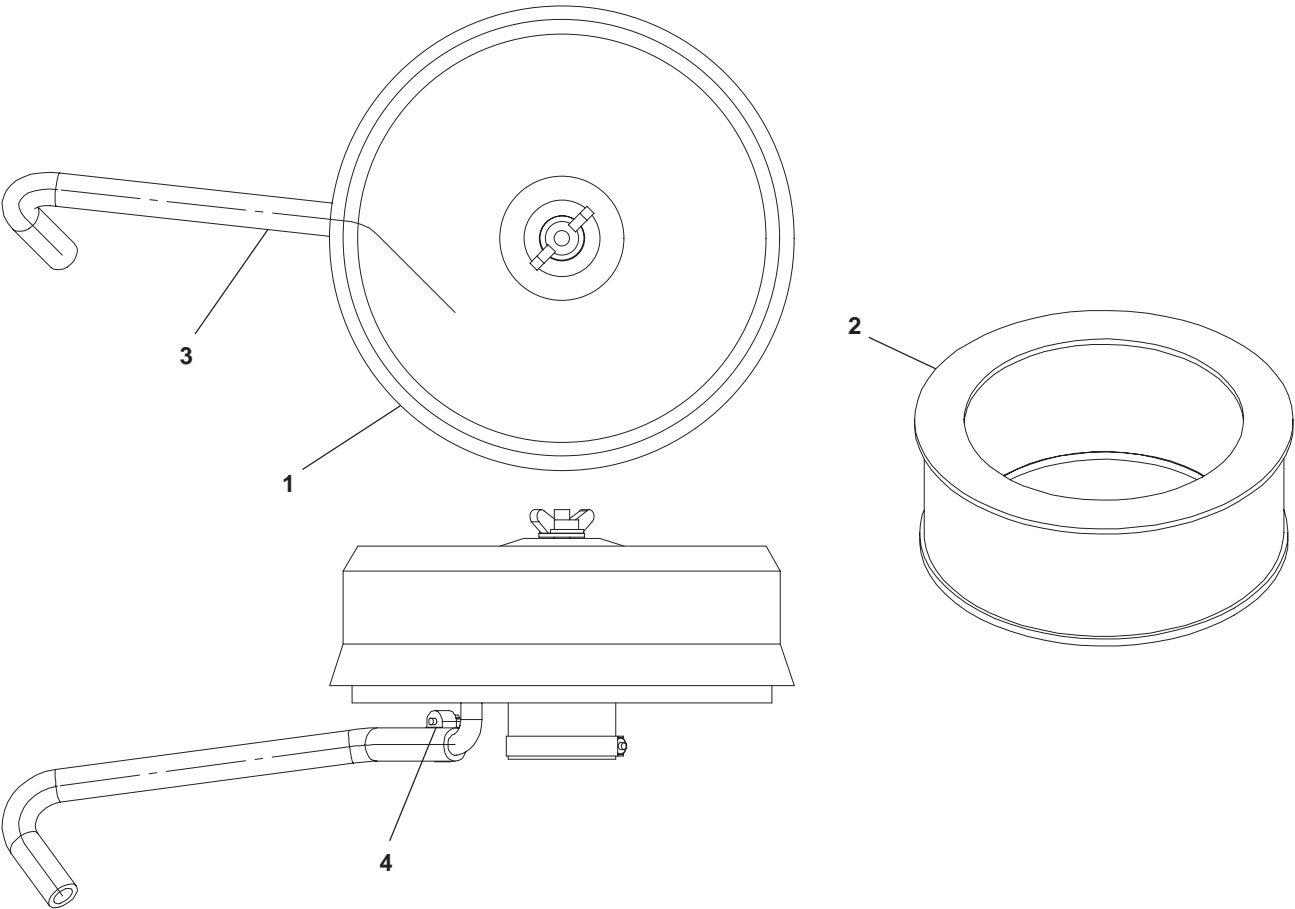
REF NO.	PART NO.	QTY USED	PART DESCRIPTION	REF NO.	PART NO.	QTY USED	PART DESCRIPTION
1	505-0071	1	Nipple, Pipe (1/4 X 2)	4	193-0451	1	Gauge, Oil Pressure
2	505-0184	1	Tee, Pipe	5	193-0463	1	Gauge, Water Temperature
3	505-0007	2	Bushing, Reducer (1/4 x 1/8)				

Ignition Module Spec C



REF NO.	PART NO.	QTY USED	PART DESCRIPTION	REF NO.	PART NO.	QTY USED	PART DESCRIPTION
1	166-0867	1	Module, Ignition	4	860-2006	1	Nut, Hex (M5 x 0.8)
2	815-0793-03	3	Screw, Hex Flange Head – Thread Forming (M5 x 0.8 x 12)	5	503-1338	–	Hose – Bulk (Order By The Foot – 4 Feet Required)
3	850-2005	1	Washer, Lock – Spring (M5)	6	800-2010	1	Screw, Cap – Hex Head (M5 x 0.8 x 20)

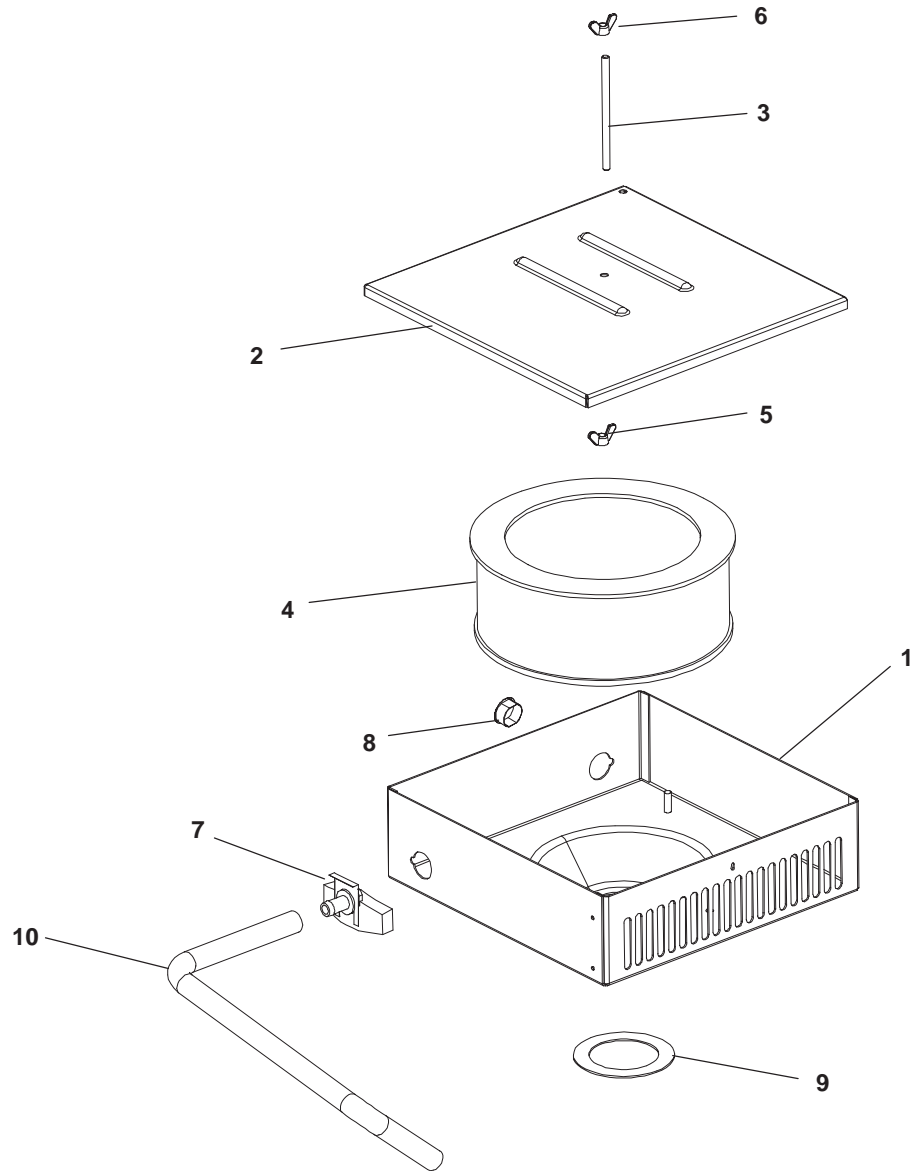
Air Cleaner
Spec A, B



CP01

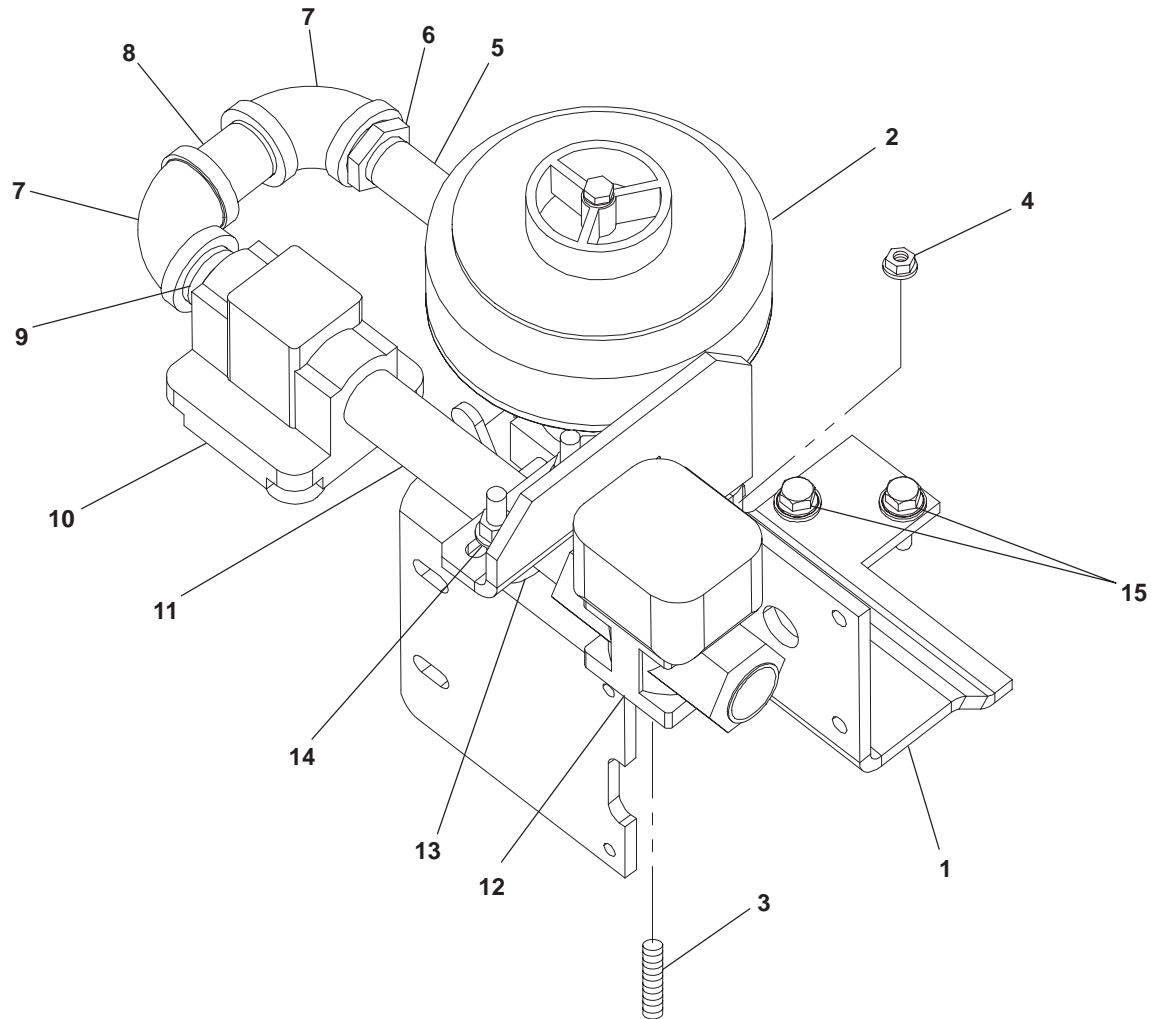
REF NO.	PART NO.	QTY USED	PART DESCRIPTION	REF NO.	PART NO.	QTY USED	PART DESCRIPTION
1	140-1583	1	Cleaner, Air	4	503-0446	1	Clamp, Hose
2	140-1089	1	Element, Air Cleaner				
3	503-1606	-	Hose, Air Cleaner - Bulk (Order By The Foot - 2 Feet Required)				

Air Cleaner Spec C



REF NO.	PART NO.	QTY USED	PART DESCRIPTION	REF NO.	PART NO.	QTY USED	PART DESCRIPTION
1	140-3198-02	1	Housing, Air Cleaner	7	140-3146	1	Breather, Air Cleaner
2	140-3199-02	1	Cover, Air Cleaner	8	517-0289	1	Plug, Hole
3	520-1014	1	Stud (1/4-20 x 3.12)	9	140-3202	1	Gasket, Air Cleaner
4	140-3147	1	Filter, Air	10	503-1606	-	Hose, Breather - Bulk (Order By The Foot - 2 Feet Required)
5	865-0006	1	Nut, Wing (1/4-20)				
6	865-0020	1	Nut, Wing (1/4-20)				

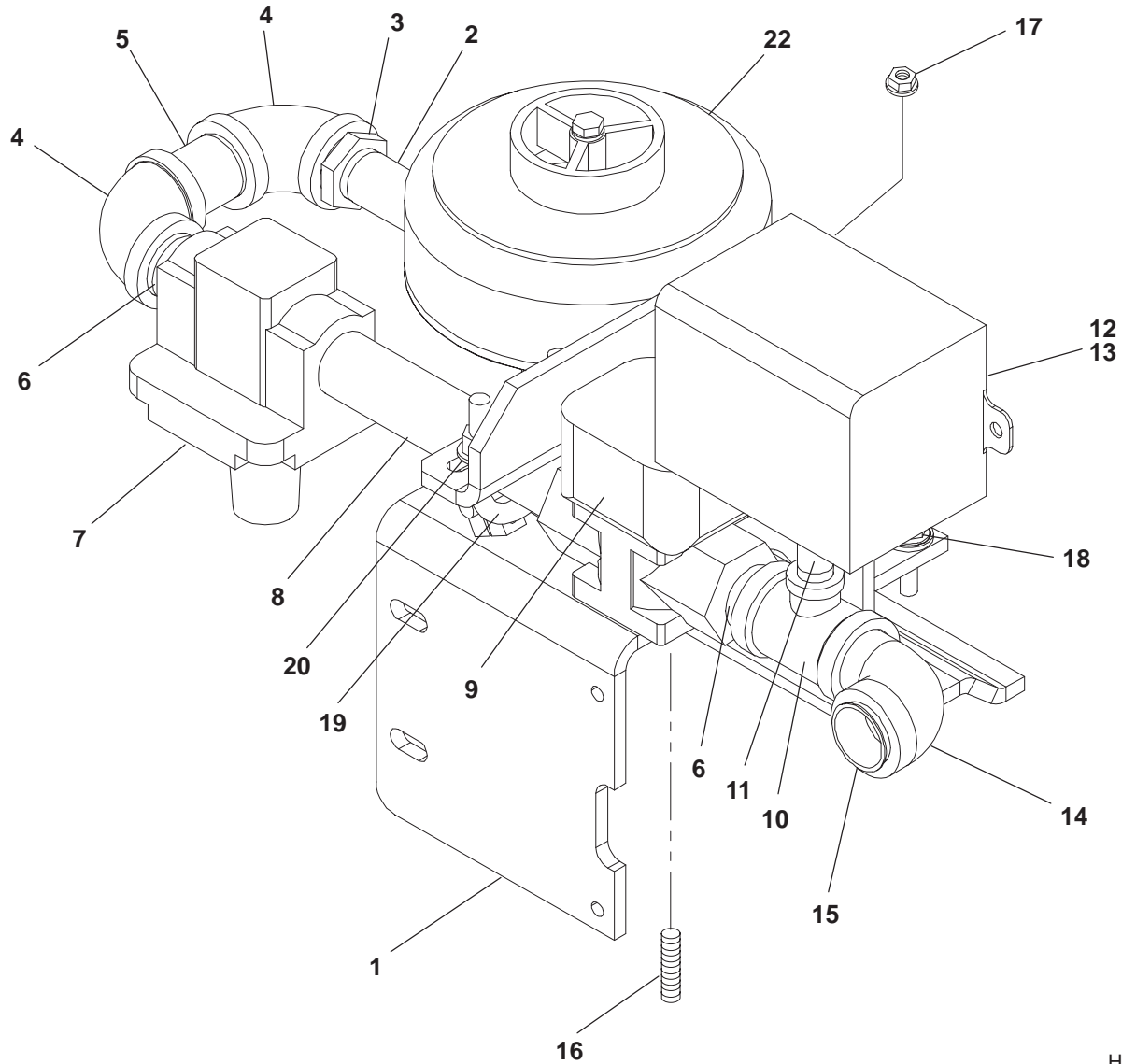
Fuel System Natural Gas



C002

REF NO.	PART NO.	QTY USED	PART DESCRIPTION	REF NO.	PART NO.	QTY USED	PART DESCRIPTION
1	150-2689	1	Bracket, Mounting – Carburetor	8	505-0085	1	Nipple, Pipe (3/4 NPT x 2.0)
2	148-1104	1	Carburetor	9	505-0102	1	Nipple, Close (3/4 x 1-1/4)
3	520-2214-02	2	Stud (M8 x 1.25 x 48)	10	148-0597	1	Regulator, Natural Gas
4	870-2055	2	Nut, Lock – Flange (M8 x 1.25)	11	505-0754	1	Nipple, Pipe (3/4 NPT x 6.0)
5	505-0002	1	Nipple, Pipe (1/2 NPT x 3.0)	12	307-0312	1	Valve, Solenoid
6	505-0021	1	Bushing, Reducer (3/4 NPT)	13	155-1256	1	Clamp, Muffler
7	505-0132	2	Elbow, Pipe (90°) (3/4)	14	526-2100	2	Washer, Flat (M8)
				15	821-6003-03	2	Screw, Hex Head (M8 x 25)

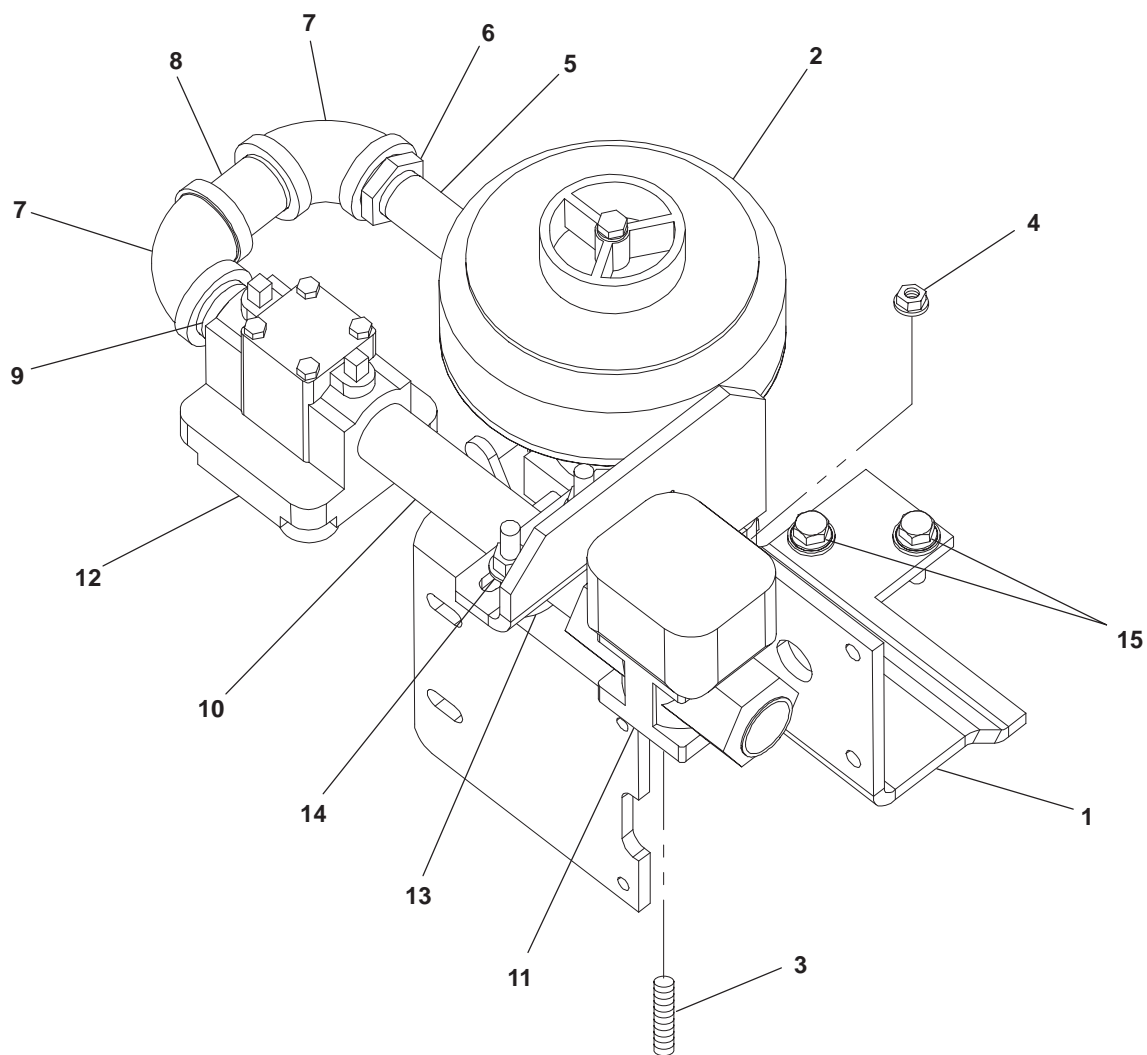
**Fuel System
Natural Gas
With Low Fuel Pressure Warning Switch
Spec B, C**



H569,C002

REF NO.	PART NO.	QTY USED	PART DESCRIPTION	REF NO.	PART NO.	QTY USED	PART DESCRIPTION
1	150-2689	1	Bracket, Governor	12	148-0998	1	Switch, Pressure (12V)
2	505-0002	1	Nipple, Pipe (1/2 x 3.00)	13	331-0027	1	Connector, Box
3	505-0021	1	Bushing, Reducer (3/4 x 1/2)	14	505-0051	1	Elbow, Street – 90° (3/4)
4	505-0132	2	Elbow, Pipe	15	505-0094	1	Plug, Hole
5	505-0085	1	Nipple, Pipe (3/4 x 2.00)	16	520-2214-02	2	Stud (M8 x 1.25)
6	505-0102	2	Nipple, Close (3/4)	17	870-2055	2	Nut, Lock – Flanged
7	148-0597	1	Regulator, Natural Gas	18	821-6003-03	2	Screw, Hex Head (M8 x 1.25 x 25)
8	505-0754	1	Nipple, Pipe (3/4 x 6.00)	19	155-1256	1	Clamp, Muffler (1.5")
9	307-0312	1	Valve, Solenoid (12V)	20	526-2100	2	Washer, Flat (M8)
10	505-1496	1	Tee, Reducing	21	148-1104	1	Carburetor
11	505-0105	1	Nipple, Pipe (1/4 x 1.50)				

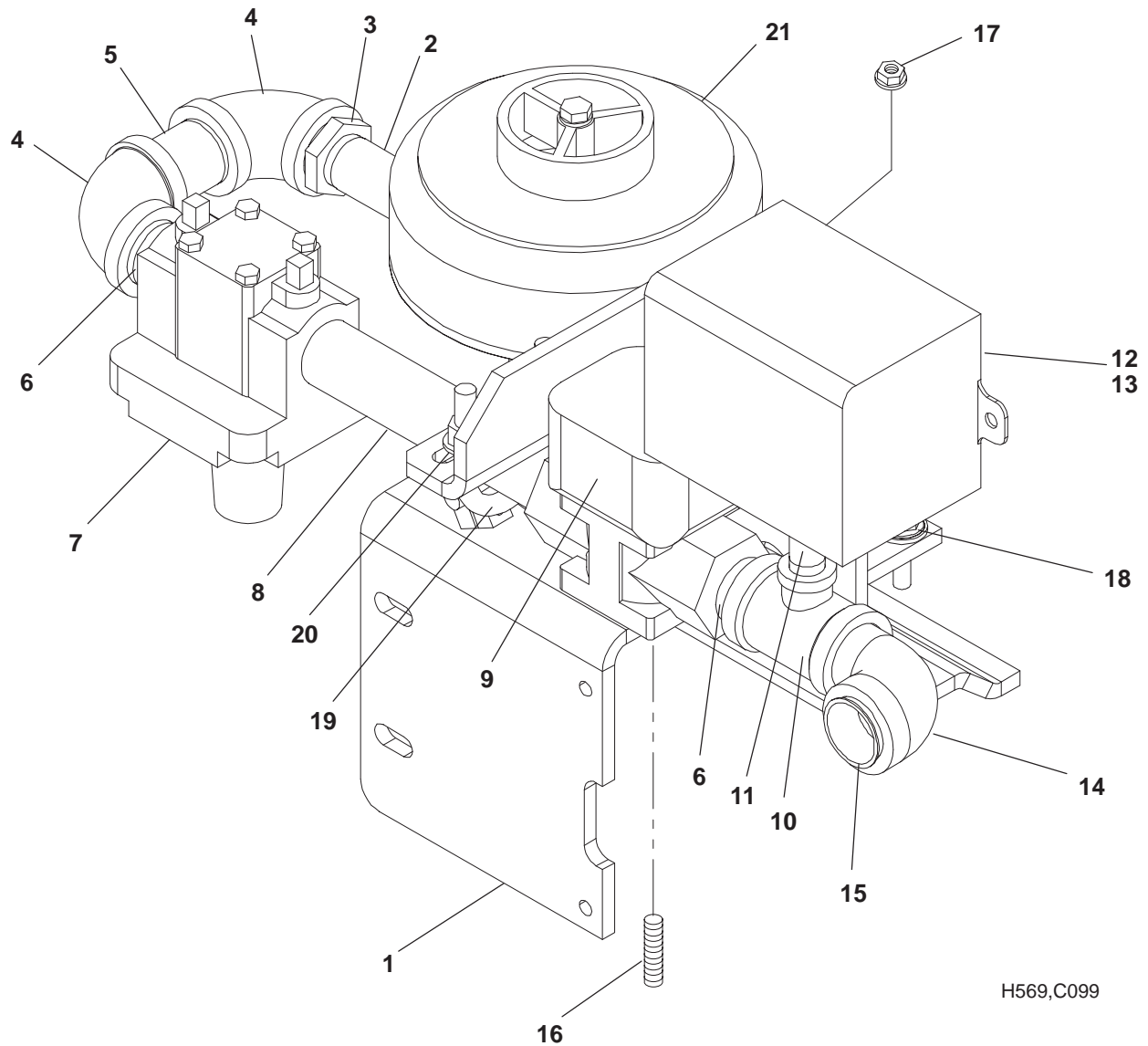
Fuel System Propane Vapor



C099

REF NO.	PART NO.	QTY USED	PART DESCRIPTION	REF NO.	PART NO.	QTY USED	PART DESCRIPTION
1	150-2689	1	Bracket, Mounting – Carburetor	8	505-0085	1	Nipple, Pipe (3/4 NPT x 2.0)
2	148-1104	1	Carburetor	9	505-0102	1	Nipple, Close (3/4 x 1-1/4)
3	520-2214-02	2	Stud (M8 x 1.25 x 48)	10	505-0754	1	Nipple, Pipe (3/4 NPT x 6.0)
4	870-2055	2	Nut, Lock – Flange (M8 x 1.25)	11	307-0312	1	Valve, Solenoid
5	505-0002	1	Nipple, Pipe (1/2 NPT x 3.0)	12	148-0637	1	Regulator, LPG Vapor
6	505-0021	1	Bushing, Reducer (3/4 NPT)	13	155-1256	1	Clamp, Muffler
7	505-0132	2	Elbow, Pipe (90°) (3/4)	14	526-2100	2	Washer, Flat (M8)
				15	821-6003-03	2	Screw, Hex Head (M8 x 25)

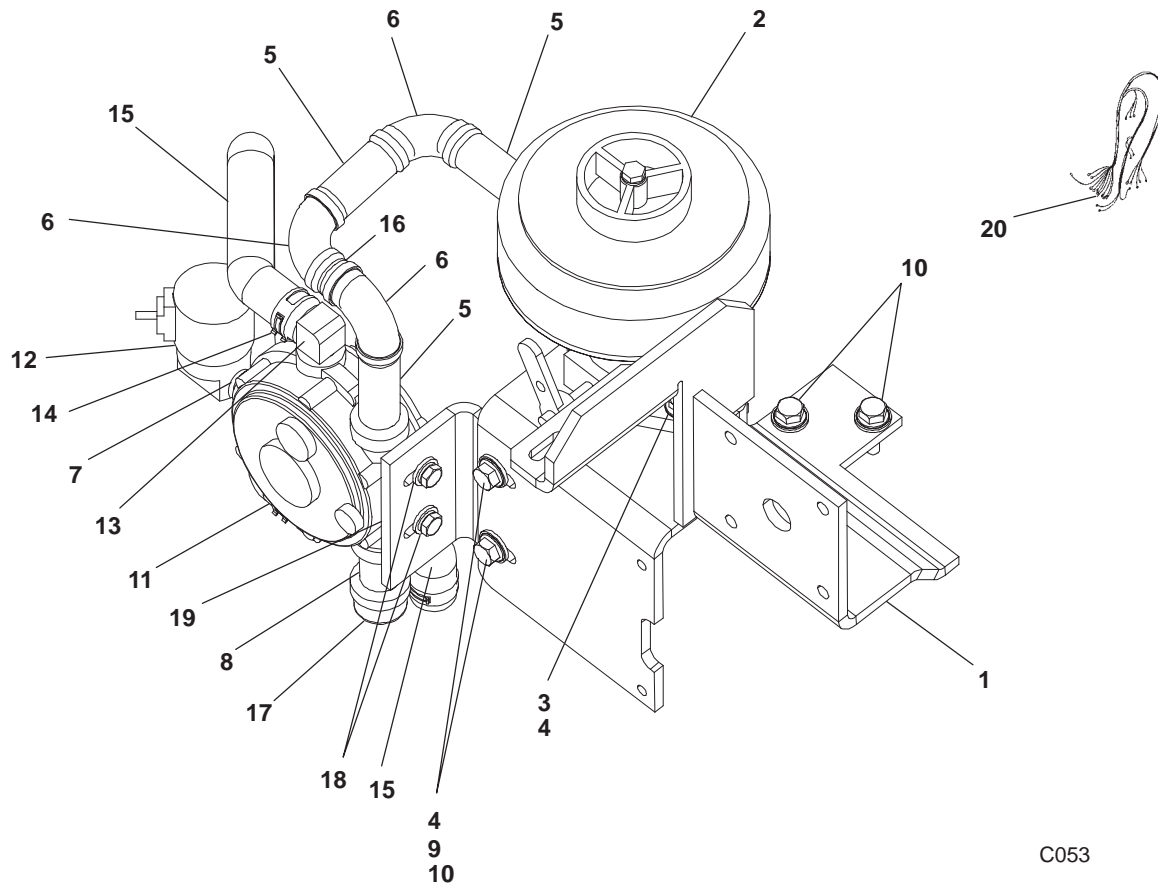
**Fuel System
Propane Vapor
With Low Fuel Pressure Warning Switch
Spec B, C**



H569,C099

REF NO.	PART NO.	QTY USED	PART DESCRIPTION	REF NO.	PART NO.	QTY USED	PART DESCRIPTION
1	150-2689	1	Bracket, Governor	12	148-0998	1	Switch, Pressure (12V)
2	505-0002	1	Nipple, Pipe (1/2 x 3.00)	13	331-0027	1	Connector, Box
3	505-0021	1	Bushing, Reducer (3/4 x 1/2)	14	505-0051	1	Elbow, Street – 90° (3/4)
4	505-0132	2	Elbow, Pipe	15	505-0094	1	Plug, Hole
5	505-0085	1	Nipple, Pipe (3/4 x 2.00)	16	520-2214-02	2	Stud (M8 x 1.25)
6	505-0102	2	Nipple, Close (3/4)	17	870-2055	2	Nut, Lock – Flanged
7	148-0637	1	Regulator, LPG Vapor	18	821-6003-03	2	Screw, Hex Head (M8 x 1.25 x 25)
8	505-0754	1	Nipple, Pipe (3/4 x 6.00)	19	155-1256	1	Clamp, Muffler (1.5")
9	307-0312	1	Valve, Solenoid (12V)	20	526-2100	2	Washer, Flat (M8)
10	505-1496	1	Tee, Reducing	21	148-1104	1	Carburetor
11	505-0105	1	Nipple, Pipe (1/4 x 1.50)				

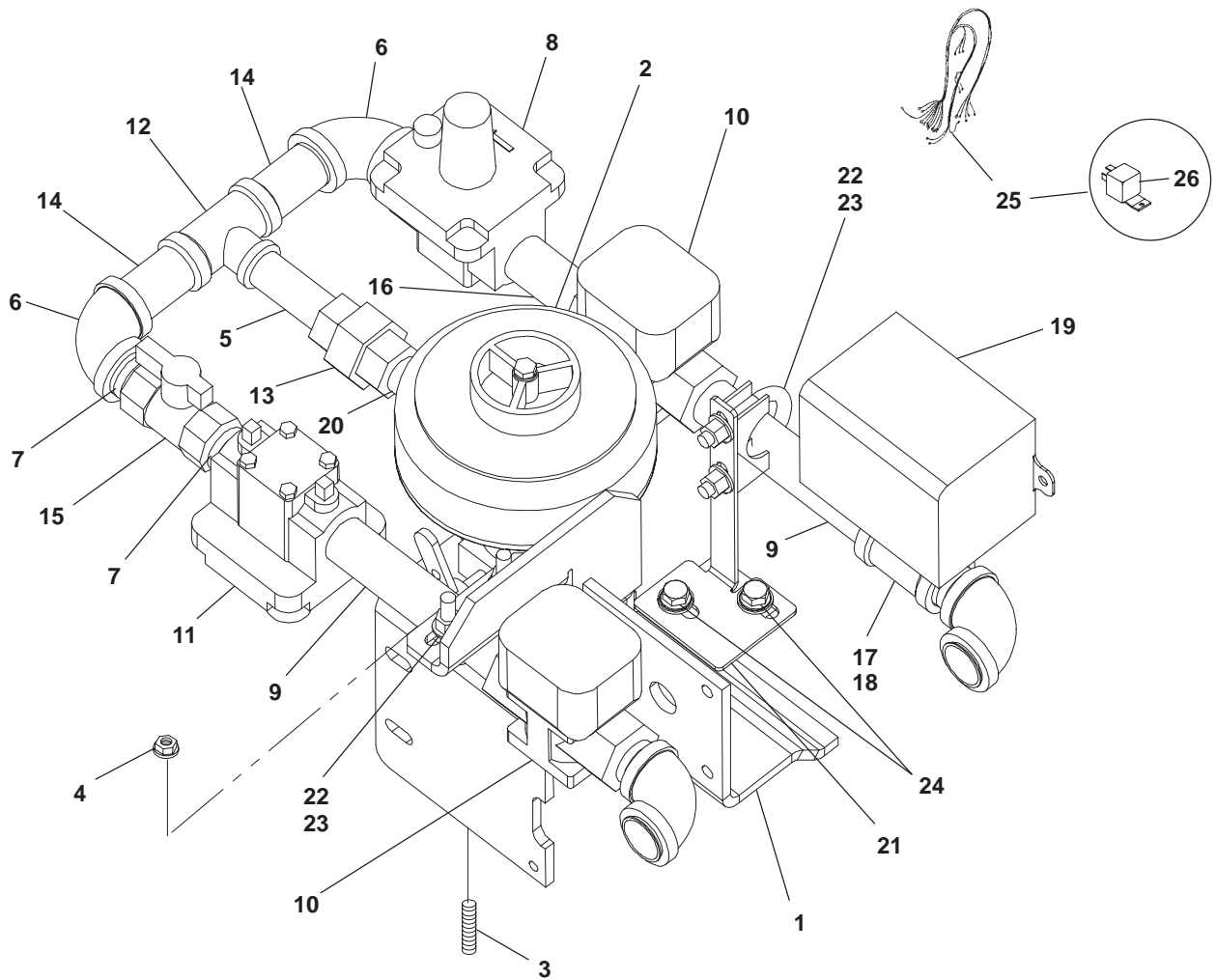
Fuel System Propane Liquid



C053

REF NO.	PART NO.	QTY USED	PART DESCRIPTION	REF NO.	PART NO.	QTY USED	PART DESCRIPTION
1	150-2689	1	Bracket, Mounting – Carburetor	10	821-6003-03	4	Screw, Hex Head (M8 x 25)
2	148-1104	1	Carburetor	11	148-0737	1	Regulator
3	520-2214-02	2	Stud (M8 x 1.25 x 48)	12	307-0268-01	1	Valve, Solenoid
4	870-2055	4	Nut, Lock – Flange (M8 x 1.25)	13	502-0942	2	Connector, Hose (90°)
5	505-0002	3	Nipple, Pipe (1/4" x 3)	14	503-0131	4	Clamp, Hose
6	505-0040	3	Elbow, Pipe – 90° (1/2)	15	503-1169	2	Hose, Flex – (5/8" ID x 48")
7	505-0099	1	Nipple, Pipe (1/4 x .88)	16	505-0100	1	Nipple, Pipe (1/2 x 1-1/8)
8	505-0210	1	Nipple, Pipe (1/2 x 2)	17	505-0158	1	Cap, Pipe (1/2)
9	526-2100	2	Washer, Flat (M8)	18	526-0399-13	2	Washer, Flat (1/4)
				19	149-2622	1	Bracket, Support
				20	338-3654	1	Harness, LPG

Fuel System Natural Gas/Propane Vapor

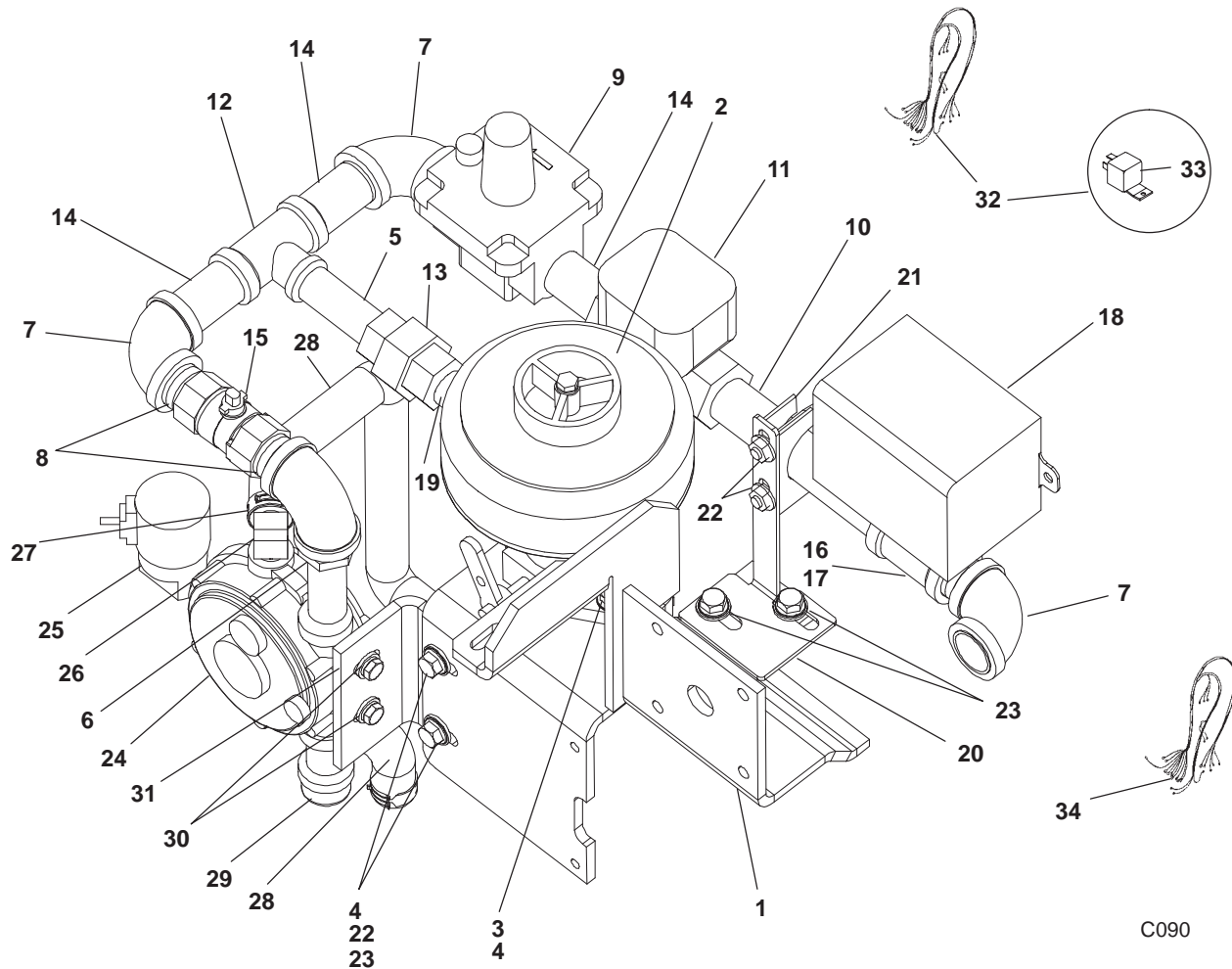


C065

REF NO.	PART NO.	QTY USED	PART DESCRIPTION	REF NO.	PART NO.	QTY USED	PART DESCRIPTION
1	150-2689	1	Bracket, Mounting – Carburetor	15	504-0171	1	Valve (3/4)
2	148-1104	1	Carburetor	16	505-0332	1	Nipple, Pipe (3/4 NPT x 3.0)
3	520-2214-02	2	Stud (M8 x 1.25 x 48)	17	505-1496	1	Tee, Reducing
4	870-2055	2	Nut, Lock – Flange (M8 x 1.25)	18	505-0099	1	Nipple, Pipe (1/4 NPT x .88)
5	505-0002	1	Nipple, Pipe (1/2 x 3)	19	148-0998	1	Switch, Pressure (12 Volt)
6	505-0132	4	Elbow, Pipe (90°) (3/4)	20	505-0210	1	Nipple, Pipe (1/2 NPT x 2.0)
7	505-0102	5	Nipple, Close (3/4 x 1-3/8)	21	149-2617	1	Bracket, Support
8	148-0597	1	Regulator, Natural Gas	22	155-1256	2	Clamp, Muffler
9	505-0754	2	Nipple, Pipe (3/4 NPT x 6.0)	23	526-2100	4	Washer, Flat (M8)
10	307-0312	2	Valve, Solenoid	24	821-6003-03	2	Screw, Hex Head, (M8 x 1.25 x 25)
11	148-0637	1	Regulator, LPG Vapor	25			Harness, Dual Fuel – Includes Relay
12	505-0167	1	Tee, Reducing		338-3698	1	Spec A, B
13	505-0150	1	Union, Ground Joint (1/2 NPT)		338-3816	1	Spec C
14	505-0084	2	Nipple, Pipe (3/4 NPT x 2.5)	26	307-2817-01	1	Relay (12 Volt) (K99)

Fuel System

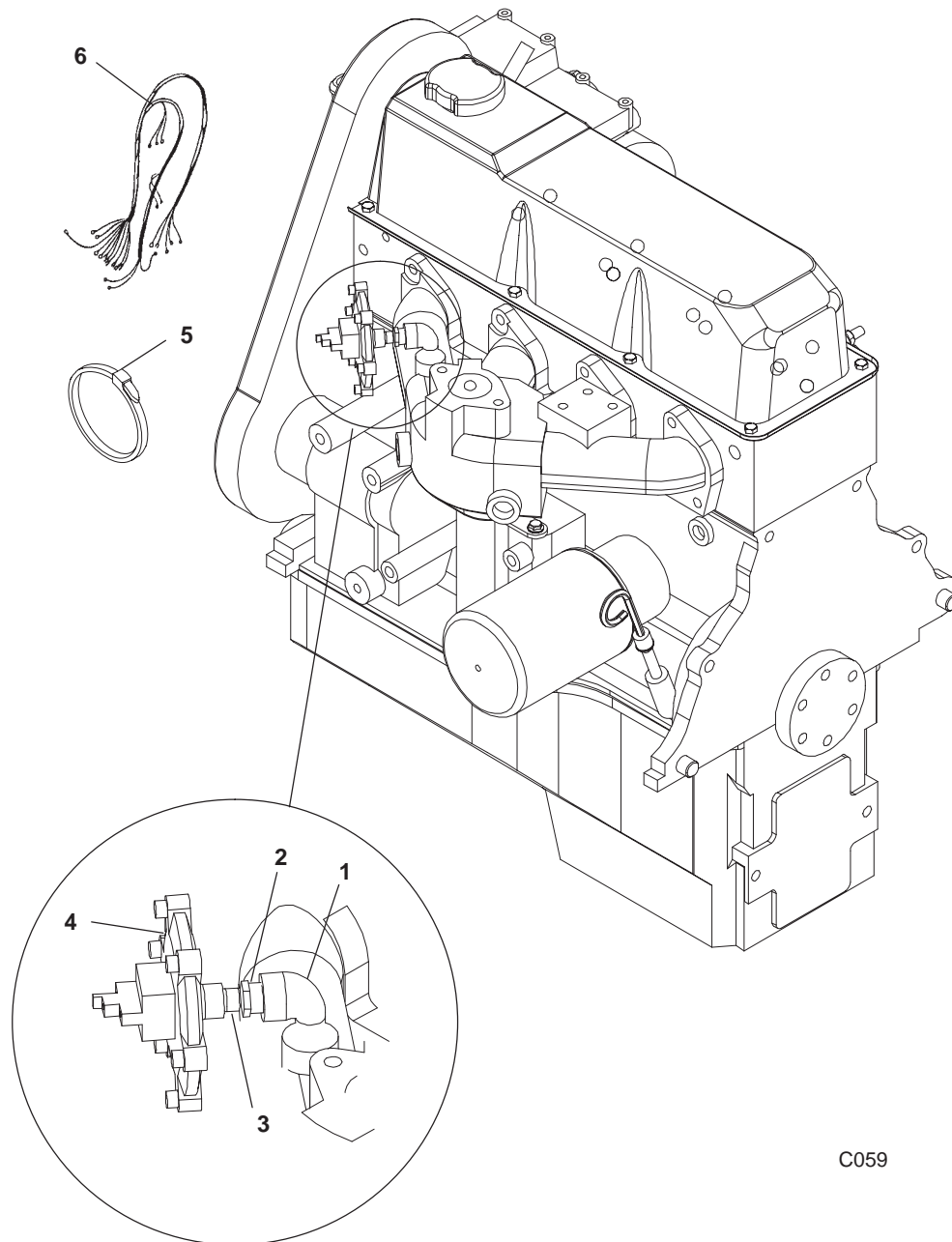
Natural Gas/Propane Liquid With Automatic Changeover



C090

REF NO.	PART NO.	QTY USED	PART DESCRIPTION	REF NO.	PART NO.	QTY USED	PART DESCRIPTION
1	150-2689	1	Bracket, Mounting – Carburetor	18	148-0998	1	Switch, Pressure (12 Volt)
2	148-1104	1	Carburetor	19	505-0210	2	Nipple, Pipe (1/2 NPT x 2.0)
3	520-2214-02	2	Stud (M8 x 1.25 x 48)	20	149-2617	1	Bracket, Support
4	870-2055	4	Nut, Lock – Flange (M8 x 1.25)	21	155-1256	1	Clamp, Muffler
5	505-0002	2	Nipple, Pipe (1/2 NPT x 3.0)	22	526-2100	4	Washer, Flat (M8)
6	505-0021	1	Bushing, Reducer (3/4 NPT)	23	821-6003-03	4	Screw, Hex Head (M8 x 1.25 x 25)
7	505-0132	4	Elbow, Pipe (90°) (3/4")	24	148-0737	1	Regulator
8	505-0102	4	Nipple, Close (3/4 NPT x 1-3/8)	25	307-0268-01	1	Valve, Solenoid
9	148-0597	1	Regulator, Natural Gas	26	502-0942	2	Connector, Hose (90°)
10	505-0754	1	Nipple, Pipe (3/4 NPT x 6.0)	27	503-0131	4	Clamp, Hose
11	307-0312	1	Valve, Solenoid	28	503-1169	2	Hose, Flex – (5/8" ID x 48")
12	505-0167	1	Tee, Reducing	29	505-0158	1	Cap, Pipe (1/2 NPT)
13	505-0150	1	Union, Ground Joint (1/2 NPT)	30	526-0399-13	2	Washer, Flat (1/4)
14	505-0084	3	Nipple, Pipe (3/4 NPT x 2.5)	31	149-2622	1	Bracket, Support
15	504-0171	1	Valve (3/4)	32			Harness, Dual Fuel – Includes Relay
16	505-1496	1	Tee, Reducing		338-3698	1	Spec A, B
17	505-0099	2	Nipple, Pipe (1/4 NPT x .88)		338-3816	1	Spec C
				33	307-2817-01	1	Relay (12 Volt) (K99)
				34	338-3654	1	Harness, LPG

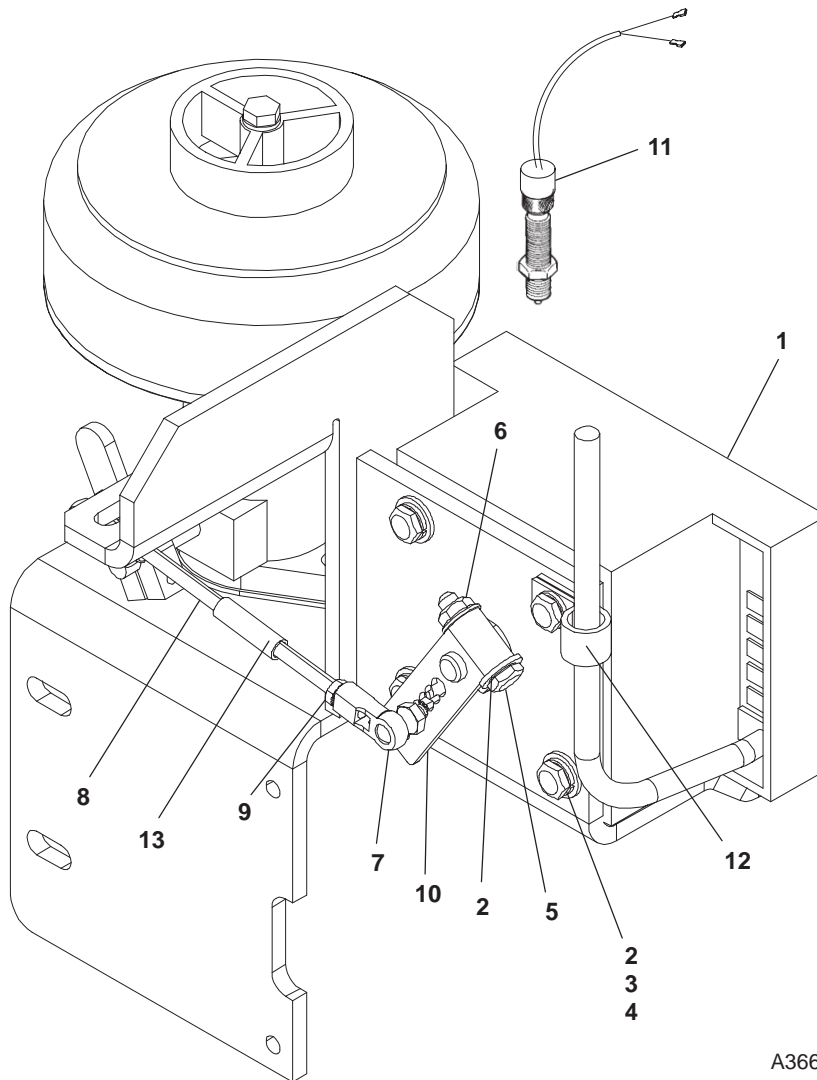
Vacuum Switch



C059

REF NO.	PART NO.	QTY USED	PART DESCRIPTION	REF NO.	PART NO.	QTY USED	PART DESCRIPTION
1	505-0011	1	Elbow, Street	4	148-1099	1	Switch, Vacuum
2	505-0007	1	Bushing, Reducer (1/4 NPT x 1/8 NPT)	5	332-1794	A/R	Tie, Cable
3	505-0098	1	Nipple, Pipe (1/8 NPT x .75)	6	338-3667	1	Harness, Vacuum Switch

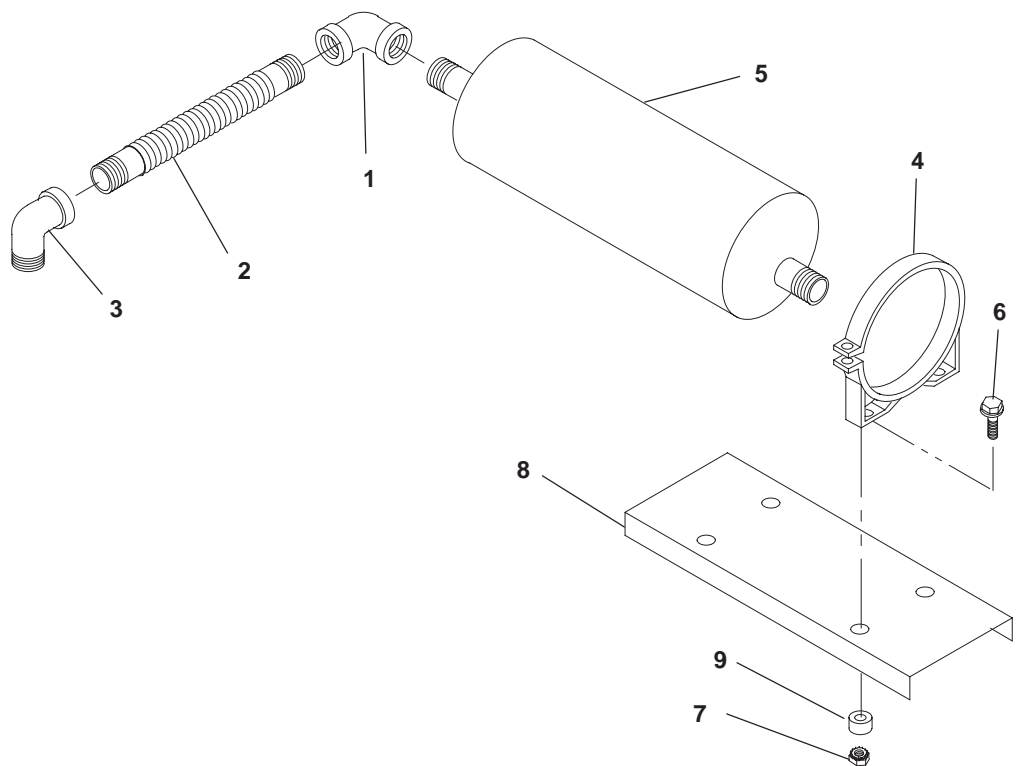
Governor



A366

REF NO.	PART NO.	QTY USED	PART DESCRIPTION	REF NO.	PART NO.	QTY USED	PART DESCRIPTION
1	150-2692-01	1	Governor (Includes Lever) (A12)	6	870-0212	1	Nut, Locking (1/4-20)
2	526-0018	5	Washer, Flat (1/4)	7	150-0939	2	Joint, Ball
3	850-0040	4	Washer, Split - Lock (1/4)	8	150-2694	1	Stud, Governor Link
4	800-0602	4	Screw, Cap - Hex Head (1/4-28 x .75)	9	870-0131	4	Nut, W/ET (#10-32)
5	800-0008	1	Screw, Cap - Hex Head (1/4-20 x 1_1/4)	10	150-2620	1	Lever, Governor
				11	150-2651	1	Pickup, Magnetic (P1)
				12	332-1554	1	Clamp, Loop (Insulated)
				13	150-2550	1	Spring

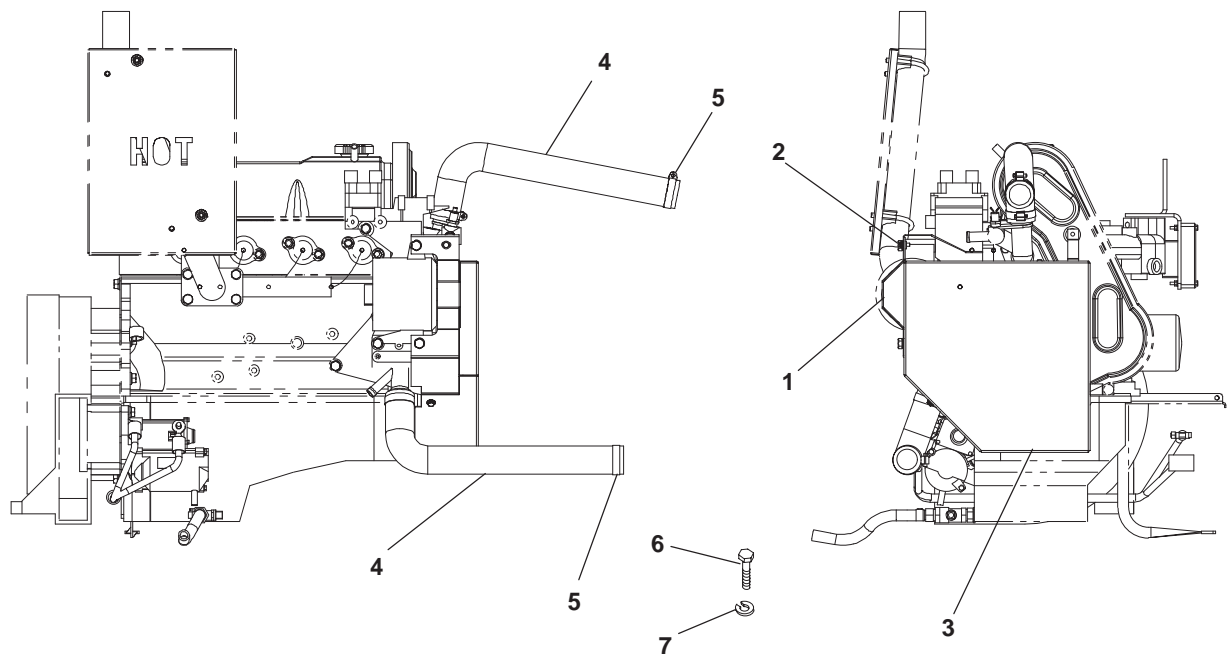
Muffler Housed Sets



A076

REF NO.	PART NO.	QTY USED	PART DESCRIPTION	REF NO.	PART NO.	QTY USED	PART DESCRIPTION
1	505-0043	1	Elbow, 90° (1-1/2")	6	821-2050	4	Screw, Lock (M8 x 1.25 x 40)
2	155-0927	1	Tube, Exhaust	7	870-2055	4	Nut, Lock (M8 x 1.25)
3	505-0462	1	Elbow, Street 90° (1-1/2")	8	155-1924	1	Shield, Heat - Muffler
4	140-0078	2	Bracket, Air Cleaner	9	155-1926	4	Spacer, Muffler
5	155-0360-01	1	Muffler, Critical				

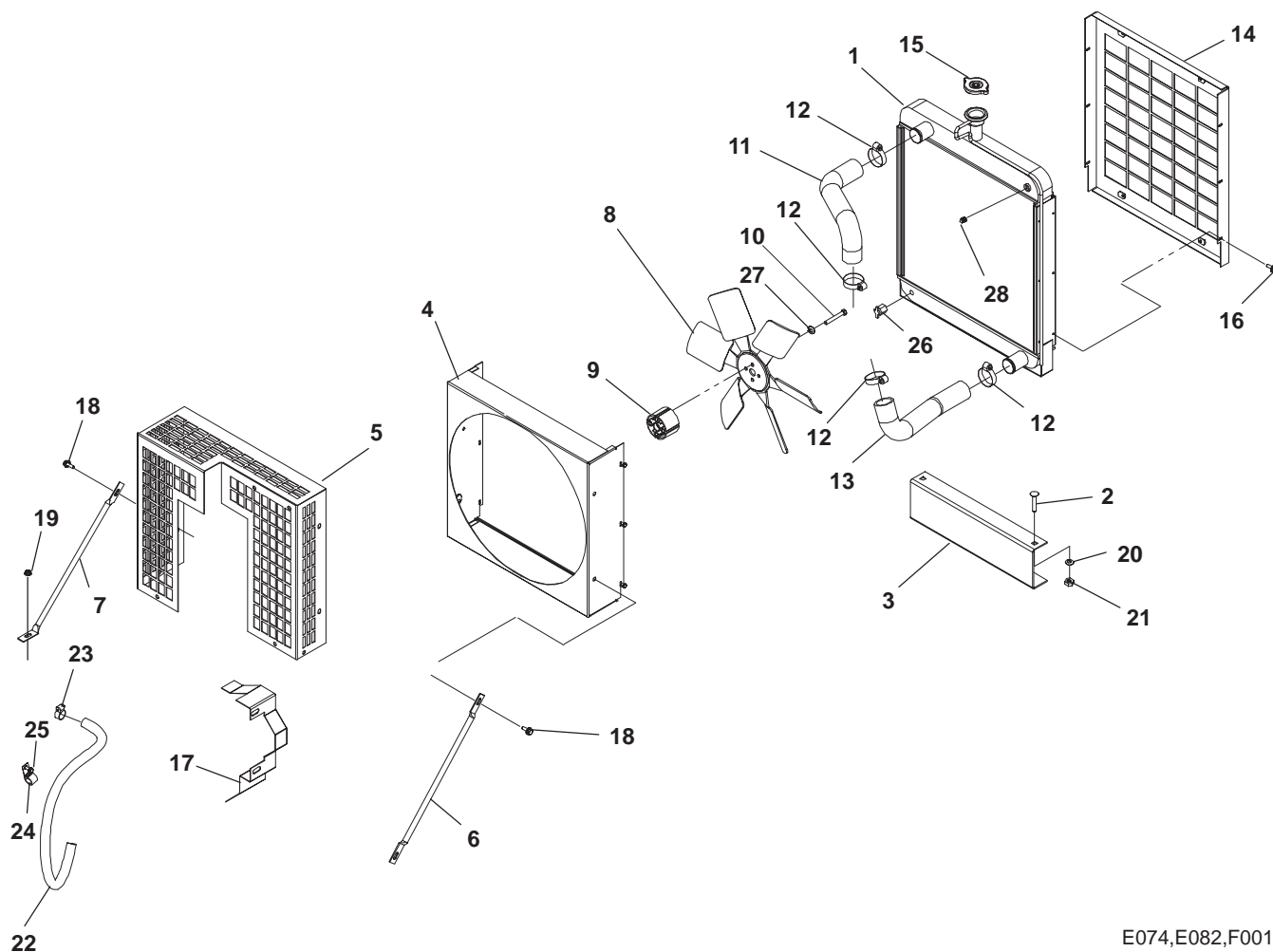
Remote Radiator



E043

REF NO.	PART NO.	QTY USED	PART DESCRIPTION	REF NO.	PART NO.	QTY USED	PART DESCRIPTION
1	191-2268-02	1	Guard, Alternator Belt	5	503-1138	4	Clamp, Hose
2	821-2032	2	Screw, Lock (M6 x 1 x 12)	6	800-2056	4	Screw, Cap – Hex Head (M8 x 1.25 x 16)
3	191-2263	1	Guard, Belt	7	850-2008	4	Washer, Lock (M8)
4	503-0869	2	Hose, Radiator				

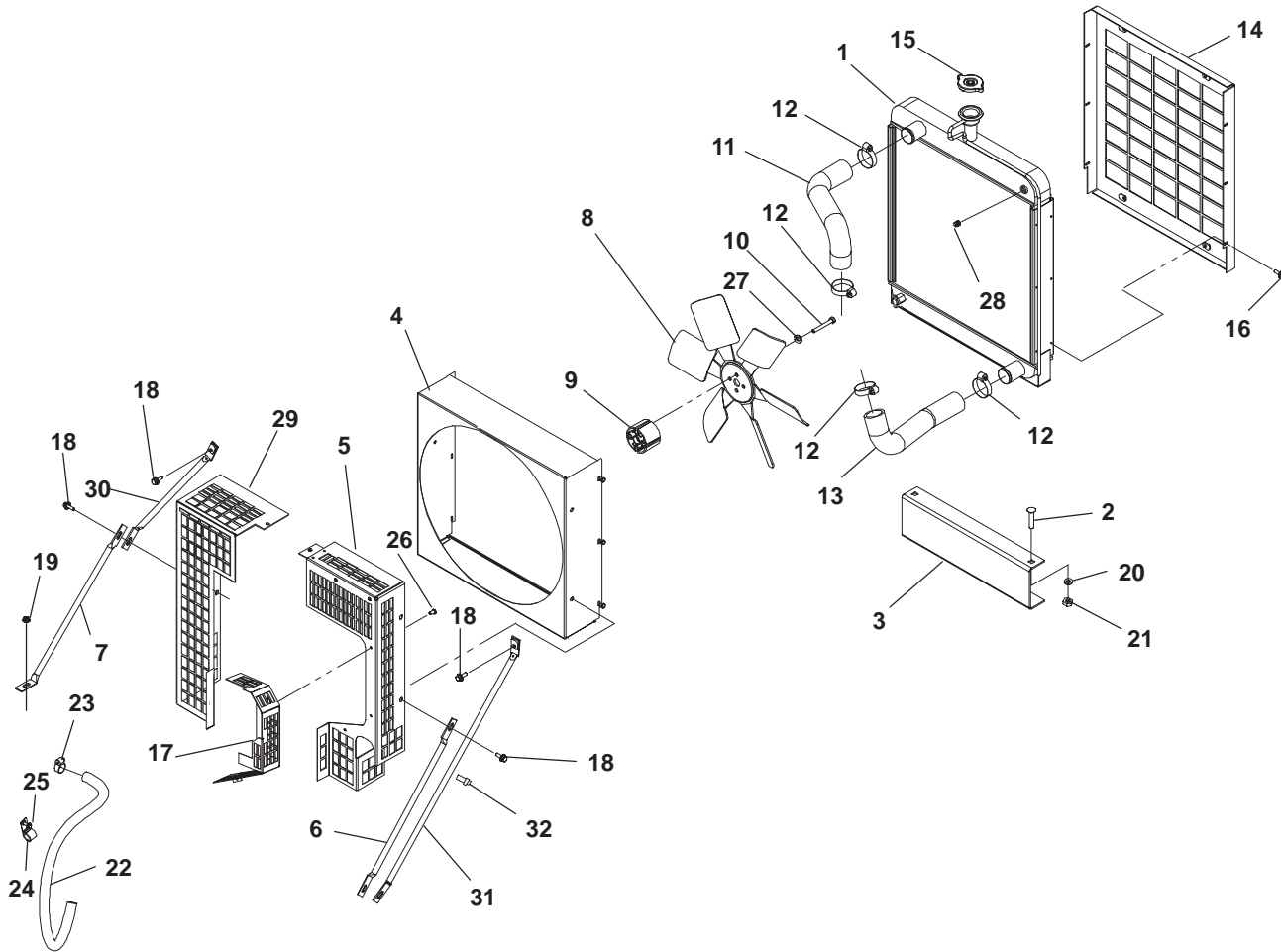
Radiator Spec A



E074,E082,F001

REF NO.	PART NO.	QTY USED	PART DESCRIPTION	REF NO.	PART NO.	QTY USED	PART DESCRIPTION
1	130-3552	1	Radiator	16			Screw, Hex Head – Thread Cutting (#10-32 x 3/8)
2	816-0152	2	Bolt, Carriage (3/8 x 2)		815-0194	6	Housed Sets
3	130-4796	1	Mount, Radiator		815-0194	12	Unhoused Sets
4	130-4856	1	Shroud, Fan	17	191-2268-01	1	Guard, Alternator Belt
5	130-4839	1	Guard, Fan	18	821-6003-02	7	Screw, Hex Head (M8 x 1.25 x 20)
6	130-1793	1	Brace, Radiator (LH)	19	870-0257	1	Nut, Self-Locking (5/16-18)
7	130-1798	1	Brace, Radiator (RH)	20	526-0141	2	Washer, Flat (15/32)
8	130-4792	1	Fan, Engine	21	870-0281	2	Nut, Hex (3/8-16)
9	130-4770-03	1	Spacer, Fan	22	503-1168	1	Hose, Engine Coolant
10	800-2070	4	Screw, Hex Head Cap (M8 x 1.25 x 85)	23	503-0183	2	Clamp, Hose
11	503-2085	1	Hose, Radiator Inlet (Top)	24	332-2634	1	Clamp, J
12	503-0429	4	Clamp, Hose	25	821-2033	1	Screw, Flange (M6 x 1 x 12)
13	503-2092	1	Hose, Radiator Outlet (Bottom)	26	504-0003	1	Cock, Drain
14	130-4833	1	Guard, Radiator (Unhoused Sets only)	27	850-2008	4	Washer, Lock (M8)
15	130-3721-01	1	Cap, Radiator	28	502-0153	1	Plug, 1/4" Hex Head Pipe

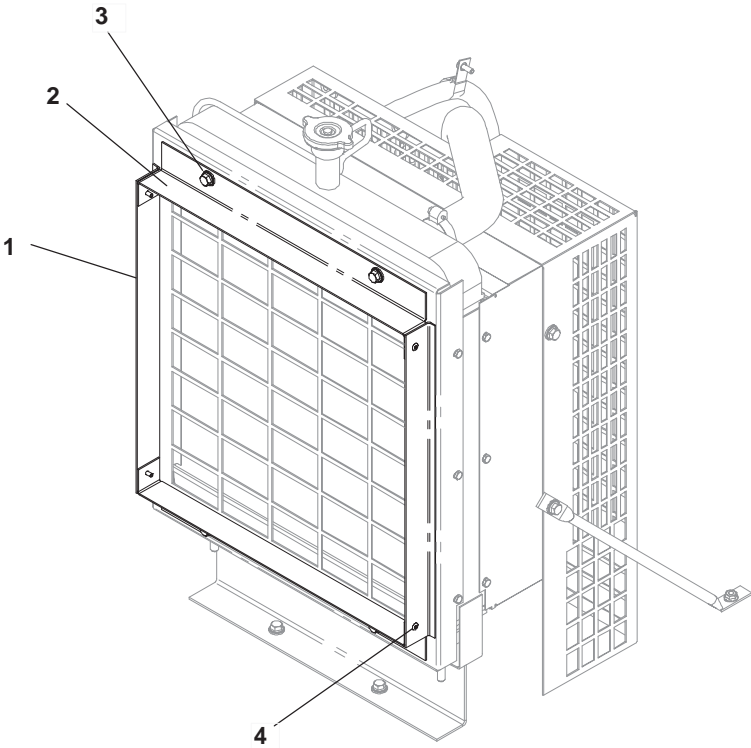
Radiator Spec B, C



E074,F173,F184

REF NO.	PART NO.	QTY USED	PART DESCRIPTION	REF NO.	PART NO.	QTY USED	PART DESCRIPTION
1	130-3552	1	Radiator	16			Screw, Hex Head (M8 x 1.25 x 20)
2	816-0152	2	Bolt, Carriage (3/8-16 x 2)		815-0194	6	Housed Sets
3	130-4796	1	Mount, Radiator		815-0194	12	Unhoused Sets
4	130-5003-02	1	Shroud, Fan	17	191-2276-02	1	Guard, Alternator Belt
5	130-4959-02	1	Guard, Fan (LH)	18	821-6003-02	9	Screw, Hex Head (M8 x 1.25 x 20)
6	130-1793	1	Brace, Radiator (LH)	19	870-0257	1	Nut, Self-Locking (5/16-18)
7	130-1798	1	Brace, Radiator (RH)	20	526-0141	2	Washer, Flat (15/32)
8	130-4792	1	Fan, Engine	21	870-0281	2	Nut, Hex (3/8-16)
9	130-4770-03	1	Spacer, Fan	22	503-1168	1	Hose, Engine Coolant
10	800-2071	4	Screw, Cap - Hex Head (M8 x 1.25 x 90)	23	503-0183	2	Clamp, Hose
11	503-2085	1	Hose, Radiator Inlet (Top)	24	332-2634	1	Clamp, J
12	503-0429	4	Clamp, Hose	25	821-2033	1	Screw, Flange (M6 x 1 x 12)
13	503-2092	1	Hose, Radiator Outlet (Bottom)	26	818-0231-02	2	Rivet, Pop (3/16)
14	130-4833	1	Guard, Radiator (Unhoused Sets)	27	850-2008	4	Washer, Lock (M8)
15	130-3721-01	1	Cap, Radiator	28	502-0153	1	Plug, 1/4" Hex Head Pipe
				29	130-4958-02	1	Guard, Fan (RH)
				30	130-5116-02	1	Brace, Radiator
				31	130-5117-02	1	Brace, Radiator
				32	503-0977	1	Clamp

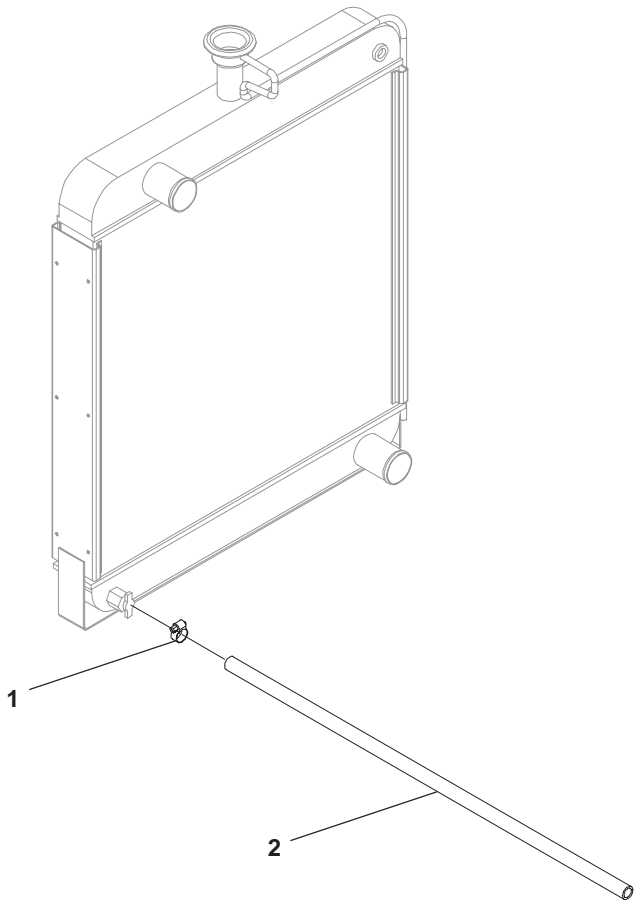
Duct Adapter



F013

REF NO.	PART NO.	QTY USED	PART DESCRIPTION	REF NO.	PART NO.	QTY USED	PART DESCRIPTION
1	130-4835	2	Adapter, Duct – Side	3	821-6003-02	4	Screw, Hex Head SEMS (M8 x 1.25 x 20)
2	130-4834	2	Adapter, Duct – Top and Bottom	4	818-0231-02	4	Rivet, Pop

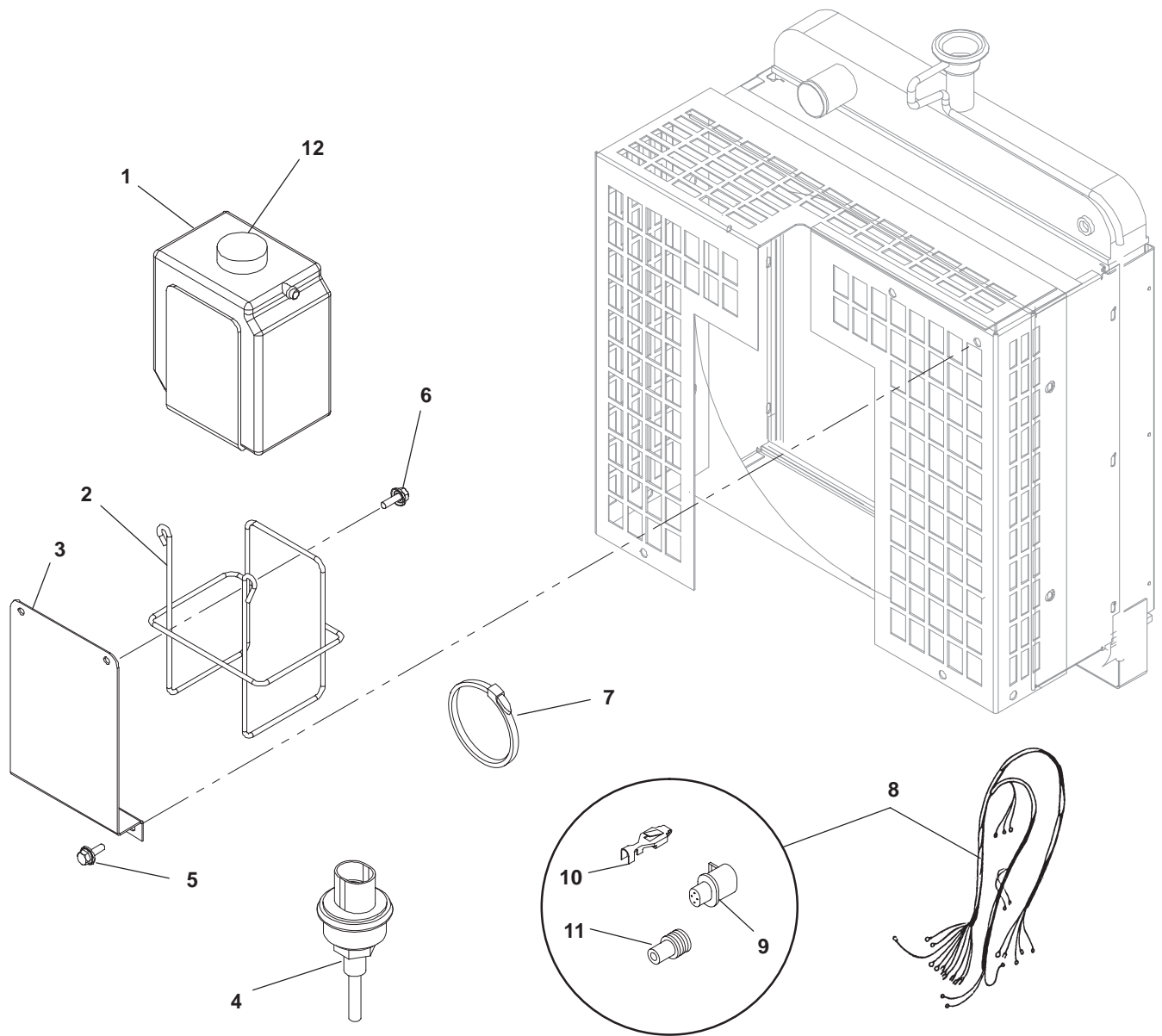
Radiator Drain



E089

REF NO.	PART NO.	QTY USED	PART DESCRIPTION	REF NO.	PART NO.	QTY USED	PART DESCRIPTION
1	503-0685	1	Clamp, Hose	2	503-1274	1	Hose, Radiator Drain (24")

Low Coolant Level Switch

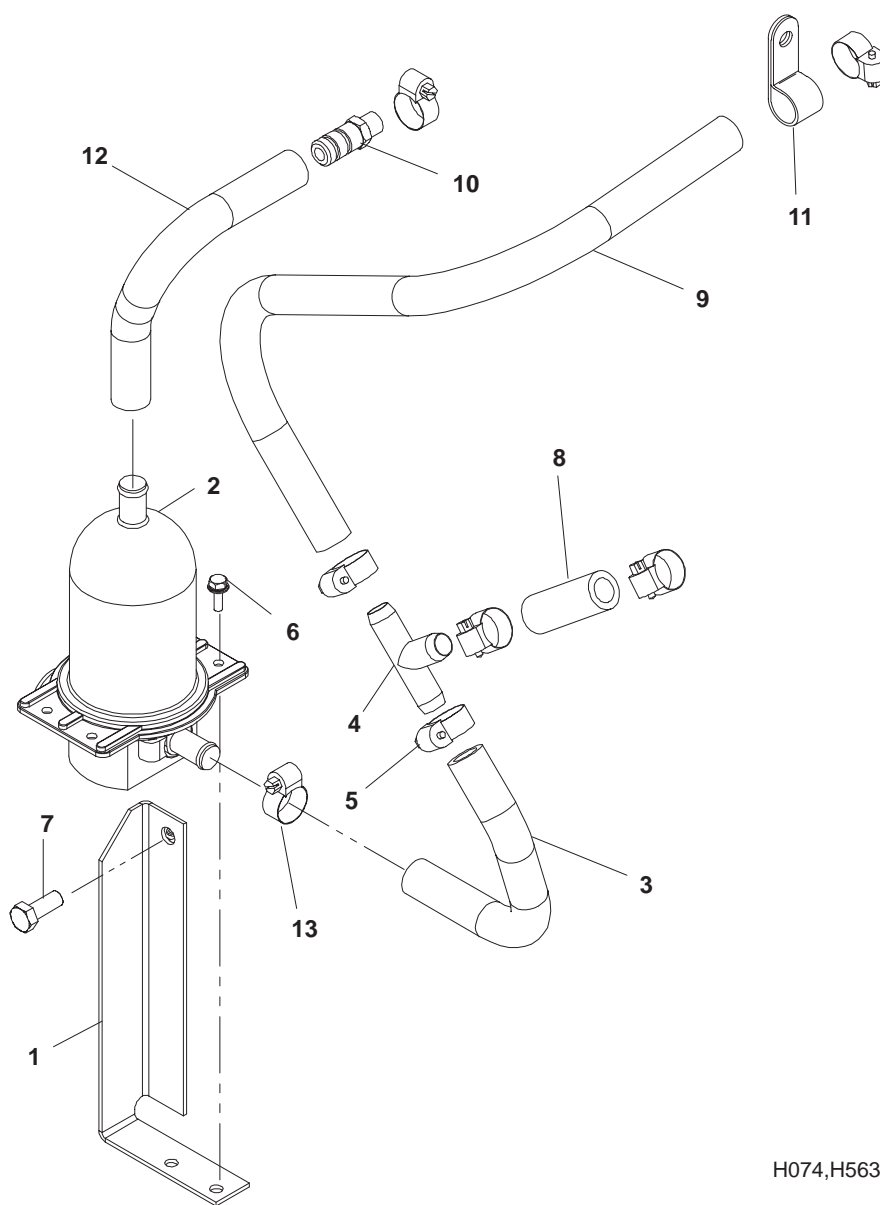


H389,H527

REF NO.	PART NO.	QTY USED	PART DESCRIPTION	REF NO.	PART NO.	QTY USED	PART DESCRIPTION
1	130-3570	1	Tank, Coolant	8	338-3594	1	Harness, Pigtail (Includes Parts Marked *)
2	130-3571	1	Hanger, Tank	9	323-1765	1	*Housing, Connector (4 Pin)
3	130-4846	1	Bracket, Coolant Tank	10	323-1709	4	*Socket, Contact
4	193-0468	1	Switch, Low Coolant Level (S7)	11	323-1708	4	*Seal, Cable
5	821-6003-03	2	Screw, Hex Head (M8 x 1.25 x 20)	12	130-3572	1	Cap, Tank
6	821-2034	2	Screw, Self-Locking – Flange Head (M6 x 1 x 20)				
7	332-1389	A/R	Tie, Cable				

* – Parts Included in 338-3594 Pigtail Harness

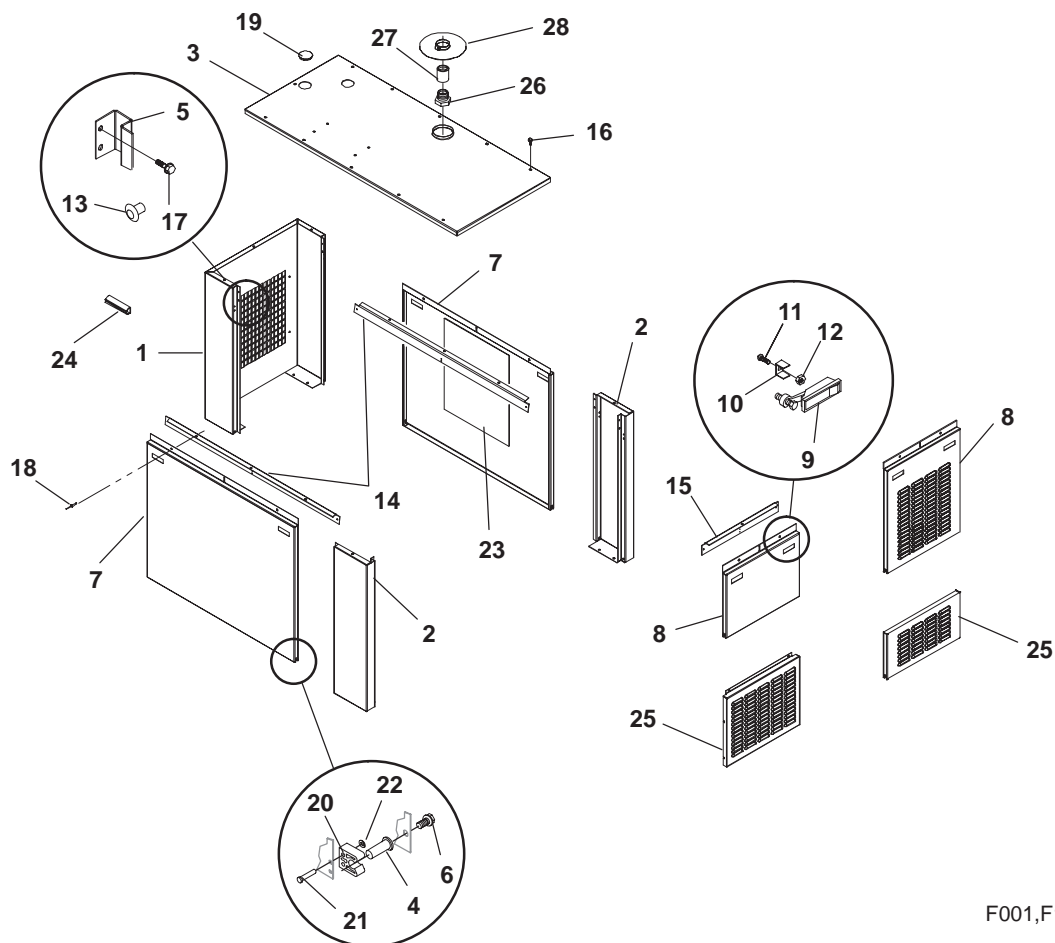
Coolant Heater



H074,H563

REF NO.	PART NO.	QTY USED	PART DESCRIPTION	REF NO.	PART NO.	QTY USED	PART DESCRIPTION
1	333-0624	1	Bracket, Heater	8	503-0832	1	Hose, Engine Coolant (.2' lg)
2	333-0588-01	1	Heater, Engine Coolant 120 Volt	9	503-0833	1	Hose, Engine Coolant (1.8' lg)
	333-0588-02	1	208/240 Volt	10	502-0613	1	Adapter, Hose
3	503-0832	1	Hose, Engine Coolant (.5' lg)	11	332-2634	1	Clamp, J
4	502-0870	1	Tee	12	503-0832	1	Hose, Engine Coolant (.6' lg)
5	503-0183	3	Clamp, Hose	13	503-0131	5	Clamp, Hose
6	821-6002-03	3	Screw, Hex Head (M6 x 1 x 16)				
7	821-2060	1	Screw, Self-Locking – Hex Washer Head (M10 x 20mm)				

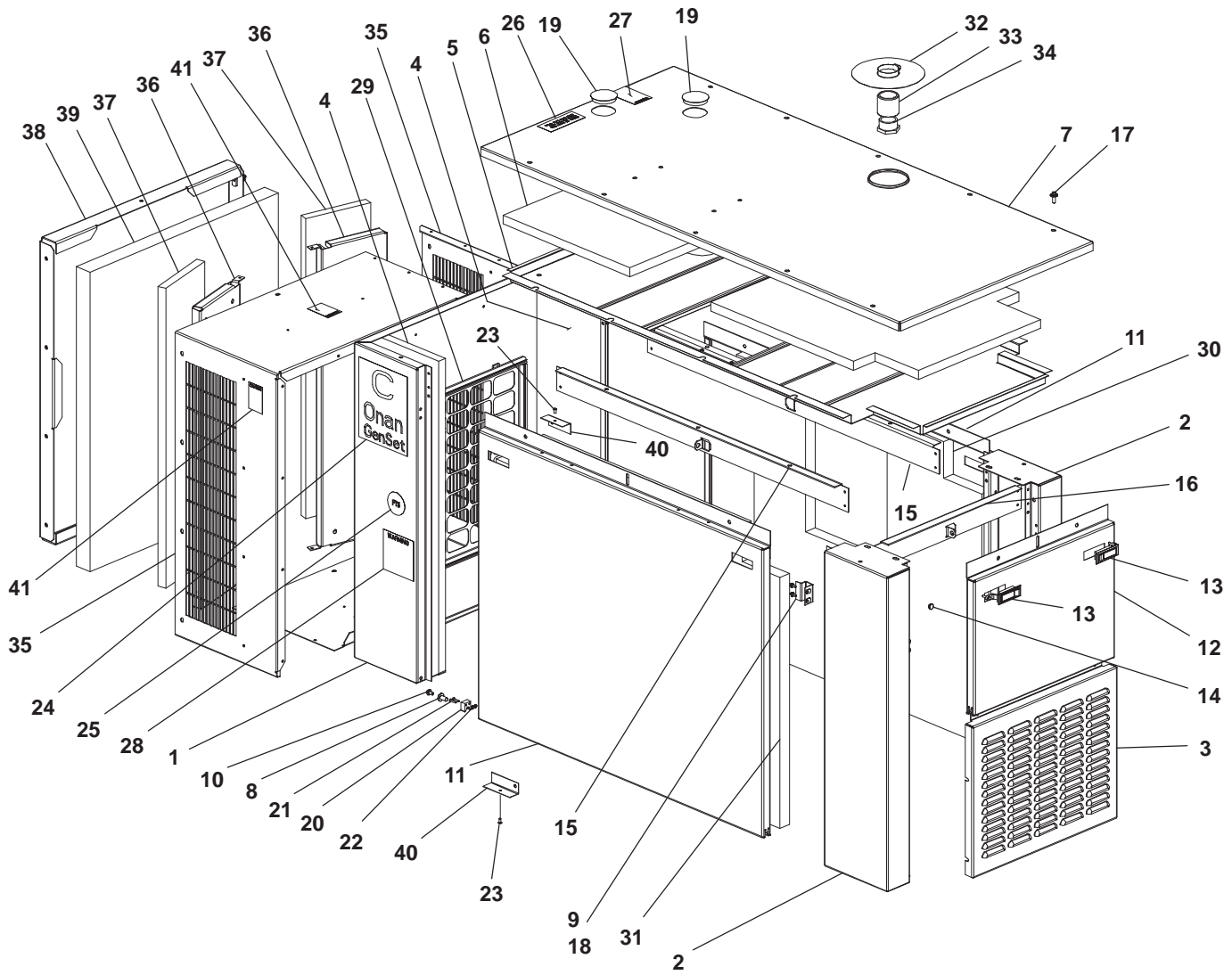
Housing Standard Weather Protective



F001,F184

REF NO.	PART NO.	QTY USED	PART DESCRIPTION	REF NO.	PART NO.	QTY USED	PART DESCRIPTION
1	405-6097	1	Panel, Front – Housing	16	821-6003-02	22	Screw, Hex Head (M8 x 1.25 x 20)
2	405-6167	2	Post, Corner	17	821-6001-02	12	Screw, Hex Head (M5 x .8 x 12)
3	405-6168	1	Roof, Housing	18	818-0231-02	12	Rivet, Pop
4	870-0258	6	Nut, Weld Stud	19	517-0138-09	2	Plug, Hole
5	405-6164	6	Catch, Housing Door	20	405-1872	6	Clip, Door
6	821-0010	6	Screw, Lock Head (1/4-20 x 1/2)	21	818-0150	12	Rivet, Drive
7	405-6162	2	Door, Housing (Side)	22	526-0003	12	Washer, Flat (3/16)
8			Door, Housing (Rear)	23	128-0154-02	1	Insulation, Foam
	405-6163	1	Spec A, B	24	895-0387	4	Seal, Weather (18.5")
	405-6300-02	1	Spec C	25			Panel, Housing
9	406-0615	6	Latch, Door		405-6202	1	Spec A, B
10	406-0614	6	Bracket, Door		405-6299-02	1	Spec C
11	812-0084	6	Screw, Machine – Round Head (8-32 x 1)	26	505-0025	1	Bushing, Reducer (1-1/2 x 1-1/4)
12	870-0221	6	Nut (8-32)	27	505-0032	1	Coupling, Pipe (1-1/2)
13	405-4932	6	Bumper, Housing	28	405-1889	1	Shield, Rain
14	405-6169	2	Bracket, Housing				
15	405-6170	1	Bracket, Housing				

Housing Quiet Site Second Stage Spec B, C

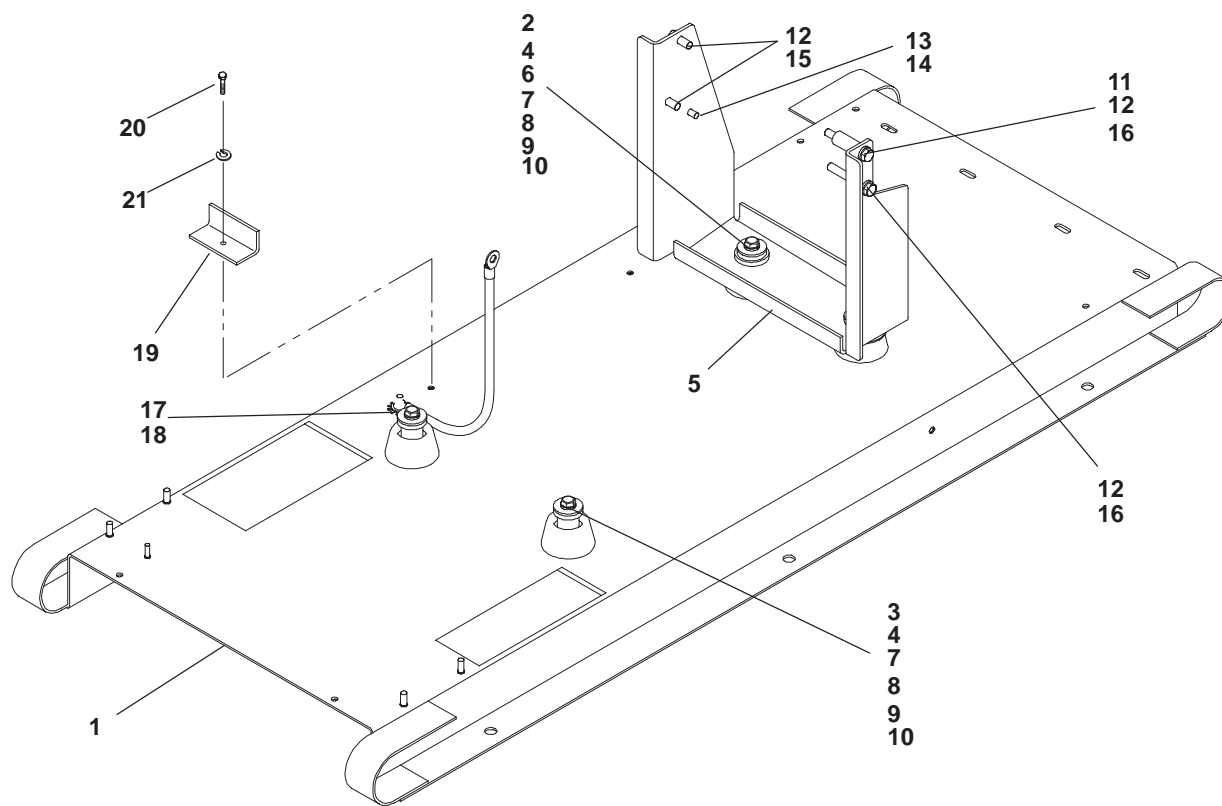


F173

Housing
Quiet Site Second Stage
Spec B, C

REF NO.	PART NO.	QTY USED	PART DESCRIPTION	REF NO.	PART NO.	QTY USED	PART DESCRIPTION
1	405-6097	1	Panel, Front – Housing	20	405-1872	6	Clip, Door
2	405-6167	2	Post, Corner	21	818-0150	12	Rivet, Drive (5/32)
3	405-6299-02	1	Panel, Housing	22	526-0003	12	Washer, Flat (3/16)
4	405-6195	2	Panel, Insulation	23	818-0231-02	58	Rivet, Pop
5	405-6201-02	1	Support, Insulation	24	098-6139-05	2	Label, Model Identification
6	405-6199	1	Panel, Insulation	25	098-4500	2	Label, Prototype
7	405-6168	1	Roof, Housing	26	098-5429	1	Label, Coolant Fill
8	870-0258	6	Nut, Weld	27	098-4730	1	Label, Warning
9	405-6164	6	Catch, Housing Door	28	098-4732	2	Label, Warning
10	821-0010	6	Screw, Self-Locking – Hex Washer Head (1/4-20 x .50)	29	895-0387	4	Seal, Weather
11	405-6162	2	Door, Housing	30	405-6196	1	Panel, Insulation
12	405-6300-02	1	Door, Housing	31	405-6197	1	Panel, Insulation
13	406-0561	6	Latch, Door	32	405-1889	1	Shield, Rain
14	405-4932	6	Bumper, Housing	33	505-0032	1	Coupling, Pipe
15	405-6169	2	Bracket, Housing	34	505-0025	1	Bushing, Reducer (1-1/4 x 1-1/2)
16	405-6170	1	Bracket, Housing	35	405-6229-02	2	Duct, Air Outlet
17	821-6003-02	32	Screw, Hex Head (M8 x 1.25 x 20)	36	405-6231-02	2	Duct, Air Outlet
18	821-6001-02	12	Screw, Hex Head (M5 x 0.8 x 12)	37	405-6236	2	Panel, Insulation
19	517-0138-09	2	Plug, Hole	38	405-6228-02	1	Duct, Air Outlet
				39	405-6235	1	Panel, Insulation
				40	405-6200-02	12	Support, Insulation
				41	098-7451	3	Label, Caution

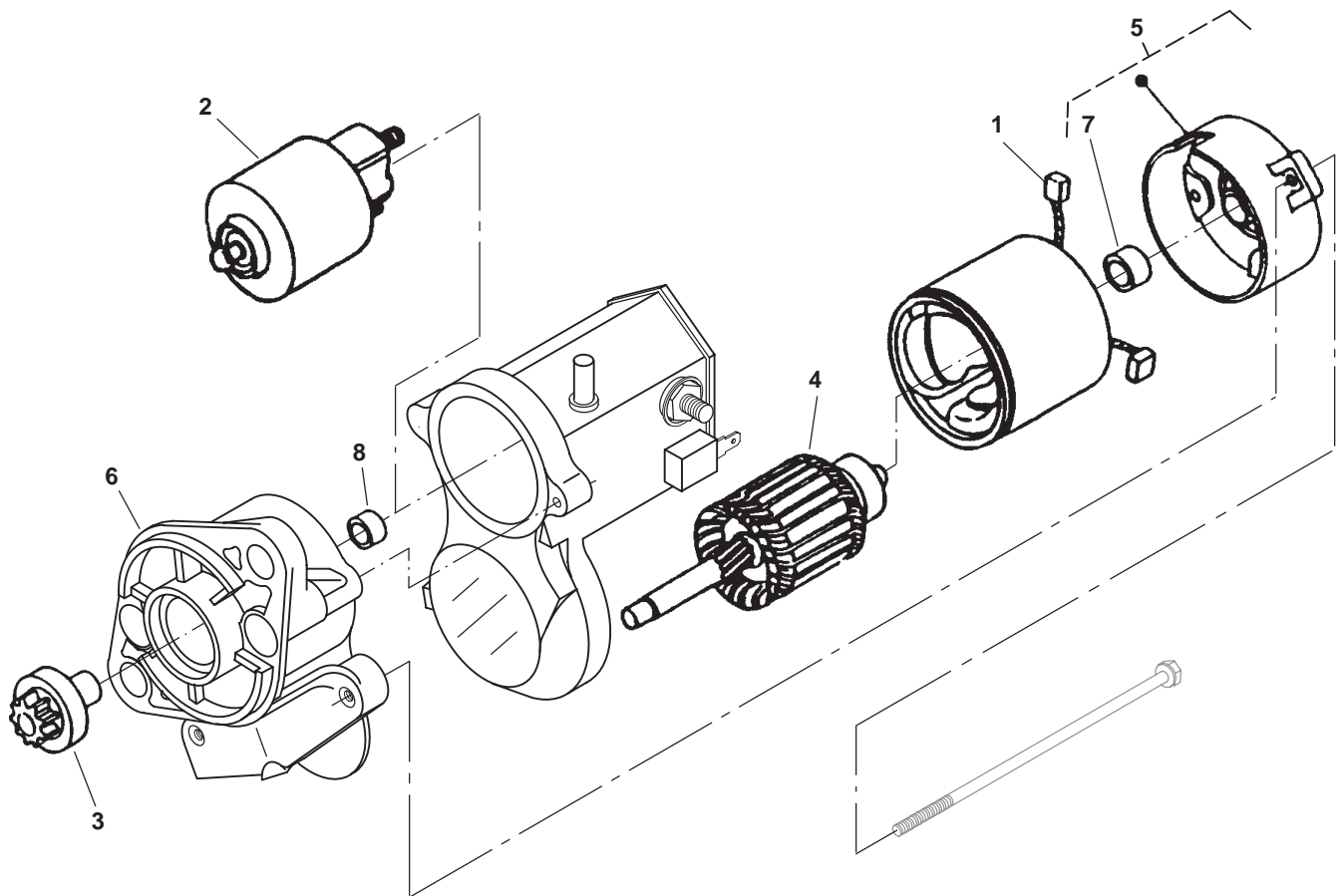
Skid



F179,C002,C099,C053,C065,C090

REF NO.	PART NO.	QTY USED	PART DESCRIPTION	REF NO.	PART NO.	QTY USED	PART DESCRIPTION
1	403-4254	1	Base, Skid	11	403-3795	1	Spacer, Engine Support
2	402-0285	2	Cushion, Vibration Isolation (Engine End) (2-3/4 x 2-11/32)	12	526-0174	4	Washer, Flat (3/8)
3	402-0286	2	Cushion, Vibration Isolation (Generator End) (2-3/4 x 2-11/32)	13	526-0122	1	Washer, Flat (5/16)
4	402-0290	4	Bushing, Spacer	14	800-2057	1	Screw, Cap – Hex Head (M8 x 1.25 x 20)
5	403-4255	1	Bracket, Front – Engine Mounting	15	800-2086	2	Screw, Cap – Hex Head (M10 x 1.5 x 25.4)
6	403-1830	2	Spacer	16	800-2095	2	Screw, Cap – Hex Head (M10 x 1.5 x 70)
7	402-0282	4	Cushion, Mounting – Rubber (1-1/2 x 1/4)	17	856-0009	2	Washer, Lock – EIT (5/16)
8	526-0014	4	Washer, Flat (7/16)	18	870-0257	1	Nut, Lock (5/16-18)
9	850-0055	4	Washer, Lock (7/16)	19	416-0961	2	Battery, Hold Down
10	800-0081	4	Screw, Cap – Hex Head (7/16-14 x 3.5)	20	800-2040	2	Screw, Cap – Hex Head (M6 x 1 x 50)
				21	850-2056	2	Washer, Lock (M6)

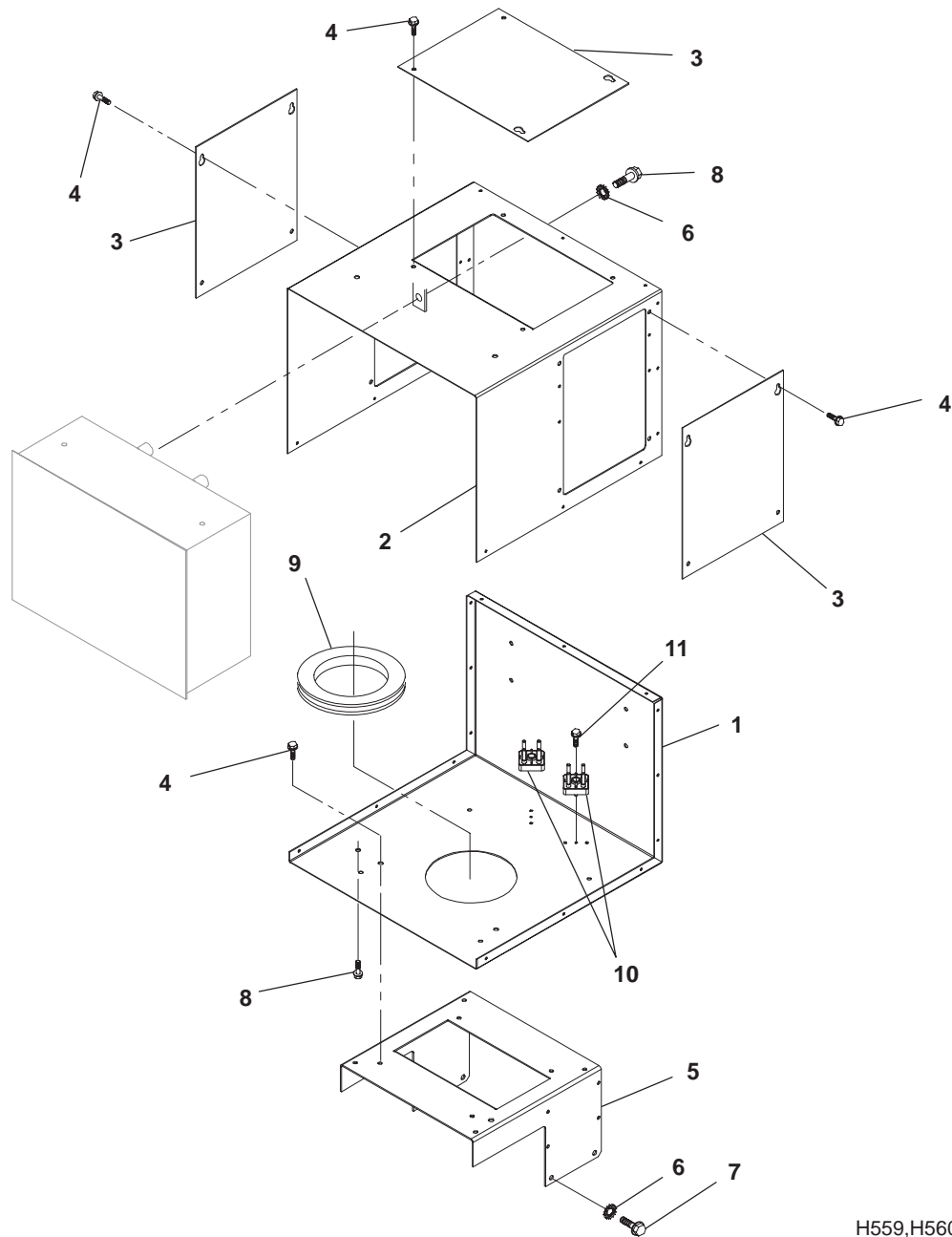
Starter



CP01

REF NO.	PART NO.	QTY USED	PART DESCRIPTION	REF NO.	PART NO.	QTY USED	PART DESCRIPTION
	191-2213	1	Starter – Complete (1.4kW) (B1)	5	191-2219	1	Frame, Commutator End
1	191-2215	1	Kit, Starter Brush	6	191-2220	1	Housing
2	191-2216	1	Switch	7	191-2221	1	Bearing, Commutator End
3	191-2217	1	Clutch	8	191-2222	1	Bearing, Pinion End
4	191-2218	1	Armature				

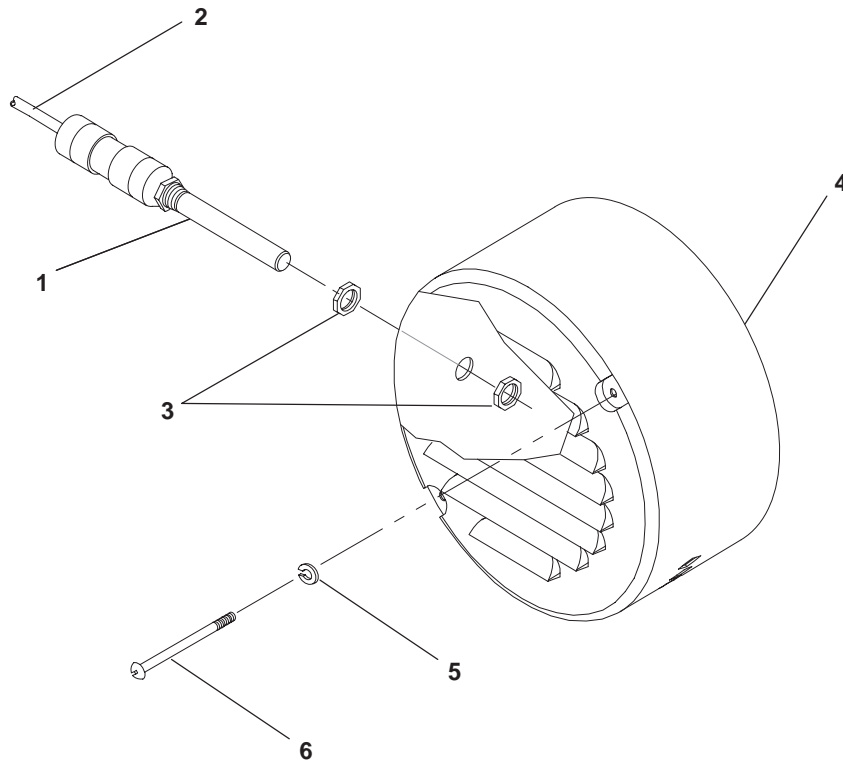
Control Housing Detector Control



H559,H560

REF NO.	PART NO.	QTY USED	PART DESCRIPTION	REF NO.	PART NO.	QTY USED	PART DESCRIPTION
1	319-3313	1	Panel, Control Housing	6	856-0008	6	Washer – EIT (5/16)
2	319-3312	1	Panel, Control Housing Top	7	815-0236	4	Screw, Thread Cutting (5/16-18 x 5/8)
3	319-3316	2	Sets W/Circuit Breaker	8	821-0014	4	Screw, Locking (5/16-18 x 1/2)
	319-3316	3	Sets W/O Circuit Breaker	9	508-0305-02	–	Edging – Bulk (Order By The Foot – 1 Foot Required)
4			Screw, Hex Head (M6 x 1 x 16)	10	332-3249	2	Block, Terminal
	821-6002-03	24	Sets W/Circuit Breaker	11	821-6001-03	2	Screw, Hex Head (M5 x 0.8 x 16)
	821-6002-03	28	Sets W/O Circuit Breaker				
5	405-6098	1	Bracket, Control Saddle				

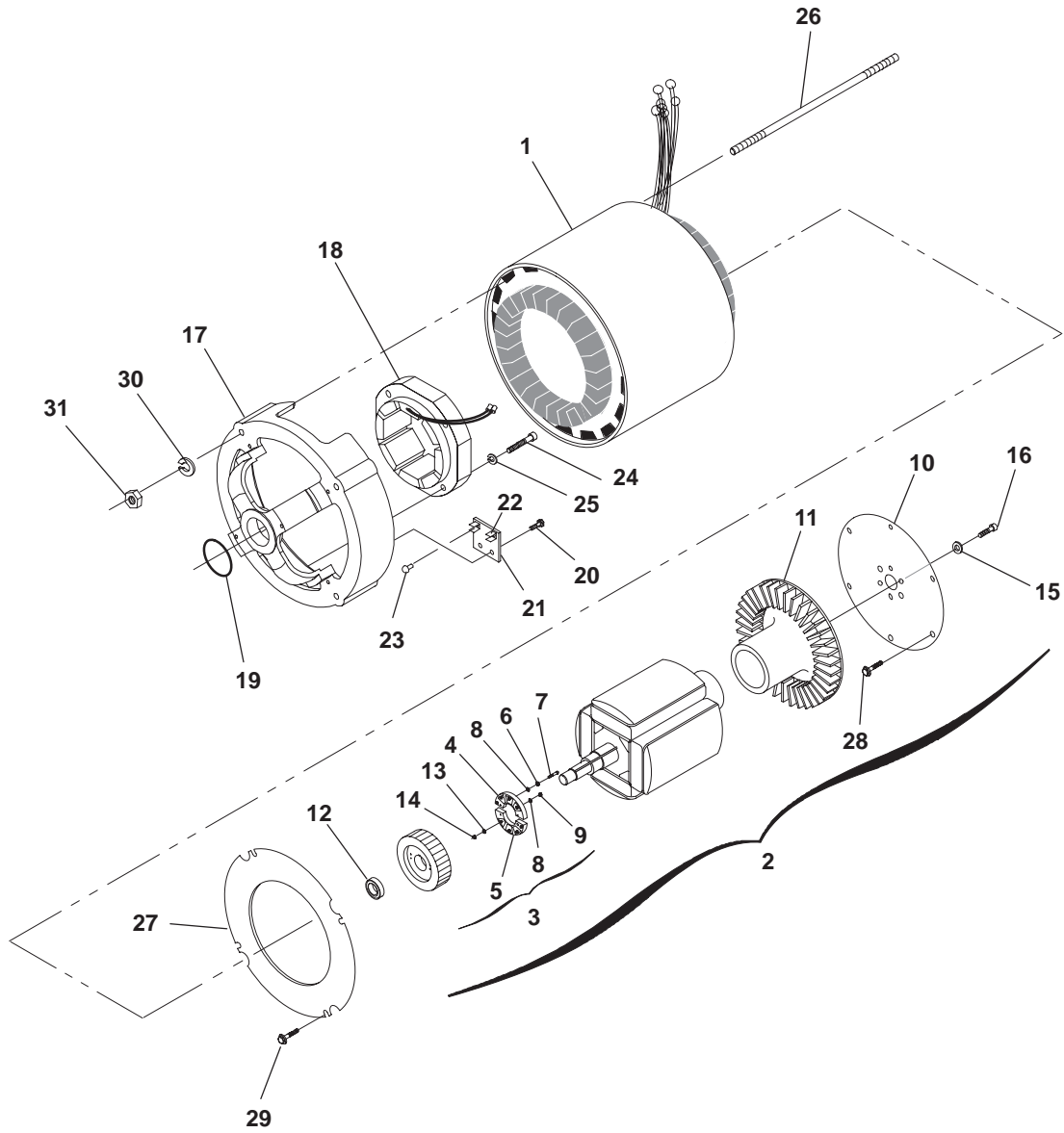
Generator Heater



A222

REF NO.	PART NO.	QTY USED	PART DESCRIPTION	REF NO.	PART NO.	QTY USED	PART DESCRIPTION
1	333-0184	1	Heater, Generator (Includes Heater Cord)	5	850-0040	2	Washer, Lock – Split (1/4)
2	333-0228	1	Cord, Heater	6	812-0167	2	Screw, Round Head (1/4-20 x 6")
3	331-0041	2	Nut, Lock (1/2)				
4			Cover, End Bell				
	234-0993	1	Sets With Generator Heater				
	234-0498	1	Sets Without Generator Heater				

Generator

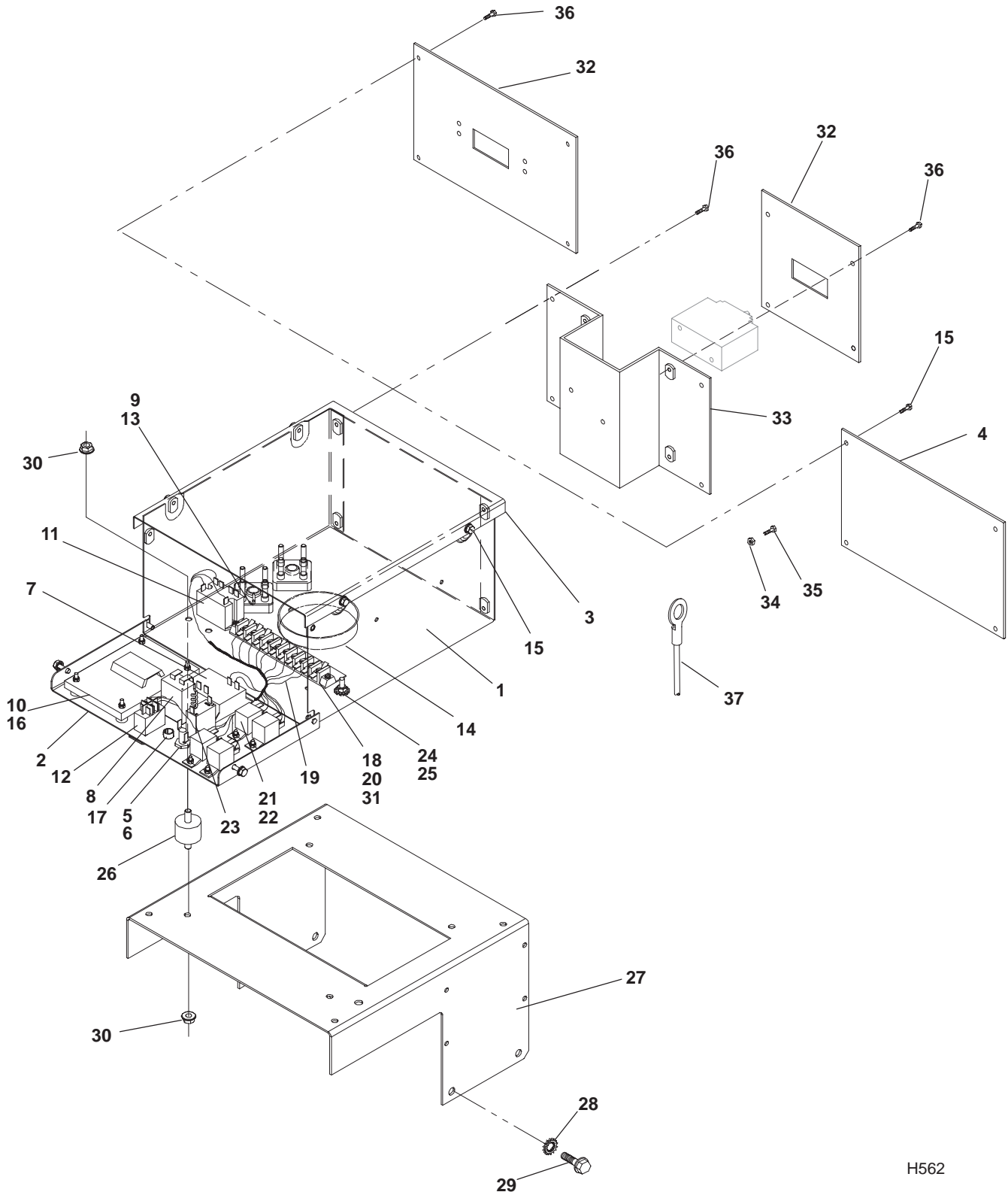


B274,B346,B256,B328,B340,B268,B304

Generator

REF NO.	PART NO.	QTY USED	PART DESCRIPTION	REF NO.	PART NO.	QTY USED	PART DESCRIPTION
1			Stator, Generator	17	211-0256-02	1	Bell, End
	220-4564-06	1	4 Lead	18	220-2009	1	Stator, Exciter
	220-4565-06	1	6 Lead	19	509-0094	1	Seal, O-Ring
	220-4563-06	1	12 Lead	20	815-0194	2	Screw, Hex Head – Thread Cutting – W/ET (#10-32 x 3/8)
	220-4563-07	1	12 Lead, Full Output on Single Phase				
2			Rotor Assembly, Generator (Includes parts marked *)	21	232-2417	1	Board, Connection
	201-3573-06	1	149mm Stack Length	22	332-1355	2	Terminal, Tab
	201-3573-07	1	181mm Stack Length	23	818-0006	2	Rivet
3	201-2151	1	* Rotor Assembly, Exciter (Includes Parts Marked #)	24	802-0038	4	Screw, Cap – Socket Head (1/4-20 x 1.5)
4	358-0069	1	*# Rectifier Assembly – Positive	25	850-0040	4	Washer, Lock (1/4)
5	358-0070	1	*# Rectifier Assembly – Negative	26			Stud
6	853-0008	4	*# Washer, Lock – ET (#10)		520-0799	4	149mm Stack Length
7	813-0100	4	*# Screw, Round Head – Machined (#10-32 UNF x 1/2)		520-0800	4	181mm Stack Length
8	526-0008	10	*# Washer, Flat (#10)	27	234-0519	1	Baffle, Air
9	870-0131	6	*# Nut, Hex – W/ET (#10-32)	28	805-0015	6	Bolt, Place (.38-16 UNC x .75)
10	232-2826	A/R	* Disk, Rotor Drive	29	821-0010	4	Screw, Lock (.25-20 UNC x .50)
11	205-0258	1	* Fan, Generator	30	850-0050	4	Washer, Lock (.38)
12	510-0112	1	* Bearing, Ball	31	862-0011	4	Nut, Hex (.38-16)
13	526-0399-11	2	* Washer, Flat (#10)				
14	870-0131-01	2	* Nut, Hex – W/ET (#10)	*	Parts Included in Generator Rotor Assembly		
15	526-0399-42	6	* Washer, Flat (.38 Hardened)	#	Parts Included in Exciter Rotor Assembly		
16	800-0519	6	* Screw, Cap – Hex Head (.375-16 x .75) (Special)				

Sentinel Control

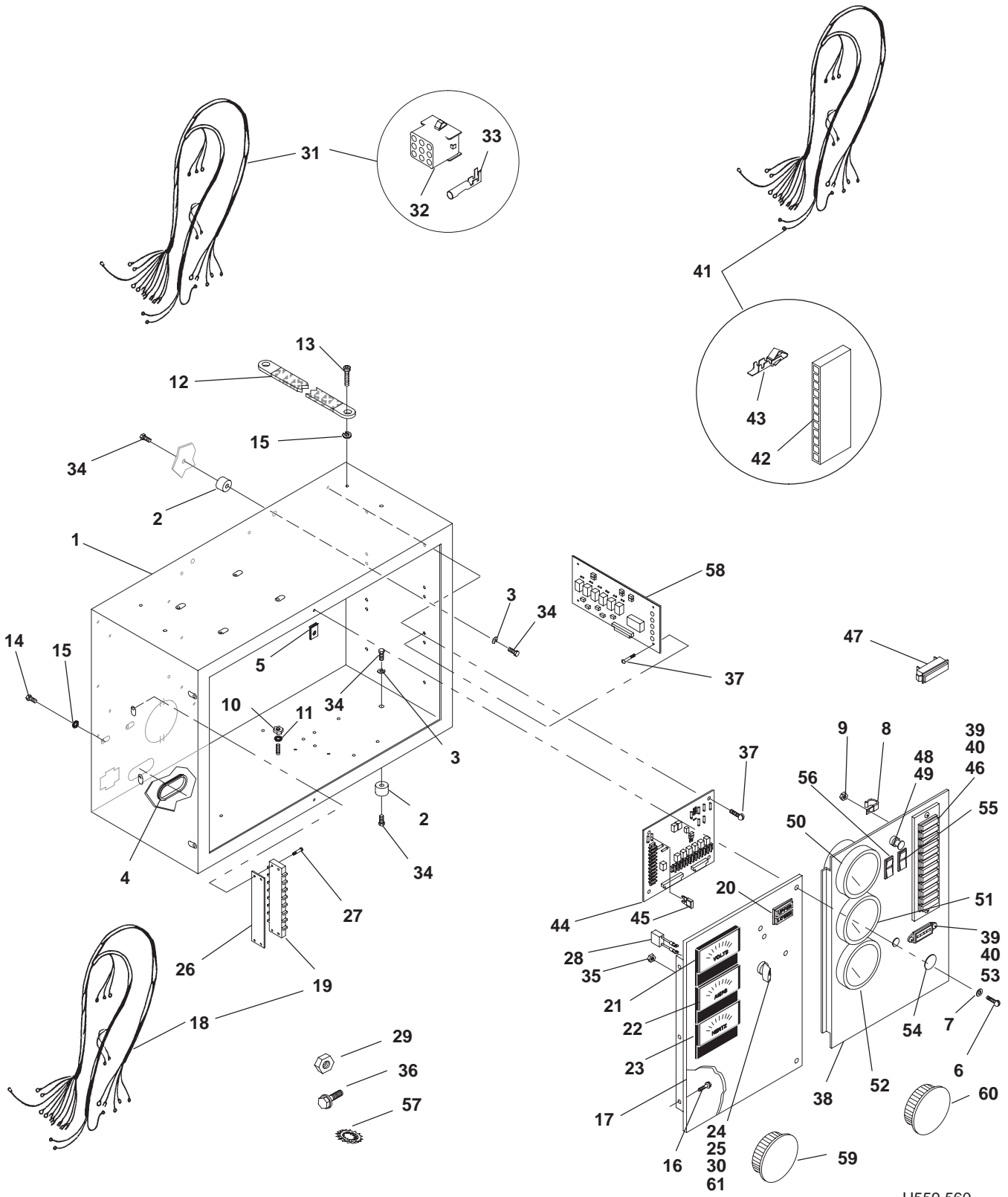


H562

Sentinel Control

REF NO.	PART NO.	QTY USED	PART DESCRIPTION	REF NO.	PART NO.	QTY USED	PART DESCRIPTION
1	319-3321	1	Box, Control	30	870-2054	8	Nut, Locking – Hex Flange Head (M6)
2	319-3322	1	Panel, Control – Front	31	332-3573	1	Strip, Marker
3	319-3326	1	Cover, Control	32			Cover, Circuit Breaker
4	319-3324	1	Plate, Control – Sets Without Circuit Breaker		319-3325-01	1	Used With 2 Pole Circuit Breaker
5	321-0175	1	Holder, Fuse		319-3339	1	Used With 3 Pole Circuit Breaker – Spec A
6	321-0353	1	Fuse (20 Amp)		319-3824-01	1	Used With 3 Pole Circuit Breaker – 480V – Spec B, C
7	307-2871	1	Relay, Timer		319-3647	1	Used With 3 Pole Circuit Breaker – 600V – Spec B, C
8	302-2002	1	Meter, Hour				
9	332-3249	2	Block, Terminal				
10	305-0982	1	Regulator, Voltage (VR21)				
11	307-2677-03	1	Relay (20 Amp) (K21)				
12	308-1011	1	Switch, Rocker				
13	821-6001-03	2	Screw, Hex Head (M5 x 0.8 x 16)	33			Bracket, Mounting – Circuit Breaker – Used With 3 Pole Circuit Breaker
14	508-1127	1	Bushing, Nylon		319-3338	1	Spec A
15	821-6002-03	10	Screw, Hex Head (M6 x 1 x 16)		319-3823-01	1	480V – Spec B, C
16	870-2064-01	12	Nut, Lock – Nylon (M4)		319-3646	1	600V – Spec B, C
17	517-0133	1	Plug, Hole	34	870-2064-01	4	Nut, Lock (M4) – Used With 2 Pole Circuit Breaker
18	815-0925-01	4	Screw, Slotted – Flat Head – Thread Forming (M4 x 0.7 x 20)	35	800-3042	4	Screw, Hex Head (M4 x 0.7 x 10) – Used With 2 Pole Circuit Breaker
19			Harness, Control	36			Screw, Hex Head (M6 x 1 x 16)
	338-3680	1	Spec A (Includes Parts Marked *)		821-6002-03	4	Used With 2 Pole Circuit Breaker
	338-3733	1	Spec B, C (Includes Parts Marked #)		821-6002-03	8	Used With 3 Pole Circuit Breaker
20	332-3564	1	*# Block, Terminal (TB1)	37			Lead
21	357-0030	1	*# Rectifier (6 Amp) (CR4) (Mounted on K11 Relay)		226-4778-01	2	Used With 2 Pole Circuit Breaker
22	307-2817-01	4	*# Relay (K11-K14)		226-4778-01	3	Used With 40-100 Amp Circuit Breaker
23			Breaker, Circuit		226-4778-03	3	Used With 15-30 Amp Circuit Breaker
	320-1941	1	2 Pin				
	320-1824-02	1	4 Pin				
24	860-2057	5	Nut, Hex (M6)				
25	856-0006	5	Washer, Lock – EIT (1/4")				
26	402-0669	4	Isolator, Vibration				
27	405-6098	1	Bracket, Control Saddle				
28	856-0008	4	Washer, Lock – EIT (5/16")	*	Parts Included in 338-3680 Control Harness		
29	815-0236	4	Screw, Cap – Hex Head – Thread Forming (5/16-18 x 5/8")	#	Parts Included in 338-3733 Control Harness		

Detector Control

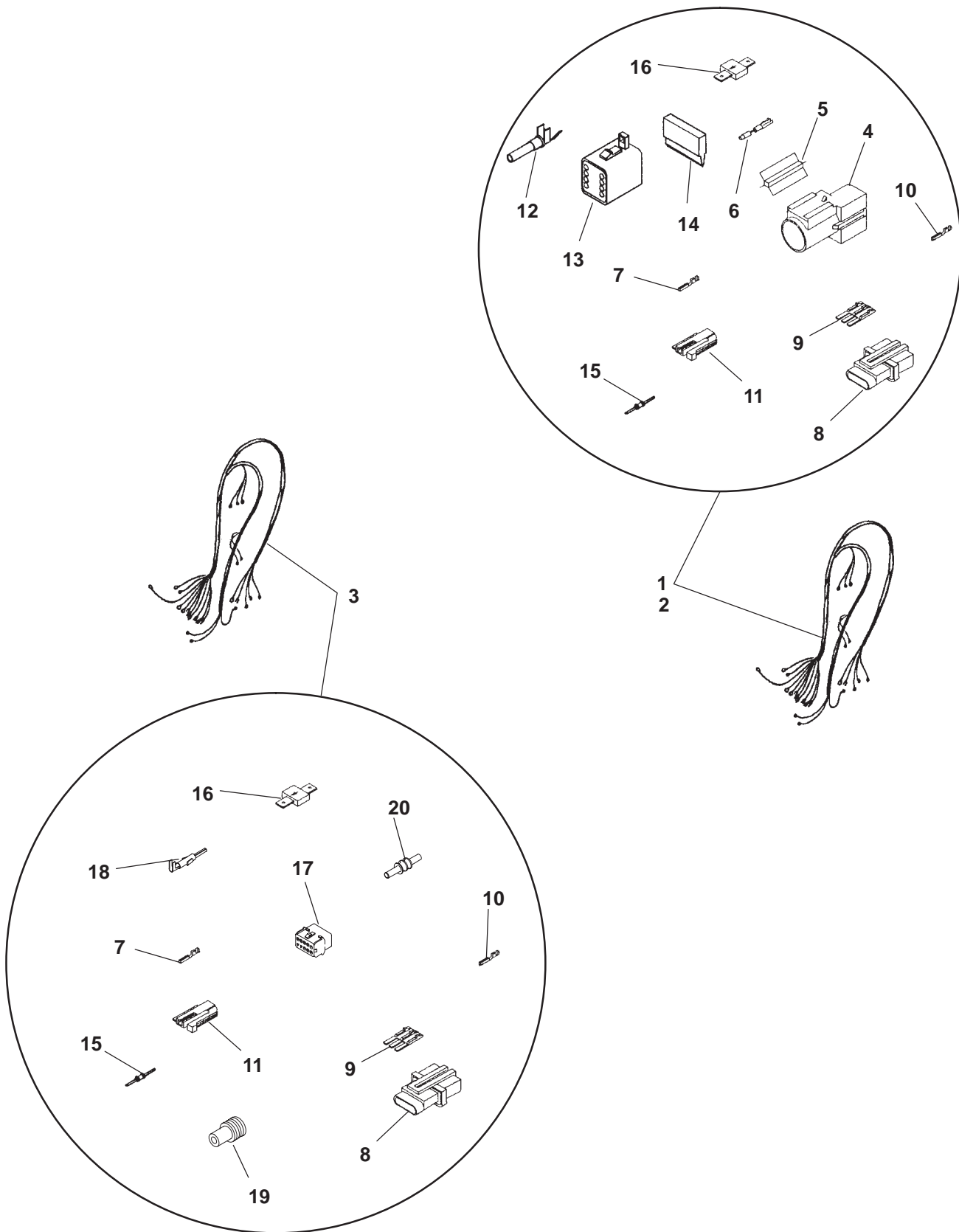


H559,560

Detector Control

REF NO.	PART NO.	QTY USED	PART DESCRIPTION	REF NO.	PART NO.	QTY USED	PART DESCRIPTION
1	319-3030	1	Box, Control	35	870-1220	6	Nut, Hex (#4-40)
2	402-0527	4	Isolator, Vibration	36	821-5000-05	1	Screw, Self-Locking – Hex Washer Head (#10-32 x 1/2")
3	850-0045	4	Washer, Lock – Spring (5/16)	37	815-0388	8	Screw, Pan Head (Cross Recessed (#6-32 x 1/2"))
4	508-0051	1	Grommet (Fits 2" Hole)	38	301-9055-01	1	Door, Control – DC
5	406-0332	2	Receptacle, Fastener	39	815-0385	4	Screw, Machine – Round Head (#6-32 x 1/2")
6	406-0333	2	Stud, Fastener	40	870-0183	4	Nut, Hex – W/ET (#6-32)
7	406-0334	2	Washer, Stud Retainer	41	338-3252	1	Harness, Wiring – DC Control Door (Includes Connector Housing and Contact Pins) (22 Wire, 32") (A11J4 to GND, M11,12,13,14, S11,12, DS11)
8	332-0052	2	Clip, Wire	42	323-1308	1	Housing, Connector (J4)
9	870-0131	1	Nut, Hex – W/ET (#10-32)	43	323-1302	11	Pin, Contact
10	871-0015	1	Nut, Hex (1/4-20)	44	300-4296	1	Board Assembly, Printed Circuit – Engine Monitor (Includes Fuses) (A11)
11	526-0018	1	Washer, Flat (1/4")	45			Fuse
12	337-0049	1	Strap, Ground		321-0307-03	2	5 Amp (Tan) (F4, F5)
13	800-0024	1	Screw, Cap – Hex Head (5/16-18 x 1/2")		321-0307-06	1	15 Amp (Light Blue) (F3)
14	815-0905-08	1	Screw, Pan Head – Cross Recessed (#10-32 x 7/8")		321-0307-07	2	20 Amp (Yellow) (F1, F2)
15	856-0008	2	Washer, Lock – EIT (5/16")	46	322-0360-01	1	Light Assembly, Indicator (Includes Wiring Harness and Connector Housing) (A12)
16	821-0004	3	Screw, Self-Locking – Hex Washer Head (#10-32 x 5/16")	47	322-0369-01	1	Light, Indicator – Replacement
17	301-9054-01	1	Door, Control – AC	48	322-0361	1	Light, Panel (DS11)
18	338-2278	1	Harness, Wiring – AC Control Door (Includes Terminal Block) (19 Wire, 26") (TB21, GND to GND, M21,22,23, S21, DS21,22)	49	322-0004	1	Bulb, Panel Light – Replacement
19	332-0607	1	Block, Terminal (12 Place) (TB21)	50	193-0466	1	Gauge, Oil Pressure (M11)
20	322-0363	1	Light, Indicator – Upper/Lower Scale (DS21,22)	51	193-0351	1	Gauge, Water Temperature (M12)
21			Voltmeter, AC (M21)	52	302-1641	1	Voltmeter, DC (M13)
	302-1148	1	0-300/600	53	302-2002	1	Meter, Hour (M14)
	302-1753	1	0-0750	54	517-0131	1	Plug, Hole (Fits 7/8" Hole)
22	302-1473		Ammeter AC (M22)	55	308-1010	1	Switch, Rocker – Lamp Test/Reset Panel Lamp (S11)
23	302-1968	1	Meter, Frequency (M23)	56	308-1011	1	Switch, Rocker – Run/Stop/Remote (S12)
24	853-0008	1	Washer, Lock – ET (#10)	57	853-0008	1	Washer, Lock – ET (#10)
25	308-1052	1	Switch, Rotary – Voltmeter/Ammeter (Includes Handle) (S21)	58	300-5098	1	Board, Printed Circuit – Sensor Board (A27)
26	332-2723	1	Strip, Marker	59	517-0302	1	Plug, Hole (Fits 2-1/4" Hole) (Quantity Used As Required)
27	815-0901-06	2	Screw, Cross Recessed – Thread Forming (#6-32 x 5/8")	60	517-0301	1	Plug, Hole (Fits 2" Hole) (Quantity Used As Required)
28	355-0189	1	Capacitor – Voltmeter (.1 Mfd., 500 WVDC) (C21)	61	308-1082	1	Handle, Rotary Switch
29	870-0183	2	Nut, Hex – W/ET (#6-32)				
30	815-0875-02	3	Screw, Machine – Round Head (M4 x 8mm)				
31	338-3429	1	Harness, Wiring – Terminal Block (9 Wire, 11") (Includes Connector Plug and Sockets) (P2 to TB21)				
32	323-1644-02	1	Plug, Connector (P2)				
33	323-1648	9	Socket, Contact				
34	800-0045	4	Screw, Cap – Hex Head (5/16-18 x 3/8")				

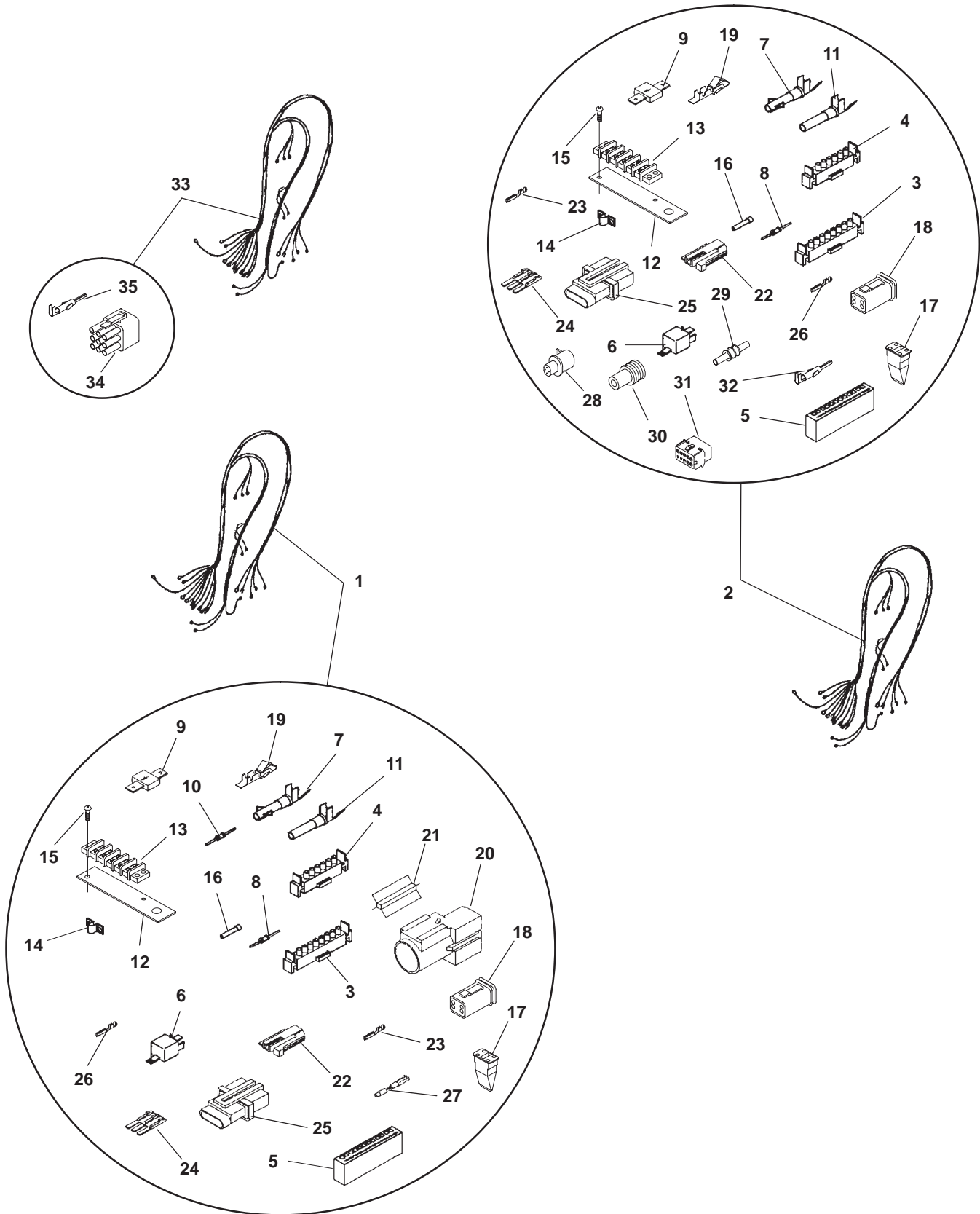
Wiring Harness Generator Sets With Sentinel Control



Wiring Harness Generator Sets With Sentinel Control

REF NO.	PART NO.	QTY USED	PART DESCRIPTION	REF NO.	PART NO.	QTY USED	PART DESCRIPTION
1	338-3669	1	Harness, Wiring – Engine to Control (Includes Parts Marked *) – Spec A	13	323-1541	1	^* Plug, Connector – 8 Place (P2)
2	338-3734	1	Harness, Wiring – Engine to Control (Includes Parts Marked ^) – Spec B	14	323-1543	1	^* Wedge, Plug (Used in P2)
3	338-3795	1	Harness, Wiring – Engine to Control (Includes Parts Marked +) – Spec C	15	350-0980	1	+^* Resistor (510 Ohms) (Located in Harness Sleeving at P7 and P8 End)
4	166-0860	1	^* Connector – 2 Place (P8)	16	357-0030	1	+^ Rectifier, Silicon (6 Amp) (CR5)
5	166-0849	1	^* Wedge, Connector (Used in P8)	17	323-1710	1	+ Connector – 10 Pin (P8)
6	166-0850	2	^* Socket, Contact (Used in P8)	18	323-1707	6	+ Socket, Contact (Used in P8)
7	191-2177	1	+^* Socket, Contact (Used in P7)	19	323-1708	6	+ Seal (P8)
8	191-2178	1	+^* Connector – 3 Place (P6)	20	323-1712	4	+ Seal, Plug (P8)
9	191-2179	1	+^* Wedge, Connector (Used in P6)				
10	191-2181	3	+^* Socket, Contact (Used in P6)				
11	191-2176	1	+^* Connector – One Place (P7)				
12	323-1492	6	^* Socket, Contact (Used in P2)				
				*	Parts Included in 338-3669 Engine to Control Wiring Harness		
				^	Parts Included in 338-3734 Engine to Control Wiring Harness		
				+	Parts Included in 338-3795 Engine to Control Wiring Harness		

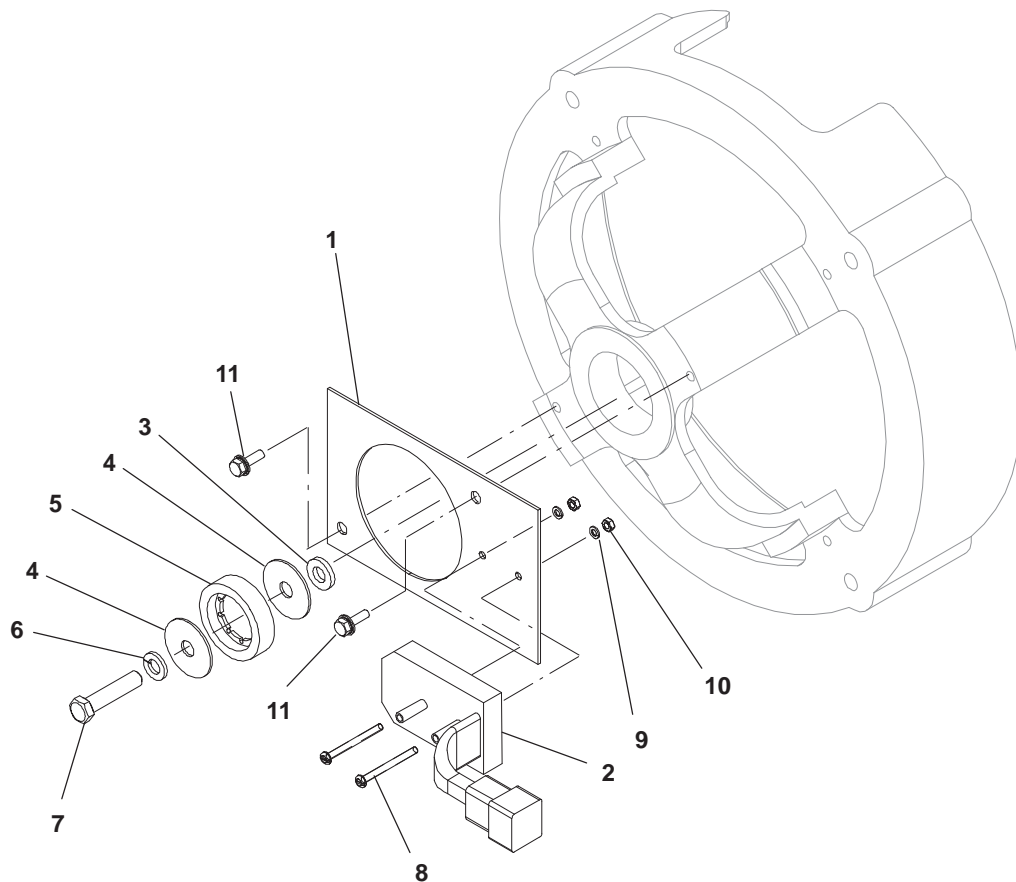
Wiring Harness **Generator Sets With Detector Control**



Wiring Harness Generator Sets With Detector Control

REF NO.	PART NO.	QTY USED	PART DESCRIPTION	REF NO.	PART NO.	QTY USED	PART DESCRIPTION
1	338-3670	1	Harness, Wiring – Engine to Control (Includes Parts Marked +) – Spec A, B	18	323-1546	1	*+ Plug (Used in E1)
2	338-3796	1	Harness, Wiring – Engine to Control (Includes Parts Marked *) – Spec C	19	323-1302	11	*+ Pin, Contact (Used in J3)
3	323-1306	1	*+ Housing, Connector – 8 Place (J1)	20	166-0860	1	+ Connector – 2 Place (P8)
4	323-1304	1	*+ Housing, Connector – 6 Place (J2)	21	166-0849	1	+ Wedge, Connector (Used in P8)
5	323-1374-12	1	*+ Housing, Connector – 12 Place (J3)	22	191-2176	1	*+ Connector – 1 Place (P7)
6	307-2817-01	1	*+ Relay (K4)	23	191-2181	3	*+ Socket, Contact (Used in P6)
7	323-1200	12	*+ Socket, Contact (Used in J1,J2)	24	191-2179	1	*+ Wedge, Connector (Used in P6)
8	350-0980	1	*+ Resistor (510 Ohms) (Located in Harness Sleeving at P7 and P8 End)	25	191-2178	1	*+ Connector – 3 Place (P6)
9	357-0030	1	*+ Rectifier, Silicon (6 Amp)	26	191-2177	1	*+ Socket, Contact (Used in P7)
10	351-1599-42	1	+ Resistor (24 Ohms) (Used on TB1)	27	166-0850	2	+ Socket, Contact (Used in P8)
11	323-1492	3	*+ Socket, Contact (Used on E1)	28	323-1765	1	* Housing, Connector – 4 Pin (S7)
12	319-2006-01	1	*+ Bracket, Terminal Mounting	29	323-1712	4	* Seal
13	332-0604	1	*+ Block, Terminal – 5 Place (T26)	30	323-1708	10	* Seal, Cable (S7) (P8)
14	332-1043	4	*+ Jumper (T26)	31	323-1710	1	* Connector – 10 Pin (P8)
15	815-0538	2	*+ Screw, Machine – Round Head – Cross Recessed W/IT (8-32 x .50)	32	323-1707	6	* Socket, Contact (Used in P8)
16	323-1591	1	*+ Plug, Connector (Used in E1)	33	338-3682	1	Harness, Wiring – AC Auxiliary (Includes Parts Marked #)
17	323-1548	1	*+ Wedge, Plug (Used in E1)	34	323-1644-01	1	# Housing, Plug (J2)
				35	323-1647	9	# Pin, Contact (Used in J2)
				*	Parts Included in 338-3796 Engine to Control Wiring Harness		
				+	Parts Included in 338-3670 Engine to Control Wiring Harness		
				#	Parts Included in 338-3682 AC Auxiliary Wiring Harness		

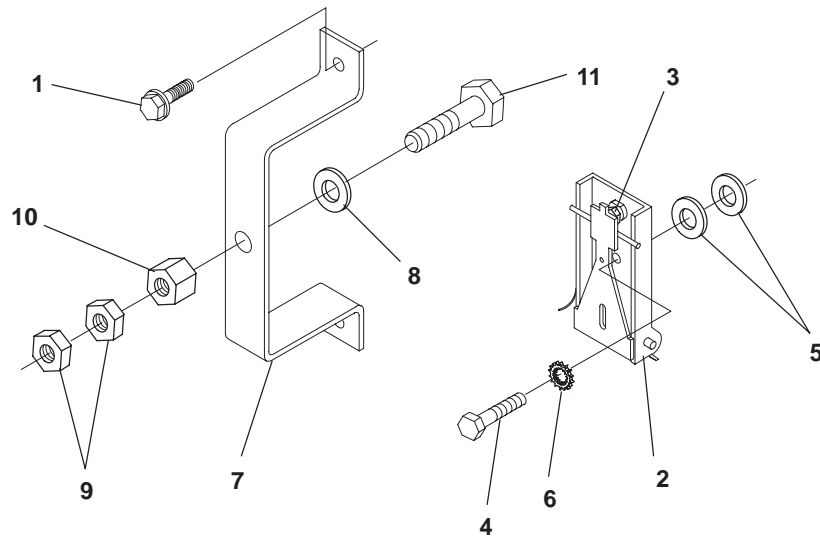
Electronic Overspeed Sentinel Control



H562

REF NO.	PART NO.	QTY USED	PART DESCRIPTION	REF NO.	PART NO.	QTY USED	PART DESCRIPTION
1	319-3384	1	Bracket, Overspeed	8	815-0865-13	2	Screw, Pan Head -Slotted (M4 x 45)
2	300-4324	1	Board, Printed Circuit - Overspeed	9	850-2004	2	Washer, Lock - Spring (M4)
3	526-0174	1	Washer, Flat (3/8)	10	860-2005	2	Nut, Hex (M4)
4	526-0124	2	Washer, Flat (3/8)	11	821-5002-04	2	Screw, Hex Head (1/4-20 x 5/8)
5	166-0767	1	Rotor, Ignition				
6	850-0050	1	Washer, Lock - Spring (3/8)				
7	800-0515	1	Screw, Cap - Hex Head (3/8 x 1.75)				

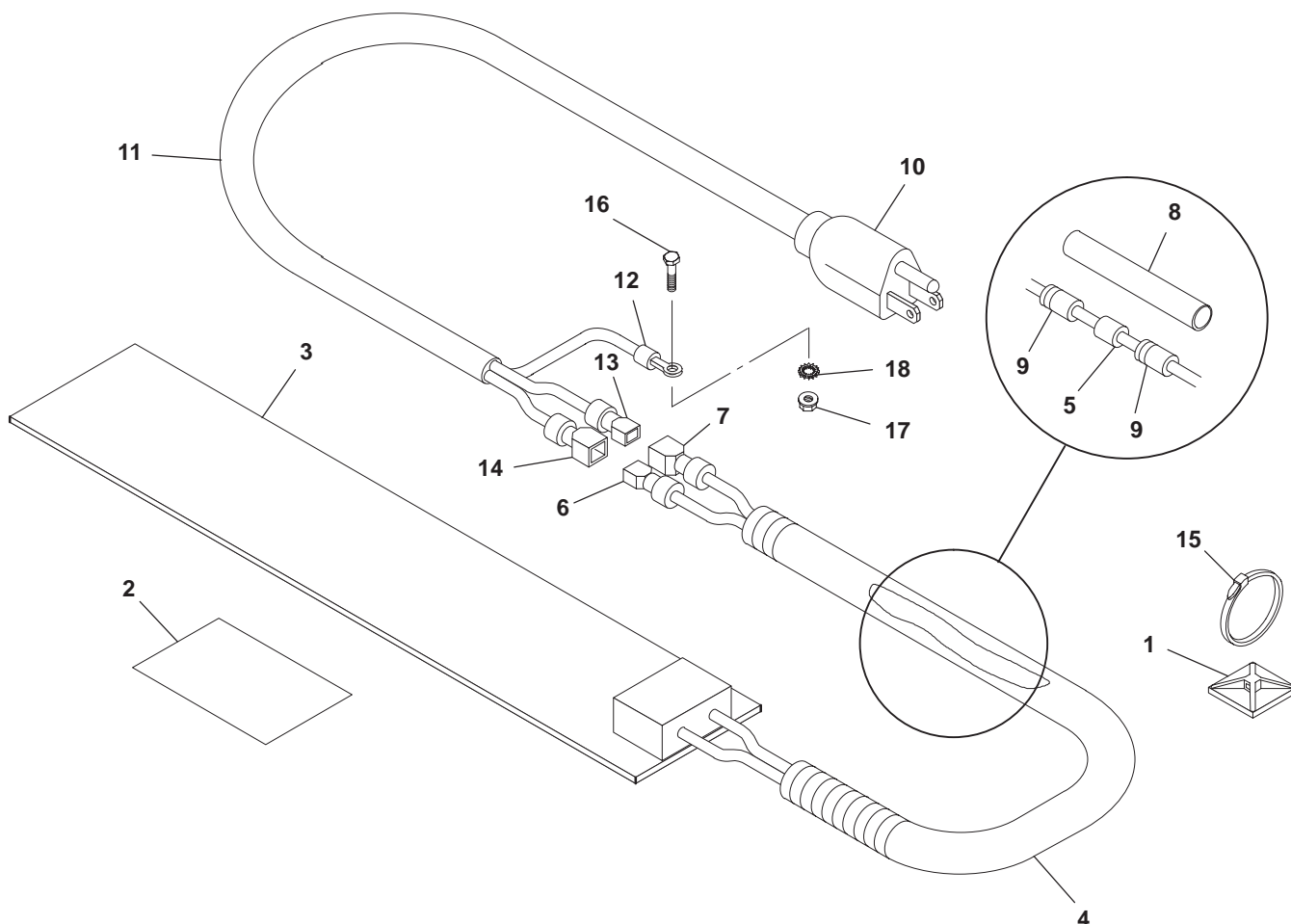
Overspeed Switch Detector Control



H560,H559

REF NO.	PART NO.	QTY USED	PART DESCRIPTION	REF NO.	PART NO.	QTY USED	PART DESCRIPTION
1	821-0010	2	Screw, Lock (1/4-20 x 1/2")	6	856-0010	1	Washer, Lock - EIT (3/8")
2	150-0716	1	Switch, Overspeed	7	150-1445	1	Bracket, Overspeed Switch
3	815-0823	1	Screw, Cap - Hex Head (8-32 x 3/8")	8	853-0013	1	Washer, Lock - ET (1/4")
4	800-0051	1	Screw, Cap - Hex Head (3/8-16 x 1-1/4")	9	862-0001	2	Nut, Hex (1/4-20)
5	526-0077	2	Washer, Flat (13/32)	10	870-0250	1	Nut, Insul (1/4-20)
				11	150-0723	1	Point, Overspeed

Control Heater

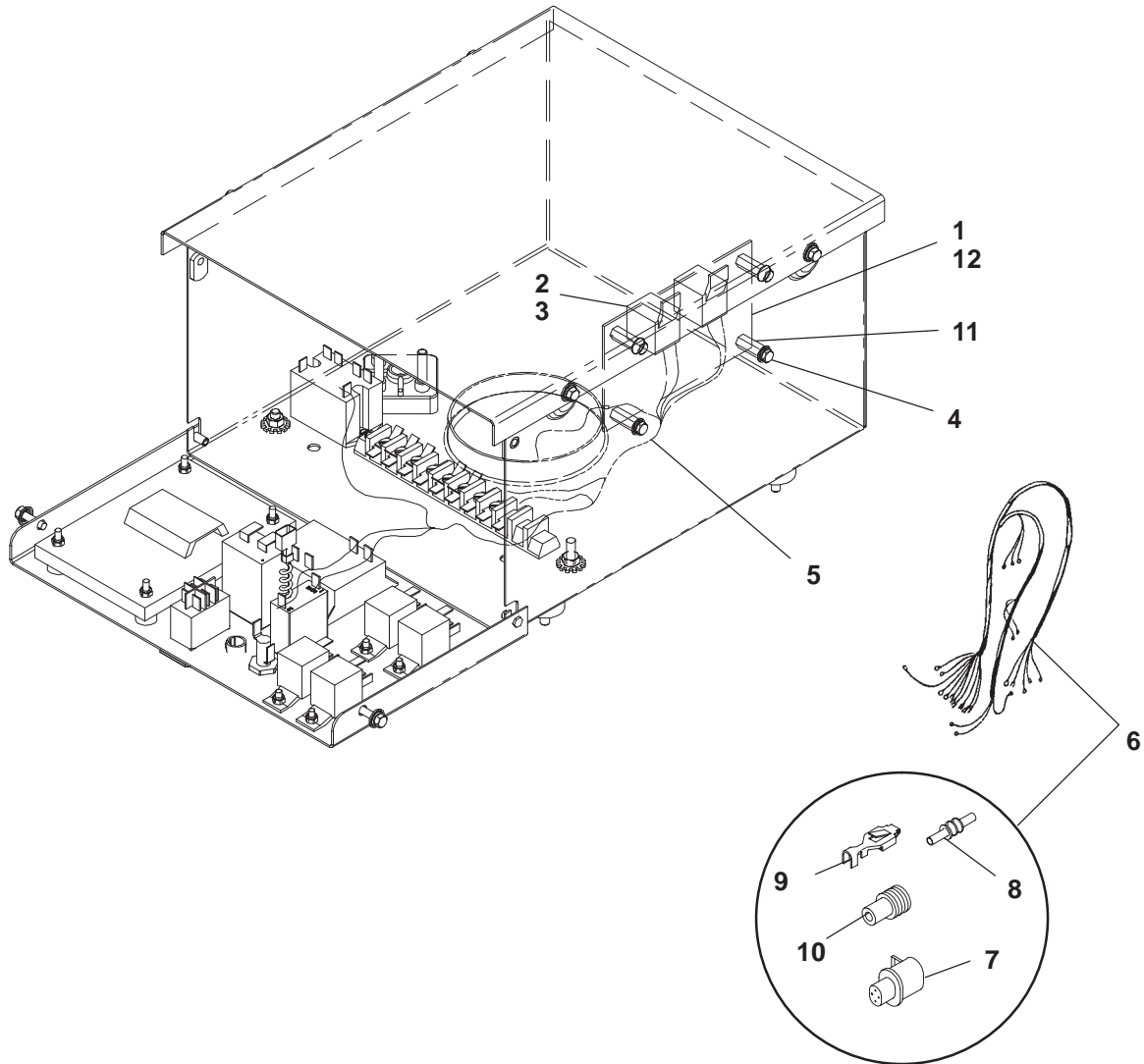


A362

REF NO.	PART NO.	QTY USED	PART DESCRIPTION	REF NO.	PART NO.	QTY USED	PART DESCRIPTION
1	332-3338	2	Mount, Tie – Cable	11	335-0110	1	* Cable
2	098-6195	1	Label, Caution	12	332-2697	1	* Terminal, Ring
3	333-0550-01	1	Heater, Control 120 Volt	13	332-1992	1	* Terminal, Receptacle
4	898-1195-01	A/R	Sleeving, Convoluted	14	332-2430	1	* Terminal, Tab
5	357-0114	1	Rectifier, Power	15	332-0942	3	Tie, Cable
6	332-1992	1	Terminal, Receptacle	16	800-0024	1	Screw, Cap – Hex Head (5/16-18 x 3/4)
7	332-2430	1	Terminal, Tab	17	870-0257	1	Nut, Hex – Self Locking (5/16-18)
8	898-0860	A/R	Tubing, Heat Shrink	18	856-0008	2	Washer, Lock EIT (5/16)
9	332-1789	2	Splice, Window (18 Gauge)				
10	335-0173	1	Cable, Heater – Control (Includes Parts Marked *)				

* – Parts Included In 335-0173 Control Heater Cable

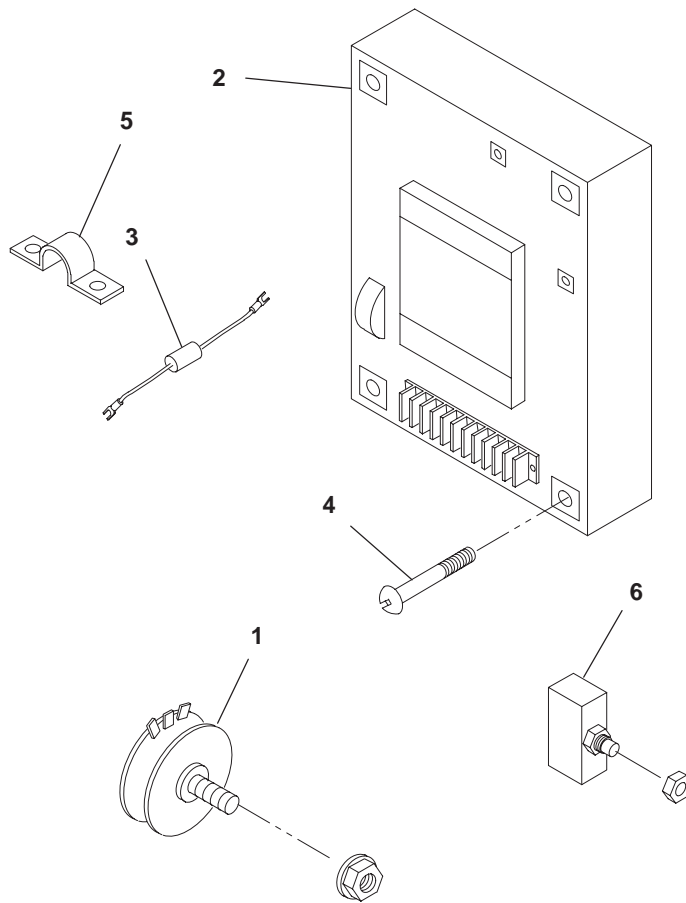
Dry Contact Spec B, C



H568

REF NO.	PART NO.	QTY USED	PART DESCRIPTION	REF NO.	PART NO.	QTY USED	PART DESCRIPTION
1	319-3601-02	1	Panel, Relay	7	323-1765	1	# Housing, Connector (4 Pin)
2	307-2817-01	2	Relay (K8, K9)	8	323-1712	A/R	# Plug, Cavity
3	821-6001-02	2	Screw, Hex Head (M5 x 0.8 x 12)	9	323-1709	A/R	# Socket, Contact (Used in S7)
4	821-5000-05	4	Screw, Hex Head (#10-32 x 1/2")	10	323-1708	A/R	# Seal, Cable
5	338-3731	1	Harness, Wiring – Control	11	870-2204	4	Standoff, Hex (#10-32)
6	338-3743	1	Harness, Wiring – Dry Contact (Includes Parts Marked #)	12	870-0131	4	Nut, Hex – W/ET (#10-32)
				# – Parts Included in 338-3743 Wiring Harness			

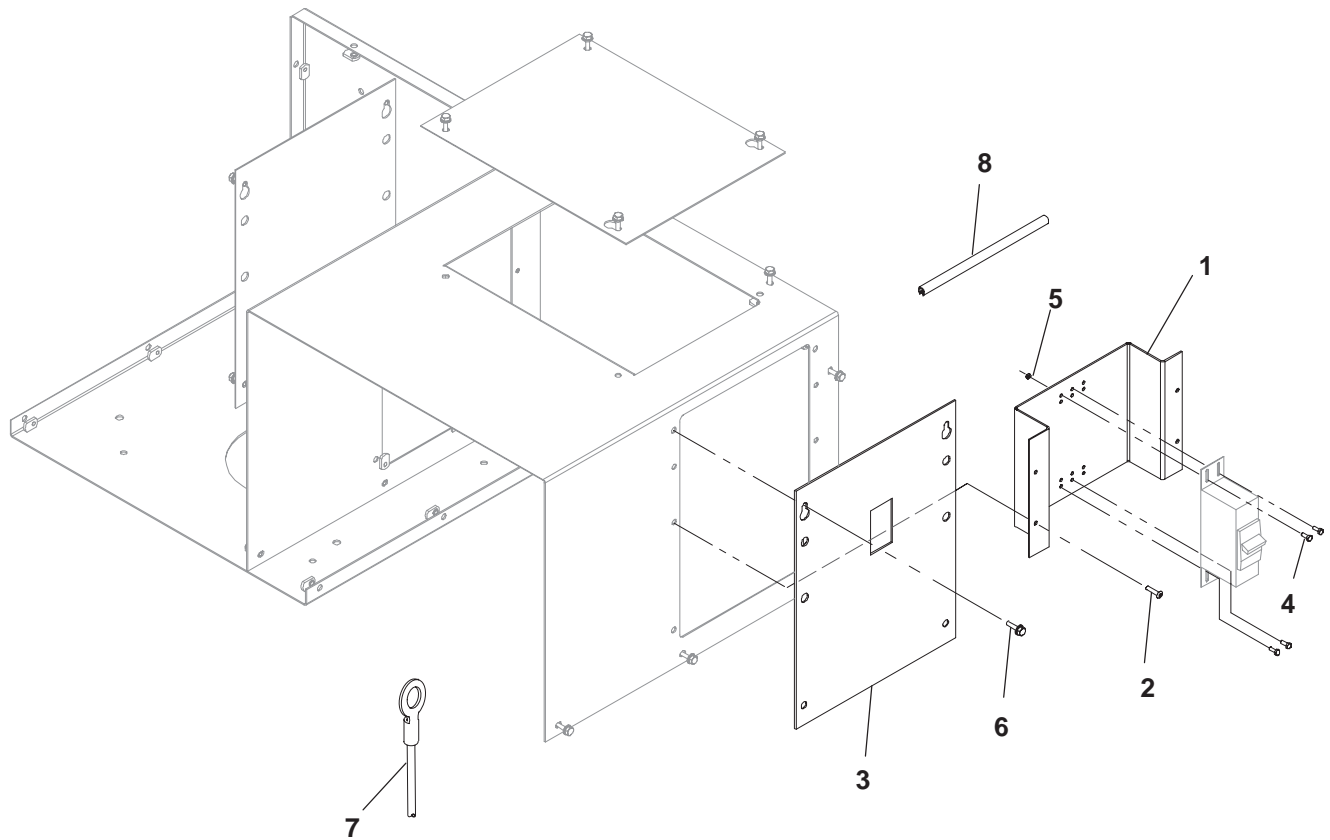
Voltage Regulator Detector Control



B240

REF NO.	PART NO.	QTY USED	PART DESCRIPTION	REF NO.	PART NO.	QTY USED	PART DESCRIPTION
1	303-0261	1	Potentiometer (R21)	4	815-0905-08	4	Screw, Cross Recessed (#10-32 x 7/8)
2	305-0982	1	Board, Printed Circuit – Voltage Regulator (Model SX460) (VR21)	5	332-1043	1	Jumper
3	350-1222	1	Resistor (TB21)	6	320-1688-01	1	Breaker, Circuit (CB21)

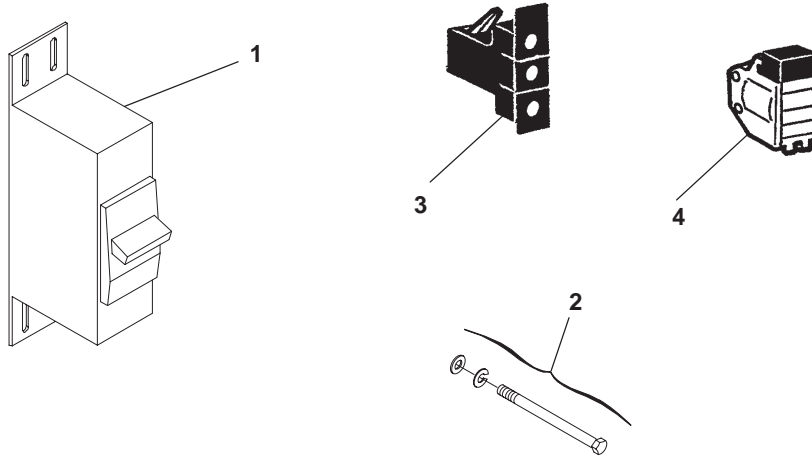
Circuit Breaker Mounting Bracket Detector Control



KB16,17,KM03,04,05,06,07,08,09,10,1

REF NO.	PART NO.	QTY USED	PART DESCRIPTION	REF NO.	PART NO.	QTY USED	PART DESCRIPTION
1			Bracket, Mounting – Circuit Breaker	4	800–3042	4	Screw, Hex Head (M4 x 0.7 x 10) – Used With 2 Pole Circuit Breaker
	319–3314	1	Used With 2 Pole Circuit Breaker	5	870–2064–01	4	Nut, Lock (M4) – Used With 2 Pole Circuit Breaker
	319–3337	1	Used With 3 Pole Circuit Breaker – Spec A	6	821–6002–03	4	Screw, Hex Head (M6 x 1 x 16)
	319–3905–02	1	Used With 3 Pole Circuit Breaker – 480V – Spec B, C	7			Lead
	319–3648	1	Used With 3 Pole Circuit Breaker – 600V – Spec B, C		226–4778–02	2	Used With 2 Pole Circuit Breakers
2	818–0231–02	4	Rivet, Pop		226–4778–02	3	Used With 40–100 Amp Circuit Breakers
3			Cover, Circuit Breaker		226–4778–04	3	Used With 15–30 Amp Circuit Breakers
	319–3315–02	1	Used With 2 Pole Circuit Breaker	8	508–0305–02	–	Edging – Bulk (Order By The Foot – 1 Foot Required) Used With 2 Pole Circuit Breakers
	319–3315–01	1	Used With 3 Pole Circuit Breaker – Spec A				
	319–3315–09	1	Used With 3 Pole Circuit Breaker – 480V – Spec B, C				
	319–3315–07	1	Used With 3 Pole Circuit Breaker – 600V – Spec B, C				

Circuit Breaker Spec A



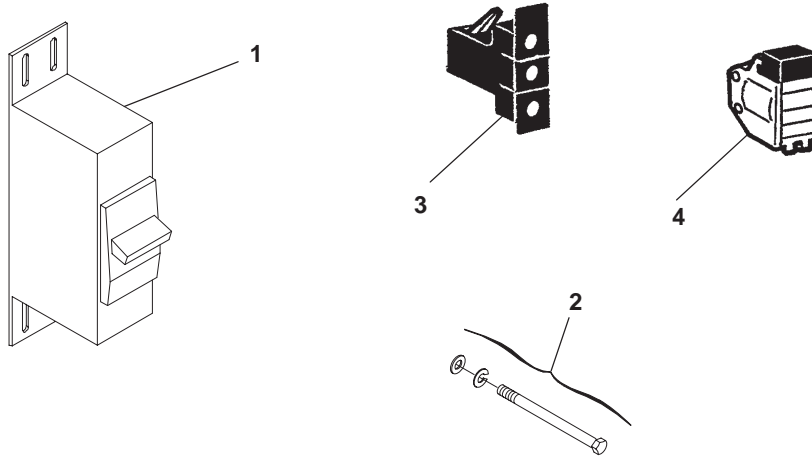
KM03,04,05,06,07,08,09,10,1,KB16,KB17,K883,KL41

REF NO.	PART NO.	QTY USED	PART DESCRIPTION
1			Breaker, Circuit
			2 Pole (UL)
	320-2006-03	1	90 Amp
	320-2006-02	1	100 Amp
			3 Pole (UL & IEC)
	320-1975-09	1 *	30 Amp
	320-1975-08	1 *	40 Amp
	320-1975-07	1 *	45 Amp
	320-1975-06	1 *	50 Amp
	320-1975-05	1 *	60 Amp
	320-1975-04	1 *	70 Amp
	320-1975-03	1 *	80 Amp
	320-1975-02	1 *	90 Amp
	320-1975-01	1 *	100 Amp

REF NO.	PART NO.	QTY USED	PART DESCRIPTION
2	320-1986-04	1	Package, Hardware – Circuit Breaker Mounting (Includes Screws, Nuts and Lock Washers)
			Accessories, Circuit Breaker:
			The following are used on 320-1975-XX Circuit Breakers
3	320-1979-01	1	Contact, Auxiliary Switch
4	320-1979-02	1	Trip, Shunt (12V)

* – Includes Mounting Hardware

Circuit Breaker Spec B, C



KM34,KM33,KM32,KM31,KM95,KM94,KM93,KM92,K883,KL41,KB17,KB16

REF NO.	PART NO.	QTY USED	PART DESCRIPTION	REF NO.	PART NO.	QTY USED	PART DESCRIPTION
1			Breaker, Circuit	2	320-1986-08	1	Package, Hardware – Circuit Breaker Mounting (Includes Screws, Nuts and Lock Washers)
	320-2006-03	1	2 Pole (UL)				
	320-2006-02	1	90 Amp				
			100 Amp				
	320-2009-10	1	3 Pole (UL & IEC) (480V)				Accessories, Circuit Breaker:
	320-2009-09	1	*				The following are used on
	320-2009-08	1	20 Amp				320-1959-XX Circuit
	320-2009-06	1	*				Breakers
	320-2009-05	1	30 Amp	3	320-1981-01	2	Switch – Used as Auxiliary Contact or Trip Alarm
	320-2009-04	1	*	4	320-1981-02	1	Trip, Shunt (12V)
	320-2009-03	1	40 Amp				
	320-2009-01	1	*				
			50 Amp				
			60 Amp				
			70 Amp				
			80 Amp				
			1000 Amp				
	320-1959-21	1	3 Pole (UL & IEC) (600V)				
	320-1959-20	1	*				
	320-1959-19	1	20 Amp				
	320-1959-18	1	*				
	320-1959-17	1	30 Amp				
	320-1959-10	1	*				
	320-1959-09	1	40 Amp				
	320-1959-08	1	*				
	320-1959-07	1	50 Amp				
			60 Amp				
			70 Amp				
			80 Amp				
			90 Amp				
			100 Amp				

* – Includes Mounting Hardware

Numerical Index

<u>Part No.</u>	<u>Page</u>	<u>Part No.</u>	<u>Page</u>	<u>Part No.</u>	<u>Page</u>	<u>Part No.</u>	<u>Page</u>
098-4500, 31		148-0737, 16, 18		191-2217, 33		308-1010, 41	
098-4730, 31		148-0998, 13, 15, 17, 18		191-2218, 33		308-1011, 39, 41	
098-4732, 31		148-1099, 19		191-2219, 33		308-1052, 41	
098-5429, 31		148-1104, 12, 13, 14, 15, 16, 17, 18		191-2221, 33		308-1082, 41	
098-6139-05, 31		149-2617, 17, 18		191-2222, 33		309-0641-19, 7	
098-6195, 48		149-2622, 16, 18		191-2263, 22		309-0662, 7	
098-7451, 31		150-0716, 47		191-2268-01, 23		319-2006-01, 45	
101-0823, 7		150-0723, 47		191-2268-02, 22		319-3030, 41	
102-1054-01, 7		150-0939, 20		191-2276-02, 24		319-3312, 34	
104-1944, 7		150-1445, 47		193-0351, 41		319-3313, 34	
104-1951, 7		150-2550, 20		193-0448, 7		319-3314, 51	
128-0154-02, 29		150-2620, 20		193-0451, 8		319-3315-01, 51	
130-1793, 23, 24		150-2651, 20		193-0463, 8		319-3315-02, 51	
130-1798, 23, 24		150-2689, 12, 13, 14, 15, 16, 17, 18		193-0466, 41		319-3315-07, 51	
130-3552, 23, 24		150-2692-01, 20		193-0468, 27		319-3315-09, 51	
130-3570, 27		150-2694, 20		193-0477, 7		319-3316, 34	
130-3571, 27		155-0360-01, 21		226-4778-01, 39		319-3321, 39	
130-3572, 27		155-0927, 21		226-4778-02, 51		319-3322, 39	
130-3721-01, 23, 24		155-1256, 12, 13, 14, 15, 17, 18		226-4778-03, 39		319-3324, 39	
130-4770-03, 23, 24		155-1924, 21		226-4778-04, 51		319-3325-01, 39	
130-4792, 23, 24		155-1926, 21		231-0386, 7		319-3326, 39	
130-4796, 23, 24		155-2715, 7		232-3441, 7		319-3337, 51	
130-4833, 23, 24		155-2984, 7		234-0665, 7		319-3338, 39	
130-4834, 25		155-3242, 7		300-4296, 41		319-3339, 39	
130-4835, 25		166-0767, 46		300-4324, 46		319-3384, 46	
130-4839, 23		166-0844, 7		300-5098, 41		319-3601-02, 49	
130-4846, 27		166-0845, 7		301-9054-01, 41		319-3646, 39	
130-4856, 23		166-0849, 43, 45		301-9055-01, 41		319-3647, 39	
130-4958-02, 24		166-0850, 43, 45		302-1148, 41		319-3648, 51	
130-4959-02, 24		166-0860, 43, 45		302-1473, 41		319-3823-01, 39	
130-5003-02, 24		166-0867, 9		302-1641, 41		319-3824-01, 39	
130-5116-02, 24		166-0868, 7		302-1753, 41		319-3905-02, 51	
130-5117-02, 24		191-2176, 43, 45		302-1968, 41		320-1688-01, 50	
140-0078, 21		191-2177, 43, 45		302-2002, 39, 41		320-1824-02, 39	
140-1089, 10		191-2178, 43, 45		303-0261, 50		320-1941, 39	
140-1583, 10		191-2179, 43, 45		305-0982, 39, 50		320-1959-07, 53	
140-3146, 11		191-2181, 43, 45		307-0268-01, 16, 18		320-1959-08, 53	
140-3147, 11		191-2200, 33		307-0312, 12, 13, 14, 15, 17, 18		320-1959-09, 53	
140-3198-02, 11		191-2213, 33		307-2677-03, 39		320-1959-10, 53	
140-3199-02, 11		191-2215, 33		307-2817-01, 17, 18, 39, 45, 49		320-1959-17, 53	
140-3202, 11		191-2216, 33		307-2871, 39		320-1959-18, 53	
148-0597, 12, 13, 17, 18						320-1959-19, 53	
148-0637, 14, 15, 17							

Numerical Index

<u>Part No.</u>	<u>Page</u>	<u>Part No.</u>	<u>Page</u>	<u>Part No.</u>	<u>Page</u>	<u>Part No.</u>	<u>Page</u>
320-1959-20, 53		323-1492, 7, 43, 45		335-0110, 48		405-6162, 29, 31	
320-1959-21, 53		323-1541, 43		335-0173, 48		405-6163, 29	
320-1975-01, 52		323-1543, 43		337-0049, 41		405-6164, 29, 31	
320-1975-02, 52		323-1546, 45		337-0090, 7		405-6167, 29, 31	
320-1975-03, 52		323-1548, 7, 45		338-2278, 41		405-6168, 29, 31	
320-1975-04, 52		323-1549, 7		338-3252, 41		405-6169, 29, 31	
320-1975-05, 52		323-1591, 45		338-3429, 41		405-6170, 29, 31	
320-1975-06, 52		323-1644-01, 45		338-3594, 27		405-6195, 31	
320-1975-07, 52		323-1644-02, 41		338-3654, 16, 18		405-6196, 31	
320-1975-08, 52		323-1647, 45		338-3667, 19		405-6197, 31	
320-1975-09, 52		323-1648, 41		338-3669, 43		405-6199, 31	
320-1979-01, 52		323-1707, 43, 45		338-3670, 45		405-6200-02, 31	
320-1979-02, 52		323-1708, 27, 43, 45, 49		338-3680, 39		405-6201-02, 31	
320-1981-01, 53		323-1709, 27, 49		338-3682, 45		405-6202, 29	
320-1981-02, 53		323-1710, 43, 45		338-3698, 17, 18		405-6228-02, 31	
320-1986-04, 52		323-1712, 43, 45, 49		338-3731, 49		405-6229-02, 31	
320-1986-08, 53		323-1765, 27, 45, 49		338-3733, 39		405-6231-02, 31	
320-2006-02, 52, 53		331-0027, 13, 15		338-3734, 43		405-6235, 31	
320-2006-03, 52, 53		331-0041, 35		338-3743, 49		405-6236, 31	
320-2009-01, 53		332-0052, 41		338-3795, 43		405-6299-02, 29, 31	
320-2009-03, 53		332-0604, 45		338-3796, 45		405-6300-02, 29, 31	
320-2009-04, 53		332-0607, 41		338-3816, 17, 18		406-0332, 41	
320-2009-05, 53		332-0942, 48		350-0980, 43		406-0333, 41	
320-2009-06, 53		332-1043, 45, 50		350-1222, 50		406-0334, 41	
320-2009-08, 53		332-1389, 27		351-1599-42, 45		406-0561, 31	
320-2009-09, 53		332-1554, 20		355-0189, 41		406-0614, 29	
320-2009-10, 53		332-1789, 48		357-0030, 39, 43, 45		406-0615, 29	
321-0175, 39		332-1794, 19		357-0114, 48		416-0643, 7	
321-0307-03, 41		332-1992, 48		402-0282, 32		416-0961, 32	
321-0307-06, 41		332-2430, 48		402-0285, 32		416-1019, 7	
321-0307-07, 41		332-2634, 7, 23, 24, 28		402-0286, 32		416-1045, 7	
321-0353, 39		332-2697, 48		402-0290, 32		416-1046, 7	
322-0004, 41		332-2723, 41		402-0527, 41		502-0153, 23, 24	
322-0360-01, 41		332-3249, 34, 39		402-0669, 39		502-0613, 28	
322-0361, 41		332-3338, 48		403-1830, 32		502-0870, 28	
322-0363, 41		332-3564, 39		403-3795, 32		502-0942, 16, 18	
322-0369-01, 41		332-3573, 39		403-4254, 32		503-0131, 16, 18, 28	
323-1200, 45		333-0184, 35		403-4255, 32		503-0183, 23, 24, 28	
323-1302, 41, 45		333-0228, 35		405-1872, 29, 31		503-0197, 7	
323-1304, 45		333-0550-01, 48		405-1889, 29, 31		503-0429, 23, 24	
323-1306, 45		333-0588-01, 28		405-4932, 29, 31		503-0446, 10	
323-1308, 41		333-0588-02, 28		405-6097, 29, 31		503-0685, 26	
323-1374-12, 45		333-0624, 28		405-6098, 34, 39		503-0832, 28	

Numerical Index

<u>Part No.</u>	<u>Page</u>	<u>Part No.</u>	<u>Page</u>	<u>Part No.</u>	<u>Page</u>	<u>Part No.</u>	<u>Page</u>
503-0833, 28		505-0185, 7		800-0602, 20		821-6001-02, 29, 31, 49	
503-0869, 22		505-0210, 16, 17, 18		800-2010, 9		821-6001-03, 34, 39	
503-0977, 24		505-0332, 17		800-2015, 7		821-6002-03, 28, 34, 39, 51	
503-1138, 22		505-0395, 7		800-2040, 32		821-6003-02, 23, 24, 25, 29, 31	
503-1168, 23, 24		505-0462, 21		800-2056, 22		821-6003-03, 12, 13, 14, 15, 16, 17, 18, 27	
503-1169, 16, 18		505-0754, 12, 13, 14, 15, 17, 18		800-2057, 32		850-0040, 20, 35	
503-1195, 7		505-1496, 13, 15, 17, 18		800-2070, 23		850-0045, 41	
503-1274, 26		508-0051, 41		800-2071, 24		850-0050, 46	
503-1338, 9		508-0305-02, 34, 51		800-2086, 7, 32		850-0055, 32	
503-1606, 10, 11		508-1127, 39		800-2088, 7		850-2004, 46	
503-2085, 23, 24		517-0094, 13, 15		800-2089, 7		850-2005, 7, 9	
503-2092, 23, 24		517-0131, 41		800-2093, 7		850-2008, 22, 23, 24	
504-0003, 23		517-0133, 39		800-2095, 32		850-2010, 7	
504-0011, 7		517-0138-09, 29, 31		800-3042, 39, 51		850-2056, 32	
504-0028, 7		517-0289, 11		803-0032, 7		853-0008, 41	
504-0171, 17, 18		517-0301, 41		812-0084, 29		853-0013, 47	
504-0198, 7		517-0302, 41		812-0167, 35		856-0006, 39	
505-0002, 12, 13, 14, 15, 16, 17, 18		518-0601, 5		815-0194, 23, 24		856-0008, 34, 39, 41, 48	
505-0007, 7, 8, 19		520-1014, 11		815-0236, 34, 39		856-0009, 32	
505-0011, 19		520-2214-02, 12, 13, 14, 15, 16, 17, 18		815-0385, 41		856-0010, 7, 47	
505-0021, 12, 13, 14, 15, 18		525-0304, 5		815-0388, 41		860-2005, 46	
505-0025, 29, 31		525-0305, 5		815-0538, 45		860-2006, 7, 9	
505-0032, 29, 31		525-0306, 5		815-0793-03, 9		860-2057, 39	
505-0040, 16		526-0003, 29, 31		815-0823, 47		862-0001, 47	
505-0043, 21		526-0014, 32		815-0865-13, 46		865-0006, 11	
505-0051, 13, 15		526-0018, 20, 41		815-0875-02, 41		865-0020, 11	
505-0054, 7		526-0077, 47		815-0901-06, 41		870-0131, 20, 41, 49	
505-0071, 8		526-0122, 32		815-0905-08, 41, 50		870-0183, 41	
505-0084, 17, 18		526-0124, 46		815-0925-01, 39		870-0212, 20	
505-0085, 12, 13, 14, 15		526-0141, 23, 24		816-0152, 23, 24		870-0221, 29	
505-0098, 19		526-0174, 32, 46		818-0150, 29, 31		870-0250, 47	
505-0099, 16, 17, 18		526-0179, 7		818-0231-02, 24, 25, 29, 31, 51		870-0257, 23, 24, 32, 48	
505-0100, 16		526-0399-13, 16, 18		821-0004, 41		870-0258, 29, 31	
505-0102, 12, 13, 14, 15, 17, 18		526-2100, 12, 13, 14, 15, 16, 17, 18		821-0010, 29, 31, 47		870-0281, 23, 24	
505-0105, 13, 15		526-2120, 7		821-0014, 34		870-1220, 41	
505-0110, 7		800-0008, 20		821-2032, 22		870-2054, 39	
505-0132, 12, 13, 14, 15, 17, 18		800-0024, 41, 48		821-2033, 23, 24		870-2055, 7, 12, 13, 14, 15, 16, 17, 18, 21	
505-0150, 17, 18		800-0045, 41		821-2034, 27		870-2064-01, 39, 51	
505-0158, 16, 18		800-0051, 47		821-2050, 21		870-2204, 49	
505-0167, 17, 18		800-0081, 32		821-2060, 28		871-0015, 41	
505-0184, 8		800-0515, 46		821-5000-05, 41, 49			
				821-5002-04, 46			

Numerical Index

<u>Part No.</u>	<u>Page</u>	<u>Part No.</u>	<u>Page</u>	<u>Part No.</u>	<u>Page</u>	<u>Part No.</u>	<u>Page</u>
895-0387,	29, 31						
898-0860,	48						
898-1195-01,	48						



Onan Corporation
1400 73rd Avenue N.E.
Minneapolis, MN 55432
612-574-5000
Telex: 275477
Fax: 612-574-8087

Onan is a registered trademark of Onan Corporation
Cummins is a registered trademark of Cummins Engine Company