

PARTS CATALOG

FOR



DIESEL ELECTRIC GENERATING PLANTS

DRN SERIES

ONAN

2515 UNIVERSITY AVE. S.E. • MINNEAPOLIS, MINNESOTA 55414

A DIVISION OF STUDEBAKER CORPORATION

IN CANADA: ONAN GENERATORS CANADA LTD., POST OFFICE BOX 652, GUELPH, ONTARIO
INTERNATIONAL DISTRICT OFFICE: EMPIRE STATE BLDG., 350-5TH AVE., RM. 2204, NEW YORK 10001

939-2

1AC63 Printed in U.S.A.

INSTRUCTIONS FOR ORDERING REPAIR PARTS

FOR PARTS OR SERVICE, CONTACT THE DEALER FROM WHOM
YOU PURCHASED THIS EQUIPMENT OR REFER TO YOUR NEAR-
EST AUTHORIZED SERVICE STATION.

TO AVOID ERRORS OR DELAY IN FILLING YOUR PARTS ORDER, PLEASE
FURNISH ALL INFORMATION REQUESTED.

REFER TO THE NAMEPLATE ON YOUR PLANT

1. Always give the MODEL & SPEC. NO. and SERIAL NO.

The image shows a rectangular nameplate form for Onan equipment. At the top, it says 'ELECTRIC ONAN PLANT'. Below this, there are two main sections: 'MODEL AND SPECIFICATION NO.' and 'SERIAL NO.'. A large 'IMPORTANT' banner is followed by the instruction: 'MENTION ABOVE NUMBERS AND SERIAL NO. WHEN ORDERING PARTS OR WRITING ABOUT THIS PLANT'. Below the banner, there are several rows of fields for technical specifications: 'RATINGS AT SEA LEVEL BASED ON FUEL CHECKED BELOW:', 'GASOLINE' and 'DIESEL FUEL' (each with a box for 'KW' and 'KVA'), 'STAND BY' and 'CONTINUOUS' (each with 'KW' and 'KVA' boxes), 'A.C. VOLTS', 'CYCLES', 'PHASE', and 'P.F.' (each with a box), 'EXCITER' and 'GEN. DATA' (each with a box), and 'R.P.M.' and 'USE' (each with a box). At the bottom, it says 'VOLT BATTERY-NEGATIVE GROUND', 'MANUFACTURED BY ONAN', 'MINNEAPOLIS, 14 MINNESOTA', and 'MADE IN U.S.A.'.

For handy reference, copy YOUR plant
nameplate information in the spaces above.

2. Do not order by reference number or group number, use part number and description.
3. Give the part number, description and quantity needed of each item. If an old part cannot be identified, return the part prepaid to your dealer or nearest AUTHORIZED SERVICE STATION. Print your name and address plainly on the package. Write a letter to the same address stating the reason for returning the part.
4. State definite shipping instructions.

Any claim for loss or damage to your unit in transit should be filed promptly against the transportation company making the delivery. Shipments are complete unless the packing list indicates items are back ordered.

"Prices are purposely omitted from this Parts Catalog due to the confusion resulting from fluctuating costs, import duties, sales taxes, exchange rates, etc.

For Current parts prices, consult your Onan Dealer, Distributor or Parts and Service Center."

"En esta lista de partes los precios se omiten de proposito, ya que bastante confusion resulto de fluctuaciones de los precios, derechos aduanales, impuestos de venta, cambios extranjeros etc.

Consiga los precios vigentes de su distribuidor de productos "ONAN".

This parts catalog applies to the standard DRN Generating Plants as listed in the Plant Data Table.

Parts are illustrated and identified by corresponding reference numbers in the Parts List. Parts illustrations represent typical items and do not necessarily portray a particular part number.

Compare your plant nameplate MODEL and SPEC. NO. with the Plant Data Table. Select the Parts Key No. (1, 2, etc. in the last column) that applies to your plant Model and Spec. No. This Parts Key No. appears in the description of parts that differ between models. Unless otherwise mentioned in the parts description, parts are interchangeable between the various models.

Plant Data Table

| MODEL AND SPEC. NO. | TYPE | ELECTRICAL DATA | | | | | PARTS KEY NO. |
|---------------------|--------|-----------------|---------|--------|-------|------|---------------|
| | | WATTS | VOLTS | CYCLES | PHASE | WIRE | |
| 6DRN-1RV/1A * | REMOTE | 6000 | 120 | 60 | 1 | 2 | 1 |
| 6DRN-2RV/1A * | REMOTE | 6000 | 240 | 60 | 1 | 2 | |
| 5DRN-51RV/1A * | REMOTE | 5000 | 120 | 50 | 1 | 2 | |
| 5DRN-52RV/1A * | REMOTE | 5000 | 240 | 50 | 1 | 2 | |
| 6DRN-3RV/1A * | REMOTE | 6000 | 120/240 | 60 | 1 | 3 | 2 |
| 5DRN-53RV/1A * | REMOTE | 5000 | 120/240 | 50 | 1 | 3 | |
| 6DRN-4RV/1A * | REMOTE | 6000 | 120/208 | 60 | 3 | 4 | 3 |
| 5DRN-54RV/1A * | REMOTE | 5000 | 120/208 | 50 | 3 | 4 | |
| 6DRN-5RV/1A * | REMOTE | 6000 | 240 | 60 | 3 | 3 | 4 |
| 5DRN-55RV/1A * | REMOTE | 5000 | 240 | 50 | 3 | 3 | |

* = This Spec Letter advances with Manufacturing changes.

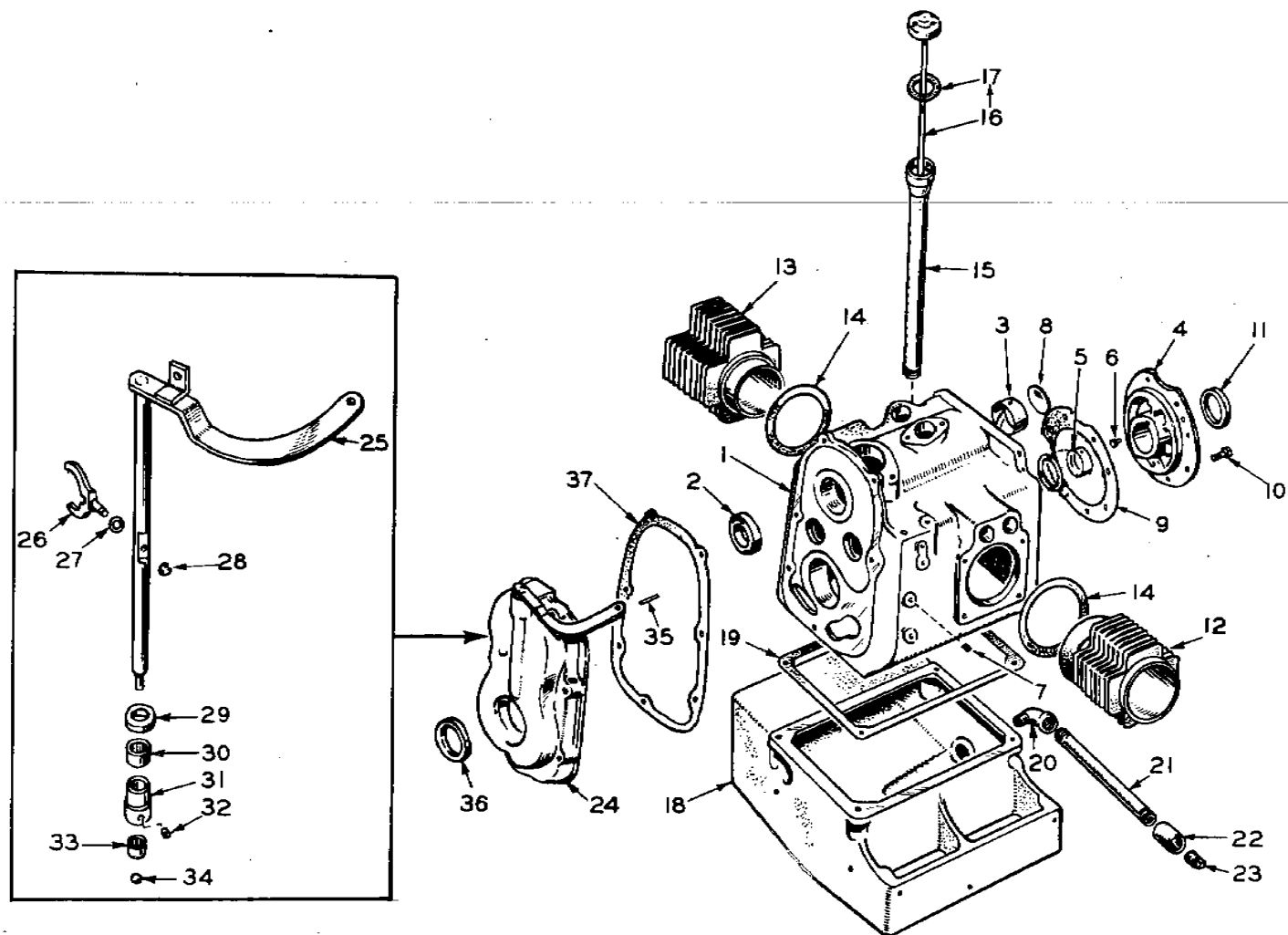


FIG. 1 - CRANKCASE, OIL BASE AND GEAR COVER GROUP



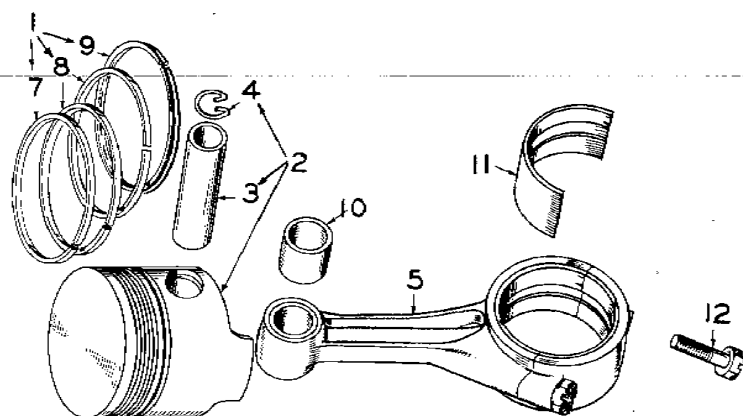


FIG. 4 - PISTON AND CONNECTING ROD GROUP

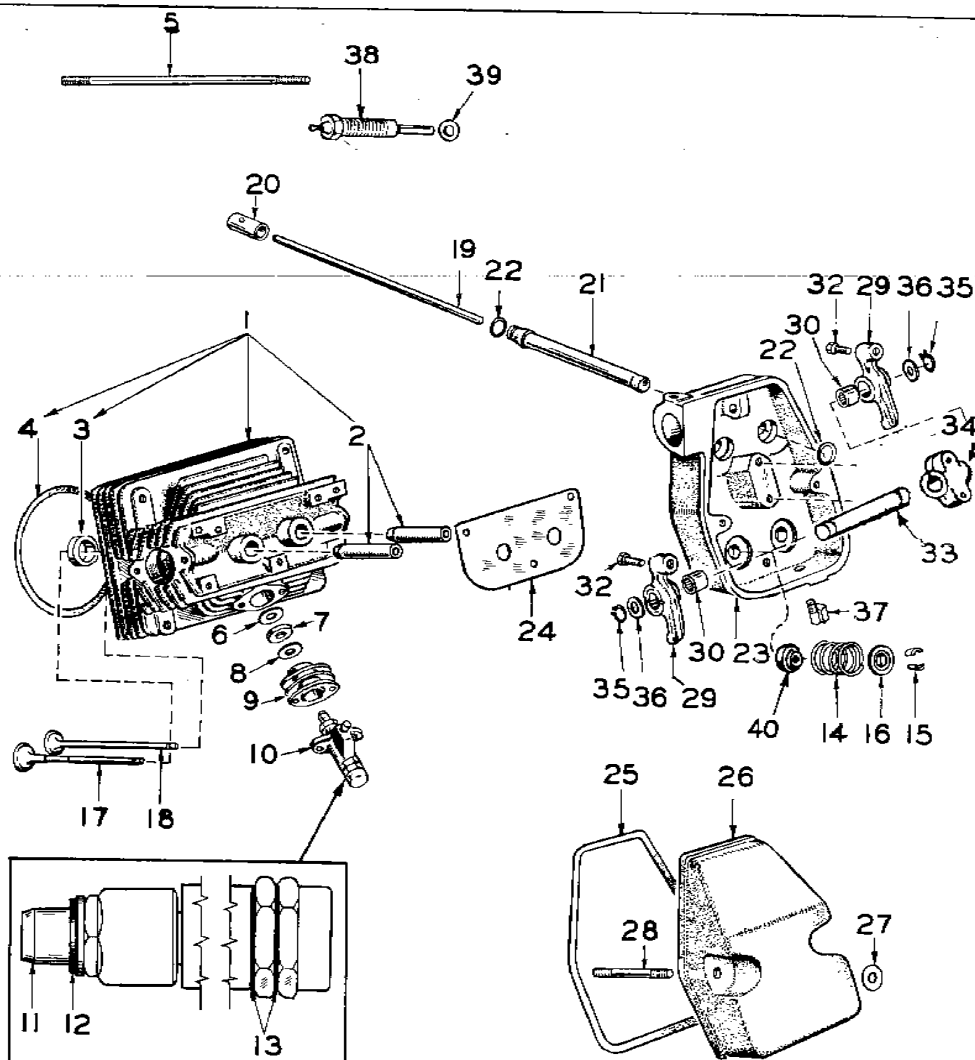


FIG. 5 - CYLINDER HEAD, VALVE AND ROCKER BOX GROUP

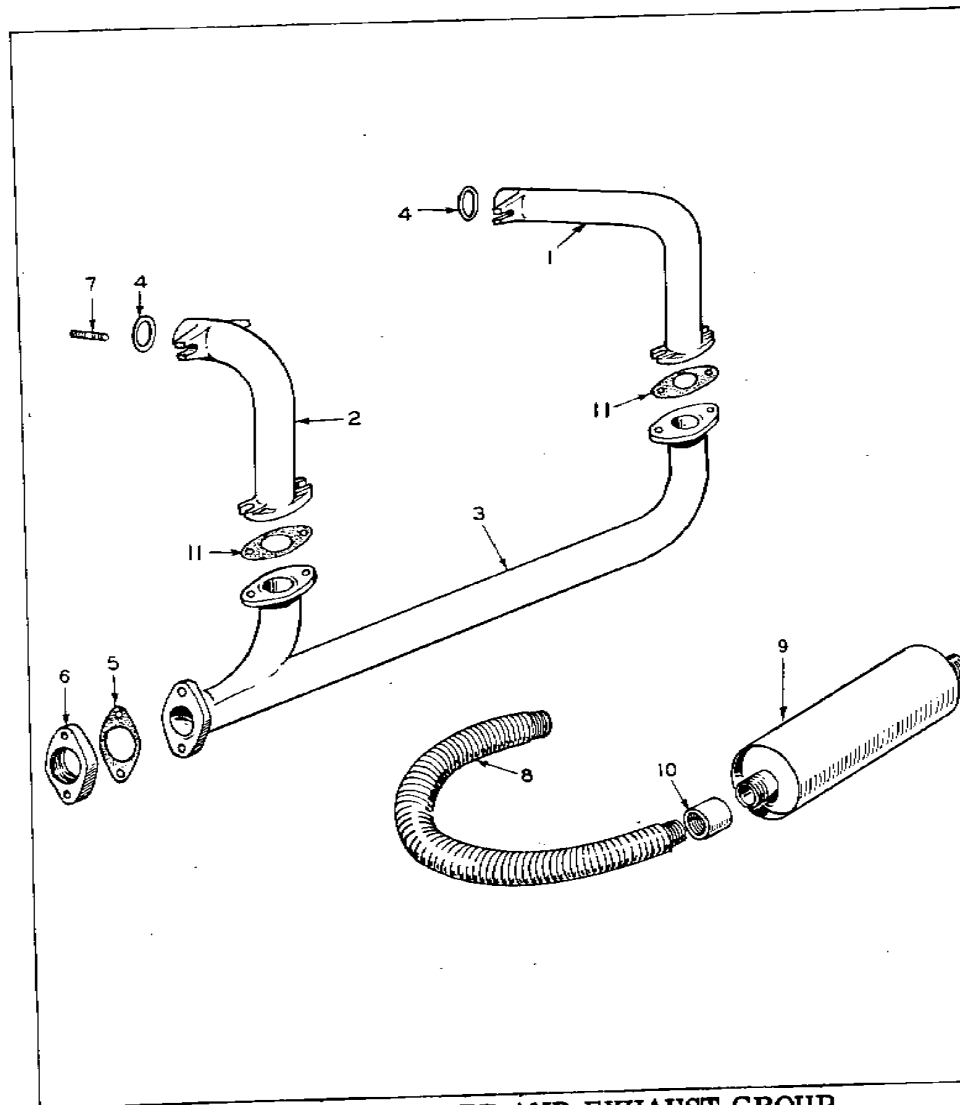


FIG. 6 - MUFFLER AND EXHAUST GROUP

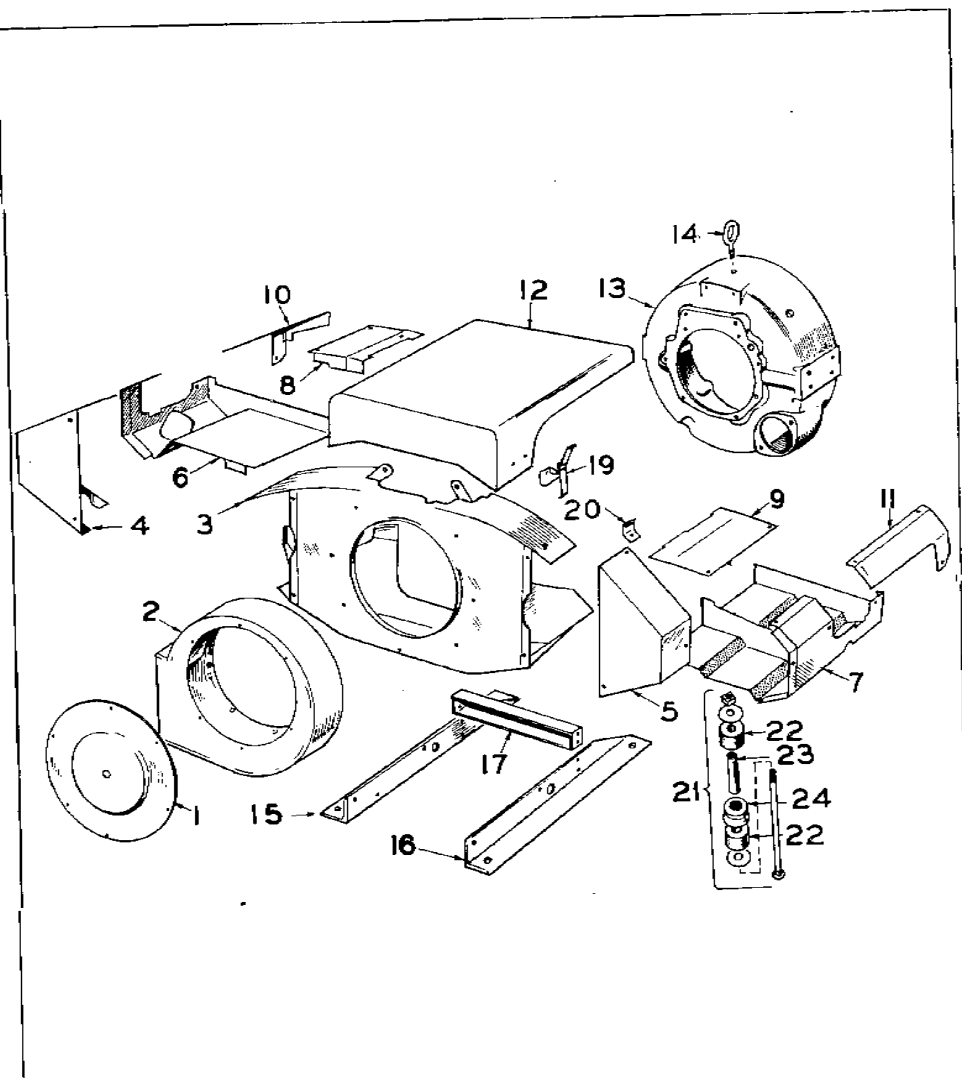


FIG. 7 - HOUSING AND MOUNTING GROUP

5

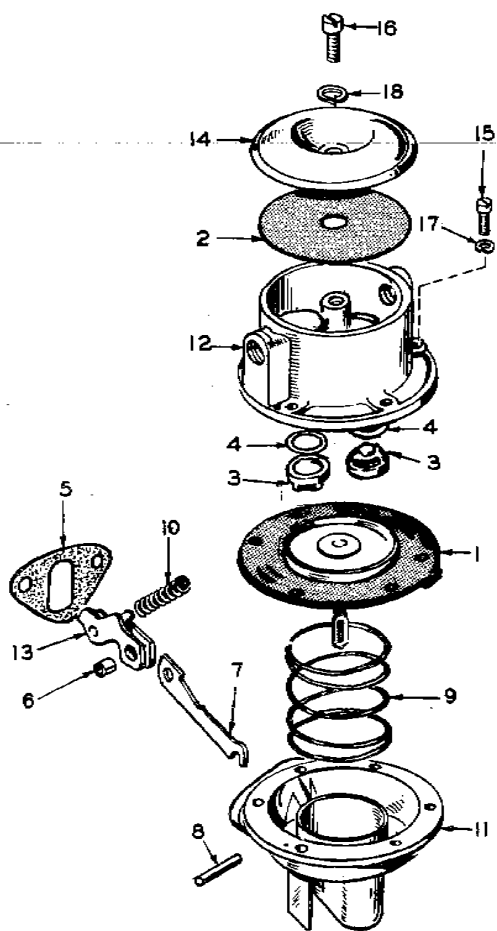


FIG. 8 - FUEL TRANSFER
PUMP PARTS GROUP

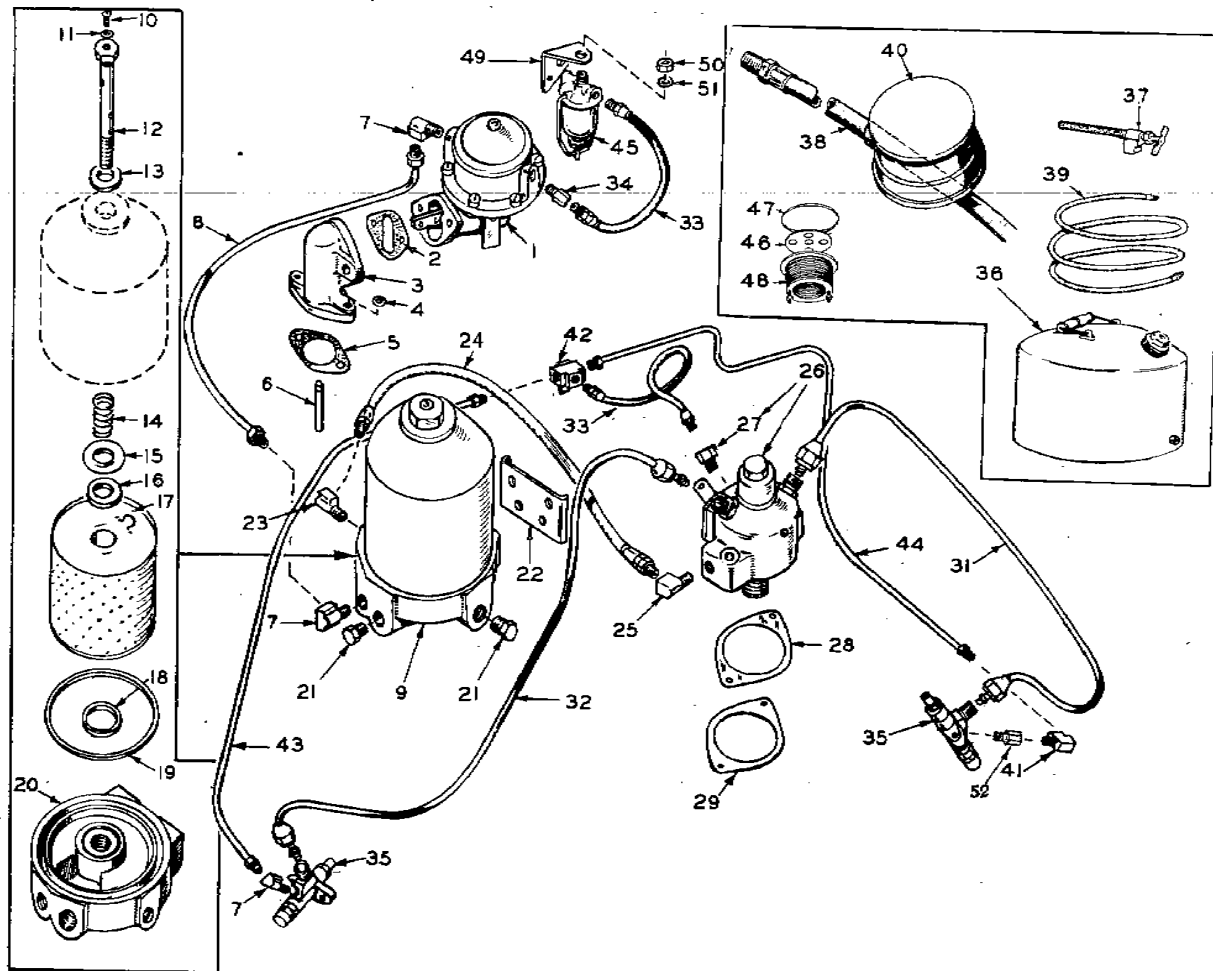


FIG. 9 - FUEL SYSTEM GROUP

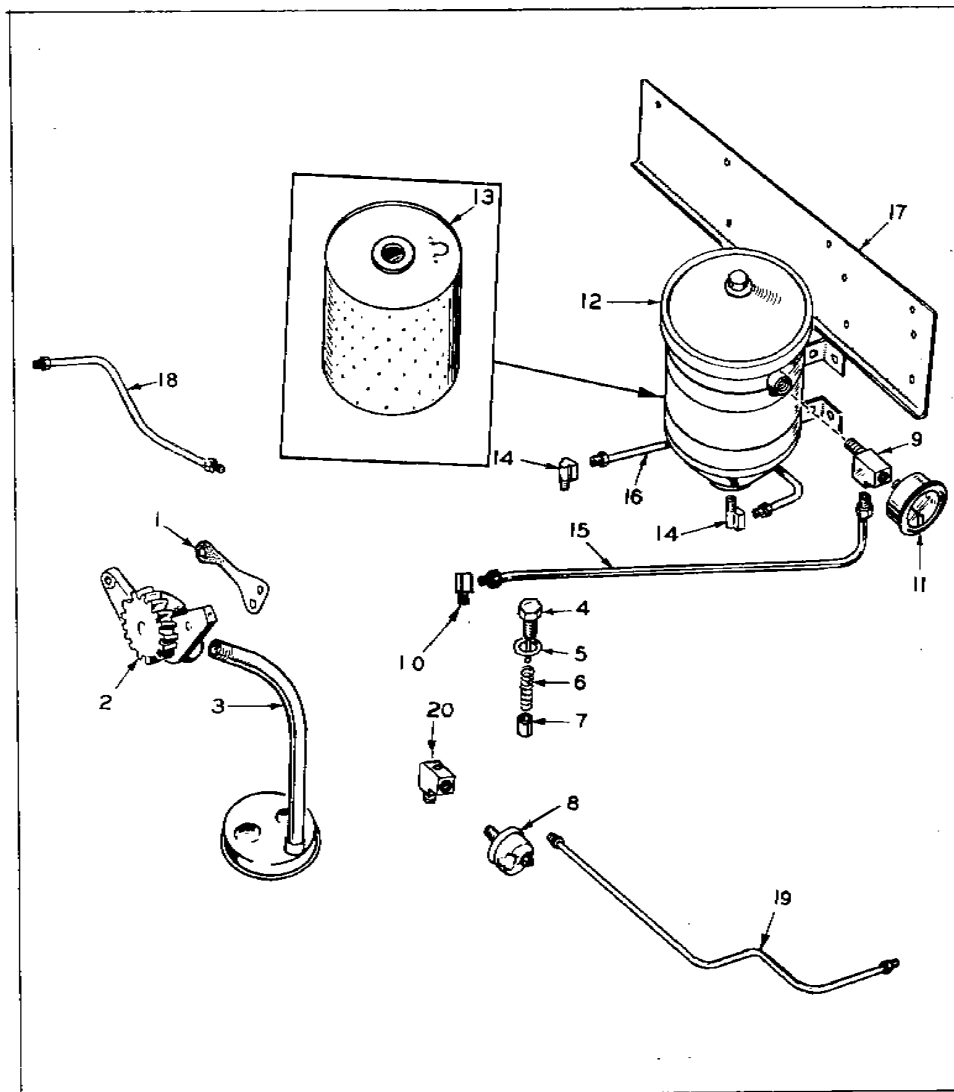


FIG. 10 - OIL SYSTEM GROUP

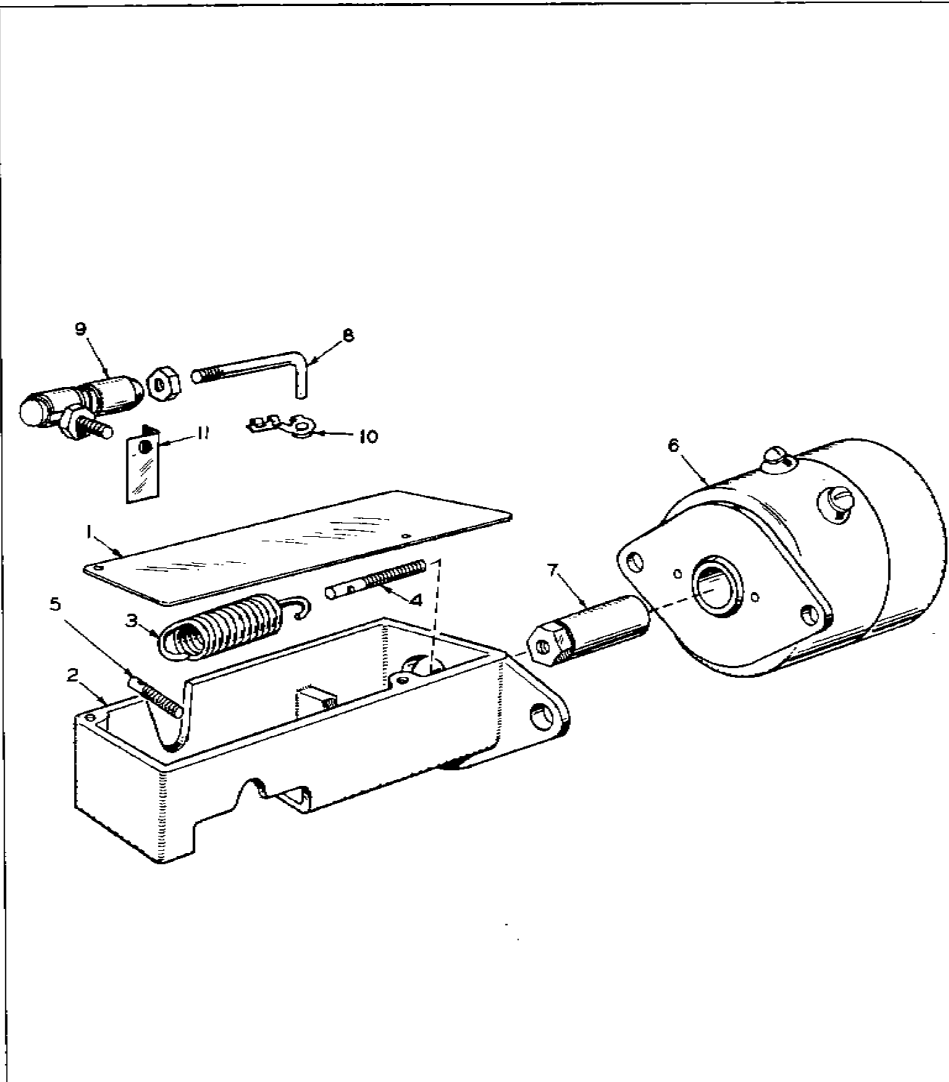


FIG. 11 - GOVERNOR AND SOLENOID GROUP

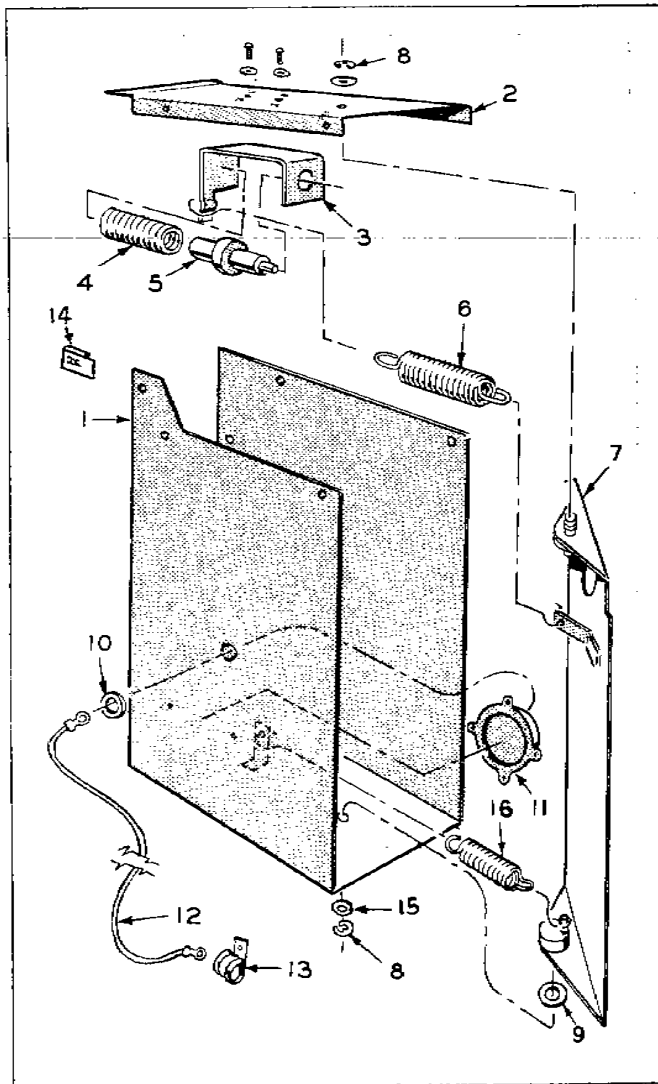


FIG. 12 - AIR SHUTTER GROUP

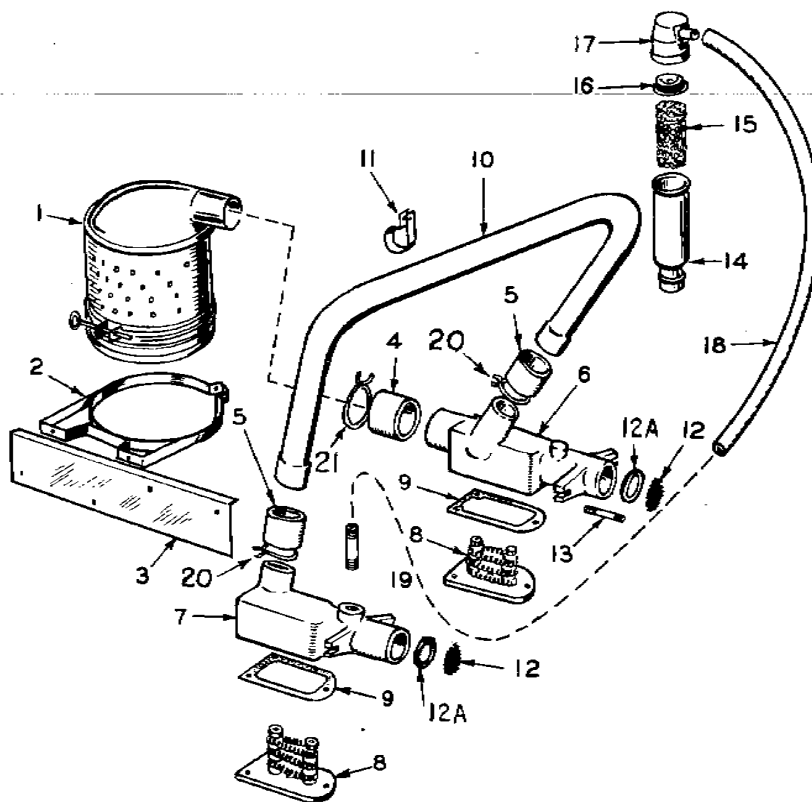


FIG. 13 - AIR CLEANER, HEATER AND MANIFOLD GROUP

Note - Starter component parts are listed but are not illustrated.

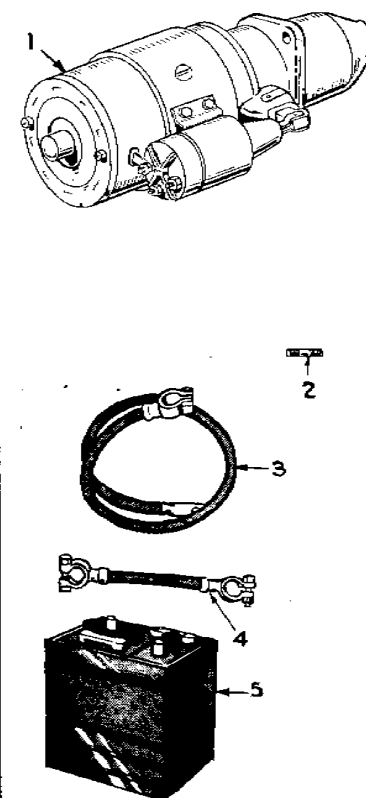


FIG. 14 - STARTING MOTOR GROUP

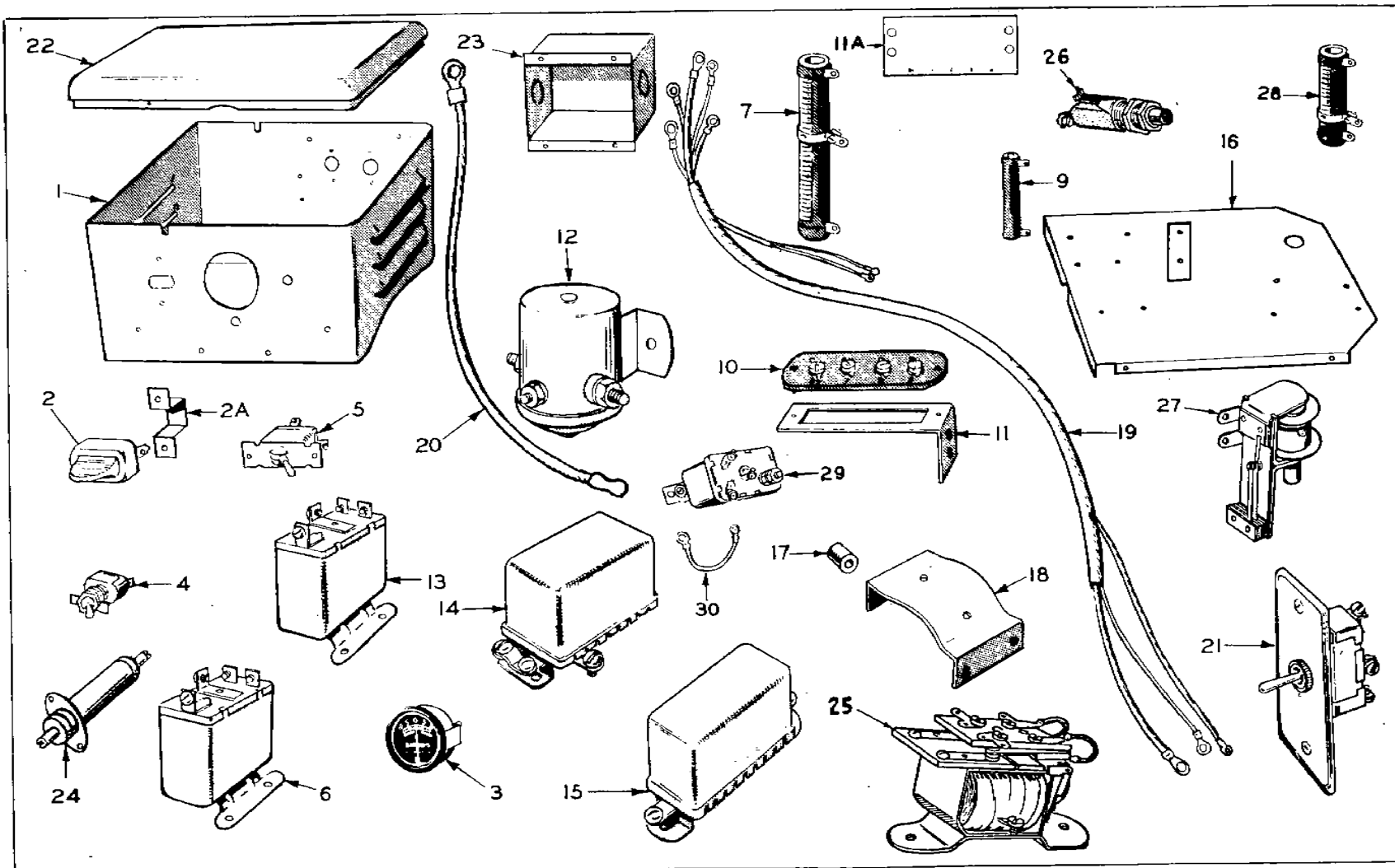


FIG. 15 - CONTROL PANEL GROUP

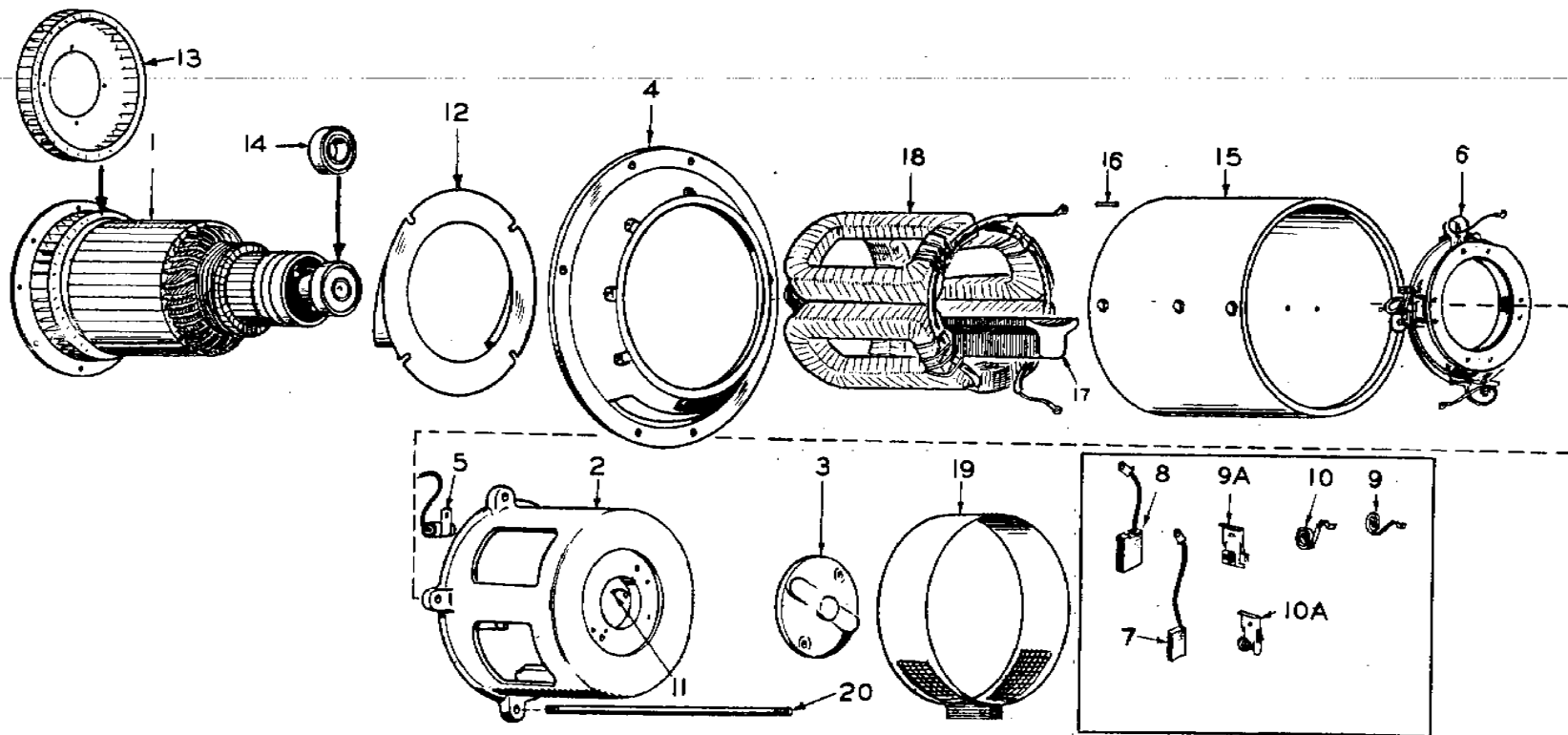


FIG. 16 - GENERATOR GROUP

| REF. NO. | PART NO. | QUANT. USED | DESCRIPTION |
|-------------|-------------|----------------|-------------|
|-------------|-------------|----------------|-------------|

FIG. 1 - CRANKCASE, OIL BASE AND GEAR COVER GROUP

| | | | |
|----|----------|---|---|
| 1 | 101A310 | 1 | Crankcase, Replacement - Includes Camshaft Sleeve Bearing, Main Bearings, Rear Bearing Plate and Plugs - Less Studs, Oil Seal, Camshaft Ball Bearing. |
| 2 | 510-19 | 1 | Bearing, Camshaft - Front - Ball Type (Listed also with Camshaft Group). |
| 3 | 101A367 | 1 | Bearing, Camshaft - Rear - Sleeve Type - Precision - Replaces 101A50. |
| 4 | 101C268 | 1 | Plate, Rear Main Bearing - Less Bearing and Lock Pin. |
| 5 | 101K341 | 2 | Bearing Kit, Front and Rear Main - Includes Thrust Washer and 2 Lock Pins - Precision type - Bronzed Faced - Specify: Standard Size, .002", .010", .020" or .030" Undersize - (Replaces Kit 101K220, Beginning Spec C). |
| 6 | 516A72 | 2 | Pin, Lock - Main Bearing. |
| 7 | 505-274 | 4 | Plug, Pipe - 1/8 - Countersunk Head. |
| 8 | 517-48 | 1 | Plug, Expansion - Rear Camshaft Bearing Opening. |
| 9 | 101K116 | 1 | Gasket Kit, Rear Bearing Plate - Assorted Thickness. |
| 10 | 805-18 | 8 | Bolt, Place - Rear Bearing Plate - 3/8-16 x 1". |
| 11 | 509P64 | 1 | Seal, Oil - Rear Bearing Plate. |
| 12 | 110D1151 | 1 | Cylinder, R.H. - #2 Cylinder. |
| 13 | 110D1047 | 1 | Cylinder, L.H. - #1 Cylinder. |
| 14 | 110K1136 | 2 | Gasket Kit, Cylinder Base. |
| 15 | 123A437 | 1 | Tube, Oil Fill. |
| 16 | 123A582 | 1 | Indicator, Oil Level. |
| 17 | 123A191 | 1 | Gasket, Oil Level Indicator. |
| 18 | 102E415 | 1 | Base, Oil. |
| 19 | 102B215 | 1 | Gasket, Oil Base. |
| 20 | 505-51 | 1 | Elbow, Pipe - 3/4". |
| 21 | 505-268 | 1 | Nipple, Pipe - 3/4 x 9". |
| 22 | 505-29 | 1 | Coupling, Pipe - 3/4". |
| 23 | 505-130 | 1 | Plug, Pipe - 3/4". |
| 24 | 103A203 | 1 | Cover Assembly, Gear - Includes parts marked ▲. |
| 25 | 150A720 | 1 | ▲Arm and Shaft, Governor. |
| 26 | 150A620 | 1 | ▲Yoke, Governor - Includes Retainer Ring. |
| 27 | 526-140 | 1 | ▲Washer, Flat - Yoke Spacing. |
| 28 | 518-129 | 1 | ▲Ring, Retainer "E" - Yoke. |

| REF. NO. | PART NO. | QUANT. USED | DESCRIPTION |
|-------------|-------------|----------------|-------------|
|-------------|-------------|----------------|-------------|

FIG. 1 - CRANKCASE, OIL BASE AND GEAR COVER GROUP (Cont.)

| | | | |
|----|---------|---|---|
| 29 | 509P8 | 1 | ▲Seal, Oil - Governor Shaft. |
| 30 | 510P13 | 1 | ▲Bearing, Needle - Governor Shaft (Large). |
| 31 | 150A229 | 1 | ▲Collar, Governor Shaft. |
| 32 | 815-154 | 1 | ▲Screw, Set - Socket Head - #10-32 x 3/16" - Governor Shaft Collar. |
| 33 | 510A8 | 1 | ▲Bearing Needle - Governor Shaft (Small). |
| 34 | 510P14 | 1 | ▲Ball, Bearing - Governor Shaft. |
| 35 | 516-130 | 1 | ▲Pin, Roll - 3/16 x 7/8" - Governor Cup Stop. |
| 36 | 509-19 | 1 | ▲Seal, Oil. |
| 37 | 103B36 | 1 | Gasket, Gear Cover. |

▲ - Parts contained in Gear Cover Assembly.

FIG. 2 - CAMSHAFT GROUP

| | | | |
|----|---------|----|--|
| 1 | 150A78 | 1 | Ring, Snap - Camshaft Center Pin. |
| 2 | 150B612 | 1 | Cup, Governor. |
| 3 | 510P15 | 10 | Ball, Governor. |
| 4 | 150B85 | 1 | Spacer, Governor Ball. |
| 5 | 150A77 | 1 | Plate, Governor Ball. |
| 6 | 105-184 | 1 | Gear Set, Timing - Includes Cam and Crank Gears (Listed also in Crankshaft Group). |
| 7 | 526A162 | 1 | Washer, Camshaft Thrust. |
| 8 | 526A163 | 1 | Washer, Camshaft Gear Spacing. |
| 9 | 510-19 | 1 | Bearing, Ball - Camshaft Front (Listed also in Crankcase Group). |
| 10 | 147-99 | 1 | Gear Set, Injection Pump. |
| 11 | 515-1 | 2 | Key, Gear. |

| REF. NO. | PART NO. | QUANT. USED | DESCRIPTION |
|-------------|-------------|----------------|-------------|
|-------------|-------------|----------------|-------------|

FIG. 2 - CAMSHAFT GROUP (Cont.)

| | | | |
|----|---------|---|--|
| 12 | 105-185 | 1 | Camshaft - Includes Center Pin. |
| 13 | 150A75 | 1 | Pin, Camshaft Center. |
| 14 | 115A114 | 1 | Tappet. |
| 15 | 526A157 | 1 | Washer, Thrust - Driven Gear to Crankcase. |
| 16 | 518-174 | 1 | Ring, Internal Retaining - Driven Gear to Crankcase. |

FIG. 3 - CRANKSHAFT AND FLYWHEEL GROUP

| | | | |
|----|---------|---|---|
| 1 | 134C848 | 1 | Wheel, Blower. |
| 2 | 104B252 | 1 | Dog, Crank. |
| 3 | 800-75 | 1 | Screw, Blower Wheel and Crank Dog - 7/16-14 x 2". |
| 4 | 134C845 | 1 | Hub, Blower Wheel. |
| 5 | 518-16 | 1 | Ring, Snap - Crankshaft Gear Retaining. |
| 6 | 104A95 | 1 | Washer, Crankshaft Gear Retaining. |
| 7 | 105-184 | 1 | Gear Set - Timing - Includes Cam and Crank Gears - Listed also in Camshaft Group. |
| 8 | 515-1 | 1 | Key, Crankshaft Gear. |
| 9 | 104D172 | 1 | Crankshaft. |
| 10 | 515-90 | 1 | Key, Flywheel. |
| 11 | 104-137 | 1 | Gear, Ring. |
| 12 | 104B404 | 1 | Flywheel - Includes Ring Gear (Replaces #104D251). |
| 13 | 104A160 | 1 | Washer, Flywheel - Flat. |
| 14 | 800-73 | 1 | Screw, Flywheel - 7/16-14 x 1-1/2". |
| 15 | 516-116 | 2 | Pin, Roll - Blower Wheel Hub. |
| 16 | 192B29 | 1 | Crank, Hand. |

| REF. NO. | PART NO. | QUANT. USED | DESCRIPTION |
|---|-------------|----------------|--|
| FIG 4 - PISTON AND CONNECTING ROD GROUP | | | |
| 1 | 113-91 | 2 | Ring Set, Piston - Includes (1) #113A43, (2) #113A15, and (1) #113A49 - Specify: Standard or, .010", .020", .030", .040" Oversize - (Note: #113K55 will work). |
| 2 | 112-82 | 2 | Piston and Pin Assembly - Specify: Standard or, .010", .020", .030", or .040" Oversize. |
| 3 | 112A16 | 2 | Pin, Piston - Specify: Standard or .002" Oversize. |
| 4 | 112A19 | 4 | Retainer, Piston Pin. |
| 5 | 114B52 | 2 | Rod, Connecting - Includes Bushing and Bearings - Specify: Standard or, .002", .010", .020", .030" Undersize. |
| 6 | 805-20 | 4 | Bolt, Place - Connecting Rod - 3/8-24 x 1-1/2". |
| 7 | 113A43 | 2 | Ring, Top Compression - Order 113-91. |
| 8 | 113A15 | 4 | Ring, Compression - Lands 2 and 3 - Order 113-91. |
| 9 | 113A49 | 2 | Ring, Oil Control - Order 113-91. |
| 10 | 114A54 | 4 | Bushing, Connecting Rod - To Wrist Pin - Semi-Finished. |
| 11 | 114B53 | 4 | Bearing Half, Connecting Rod - Precision Type - Specify: Standard or, .002", .010", .020", or .030" Undersize. |

FIG 5 - CYLINDER HEAD, VALVE AND ROCKER BOX GROUP

| | | | |
|---|----------|---|--|
| 1 | 110A1140 | 1 | Head Assembly, Cylinder - Includes Valve Guides and Seats - |
| | 110A1063 | 1 | Left Hand or #1 Cylinder. |
| 2 | 110A1043 | 4 | Right Hand or #2 Cylinder. |
| 3 | 110A343 | 2 | Guide, Valve. |
| 4 | 110A1048 | 2 | Seat, Valve Insert - Exhaust - Specify: Standard or .005", .010", or .025" Oversize. |
| 5 | 520A549 | 8 | Gasket, Cylinder Head - Copper. |
| 6 | 110A419 | 2 | Stud, Cylinder - 1/2 x 7-7/8". |
| 7 | 147A44 | 2 | Gasket, Nozzle Heat Shield to Head - Copper - 1/32" Thick. |
| 8 | 147A43 | 2 | Shield, Nozzle Heat - Steel (Approximately 3/16" Thick). |
| | | | Gasket, Nozzle - Steelbestos. |

| REF. NO. | PART NO. | QUANT. USED | DESCRIPTION |
|-------------|-------------|----------------|-------------|
|-------------|-------------|----------------|-------------|

FIG. 5 - CYLINDER HEAD, VALVE AND ROCKER BOX GROUP (Cont.)

| | | | |
|-----|----------|----|---|
| - 9 | 147B78 | 2 | Adapter, Nozzle. |
| 10 | 147B81 | 2 | Nozzle and Holder Assembly. |
| 11 | 147-16 | 2 | Nozzle only - Component of Nozzle and Holder Assembly. |
| 12 | 147-12 | 2 | Gasket, Nozzle Holder - Copper - Component of Nozzle and Holder Assembly. |
| 13 | 147-33 | 4 | Gasket, Nozzle Holder Cap - Copper - 1/16" Thick. |
| 14 | 110A236 | 4 | Spring, Valve. |
| 15 | 110A501 | 4 | Lock, Valve Spring Retainer. |
| 16 | 110A1038 | 4 | Washer, Valve Spring Retainer. |
| 17 | 110A1041 | 2 | Valve, Exhaust. |
| 18 | 110A1042 | 2 | Valve, Intake. |
| 19 | 115A103 | 4 | Rod, Push - Valve. |
| 20 | 115B96 | 4 | Tappet, Valve. |
| 21 | 115A102 | 4 | Shield, Push Rod. |
| 22 | 509P18 | 8 | Seal, "O" Ring - 7/8" O.D. x 3/32" Diameter - Push Rod Shield. |
| 23 | | | Box, Rocker. |
| | 115D97 | 2 | Spec "A" Models only (Replaces #115D120). |
| | 115D119 | 2 | Begin Spec "B". |
| 24 | 115A104 | 2 | Gasket, Rocker Box. |
| 25 | 115A109 | 2 | Gasket, Rocker Box Cover. |
| 26 | 115C100 | 2 | Cover, Rocker Box. |
| 27 | 526-65 | 10 | Washer, Flat - Copper (4) Rocker Box Cover, (6) Rocker Box Mounting. |
| 28 | 520A554 | 4 | Stud, Rocker Box Cover - 5/16 x 3-9/16". |
| 29 | 115A108 | 4 | Arm, Rocker - Intake or Exhaust - Includes Needle Bearing and Screw. |
| 30 | 510-51 | 4 | Bearing, Needle - Rocker Arm. |
| 32 | 115A91 | 2 | Screw, Rocker Arm to Push Rod Adjustment (Valve Clearance) Self Locking. |
| 33 | 115A106 | 2 | Shaft, Rocker Arm. |
| 34 | 115A113 | 2 | Bracket, Rocker Arm Shaft Mounting. |
| 35 | 518-7 | 4 | Ring, Retaining - External - Rocker Arm to Shaft. |
| 36 | 115A105 | 4 | Washer, Rocker Arm. |
| 37 | 502-2 | 2 | Elbow, Inverted Male - 400 x 4 - Rocker Box Oil Drain. |
| 38 | 333A37 | 2 | Plug, Glow - With Gasket. |
| 39 | 110A546 | 2 | Gasket, Glow Plug. |
| 40 | 110A1158 | 4 | Spacer, Valve Spring - Begin Spec "B". |

| REF. NO. | PART NO. | QUANT. USED | DESCRIPTION |
|-------------|-------------|----------------|-------------|
|-------------|-------------|----------------|-------------|

FIG. 5 - CYLINDER HEAD, VALVE AND ROCKER BOX GROUP (Cont.)

| | | |
|---------|---|---|
| 869-2 | 4 | Nut, Hex Cap - 5/16-24 - Rocker Box Cover. |
| 860-15 | 4 | Nut, Hex - 5/16-18 - Rocker Box. |
| 526A35 | 8 | Washer, Flat - Cylinder Head. |
| 110A707 | 8 | Nut, Hex - 1/2-20, Hardened - Cylinder Head. |
| 800-28 | 2 | Screw, Hex Head Cap - 5/16-18 x 1" - Rocker Box to Head. |
| 800-34 | 4 | Screw, Hex Head Cap - 5/16-18 x 2-1/4" - Nozzle Holder. |
| 800-53 | 4 | Screw, Hex Head Cap - 3/8-16 x 1-3/4" - Rocker Arm Shaft Bracket. |
| 850-45 | 4 | Washer, Lock - 5/16" - Nozzle Holder. |
| 850-50 | 4 | Washer, Lock - 3/8" - Rocker Arm Shaft Bracket. |

FIG. 6 - MUFFLER AND EXHAUST GROUP

| | | | |
|----|---------|---|---|
| 1 | 154C496 | 1 | Manifold, Exhaust - Right Hand, #2 Cylinder - "L" Shaped. |
| 2 | 154C497 | 1 | Manifold, Exhaust - Left Hand, #1 Cylinder - "L" Shaped. |
| 3 | 154C498 | 1 | Manifold, Exhaust Crossover. |
| 4 | 154A460 | 2 | Gasket, Exhaust Manifold to Head. |
| 5 | 154A133 | 1 | Gasket, Exhaust Flange. |
| 6 | 155A170 | 1 | Flange, Exhaust. |
| 7 | 520A553 | 4 | Stud, Exhaust Manifold to Head. |
| 8 | 155B492 | 1 | Tube, Flexible Exhaust. |
| 9 | 155B330 | 1 | Muffler, Exhaust. |
| 10 | 505-31 | 1 | Coupling, Pipe. |
| 11 | 155A343 | 2 | Gasket, Exhaust Crossover. |

| REF. NO. | PART NO. | QUANT. USED | DESCRIPTION |
|-------------------------------------|-------------|----------------|---|
| FIG. 7 - HOUSING AND MOUNTING GROUP | | | |
| 1 | 134D923 | 1 | Plate, Blower Cover. |
| 2 | 134D846 | 1 | Scroll, Blower Housing. |
| 3 | 134E866 | 1 | Housing, Plenum Chamber. |
| 4 | 134C922 | 1 | Cover, Cylinder Head Front - Left Hand or #1 Cylinder. |
| 5 | 134C921 | 1 | Cover, Cylinder Head Front - Right Hand or #2 Cylinder. |
| 6 | 134D858 | 1 | Shroud, Cylinder Bottom - Left Hand or #1 Cylinder. |
| 7 | 134D861 | 1 | Shroud, Cylinder Bottom - Right Hand or #2 Cylinder. |
| 8 | 134C859 | 1 | Shroud, Cylinder Top - Left Hand or #1 Cylinder. |
| 9 | 134D860 | 1 | Shroud, Cylinder Top - Right Hand or #2 Cylinder. |
| 10 | 134B924 | 1 | Cover, Cylinder Head Top - Left Hand or #1 Cylinder. |
| 11 | 134B928 | 1 | Cover, Cylinder Head Top - Right Hand or #2 Cylinder. |
| 12 | 405D1168 | 1 | Hood, Engine. |
| 13 | 101D147 | 1 | Housing, Flywheel. |
| 14 | 403A576 | 1 | Bolt, Eye - Lifting. |
| 15 | 403B550 | 1 | Angle, Mounting Base - Left Hand. |
| 16 | 403B549 | 1 | Angle, Mounting Base - Right Hand. |
| 17 | 403B548 | 1 | Base, Cross Member Mounting. |
| 19 | 406-105 | 2 | Fastener, Hood. |
| 20 | 405A1170 | 2 | Clip, Hood Fastener. |
| 21 | 402A216 | 4 | Cushion Assembly, Mounting. |
| 22 | 402A36 | 8 | Cushion, Mounting. |
| 23 | 402A72 | 4 | Bushing, Spacer. |
| 24 | 402A94 | 4 | Cup, Mounting Alignment. |

| REF. NO. | PART NO. | QUANT. USED | DESCRIPTION |
|-------------|-------------|----------------|-------------|
|-------------|-------------|----------------|-------------|

FIG. 8 - FUEL TRANSFER PUMP PARTS GROUP

NOTE: - AC part numbers are prefixed by "AC".

| | | | |
|----|-------------|---|---|
| | 149C734 | 1 | Pump, Fuel Transfer (AC Mfr., modified by ONAN). |
| | 149P762 | 1 | Kit, Fuel Pump Repair (AC #5622415) Contains parts marked (†) and (††). |
| | 149P761 | 1 | † Kit, Diaphragm (AC #5622414). |
| 1 | | 1 | †† Diaphragm and Pull Rod Assembly. } |
| 2 | | 1 | †† Diaphragm, Pulsator. } |
| 3 | | 2 | †† Valve, Assembly. } |
| 4 | | 2 | †† Gasket, Valve. } |
| 5 | 149A277 | 1 | †† Gasket, Fuel Transfer Pump Mounting (Equal to AC #837329). |
| 6 | 149P577 | 1 | † Bushing, Rocker Arm Pin (AC #1521864). |
| 7 | 149P579 | 1 | † Link (AC #1521863). |
| 8 | 149P578 | 1 | † Pin, Rocker Arm (AC #1521640). |
| 9 | (AC)1538217 | 1 | † Spring, Diaphragm. |
| 10 | 149P580 | 1 | † Spring, Rocker Arm (AC #1522091). |
| 11 | (AC)5593518 | 1 | Body and Priming Lever Assembly - Existing vent hole must be plugged! |
| 12 | (AC)5593544 | 1 | Cover and Valve Assembly - Includes Valves and Valve Gaskets. |
| 13 | 149P581 | 1 | Arm, Rocker (AC #1521862). |
| 14 | (AC)5593542 | 1 | Plate, Pulsator Cover. |
| 15 | (AC)855493 | 6 | Screw, Top Cover. |
| 16 | (AC)456935 | 1 | Screw, Pulsator Cover. |
| 17 | (AC)855064 | 6 | Lockwasher, Cover Screw. |
| 18 | (AC)456416 | 1 | Lockwasher, Pulsator Cover Screw. |

† - Parts contained in Fuel Pump Repair Kit #149P762.

†† - Parts contained in Diaphragm Kit #149P761 and also in Fuel Pump Repair Kit #149P762.

| REF. NO. | PART NO. | QUANT. USED | DESCRIPTION |
|----------------------------|-------------|----------------|---|
| FIG. 9 - FUEL SYSTEM GROUP | | | |
| 1 | 149C734 | 1 | Pump, Fuel Transfer - See separate group for component parts. |
| 2 | 149A277 | 1 | Gasket, Fuel Transfer Pump. |
| 3 | 149C699 | 1 | Adapter, Fuel Transfer Pump. |
| 4 | 526-65 | 2 | Washer, Flat Copper - Fuel Transfer Pump Adapter. |
| 5 | 149A702 | 1 | Gasket, Fuel Transfer Pump Adapter. |
| 6 | 149A701 | 1 | Rod, Fuel Transfer Pump Push. |
| 7 | 502-2 | 3 | Elbow, Inverted Male - Fuel Pump Outlet, Fuel Filter Inlet, Nozzle. |
| 8 | 149B742 | 1 | Line, Fuel - Transfer Pump to Filter. |
| 9 | 149B448 | 1 | Filter Assembly, Fuel. |
| 10 | 815-179 | 1 | Screw, Hex Head - #10-32 x 3/8" - Fuel Filter Bleeding. |
| 11 | 526-71 | 1 | Washer, Filter Bleed Screw - Copper. |
| 12 | 149A452 | 1 | Bolt, Fuel Filter. |
| 13 | 149P531 | 1 | Gasket, Assembly Screw to Body - Filter. |
| 14 | (Fram)10074 | 1 | Spring, Cartridge Securing - Filter. |
| 15 | 122-48 | 1 | Washer, Cartridge Securing Spring Faced - Secondary Filter. |
| 16 | 149P495 | 1 | Gasket, Cartridge to Spring - Filter (Note: Must seal against Spring). |
| 17 | 149P428 | 1 | Cartridge only, Fuel Filter - order Gaskets Separately. |
| 18 | 149P455 | 1 | Gasket, Cartridge to Base - Filter. |
| 19 | 149P456 | 1 | Gasket, Body to Base - Filter. |
| 20 | 149C451 | 1 | Base only, Fuel Filter. |
| 21 | 505-57 | 2 | Plug, Pipe - 1/8" Square Head - Filter Drain and unused outlet. |
| 22 | 149A729 | 1 | Bracket, Fuel Filter Mounting. |
| 23 | 502-20 | 1 | Elbow, Street - Fuel Filter Outlet. |
| 24 | 501A2 | 1 | Line, Flexible Fuel - Fuel Filter to Injection Pump (Replaces #501A1). |
| 25 | 502-41 | 1 | Elbow, Inverted Male - 434 x 4 - Injection Pump Inlet. |
| 26 | 147C91 | 1 | Pump Assembly, Injection. |
| 27 | 147A96 | 1 | Fitting, Injection Pump Bleed. |
| 28 | 147A89 | 4 or As Req. | Shim, Injection Pump Mounting - .005 Thick. |
| 29 | 147A103 | 1 | Shim, Injection Pump Mounting - .020 Thick. |
| 31 | 149C732 | 1 | Line, Fuel Injection - Right Hand, #2 Cylinder - Includes Rings and Nuts. |
| 32 | 149C731 | 1 | Line, Fuel Injection - Left Hand, #1 Cylinder - Includes Rings and Nuts. |

| REF. NO. | PART NO. | QUANT. USED | DESCRIPTION |
|------------------------------------|-------------|----------------|--|
| FIG. 9 - FUEL SYSTEM GROUP (Cont.) | | | |
| 33 | 501A3 | 2 | Line, Flexible Fuel - 9" - Primary Filter to Transfer Pump and Injection Pump Fuel Return. |
| 34 | 502-65 | 1 | Elbow, Inverted Male - 45° - 352 x 4 - Fuel Transfer Pump Inlet. |
| 35 | | | Nozzle and Holder Assembly - Refer to Cylinder Head Group. |
| 36 | 415A126 | 1 | Tank Assembly, Fuel. |
| 37 | 504A16 | 1 | Valve Assembly, Fuel Tank - Straight, Inverted. |
| 38 | 501A27 | 1 | Line, Flexible - Nozzle to Tank - (Works for 501A81). |
| 39 | 501A9 | 1 | Line, Flexible - Tank to Filter. |
| 40 | 415B124 | 1 | Cap, Rain - Fuel Tank - With provision for return line. |
| 41 | 502-1 | 1 | Tee, Adapter - 550 x 4 - Nozzle, Fuel Return. |
| 42 | 502-224 | 1 | Tee, Inverted - Includes Bracket - Fuel Return Line Junction. |
| 43 | 149C754 | 1 | Line, Fuel Return - L.H., #1 Nozzle to Injection Pump. |
| 44 | 149C755 | 1 | Line, Fuel Return - R.H., #2 Nozzle to Injection Pump. |
| 45 | 149B426 | 1 | Filter Assembly, Primary Fuel - Complete. |
| 46 | 149P494 | 1 | Gasket, Fiber - Primary Filter Element to Cover. |
| 47 | 149P439 | 1 | Gasket, Neoprene - Primary Filter Bowl to Cover. |
| 48 | 149P438 | 1 | Element, Primary Filter - Brass Disc Permanent Type - Order Gaskets Separately. |
| 49 | 149A757 | 1 | Bracket, Primary Fuel Filter. |
| 50 | 868-7 | 1 | Nut, Hex Jam - 5/8"-18 - Mounting Primary Filter. |
| 51 | 854-28 | 1 | Washer, Internal Tooth - 5/8" - Mounting Primary Filter. |
| 52 | 502-175 | 1 | Adapter, 1/8 Pipe - Spaces Nozzle Return Line Tee Fitting. |
| FIG. 10 - OIL SYSTEM GROUP | | | |
| 1 | 120K161 | 1 | Gasket Kit, Oil Pump - Includes Mounting and Assembly Gaskets. |
| 2 | 120A279 | 1 | Pump Assembly, Oil - Sold only as a unit. |
| 3 | 120B275 | 1 | Cup, Oil Intake. |
| 4 | 120A224 | 1 | Guide, Oil By-pass Cap and Spring. |
| 5 | 526-153 | 1 | Washer, Oil By-pass Relief Cap - Copper. |
| 6 | 120A221 | 1 | Spring, Oil By-pass. |
| 7 | 120A222 | 1 | Piston, Oil By-pass. |
| 8 | 309P64 | 1 | Switch, Oil Pressure. |
| 9 | 502-1 | 1 | Tee, Oil Pressure Gauge. |
| 10 | 502-65 | 1 | Elbow, Street - 352 x 4 - Oil Filter Line. |

| REF. NO. | PART NO. | QUANT. USED | DESCRIPTION |
|-------------|-------------|----------------|-------------|
|-------------|-------------|----------------|-------------|

FIG. 10 - OIL SYSTEM GROUP (Cont.)

| | | | |
|----|---------|---|---|
| 11 | 193-6 | 1 | Gauge, Oil Pressure. |
| 12 | 122C56 | 1 | Filter, Oil - Includes Cartridge. |
| 13 | 122-37 | 1 | Cartridge, Oil Filter Replacement - Includes Gasket. |
| 14 | 502-2 | 3 | Elbow, Inverted Male - 400 x 4 - Oil Filter Lines. |
| 15 | 122A172 | 1 | Line, Oil Filter Pressure. |
| 16 | 122A171 | 1 | Line, Oil Filter Return. |
| 17 | 122B168 | 1 | Bracket, Oil Filter Mounting. |
| 18 | 120B503 | 1 | Line, Rocker Box Oil Drain - Left Hand, #1 Cylinder. |
| 19 | 120B504 | 1 | Line, Rocker Box Oil Drain - Right Hand, #2 Cylinder. |
| 20 | 502-58 | 1 | Tee, Street - 3750 x 2 - Oil Pressure Switch. |

FIG. 11 - GOVERNOR AND SOLENOID GROUP

| | | | |
|----|---------|---|--|
| 1 | 150A722 | 1 | Cover, Governor Spring Mounting Box. |
| 2 | 150C721 | 1 | Box, Governor Spring Mounting. |
| 3 | 150A731 | 1 | Spring, Governor. |
| 4 | 150A213 | 1 | Stud, Governor Speed Adjusting (Replaces #150A96). |
| 5 | 150A146 | 1 | Stud, Governor Spring Sensitivity Adjusting. |
| 6 | 307B455 | 1 | Solenoid, Governor Spring. |
| 7 | 306A152 | 1 | Plunger, Solenoid. |
| 8 | 150A732 | 1 | Link, Governor. |
| 9 | 150A639 | 1 | Joint, Ball. |
| 10 | 518-6 | 1 | Clip, Rod End - Replaces 518-52, listed in error. |
| 11 | 150A727 | 1 | Bracket, Governor Stop. |

| REF. NO. | PART NO. | QUANT. USED | DESCRIPTION |
|-------------|-------------|----------------|-------------|
|-------------|-------------|----------------|-------------|

FIG. 12 - AIR SHUTTER GROUP

| | | | |
|----|----------|---|---|
| 1 | | | Box, Shutter. |
| | 134C937 | 1 | Prior to Spec C |
| | 134C1142 | 1 | Begin Spec C |
| 2 | | | Plate, Vernatherm Element Mounting. |
| | 134B938 | 1 | Prior to Spec C |
| | 134B1140 | 1 | Begin Spec C |
| 3 | 134B660 | 1 | Bracket, Vernatherm Element Mounting. |
| 4 | 134A656 | 1 | Spring, Vernatherm Element. |
| 5 | 309P85 | 1 | Element, Vernatherm. |
| 6 | 134A658 | 1 | Spring, Upper Shutter. |
| 7 | 134A940 | 1 | Shutter, Circulated Air Control. |
| 8 | 518P74 | 2 | Ring, External Retaining - Shutter Shaft. |
| 9 | 526-102 | 4 | Washer, Flat - Shutter Spacing. |
| 10 | 508A5 | 1 | Grommet, Rubber - For 5/16" Hole - Begin Spec B. |
| 11 | 309-2 | 1 | Switch, Air Temperature Cut-off - Begin Spec B. |
| 12 | 336A759 | 1 | Lead, Switch to Stop Circuit - Begin Spec B. |
| 13 | 332-49 | 1 | Clip, Tinnerman - Lead Securing - Begin Spec B. |
| 14 | 870-167 | 3 | Nut, Speed - Type J - Tinnerman - #10 - Air Shutter Box Mounting. |
| 15 | 134P1141 | 2 | Bushing, Nylined Flanged Snap-in (Begin Spec C). |
| 16 | 150A471 | 1 | Spring, Lower Shutter (Begin Spec C). |

FIG. 13 - AIR CLEANER, HEATER AND MANIFOLD GROUP

| | | | |
|---|---------|---|---|
| 1 | 140B500 | 1 | Cleaner, Air. |
| 2 | 140B519 | 1 | Band, Air Cleaner Mounting. |
| 3 | 140B520 | 1 | Bracket, Air Cleaner Mounting. |
| 4 | 503A330 | 1 | Hose, Air Cleaner - 2" i.d. x 1-5/8" long. |
| 5 | 503A329 | 2 | Hose, Air Intake - 1-3/4" i.d. x 2" long. |
| 6 | 140A517 | 1 | Adapter, Air Cleaner and Heater - r.h. - #2 Cylinder. |
| 7 | 154C553 | 1 | Adapter, Air Heater - l.h. - #1 Cylinder. |

| REF. NO. | PART NO. | QUANT. USED | DESCRIPTION |
|-------------|-------------|----------------|-------------|
|-------------|-------------|----------------|-------------|

FIG. 13 - AIR CLEANER, HEATER AND MANIFOLD GROUP (Cont.)

| | | | |
|-----|---------|---|---|
| 8 | 140B166 | 2 | Element, 12 Volt Air Heater. |
| 9 | 140A156 | 2 | Gasket, Air Heater Element. |
| 10 | 154D554 | 1 | Manifold, Crossover Intake. |
| 11 | 154A557 | 1 | Band, Intake Manifold. |
| 12 | 140A528 | 2 | Screen, Intake Manifold System to Head. |
| 12A | 154A460 | 2 | Gasket, Intake Manifold System to Head. |
| 13 | 520A553 | 4 | Stud, Intake Manifold System to Head. |
| 14 | 123A596 | 1 | Tube, Breather. |
| 15 | 123P452 | 1 | Baffle, Breather Tube. |
| 16 | 123A315 | 1 | Valve, Breather. |
| 17 | 123A458 | 1 | Cap, Breather. |
| 18 | 503-342 | 1 | Hose, Breather. |
| 19 | 505A325 | 1 | Nipple, Pipe Half - 1/8" - Breather. |
| 20 | 503-287 | 4 | Clamp, Hose - Crossover Manifold. |
| 21 | 503-142 | 2 | Clamp, Hose - Air Cleaner. |

FIG. 14 - STARTING MOTOR GROUP

| | | | |
|---|---------|---|--|
| 1 | | | Motor, 12 Volt Starting. |
| | 191B24 | 1 | Prior to Spec C - Autolite No. MBJ-4115 (See Breakdown, this section). |
| | 191C314 | 1 | Begin Spec C - Autolite No. MEO-6001 - Less Relay (See Breakdown, this Section). |
| 2 | 520A404 | 2 | Stud, Starting Motor. |
| 3 | 416A110 | 2 | Cable, Battery. |
| 4 | 416A4 | 1 | Cable, Battery Jumper. |
| 5 | 416P258 | 2 | Battery, Starting - 6 Volt (Not included with plant). |

| REF. NO. | PART NO. | QUANT. USED | DESCRIPTION |
|-------------|-------------|----------------|-------------|
|-------------|-------------|----------------|-------------|

PARTS LIST FOR STARTING MOTOR #191B24 (NOT ILLUSTRATED)

NOTE: Contact your Autolite dealer for starting motor parts

| | | |
|----------------|---|---|
| (AL)MAW-2030 | 1 | Armature Assembly - Includes Spacer #(AL)MAW-31. |
| (AL)MAW-24 | 1 | Band, Cover. |
| (AL)MP-41A | 1 | Bearing, Bronze - Pinion Housing. |
| (AL)MW-20A | 2 | *Bolt, Thru. |
| 191-17 | 1 | ●*Brush Set, Service - (AL)MAY-2012AS. |
| (AL)MAW-37 | 1 | *Bushing, Terminal Stud Insulator. |
| (AL)MAX-41 | 1 | Bushing, Yoke Pivot - Clutch. |
| (AL)MAX-42 | 1 | Bushing, Yoke Pivot - Clutch. |
| 191P121 | 1 | ●Clutch, Starter - Replaces (AL)MAY-3048. |
| (AL)MAY-3005BS | 1 | *Coil Assembly Package, Field - Includes parts marked (+). |
| (AL)MAY-1009A | 1 | +Coil, Field - Lower Left. |
| (AL)MAY-1008A | 1 | +Coil, Field - Lower Right. |
| (AL)MAY-1007F | 1 | +Coil, Field - Upper Left. |
| (AL)MAY-1010 | 1 | +Coil, Field - Upper Right |
| (AL)MAY-33 | 1 | *Connector, Field Connection. |
| (AL)MAX-64 | 2 | +Connector, Field Coil. |
| (AL)SS-116L | 1 | Connector - Switch Assembly. |
| (AL)SS-1128 | 1 | Core Assembly, Switch - Includes parts marked ▲. |
| (AL)SS-128 | 1 | ▲Core, Switch. |
| (AL)MAX-38 | 1 | Cover, Dust - Clutch Assembly. |
| (AL)MAD-110 | 1 | Felt, Commutator End Head. |
| (AL)MAY-2157 | 1 | Frame and Field Assembly - Includes parts marked (*). |
| (AL)MAX-37 | 1 | Gasket, Dust Cover - Clutch Assembly. |
| (AL)MAX-2002 | 1 | Head Assembly, Commutator End - Includes Felt #(AL)MAD-110. |
| (AL)PS-1094B | 1 | Housing Assembly, Pinion - Includes Bearing #(AL)MP-41A. |
| (AL)MAX-67 | 1 | *Insulation, Field Connection - Drive End. |

+- Included in Coil Assembly Package #(AL)MAY-3005BS.

*- Included in Frame and Field Assembly #(AL)MAY-2157.

▲- Included in Switch Core Assembly #(AL)SS-1128.

●- Also available from ONAN.

| REF. NO. | PART NO. | QUANT. USED | DESCRIPTION |
|-------------|-------------|----------------|-------------|
|-------------|-------------|----------------|-------------|

PARTS LIST FOR STARTING MOTOR #191B24 (NOT ILLUSTRATED (Cont.))

| | | |
|--------------|---|--|
| (AL)MAB-30 | 1 | *Insulation, Field Connection - Commutator End. |
| (AL)12X-201 | 2 | Lockwasher, Switch Terminal - 3/8". |
| (AL)12X-201 | 2 | *Lockwasher, Terminal Stud - 3/8". |
| (AL)12X-199 | 2 | *Lockwasher, Thru Bolt - 1/4". |
| (AL)12X-1014 | 1 | Lockwasher, Yoke Pivot - 5/16" - Clutch Assembly. |
| (AL)8X-794 | 1 | Nut, Cover Band, Square #10-32. |
| 860-17 | 2 | Nut, Switch Terminal - Hex 3/8-16 (AL)X-830. |
| 860-17 | 2 | *Nut, Terminal Stud - Hex 3/8"-16 (AL)X-830. |
| 862-2 | 1 | Nut, Yoke Pivot - Hex 5/16"-18 - Clutch Assembly (AL)8X-147. |
| (AL)X-401 | 1 | Pin, Cotter - Link Pin - 1/16" x 3/8" - Clutch Assembly. |
| (AL)MN-21 | 2 | *Pin, Dowel. |
| (AL)MCH-76 | 1 | Pin, Link - Clutch Assembly. |
| (AL)MAX-39 | 1 | Plate, Dust - Clutch Assembly. |
| (AL)8X-61 | 2 | *Screw, Brush Ground Flat Head - #10-32 x 7/16" |
| (AL)8X-714 | 1 | Screw, Cover Band - Round Head - #10-32 x 1/2". |
| 813-97 | 4 | Screw, Dust Cover - Round Head - #10-32 x 3/8" - Clutch Assembly (AL)8X-311. |
| (AL)SS-59 | 1 | ▲Screw, Link - Switch Assembly. |
| (AL)GK-38 | 4 | *Screw, Poleshoe. |
| (AL)X-3002 | 4 | Screw, Switch Mounting - Hex - 1/4-20 x 3/8". |
| (AL)X-97 | 1 | Screw, Yoke Pivot - Hex - 5/16-18 x 3-1/4 - Clutch Assembly. |
| (AL)MAW-31 | 1 | Spacer, Armature Shaft. |
| 191-19 | 4 | ●Spring, Brush - Commutator End Head (AL)MZ-19. |
| (AL)SS-61 | 1 | ▲Spring, Switch Core. |
| (AL)MAX-46 | 1 | Spring, Yoke - Clutch Assembly. |
| (AL)MAY-28 | 1 | *Stud, Terminal. |
| 307-98 | 1 | ●Switch, Solenoid Starting (AL)SS-4204. |
| (AL)MAD-96 | 1 | Washer, Armature Thrust - Commutator End. |
| (AL)MU-54A | | Washer, Armature Thrust - Commutator End - 1/64" Thick. |

* - Included in Frame and Field Assembly #(AL)MAY-2157.

▲ - Included in Switch Core Assembly #(AL)SS-1128.

● - Also available from ONAN.

| REF. NO. | PART NO. | QUANT. USED | DESCRIPTION |
|-------------|-------------|----------------|-------------|
|-------------|-------------|----------------|-------------|

PARTS LIST FOR STARTING MOTOR #191B24 (NOT ILLUSTRATED) Cont.)

| | | |
|--------------|---------|---|
| (AL)MU-54B | As Req. | Washer, Armature Thrust - Commutator End - 3/64" Thick. |
| 854-10 | 4 | Washer, Dust Cover - Clutch Assembly (AL)X-1270. |
| (AL)DK-45 | 1 | *Washer, Insulated - Terminal Stud Inner. |
| (AL)MAX-35 | 1 | *Washer, Insulated - Terminal Stud Outer. |
| 526-60 | 1 | *Washer, Plain - Terminal Stud - 3/8" (AL)MAX-44. |
| (AL)MN-18 | 1 | Washer, Thrust - Drive End. |
| (AL)MAD-2087 | 1 | Yoke, Clutch Assembly. |

* - Included in Frame and Field Assembly #(AL)MAY-2157.

PARTS LIST FOR STARTING MOTOR 191C314 (NOT ILLUSTRATED)

NOTE: Contact your Autolite dealer for starting motor parts.

| | | |
|---------------|---|---|
| † MCH-2133 | 1 | Armature |
| MP41A | 1 | Bearing, Absorent Bronze. |
| MEC-20 | 2 | Bolt, Thru |
| (ONAN)191P434 | 1 | Brush Set, Service (Autolite MEJ-2012AS). |
| SAD-33 | 1 | Cap, Rubber |
| MCL-59 | 1 | Clamp, Yoke Cover |
| (ONAN)191-458 | 1 | Clutch, Starter (Autolite MDL-3130. |
| MDF-26 | 1 | Connector, Switch |
| SAD-21 | 1 | Core, Moving |
| MED-28 | 1 | Cover, Yoke |
| MAD-110 | 1 | Felt |
| MDY-1005BS | 1 | Field Coil Package |
| MDY-2001B | 1 | Frame and Field Assembly |
| MEC-27 | 1 | Grommet, Connector |
| PS-1388 | 1 | Housing Assembly, Pinion |

† - Autolite Part Numbers

| REF. NO. | PART NO. | QUANT. USED | DESCRIPTION |
|---|-------------|----------------|--|
| PARTS LIST FOR STARTING MOTOR 191C314 (Cont.) | | | |
| † | MDT-1002 | 1 | Head Assembly, Commutator End. |
| | MDL-66 | 2 | Insulation, Field Connection |
| | 12X-195 | 5 | Lockwasher, (1)Switch Con., (1)Ground Lead, (1)Bearing Plate, (1)Mounting Screw, (1) No. 8 |
| | 12X-199 | 6 | Lockwasher, 1/4" - (2)Thru Bolt, (4)Switch Mounting Screw. |
| | 12X-200 | 1 | Lockwasher, 5/16" Terminal Stud |
| | SAD-1021 | 1 | Moving Core Assembly |
| | 8X-2988 | 1 | Nut, 5/16" - 18 Terminal Stud Hex |
| | MEJ-1064 | 1 | Plate Assembly, Brush |
| | SSX-36 | 1 | Plug |
| | MCL-58 | 1 | Pin, Yoke |
| | MDF-27 | 1 | Pin, Link |
| | X-401 | 1 | Pin, 1/16" x 3/8 Cotter, Link Pin |
| | MN-21 | 1 | Pin, Dowel |
| | MCS-46 | 1 | Retainer and Pinion Stop |
| | MCS-47A | 1 | Ring, Snap, Retainer and Pinion Stop |
| (ONAN) | 191-369 | 1 | Screw, Pole Shoe (Autolite GK-38) |
| | 8X-304 | 1 | Screw, Switch Connector - #8-32 x 5/16 Round Head. |
| | 8X-3407 | 4 | Screw, Bearing Plate Mounting - #8-32 x 3/8 Round Head |
| | 8X-467 | 4 | Screw, Switch Mounting - 1/4-20 x 3/8 Hex Head |
| | SAD-1022 | 1 | Screw and Link Assembly |
| | SAD-4401 | 1 | Solenoid Starting Switch |
| | SAD-27 | 1 | Spring, 3-17/32" Plunger |
| | SSX-35 | 1 | Spring, Rubber Cap |
| (ONAN) | 191-19 | 4 | Spring, Brush - (Autolite MZ-19) |
| | MN-18 | 1 | Washer, Drive End Thrust - .065" |
| | MU-54 | As Req. | Washer, Commutator End Thrust - 1/32" |
| | MU-54B | As Req. | Washer, Commutator End Thrust - 3/64" |
| | MU-54L | 1 | Washer, Commutator End Thrust - 1/16" |
| | SS-60 | 1 | Washer, 3/8" Steel |
| | MCH-1074E | 1 | Yoke |

† - Autolite Part Numbers

| REF. NO. | PART NO. | QUANT. USED | DESCRIPTION |
|-------------------------------|-------------|----------------|--|
| FIG. 15 - CONTROL PANEL GROUP | | | |
| 1 | 301C1017 | 1 | Box, Control. |
| 2 | | | Switch, Start-Stop - |
| | 308A166 | 1 | Prior to Spec C - Replaces 308-90. |
| | 308-154 | 1 | Begin Spec C. |
| 2A | 301A974 | 1 | Bracket, Start-Stop Switch Mounting - Prior to Spec C. |
| 3 | 302A58 | 1 | Ammeter, Charge. |
| 4 | 308P7 | 1 | Switch, High-Low Charge Rate. |
| 5 | 308P37 | 1 | Switch, Manifold Heater. |
| 6 | | | Relay, Starting Pilot - |
| | 307B81 | 1 | Prior to Spec C. |
| | 307B597 | 1 | Begin Spec C. |
| 7 | 304A175 | 1 | Resistor, Adjustable - 1 Ohm. |
| 9 | 304A32 | 1 | Resistor, Fixed - 15 Ohm. |
| 10 | | | Block, Terminal - Remote Connections - |
| | 332A222 | 1 | Prior to Spec C - 4 Place. |
| | 332A604 | 1 | Begin Spec C - 5 Place. |
| 11 | | | Bracket, Terminal Block - |
| | 332A198 | 1 | Prior to Spec C. |
| | 332A718 | 1 | Begin Spec C. |
| 11A | 332A616 | 1 | Strip, Marker - Terminal |
| 12 | 307B40 | 1 | Relay, 12 Volt - Manifold Heater. |
| 12 | 307B40 | 1 | Relay, 12 Volt - Governor - Prior to Spec C. |
| 13 | 307B52 | 1 | Relay, Start-Disconnect |
| 14 | 307B4 | 1 | Relay, Stop. |
| 15 | 307B180 | 1 | Relay, Charge. |
| 16 | 301B634 | 1 | Panel Only, Control Box. |
| 17 | 402-78 | 4 | Cushion, Rubber - Control Box Mounting. |
| 18 | 301A632 | 1 | Bracket, Control Box Mounting. |
| 19 | | | Harness Assembly, Wiring - |
| | 338B212 | 1 | Prior to Spec C. |
| | 338B259 | 1 | Begin Spec C. |

| REF. NO. | PART NO. | QUANT. USED | DESCRIPTION |
|---------------------------------------|-------------|----------------|--|
| FIG. 15 - CONTROL PANEL GROUP (Cont.) | | | |
| 20 | 336A1174 | 1 | Lead, Glow Plug - 7 inch. |
| 20 | 336A875 | 1 | Lead, Glow Plug - 13 inch. |
| 21 | 308A165 | 1 | Switch Assembly, Remote Start-Stop - Complete with Wall Plate - Optional Equipment - Replaces 308A94. |
| 22 | 301B621 | 1 | Cover, Control Box. |
| 23 | 301B1030 | 1 | Cover, Output Terminal. |
| 24 | | | Condenser, Feed Through - Radio Suppression - 0.1 Mfd. - |
| | 312P87 | 1 | For 1 Phase, 2 Wire Plant. |
| | 312P87 | 2 | For 1 Phase, 3 Wire Plant. |
| | 312P87 | 3 | For 3 Phase Plant. |
| 25 | 307B614 | 1 | Relay, Latching - Reset - Begin Spec C. |
| 26 | 308-91 | 1 | Switch, Reset - Begin Spec C. |
| 27 | 307A388 | 1 | Relay, Time Delay - Begin Spec C. |
| 28 | 304A193 | 1 | Resistor, Adjustable - 10 Ohms, 25 Watts - Begin Spec C. |
| 29 | 307B619 | 1 | Relay, Starting Motor - Begin Spec C. |
| 30 | 336A1390 | 1 | Lead, Starting Relay - Ground. |

FIG. 16 - GENERATOR GROUP

| | | | |
|---|----------|---|---|
| 1 | | | Armature Assembly - Includes Bearing - |
| | 201A994 | 1 | For 120 Volt, 60 Cycle plants with Parts Key No. 1. |
| | 201A995 | 1 | For 240 Volt, 60 Cycle plants with Parts Key No. 1. |
| | 201A991 | 1 | For 60 Cycle plants with Parts Key No. 2. |
| | 201A992 | 1 | For 60 Cycle plants with Parts Key No. 3. |
| | Describe | 1 | For 60 Cycle plants with Parts Key No. 4. |
| 2 | | | Bell End - |
| | 211D10 | 1 | For plants with Parts Key Nos. 1, 2, and 4. |
| | 211C29 | 1 | For plants with Parts Key No. 3. |

| REF. NO. | PART NO. | QUANT. USED | DESCRIPTION |
|-----------------------------------|-------------|----------------|--|
| FIG. 16 - GENERATOR GROUP (Cont.) | | | |
| 6 | 212C188 | 1 | Rig Assembly, Brush - Includes Brushes and Springs - For plants with Parts Key No. 1. |
| | 212C199 | 1 | For plants with Parts Key Nos. 2 and 4. |
| | 212C200 | 1 | For plants with Parts Key No. 3. |
| 7 | | | Brush, A.C. - |
| | 214A8 | 4 | For plants with Parts Key No. 1. |
| | 214A54 | 6 | For plants with Parts Key Nos. 2 and 4. |
| | 214A54 | 8 | For plants with Parts Key No. 3. |
| 8 | | | Brush, D.C. - |
| | 214A23 | 4 | For plants with Parts Key No. 1. |
| | 214A57 | 4 | For plants with Parts Key Nos. 2, 3 and 4. |
| 9 | 212A1004 | 4 | Spring, AC Brush - For plants with Parts Key No. 1. |
| 9A | 212A1123 | 6 | Spring, AC Brush - For plants with Parts Key Nos. 2 and 4. |
| 9A | 212A1123 | 8 | Spring, AC Brush - For plants with Parts Key No. 3. |
| 10 | 212A1011 | 4 | Spring, DC Brush - For plants with Parts Key No. 1. |
| 10A | 212A1106 | 4 | Spring, DC Brush - For plants with Parts Key Nos. 2, 3 and 4. |
| 11 | 232A615 | 1 | Clip, Bearing Stop. |
| 12 | 234C87 | 1 | Scroll, Air. |
| 13 | 205C62 | 1 | Blower. |
| 14 | 510A52 | 1 | Bearing, Armature Ball. |
| 15 | 210C315 | 1 | Frame only, Generator. |
| 16 | | | Pin, |
| | 516-79 | 1 | Dowel - Generator Frame to End Bell (1/4 x 1"). |
| | 516-103 | 1 | Roll - Generator Frame to Adapter (1/8 x 1/2"). |
| 17 | 221A90 | 4 | Shoe, Field Pole. |
| 18 | 222A1500 | 1 | Coil Assembly, Field. |
| 19 | | | Band, End Bell Cover - |
| | 234B98 | 1 | For plants with Parts Key Nos. 1, 2 and 4. |
| | 234B97 | 1 | For plants with Parts Key No. 3. |
| 20 | 520A386 | 4 | Stud, Generator Through. |

| REF. NO. | PART NO. | QUANT. USED | DESCRIPTION |
|-------------|-------------|----------------|-------------|
|-------------|-------------|----------------|-------------|

SERVICE KITS

NOTE: For other kits, refer to the group for the part in question.

| | | | |
|-------|---------|---|---|
| 6AC61 | 168K76 | 1 | Gasket Kit, Plant. |
| | 522K181 | 1 | Overhaul Kit, Plant - For plants with Parts Key No. 1. |
| | 522K182 | 1 | Overhaul Kit, Plant - For plants with Parts Key Nos. 2 and 4. |
| | 522K183 | 1 | Overhaul Kit, Plant - For plants with Parts Key No. 3. |
| | | | STA-BIL - Gasoline Additive to Prevent Gum Formation. |
| | 524-73 | 1 | 4 Ounce Can. |
| | 524-74 | 1 | 16 Ounce Can. |
| | 524-75 | 1 | 32 Ounce Can. |
| | | | Paint, Touch-up Enamel. |
| | 525P90 | 1 | Mouse Grey - 12 Ounce Pressurized Can. |
| | 525P137 | 1 | Green - 16 Ounce Pressurized Can. |