

CATALOG PARTS

FOR



MARINE DIESEL GENERATING PLANTS

MDSL SERIES

AC & DC

FILE MASTER
DO NOT REMOVE

ONAN

ENGINE/GENERATOR DIVISION
Studebaker
CORPORATION

2515 UNIVERSITY AVE. S.E. MINNEAPOLIS, MINN. 55414
IN CANADA: ONAN GENERATORS CANADA LTD., P.O. BOX 652, GUELPH, ONTARIO

942-2

Printed in U.S.A.

9AE66

INSTRUCTIONS FOR ORDERING REPAIR PARTS

FOR PARTS OR SERVICE, CONTACT THE DEALER FROM WHOM
YOU PURCHASED THIS EQUIPMENT OR REFER TO YOUR NEAR-
EST AUTHORIZED SERVICE STATION.

TO AVOID ERRORS OR DELAY IN FILLING YOUR PARTS ORDER, PLEASE
FURNISH ALL INFORMATION REQUESTED.

REFER TO THE NAMEPLATE ON YOUR PLANT

1. Always give the MODEL & SPEC. NO. and SERIAL NO.

The image shows a rectangular nameplate form for Onan equipment. At the top, it says 'ELECTRIC ONAN PLANT'. Below this, there are two main sections: 'MODEL AND SPECIFICATION NO.' and 'SERIAL NO.', each with a line for handwritten entry. A bold 'IMPORTANT' heading is followed by a note: 'MENTION ABOVE NUMBERS AND DATA FOR WHEN ORDERING PARTS OR WRITING ABOUT THIS PLANT'. Below this, there are several rows of fields for technical specifications: 'RATINGS AT SEA LEVEL BASED ON FUEL CHECKED BELOW:' with sub-headers 'GASOLINE' and 'DIESEL FUEL'; 'STAND BY' with fields for 'KW', 'KVA', and 'AMPS'; 'CONTINUOUS' with fields for 'KW', 'KVA', and 'AMPS'; 'A.C. VOLTS', 'CYCLES', 'PHASE', and 'P.F.'; 'EXCITER' and 'GEN DATA'; and 'R.P.M.' and 'USE' followed by 'VOLT BATTERY-NEGATIVE GROUND'. At the bottom, it says 'MANUFACTURED BY ONAN' and 'MINNEAPOLIS, MINN. U.S.A.'.

For handy reference, copy YOUR plant
nameplate information in the spaces above. .

2. Do not order by reference number or group number, use part number and description.
3. Give the part number, description and quantity needed of each item. If an old part cannot be identified, return the part prepaid to your dealer or nearest AUTHORIZED SERVICE STATION. Print your name and address plainly on the package. Write a letter to the same address stating the reason for returning the part.
4. State definite shipping instructions.

Any claim for loss or damage to your unit in transit should be filed promptly against the transportation company making the delivery. Shipments are complete unless the packing list indicates items are back ordered.

"Prices are purposely omitted from this Parts Catalog due to the confusion resulting from fluctuating costs, import duties, sales taxes, exchange rates, etc.

For Current parts prices, consult your Onan Dealer, Distributor or Parts and Service Center."

"En esta lista de partes los precios se omiten de proposito, ya que bastante confusion resulto de fluctuaciones de los precios, derechos aduanales, impuestos de venta, cambios extranjeros etc.

Consiga los precios vigentes de su distribuidor de productos "ONAN".

INSTRUCTIONS FOR ORDERING REPAIR PARTS

FOR PARTS OR SERVICE, CONTACT THE DEALER FROM WHOM
YOU PURCHASED THIS EQUIPMENT OR REFER TO YOUR NEAR-
EST AUTHORIZED SERVICE STATION.

TO AVOID ERRORS OR DELAY IN FILLING YOUR PARTS ORDER, PLEASE
FURNISH ALL INFORMATION REQUESTED.

REFER TO THE NAMEPLATE ON YOUR PLANT

1. Always give the MODEL & SPEC. NO. and SERIAL NO.

The image shows a rectangular nameplate form for Onan equipment. At the top, it says 'ELECTRIC ONAN PLANT'. Below this, there are two main sections: 'MODEL AND SPECIFICATION NO.' and 'SERIAL NO.'. A large 'IMPORTANT' notice is printed in the center, advising users to print their name and address on the back of the form. Below the notice, there are several rows of fields for technical specifications: 'RATINGS AT SEA LEVEL BASED ON FUEL CHECKED BELOW:', 'GASOLINE' and 'DIESEL FUEL' (each with a box for 'GASOLINE' and 'DIESEL FUEL'), 'STAND BY' (KW, KVA, AMPS), 'CONTINUOUS' (KW, KVA, AMPS), 'A.C. VOLTS' (cycles, phase, P.F.), 'EXCITER' (GEN DATA), and 'D.P.M.' (USE, VOLT BATTERY-NEGATIVE GROUND). At the bottom, it says 'MANUFACTURED BY ONAN' and 'MINNEAPOLIS, 14, MINNESOTA'.

For handy reference, copy YOUR plant
nameplate information in the spaces above.

2. Do not order by reference number or group number, use part number and description.
3. Give the part number, description and quantity needed of each item. If an old part cannot be identified, return the part prepaid to your dealer or nearest AUTHORIZED SERVICE STATION. Print your name and address plainly on the package. Write a letter to the same address stating the reason for returning the part.
4. State definite shipping instructions.

Any claim for loss or damage to your unit in transit should be filed promptly against the transportation company making the delivery. Shipments are complete unless the packing list indicates items are back ordered.

"Prices are purposely omitted from this Parts Catalog due to the confusion resulting from fluctuating costs, import duties, sales taxes, exchange rates, etc.

For Current parts prices, consult your Onan Dealer, Distributor or Parts and Service Center."

"En esta lista de partes los precios se omiten de proposito, ya que bastante confusion resulto de fluctuaciones de los precios, derechos aduanales, impuestos de venta, cambios extranjeros etc.

Consiga los precios vigentes de su distribuidor de productos "ONAN".

PARTS CATALOG

This parts catalog applies to the standard MDSL Generating Plants as listed in the Plant Data Table.

Parts are illustrated and identified by corresponding reference numbers in the Parts List. Parts illustrations represent typical items and do not necessarily portray a particular part number.

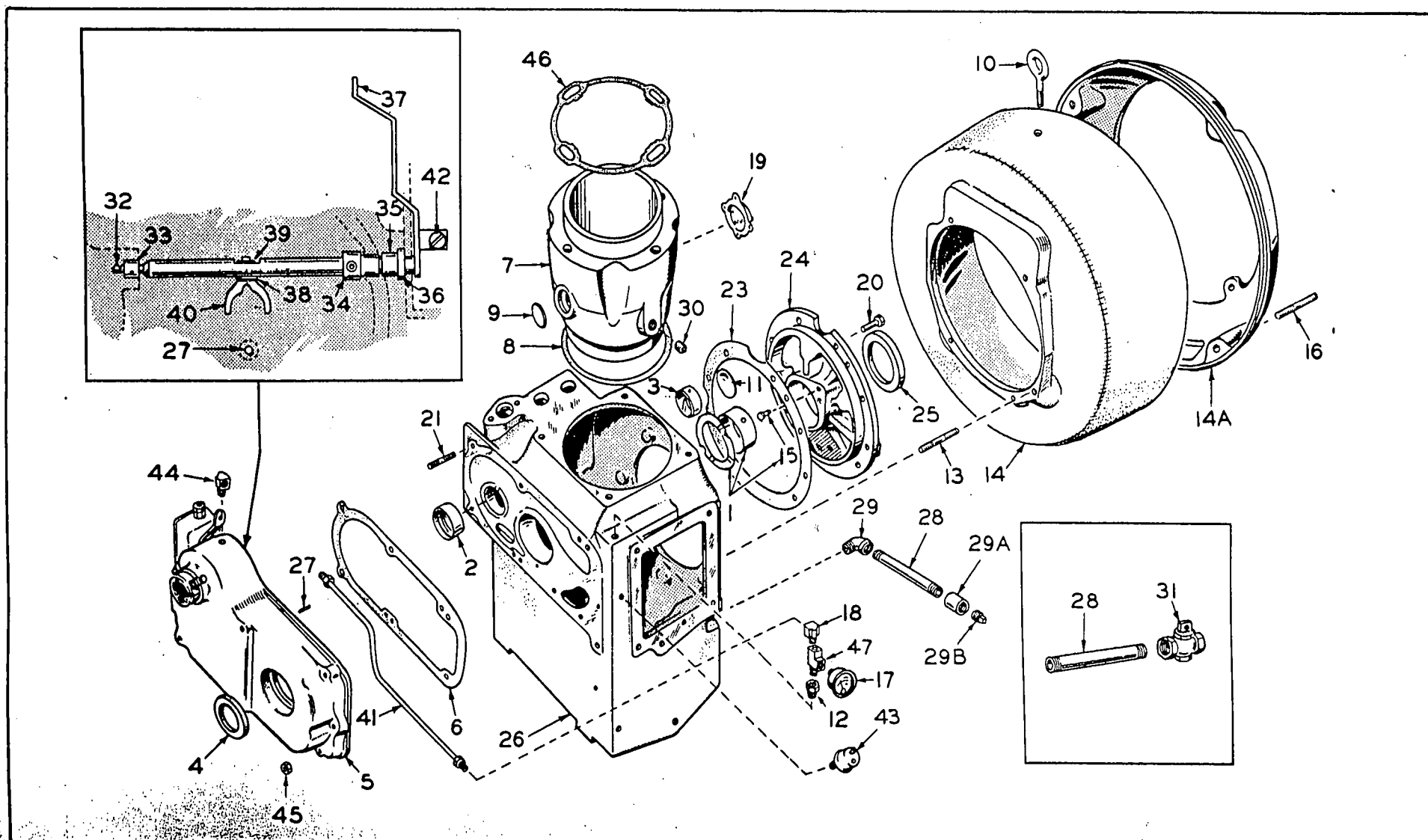
Compare your plant nameplate MODEL and SPEC. NO. with the Plant Data Table. Select the Parts Key No. (1, 2 etc. in the last column) that applies to your plant Model and Spec. No. This Parts Key No. appears in the description of parts that differ between models. Unless otherwise mentioned in the parts description (or group heading), parts are interchangeable between the various models.

PLANT DATA TABLE

MODEL AND SPEC NO.	TYPE	ELECTRICAL DATA					PARTS KEY NO.
		WATTS	VOLTS	CYCLES	PHASE	WIRE	
3MDSL-1R/ 1 *	REMOTE	3000	120	60	1	2	1
3MDSL-2R/ 1 *	REMOTE	3000	240	60	1	2	
205MDSL-51R/ 1 *	REMOTE	2500	120	50	1	2	
205MDSL-52R/ 1 *	REMOTE	2500	240	50	1	2	
3MDSL-3R/ 1 *	REMOTE	3000	120/240	60	1	3	2
205MDSL-53R/ 1 *	REMOTE	2500	120/240	50	1	3	
3MDSL-5R/ 1 *	REMOTE	3000	240	60	3	3	3
205MDSL-55R/ 1 *	REMOTE	2500	240	50	3	3	
3MDSL-1R4/ 4 *	REMOTE	3000	120AC 32DC	60	1	2	4
3MDSL-210E/ 1 *	ELECTRIC	3000	110-140	DC	-	-	5
205MDSL-224R/ 1 *	REMOTE	2500	24	DC	-	-	6
3MDSL-232R/ 1 *	REMOTE	3000	32	DC	-	-	7

* - This Spec Letter advances with manufacturing changes.

▲ - Reference to 120, 240 and 120/240 Volt, also applies to 115, 230 and 115/230 Volt.



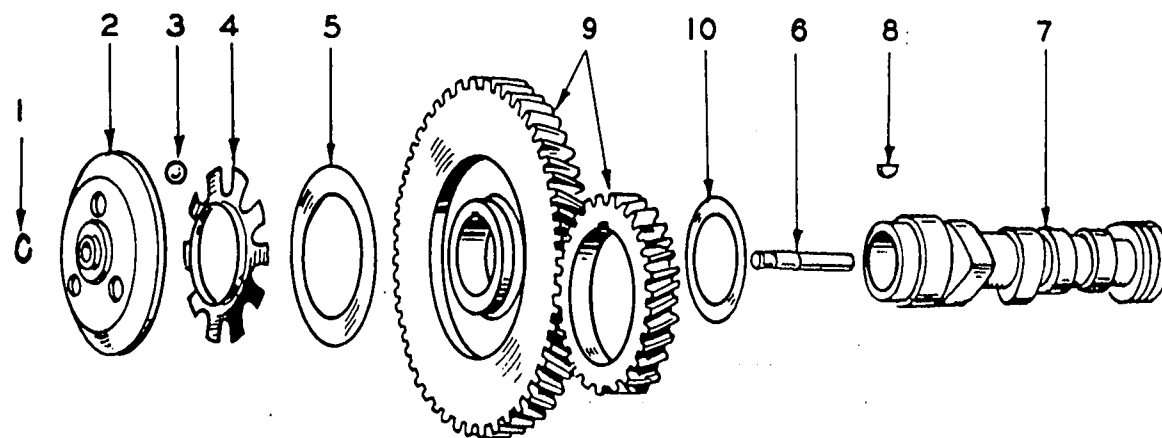


FIG. 2 - CAMSHAFT GROUP

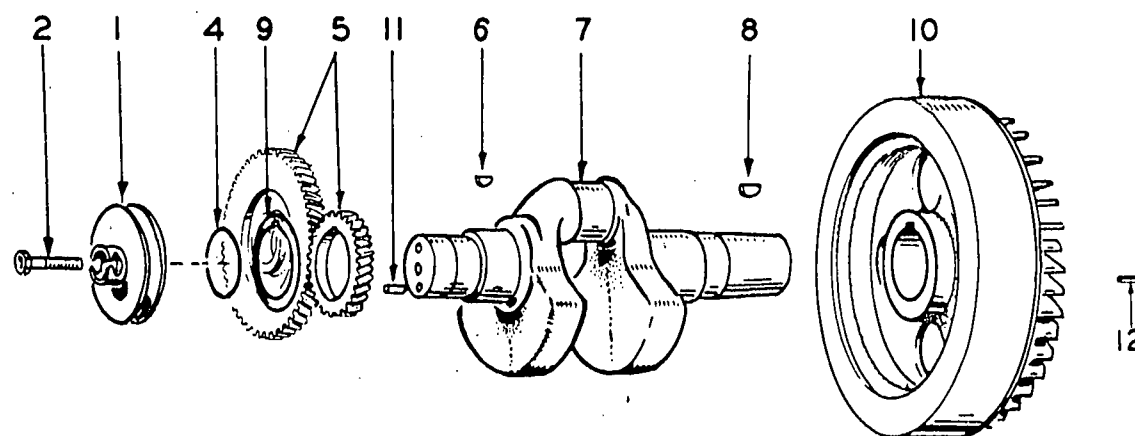


FIG. 3 - CRANKSHAFT AND FLYWHEEL GROUP



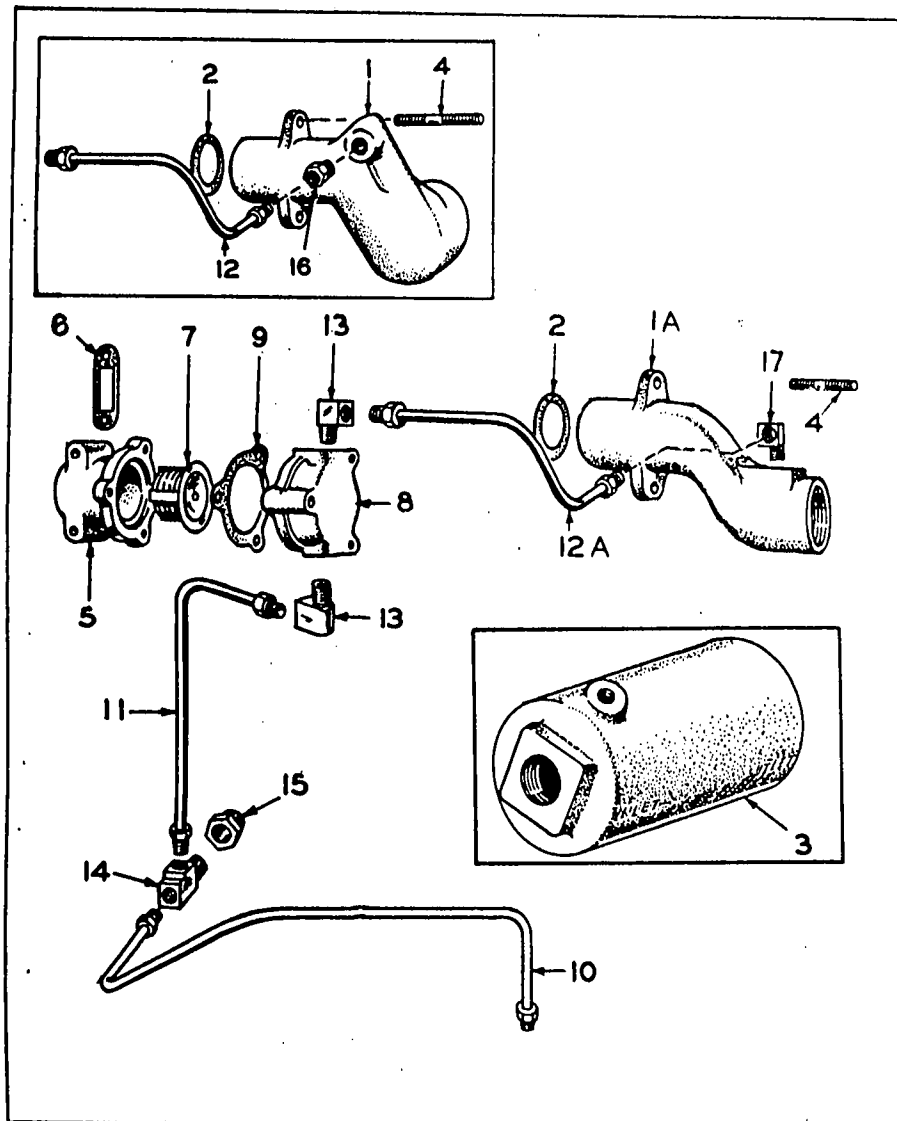


FIG.6 — MUFFLER,THERMOSTAT AND EXHAUST GROUP

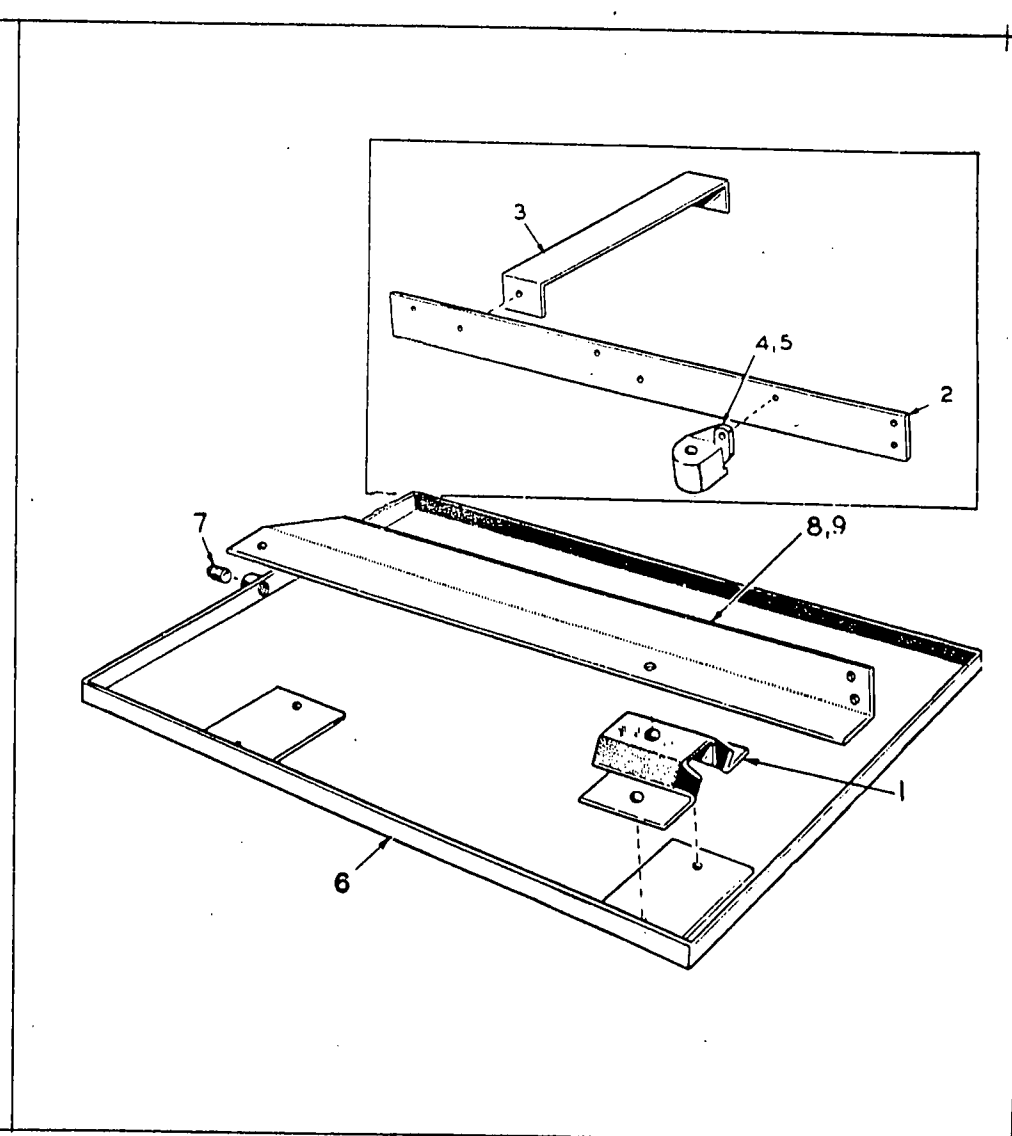


FIG.7 — MOUNTING GROUP

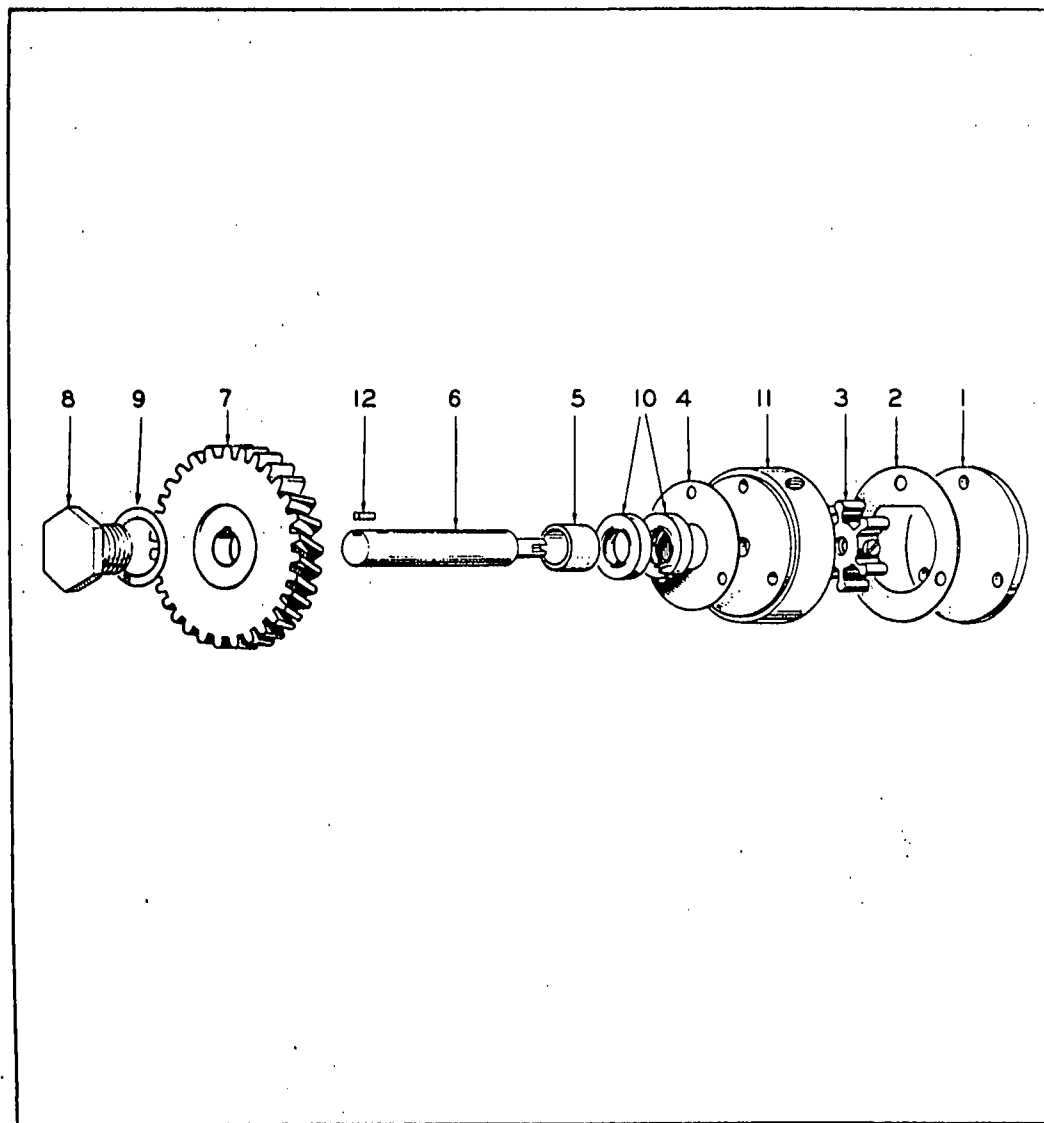


FIG.8 — WATER PUMP PARTS GROUP

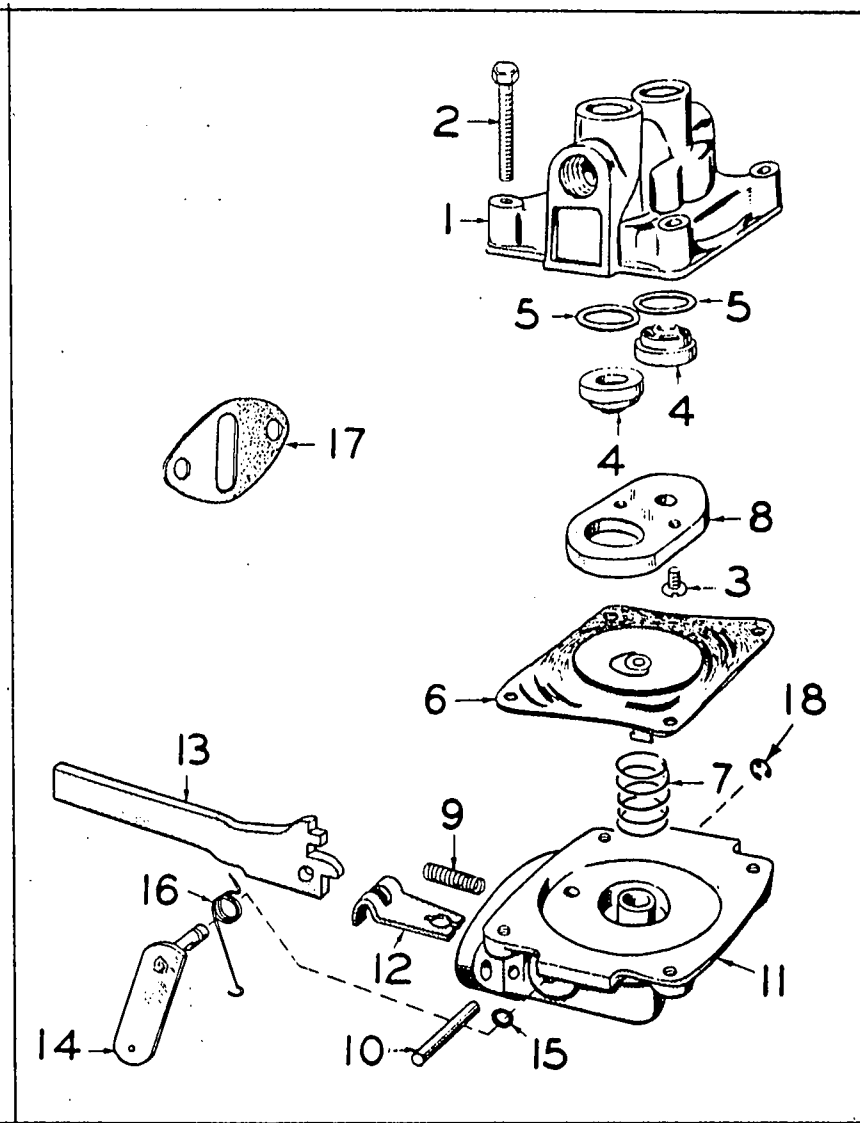


FIG.9 — FUEL TRANSFER PUMP PARTS GROUP

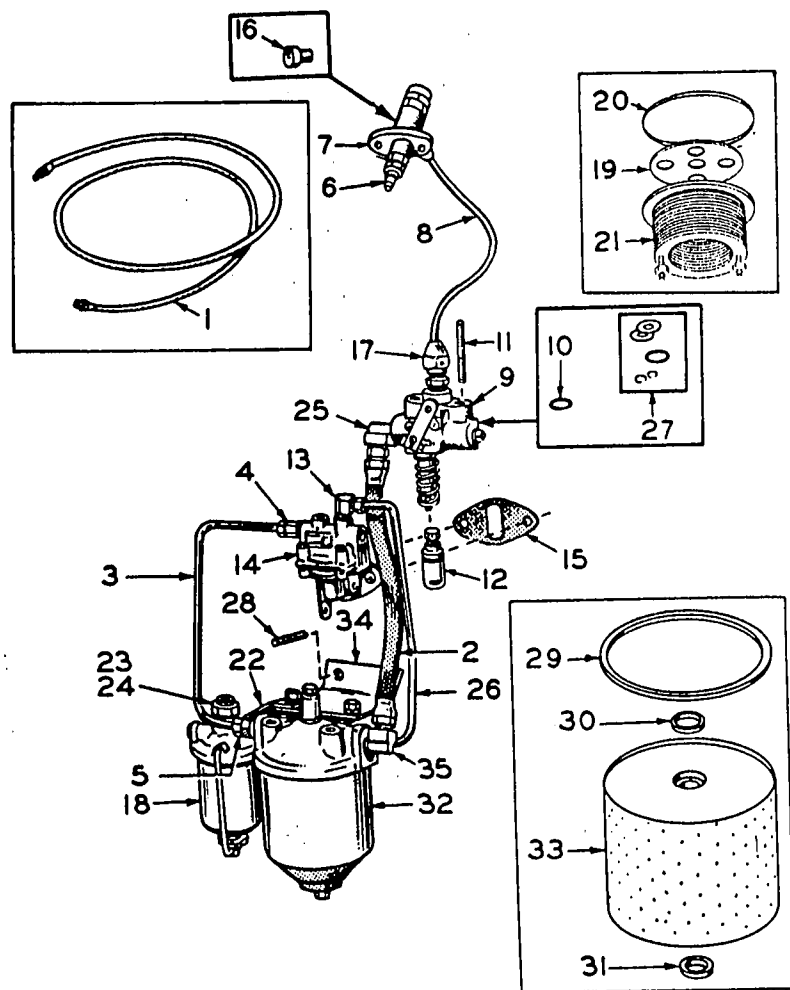


FIG. 10 — FUEL SYSTEM GROUP

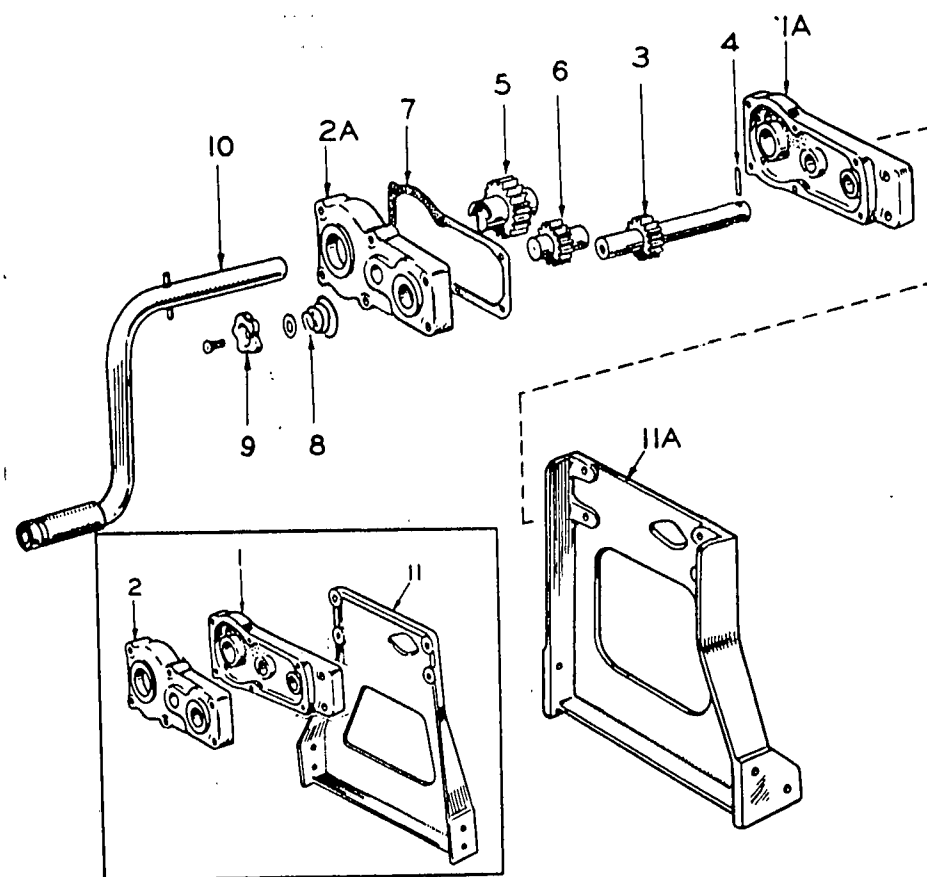


FIG. 11 — GEARED HAND CRANKING STARTER GROUP

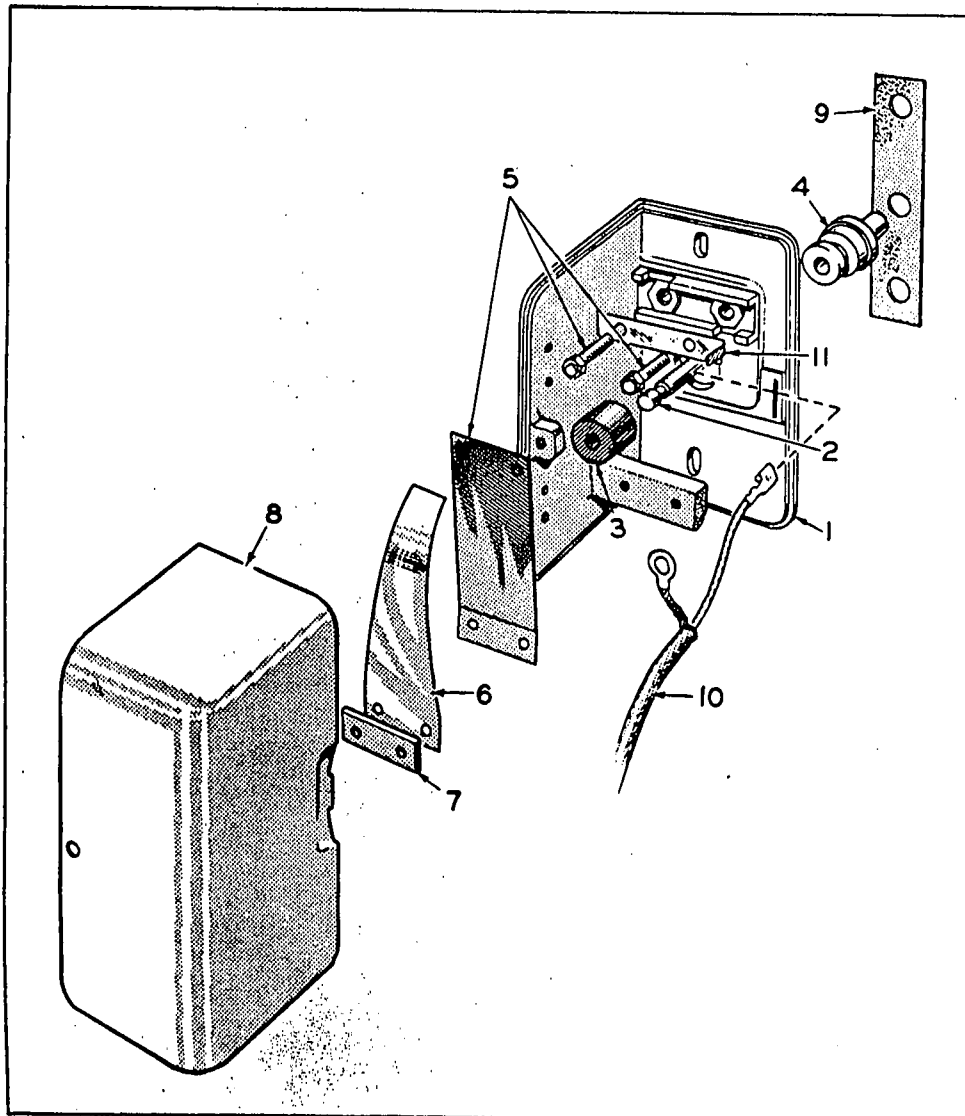


FIG. 14 — ANTI-FLICKER GROUP (AC Models)

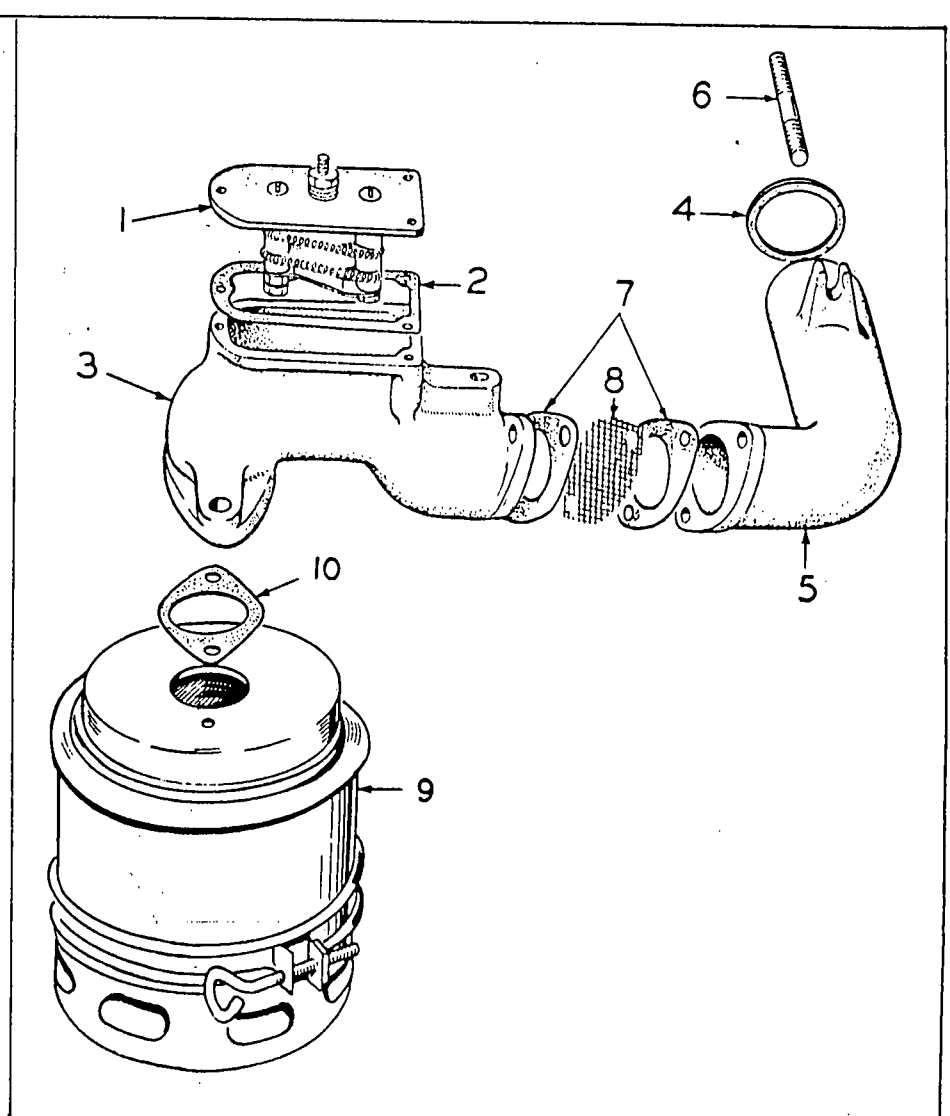
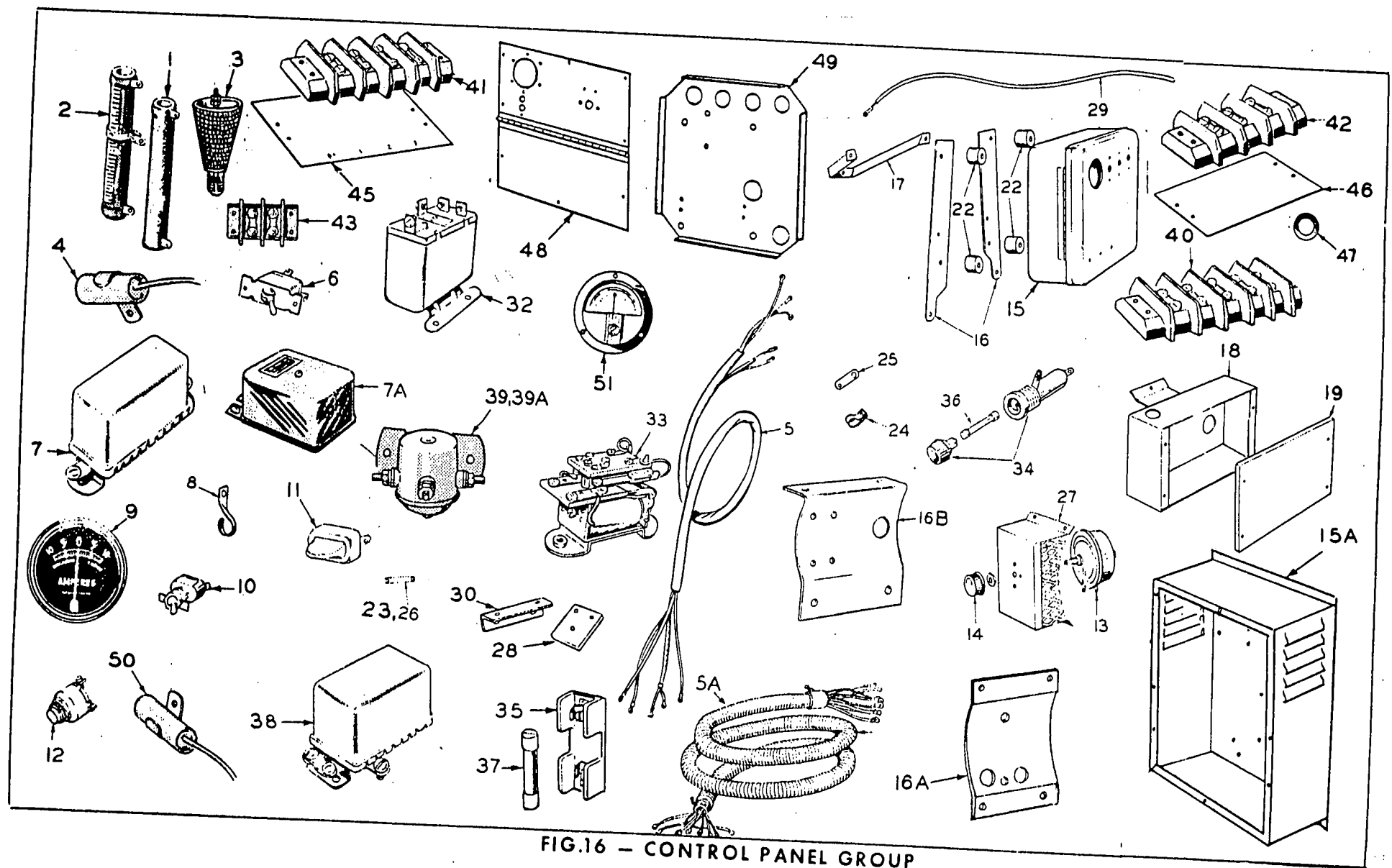


FIG.15 — AIR CLEANER AND HEATER GROUP



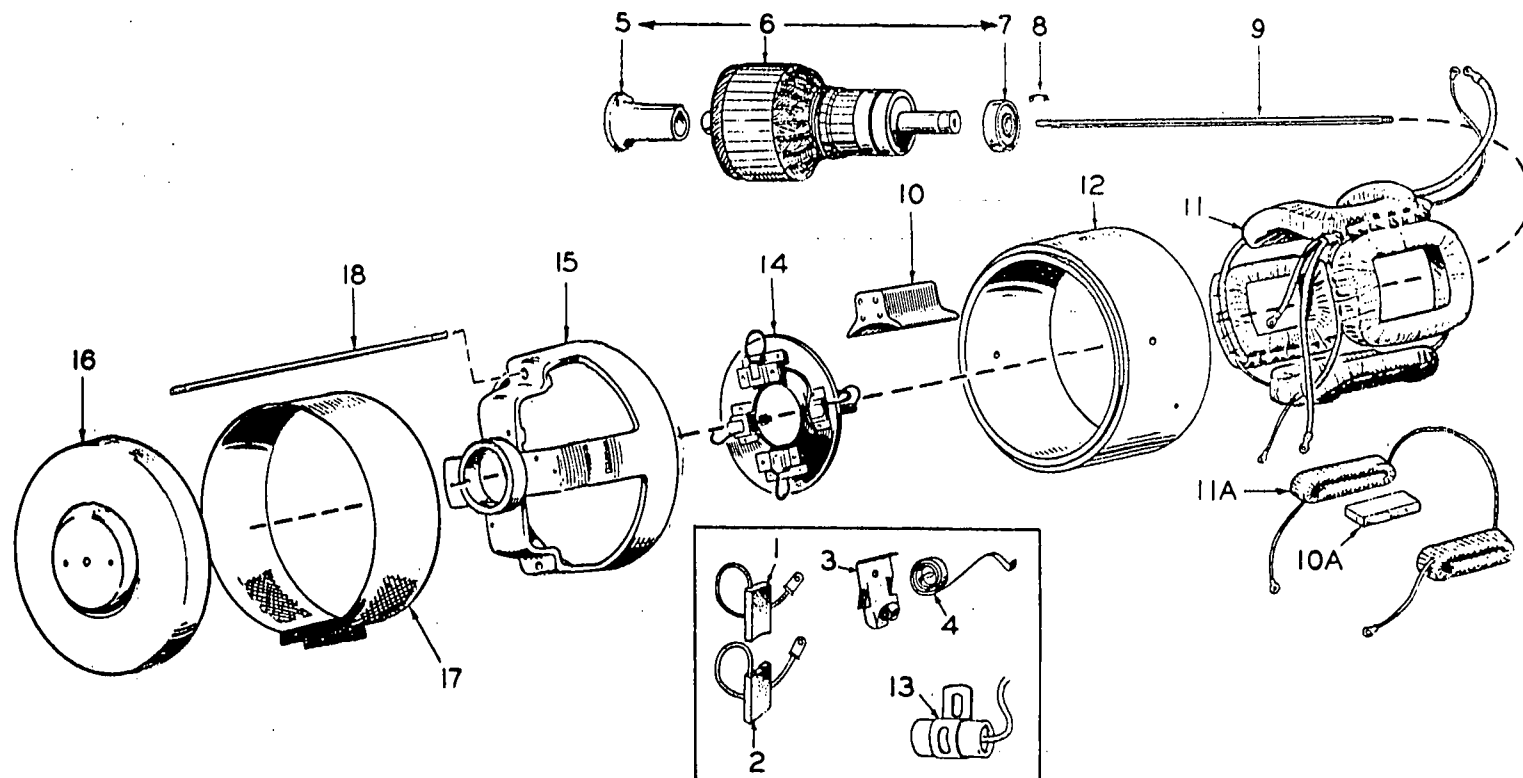


FIG.17 - GENERATOR GROUP

REF. NO.	PART NO.	QUANT. USED	DESCRIPTION
FIG. 1 - CRANKCASE, BLOCK AND GEAR COVER GROUP			
1	101K341	2	Bearing Kit, Crankshaft - Front and Rear - Includes Thrust Washer and 2 Lock Pins - Precision Type - Bronze Faced - Specify: Standard Size, .002", .010", .020", or .030" Undersize (Replaces 101K220).
2	101A70	1	Bearing, Camshaft - Front.
3	101A50	1	Bearing, Camshaft - Rear.
4	509-19	1	Seal, Oil - Crankshaft Front.
5	103D181	1	Cover Assembly, Gear - Complete - Includes Water Pump and Governor Parts - Note: For special partial assembly describe requirements. For components see this group plus Water Pump and Governor Groups.
6	103B36	1	Gasket, Gear Cover.
7	110D1065	1	Block, Cylinder - Includes Expansion Plugs.
8	110K1136	1	Gasket, Cylinder Base.
9	517-41	2	Plug, Expansion - Cylinder Block.
10	403A95	1	Bolt, Eye - Lifting.
11	517-48	1	Plug, Expansion - Camshaft - 1-5/8" diameter.
12	502-29	1	Bushing, Pipe Reducer - 1/4 x 1/8 Brass - Oil Gauge.
13	520A118	4	Stud, Flywheel Housing.
14	101D107	1	Housing, Flywheel.
14A			Adapter, Generator.
	231D80	1	For plants with Parts Key Nos. 1, 2, 3, 4, 5 and 7.
	231D42	1	For plants with Parts Key No. 6.
15	516A72	4	Pin, Bearing Lock - Supplied With Bearing Kit.
16	520A339	4	Stud, Generator Adapter - 3/8" x 2".
17	193-6	1	Gauge, Oil Pressure.
18	502A40	1	Fitting, Restricted 90° - Oil Gauge (Replaces #502A216).
19			Switch, High Water Temperature Cutoff.
	309A2	1	For plants with Parts Key Nos. 1, 2, 3 and 4 - (Grounded).
	309A107	1	For plants with Parts Key Nos. 6 and 7 - (Ungrounded).
20	805-18	8	Bolt, Place - Bearing Plate.
21	520A9	3	Stud, Gear Cover - 5/16 x 1-13/16".
23	101K116	1	Gasket Kit, Rear Bearing Plate.

REF. NO.	PART NO.	QUANT. USED	DESCRIPTION
FIG. 1 - CRANKCASE, BLOCK AND GEAR COVER GROUP (Cont.)			
24	101C268	1	Plate Only, Rear Bearing.
25	509P64	1	Seal, Oil - Crankshaft Rear.
26	101A308	1	Crankcase Assembly - Includes Bearing Plate, Bearings, Pin and Plugs.
27	516-130	1	Pin, Roll - Governor Cup Stop (Located in gear cover).
28			Nipple, Pipe - Oil Drain.
	505-275	1	Prior to Spec C (1/2 x 8").
	505-143	1	Begin Spec C (1/2 x 6-1/2").
29	505-50	1	Elbow, Pipe Street - 1/2" - Oil Drain - Begin Spec C (Replaces #505-228).
29A	505-14	1	Coupling, Pipe - 1/2" - Oil Drain - Begin Spec C.
29B	505-56	1	Plug, Pipe - 1/2" - Oil Drain - Begin Spec C.
30	502-178	1	Plug, Brass - 1/4" - Cylinder Block Water Drain.
31	504-11	1	Valve, Oil Drain - 1/2" - Prior to Spec C.
32	510P14	1	Ball, Bearing - Governor Shaft.
33	510A8	1	Bearing, Needle - Governor Shaft (Small).
34	150A229	1	Collar, Governor Shaft.
35	510P13	1	Bearing, Needle - Governor Shaft (Large).
36	509P8	1	Seal, Oil - Governor Shaft.
37	150A677	1	Arm and Shaft, Governor.
38	526-140	1	Washer, Governor Yoke.
39	518-129	1	Ring, Yoke Retaining - "E" Shaped.
40	150A620	1	Yoke Assembly, Governor - Includes Yoke, Washer, and Retaining Ring.
41	120B482	1	Line, Oil - Gauge to Gear Cover.
42	150A207	1	Stud, Governor Spring Sensitivity Adjustment.
43			Switch, Oil Pressure - Decompression Release Solenoid Cut-In.
	309P104	1	For plants with Parts Key Nos. 1, 2, 3 and 4 (one wire, for grounded system).
	309P105	1	For plants with Parts Key Nos. 6 and 7 (two wire, for ungrounded system).
44	502-2	1	Elbow, Inverted Male - Oil Line to Gear Cover.
45	110A445	2	Nut, Hex Full - Gear Cover Stud - Hardened - 5/16-24.
46	110B1069	1	Gasket, Cylinder Block - 1/16" Kaokork.
47	502-58	1	Tee, Special Pipe - Brass - 1/8" - Oil Gauge.
	502-105	1	Elbow, Inverted Male - 45° - Water Pump Outlet.
	502-28	1	Plug, Hex Head Pipe - Brass - 1/8" - Water Pump Priming.
	815-154	1	Screw, Socket Head Set - #10-32 x 3/16" - Governor Shaft Collar.

REF. NO.	PART NO.	QUANT. USED	DESCRIPTION
-------------	-------------	----------------	-------------

FIG. 2 - CAMSHAFT GROUP

1	150A78	1	Ring, Snap - Center Pin.
2	150B612	1	Cup, Governor.
3	510-15	10	Flyball, Governor.
4	150B85	1	Spacer, Ball.
5	150A77	1	Plate, Governor Ball.
6	150A75	1	Pin, Camshaft Center.
7	105-178	1	Camshaft - Includes Center Pin.
8	515-1	1	Key, Camshaft Gear.
9	105-74	1	Gear Set - Includes Cam and Crank Gears (Listed also in Crankshaft and Flywheel Group).
10	105A42	1	Washer, Camshaft Thrust.

FIG. 3 - CRANKSHAFT AND FLYWHEEL GROUP

1	104C348	1	Dog, Crank - With Pulley Integral.
2	806-38	1	Screw, Counter-Bore Cap - 7/16 - 14 X 2 - Crank Dog to Crankshaft.
4	518-16	1	Ring, Snap - Crankshaft Gear Retainer.
5	105-74	1	Gear Set - Includes Crank and Cam Gears (Listed also in Camshaft Group).
6	515-1	1	Key, Crankshaft Gear.
7	104A189	1	Crankshaft.
8	515-90	1	Key, Flywheel.
9	104A95	1	Washer, Crankshaft Gear Retainer.
10	104C60	1	Flywheel.
11	516-92	2	Pin, Roll - Crank Dog.
12	516-64	2	Pin, Groove - Flywheel - 5/16" x 1-1/8".

REF. NO.	PART NO.	QUANT. USED	DESCRIPTION
FIG. 4 - PISTON AND CONNECTING ROD GROUP			
1	113-91	1	Ring Set, Piston - Includes (1) #113A43, (2) #113A15, and (1) #113A49 - Specify: Standard or, .010", .020", .030", or .040" Oversize - (Note : 113K55 will work).
2	112-82	1	Piston and Pin Assembly - Specify: Standard or, .010", .020", .030", or .040" Oversize.
3	112A16	1	Pin, Piston - Specify: Standard or .002" Oversize.
4	112A19	2	Retainer, Piston Pin.
5	114B52	1	Rod, Connecting - Includes Bushings and Bearings - Specify: Std. or .002", .010", .020", or .030" Undersize.
7		1	Ring, Top Compression - Order Ring Set 113-91
8		2	Ring, Compression - Order Ring Set 113-91
9		1	Ring, Oil Control - Order Ring Set 113-91
10	114A54	2	Bushing, Connecting Rod - To Wrist Pin - Semi-Finished.
11	114B53	2	Bearing Half, Connecting Rod - Precision Type - Specify: Standard or .002", .010", .020", or .030" Undersize.
12	805-20	2	Bolt, Place - Connecting Rod - 3/8-24 x 1-1/2" - No lock required.

FIG. 5 - CYLINDER HEAD, VALVE AND ROCKER BOX GROUP

1	110A1083	1	Head Assembly, Cylinder - Includes Valve Guides and Seat Insert.
2	110A1043	2	Guide, Valve.
3	110A343	1	Insert, Valve Seat - Exhaust - Specify: Standard, or .005", or .025".
4	110A1048	1	Gasket, Cylinder Head - Copper.
5	520A549	4	Stud, Cylinder - 1/2 x 7-7/8".
6	110A419	1	Gasket, Spacer to Head.
7	147A44	1	Shield, Nozzle Heat (Note: Prior to Serial #602024, two Shields were used. To replace Bottom Shield, order #147K101 Spacer Kit).
7A	147A97	1	Spacer, Nozzle - Begin Serial #602024.
8	147A43	1	Gasket, Nozzle Heat Shield to Spacer.
9	147A82	1	Bushing, Nozzle.
10	147B81	1	Nozzle and Holder Assembly.
11	147-16	1	Nozzle Only - Component of Nozzle and Holder Assembly.
12	147-12	1	Gasket, Nozzle Holder - Copper - Component of Nozzle and Holder Assembly.
13	147-33	2	Gasket, Nozzle Holder Cap - Copper - Component of Nozzle and Holder Assembly.

REF. NO.	PART NO.	QUANT. USED	DESCRIPTION
FIG. 5 - CYLINDER HEAD, VALVE AND ROCKER BOX GROUP (Cont.)			
14	110A236	2	Spring, Valve.
15	110A501	4	Lock, Valve Spring Retainer.
16	110A1038	2	Washer, Valve Spring Retainer.
17	110A1041	1	Valve, Exhaust.
18	110A1042	1	Valve, Intake.
19	115A103	2	Rod, Push - Valve.
20	115B96	2	Tappet, Valve.
21	115A102	2	Shield, Push Rod.
22	509P18	5	Seal, "O" Ring - 7/8"OD x 3/32" Dia. - (4) Push Rod Shield, (1) Release Assembly to Rocker Box.
23	115D97	1	Box, Rocker - Prior to Spec "D".
23	115D119	1	Box, Rocker - Begin Spec "D".
23A	110A1158	2	Spacer, Valve Spring - Begin Spec "D".
24	115A104	1	Gasket, Rocker Box to Head.
25	115A109	1	Gasket, Rocker Box Cover.
26	115C100	1	Cover, Rocker Box.
27	526-65	2	Washer, Flat - Copper - Rocker Box Cover.
28	115A107	1	Arm, Exhaust Rocker - Includes Needle Bearing and Screws.
29	115A108	1	Arm, Intake Rocker - Includes Needle Bearing and Screw.
30	510-51	2	Bearing, Needle - Rocker Arm.
31	815-87	1	Screw, Set - Compression Release Adjusting - 1/4-20 x 1-1/2" Hardened.
32	115P91	2	Screw, Rocker Arm to Push Rod Adjustment - (Valve Clearance) - Self Locking.
33	115A106	1	Shaft, Rocker Arm.
34	115A113	1	Bracket, Rocker Arm Shaft Mounting.
35	518-7	2	Ring, Retaining - External - Rocker Arm to Shaft.
36	115A105	2	Washer, Rocker Arm.
37	502-2	1	Elbow, Inverted Male - 400 x 4 - Rocker Box Oil Drain.
38			Solenoid Assembly, Decompression Release.
	306C49	1	For plants with Parts Key Nos. 1, 2 and 3 - 12 Volt Grounded.
	306C91	1	For plants with Parts Key No. 4 - 32 Volt Grounded.
	306C94	1	For plants with Parts Key No. 7 - 32 Volt Ungrounded.
	306C146	1	For plants with Parts Key No. 6 - 24 Volt Ungrounded.
39	306A145	1	Plunger and Retainer, Solenoid - Includes Plunger, Guide, Spring and Retainer - For plants with Parts Key Nos. 1, 2, 3, 4, 6 and 7.

REF. NO.	PART NO.	QUANT. USED	DESCRIPTION
-------------	-------------	----------------	-------------

FIG. 5 - CYLINDER HEAD, VALVE AND ROCKER BOX GROUP (Cont.)

40	509-31	1	Seal, "O" Ring - Solenoid Plunger - 1/2"O.D. - For plants with Parts Key Nos. 1, 2, 3, 4, 6 and 7.
41	516-54	1	Pin, Groove - #3, 5/64 x 3/8 - Solenoid Plunger - For plants with Parts Key Nos. 1, 2, 3, 4, 6 and 7.
42	110B626	1	Release Assembly, Compression - For plants with Parts Key No. 5.
43	110A376	1	Adapter, Shaft - For plants with Parts Key No. 5.
44	110A624	1	Bracket, Compression Release - For plants with Parts Key No. 5.
45	110A625	1	Shaft, Compression Release - For plants with Parts Key No. 5.
46	518-115	1	Ring, Snap - Release - For plants with Parts Key No. 5.
47	190A66	1	Spring, Compression Release - For plants with Parts Key No. 5.
48	333A37	1	Plug, Glow - With Gasket - NOTE: 333K14 will work.
49	110A546	1	Gasket, Glow Plug.
51	520A554	2	Stud, Rocker Box and Cover Mounting - 5/16 x 3-9/16".
	866-3	2	Nut, Hex Cap - 5/16-18 - Rocker Box Cover.
	860-15	2	Nut, Hex Head - Hardened - 5/16-18 - Rocker Box.
	526-65	5	Washer, Copper (3) Rocker Box Mounting, (2) Rocker Box Cover.
	526A35	4	Washer, Flat - Cylinder Head.
	110A707	4	Nut, Hex - 1/2-20, Hardened - Cylinder Head.
	800-28	1	Screw, Hex Head Cap - 5/16-18 x 1" - Rocker Box to Head.
	800-36	2	Screw, Hex Head Cap - 5/16-18 x 2-3/4" - Nozzle Holder.
	800-53	2	Screw, Hex Head Cap - 3/8-16 x 1-3/4" - Rocker Arm Shaft Bracket.
	803-36	1	Screw, Socket Head Set - 1/4-20 x 1/2" - Solenoid Retaining.

FIG. 6 - MUFFLER, THERMOSTAT AND WATER LINES GROUP

			Manifold, Exhaust
1	154C476	1	Prior to Spec C (Outlet to right) - Use #154C550 Manifold, #502-42 Elbow and #131B121 Line.
1A	154C550	1	Begin Spec C (Front Outlet).
2	154A460	1	Gasket, Exhaust Manifold to Head.
3	155C234	1	Muffler, Exhaust.
4	520A553	2	Stud, Exhaust Manifold - 3/8 x 2-1/4".
5	131B109	1	Housing, Water Outlet - With provision for thermostat.

REF. NO.	PART NO.	QUANT. USED	DESCRIPTION
-------------	-------------	----------------	-------------

FIG. 6 - MUFFLER, THERMOSTAT AND WATER LINES GROUP (Cont.)

6	131A111	1	Gasket, Water Outlet Housing to Head.
7	309-54	1	Thermostat, Coolant (150°F.).
8	131B110	1	Cover, Water Outlet Housing.
9	131A112	1	Gasket, Water Outlet Housing Cover.
10	131B114	1	Line, Water - Pump to Block.
11	131A115	1	Line, Water - By-Pass.
			Line, Water - Thermostat to Exhaust Manifold.
12	131A116	1	Prior to Spec. C.
12A	131B121	1	Begin Spec. C.
13	502-4	2	Elbow, Inverted Male - 90°.
14	502-214	1	Tee, Inverted - Water By-Pass - 752 x 5.
15	502-29	1	Bushing, Reducer - 1/4 x 1/8 Brass - Water By-Pass Tee.
16	502-18	1	Connector, Inverted Male - Water Line to Manifold - Prior to Spec C.
17	502-42	1	Elbow, Inverted Male - Water Line to Manifold - Begin Spec C.
	502-58	1	Tee, Special Pipe - Brass - Water Pump Inlet.

FIG. 7 - MOUNTING GROUP

1	402A186	4	Dampener, Vibration.
2	403B465	2	Bar, Mounting Base - Prior to Spec C.
3	403B497	1	Cross Member, Mounting Base - Prior to Spec C.
4	403B503	2	Foot, Mounting Base - Left Hand - Oil Fill Side - Prior to Spec C.
5	403B502	2	Foot, Mounting Base - Right Hand - Push Rod Side - Prior to Spec C.
6	405C1123	1	Pan, Drip.
7	505-56	1	Plug, Pipe - 1/2" - Drip Pan Drain.
			Angle, Mounting - Begin Spec C.
8	403B571	1	Left Hand (Oil Fill Side).
9	403B572	1	Right Hand (Push Rod Side).
	520A580	6	Stud, Mounting Angles.

REF. NO.	PART NO.	QUANT. USED	DESCRIPTION
-------------	-------------	----------------	-------------

FIG. 8 - WATER PUMP PARTS GROUP

NOTE: Water Pump NOT Supplied as a Complete Unit.

	131K107	1	Repair Kit, Water Pump - Includes Parts marked (†).
1	131A42	1	†Cover, Water Pump.
2	131A44	1	†Gasket, Water Pump Cover.
3	131A50	1	†Impeller, Water Pump - Rubber (Includes Brass Screw).
4	131A43	1	†Gasket, Water Pump Body - Neoprene.
5	131A51	1	Bearing, Water Pump Shaft - Bronze.
6	131A47	1	Shaft, Water Pump Drive.
7	131A90	1	Gear, Water Pump Drive.
8	131A41	1	Plug, Screw - Water Pump - 1" Hex Head.
9	131A35	1	Gasket, Water Pump Screw Plug.
10	509-44	2	†Seal, Water Pump - (1) Oil, (1) Water.
11	131B45	1	†Body, Water Pump - Brass.
12	515A116	1	Key, Water Pump Gear - 1/8 x 1/8 x 1/4".
	811-105	3	Screw, Round Head Brass Machined - #10-32 x 1" - Water Pump Mounting.

† - Parts contained in Repair Kit 131K107.

FIG. 9 - FUEL TRANSFER PUMP PARTS GROUP

	149C693	1	Pump, Fuel Transfer.
	149K526	1	Repair Kit, Fuel Pump - Includes parts marked (*).
1		1	Body, Upper - Not Sold Separately.
2	815-148	4	Screw, Hex Head - #8-32 x 7/8" - Pump Assembly.
3	815-147	2	Screw, Valve Retainer - Flat Head - #6-32 x 5/8".
4	149-96	2	*Valve and Cage.
5	149A95	2	*Gasket, Valve.
6	149A582	1	*Diaphragm Assembly.
7	149A672	1	*Spring, Diaphragm.

REF. NO.	PART NO.	QUANT. USED	DESCRIPTION
-------------	-------------	----------------	-------------

FIG. 9 - FUEL TRANSFER PUMP PARTS GROUP (Cont.)

8	149A539	1	Retainer, Valve Cage.
9	149A675	1	*Spring, Rocker Arm.
10	516A113	1	Pin, Rocker Arm.
11		1	Body, Lower - Not Sold Separately.
12, 13	149A710	1	Arm and Link Set, Rocker.
14	149A551	1	Lever, Hand Primer.
15	509-65	2	Seal, "O" Ring - Priming Lever.
16	149A404	1	Spring, Priming Lever.
17	149A3	1	*Gasket, Pump Mounting.
18	518-129	1	Ring, Retainer - Hand Primer Lever.

* - Parts contained in Repair Parts Kit #149K526.

FIG. 10 - FUEL SYSTEM GROUP

1	501A7	2	Line, Flexible Fuel - Supply and Return.
2	501A63	1	Line, Flexible Fuel - Secondary Filter to Injection Pump.
3	149A696	1	Line, Fuel - Transfer Pump to Secondary Filter.
4	502-3	4	Connector, Inverted Male - Transfer Pump, Primary Filter Outlet and Flexible Fuel Lines.
5	502-33	1	Connector, Inverted Male - Secondary Filter Inlet.
6		1	Nozzle Only - Refer to Cylinder Head Group.
7		1	Nozzle Assembly - Refer to Cylinder Head Group.
8	149C704	1	Pipe Assembly, Fuel - Injection Pump to Nozzle.
9	147C25	1	Pump Assembly, Injection.
10	509-21	1	Seal, "O" Ring - Injection Pump to Crankcase.
11	520A456	2	Stud, Injection Pump Mounting - 5/16" x 2-1/2".
12	115A111	1	Tappet, Injection Pump.
13	502-2	1	Elbow, Inverted Male - Transfer Pump Inlet.
14		1	Pump Assembly, Fuel Transfer - Refer to Fuel Transfer Pump Group.

REF. NO.	PART NO.	QUANT. USED	DESCRIPTION
-------------	-------------	----------------	-------------

FIG. 10 - FUEL SYSTEM GROUP (Cont.)

15		1	Gasket, Fuel Transfer Pump Mounting - Refer to Fuel Transfer Pump Group.
16	147-4	2	Ring, Coupling.
17	147-3	2	Nut, Fuel Pipe Coupling.
18	149B426	1	Filter Assembly, Primary Fuel.
19	149P494	1	Gasket, Fibre - Primary Filter Element to Cover.
20	149P439	1	Gasket, Neoprene - Primary Filter Bowl to Cover.
21	149P438	1	Element, Primary Filter - Brass Disc Permanent Type - Order Gaskets Separately.
22	149A667	1	Bracket, Primary Fuel Filter Mounting.
23	868-7	1	Nut, Hex Jam - 5/8"-18 - Mounting Primary Filter.
24	854-28	1	Washer, Internal Tooth - 5/8" - Mounting Primary Filter.
25	149A430	1	Elbow - With Strainer - Injection Pump Inlet.
26	149B697	1	Line, Fuel - Primary Filter to Fuel Transfer Pump.
27	147P58	1	Washer Kit, Injection Pump Control Sleeve - Includes (2) Washers, (1) "O" Ring, and (2) Snap Ring.
28	520A29	2	Stud, Secondary Filter Mounting - 1/4" x 1".
29	149P456	1	Gasket, Secondary Filter - Bowl to Cover - Permanently cemented in place.
30	149P455	1	Gasket, Secondary Filter - Cartridge to Head - Permanently cemented in place.
31	149P493	1	Gasket, Secondary Filter Cartridge to Retainer.
32	149C408	1	Filter Assembly, Secondary Fuel.
33	149P428	1	Cartridge, Secondary Fuel Filter.
34	149B665	1	Bracket, Secondary Fuel Filter Mounting.
35	502-54	1	Elbow, Street - Secondary Filter Outlet.
	526-63	2	Washer, Copper - Fuel Pump Mounting.

FIG. 11 - GEARED HAND-CRANKING STARTER GROUP

			Starter, Hand-Cranking Geared - Complete.
	192C318	1	Prior to Spec C.
	192C335	1	Begin Spec C.
			Adapter Only, Crank.
1	192C297	1	Prior to Spec C.
1A	192C330	1	Begin Spec C.
			Cover, Crank Adapter.
2	192C229	1	Prior to Spec C.
2A	192C331	1	Begin Spec C.
3	192A312	1	Gear and Shaft, Crank Dog Engaging.

REF. NO.	PART NO.	QUANT. USED	DESCRIPTION
-------------	-------------	----------------	-------------

FIG. 11 - GEARED HAND-CRANKING STARTER GROUP (Cont.)

4	516-99	1	Pin, Roll - Crank Dog Engaging - 1/4" x 1" Long.
5	192A235	1	Gear and Shaft, Driver - Hand Crank Engaging.
6	192A237	1	Gear and Shaft, Idler.
7	192B239	1	Gasket, Cover to Adapter.
8	192A242	1	Spring, Disengaging.
9	192A243	1	Button, Engaging.
10	192B256	1	Crank, Hand - Gear Starter.
			Bracket, Crank Adapter.
11	192C304	1	Prior to Spec C.
11A	192D326	1	Begin Spec C.

FIG. 12 - OIL SYSTEM GROUP

1	123A413	1	Hose, Breather - 7/16" I.D. x 8" Long - Flexible.
2	123A191	1	Gasket, Oil Fill Cap.
3	123A315	1	Valve Assembly, Check - Breather Tube.
4	122C56	1	Filter Assembly, Oil - Includes Cartridge.
5	122-47	1	Screw, Oil Filter Cover Cap.
6	122-48	1	Washer, Oil Filter Cover Cap Screw.
7	122-35	1	Cover Assembly, Oil Filter.
8	122-36	1	Gasket, Oil Filter Cover.
9	122-37	1	Cartridge, Oil Filter Replacement - Includes Gasket.
10	122B30	1	Gasket, Oil Filter Bracket Mounting.
11	120B476	1	Line, Oil - Rocker Box Drain.
12	520A11	5	Stud, Oil Filter Bracket Mounting - 5/16 x 1-7/16".
13	120K161	1	Gasket Kit, Oil Pump - Includes Mounting and Assembly Gaskets.
14	120A457	1	Pump Assembly, Oil.
15	120A480	1	Cup Assembly, Oil Suction.
16	123B553	1	Indicator Assembly, Oil Level.
17	123A313	1	Tube Assembly, Oil Fill.

REF. NO.	PART NO.	QUANT. USED	DESCRIPTION
-------------	-------------	----------------	-------------

FIG. 12 - OIL SYSTEM GROUP (Cont.)

18	123A298	1	Tube, Breather.
19	123A346	1	Gasket, Breather Tube Cap.
20	122B151	1	Bracket, Oil Filter Mounting - Also mounts breather and oil fill tube (Replaces #122D76).
22	120A225	1	By-Pass Assembly, Oil.
23	502-99	1	Elbow, Reducing - By-Pass.
24	123A336	1	Cap, Breather Tube.
25	123-452	1	Baffle, Breather Tube.
26	123A347	1	Spacer, Breather Tube.
27	502-3	2	Connector, Inverted Male - Oil Drain Lines.
28	502-2	3	Elbow, Inverted Male - (2) Pressure Line, (1) Drain Line.
29	122A64	1	Line, Oil Filter Pressure.
30	122A65	1	Line, Oil Filter Drain.
31	120A221	1	Spring, Oil By-Pass.
32	526-65	1	Washer, Flat - Copper - Mounting Filter Bracket.
33	503-27	1	Clamp, Hose - Breather Hose to Air Cleaner.
	120A182	1	Capscrew, Oil Pump Mounting - Special Shoulder Type.

FIG. 13 - GOVERNOR GROUP

1	150A639	1	Joint, Ball.
2	150A368	1	Link, Governor.
3	518-4	1	Clip, Governor Link End.
4	150A369	1	Linkage Assembly.
5	870-53	2	Nut, Hex - #10-32 - Speed Adjusting Stud and Governor Link.
5A	870-131	1	Nut, Lock - #10-32 - Ball Joint to Arm.
6	150B7	1	Box, Governor Spring Mounting.
7	150A47	1	Cover, Governor Spring Mounting Bar.
8	150A98	1	Stud, Governor Adjusting.
9	150A98	1	Spring, Governor.
10	150A398	1	Nut, Spherical Face - Governor Speed Adjusting - #10-32 x 5/16".

REF. NO.	PART NO.	QUANT. USED	DESCRIPTION
-------------	-------------	----------------	-------------

FIG. 14 - ANTI-FLICKER GROUP (AC MODELS)
(For plants with Parts Key Nos. 1, 2, 3 and 4)

1	166B269	1	Plate, Breaker - Anti-Flicker.
2, 3, 4	160A584	1	Plunger, Breaker - Anti-Flicker - Includes Plunger, Guide and Diaphragm.
3	160A263	1	Diaphragm, Breaker Plunger.
5	160A513	1	Point Set, Anti-Flicker - Includes Two Stationery Points with #8-32 thread.
6	166A49	1	Dampener, Breaker Spring.
7	166A67	1	Strip, Breaker Spring Hold Down.
8	160B614	1	Cover, Breaker Plate.
9	160A515	1	Gasket, Breaker Plate Cover.
10			Lead, Shielded - Anti-Flicker Points to Control Box - Component of wiring harness.
11	332A593	1	Strip, Terminal.
	854-7	2	Washer, Lock - Internal Tooth - #8 - Anti-Flicker Breaker Points.
	812-79	2	Screw, Round Head Machined - #8-32 x 1/2" - Anti-Flicker Breaker Points.

FIG. 15 - AIR CLEANER AND HEATER GROUP

NOTE: Glow Plug appears in Cylinder Head Group.

1			Heater, Air - Complete.
	140B166	1	For plants with Parts Key Nos. 1, 2 and 3.
	140B275	1	For plants with Parts Key Nos. 4, 5 and 7.
	140B423	1	For plants with Parts Key No. 6.
2	140A156	1	Gasket, Heater Mounting.
3	140B157	1	Adapter, Air Cleaner - With provision for heater.
4	154A460	1	Gasket, Intake Manifold to Head.
5	154C469	1	Manifold, Air Intake.
6	520A553	2	Stud, Intake Manifold - 3/8 x 2-1/4".
7	154A104	2	Gasket, Air Cleaner Adapter to Manifold.
8	154A105	1	Screen, Air Cleaner Adapter to Manifold.
9	140C300	1	Cleaner, Air (Silencer) Dry type.
10	154A43	1	Gasket, Air Cleaner to Adapter.

REF. NO.	PART NO.	QUANT. USED	DESCRIPTION
FIG. 16 - CONTROL PANEL GROUP			
1			Resistor, Fixed.
	304P32	1	For plants with Parts Key Nos. 1, 2 and 3 (Decompression Solenoid) 15 Ohm, 10 Watt.
	304A33	1	For plants with Parts Key Nos. 1, 2 and 3 (High Charge Rate Circuit) 1.5 Ohm, 50 Watt.
	304A44	1	For plants with Parts Key Nos. 1, 2 and 3 (Low Charge Rate Circuit) 2.5 Ohm, 50 Watt.
	304A262	1	For plants with Parts Key No. 4 (Glow Plug) 50 Ohm, 10 Watt.
	304A257	1	For plants with Parts Key No. 4 (Low Charge Rate Circuit) 75 Ohm, 25 Watt.
	304A45	1	For plants with Parts Key No. 4 (3/4" x 4") 4 Ohm, 50 Watt.
	304-240	1	For plants with Parts Key No. 5 (Off Pre Heat Relay in Wall Mounted Box) 600 Ohm, 25 Watt.
	304A161	1	For plants with Parts Key No. 5 (Off Start Solenoid in Wall Mounted Box) 250 Ohm, 25 Watt.
	304A11	1	For plants with Parts Key No. 6 (Decompression Solenoid) 50 Ohm, 25 Watt.
	304A112	1	For plants with Parts Key No. 7 (Decompression Solenoid) 100 Ohm, 25 Watt.
2			Resistor, Adjustable - Anti-Flicker.
	304A175	1	For plants with Parts Key Nos. 1, 2 and 3 (1-Ohm, 50 Watt) - Replaces #304A51.
	304A16	1	For plants with Parts Key No. 4 (2.5 Ohm, 50 Watt).
3	304B428	1	Resistor, Cone Type (Manifold Heater) For plants with Parts Key No. 5 (13.87 Ohm, 600 Watt).
4	312A57	1	Condenser, Anti-Flicker (1. Mfd) For plants with Parts Key Nos. 1, 2, 3 and 4.
5			Harness Assembly, Wiring.
	338B193	1	For plants with Parts Key Nos. 1, 2 and 3.
	338B195	1	For plants with Parts Key No. 4.
	338B150	1	For plants with Parts Key No. 6.
	338B197	1	For plants with Parts Key No. 7.
5A	335B37	1	For plants with Parts Key No. 5 (Cables and Conduit).
6	308-37	1	Switch, Pre-heat.
7			Relay, Reverse Current.
	307B180	1	For plants with Parts Key Nos. 1, 2 and 3.
	307B496	1	For plants with Parts Key No. 4 (Replaces #307B108).
7A	307B84	1	For plants with Parts Key No. 5.
	307B7	1	For plants with Parts Key No. 6.
	307B361	1	For plants with Parts Key No. 7.
8	332A572	1	Clip, Wire Harness - For plants with Parts Key No. 6 (Replaces #332A459).

REF. NO.	PART NO.	QUANT. USED	DESCRIPTION
FIG. 16 - CONTROL PANEL GROUP (Cont.)			
9			Ammeter, Charge.
	302A58	1	For plants with Parts Key Nos. 1, 2 and 3 (10-0-10).
	302A61	1	For plants with Parts Key No. 4 (30-0-30).
	302A64	1	For plants with Parts Key Nos. 6 and 7 (100-0-100).
10	308P7	1	Switch, Hi-Low Charge Rate - For plants with Parts Key Nos. 1, 2, 3 and 4.
11	308-26	1	Switch, Start-Stop - For plants with Parts Key Nos. 1, 2, 3, 4, 6 and 7.
12	308A29	1	Switch, Start - For plants with Parts Key No. 5.
13			Rheostat.
	303-102	1	For plants with Parts Key No. 5.
	303-46	1	For plants with Parts Key No. 6.
	303-10	1	For plants with Parts Key No. 7.
14			Knob, Rheostat.
	303-32	1	For plants with Parts Key No. 5.
	303-47	1	For plants with Parts Key Nos. 6 and 7.
15			Box Only, Control.
	301D1584	1	For plants with Parts Key Nos. 1, 2, 3 and 4.
	301D1401	1	For plants with Parts Key No. 6.
	301D1587	1	For plants with Parts Key No. 7.
	301C1692	1	For plants with Parts Key No. 5 (Start-Switch Box) Plant Mounted.
15A	301C930	1	For plants with Parts Key No. 5 (Battery Charging Box) Wall Mounted.
			Bracket, Control Box Mounting.
16	301B1585	2	For plants with Parts Key Nos. 1, 2, 3, 4 and 7.
16A	301B1678	1	For plants with Parts Key No. 5 (For Mounting Start-Switch Box).
16B	301B1403	1	For plants with Parts Key No. 6.
17	301B1573	1	Bracket, Control Box Mounting Support - For plants with Parts Key Nos. 1, 2, 3, 4 and 7.
18			Box, Junction.
	301C1590	1	For plants with Parts Key Nos. 1, 2, 3 and 4.
	301D1593	1	For plants with Parts Key No. 7.
19			Cover, Junction Box.
	301B1589	1	For plants with Parts Key Nos. 1, 2, 3 and 4.
	301B1594	1	For plants with Parts Key No. 7.

REF. NO.	PART NO.	QUANT. USED	DESCRIPTION
FIG. 16 - CONTROL PANEL GROUP (Cont.)			
22	402-78	4	Cushion, Control Mounting - Rubber.
23	332A602	1	Strap, Jumper - Solenoid - For plants with Parts Key Nos. 1, 2 and 3.
24	332-53	2	Clip, Harness (Tinnerman).
25	332A572	1	Clip, Harness (Steel).
26	160A144	2	Strap, Resistor Jumper - For plants with Parts Key Nos. 1, 2, 3 and 4.
27	301B1404	1	Bracket, Rheostat Mounting - For plants with Parts Key No. 6.
28	304A185	1	Block, Resistor Insulating - For plants with Parts Key No. 5.
29	336A1174	1	Lead, Glow Plug.
30	301A820	1	Bracket, Resistor Block Mounting - For plants with Parts Key No. 5.
			Relay, Pre-Heat.
32	307B81	1	For plants with Parts Key No. 4.
33	307B363	1	For plants with Parts Key No. 6.
	307B247	1	For plants with Parts Key Nos. 5 and 7.
34	321P7	1	Post, Fuse - For plants with Parts Key Nos. 5, 6 and 7.
35	321-17	1	Block, Fuse - For plants with Parts Key No. 5 (In Wall Mounted Box).
36			Fuse.
	321-38	1	For plants with Parts Key No. 5 (10 Amp) In Plant Mounted Box.
	321-27	1	For plants with Parts Key Nos. 6 and 7 (15 Amp).
37	321-18	1	For plants with Parts Key No. 5 (40 Amp) In Wall Mounted Box.
38	307B4	1	Relay, Decompression Release Solenoid - For plants with Parts Key Nos. 1, 2, 3, 4, 6 and 7.
39			Solenoid, Start.
	307B40	1	For plants with Parts Key Nos. 1, 2 and 3.
	307B61	1	For plants with Parts Key Nos. 4, 6 and 7.
	307P479	1	For plants with Parts Key No. 5.
39A	307B40	1	Solenoid, Pre-heat - For plants with Parts Key Nos. 1, 2 and 3.
			Block, Terminal.
40	332A604	1	5 Place - For plants with Parts Key Nos. 1, 2, 3 and 4.
41	332A254	2	4 Place - For plants with Parts Key No. 5 (1) Plant Mounted Box, (1) Wall Mounted Box.
41	332A537	1	4 Place - For plants with Parts Key Nos. 6 and 7.
42	332A406	1	3 Place - For plants with Parts Key No. 6.
43	332A231	1	2 Place - For plants with Parts Key No. 5 (In Wall Mounted Box).

REF. NO.	PART NO.	QUANT. USED	DESCRIPTION
-------------	-------------	----------------	-------------

FIG. 16 - CONTROL PANEL GROUP (Cont.)

45	332A566	1	Strip, Marker - Terminal Block.
46	332A426	1	4 Place Block (marked B+, 1, 2, 3) Note: B+ not used. For plants with Parts Key No. 6.
47			3 Place Block (marked 5, 6, F2) For plants with Parts Key No. 6.
	508-9	As Req.	Grommet, Rubber.
	508-8	As Req.	1" I.D. for 1-5/16" Hole.
	508-1	As Req.	1/2" I.D. for 7/8" Hole.
			3/4" I.D. for 1-1/16" Hole.
48	301B271	1	Backplate, Control - For plants with Parts Key No. 5.
49	301C1677	1	For Wall Mounted Box (Battery Charging).
50	312A17	1	For Plant Mounted Box (Start-Switch).
51	302-355	1	Condenser (In Wall Mounted Box) For plants with Parts Key No. 5.
			Ammeter, DC Output (0-25) For plants with Parts Key No. 5.

FIG. 17 - GENERATOR GROUP

1			Brush, Slip Ring (AC).
	214A50	4	For plants with Parts Key Nos. 1 and 4.
	214A62	3	For plants with Parts Key No. 2.
	214A32	3	For plants with Parts Key No. 3.
2			Brush, Commutator (DC).
	214A61	4	For plants with Parts Key No. 1.
	214A30	4	For plants with Parts Key Nos. 2 and 3.
	214A9	4	For plants with Parts Key No. 4.
	214A65	4	For plants with Parts Key No. 5.
	214A68	4	For plants with Parts Key No. 7.
	214A18	4	For plants with Parts Key No. 6.
3			Spring, Brush - Constant Pressure Type.
	212B1105	4	For plants with Parts Key No. 5.
	212B1105	8	For plants with Parts Key Nos. 1 and 4.
	212B1106	4	For plants with Parts Key No. 7.

REF. NO.	PART NO.	QUANT. USED	DESCRIPTION
-------------	-------------	----------------	-------------

FIG. 17 - GENERATOR GROUP (Cont.)

4			Spring, Brush - Conventional Type.
	212A1003	4	For Commutator Brush on plants with Parts Key Nos. 2 and 3.
	212A1011	4	For Commutator Brush on plants with Parts Key No. 6.
	212A1004	3	For Slip Ring Brush on plants with Parts Key Nos. 2 and 3.
5	232A268	1	Coupling, Armature Drive.
6			Armature Assembly - Includes Bearing and Drive Coupling.
	201A278	1	For 115 Volt, 60 Cycle plants with Parts Key No. 1 (1R).
	201A332	1	For 230 Volt, 60 Cycle plants with Parts Key No. 1 (2R).
	201A375	1	For 115 Volt, 50 Cycle plants with Parts Key No. 1 (51R).
	201A343	1	For 230 Volt. 50 Cycle plants with Parts Key No. 1 (52R).
	201A333	1	For 60 Cycle plants with Parts Key No. 2.
	201A887	1	For 50 Cycle plants with Parts Key No. 2.
	201A888	1	For 60 Cycle plants with Parts Key No. 3.
	201A890	1	For 50 Cycle plants with Parts Key No. 3.
	201A533	1	For plants with Parts Key No. 4 - Prior to Spec "E".
	201A1057	1	For plants with Parts Key No. 4 - Begin Spec "E".
	201A952	1	For plants with Parts Key No. 5.
	201A832	1	For plants with Parts Key No. 6.
	201A931	1	For plants with Parts Key No. 7.
7	510A47	1	Bearing, Ball - Armature.
8	232A596	1	Clip, Armature Bearing Stop.
9			Stud, Armature Thru.
	520A350	1	For plants with Parts Key Nos. 1 and 4 - (7/16 x 16-1/8").
	520A407	1	For plants with Parts Key Nos. 2 and 3 - (7/16 x 17-3/4").
	520A566	1	For plants with Parts Key Nos. 5 and 7 - (7/16 x 16-3/4").
	520A394	1	For plants with Parts Key No. 6 - (7/16 x 16-1/8").
10			Poleshoe, Field.
	221A91	4	For plants with Parts Key Nos. 1, 2, 3 and 4.
	221A126	4	For plants with Parts Key Nos. 5 and 7.
	221B56	4	For plants with Parts Key No. 6.

REF. NO.	PART NO.	QUANT. USED	DESCRIPTION
FIG. 17 - GENERATOR GROUP (Cont.)			
10A			Poleshoe, Interpole.
	221A129	2	For plants with Parts Key No. 5.
	221A77	2	For plants with Parts Key No. 6.
	221A127	2	For plants with Parts Key No. 7.
11			Coil assembly, Field - Set of 4 Coils.
	222A1518	1	For plants with Parts Key Nos. 1, 2 and 3.
	222A1520	1	For plants with Parts Key No. 4 - Prior to Spec "E".
	222A1568	1	For plants with Parts Key No. 4 - Begin Spec "E".
	222A1536	1	For plants with Parts Key No. 5.
	222A1471	1	For plants with Parts Key No. 6.
	222A1522	1	For plants with Parts Key No. 7.
11A			Coil Assembly, Interpole - Set of 2.
	222A1523	1	For plants with Parts Key No. 7.
	222A1472	1	For plants with Parts Key No. 6.
	222A1537	1	For plants with Parts Key No. 5.
12			Frame only, Generator.
	210D278	1	For plants with Parts Key Nos. 1, 2, 3 and 4.
	210D296	1	For plants with Parts Key Nos. 5 and 7.
	210D275	1	For plants with Parts Key No. 6.
13			Condenser
			0.5 Mfd. - DC Brush Suppression.
	312A27	1	For plants with Parts Key Nos. 1, 2, 3 and 4.
	312A17	1	For plants with Parts Key No. 7.
			0.1 Mfd. - AC Brush Suppression.
	312A15	1	For plants with Parts Key Nos. 1 and 4.
	312A15	2	For plants with Parts Key No. 2.
	312A15	3	For plants with Parts Key No. 3.
14			Rig Assembly, Brush - Includes Brushes and Springs.
	212C225	1	For plants with Parts Key No. 1.
	212C224	1	For plants with Parts Key No. 2.
	212C235	1	For plants with Parts Key No. 3.
	212C249	1	For plants with Parts Key No. 4.
	212C237	1	For plants with Parts Key No. 5.
	212C116	1	For plants with Parts Key No. 6.
	212C244	1	For plants with Parts Key No. 7.