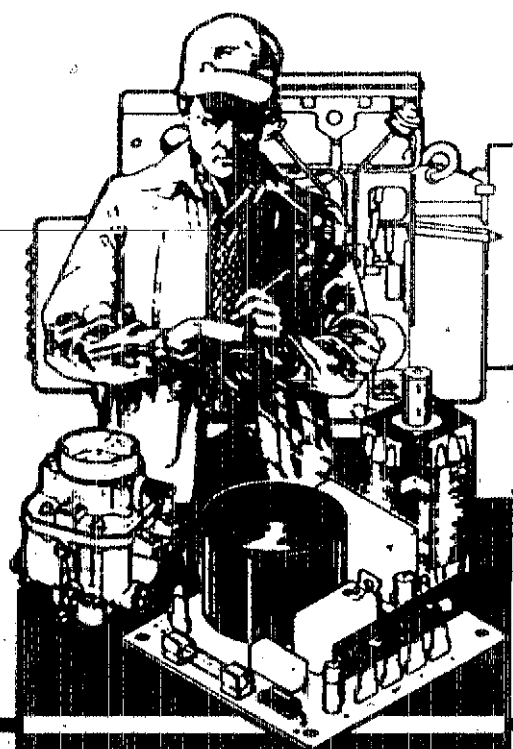

Onan

Parts Manual

D G E A

D G F A

GenSet



Onan Service Parts

960-0244

1-888-888-8888 (Spec A)
Printed in U.S.A.

Redistribution or publication of this document
by any means, is strictly prohibited.

Index

	GRID		GRID
Actuator, Governor	A8	Indicator, Service - Air Cleaner	A13
Adapter, Exhaust	A7	Light, Indicator	B13
Belt, End - Generator	B3	Line, Fuel - Filter	A10
Box, Entrance	C4	Meter, Ampere	B13
Breaker, Circuit	B13	Meter, Frequency	B13
Cable, Jumper	A8	Meter, Tach	B11
Cap, Radiator	A11	Meter, Time - Running	B11
Cap, Rain - Exhaust	A7	Meter, Volt	B11, B13
Chassis	A14	Meter, Water	B13
Cleaner, Air	A13	Muffler, Exhaust	A7
Control, Engine	B1	Pinup, Magnetic	B9
Control, Generator	B13	Radiator	A11
Cooling System	A11	Rotor, Exciter	B3
Drain, Oil	A6	Rotor, Exciter - Components	B5
Exhaust System	A7	Rotor, Generator	B3
Fan, Cooling	A11, B3	Sender, Pressure - Oil	A6
Filter, Air	A13	Sender, Temperature - Oil	A6
Gasket, Drain - Oil	A6	Sender, Temperature - Coolant	A6
Gauge, Pressure - Oil	B11	Silencer	A7
Gauge, Temperature - Oil	B11	Stator, Exciter	B3
Gauge, Temperature - Water	B11	Stator, Generator	B3
Generator	B3	Suppressor, Voltage	B6
Governor, Electronic	A8	Switch, Level - Coolant	A11
Guard, Belt	A11	Switch, Overspeed	B7, B9, B10
Guard, Fan	A11	Switch, Pressure - Oil	A6
Harness, Wiring - Control (AC)	B13	Switch, Push - Reset/Label	B11
Harness, Wiring - Control (DC)	B11	Switch, Push - Run/Stop/Remote	B11
Harness, Wiring - Control To Engine	B11	Switch, Rotary - Generator Control	B13
Harness, Wiring - Lo Coolant Level	A11	Switch, Temperature - H ₂ Coolant	A6
Heater, Control	C5, C6	Switch, Temperature - Pre-Coolant	A6
Heater, Coolant - Engine	A9	Thermostat, Heater - Water	A9
Heater, Generator	B7, B8	Transformer, Current	C1, C2
Heater, Water	A9	Valve, Drain - Oil	A6
Hose, Drain - Oil	A6		
Hose, Radiator	A11, A13		
Housing, Control	C3		
Housing, Set	B1		

Introduction

This Part applies to the Standard Sets Listed below. The illustrations are arranged in groups of related items, and each part or assembly is identified by a Reference Number. All parts illustrated are typical, and unless otherwise mentioned in the description column the parts are interchangeable between models.

These typical illustrations are subject to change and reflect only the latest replacement parts arrangement. The Right and Left sides of the Set are determined by FACING the FRONT (Engine end) of the Set.

Set Data Table

MODEL IDENTIFICATION	RATING	RPM RATING	BATTERY VOLTAGE
100 0 DGFA - */ ● ●	100,000 WATTS	1500 RPM	24 VDC
125 0 DGFA - */ ● ●	125,000 WATTS	1800 RPM	24 VDC
125 0 DGFA - */ ● ●	125,000 WATTS	1500 RPM	24 VDC
150 0 DGFA - */ ● ●	150,000 WATTS	1800 RPM	24 VDC

Electrical Data Table

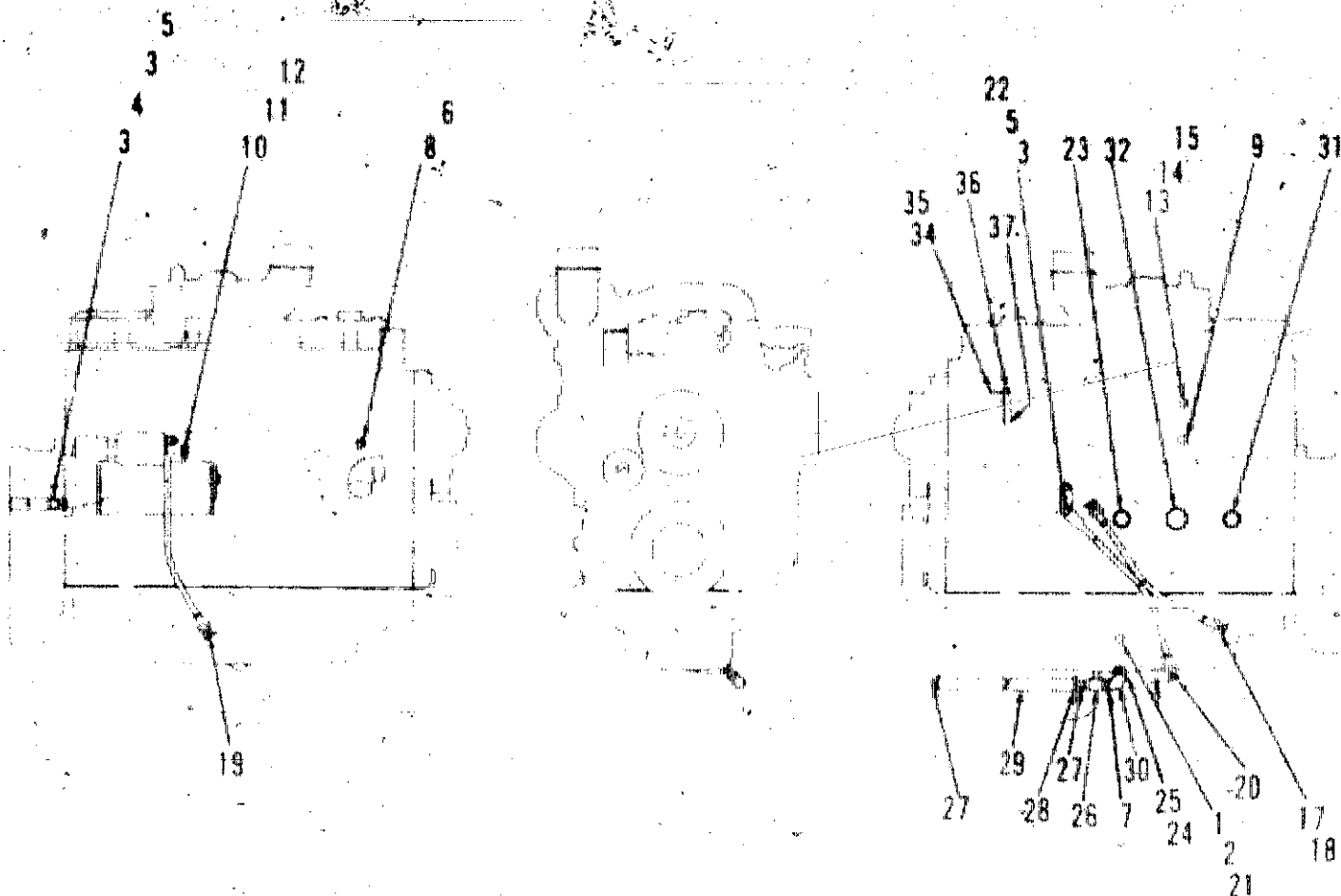
*VOLTAGE CODE	VOLTAGE	HERTZ	WIRE	PHASE	NOTES
E (6D)	240/480	60	4	3	
H (9X)	347/600	60	4	3	
L (15R)	208/240/480	60	12	3	+
Z (515R)	208/240/480	50	12	3	+

- * - Voltage Codes follow Model Letter designations
- # - Specification Number: Number 1 is Standard, all others indicate variations
- @ - Specification Letter: Letter advances (A to B, B to C, etc) with major manufacturing changes
- + - These Generators are Reconnectible. Refer To Installation Manual for wiring data

Maintenance Engine Parts

REF NO	PART NO	QTY USED	PART DESCRIPTION	REF NO	PART NO	QTY USED	PART DESCRIPTION
1	187-0022	1	Filter, Oil	6	187-0028	1	Thermostat
2	187-0011	1	Filter, Fuel	7	187-0029	1	Gasket, Thermostat
3	187-0012	1	Filter, Fuel	8	187-0024	1	Injector
4	187-0025	6	Gasket, Cover - Valve	9	187-0023	1	Gasket Kit, End - End
5	187-0026	1	Belt, Drive	10	187-0027	1	Pump, Transfer - Fuel

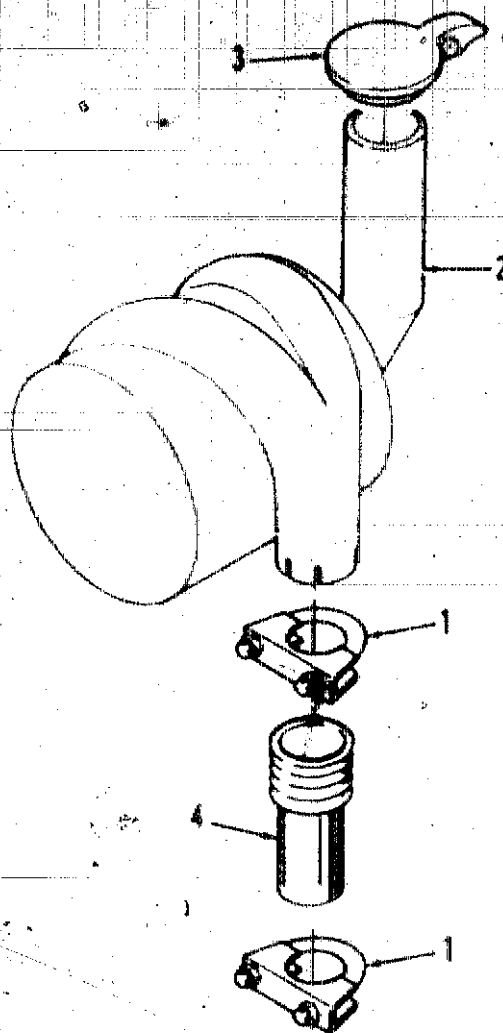
Engine Accessories



REF NO.	PART NO.	QTY USED	PART DESCRIPTION
1	193-0353	1	Sender, Temperature - Oil
2	187-0146	1	Washer, Sealing
3	856-0013	3	Washer, Lock - EIT (1/2")
4	332-2739	1	Bracket, Terminal
5	800-2110	2	Screw, Cap - Hex Head (M12 x 1.75 x 20mm)
6	309-0554	1	Switch, Temperature - High Coolant
7	505-0100	1	Nipple, Close (1/2 x 1-1/8")
8	505-0021	1	Bushing, Reducer (3/4 x 1/2")
9	309-0553	1	Switch, Temperature - Pre-Coolant
10	800-2058	1	Screw, Cap - Hex Head (M8 x 1.25 x 25mm)
11	850-2008	1	Washer, Lock (M8)
12	309-0289	1	Switch, Temperature - Low Engine
13	193-0375	1	Sender, Temperature - Coolant
14	526-0008	1	Washer, Flat (#10)
15	850-0030	1	Washer, Lock (#10)
16	871-0010	1	Nut, Cap - Hex Head (#10-32")
17	416-0923	1	Cable, Jumper
19	416-0915	1	Cable, Positive

REF NO.	PART NO.	QTY USED	PART DESCRIPTION
20	416-0619	1	Cable, Negative
21	505-1373	1	Bushing, Reducer (M22 x 1.5")
22	850-2012	1	Washer, Lock (M12)
23	309-0272	1	Switch, Pressure - (Pre Low Oil Pressure)
24	102-1147	1	Gasket, Drain - Oil Pan
25	102-1237	1	Adapter, Drain - Oil (M18 x 1.5")
26	504-0011	1	Valve, Shutoff (1/2")
27	505-0185	2	Nipple, Half (1/2 x 1.50")
28	503-0197	2	Clip, Hose - Corbin
29	503-0098	1	Hose, Drain (20.0")
30	505-0040	1	Elbow, 90° (1/2")
31	309-0169	1	Switch, Pressure (Low Oil Pressure)
32	193-0244	1	Sender, Pressure - Oil
34	718-1027	1	Screw, Cap - Hex Head (M6 x 1 x 50mm)
35	860-2007	1	Nut, Hex (M6 x 1)
36	150-2252	1	Bracket, Governor
37	718-1021	2	Screw, Cap - Hex Head (M6 x 1 x 20mm)

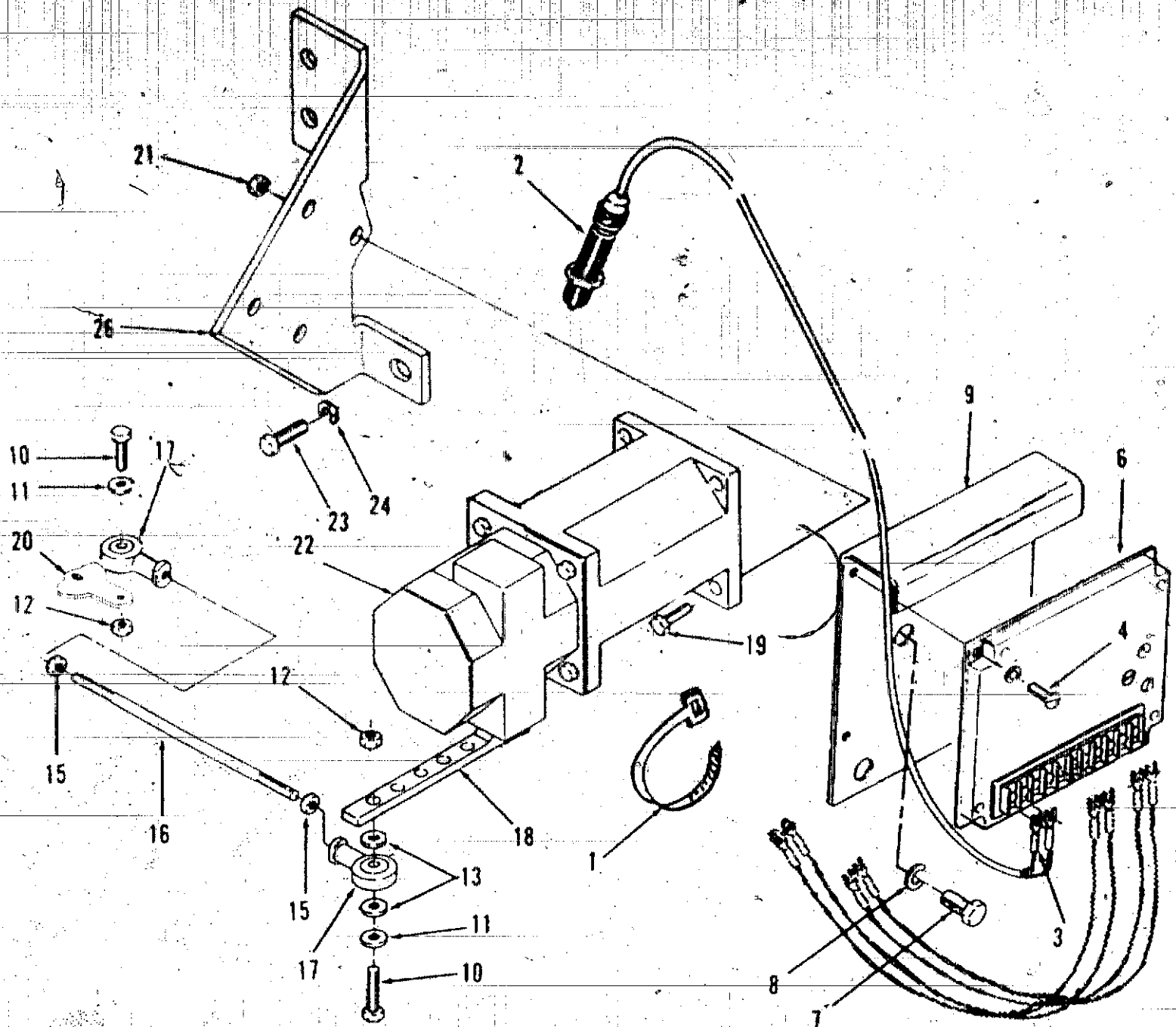
Exhaust System



REF NO	PART NO	QTY USED	PART DESCRIPTION
1	155-2305	1	Clamp Muffler
2	155-2306	1	Silencer
	155-2307	1	DGEA
		1	DGFA

REF NO	PART NO	QTY USED	PART DESCRIPTION
3	155-2062-07	1	Cap Rain
4	155-2304	1	Adapter Exhaust

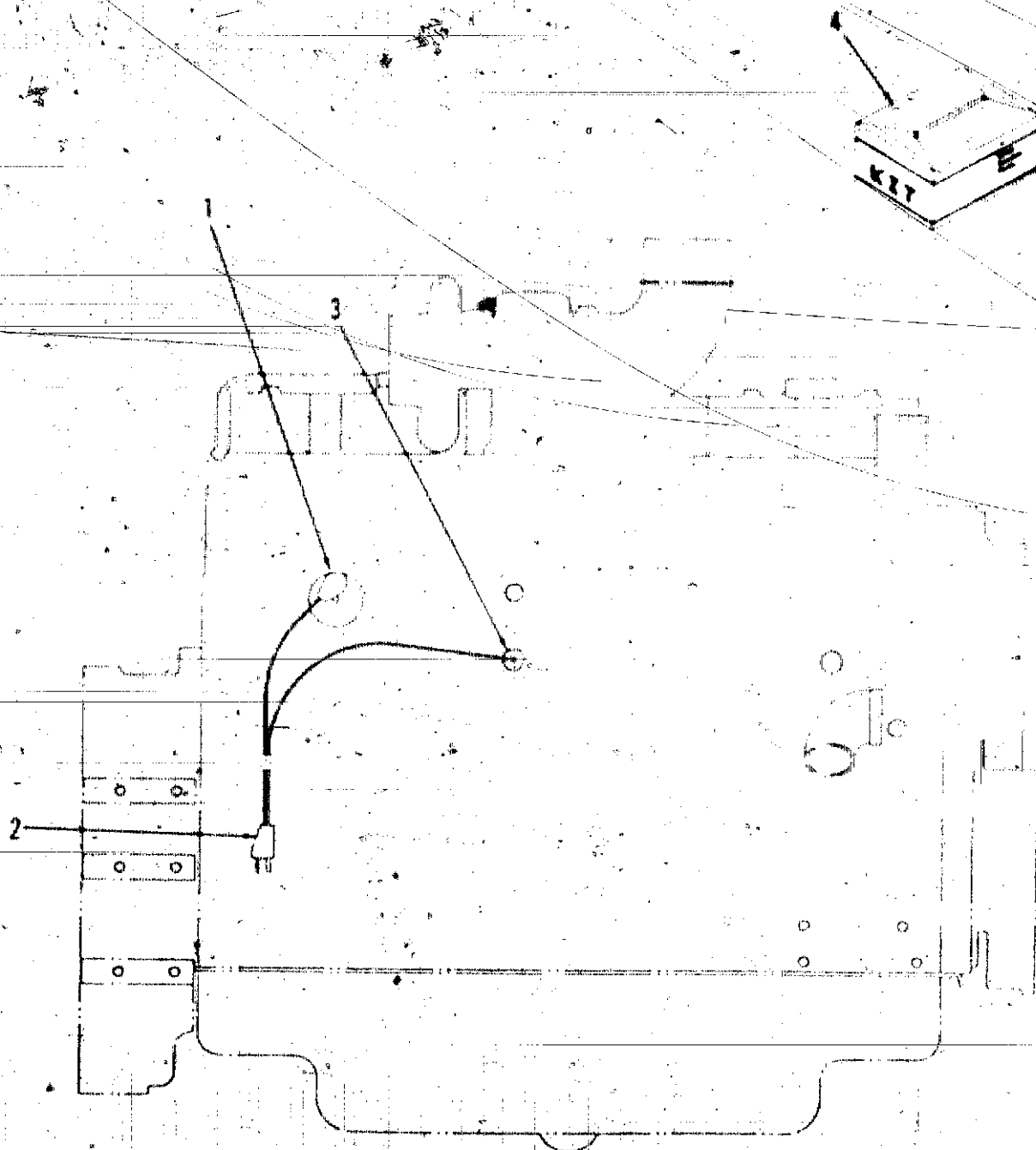
Electronic Governor



REF NO.	PART NO.	QTY USED	PART DESCRIPTION
1	332-1445	5	Tie, Cable
2	150-2201	1	Sensor, Speed - Magnetic
3	332-1279	2	Terminal, Speed (#6)
4	413-0103	4	Screw, Machine - Round Head (#10 - 32 x 3/4")
5	870-0131	4	Nut, Lock - W/ET (#10-32) - Not Used on All Installations
6	151-0611	1	Control, Governor
7	800-2110	2	Screw, Cap - Hex Head (M12 x 1.75 x 20mm)
8	850-2012	2	Washer, Lock (M12)
9	150-2007	1	Bracket, Controller
10	815-0172	2	Screw, Machine - Hex Head (#10 - 32 x 1.00")
11	526-0327	2	Washer, Flat (15/64)
12	870-0131	1	Nut, Hex W/ET (#10 - 32)

REF NO.	PART NO.	QTY USED	PART DESCRIPTION
13	526-0008	4	Washer, Flat (#10)
15	870-0053	2	Nut, Screw - Hex Head (#10 - 32)
16	150-2218-03	1	Rod, Governor
17	150-2251	2	End, Rod
18	150-2203	1	Lever, Actuator - Governor
19	800-0008	4	Screw, Cap - Hex Head (1/4 - 20 x 1-1/4")
20	150-2237	1	Lever, Governor
21	870-0212	4	Nut, Lock (1/4 - 20)
22	151-0612	1	Actuator, 24V
23	800-2085	3	Screw, Cap - Hex Head (M10 x 1.50 x 20mm)
24	850-2010	3	Washer, Lock (M10)
26	150-2238	1	Bracket, Governor

Water Heater



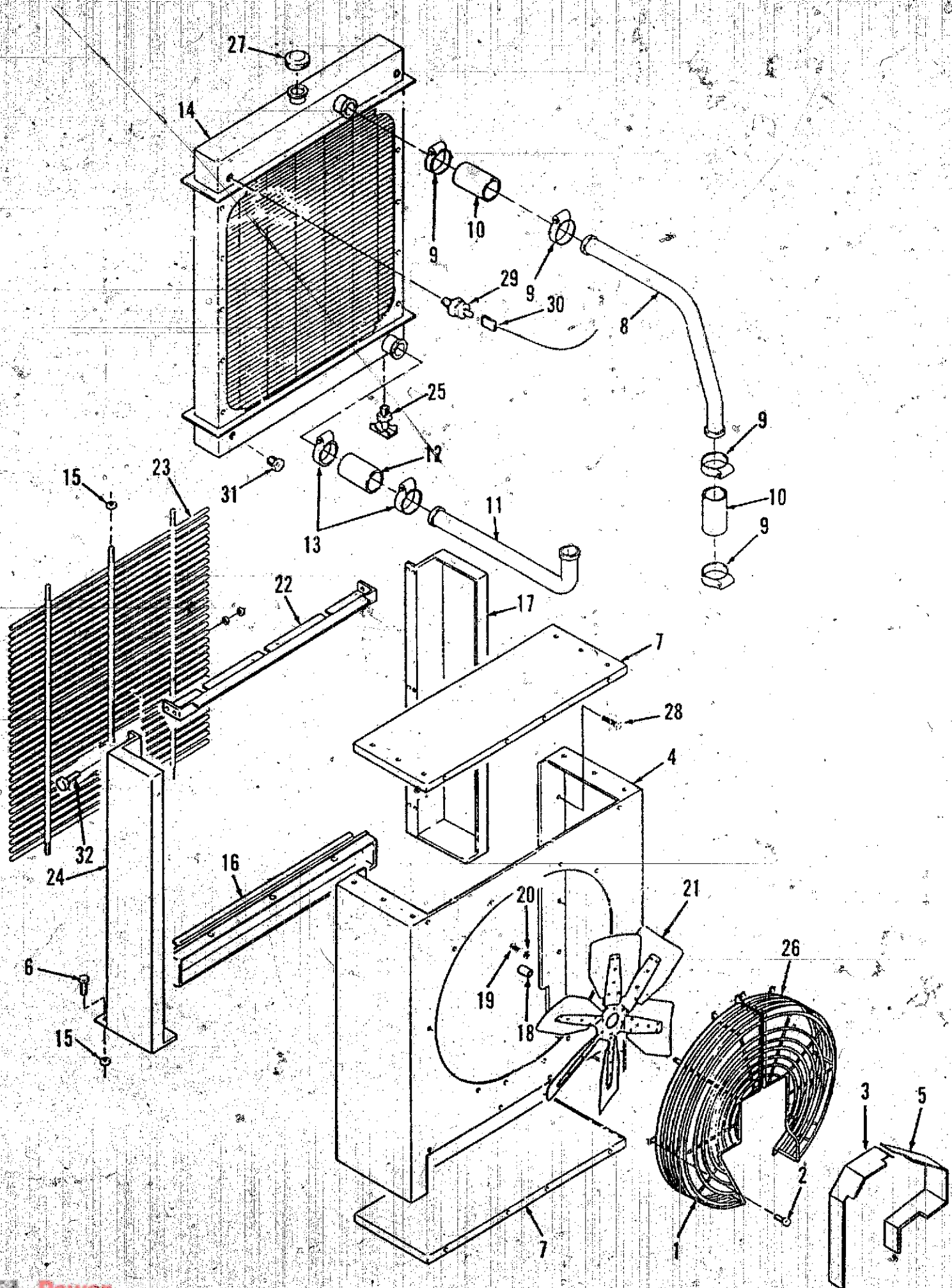
REF. NO.	PART NO.	QTY USED	PART DESCRIPTION	REF. NO.	PART NO.	QTY USED	PART DESCRIPTION
1	333-0391	1	*Heater, Electrical - 1500 Watt	3	809-0555	1	*Thermostat
	333-0392	1	120 Volts	4			Heater Kit (Includes Parts Marked *)
2			*Cord, Electrical		333-0393-01	1	120 Volts
	335-0162	1	120 Volts		333-0393-02	1	240 Volts
	335-0163	1	240 Volts				

* - Parts included in Heater Kit

Miscellaneous Parts

REF NO.	PART NO.	QTY USED	PART DESCRIPTION	REF NO.	PART NO.	QTY USED	PART DESCRIPTION
1	98-0961	2	Decal Level - Coolant	6	501-0441	1	Line Fuel - Flex (1/4 Fuel In)
2	98-1003	2	Decal Drain - Coolant	7			
3	98-5393	2	Label Warning	8	332-0941	2	Cable Tie
4	98-2235	1	Decal Ground	9	503-0170	1	Clamp Hose
5	501-0480	1	Line Fuel - Flex (5/16 Fuel Out)	10	98-4500	2	Label Tested - Prototype

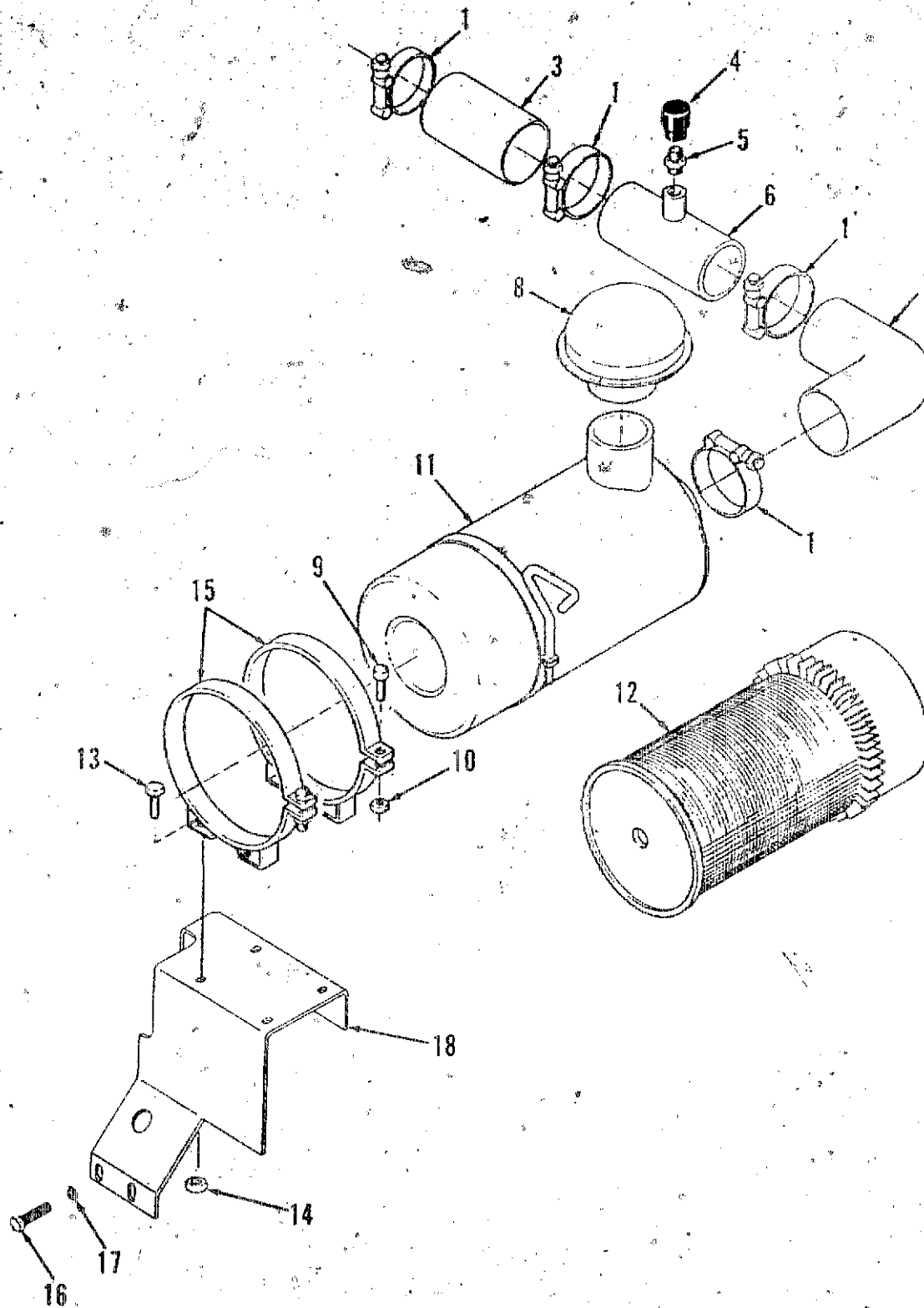
Cooling System



Cooling System

REF NO.	PART NO.	QTY USED	PART DESCRIPTION	REF NO.	PART NO.	QTY USED	PART DESCRIPTION
1	130-3209-01	1	Guard, Fan (RH)	18	130-3218	1	Spacer, Fan
2	821-0018	36	Screw, Lockhead (1/4 - 20 x .62")	19	800-2096	4	Screw, Cap - Hex Head (M10 x 1.5 x 75mm)
3	130-3217	1	Guard, Belt (RH)	20	850-2010	4	Washer, Lock (M10)
4	130-3205	1	Wrapper, Shroud - Fan	21	130-3208	1	Fan, Cooling
5	130-3218	1	Guard, Belt (LH)	22	130-3203	1	Support, Grille
6	821-0029	14	Screw, Lockhead (3/8 - 16 x .75")	23	130-3210	1	Grille
7	130-3206	2	Shroud, Fan	24	130-3202-01	1	Guard, Radiator (RH)
8	130-3211	1	Tube, Inlet - Radiator	25	504-0003	1	Cock, Drain
9	503-0465	4	Clamp, Hose	26	130-3209-02	1	Guard, Fan (LH)
10	503-1379-01	2	Hose, Radiator (2.25 ID)	27	130-1788	1	Cap, Radiator
11	130-3212	1	Tube, Outlet - Radiator	28	821-0028	16	Screw, Lockhead (3/8 - 16 x .50")
12	503-1599	1	Hose, Radiator (2.00 ID)	29	193-0322	1	Sender, Coolant - Low
13	503-0365	3	Clamp, Hose	30	338-1919	1	Harness, Wiring - Glow Coolant
14	130-3207	1	Radiator	31	502-0153	3	Plug, Pipe - Hex
15	870-0281	15	Nut, Lockhead (3/8 - 16)	32	821-0010	8	Screw, Lockhead (1/4 - 20 x .50")
16	130-3204	1	Support, Grille				
17	130-3202-02	1	Guard, Radiator (LH)				

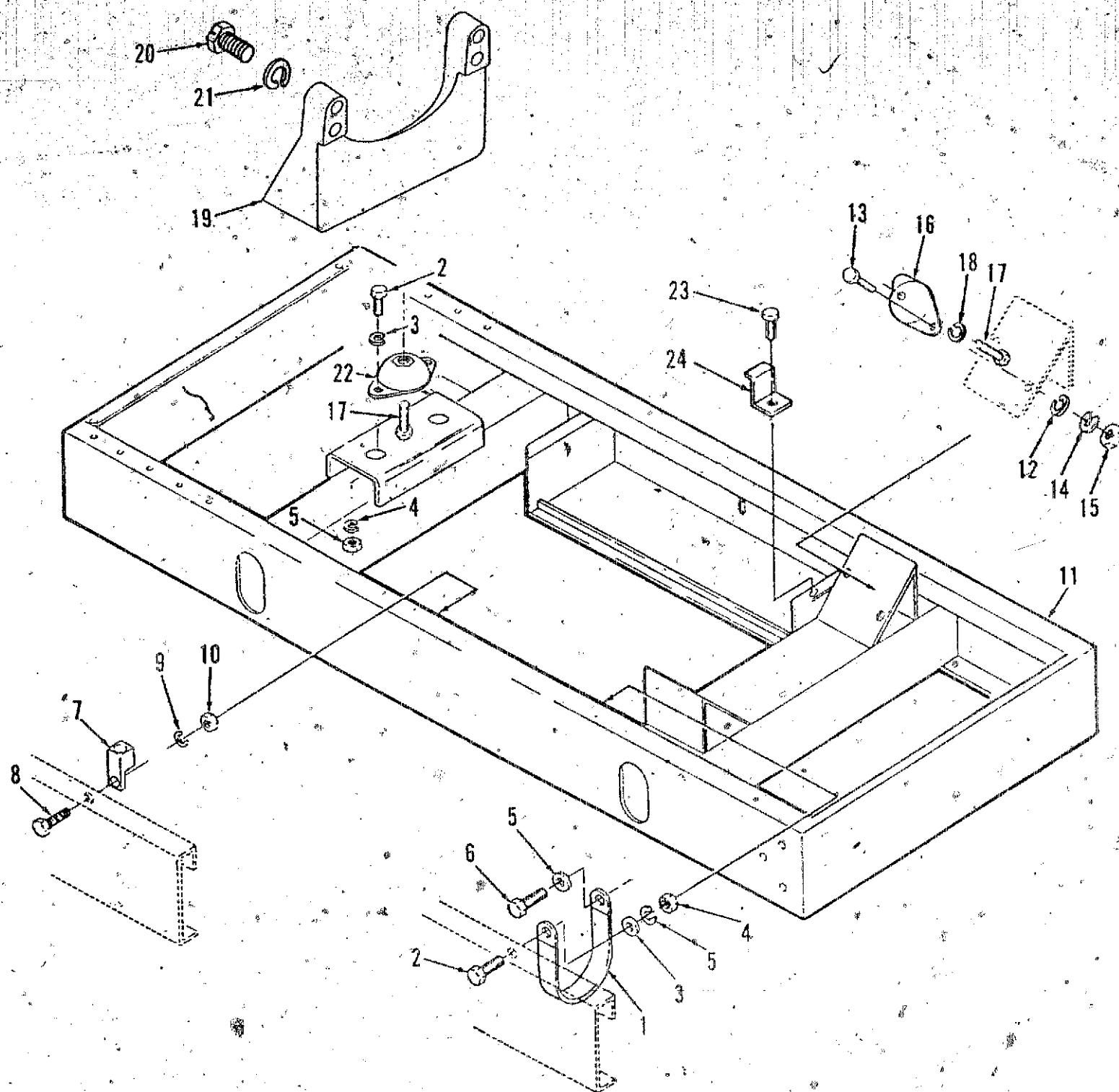
Air Cleaner



REF NO.	PART NO.	QTY USED	PART DESCRIPTION	REF NO.	PART NO.	QTY USED	PART DESCRIPTION
1	503-0900	4	Clamp, Hose	12	140-2241	1	Element, Cleaner Air
3	503-1595	1	Hose, Radiator	13	821-0029	4	Screw, Lockhead (3/8" x 16 x 3/4")
4	140-1548	1	Indicator, Service	14	870-0281	4	Nut, Lockhead (3/8 - 16)
5	140-1260	1	Adapter, Filter - Indicator	15	140-1973	2	Band, Mounting
6	140-2238	1	Tube, Inlet - Air	16	800-2110	3	Screw, Cap - Hex Head (M12 x 1.75 x 20mm)
7	503-1354	1	Elbow, Rubber - Molded	17	850-2012	3	Washer, Lock (M12)
8	140-1601	1	Hood, Inlet - Air	18	140-2239	1	Bracket, Mounting - Air Cleaner
9	815-0115	2	Screw, Machine - Fillister Head (1/4 - 20 x 1")				
10	863-0002	2	Nut, Square (1/4 - 20)				
11	140-2240	1	Cleaner, Air (Includes Element)				

Redistribution or publication of this document by any means, is strictly prohibited.

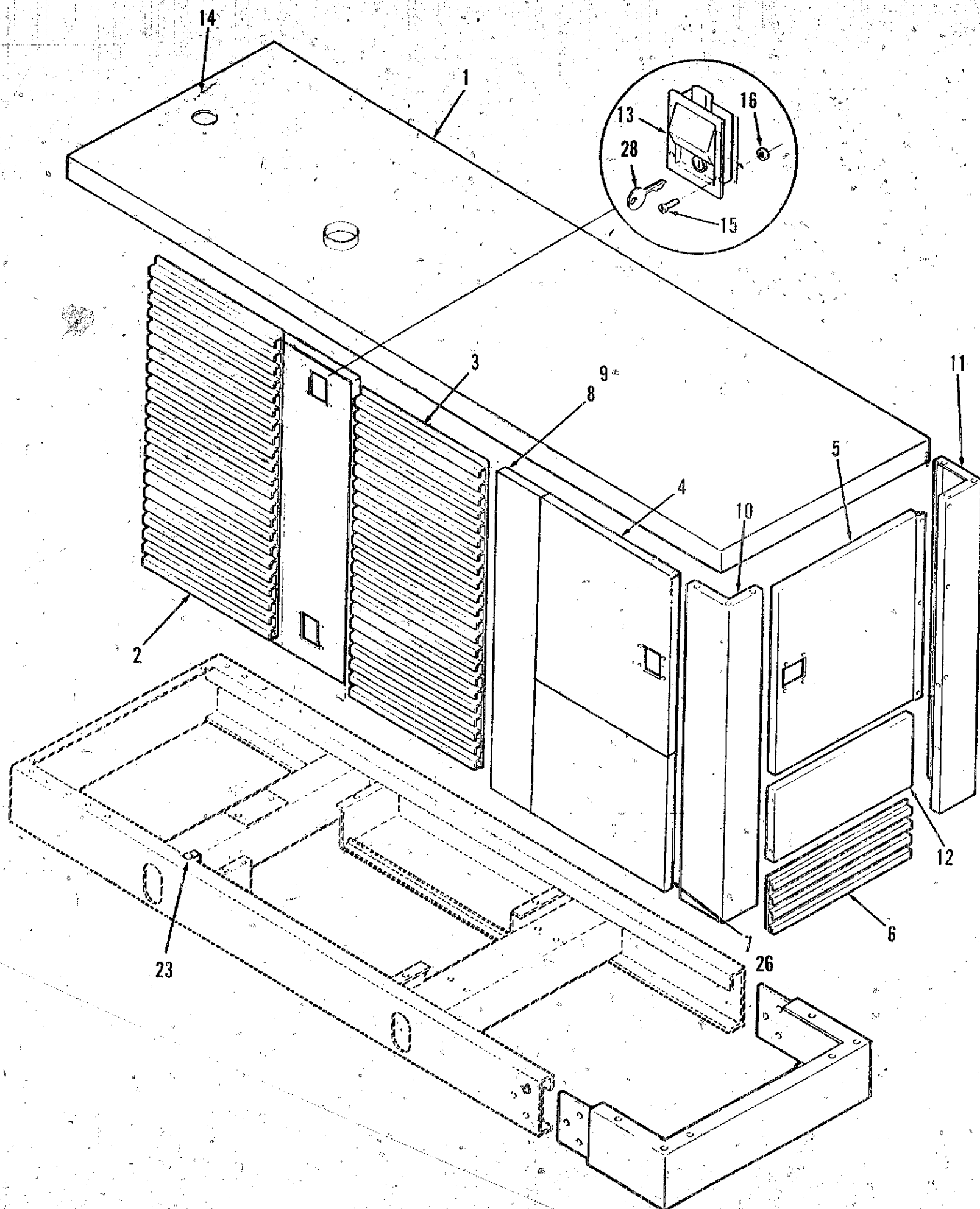
Chassis



REF NO.	PART NO.	QTY USED	PART DESCRIPTION	REF NO.	PART NO.	QTY USED	PART DESCRIPTION
1	337-0090	1	Strap, Electrical - Ground	14	850-0055	4	Washer, Lock (7/16")
2	800-0091	3	Screw, Cap - Hex Head (1/2 - 13 x 1.25")	15	862-0004	4	Nut, Hex (7/16 - 14")
3	850-0060	3	Washer, Lock (1/2")	16	402-0568	2	Cushion, Vibration
4	862-0016	3	Nut, Hex (1/2 - 13")	17	800-0520	3	Screw, Cap - Hex Head (3/4 - 10 x 1.00")
5	856-0013	2	Washer, Lock - EIT (1/2")	18	850-0079	3	Washer, Lock (3/4")
6	800-2111	1	Screw, Cap - Hex Head (M12 x 1.75 x 25mm)	19	403-2690	1	Support, Engine (Machined)
7	332-1473	1	Lug, Solderless	20	800-2124	4	Screw, Cap - Hex Head (M12 x 1.75 x 90mm)
8	800-0026	1	Screw, Cap - Hex Head (5/16 - 18 x 3/4")	21	850-2012	5	Washer, Lock (M12)
9	856-0008	1	Washer, Lock - EIT (5/16")	22	402-0030	1	Cushion, Vibration
10	870-0257	1	Nut, Hex - Lock (5/16 - 18")	23	800-0048	4	Screw, Cap - Hex Head (3/8 - 16 x 3/4")
11	403-2687	1	Base, Skid	24	416-0850	4	Bracket, Battery
12	526-0219	6	Washer, Flat (1/2")				
13	800-0071	4	Screw, Cap - Hex Head (7/16 - 14 x 1.00")				

Redistribution or publication of this document by any means, is strictly prohibited.

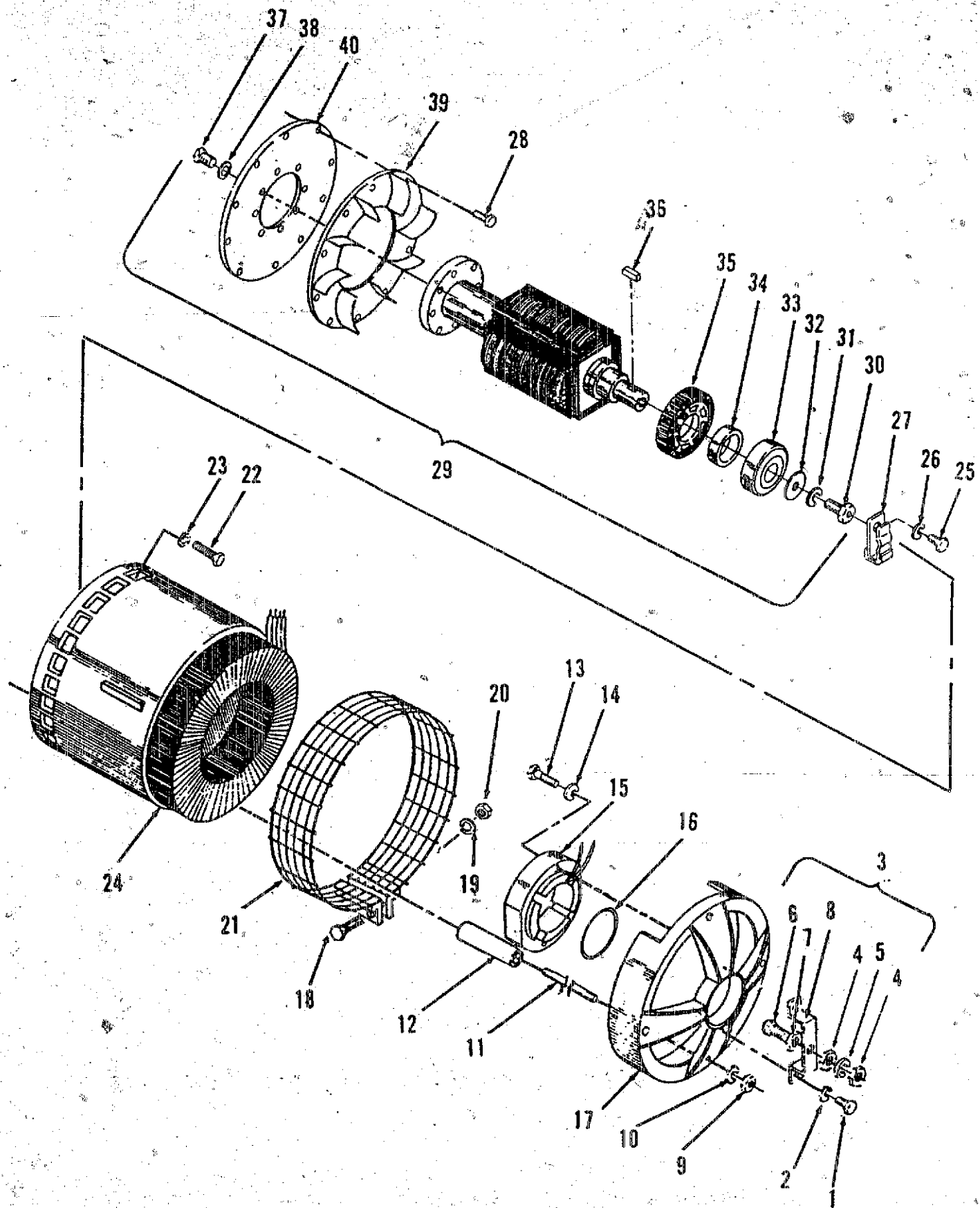
Set Housing



Set Housing

REF NO.	PART NO.	QTY USED	PART DESCRIPTION	REF NO.	PART NO.	QTY USED	PART DESCRIPTION
1	405-3967	1	Top, Housing		819-1083	15	Screw, Head - Pan (1/4 - 20 x .44")
2	405-3962	2	Door, Grille				
3	405-3961	2	Door, Grille		821-0014	8	Screw, Hex - Lock (5/16 - 18 x 1/2")
4	405-3950	2	Door, Side				
5	405-3952	1	Door, Control		870-0257	4	Nut, Lock - Hex (5/16 - 18)
6	405-3833	1	Grille		821-0029	22	Screw, Hex - Lock (3/8 - 16" x 3/4")
7	405-3984	1	Door, Access (RH)				
8	405-3963-01	1	Post, Housing (Center) (RH)		870-0281	18	Nut, Lock - Hex (3/8 - 16)
9	405-3963-02	1	Post, Housing (Center) (LH)		819-1102	20	Screw, Head - Pan (5/16 - 18 x 1/2")
10	405-3859-01	1	Post, Housing (Rear) (RH)				
11	405-3859-02	1	Post, Housing (Rear) (LH)	23	405-3980	2	Stop, Door - Housing
12	405-3828	1	Panel, Housing (Rear)		821-0018	4	Screw, Head - Lock (1/4 - 20 x .62")
13	406-0626	7	Handle, Housing				
14	98-5429	2	Decal, Fill - Coolant		870-0212	4	Nut, Hex - Lock (1/4 - 20)
15	815-0607	28	Screw, Hex - Oval (#8 - 32 x .38")	26	405-3985	1	Door, Access (LH)
					128-0116	1	Insulation, Foam
16	870-0235	28	Nut, Lock (#8 - 32)	28	406-0639	1	Key, Handle - Door

Generator

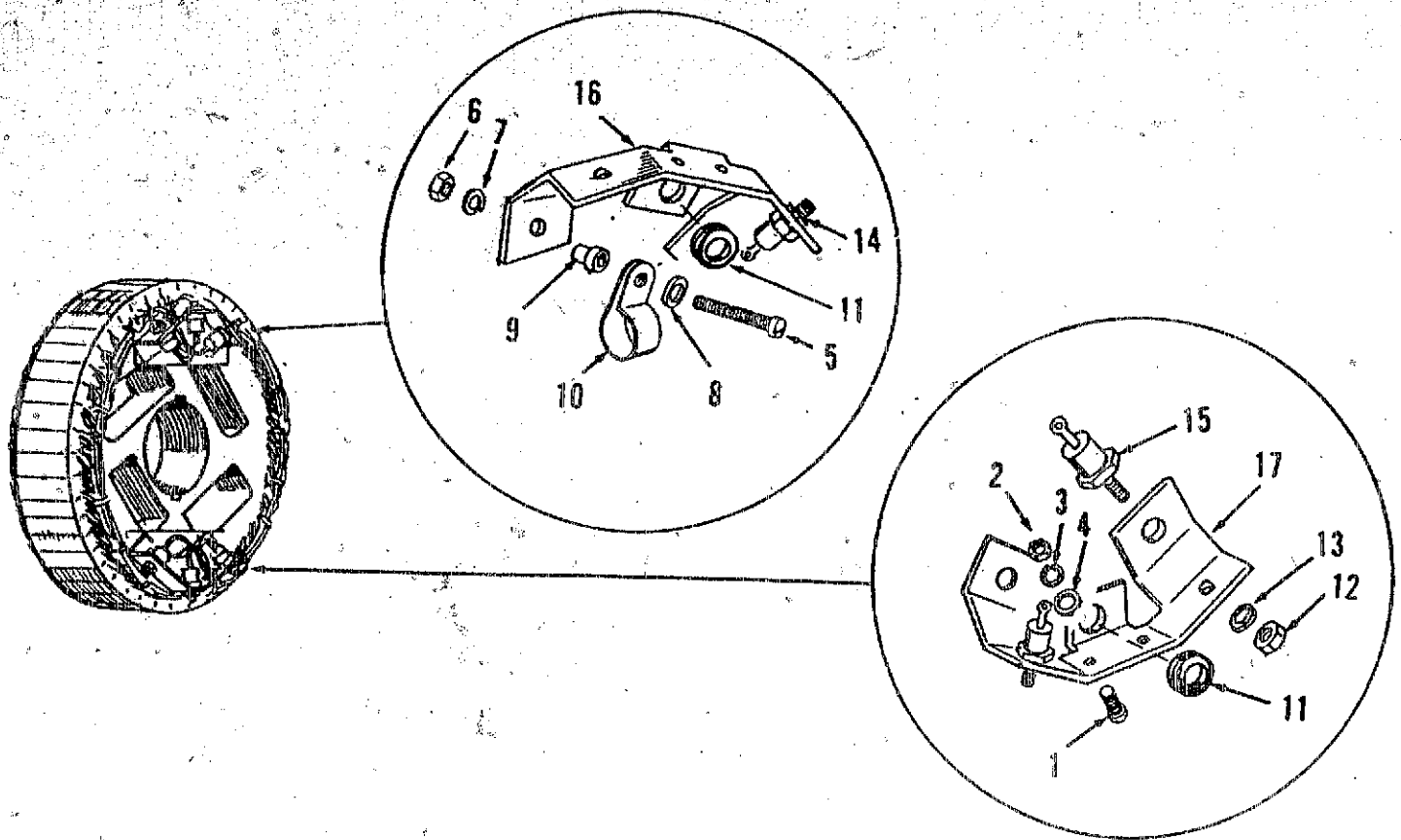


Generator

REF NO.	PART NO.	QTY USED	PART DESCRIPTION	REF NO.	PART NO.	QTY USED	PART DESCRIPTION
1	800-0003	2	Screw, Cap - Hex Head (1/4 - 20 x 1/2")	25	800-0048	1	Screw, Cap - Hex Head (3/8 - 16 x 3/4")
2	850-0040	2	Washer, Lock - Spring (1/4)	26	856-0010	1	Washer, Lock - EIT (3/8)
3	150-1456	1	Contact Assembly - Overspeed (Includes Parts Marked *)	27	150-0717	1	Switch, Overspeed
4	862-0001	2	*Nut, Hex (1/4 - 20)	28	805-0018	8	Screw, Cap - Hex Head (3/8 - 16 x 1")
5	853-0013	1	*Washer, Lock - ET (1/4)	29			Rotor Assembly, Generator DGEA
6	150-0723	1	*Contact, Electrical		201-3267	1	Standard
7	870-0250	1	*Nut, Insulated		201-3414-02	1	Extended Stack
8	150-1356	1	*Bracket, Mounting - Contact		201-3273	1	DGFA
9	750-1008	4	Nut, Hex (M10 x 1.5)	30	800-0513	1	Screw, Cap - Hex Head (Mod)
10	850-2010	4	Washer, Lock - Spring (M10)	31	850-0079	1	Washer, Lock (3/4)
11			Stud (M10)	32	526-0238	1	Washer, Flat (3/4)
	520-2420	4	13"	33	510-0101	1	Bearing, Ball
	520-2421	4	15"	34	232-2102	1	Spacer, Sleeve
12	503-1274	4	Hose, Rubber	35	201-1739		Rotor, Assembly - Exciter (See Separate Page for Components)
13	800-0009	4	Screw, Cap - Hex Head (1/4 - 20 x 1-1/2")	36	515-0145	1	Key, Machine
14	850-0040	4	Washer, Lock - Spring (1/4)	37	805-0035	8	Bolt, Hex Head - Special (5/8 - 11 x 1-1/2")
15	220-2353		Stator, Exciter	38	526-0259	8	Washer, Flat (5/8)
16	509-0125	1	Seal, Oil - "O" Ring	39	205-0089	1	Fan, Cooling - Generator
17	211-0185	1	End Bell, Generator	40	232-2078	1	Disk, Drive - Generator
18	114-0023	2	Screw, Cap - Hex Head (1/4 - 20 x 1-1/4")				
19	850-0040	2	Washer, Lock - Spring (1/4)				
20	862-0001	2	Nut, Hex (1/4 - 20)				
21	234-0368	1	Screen, Air				
22	718-1056	8	Screw, Cap - Hex Head (M10 x 1.5 x 35mm)				
23	850-2010	8	Washer, Lock - Spring (M10)				
24			Stator, Generator Voltage Code L DGEA				
	220-1461	1	Standard				
	220-1463	1	Extended Stack				
	220-1462	1	DGFA				
			Voltage Code Z				
	220-2004	1	DGEA				
	220-2005	1	DGFA				

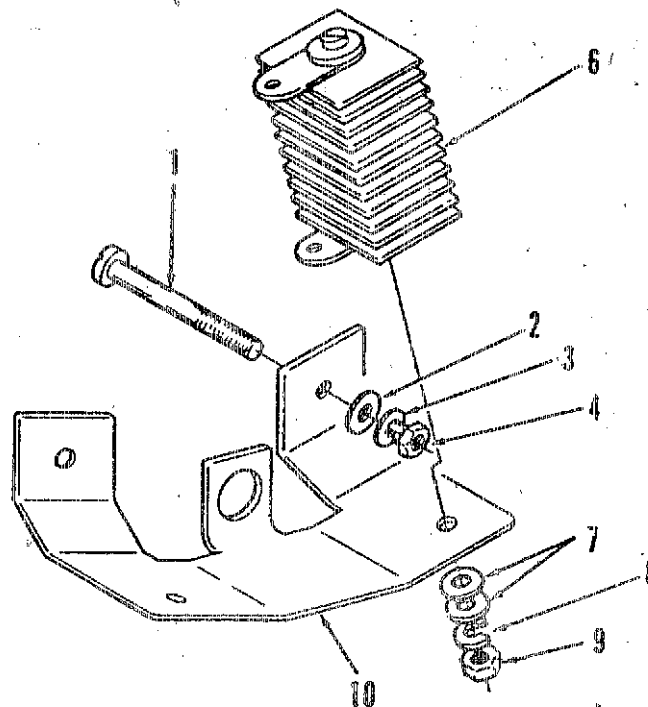
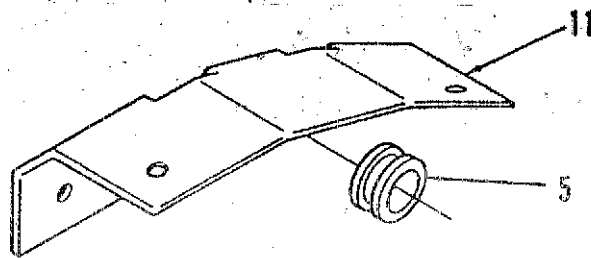
* Parts included in Overspeed Contact Assembly.
+ Parts included in Generator Rotor Assembly.

Exciter Rotor Components



REF NO.	PART NO.	QTY USED	PART DESCRIPTION	REF NO.	PART NO.	QTY USED	PART DESCRIPTION
	201-1739	1	Rotor Assembly, Exciter	9	508-0187	4	Spacer, Stepped
1	813-0100	2	Screw, Machine - Round Head (#10 - 32 x 1/2")	10	332-0050	2	Clamp, Loop
2	870-0053	2	Nut, Hex (#10 - 32)	11	508-0093	2	Grommet, Rubber
3	850-0030	2	Washer, Lock - Spring (#10)	12	870-0053	6	Nut, Hex (#10 - 32)
4	526-0008	2	Washer, Flat (#10)	13	850-0030	6	Washer, Lock - Spring (#10)
5	813-0110	4	Screw, Machine - Round Head (#10 - 32 x 2")	14	358-0097	3	Diode, Rectifier - Positive (CR1, CR2, CR3)
6	870-0053	4	Nut, Hex (#10 - 32)	15	358-0096	3	Diode, Rectifier - Negative (CR4, CR5, CR6)
7	850-0030	4	Washer, Lock - Spring (#10)	16	363-0054	1	Sink, Heat - Positive Diodes
8	526-0009	4	Washer, Flat (#10)	17	363-0055	1	Sink, Heat - Negative Diodes

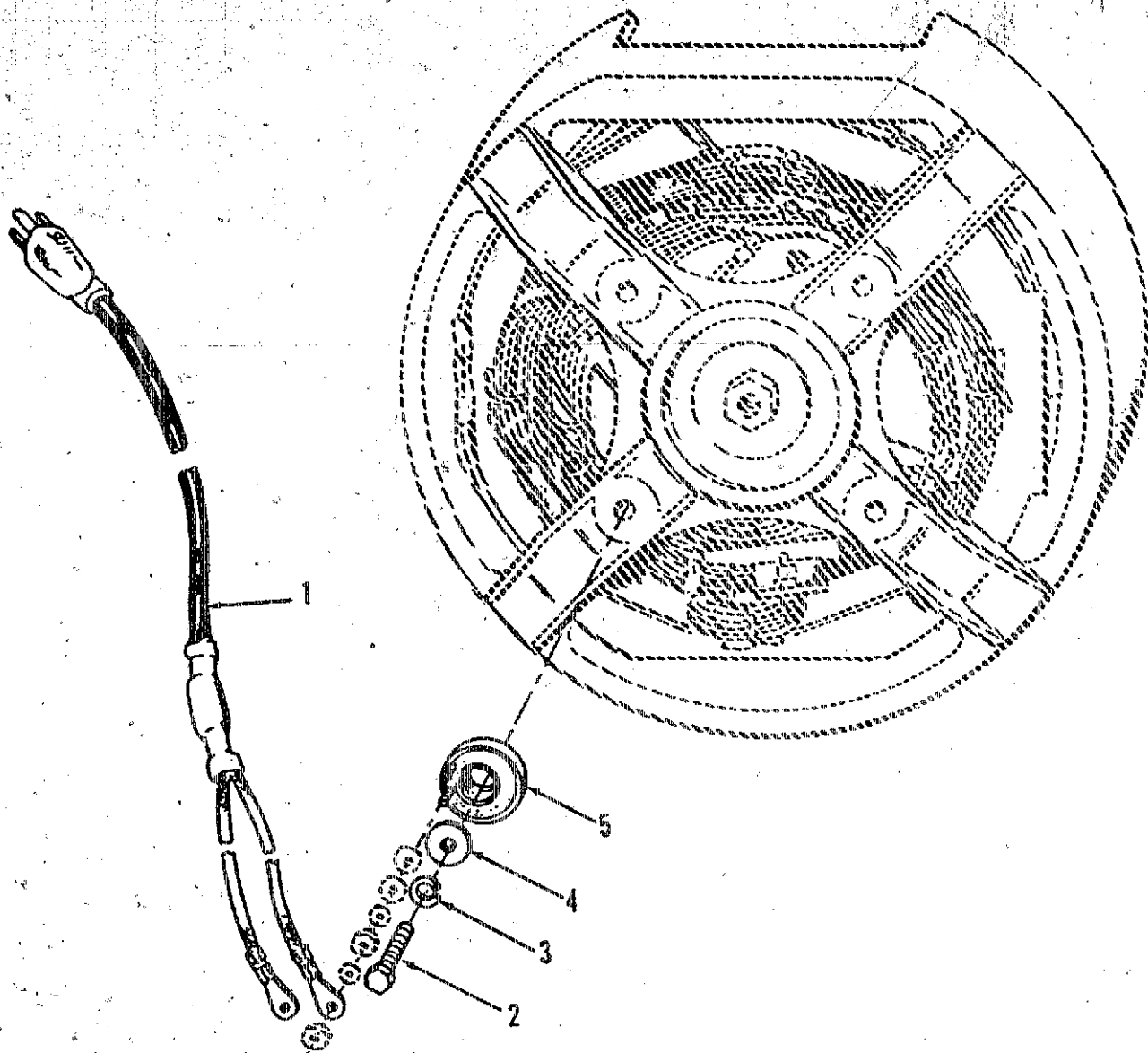
Voltage Suppressor Components



REF NO.	PART NO.	QTY USED	PART DESCRIPTION
	232-2445	1	Suppressor, Voltage
1	813-0112	4	Screw, Machine - Round Head (#10 - 32 x 2-1/2")
2	526-0140	4	Washer, Flat (#10)
3	850-0030	4	Washer, Lock - Spring (#10)
4	870-0053	4	Nut, Hex (#10)
5	508-0093	2	Grommet, Rubber

REF NO.	PART NO.	QTY USED	PART DESCRIPTION
6	305-0526	1	Suppressor Set, Voltage
7	526-0140	4	Washer, Flat (#10)
8	850-0030	4	Washer, Lock - Spring (#10)
9	870-0053	4	Nut, Hex (#10 - 32)
10	363-0054	1	Sink, Heat - Positive
11	363-0055	1	Sink, Heat - Negative

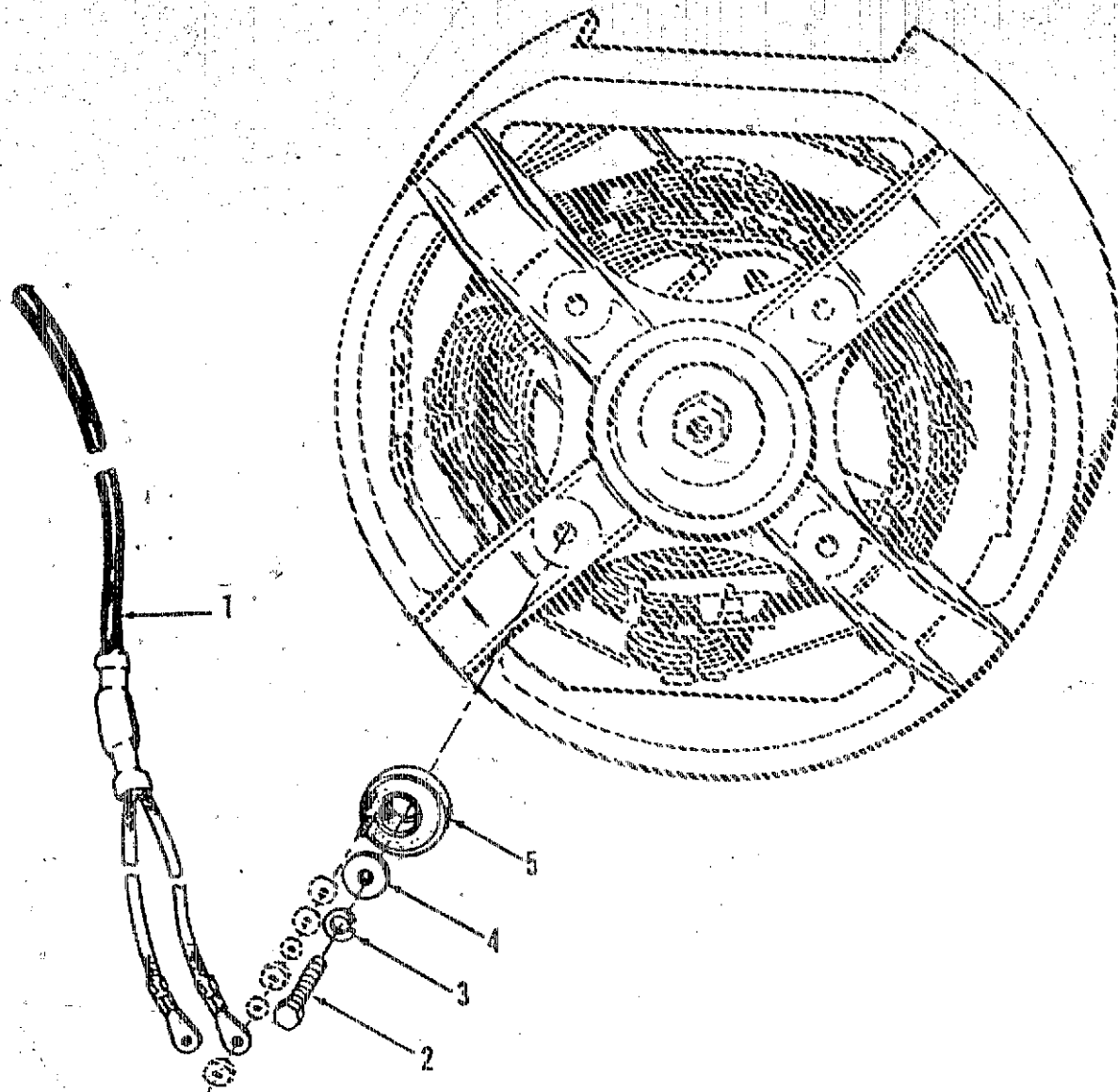
Generator Heater (120 Volt)



REF NO.	PART NO.	QTY USED	PART DESCRIPTION
1	335-0146	1	Cable Assembly, Electric - 120V (Includes Thermostat)
2	800-0004	1	Screw, Cap - Hex Head (1/4 - 20 x 5/8")

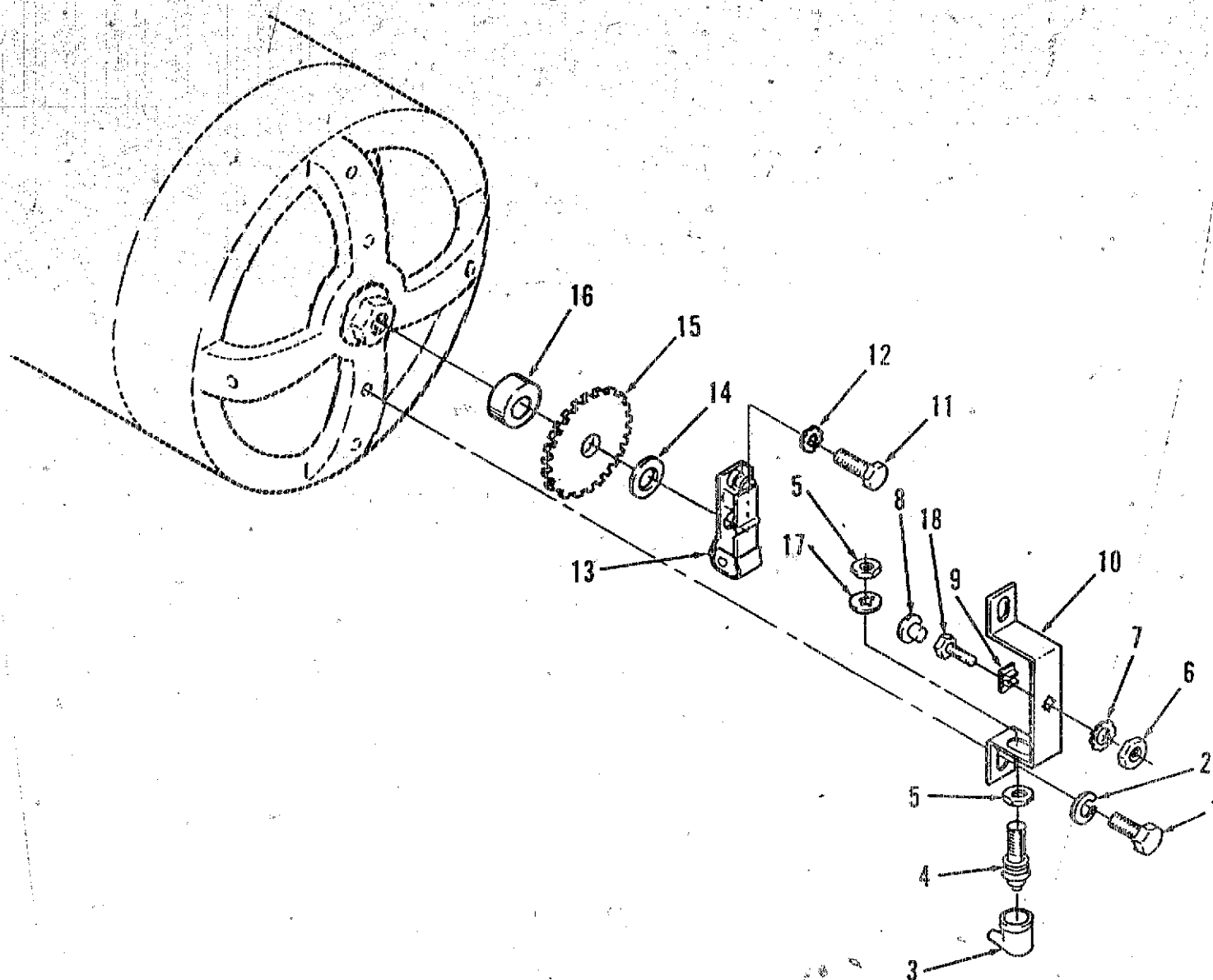
REF NO.	PART NO.	QTY USED	PART DESCRIPTION
3	850-0038	1	Washer, Lock - Spring (1/4)
4	526-0158	1	Washer, Flat (1/4)
5	333-0059	1	Heater, Electrical - 120 VAC 125 Watt

Generator Heater (240 Volt)



REF NO.	PART NO.	QTY USED	PART DESCRIPTION	REF NO.	PART NO.	QTY USED	PART DESCRIPTION
1			Cable Assembly	2	800-0004	1	Screw, Cap - Hex Head (1/4 - 20 x 5/8")
	226-0090	1	Lead	3	850-0038*	1	Washer, Lock (1/4)
	226-3615	1	Lead Assembly (Includes Diode Rectifier)	4	526-0158	1	Washer, Flat (1/4)
	357-0013	1	Rectifier, Diode	5	333-0379	1	Heater, Ring - 240-V, 300 W
	898-0020	1	Sleeving, Insulation (15")				
	508-0114	2	Grommet				
	309-0258	1	Thermostat				
	898-0863	1	Sleeving, Insulation (4")				
	332-1506	1	Connector, Parallel				
	334-0759	1	Wire, CCXL - 14 Ga				
	332-1445	5	Tie, Cable				

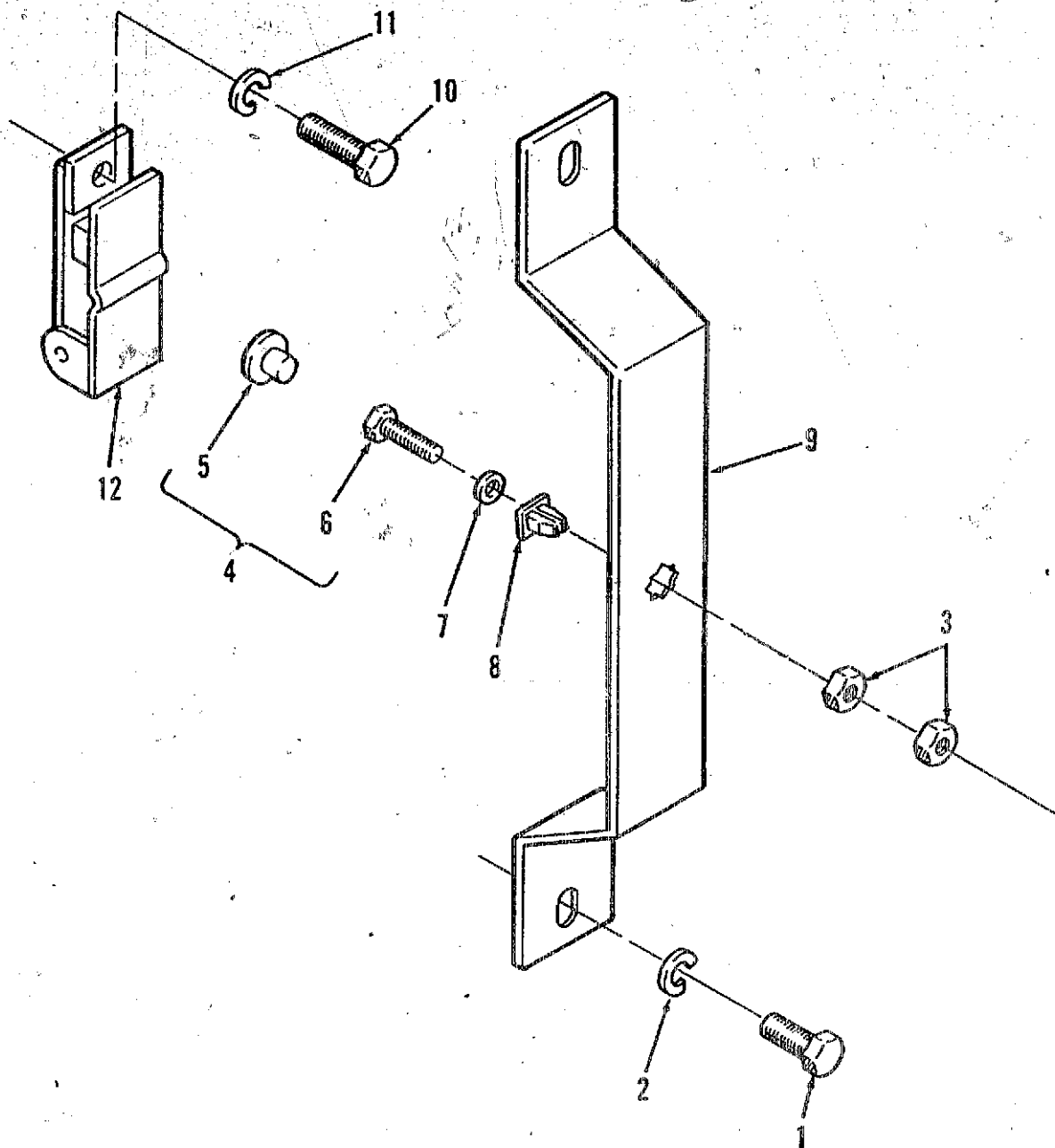
Magnetic Pickup.



REF NO.	PART NO.	QTY USED	PART DESCRIPTION
1	800-0003	2	Screw, Cap - Hex Head (1/4 - 20 x 1/3")
2	850-0040	2	Washer, Lock - Spring (1/4)
3	150-1410	1	Cap, Insulator
4	150-1406	1	Sensor, Speed - Magnetic
5	868-0011	2	Nut, Hex - Jam (3/4 - 16)
6	862-0001	2	Nut, Hex (1/4 - 20)
7	853-0013	1	Washer, Lock - W/ET (1/4)
8	150-0723	1	Contact, Electrical
9	870-0250	1	Nut, Insulator

REF NO.	PART NO.	QTY USED	PART DESCRIPTION
10	301-9402	1	Bracket, Mounting
11	800-0053	1	Screw, Cap - Hex Head (3/8 - 16 x 1-3/4")
12	856-0010	1	Washer, Lock - W/EIT (3/8)
13	150-0717	1	Switch, Overspeed
14	526-0077	1	Washer, Flat (3/8)
15	150-1557	1	Wheel, Sensor - Speed
16	370-4011	1	Spacer, Sleeve
17	854-0031	1	Washer, Lock - W/IT (3/4)

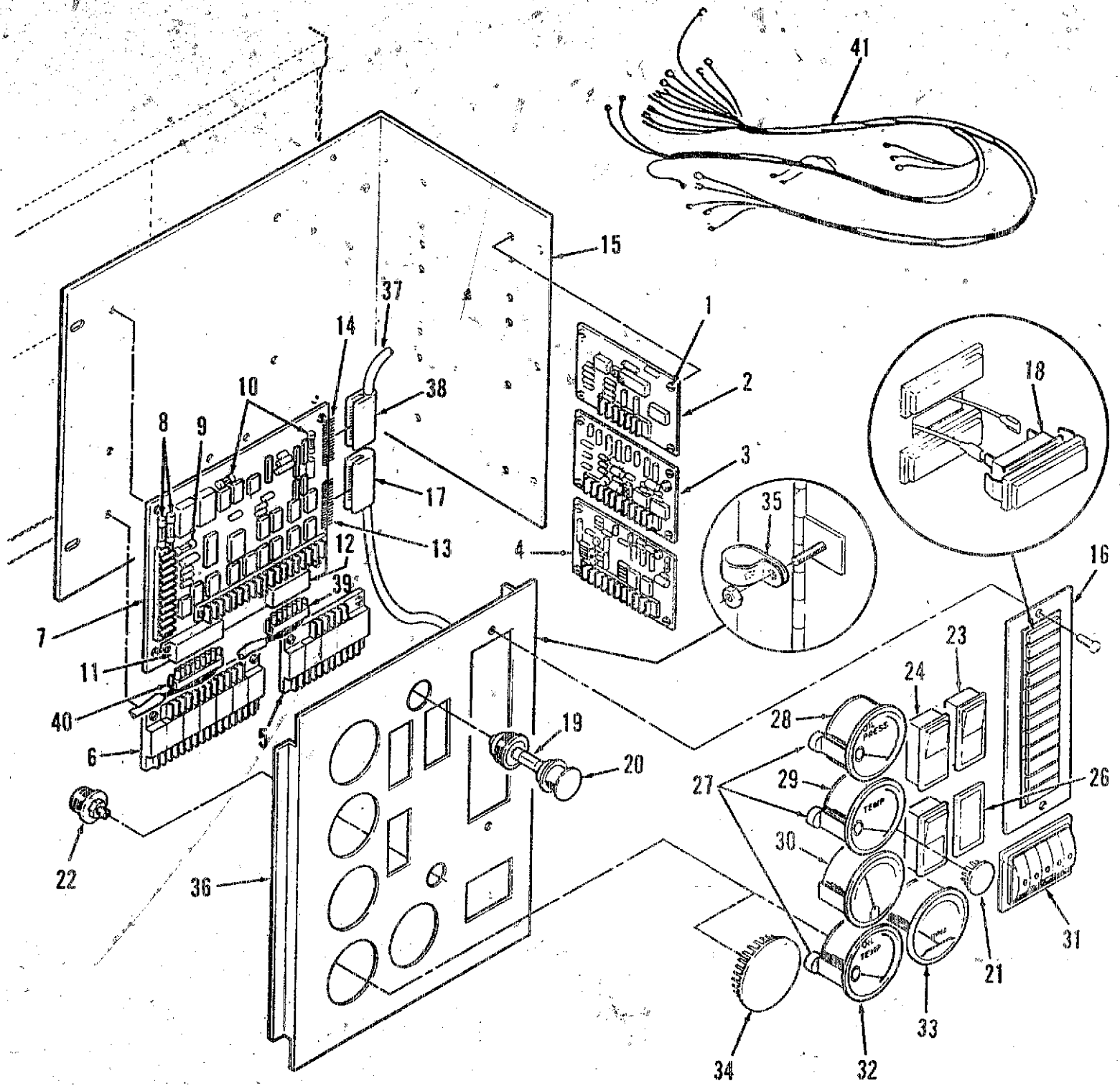
Overspeed Switch Assembly



REF NO.	PART NO.	QTY USED	PART DESCRIPTION
1	800-0003	2	Screw, Cap - Hex Head (1/4 - 20 x 1/2")
2	850-0040	2	Washer, Lock - Spring (1/4)
3	862-0001	2	Nut, Hex (1/4 - 20)
4	150-0723	1	Point Assembly, Overspeed (Includes Contact And Screw)
5	306-0036	1	Contact, Electrical
6	150-0724	1	Screw, Cap - Hex Head (Mod)

REF NO.	PART NO.	QTY USED	PART DESCRIPTION
7	853-0013	1	Washer, Lock - W/ET (1/4)
8	870-0250	1	Nut, Insulating (1/4)
9	150-1356	1	Bracket, Mounting
10	800-0048	1	Screw, Cap - Hex Head (3/8 - 16 x 3/4")
11	856-0010	1	Washer, Lock - W/EIT (3/8)
12	150-0717	1	Switch, Overspeed

Engine Control

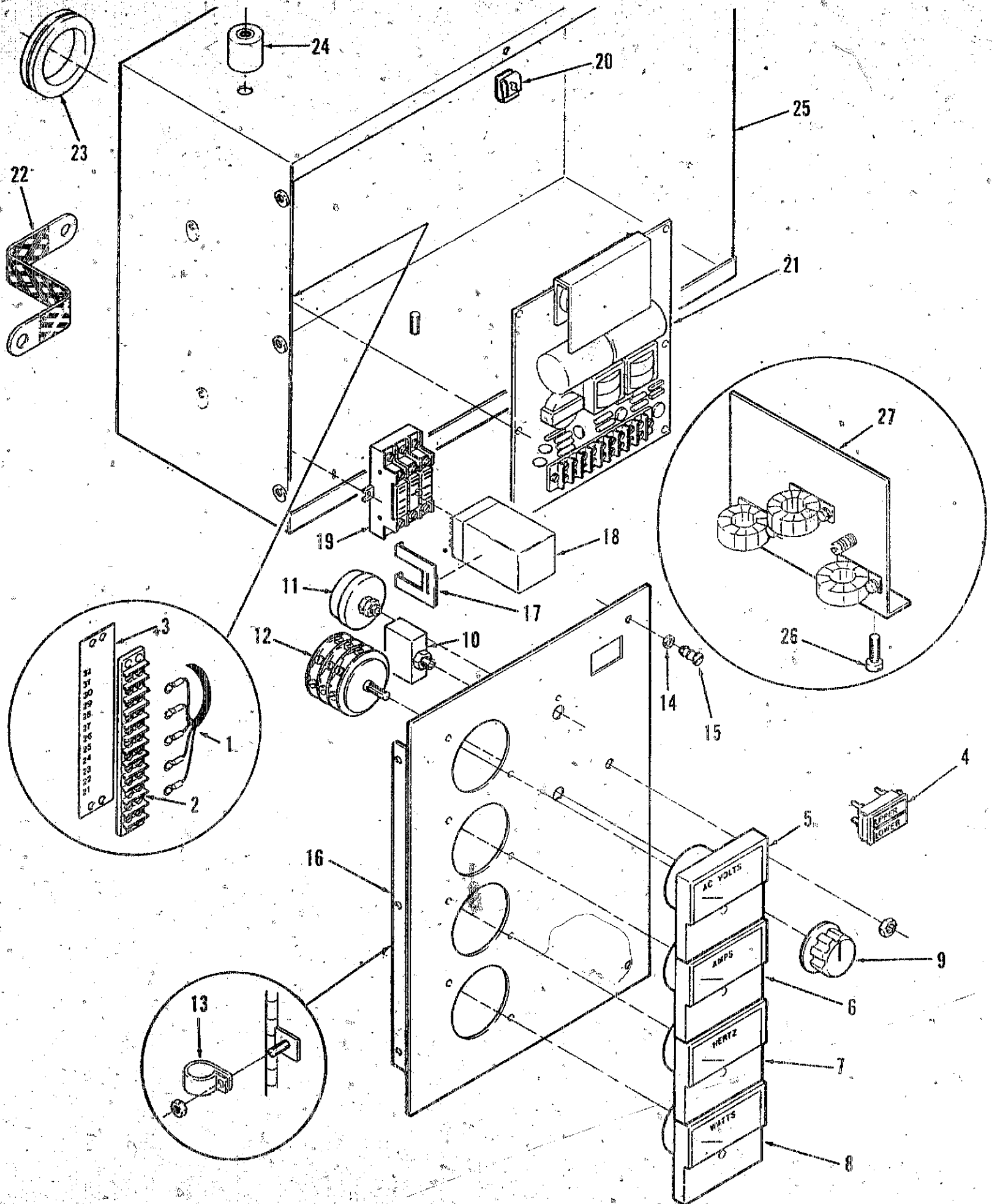


Engine Control

REF NO.	PART NO.	QTY USED	PART DESCRIPTION	REF NO.	PART NO.	QTY USED	PART DESCRIPTION
1	815-0544	24	Screw, Machine - Round Head IT Washer (#6 - 32 x 1/2")	17	323-1310	1	Housing, Conn - 13 pin (J3)
2	300-2899	1	Board, Printed Circuit - Time Delay, Start/Stop (A15)	18	323-1302	13	Contact, Pin
3			Board, Printed Circuit - Magnetic Pickup (A16)	19	322-0369-02	1	Lamp, Incandescent - 1/3 Watt - 28 Volts DC
	300-2903	1	Standard (Fixed Sensitivity)	20	322-0017	1	Lamp, Incandescent - 28 Volts DC (DS11)
	300-2904	1	Precision (Adj Sensitivity)	21	322-0361	1	Holder, Lamp
4	300-2906	1	Board, Printed Circuit - Over/Under Volt Sensor (A17)	22	517-0131	1	Plug, Button
5	300-2856	1	Board, Printed Circuit - Relay Assembly - (A13)	23	151-0402	1	Potentiometer - Speed Control (R11)
6	300-2863	1	Board, Printed Circuit - Relay Assembly - (A14)	24	308-0785	1	Switch, Push - Reset/Panel Lamp (S11)
7			Board, Printed Circuit - Engine Monitor - (A11) (Includes Fuses & Connectors)	26	308-0784	1	Switch, Push - Run/Stop/ Remote (S12)
	300-2808	1	2 Light Control	27	301-6257	1	Cover, Hole - Switch
	300-2810	1	7 Light Control	28	193-0250	3	Resistor, Gauge (R12)
	300-2812	1	12 Light Control	29	193-0352	1	Gauge, Pressure - Oil (M11)
8	321-0270	2	Fuse, Cartridge - 20 Amp (F1, F2)	30	193-0351	1	Gauge, Temp - Water (M12)
9	321-0231	1	Fuse, Cartridge - 15 Amp (F3)	31	302-1642	1	Meter, Volt (M13)
10	321-0094	2	Fuse, Cartridge - 5 Amp (F4, F5)	32	302-0885	1	Meter, Running Time (M14)
11	323-1305	1	Connector - 8 Pin (P1)	33	193-0330	1	Gauge, Temp - Oil (M15)
12	323-1303	1	Connector - 6 Pin (P2)	34	302-1715	1	Meter, Tach (M16)
13	323-1309	1	Connector - 13 Pin (P3)	35	517-0221	1	Plug, Button
14	323-1307	1	Connector - 12 Pin (P4)	36	332-0052	1	Clamp, Loop
15	301-8851	1	Bracket, Mounting - Printed Circuit Board		870-0131	2	Nut, Self-Locking - ET Hex. Washer Head (#10 - 32)
	821-0004	4	Screw, Self-Locking - Hex Washer Head (#10 - 32 x 5/16")	37	301-9055-01	1	Door, Control
16			Module, Indicator - Fault (A12) (Includes Connector Housing)		301-9055-02	1	5 Gauge Holes
	322-0358-02	1	2 Light Control	38	338-2277	1	3 Gauge Holes
	322-0359-02	1	7 Light Control	39	323-1308	1	Harness Assembly, Wiring - DC (Includes Connector Housing)
	322-0360-02	1	12 Light Control	40	323-1302	12	Housing, Conn - 12 Pin (J4)
	815-0385	4	Screw, Machine - Round Head (#6 - 32 x 1/2")	41	323-1304	1	Contact, Pin
	870-0183	4	Nut, Self-Locking - ET Hex Washer Head (#6 - 32)		323-1200	6	*Housing, Conn - 6 Pin (J2)
					323-1306	1	* Contact, Pin
					323-1200	8	*Housing, Conn - 8 Pin (J1)
					338-2282	1	* Contact, Pin
							Harness, Wiring - Control To Engine (Includes Parts Marked *)
				42	517-0137	1	Plug, Hole
				43	98-5219	1	Decal, Door - Outside
				44	98-5220	1	Decal, Door - Inside

* Parts included in Control To Engine Wiring Harness Assembly.

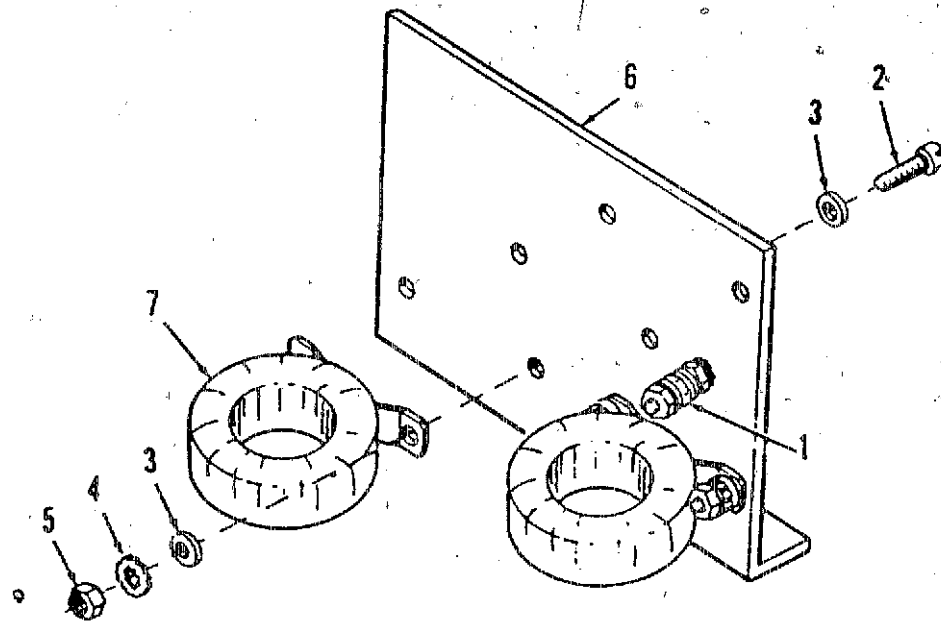
Generator Control



Generator Control

REF NO.	PART NO.	QTY USED	PART DESCRIPTION	REF NO.	PART NO.	QTY USED	PART DESCRIPTION
1	338-2278	1	Harness, Wiring - AC (Includes Terminal Block) (Only in Controls With Meters)	16	301-9054-01	1	Door, Control
	812-0065	2	Screw, Machine - Round Head (#6 - 32 x 5/8")		301-9054-02	1	4 Meter Holes
2	332-0607	1	Block, Terminal (TB1)		301-9054-03	1	3 Meter Holes
3	332-2723	1	Strip, Marker		821-0004	3	No Meter Holes
4	322-0363	1	Light, Indicator - Dual (DS21, DS22)	17	307-1987	2	Screw, Self-Locking-Hex Washer Head (#10 - 32 x 5/16")
5	302-1148	1	Meter, Volt - AC (M21)	18	307-1056	1	Clip, Retaining - Relay
6	302-1724	1	Meter, Ampere (M22)	19	323-0804	1	Relay, 24 VDC
	302-1725	1	0-250/500		815-0544	2	Socket, Relay
	302-1726	1	0-375/750	20	406-0332	2	Screw, Machine - IT Round Washer Hd (#6 - 32 x 1/2")
	302-1727	1	0-400/800				Receptacle, Turnbutton Fastener
7	302-1720	1	0-500/1000	21	300-2880	1	Regulator, Voltage (VR21)
8		1	Meter, Frequency (M23)		815-0544	6	Screw, Machine - IT Round Washer Hd (#6 - 32 x 1/2")
		1	Meter, Watt (M24) (See Separate Page For Components)	22	337-0049	1	Strap, Electrical (Ground)
9	303-0032	1	Knob		800-0024	1	Screw, Cap - Hex Head (5/16 - 18 x 1/2")
10	320-1121	1	Breaker, Circuit (CB21) Without Auxiliary Contacts		856-0008	1	Washer, Lock - EIT (5/16)
	320-1438	1	With Auxiliary Contacts	23	508-0051	1	Grommet
11	303-0261	1	Rheostat (R21)	24	402-0527	4	Mount, Vibration
12	308-0882	1	Switch, Rotary (S21)		800-0045	4	Screw, Cap - Hex Head (5/16 - 18 x 3/8")
13	332-0052	1	Clamp, Loop		850-0045	4	Washer, Lock - Spring (5/16)
	870-0131	1	Nut, Self-Locking - ET Hex Washer Head (#10 - 32)	25	301-8065	1	Box, Control
14	406-0334	2	Clip, Retaining - Turnbutton Fastener	26	821-0010	2	Screw, Self-Locking - Hex Washer Hd (1/4 - 20 x 1/2")
15	406-0333	2	Stud, Fastener - Turnbutton	27		1	Transformer Assembly - Current (See Separate Page For Components)

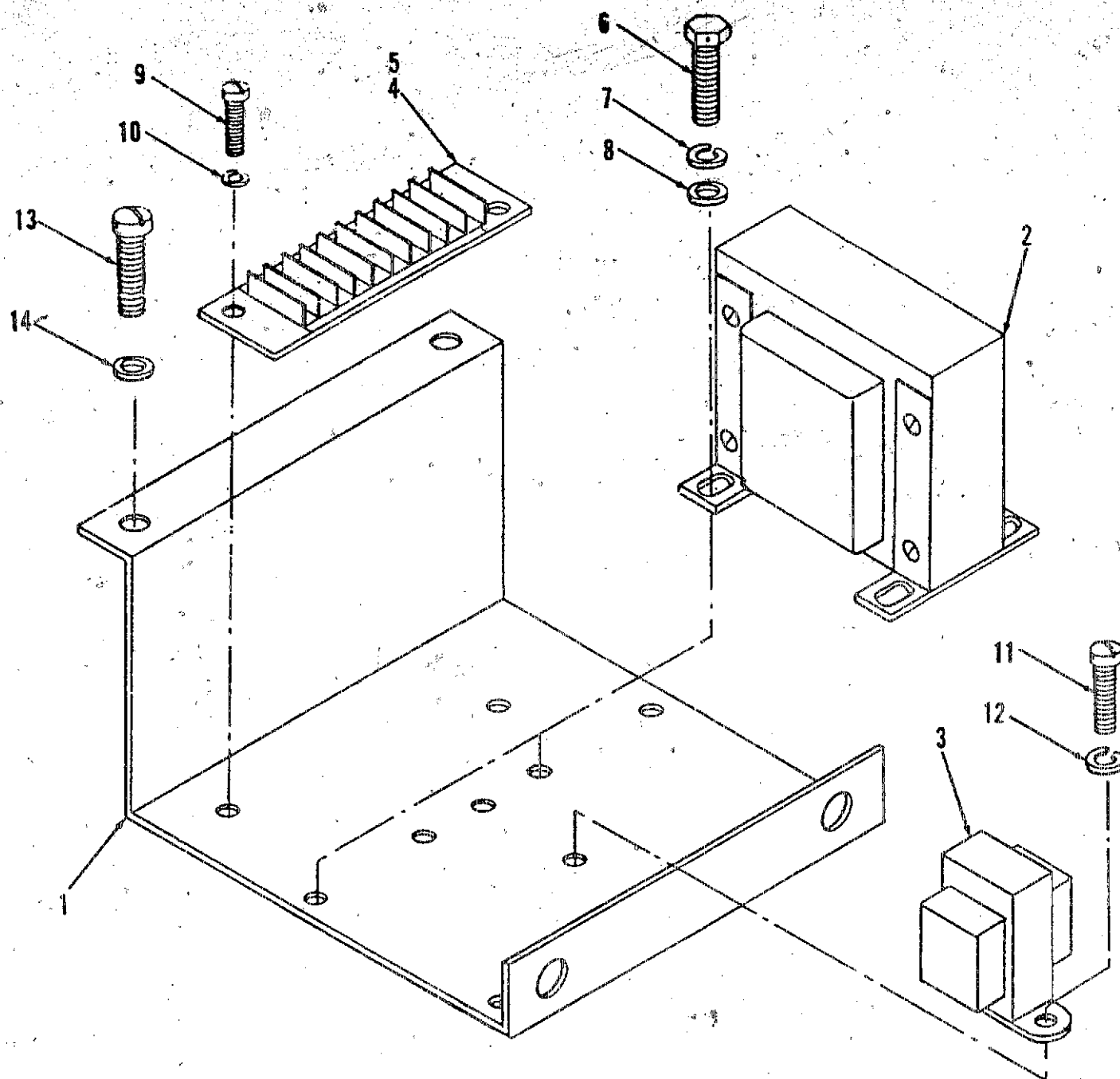
Current Transformer



REF NO.	PART NO.	QTY USED	PART DESCRIPTION
1			Terminal Assembly, Ground
	815-0203	1	Screw, Machine - Round Head Bottom (#10 - 32 x 7/8")
	871-0010	3	Nut, Hex (#10 - 32)
	856-0003	1	Washer, Lock - EIT (#10)
	854-0010	2	Washer, Lock - W/IT (#10)
	526-0049	2	Washer, Flat - Brass (#10)
2	821-0005	6	Screw, Machine - Round Head (#10 - 32 x 1/2")

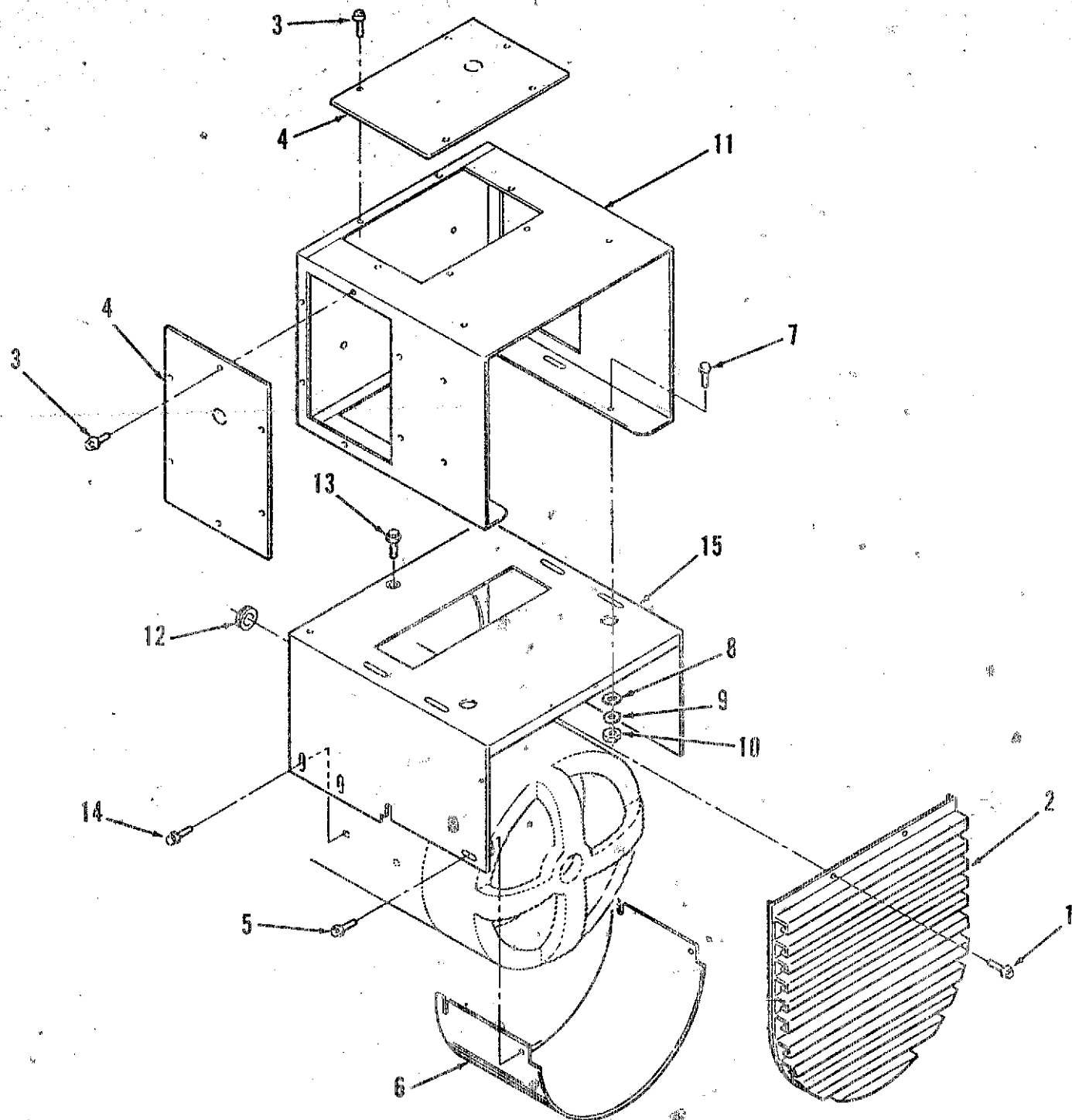
REF NO.	PART NO.	QTY USED	PART DESCRIPTION
3	526-0008	12	Washer, Flat
4	856-0003	6	Washer, Lock - EIT (#10)
5	870-0053	6	Nut, Hex
6	302-0764	1	Bracket, Mounting Transformer, Current
7	302-1868-05	3	DGEA (250/5 & 500/5)
	302-1868-06	3	DGFA (300/5 & 600/5)

Current Transformer (Voltage Code E)



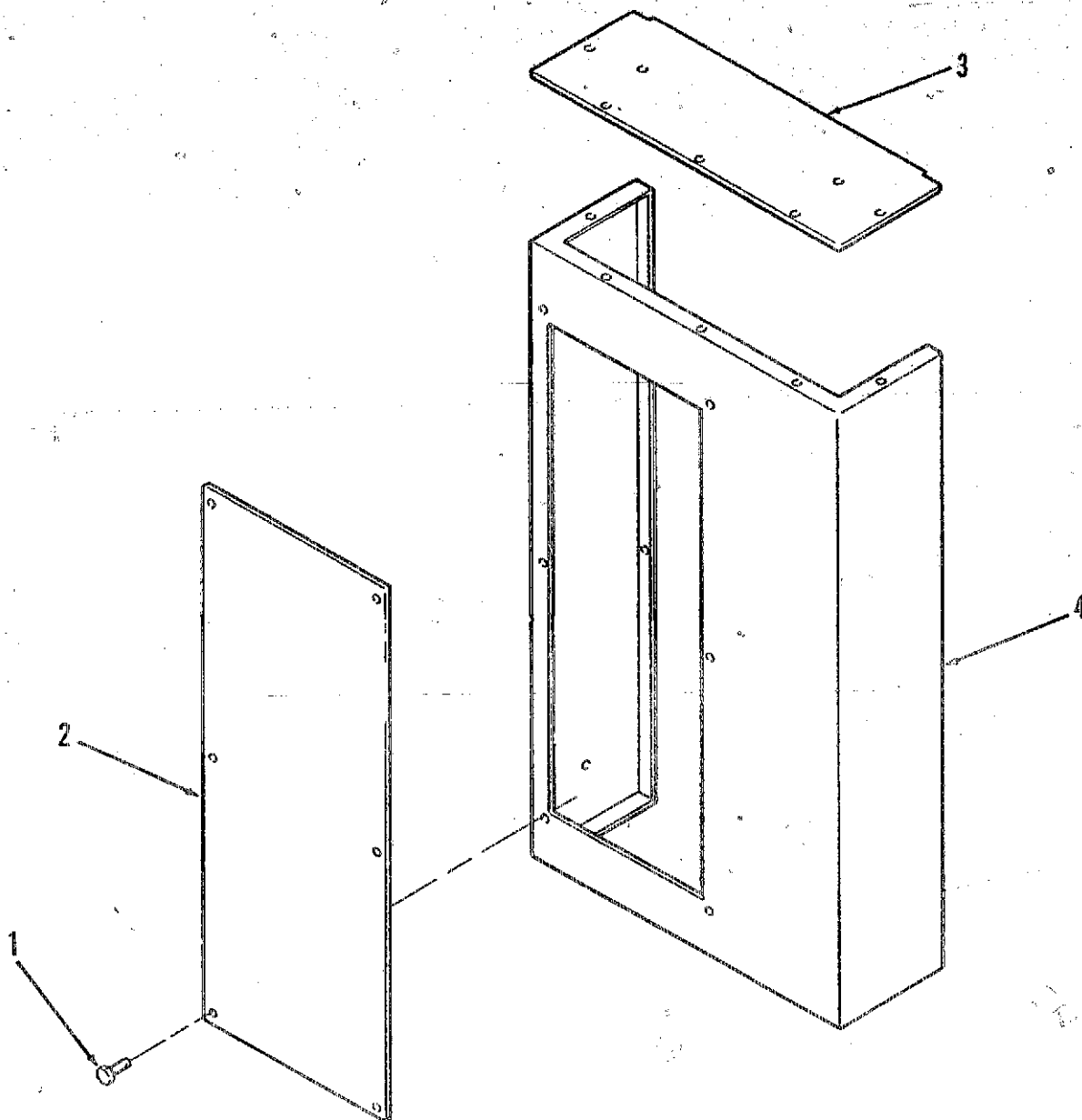
REF NO.	PART NO.	QTY USED	PART DESCRIPTION	REF NO.	PART NO.	QTY USED	PART DESCRIPTION
1	301-9540	1	Bracket, Mounting - Transformer	9	812-0077	2	Screw, Machine - Round Head (#8 - 32 x 3/8")
2	315-0636	2	Transformer, Current	10	850-0025	2	Washer, Lock (#8)
3	315-0635	1	Transformer, Current	11	812-0079	2	Screw, Machine - Round Head (#8 - 32 x 1/2")
4	332-2562	1	Block, Terminal	12	850-0025	2	Washer, Lock (#8)
5	332-2563	1	Strip, Marker	13	812-0156	4	Screw, Machine - Round Head (1/4 - 20 x 1-1/2")
6	800-0007	8	Screw, Cap - Hex Head (1/4 - 20 x 1")	14	850-0040	4	Washer, Lock (1/4)
7	850-0040	8	Washer, Lock (1/4)				
8	526-0018	8	Washer, Flat (1/4)				

Control Housing



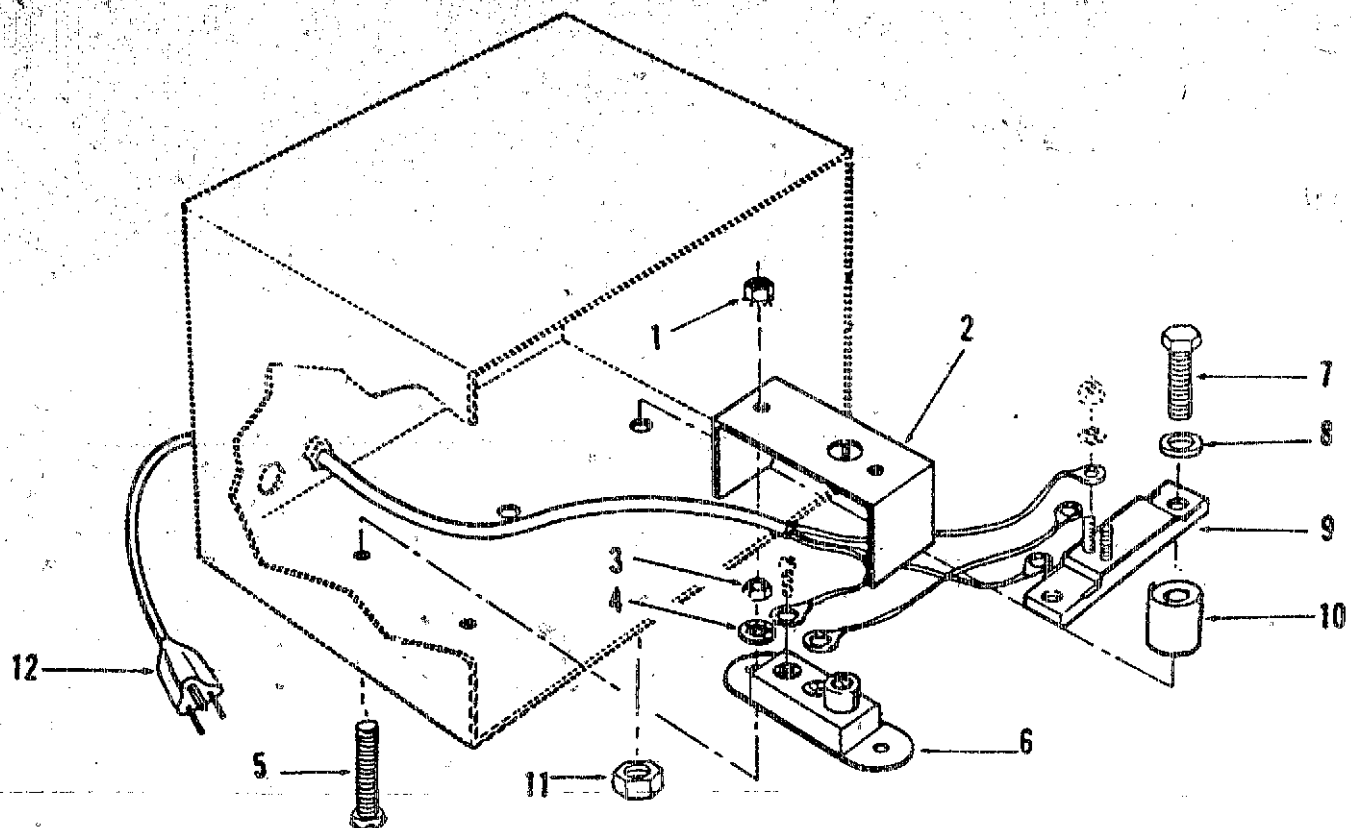
REF. NO.	PART NO.	QTY USED	PART DESCRIPTION	REF. NO.	PART NO.	QTY USED	PART DESCRIPTION
1	812-0146	8	Screw, Self-Locking - Hex Washer Head (1/4 - 20 x 3/8")	10*	870-0212	6	Nut, Hex (1/4 - 20)
2	234-0370	1	Grille, Inlet - Air	11	301-3155	1	Housing, Box, Control
3	815-0350	18	Screw, Tap - Hex Washer Head (#10 - 32 x 3/8")	12	508-0203	1	Grommet
4	301-3156	3	Panel, Access		508-0051	1	Used Thru October 1984 (1" ID)
5	821-0010	6	Screw, Self-Locking - Hex Washer Head (1/4 - 20 x 1/2")			1	Used Beginning November 1984 (1-3/4" ID)
6	234-0361	1	Wrapper, Bell - End	13	821-0010	1	Screw, Self-Locking - Hex Washer Head (1/4 - 20 x 1/2")
7	821-0018	6	Screw, Self-Locking - Hex Washer Head (1/4 - 20 x 5/8")	14	821-0014	8	Screw, Self-Locking - Hex Washer Head (5/16 - 18 x 1/2")
8	856-0006	1	Washer, Lock - W/EIT (1/4)	15	301-3154	1	Saddle, Box - Control
9	526-0018	5	Washer, Flat (1/4)	16	850-0040	4	Washer, Lock (1/4)

Entrance Box



REF NO.	PART NO.	QTY USED	PART DESCRIPTION	REF NO.	PART NO.	QTY USED	PART DESCRIPTION
1	821-0010	16	Screw, Lock (1/4 - 20 x 1/2")	3	301-9669	2	Panel, Breaker - Circuit
2	301-9975	1	Cover, Breaker - Circuit	4	301-9668	1	Box, Breaker - Circuit

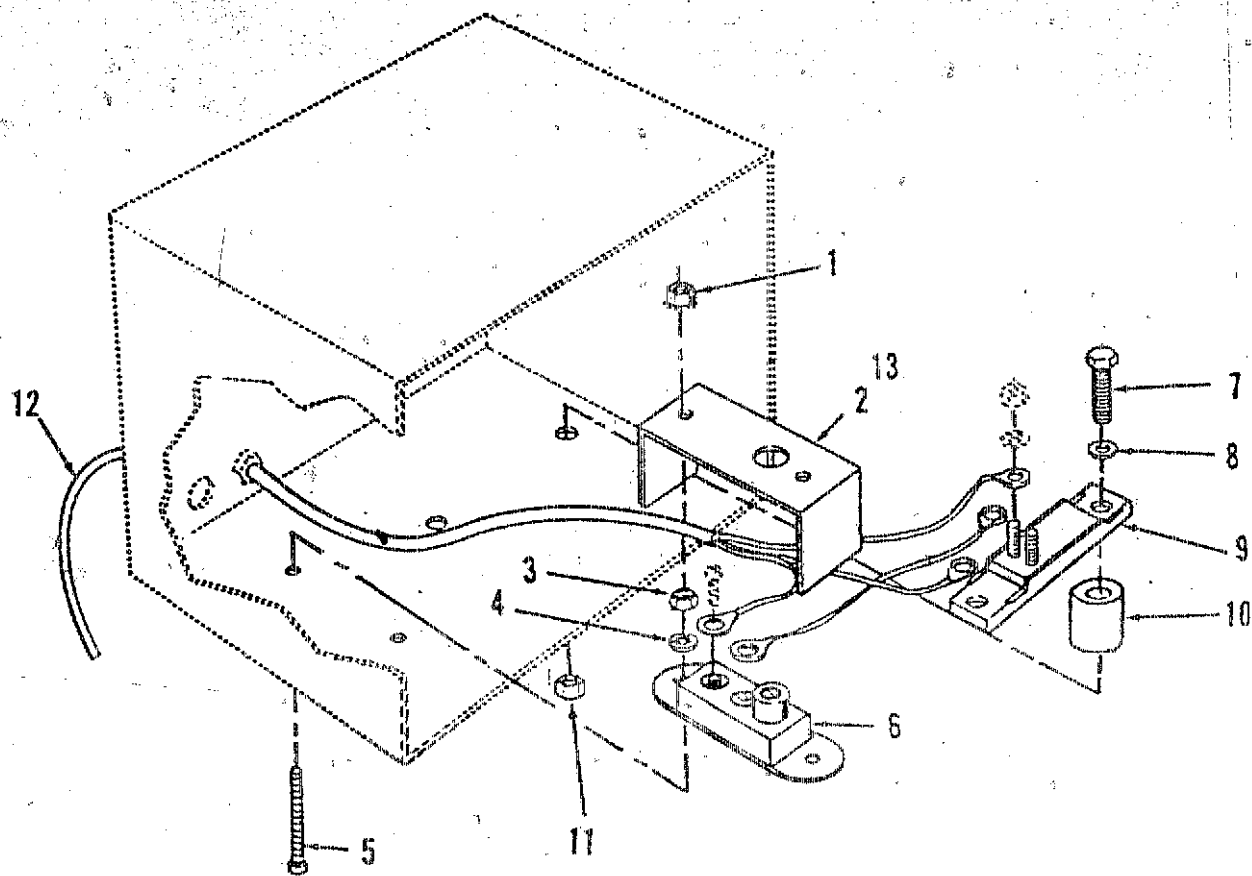
Control Heater (120 Volt)



REF NO.	PART NO.	QTY USED	PART DESCRIPTION
1	870-0183	2	Nut, Self-Locking - Hex ET (#6 - 32)
2	301-1886	1	Cover, Thermostat
3	860-0006	2	Nut, Hex (#6 - 32)
4	854-0006	2	Washer, Lock - IT (#6)
5	812-0070	2	Screw, Machine - Round Head (#6 - 32 x 1-1/4)
6	309-0128	1	Thermostat, Adjustable

REF NO.	PART NO.	QTY USED	PART DESCRIPTION
7	800-0034	2	Screw, Cap. - Hex Head (5/16 - 18 x 2-1/4")
8	526-0113	2	Washer, Flat (11/32" ID x 1" OD x 3/32" THK)
9	333-0151	1	Heater, 240 Volt - 300 Watt
10	130-1107	2	Spacer, Sleeve
11	870-0257	2	Nut, Self-Locking (5/16 - 18)
12	335-0161	1	Cable, Electrical

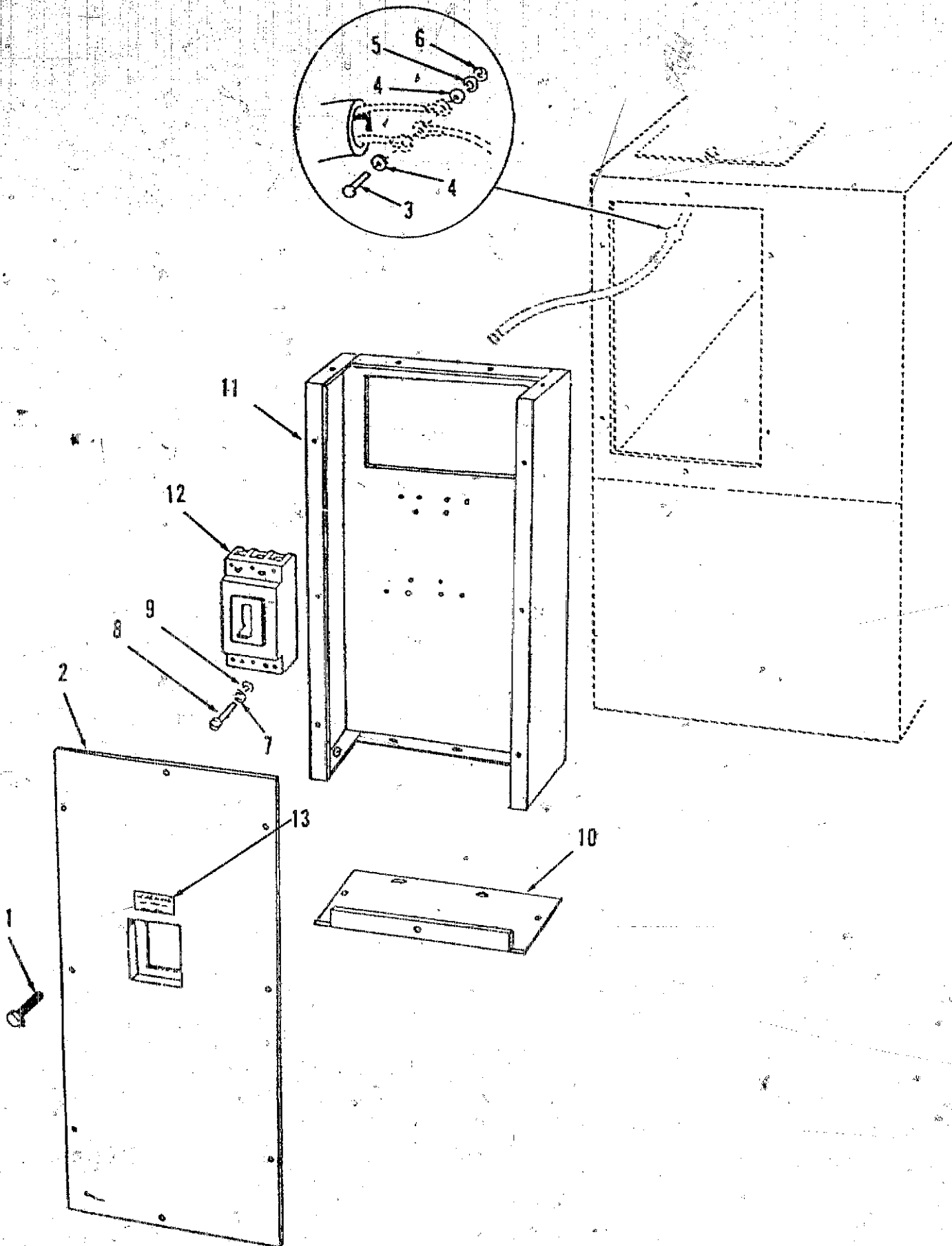
Control Heater (240 Volt)



SC1156

REF NO.	PART NO.	QTY USED	PART DESCRIPTION	REF NO.	PART NO.	QTY USED	PART DESCRIPTION
1	870-0183	2	Nut, Lock - W/ET (#6 - 32)	8	526-0113	2	Washer, Flat (5/16)
2	301-1886	1	Cover, Thermostat	9	333-0378	1	Heater, 240 Volt - 150 Watt
3	860-0006	2	Nut, Hex (#6 - 32)	10	130-1107	2	Spacer
4	854-0006	4	Washer, Lock - W/IT (#6)	11	870-0257	2	Nut, Self-Locking - Hex Head (5/16 - 18)
5	812-0070	2	Screw, Machine - Round Head (#6 - 32 x 1 1/4")	12	338-2181	1	Harness Assembly, Heater (Includes Rectifier Diode)
6	309-0128	1	Thermostat, Adjustable	13	98-3232	1	Decal, Warning
7	800-0034	2	Screw, Cap - Hex Head (5/16 - 18 x 2 1/4")				

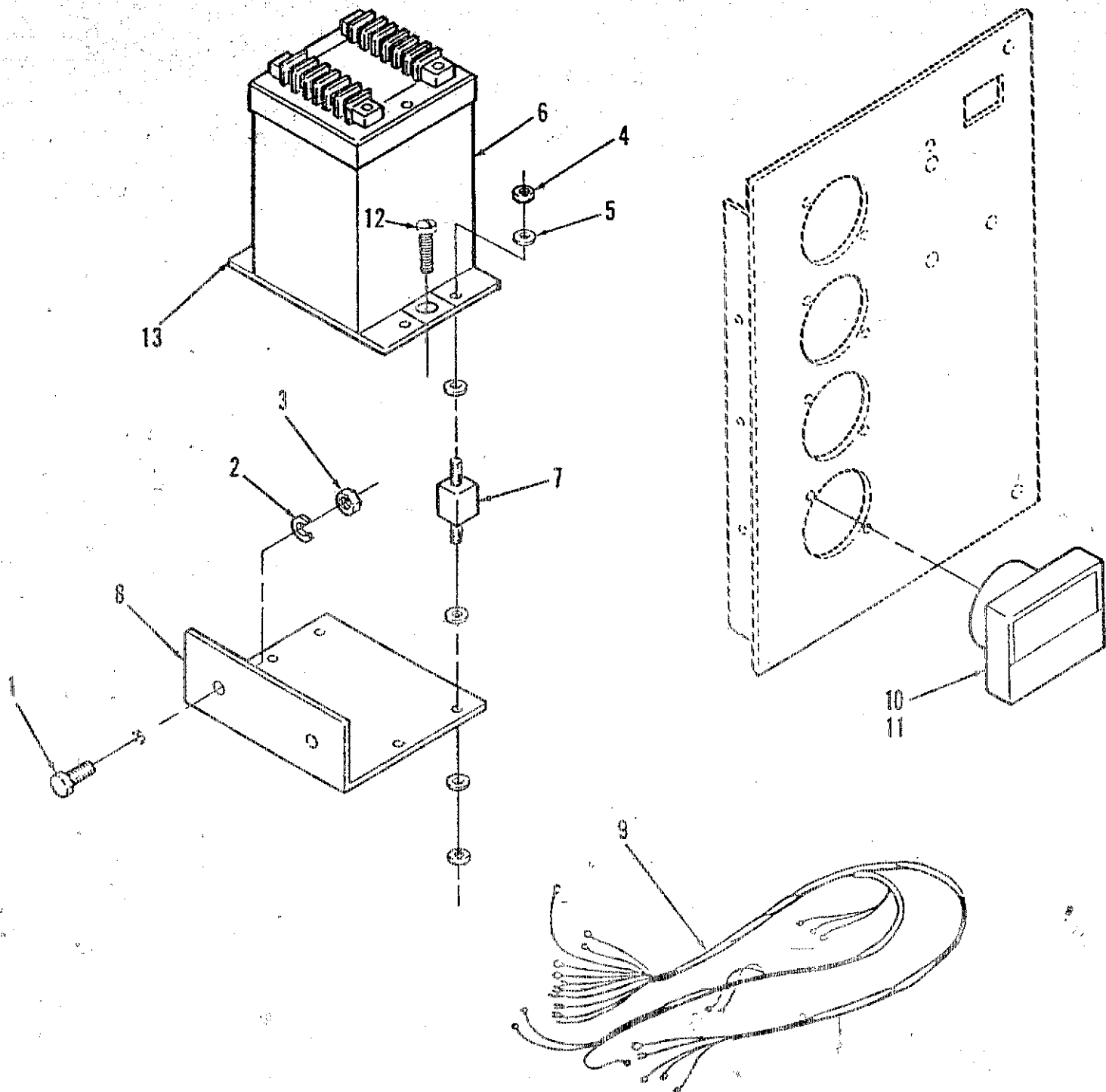
Circuit Breaker



Circuit Breaker

REF NO.	PART NO.	QTY USED	PART DESCRIPTION	REF NO.	PART NO.	QTY USED	PART DESCRIPTION
1	821-0010	21	Screw, Lock (1/4 - 20 x 1/2")				480 Volt
2	301-9892	1	Cover, Breaker - Circuit	320-1458-19	1		30 Amp
	301-9682	1	0.62" Circuit Breaker Depth	320-1458-20	1		35 Amp
	319-0285	1	1.50" Circuit Breaker Depth	320-1458-21	1		40 Amp
3	800-0028	5	2.12" Circuit Breaker Depth	320-1458-22	1		45 Amp
			Screw, Cap - Hex Head (5/16 x 18 x 1")	320-1458-23	1		50 Amp
4	526-0022	5	Washer, Flat	320-1458-24	1		60 Amp
5	850-0045	5	Washer, Lock	320-1458-25	1		70 Amp
6	862-0015	5	Nut, Hex	320-1458-26	1		80 Amp
7			Washer, Flat	320-1458-27	1		90 Amp
	526-0048	4	#8	320-1458-28	1		100 Amp
	526-0008	4	#10	320-1458-29	1		110 Amp
	526-0108	4	1/4"	320-1458-30	1		125 Amp
8			Screw, Round Head	320-1458-31	1		150 Amp
	812-0094	4	#8 - 32 x 3-1/2"	320-1459-08	1		175 Amp
	813-0118	4	#10 - 32 x 4-1/2"	320-1459-09	1		200 Amp
	812-0165	4	1/4 - 20 x 4-1/2"	320-1459-10	1		225 Amp
	812-0157	4	1/4 - 20 x 1-3/4"	320-1460-06	1		250 Amp
9			Washer, Lock	320-1460-07	1		300 Amp
	850-0025	4	#8	320-1460-08	1		350 Amp
	850-0040	4	1/4"	320-1460-09	1		400 Amp
10	301-9669	2	Panel, Breaker - Circuit	320-1460-10	1		450 Amp
11	301-9668	1	Box, Breaker - Circuit	320-1460-11	1		500 Amp
12			Breaker, Circuit	320-1460-12	1		600 Amp
			2 Pole				600 Volt
			240 Volt	320-1458-34	1		20 Amp
	320-1511-11	1	70 Amp	320-1458-35	1		25 Amp
	320-1511-12	1	80 Amp	320-1458-36	1		30 Amp
	320-1511-13	1	90 Amp	320-1458-37	1		35 Amp
	320-1511-14	1	100 Amp	320-1458-38	1		40 Amp
	320-1512-05	1	110 Amp	320-1458-39	1		45 Amp
	320-1555-01	1	125 Amp	320-1458-40	1		50 Amp
	320-1555-02	1	150 Amp	320-1458-41	1		60 Amp
	320-1555-03	1	175 Amp	320-1458-42	1		70 Amp
	320-1555-04	1	200 Amp	320-1458-43	1		80 Amp
	320-1555-05	1	225 Amp	320-1458-44	1		90 Amp
	320-1555-11	1	250 Amp	320-1458-45	1		100 Amp
	320-1555-12	1	300 Amp	320-1458-46	1		110 Amp
	320-1555-13	1	350 Amp	320-1458-47	1		125 Amp
	320-1555-14	1	400 Amp	320-1458-48	1		150 Amp
	320-1513-10	1	450 Amp	320-1459-08	1		175 Amp
	320-1513-11	1	500 Amp	320-1459-09	1		200 Amp
	320-1513-12	1	600 Amp	320-1459-10	1		225 Amp
			3 Pole	320-1460-06	1		250 Amp
			240 Volt	320-1460-07	1		300 Amp
	320-1458-09	1	50 Amp	320-1460-08	1		350 Amp
	320-1458-10	1	60 Amp	320-1460-09	1		400 Amp
	320-1458-11	1	70 Amp	320-1460-10	1		450 Amp
	320-1458-12	1	80 Amp	320-1460-11	1		500 Amp
	320-1458-13	1	90 Amp	320-1460-12	1		600 Amp
	320-1458-14	1	100 Amp	13	98-2304	1	Decal, Warning - Circuit Breaker
	320-1458-29	1	110 Amp	898-0869	1		Sleeving, Insulation - 4"
	320-1555-06	1	125 Amp	898-0867	1		Sleeving, Insulation - 4"
	320-1555-07	1	150 Amp	898-0865	1		Sleeving, Insulation - 4"
	320-1555-08	1	175 Amp	898-0863	1		Sleeving, Insulation - 4"
	320-1555-09	1	200 Amp				
	320-1555-10	1	225 Amp				
	320-1555-15	1	250 Amp				
	320-1555-16	1	300 Amp				
	320-1555-17	1	350 Amp				
	320-1555-18	1	400 Amp				
	320-1460-10	1	450 Amp				
	320-1460-11	1	500 Amp				
	320-1460-12	1	600 Amp				

Wattmeter



REF NO.	PART NO.	QTY USED	PART DESCRIPTION
1	821-0017	2	Screw, Lock (5/16-18 x 1/2")
2	850-0045	2	Washer, Lock (5/16-18)
3	862-0014	2	Nut, Hex (5/16-18)
4	860-0008	8	Nut, HMS (8-32")
5	856-0002	16	Washer, Lock - E/T (8)
6	302-1833-01	1	Transducer, Watt
7	402-0354	4	Mount, Shock
8	301-6987	1	Bracket, Transducer - Watts

REF NO.	PART NO.	QTY USED	PART DESCRIPTION
9	338-1936	1	Harness, Transducer - Watts
10	302-1722	1	Meter, DC (Wattmeter)
11	302-1721-06	1	Dial, Wattmeter
12	813-0102	2	Screw, Machine - Round Head (#10-32 x 5/8")
13	319-0030	1	Plate, Transducer
14	332-0942	3	Tie, Cable