



Parts Manual

Our energy working for you.™



**Power
Generation**

Transfer Switch

40/70/125 Amps

OTECSEA (Spec A)

MODEL IDENTIFICATION

This catalog covers models produced under the Cummins®/Onan® and Cummins Power Generation brand names.

To avoid errors or delay in filling your parts order, always give the MODEL, SPEC NO. and SERIAL NO. from the Cummins Power Generation nameplate.

For handy reference, insert your nameplate information in the spaces below.

MODEL AND SPEC NO.

SERIAL NO.

DIGITAL CONTROL SOFTWARE VERSION AND DATE (IF APPLICABLE)

SAFETY PRECAUTIONS

The following symbols are used in Cummins Power Generation manuals to alert users to the potentially dangerous conditions relating to maintenance of equipment and replacement of parts. Please read and observe.



This symbol warns of immediate hazards which will result in severe personal injury or death.



This symbol refers to a hazard or unsafe practice which can result in severe personal injury or death.



This symbol refers to a hazard or unsafe practice which can result in severe personal injury or product or property damage.

PRODUCT SAFETY PRECAUTIONS



Service and repair of Cummins Power Generation equipment must be performed by trained, experienced personnel only. Improper service or repair may result in property damage, severe personal injury or death. Do not use this catalog as a guide to servicing your equipment. Read and follow the IMPORTANT SAFETY INSTRUCTIONS in the Service Manual appropriate for the equipment you are working on.



Contact with USED ENGINE OILS has been identified by a United States federal agency and some USA state agencies as causing CANCER or REPRODUCTIVE TOXICITY. When checking or changing engine oils take all necessary precautions not to ingest, breathe the fumes or contact the used oil.



Contact with ASBESTOS has been identified by a United States federal agency and some USA state agencies as causing CANCER or REPRODUCTIVE TOXICITY. When handling engine gaskets take all necessary precautions not to ingest, breathe or contact the dust from the gaskets! Use adequate ventilation and wear protective gloves, masks and clothing!



Contact with BENZINE and LEAD, found in gasoline, fuel additives and solvents has been identified by a United States federal agency and some USA state agencies as causing CANCER or REPRODUCTIVE TOXICITY. When checking, draining or adding gasoline and fuel additives or using solvents take all necessary precautions not to ingest, breathe the fumes or contact the liquids. Use adequate ventilation and wear protective gloves, masks and protective clothing!

Introduction

This catalog applies to the Cummins Power Generation OTECSE 40/70/125 Amp Transfer Switch. Each illustrated part is identified by a reference number corresponding to the same reference number in the parts list for that group. Parts illustrations are typical. Using the model and spec number from the switch box nameplate, select the parts that apply to your Transfer Switch. Unless otherwise noted in the parts description, parts are interchangeable between models.

Feature Options

Code	Description	Code	Description
A028	3-Pole Switch	L201	Auxiliary Relay – 12 VDC Coil
A035	Utility to Generator Set Applications	L202	Auxiliary Relay – Emergency Position – 12 VDC
A041	One Phase – 2 or 3 wire	L203	Auxiliary Relay – Normal Position – 12 VDC
A042	Three Phase – 3 or 4 wire	M003	Terminal Block – 30 Points
A044	Frequency – 60 Hz	M032	Elevator Signal – Relay
A045	Frequency – 50 Hz	M033	Genset Starting Battery – 12 VDC
B001	Cabinet – Type 1	M034	Genset Starting Battery – 24 VDC
B002	Cabinet – Type 3R	R020	Voltage – 120
B010	Cabinet – Type 12	R021	Voltage – 208
C027	Cover Guard	R022	Voltage – 220
J030	Exercise Clock – External	R023	Voltage – 240
K001	Battery Charger – 2 Amp, 12/24V	R024	Voltage – 380
KB59	Battery Charger – 15 Amp, 12V	R025	Voltage – 416
KB60	Battery Charger – 12 Amp, 24V	R026	Voltage – 480
L101	Auxiliary Relay – 24 VDC Coil	R035	Voltage – 440
L102	Auxiliary Relay – Emergency Position – 24 VDC	R038	Voltage – 190
L103	Auxiliary Relay – Normal Position – 24 VDC	S043	UL Listed

Index

A

Actuator, Linear – Transfer Switch, **7**

B

Bar, Bus – Transfer Switch, **5, 7**

Block and Crossbar Assembly – Emergency – Transfer Switch, **7**

Block and Crossbar Assembly – Transfer Switch, **7**

Block, Terminal, **17**

Box, Control – NEMA 1, **9**

Box, Control – Type 12, **11**

Box, Control – Type 3R, **11**

Bracket, Circuit Breaker – Transfer Switch, **5**

Bracket, End – Auxiliary Relay, **15**

Breaker, Circuit, **19**

Breaker, Circuit – Transfer Switch, **7**

C

Cable, Shielded – Transfer Switch, **5**

Capacitor – Transfer Switch, **7**

Charger, Battery – 15/12 Amp, 12/24 Volt, **14**

Charger, Battery – 2 Amp, 12/24 Volt, **13**

Contact, Auxiliary – Transfer Switch, **7**

Control – NEMA 1, **9**

Control – Type 12, **11**

Control – Type 3R, **11**

Cover, Controller, **16**

H

Handle, Barrier – Transfer Switch, **7**

Harness, Main, **9, 11**

Harness, Transfer Switch, **7**

L

Labels, **21**

Lug, Solderless – Transfer Switch, **5, 7**

P

Plate, Mounting – Transfer Switch, **5**

Plate, Relay, **12**

R

Rail, Terminal – Auxiliary Relay, **15**

Relay, Auxiliary, **15**

Relay, Control – Auxiliary Relay, **15**

Relay, Elevator Signal, **18**

Rod, Actuator – Transfer Switch, **7**

T

Transfer Switch Assembly, **5, 7**

Transformer, Power – NEMA 1, **9**

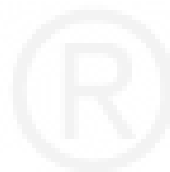
Transformer, Power – Type 3R and 12, **11**



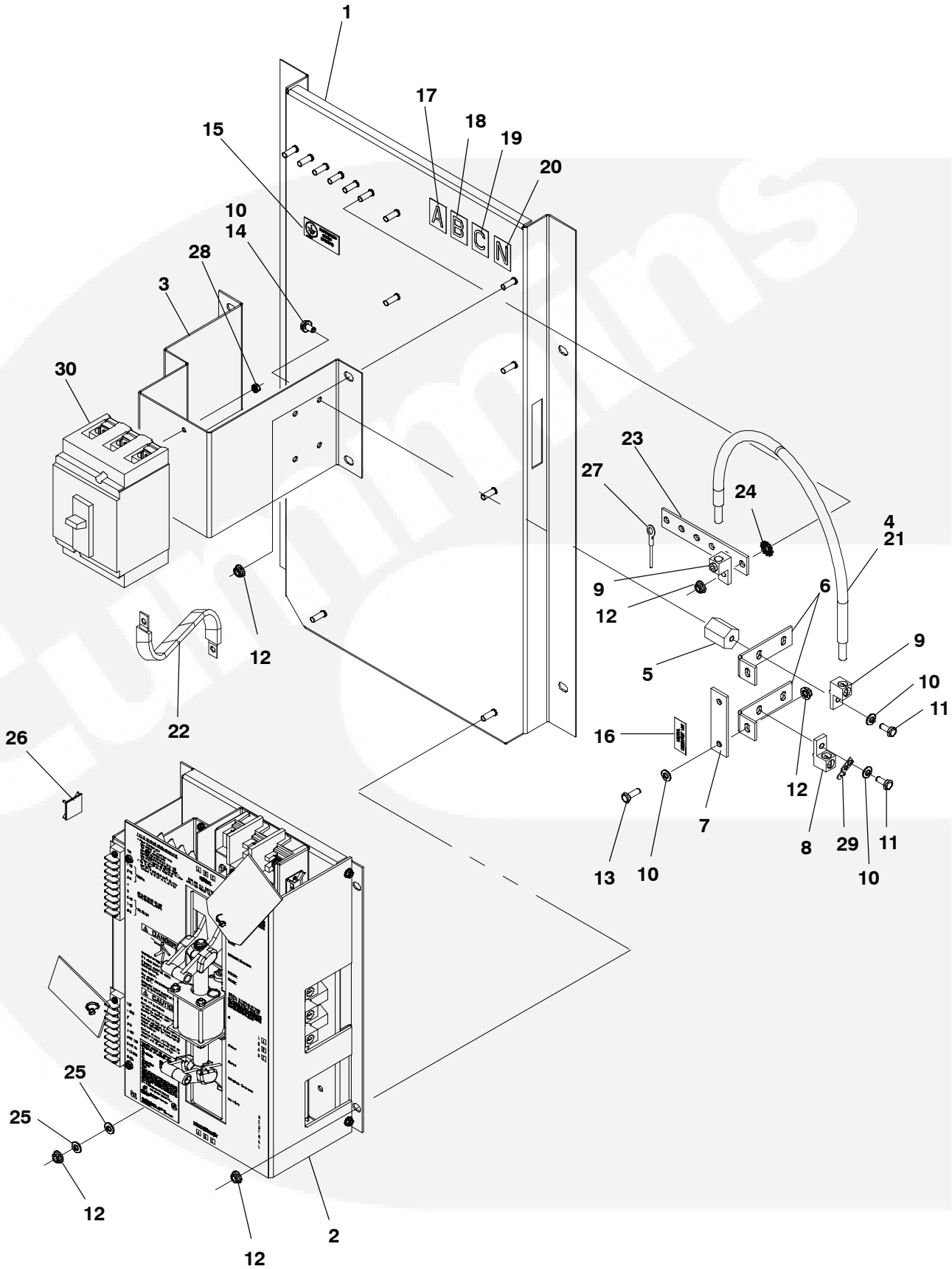
Abbreviations

Some of the following abbreviations may be used throughout this Parts Catalog:

AC	Alternating Current	MCM	Metric Circular Mils
Amp	Ampere	mm	Millimeter
A/R	As Required	MOH	Mobile Off Highway
AVR	Automatic Voltage Regulator	NFS	Not For Sale
AWG	American Wire Gauge	NPT	National Pipe Thread
CSA	Canadian Standard Association	OD	Outside Diameter
DC	Direct Current	oz.	Ounce
Deg.	Degree	PCB	Printed Circuit Board
EFC	Electronic Fuel Control	Ph	Phase
EIT	External/Internal Tooth	PMG	Permanent Magnet Generator
EPROM	Erasable Programmable Read Only Memory	PT/CT	Potential Transformer/ Current Transformer
ET	External Tooth	RFI	Radio Frequency Interference
GFI	Ground Fault Interrupter	RT	Right
ID	Inside Diameter	Spec	Specification
IEC	International Electrotechnical Commission	Thk	Thick
IT	Internal Tooth	UL	Underwriters Laboratories Inc.
kW	Kilowatt	UNC	Union National Coarse
LPG	Liquid Petroleum Gas	UNF	Union National Fine
LT	Left	VAC	Volts Alternating Current
M(meter number)	Meter	VDC	Volts Direct Current
		W/(ET, IT, EIT)	With



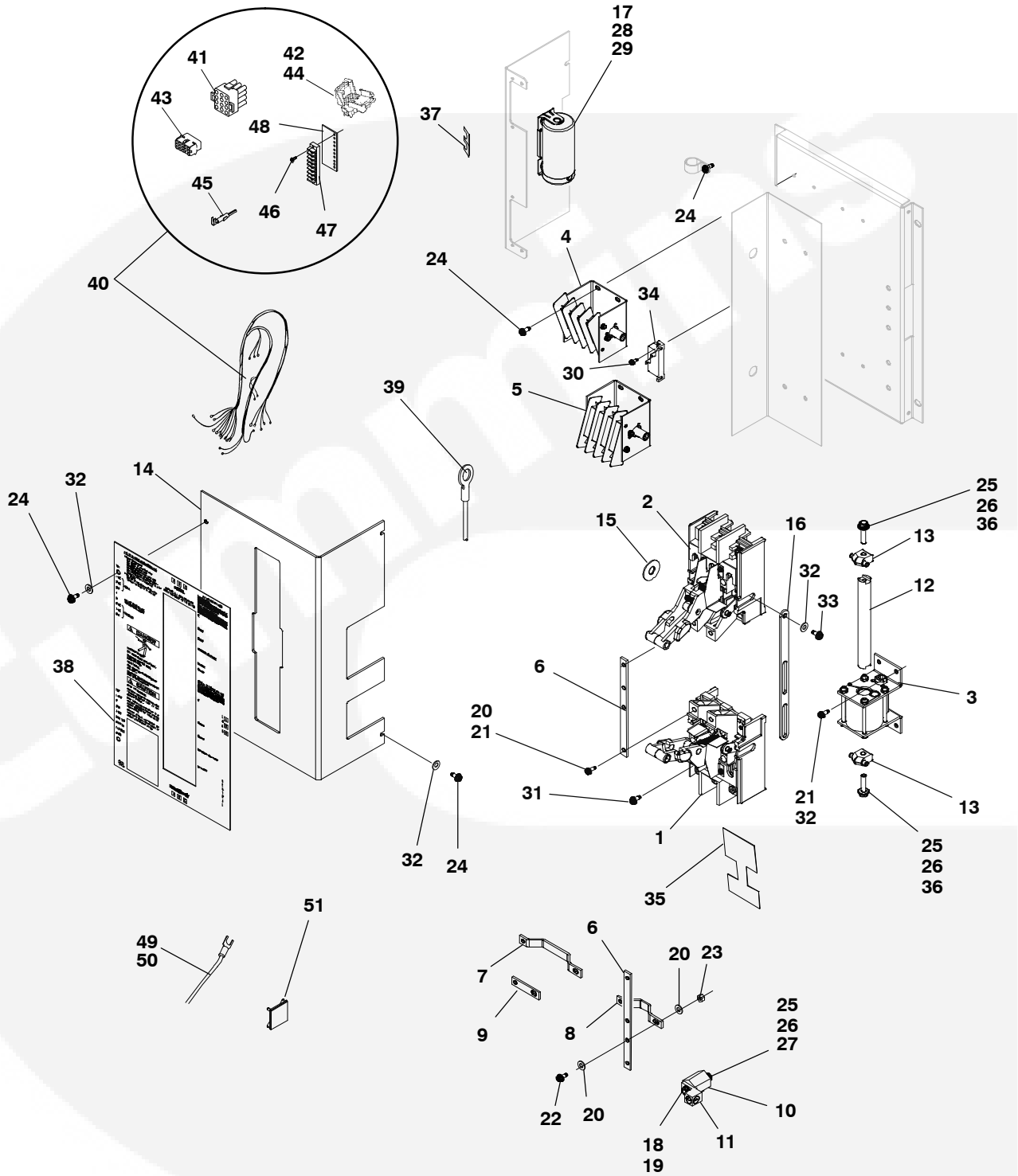
Transfer Switch



Transfer Switch

REF NO.	PART NO.	QTY USED	PART DESCRIPTION	REF NO.	PART NO.	QTY USED	PART DESCRIPTION
1	319-6369-02	1	Plate, Mounting	15	098-6635	1	Label, Ground
2		1	Switch, Transfer (See Page 7 for Components)	16	098-8268	1	Label, Information (Neutral Disconnect)
3	319-6368-02	1	Bracket, Circuit Breaker	17	098-5854-01	2	Label, Bus Marking (A)
4	334-2353	1	Cable, Shielded	18	098-5854-02	2	Label, Bus Marking (B)
5	332-2370	4	Standoff, Insulator	19	098-5854-03	2	Label, Bus Marking (C)
6	337-3913	2	Bar, Bus	20	098-5854-04	2	Label, Bus Marking (N)
7	337-3914	1	Bar, Bus	21	098-7700	1	Label, Bonding Jumper
8	332-3084	3	Lug, Solderless	22	337-4088	3	Bar, Bus - Flexible
9	332-3647	7	Lug, Solderless	23	337-4085	1	Bar, Bus - Ground
10	851-0027	10	Washer, Spring (1/4)	24	856-0006	6	Washer, Lock - W/EIT (1/4)
11	800-0004	4	Screw, Cap - Hex Head (1/4-20 x .62)	25	526-0018	2	Washer, Flat (1/4)
12	870-0212	16	Nut, Hex - Whiz Loc (1/4-20)	26	332-2420	2	Mount, Cable Tie
13	800-0005	2	Screw, Cap - Hex Head (1/4-20 x .75)	27	226-4990-02	1	Lead
14	800-0003	4	Screw, Cap - Hex Head (1/4-20 x .50)	28	870-0221	2	Nut, Hex - W/ET (#8-32)
				29	332-2366	2	Terminal
				30		1	Breaker, Circuit (See Page 19 for Components)

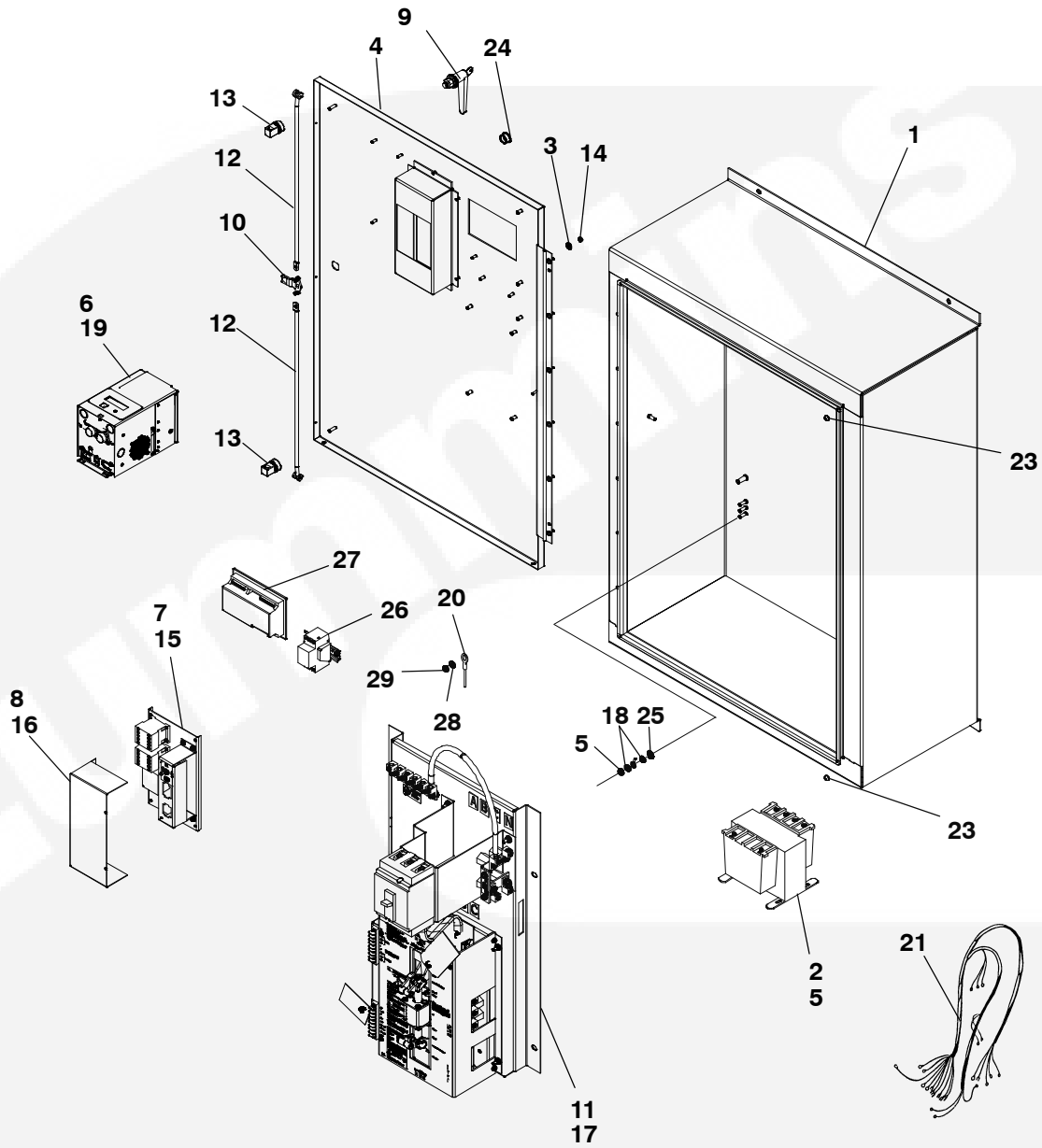
Transfer Switch



Transfer Switch

REF NO.	PART NO.	QTY USED	PART DESCRIPTION	REF NO.	PART NO.	QTY USED	PART DESCRIPTION
1	306-5017-02	1	Block and Crossbar Assembly - Emergency	29	870-0131	A/R	Nut, Hex - W/ET (#10-32)
2	306-5404	1	Block and Crossbar Assembly	30	815-0651	6	Screw, Pan Head - Cross Recessed - W/ET (#6-32 x .75)
3			Actuator, Linear				
	306-3401-01	1	115 VAC	31	815-0653	4	Screw, Pan Head - Cross Recessed - W/ET (#10-32 x 1.75)
	306-3401-03	1	208/220/240 VAC				
	306-3401-05	1	380/416 VAC				
	306-3401-06	1	440/480 VAC	32	526-0008	7	Washer, Flat (#10)
4	306-4746	1	Contact, Auxiliary (Normal)	33	815-0538	2	Screw, Pan Head - Cross Recessed - W/ET (#8-32 x .500)
5	306-4747	1	Contact, Auxiliary (Emergency)				
6	337-2314	3	Bar, Bus - Jumper				
7	337-2315	1	Bar, Bus - Load	34			Breaker, Circuit
8	337-2316	1	Bar, Bus - Load		320-0608	1	115 VAC
9	337-2313	1	Bar, Bus - Load		320-0606	1	190 VAC
10	332-2370	3	Standoff, Insulator		320-0606	1	208/220/240 VAC
11	332-3084	3	Lug, Solderless		320-0876	2	380/416 VAC
12	306-3395	1	Rod, Actuator		320-0876	2	440/480 VAC
13	306-3400-01	2	Rod, End	35	306-1989	2	Handle, Barrier
14	306-3396	1	Cover, Switch	36	114-0023	2	Screw, Cap - Hex Head (1/4-20 x 1.25)
15	306-5105	2	Barrier, Phase				
16	306-3397	1	Bar, Interlock	37	332-2605	1	Jumper, Terminal
17			Capacitor	38	098-7674	1	Label, Cover
	312-0257-S3	1	115 VAC	39	226-3380	1	Lead (380/416/440/480 VAC)
	312-0257-S2	1	190 VAC	40	338-4896	1	Harness, Switch (Includes the Parts Marked ^)
	312-0203-S0	1	208/220/240 VAC				
	312-0228	2	380/416 VAC	41	323-1314	1	^ Plug, Connector (12 Place)
	312-0257-S1	2	440/480 VAC	42	323-1316	2	^ Relief, Strain (12 Place)
18	851-0027	3	Washer, Spring (1/4)	43	323-1156	1	^ Plug, Connector (15 Place)
19	800-0004	3	Screw, Cap - Hex Head (1/4-20 x .62)	44	323-1158	2	^ Relief, Strain (15 Place)
				45	323-1199	23	^ Pin, Contact
20	851-0031	12	Washer, Spring (#10)	46	815-0937	4	^ Screw, Pan Head - Cross Recessed (#6-32 x 1/2)
21	821-0005	10	Screw, Hex - Locking (#10-32 x 1/2)	47	332-2832	2	^ Block, Terminal (8 Place)
22	815-0180	3	Screw, Cap - Hex Head (#10-32 x .750)	48	332-2903	2	^ Marker, Strip
23	870-0053	3	Nut, Hex (#10-32)	49	226-4796-05	1	Lead (NN)
24	815-0652	15	Screw, Slotted - Hex Head	50	226-4796-06	1	Lead (EN)
25	526-0018	5	Washer, Flat (1/4)	51	332-2420	A/R	Mount, Cable Tie
26	850-0040	5	Washer, Lock - Split (1/4)				
27	800-0003	3	Screw, Cap - Hex Head (1/4-20 x .50)	^ Parts Included in 338-4896 Wiring Harness.			
28	815-0029	A/R	Screw, Machine - Flat Head - Cross Recessed (#10-32 x .50)				

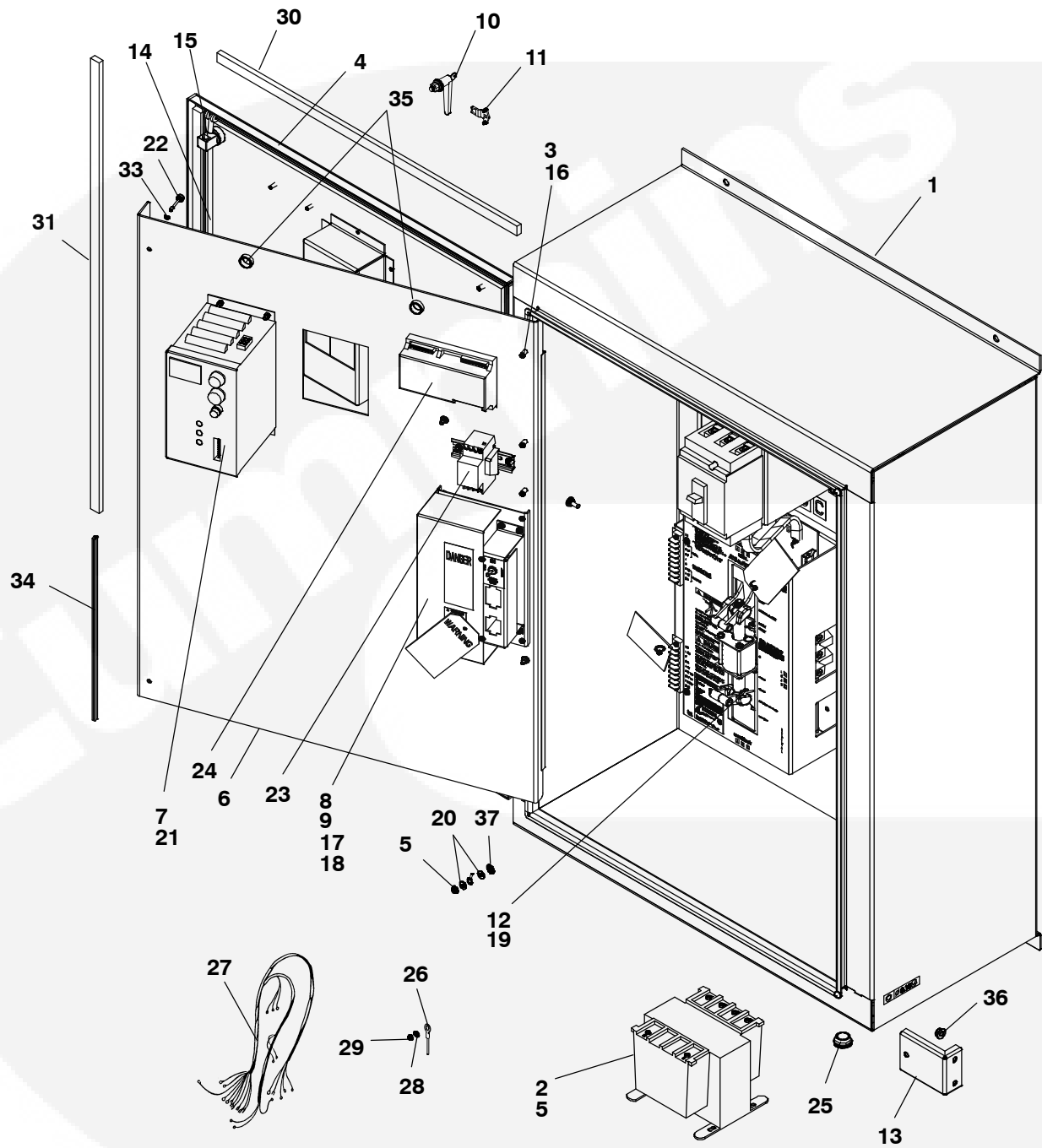
**Control
NEMA 1**



Control NEMA 1

REF NO.	PART NO.	QTY USED	PART DESCRIPTION	REF NO.	PART NO.	QTY USED	PART DESCRIPTION
1	319-3877-03	1	Box, Control	14	870-0131	6	Nut - W/ET (#10-32)
2	315-0661	1	Transformer, Power	15	815-0960-03	7	Screw, Cross Recessed - Pan Head W/ET (M4 x 0.7 x 10)
3	508-0233	6	Washer, Rubber	16	815-0792-02	2	Screw, Cross Recessed - Pan Head (M4 x 0.7 x 8)
4	319-6701-02	1	Door, Transfer Switch	17	870-0281	4	Nut, Hex - Whiz Lok (3/8-16)
5	870-0212	9	Nut, Hex - Whiz Lok (1/4-20)	18	526-0018	2	Washer, Flat (1/4)
6		1	Charger, Battery (See Pages 13 and 14)	19	862-0026-53	4	Nut, Hex (M5 x 0.8)
7			Relay - Assembly (See Page 12 for Components)	20	226-4916-01	1	Lead
	300-5893	1	12V	21	338-4434	1	Harness, Main
	300-5895	1	24V	22	323-1156	1	Plug, Circuit (Not Shown)
8	319-3942-02	1	Shield, Relay Plate	23	508-0231	2	Bumper
9	406-0613	1	Handle, Keyed	24	517-0137	4	Plug, Hole
10	306-3525	1	Latch, Cam (3 Point)	25	856-0006	1	Washer, Lock - W/EIT (1/4)
11	306-5234	1	Switch, Transfer (See Page 5 for Components)	26	541-1106	1	Kit, Exercise Clock
12	306-3526-02	2	Rod, Roller	27	300-5965	1	Display, Control
13	306-3467	2	Rod, Guide	28	853-2005	2	Washer - W/ET (M5)
				29	166-0771	2	Nut, Hex - Flange (M5)

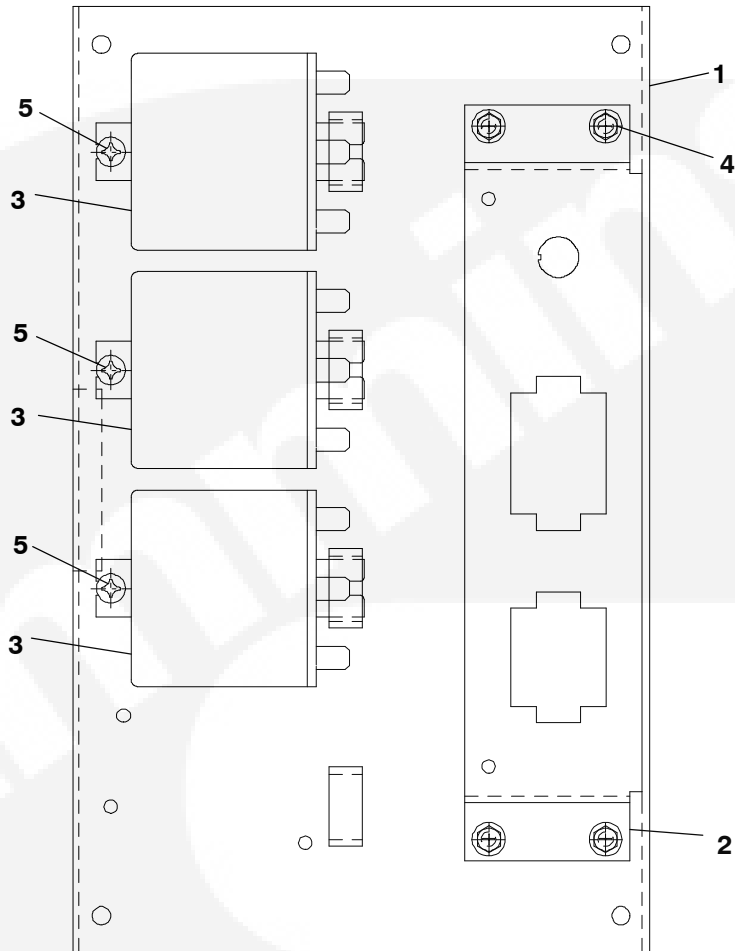
Control Type 3R and 12



Control Type 3R and 12

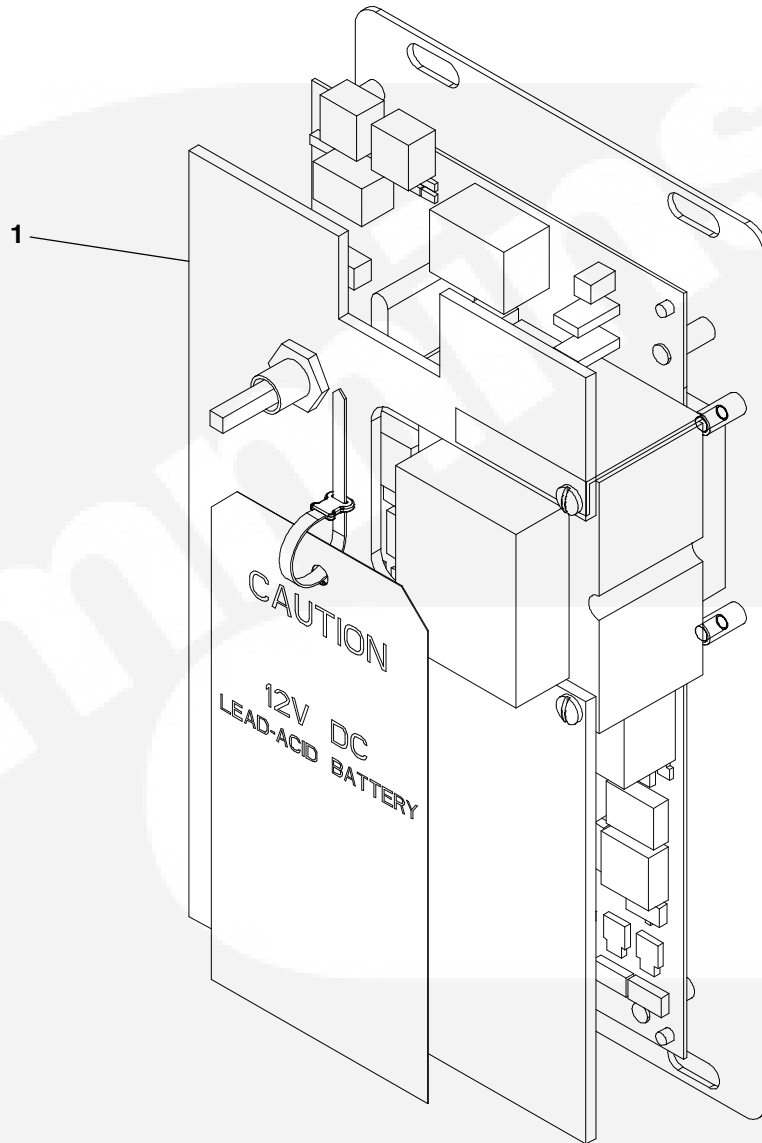
REF NO.	PART NO.	QTY USED	PART DESCRIPTION	REF NO.	PART NO.	QTY USED	PART DESCRIPTION
1			Box, Control	17	815-0960-03	7	Screw, Cross Recessed – Pan Head W/ET (M4 x 0.7 x 10)
	319-3877-03	1	Type 3R				
	319-3877-04	1	Type 12	18	815-0792-02	2	Screw, Cross Recessed – Pan Head (M4 x 0.7 x 8)
2	315-0661	1	Transformer, Power	19	870-0281	4	Nut, Hex – Whiz Lok (3/8-16)
3	508-0233	6	Washer, Rubber	20	526-0018	2	Washer, Flat (1/4)
4	319-6520-02	1	Door, Transfer Switch	21	862-0026-53	4	Nut, Hex (M5 x 0.8)
5	870-0212	9	Nut, Hex – Whiz Lok (1/4-20)	22	406-1146	2	Fastener, Panel
6	319-6664-02	1	Door, Transfer Switch	23	541-1106	1	Kit, Exercise Clock
7		1	Charger, Battery (See Pages 13 and 14)	24	300-5965	1	Display, Control
8			Relay – Assembly (See Page 12 for Components)	25	517-0266	4	Plug, Hole
	300-5893	1	12V	26	226-4916-01	1	Lead
	300-5895	1	24V	27	338-4434	1	Harness, Main
9	319-3942-02	1	Shield, Relay Plate	28	853-2005	2	Washer – W/ET (M5)
10	406-0613	1	Handle, Keyed	29	166-0771	2	Nut, Hex – Flange (M5)
11	306-3525	1	Latch, Cam (3 Point)	30	895-0293-05	2	Gasket, Door
12	306-5234	1	Switch, Transfer (See Page 5 for Components)	31	895-0293-06	2	Gasket, Door
13	319-7295-02	2	Plate, Mounting	32	323-1156	1	Plug, Circuit (Not Shown)
14	306-3526-02	2	Rod, Roller	33	406-1147	2	Washer, Retainer
15	306-3467	2	Rod, Guide	34	508-1045	2	Edge, Protection
16	870-0131	6	Nut – W/ET (#10-32)	35	517-0137	2	Plug, Hole
				36	870-2222	4	Nut, Hex (5/16-18)
				37	856-0006	1	Washer, Lock – W/EIT (1/4)

Relay Plate



REF NO.	PART NO.	QTY USED	PART DESCRIPTION	REF NO.	PART NO.	QTY USED	PART DESCRIPTION
1	319-3940-02	1	Plate, Relay	4	815-0955-03	4	Screw, Cap - Hex Head (M4 x 10)
2	319-3941-02	1	Bracket, Connector	5	815-0792-02	3	Screw, Cap - Hex Head - Cross Recessed (M4 x 8)
3	307-2929	3	Relay 12V				
	307-3054	3	Relay 24V				

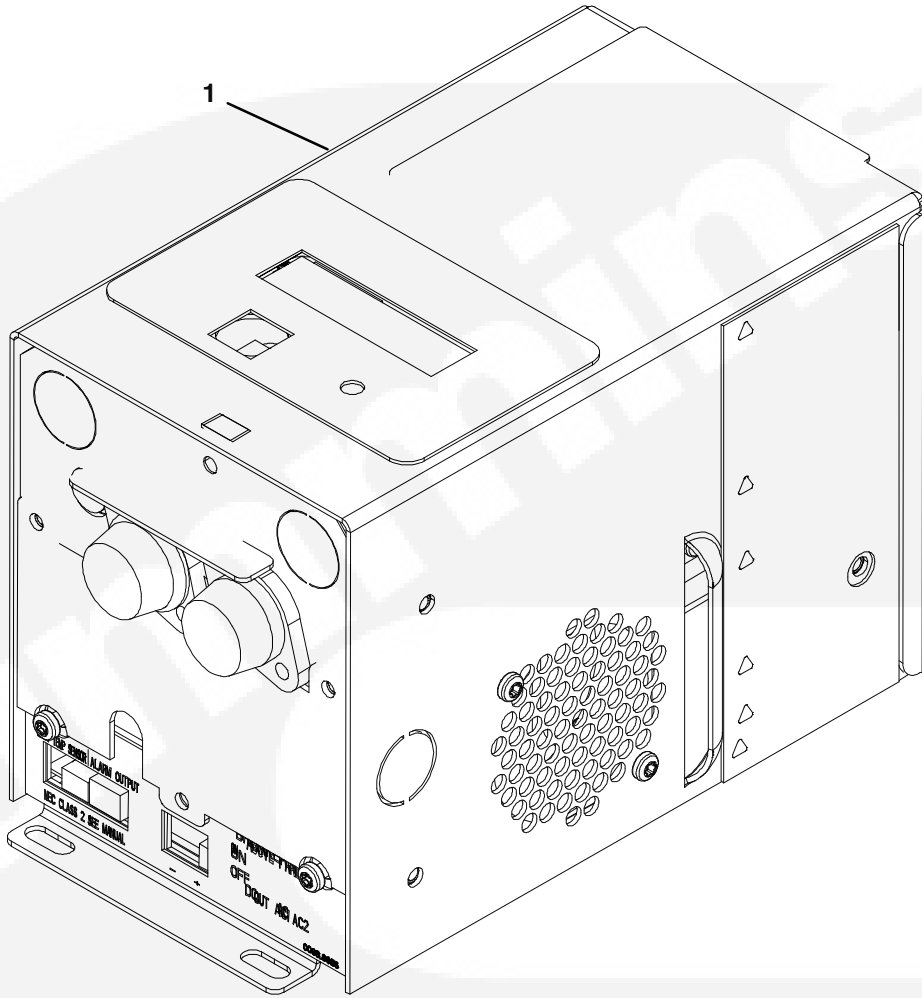
Battery Charger 2 Amp, 12/24 Volt



REF NO.	PART NO.	QTY USED	PART DESCRIPTION	REF NO.	PART NO.	QTY USED	PART DESCRIPTION
1			Charger, Battery				
	300-6026-01	1	120V				
	300-6026-02	1	208V				
	300-6026-03	1	240V				
	300-6026-05	1	380V				
	300-6026-06	1	416V				
	300-6026-07	1	480V				

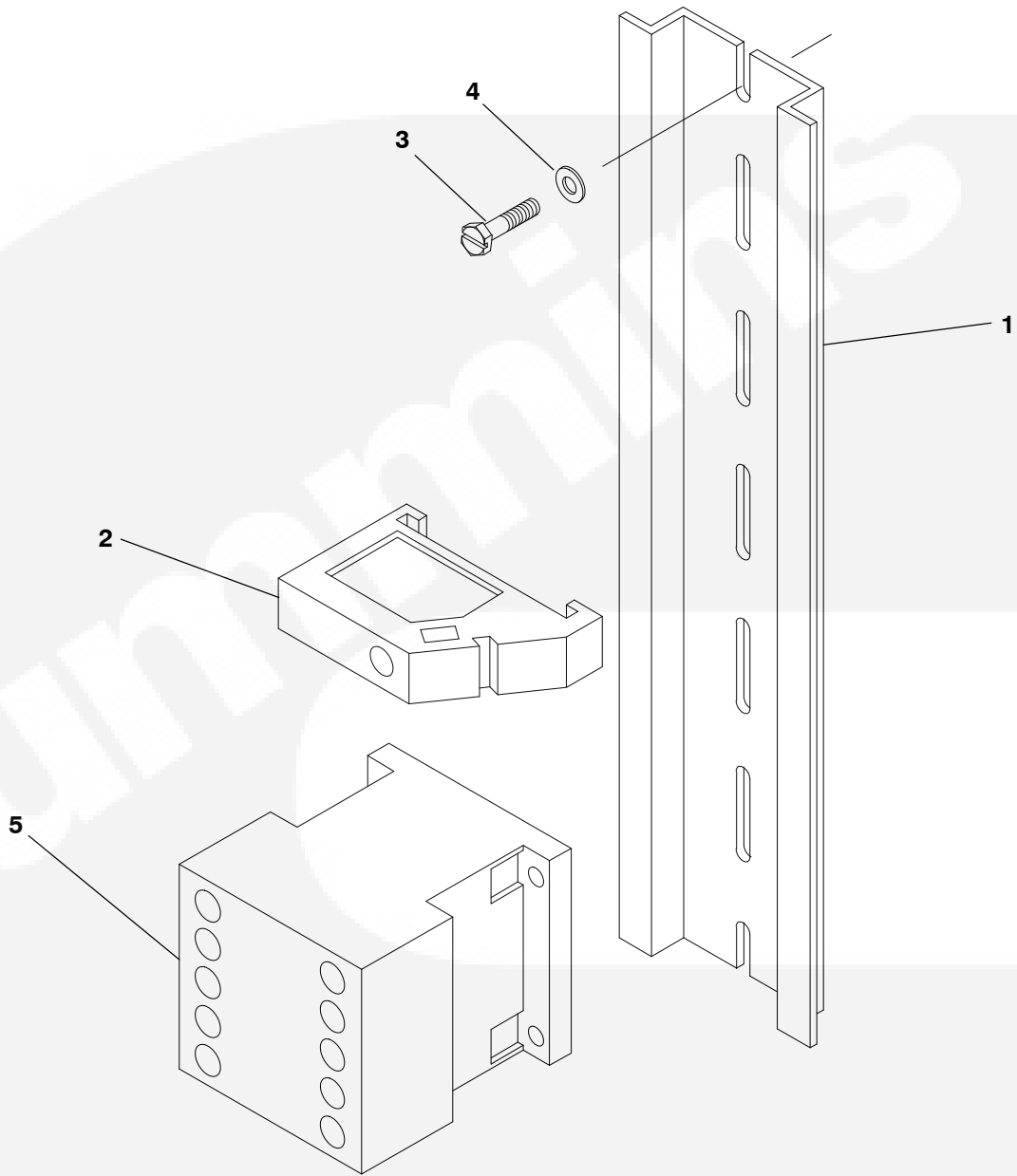


Battery Charger 15/12 Amp, 12/24 Volt



REF NO.	PART NO.	QTY USED	PART DESCRIPTION	REF NO.	PART NO.	QTY USED	PART DESCRIPTION
1			Charger, Battery				
	300-5878-13	1	120, 208, 240V				
	300-5878-15	1	380V				
	300-5878-16	1	416V				
	300-5878-17	1	480V				

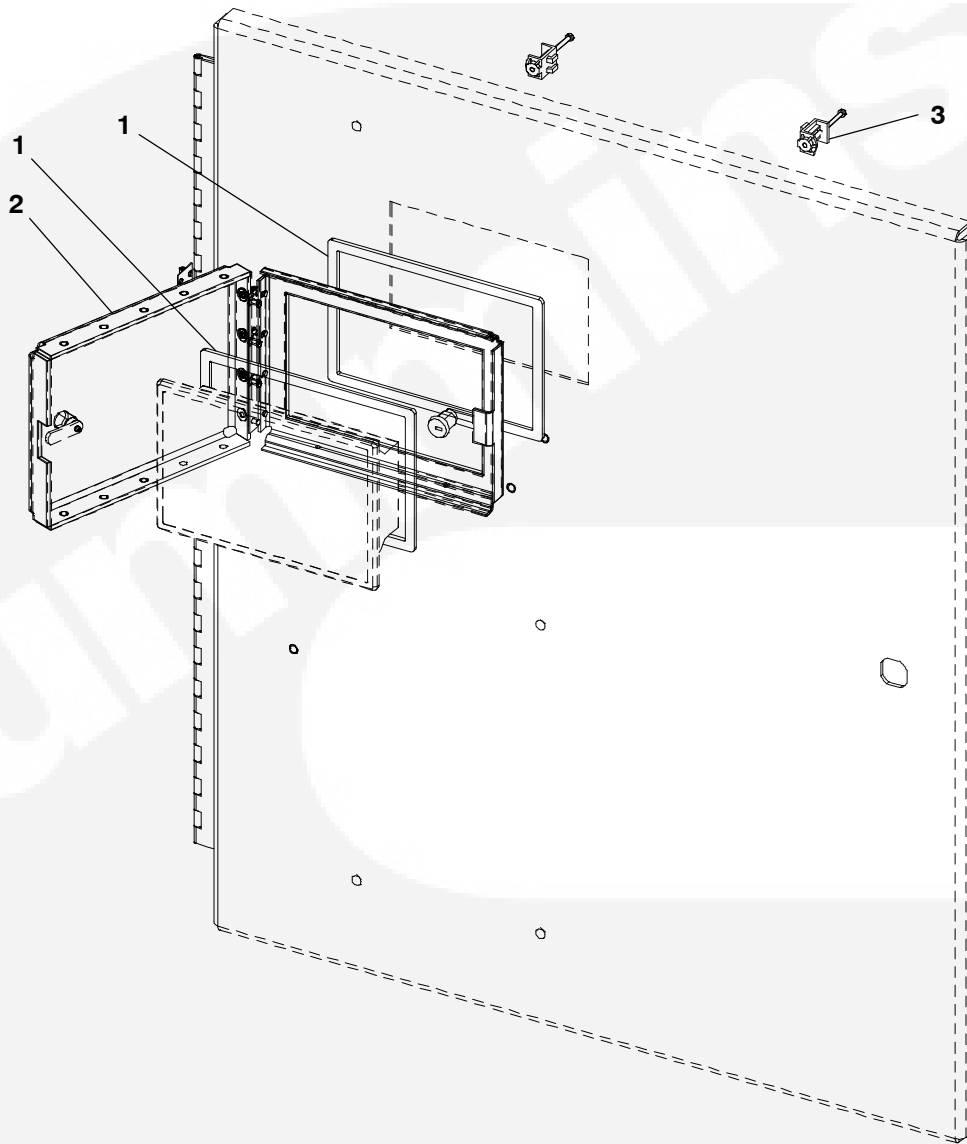
Auxiliary Relay



REF NO.	PART NO.	QTY USED	PART DESCRIPTION	REF NO.	PART NO.	QTY USED	PART DESCRIPTION
1	332-2879-04	1	Rail, Terminal	4	526-0003	2	Washer, Flat
2	332-2878	2	Bracket, End	5			Relay, Control
3	815-0955-03	2	Screw, Phillips/Hex Head - GND (M4 x 10)		307-2873	1	12 VDC
					307-2874	1	24 VDC

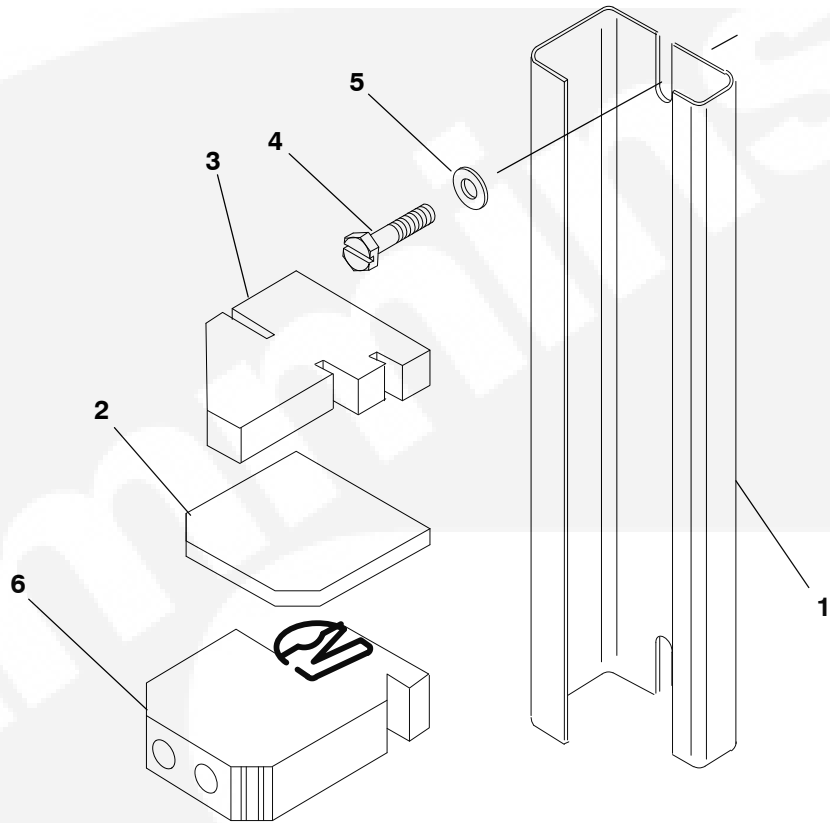


Controller Cover



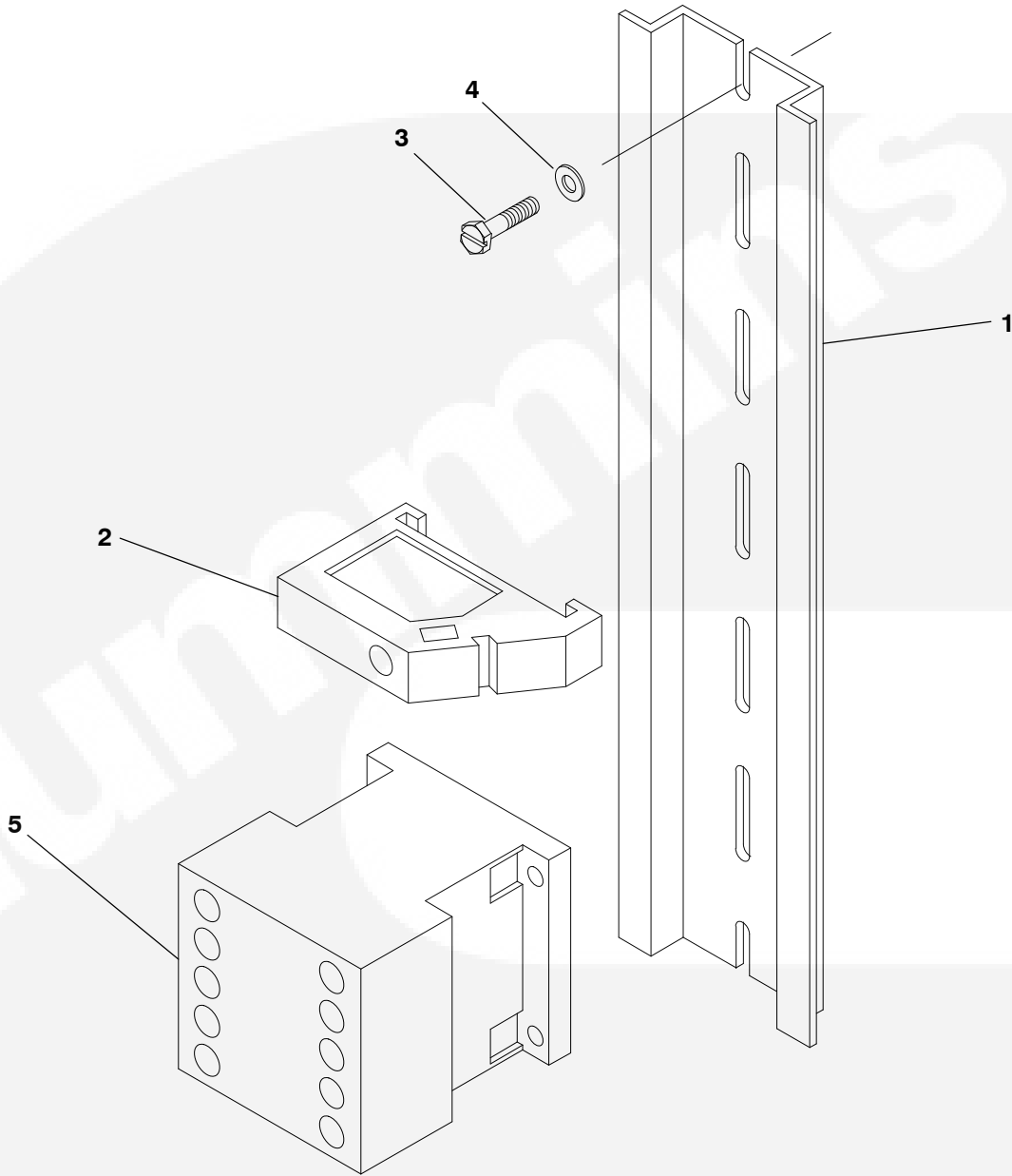
REF NO.	PART NO.	QTY USED	PART DESCRIPTION	REF NO.	PART NO.	QTY USED	PART DESCRIPTION
1	234-1066	2	Gasket, Cover	3	518-0774	2	Clip, Retaining
2	130-7197	1	Cover, Guard				

Terminal Block



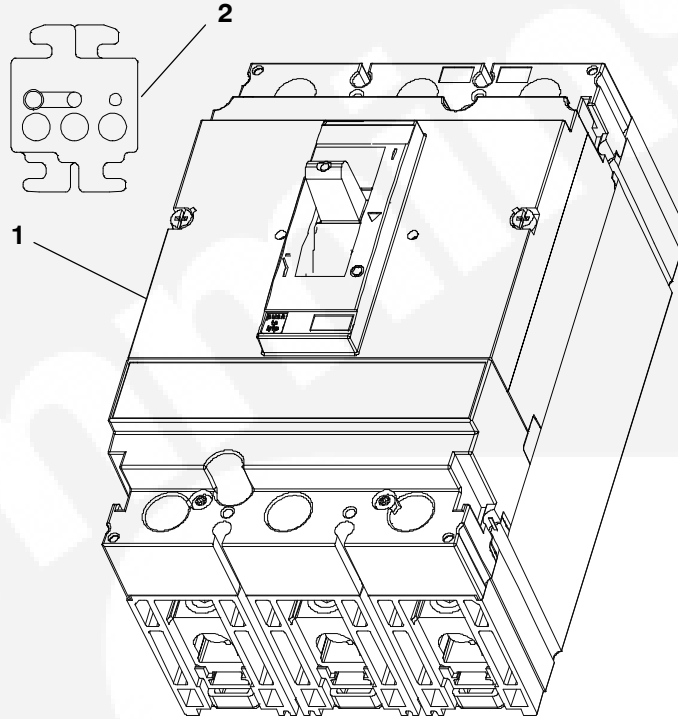
REF NO.	PART NO.	QTY USED	PART DESCRIPTION	REF NO.	PART NO.	QTY USED	PART DESCRIPTION
1	332-2837-09	1	Rail, Terminal Block	5	526-0003	2	Washer, Flat
2	332-2841	1	Plate, End - Terminal	6	332-2836-02	3	Block, Terminal (Sectional)
3	332-2839	2	Bracket, End - Terminal				
4	815-0955-03	2	Screw, Phillips/Hex Head - GND (M4 x 10)				

Elevator Signal Relay



REF NO.	PART NO.	QTY USED	PART DESCRIPTION	REF NO.	PART NO.	QTY USED	PART DESCRIPTION
1	332-2879-04	1	Rail, Terminal	4	526-0003	2	Washer, Flat
2	332-2878	2	Bracket, End	5	307-2873	1	Relay, Control
3	815-0955-03	2	Screw, Phillips/Hex Head - GND (M4 x 10)		307-2874	1	12 VDC
						1	24 VDC

Circuit Breaker



REF NO.	PART NO.	QTY USED	PART DESCRIPTION	REF NO.	PART NO.	QTY USED	PART DESCRIPTION
1			Breaker, Circuit (H-Frame)	2			Plate, Lock
	320-2346-73	1	125 Amp - 3 Pole		406-1234	1	
	320-2346-74	1	70 Amp - 3 Pole				
	320-2346-75	1	40 Amp - 3 Pole				

Labels

TYPE 1 Enclosure
 To provide protection against a limited amount of falling dirt.
 0098-6118.C

TYPE 3R Rainproof Enclosure
 To provide a degree of protection against falling rain; undamaged by the formation of ice on the enclosure.
 U.L. Listed Type 3 conduit hubs are to be used.
 0098-6119.C

TYPE 12 DUSTTIGHT ENCLOSURE
 Indoor use, to provide a degree of protection against circulating dust, falling dirt and dripping noncorrosive liquids.
 U.L. Listed Type 12 conduit hubs are to be used.
 0098-6776.B

4

REPLACE ALL COVERS BEFORE APPLYING POWER TO THE SWITCH

⚠ DANGER



More than one live circuit. To ensure against shock or accident hazard, disconnect all sources of supply before servicing. See diagram.

ADVERTISSEMENT-COUPER TOUTES LES SOURCES D'ALIMENTATION AVANT DE FAIRE L'ENTRETIEN ET LES REPARATIONS

0098-7735.A

5

⚠ WARNING
 BEFORE SERVICING PANEL
 PLACE SI TO OFF
 REMOVE PI
 0098_8228.A

6

**CUSTOMER CONNECTIONS
 TERMINAL TORQUE REQUIREMENTS**

TORQUE, POUND-INCHES (N-m) FOR SLOTTED SCREWS SMALLER THAN NO. 10 FOR USE WITH NO. 8 OR SMALLER CONDUCTORS, UNLESS OTHERWISE MARKED BY CONDUCTOR CONNECTIONS; USE NEXT SMALLER TORQUE FOR INTERMEDIATE SIZES.

SCREW SLOT LENGTH	SLOT WIDTH LESS THAN 0.47 in (1.2 mm)		SLOT WIDTH 0.47 in (1.2 mm) AND LARGER	
	inches	mm	lb-in	N-m
to 5/32	(4)	7	(0.79)	9
5/32	(4)	7	(0.79)	12
3/16	(4.8)	7	(0.79)	12
7/32	(5.6)	7	(0.79)	12
1/4	(6.4)	9	(1.0)	12
9/32	(7.1)	-	-	15
over 9/32	(7.1)	-	-	20

LUG TIGHTENING REQUIREMENTS

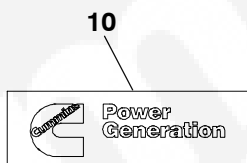
NORMAL, EMERGENCY, LOAD, NEUTRAL AND GROUND LUGS ACCEPT EITHER CU OR AL CONNECTORS. ALL OTHER TERMINALS ACCEPT ONLY CU. FOR PROPER OPERATION, TORQUE FIELD CONNECTIONS TO THE FOLLOWING VALUES:

SCREW SOCKET ACROSS FLATS	MINIMUM TIGHTENING TORQUE	
inches	mm	lb-in N-m
5/32	(4)	100 (11.3)
3/16	(5)	120 (13.6)
7/32	(6)	150 (16.9)
1/4	(7)	200 (22.6)
5/16	(8)	275 (31.1)
3/8	(10)	375 (42.4)
1/2	(13)	500 (56.5)
9/16	(14)	600 (67.8)

0098-6367.C

7

FIELD WIRING REQUIREMENTS
 TB3, KNA, KEA, KGS, J14, J15
 Use copper wire only.
 Torque to 7 Lbs-in (0.6 Nm)



- 8
- Exercise Enable
 - TDPT
 - Synch Check
 - TDNE
 - TDEN
 - Start-B
 - Start-A
 - S2 Available
 - S1 Available
 - Status
- 0098-7672.B

9

www.cumminspower.com

12

SUITABLE FOR USE AS SERVICE EQUIPMENT -NORMAL SOURCE ONLY

An additional disconnect must be readily available for the alternate source, unless the alternate source is an accessible generator and can be readily shut down.

0098-8851.A

14

WITHSTAND RATINGS


THIS TRANSFER SWITCH IS RATED FOR USE ON A CIRCUIT CAPABLE OF DELIVERING NOT MORE THAN INDICATED RMS SYMMETRICAL AMPERES FROM BELOW AT 480 VOLTS MAXIMUM.

SWITCH AMPERES	WCR @ 480V
40, 70, 125	35,000
150, 225, 250	65,000
300, 400, 600	65,000
800, 1000	65,000

0098-8620.A

13

⚠ DANGER



Hazardous Voltage.
 Will cause severe injury or death.
 Disconnect All electrical supply sources before servicing.

⚠ WARNING

Improper operation can cause severe personal injury or death. Read operator's manual before use. Operator's manual can be obtained from your dealer.

0098-7613.B

- 17
- TB2
 - GND
 - 2
 - B+
 - RMT
 - RMT TEST
 - XFR INH
 - RE-XFR INH
 - COM
 -

16

⚠ CAUTION
 FACTORY PROGRAMMED FOR
 24VDC BATTERY
 0098_8351.A

11

SERVICE DISCONNECT

NORMAL DISCONNECT

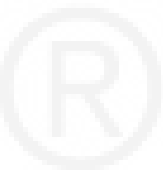
00-7789.A

15

⚠ CAUTION
 FACTORY PROGRAMMED FOR
 12VDC BATTERY
 0098_8350.A

Labels

REF NO.	PART NO.	QTY USED	PART DESCRIPTION	REF NO.	PART NO.	QTY USED	PART DESCRIPTION
1	098-6118	1	Label, Cabinet	10	098-7902-02	1	Label, Logo (White)
2	098-6119	1	Label, Cabinet	11	098-7786	1	Label, Service Disconnect
3	098-6776	1	Label, Cabinet	12	098-8851	1	Label, Information
4	098-7735	1	Label, Cover	13	098-7613	1	Label, Danger/Warning
5	098-8228	1	Label, Warning	14	098-8930	1	Label, Information
6	098-6367	1	Label, Torque	15	098-8350	1	Label, Instruction
7	098-7621	1	Label, Torque	16	098-8351	1	Label, Instruction
8	098-7672	1	Label, Function	17	098-8257	1	Label, Information
9	098-8280	1	Label, Information				



Numerical Index

<u>Part No.</u>	<u>Page</u>	<u>Part No.</u>	<u>Page</u>	<u>Part No.</u>	<u>Page</u>	<u>Part No.</u>	<u>Page</u>
098-5854-01, 5		300-6026-01, 13		319-6520-02, 11		406-1146, 11	
098-5854-02, 5		300-6026-02, 13		319-6664-02, 11		406-1147, 11	
098-5854-03, 5		300-6026-03, 13		319-6701-02, 9		406-1234, 19	
098-5854-04, 5		300-6026-05, 13		319-7295-02, 11		508-0231, 9	
098-6118, 21		300-6026-06, 13		320-0606, 7		508-0233, 9, 11	
098-6119, 21		300-6026-07, 13		320-0608, 7		508-1045, 11	
098-6367, 21		306-1989, 7		320-0876, 7		517-0137, 9, 11	
098-6635, 5		306-3395, 7		320-2346-73, 19		517-0266, 11	
098-6776, 21		306-3396, 7		320-2346-74, 19		518-0774, 16	
098-7613, 21		306-3397, 7		320-2346-75, 19		526-0003, 15, 17, 18	
098-7621, 21		306-3400-01, 7		323-1156, 7, 9, 11		526-0008, 7	
098-7672, 21		306-3401-01, 7		323-1158, 7		526-0018, 5, 7, 9, 11	
098-7674, 7		306-3401-03, 7		323-1199, 7		541-1106, 9, 11	
098-7700, 5		306-3401-05, 7		323-1314, 7		800-0003, 7	
098-7735, 21		306-3401-06, 7		323-1316, 7		800-0004, 5, 7	
098-7786, 21		306-3467, 9, 11		332-2366, 5		800-0005, 5	
098-7902-02, 21		306-3525, 9, 11		332-2370, 5, 7		815-0029, 7	
098-8228, 21		306-3526-02, 9, 11		332-2420, 5, 7		815-0180, 7	
098-8257, 21		306-4746, 7		332-2605, 7		815-0538, 7	
098-8268, 5		306-4747, 7		332-2832, 7		815-0651, 7	
098-8280, 21		306-5017-02, 7		332-2836-02, 17		815-0652, 7	
098-8350, 21		306-5105, 7		332-2837-09, 17		815-0653, 7	
098-8351, 21		306-5234, 9, 11		332-2839, 17		815-0792-02, 9, 11, 12	
098-8851, 21		306-5404, 7		332-2841, 17		815-0937, 7	
098-8930, 21		306-6369-02, 5		332-2878, 15, 18		815-0955-03, 12, 15, 17, 18	
114-0023, 7		307-2873, 15, 18		332-2879-04, 15, 18		815-0960-03, 9, 11	
130-7197, 16		307-2874, 15, 18		332-2903, 7		821-0005, 7	
166-0771, 9, 11		307-2929, 12		332-3084, 5, 7		850-0040, 7	
226-3380, 7		307-3054, 12		332-3647, 5		851-0027, 5, 7	
226-4796-05, 7		312-0203-S0, 7		334-2353, 5		851-0031, 7	
226-4796-06, 7		312-0228, 7		337-2313, 7		853-2005, 9, 11	
226-4916-01, 9, 11		312-0257-S1, 7		337-2314, 7		856-0006, 5, 9, 11	
226-4990-02, 5		312-0257-S2, 7		337-2315, 7		862-0026-53, 9, 11	
234-1066, 16		312-0257-S3, 7		337-2316, 7		870-0053, 7	
300-5878-13, 14		315-0661, 9, 11		337-3913, 5		870-0131, 7, 9, 11	
300-5878-15, 14		319-3877-03, 9, 11		337-3914, 5		870-0212, 5, 9, 11	
300-5878-16, 14		319-3877-04, 11		337-4085, 5		870-0221, 5	
300-5878-17, 14		319-3940-02, 12		337-4088, 5		870-0281, 9, 11	
300-5893, 9, 11		319-3941-02, 12		338-4434, 9, 11		870-2222, 11	
300-5895, 9, 11		319-3942-02, 9, 11		338-4896, 7		895-0293-05, 11	
300-5965, 9, 11		319-6368-02, 5		406-0613, 9, 11		895-0293-06, 11	

Cummins Power Generation

1400 73rd Ave. NE
Minneapolis, MN 55432 USA

Phone 1 763 574 5000

Toll-free 1 800 888 6626

Fax 1 763 574 5298

Email ask.powergen@cummins.com

www.cumminspower.com

Cummins®, the "C" logo, and "Our energy working for you." are trademarks of Cummins Inc.

©2010 Cummins Power Generation, Inc. All rights reserved.

