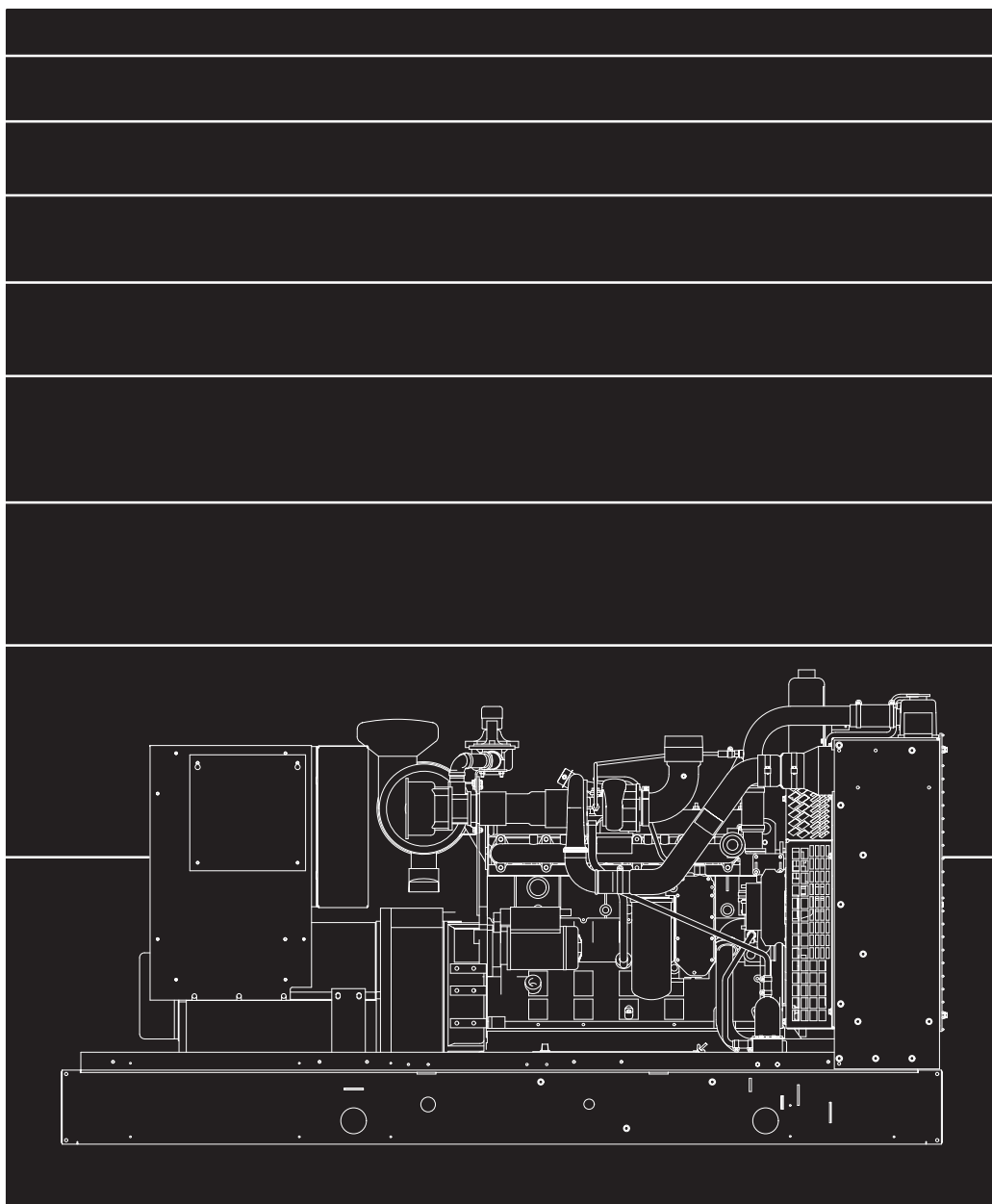




Parts Catalog

GGKB
GGKC
GGKD

Generator Set



MODEL IDENTIFICATION

To avoid errors or delay in filling your parts order, always give the MODEL, SPEC NO. and SERIAL NO. from the Onan nameplate.

For handy reference, insert your nameplate information in the spaces below.

MODEL AND SPEC NO.

SERIAL NO.

DIGITAL CONTROL SOFTWARE VERSION
AND DATE (IF APPLICABLE)

SAFETY PRECAUTIONS

The following symbols are used in Onan manuals to alert users to the potentially dangerous conditions relating to maintenance of equipment and replacement of parts. Please read and observe.



This symbol warns of immediate hazards which will result in severe personal injury or death.



This symbol refers to a hazard or unsafe practice which can result in severe personal injury or death.



This symbol refers to a hazard or unsafe practice which can result in severe personal injury or product or property damage.

PRODUCT SAFETY PRECAUTIONS



Service and repair of Onan equipment must be performed by trained, experienced personnel only. Improper service or repair may result in property damage, severe personal injury or death. Do not use this catalog as a guide to servicing your equipment. Read and follow the IMPORTANT SAFETY INSTRUCTIONS in the Service Manual appropriate for the equipment you are working on.



Contact with USED ENGINE OILS has been identified by a United States federal agency and some USA state agencies as causing CANCER or REPRODUCTIVE TOXICITY. When checking or changing engine oils take all necessary precautions not to ingest, breathe the fumes or contact the used oil.



Contact with ASBESTOS has been identified by a United States federal agency and some USA state agencies as causing CANCER or REPRODUCTIVE TOXICITY. When handling engine gaskets take all necessary precautions not to ingest, breathe or contact the dust from the gaskets! Use adequate ventilation and wear protective gloves, masks and clothing!



Contact with BENZINE and LEAD, found in gasoline, fuel additives and solvents has been identified by a United States federal agency and some USA state agencies as causing CANCER or REPRODUCTIVE TOXICITY. When checking, draining or adding gasoline and fuel additives or using solvents take all necessary precautions not to ingest, breathe the fumes or contact the liquids. Use adequate ventilation and wear protective gloves, masks and protective clothing!

Introduction

This catalog applies to the standard generator models GGKB, GGKC and GGKD as listed in the Generator Set Data Table. Parts are arranged in groups of related items and each illustrated part is identified by a reference number corresponding to the same reference number in the parts list. Parts illustrations are typical. Unless otherwise mentioned in the description or page heading, parts are interchangeable between models. Throughout this catalog left and right sides are determined by facing the engine end (front) of the set.

Engine parts that have been modified or added by Onan are identified in this catalog. All other engine replacement parts must be ordered from the engine manufacturer by referring to the engine manufacturer's nameplate and supplying all available information. Contact your nearest engine parts distributor for assistance in ordering replacement parts.

Replacement Engine

Onan/Cummins Generator Model	Cummins Engine Model
GGKB	GTA 8.3 G1
GGKC	GTA 8.3 G2
GGKD	GTA 8.3 G2

Generator Set Data Table

Model/ Specification	Electrical Data					Battery Voltage
	Watts	Volts	Hertz	Wire	Phase	
105GGKB*	105,000	#	50	4,6,12	1 or 3	12 VDC
125GGKB*	125,000	#	60	4,6,12	1 or 3	12 VDC
110GGKC*	110,000	#	50	4,6,12	1 or 3	12 VDC
140GGKC*	140,000	#	60	4,6,12	1 or 3	12 VDC
115GGKD*	115,000	#	50	4,6,12	1 or 3	12 VDC
150GGKD*	150,000	#	60	4,6,12	1 or 3	12 VDC

* – The Specification number denotes customer requested options or deviations from the standard model. The specification letter advances with major manufacturing changes.

– Broad Range Reconnectible.

Index

- Adapter, Duct – Radiator, **14**
- Adapter, Exhaust, **7**
- Adapter, Generator, **31**

- Bar, Neutral – Circuit Breaker Box – 700–1000 Amp, **43**
- Bell, End – Generator, **31**
- Block, Terminal – Generator, **31**
- Block, Terminal – Generator Heater, **28**
- Box, Circuit Breaker – 10–630 Amp, **41**
- Box, Circuit Breaker – 700–1000 Amp, **43**
- Box, Entrance, **25**
- Box, Terminal – Generator Heater, **28**
- Bracket, Bottle – Radiator, **13**
- Bracket, Charge Air Cooler – Radiator, **13**
- Bracket, Heater – Water Heater, **11**
- Bracket, Mounting – Circuit Breaker – 700–1000 Amp, **43**
- Bracket, Mounting – Circuit Breaker Box – 10–630 Amp, **41**
- Bracket, Mounting – Generator, **31**
- Bracket, Muffler – Residential, **9**
- Breaker, Circuit, **44**

- Cable, Battery, **4**
- Cable, Magnetic Pickup – Engine to Control Wiring Harness, **39**
- Cap, Radiator, **13**
- Cap, Rain – Muffler – Critical, **8**
- Cap, Rain – Muffler – Residential, **9**
- Cartridge, Heater – Generator, **28**
- Control, PowerCommand, **33**
- Cooler, Charge Air – Radiator, **13**
- Cover, Box – Control, **27**
- Cover, Circuit Breaker Box – 10–630 Amp, **41**
- Cover, Circuit Breaker Box – 700–1000 Amp, **43**
- Cover, End Bell, **29**
- Cover, Housing – Control, **27**
- Cover, Shroud – Radiator, **13**
- Cover, Stator, **31**
- Cover, Stub Up – Skid Pan, **23**
- Cushion, Vibration Isolating – Skid, **22**

- Disk, Drive – Generator, **31**
- Drain, Oil, **6**
- Drain, Radiator, **15**

- External Engine Parts, **4**

- Fan, Radiator, **13**

- Generator, **31**
- Grille, Radiator, **13**
- Guard, Alternator – Radiator, **13**
- Guard, Fan – Generator, **31**
- Guard, Fan – Radiator, **13**

- Harness, Wiring – Engine To Control, **39**
- Harness, Wiring – PMG, **29**
- Heater, Control, **33**
- Heater, Engine Coolant, **11**
- Hose, Engine Coolant – Vaporizer, **5**

- Hose, Oil Drain, **6**
- Hose, Radiator, **13**
- Housing, Control, **27**
- Housing, Generator Set – Quiet Site First Stage, **19**
- Housing, Generator Set – Quiet Site Second Stage, **21**
- Housing, Generator Set – Standard Weather Protective, **17**
- Hub, Drive – Generator, **31**

- Labels, Miscellaneous, **37**
- Lug, Solderless – Circuit Breaker Box – 10–630 Amp, **41**
- Lug, Solderless – Circuit Breaker Box – 700–1000 Amp, **43**
- Lug, Solderless – Entrance Box, **25**

- Module, Alarm, **35**
- Muffler – Critical, **8**
- Muffler – Residential, **9**

- Paint, **3**
- Pan, Skid, **23**
- Pin, Parallel – PMG, **29**
- Pyrometer, **34**

- Radiator, **13**
- Rectifier – Control Heater, **33**
- Rectifier – Engine to Control Wiring Harness, **39**
- Rotor, Generator, **31**
- Rotor, PMG, **29**

- Sealant, Thread, **3**
- Sender, Low Coolant Level, **10**
- Sender, Oil Pressure, **4**
- Sender, Temperature, **4**
- Shield, Rain – Muffler – Critical, **8**
- Shield, Rain – Muffler – Residential, **9**
- Shroud, Charge Air Cooler – Radiator, **13**
- Skid, **22**
- Stator, Generator, **32**
- Stator, PMG, **29**
- Strap, Electrical – Skid, **22**
- Support, Engine – Skid, **22**
- Switch, Low Engine Temperature, **4**
- Switch, Pressure, **4**
- Switch, Trip Alarm or Auxiliary Contact, **45**

- Tank, Coolant Recovery – Radiator, **13**
- Transformer, Current, **36**
- Tray, Battery, **24**
- Trip, Shunt, **45**
- Tube, Charge Air Cooler – Radiator, **13**
- Tube, Radiator, **13**
- Tube, Water Heater, **11**

- Valve, Shutoff – Oil Drain, **6**
- Valve, Shutoff – Radiator Drain, **15**
- Vaporizer, **5**
- Varistor – Generator, **31**
- Varistor, Metaloxide – Engine to Control Wiring Harness, **39**

- Wrapper, Box – Control, **27**

Abbreviations

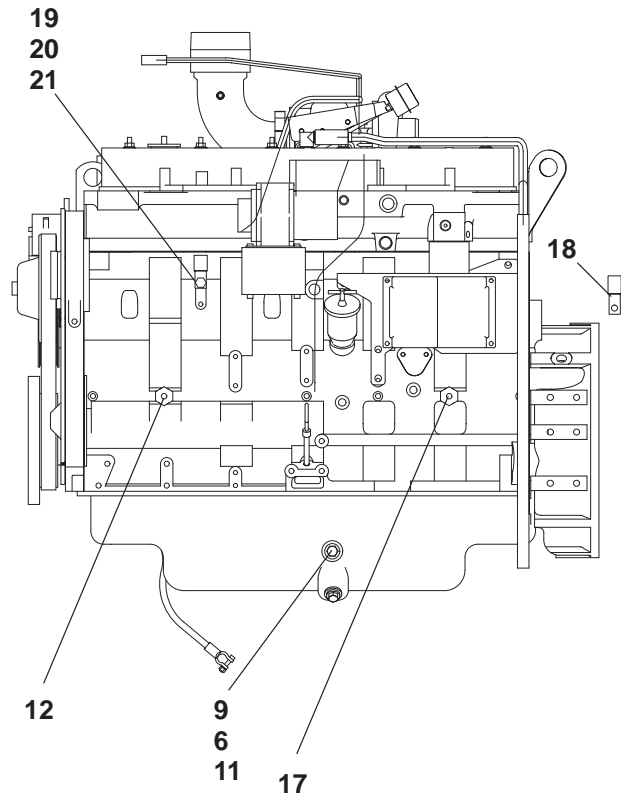
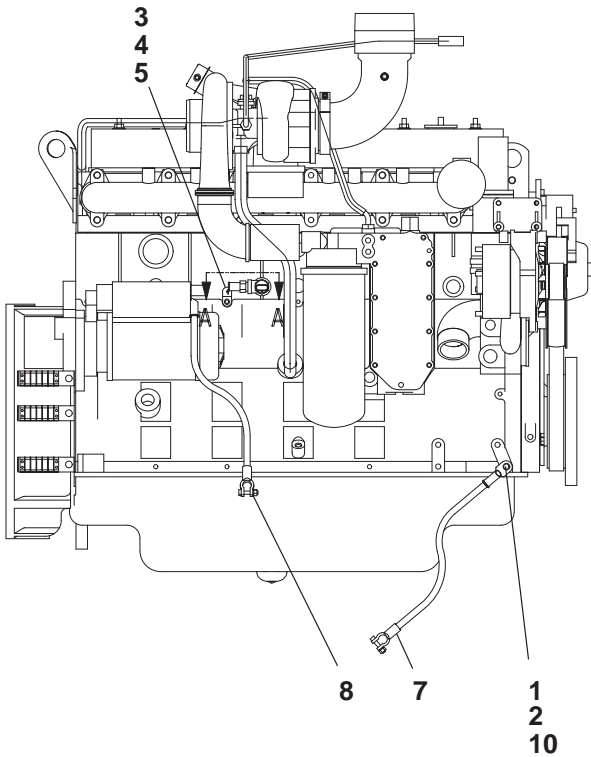
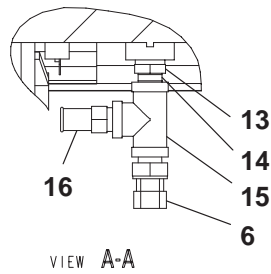
Some of the following abbreviations may be used throughout this Parts Catalog:

AC	Alternating Current	mm	Millimeter
Amp	Ampere	MOH	Mobil Off Highway
A/R	As Required	NFS	Not For Sale
AVR	Automatic Voltage Regulator	NPT	National Pipe Thread
AWG	American Wire Gauge	OD	Outside Diameter
Deg	Degree	oz.	Ounce
DC	Direct Current	PMG	Permanent Magnet Generator
EFC	Electronic Fuel Control	Ph	Phase
ET	External Tooth	PC	Printed Circuit
EIT	External/Internal Tooth	RFI	Radio Frequency Interference
GFI	Ground Fault Interrupter	RT	Right
ID	Inside Diameter	Spec	Specification
IT	Internal Tooth	Thk	Thick
IEC	International Electrotechnical Commission	UL	Underwriters Laboratories Inc.
		UNC	Union National Coarse
kW	Kilowatt	UNF	Union National Fine
LPG	Liquid Petroleum Gas	VAC	Volts Alternating Current
LT	Left	VDC	Volts Direct Current
M(meter Number)	Meter	W/(ET, IT, EIT)	With

Paint and Thread Sealant

REF NO.	PART NO.	QTY USED	PART DESCRIPTION	REF NO.	PART NO.	QTY USED	PART DESCRIPTION
			Onan Green Enamel (Non-Metallic)	518-0601	—		Sealant, Thread (6 ml Tube)
	525-0305	—	12 oz. Pressurized Spray Can				
	525-0306	—	Quart Can				
	525-0304	—	Gallon Can				

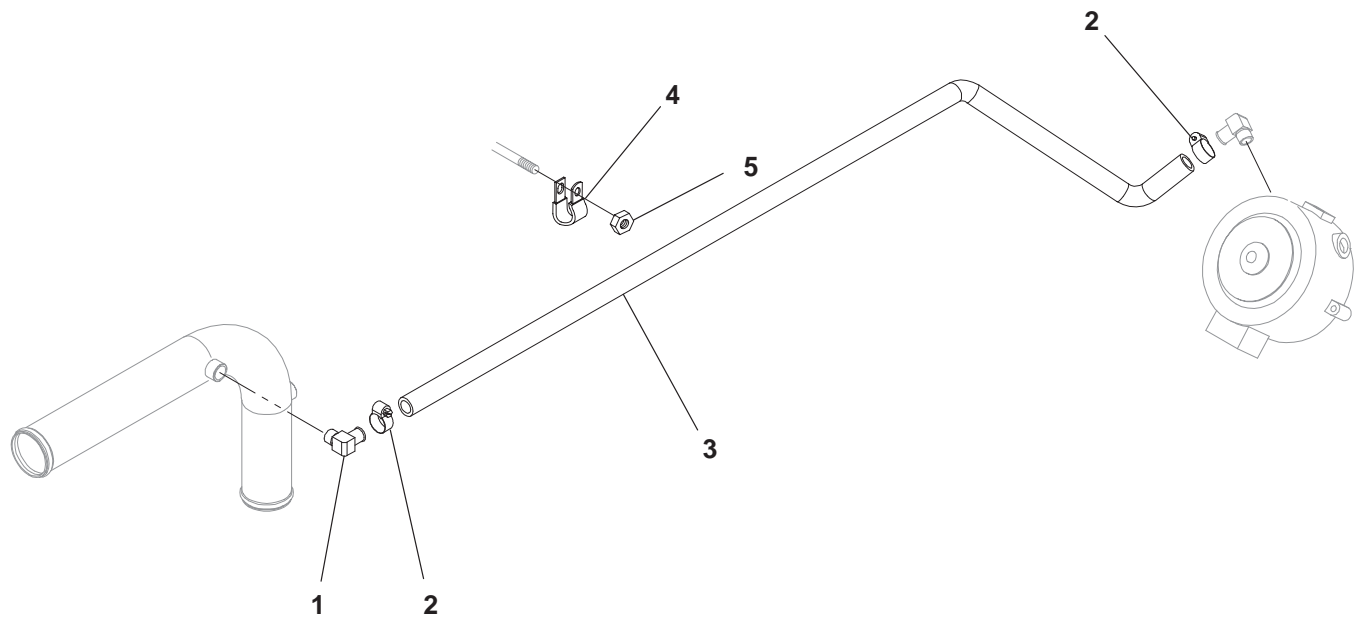
External Engine Parts



REF NO.	PART NO.	QTY USED	PART DESCRIPTION
1	856-0013	1	Washer, Lock – W/EIT (1/2)
2	800-2111	1	Screw, Cap – Hex Head (M12 x 1.25 x 25mm)
3	800-2058	1	Screw, Cap – Hex Head (M8 x 1.25 x 25)
4	850-2008	1	Washer, Lock (M8)
5	309-0269	1	Switch, Low Engine Temperature (S4)
6	193-0432	2	Sender, Temperature (E4, E2)
7	416-1000	1	Cable, Battery
8	416-0619	1	Cable, Battery
9	102-1448-02	1	Adapter, Oil Drain
10	526-2140	1	Washer, Flat (M12)

REF NO.	PART NO.	QTY USED	PART DESCRIPTION
11	102-1356	1	Gasket, Oil Drain
12	193-0444	1	Sender, Oil Pressure (E1)
13	505-0019	1	Bushing, Reducer (1/2 x 3/8)
14	505-0101	1	Nipple, Close (3/8) – GGKB, GGKC
15	505-0060	1	Tee, Pipe – GGKB, GGKC
16	502-0943	1	Connector, Hose (3/8 x 5/8) – GGKB, GGKC
17	309-0159	1	Switch, Pressure (S77)
18	332-3196	1	Clamp, J
19	526-2133	1	Washer, Flat
20	800-2084	1	Screw, Cap – Hex Head (M10 x 16)
21	332-2634	1	Clamp, Hose

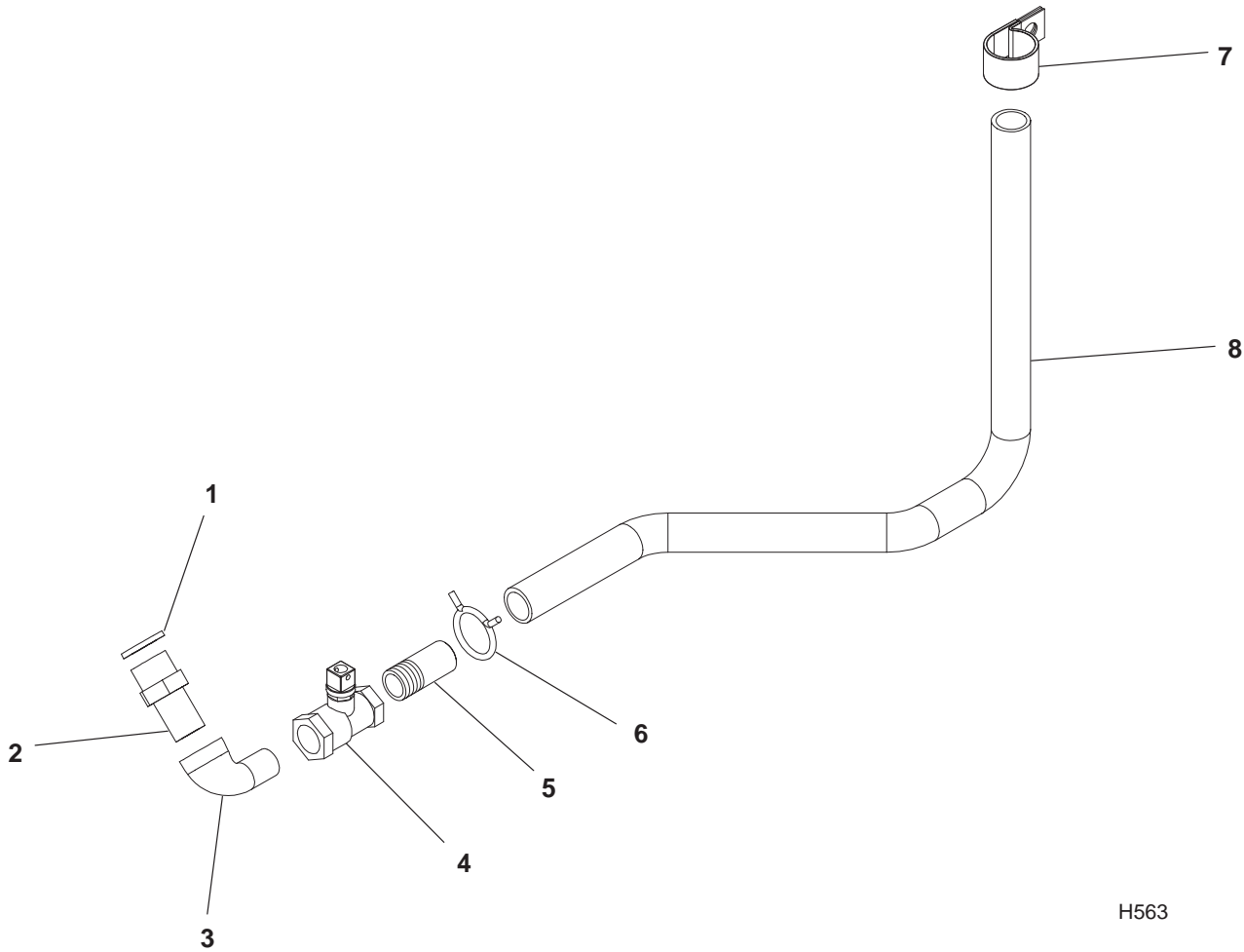
Vaporizer



C065,C090

REF NO.	PART NO.	QTY USED	PART DESCRIPTION	REF NO.	PART NO.	QTY USED	PART DESCRIPTION
1	502-0942	1	Elbow – 90°	4	518-0548-05	1	Clamp, Hose
2	503-0183	2	Clamp, Hose	5	862-0026-55	1	Nut, Hex (M8 x 1.25)
3	503-0386	–	Hose, Engine Coolant – Bulk (Order By The Foot – 4 Feet Required)				

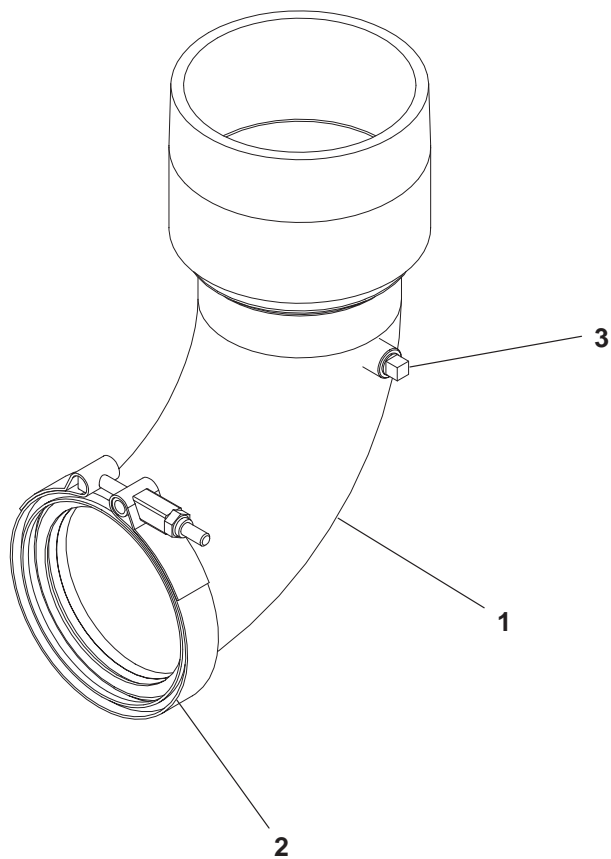
Oil Drain



H563

REF NO.	PART NO.	QTY USED	PART DESCRIPTION	REF NO.	PART NO.	QTY USED	PART DESCRIPTION
1	102-1147	1	Gasket, Oil Drain	6	503-0197	1	Clip, Hose
2	102-1237	1	Adapter, Oil Drain	7	518-0548-02	1	Clamp, Hose
3	505-0050	1	Elbow, Street (1/2" x 90°)	8	503-0098	-	Hose, Oil Drain – Bulk (Order By The Foot – 3 Feet Required)
4	504-0011	1	Valve, Shutoff (1/2")				
5	505-0185	1	Nipple, Half (1/2" x 1.5" lg)				

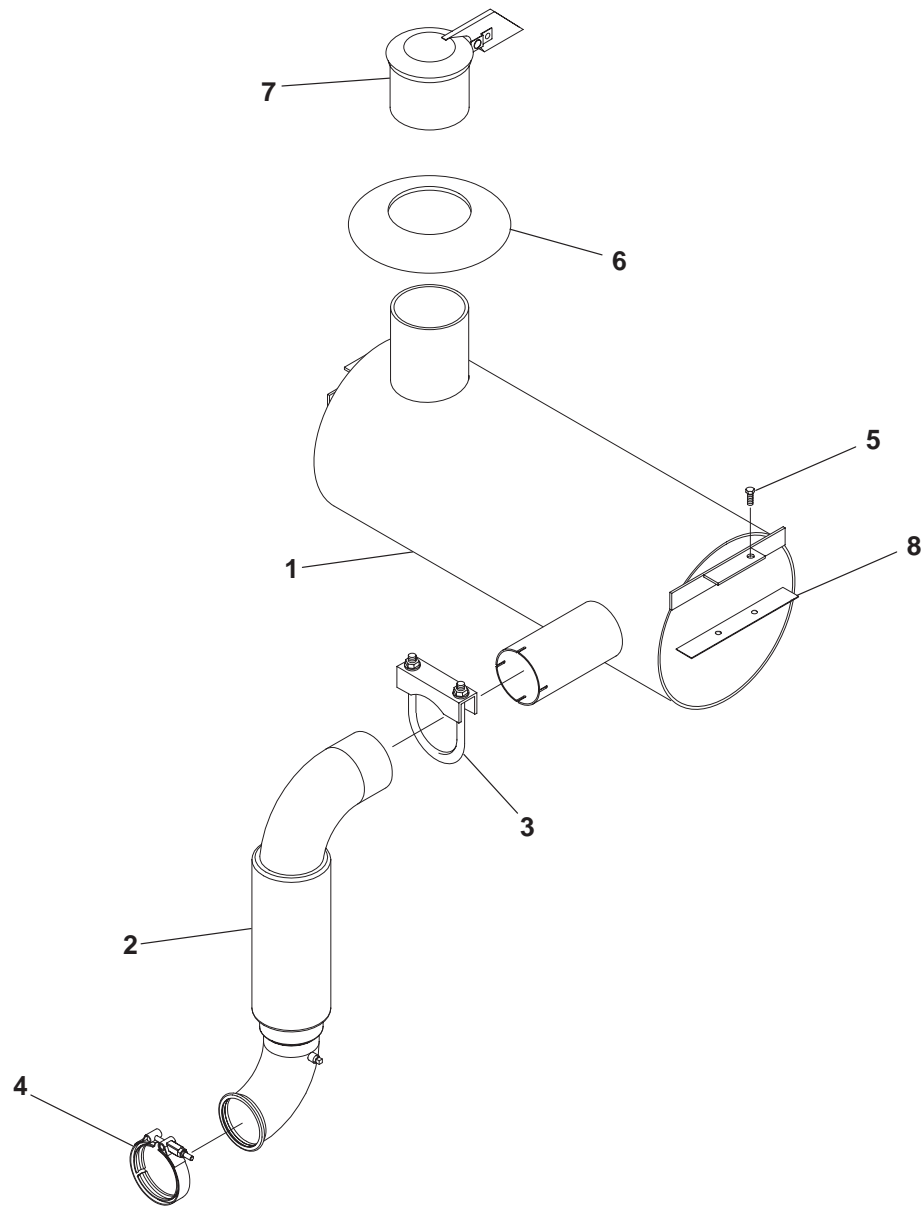
Exhaust Adapter



A299

REF NO.	PART NO.	QTY USED	PART DESCRIPTION	REF NO.	PART NO.	QTY USED	PART DESCRIPTION
1	155-3163-01	1	Adapter, Exhaust	3	505-0057	2	Plug, Square Head (1/8")
2	155-2570	1	Clamp, V-Band				

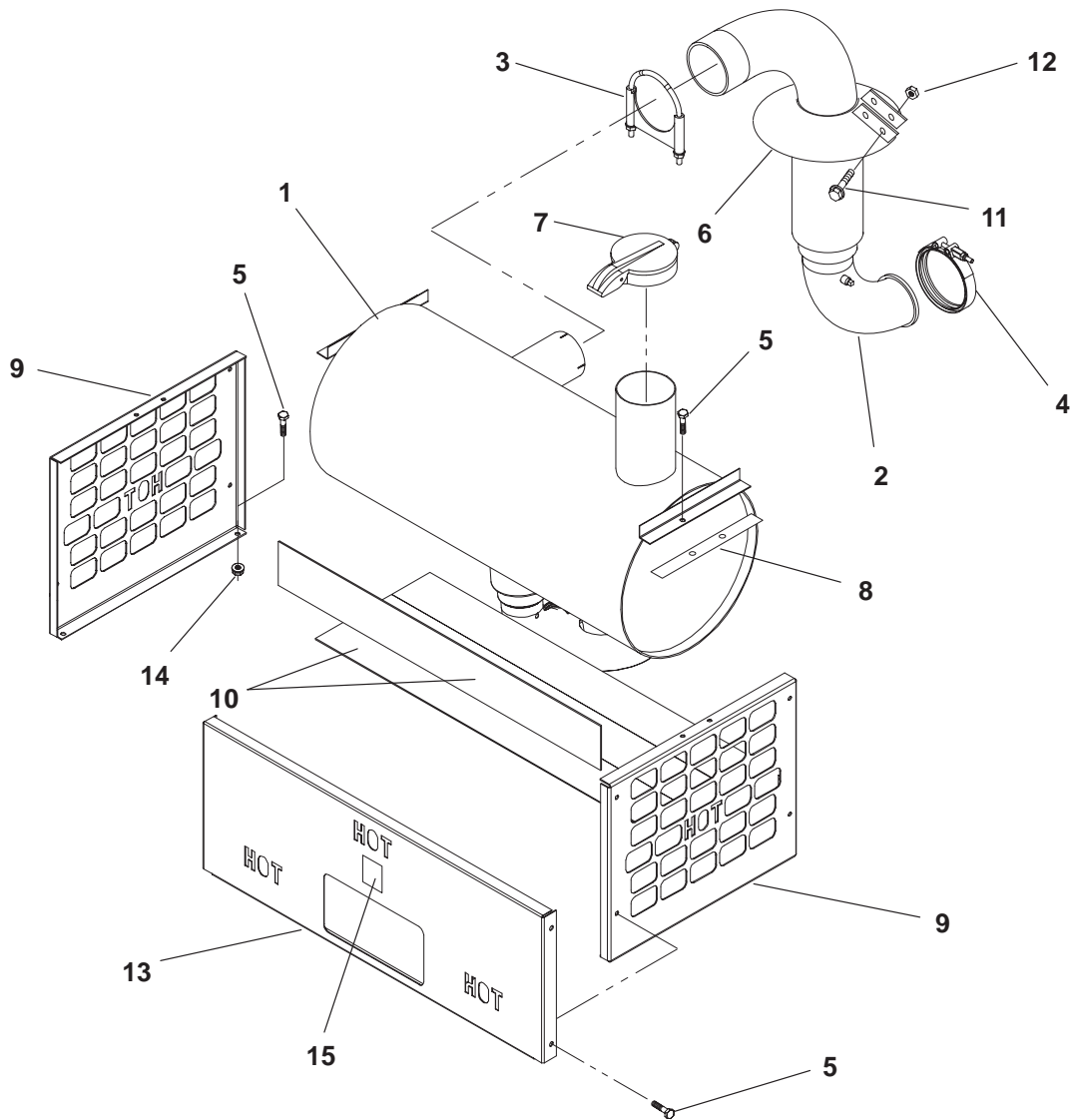
Muffler – Critical Housed Sets



F172,F173

REF NO.	PART NO.	QTY USED	PART DESCRIPTION	REF NO.	PART NO.	QTY USED	PART DESCRIPTION
1	155-3150-02	1	Muffler	6	155-3180	1	Shield, Rain
2	155-3164-03	1	Pipe, Exhaust	7	155-2062-13	1	Cap, Rain
3	155-2305	1	Clamp, Muffler	8	155-3219	2	Gasket, Muffler
4	155-2570	1	Clamp, V-Band				
5	821-6003-02	2	Screw, Cap – Hex Head (M8 x 1.25 x 25mm)				

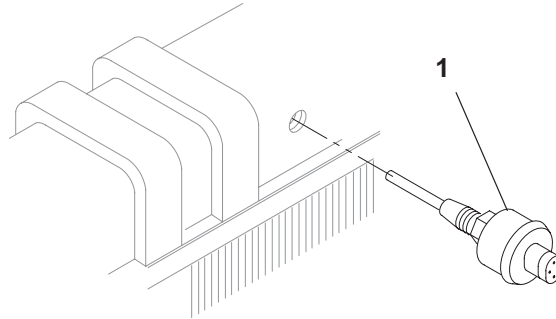
Muffler – Residential



A276

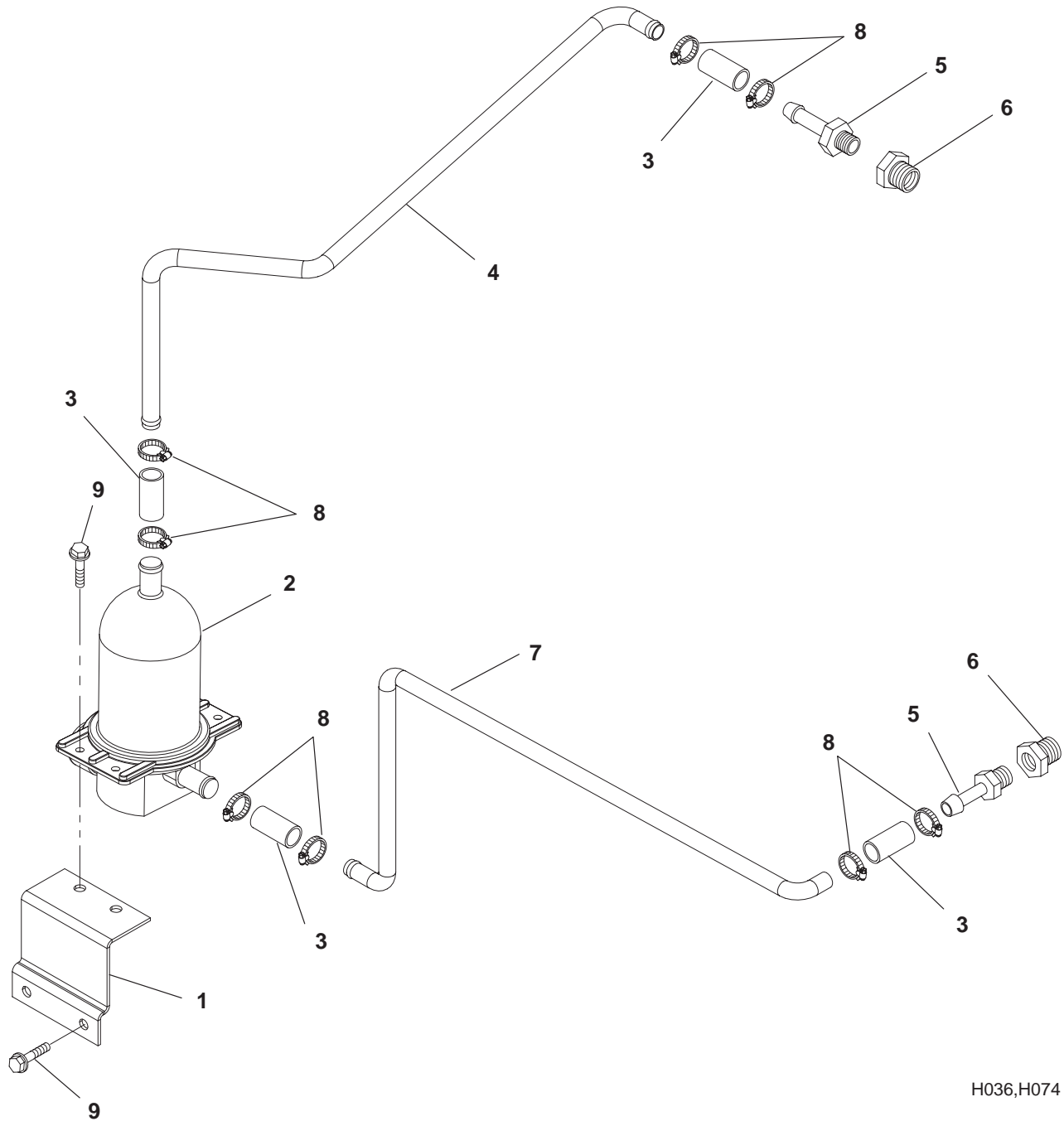
REF NO.	PART NO.	QTY USED	PART DESCRIPTION	REF NO.	PART NO.	QTY USED	PART DESCRIPTION
1	155-3150-03	1	Muffler	10	130-4848	—	Insulation, Exhaust – Bulk (Order By The Foot – 13 Feet Required)
2	155-3164-04	1	Pipe, Exhaust	11	821-5000-05	2	Screw, Hex Head (#10-32 x .50)
3	155-3260-01	1	Clamp, Muffler	12	870-0320	2	Nut, Whizlock (#10-32)
4	155-2570	1	Clamp, V-Band	13	405-6306-02	1	Bracket, Muffler
5	821-6003-02	8	Screw, Cap – Hex Head (M8 x 1.25 x 20mm)	14	870-2055	2	Nut, Locking – Hex Head (M8 x 1.25mm)
6	155-3278-03	1	Shield, Rain	15	098-7451	1	Label, Caution
7	155-2062-13	1	Cap, Rain				
8	155-3219	2	Gasket, Muffler				
9	405-6302-02	2	Bracket, Muffler				

Low Coolant Level Sender



REF NO.	PART NO.	QTY USED	PART DESCRIPTION	REF NO.	PART NO.	QTY USED	PART DESCRIPTION
1	193-0468	1	Sender, Low Coolant (E2)				

Coolant Heater

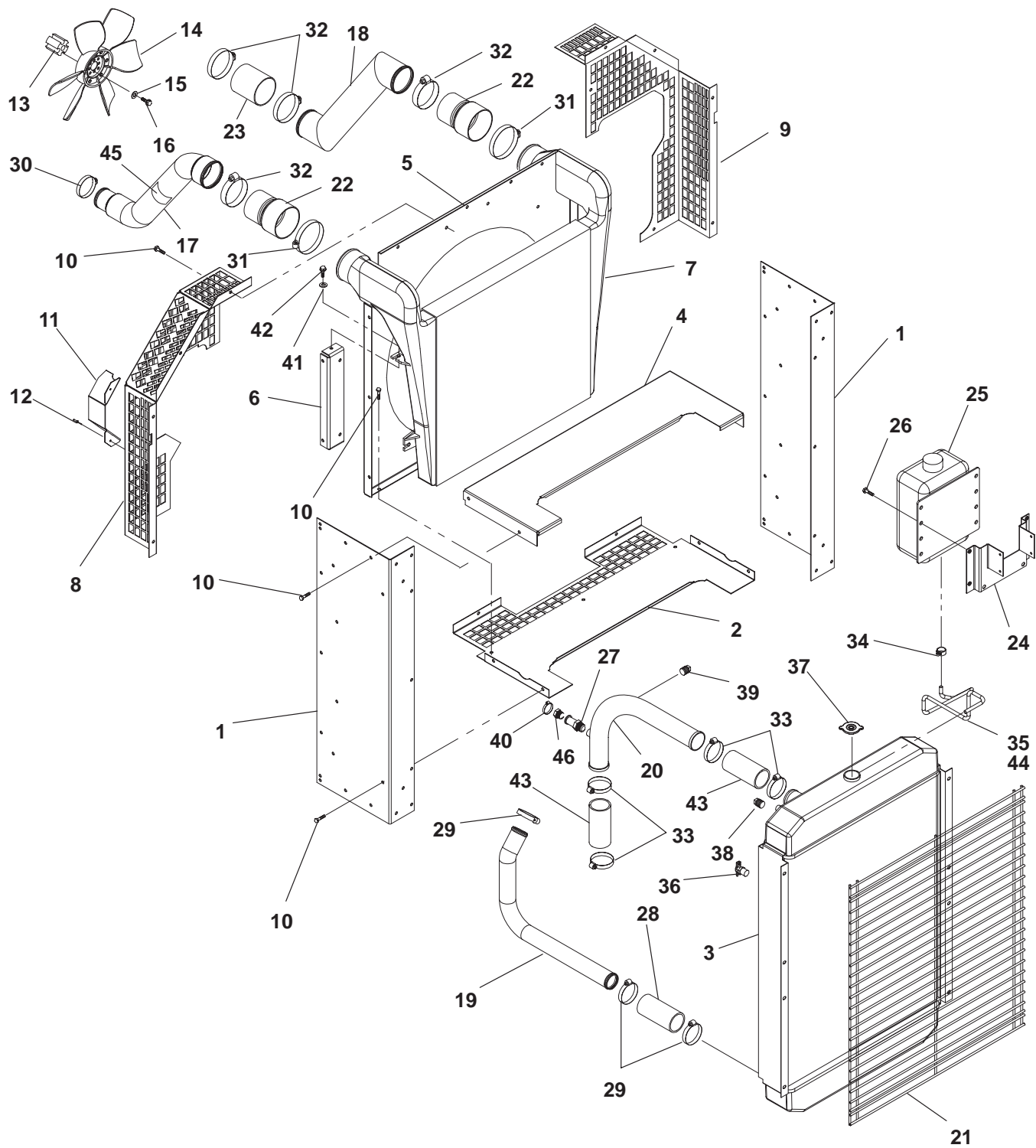


H036,H074

REF NO.	PART NO.	QTY USED	PART DESCRIPTION
1	333-0615	1	Bracket, Heater
2	333-0588-03	1	Heater, Engine Coolant 120 Volt
	333-0588-04	1	240 Volt
3	503-1634-02	4	Hose, Silicon Rubber (5/8 x 2.5)
4	130-4719	1	Tube, Water Heater
5	502-0943	2	Connector, Hose (3/8 NPT x 5/8 Hose)

REF NO.	PART NO.	QTY USED	PART DESCRIPTION
6	505-0019	2	Bushing, Reducer (3/8 x 1/2)
7	130-4720	1	Tube, Water Heater
8	503-0183	8	Clamp, Hose
9	821-6002-03	4	Screw, SEMS – Hex Head (M6 x 1.0 x 16mm)

Radiator

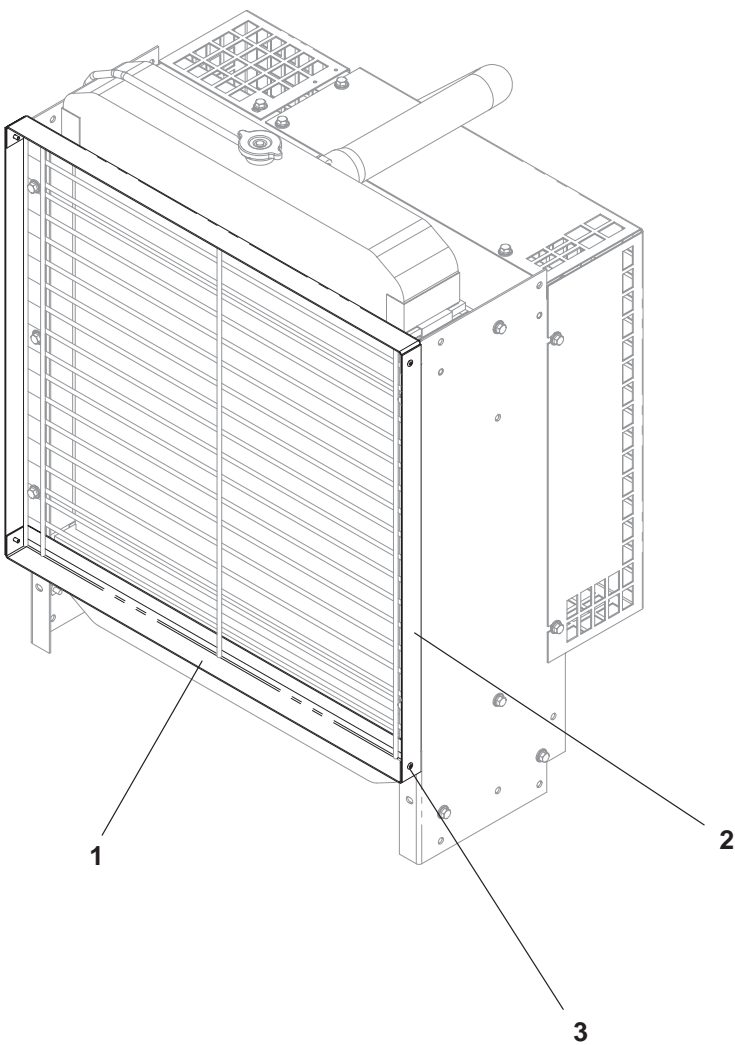


E082

Radiator

REF NO.	PART NO.	QTY USED	PART DESCRIPTION	REF NO.	PART NO.	QTY USED	PART DESCRIPTION
1	130-4694	2	Side, Housing	26	821-6002-03	4	Screw, Hex Head (M6 x 16)
2	130-4693	1	Cover, Shroud – Bottom	27	502-1162	1	Connector, Hose
3	130-4691-02	1	Radiator	28	503-1554	1	Hose, Radiator
4	130-4700	1	Cover, Shroud – Top	29	503-0365	3	Clamp, Hose
5	130-4692	1	Shroud, Charge Air Cooler	30	503-1872-04	1	Clamp, Hose
6	130-4699	2	Bracket, Charge Air Cooler	31	503-1872-07	2	Clamp, Hose
7	154-3021	1	Cooler, Charge Air	32	503-1872-06	4	Clamp, Hose
8	130-4697	1	Guard, Fan – Left	33	503-0465	4	Clamp, Hose
9	130-4695	1	Guard, Fan – Right	34	503-1445-06	1	Clamp, Hose
10	821-6003-02	48	Screw, Hex Head (M8 x 1.25 x 20mm)	35	898-1195-02	–	Sleeving, Convoluted – Bulk (Order By The Foot – 4 Feet Required)
11	130-4716	1	Guard, Alternator	36	504-0003	1	Cock, Drain
12	818-0231-02	2	Rivet, Pop	37	130-3721-01	1	Cap, Radiator (15 PSI)
13	130-3216-01	1	Spacer, Fan	38	502-0153	1	Plug, Square Head (1/4)
14	130-4733	1	Fan, Radiator	39	505-0110	1	Plug, Square Head (3/8)
15	526-2120	4	Washer, Flat	40	503-0685	1	Clamp, Hose
16	800-2099	4	Screw, Cap – Hex Head (M10 x 90)	41	526-0113	4	Washer, Flat (M8)
17	502-1310	1	Tube, Turbo Connector (3.5")	42	800-2059	4	Screw, Cap – Hex Head (M8 x 30)
18	502-1311	1	Tube, Charge Air Cooler	43	503-1379-01	2	Hose, Radiator
19	503-2045	1	Tube, Radiator Outlet	44	503-0276	–	Hose, Overflow – Bulk (Order By The Foot – 5 Feet Required)
20	503-2095	1	Tube, Radiator Inlet	45	098-7451	1	Label, Caution
21	130-4735	1	Grille (Unhoused Sets)	46	502-0050	1	Bushing, Pipe
22	502-1292	2	Connector, Turbo Tube				
23	502-1313	1	Connector, Turbo Tube				
24	130-4750	1	Bracket, Bottle				
25	130-3984	1	Tank, Coolant Recovery				

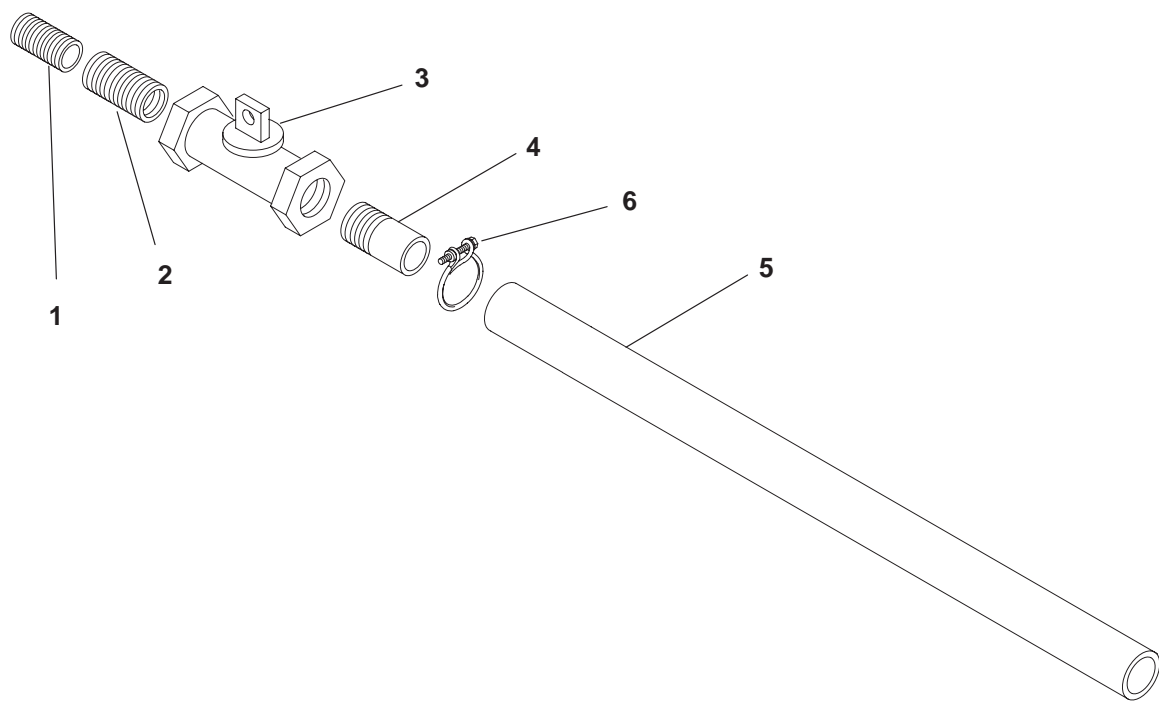
Duct Adapter



F013

REF NO.	PART NO.	QTY USED	PART DESCRIPTION	REF NO.	PART NO.	QTY USED	PART DESCRIPTION
1	130-4622	2	Adapter, Duct	3	818-0231-02	4	Rivet, Pop
2	130-4734	2	Adapter, Duct – Side				

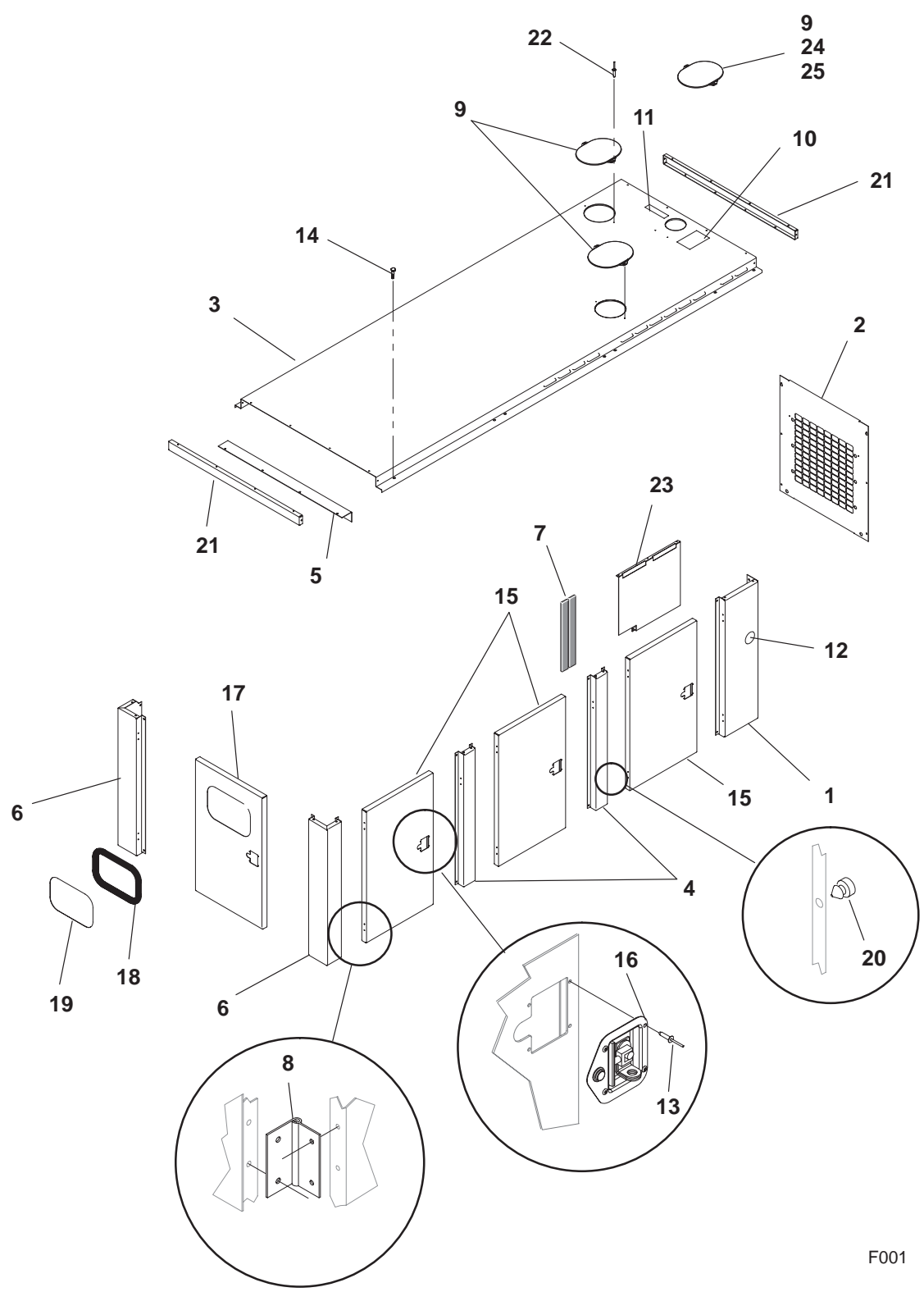
Radiator Drain



E089

REF NO.	PART NO.	QTY USED	PART DESCRIPTION	REF NO.	PART NO.	QTY USED	PART DESCRIPTION
1	502-0047	1	Nipple, Pipe (1/4)	4	505-0185	1	Nipple, Half
2	502-0802	1	Bushing, Flush (1/4 x 1/2)	5	503-1195	1	Hose (24")
3	504-0011	1	Valve, Shutoff (1/2)	6	503-0197	1	Clamp, Hose

Housing
Standard Weather Protective

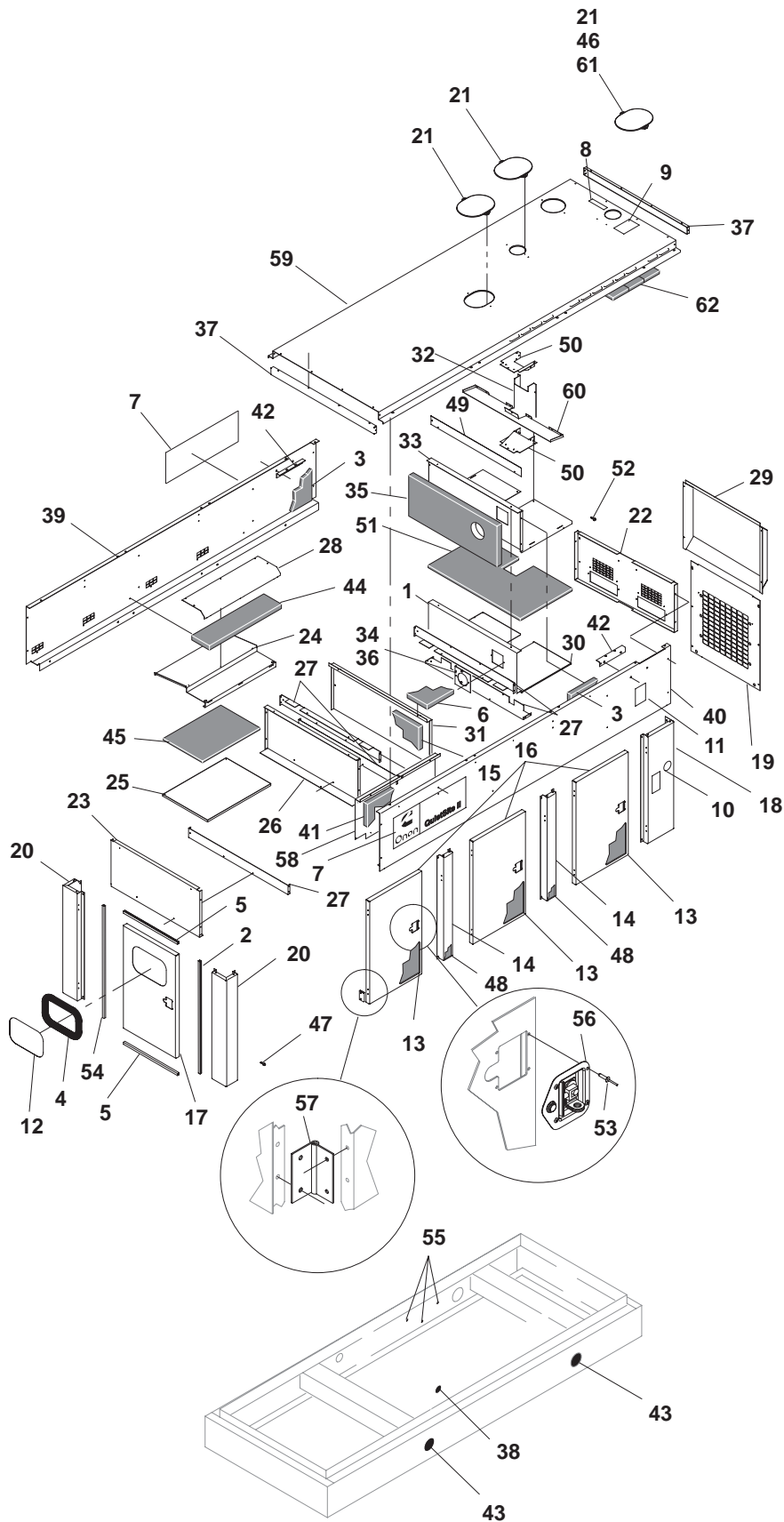


F001

Housing Standard Weather Protective

REF NO.	PART NO.	QTY USED	PART DESCRIPTION	REF NO.	PART NO.	QTY USED	PART DESCRIPTION
1	405-5908	2	Panel, Side – Radiator Housing	16	406-0835	7	Latch, Door
2	405-5909	1	Panel, Front – Radiator Housing		406-0782	1	Key, Replacement (fits Latch 406-0835)
3	405-6303-02	1	Roof	17			Door, Housing
4	405-5744	4	Post, Housing – Center		405-5903	1	Sets With Control Window
5	405-5915	1	Angle, Roof		405-5902	1	Sets W/O Control Window
6	405-5916	2	Post, Corner – Housing	18	895-0363	–	Weatherstrip – Window – Bulk (Order By The Foot – 5 Feet Required)
7	130-4848	–	Insulation, Exhaust – Bulk (Order By The Foot – 3 Feet Required)	19	319-2653	1	Window, Control (If Equipped)
8	406-0831	14	Hinge, Door	20	895-0382	14	Bumper, Door
9	155-3238	3	Cover, Exhaust	21	405-5917	2	Panel, End – Roof
10	098-4730	1	Label, Warning	22	818-0237-01	6	Rivet, Pop (1/8)
11	098-5429	1	Label, Coolant Fill	23	405-6301-02	1	Shield, Heat
12	098-4500	2	Label, Prototype Tested	24	870-0504	2	Nut, Captive Floating (M6 x 1.0)
13	818-0231-02	113	Rivet, Pop (3/16)	25	821-6002-03	2	Screw, Hex Head (M6 x 16)
14	821-6003-02	36	Screw, Hex Head – SEMS (M8)				
15	405-5832	6	Door, Housing				

Housing Quiet Site First Stage



F172

Housing Quiet Site First Stage

REF NO.	PART NO.	QTY USED	PART DESCRIPTION	REF NO.	PART NO.	QTY USED	PART DESCRIPTION
1	405-6034	1	Retainer, Insulation	32	405-5963	1	Fill Neck – Radiator
2	895-0385	7	Weather Seal – Side	33	405-5966	1	Box, Muffler
3	128-0252	2	Insulation, Foam	34	405-5986	1	Cover, Exhaust Inlet
4	895-0363	–	Weather Strip – Window – Bulk (Order By The Foot – 5 Feet Required)	35	405-6109	1	Fiberglass
5	895-0384	14	Weather Seal – Top & Bottom	36	526-0011	2	Washer, Flat
6	405-6001-01	2	Fiberglass	37	405-5917	2	Panel, End – Roof
7	098-7470	2	Label, Model	38	517-0138-07	2	Plug
8	098-5429	1	Label, Coolant Fill	39	405-5950	1	Extension, Side – RH
9	098-4730	1	Label, Caution	40	405-5951	1	Extension, Side – LH
10	098-4500	2	Label, Prototype Tested	41	405-5997	2	Fiberglass
11	098-7451	2	Label, Caution	42	405-5998	2	Support, Muffler
12	319-2653	1	Window, Control	43	517-0322	4	Plug
13	405-5734	6	Insulation, Door	44	405-6000-02	2	Fiberglass
14	405-5744	4	Post, Housing – Center	45	405-6000-03	2	Fiberglass
15	405-5841	3	Fiberglass	46	821-6002-03	2	Screw, Hex Head (M6 x 16)
16			Door, Housing	47	821-6003-02	54	Screw, Hex Head (M8 x 20)
	405-5902	6	Sets W/Control Window	48	405-6001-02	4	Fiberglass
	405-5902	7	Sets WO/Control Window	49	405-6002	1	Barrier, Air Flow
17	405-5903	1	Door W/Window Cutout	50	405-6003	2	Box, Radiator Fill
18	405-5908	2	Panel, Side – Radiator Housing	51	405-6005	1	Fiberglass
19	405-5909	1	Panel, Front – Radiator Housing	52	818-0237-01	39	Rivet (1/8)
20	405-5916	2	Post, Corner – Housing	53	818-0231-02	164	Rivet (3/16)
21	155-3238	3	Cover, Exhaust	54	895-0386	7	Weather Seal
22	405-5952	1	Extension, Front	55	517-0131	3	Plug
23	405-5953	1	Extension, Rear	56	406-0835	7	Latch, Door
24	405-5954	2	Baffle, Air		406-0782	1	Key, Replacement (fits Latch 406-0835)
25	405-5955	2	Retainer, Insulation	57	406-0831	14	Hinge, Door
26	405-5956	1	Duct, Support	58	405-6015	2	Retainer, Insulation
27	405-5957	5	Angle, Support	59	405-5926	1	Roof
28	405-5958	2	Retainer, Insulation	60	405-5959	1	Baffle, Recirculation – Muffler
29	405-5962	1	Baffle, Air – Discharge	61	870-0504	2	Nut, Captive Floating (M6 x 1.0)
30	405-5960	1	Retainer, Insulation	62	130-4848	–	Insulation, Exhaust – Bulk (Order By The Foot – 10 Feet Required)
31	405-5961	3	Retainer, Insulation				

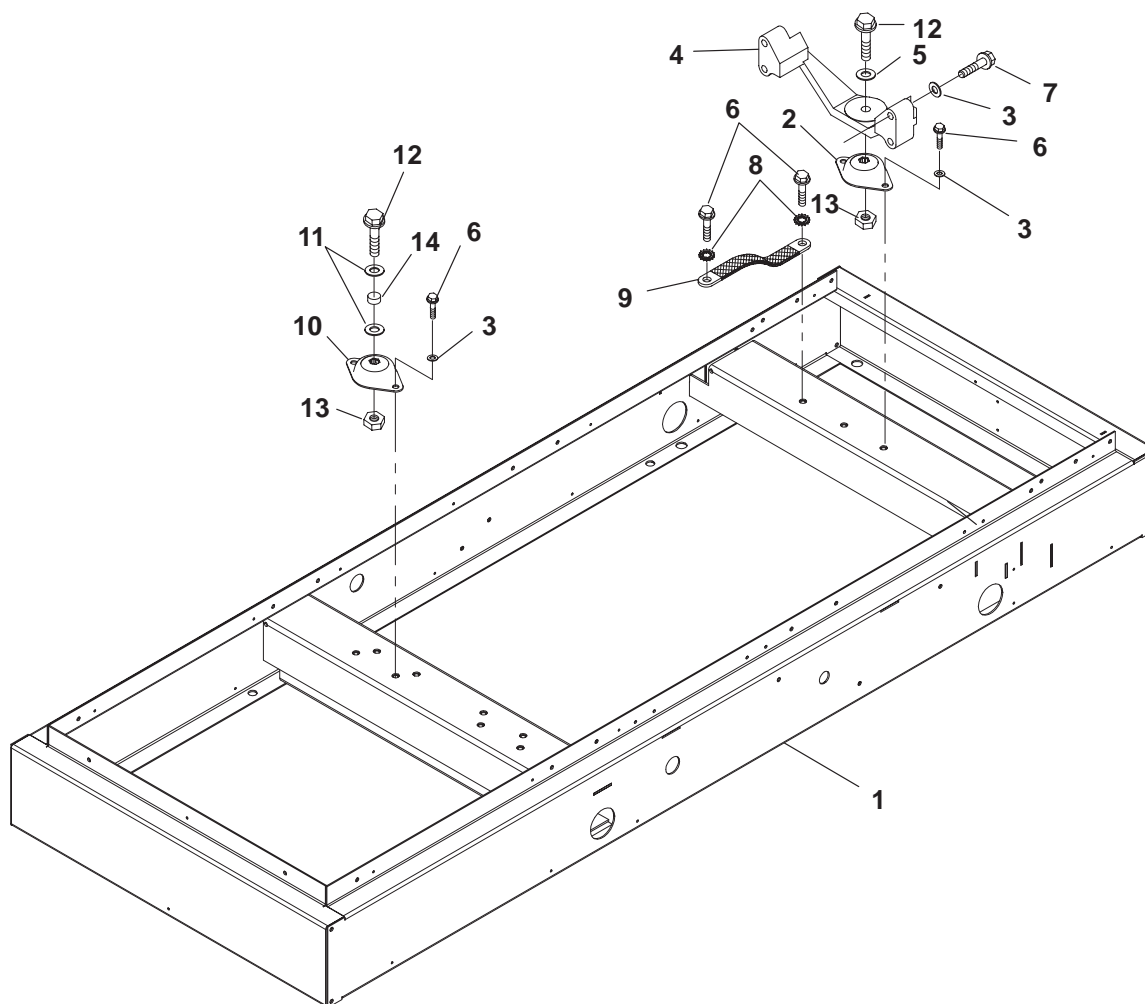
Housing Quiet Site Second Stage



Housing Quiet Site Second Stage

REF NO.	PART NO.	QTY USED	PART DESCRIPTION	REF NO.	PART NO.	QTY USED	PART DESCRIPTION
1	405-6044	4	Retainer, Insulation	40	405-5951	1	Extension, Side – LH
2	895-0385	7	Weather Seal – Side	41	405-5997	2	Fiberglass
3	128-0252	2	Insulation, Foam	42	405-5998	2	Support, Muffler
4	895-0363	–	Weather Strip – Window – Bulk (Order By The Foot – 5 Feet Required)	43	405-6000-01	2	Fiberglass
5	895-0384	14	Weather Seal – Top & Bottom	44	405-6000-02	2	Fiberglass
6	405-6001-01	2	Fiberglass	45	405-6000-03	2	Fiberglass
7	098-7470	2	Label, Model	46	405-6000-04	4	Fiberglass
8	098-5429	1	Label, Coolant Fill	47	405-6000-07	1	Fiberglass
9	098-4730	1	Label, Caution	48	405-6001-02	4	Fiberglass
10	098-4500	2	Label, Prototype Tested	49	405-6002	1	Barrier, Air Flow
11	098-7451	2	Label, Caution	50	405-6003	2	Box, Radiator Fill
12	319-2653	1	Window, Control	51	405-6005	1	Fiberglass
13	405-5734	6	Insulation, Door	52	405-5989	1	Cover, Discharge
14	405-5744	4	Post, Housing – Center	53	405-6010	1	Cover, Discharge
15	405-5841	3	Fiberglass	54	895-0386	7	Weather Seal
16			Door, Housing	55	517-0131	3	Plug
	405-5902	6	Sets W/Control Window	56	405-6013	1	Retainer, Insulation
	405-5902	7	Sets WO/Control Window	57	405-6014	4	Retainer, Insulation
17	405-5903	1	Door W/Window Cutout	58	405-6015	2	Retainer, Insulation
18	405-5908	2	Panel, Side – Radiator Housing	59	405-5926	1	Roof
19	405-5909	1	Panel, Front – Radiator Housing	60	405-5959	1	Baffle, Recirculation – Muffler
20	405-5916	2	Post, Corner – Housing	61	870-0504	2	Nut, Captive Floating (M6 x 1.0)
21	155-3238	3	Cover, Exhaust	62	406-0831	14	Hinge, Door
22	405-5952	1	Extension, Front	63	406-0835	7	Latch, Door
23	405-5953	1	Extension, Rear		406-0782	1	Key, Replacement (fits Latch 406-0835)
24	405-5954	2	Baffle, Air	64	818-0231-02	162	Rivet (3/16)
25	405-5955	2	Retainer, Insulation	65	818-0237-01	105	Rivet (1/8)
26	405-5956	1	Duct, Support	66	821-6003-02	94	Screw, Hex Head (M8 x 20)
27	405-5957	5	Angle, Support	67	821-6002-03	2	Screw, Hex Head (M6 x 16)
28	405-5958	2	Retainer, Insulation	68	517-0322	4	Plug
29	405-5962	1	Baffle, Air – Discharge	69	517-0138-07	2	Plug
30	405-5960	1	Retainer, Insulation	70	130-4848	–	Insulation, Exhaust – Bulk (Order By The Foot – 10 Feet Required)
31	405-5961	3	Retainer, Insulation	71	405-5994	2	Retainer, Insulation
32	405-5963	1	Fill Neck – Radiator	72	405-5992	1	Panel, Center
33	405-5966	1	Box, Muffler	73	405-5993	1	Cover, Duct
34	405-5986	1	Cover, Exhaust Inlet	74	405-5917	2	Panel, End – Roof
35	405-5988	2	Bottom, Discharge	75	526-0011	2	Washer, Flat
36	405-5990	1	Cover, Air Discharge	76	405-6109	1	Fiberglass
37	405-5991-01	2	Side, Discharge – RH	77	405-6034	1	Retainer, Insulation
38	405-5991-02	2	Side, Discharge – LH	78	406-6132	1	Retainer, Insulation
39	405-5950	1	Extension, Side – RH				

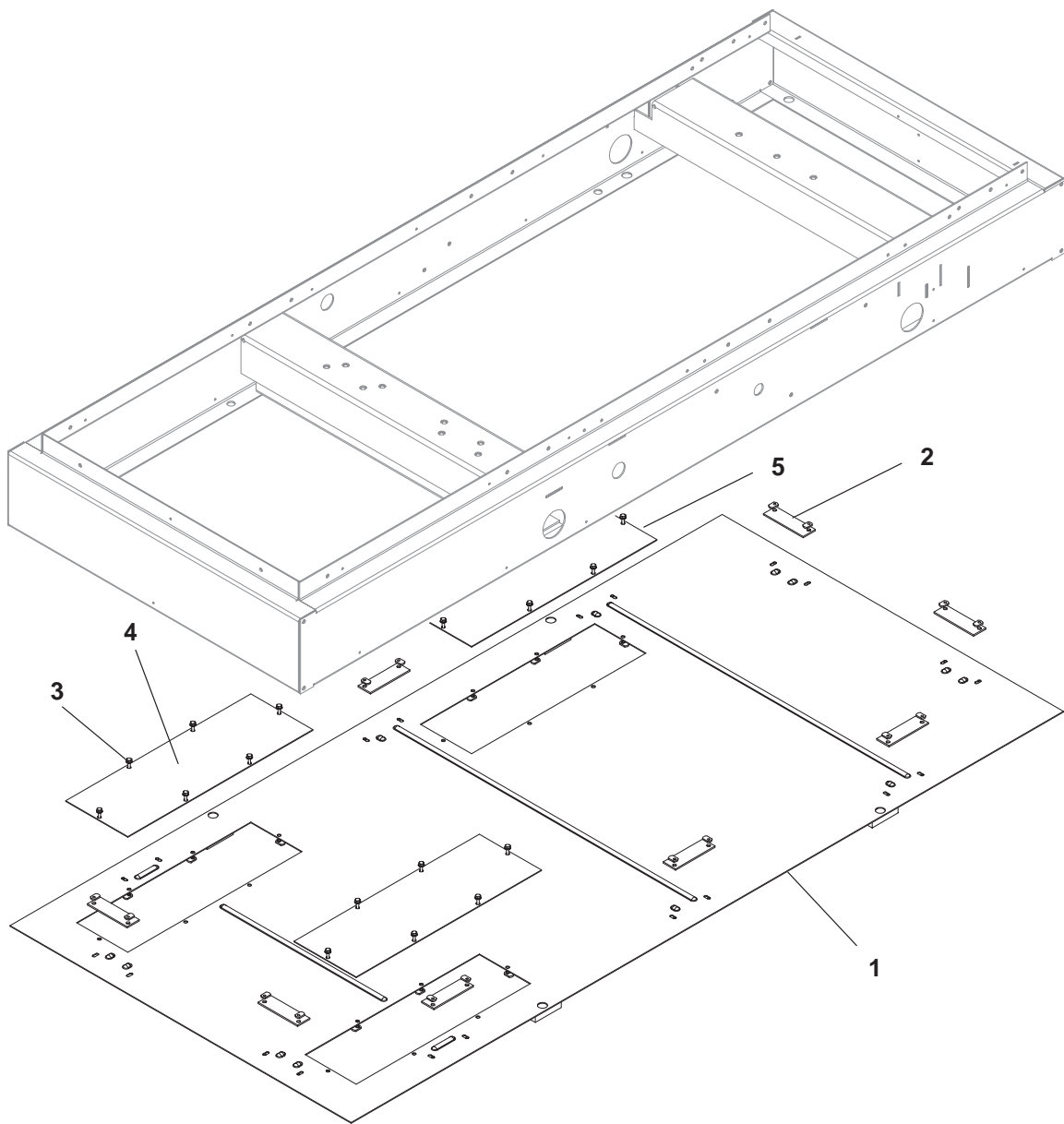
Skid



F177,F179

REF NO.	PART NO.	QTY USED	PART DESCRIPTION	REF NO.	PART NO.	QTY USED	PART DESCRIPTION
1			Skid	8	856-0013	2	Washer, Lock – EIT (1/2)
	403-4188-01	1	Basic	9	337-0090	1	Strap, Electrical
	403-4154-01	1	Housing Compatible	10	402-0371	2	Cushion, Vibration Isolating
2	402-0644	1	Cushion, Vibration Isolating	11	526-0238-01	4	Washer, Flat (3/4)
3	526-0433	10	Washer, Hardend (M12)	12	800-0607	3	Screw, Cap – Hex Head (3/4-10 x 2.00) (Grade 8)
4	403-4218	1	Support, Engine	13	862-0044	3	Nut, Hex (3/4-10)
5	526-0443	1	Washer, Hardend (3/4)	14	517-0094	2	Plug, Plastic
6	800-2543-02	8	Screw, Cap – Hex Head (M12 x 25)				
7	800-2124	4	Screw, Cap – Hex Head (M12 x 90)				

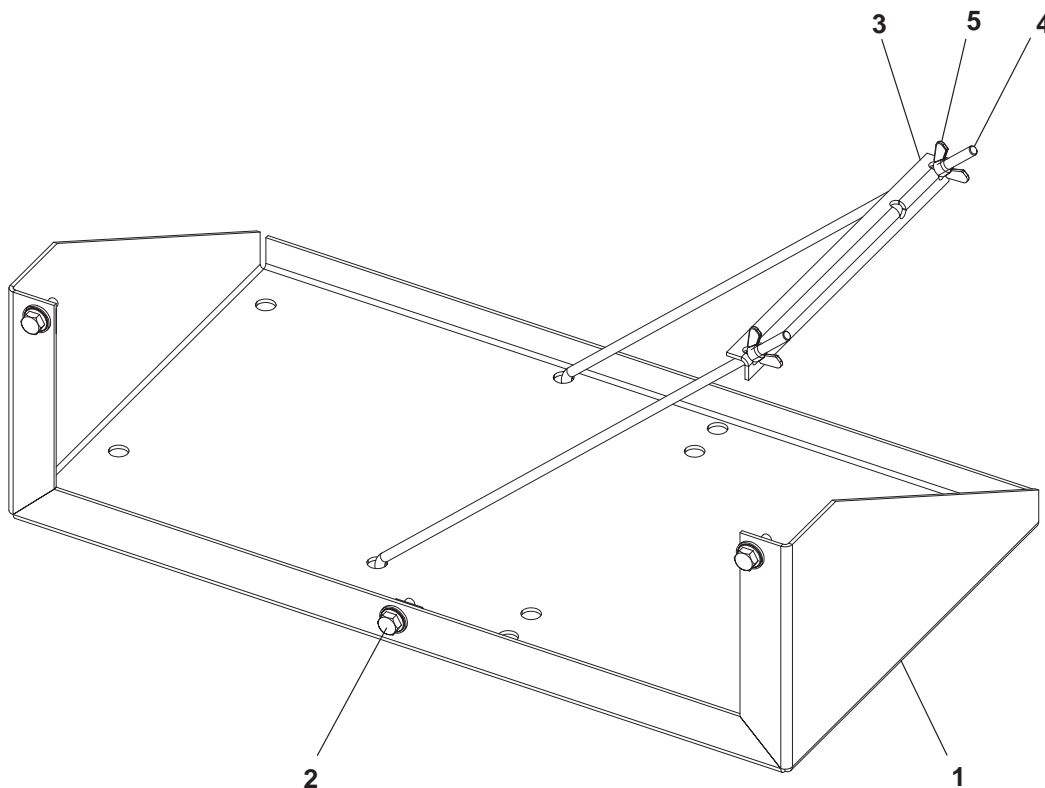
Skid Pan



F170

REF NO.	PART NO.	QTY USED	PART DESCRIPTION	REF NO.	PART NO.	QTY USED	PART DESCRIPTION
1	403-4183	1	Pan, Skid	4	403-4215	2	Cover, Stub up
2	403-4110	12	Clamp	5	403-4116	1	Cover, Stub up
3	821-6002-03	42	Screw, SEMS – Hex Head (M6 x 1 x 16)				

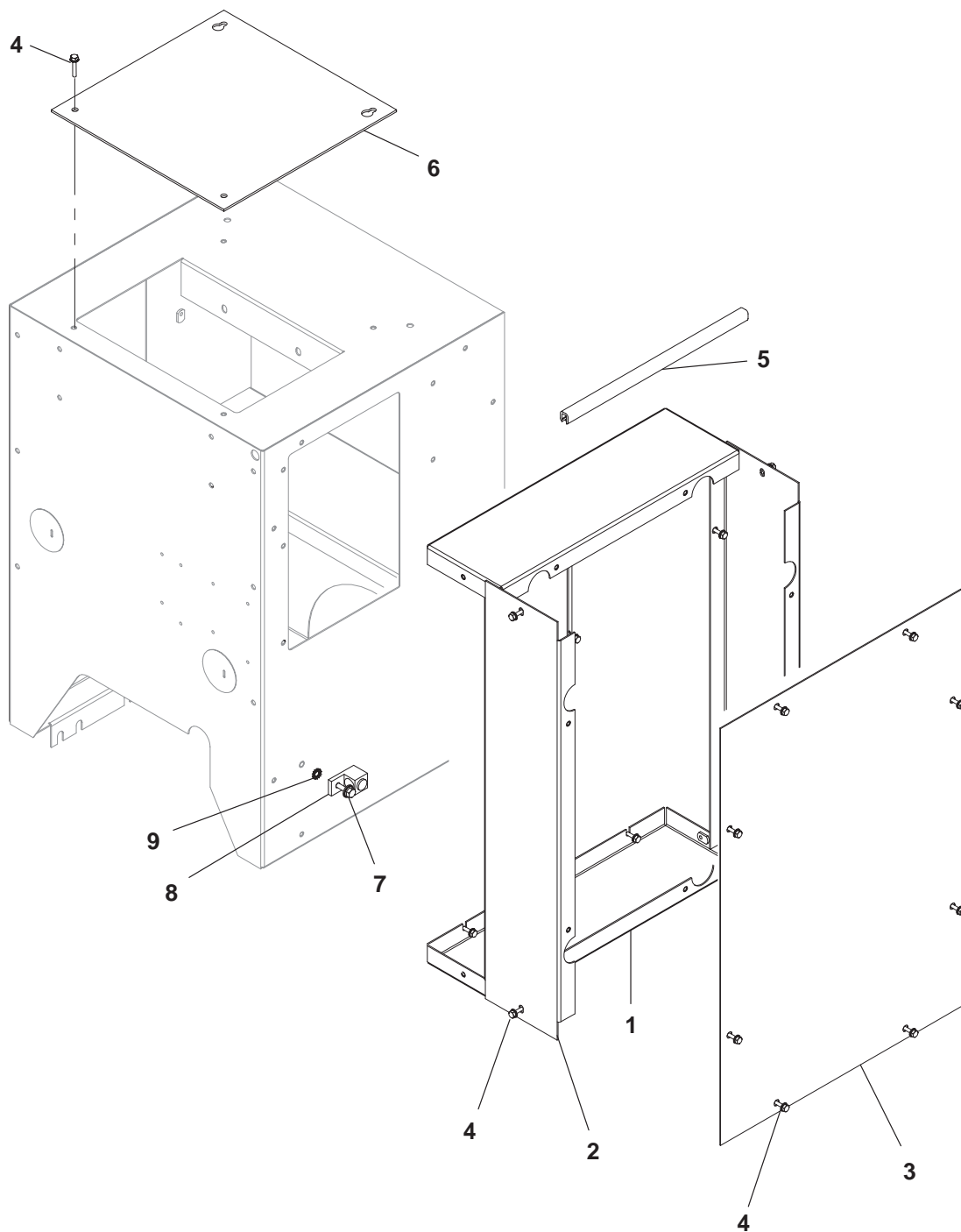
Battery Tray



F065

REF NO.	PART NO.	QTY USED	PART DESCRIPTION	REF NO.	PART NO.	QTY USED	PART DESCRIPTION
1	403-4058	1	Tray, Battery	4	416-0993-02	2	Rod, Hold Down – Battery
2	821-6003-02	3	Screw, Hex Head (M8 x 20)	5	865-0030	2	Nut, Wing
3	416-1033	1	Hold Down, Battery				

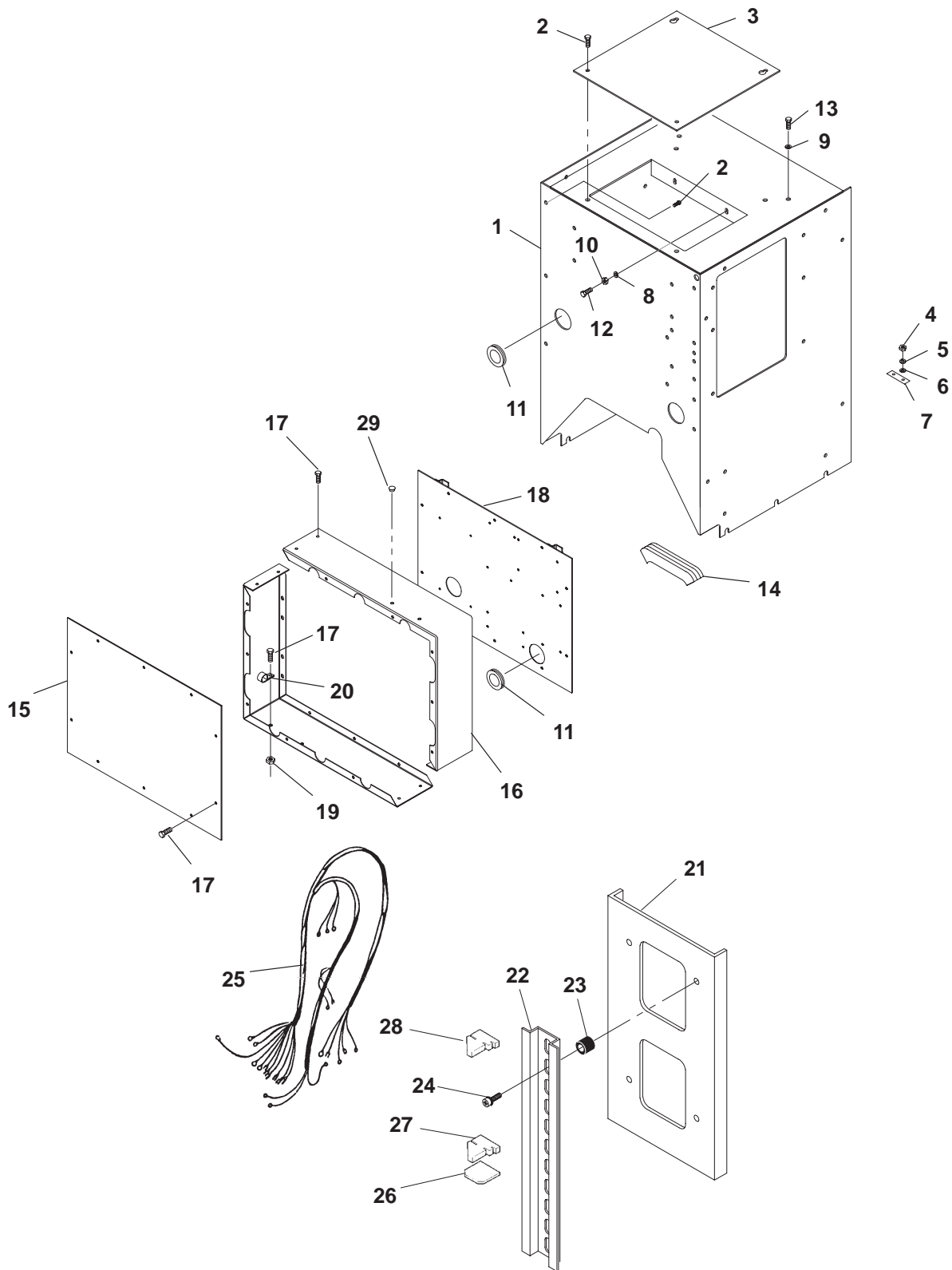
Entrance Box



K882

REF NO.	PART NO.	QTY USED	PART DESCRIPTION	REF NO.	PART NO.	QTY USED	PART DESCRIPTION
1	319-3072	2	Panel, End – CB Box	6	319-2996	1	Cover, Control Housing
2	319-2978	2	Panel, Side – CB Box	7	821-6003-02	1	Screw, Hex Head (M8 x 20)
3	319-2979-02	1	Cover, CB Box	8	332-1473	1	Lug, Solderless
4	821-6002-03	24	Screw, Hex Head (M6 x 16)	9	856-0008	1	Washer, Lock – EIT (5/16)
5	508-0239	–	Edging – Bulk (Order By The Foot – 2 Feet Required)				

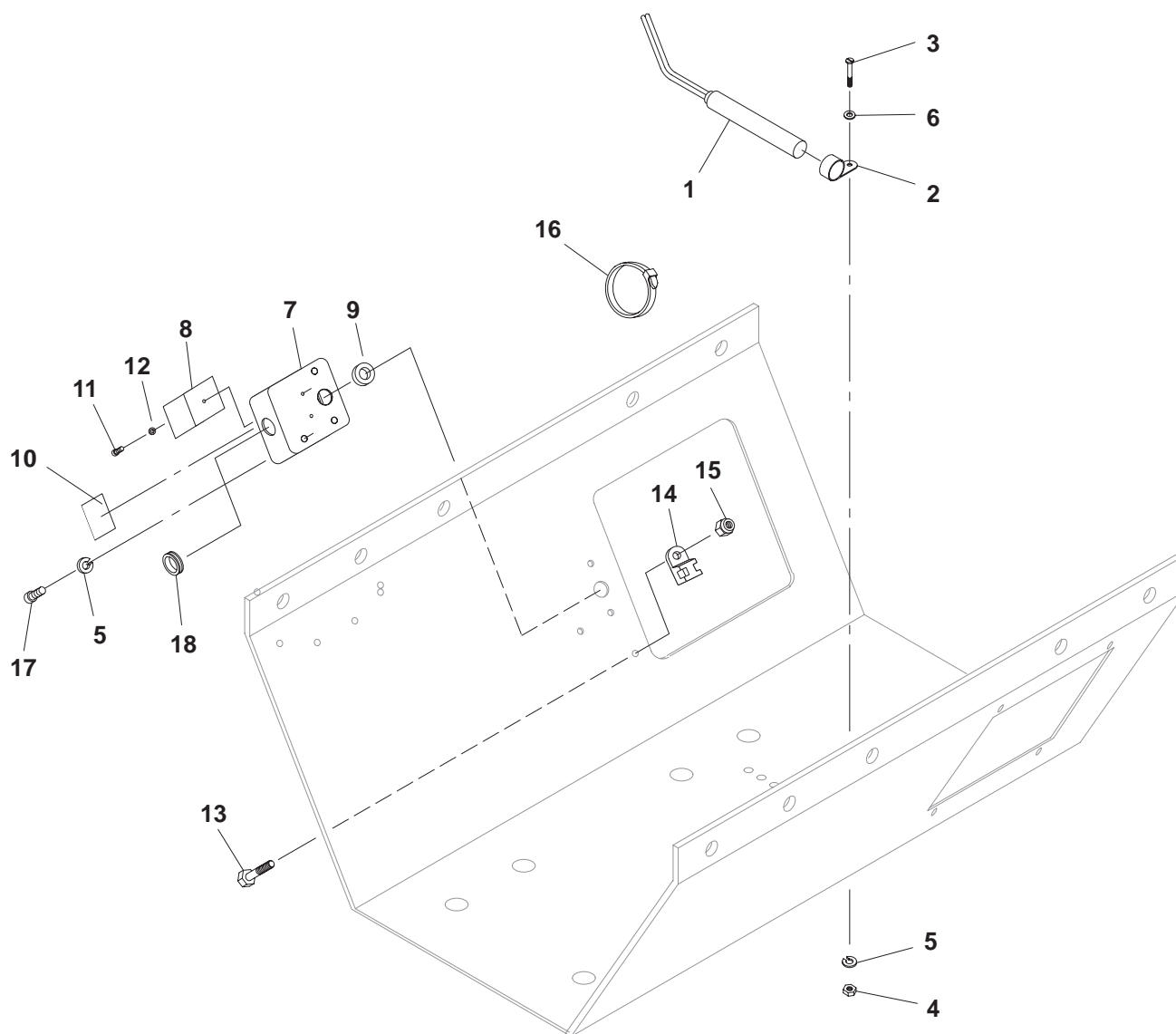
Control Housing



Control Housing

REF NO.	PART NO.	QTY USED	PART DESCRIPTION	REF NO.	PART NO.	QTY USED	PART DESCRIPTION
1	319-2967	1	Housing, Control	17	821-6002-03	24	Screw, Hex Head (M6 x 16)
2	821-6002-03	10	Screw, SEMS (M6 x 1 x 16)	18	319-3148	1	Panel, Assembly – PCC Box
3	319-2996	1	Cover, Housing – Control	19	870-2055	2	Nut, Hex – Flange (M8 x 1.25)
4	860-2009	8	Nut, HMS (M10 x 1-1/2")	20	332-2634	2	Clamp
5	850-2010	8	Washer, Lock (M10)	21	319-2247	1	Mount, Rail – Control Box
6	526-2120	8	Washer, Flat (M10)	22	332-2879-05	2	Rail, Terminal
7	332-2987	4	Link, Terminal	23	402-0510	4	Isolator, Vibration
8	856-0008	2	Washer, Lock – ET (5/16")	24	815-0839	4	Screw, Pan Head – Cross Recessed – W/ET (10-32 x 3/8")
9	526-0013	2	Washer, Flat (5/16")				
10	870-2055	2	Nut, Whizlock (M8)	25			Harness, Interconnect
11	508-1119	4	Grommet		338-3525	1	Single Paralleling
12	821-6003-02	2	Screw, SEMS (M8 x 1.25 x 20)		338-3709	1	Paralleling
13	821-5003-01	4	Screw, SEMS (5/16-18 x 1/2")	26	332-2878	2	Bracket, End – Terminal
14	508-0305-02	–	Edging – Bulk (Order by the Foot – 1 Foot Required)	27	332-3126-01	1	Plate, End – Terminal
15	319-2220	1	Cover, Box – Control	28	332-3126-02	1	Plate, End – Terminal (Paralleling)
16	319-3278	2	Wrapper, Box – Control	29	517-0131	2	Plug, Hole

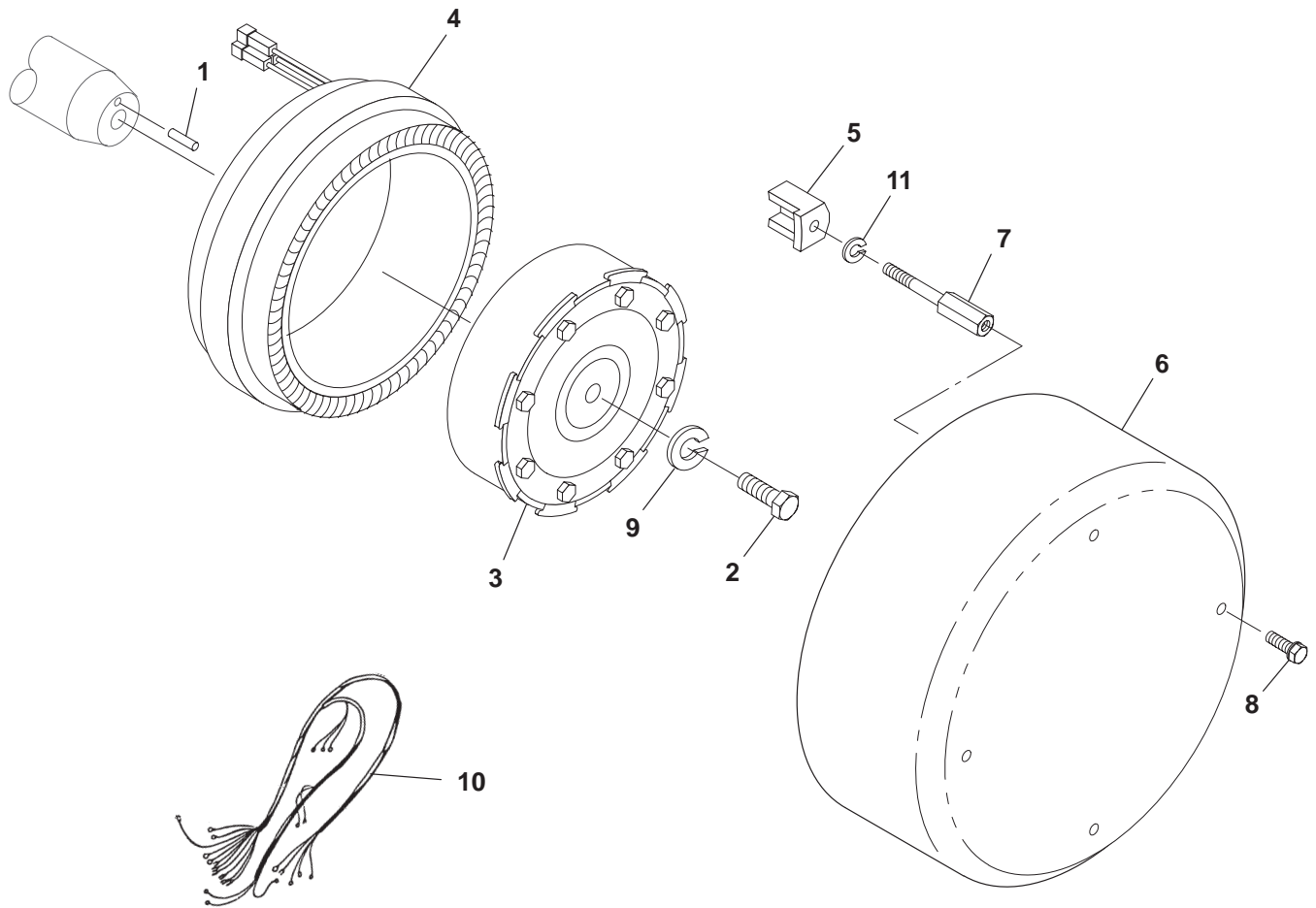
Generator Heater



A292,A293

REF NO.	PART NO.	QTY USED	PART DESCRIPTION	REF NO.	PART NO.	QTY USED	PART DESCRIPTION
1	333-0438-07	1	Cartridge, Heater	10	098-7281	1	Label, Warning – Heater
	333-0438-08	1	110–125 Volt	11	822-3047	1	Screw, Pan Head (M3 x 20)
2	332-3024-11	2	220–260 Volt	12	850-2003	1	Washer, Lock (M3)
3	822-3075	6	Clamp, Loop	13	800-3034	1	Screw, Cap – Hex Head (M4 x .7 x 12)
4	860-2005	2	Screw, Pan Head (M4 x 16)	14	332-3228	1	Mount, Tie – Cable
5	850-2004	4	Nut, Hex (M4)	15	870-2064-01	1	Nut, Nylon
6	526-2050	2	Washer, Lock (M4)	16	332-1389	1	Tie, Cable
7	330-0142	1	Washer, Flat (M4)	17	815-0792-04	2	Screw, Countersunk – Pan Head (M4 x .7 x 12)
8	332-3023	1	Box, Terminal – Heater	18	517-0021	1	Plug, Dot – Button
9	508-0228	1	Block, Terminal				
			Grommet				

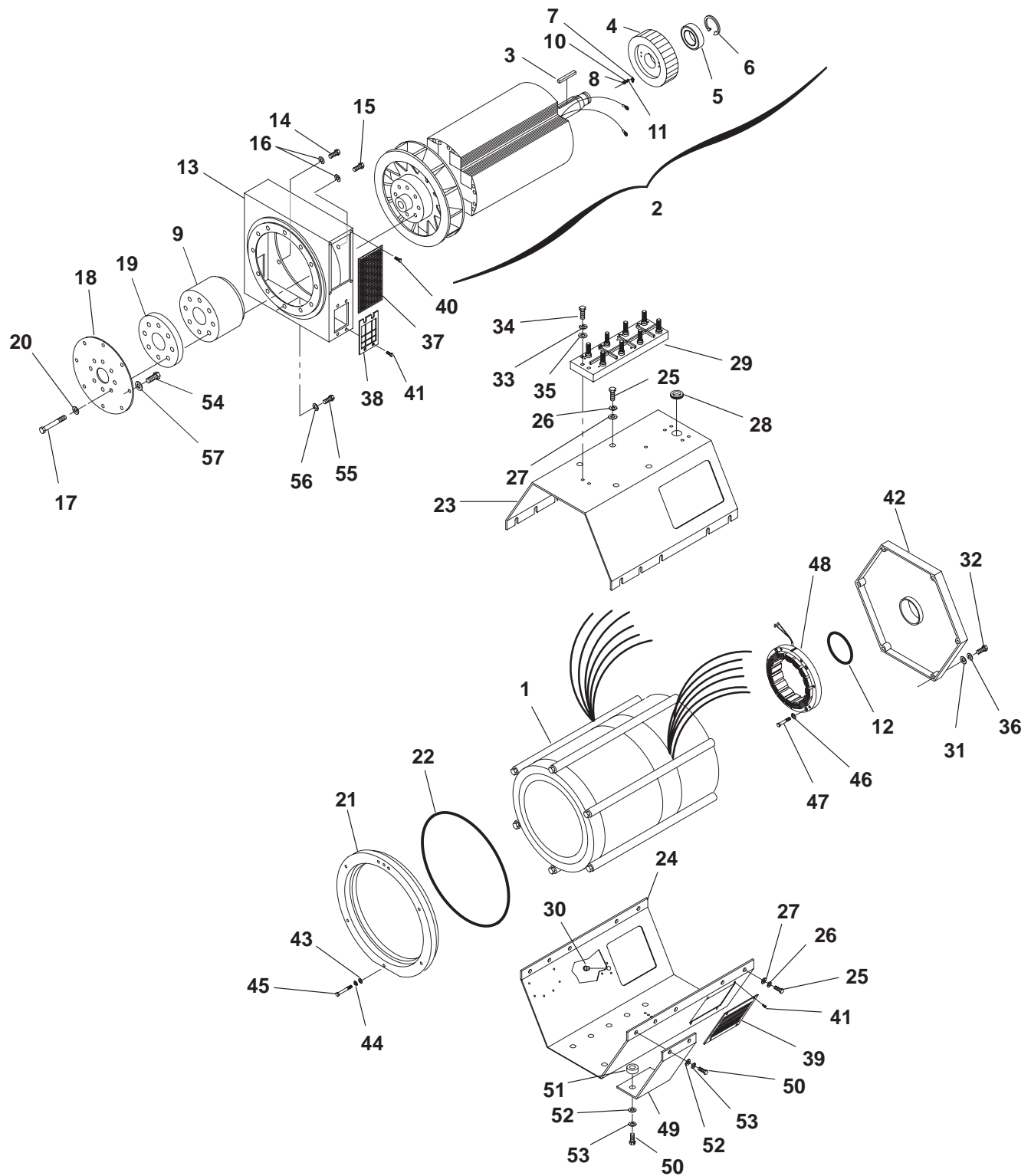
Permanent Magnet Generator



CP01

REF NO.	PART NO.	QTY USED	PART DESCRIPTION	REF NO.	PART NO.	QTY USED	PART DESCRIPTION
1	775-0049	1	Pin, Parallel	7	232-3462-03	4	Spacer, Cover
2	815-0761-01	1	Bolt, Mounting - PMG	8	821-6001-01	4	Screw, Hex Head (M5 x 10)
3	201-3446	1	Rotor, PMG	9	850-2010	1	Washer, Lock (M10)
4	220-4233	1	Stator, PMG	10	338-3011	1	Harness, PMG
5	232-3972	4	Clamp, Stator	11	850-2006	4	Washer, Lock (M6)
6	234-0875-02	1	Cover, End Bell				

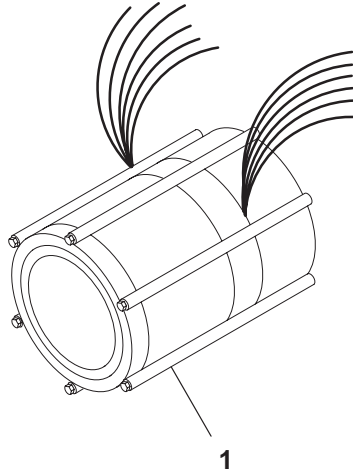
Generator



Generator

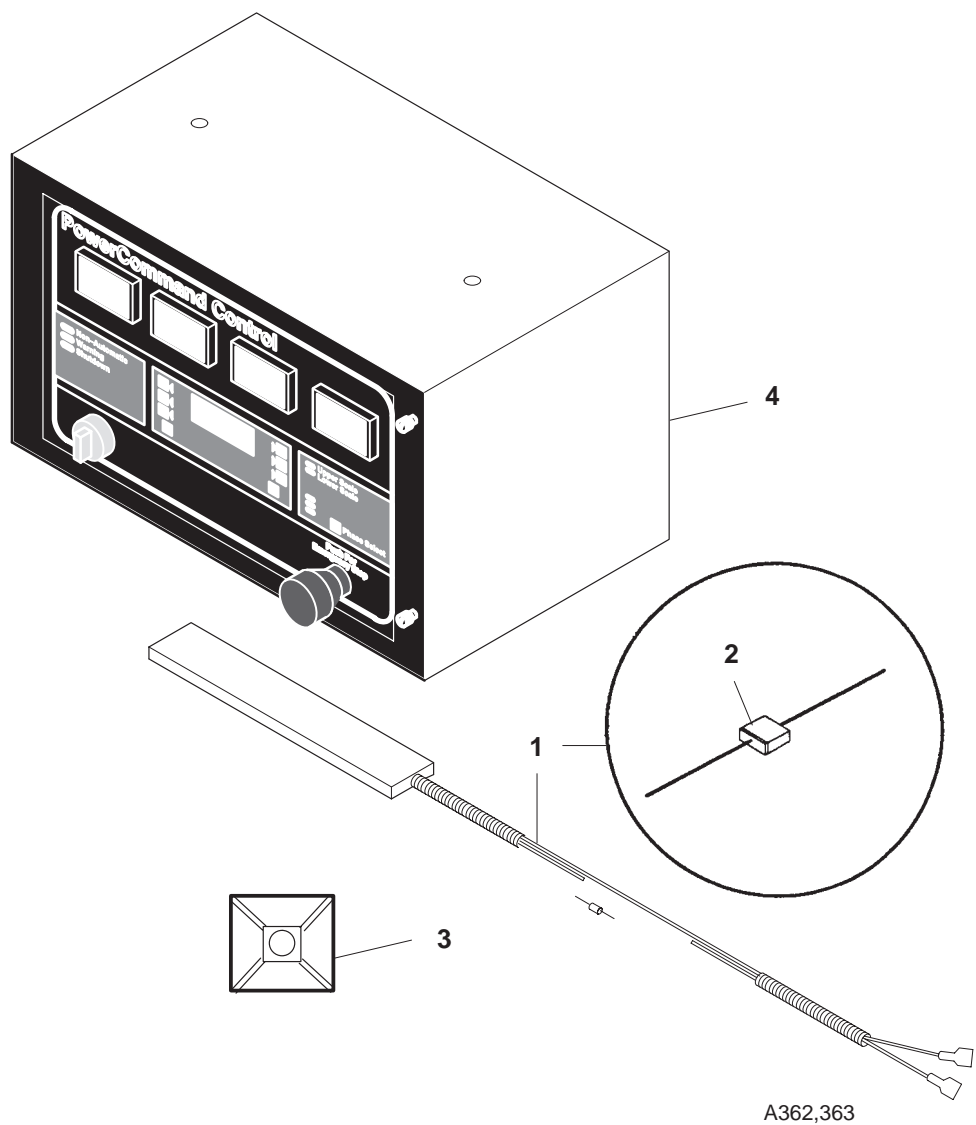
REF NO.	PART NO.	QTY USED	PART DESCRIPTION	REF NO.	PART NO.	QTY USED	PART DESCRIPTION
1			Stator, Generator (See Separate Page for Part Numbers)	24			Cover, Stator – Bottom
					232-3820-02	1	UC27 Stack Length 230/285
2			Rotor, Wound		232-3820-03	1	UC27 Stack Length 335
	201-3497-04	1	UC27 Core Length 285		232-3820-04	1	UC27 Stack Length 375
	201-3497-05	1	UC27 Core Length 335		232-3820-05	1	UCD27 Stack Length 450
	201-3497-06	1	UC27 Core Length 375	25	800-3017-54	10	Screw, Cap – Hex Head (M12 x 30)
	201-3497-03	1	UC27 Core Length 230				
	201-3561-07	1	UCD27 Core Length 450	26	850-0114-56	10	Washer, Lock (M12)
3	515-0298-03	1	Key, Exciter	27	526-0399-64	10	Washer, Flat (M12)
4	201-3434-03	1	Rotor, Wound – Exciter	28	508-1057	1	Grommet
5	510-0164	1	Bearing, Ball	29	232-3421	1	Block, Terminal
6	518-0083	1	Ring, Split – External	30	517-0135	1	Plug, Hole
7	304-0807	1	Varistor	31	526-0423	6	Washer
8	860-2006	2	Nut, Hex (M5 x .8)	32	800-3017-38	6	Screw, Cap – Hex Head (M10 x 30)
9			Hub, Drive – Generator				
	232-3695	1	UC27 Generator	33	850-2008	3	Washer, Lock (M8)
	232-4012	1	UCD27 Generator	34	800-2060	3	Screw, Cap – Hex Head (M8 x .35)
10	850-2005	2	Washer, Lock (M5)				
11	526-2060	2	Washer, Flat (M5)	35	526-2100	3	Washer, Flat (M8)
12	509-0266-02	1	O-Ring	36	850-0114-55	6	Washer, Lock (M10)
13			Adapter, Generator	37			Guard, Fan
	231-0317	1	UC27 Generator		234-0867	2	UC27
	231-0373	1	UCD27 Generator		234-0983	2	UCD27
14			Screw, Cap – Hex Head (M10)	38	234-0984	2	Cover, Adapter – UCD27
				39	234-0879	2	Screen, Air Inlet
	800-3017-42	5	UC27	40	821-6001-01	8	Screw (M5 x 10) – UC27
	800-3017-39	5	UCD27	41			Screw (M5 x 12)
15			Screw, Cap – Hex Head (M10)		821-6001-02	8	UC27
					821-6001-02	24	UCD27
	800-3017-44	1	UC27	42	211-0423	1	Bell, End
	800-3017-42	1	UCD27	43	526-0423	6	Washer
16	850-0114-55	6	Washer, Lock (M10)	44	850-0114-55	6	Washer, Lock (M10)
17			Screw, Cap – Hex Head (M16)	45	800-3017-38	6	Screw, Cap – Hex Head (M10 x 30)
	720-1119	8	UC27	46	850-2006	4	Washer, Lock (M6)
	720-1123	8	UCD27	47	800-2046	4	Screw, Cap – Hex Head (M6)
18	232-3699	3	Disk, Drive – Generator	48	220-4293-06	1	Stator, Wound – Exciter
19	232-3696-01	1	Spacer, Disc Drive – UCD27	49	232-3925	2	Bracket, Mounting – Generator
20	526-0259	8	Washer, Flat				
21			Adapter, Stator	50	800-2543-05	8	Screw, Cap – Hex Head (M12)
	231-0319	1	UC27				
	231-0374	1	UCD27	51	232-3730-04	4	Spacer, Mounting Foot
22	508-0139	–	Seal Edging – Bulk (Order By The Foot – 3 Feet Required)	52	526-0433	8	Washer – Hardened (M12)
				53	850-0117	8	Washer, Lock – Hardened (M12)
23			Cover, Stator – Top	54	805-0015	8	Bolt, Place (3/8–16 x .75)
	234-0937-02	1	UC27 Stack Length 230/285	55			Screw, Cap – Hex Head (M10 x 35)
	234-0937-03	1	UC27 Stack Length 335		800-2088	12	UC27
	234-0937-04	1	UC27 Stack Length 375		800-2088	10	UCD27
	234-0937-05	1	UCD27 Stack Length 450	56			Washer, Lock (M10)
					850-2010	12	UC27
					850-2010	10	UCD27
				57	526-0174	8	Washer, Flat (3/8)

Generator Stator



REF NO.	PART NO.	QTY USED	PART DESCRIPTION	REF NO.	PART NO.	QTY USED	PART DESCRIPTION
1			Stator	220-4448-18	1		GGKB, GGKC (B267, B268, B340)
			60 Hz				
			4 Lead				
			105C	220-4448-21	1		GGKB (B416, B417)
220-4448-11	1		GGKB	220-4448-22	1		GGKC (B418)
220-4448-12	1		GGKC	220-4448-23	1		GGKD (B418)
220-4448-38	1		GGKD	220-4448-39	1		GGKD (B268)
			125C				150C
220-4448-10	1		GGKB	220-4448-15	1		GGKB (B413, B414, B420)
220-4448-11	1		GGKC, GGKD	220-4448-16	1		GGKC, GGKD (B327, B328, B415)
			6 Lead				
			105C	220-4448-21	1		GGKB (B416, B417)
220-4448-33	1		GGKB	220-4448-22	1		GGKC (B418)
220-4448-34	1		GGKC, GGKD	220-4448-23	1		GGKD (B418)
			125C				
220-4448-33	1		GGKB, GGKC				
220-4448-34	1		GGKD				
			150C				50 Hz
220-4448-33	1		GGKB, GGKC, GGKD				12 Lead
			12 Lead				Broad Range
			Broad Range				Reconnectable,
			Reconnectable,	220-4448-16	1		105C
			105C				GGKB (B327, B328, B415)
220-4448-16	1		GGKB (B327, B328, B415)	220-4448-17	1		GGKC, GGKD (B339)
220-4448-17	1		GGKC, GGKD (B339)	220-4448-18	1		GGKB (B267, B268, B340)
220-4448-18	1		GGKB (B267, (B268), (B340)	220-4448-39	1		GGKD (B268)
220-4448-22	1		GGKB (B418)				125C
220-4448-23	1		GGKC, GGKD (B418)	220-4448-16	1		GGKB, GGKC, GGKD (B327, B328, B415)
220-4448-39	1		GGKC, GGKD (B268)	220-4448-17	1		GGKB, GGKC (B339)
			125C	220-4448-18	1		GGKD (B267, (B268), (B340)
220-4448-15	1		GGKB (B413, B414, B420)				150C
220-4448-16	1		GGKC (B327, B328, B415)	220-4448-15	1		GGKB
220-4448-17	1		GGKD (B339)	220-4448-16	1		GGKC, GGKD

Control and Control Heater

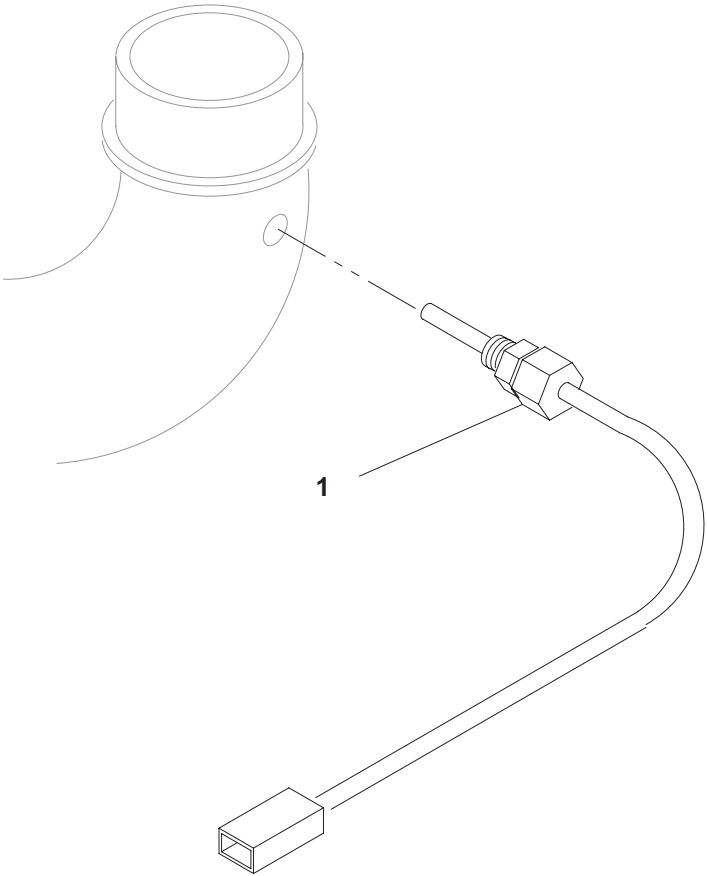


REF NO.	PART NO.	QTY USED	PART DESCRIPTION
1			Heater Assembly, Control – 100 Watt (Includes Rectifier)
	300-4515-01	1	120 Volt
	300-4515-02	1	240 Volt
2	357-0114	1	Rectifier (3 Amp)
3	332-3338	1	Mount, Cable

REF NO.	PART NO.	QTY USED	PART DESCRIPTION
4	—	1	Control, PowerCommand

Note: For PowerCommand Control Service Replacement Parts, Order PowerCommand Control for Generator Sets Parts Catalog Number 960-0205.

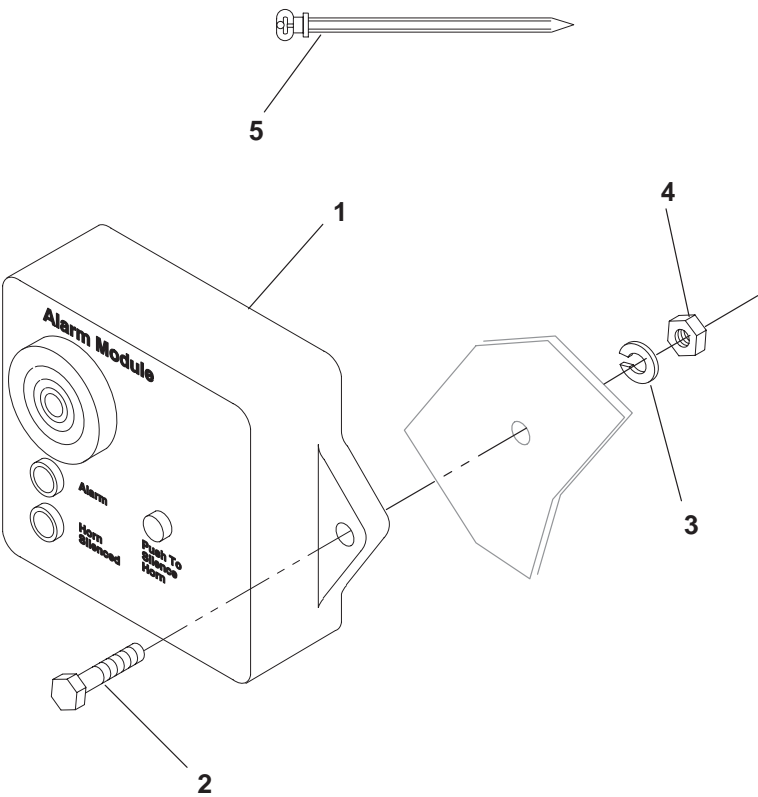
Pyrometer



H244

REF NO.	PART NO.	QTY USED	PART DESCRIPTION	REF NO.	PART NO.	QTY USED	PART DESCRIPTION
1	193-0446-01		Pyrometer (12 Inches)				

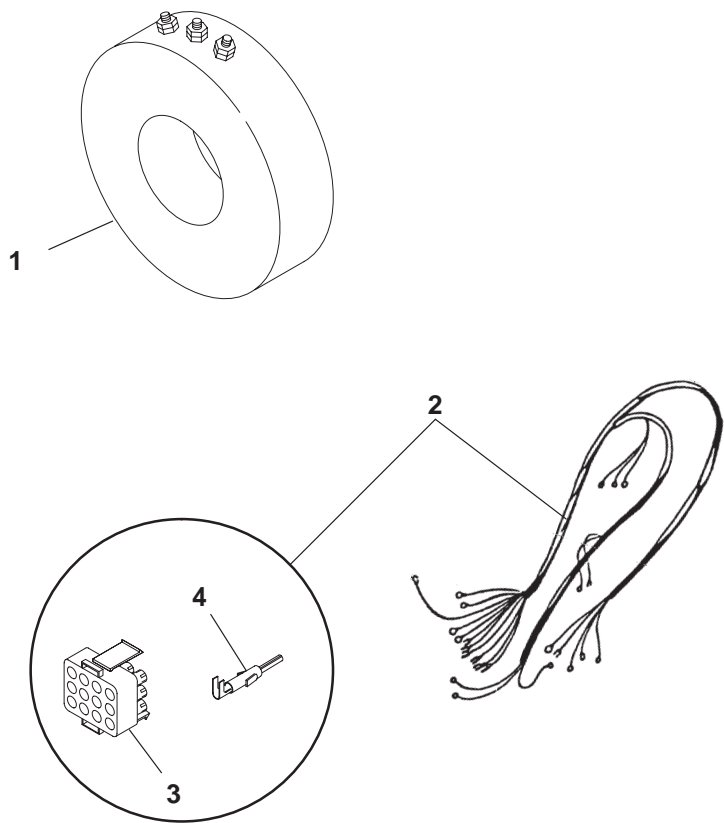
Alarm Module



KA08

REF NO.	PART NO.	QTY USED	PART DESCRIPTION	REF NO.	PART NO.	QTY USED	PART DESCRIPTION
1	300-3998-02	1	Module, Alarm	3	850-0040	2	Washer, Lock (1/4)
2	800-0006	2	Screw, Cap – Hex Head (1/4-20 x 7/8)	4	862-0001	2	Nut, Hex (1/4-20)
				5	332-0942	3	Tie, Cable

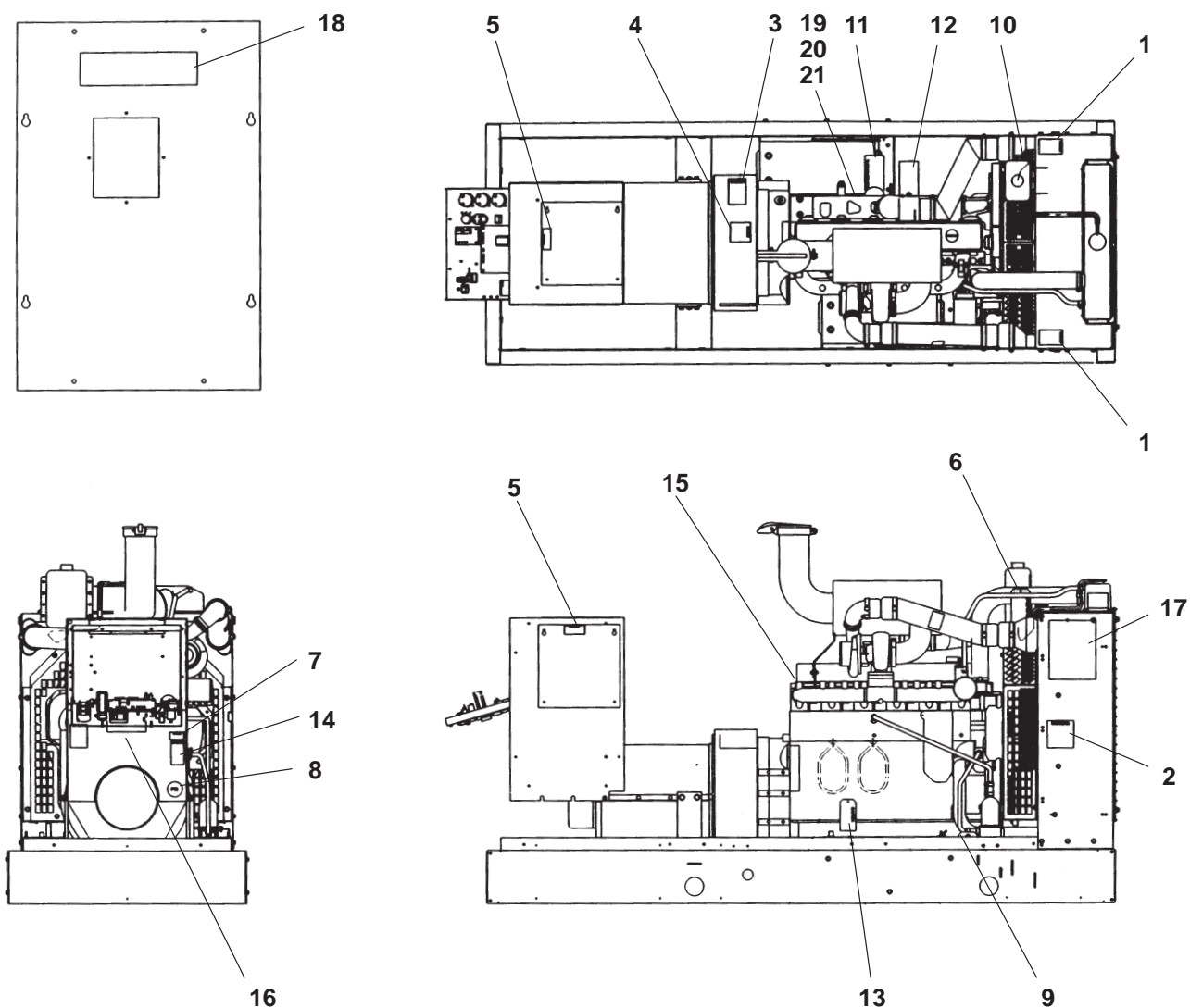
Current Transformer



H530,H532,H555

REF NO.	PART NO.	QTY USED	PART DESCRIPTION	REF NO.	PART NO.	QTY USED	PART DESCRIPTION
1			Transformer, Current (CT21, CT22, CT23)	2	338-3561	1	Harness, AC (Includes Plug and Sockets) (P9 to CT21,22,23 and 5,6,7,8)
	302-1922-10	3	Ratio 394/1 or 788/1	3	323-1644-03	1	Plug - 12 Place (P9)
	302-1922-11	3	Ratio 432/1 or 864/1	4	323-1648	10	Socket, Contact
	302-1922-14	3	Ratio 518/1 or 1036/1				
	302-1926-26	3	Ratio 302/1				
	302-1926-27	3	Ratio 362/1				

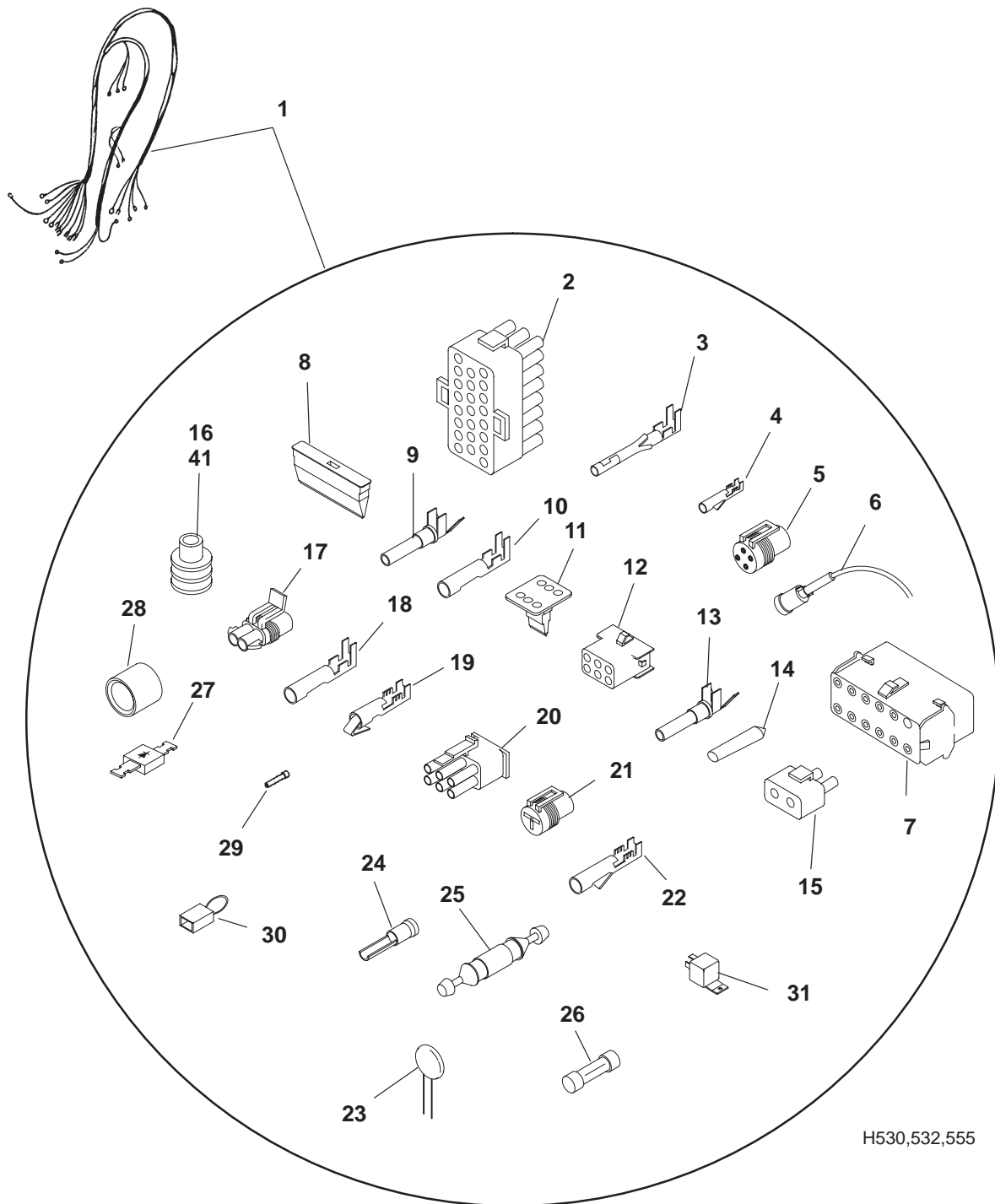
Miscellaneous Labels



CP01

REF NO.	PART NO.	QTY USED	PART DESCRIPTION	REF NO.	PART NO.	QTY USED	PART DESCRIPTION
1	098-4730	2	Label, Warning (Not used W/Remote Radiator)	11	098-7537		Tag, Oil Fill
2	098-4732	2	Label, Warning (Not used W/Remote Radiator)	12	098-2124	1	Tag, Caution
3	098-5842	1	Label, Caution	13	098-6460	1	Tag, Battery
4	098-4798	1	Label, Warning	14	098-5759	1	Label, Warning
5	098-5347	3	Label, Danger	15	098-5822	2	Label, Warning
6	098-7047	1	Tag, Water Fill (Not used W/Remote Radiator)	16	098-6139-04	1	Label, Model Identification (Used W/Remote Radiator Only)
7	098-6074-02	1	Label, Warning	17	098-6139-06	2	Label, Model Identification
8	098-4500	1	Label, Prototype	18	098-2304	1	Label, Warning (Used W/Circuit Breaker Only)
9	098-6030	1	Tag, Caution	19	098-7536	1	Tag, Natural Gas Fuel
10	098-7450	1	Label, Coolant (Not used W/Remote Radiator)	20	098-7161	1	Tag, LPG Vapor Fuel
				21	098-7162	1	Tag, LPG Liquid Fuel

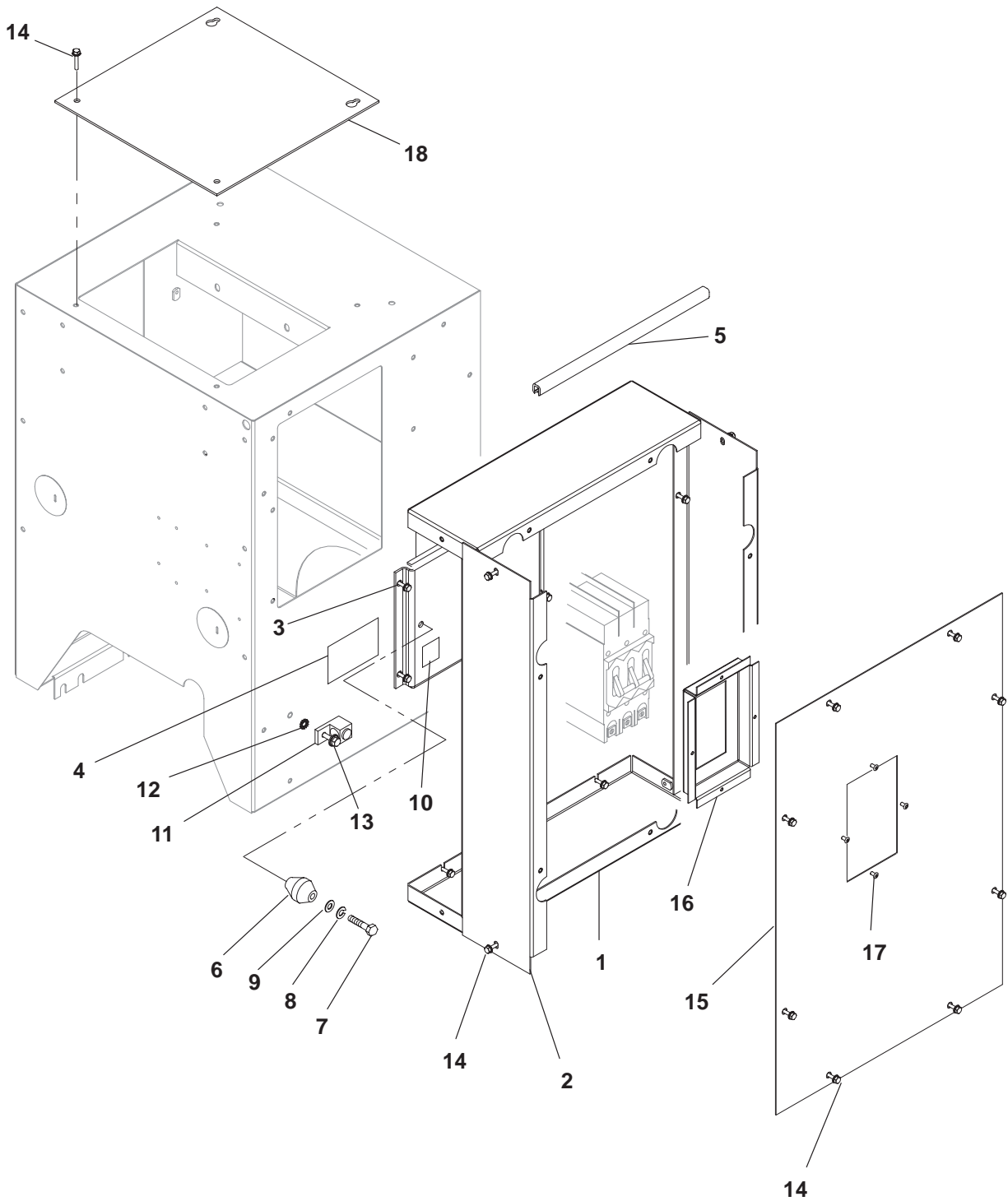
Wiring Harness Engine to Control



Wiring Harness Engine to Control

REF NO.	PART NO.	QTY USED	PART DESCRIPTION	REF NO.	PART NO.	QTY USED	PART DESCRIPTION
1	338-3729	1	Harness, Wiring – Engine To Control (Includes Parts Listed Below)	17	323-1540	2	Socket, Connector (2 Place) (E2, E4)
2			Plug, Connector (23 Place)	18	323-1444	2	Socket, Contact (Used In K1)
	323-1605-03	1	Colored Grey (P5)	19	332-3096-01	4	Socket, Contact (Used In E2, E4)
	323-1605-02	1	Colored Natural (P4)	20	323-1643-01	1	Plug, Connector (6 Place) (P10)
3	323-1614-01	34	Socket, Contact (Used In P4, P5)	21	323-1666	1	Socket, Connector (3 Place) (E1)
4	323-1709	3	Socket, Contact	22	323-1667	3	Socket, Contact (Used In E1)
5	323-1765	1	Housing, Connector (4 Pin)	23	304-0800	1	Varistor, Metaloxide
6	338-2592-01	1	Cable, Magnetic Pickup (84") (Includes Indented Sockets Listed Below) (P1)	24	332-3496	1	Pin, Contact
	323-1614-01	3	Socket, Contact	25	321-0362	3	Holder, Fuse
7	323-1580	1	Housing, Connector (12 Place) (J12)	26			Fuse
8	323-1581	1	Wedge (Used In J12)		321-0364-04	2	10 Amp (F2, F3)
9	323-1491	5	Pin, Contact (Used In J12)		321-0364-02	1	20 Amp (F1)
10	323-1648	5	Socket, Contact (Used In P10)	27	357-0030	2	Rectifier
11	323-1624	1	Wedge (Used In P7)	28	332-0418-01	1	Connector, Parallel (Quantity Used As Required)
12	323-1623	1	Plug, Connector (6 Place) (P7)	29	323-1591	2	Plug, Connector (P15)
13	323-1492	9	Socket, Contact (Used In P7)	30	338-3285	1	Harness Assembly, Jumper (Includes Parts Indented Below) (E6)
14	323-1615	1	Plug (Used On P4, P5) (Quantity Used As Required)		323-1652	1	Socket, Connector (2 Place)
15	323-1637	2	Socket, Connector (2 Place) (K1)		323-1445	2	Seal
16	323-1445	3	Seal (Used On E2, E4, E6)		323-1718	2	Pin, Contact
				31	307-2817-01	2	Relay

Circuit Breaker Box 10 – 630 Amp

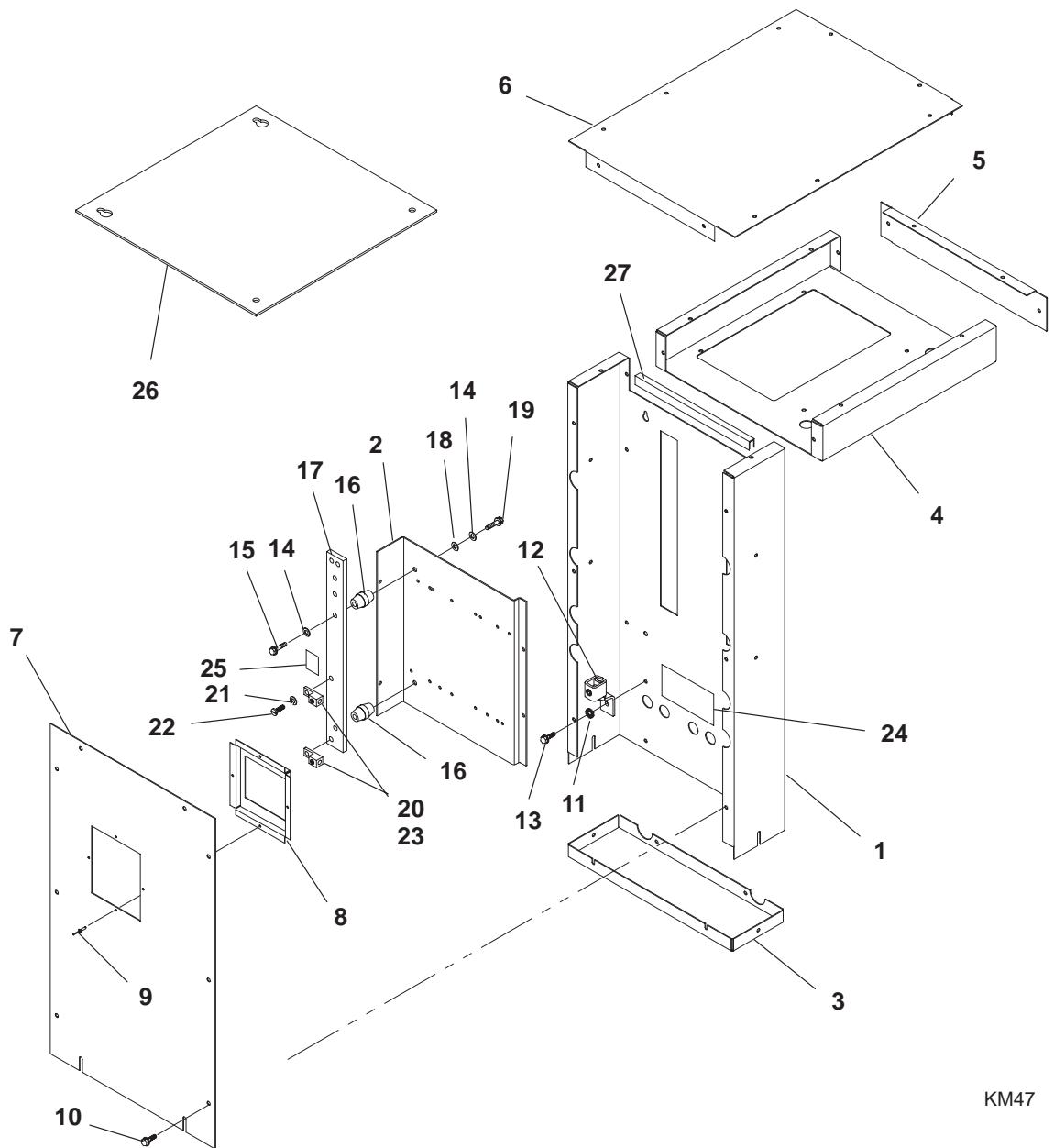


Circuit Breaker Box 10 – 630 Amp

REF NO.	PART NO.	QTY USED	PART DESCRIPTION	REF NO.	PART NO.	QTY USED	PART DESCRIPTION
1	319-3072	2	Panel, End – CB Box	16			Cutout, CB Box
2	319-2978	2	Panel, Side – CB Box				UL
3	319-3149	1	Bracket, Mounting – CB	319-3150	1		600 Volt, 300–630 Amp, 3 Pole
4	098-2304	1	Label, Warning	319-3240	1		240 Volt, 300–400 Amp, 2/3 Pole
5	508-0239	–	Edging – Bulk (Order By The Foot – 2 Feet Required)	319-3242	1		240 Volt, 100–250 Amp, 2/3 Pole
6	332-2744-07	1	*Standoff, Insulator	319-3242	1		600 Volt, 50–250 Amp, 3 Pole
7	800-0048	2	*Screw, Cap – Hex Head (3/8–16 x .75)				IEC
8	850-0050	2	*Washer, Lock (3/8)	319-3150	1		690 Volt, 300–630 Amp, 3/4 Pole
9	526-0029	1	*Washer, Flat (3/8)	319-3242	1		690 Volt, 70–250 Amp, 3/4 Pole
10	098-5854-04	1	*Label, Bus – Warning	17	818-0231-02	4	Rivet, Pop
11	332-1473	1	Lug, Solderless	18	319-2996	1	Cover, Housing – Control
12	856-0008	1	Washer, Lock – EIT (5/16)				
13	821-6003-02	1	Screw, SEMS – Hex Head (M8 x 1.25 x 20)				
14	821-6002-03	24	Screw, SEMS – Hex Head (M6 x 1 x 16)				
15	319-3151	1	Cover, CB Box				

* = UL Rated Breakers only.

Circuit Breaker Box 700 – 1000 Amp



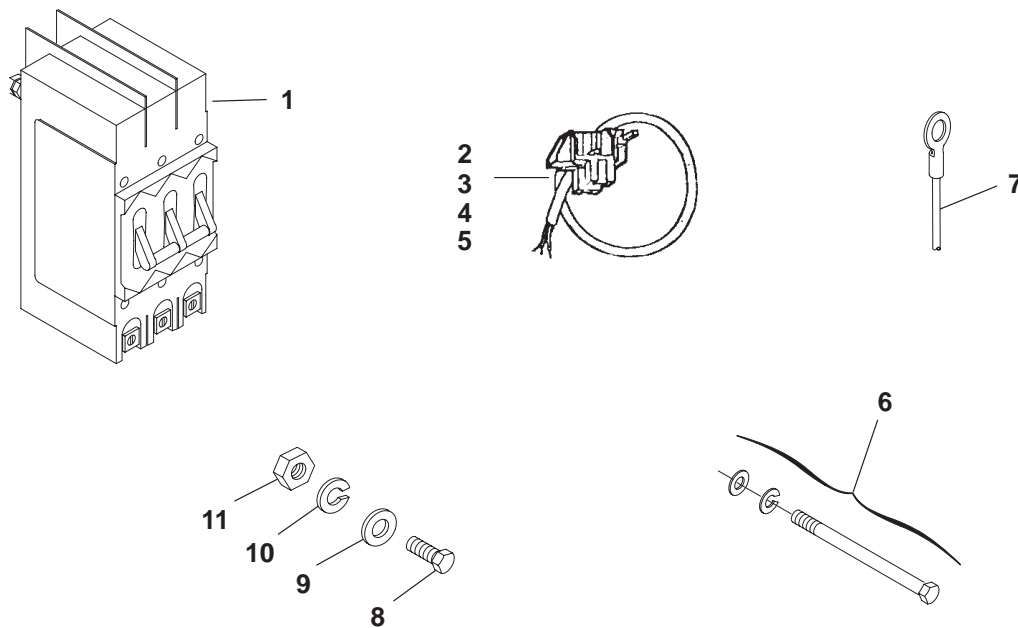
KM47

Circuit Breaker Box 700 – 1000 Amp

REF NO.	PART NO.	QTY USED	PART DESCRIPTION	REF NO.	PART NO.	QTY USED	PART DESCRIPTION
1	319-3136	1	Box, Circuit Breaker	16	332-2305	2	*Standoff, Insulator
2	319-3135	1	Bracket, Mounting – Circuit Breaker	17	337-2974	1	*Bar, Neutral
3	319-3072	1	Panel, End – CB Box	18	526-0113	2	*Washer, Flat (5/16)
4	319-3236	1	Box, Output	19	800-0029	2	*Screw, Cap – Hex Head (5/16-18 x 1-1/8)
5	319-3237	1	End, Box – Output	20	332-2660	2	*Lug, Solderless
6	319-3238	1	Cover, Box – Output	21	850-0039	4	*Washer, Lock (1/4)
7	319-3137	1	Cover, Box – CB	22	822-0085	2	*Screw, Pan Head (1/4-20 x 5/8)
8	319-3134	1	Cutout, Box – CB	23	822-0091	2	*Screw, Pan Head (1/4-20 x 1-1/2)
9	818-0231-02	4	Rivet, Pop	24	098-2304	1	*Label, Warning
10	821-6002-03	46	Screw, SEMS – Hex Head (M6 x 1 x 16)	25	098-5854-04	1	*Label, Bus – Warning
11	856-0008	1	Washer, Lock – EIT (5/16)	26	319-2996	1	Cover, Control Housing
12	332-2001	1	Lug, Solderless	27	508-0305-02	–	Edging – Bulk (Order By The Foot – 4 Feet Required)
13	821-6003-02	1	Screw, SEMS – Hex Head (M8 x 1.25 x 20)				
14	850-0045	4	*Washer, Lock (5/16)				
15	800-0025	2	*Screw, Cap – Hex Head (5/16-18 x 5/8)				

* = Used with 3 pole breaker only.

Circuit Breaker



REF NO.	PART NO.	QTY USED	PART DESCRIPTION
1			Breaker, Circuit UL Listed (240V) 2 Pole
	320-1961-07	1	100 Amp
	320-1961-06	1	125 Amp
	320-1961-05	1	150 Amp
	320-1961-04	1	175 Amp
	320-1961-03	1	200 Amp
	320-1961-02	1	225 Amp
	320-1961-01	1	250 Amp
	320-1962-03	1	300 Amp
	320-1962-02	1	350 Amp
	320-1962-01	1	400 Amp
			3 Pole
	320-1961-14	1	100 Amp
	320-1961-13	1	125 Amp
	320-1961-12	1	150 Amp
	320-1961-11	1	175 Amp
	320-1961-10	1	200 Amp
	320-1961-09	1	225 Amp
	320-1961-08	1	250 Amp
	320-1962-06	1	300 Amp
	320-1962-05	1	350 Amp
	320-1962-04	1	400 Amp

REF NO.	PART NO.	QTY USED	PART DESCRIPTION
			UL (600V) IEC (690V) 3 Pole
	320-1959-18	1	50 Amp
	320-1959-17	1	60 Amp
	320-1959-10	1	70 Amp
	320-1959-09	1	80 Amp
	320-1959-08	1	90 Amp
	320-1959-07	1	100 Amp
	320-1959-06	1	125 Amp
	320-1959-05	1	150 Amp
	320-1959-04	1	175 Amp
	320-1959-03	1	200 Amp
	320-1959-02	1	225 Amp
	320-1959-01	1	250 Amp
	320-1960-06	1	300 Amp
	320-1960-05	1	350 Amp
	320-1960-04	1	400 Amp
	320-1960-03	1	450 Amp
	320-1960-02	1	500 Amp
	320-1960-01	1	600 Amp
	320-1964-05	1	700 Amp
	320-1964-04	1	800 Amp
			IEC 4 Pole
	320-1959-13	1	160 Amp
	320-1959-12	1	200 Amp
	320-1959-11	1	250 Amp
	320-1960-10	1	320 Amp
	320-1960-09	1	400 Amp
	320-1960-08	1	500 Amp
	320-1960-07	1	630 Amp

Continued...

Circuit Breaker

REF NO.	PART NO.	QTY USED	PART DESCRIPTION	REF NO.	PART NO.	QTY USED	PART DESCRIPTION
Continued...				7			Lead (Quantity Used As Required)
			Accessories, Circuit Breaker: The following are used on 320-1964-XX Circuit Breakers				30" Leads
2	320-1977-01	1	Switches – Includes 1 Trip Alarm and 1 Auxiliary Contact	226-3505-01	1		3/8" Ring Terminal End to 1" Stripped End (#4 Wire)
3	320-1977-02	1	12 Volt Shunt Trip	226-3505-03	1		3/8" Ring Terminal End to 3/8" Ring Terminal End (#4 Wire)
			Accessories, Circuit Breaker: The following are used on 320-1959-XX and 320-1960-XX Circuit Breakers	226-3505-04	1		3/8" Ring Terminal End to 3/8" Ring Terminal End (#1 Wire)
4	320-1981-01	2	Switch – Used as Trip Alarm or Auxiliary Switch	226-0893	1		33" Leads
5	320-1981-02	1	12 Volt Shunt Trip				3/8" Ring Terminal End to 3/8" Ring Terminal End
6			Package, Hardware – Mounting (Includes Screws, Nuts and Lock Washers – 1 Package Required Per Switch)	226-3505-07	1		38" Leads
							3/8" Ring Terminal End to 1" Stripped End (#1 Wire)
				226-3505-08	1		3/8" Ring Terminal End to 3/8" Ring Terminal End (#1 Wire)
	320-1986-08	1	Used With 320-1959-XX Circuit Breakers	8	800-0052	2	Screw (3/8-16 x 1-1/2)
				9	526-0029	4	Washer, Flat (3/8)
	320-1986-07	1	Used With 320-1960-XX Circuit Breakers	10	850-0050	2	Washer, Lock (3/8)
				11	862-0003	2	Nut (3/8)
	320-1986-06	1	Used With 320-1961-XX Circuit Breakers (Screws Only)				
	320-1986-05	1	Used With 320-1962-XX Circuit Breakers (Screws Only)				
	320-1986-01	1	Used With 320-1964-XX Circuit Breakers				

Numerical Index

<u>Part No.</u>	<u>Page</u>	<u>Part No.</u>	<u>Page</u>	<u>Part No.</u>	<u>Page</u>	<u>Part No.</u>	<u>Page</u>
098-2124, 37		130-4716, 13		220-4448-21, 32		302-1922-11, 36	
098-2304, 37, 41, 43		130-4719, 11		220-4448-22, 32		302-1922-14, 36	
098-4500, 17, 19, 21, 37		130-4720, 11		220-4448-23, 32		302-1926-26, 36	
098-4730, 17, 19, 21, 37		130-4733, 13		220-4448-33, 32		302-1926-27, 36	
098-4732, 37		130-4734, 14		220-4448-34, 32		304-0800, 39	
098-4798, 37		130-4735, 13		220-4448-38, 32		304-0807, 31	
098-5347, 37		130-4750, 13		220-4448-39, 32		307-2817-01, 39	
098-5429, 17, 19, 21		130-4848, 9, 17, 19, 21		226-0893, 45		309-0159, 4	
098-5759, 37		154-3021, 13		226-3505-01, 45		309-0269, 4	
098-5822, 37		155-2062-13, 8, 9		226-3505-03, 45		319-2220, 27	
098-5842, 37		155-2305, 8		226-3505-04, 45		319-2247, 27	
098-5854-04, 41, 43		155-2570, 7, 8, 9		226-3505-07, 45		319-2653, 17, 19, 21	
098-6030, 37		155-3150-02, 8		226-3505-08, 45		319-2967, 27	
098-6074-02, 37		155-3150-03, 9		231-0317, 31		319-2978, 25, 41	
098-6139-04, 37		155-3163-01, 7		231-0319, 31		319-2979-02, 25	
098-6139-06, 37		155-3164-03, 8		231-0373, 31		319-2996, 25, 27, 41, 43	
098-6460, 37		155-3164-04, 9		231-0374, 31		319-3072, 25, 41, 43	
098-7047, 37		155-3180, 8		232-3421, 31		319-3134, 43	
098-7161, 37		155-3219, 8, 9		232-3462-03, 29		319-3135, 43	
098-7162, 37		155-3238, 17, 19, 21		232-3695, 31		319-3136, 43	
098-7281, 28		155-3260-01, 9		232-3696-01, 31		319-3137, 43	
098-7450, 37		155-3278-03, 9		232-3699, 31		319-3148, 27	
098-7451, 9, 13, 19, 21		193-0432, 4		232-3730-04, 31		319-3149, 41	
098-7470, 19, 21		193-0444, 4		232-3820-02, 31		319-3150, 41	
098-7536, 37		193-0446-01, 34		232-3820-03, 31		319-3151, 41	
098-7537, 37		193-0468, 10		232-3820-04, 31		319-3236, 43	
102-1147, 6		201-3434-03, 31		232-3820-05, 31		319-3237, 43	
102-1237, 6		201-3446, 29		232-3925, 31		319-3238, 43	
102-1356, 4		201-3497-03, 31		232-3972, 29		319-3240, 41	
102-1448-02, 4		201-3497-04, 31		232-4012, 31		319-3242, 41	
128-0252, 19, 21		201-3497-05, 31		234-0867, 31		319-3278, 27	
130-3216-01, 13		201-3497-06, 31		234-0875-02, 29		320-1959-01, 44	
130-3721-01, 13		201-3561-07, 31		234-0879, 31		320-1959-02, 44	
130-3984, 13		211-0423, 31		234-0937-02, 31		320-1959-03, 44	
130-4622, 14		220-4233, 29		234-0937-03, 31		320-1959-04, 44	
130-4691-02, 13		220-4293-06, 31		234-0937-04, 31		320-1959-05, 44	
130-4692, 13		220-4448-10, 32		234-0937-05, 31		320-1959-06, 44	
130-4693, 13		220-4448-11, 32		234-0983, 31		320-1959-07, 44	
130-4694, 13		220-4448-12, 32		234-0984, 31		320-1959-08, 44	
130-4695, 13		220-4448-15, 32		300-3998-02, 35		320-1959-09, 44	
130-4697, 13		220-4448-16, 32		300-4515-01, 33		320-1959-10, 44	
130-4699, 13		220-4448-17, 32		300-4515-02, 33		320-1959-11, 44	
130-4700, 13		220-4448-18, 32		302-1922-10, 36		320-1959-12, 44	

Numerical Index

<u>Part No.</u>	<u>Page</u>	<u>Part No.</u>	<u>Page</u>	<u>Part No.</u>	<u>Page</u>	<u>Part No.</u>	<u>Page</u>
320-1959-13, 44		320-1986-08, 45		332-3096-01, 39		405-5916, 17, 19, 21	
320-1959-17, 44		321-0362, 39		332-3126-01, 27		405-5917, 17, 19, 21	
320-1959-18, 44		321-0364-02, 39		332-3126-02, 27		405-5926, 19, 21	
320-1960-01, 44		321-0364-04, 39		332-3196, 4		405-5950, 19, 21	
320-1960-02, 44		323-1444, 39		332-3228, 28		405-5951, 19, 21	
320-1960-03, 44		323-1445, 39		332-3338, 33		405-5952, 19, 21	
320-1960-04, 44		323-1491, 39		332-3496, 39		405-5953, 19, 21	
320-1960-05, 44		323-1492, 39		333-0438-07, 28		405-5954, 19, 21	
320-1960-06, 44		323-1540, 39		333-0438-08, 28		405-5955, 19, 21	
320-1960-07, 44		323-1580, 39		333-0588-03, 11		405-5956, 19, 21	
320-1960-08, 44		323-1581, 39		333-0588-04, 11		405-5957, 19, 21	
320-1960-09, 44		323-1591, 39		333-0615, 11		405-5958, 19, 21	
320-1960-10, 44		323-1605-02, 39		337-0090, 22		405-5959, 19, 21	
320-1961-01, 44		323-1605-03, 39		337-2974, 43		405-5960, 19, 21	
320-1961-02, 44		323-1614-01, 39		338-2592-01, 39		405-5961, 19, 21	
320-1961-03, 44		323-1615, 39		338-3011, 29		405-5962, 19, 21	
320-1961-04, 44		323-1623, 39		338-3285, 39		405-5963, 19, 21	
320-1961-05, 44		323-1624, 39		338-3525, 27		405-5966, 19, 21	
320-1961-06, 44		323-1637, 39		338-3561, 36		405-5986, 19, 21	
320-1961-07, 44		323-1643-01, 39		338-3709, 27		405-5988, 21	
320-1961-08, 44		323-1644-03, 36		338-3729, 39		405-5989, 21	
320-1961-09, 44		323-1648, 36, 39		357-0030, 39		405-5990, 21	
320-1961-10, 44		323-1652, 39		357-0114, 33		405-5991-01, 21	
320-1961-11, 44		323-1666, 39		402-0371, 22		405-5991-02, 21	
320-1961-12, 44		323-1667, 39		402-0510, 27		405-5992, 21	
320-1961-13, 44		323-1709, 39		402-0644, 22		405-5993, 21	
320-1961-14, 44		323-1718, 39		403-4058, 24		405-5994, 21	
320-1962-01, 44		323-1765, 39		403-4110, 23		405-5997, 19, 21	
320-1962-02, 44		330-0142, 28		403-4116, 23		405-5998, 19, 21	
320-1962-03, 44		332-0418-01, 39		403-4154-01, 22		405-6000-01, 21	
320-1962-04, 44		332-0942, 35		403-4183, 23		405-6000-02, 19, 21	
320-1962-05, 44		332-1389, 28		403-4188-01, 22		405-6000-03, 19, 21	
320-1962-06, 44		332-1473, 25, 41		403-4215, 23		405-6000-04, 21	
320-1964-04, 44		332-2001, 43		403-4218, 22		405-6000-07, 21	
320-1964-05, 44		332-2305, 43		405-5734, 19, 21		405-6001-01, 19, 21	
320-1977-01, 45		332-2634, 4, 27		405-5744, 17, 19, 21		405-6001-02, 19, 21	
320-1977-02, 45		332-2660, 43		405-5832, 17		405-6002, 19, 21	
320-1981-01, 45		332-2744-07, 41		405-5841, 19, 21		405-6003, 19, 21	
320-1981-02, 45		332-2878, 27		405-5902, 17, 19, 21		405-6005, 19, 21	
320-1986-01, 45		332-2879-05, 27		405-5903, 17, 19, 21		405-6010, 21	
320-1986-05, 45		332-2987, 27		405-5908, 17, 19, 21		405-6013, 21	
320-1986-06, 45		332-3023, 28		405-5909, 17, 19, 21		405-6014, 21	
320-1986-07, 45		332-3024-11, 28		405-5915, 17		405-6015, 19, 21	

Numerical Index

<u>Part No.</u>	<u>Page</u>	<u>Part No.</u>	<u>Page</u>	<u>Part No.</u>	<u>Page</u>	<u>Part No.</u>	<u>Page</u>
405-6034, 19, 21		503-2095, 13		526-2050, 28		821-6002-03, 11, 13, 17, 19, 21, 23, 25, 27, 43	
405-6044, 21		504-0003, 13		526-2060, 31		821-6003-02, 8, 9, 13, 17, 19, 21, 24, 25, 27, 41, 43	
405-6109, 19, 21		504-0011, 6, 15		526-2100, 31		821-6003-03, 41	
405-6132, 21		505-0019, 4, 11		526-2120, 13, 27		822-0085, 43	
405-6301-02, 17		505-0050, 6		526-2133, 4		822-0091, 43	
405-6302-02, 9		505-0057, 7		526-2140, 4		822-3047, 28	
405-6303-02, 17		505-0060, 4		720-1119, 31		822-3075, 28	
405-6306-02, 9		505-0101, 4		720-1123, 31		850-0039, 43	
406-0782, 17, 19, 21		505-0110, 13		775-0049, 29		850-0040, 35	
406-0831, 17, 19, 21		505-0185, 6, 15		800-0006, 35		850-0045, 43	
406-0835, 17, 19, 21		508-0139, 31		800-0025, 43		850-0050, 41, 45	
416-0619, 4		508-0228, 28		800-0029, 43		850-0114-55, 31	
416-0993-02, 24		508-0239, 25, 41		800-0048, 41		850-0114-56, 31	
416-1000, 4		508-0305-02, 43		800-0052, 45		850-0117, 31	
416-1033, 24		508-1057, 31		800-0607, 22		850-2003, 28	
502-0047, 15		508-1119, 27		800-2046, 31		850-2004, 28	
502-0050, 13		509-0266-02, 31		800-2058, 4		850-2005, 31	
502-0153, 13		510-0164, 31		800-2059, 13		850-2006, 29, 31	
502-0802, 15		515-0298-03, 31		800-2060, 31		850-2008, 4, 31	
502-0942, 5		517-0021, 28		800-2084, 4		850-2010, 27, 29, 31	
502-0943, 4, 11		517-0094, 22		800-2088, 31		856-0008, 25, 27, 41, 43	
502-1162, 13		517-0131, 19, 21, 27		800-2099, 13		856-0013, 4, 22	
502-1292, 13		517-0135, 31		800-2111, 4		860-2005, 28	
502-1310, 13		517-0138-07, 19, 21		800-2124, 22		860-2006, 31	
502-1311, 13		517-0322, 19, 21		800-2543-02, 22		860-2009, 27	
502-1313, 13		518-0083, 31		800-2543-05, 31		862-0001, 35	
503-0098, 6		518-0548-02, 6		800-3017-38, 31		862-0003, 45	
503-0183, 5, 11		518-0548-05, 5		800-3017-39, 31		862-0026-55, 5	
503-0197, 6, 15		518-0601, 3		800-3017-42, 31		862-0044, 22	
503-0276, 13		525-0304, 3		800-3017-44, 31		865-0030, 24	
503-0365, 13		525-0305, 3		800-3017-54, 31		870-0320, 9	
503-0386, 5		525-0306, 3		800-3034, 28		870-0504, 17, 19, 21	
503-0465, 13		526-0011, 19, 21		805-0015, 31		870-2055, 9, 27	
503-0685, 13		526-0013, 27		815-0761-01, 29		870-2064-01, 28	
503-1195, 15		526-0029, 41, 45		815-0792-04, 28		895-0363, 17, 19, 21	
503-1379-01, 13		526-0113, 13, 43		815-0839, 27		895-0382, 17	
503-1445-06, 13		526-0174, 31		818-0231-02, 13, 14, 17, 19, 21, 41, 43		895-0384, 19, 21	
503-1554, 13		526-0238-01, 22		818-0237-01, 17, 19, 21		895-0385, 19, 21	
503-1634-02, 11		526-0259, 31		821-5000-05, 9		895-0386, 19, 21	
503-1872-04, 13		526-0399-64, 31		821-5003-01, 27		898-1195-02, 13	
503-1872-06, 13		526-0423, 31		821-6001-01, 29, 31			
503-1872-07, 13		526-0433, 22, 31		821-6001-02, 31			
503-2045, 13		526-0443, 22					



Onan Corporation
1400 73rd Avenue N.E.
Minneapolis, MN 55432
612-574-5000
Telex: 275477
Fax: 612-574-8087

Onan is a registered trademark of Onan Corporation
Cummins is a registered trademark of Cummins Engine Company