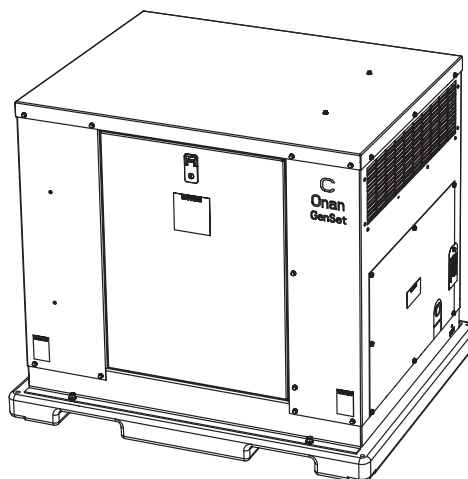


**Onan**

# *Genset* *Parts Catalog*

**GHAB**



## MODEL IDENTIFICATION

To avoid errors or delay in filling your parts order, always give the MODEL, SPEC NO. and SERIAL NO. from the Onan nameplate.

For handy reference, insert your nameplate information in the spaces below.

---

MODEL AND SPEC NO.

---

SERIAL NO.

---

DIGITAL CONTROL SOFTWARE VERSION  
AND DATE (IF APPLICABLE)

## SAFETY PRECAUTIONS

The following symbols are used in Onan manuals to alert users to the potentially dangerous conditions relating to maintenance of equipment and replacement of parts. Please read and observe.



*This symbol warns of immediate hazards which will result in severe personal injury or death.*



*This symbol refers to a hazard or unsafe practice which can result in severe personal injury or death.*



*This symbol refers to a hazard or unsafe practice which can result in severe personal injury or product or property damage.*

## PRODUCT SAFETY PRECAUTIONS



***Service and repair of Onan equipment must be performed by trained, experienced personnel only. Improper service or repair may result in property damage, severe personal injury or death. Do not use this catalog as a guide to servicing your equipment. Read and follow the IMPORTANT SAFETY INSTRUCTIONS in the Service Manual appropriate for the equipment you are working on.***



***Contact with USED ENGINE OILS has been identified by a United States federal agency and some USA state agencies as causing CANCER or REPRODUCTIVE TOXICITY. When checking or changing engine oils take all necessary precautions not to ingest, breathe the fumes or contact the used oil.***



***Contact with ASBESTOS has been identified by a United States federal agency and some USA state agencies as causing CANCER or REPRODUCTIVE TOXICITY. When handling engine gaskets take all necessary precautions not to ingest, breathe or contact the dust from the gaskets! Use adequate ventilation and wear protective gloves, masks and clothing!***



***Contact with BENZINE and LEAD, found in gasoline, fuel additives and solvents has been identified by a United States federal agency and some USA state agencies as causing CANCER or REPRODUCTIVE TOXICITY. When checking, draining or adding gasoline and fuel additives or using solvents take all necessary precautions not to ingest, breathe the fumes or contact the liquids. Use adequate ventilation and wear protective gloves, masks and protective clothing!***

## Introduction

This parts catalog applies to the standard generator set listed below. Parts are arranged in groups of related items and each illustrated part is defined by a reference number corresponding to the same reference number in the parts list. Parts illustrations are typical. Using the model and specification number from your generator set nameplate, select parts that apply to your set. Unless otherwise mentioned in the description or page heading, parts are interchangeable between models. Throughout this catalog right and left sides are determined by facing the engine end (front ) of the set.

<u>MODEL</u>	<u>HERTZ</u>	<u>FUEL</u>
12GHAB-101	60	NG/LPV
12GHAB-102	60	LP Liquid

\* – The diagonal line (/) or dash (-) in the model and specification number separates generator set characteristics from the specification number and letter. The specification number denotes customer requested options or deviations from a standard model. The specification letter advances (A to B, B to C, etc.) with major manufacturing changes.

### WIRING DIAGRAM

611-1266

The Following **Transfer Switches** are used with the GHAB Generator Sets:

RST60-178  
RST100-177  
RST200-176



## Index

Actuator, Governor, **14**  
Adapter Assy, Oil Fill, **23**  
Adapter, Generator, **35**  
Adapter, Oil Fill Cap, **23**  
Adapter, Oil Filter, **24**  
Arm, Governor, **13**

Ball, Governor, **8**  
Ball, Governor Shaft Bearing, **13**  
Base, Mounting, **27**  
Base, Oil, **23**  
Base, Skid, **27**  
Bearing, Camshaft, **7**  
Bearing, Connecting Rod Half, **9**  
Bearing, Cylinder Block Flanged Sleeve, **7**  
Bearing, Generator Rotor Ball, **35**  
Bearing, Governor Shaft, **13**  
Bearing, Rear Crankshaft, **7**  
Block, Brush, **35**  
Block, Cylinder, **7**  
Block, Terminal, **37**  
Boot, Battery Cable, **27**  
Bracket, Governor Actuator Mounting, **14**  
Bracket, Governor Adjust, **21**  
Bracket, Lifting, **22**  
Bracket, LP Converter, **17**  
Bracket, LP Gas/Natural Gas Solenoid, **18**  
Bracket, LP Liquid Solenoid, **19**  
Breaker, Circuit, **37**  
Brush, Generator, **35**  
Bushing, Piston Pin, **9**

Cable, Battery, **27**  
Cable, Spark Plug, **21**  
Camshaft, **8**  
Cap, Breather, **7**  
Cap, Oil Fill, **23**  
Cap, Starter Solenoid, **15**  
Capacitor, **16**  
Carburetor, **16**  
Cleaner, Air, **20**  
Clevis, Governor, **14**  
Clip, Air Intake Screen, **33**  
Clip, Fan Guard Push-On, **35**  
Coil, Ignition, **21**  
Components, Alternator Divider Panel, **31**  
Components, Engine Divider Panel, **33**  
Components, Housing Front Panel, **29**  
Components, Housing Rear Panel, **30**  
Components, Starter, **15**  
Connector, LP Liquid, **19**  
Control, **37**  
Control, Governor, **33**  
Control, Ignition, **13**  
Converter, LPG, **17**  
Coupling, LP Gas/Natural Gas Reducer, **18**  
Coupling, LP Liquid Fuel Anchor, **19**  
Cover, Air Cleaner, **20**  
Cover, Alternator Divider Panel, **31**  
Cover, Control, **37**  
Cover, Inner Air Cleaner, **20**  
Cover, Valve, **7**  
Crankshaft, **8**  
Cup, Governor, **8**  
Cup, Oil Pump Intake, **23**

Door, Access, **28**  
Duct, Alternator Divider Panel Rear Air, **31**  
Duct, Skid Base Air, **27**

Elbow, Carburetor Brass, **16**  
Elbow, LP Converter Brass, **17**  
Elbow, LP Gas/Natural Gas Brass, **18**  
Element, Air Cleaner, **20**  
Endbell, **35**

Fan, Generator, **35**  
Filter, Breather Tube, **7**  
Filter, Oil, **24**  
Flywheel, **11**  
Fuse, **37**

Gasket, Bearing Plate, **7**  
Gasket, Carburetor Mounting, **16**  
Gasket, Cylinder Head, **7**  
Gasket, Exhaust, **25**  
Gasket, Gearcase Mounting, **13**  
Gasket, Housing Front Door, **29**  
Gasket, Housing Rear Door, **30**  
Gasket, Manifold, **16**  
Gasket, Oil Base, **23**  
Gasket, Oil Base Plug, **23**  
Gasket, Oil Filter Adapter, **24**  
Gasket, Side Door, **28**  
Gasket, Valve Cover, **7**  
Gear, Camshaft, **8**  
Gear, Crankshaft, **8**  
Gear, Flywheel Ring, **11**  
Gearcase, **13**  
Generator, **35**  
Governor, Electronic, **14**  
Grommet, Blower Housing, **21**  
Grommet, Engine Divider, **33**  
Grommet, Generator Stator, **35**  
Grommet, LP Liquid Fuel System, **19**  
Guard, Generator Fan, **35**  
Guard, Stationary, **21**  
Guide, Valve, **7**

Harness, Alternator, **38**  
Harness, Control, **38**  
Harness, Engine, **38**  
Head, Cylinder, **7**  
Heater, Battery, **39**  
Holder, Fuse, **37**  
Hose, Air Cleaner Breather, **20**

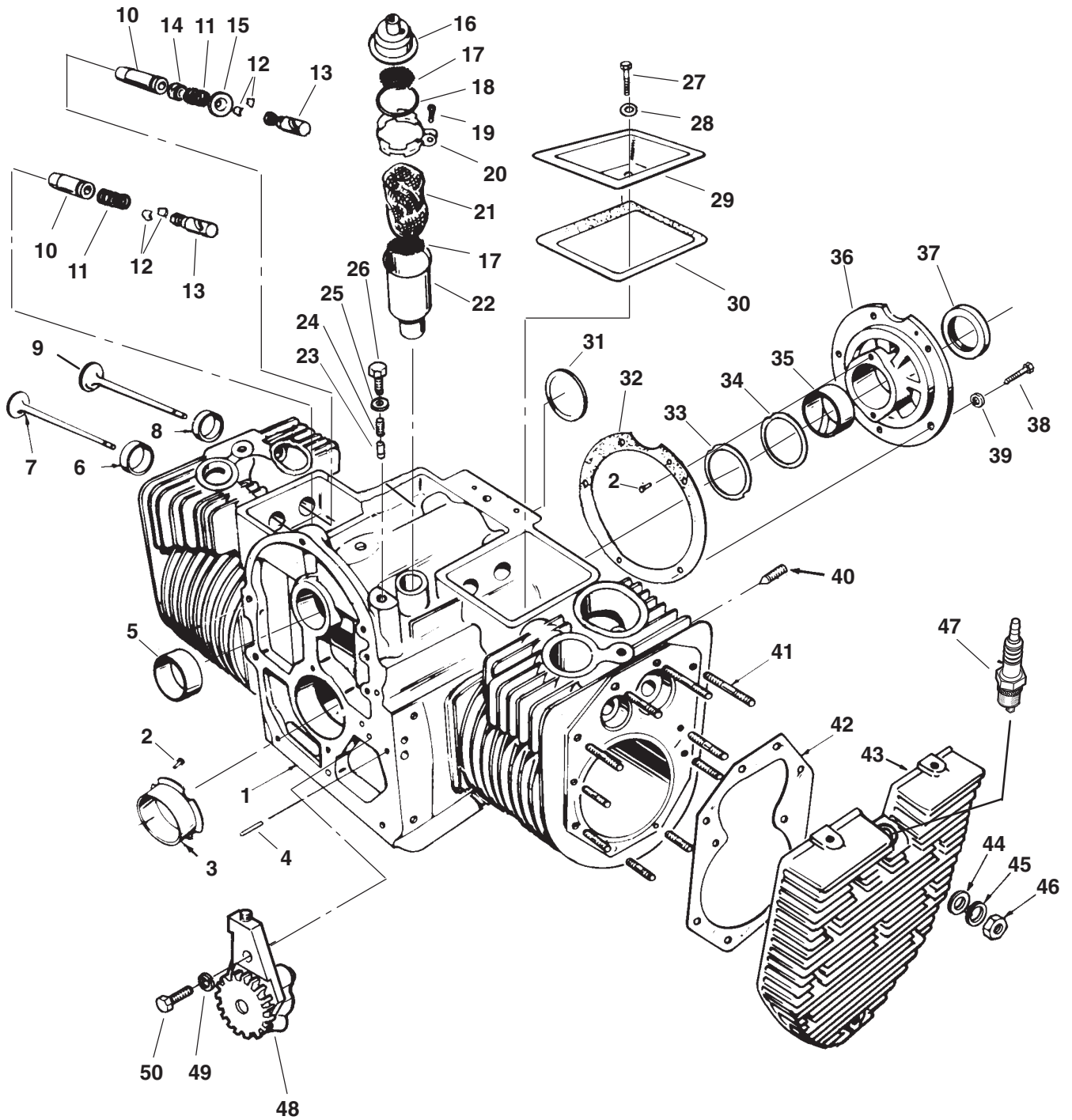
# Index

- Hose, Fuel, **16**
- Hose, LP Gas/Natural Gas Fuel, **18**
- Hose, Oil Drain, **23**
- Housing, **28**
- Housing, Air Cleaner, **20**
- Housing, Air Cylinder, **22**
- Housing, Blower, **21**
- Hub, Governor Cup, **8**
- Hub, Rotor, **35**
  
- Indicator, Oil Fill, **23**
- Insert, Valve Seat, **7**
- Insulation, Air Duct, **27, 31**
- Insulation, Alternator Divider, **31**
- Insulation, Door, **28**
- Insulation, Engine Divider, **33**
- Insulation, Heat Shield, **25**
- Insulation, Housing Front Access Panel, **29**
- Insulation, Housing Front Panel, **29**
- Insulation, Housing Rear Panel, **30**
- Insulation, Roof, **28**
- Insulator, Ignition Module, **13**
- Isolator, Vibration, **27**
  
- Joint, Governor Ball, **14**
- Jumper, Terminal Board, **37**
  
- Key, Camshaft Gear, **8**
- Key, Crankshaft Gear, **8**
- Key, Flywheel, **11**
- Kit, Battery Heater, **39**
- Kit, Complete Engine Gasket, **39**
- Kit, Cylinder Head Carbon Removal Gasket, **39**
- Kit, Gasket, **39**
- Kit, Insulation, **28**
- Kit, Oil Pump Gasket, **39**
- Kit, Piston/Ring, **9**
- Kit, Starter Brush, **15**
- Kit, Starter Bushing, **15**
- Kit, Starter Cap, **15**
- Kit, Starter Clutch, **15**
- Kit, Starter Dust Seal, **15**
- Kit, Starter Hardware, **15**
- Kit, Starter Mounting Bracket, **15**
- Kit, Starter Shift Lever, **15**
- Kit, Starter Solenoid, **15**
- Knob, Air Cleaner, **20**
  
- Labels, **39**
- Latch, Door, **28**
- Line, LP Liquid Fuel, **19**
- Linkage, Governor, **14**
- Lock, Valve Spring, **7**
- Louver, Housing, **29**
- Lug, Solderless, **37**
  
- Manifold, Intake, **16**
- Meter, Hour, **37**
- Muffler, **25**
  
- Nipple, LP Gas/Natural Gas Pipe, **18**
- Nipple, LP Liquid Pipe, **19**
  
- O'Ring, Endbell, **35**
- O'Ring, Oil Fill Cap Adapter, **23**
- Orifice, LPG Conversion, **18**
  
- Pallet, Shipping/Installation, **27**
- Panel, Alternator Divider, **28, 31**
- Panel, Control, **37**
- Panel, Engine Divider, **28, 33**
- Panel, Housing Front, **28, 29**
- Panel, Housing Front Access, **29**
- Panel, Housing Rear, **28, 30**
- Panel, Roof, **28**
- PCB, Control, **37**
- Pin, Camshaft Center, **8**
- Pin, Cylinder Block Bearing Stop, **7**
- Pin, Gearcase Alignment, **7**
- Pin, Governor Cup Stop Dowel, **13**
- Pin, Piston, **9**
- Piston, **9**
- Plate, Engine Mounting, **27**
- Plate, Rear Bearing, **7**
- Plug, Black Nylon Stationary Guard, **21**
- Plug, Cylinder Block Expansion, **7**
- Plug, Mounting Base Hole, **27**
- Plug, Oil Base, **23**
- Plug, Oil Drain Hose, **23**
- Plug, Spark, **7**
- Plunger, Bypass Valve, **7**
- Pump, Oil, **7**
  
- Regulator, LP Gas/Natural Gas, **18**
- Regulator, Voltage, **21**
- Ring, Camshaft Retaining, **8**
- Ring, Collector, **35**
- Ring, Gear Crankshaft Retaining, **8**
- Ring, Piston Retaining, **9**
- Rod, Connecting, **9**
- Rod, Governor, **14**
- Rotator, Valve, **7**
- Rotor, Generator, **35**
- Rotor, Ignition, **13**
  
- Screen, Air Intake, **33**
- Screen, Breather Tube, **7**
- Seal, Breather Cap O'Ring, **7**
- Seal, Crankshaft Oil, **7, 13**
- Seal, Governor Shaft Oil, **13**
- Seal, Intake Valve, **7**
- Seal, Oil Fill Cap Adapter, **23**
- Seal, Oil Fill Tube, **23**
- Set, Piston Ring, **9**
- Shaft, Governor, **13**
- Shield, Muffler Heat, **25**
- Shim, Crankshaft Thrust, **7**
- Solenoid, LP Gas/Natural Gas, **18**

## Index

Solenoid, LP Liquid, **19**  
Spacer, Air Cleaner, **20**  
Spacer, Muffler, **25**  
Spike, Base, **27**  
Spring, Bypass Valve, **7**  
Spring, Generator Brush, **35**  
Spring, Governor, **21**  
Spring, Valve, **7**  
Standoff, Insulator, **37**  
Starter, **15**  
Stator, Alternator, **13**  
Stator, Generator, **35**  
Strap, Battery, **27**  
Strap, Bond, **27**  
Strip, Marker, **37**  
Support, Air Cleaner, **20**  
Support, Alternator, **27**  
Switch, Oil Pressure, **24**  
Switch, Rocker, **37**  
Swivel, Governor Rod End, **14**  
Tappet, Valve, **7**  
Transformer, Voltage, **37**  
Tray, Battery, **27**  
Tray, Oil Filter Drip, **24**  
Tube, Air Intake, **20**  
Tube, Breather, **7**  
Tube, Oil Fill, **23**  
Valve, Breather, **7**  
Valve, Exhaust, **7**  
Valve, Intake, **7**  
Valve, LP Gas/Natural Gas Solenoid, **18**  
Valve, LP Liquid Solenoid, **19**  
Valve, Oil Drain, **23**  
Wrapper, Air Cleaner Element, **20**  
Yoke, Governor Shaft, **13**

# Cylinder Block

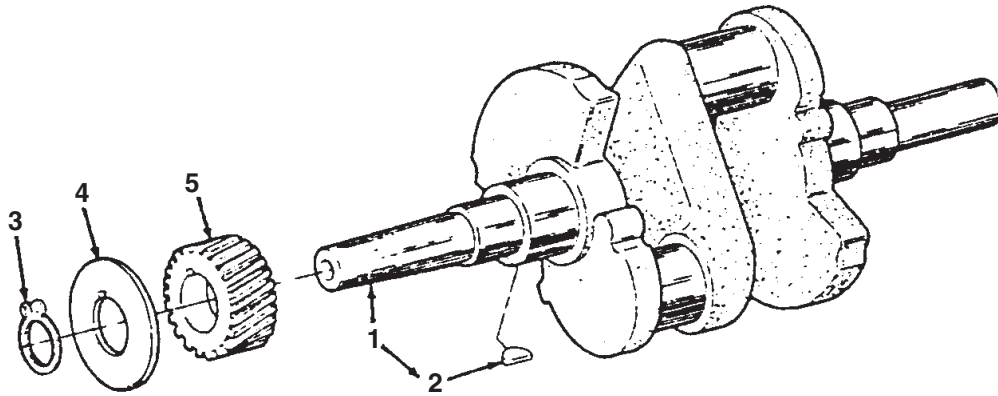




## Cylinder Block

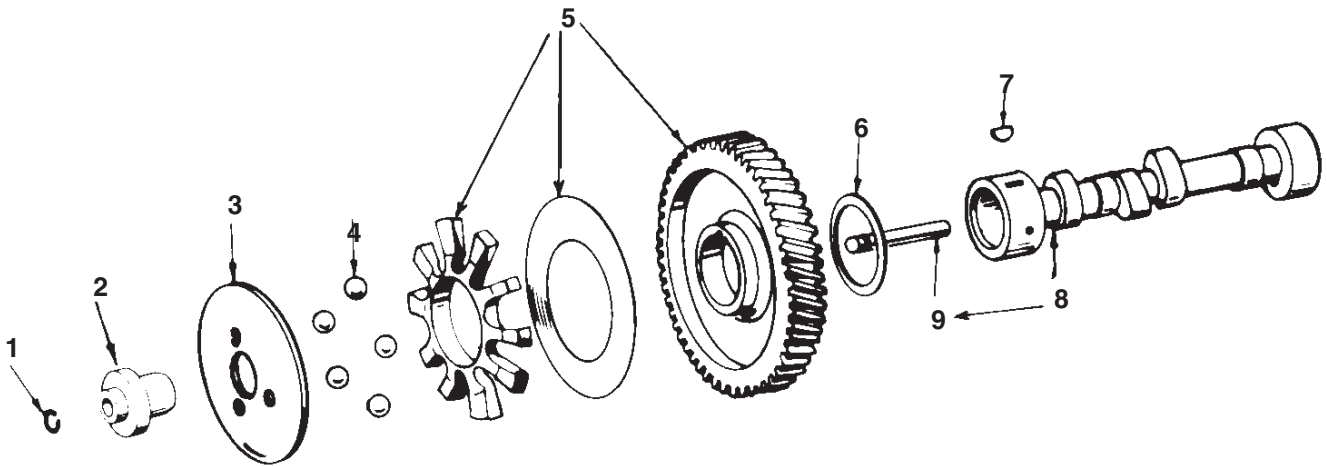
REF NO.	PART NO.	QTY USED	PART DESCRIPTION	REF NO.	PART NO.	QTY USED	PART DESCRIPTION
1		1	Block, Cylinder (See Short Block Catalog #932-0109)	27	800-0011	2	Screw, Hex Head Cap (1/4-20 x 2")
2	516-0072	4	Pin, Bearing Stop	28	526-0063	2	Washer, Copper Flat (1/4" Screw)
3			Bearing, Flanged Sleeve	29	110-1624-01	2	Cover, Valve
	101-0805	1	Standard	30	110-3575	2	Gasket, Valve Cover
	101-0805-02	1	.002" Undersize	31	517-0048-01	1	Plug, Expansion
	101-0805-10	1	.010" Undersize	32	101-0809	1	Gasket, Bearing Plate
	101-0805-20	1	.020" Undersize	33	104-0575	2	Washer, Crankshaft Bearing Thrust
	101-0805-30	1	.030" Undersize				Shim, Crankshaft Thrust (.005")
4	516-0141	2	Pin, Gearcase Alignment		104-0776-00	AR	.005" Thick
5	101-0391	2	Bearing, Camshaft		104-0776-01	AR	.003" Thick
6			Insert, Valve Seat - Exhaust	34			Bearing, Rear Crankshaft Standard
	110-1716	2	Standard		101-0804	1	.002" Undersize
	110-1716-02	2	.002" Oversize	35	101-0804-02	1	.010" Undersize
	110-1716-05	2	.005" Oversize		101-0804-10	1	.020" Undersize
	110-1716-10	2	.010" Oversize		101-0804-20	1	.030" Undersize
	110-1716-25	2	.025" Oversize	36	101-0793-02	1	Plate, Rear Bearing
	110-1719	2	Valve, Exhaust	37	509-0041	1	Seal, Crankshaft Oil (Rear)
7			Valve, Exhaust	38	800-0051	5	Screw, Hex Head Cap (3/8-16 x 1-1/4")
8			Insert, Valve Seat - Intake (Zinc Plated)	39	526-0402	5	Washer, Flat (3/8")
	110-3655	2	Standard	40	803-0071	4	Screw, Socket Set (3/8-16 x 5/8")
	110-3655-02	2	.002" Oversize	41			Stud, Cylinder Head Mounting
	110-3655-05	2	.005" Oversize		520-0919	8	3/8 x 2-19/32" (Install 4 in Bottom Holes - RH, LH Heads)
	110-3655-10	2	.010" Oversize				3/8 x 2-3/4" (Install 2 Top Holes - RH, LH Heads)
	110-3655-25	2	.025" Oversize		520-0918	8	3/8 x 3" (Install 4 Middle Holes - RH, LH Heads)
9	110-1718	2	Valve, Intake	42	110-2987	2	Gasket, Cylinder Head
10			Guide, Valve	43	110-3549	2	Head, Cylinder
	110-3167	2	Exhaust	44	526-0250	20	Washer, Heat Treated Flat (3/8")
	110-3168	2	Intake	45	851-0029	24	Washer, Compression
11	110-0539	4	Spring, Valve	46	104-0091	20	Nut, Hex
12	110-0639	8	Lock, Valve Spring	47	167-0272	2	Plug, Spark
13	115-0006	4	Tappet, Valve	48	120-1275-02	1	Pump, Oil (Components Not Sold Separately)
14	110-3604	2	Seal, Intake Valve	49	740-1004	2	Washer, Flat (1/4")
15	110-0904	4	Rotator, Valve	50	800-0007	2	Screw, Hex Head Cap (1/4-20 x 1")
16	123-0954	1	Cap and Valve, Breather				
17	123-0958	2	Screen, Breather Tube				
18	509-0117	1	Seal, O'Ring				
19	809-0035	1	Screw, Breather Clamp (#8 x 3/4")				
20	123-0951	1	Clamp, Loop				
21	123-1417	1	Filter, Breather Tube				
22	123-0952	1	Tube, Breather				
23	120-0398	1	Plunger, Bypass Valve				
24	120-0140	1	Spring, Bypass Valve				
25	526-0066	1	Washer, Copper Flat (3/8" Screw)				
26	801-0050	1	Screw, Hex Head Cap (3/8-24 x 1")				

## Crankshaft



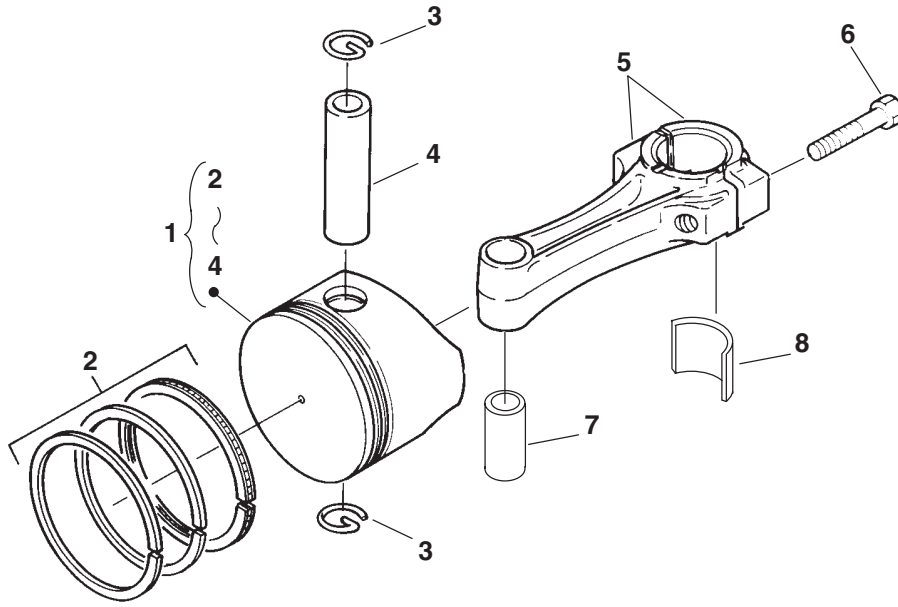
REF NO.	PART NO.	QTY USED	PART DESCRIPTION	REF NO.	PART NO.	QTY USED	PART DESCRIPTION
1	104-1966	1	Crankshaft (Includes Key)	4	104-0043	1	Washer, Gear Retaining
2	515-0001	1	Key, Crankshaft Gear	5	104-1808	1	Gear, Crankshaft
3	518-0014	1	Ring, Retaining				

## Camshaft



REF NO.	PART NO.	QTY USED	PART DESCRIPTION	REF NO.	PART NO.	QTY USED	PART DESCRIPTION
1	150-0078	1	Ring, Retaining	6	105-0541	1	Washer, Thrust
2	150-1519	1	Hub, Governor Cup	7	515-0001	1	Key, Camshaft Gear Woodruff
3	150-1520	1	Cup, Governor	8	105-0594	1	Camshaft (Includes Center Pin)
4	510-0015	5	Ball, Governor	9	150-0075	1	Pin, Center
5	105-0700	1	Gear, Camshaft (Includes Gear, Spacer and Plate)				

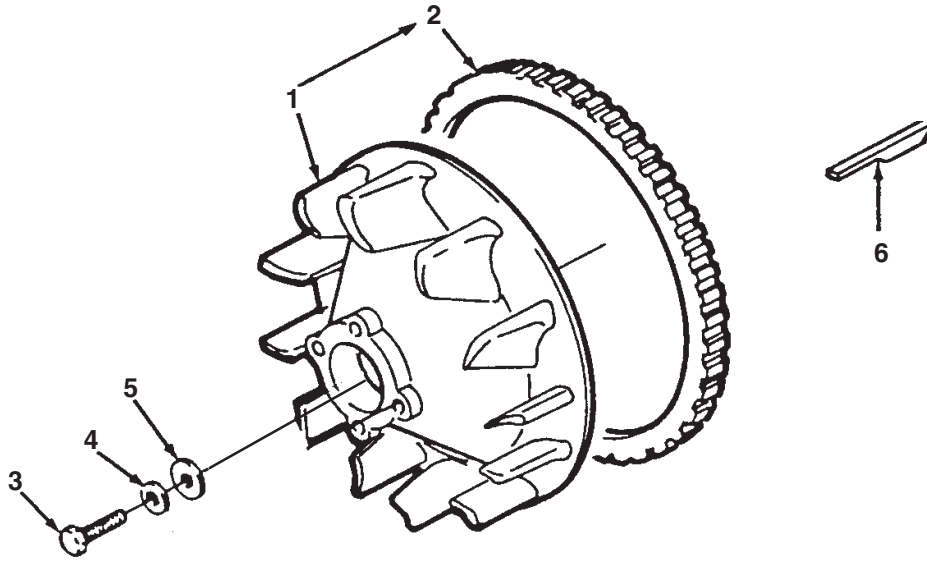
# Piston



REF NO.	PART NO.	QTY USED	PART DESCRIPTION	REF NO.	PART NO.	QTY USED	PART DESCRIPTION
1			Kit, Piston/Ring (Includes Piston, Ring Set, Retaining Rings and Pin)	3	112-0267	4	Ring, Retaining
	112-0265	2	Standard	4	112-0268	2	Pin, Piston
	112-0265-05	2	.005" Oversize	5	114-0203	2	Rod, Connecting (Includes Bolt and Bushing)
	112-0265-01	2	.010" Oversize	6	805-0010	4	Bolt, Connecting Rod
	112-0265-02	2	.020" Oversize	7	114-0036	2	Bushing, Piston Pin
	112-0265-03	2	.030" Oversize	8			Bearing, Connecting Rod Half
2			Set, Piston Ring		114-0188	4	Standard
	113-0311	2	Standard		114-0188-02	4	.002" Undersize
	113-0311-05	2	.005" Oversize		114-0188-10	4	.010" Undersize
	113-0311-01	2	.010" Oversize		114-0188-20	4	.020" Undersize
	113-0311-02	2	.020" Oversize		114-0188-30	4	.030" Undersize
	113-0311-03	2	.030" Oversize				

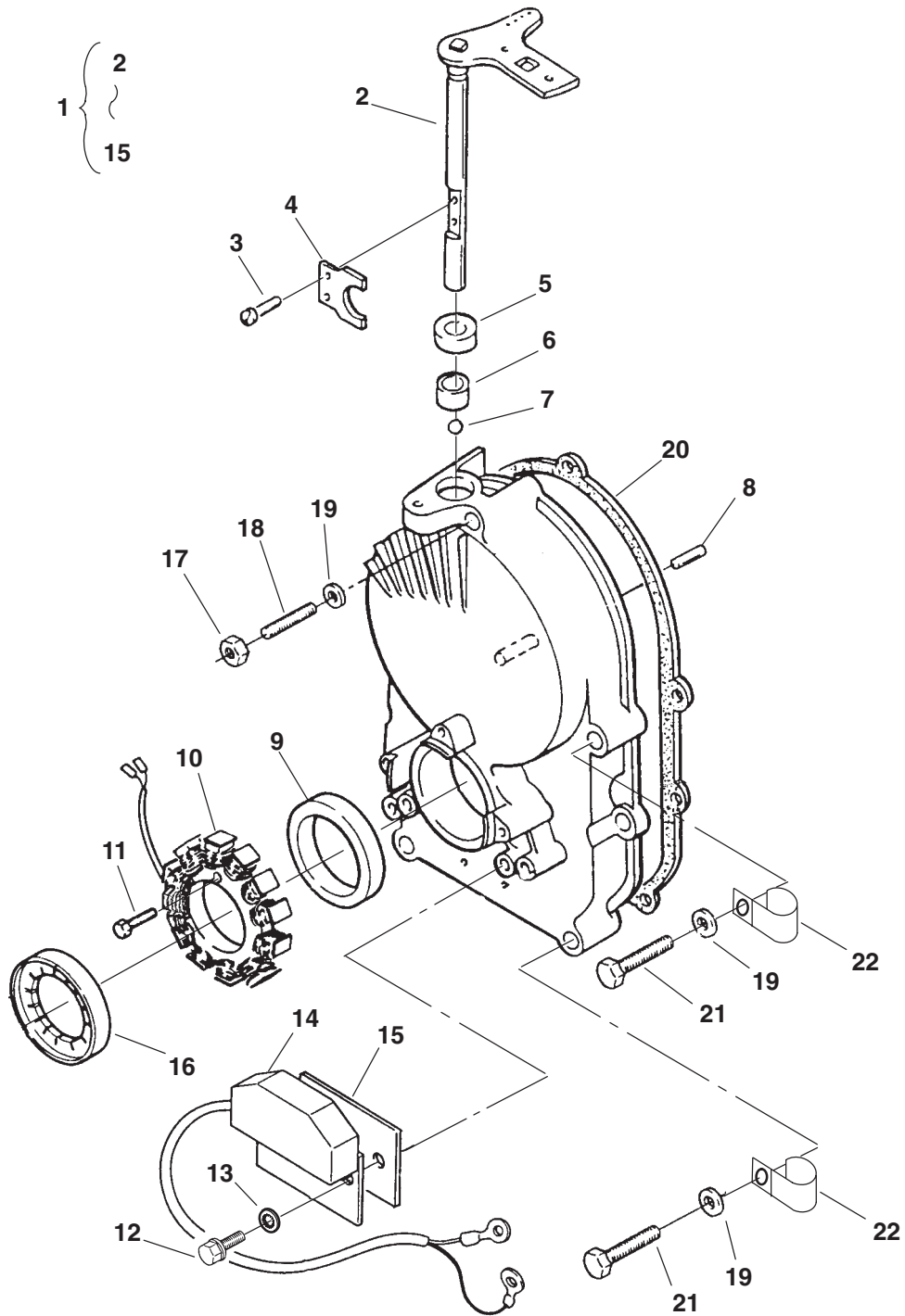


## Flywheel



REF NO.	PART NO.	QTY USED	PART DESCRIPTION	REF NO.	PART NO.	QTY USED	PART DESCRIPTION
1	134-4680	1	Flywheel (Includes Ring Gear)	4	526-0356	1	Washer, Flat (7/16" Screw)
2	104-0779	1	Gear, Ring	5	526-0017	1	Washer, Flat (7/16" Screw)
3	104-0170	1	Screw, Hex Head Cap	6	515-0284	1	Key, Flywheel

# Gearcase

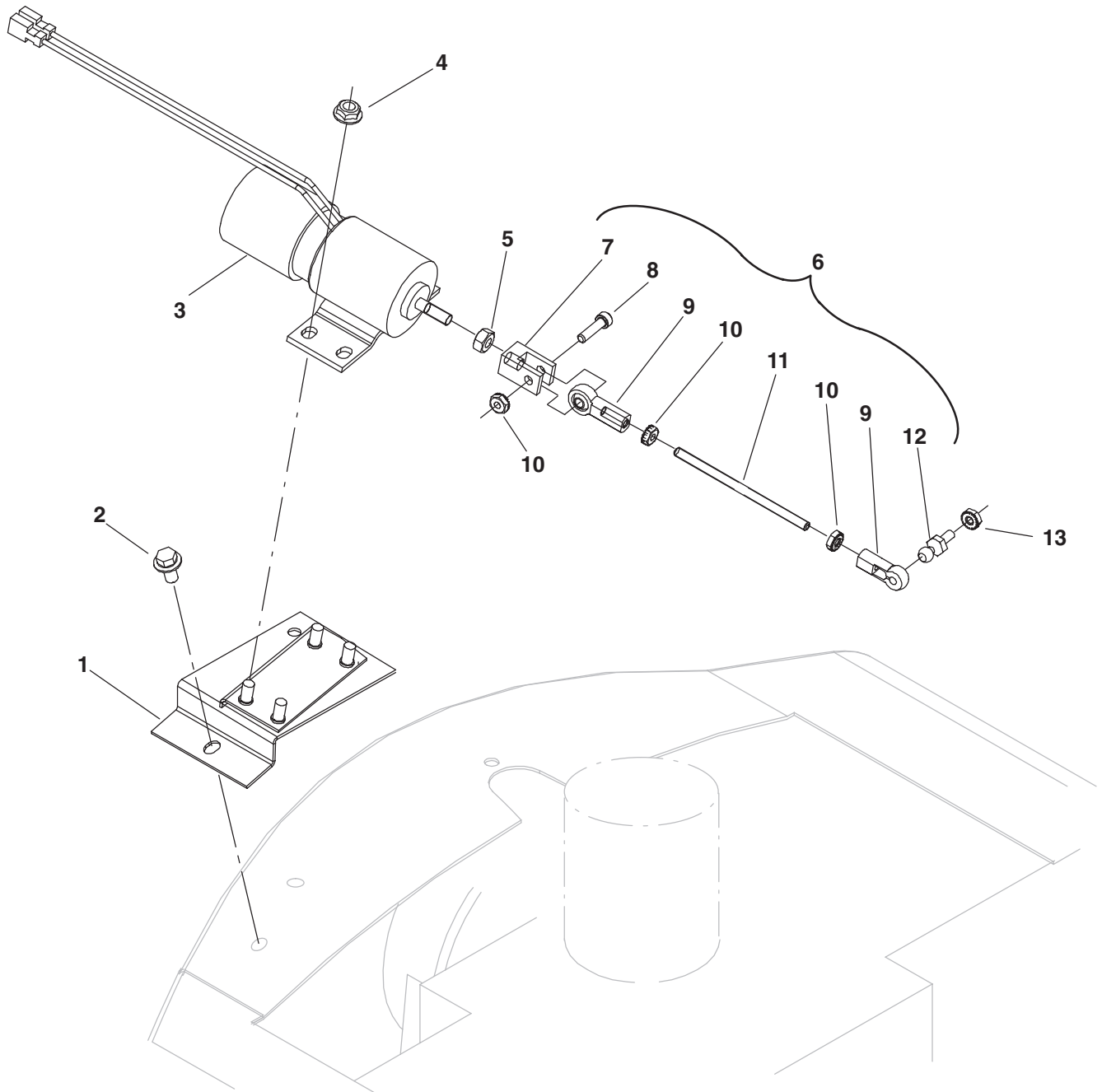


## Gearcase

REF NO.	PART NO.	QTY USED	PART DESCRIPTION	REF NO.	PART NO.	QTY USED	PART DESCRIPTION
1	103-0787-24	1	Kit, Gearcase (Includes Parts Marked *)	12	815-0340	2	*Screw, Hex Washer Head (10-32 x 3/8")
2	150-1470-01	1	*Shaft And Arm, Governor (See Drawing 539-1997 for Replacement Information)	13	854-0010	2	*Washer, IT Lock (#10)
3	815-0046	2	*Screw, Pan Head Machine (8-32 x 3/8")	14	166-0785	1	*Control, Ignition
4	150-1187	1	*Yoke, Governor Shaft	15	166-0786	1	*Insulator, Ignition Module
5	509-0008	1	*Seal, Governor Shaft Oil	16	166-0767	1	Rotor, Ignition
6	510-0105	1	*Bearing, Governor Shaft	17	862-0015	1	Nut, Hex (5/16-18)
7	510-0014	1	*Ball, Governor Shaft Bearing	18	520-0933	1	Stud, Gear Cover
8	516-0130	1	*Pin, Governor Cup Stop Dowel	19	526-0065	5	Washer, Copper Flat (5/16")
9	509-0040	1	*Seal, Crankshaft, Front Oil	20	103-0810	1	Gasket, Gearcase Mounting
10	191-1456	1	*Stator, Alternator (20A) (Includes Leads/Terminals)	21	800-0032-01	4	Screw, Hex Head Cap (5/16-18 x 1-3/4")
11	815-0659	3	*Screw, Hex Head Machine Self-Lock (#10-32 x 1")	22	518-0515	2	Clip, Wire

\* - Parts Included in Gearcase Kit.

## Electronic Governor

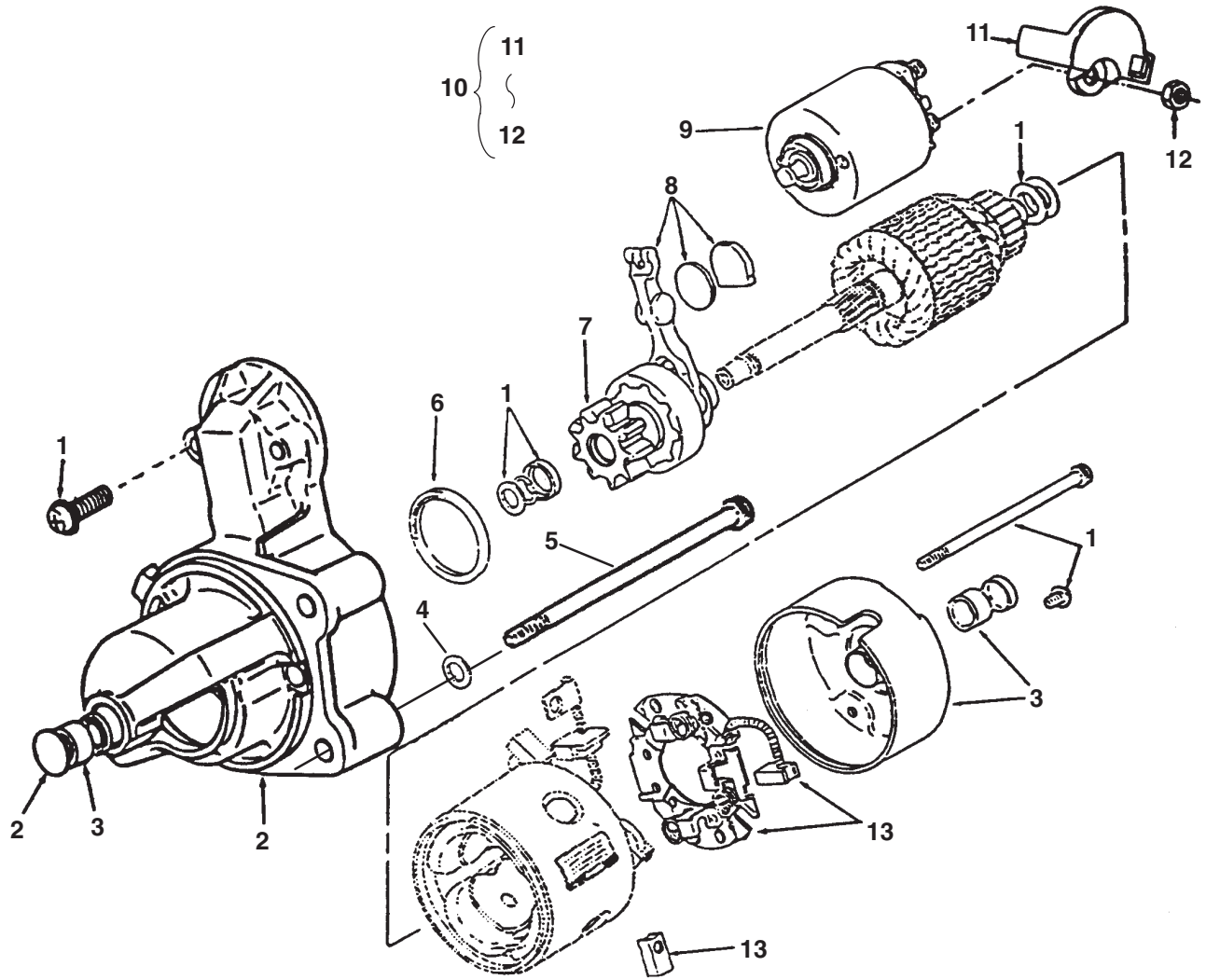


REF NO.	PART NO.	QTY USED	PART DESCRIPTION	REF NO.	PART NO.	QTY USED	PART DESCRIPTION
1	403-4363-04	1	Bracket, Actuator Mounting	8	804-0019	1	*Screw, Socket Head (10-32 x 3/4")
2	821-0010	2	Screw, Lock Head (1/4-20 x 1/2")	9	151-0769	1	*Swivel, Governor Rod End
3	151-0763	1	Actuator, Governor	10	870-0131	3	*Nut, ET Hex (#10-32)
4	870-0212	4	Nut, Hex Head Cap Whiz Lok (1/4-20)	11	151-0766	1	*Rod, Governor
5	115-0025	1	Nut, Hex (1/4-28)	12	150-0939	1	*Joint, Ball
6	151-0765	1	Linkage, Governor (Includes Parts Marked *)	13	870-0131	1	Nut, ET Hex (#10-32)
7	151-0768	1	*Clevis, Governor				

\* - Parts Included in Governor Linkage.

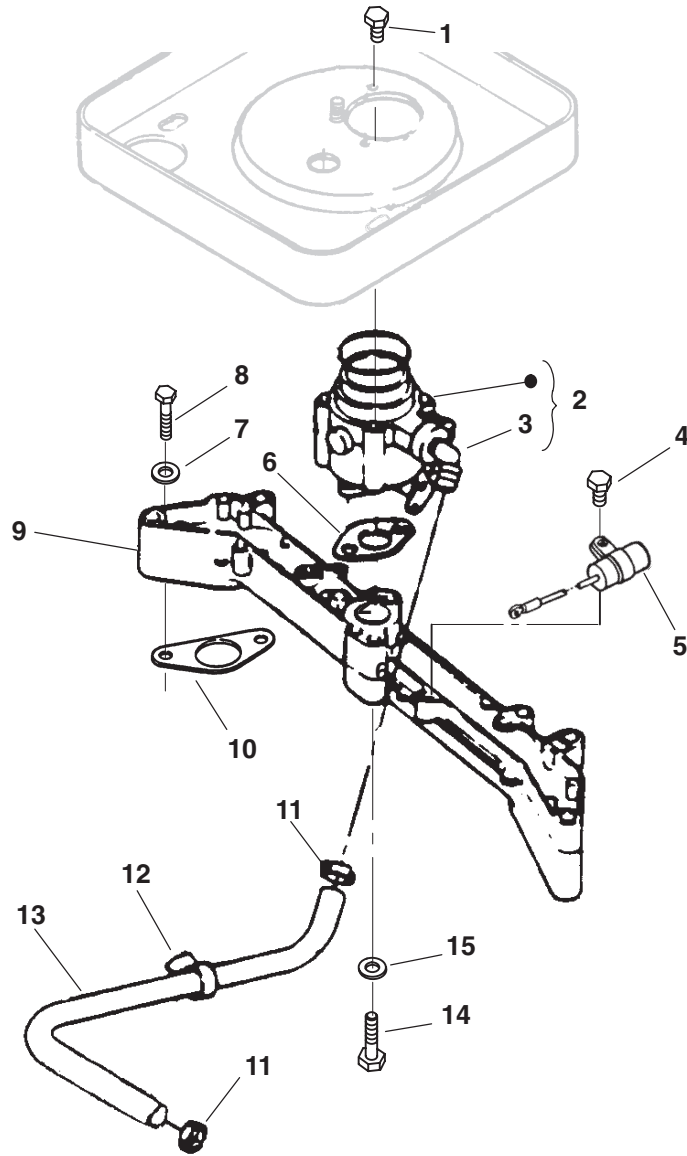


## Starter Components



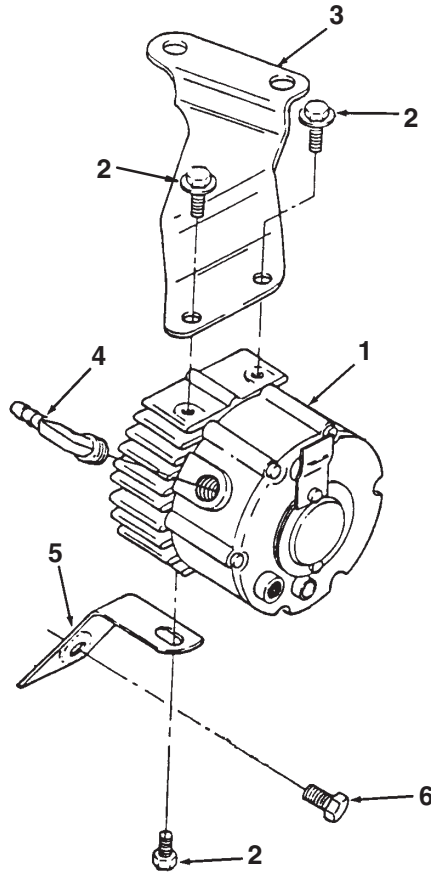
REF NO.	PART NO.	QTY USED	PART DESCRIPTION	REF NO.	PART NO.	QTY USED	PART DESCRIPTION
	191-1949-04	1	Starter	6	191-1955	1	Kit, Dust Seal (Includes ID, OD Pinion Seals)
1	191-1954	1	Kit, Hardware (Includes (2) Solenoid Mtg Screws, 2 Thru Bolts, Armature Shims, Pinion Stop Collar, Retaining Ring and Solenoid Terminal Nuts)	7	191-1953	1	Kit, Clutch (Includes Pinion Gear, Clutch Assy & #8)
2	191-1950	1	Kit, Mounting Bracket (Includes Front Bracket, Front Bushing, Dust Seal, Thrust Washer, Cap Plug and OD Pinion Seal)	8	191-1766	1	Kit, Shift Lever (Includes Lever, Wear Plate, Rubber Plug and Grease)
3	191-1931	1	Kit, Bushing (Includes Rear Cap with Bushing and Front Bushing)	9	191-1956	1	Kit, Solenoid (Includes Solenoid and Spring Plunger)
4	526-0122	2	Washer, Flat (5/16")	10	541-0411	1	Kit, Starter Cap (Includes Cap and Nut)
5	800-0595	2	Screw, Hex Head Cap (5/16"-18 x 3-1/2")	11	191-1947	1	Cap, Starter Solenoid
				12	750-1006	1	Nut, Hex Metric (M8)
				13	191-1951	1	Kit, Starter Brush (Includes (2) Negative and (2) Positive Brushes and Brush Holder)

## Carburetor



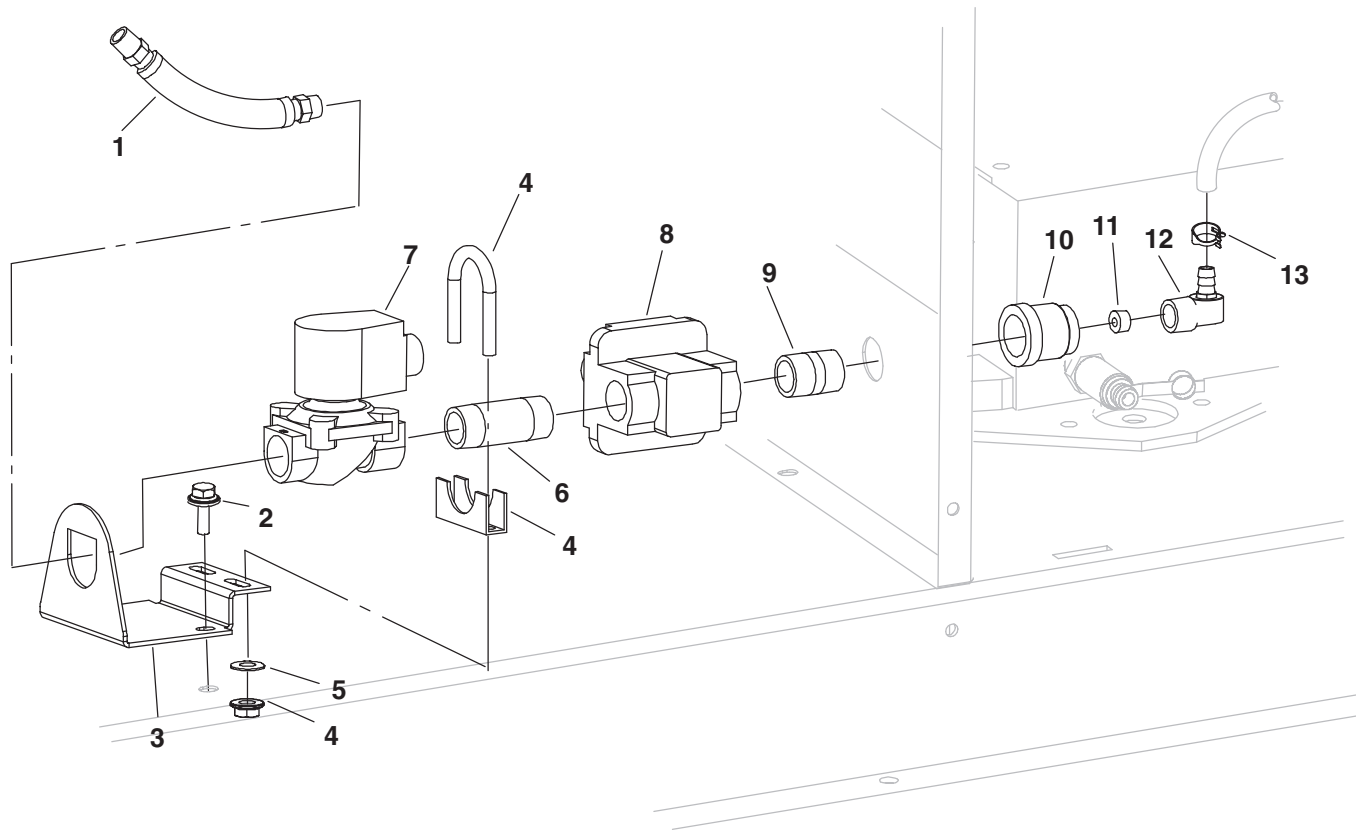
REF NO.	PART NO.	QTY USED	PART DESCRIPTION	REF NO.	PART NO.	QTY USED	PART DESCRIPTION
1	815-0463	3	Screw, Hex Washer Head Slotted (10-32 x 3/8")	8			Screw, Hex Head Cap 3/8-16 x 3"
2			Carburetor (Includes Elbow) (Without Mounting Gaskets)	800-0058		2	3/8-16 x 3"
	146-0681	1	LP Liquid	800-0036		2	5/16-18 x 2-3/4"
	146-0776	1	LP Vapor/Natural Gas	9	154-2873	1	Manifold, Intake
3	502-1146	1	Elbow, 45° Brass (Included with Carburetor)	10	154-2219	2	Gasket, Manifold
4	815-0261	1	Screw, Hex Washer Head (1/4-20 x 1/2")	11			Clamp, Hose Vapor Units
5	312-0256	1	Capacitor	503-1133		1	Vapor Units
6	154-0733	1	Gasket, Carburetor Mounting Washer, Flat	503-1133		2	Liquid LP Units
	526-0251	2	3/8"	12			Clamp, Loop Vapor Units
	526-0122	2	5/16"	332-1356		1	Vapor Units
				332-1356		1	Liquid LP Units
				13	503-1880-01	1	Hose, Fuel (3/8" ID x 27" Long)
				14	800-0035	2	Screw, Hex Head Cap (5/16-18 x 2-1/2")
				15	526-0122	2	Washer, Flat (5/16")

## LPG Converter



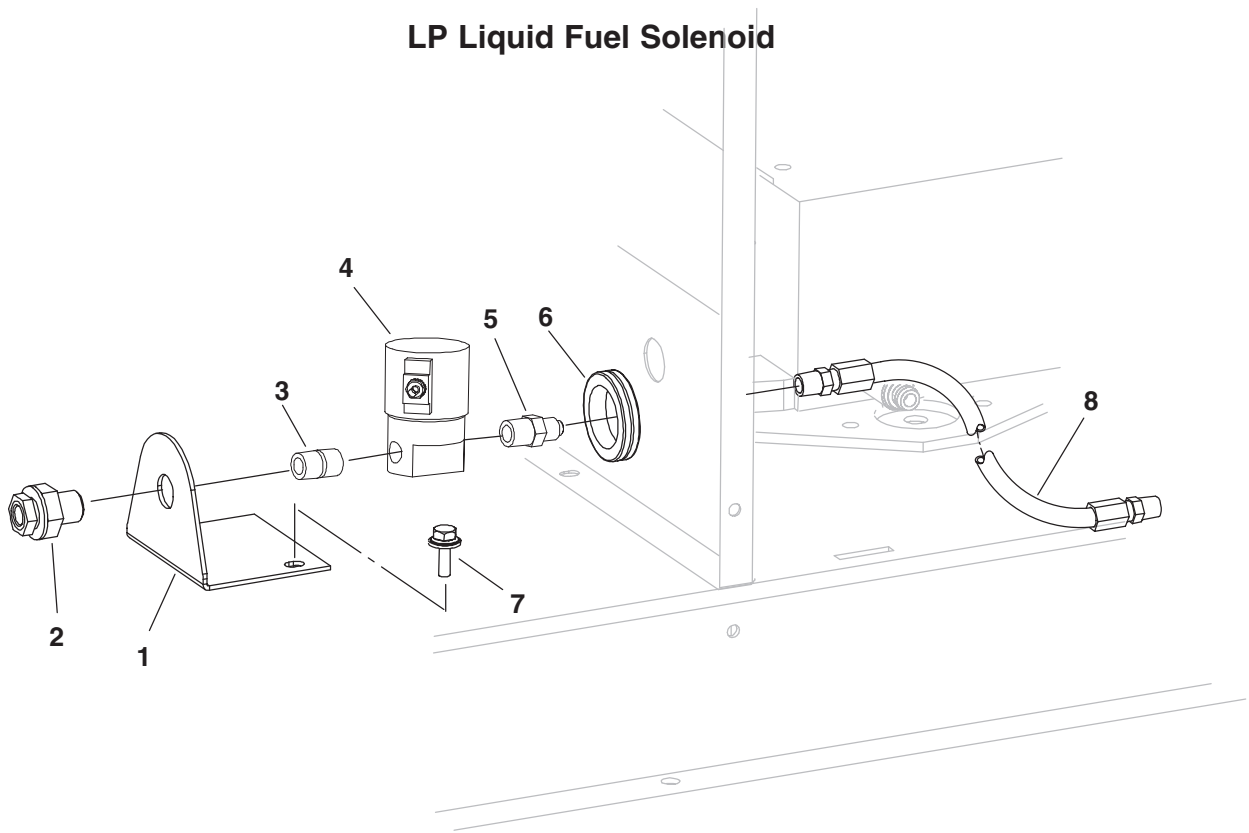
REF NO.	PART NO.	QTY USED	PART DESCRIPTION	REF NO.	PART NO.	QTY USED	PART DESCRIPTION
1	148-1025	1	Converter, LPG	5	148-0976	1	Bracket, Lower
2	821-0018	3	Screw, Hex Head Cap (1/4-20 x 5/8")	6	815-0293	1	Screw, Hex Washer Head Thread Forming (1/4-20 x 3/4")
3	148-0975	1	Bracket, Upper				
4	502-1145	1	Elbow, 90° Brass (1/2"NPT - 3/8 Barb)				

## LPG/Natural Gas Solenoid



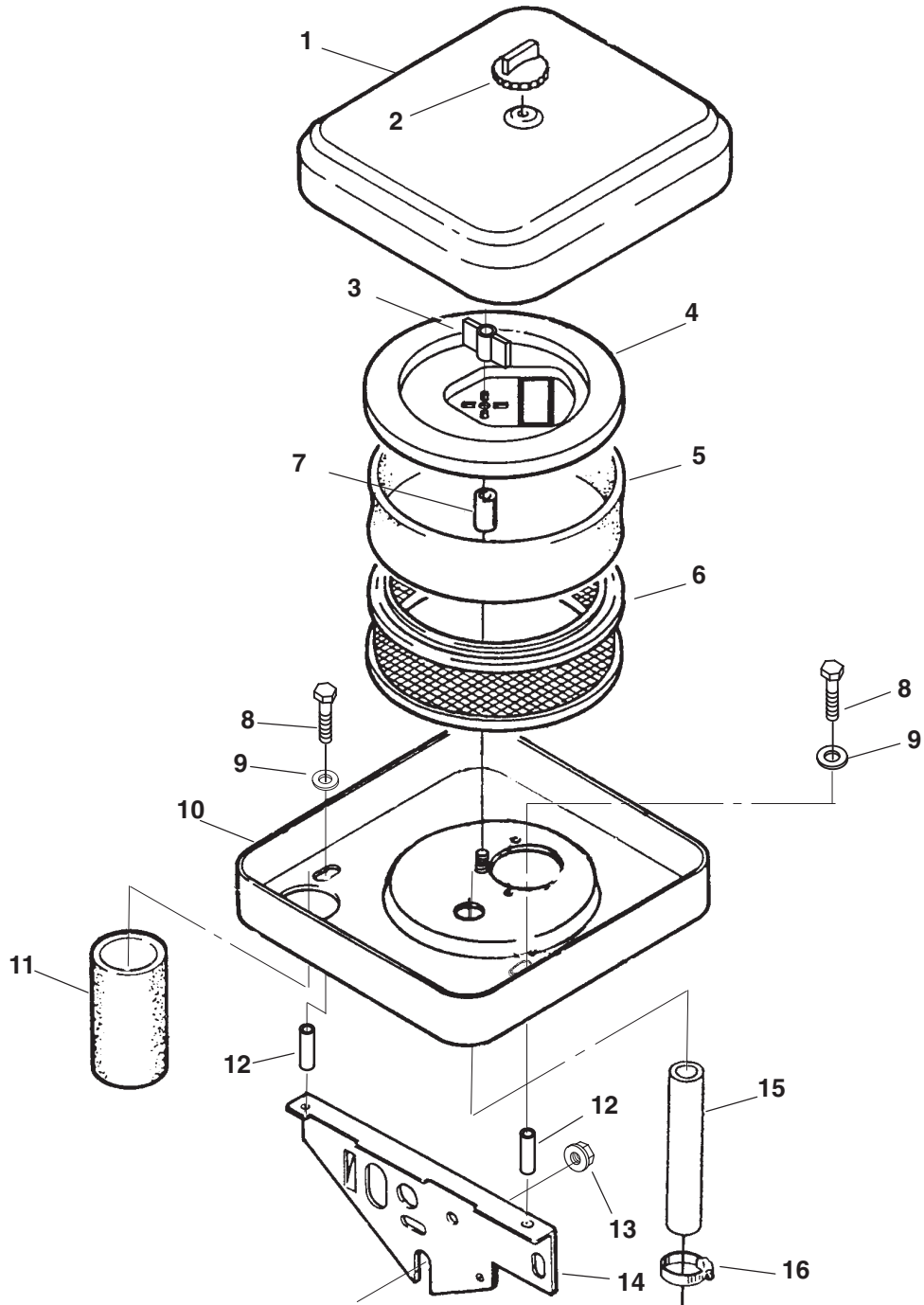
REF NO.	PART NO.	QTY USED	PART DESCRIPTION	REF NO.	PART NO.	QTY USED	PART DESCRIPTION
1	501-0648	1	Hose Assy, Fuel	8	148-0597	1	Regulator, Natural Gas
2	821-6003-02	1	Screw, Hex Head Sems (M8 x 1.25 x 20mm)	9	505-0102	1	Nipple, Pipe (3/4 NPT x 1.38)
3	179-0836-02	1	Bracket, Solenoid	10	505-0307	1	Coupling, Reducer (3/4 x 1/2 NPT)
4	155-1256	1	Clamp, Muffler (Includes Nuts)	11	146-0779	1	Orifice, LPG Conversion
5	526-2100	2	Washer, Flat (M8)	12	502-1145	1	Elbow, 90 Brass (1/2 x 3/8)
6	505-0084	1	Nipple, Pipe (3/4 NPT x 2.5")	13	503-1133	1	Clamp, Hose
7	307-2930	1	Valve, Solenoid				

## LP Liquid Fuel Solenoid



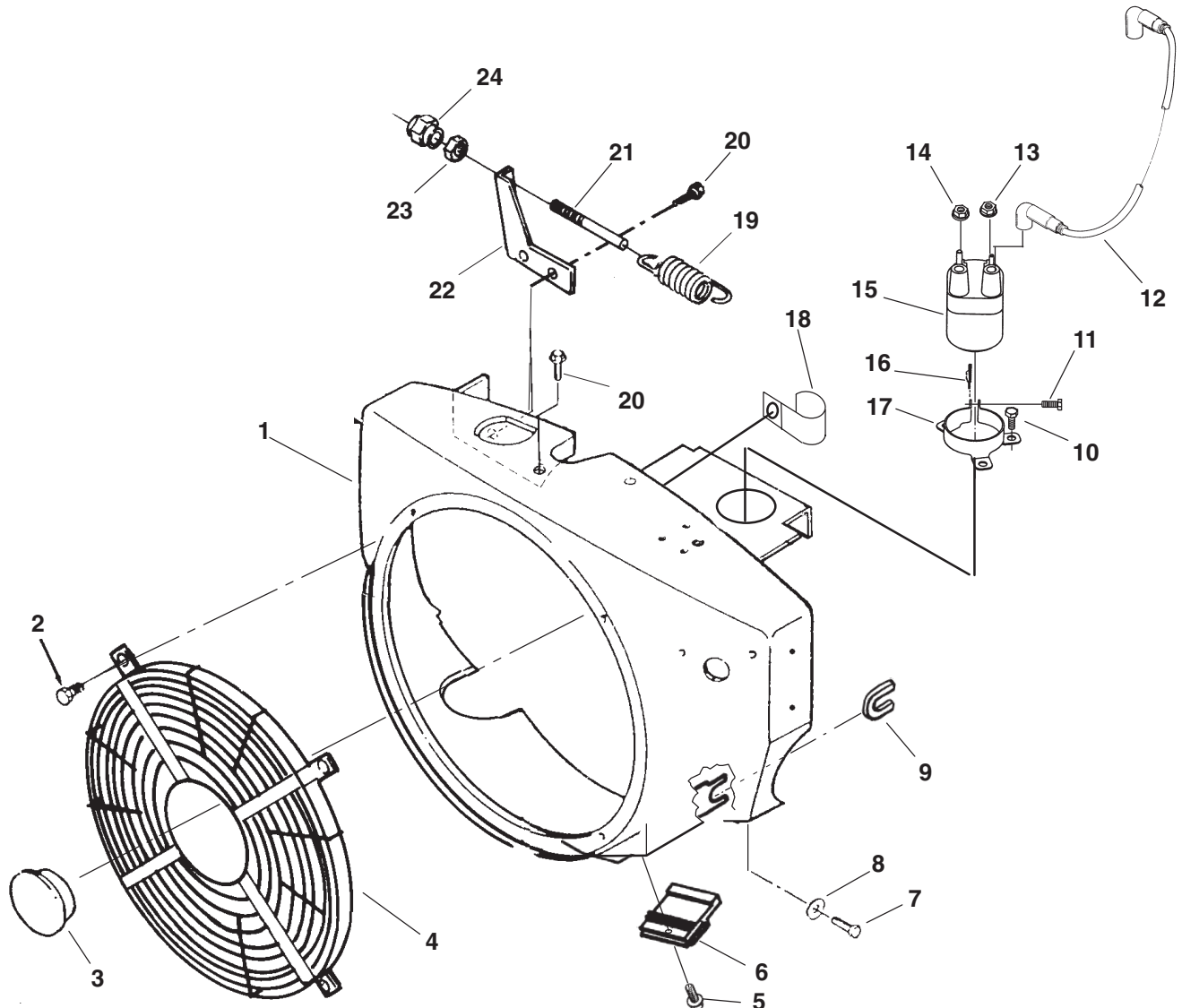
REF NO.	PART NO.	QTY USED	PART DESCRIPTION	REF NO.	PART NO.	QTY USED	PART DESCRIPTION
1	179-0837-02	1	Bracket, Solenoid	6	508-0055	1	Grommet (1-1/2")
2	505-1560	1	Coupling, Anchor	7	821-6003-02	1	Screw, Hex Head Sems (M8 x 1.25 x 20mm)
3	505-0099	1	Nipple, Pipe (1/4 NPT)	8	501-0684	1	Line, Fuel
4	307-0268-01	1	Valve, Solenoid				
5	502-0184	1	Connector				

## Air Cleaner



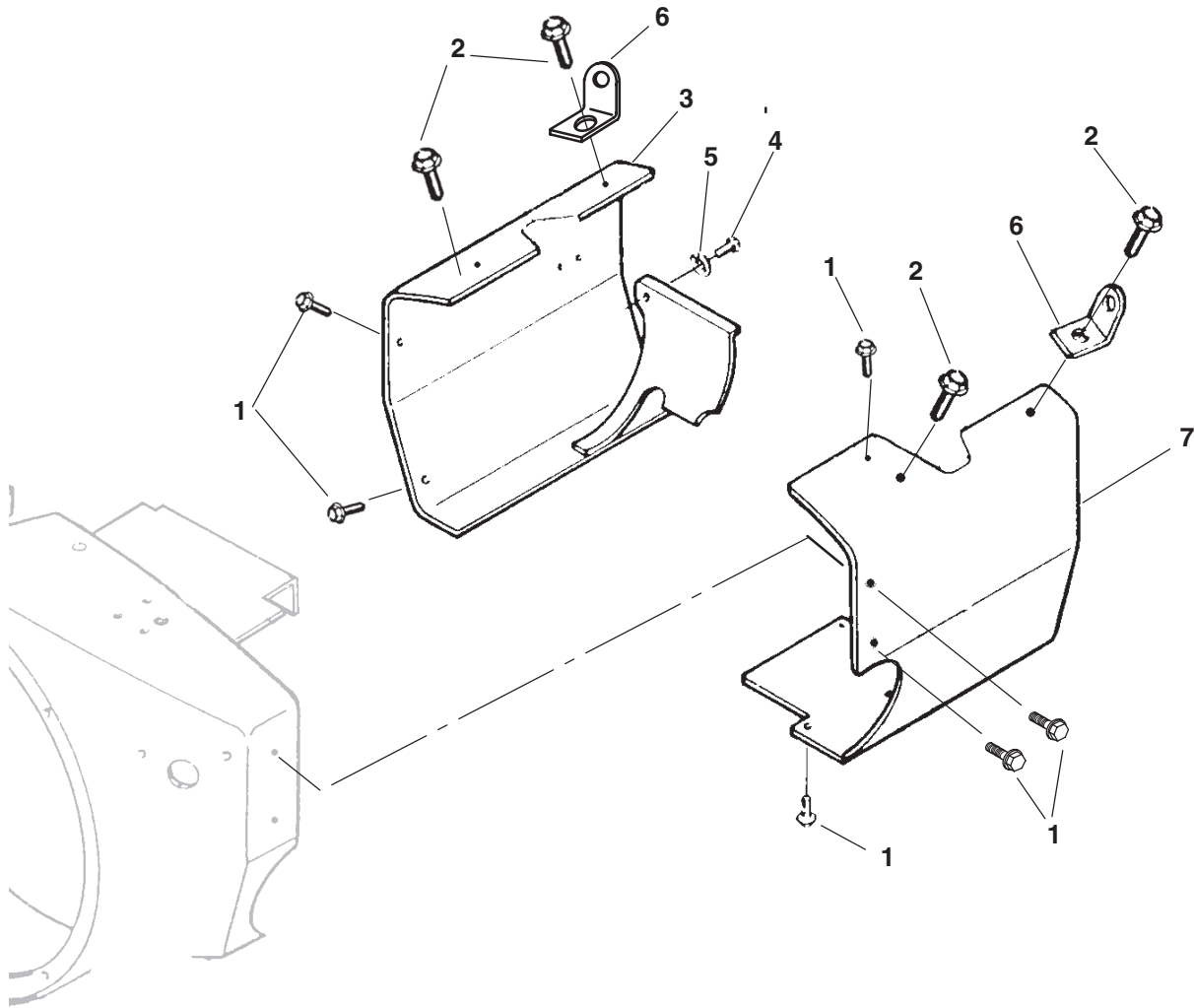
REF NO.	PART NO.	QTY USED	PART DESCRIPTION	REF NO.	PART NO.	QTY USED	PART DESCRIPTION
1	140-2005-50	1	Cover, Air Cleaner	9	526-0018	2	Washer, Flat (1/4")
2	140-2761	1	Knob, Tool-Less	10	140-2493-53	1	Housing, Air Cleaner
3	140-2786	1	Nut, Wing (1/4-20)	11	503-1882-03	1	Tube, Air Intake (5.12" Long)
4	140-2942	1	Cover, Inner Tool-Less	12	140-2722-01	2	Spacer, Air Cleaner
5	140-1496	1	Wrapper, Air Cleaner Element	13	870-0399	1	Nut, Hex Washer Head Flanged (5/16-18)
6	140-2628-01	1	Element, Air Cleaner	14	140-2191-50	1	Support, Air Cleaner
7	140-2536-01	1	Spacer, Air Cleaner Stud (1")	15	503-1606-03	1	Hose, Breather
8	821-0013	2	Screw, Hex Head Cap (1/4-20 x 1)	16	503-1336	1	Clamp, Hose

# Blower Housing



REF NO.	PART NO.	QTY USED	PART DESCRIPTION	REF NO.	PART NO.	QTY USED	PART DESCRIPTION
1	134-5127-02	1	Housing, Blower	13	166-0771	1	Nut, Hex Flange (M5 x 0.8 Negative Terminal)
2	815-0721	4	Screw, Pan Head (10-32 x 1)	14	166-0770	1	Nut, Hex Flange (M4 x 0.7 Positive Terminal)
3	517-0136	1	Plug, Black Nylon	15	166-0820	1	Coil, Ignition
4	134-4689	1	Guard, Stationary	16	518-0574	1	Clip
5	815-0261	1	Screw, Hex Washer Head Cap (1/4-20 x 1/2")	17	134-5130-02	1	Clamp, Coil Mounting
6	191-2208	1	Regulator, Voltage (20A) (VR2)	18	518-0515	1	Clip, Wire
7	815-0337	2	Screw, Hex Washer Head Tapping (1/4-20 x 1/2")	19	150-2750	1	Spring, Governor
8	526-0018	2	Washer, Flat (1/4")	20	821-0010	3	Screw, Lock Head (1/4-20 x 1/2")
9	508-0331	1	Grommet, Rubber	21	150-0694	1	Stud, Adjusting
10	815-0261	3	Screw, Hex Washer Head Thread Forming (1/4-20 x 1/2")	22	150-2264	1	Bracket, Governor Adjust
11	821-0018	1	Screw, Hex Lock (1/4-20 x 5/8")	23	870-0131	1	Nut, Governor Adjusting ET Hex (#10-32)
12			Cable, Spark Plug	24	150-0621	1	Nut, Governor Acorn
	167-1615-01	1	9"				
	167-1615-04	1	19"				

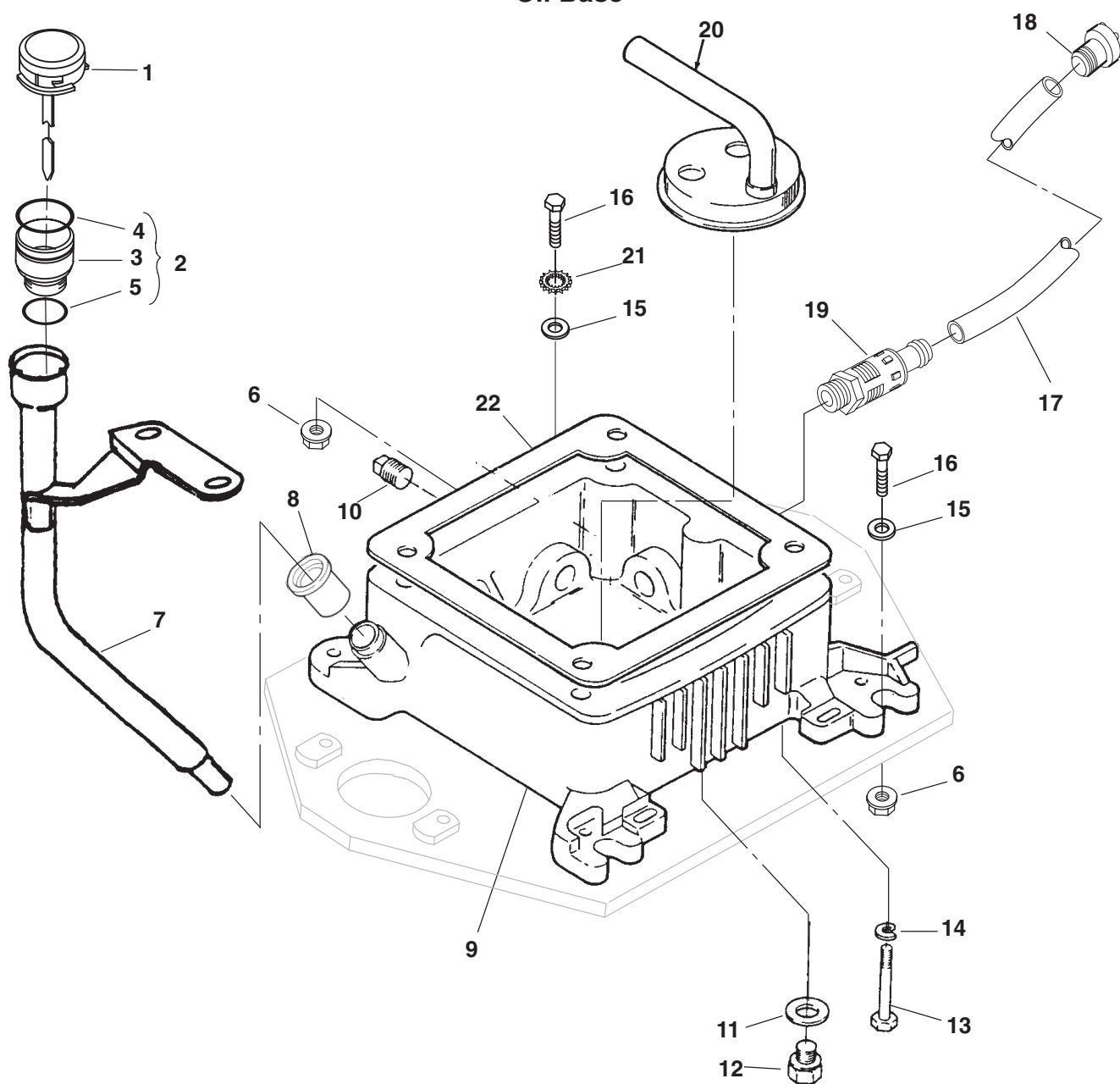
## Air Cylinder Housing



REF NO.	PART NO.	QTY USED	PART DESCRIPTION	REF NO.	PART NO.	QTY USED	PART DESCRIPTION
1	821-0008	6	Screw, Hex Washer Head Cap (1/4-20 x 5/16")	4	815-0290	2	Screw, Hex Washer Head Tapping (1/4-20 x 5/8")
2	815-0508	4	Screw, Hex Washer Cap Head (5/16-18 x 3/4")	5	526-0021	2	Washer, Flat (1/4")
3	134-4668-50	1	Housing, Cylinder Air - LH	6	403-4202-02	2	Bracket, Lifting
				7	134-4846-50	1	Housing, Cylinder Air - RH



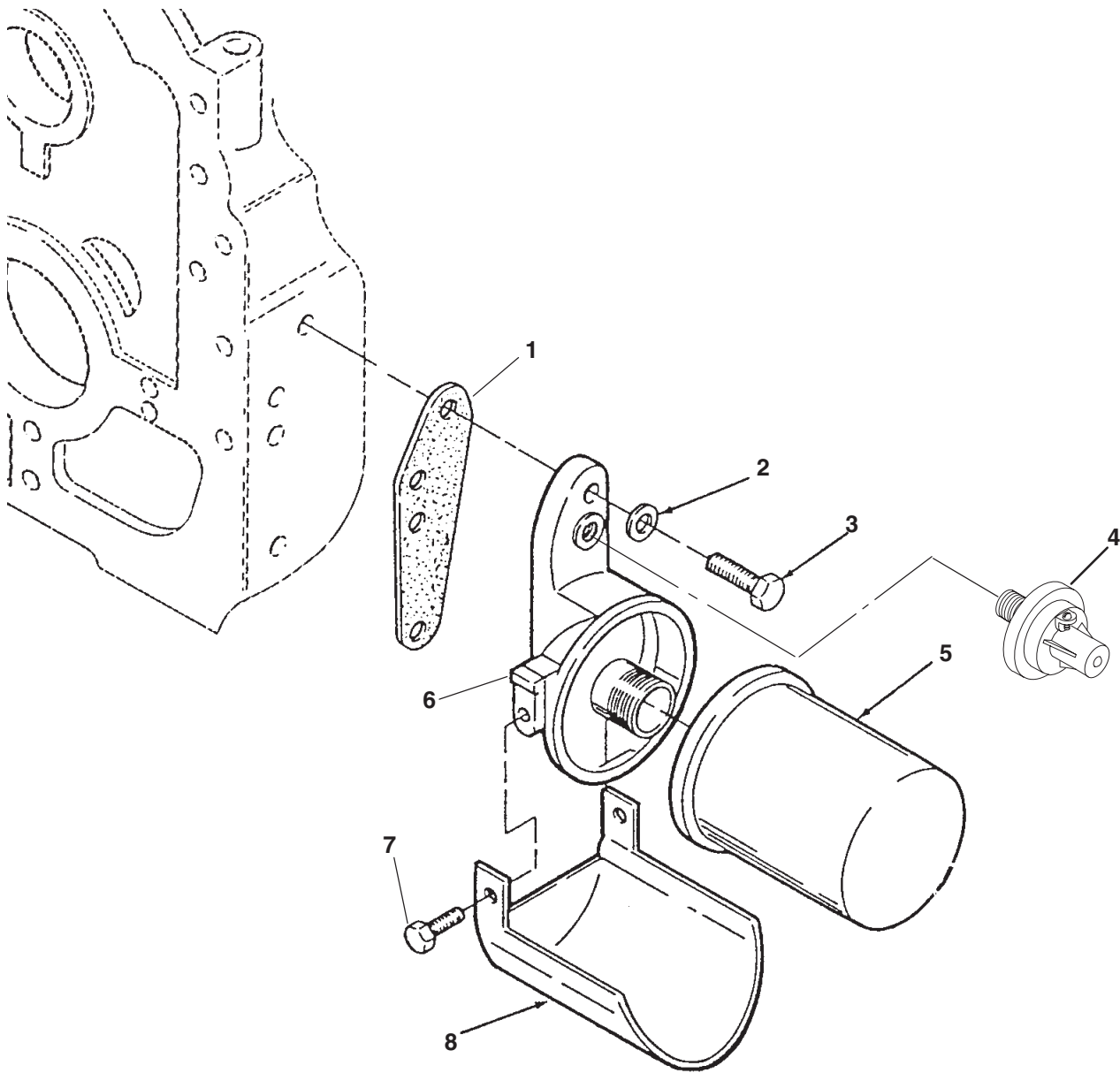
## Oil Base



REF NO.	PART NO.	QTY USED	PART DESCRIPTION	REF NO.	PART NO.	QTY USED	PART DESCRIPTION
1	123-1860-01	1	Cap and Indicator, Oil Fill	14	526-0251	4	Washer, Flat (3/8")
2	123-2105	1	Adapter Assy, Oil Fill (Includes Cap Adapter, Seal and O'Ring)	15	526-0030	4	Washer, Flat (3/8)
3	123-2091	1	Adapter, Oil Fill Cap	16	800-2089	4	Screw, Hex Head Cap (M10 x 1-1/2 x 40mm)
4	509-0142	1	Seal	17	503-2151	1	Hose, Oil Drain
5	509-0304	1	O'Ring	18	517-0345	1	Plug, Drain
6	870-2056	4	Nut, Lock Flange (M10 x 1-1/2")	19	504-0186	1	Valve, Oil Drain
7	123-1969-51	1	Tube, Oil Fill	20	120-1272	1	Cup, Oil Pump Intake
8	509-0269	1	Seal, Oil Fill Tube	21	856-0010	1	Washer, EIT Lock (3/8")
9	102-1384	1	Base Assy, Oil (Includes Parts Marked *)	22	102-1387	1	Gasket, Oil Base
10	505-0110	1	*Plug, Pipe (3/8")				
11	102-0743	1	*Gasket, Hex Head Plug				
12	102-0938	1	*Plug, Hex Head				
13	800-0302-01	4	Screw, Hex Head Cap (3/8-16 x 5-1/2")				

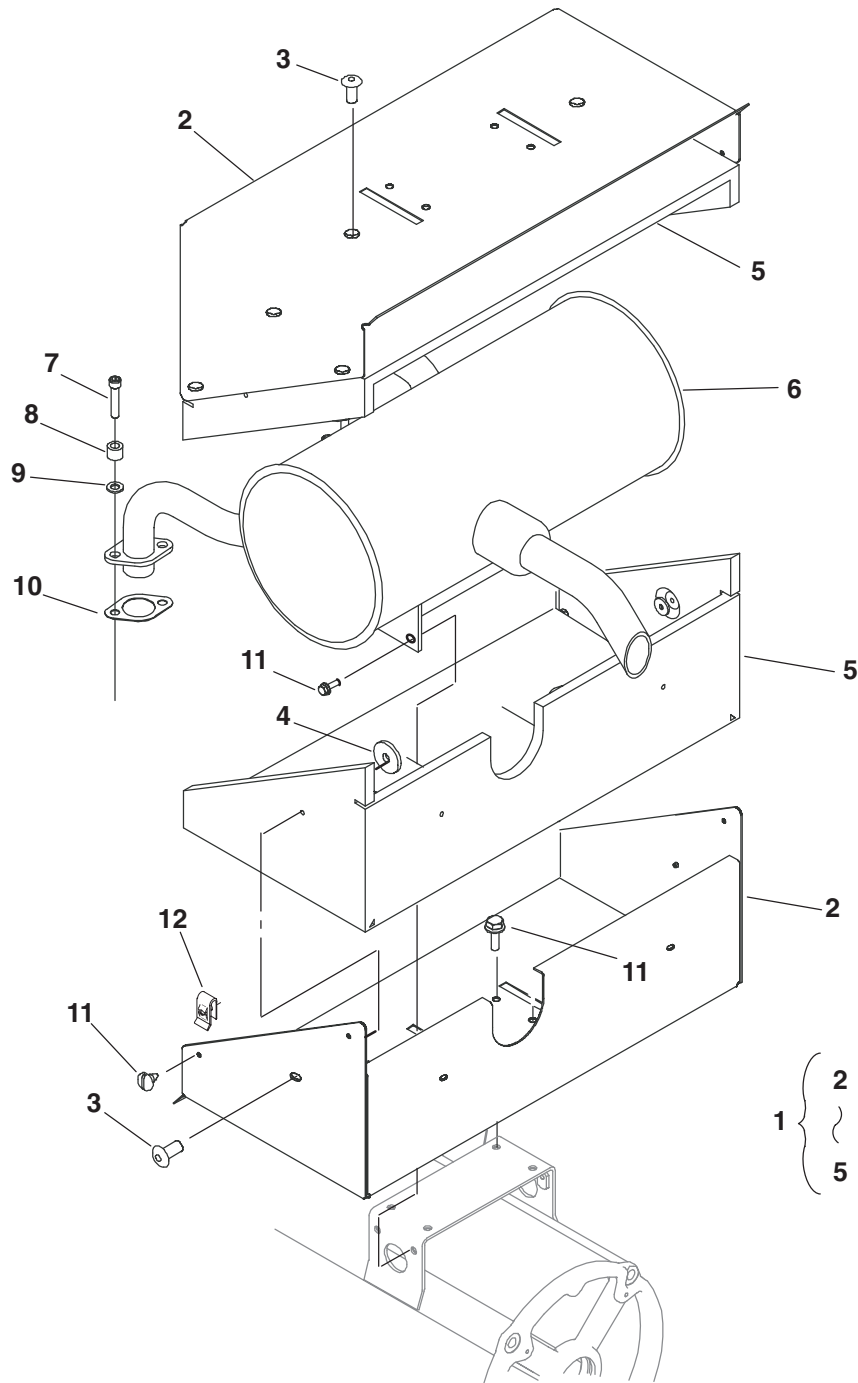
\* - Parts Included in Oil Base Assy.

## Oil Filter



REF NO.	PART NO.	QTY USED	PART DESCRIPTION	REF NO.	PART NO.	QTY USED	PART DESCRIPTION
1	122-0771	1	Gasket, Oil Filter Adapter	6	122-0814	1	Adapter, Oil Filter (Includes Screws)
2	526-0065	2	Washer, Copper Flat (5/16")	7	815-0340	2	Screw, Hex Washer Head Thread Cutting (#10-32 x 3/8")
3	800-0030-01	2	Screw, Hex Head Cap (5/16-18 x 1-1/4")	8	122-0352-50	1	Tray, Oil Filter Drip
4	309-0615	1	Switch, Pressure				
5	122-0800	1	Filter, Oil				

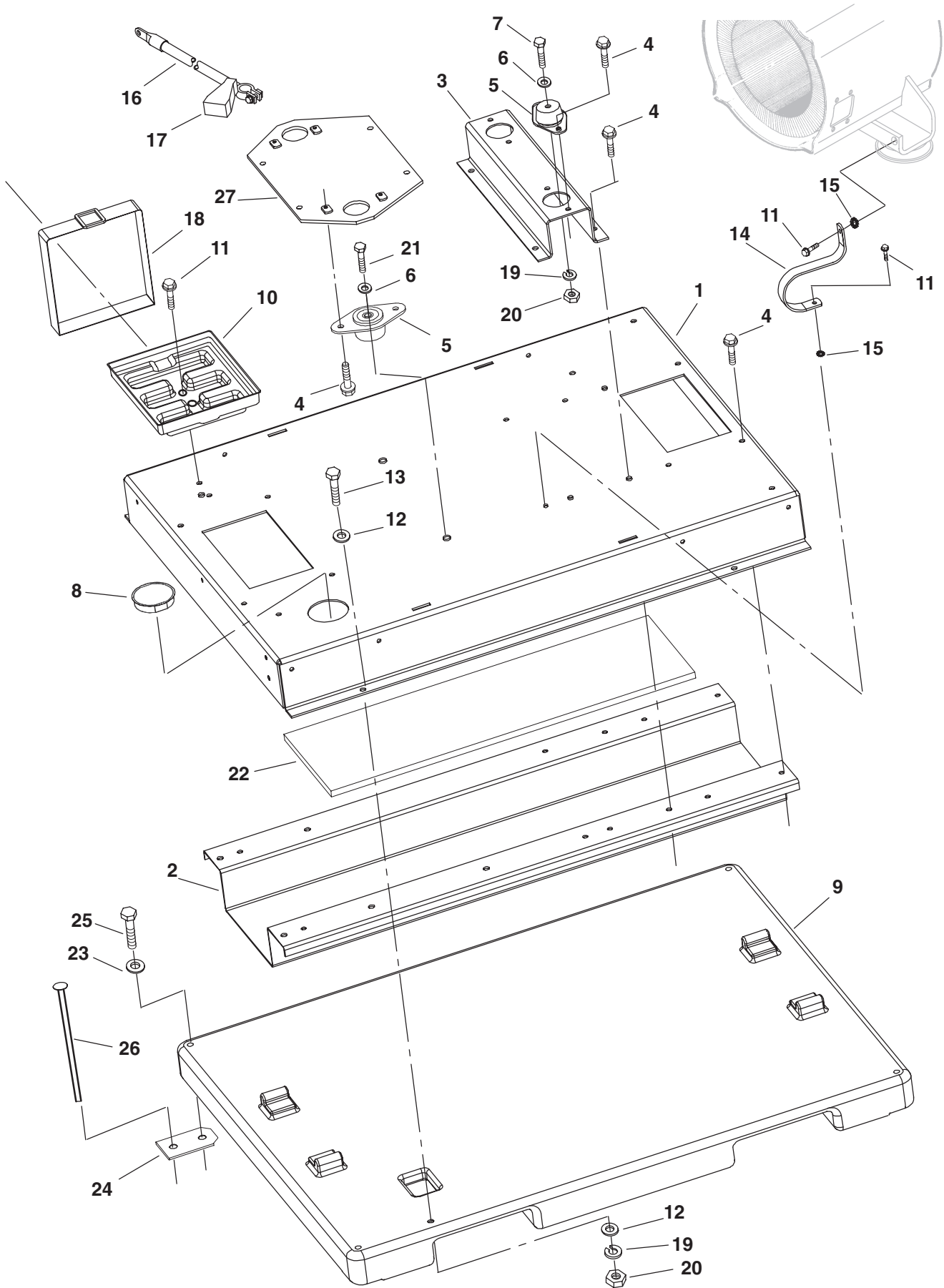
# Muffler



REF NO.	PART NO.	QTY USED	PART DESCRIPTION	REF NO.	PART NO.	QTY USED	PART DESCRIPTION
1			Shield Assy, Heat (Includes Parts Marked *)	7	802-0057-01	4	Screw, Socket Head (5/16-18 x 1.5")
	155-3325-01	1	Bottom	8	154-2870	4	Spacer, Washer
	155-3325-02	1	Top	9	740-1006	4	Washer, Flat (M8)
2	155-3307	2	*Shield, Muffler Heat	10	154-2747	2	Gasket, Exhaust
3	818-0217-03	12	*Rivet, Self Plug	11	821-6002-03	12	Screw, Hex Head Sems (M6 x 1 x 16mm)
4	526-0011	12	*Washer, Flat (3/16")	12	870-0178	4	Nut, Speed (1/4-20)
5			*Insulation, Heat Shield				
	155-3319	1	Bottom				
	155-3320	1	Top				
6	155-3305	1	Muffler				

\* - Parts Included in Heat Shield Assy.

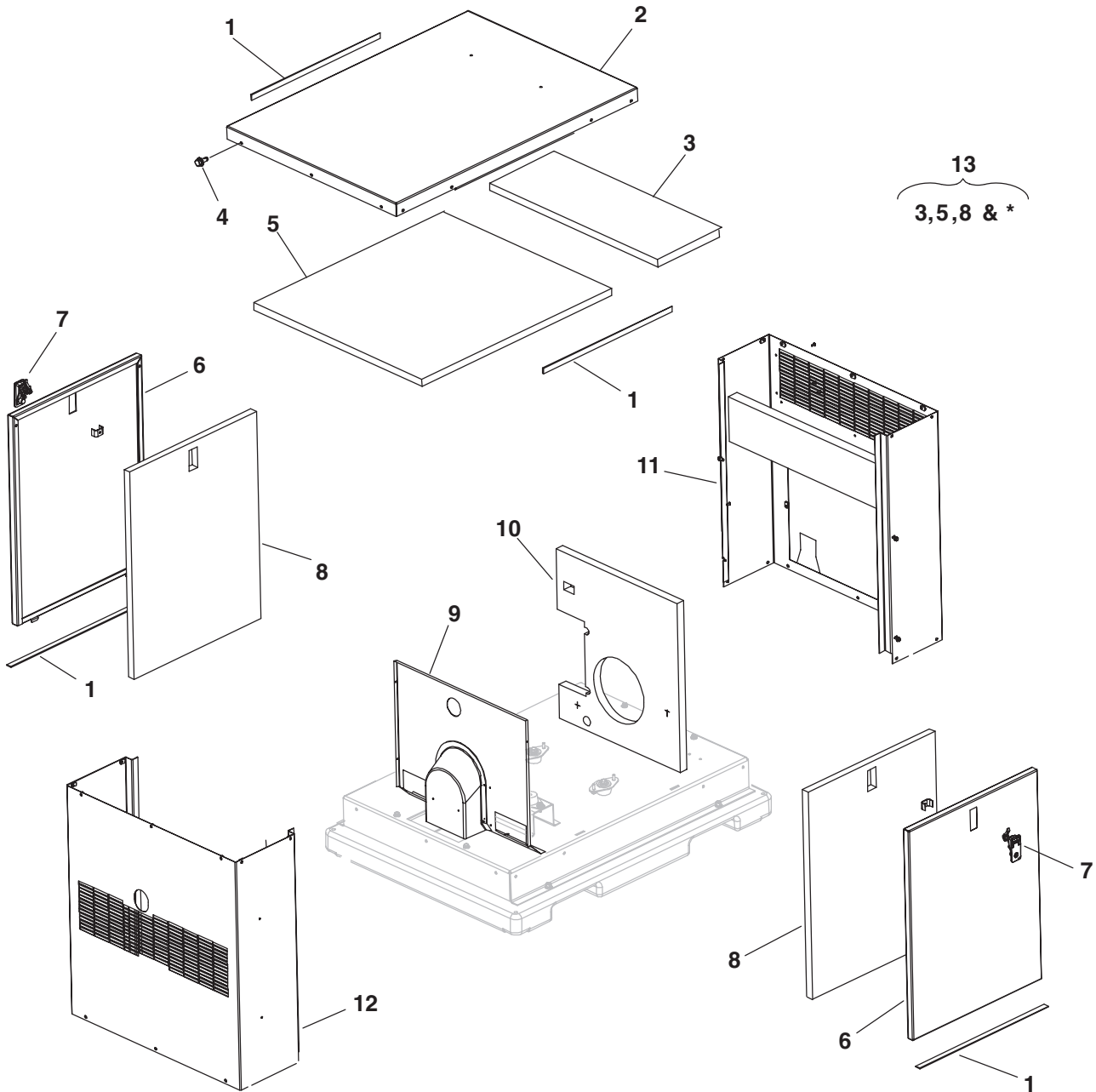
# Mounting Base



## Mounting Base

REF NO.	PART NO.	QTY USED	PART DESCRIPTION	REF NO.	PART NO.	QTY USED	PART DESCRIPTION
1	403-4354-02	1	Base, Skid	14	337-0081	1	Strap, Bond
2	134-5234-02	1	Duct, Air	15	856-0008	2	Washer, EIT (M8)
3	403-4352-02	1	Support, Alternator	16	416-0643	2	Cable, Battery
4	821-6003-02	16	Screw, Hex Head Sems (M8 x 1.25 x 20mm)	17	416-1019	1	Boot, Battery Cable
5	402-0728	4	Isolator, Vibration	18	416-1052	1	Strap, Battery
6	526-0030	6	Washer, Flat (3/8")	19	850-2010	6	Washer, Spring Lock (M10)
7	800-2093	2	Screw, Hex Head Cap (M10 x 1-1/2 x 60mm)	20	860-2009	6	Nut, Hex (M10 x 1.5)
8	517-0322	1	Plug, Hole	21	800-2091	2	Screw, Hex Head Cap (M10 x 1-1/2 x 50mm)
9	414-1862	1	Pallet, Shipping/Installation	22	405-6459	1	Insulation, Air Duct
10	416-1050	1	Tray, Battery	23	526-1516	4	Washer, Flat (3/8")
11	815-0829-04	4	Screw, Hex Head Flange Thread Forming (M8 x 1-1/4 x 16mm)	24	403-4361-02	4	Base, Mounting
12	526-2132	8	Washer, Flat (M10)	25	800-0284	4	Screw, Hex Head Cap (3/8-16 x 3.25")
13	800-2088	4	Screw, Hex Head Cap (M10 x 1-1/2 x 35mm))	26	403-4365	4	Spike, Base
				27	403-4353-02	1	Plate, Engine Mounting

# Housing

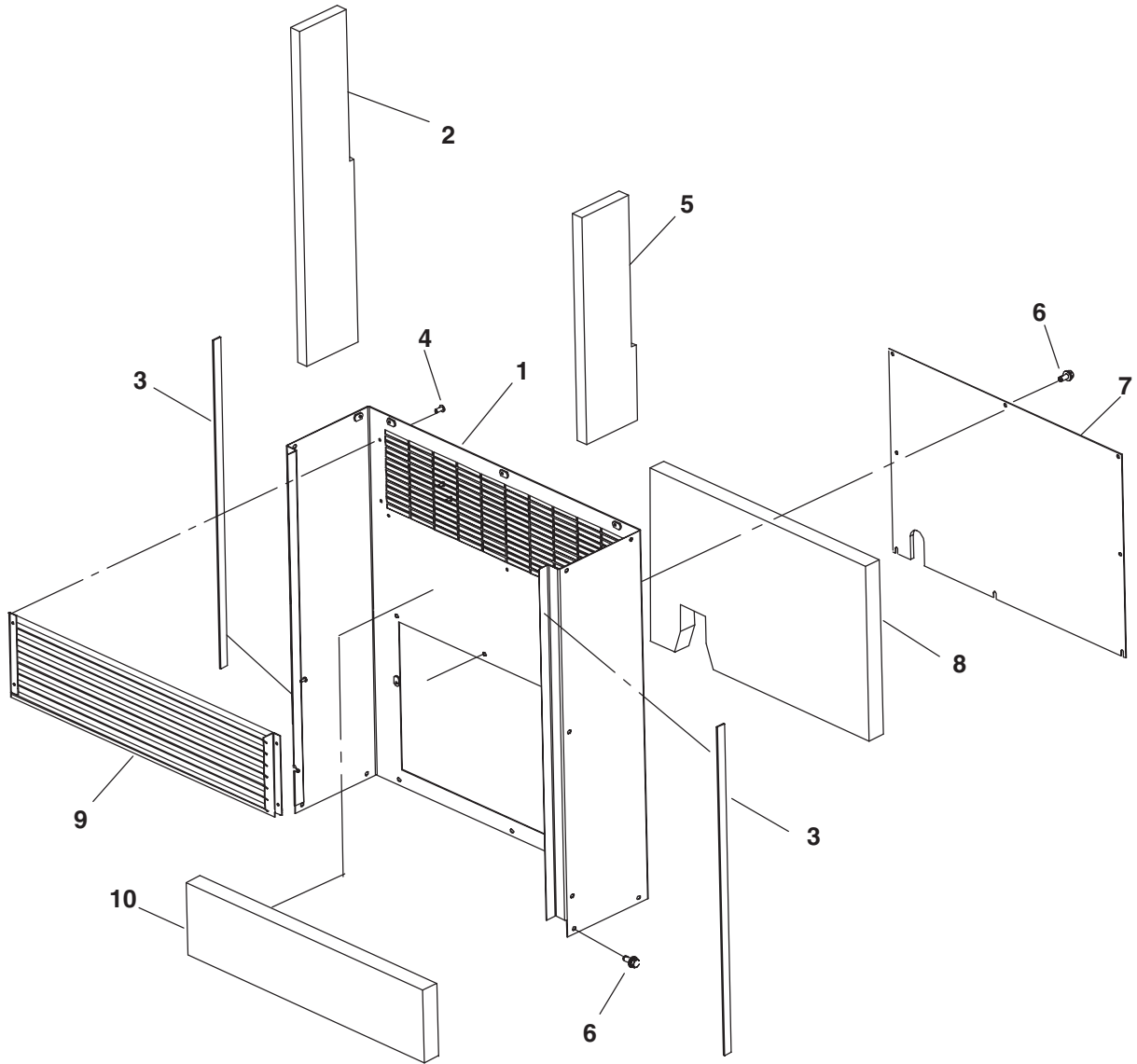


REF NO.	PART NO.	QTY USED	PART DESCRIPTION
1			Gasket, Side Door
	405-6460-01	2	568.5mm
	405-6460-03	2	525mm
2	405-6478	1	Panel, Roof
3	405-6474	1	*Insulation, Roof Front
4	821-6006-01	16	Screw, Hex Head Sems (M6 x 1 x 16mm)
5	405-6464	1	*Insulation, Roof
6	405-6475	2	Door, Access
7	406-0927	2	Latch, Door
8	405-6463	2	*Insulation, Door
9	-	1	Panel, Alternator Divider (See Separate Page for Components)

REF NO.	PART NO.	QTY USED	PART DESCRIPTION
10	-	1	Panel, Engine Divider (See Separate Page for Components)
11	-	1	Panel, Front (See Separate Page for Components)
12	-	1	Panel, Rear (See Separate Page for Components)
13	403-4368	1	Kit, Insulation (Includes Parts Marked *)

\* - Parts Included in Insulation Kit (Parts Listed on this Page and on the Following Housing Pages.)

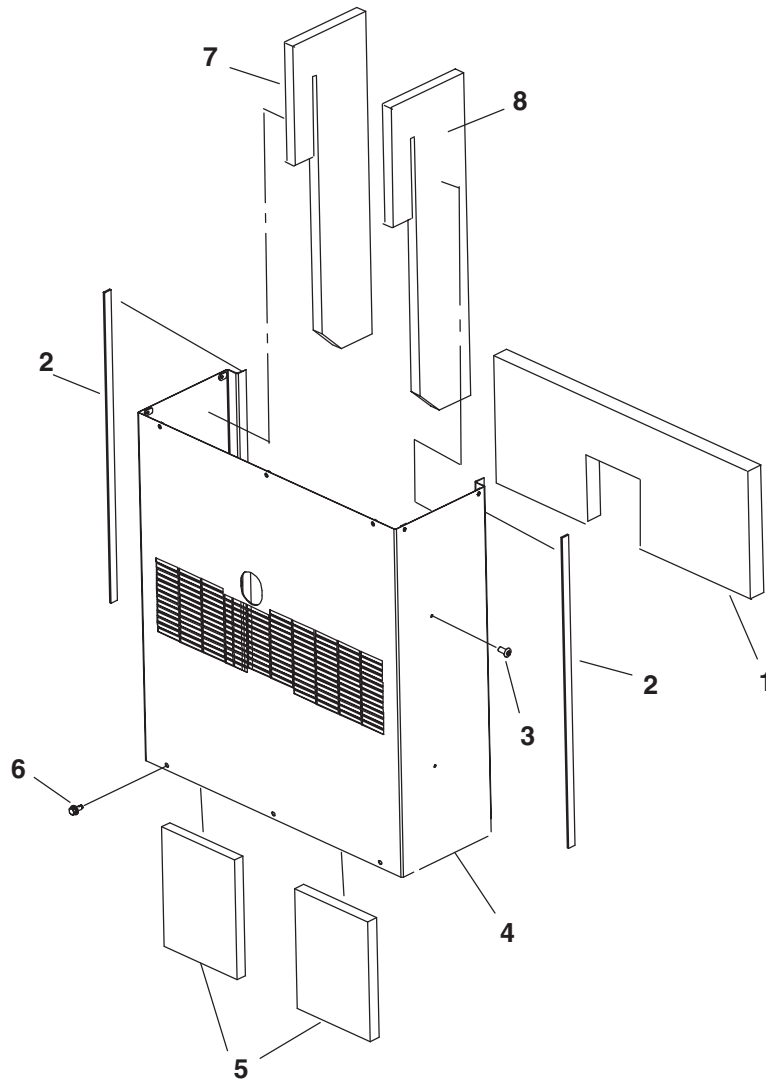
## Housing Front Panel



REF NO.	PART NO.	QTY USED	PART DESCRIPTION	REF NO.	PART NO.	QTY USED	PART DESCRIPTION
1	405-6476	1	Panel, Front	7	405-6479	1	Panel, Front Access
2	405-6467	1	*Insulation, Front Right (737.5 x 140mm)	8	405-6465	1	*Insulation, Front Access Panel
3	405-6460-02	2	Gasket, Door (750mm)	9	134-5233-06	1	Louver
4	818-0231-01	8	Rivet, Pop	10	405-6472	1	*Insulation, Front Panel
5	405-6466	1	*Insulation, Front Left (500 x 140mm)				
6	821-6006-01	16	Screw, Hex Head Sems (M6 x 1 x 16mm)				

\* – Parts Included in Insulation Kit Listed on Housing Page.

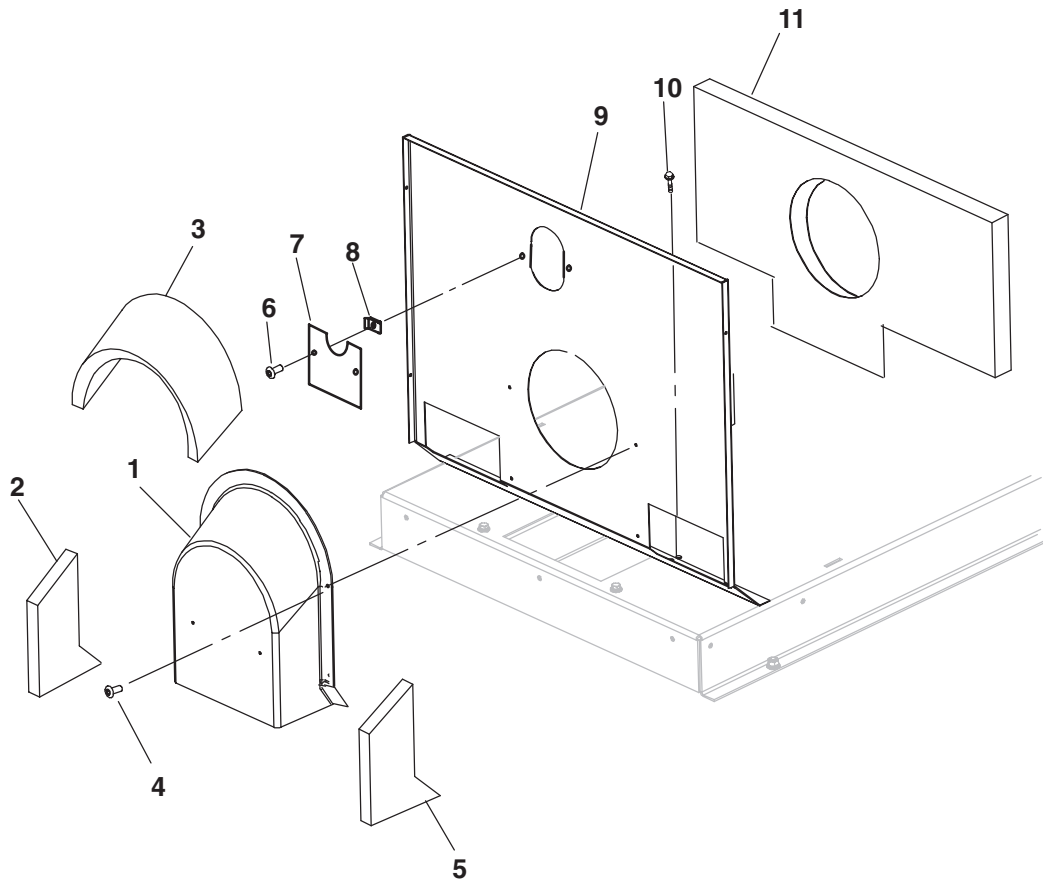
## Housing Rear Panel



REF NO.	PART NO.	QTY USED	PART DESCRIPTION	REF NO.	PART NO.	QTY USED	PART DESCRIPTION
1	405-6473	1	*Insulation, Rear Upper	7	405-6469	1	*Insulation, Rear Right
2	405-6460-02	2	Gasket, Door (750mm)	8	405-6471	1	*Insulation, Rear Left
3	818-0231-01	4	Rivet, Pop				
4	405-6477	1	Panel, Rear				
5	405-6468	2	*Insulation, Rear Panel				* - Parts Included in Insulation Kit Listed on Housing Page.
6	821-6006-01	7	Screw, Hex Head Sems (M6 x 1 x 16)				



## Alternator Divider Panel

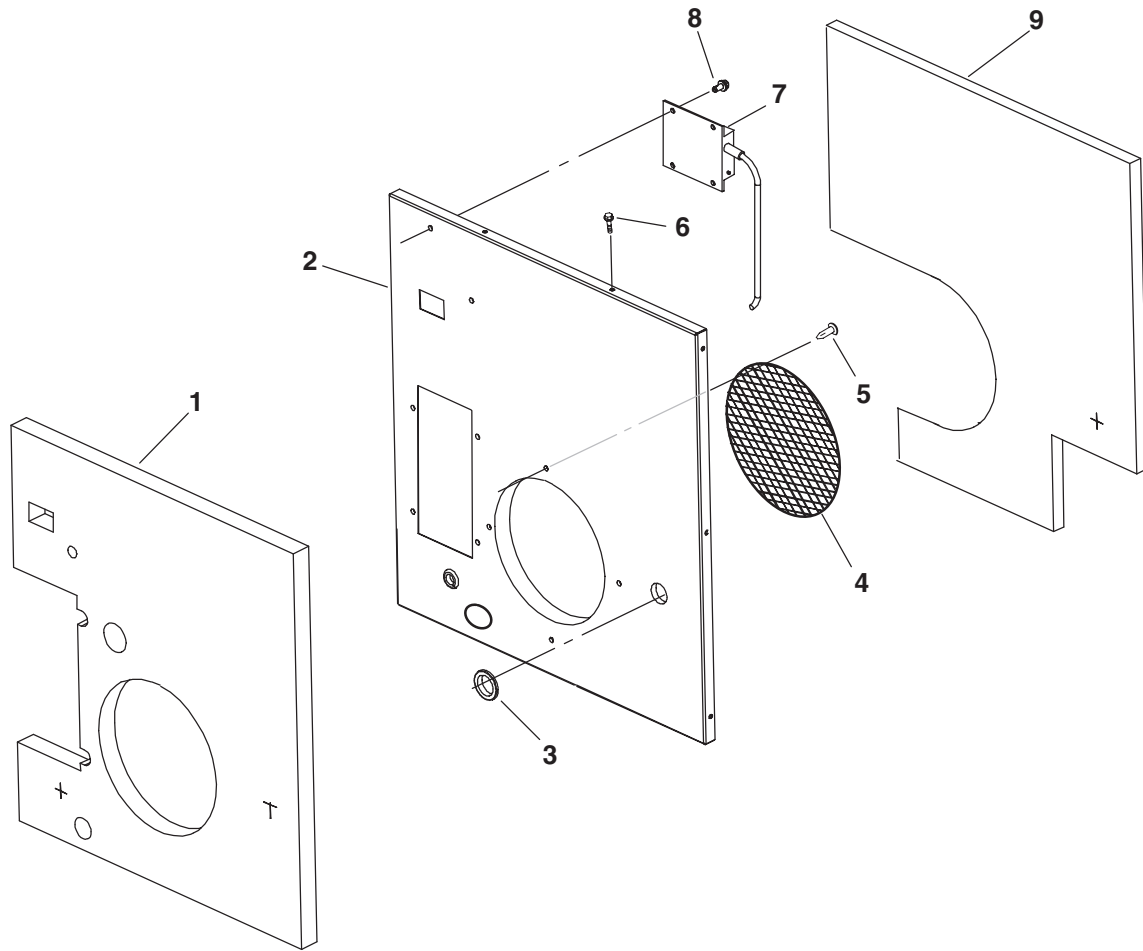


REF NO.	PART NO.	QTY USED	PART DESCRIPTION	REF NO.	PART NO.	QTY USED	PART DESCRIPTION
1	134-5247	1	Duct, Rear Air	8	870-0178	2	Nut, Speed (1/4-20)
2	405-6435	1	*Insulation, Right Duct	9	134-5237-02	1	Panel, Alternator Divider
3	405-6436	1	*Insulation, Upper Duct	10	821-6003-02	2	Screw, Hex Head Sems (M8 x 1.25 x 20)
4	818-0231-02	4	Rivet, Pop	11	405-6433	1	*Insulation, Lower Alternator
5	405-6438	1	*Insulation, Left Duct				
6	821-6002-03	2	Screw, Hex Head Sems (M6 x 1 x 16mm)				
7	134-5251-02	1	Cover, Panel Divider				

\* - Parts Included in Insulation Kit Listed on Housing Page.



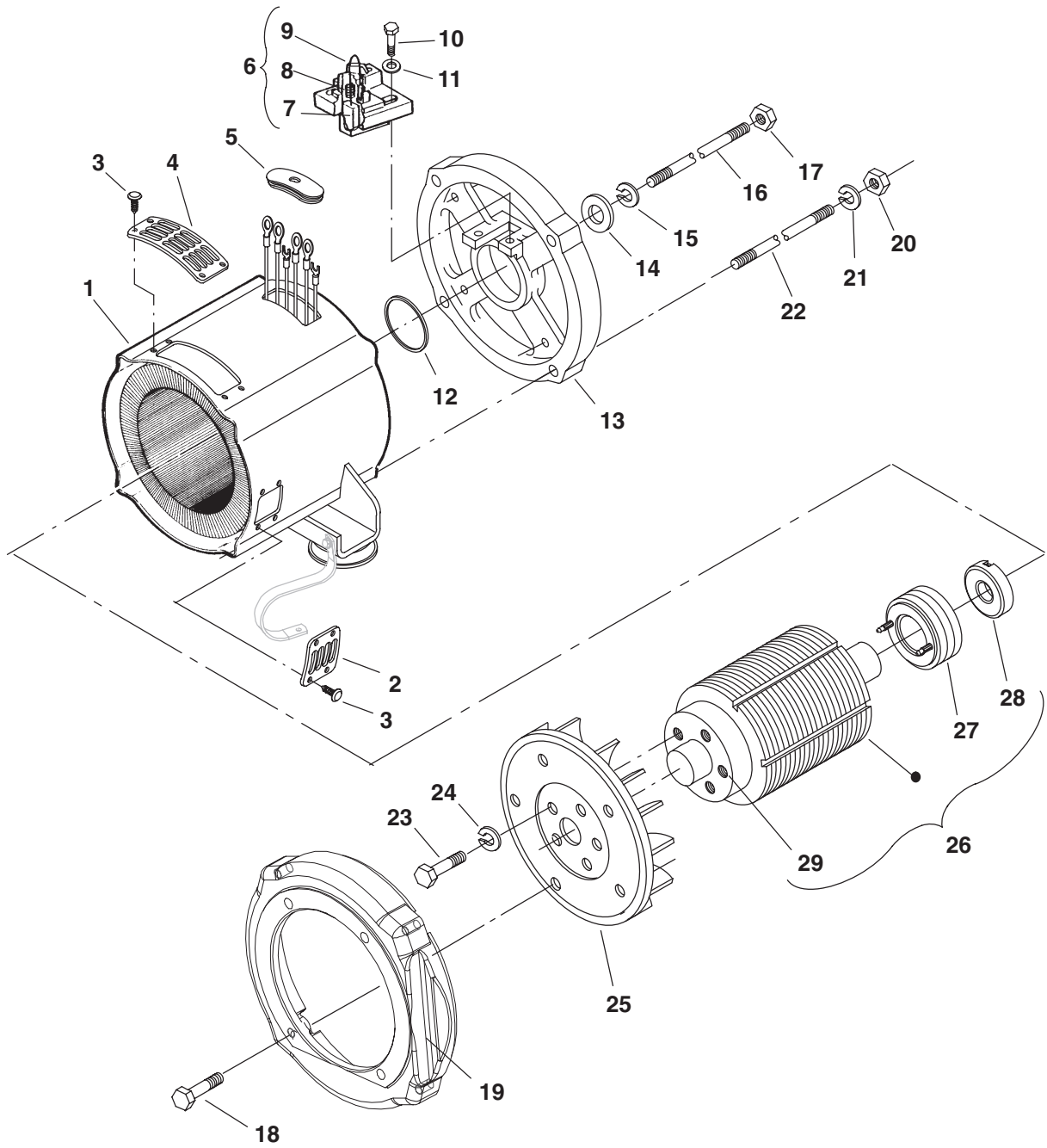
## Engine Divider Panel



REF NO.	PART NO.	QTY USED	PART DESCRIPTION	REF NO.	PART NO.	QTY USED	PART DESCRIPTION
1	405-6432	1	*Insulation	7	151-0762	1	Control Governor
2	134-5235-02	1	Panel, Engine Divider	8	821-6002-03	2	Screw, Hex Head Sems (M6 x 1 x 16mm)
3	508-0115	1	Grommet (2-1/8")	9	405-6455	1	*Insulation
4	134-5248	1	Screen, Air Intake				
5	406-0929	4	Clip, Panel				
6	821-6003-02	2	Screw, Hex Head Sems (M8 x 1.25 x 20mm)				

\* – Parts Included in Insulation Kit Listed on Housing Page.

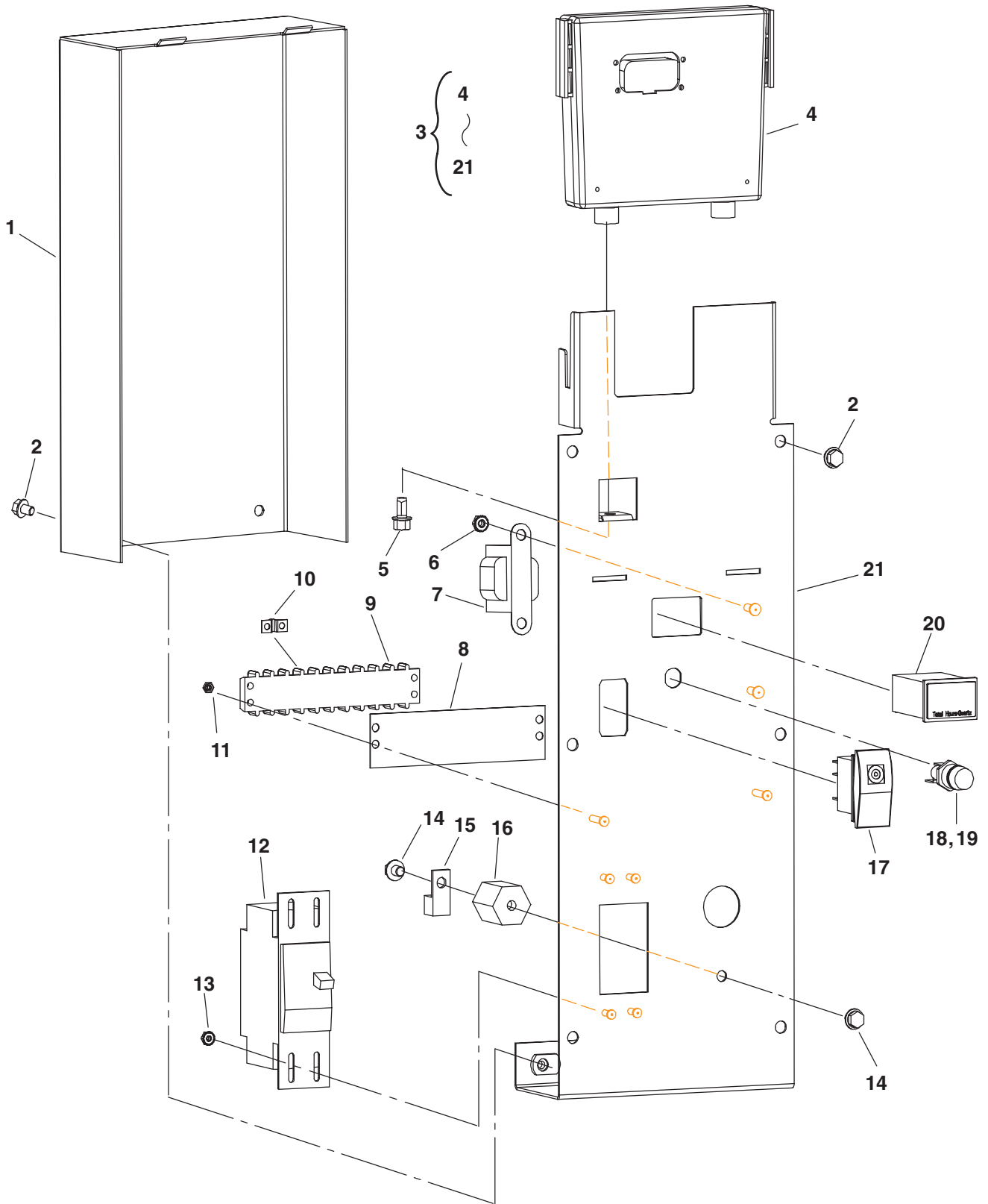
# Generator



## Generator

REF NO.	PART NO.	QTY USED	PART DESCRIPTION	REF NO.	PART NO.	QTY USED	PART DESCRIPTION
1	220-4585-02	1	Stator	16	520-1019-02	1	Stud, Rotor Thru (365mm)
2	232-3651-01	1	Guard, Fan (Small)	17	862-0004	1	Nut, Hex (7/16-14)
3	518-0649	16	Clip, Push On	18	800-0575-01	4	Screw, Flange Head (3/8-16 x 1")
4	232-3632-01	3	Guard, Fan (Large)	19	231-0392-02	1	Adapter, Generator
5	508-1085	1	Grommet, Lead Out	20	862-0003	4	Nut, Hex (3/8-16)
6	212-1285	1	Block Assy, Brush (Includes Brushes & Springs)	21	850-0114-07	4	Washer, Lock (3/8)
7	214-0103	2	Brush, Generator	22	520-0998-03	4	Stud (3/8-16 x 352mm)
8	212-1276-03	2	Spring, Generator Brush	23	800-2058	5	Screw (M8 x 1-1/4 x 25mm)
9	212-1286	1	Block, Brush (with Terminal)	24	850-2008	5	Washer, Lock (M8)
10	800-0309-89	2	Screw, Hex Head Machine (M5 x 0.8 x 16mm)	25	205-0269	1	Fan, Generator (Includes Disc)
11	526-0399-56	2	Washer, Flat (M5)	26	201-3583-04	1	Rotor Assy, Generator (Includes Collector Ring, Ball Bearing and Hub)
12	509-0196	1	O'Ring	27	204-0141	1	Ring, Collector
13	211-0447	1	Endbell	28	510-0099	1	Bearing, Ball
14	526-0399-22	1	Washer, Flat (7/16")	29	232-3649	1	Hub, Rotor
15	850-0114-08	1	Washer, Lock (7/16")				

# Control

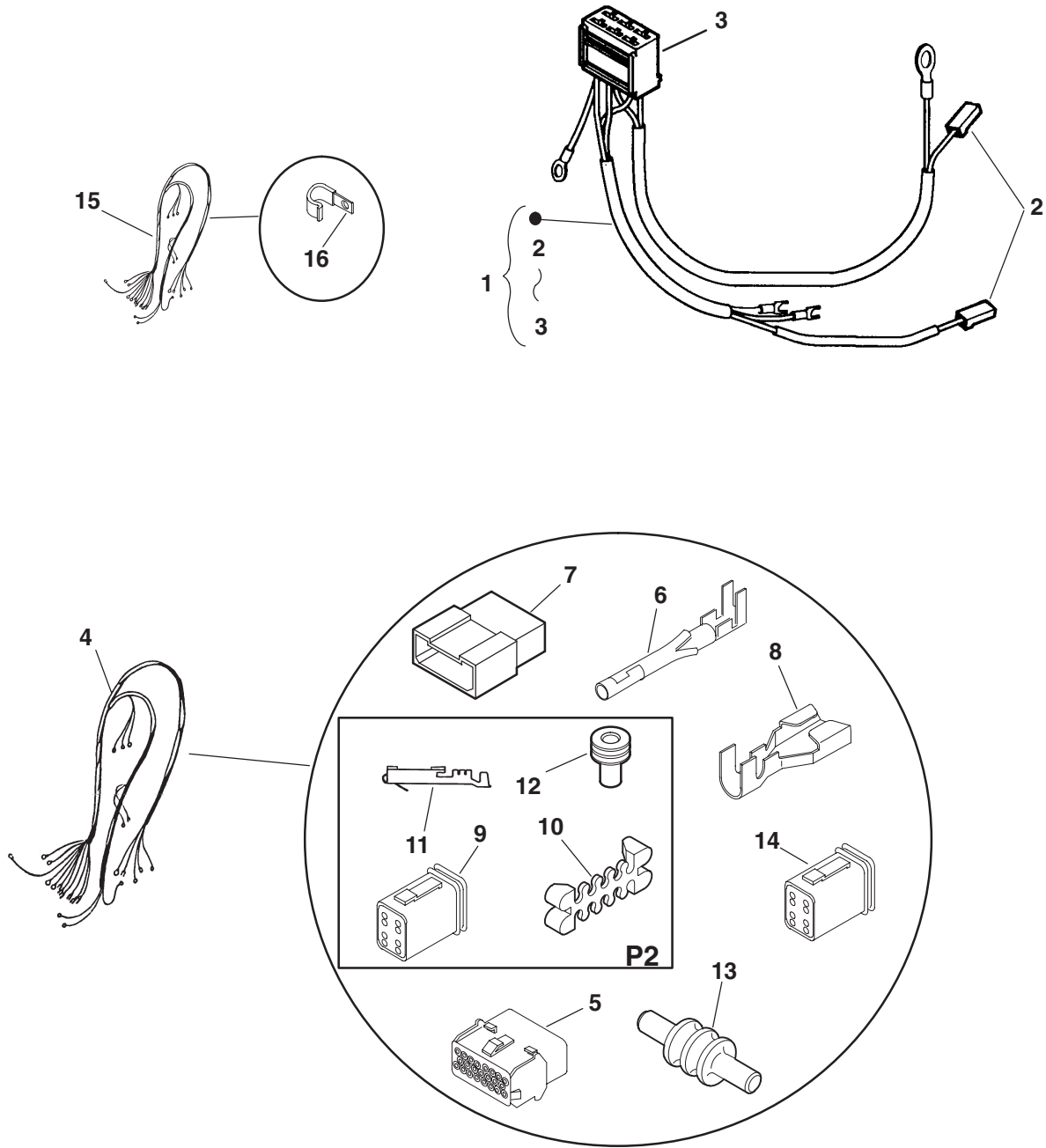


## Control

REF NO.	PART NO.	QTY USED	PART DESCRIPTION	REF NO.	PART NO.	QTY USED	PART DESCRIPTION
1	319-3929-02	1	Cover, Control	12	320-2005-03	1	*Breaker, Circuit (50A)
2	821-6002-03	8	Screw, Hex Head Sems (M6 x 1 x 16mm)	13	870-0183	4	*Nut, Sems ET (#6-32)
3	300-5315	1	Control Assy (Includes Parts Marked *)	14	821-0008	2	*Screw, Hex Washer Head Cap (1/4-20 x 5/16")
4	300-5046-01	1	*PCB, Control	15	332-1572	1	*Lug, Solderless
5	815-0943-02	1	*Screw, Hex Washer Head Thread Form (1/4-10 x 1/2")	16	332-2370	1	*Standoff, Insulator
6	870-0131	2	*Nut, ET Hex (#10-32)	17	308-1092	1	*Switch, Rocker
7	315-0822	1	*Transformer, Voltage	18	321-0175	1	*Holder, Fuse
8	332-3648	1	*Strip, Marker	19	321-0353	1	*Fuse
9	332-0751	1	*Block, Terminal (10 Place)	20	302-2002	1	*Meter, Hour
10	332-1043	1	*Jumper, Terminal Board	21	319-3922-02	1	*Panel, Control
11	860-0006	2	*Nut, Hex (#6-32)				

\* - Parts Included in Control Assy.

## Harnesses



REF NO.	PART NO.	QTY USED	PART DESCRIPTION	REF NO.	PART NO.	QTY USED	PART DESCRIPTION
1	338-3187-02	1	Harness, Engine (Includes Housings)	11	323-1709	3	*Terminal
2	332-0819	2	Housing, Connector – Push On	12	323-1708	3	*Seal, Cable
3	323-1386	1	Housing, Receptacle – 6 Way	13	323-1712	5	*Plug, Cavity
4	338-3825	1	Harness, Control (Includes Parts Marked *)	14	308-1019	1	*Connector, Switch (P3) (8 Pin)
5	323-1605-01	1	*Connector, Plug (P1) (23 Pin)	15	338-3845	1	Harness, Alternator (Reaches from Brush Holder to Control Harness) (Includes “J” Clip)
6	323-1614-01	18	*Pin, Socket Terminal	16	332-2634	1	Clip, “J”
7	323-0916	1	*Housing, Connector (P4) (6 Pin)				
8	332-2301	5	*Terminal, Male				
9	323-1743	1	*Housing (P2) (8 Pin)				
10	323-1741	1	*Housing, Lock				

\* – Parts Included in Control Harness.



## Labels, Gasket Kits

REF NO.	PART NO.	QTY USED	PART DESCRIPTION	REF NO.	PART NO.	QTY USED	PART DESCRIPTION
098-7614		1	Label Pkg (Includes Parts Marked #)	168-0190		1	Kit, Carbon Removal Gasket (Includes But is Not Limited to Parts Marked +)
098-6387		1	#Label, Caution (Hot Surfaces)				
098-2235-01		1	#Label, Ground	110-2987		2	+Gasket, Cylinder Head
098-7615		2	#Label, Warning (Hazardous Voltage/Rotating Parts)	110-3575		3	+Gasket, Valve Cover
098-6074-01		1	#Label, Warning (Damage Risks)	110-3604		2	+Seal, Oil (Valve)
098-6837		1	#Label, Warning (Exhaust Gas)	154-2219		2	+Gasket, Intake Manifold
098-5822		4	#Label, Warning (Lifting Points)	154-2747		2	+Gasket, Exhaust Manifold
				168-0191		1	Kit, Complete Engine Gasket (Includes But is Not Limited to Parts Marked •)
098-6980		1	Label, Air Cleaner Maintenance				
098-6586-02		1	Label, Battery Negative	101-0809		1	•Gasket, Rear Bearing Plate
098-7598		1	Label, Control (Danger Hazardous Voltage)	102-0743		1	•Gasket, Oil Drain
098-5387		1	Label, Danger (Hazardous Voltage) (2 x 3.32")	102-1397		1	•Gasket, Oil Base
098-4024		2	Label, Head Bolt Torque	103-0810		1	•Gasket, Gearcase
098-6802-04		3	Label, Model Identification – Onan Performer 24	110-2987		2	•Gasket, Cylinder Head
098-7642		2	Label, Model Identification (Cummins Onan RS12000 GenSet)	110-3575		3	•Gasket, Valve Cover
				110-3604		2	•Seal, Valve (11/32")
098-7268		1	Label, Neutral	120-0161		1	•Gasket Kit, Oil Pump
098-5969-04		1	Label, Periodic Maintenance	122-0771		1	•Gasket, Oil Filter Adapter
098-5759		1	Label, Warning (Hazardous Voltage)	154-0733		1	•Gasket, Adapter to Carburetor
				154-2219		2	•Gasket, Intake Manifold
541-0555		1	Kit, Battery Heater Kit (Includes Terminals, Sleeving, Heater and Instruction Sheet C587)	154-2747		2	•Gasket, Exhaust Manifold
				509-0008		1	•Seal, Governor Shaft Oil
333-0636		1	Heater, Battery	509-0040		1	•Seal, Gearcase Oil
				509-0041		1	•Seal, Bearing Plate Oil
				509-0117		1	•O'Ring, Valve Breather Cap
				509-0142		1	•O'Ring, Oil Fill Adapter Assy
				509-0269		1	•Seal, Oil Fill Tube
120-0161		1	Gasket Kit, Oil Pump (Includes Parts Marked *)				
120-0197		1	* .007"				
120-0202		1	* .005"				
120-0203		1	* .009"				

# – Parts Included in Label Pkg.

\* – Parts Included in Oil Pump Gasket Kit.

+ – Parts Included in Carbon Removal Gasket Kit.

• – Parts Included in Complete Engine Gasket Kit.

## Numerical Index

<u>Part No.</u>	<u>Page</u>	<u>Part No.</u>	<u>Page</u>	<u>Part No.</u>	<u>Page</u>	<u>Part No.</u>	<u>Page</u>
098-2235-01, <b>39</b>		104-0575, <b>7</b>		113-0311-02, <b>9</b>		134-5234-02, <b>27</b>	
098-4024, <b>39</b>		104-0776-00, <b>7</b>		113-0311-03, <b>9</b>		134-5235-02, <b>33</b>	
098-5387, <b>39</b>		104-0776-01, <b>7</b>		113-0311-05, <b>9</b>		134-5237-02, <b>31</b>	
098-5759, <b>39</b>		104-0779, <b>11</b>		114-0036, <b>9</b>		134-5247, <b>31</b>	
098-5822, <b>39</b>		104-1808, <b>8</b>		114-0188, <b>9</b>		134-5248, <b>33</b>	
098-5969-04, <b>39</b>		104-1966, <b>8</b>		114-0188-02, <b>9</b>		134-5251-02, <b>31</b>	
098-6074-01, <b>39</b>		105-0541, <b>8</b>		114-0188-10, <b>9</b>		140-1496, <b>20</b>	
098-6387, <b>39</b>		105-0594, <b>8</b>		114-0188-20, <b>9</b>		140-2005-50, <b>20</b>	
098-6586-02, <b>39</b>		105-0700, <b>8</b>		114-0188-30, <b>9</b>		140-2191-50, <b>20</b>	
098-6802-04, <b>39</b>		110-0539, <b>7</b>		114-0203, <b>9</b>		140-2493-53, <b>20</b>	
098-6837, <b>39</b>		110-0639, <b>7</b>		115-0006, <b>7</b>		140-2536-01, <b>20</b>	
098-6980, <b>39</b>		110-0904, <b>7</b>		115-0025, <b>14</b>		140-2628-01, <b>20</b>	
098-7268, <b>39</b>		110-1624-01, <b>7</b>		120-0140, <b>7</b>		140-2722-01, <b>20</b>	
098-7598, <b>39</b>		110-1716, <b>7</b>		120-0161, <b>39</b>		140-2761, <b>20</b>	
098-7614, <b>39</b>		110-1716-02, <b>7</b>		120-0197, <b>39</b>		140-2786, <b>20</b>	
098-7615, <b>39</b>		110-1716-05, <b>7</b>		120-0202, <b>39</b>		140-2942, <b>20</b>	
098-7642, <b>39</b>		110-1716-10, <b>7</b>		120-0203, <b>39</b>		146-0681, <b>16</b>	
101-0391, <b>7</b>		110-1716-25, <b>7</b>		120-0398, <b>7</b>		146-0776, <b>16</b>	
101-0793-02, <b>7</b>		110-1718, <b>7</b>		120-1272, <b>23</b>		146-0779, <b>18</b>	
101-0804, <b>7</b>		110-1719, <b>7</b>		120-1275-02, <b>7</b>		148-0597, <b>18</b>	
101-0804-02, <b>7</b>		110-2987, <b>7, 39</b>		122-0352-50, <b>24</b>		148-0975, <b>17</b>	
101-0804-10, <b>7</b>		110-3167, <b>7</b>		122-0771, <b>24, 39</b>		148-0976, <b>17</b>	
101-0804-20, <b>7</b>		110-3168, <b>7</b>		122-0800, <b>24</b>		148-1025, <b>17</b>	
101-0804-30, <b>7</b>		110-3549, <b>7</b>		122-0814, <b>24</b>		150-0075, <b>8</b>	
101-0805, <b>7</b>		110-3575, <b>7, 39</b>		123-0951, <b>7</b>		150-0078, <b>8</b>	
101-0805-02, <b>7</b>		110-3604, <b>7, 39</b>		123-0952, <b>7</b>		150-0621, <b>21</b>	
101-0805-10, <b>7</b>		110-3655, <b>7</b>		123-0954, <b>7</b>		150-0694, <b>21</b>	
101-0805-20, <b>7</b>		110-3655-02, <b>7</b>		123-0958, <b>7</b>		150-0939, <b>14</b>	
101-0805-30, <b>7</b>		110-3655-05, <b>7</b>		123-1417, <b>7</b>		150-1187, <b>13</b>	
101-0809, <b>7, 39</b>		110-3655-10, <b>7</b>		123-1860-01, <b>23</b>		150-1470-01, <b>13</b>	
102-0743, <b>23, 39</b>		110-3655-25, <b>7</b>		123-1969-51, <b>23</b>		150-1519, <b>8</b>	
102-0938, <b>23</b>		112-0265, <b>9</b>		123-2091, <b>23</b>		150-1520, <b>8</b>	
102-1384, <b>23</b>		112-0265-01, <b>9</b>		123-2105, <b>23</b>		150-2264, <b>21</b>	
102-1387, <b>23</b>		112-0265-02, <b>9</b>		134-4668-50, <b>22</b>		150-2750, <b>21</b>	
102-1397, <b>39</b>		112-0265-03, <b>9</b>		134-4680, <b>11</b>		151-0762, <b>33</b>	
103-0787-24, <b>13</b>		112-0265-05, <b>9</b>		134-4689, <b>21</b>		151-0763, <b>14</b>	
103-0810, <b>13, 39</b>		112-0267, <b>9</b>		134-4846-50, <b>22</b>		151-0765, <b>14</b>	
104-0043, <b>8</b>		112-0268, <b>9</b>		134-5127-02, <b>21</b>		151-0766, <b>14</b>	
104-0091, <b>7</b>		113-0311, <b>9</b>		134-5130-02, <b>21</b>		151-0768, <b>14</b>	
104-0170, <b>11</b>		113-0311-01, <b>9</b>		134-5233-06, <b>29</b>		151-0769, <b>14</b>	

## Numerical Index

<u>Part No.</u>	<u>Page</u>	<u>Part No.</u>	<u>Page</u>	<u>Part No.</u>	<u>Page</u>	<u>Part No.</u>	<u>Page</u>
154-0733, <b>16, 39</b>		211-0447, <b>35</b>		332-2370, <b>37</b>		405-6477, <b>30</b>	
154-2219, <b>16, 39</b>		212-1276-03, <b>35</b>		332-2634, <b>38</b>		405-6478, <b>28</b>	
154-2747, <b>25, 39</b>		212-1285, <b>35</b>		332-3648, <b>37</b>		405-6479, <b>29</b>	
154-2870, <b>25</b>		212-1286, <b>35</b>		333-0636, <b>39</b>		406-0927, <b>28</b>	
154-2873, <b>16</b>		214-0103, <b>35</b>		337-0081, <b>27</b>		406-0929, <b>33</b>	
155-1256, <b>18</b>		220-4585-02, <b>35</b>		338-3187-02, <b>38</b>		414-1862, <b>27</b>	
155-3305, <b>25</b>		231-0392-02, <b>35</b>		338-3825, <b>38</b>		416-0643, <b>27</b>	
155-3307, <b>25</b>		232-3632-01, <b>35</b>		338-3845, <b>38</b>		416-1019, <b>27</b>	
155-3319, <b>25</b>		232-3649, <b>35</b>		402-0728, <b>27</b>		416-1050, <b>27</b>	
155-3320, <b>25</b>		232-3651-01, <b>35</b>		403-4202-02, <b>22</b>		416-1052, <b>27</b>	
155-3325-01, <b>25</b>		300-5046-01, <b>37</b>		403-4352-02, <b>27</b>		501-0648, <b>18</b>	
155-3325-02, <b>25</b>		300-5315, <b>37</b>		403-4353-02, <b>27</b>		501-0684, <b>19</b>	
166-0767, <b>13</b>		302-2002, <b>37</b>		403-4354-02, <b>27</b>		502-0184, <b>19</b>	
166-0770, <b>21</b>		307-0268-01, <b>19</b>		403-4361-02, <b>27</b>		502-1145, <b>17, 18</b>	
166-0771, <b>21</b>		307-2930, <b>18</b>		403-4363-04, <b>14</b>		502-1146, <b>16</b>	
166-0785, <b>13</b>		308-1019, <b>38</b>		403-4365, <b>27</b>		503-1133, <b>16, 18</b>	
166-0786, <b>13</b>		308-1092, <b>37</b>		403-4368, <b>28</b>		503-1336, <b>20</b>	
166-0820, <b>21</b>		309-0615, <b>24</b>		405-6432, <b>33</b>		503-1606-03, <b>20</b>	
167-0272, <b>7</b>		312-0256, <b>16</b>		405-6433, <b>31</b>		503-1880-01, <b>16</b>	
167-1615-01, <b>21</b>		315-0822, <b>37</b>		405-6435, <b>31</b>		503-1882-03, <b>20</b>	
167-1615-04, <b>21</b>		319-3922-02, <b>37</b>		405-6436, <b>31</b>		503-2151, <b>23</b>	
168-0190, <b>39</b>		319-3929-02, <b>37</b>		405-6438, <b>31</b>		504-0186, <b>23</b>	
168-0191, <b>39</b>		320-2005-03, <b>37</b>		405-6455, <b>33</b>		505-0084, <b>18</b>	
179-0836-02, <b>18</b>		321-0175, <b>37</b>		405-6459, <b>27</b>		505-0099, <b>19</b>	
179-0837-02, <b>19</b>		321-0353, <b>37</b>		405-6460-01, <b>28</b>		505-0102, <b>18</b>	
191-1456, <b>13</b>		323-0916, <b>38</b>		405-6460-02, <b>29, 30</b>		505-0110, <b>23</b>	
191-1766, <b>15</b>		323-1386, <b>38</b>		405-6460-03, <b>28</b>		505-0307, <b>18</b>	
191-1931, <b>15</b>		323-1605-01, <b>38</b>		405-6463, <b>28</b>		505-1560, <b>19</b>	
191-1947, <b>15</b>		323-1614-01, <b>38</b>		405-6464, <b>28</b>		508-0055, <b>19</b>	
191-1949-04, <b>15</b>		323-1708, <b>38</b>		405-6465, <b>29</b>		508-0115, <b>33</b>	
191-1950, <b>15</b>		323-1709, <b>38</b>		405-6466, <b>29</b>		508-0331, <b>21</b>	
191-1951, <b>15</b>		323-1712, <b>38</b>		405-6467, <b>29</b>		508-1085, <b>35</b>	
191-1953, <b>15</b>		323-1741, <b>38</b>		405-6468, <b>30</b>		509-0008, <b>13, 39</b>	
191-1954, <b>15</b>		323-1743, <b>38</b>		405-6469, <b>30</b>		509-0040, <b>13, 39</b>	
191-1955, <b>15</b>		332-0751, <b>37</b>		405-6471, <b>30</b>		509-0041, <b>7, 39</b>	
191-1956, <b>15</b>		332-0819, <b>38</b>		405-6472, <b>29</b>		509-0117, <b>7, 39</b>	
191-2208, <b>21</b>		332-1043, <b>37</b>		405-6473, <b>30</b>		509-0142, <b>23, 39</b>	
201-3583-04, <b>35</b>		332-1356, <b>16</b>		405-6474, <b>28</b>		509-0196, <b>35</b>	
204-0141, <b>35</b>		332-1572, <b>37</b>		405-6475, <b>28</b>		509-0269, <b>23, 39</b>	
205-0269, <b>35</b>		332-2301, <b>38</b>		405-6476, <b>29</b>		509-0304, <b>23</b>	

## Numerical Index

<u>Part No.</u>	<u>Page</u>	<u>Part No.</u>	<u>Page</u>	<u>Part No.</u>	<u>Page</u>	<u>Part No.</u>	<u>Page</u>
510-0014,	<b>13</b>	526-2132,	<b>27</b>	815-0829-04,	<b>27</b>		
510-0015,	<b>8</b>	541-0411,	<b>15</b>	815-0943-02,	<b>37</b>		
510-0099,	<b>35</b>	541-0555,	<b>39</b>	818-0217-03,	<b>25</b>		
510-0105,	<b>13</b>	740-1004,	<b>7</b>	818-0231-01,	<b>29, 30</b>		
515-0001,	<b>8</b>	740-1006,	<b>25</b>	818-0231-02,	<b>31</b>		
515-0284,	<b>11</b>	750-1006,	<b>15</b>	821-0008,	<b>22, 37</b>		
516-0072,	<b>7</b>	800-0007,	<b>7</b>	821-0010,	<b>14, 21</b>		
516-0130,	<b>13</b>	800-0011,	<b>7</b>	821-0013,	<b>20</b>		
516-0141,	<b>7</b>	800-0030-01,	<b>24</b>	821-0018,	<b>17, 21</b>		
517-0048-01,	<b>7</b>	800-0032-01,	<b>13</b>	821-6002-03,	<b>25, 31, 33, 37</b>		
517-0136,	<b>21</b>	800-0035,	<b>16</b>	821-6003-02,	<b>18, 19, 27, 31, 33</b>		
517-0322,	<b>27</b>	800-0036,	<b>16</b>	821-6006-01,	<b>28, 29, 30</b>		
517-0345,	<b>23</b>	800-0051,	<b>7</b>	850-0114-07,	<b>35</b>		
518-0014,	<b>8</b>	800-0058,	<b>16</b>	850-0114-08,	<b>35</b>		
518-0515,	<b>13, 21</b>	800-0284,	<b>27</b>	850-2008,	<b>35</b>		
518-0574,	<b>21</b>	800-0302-01,	<b>23</b>	850-2010,	<b>27</b>		
518-0649,	<b>35</b>	800-0309-89,	<b>35</b>	851-0029,	<b>7</b>		
520-0876,	<b>7</b>	800-0575-01,	<b>35</b>	854-0010,	<b>13</b>		
520-0918,	<b>7</b>	800-0595,	<b>15</b>	856-0008,	<b>27</b>		
520-0919,	<b>7</b>	800-2058,	<b>35</b>	856-0010,	<b>23</b>		
520-0933,	<b>13</b>	800-2088,	<b>27</b>	860-0006,	<b>37</b>		
520-0998-03,	<b>35</b>	800-2089,	<b>23</b>	860-2009,	<b>27</b>		
520-1019-02,	<b>35</b>	800-2091,	<b>27</b>	862-0003,	<b>35</b>		
526-0011,	<b>25</b>	800-2093,	<b>27</b>	862-0004,	<b>35</b>		
526-0017,	<b>11</b>	801-0050,	<b>7</b>	862-0015,	<b>13</b>		
526-0018,	<b>20, 21</b>	802-0057-01,	<b>25</b>	870-0131,	<b>14, 21, 37</b>		
526-0021,	<b>22</b>	803-0071,	<b>7</b>	870-0178,	<b>25, 31</b>		
526-0030,	<b>23, 27</b>	804-0019,	<b>14</b>	870-0183,	<b>37</b>		
526-0063,	<b>7</b>	805-0010,	<b>9</b>	870-0212,	<b>14</b>		
526-0065,	<b>13, 24</b>	809-0035,	<b>7</b>	870-0399,	<b>20</b>		
526-0066,	<b>7</b>	815-0046,	<b>13</b>	870-2056,	<b>23</b>		
526-0122,	<b>15, 16</b>	815-0261,	<b>16, 21</b>				
526-0250,	<b>7</b>	815-0290,	<b>22</b>				
526-0251,	<b>16, 23</b>	815-0293,	<b>17</b>				
526-0356,	<b>11</b>	815-0337,	<b>21</b>				
526-0399-22,	<b>35</b>	815-0340,	<b>13, 24</b>				
526-0399-56,	<b>35</b>	815-0463,	<b>16</b>				
526-0402,	<b>7</b>	815-0508,	<b>22</b>				
526-1516,	<b>27</b>	815-0659,	<b>13</b>				
526-2100,	<b>18</b>	815-0721,	<b>21</b>				



**Onan Corporation**  
**1400 73rd Avenue N.E.**  
**Minneapolis, MN 55432**  
**1-800-888-ONAN**  
**612-574-5000 International Use**  
**Telex: 275477**  
**Fax: 612-574-8087**

Onan is a registered trademark of Onan Corporation