

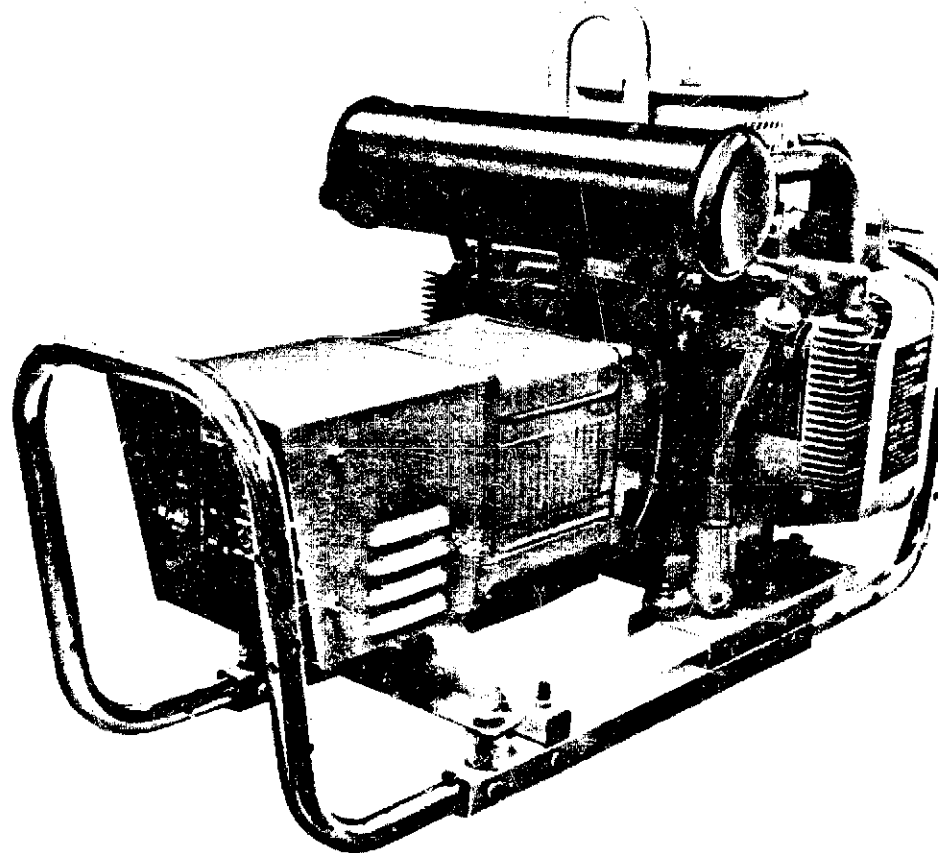
The following catalog has gaps in its page numbers, or doesn't have any numbers. We have chosen to leave the page numbering in the order that Acrobat assigns it.

Parts Manual

6.5 kW

BFAB

GenSet



GENERAL INFORMATION

INSTRUCTIONS FOR ORDERING REPAIR PARTS

For parts or service, contact the dealer from whom you purchased this equipment or refer to your Nearest Authorized Onan Parts and Service Center.

To avoid errors or delay in filling your parts order, please furnish all information requested.

Always refer to the nameplate on your unit.

1. Always give the MODEL, SPEC NO. and SERIAL NO.

McGRAW-EDISON

Onan

MODEL AND SPEC NO.

SERIAL NO.

M-1149

For handy reference, insert "YOUR" nameplate information in the spaces above.

2. Do not order by reference number; always use part number and description.
3. Give the part number, description and quantity needed of each item. If an older part cannot be identified, return the part prepaid to your dealer or nearest Onan Parts and Service Center. Print your name and address plainly on the package. Write a letter to the same address stating the reason for returning the part.
4. State definite shipping instructions. Any claim for loss or damage to your unit in transit should be filed promptly against the transportation company making the delivery. Shipments are complete unless the packing list indicates items are back ordered.

Prices are purposely omitted from this Parts Manual due to the confusion resulting from fluctuating costs, import duties, sales taxes, exchange rates, etc.

For current parts prices, consult your Onan Dealer, Distributor or Parts and Service Center.

"En esta lista de partes los precios se omiten de proposito, ya que bastante confusion resulto de fluctuaciones de los precios, derechos aduanales, impuestos de venta, cambios extrajeros, etc."

Consiga los precios vigentes de su distribuidor de productos "ONAN."

INDEX

	LOCATION
INTRODUCTION	A4
DATA TABLE	A4
STANDARD PARTS SECTION	
Bell, End	B11
Block, Cylinder	A8,A9
Box, Ignition Breaker	B7
Camshaft	A10
Carburetor Parts	B4,B5
Choke and Stop Switch - Key 1	B5
Control - Key 1	B12
Control - Key 3	B13
Crankshaft	A7
Flywheel	A7
Frame - Key 1	B14
Frame - Key 2	C1
Fuel System	B2, B3
Gearcase	A10
Generator Set Illustration - Key 1	A5
Generator Set Illustration - Key 2	A6
Governor	A13
Housing, Air	A13
Ignition System	B6
Motor Parts, Starter - Key 2	B8
Oil System	A12
Piston and Rod	A11
Service Kits and Paint	C2
Solenoid, Starter - Key 2	B9
Starter, Recoil - Key 1	A14
Tray, Battery - Key 2	B10
OPTIONAL PARTS SECTION	
Battery	D4
Charger, Battery	D3
Cover, Protective	D7
Dolly Kit	D6
Plugs, Twistlock	D7
Standby, Home	D5
Tank, Fuel (6-1/4 Gal.)	D2

INTRODUCTION

This catalog applies to the Generator Sets listed below. Parts are arranged in groups of related items. Each illustrated part is identified by a reference number corresponding to the same reference number in the parts list for that group. Parts illustrations are typical. Using the MODEL NUMBER from the engine nameplate, select the Parts Key Number (1 or 2) that applies to your Generator Model Number. This Parts Key Number represents parts that differ between models. Unless otherwise mentioned in the description, parts are interchangeable between models. Right and left sides are determined by facing the flywheel end of the generator set.

DATA TABLE

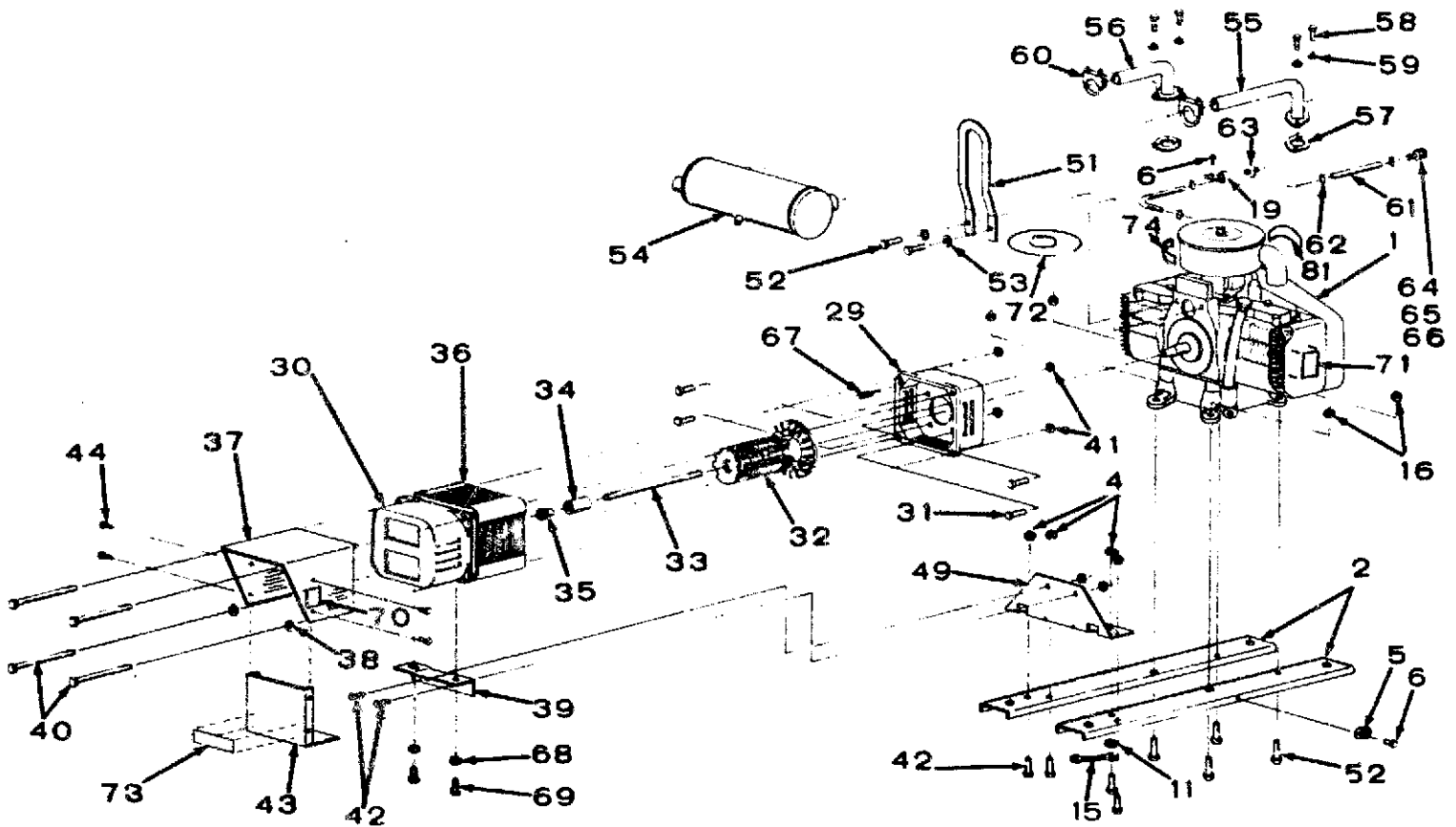
MODEL	WATTS	HERTZ	VOLTS	PHASE	FEATURES	PARTS KEY NUMBER
6.5B ^F AB-3P/*	6500	60	120/240	1	Manual Start	1
6.5B ^F AB-3E/*	6500	60	120/240	1	Electric Start	2

- * - The diagonal line (/) in the model and specification number separates generator set characteristics from the specification number and letters. The specification number denotes customer requested options or deviations from a standard (1J, 1K, etc.) model. The specification letter advances (J to K, K to L, etc.) with major manufacturing changes.

STANDARD PARTS SECTION

This section contains standard parts applicable to models listed in the generator set data table.

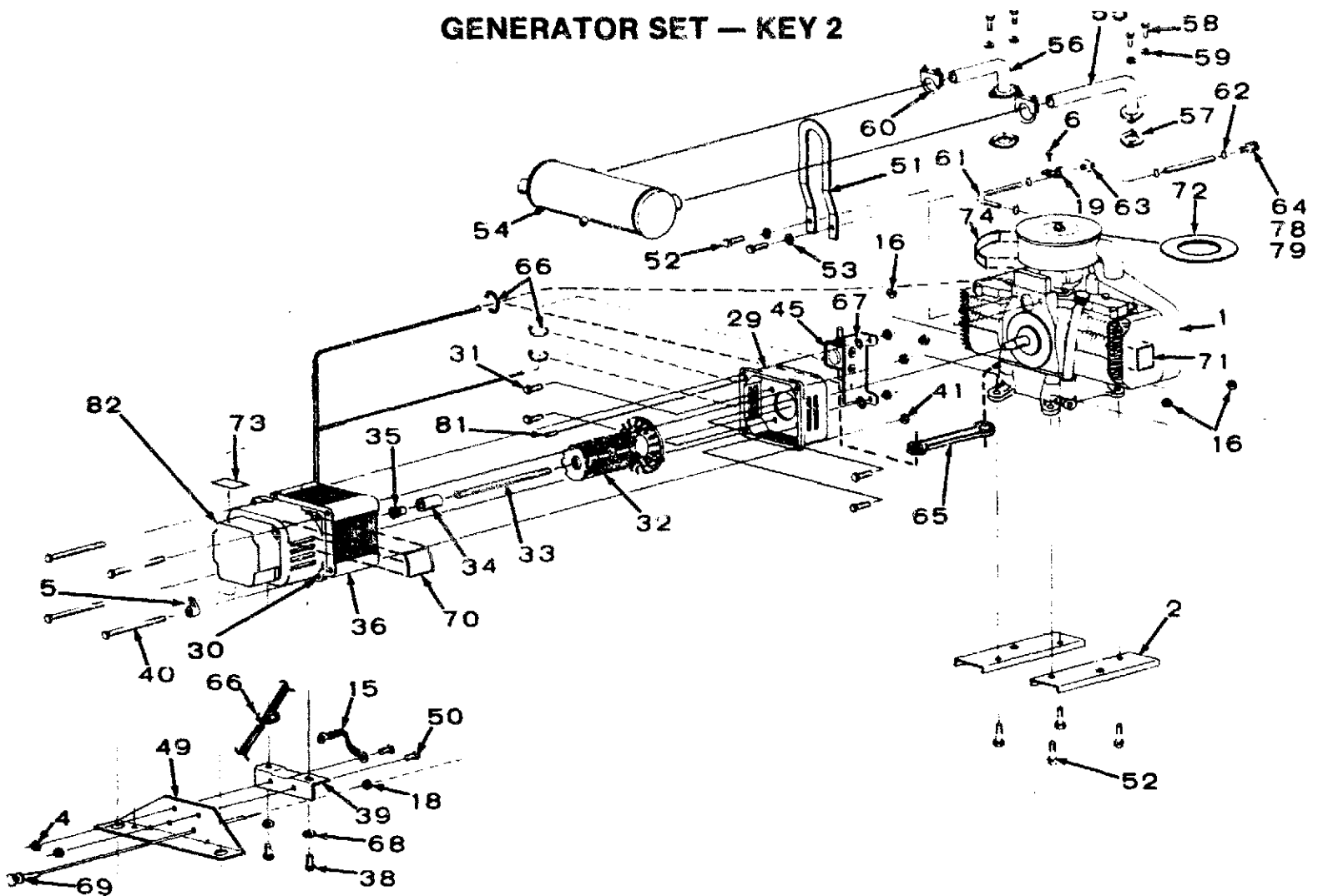
GENERATOR SET -- KEY 1



REF. NO.	PART NO.	QTY. USED	PART DESCRIPTION	REF. NO.	PART NO.	QTY. USED	PART DESCRIPTION
1	REF	1	Engine, Gasoline - Manual Start	44	815-0498	7	Screw, Tapping - Hex Head (#8-32 x 3/8")
2	403-1871	2	Bracket, Engine Mounting	49	403-1872	1	Bracket, Generator Mounting
4	870-0348	6	Nut, Hex W/ET (5/16"-18)	51	403-1915	1	Eye, Lifting
5	332-2178	1	Lug, Single Terminal	52	800-0051	6	Screw, Cap - Hex Head (3/8"-16 x 1-1/4")
6	815-0378	2	Screw, Indented - Slotted Hex W/ET (#14 x 1/2")	53	850-0050	2	Washer, Lock - Spring (3/8")
11	856-0008	1	Washer, Lock - EIT (5/16")	54	155-1851	1	Muffler, Spark Arrestor
15	337-0094	1	Strap, Bond	55	154-2253	1	Elbow, Exhaust - Left
16	870-0281	4	Nut, HWH (3/8"-16)	56	154-2254	1	Elbow, Exhaust - Right
19	332-1554	1	Clamp, Loop - insulated	57	154-1725	2	Gasket, Exhaust Elbow
29	231-0227	1	Adapter, Generator (Includes Parts Marked #)	58	800-0026	4	Screw, Cap - Hex Head (5/16"-18 x 3/4")
30	211-0341	1	Bell Assembly, End (See Separate Group for Components)	59	850-0045	4	Washer, Lock - Spring (5/16")
31	815-0494	4	Screw, Cap - Hex W/IT (3/8"-16 x 7/8")	60	155-1255	2	Clamp, Muffler
32	201-2750	1	Rotor, Wound	61	503-1072	2	Hose, Fuel (7")
33	520-0923	1	Stud, Steel	62	503-0731	4	Clamp, Hose
34	202-0674	1	Sleeve, Rotor Stud	63	149-1415	1	Filter, Fuel
35	870-0271	1	Nut, Internal Wrenching (5/16"-18)	64	502-0396	1	Coupling, Quick Disconnect (Includes Parts Marked *)
36	220-3108	1	Stator, Wound	65	502-0397	1	*Coupling, Female
37	301-5142	1	Wrapper, Receptacle Panel	66	502-0398	1	*Coupling, Male
38	815-0014	2	Washer, Lock - IT (1/4")	67	516-0196	4	#Pin, Locating - Stator to Generator Adapter
39	403-1865	1	Bracket, Generator	68	856-0010	2	Washer, Lock - EIT (3/8")
40	800-0189	4	Screw, Cap - Hex Head (1/4"-20 x 8")	69	815-0384	2	Screw, Tapping - HWH (3/8"-16 x 3/4")
41	870-0232	4	Nut, Hex W/ET (1/4"-20)	70	98-4132	1	Label, Caution
42	815-0500	6	Screw, Cap - Hex W/ET (5/16"-18 x 3/4")	71	98-4538	1	Label, Service Instructions
43	300-2278	1	Control Assembly (See Separate Group for Components)	72	98-4614	1	Label, Service Instructions
				73	98-4476	1	Label, Receptacle Panel
				74	98-4639	1	Label, Caution
				81	98-4669	1	Label, Run-Stop

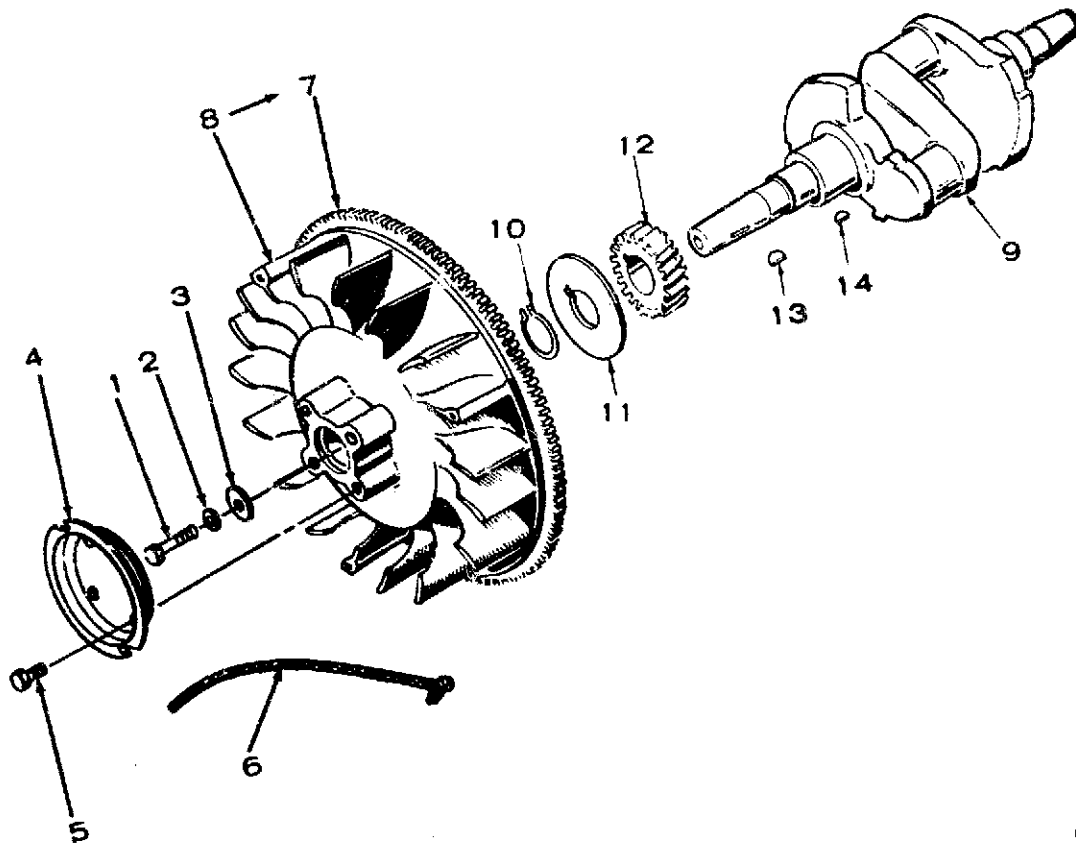
- Parts Included in the 231-0227 Generator Adapter.
 * - Parts Included in the 502-0396 Quick Disconnect Coupling.
 No part of this document by any means, is strictly prohibited.

GENERATOR SET — KEY 2



REF. NO.	PART NO.	QTY. USED	PART DESCRIPTION	REF. NO.	PART NO.	QTY. USED	PART DESCRIPTION
1	REF	1	Engine, Gasoline - Electric Start	51	403-1915	1	Eye, Lifting
2	403-1864	2	Engine, Gasoline - Electric Start	52	800-0051	6	Screw, Cap - Hex Head (3/8"-16 x 1-1/4")
4	870-0348	6	Nut, Hex W/ET (5/16"-18)	53	850-0050	2	Washer, Lock - Spring (3/8")
5	332-2178	1	Lug, Single Terminal	54	155-1851	1	Muffler, Spark Arrestor
6	815-0378	1	Screw, Indented - Slotted Hex W/ET (#14 x 1/2")	55	154-2253	1	Elbow, Exhaust - Left
15	337-0094	1	Strap, Bond	56	154-2254	1	Elbow, Exhaust - Right
16	870-0281	4	Nut, HWH (3/8-16")	57	154-1725	2	Gasket, Exhaust Elbow
18	153-0165	1	Nut, Choke Assy.	58	800-0026	4	Screw, Cap - Hex Head (5/16-18" x 3/4")
19	332-1554	1	Clamp, Loop - Insulated	59	850-0045	4	Washer, Lock - Spring (5/16")
29	231-0227	1	Adapter, Generator (Includes Parts Marked #)	60	155-1255	2	Clamp, Muffler
30	211-0341	1	Bell Assembly, End (See Separate Group for Components)	61	503-1072	2	Hose, Fuel (7")
31	815-0494	4	Screw, Cap - Hex W/IT (3/8-16" x 7/8")	62	503-0731	4	Clamp, Hose
32	201-2750	1	Rotor, Wound	63	149-1415	1	Filter, Fuel
33	520-0923	1	Stud, Steel	64	502-0396	1	Coupling, Quick Disconnect (Includes Parts Marked *)
34	202-0674	1	Sleeve, Rotor Stud	65	336-7868	1	Lead, Solenoid to Starter
35	870-0271	1	Nut, Internal Wrenching (5/16-18")	66	332-1445	4	Tie, Wire
36	220-3108	1	Stator, Wound	67	854-0014	2	Washer, Lock - IT (1/4")
38	815-0384	2	Screw, Tapping - HWH (3/8-16 x 3/4")	68	856-0010	2	Washer, Lock - EIT (3/8")
39	403-1865	1	Bracket, Generator	69	153-0165	1	Choke Assembly, Manual
40	800-0189	4	Screw, Cap - Hex Head (1/4-20" x 8")	70	98-4132	1	Label, Caution
41	870-0232	4	Nut, Hex W/ET (1/4"-20)	71	98-4616	1	Label, Service Instructions
45	REF	1	Solenoid and Bracket Assembly (See Separate Group for Components)	72	98-4615	1	Label, Service Instructions
49	403-1870	1	Bracket, Generator Mounting	73	98-4482	1	Label, Receptacle Panel
50	815-0500	2	Screw, Cap - Hex Head W/ET (5/16-18" x 3/4")	74	98-4639	2	Label, Caution
				78	502-0397	1	*Coupling, Female
				79	502-0398	1	*Coupling, Male
				81	516-0196	4	#Pin, Locating - Stator to Generator Adapter
				82	300-2344	1	Control Assembly (See Separate Group for Components)

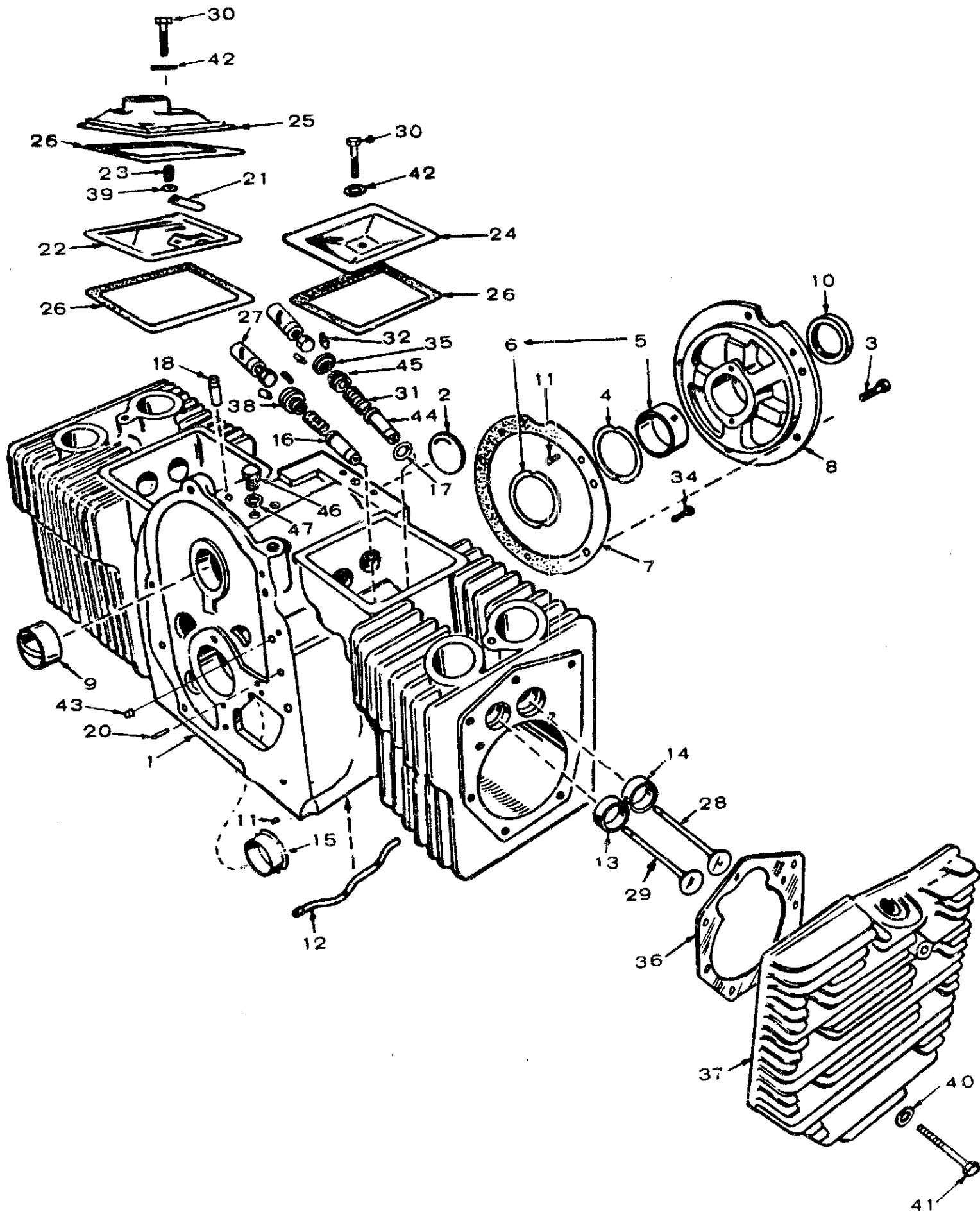
CRANKSHAFT AND FLYWHEEL



C-1074

REF. NO.	PART NO.	QTY. USED	PART DESCRIPTION
1	104-0170	1	Screw, Cap - Hex Head (7/16-14 x 4")
2	850-0055	1	Washer, Lock - Spring (7/16")
3	526-0017	1	Washer, Flat (15/32" ID x 1-1/4" OD x 1/4" Thk)
4	192-0398	1	Sheave, Rope - Key 2
5	821-0016	4	Screw, Cap - HWH (5/16-18" x 3/4") - Key 2
6	192-0399	1	Rope, Starter - Key 2
7	104-0779	1	Gear, Ring - Key 2
8	FLYWHEEL		
	134-1307	1	Key 1
	134-1301	1	Key 2 (Includes Ring Gear)
9	104-1432	1	Crankshaft
10	518-0014	1	Ring, Retaining
11	104-0043	1	Washer, Gear Retaining
12	104-0032	1	Gear, Crankshaft
13	515-0227	1	Key, Flywheel
14	515-0001	1	Key, Crankshaft Gear

CYLINDER BLOCK

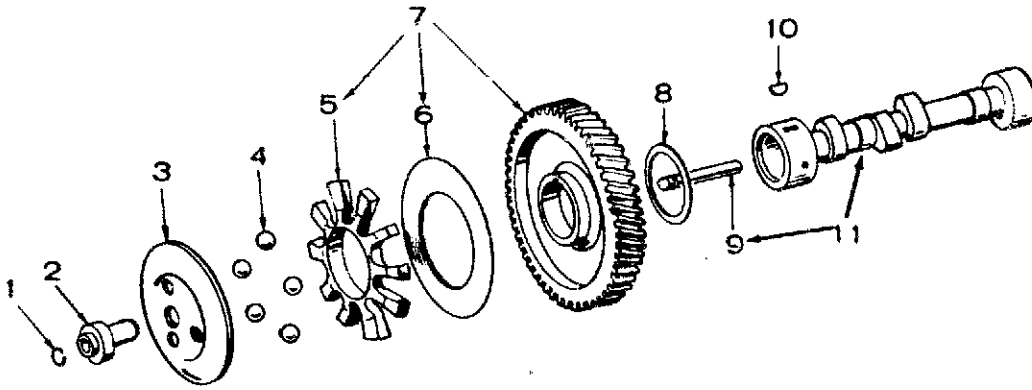


CYLINDER BLOCK

REF. NO.	PART NO.	QTY. USED	PART DESCRIPTION	REF. NO.	PART NO.	QTY. USED	PART DESCRIPTION
1	110-3154	1	Block Assembly, Cylinder (Includes parts marked *)	22	123-1173	1	Baffle, Breather Valve
2	517-0048	1	*Plug, Welch (1-5/8") Camshaft Opening	23	123-1174	1	Spring, Breather Valve
3	802-0073	5	*Screw, Cap - Socket Head (3/8-16 x 1-1/4")	24	110-1879	1	Cover, Valve
4	104-0776	As Req.	*Shim, Crankshaft End Play (.005")	25	110-2274	1	Cover, Valve
5	BEARING, CRANKSHAFT - REAR (Includes Thrust Washer)			26	110-1921	3	Gasket, Valve Cover
	101-0450	1	*Standard	27	TAPPET, VALVE		
	101-0450-02	1	.002" Undersize		115-0006	4	Standard
	101-0450-10	1	.010" Undersize		115-0006-02	4	.002" Oversize
	101-0450-20	1	.020" Undersize		115-0006-05	4	.005" Oversize
	101-0450-30	1	.030" Undersize	28	110-1808	2	Valve, Intake
6	104-0575	1	*Washer, Thrust	29	110-1955	2	Valve, Exhaust
7	101-0415	1	*Gasket, Bearing Plate	30	800-0010	2	Screw, Cap - Hex Head (1/4-20 x 1-3/4")
8	101-0599	1	Plate, Bearing - Rear	31	110-0539	4	Spring, Valve
9	101-0405	2	*Bearing, Camshaft	32	110-0639	8	Lock, Valve Spring
10	509-0041	1	*Seal, Oil - Crankshaft Rear	34	803-0067	8	Screw, Set - Socket Head (3/8-16 x 5/16")
11	516-0072	4	*Pin, Drive - Bearing Stop	35	110-0893	2	Washer, Intake Valve
12	120-0735	1	*Tube, Oil - Cylinder Block	36	110-0892	2	Gasket, Cylinder Head
13	INSERT, VALVE SEAT - EXHAUST			37	HEAD, CYLINDER		
	110-1824	2	*Standard		110-2562	1	Right Side
	110-1824-02	2	.002" Oversize		110-2561	1	Left Side
	110-1824-05	2	.005" Oversize	38	110-0904	2	Roto Cap - Exhaust Valve
	110-1824-10	2	.010" Oversize	39	526-0018	1	Washer, Flat (17/64" ID x 5/8" OD x 1/16" Thk)
	110-1824-25	2	.025" Oversize	40	526-0122	18	Washer, Flat (11/32" ID x 23/32" OD x 10 Ga. Thk)
14	INSERT, VALVE SEAT - INTAKE			41	SCREW, CAP - HEX HEAD (Special)		
	110-0197	2	*Standard		800-0540	12	5/16-18 x 1-5/8"
	110-0197-02	2	.002" Oversize		800-0541	6	5/16-18 x 2"
	110-0197-05	2	.005" Oversize	42	526-0063	2	Washer, Flat - Copper (17/64" ID x 7/16" OD x 1/32" Thk)
	110-0197-10	2	.010" Oversize				
	110-0197-25	2	.025" Oversize	43	517-0067	1	Plug, Core Hole
15	BEARING, CRANKSHAFT - FRONT (Flanged)			44	110-3159	2	*Guide, Valve - Intake
	101-0432	1	*Standard	45	509-0168	2	Seal, Valve Stem - Intake
	101-0432-02	1	.002" Undersize	46	800-0003	2	Screw, Cap - Hex Head (1/4-20 x 1/2") - Key 1
	101-0432-10	1	.010" Undersize				
	101-0432-20	1	.020" Undersize	47	526-0063	2	Washer, Flat - Copper (17/64" ID x 7/16" OD x 1/32") - Key 1
	101-0432-30	1	.030" Undersize				
16	110-1807	2	*Guide, Valve - Exhaust				
17	110-3136	2	*Gasket, Intake Valve Guide				
18	149-1299	1	*Tube, Vacuum Port				
20	516-0141	2	*Pin, Gearcase Alignment				
21	123-1175	1	Reed, Breather Valve				

* - Parts Included in the 110-3154 Cylinder Block Assembly.

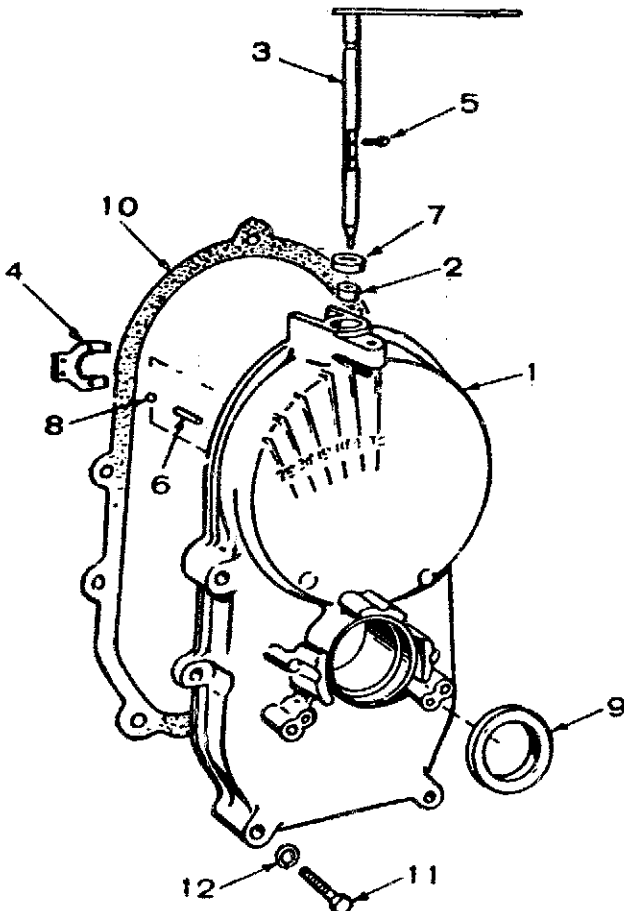
CAMSHAFT



C-1056

REF. NO.	PART NO.	QTY. USED	PART DESCRIPTION
1	150-0078	1	Ring, Retaining
2	150-1519	1	Hub, Governor Cup
3	150-1520	1	Cup, Governor
4	510-0015	5	Ball, Governor
5	150-1257	1	Spacer, Flyball
6	150-0077	1	Plate, Flyball
7	105-0332	1	Gear, Camshaft (Includes Spacer and Plate)
8	105-0541	1	Washer, Thrust
9	150-0075	1	Pin, Center
10	515-0001	1	Key, Woodruff - Camshaft Gear
11	105-0402	1	Camshaft (Includes Center Pin)

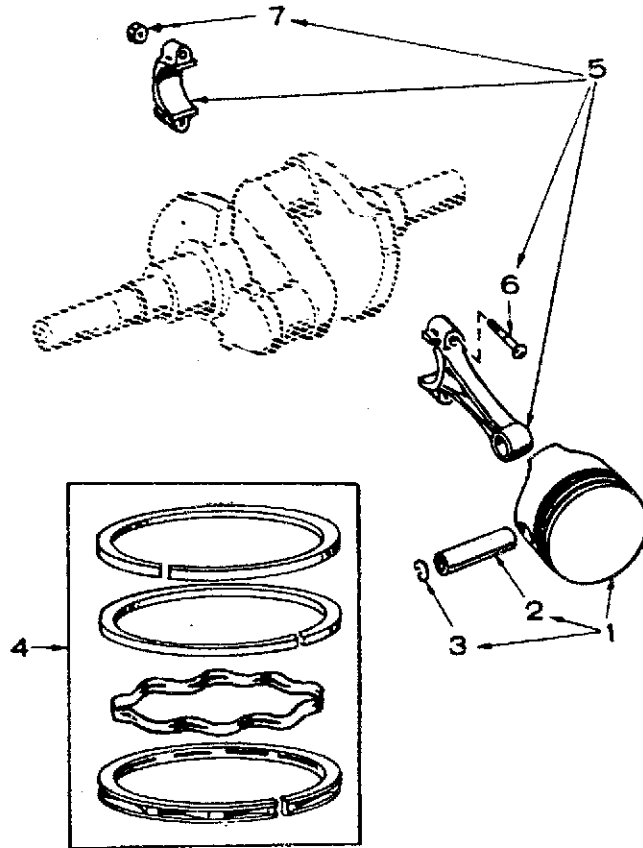
GEARCASE



REF. NO.	PART NO.	QTY. USED	PART DESCRIPTION
1	103-0663	1	Gearcase Assembly (Includes parts marked *)
2	510-0105	1	*Bearing, Governor Shaft
3	150-1470	1	*Shaft and Arm, Governor
4	150-1187	1	*Yoke, Governor Shaft
5	815-0046	2	*Screw, Machine - Pan Head (#8-32 x 3/8")
6	516-0130	1	*Pin, Dowel - Governor Cup Stop
7	509-0008	1	*Seal, Oil - Governor Shaft
8	510-0014	1	*Ball, Bearing - Governor Shaft
9	509-0040	1	*Seal, Oil - Crankshaft
10	103-0408	1	Gasket, Gearcase Mounting
11	SCREW, CAP - HEXHEAD		
	800-0032	4	5/16-18 x 1-3/4"
	800-0545	1	5/16-18 x 2-3/4" (Special)
12	526-0065	5	Washer, Flat - Copper (21/64" ID x 9/16" OD x 1/16" Thk)

* - Included in 103-0663 Gearcase Assembly

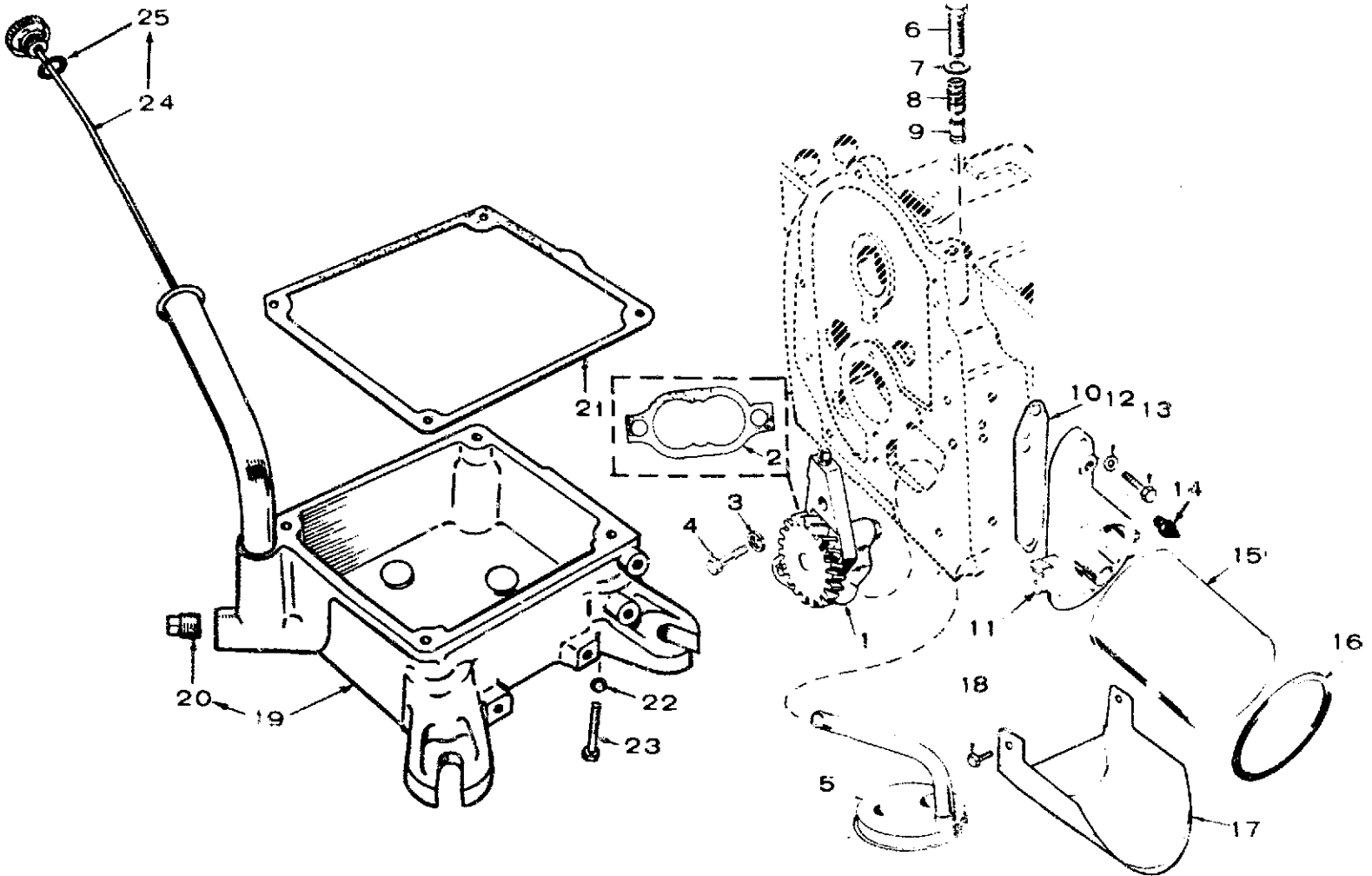
PISTON AND ROD



CT-1032

REF. NO.	PART NO.	QTY. USED	PART DESCRIPTION
1	PISTON AND PIN (Includes Retaining Rings)		
	112-0186	2	Standard
	112-0186-05	2	.005" Oversize
	112-0186-10	2	.010" Oversize
	112-0186-20	2	.020" Oversize
	112-0186-30	2	.030" Oversize
	112-0186-40	2	.040" Oversize
2	112-0122	2	Pin, Piston
3	518-0311	4	Ring, Retaining
4	RING SET, PISTON		
	113-0189	2	Standard
	113-0189-05	2	.005" Oversize
	113-0189-10	2	.010" Oversize
	113-0189-20	2	.020" Oversize
	113-0189-30	2	.030" Oversize
	113-0189-40	2	.040" Oversize
5	ROD, CONNECTING (Includes Bolt and Nut)		
	114-0300	2	Standard
	114-0300-10	2	.010" Undersize
	114-0300-20	2	.020" Undersize
	114-0300-30	2	.030" Undersize
6	114-0240	4	Bolt, Special - Connecting Rod
7	870-0137	4	Nut, Hex - Self-Locking (5/16-24)

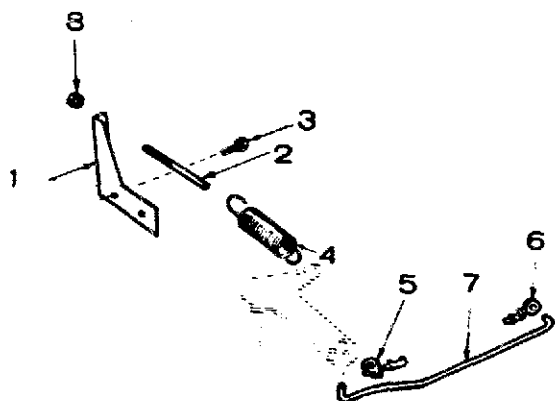
OIL SYSTEM



LS-1089

REF. NO.	PART NO.	QTY. USED	PART DESCRIPTION	REF. NO.	PART NO.	QTY. USED	PART DESCRIPTION
1	120-0491	1	Pump, Oil (Components not sold separately)	13	800-0028	2	Screw, Cap - Hex Head (5/16-18 x 1") - Key 1
2	120-0161	1	Gasket Kit, Oil Pump	14	309-0237	1	Switch, Oil Pressure
3	850-0040	2	Washer, Lock Spring (1/4")	15	122-0406	1	Filter, Oil - Key 1
4	800-0007	2	Screw, Cap - Hex Head (1/4-20 x 1")	16	122-0347	1	Seal, Air-Filter to Housing - Key 1
5	120-0713	1	Cup, Intake - Oil Pump	17	122-0360	1	Drain, Oil Filter - Key 1
6	801-0050	1	Screw, Cap - Hex Head (3/8-24 x 1")	18	815-0194	2	Screw, Cap - Hex Head w/ET (#10-32 x 3/8") - Key 1
7	526-0066	1	Washer, Flat - Copper (25/64" ID x 9/16" OD x 1/16" Thk)	19	102-0812	1	Base, Oil
8	120-0140	1	Spring, Bypass Valve	20	505-0056	1	Plug, Pipe - Oil Drain
9	120-0398	1	Plunger, Bypass Valve	21	102-0693	1	Gasket, Oil Base
10	122-0321	1	Gasket, Oil Filter Adapter - Key 1	22	850-0050	4	Washer, Lock - Spring (3/8")
11	122-0320	1	Adapter, Oil Filter - Key 1	23	800-0056	4	Screw, Cap - Hex Head (3/8-16 x 2-1/2")
12	526-0065	2	Washer, Flat - Copper (21/64" ID x 9/16" OD x 1/16" Thk) - Key 1	24	123-1340	1	Cap and Indicator, Oil Fill
				25	509-0142	1	Gasket, Oil Fill Cap ("O" Ring)

GOVERNOR

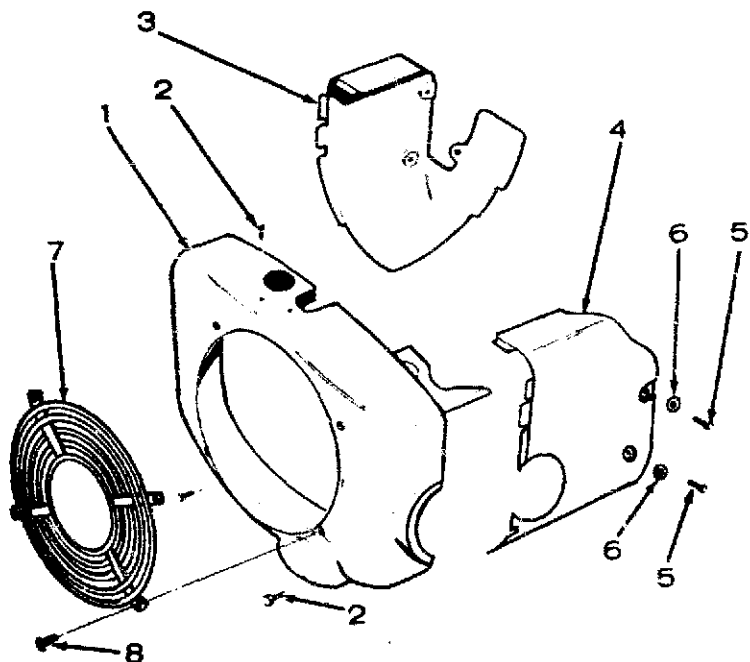


REF. NO.	PART NO.	QTY. USED	PART DESCRIPTION
1	150-1433	1	Bracket, Governor Control
2	150-0694	1	Stud, Adjusting
3	821-0010	2	Screw, Cap - Hex Head Locking (1/4-20 x 1/2")
4	150-1214	1	Spring, Governor
5	870-0278	1	Clip, Retaining - Control Rod
6	518-0004	1	Clip, Retaining - Control Rod
7	150-1350	1	Rod, Control
8	870-0131	1	Nut, Governor Adjusting

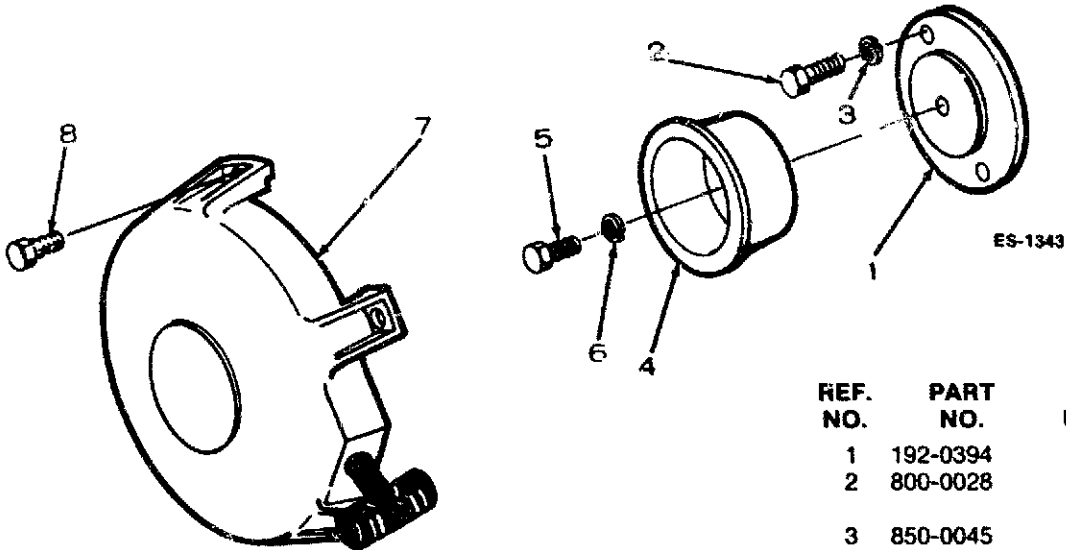
FS-3371

AIR HOUSING

REF. NO.	PART NO.	QTY. USED	PART DESCRIPTION
1	HOUSING, BLOWER		
	134-3596	1	Key 1
	134-4136	1	Key 2
2	815-0261	3	Screw, Cap - Hex Head (1/4-20 x 7/16")
3	134-2989	1	Housing, Cylinder Air - Left Side
4	HOUSING, CYLINDER AIR - RIGHT SIDE		
	134-3705	1	Key 1
	134-3400	1	Key 2
5	815-0290	4	Screw, Cap - Hex Head (1/4-20 x 5/8")
6	526-0021	4	Washer, Flat (17/64" ID x 3/4" OD x 1/16" Thk)
7	GUARD, STATIONARY		
	134-4234	1	Key 1
	134-4134	1	Key 2
8	SCREW, CAP		
	815-0290	4	HWH (1/4-20" x 5/8") - Key 1
	815-0378	4	Hex w/ET (#14 x 1/2") - Key 2

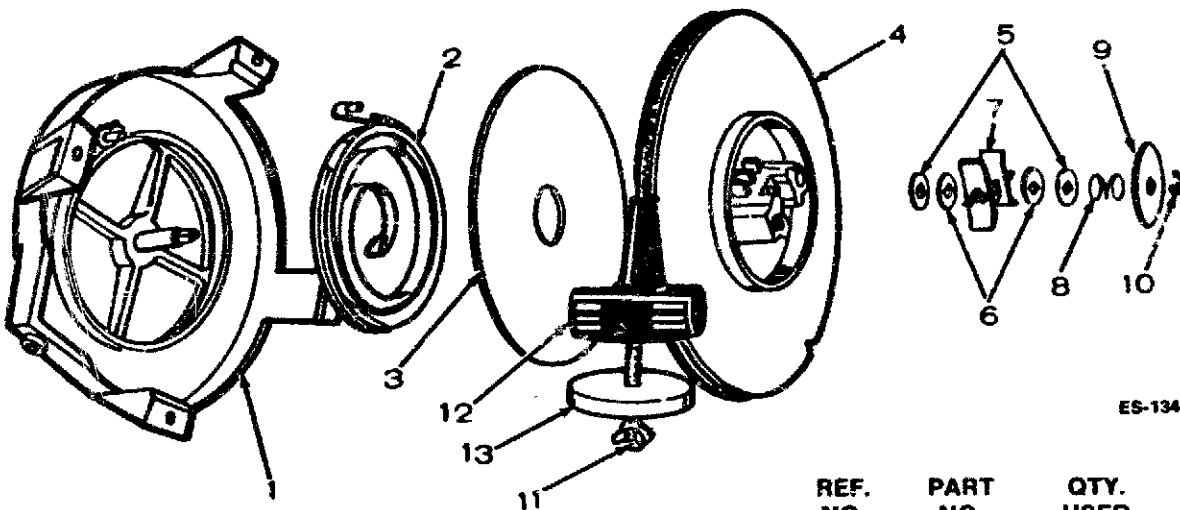


RECOIL STARTER - KEY 1



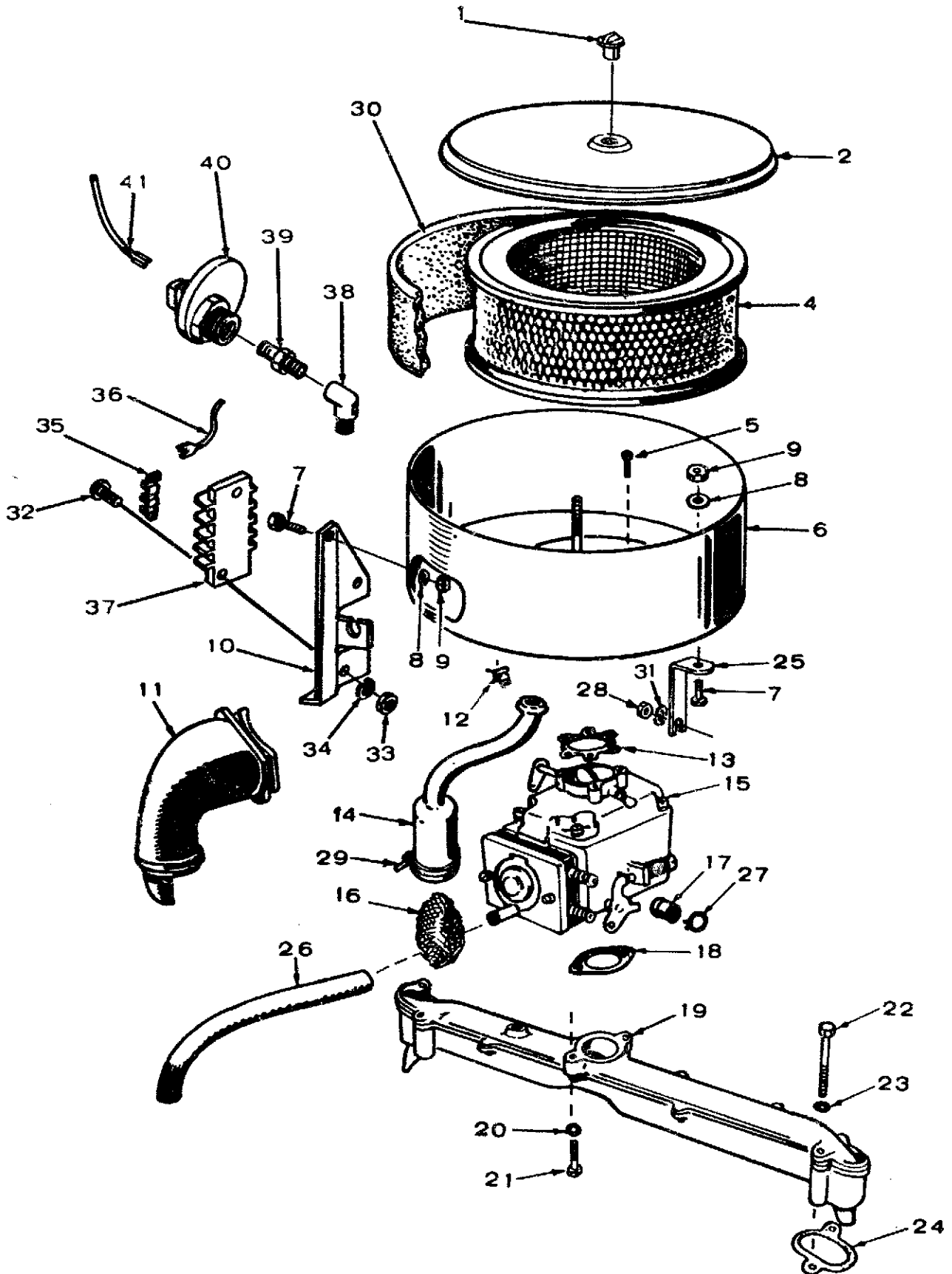
REF. NO.	PART NO.	QTY. USED	PART DESCRIPTION
1	192-0394	1	Adapter, Starter Cap
2	800-0028	2	Screw, Cap - Hex Head (5/16-18" x 1")
3	850-0045	2	Washer, Lock - Spring (5/16")
4	192-0396	1	Cup, Starter
5	800-0542	1	Screw, Pilot (7/16-14" x 1")
6	850-0050	1	Washer, Lock - Spring (3/8")
7	192-0392	1	Starter, Recoil (See Separate Group for Components)
8	815-0223	4	Screw, Cap - Hex Head W/Lock Washer (1/4-20" x 5/8")

RECOIL STARTER PARTS - KEY 1



REF. NO.	PART NO.	QTY. USED	PART DESCRIPTION
	192-0392	1	Starter, Recoil - Complete
1	192-0422	1	Cover, Starter
2	192-0421	1	Spring, Rewind
3	192-0420	1	Shield, Spring
4	192-0419	1	Rotor
5	192-0418	2	Washer, Steel
6	192-0417	2	Washer, Fibre
7	192-0416	1	Shoe Assembly, Friction
8	192-0415	1	Spring, Brake
9	526-0142	1	Washer, Fiat
10	518-0205	1	Ring, Snap
11	192-0412	1	Cord, Pull
12	192-0411	1	Handle, Pull
13	192-0410	1	Insert, Handle

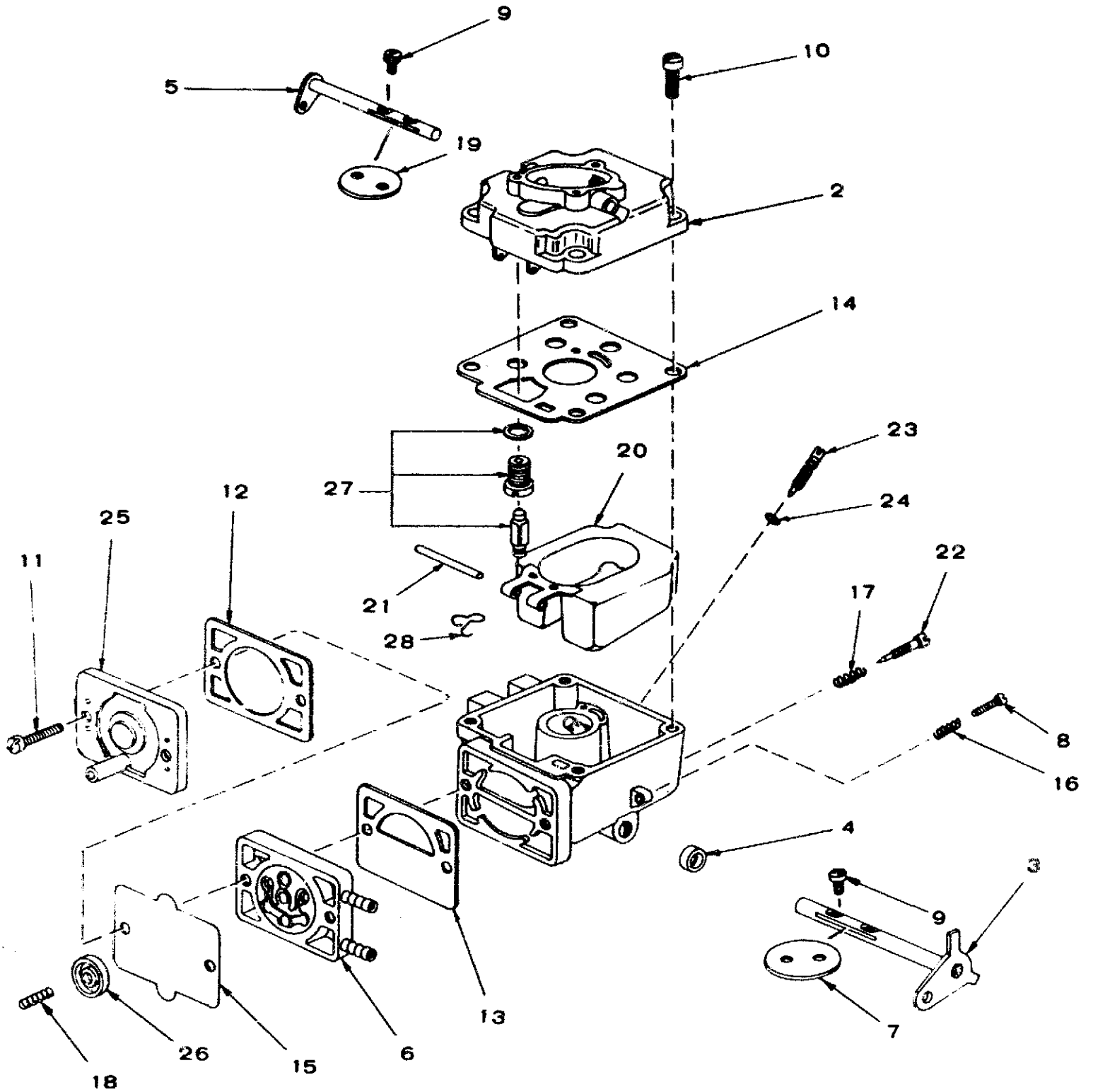
FUEL SYSTEM



FUEL SYSTEM

REF. NO.	PART NO.	QTY. USED	PART DESCRIPTION	REF. NO.	PART NO.	QTY. USED	PART DESCRIPTION
1	140-1750	1	Nut, Cover (1/4-20)	22	800-0033	4	Screw, Cap - Hex Head (5/16-18 x 2")
2	140-1747	1	Cover, Air Cleaner	23	850-0045	4	Washer, Lock - Spring (5/16")
4	140-1216	1	Filter, Air (Paper)	24	154-1744	2	Gasket, Manifold to Block
5	815-0463	3	Screw, Machine - Slotted Head (#10-32 x 3/8")	25	140-1313	1	Support, Air Cleaner
6	140-1213	1	Housing, Air Cleaner	26	503-0740	1	Hose, Fuel Pump Vacuum
7	800-0003	2	Screw, Cap - Hex Head (1/4-20" x 1/2")	27	503-0301	1	Clamp, Loop
8	853-0013	3	Washer, Lock - ET (1/4")	28	NUT, HEX (5/16-18")	1	Self Locking - Key 1
9	862-0001	2	Nut, Hex (1/4-20)		862-0015	1	HWH - Key 2
10	140-1644	1	Support, Air Cleaner	29	332-0941	1	Tie, Breather Tube
11	140-1549	1	Tube, Air Intake	30	140-1259	1	Wrapper, Air Cleaner Element
12	518-0328	2	Clip, Cable	31	856-0008	1	Washer, Lock - EIT (5/16") - Key 1
13	140-1215	1	Gasket, Air Cleaner to Carburetor	32	812-0081	2	Screw, Machine - Round Head (#8-32 x 5/8")
14	123-1277	1	Tube, Crankcase Breather	33	860-0008	2	Nut, Hex (#8-32)
15	142-0638	1	Carburetor Assembly (See Separate Group for Components) (Includes Mounting Gasket)	34	853-0005	2	Washer, Lock - EIT (#8)
16	123-0865	1	Filter, Breather Tube	35	332-1043	3	Jumper, Terminal
17	149-1321	1	Cap, Fuel Outlet	36	336-8465	1	Lead, Vacuum Switch to Terminal Block (6")
18	145-0438	1	Gasket, Carburetor Mounting	37	332-0537	1	Block, Terminal (4 Place)
19	154-2339	1	Manifold, Intake	38	502-0020	1	Elbow, Street
20	850-0040	2	Washer, Lock - Spring (1/4")	39	502-0815	1	Nipple, Hex - Restricted
21	800-0023	2	Screw, Cap - Hex Head (1/4-20 x 1-3/8")	40	148-0367	1	Switch, Vacuum
				41	336-8464	1	Lead, Vacuum Switch to Oil Pressure Switch (18")

CARBURETOR PARTS (With Integral Fuel Pump)



FS-1372

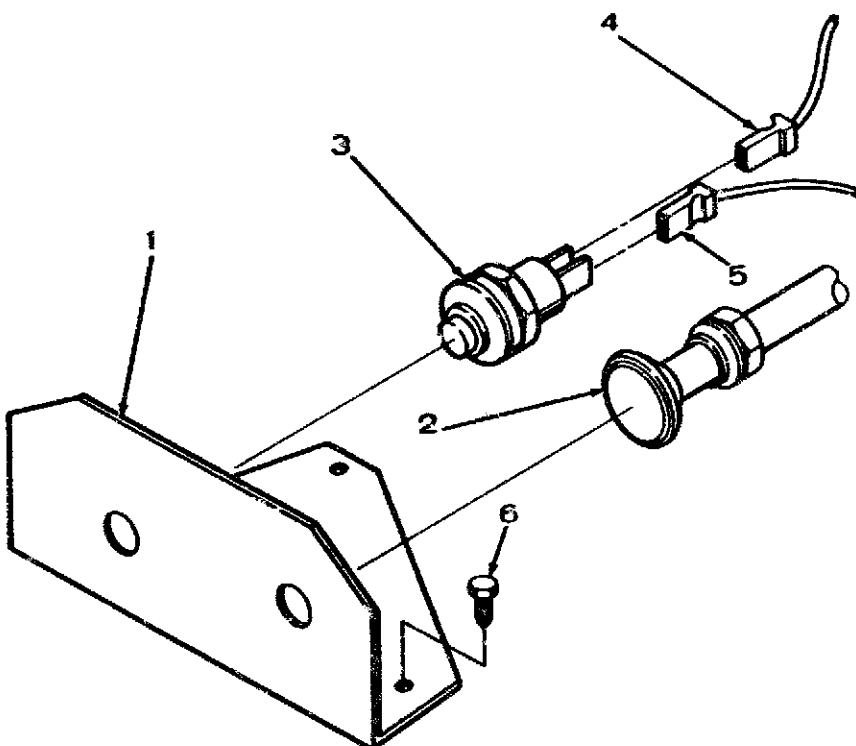
CARBURETOR PARTS (With Integral Fuel Pump)

REF. NO.	PART NO.	QTY. USED	PART DESCRIPTION	REF. NO.	PART NO.	QTY. USED	PART DESCRIPTION
	142-0638	1	Carburetor, Complete (With Integral Fuel Pump)	13	142-0542	1	†Gasket, Inlet Plate
	142-0571	1	*Gasket Set (Includes parts marked †)	14	142-0572	1	†Gasket, Carburetor Body
	142-0570	1	Repair Kit (Includes parts marked *)	15	142-0555	1	†Diaphragm, Fuel Pump
		1	Body, Lower	16	142-0544	1	Spring, Throttle Stop
2	142-0573	1	Body, Upper	17	142-0282	1	*Spring, Idle Needle
3	142-0534	1	*Shaft, Throttle	18	142-0545	1	*Spring, Fuel Pump
4	142-0535	1	†"O" Ring, Throttle Shaft Seal	19	142-0546	1	Fly, Choke
5	142-0536	1	Shaft, Choke	20	142-0547	1	Float Assembly
6	142-0537	1	*Valve Assembly, Reed Fuel Pump	21	142-0548	1	*Shaft, Float
7	142-0538	1	Fly, Throttle	22	142-0016	1	*Needle, Idle
8	142-0064	1	Screw, Throttle Stop	23	142-0549	1	Needle, Power
9	142-0334	4	*Screw, Fly to Shaft	24	142-0550	1	†"O" Ring, Seal - Power Needle
10	142-0539	4	Screw, Upper to Lower Body	25	142-0551	1	Cover, Pump
11	142-0540	2	Screw, Pump Cover to Body	26	142-0552	1	*Plate, Drive - Fuel Pump
12	142-0541	1	†Gasket, Pump Cover	27	142-0553	1	*Valve Assembly, Float
				28	142-0554	1	Clip, Retaining - Float Valve

† - Parts included in 142-0571 Gasket Set.

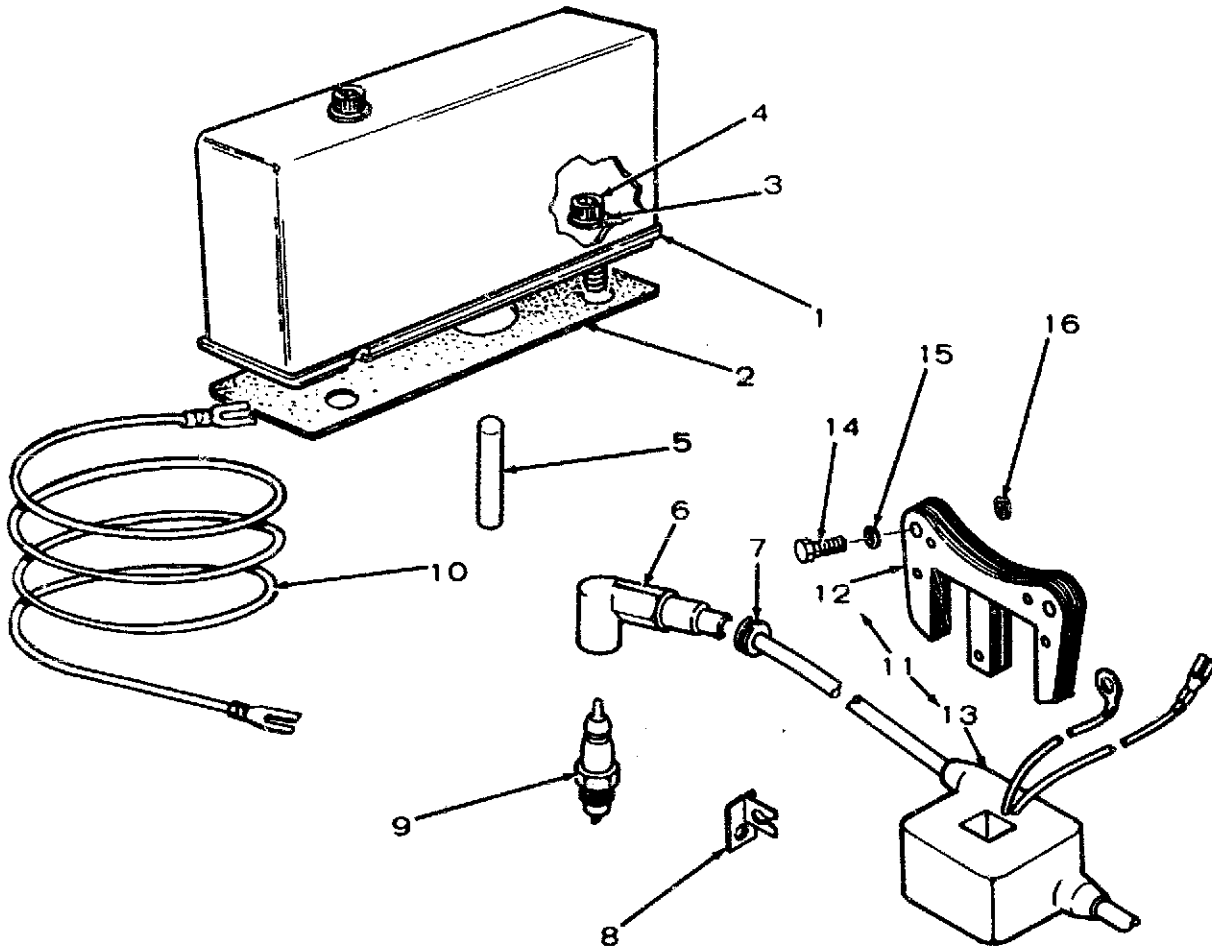
* - Parts included in 142-0570 Repair Kit.

CHOKE AND STOP SWITCH ASSEMBLY KEY 1



REF. NO.	PART NO.	QTY. USED	PART DESCRIPTION
1	153-0551	1	Bracket, Choke and Switch
2	153-0549	1	Cable, Choke
3	308-0663	1	Switch, Stop
4	336-8936	1	Lead, Stop Switch (9")
5	336-8937	1	Lead, Stop Switch (17")
6	815-0439	3	Screw, Tapping - HWH (#8 x 1/2")

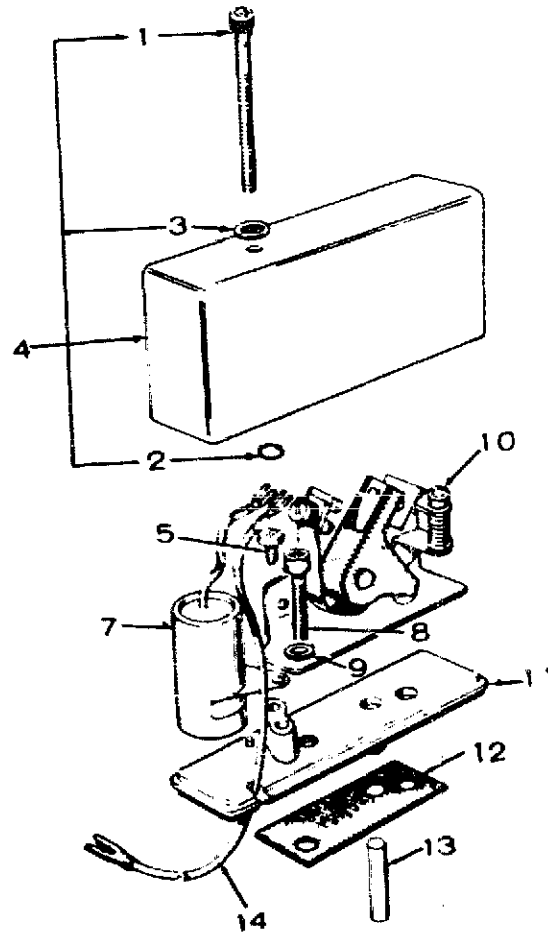
IGNITION SYSTEM



ES-1236

REF. NO.	PART NO.	QTY. USED	PART DESCRIPTION
1	160-1303	1	Box Assembly, Breaker (See Separate Group for Components) (Includes Mounting Gasket)
2	160-1150	1	Gasket, Breaker Box Mounting
3	850-0038	2	Washer, Lock - Spring (1/4")
4	802-0034	2	Screw, Socket Head (1/4-20 x 3/4")
5	160-1151	1	Plunger, Breaker Points
6	167-1595	2	Cable, Spark Plug
7	508-0095	2	Grommet, Rubber
8	167-0188	4	Clip, Spark Plug Cable
9	167-0298	2	Plug, Spark
10	336-8466	1	Lead, Breaker Box to Terminal Block (13")
11	160-1306	1	Coil and Core Assembly, Magneto
12	160-0749	1	Core, Magneto
13	160-1305	1	Coil, Magneto
14	815-0259	2	Screw, Tapping - Hex Head (1/4-20 x 1-1/4")
15	526-0184	2	Washer, Flat (17/64" ID x 5/8" OD x 10 Ga.)
16	526-0015	2	Washer, Flat (9/32" ID x 9/16" OD x 1/16")

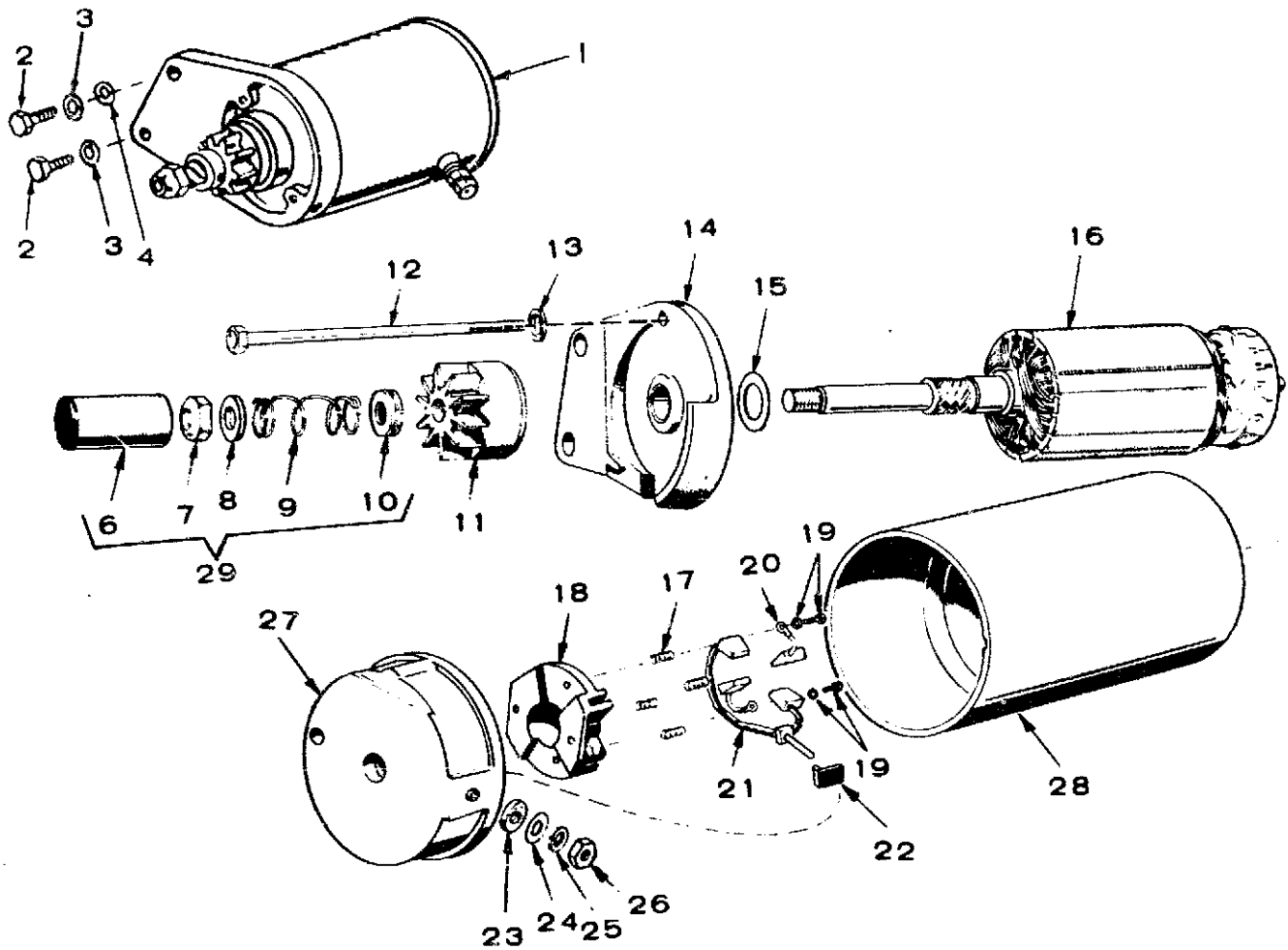
IGNITION BREAKER BOX



REF. NO.	PART NO.	QTY. USED	PART DESCRIPTION
	160-1303	1	Breaker Box (Includes Parts Marked *)
1	802-0022	1	*Screw, Cap - Hex Socket (#10-24 x 1-1/2")
2	509-0065	1	*Retainer ("O" Ring)
3	526-0008	1	*Flat Washer (13/64" ID x 7/16" OD x 1/32" Thk)
4	160-1285	1	*Cover, Breaker Box
5	815-0358	1	*Cap Screw (#8-32 x 5/16-6 Slotted)
7	312-0244	1	*Condenser
8	802-0034	2	*Cap Screw (1/4-20 x 3/4") Socket Head
9	850-0038	2	*Lock Washer (1/4")
10	160-1183	1	*Point Set, Breaker
11	160-1219	1	*Base, Breaker
12	160-1150	1	*Gasket Breaker Box
13	160-1151	1	Plunger, Breaker Points
14	336-8466	1	Lead, Breaker Box to Terminal Block
	160-1213		Tune Up Kit (Includes Points and Condenser)

* - Parts Included in 160-1303 Breaker Box

STARTER MOTOR PARTS — KEY 2



REF. NO.	PART NO.	QTY. USED	PART DESCRIPTION	REF. NO.	PART NO.	QTY. USED	PART DESCRIPTION
1	191-1171	1	Starting Motor, Complete	19	#	2	+Screw and Lock Washer
2	800-0552	2	Screw, Cap - Hex Head (5/16-18 x 1")	20	#	2	*+Brush, Ground
3	850-0045	2	Washer, Lock - Spring (5/16")	21	#	1	*+Stud and Brush Assembly, Input
4	526-0113	1	Washer, Flat (11/32" ID x 1" OD x 3/32" Thk)	22	#	1	+Brushing, Insulation
6	#	1	°Cover Dust	23	#	1	Washer, Insulation
7	#	1	°Nut, Stop	24	#	1	+Washer, Flat
8	#	1	°Washer, Flat	25	#	1	+Washer, Lock
9	#	1	°Spring, Anti-Drift	26	#	1	+Nut
10	#	1	°Spacer, Dust Cover	27	191-1040	1	Cap Assembly, Commutator (Includes Parts Marked +)
11	191-1156	1	Drive Assembly	28	#	1	Housing
12	191-1220	2	Screw, Cap - Hex Head	29	191-1359	1	Service Package (Includes Parts Marked °)
13	850-0040	2	Washer, Lock - Spring (1/4')		191-1222	1	Repair Pkg. (Includes Parts Marked *)
14	191-1219	1	Cap Assembly, Drive End				
15	191-1038	1	Washer, Armature Thrust				
16	191-1221	1	Armature				
17	#	4	*+Spring				
18	#	1	+Brush Holder				

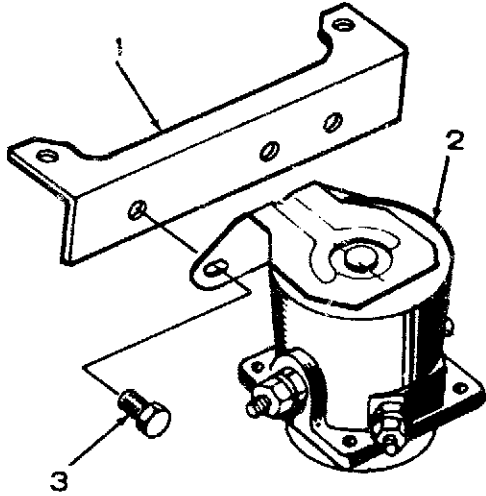
+ - Parts included in 191-1040 Cap Assembly.

* - Parts included in 191-1222 Repair Package.

- Not Sold Separately.

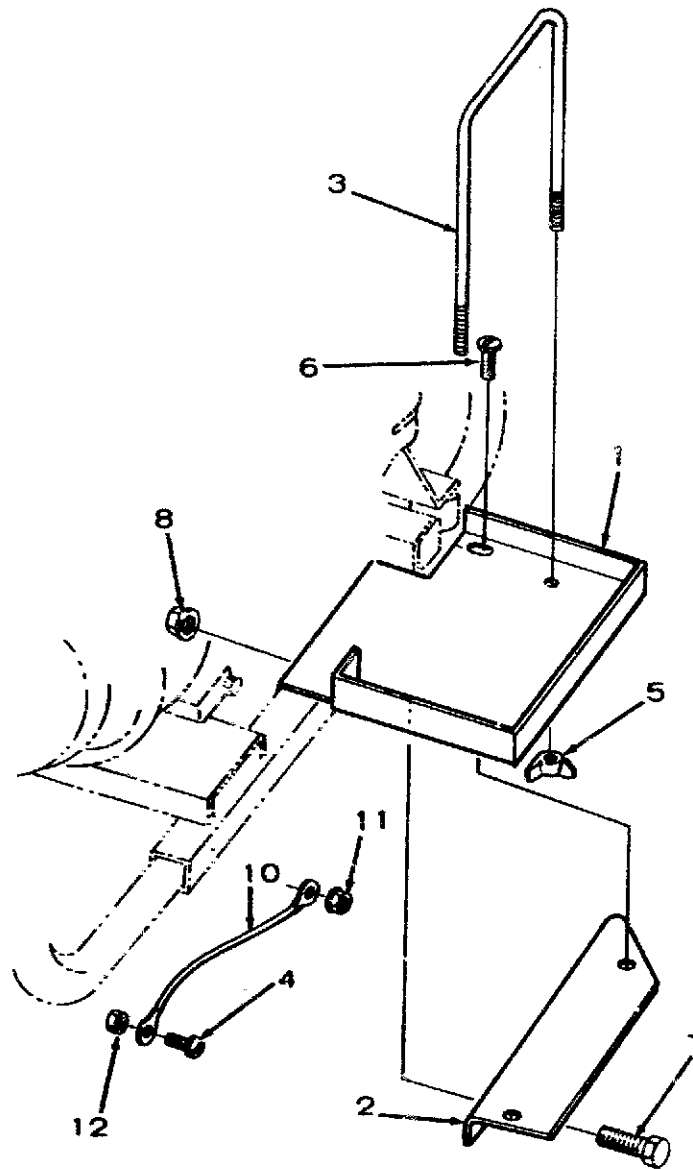
° - Parts included in 191-1359 Service Package.

SOLENOID AND BRACKET ASSEMBLY KEY 2



REF. NO.	PART NO.	QTY. USED	PART DESCRIPTION
1	307-1981	1	Bracket, Start Solenoid
2	307-1498	1	Solenoid, Start
3	821-0009	2	Screw, Cap - HWH (1/4"-20 x 3/8")

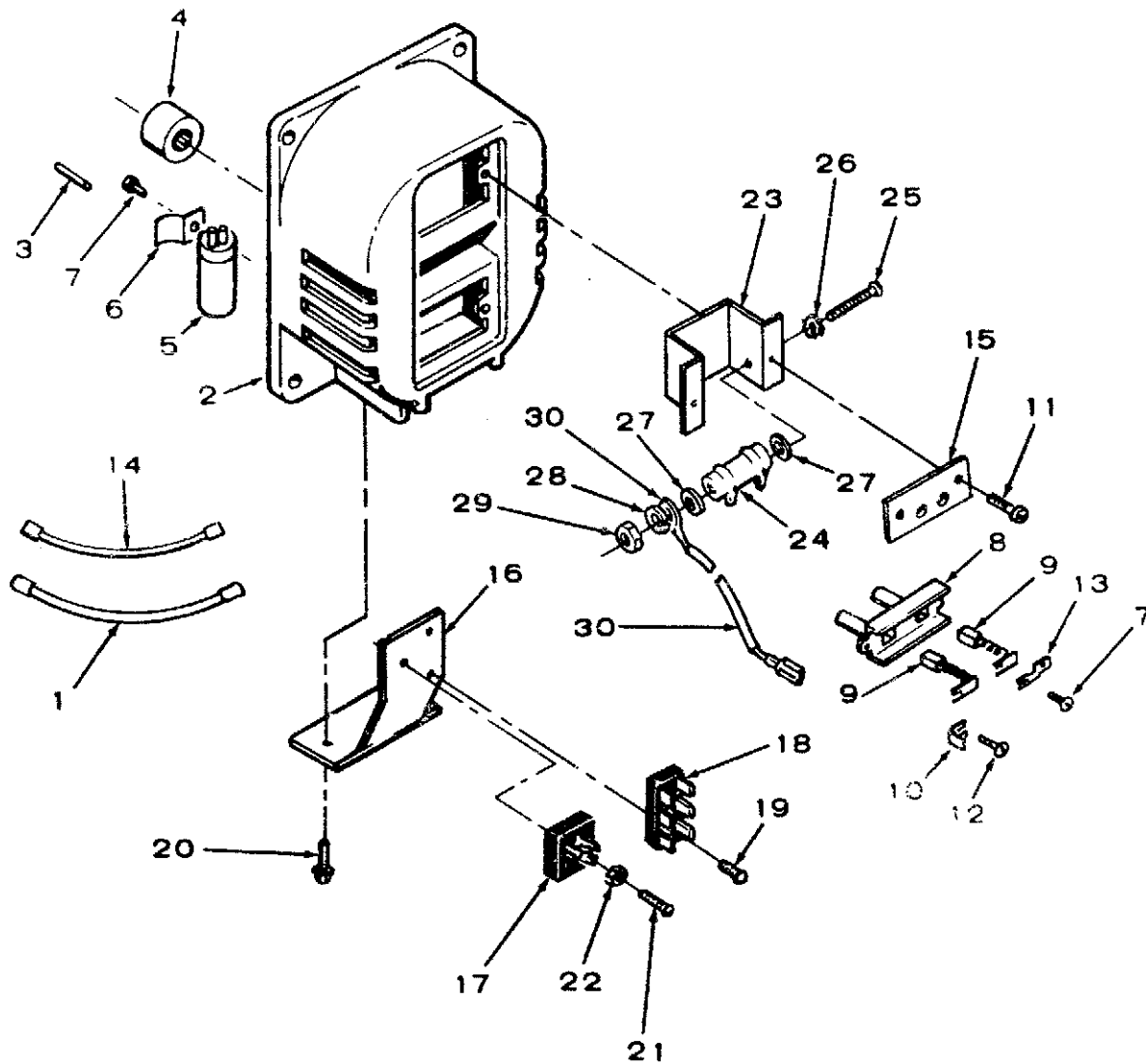
BATTERY TRAY - KEY 2



ES-1240

REF. NO.	PART NO.	QTY. USED	PART DESCRIPTION
	416-0784	1	Battery Tray Kit
1	416-0782	1	Tray, Battery
2	416-0781	1	Support, Battery Tray
3	416-0785	1	Holddown, Battery
4	810-0151	2	Screw, Machine - Round Head Brass (1/4"-20 x 3/4")
5	865-0011	2	Nut, Wing (#10-32)
6	815-0261	2	Screw, Tapping - HWH (1/4"-20 x 1/2")
7	800-0033	3	Screw, Cap - Hex Head (5/16"-18 x 2")
8	870-0257	3	Nut, HWH (5/16"-18)
10	336-7866	2	Lead, Battery (6")
11	870-0232	1	Nut, Hex w/ET (1/4"-20)
12	871-0018	2	Nut, Hex - Brass (1/4"-20)

END BELL ASSEMBLY



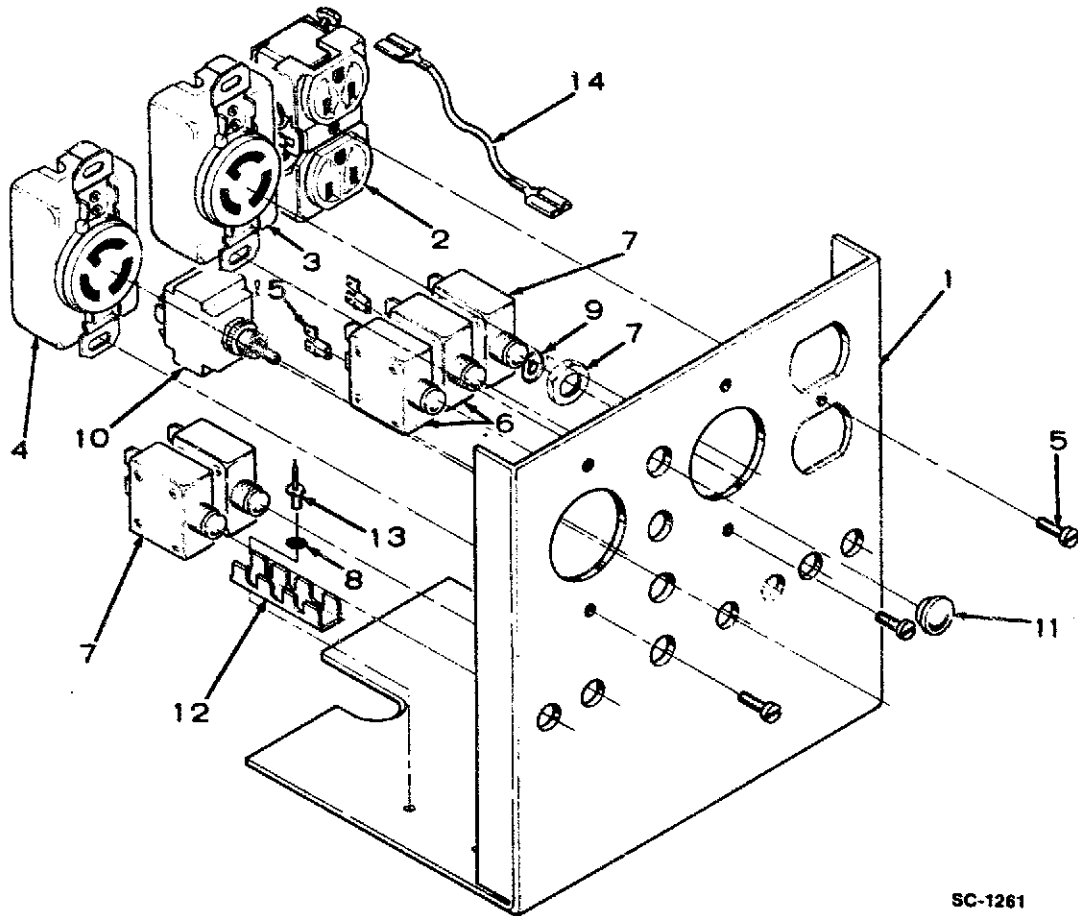
M-1298

REF. NO.	PART NO.	QTY. USED	PART DESCRIPTION	REF. NO.	PART NO.	QTY. USED	PART DESCRIPTION
	211-0341	1	End Bell Assembly, Complete (Includes Parts Marked +)	17	305-0548	1	+Bridge, Rectifier
1	+LEAD, BRUSH			18	332-2139	1	+Terminal, Tab
	336-7518	1	Negative Brush to Tab Terminal	19	818-0178	2	+Rivet, Dome Head (Aluminum) (1/8" x 3/16")
	336-2847	1	Positive Brush to Rectifier	20	815-0340	2	+Screw, Cap - HWH (#10-32 x 3/8")
2	211-0313	1	+Bell, End	21	815-0198	1	+Screw, Tapping - Round Head (#8-32 x 5/8")
3	516-0196	4	+Pin, Locating - End Bell	22	860-0008	1	+Nut, Hex (#8-32)
4	510-0107	1	+Bearing, Roller	23	232-2901	1	Bracket, Resistor Mounting - Key 2
5	356-0056	1	+Capacitor	24	304-0217	1	Resistor, Fixed (10 Ohm, 10 Watt) - Key 2
6	312-0194	1	+Bracket, Capacitor Mounting	25	812-0091	1	Screw, Machine - Round Head (#8-32 x 2-1/2") - Key 2
7	815-0395	1	+Screw, Tapping - Pan Head (#6 x 3/8")	26	853-0005	1	Washer, Lock - EIT (#8) Key 2
8	212-1249	1	+Guide, Brush	27	526-0006	2	Washer, Flat (15/64" ID x 1/2" OD x 3/64")
9	214-0099	2	+Brush	28	850-0025	1	Washer, Lock (#8) - Key 2
10	332-1564	1	+Terminal, Tab	29	860-0008	1	Nut, Hex (#8-32) - Key 2
11	815-0395	2	+Screw, Tapping - Pan Head (#6 x 3/8") - Key 2	30	336-9306	1	Lead, Resistor to B+ - Key 2
12	815-0466	1	+Screw, Cap - Hex Head (#6 x 5/8")				
13	332-2194	2	+Terminal, Tab				
14	+LEAD, CAPACITOR						
	336-3254	1	3-1/4"				
	336-4251	1	3"				
15	211-0345	1	+Plate Guard - Key 2				
16	232-2840	1	+Bracket, Rectifier				

+ - Parts Included in the 211-0341 End Bell Assembly

Redistribution or publication of this document by any means, is strictly prohibited.

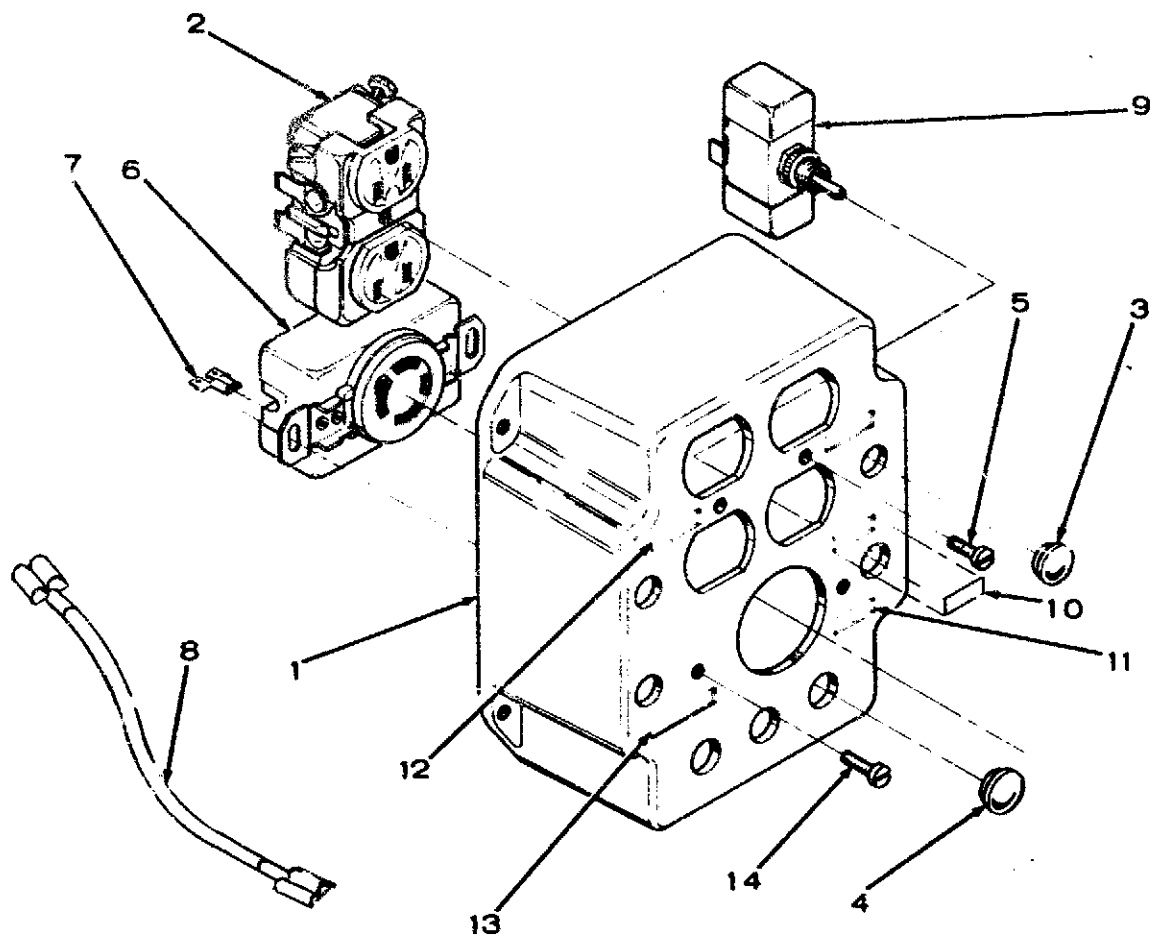
CONTROL ASSEMBLY - KEY 1



SC-1261

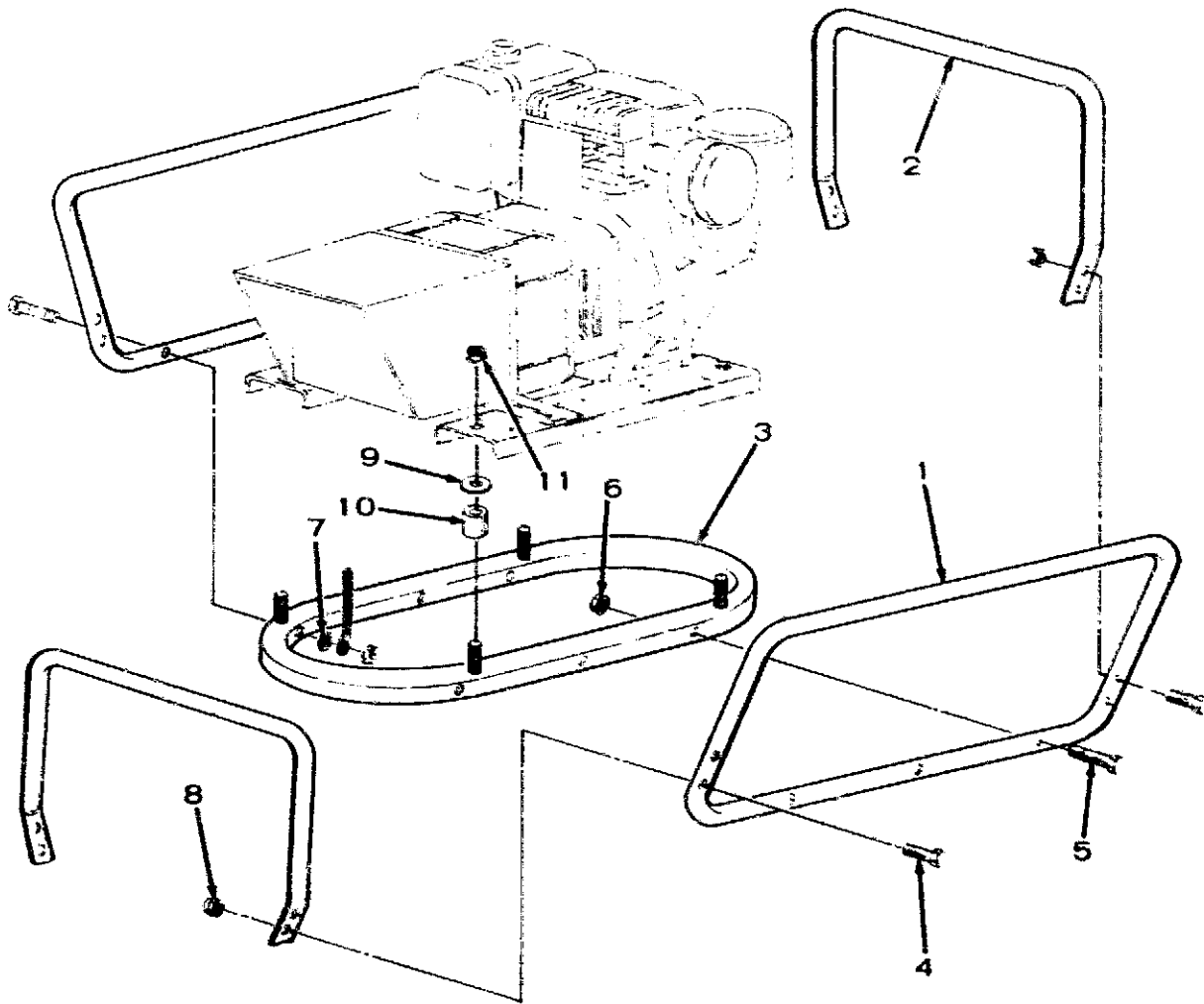
REF. NO.	PART NO.	QTY. USED	PART DESCRIPTION
	300-2278	1	Control Assembly - Complete
1	301-5141	1	Panel, Receptacle
2	323-1104	1	Receptacle, Duplex (15 Amp, 120 Volt)
3	323-1107	1	Receptacle, Twistlock (30 Amp, 120 Volt)
4	323-1110	1	Receptacle, Twistlock (30 Amp, 240 Volt)
5	822-2030	5	Screw, Machine - Pan Head w/ET (#6-32 x 3/8")
6	320-0540	2	Breaker, Circuit (15 Amp)
7	320-0543	3	Breaker, Circuit (30 Amp)
8	853-0005	1	Washer, Lock-ET (#8)
9	854-0023	5	Washer, Lock-IT (7/16")
10	308-0479	1	Switch, Toggle
11	517-0133	4	Plug, Hole (1/2")
12	332-2139	1	Terminal, Tab (4 Place)
13	818-0164	2	Rivet, Pop
14	LEAD, WIRE		
	336-4258	1	30 Amp Breaker to Switch (6")
	336-4259	3	Twistlock Receptacle to Circuit Breaker (4")
	336-2987	1	Duplex Receptacle to Tab Terminal (10")
	336-2847	2	Duplex Receptacle to 15 Amp Breaker (4")
	336-4270	1	15 Amp Breaker to 30 Amp Breaker (3")
	336-4257	2	Breaker to Switch (5")
	336-4794	1	15 Amp Breaker to Switch (5")
	336-4939	2	Switch to Tab Terminal (6")
	336-4263	1	120 Volt Twistlock Receptacle to Tab Terminal
	336-7710	1	Tab Terminal to End Bell (8")
15	332-1571	2	Adaptor, Terminal (1/4")

CONTROL ASSEMBLY - KEY 2



REF. NO.	PART NO.	QTY. USED	PART DESCRIPTION
	300-2344	1	Control Assembly - Complete
1	301-6300	1	Box, Receptacle
2	323-1104	2	Receptacle, Duplex (15 Amp, 120 Volt)
3	512-0132	3	Plug, Hole (.437")
4	517-0133	3	Plug, Hole (1/2")
5	822-2030	4	Screw, Cap - Pan Head W/ET (#6-32 x 3/8")
6	323-1109	1	Receptacle, Twistlock (30 Amp, 120/240 Volt)
7	332-1571	4	Adaptor, Terminal (1/4")
8	LEAD, WIRE		
	336-7700	2	Duplex Ground Jumper
	336-4262	3	Receptacle to Ground
	336-7874	1	Toggle Switch to Points
	336-8075	1	Toggle Switch to Start Solenoid
	336-4261	2	Receptacle to Receptacle Ground
9	308-0633	1	Switch, Toggle
10	98-4484	2	Label
11	98-4483	1	Label
12	98-4486	1	Label
13	98-4487	1	Label
14	815-0476	4	Screw, Tapping - Pan Head (#10-32 x 3/8")

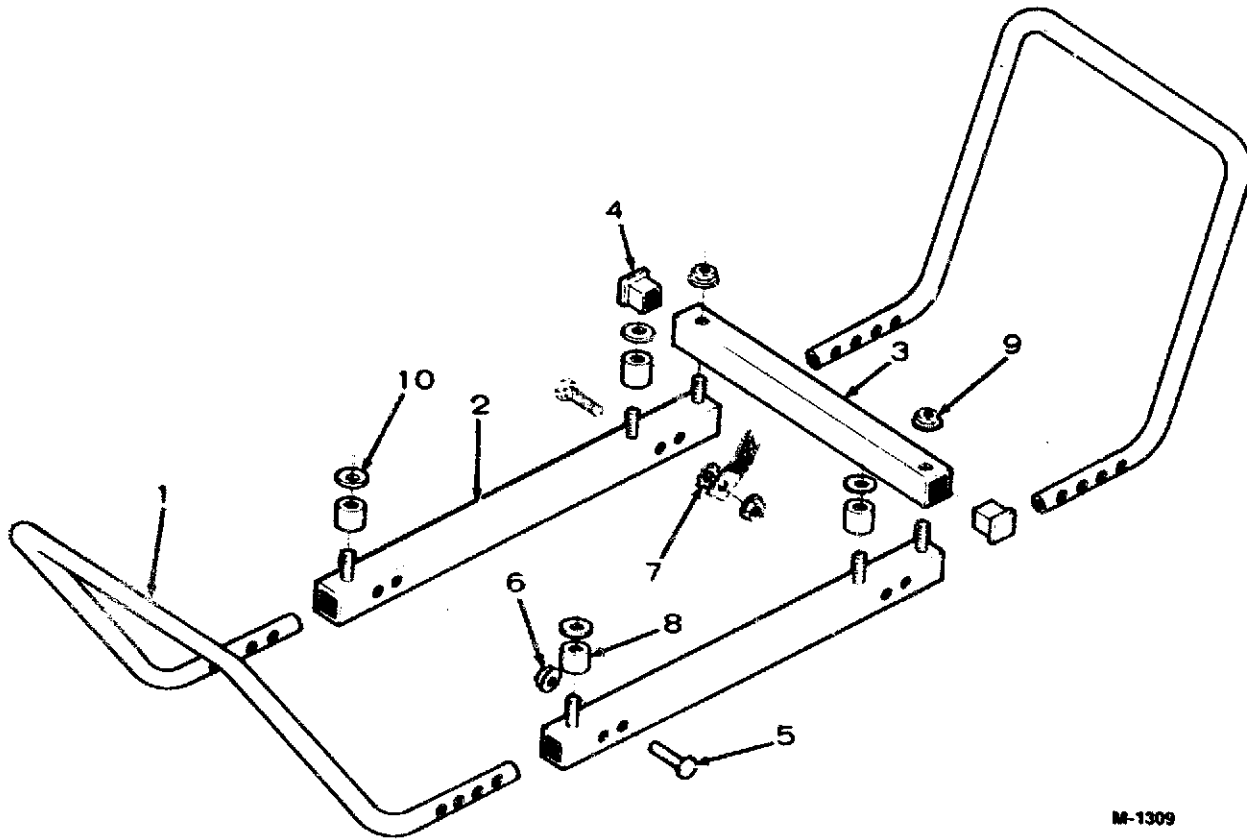
FRAME - KEY 1



M-1309

REF. NO.	PART NO.	QTY. USED	PART DESCRIPTION
1	403-1889	2	Frame, Side
2	403-1890	2	Crossbar, Frame
3	403-1873	1	Base, Frame
4	800-0030	8	Screw, Cap - Hex Head (5/16"-18 x 1-1/4")
5	800-0034	6	Screw, Cap - Hex Head (5/16"-18 x 2-1/4")
6	870-0257	6	Nut, Hex - Self Locking (5/16"-18)
7	856-0008	1	Washer, Lock - EIT (5/16")
8	866-0012	8	Nut, Acorn (5/16"-18)
9	526-0128	4	Washer, Flat (15/32" ID x 1-1/2" OD x 1/4")
10	402-0421	4	Dampener, Vibration
11	870-0297	4	Nut, Hex - Self Locking (3/8"-16)

FRAME - KEY 2



M-1309

REF. NO.	PART NO.	QTY. USED	PART DESCRIPTION
1	403-1887	2	End, Frame
2	403-1903	2	Support, Frame
3	403-1901	1	Support, Cross
4	517-0166	2	Plug, Support (Plastic)
5	800-0032	8	Screw, Cap - Hex Head (5/16"-18 x 1-3/4")
6	870-0257	8	Nut, HWH (5/16"-18)
7	856-0008	1	Washer, Lock - EIT (5/16")
8	402-0421	4	Dampener, Vibration
9	870-0297	6	Nut, HWH (3/8"-16)
10	526-0128	4	Washer, Flat (15/32" ID x 1-1/2" OD x 1/4")

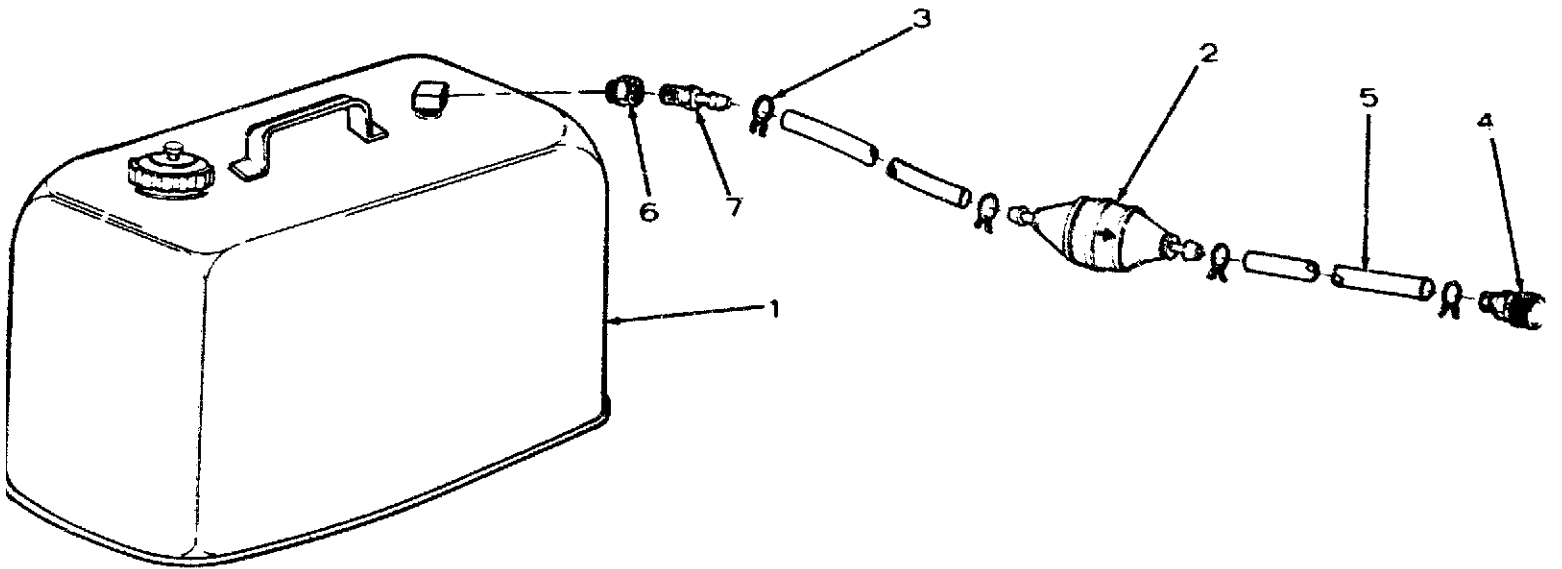
SERVICE KITS AND MISCELLANEOUS

PART NO.	QTY. USED	PART DESCRIPTION
168-0140	1	Gasket Kit, Carbon Removal
168-0153	1	Gasket Kit, Engine
522-0307	1	Overhaul Kit
160-1213	1	Tune-Up Kit
525-0454	1	Paint, Touch-Up-Grieger (13 oz. Pressurized Can)

OPTIONAL EQUIPMENT SECTION

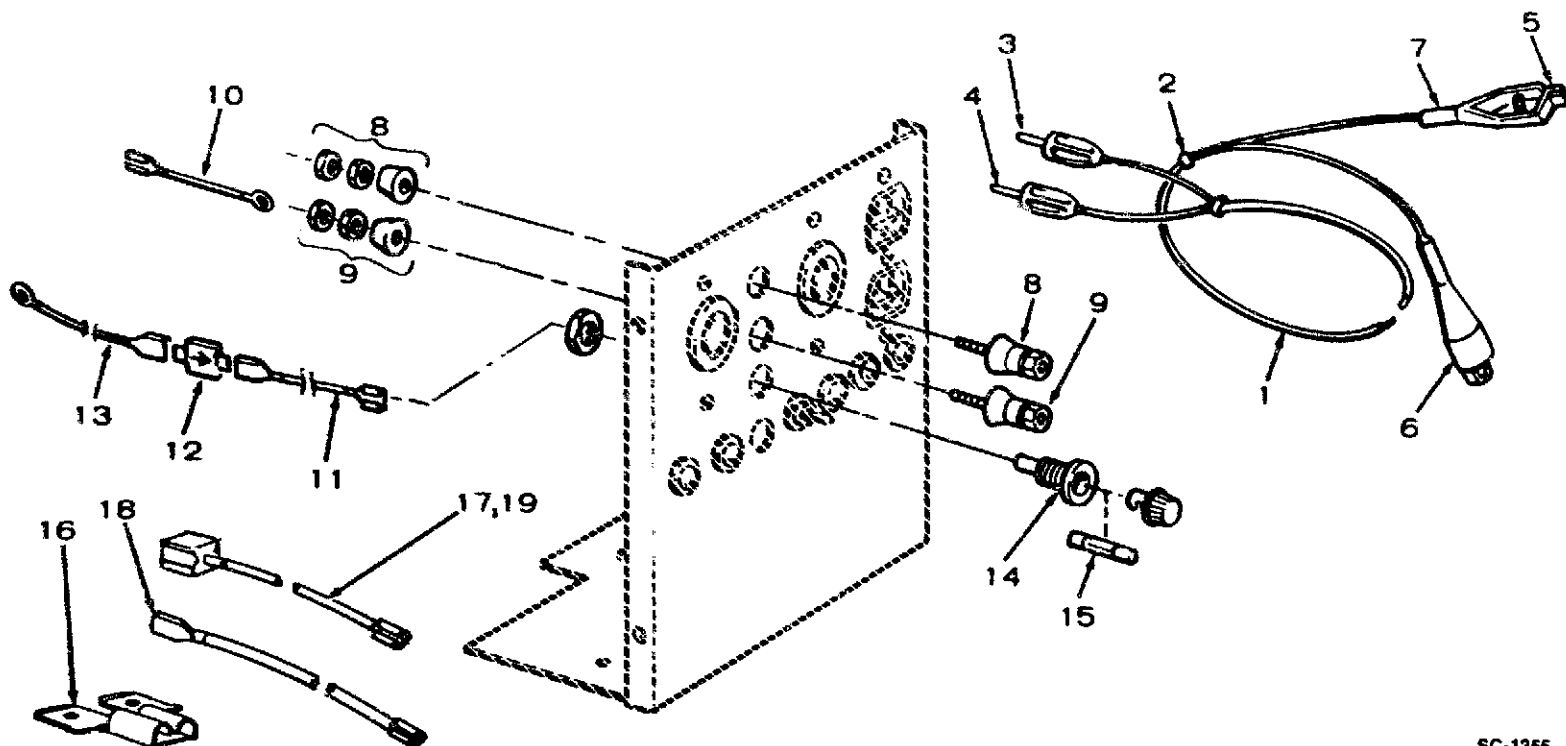
**This section contains parts listing of factory installed options.
NOTE: options may not be applicable to all models; for field
installations, additional parts are usually required.**

FUEL TANK - OPTIONAL



REF. NO.	PART NO.	QTY. USED	PART DESCRIPTION
	415-0510	1	Kit, Fuel Tank (6-1/4 Gal)
1	415-0511	1	Tank, Fuel (Includes Pickup and Cap)
2	149-1731	1	Bulb, Primer
3	503-0731	4	Clamp, Hose
4	502-0398	1	Coupling, Male
5	503-1019	2	Hose, Fuel
6	505-0007	1	Bushing, Reducer (1/4" x 1/8")
7	502-0395	1	Connector, Hose (1/8" NPT x 1/4" Hose)

BATTERY CHARGER - OPTIONAL



SC-1255

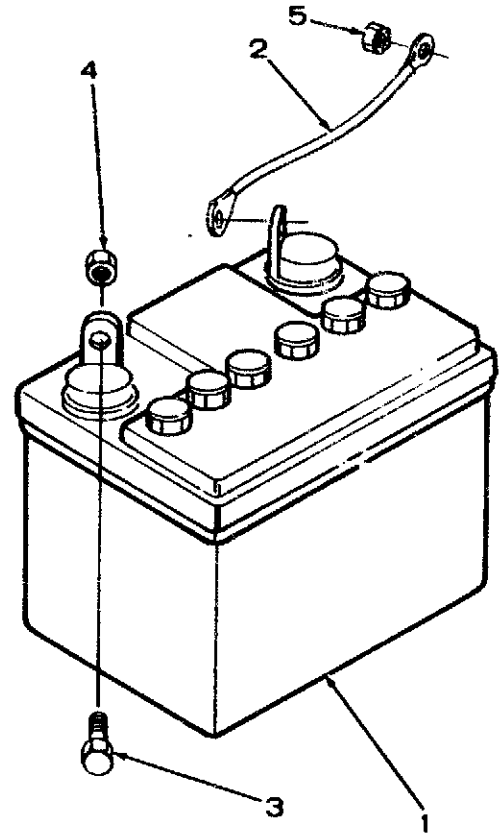
REF. NO.	PART NO.	QTY. USED	PART DESCRIPTION
	305-0593	1	Kit, Battery Charger Complete
1	305-0537	1	Cable Assembly (Includes Parts Marked*)
2	332-0942	2	*Tie, Cable
3	323-0888	1	*Plug, Banana (Red)
4	323-0889	1	*Plug, Banana (Black)
5	332-1446	2	*Clip, Battery
6	332-1447	1	*Insulator, Clip (Red)
7	332-1448	1	*Insulator, Clip (Black)
8	332-0785	1	Post, Binding (Red)
9	332-0784	1	Post, Binding (Black)
10	336-2170	1	Lead (6")
11	336-4787	1	Lead (2-1/2")
12	357-0030	1	Rectifier, Silicon
13	226-1876	1	Lead (27")
14	321-0175	1	Holder, Fuse
15	321-0233	1	Fuse, 8 Ampere
16	332-1571	1	Terminal, Piggy Back - Key 2
17	LEAD (Includes Parts Marked #)		
	336-5078	1	Stator to Fuse Holder - Key 1,2
	336-5477	1	Charge - Resistor to Fuse Holder - Key 2
18	336-5679	1	Lead, Extension (8") - Key 2
19	332-2023	2	#Housing, Terminal

* - Parts included in 305-0537 Cable Assembly.

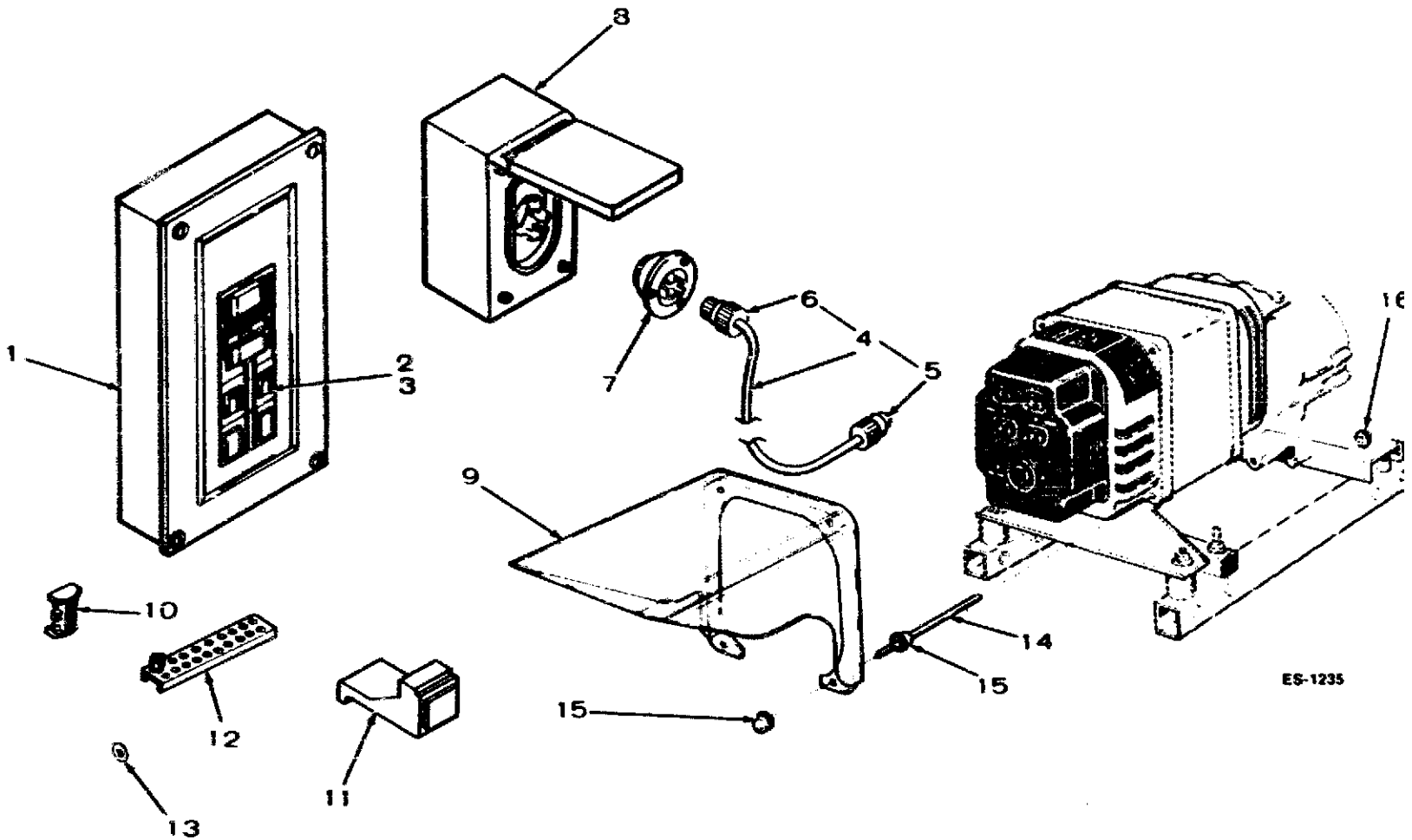
- Parts included in Lead Assemblies.

BATTERY - OPTIONAL

REF. NO.	PART NO.	QTY. USED	PART DESCRIPTION
	416-0786	1	Battery Kit
1	416-0695	1	Battery
2	336-7866	2	Lead, Battery (6")
3	810-0151	2	Screw, Machine - Round Head Brass (1/4"-20 x 3/4")
4	871-0018	2	Nut, Hex - Brass (1/4"-20)
5	870-0232	1	Nut, Hex w/ET (1/4"-20) - Negative Lead to Ground



HOME STANDBY (30 AMP) - OPTIONAL

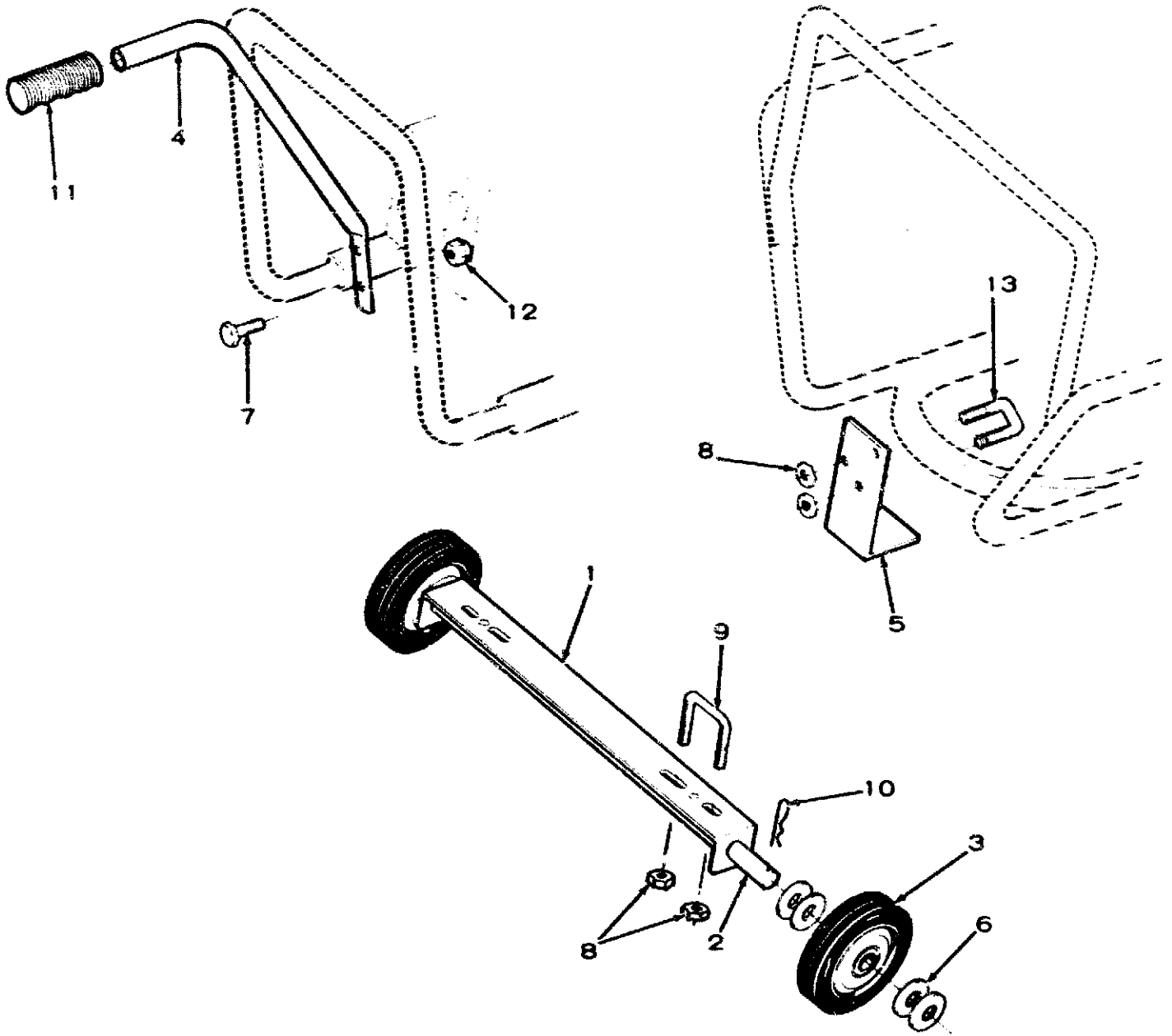


ES-1235

REF. NO.	PART NO.	QTY. USED	PART DESCRIPTION
	320-1073	1	Home Standby Switch and Cable Kit (30 Amp)
1	320-0789	1	Load Center, Pushmatic
2	320-0785	2	Breaker, Circuit (30 Amp, 240 Volt)
3	320-0788	2	Breaker, Circuit (15 Amp, 120 Volt)
4	335-0124	1	Cable Assembly (Includes Parts Marked*)
5	323-1144		*Plug, Twistlock
6	323-1146		*Connector, Twistlock
7	323-1148	1	Receptacle, Male (Weatherproof)
8	323-1153	1	Box, Control
9	301-6888	1	Shield, Control Box
10	320-0791	1	Interlock, Mechanical
11	320-0790	2	Plate, Filler
12	320-0792	1	Bar, Ground
13	526-0021	4	Washer, Flat (17/64" ID x 3/4" OD x 1/16")
14	520-0927	4	Stud (1-1/4"-20 x 10)
15	870-0383	8	Nut, Pal (1/4"-20)
16	870-0232	4	Nut, Hex w/ET (1/4"-20)

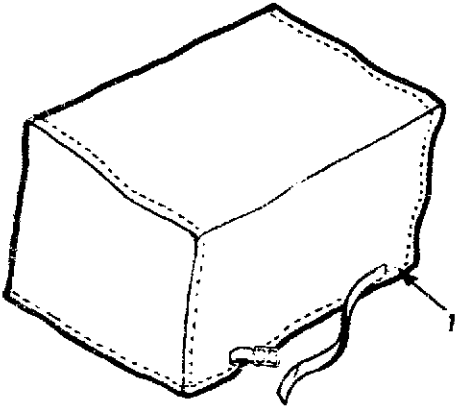
* - Parts Included in the 335-0124 Cable Assembly

DOLLY KIT - OPTIONAL



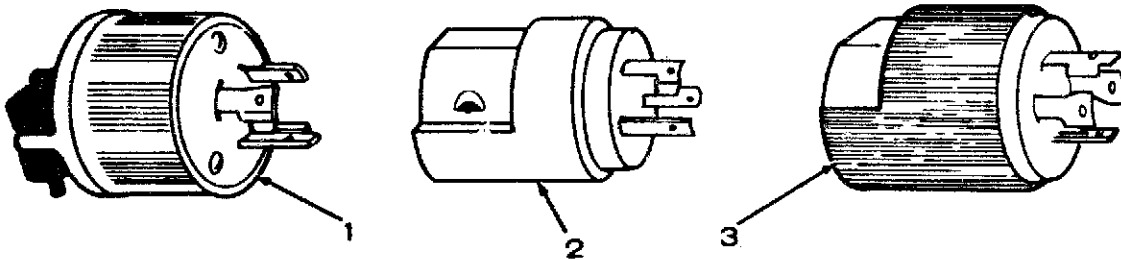
REF. NO.	PART NO.	QTY. USED	PART DESCRIPTION
	410-0756	1	Dolly Kit - Complete
1	410-0753	1	Bracket, Axle Support
2	410-0723	1	Axle
3	410-0618	2	Wheel
4	410-0758	2	Handle
5	410-0751	1	Foot, Dolly
6	526-0219	10	Washer, Flat
7	SCREW, CAP - HEX HEAD		
	800-0031	2	Top (5/16"-18 x 1-1/2")
	800-0030	2	Bottom (5/16"-18 x 1-1/4")
8	870-0257	6	Nut, Hex - Self Locking (5/16"-18)
9	U-BOLT, AXLE		
	410-0759	2	2-1/2" - Key 1
	410-0766	2	1-3/4" - Key 2
10	516-0199	2	Pin, Hitch
11	403-1477	2	Grip, Handle
12	866-0012	4	Nut, Acorn (5/16"-18)
13	U-BOLT, DOLLY FOOT		
	410-0759	2	2-1/2" - Key 2
	410-0766	2	1-3/4" - Key 1

PROTECTIVE COVER - OPTIONAL



REF. NO.	PART NO.	QTY. USED	PART DESCRIPTION
1	412-0032	1	Cover, Protective - Canvas

TWISTLOCK PLUGS - OPTIONAL



REF. NO.	PART NO.	QTY. USED	PART DESCRIPTION
1	323-0862	1	Plug, Twistlock (30 Amp, 120 Volt), (Nema L5-30P) - Key 1
2	323-1143	1	Plug, Twistlock (30 Amp, 240 Volt), (Nema L6-30P) - Key 1
3	323-0952	1	Plug, Twistlock (30 Amp, 120/240 Volt), (Nema L14-30P) - Key 2