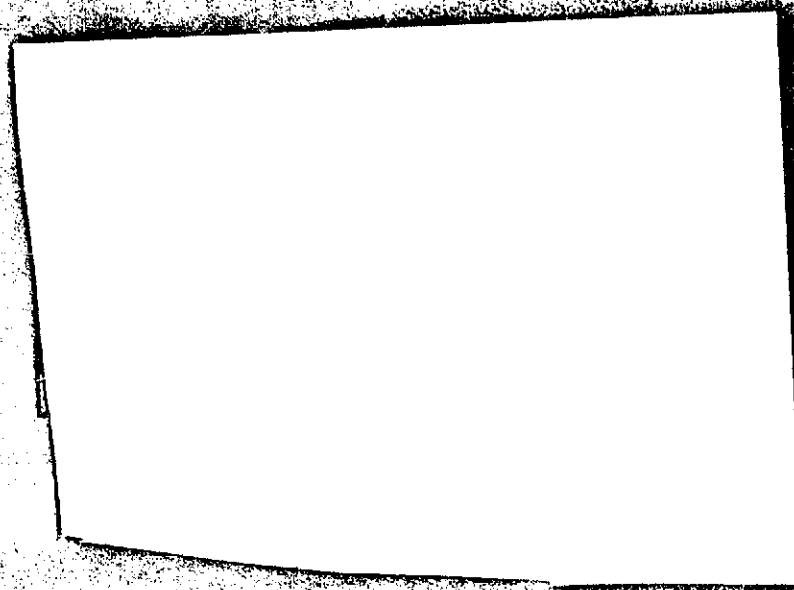


The following catalog  
has gaps in its page  
numbers, or doesn't  
have any numbers.  
We have chosen to  
leave the page  
numbering in the  
order that Acrobat  
assigns it.

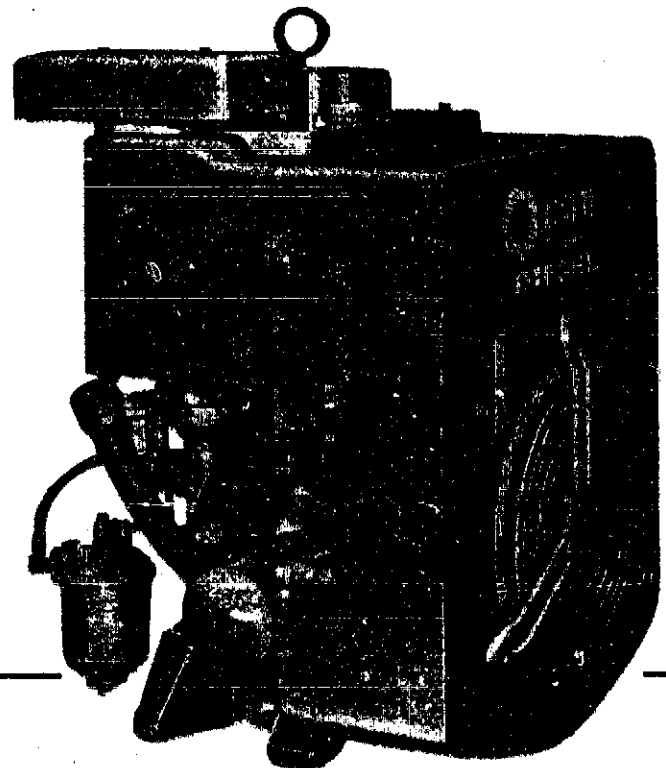
McGRAW-EDISON

**Onan**



# Parts Manual

DJA  
**Engine  
Diesel**



947-0255

**Power  
Generation**

Redistribution or publication of this document  
by any means, is strictly prohibited.

# GENERAL INFORMATION

## INSTRUCTIONS FOR ORDERING REPAIR PARTS

For parts or service, contact the dealer from whom you purchased this equipment or refer to your Nearest Authorized Onan Parts and Service Center.

To avoid errors or delay in filling your parts order, please furnish all information requested.

Always refer to the nameplate on your unit.

1. Always give the MODEL, SPEC NO. and SERIAL NO.

The diagram shows a rectangular nameplate with two circular mounting holes at the top. At the top center, the text "MCGRAW-EDISON" is printed in a bold, sans-serif font. Below this, the "Onan" logo is prominently displayed in a large, stylized font. Underneath the logo is a large rectangular box labeled "MODEL AND SPEC NO." in bold capital letters. Below that is another rectangular box labeled "SERIAL NO." in bold capital letters. The bottom right corner of the nameplate is folded over, revealing a smaller section with the text "22-1140".

For handy reference, insert "YOUR" nameplate information in the spaces above.

2. Do not order by reference number; always use part number and description.
3. Give the part number, description and quantity needed of each item. If an older part cannot be identified, return the part prepaid to your dealer or nearest Onan Parts and Service Center. Print your name and address plainly on the package. Write a letter to the same address stating the reason for returning the part.
4. State definite shipping instructions. Any claim for loss or damage to your unit in transit should be filed promptly against the transportation company making the delivery. Shipments are complete unless the packing list indicates items are back ordered.

Prices are purposely omitted from this Parts Manual due to the confusion resulting from fluctuating costs, import duties, sales taxes, exchange rates, etc.

For current parts prices, consult your Onan Dealer, Distributor or Parts and Service Center.

"En esta lista de partes los precios se omiten de proposito, ya que bastante confusion resulto de fluctuaciones de los precios, derechos aduanales, impuestos de venta, cambios extrajeros, etc."

Consiga los precios vigentes de su distribuidor de productos "ONAN."

**967-0413 (5-79)  
DJA ENGINE  
PARTS CATALOG**

# **INTRODUCTION**

This catalog applies to the standard DJA Engines (Formerly called DJ30). Parts are arranged in groups of related items. Each illustrated part is identified by a reference number corresponding to the same reference number below the illustration. Parts illustrations are typical. Unless otherwise mentioned in the description, parts are interchangeable between models. Right and left engine sides are determined by facing the blower end (front) of engine.

**MODEL NO. AND  
SPECIFICATION**

**DJA-MS/\* = Standard Units Without Clutch**

**DJA-MF/\* = Standard Units With Clutch**

- \* - The Specification Letter advances (A to B, B to C, etc.) with manufacturing changes.  
The Specification Number identifies optional equipment on special models.

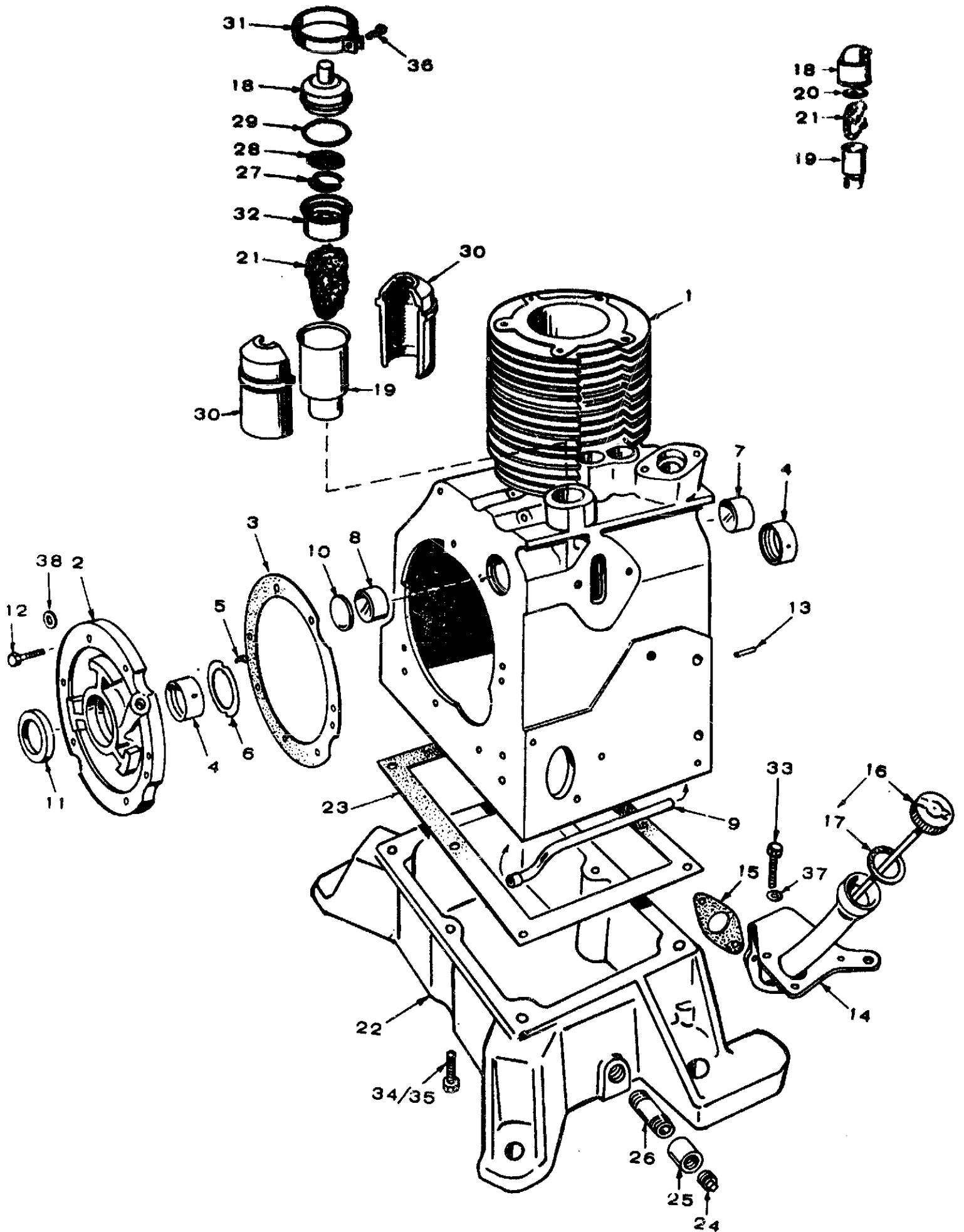
# **STANDARD PARTS SECTION**

**SERVICE KITS AND MISCELLANEOUS**

**NOTE:** For other kits, refer to the group for the part in question.

| REF.<br>NO. | PART<br>NO.          | QTY.<br>USED | PART<br>DESCRIPTION  |
|-------------|----------------------|--------------|--|
| 1           | 098-1100             | 1            | Decal Kit  |
| 2           | 168-0085             | 1            | Gasket Kit, Engine   |
| 3           | OVERHAUL KIT, ENGINE |              |  |
| 4           | 522-0200             | 1            | Spec A Through R   |
| 5           | 522-0249             | 1            | Begin Spec S   |
| 6           | 525-0137             | 1            | Paint, Touch-up Enamel (Green)<br>16 Ounce Pressurized Can |

# CYLINDER BLOCK AND OIL BASE

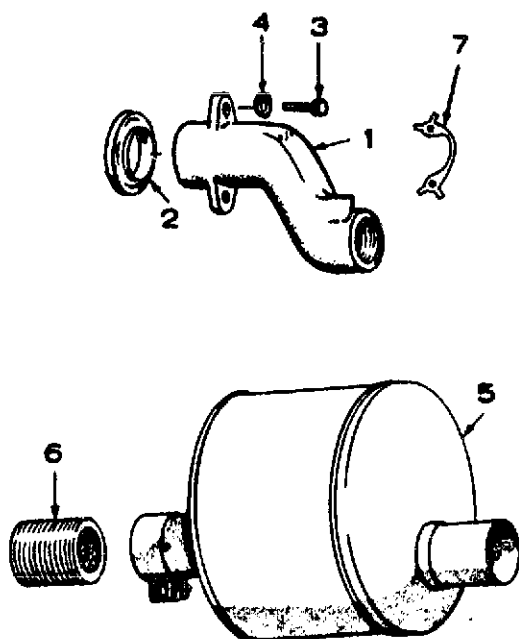


## CYLINDER BLOCK AND OIL BASE

| REF. NO. | PART NO.                                   | QTY. USED | PART DESCRIPTION                                   | REF. NO. | PART NO.       | QTY. USED | PART DESCRIPTION                               |
|----------|--|-----------|--|----------|----------------|-----------|--|
| 1        | 110-1335                                   | 1         | Block Assembly, Cylinder (Includes Parts Marked *) | 19       | TUBE, BREATHER |           |  |
| 2        | 101-0337                                   | 1         | *Plate, Bearing (Less Bearing and Pins)            |          | 123-0645       | 1         | Specs A Through Q                              |
| 3        | 101-0388                                   | 1         | *Gasket Kit, Bearing Plate (Includes Shims)        |          | 123-0952       | 1         | Begin Spec R                                   |
| 4        | *BEARING, MAIN (PRECISION) - FRONT TO REAR |           |  | 20       | 123-0315       | 1         | Valve, Breather (Specs A Through Q)            |
|          | 101-0359                                   | 2         | Standard   | 21       | 123-1283       | 1         | Baffle, Breather                               |
|          | 101-0359-02                                | 2         | .002" Undersize                                    | 22       | 102-0487       | 1         | Base, Oil                                      |
|          | 101-0359-10                                | 2         | .010" Undersize                                    | 23       | 102-0459       | 1         | Gasket, Oil Base Mounting                      |
|          | 101-0359-20                                | 2         | .020" Undersize                                    | 24       | 505-0056       | 1         | Plug, Pipe (1/2")                              |
|          | 101-0359-30                                | 2         | .030" Undersize                                    | 25       | 505-0014       | 1         | Coupling, Pipe (1/2")                          |
| 5        | 516-0072                                   | 4         | *Pin, Thrust Washer                                | 26       | 505-0002       | 1         | Nipple, Pipe (1/2" x 3")                       |
| 6        | 104-0420                                   | 2         | *Washer, Crankshaft Thrust                         | 27       | 123-1201       | 1         | Retainer, Breather Screen                      |
| 7        | 101-0363                                   | 1         | *Bearing, Camshaft Front                           | 28       | 123-1202       | 1         | Screen, Breather - Begin Spec R                |
| 8        | 101-0365                                   | 1         | *Bearing, Camshaft Rear                            | 29       | 509-0117       | 1         | Seal "O" Ring - Begin Spec R                   |
| 9        | 120-0572                                   | 1         | *Tube, Oil   | 30       | 123-0998       | 2         | Insulator Halves - Breather                    |
| 10       | 517-0053                                   | 1         | *Plug, Camshaft Opening                            |          |                |           | Begin Spec R                                   |
| 11       | 509-0086                                   | 1         | *Seal, Crankshaft                                  | 31       | 518-0268       | 1         | Clamp, Insulator - Begin Spec R                |
| 12       | 805-0019                                   | 6         | *Bolt, Place - Bearing Plate (3/8-16 x 1-1/4")     | 32       | 123-1153       | 1         | Cup & Holder Baffle                            |
| 13       | 516-0141                                   | 2         | *Pin, Dowel - Gearcase Alignment                   |          |                |           | Begin Spec R                                   |
| 14       | TUBE, OIL FILL                             |           |  | 33       | 800-0026       | 3         | Screw, Cap - Hex Head (5/16-18 x 3/4")         |
|          | 123-0724                                   | 1         | Specs A Through R                                  | 34       | 800-0050       | 2         | Screw, Cap - Hex Head (3/8-16 x 1")            |
|          | 123-1084                                   | 1         | Begin Spec S                                       | 35       | 800-0060       | 4         | Screw, Cap - Hex Head (3/8-16 x 3-1/2")        |
| 15       | 123-0667                                   | 1         | Gasket, Oil Fill Tube                              | 36       | 809-0035       | 1         | Screw, Sheet Metal - Round Head (#8 x 3/4")    |
| 16       | 123-0716                                   | 1         | Cap and Indicator, Oil Fill                        | 37       | 850-1045       | 3         | Washer, Lock - Spring (5/16")                  |
| 17       | 123-0191                                   | 1         | Gasket, Oil Fill Cap                               | 38       | 850-0045       | 2         | Washer, Lock Spring (5/16")                    |
| 18       | CAP, BREATHER                              |           |  | 39       | 526-0245       | 6         | Washer, Flat (.391" ID x .625" OD x .598 Thk.) |
|          | 123-0458                                   | 1         | Spec A Only  |          |                |           |  |
|          | 123-0767                                   | 1         | Specs B Through Q                                  |          |                |           |  |
|          | 123-1203                                   | 1         | Begin Spec R                                       |          |                |           |  |

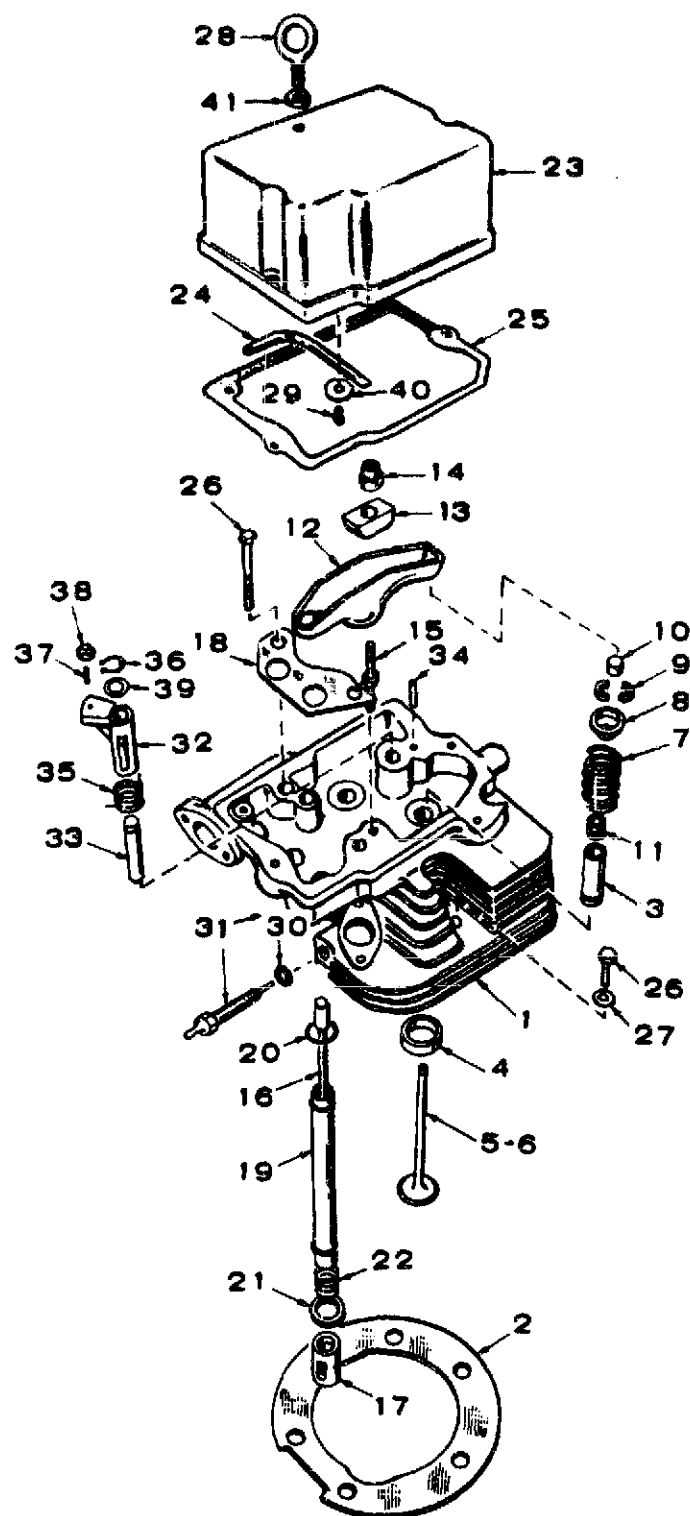
\* - Parts Included in 110-1335 Cylinder Block Assembly.

## EXHAUST SYSTEM



| REF. NO. | PART NO. | QTY. USED | PART DESCRIPTION                                |
|----------|----------|-----------|---|
| 1        | 154-0704 | 1         | Manifold, Exhaust                               |
| 2        | 154-0463 | 1         | Gasket, Manifold                                |
| 3        | 110-0284 | 2         | Screw, Cap - Hex Head (5/16-18 x 1-1/2")        |
|          |          |           | Special   |
| 4        | 526-0045 | 2         | Washer, Flat (.21/64" ID x 5/8" OD x 1/8" Thk.) |
| 5        | 155-0824 | 1         | Muffler, Exhaust - Optional                     |
| 6        | 505-0177 | 1         | Nipple, Exhaust - Optional                      |
| 7        | 154-1665 | 1         | Lock Tab  |

## CYLINDER HEAD, VALVE AND ROCKER



| REF. NO. | PART NO.                           | QTY. USED | PART DESCRIPTION  |
|----------|------------------------------------|-----------|---|
| 1        | HEAD ASSEMBLY, CYLINDER - COMPLETE |           |   |
|          | 110-1695                           | 1         | *Without Valves (Includes Parts Marked *)                                   |
|          | 110-2963                           | 1         | With Valves (Includes Parts Marked +)                                       |
| 2        | 110-1267                           | 1         | Gasket, Cylinder Head   |
| 3        | GUIDE, VALVE                       |           |   |
|          | 110-1501                           | 2         | *Standard   |
|          | 110-1501-01                        | 2         | .002" Oversize  |
|          | 110-1501-05                        | 2         | .005" Oversize  |
| 4        | INSERT, VALVE SEAT                 |           |   |
|          | 110-1268                           | 2         | *Standard   |
|          | 110-1268-02                        | 2         | .002" Oversize  |
|          | 110-1268-05                        | 2         | .005" Oversize  |
|          | 110-1268-10                        | 2         | .010" Oversize  |
|          | 110-1268-20                        | 2         | .020" Oversize  |
| 5        | 110-1320                           | 1         | *Valve, Intake  |
| 6        | 110-1278                           | 1         | *Valve Exhaust  |
| 7        | 110-1221                           | 2         | *Spring, Valve  |
| 8        | 110-1220                           | 2         | *Retainer, Valve Spring   |
| 9        | 110-0858                           | 4         | *Lock, Valve Spring Retainer  |
| 10       | 110-0859                           | 2         | *Cap, Valve Stem  |
| 11       | 509-0132                           | 1         | Seal, Oil - Intake Valve  |
| 12       | ARM, ROCKER                        |           |   |
|          | 115-0128                           | 1         | Exhaust   |
|          | 115-0129                           | 1         | Intake  |
| 13       | 115-0127                           | 2         | Ball, Rocker Arm  |
| 14       | 115-0150                           | 2         | Lock Nut, Rocker Arm  |
| 15       | 115-0152                           | 2         | Stud, Rocker Arm  |
| 16       | 115-0149                           | 2         | Rod, Valve Push   |
| 17       | TAPPET, VALVE                      |           |   |
|          | 1150132                            | 2         | Specs A Through Q   |
|          | 115-0195                           | 2         | Begin Spec R  |
| 18       | 115-0147                           | 1         | Guide, Push Rod   |
| 19       | 115-0151                           | 2         | Shield, Push Rod  |
| 20       | 509-0084                           | 4         | Seal, Push Rod  |
| 21       | 115-0155                           | 4         | Washer, Spring Retaining  |
| 22       | 115-0146                           | 2         | Spring, Shield Retainer   |
| 23       | 115-0188                           | 1         | Cover, Rocker (Includes Parts Marked §)                                     |
| 24       | 120-0595                           | 1         | §Line, Oil Rocker Cover   |
| 25       | 115-0160                           | 1         | Gasket, Rocker Cover  |
| 26       | SCREW, CYLINDER HEAD               |           |   |
|          | 110-1264                           | 2         | 3/8-16 x 4-1/4"   |
|          | 110-0814                           | 4         | 3/8-16 x 1-1/2"   |
| 27       | 526-0174                           | 4         | Washer, Flat (13/32" ID x 25/32" OD x .1345" Thk.)                          |
| 28       | 403-0671                           | 1         | Bolt, Eye - Lifting   |
| 29       | 809-0042                           | 1         | Screw, Tapping Round Head (#10 x 5/16")                                     |
| 30       | 110-0546                           | 1         | Gasket, Glow Plug   |
| 31       | 333-0106                           | 1         | Plug Kit, Glow (Includes Gasket)  |
| 32       | 110-1512                           | 1         | Arm, Decompression Release  |
| 33       | 110-1444                           | 1         | *§Pin, Decompression Release  |
| 34       | 516-0090                           | 1         | *§Pin, Roll (3/8" x 1-3/8")   |
| 35       | 110-1356                           | 1         | Spring, Decompression Release   |
| 36       | 518-0207                           | 1         | Ring, Retainer - Decompression Release                                      |
| 37       | 815-0252                           | 1         | Set Screw - Decompression Release   |
| 38       | 870-0134                           | 1         | Pinnut, Decompression Release   |
| 39       | 110-1511                           | 1         | Washer, Decompression Release (Not used on Early Models with Cast Iron Arm) |
| 40       | 526-0130                           | 1         | §Washer, Flat (17/64" ID x 1" OD x 1/16" Thk.)                              |
| 41       | 862-0003                           | 1         | Nut, Hex 3/8"   |

\* - Parts Included in 110-1695 Cylinder Head Assembly.

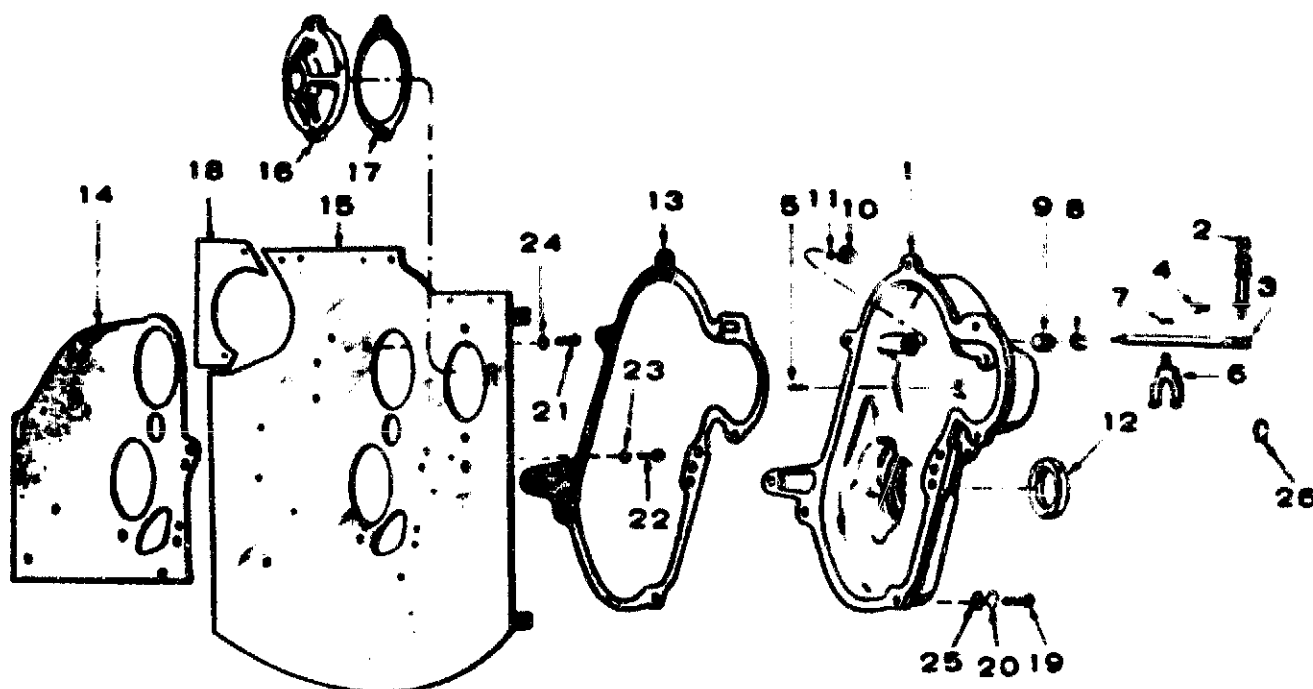
+ - Parts Included in 110-2963 Cylinder Head Assembly.

§ - Parts Included in 115-0188 Rocker Cover Assembly.

# - Parts Included in 110-1335 Cylinder Block Assembly.



# GEARCASE



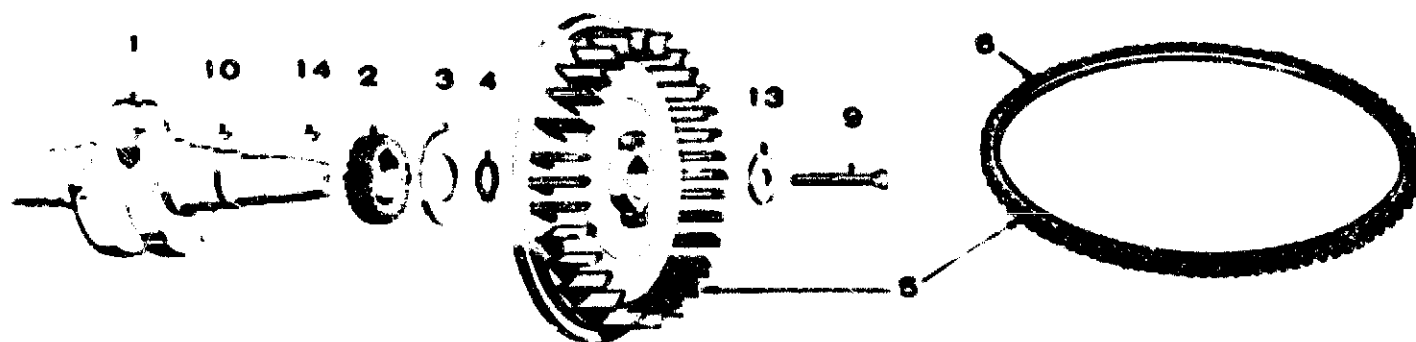
| REF. NO. | PART NO.  | QTY. USED | PART DESCRIPTION                             |
|----------|---|-----------|--|
| 1        | GEARCASE ASSEMBLY - COMPLETE<br>(INCLUDES PARTS MARKED *) |           |  |
|          | 103-0277  | 1         | Specs A Through S                            |
|          | 103-0366  | 1         | Begin Spec T                                 |
| 2        | ARM, GOVERNOR   |           |  |
|          | 150-0856  | 1         | Specs A Through Q                            |
|          | 150-1089  | 1         | Begin Spec R                                 |
| 3        | 150-0838  | 1         | *Shaft, Governor                             |
| 4        | 815-0176  | 1         | *Screw, Machine - Hex Head<br>(#8-32 x 1/2") |
| 5        | 516-0111  | 1         | *Pin, Roll                                   |
| 6        | 150-0777  | 1         | *Yoke, Governor                              |
| 7        | 518-0129  | 1         | *Ring, Yoke                                  |
| 8        | 509-0088  | 1         | *Seal, Oil                                   |
| 9        | 510-0048  | 1         | *Bearing, Governor Shaft 1/2"                |
| 10       | 510-0062  | 1         | *Bearing, Governor Shaft 1/4"                |
| 11       | 510-0043  | 1         | *Ball Bearing, Governor Shaft<br>Thrust      |
| 12       | 509-0087  | 1         | *Seal, Oil                                   |
| 13       | 103-0251  |           | Gasket, Gearcase                             |
| 14       | 103-0218  | 1         | Gasket, Backplate                            |

| REF. NO. | PART NO.              | QTY. USED | PART DESCRIPTION                                     |
|----------|-----------------------|-----------|--|
| 15       | 103-0271              |           | Backplate (NOTE: To Replace<br>also order 134-1532)  |
| 16       | 103-0221              |           | Cover, Gearcase Backplate<br>Opening                 |
| 17       | 160-0721              |           | Gasket, Backplate Opening<br>Cover                   |
| 18       | 134-1532              | 1         | Baffle, Backplate (NOTE: Not used<br>Early Model)    |
| 19       | SCREW, CAP - HEX HEAD |           |  |
|          | 800-0028              | 1         | 5/16-18 x 1"   |
|          | 110-0879              | 4         | 5/16-18 x 1-1/4"                                     |
| 20       | 850-0045              | 5         | Washer, Lock - Spring (5/16")                        |
| 21       | 815-1347              | 2         | Screw, Special (1/4-20 x 1/2")                       |
| 22       | 800-0028              | 1         | Screw, Cap - Hex Head<br>(5/16-18 x 3/4")            |
| 23       | 850-0045              | 1         | Washer, Lock - Spring (5/16")                        |
| 24       | 526-0115              | 2         | Washer, Flat (11/32" ID x<br>11/16" OD x 1/16" Thk.) |
| 25       | 526-0115              | 5         | Washer, Flat (11/32" ID x<br>11/16" OD x 1/16" Thk.) |
| 26       | 850-0025              | 1         | Washer, Lock - Spring #8                             |

\* - Parts Included in Gearcase Assembly.



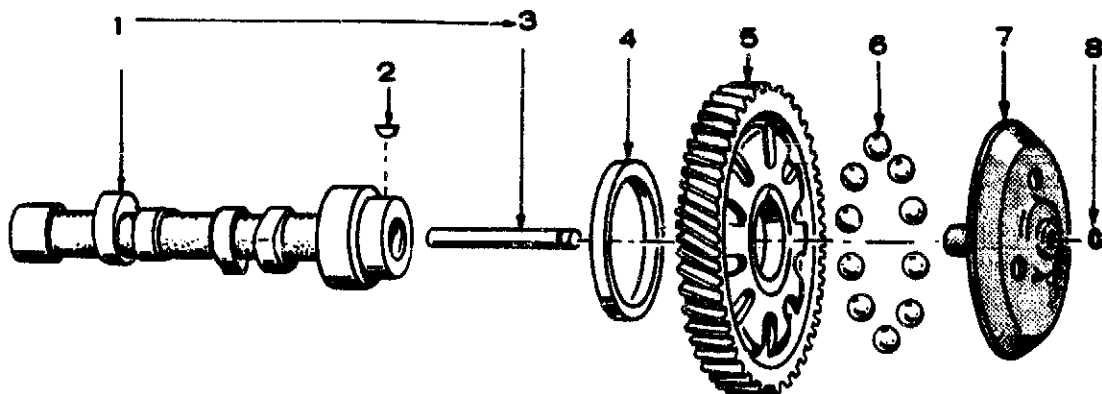
## CRANKSHAFT AND FLYWHEEL



| REF. NO. | PART NO. | QTY. USED | PART DESCRIPTION              |
|----------|----------|-----------|-------------------------------|
| 1        | 104-0461 | 1         | Crankshaft                    |
| 2        | 104-0418 | 1         | Gear, Crankshaft              |
| 3        | 104-0416 | 1         | Washer, Retainer              |
| 4        | 518-0188 | 1         | Ring, Lock                    |
| 5        | 104-0422 | 1         | Flywheel (Includes Ring Gear) |
| 6        | 104-0423 | 1         | Ring Gear, Flywheel           |

| REF. NO. | PART NO. | QTY. USED | PART DESCRIPTION                                 |
|----------|----------|-----------|--|
| 9        | 800-0500 | 1         | Screw, Cap - Hex Head (7/16-14 x 5-1/2")         |
| 10       | 515-0001 | 1         | Key, Gear  |
| 13       | 526-0185 | 1         | Washer, Flat (15/32" ID x 1-1/2" OD x 3/8" Thk.) |
| 14       | 515-0153 | 1         | Key, Flywheel to Crankshaft                      |

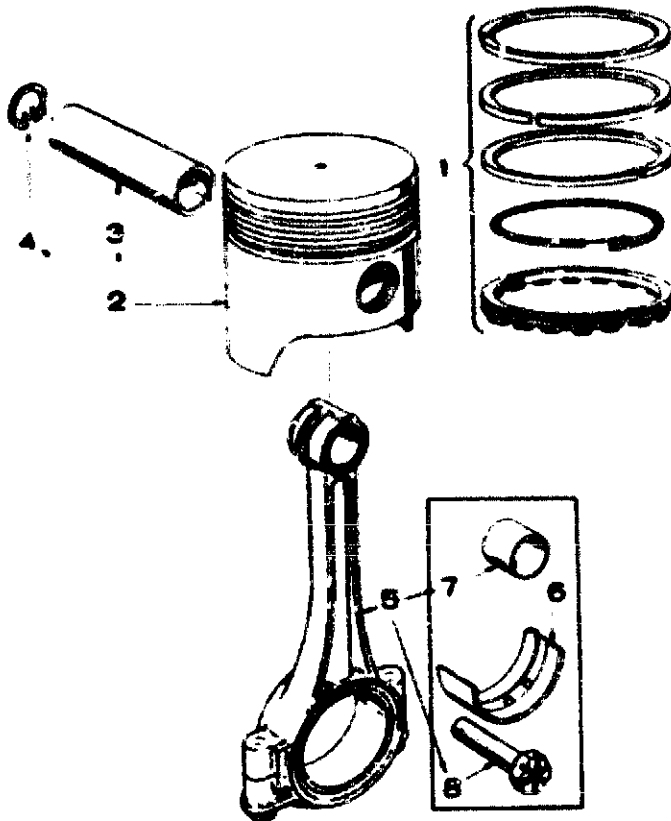
## CAMSHAFT



| REF. NO. | PART NO.                       | QTY. USED | PART DESCRIPTION   |
|----------|--------------------------------|-----------|--------------------|
| 1        | CAMSHAFT (INCLUDES CENTER PIN) |           |                    |
|          | 105-0248                       | 1         | Specs A Through Q  |
|          | 105-0299                       | 1         | Begin Spec R       |
| 2        | 515-0001                       | 1         | Key, Camshaft Gear |
| 3        | 150-0075                       | 1         | Pin, Center        |
| 4        | 105-0205                       | 1         | Washer, Thrust     |

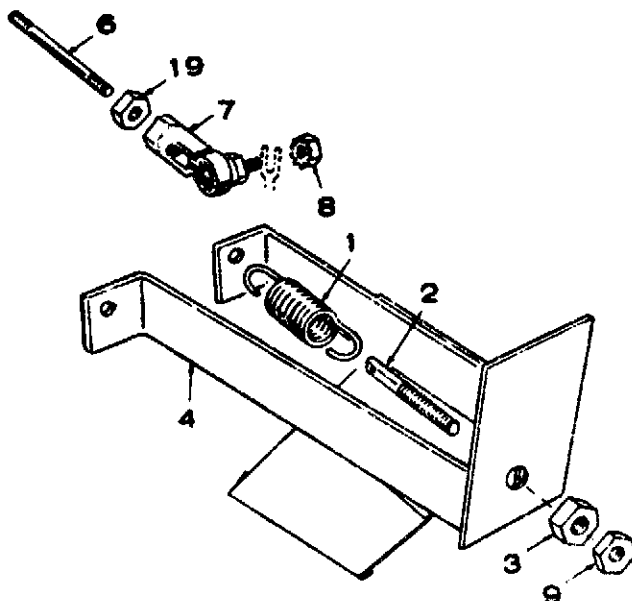
| REF. NO. | PART NO. | QTY. USED | PART DESCRIPTION                                  |
|----------|----------|-----------|---|
| 5        | 105-0218 | 1         | Gear, Camshaft (Includes Flyball Space and Plate) |
| 6        | 510-0046 | 10        | Ball, Fly - Governor                              |
| 7        | 150-0775 | 1         | Cup, Governor                                     |
| 8        | 150-0078 | 1         | Ring, Snap  |

## PISTON AND ROD



| REF. NO. | PART NO.                                | QTY. USED | PART DESCRIPTION                 |
|----------|---|-----------|----------------------------------|
| 1        | RING SET, PISTON                        |           |                                  |
|          | 113-0130                                | 1         | Standard                         |
|          | 113-0130-05                             | 1         | .005" Oversize                   |
|          | 113-0130-10                             | 1         | .010" Oversize                   |
|          | 113-0130-20                             | 1         | .020" Oversize                   |
|          | 113-0130-30                             | 1         | .030" Oversize                   |
|          | 113-0130-40                             | 1         | .040" Oversize                   |
| 2        | PISTON & PIN (INCLUDES RETAINING RINGS) |           |                                  |
|          | Specs A Through Q                       |           |                                  |
|          | 112-0103                                | 1         | Standard                         |
|          | 112-0103-05                             | 1         | .005" Oversize                   |
|          | 112-0103-10                             | 1         | .010" Oversize                   |
|          | 112-0103-20                             | 1         | .020" Oversize                   |
|          | 112-0103-30                             | 1         | .030" Oversize                   |
|          | 112-0103-40                             | 1         | .040" Oversize                   |
|          | Begin Spec R                            |           |                                  |
|          | 112-0109                                | 1         | Standard                         |
|          | 112-0109-05                             | 1         | .005" Oversize                   |
|          | 112-0109-10                             | 1         | .010" Oversize                   |
|          | 112-0109-20                             | 1         | .020" Oversize                   |
|          | 112-0109-30                             | 1         | .030" Oversize                   |
|          | 112-0109-40                             | 1         | .040" Oversize                   |
|          | Begin Spec R                            |           |                                  |
| 3        | 112-0083                                | 1         | Pin, Piston                      |
| 4        | 112-0085                                | 2         | Ring, Retaining                  |
| 5        | 114-0168                                | 1         | Rod Assembly, Connecting         |
| 6        | BEARING HALF, CONNECTING ROD            |           |                                  |
|          | 114-0164                                | 2         | Standard                         |
|          | 114-0164-02                             | 2         | .002" Undersize                  |
|          | 114-0164-10                             | 2         | .010" Undersize                  |
|          | 114-0164-20                             | 2         | .020" Undersize                  |
|          | 114-0164-30                             | 2         | .030" Undersize                  |
| 7        | 114-0170                                | 2         | Bushing, Piston Pin              |
| 8        | 805-0012                                | 2         | Bolt, Place (5/16-24 x 1-13/16") |

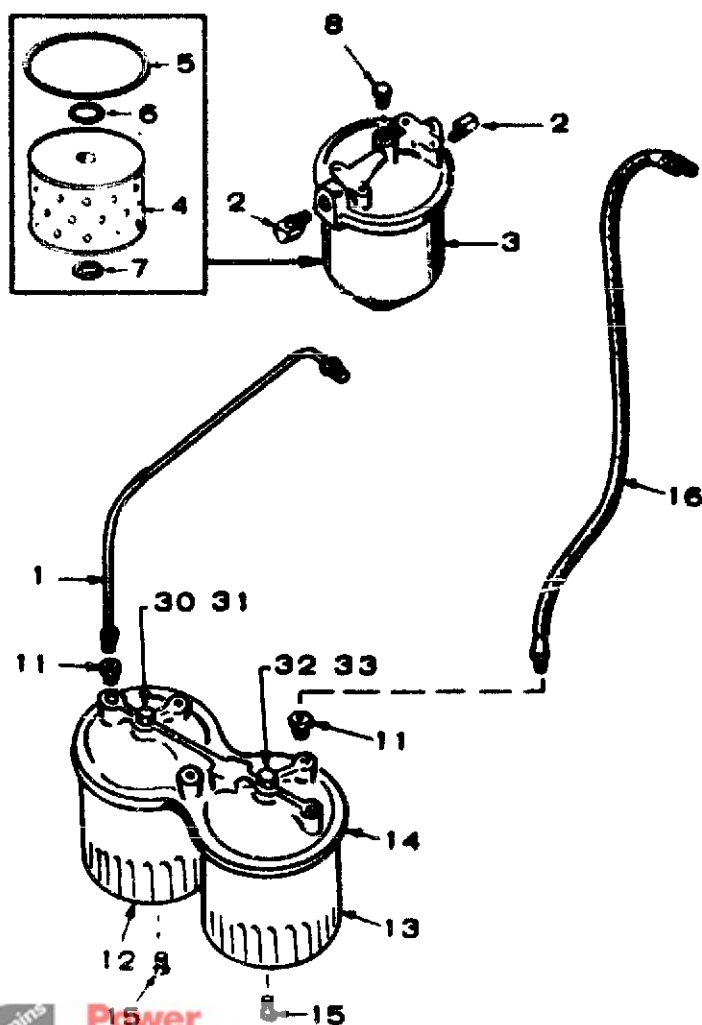
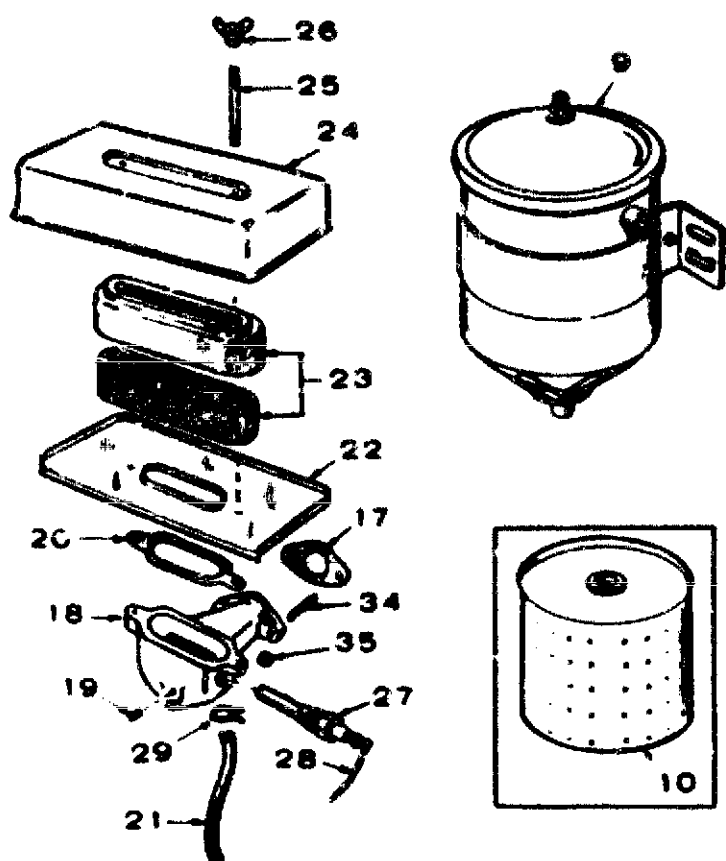
## GOVERNOR



| REF. NO. | PART NO.                 | QTY. USED | PART DESCRIPTION   |
|----------|--------------------------|-----------|--------------------|
| 1        | SPRING, GOVERNOR         |           |                    |
|          | 150-0821                 | 1         | Specs A Through Q  |
|          | 150-1084                 | 1         | Begin Spec R       |
| 2        | STUD, GOVERNOR ADJUSTING |           |                    |
|          | 150-0822                 | 1         | Specs A Through Q  |
|          | 150-1082                 | 1         | Begin Spec R       |
| 3        | NUT, STUD ADJUSTING      |           |                    |
|          | 104-0091                 | 1         | Specs A Through Q  |
|          | 862-0003                 | 1         | Begin Spec R       |
| 4        | BRACKET, GOVERNOR        |           |                    |
|          | 150-0812                 | 1         | Specs A Through Q  |
|          | 150-1107                 | 1         | Begin Spec R       |
| 5        | LINK                     |           |                    |
|          | 150-0883                 | 1         | Specs A Through Q  |
|          | 150-1201                 | 1         | Begin Spec R       |
| 6        | JOINT BALL               |           |                    |
|          | 150-0974                 | 2         | Specs A Through Q  |
|          | 150-0939                 | 2         | Begin Spec R       |
| 7        | 870-0131                 | 2         | Nut, Joint Arm     |
| 8        | NUT, LOCK                |           |                    |
|          | 870-0130                 | 1         | Specs A Through Q  |
|          | 870-0133                 | 1         | Begin Spec R       |
| 9        | 870-0053                 | 1         | Nut, Governor Link |

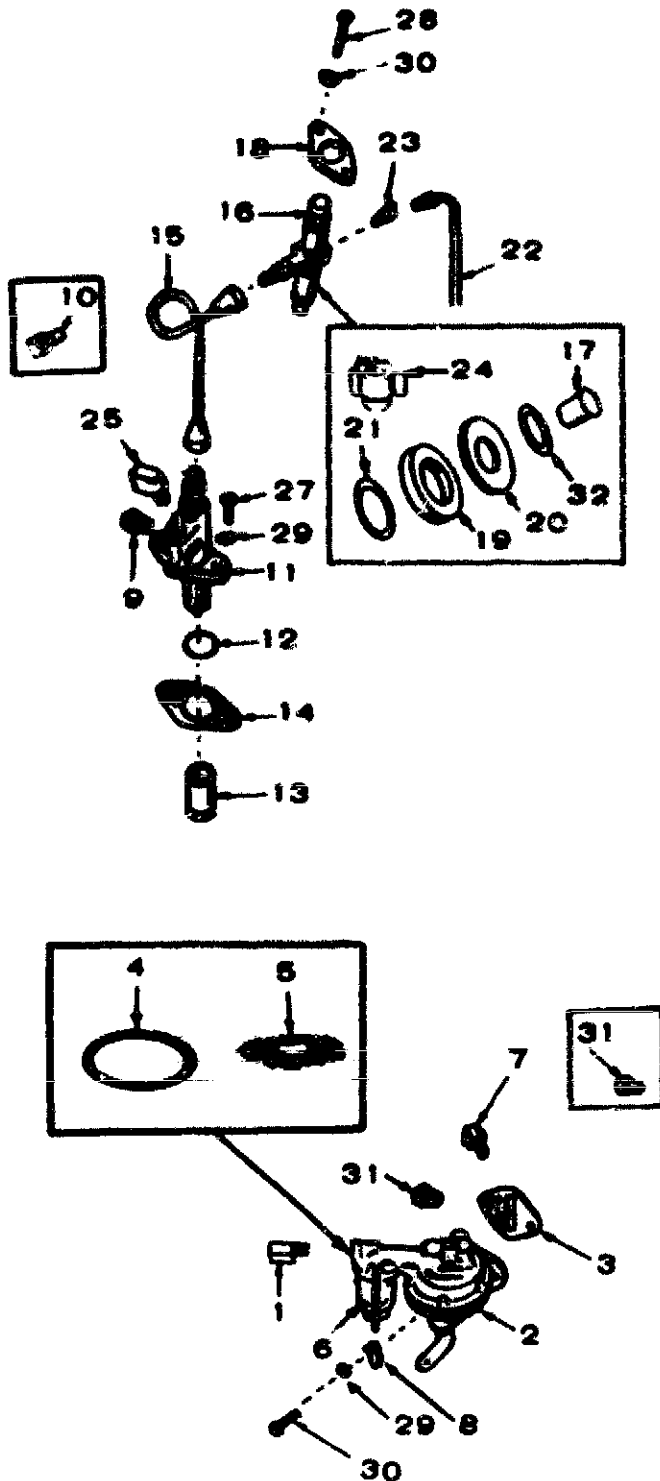
Redistribution or publication of this document by any means, is strictly prohibited.

# AIR CLEANER AND FUEL FILTER



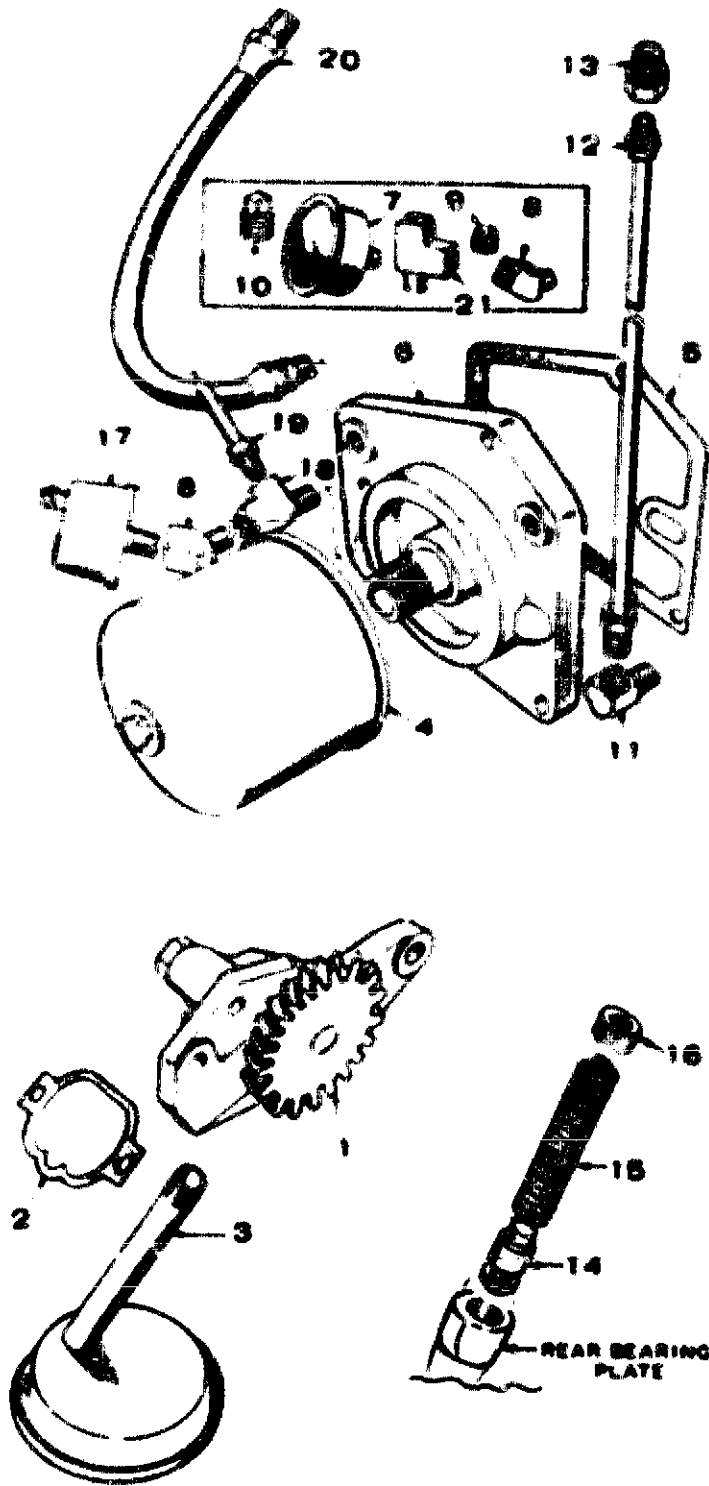
| REF. NO. | PART NO.                              | QTY. USED | PART DESCRIPTION  |
|----------|---------------------------------------|-----------|---|
| 1        | LINE, TRANSFER PUMP TO PRIMARY FILTER |           |   |
|          | 501-0032                              | 1         | Specs A Through R   |
|          | 149-1191                              | 1         | Begin Spec S  |
| 2        | ELBOW, SECONDARY FILTER TO LINE       |           |   |
|          | SPECS A THROUGH R                     |           |   |
|          | 502-0041                              | 1         | Inlet   |
|          | 502-0054                              | 1         | Outlet  |
| 3        | 149-0408                              | 1         | Filter, Secondary (Includes Cartridge) - Specs A Through R                    |
| 4        | 149-0428                              | 1         | Cartridge, Secondary Fuel Filter - Specs A Through R                          |
| 5        | 149-0456                              | 1         | Gasket, Secondary Filter Bowl to Cover - Specs A Through R                    |
| 6        | 149-0455                              | 1         | Gasket, Secondary Filter Cartridge to Head Specs A Through R                  |
| 7        | 149-0493                              | 1         | Gasket, Secondary Filter Cartridge to Retainer - Specs A Through R            |
| 8        | 149-0789                              | 1         | Plug, Air Bleed - Specs A Through R   |
| 9        | 149-1073                              | 1         | Filter, Fuel - Specs A Through R Mounted Between Fuel Tank and Transfer Pump) |
| 10       | 149-0846                              | 1         | Cartridge Fuel Filter - Specs A Through R                                     |
| 11       | 502-0003                              | 2         | Connector - Begin Spec S  |
| 12       | 122-0325                              | 1         | Fuel Filter, Primary Begin Spec S   |
| 13       | 122-0326                              | 1         | Fuel Filter, Secondary Begin Spec S   |
| 14       | 149-1185                              | 1         | Adapter, Fuel Filter Begin Spec S   |
| 15       | 502-0080                              | 2         | Plug, Fuel Filter Drain Begin Spec S  |
| 16       | 501-0103                              | 1         | Line, Fuel - Secondary Filter to Injection Pump                               |
| 17       | 141-0281                              | 1         | Gasket, Air Cleaner Adapter to Engine   |
| 18       | 140-0576                              | 1         | Adapter, Air Cleaner  |
| 19       | 505-0180                              | 1         | Plug, Pipe  |
| 20       | 140-0584                              | 1         | Gasket, Air Cleaner   |
| 21       | HOSE, BREATHER                        |           |   |
|          | 123-0769                              | 1         | Spec A Only   |
|          | 503-0479                              | 1         | Specs B Through Q   |
|          | 503-0580                              | 1         | Begin Spec R  |
| 22       | 140-0595                              | 1         | Pan, Air Cleaner  |
| 23       | 140-0836                              | 1         | Element and Retainer, Air Cleaner   |
| 24       | 140-0594                              | 1         | Cover, Air Cleaner  |
| 25       | 520-0821                              | 2         | Stud, Air Cleaner Mounting  |
| 26       | 885-0020                              | 2         | Nut, Wing   |
| 27       | 154-0712                              | 1         | Heater, Air Intake (Includes Gasket)  |
| 28       | LEAD, GLOW PLUG TO AIR HEATER         |           |   |
|          | 336-1380                              | 1         | Round Type Terminal   |
|          | 336-1505                              | 1         | Blade Type Terminal   |
| 29       | 503-0171                              | 2         | Clamp, Breather Hose  |
| 30       | 526-0068                              | 1         | Washer, Flat (28/64" ID x 3/4" OD x 1/16" Thk)                                |
| 31       | 801-0074                              | 1         | Screw, Cap - Hex Head (7/16-20 x 1-3/4")                                      |
| 32       | 526-0066                              | 1         | Washer, Flat (25/64" ID x 9/16" OD x 1/16" Thk.)                              |
| 33       | 801-0053                              | 1         | Screw, Cap - Hex Head (3/8-24 x 1-3/4")                                       |
| 34       | 520-0011                              | 2         | Stud, Air Cleaner Adapter   |
| 35       | 870-0137                              | 2         | Nut, Hex (5/16-24) - Air Cleaner  |

# FUEL PUMP AND INJECTION SYSTEM



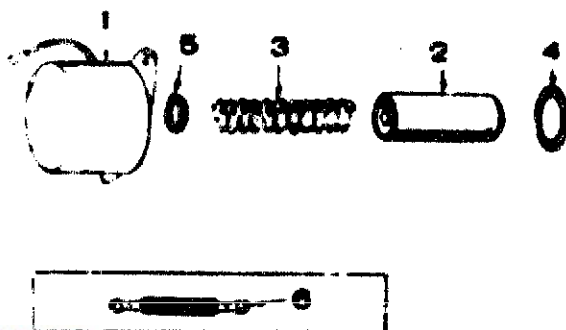
| REF. NO. | PART NO.                    | QTY. USED | PART DESCRIPTION   |
|----------|-----------------------------|-----------|--|
| 1        | 502-0002                    | 1         | Elbow, Inverted Male   |
| 2        | 149-0852                    | 1         | Pump, Fuel Transfer<br>(Includes Mounting Gasket)  |
| 3        | 149-0792                    | 1         | Gasket, Fuel Pump  |
| 4        | 149-0517                    | 1         | Gasket, Fuel Pump Bowl   |
| 5        | 149-0463                    | 1         | Screen, Fuel Pump  |
| 6        | 149-0116                    | 1         | Bowl, Fuel Pump  |
| 7        | 502-0065                    | 1         | Elbow 45° Inverted<br>Begin Spec S   |
| 8        | 149-1307                    | 2         | Washer, Flat - Fuel Pump<br>Mounting   |
| 9        | 502-0033                    | 1         | Connector, Injection Pump<br>Inlet - Begin Spec B  |
| 10       | 502-0041                    | 1         | Elbow, Injection Pump Inlet<br>Spec A Only   |
| 11       | PUMP, INJECTION<br>147-0167 | 1         | Spec A Only (NOTE: For<br>Complete Replacement Order<br>147-0180 Pump, 502-0033<br>Connector, 149-0847 Line and E154<br>Instruction Sheet) |
|          | 147-0180                    | 1         | Begin Spec B   |
| 12       | 509-0101                    | 1         | Seal "O" Ring  |
| 13       | 115-0186                    | 1         | Tappet, Injection Pump   |
| 14       | 147-0172                    | 1         | Shim Kit, Injection Pump   |
| 15       | 149-0825                    | 1         | Line, Injection Pump to Nozzle   |
| 16       | 147-0136                    | 1         | Nozzle and Holder Assembly   |
| 17       | 147-0134                    | 1         | Nozzle Only (Part of Nozzle<br>and Holder Assembly)  |
| 18       | 147-0141                    | 1         | Flange, Injection Nozzle Holdown   |
| 19       | 147-0044                    | 1         | Shield, Nozzle Heat  |
| 20       | 147-0043                    | 1         | Gasket, Heat Shield  |
| 21       | 110-0419                    | 1         | Gasket, Shield to Head   |
| 22       | LINE, NOZZLE FUEL RETURN    |           |  |
|          | 149-0858                    | 1         | Spec A Only  |
|          | 149-0847                    | 1         | Begin Spec B   |
| 23       | 502-0065                    | 1         | Elbow, Inverted (45° )   |
| 24       | 147-0133                    | 1         | Adapter, Injection Nozzle  |
| 25       | 147-0153                    | 1         | Valve, Check - Begin Spec B  |
| 26       | 800-0027                    | 2         | Screw, Cap - Hex Head<br>(5/16-18 x 7/8")  |
| 27       | 800-0031                    | 2         | Screw, Cap - Hex Head<br>(5/16-18 x 1-1/2")  |
| 28       | 800-0031                    | 2         | Screw, Cap - Hex Head<br>(5/16-18 x 2-3/4")  |
| 29       | 850-0045                    | 4         | Washer, Lock - Spring (5/16")  |
| 30       | 526-0122                    | 2         | Washer, Flat (11/32" ID x<br>23/32" OD x 10 Ga. Thk.)  |
| 31       | 502-0003                    | 1         | Connector, Inverted Male<br>Specs A Through R  |
| 32       | 147-0243                    | 1         | Gasket, Nozzle Tip   |
|          | 149-1047                    | 1         | Repair Kit, Fuel Pump<br>(Includes Diaphragm &<br>Gaskets)   |

## OIL SYSTEM



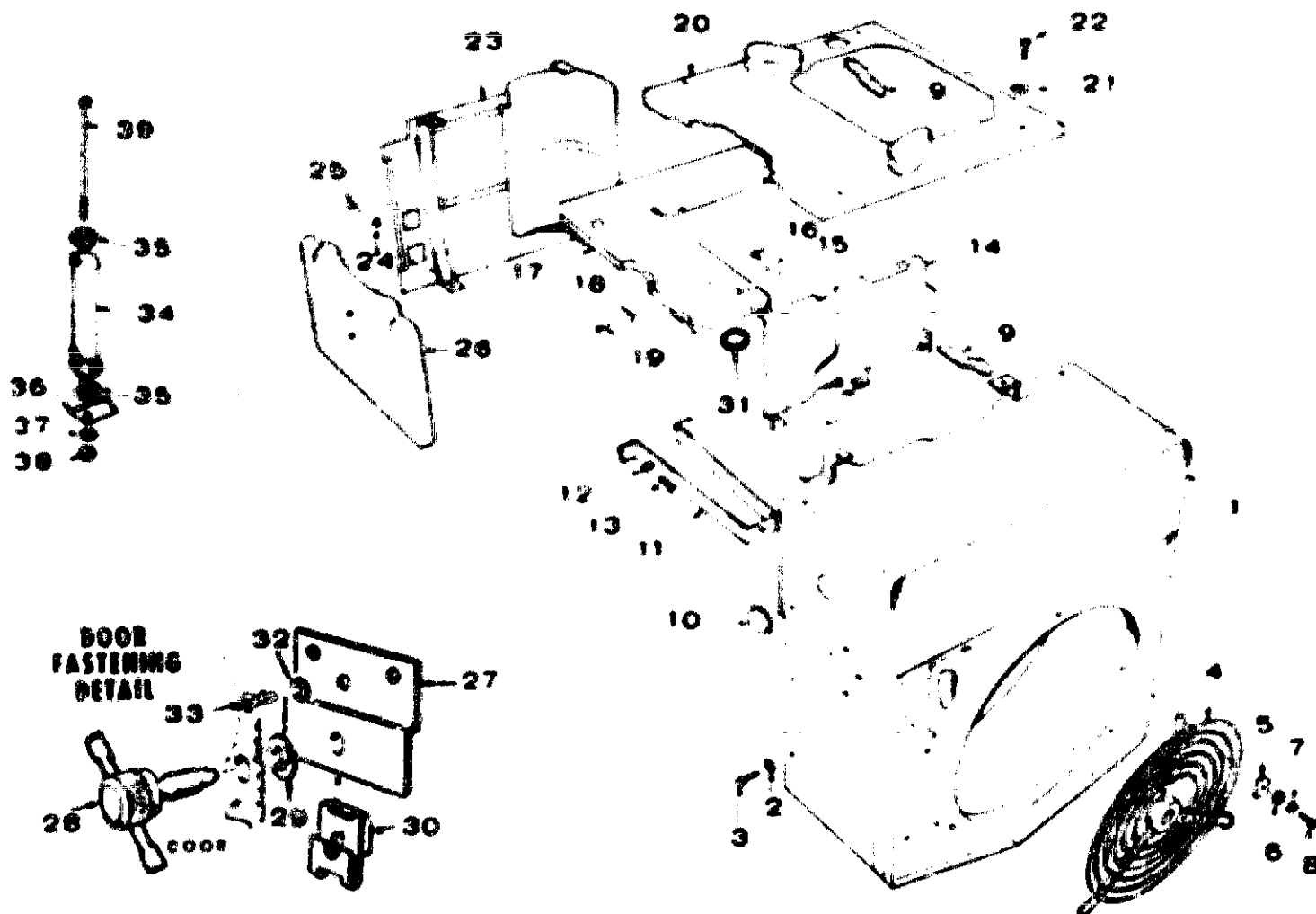
| REF. NO. | PART NO.                            | QTY. USED | PART DESCRIPTION                                |
|----------|-------------------------------------|-----------|---|
| 1        | 120-0547                            | 1         | Pump Assembly, Oil                              |
| 2        | 120-0590                            | 1         | Gasket Kit, Pump                                |
| 3        | 120-0551                            | 1         | Cup, Oil Intake                                 |
| 4        | FILTER, OIL                         |           |   |
|          | 122-0185                            | 1         | Standard (4-3/8")                               |
|          | 122-0190                            | 1         | Optional (5")                                   |
| 5        | 122-0188                            | 1         | Gasket, Adapter                                 |
| 6        | 122-0182                            | 1         | Adapter, Oil Filter                             |
| 7        | 302-0036                            | 1         | Gauge, Oil Pressure                             |
| 8        | 302-0053                            | 2         | Elbow, Street (1) Oil Gauge<br>Low Oil Pressure |
| 9        | 305-0057                            | 1         | Plug, Adapter (1/8")                            |
| 10       | 305-0274                            | 1         | Plug 1/8" - Oil Gauge Bracket                   |
|          |                                     |           | Begin Spec S                                    |
| 11       | ELBOW, OIL LINE TO FILTER ADAPTER   |           |   |
|          | 302-0019                            | 1         | Specs A Through Q                               |
|          | 302-0037                            | 1         | Begin Spec R                                    |
| 12       | LINE, ADAPTER TO CYLINDER HEAD      |           |   |
|          | 120-0582                            | 1         | Specs A Through Q                               |
|          | 120-0522                            | 1         | Begin Spec R                                    |
| 13       | CONNECTOR, RESTRICTED CYLINDER HEAD |           |   |
|          | 302-0235                            | 1         | Specs A Through Q                               |
|          | 302-0281                            | 1         | Begin Spec R                                    |
| 14       | 120-0538                            | 1         | Valve, Oil By Pass                              |
| 15       | 120-0546                            | 1         | Spring, Oil By Pass                             |
| 16       | 305-0274                            | 1         | Plug, Oil By Pass                               |
| 17       | 305-0177                            | 1         | Switch, Low Oil Pressure                        |
| 18       | 302-0256                            | 1         | Top, Restricted - Air Trap Tube                 |
| 19       | 120-0588                            | 0         | Tube, Air Trap Switch                           |
| 20       | 301-0001                            | 1         | Line, Oil Gauge - Begin<br>Spec S               |
| 21       | 302-0001                            | 1         | Top, Oil Gauge - Begin Spec S                   |

## STOP SOLENOID



| REF.<br>NO. | PART<br>NO.                     | QTY.<br>USED | PART<br>DESCRIPTION              |
|-------------|---------------------------------|--------------|----------------------------------|
| 1           | SOLENOID, DECOMPRESSION RELEASE |              |                                  |
|             | 307-0828                        | 1            | Specs A Through S                |
|             | 307-1088                        | 1            | Begin Spec T                     |
| 2           | 308-0187                        | 1            | Plunger, Solenoid (Includes Pin) |
| 3           | 308-0188                        | 1            | Spring, Solenoid Plunger         |
| 4           | 508-0018                        | 1            | Seal "O" Ring                    |
| 5           | 307-0738                        | 1            | Gasket, Solenoid Mounting        |
| 6           | 337-0051                        | 1            | Strap, Ground                    |

## AIR HOUSING

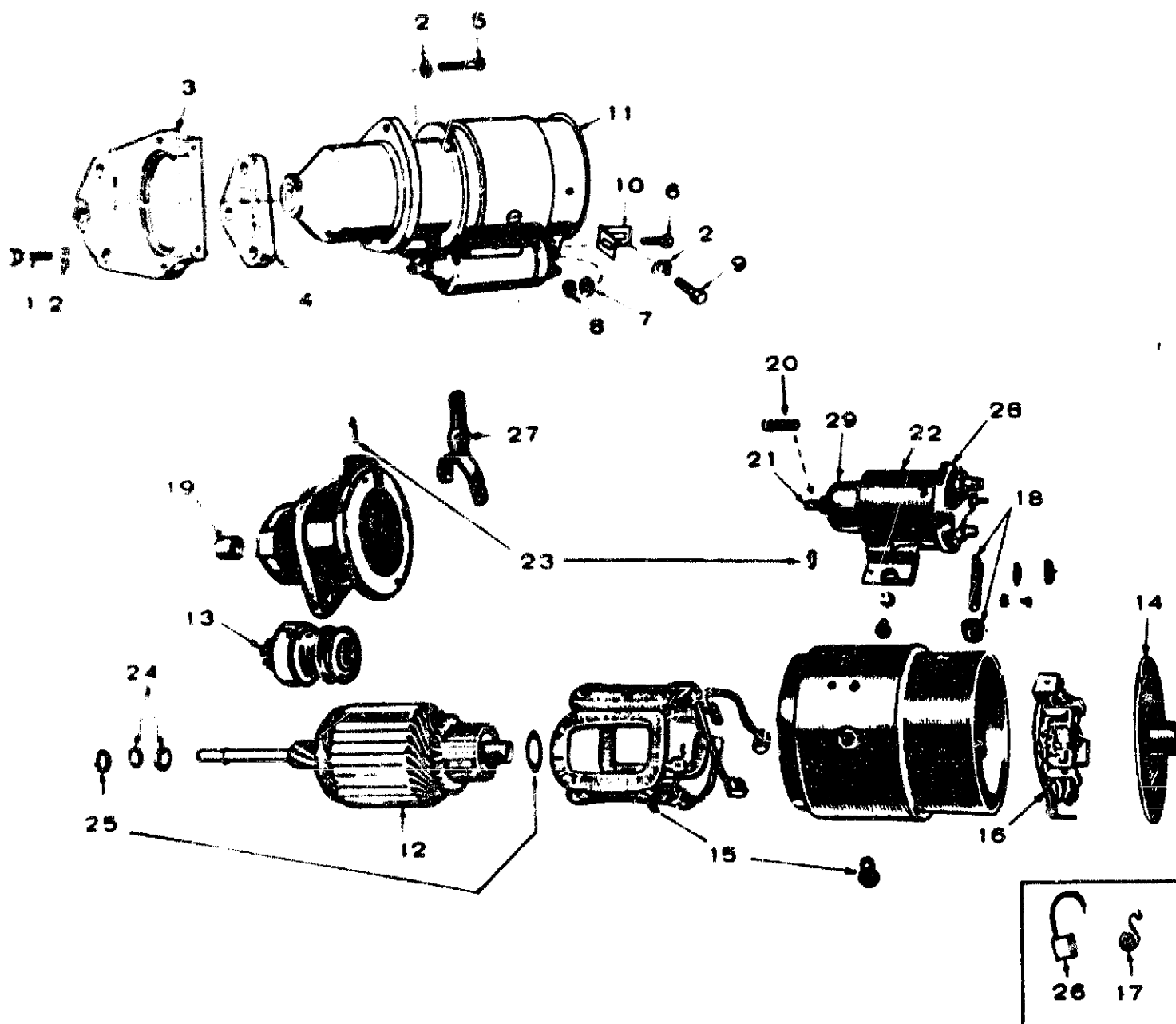


| REF. NO. | PART NO.   | QTY. USED | PART DESCRIPTION                             |
|----------|--|-----------|--|
| 1        | 134-1050   | 1         | Housing, Blower                              |
| 2        | 854-0014   | 6         | Washer, Lock (IT) 1/4"                       |
| 3        | 815-0235   | 6         | Screw, Cap - Hex Head (1/4-20 x 5/8")        |
| 4        | 134-1178   | 1         | Grille and Plate                             |
| 5        | 134-1082   | 3         | Retainer, Grille and Plate                   |
| 6        | 526-0115   | 3         | Washer, Flat (300" ID x 3/8 OD x 1/32" Thk.) |
| 7        | 850-0040   | 3         | Washer, Lock - Spring (1/4")                 |
| 8        | 820-0007   | 3         | Screw, Cap - Hex Head (1/4-20 x 1")          |
| 9        | BRACKET, BLOWER HOUSING AND CYLINDER AIR HOUSING COVER |           |  |
|          | 134-1703   | 1         | Front  |
|          | 134-1704   | 1         | Back   |
| 10       | 517-0035   | 1         | Plug, Dot Button                             |
| 11       | 134-1085   | 1         | Support, Blower Housing and Grille           |
| 12       | 850-0045   | 2         | Washer, Lock - Spring (5/16")                |
| 13       | 800-0024   | 2         | Screw, Cap - Hex Head (5/16-18 x 1/2")       |
| 14       | 134-1048   | 1         | Housing, Cylinder Air - Front                |
| 15       | 850-0040   | 4         | Washer, Lock - Spring (1/4")                 |
| 16       | 815-0235   | 4         | Screw, Cap - Hex Head (1/4-20 x 5/8")        |
| 17       | 134-1102   | 1         | Panel, Cylinder Air Housing Bottom           |
| 18       | 854-0013   | 2         | Washer, Lock IT (#12)                        |
| 19       | 815-0235   | 2         | Screw, Cap - hex Head (1/4-20 x 5/8")        |

| REF. NO. | PART NO.                | QTY. USED | PART DESCRIPTION  |
|----------|-------------------------|-----------|---|
| 20       | 134-1130                | 1         | Cover, Nozzle and Housing                               |
| 20A      | 134-1131                | 1         | Cover, Housing - Plain                                  |
| 21       | 526-0021                | 4         | Washer, Flat (17/64" ID x 3/4" OD x 1/16" Thk.)         |
| 22       | 800-0004                | 4         | Screw, Cap - Hex Head (1/4-20 x 5/8")                   |
| 23       | 134-1127                | 1         | Housing, Cylinder Air - Rear                            |
| 24       | 854-0010                | 2         | Washer, Lock - IT (#10)                                 |
| 25       | 813-0087                | 2         | Screw, Machine - Roundhead (#10-32 x 5/16")             |
| 26       | 134-1117                | 1         | Panel, Air Housing Door                                 |
| 27       | 134-1082                | 1         | Bracket, Air Housing Door                               |
| 28       | 134-1373                | 1         | Screw, Door Panel (Special)                             |
| 28A      | 134-1179                | 4         | Screw, Top Cover (Early Models)                         |
| 29       | 134-1180                | 2         | Washer, Retainer (Early Model Use) Qty of 8)            |
| 30       | 870-0184                | 5         | Nut, Clinch (1/4-20)                                    |
| 31       | GROMMET, RUBBER HOUSING |           |   |
|          | 508-0002                | 1         | For 1/2" Hole   |
|          | 508-0005                | 1         | For 9/16" Hole  |
|          | 508-0021                | 6         | For 3/4" Hole   |
| 32       | 853-0008                | 1         | Washer, Lock - ET (#8)                                  |
| 33       | 813-0088                | 1         | Screw, Machine - Round Head (10-32 x 3/8")              |
| 34       | 304-0003                | 1         | Resistor, Decompression Release Solenoid - Bagin Spec T |
| 35       | 304-0427                | 2         | Washer, Resistor Centering                              |
| 36       | 304-0292                | 1         | Insulator, Resistor                                     |
| 37       | 856-0005                | 1         | Washer, Lock - EIT (1/4")                               |
| 38       | 882-0001                | 1         | Nut, Hex (1/4-20)                                       |
| 39       | 812-0185                | 1         | Screw, Machine - Round Head (1/4-20 x 4-1/2")           |



# STARTER



| REF. NO. | PART NO. | QTY. USED | PART DESCRIPTION                        |
|----------|----------|-----------|---|
| 1        | 800-0034 | 3         | Screw, Cap - Hex Head (3/8-16 x 2")     |
| 2        | 850-0050 | 7         | Washer, Lock - Spring (3/8")            |
| 3        | 191-0512 | 1         | Flange, Mounting                        |
| 4        | 191-0311 | 1         | Spacer, Flange                          |
| 5        | 800-0051 | 2         | Screw, Cap - Hex Head (3/8-16 x 1-1/4") |
| 6        | 800-0046 | 1         | Screw, Cap - Hex Head (3/8-16 x 1-1/2") |
| 7        | 856-0010 | 1         | Washer, Lock - EIT (3/8")               |
| 8        | 864-0003 | 1         | Nut, Hex (3/8-16)                       |
| 9        | 800-0052 | 2         | Screw, Cap - Hex Head (3/8-16 x 1-1/2") |
| 10       | 191-0365 | 1         | Bracket, Support                        |
| 11       | 191-0324 | 1         | Starter                                 |
| 12       | 191-0712 | 1         | Armature                                |
| 13       | 191-0432 | 1         | Clutch                                  |
| 14       | 191-1023 | 1         | Head Assembly (Commutator End)          |

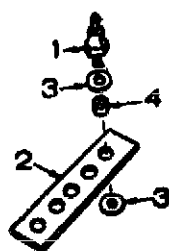
| REF. NO. | PART NO. | QTY. USED | PART DESCRIPTION                           |
|----------|----------|-----------|--|
| 15       | 191-1024 | 1         | Coil Package, Field                        |
| 16       | 191-1025 | 1         | Plate Assembly, Brush                      |
| 17       | 191-1020 | 1         | Spring Set, Brush (Set of 4)               |
| 18       | 191-1026 | 1         | Connector Package                          |
| 19       | 191-0497 | 1         | Bearing, Drive End                         |
| 20       | 191-1027 | 1         | Spring, Plunger                            |
| 21       | 191-1028 | 1         | Core Assembly, Moving                      |
| 22       | 191-0433 | 1         | Switch, Solenoid (Includes Cover and Boot) |
| 23       | 191-1029 | 1         | Yoke Parts Package                         |
| 24       | 191-1030 | 1         | Stop & Lock Ring Package Pinion            |
| 25       | 191-1031 | 1         | Thrust Washer Package, Armature            |
| 26       | 191-0434 | 1         | Brush Set                                  |
| 27       | 191-1032 | 1         | Yoke                                       |
| 28       | 191-0468 | 1         | Cover, Solenoid                            |
| 29       | 191-1134 | 1         | Boot Rubber, Solenoid                      |



# OPTIONAL EQUIPMENT PARTS SECTION

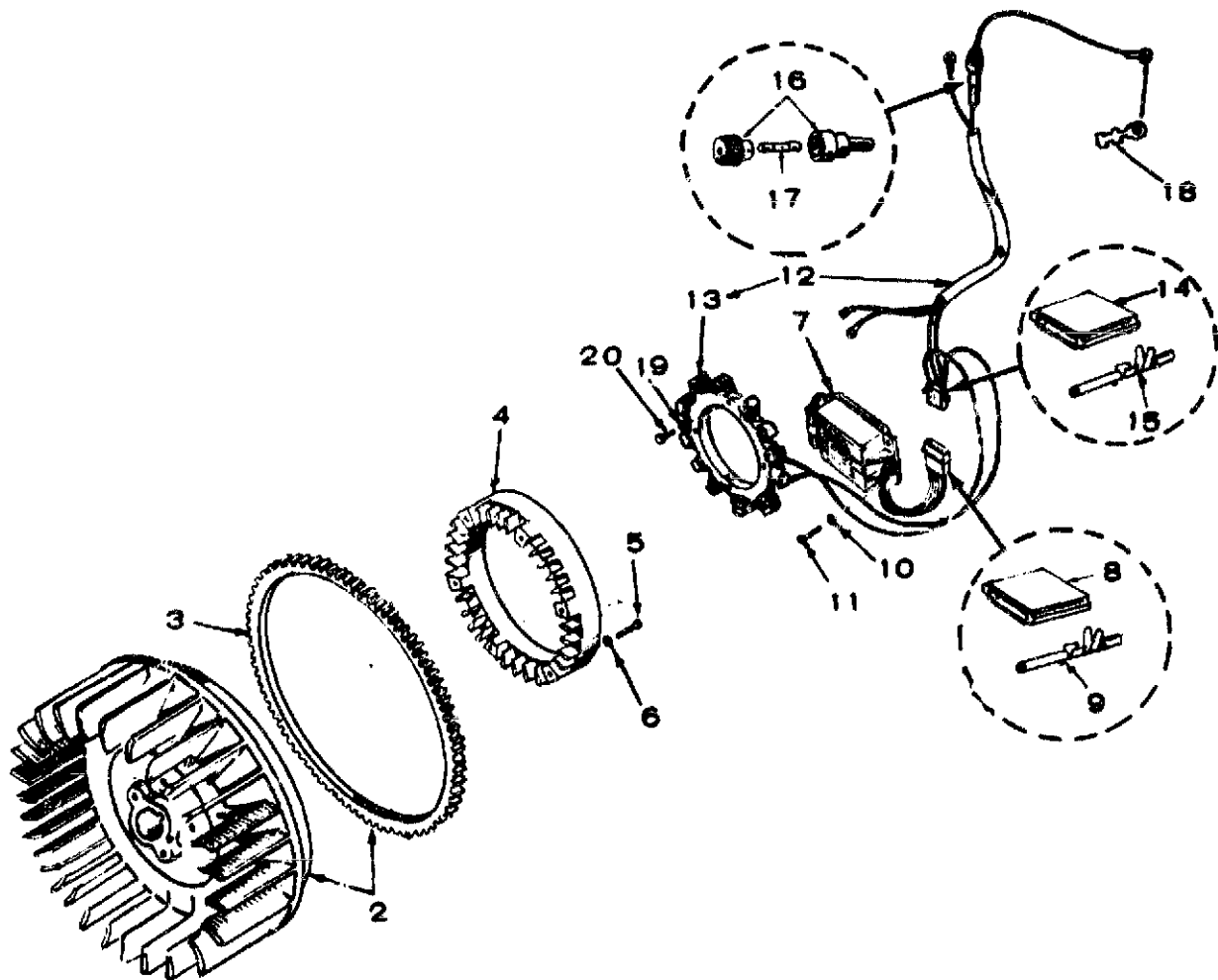
This section contains illustrated parts listing of factory installed options for these Industrial Engines. Options may not be applicable to all models; for field conversions additional parts are usually required. Optional parts listed in this section are in addition or in place of those shown in the standard engine parts section.

## OPTIONAL HIGH TEMPERATURE SWITCH



| REF. NO. | PART NO.                     | QTY. USED | PART DESCRIPTION   |
|----------|------------------------------|-----------|--|
| 1        | SWITCH, HIGH AIR TEMPERATURE |           |  |
|          | 309-0196                     | 1         | Normally Closed - Mounts on Manifold Stud                |
|          | 309-0206                     | 1         | Normally Open  |
| 2        | 309-0495                     | 1         | Bracket, High Air Temperature Switch Mounting            |
| 3        | 508-0126                     | 4         | Washer, Insulator - High Air Temperature Switch Mounting |
| 4        | 508-0127                     | 1         | Insulator, Sleeve - High Air Temperature Switch          |

# **OPTIONAL FLYWHEEL ALTERNATOR (WICO) - BEGIN SPEC T**



| REF. NO. | PART NO. | QTY. USED | PART DESCRIPTION                              |
|----------|----------|-----------|---|
| 2        | 191-0409 | 1         | Flywheel Assembly (Includes Ring Gear)        |
| 3        | 104-0423 | 1         | Gear, Ring                                    |
| 4        | 191-0400 | 1         | Rotor   |
| 5        | 812-0133 | 6         | Screw, Machine - Round Head (#12-24 x 1-1/2") |
| 6        | 850-0035 | 6         | Washer, Lock - Spring (#12)                   |
| 7        | 305-0478 | 1         | Regulator, Voltage (Includes Parts Marked †)  |
| 8        | 323-0763 | 1         | †Connector, Socket Housing                    |
| 9        | 323-0496 | 4         | †Pin, Connector (Male)                        |
| 10       | 850-0040 | 3         | Washer, Lock - Spring (1/4")                  |
| 11       | 800-0006 | 3         | Screw, Cap - Hex Head (1/4-20 x 7/8")         |
| 12       | 191-0877 | 1         | Stator Assembly (Includes Parts Marked Δ)     |

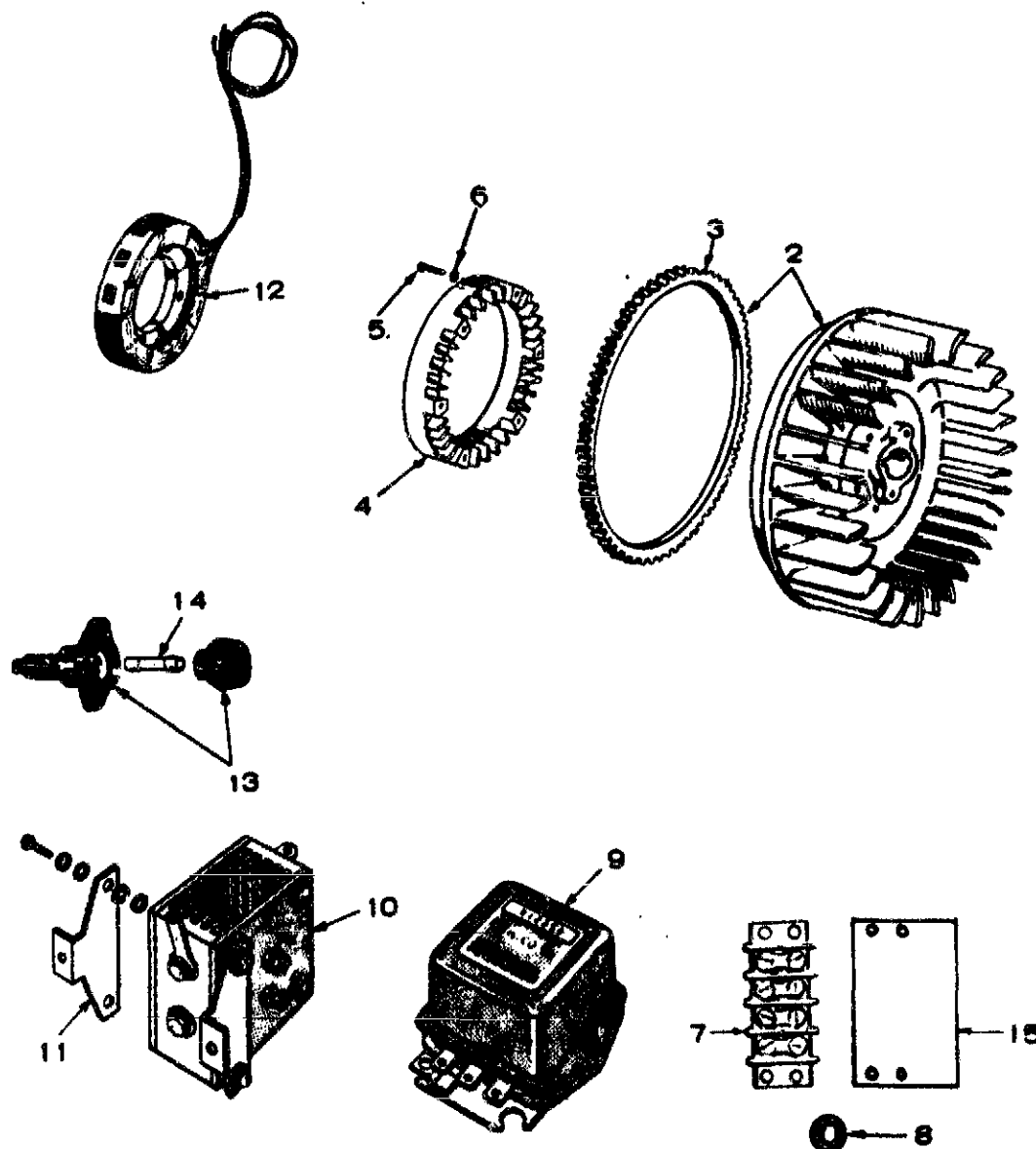
| REF. NO. | PART NO. | QTY. USED | PART DESCRIPTION                              |
|----------|----------|-----------|---|
| 13       | 191-0724 | 1         | ΔStator only (Includes Leads to Connector)    |
| 14       | 323-0759 | 1         | ΔConnector, Socket Housing                    |
| 15       | 323-0488 | 4         | ΔSocket, Connector (Female)                   |
| 16       | 321-0165 | 1         | ΔHolder, Fuse (Includes 30 Amp Fuse)          |
| 17       | 321-0162 | 1         | ΔFuse (30 Ampere)                             |
| 18       | 332-0325 | 2         | ΔTerminal                                     |
| 19       | 850-0030 | 3         | Washer, Lock - Spring (#10)                   |
| 20       | 813-0107 | 3         | Screw, Machine - Round Head (#10-32 x 1-1/4") |

Δ - Parts Included in 191-0877 Stator Assembly.

† - Parts Included in 305-0478 Regulator.

**NOTE:** Blower Housing changes with factory options. Refer to factory for Blower Housing giving Complete Model, Spec and Serial Number.

# **OPTIONAL FLYWHEEL ALTERNATOR (WICO) - | SPECS A THROUGH S**

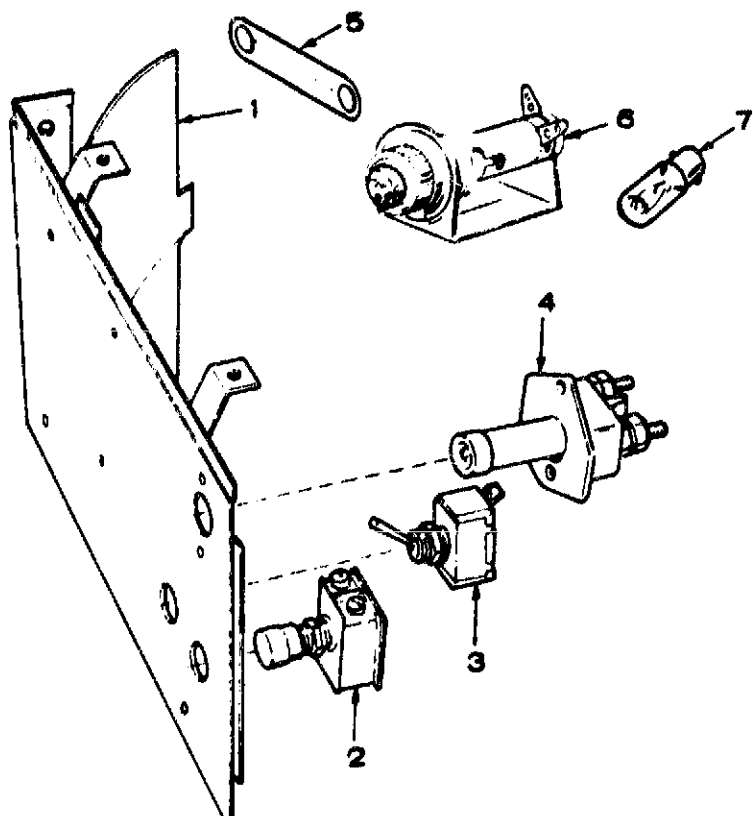


| REF. NO. | PART NO. | QTY. USED | PART DESCRIPTION                                |
|----------|----------|-----------|---|
| 2        | 191-0409 | 1         | Flywheel Assembly (Includes Ring Gear)          |
| 3        | 104-0423 | 1         | Gear, Ring                                      |
| 4        | 191-0400 | 1         | Rotor   |
| 5        | 812-0133 | 6         | Screw, Machine - Round Head (#12-24 x 1-1/2")   |
| 6        | 850-0035 | 6         | Washer, Lock - Spring (#12)                     |
| 7        | 332-0537 | 1         | Block, Terminal (4 Place)                       |
| 8        | 508-0071 | 1         | Grommet, Blower Housing                         |
| 9        | 305-0261 | 1         | Regulator, Voltage                              |
| 10       | 305-0267 | 1         | Rectifier Assembly (Includes Mounting Brackets) |

| REF. NO. | PART NO. | QTY. USED | PART DESCRIPTION                    |
|----------|----------|-----------|-------------------------------------|
| 11       | 305-0262 | 2         | Bracket, Rectifier Mounting         |
| 12       | 191-0509 | 1         | Stator                              |
| 13       | 321-0103 | 1         | Holder, Fuse (Includes 20 Amp Fuse) |
| 14       | 321-0128 | 1         | Fuse (20 Amp)                       |
| 15       | 332-0672 | 1         | Strip, Marker                       |

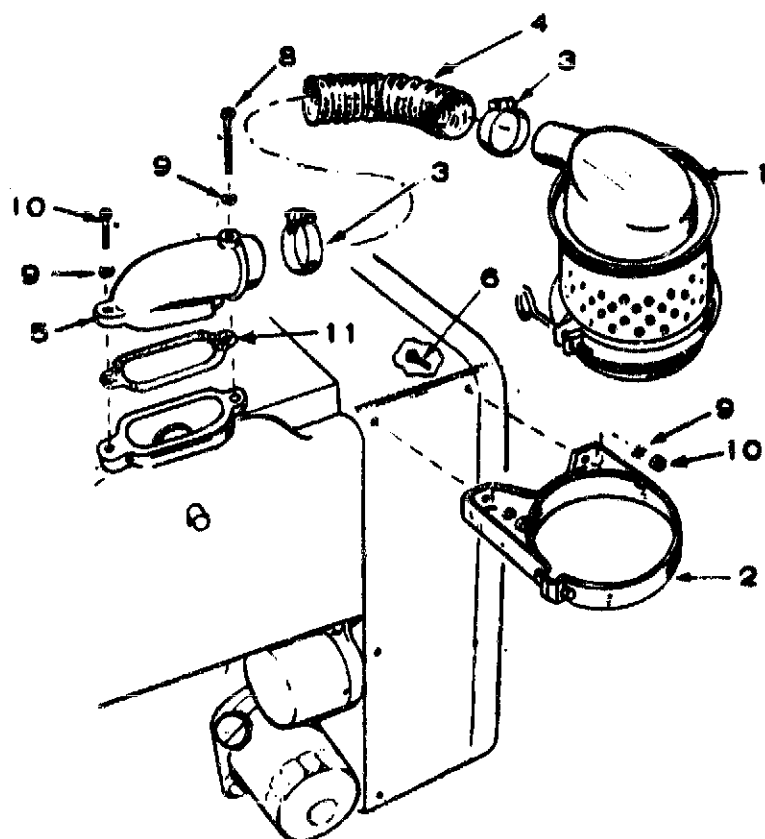
**NOTE:** Blower Housing changes with factory options. Refer to factory for Blower Housing giving Complete Model, Spec and Serial Number.

## OPTIONAL CONTROL (ENGINE)



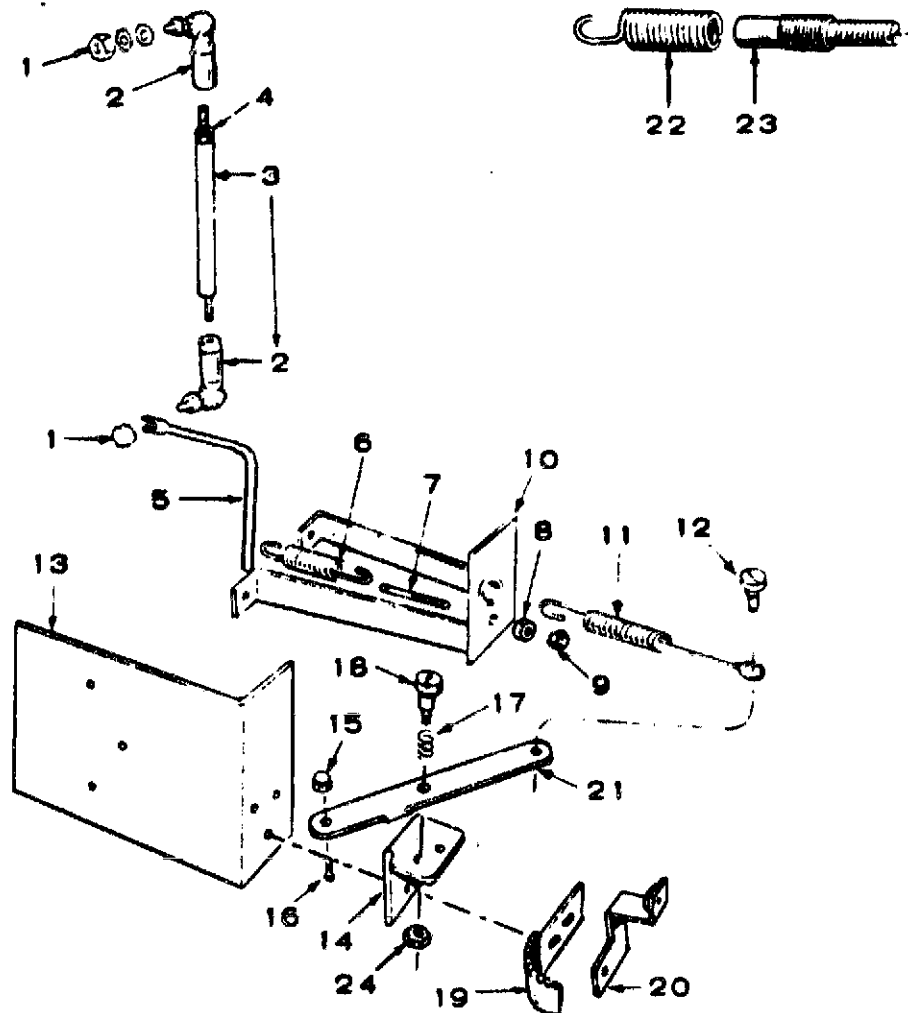
| REF. NO. | PART NO.   | QTY. USED | PART DESCRIPTION  |
|----------|--|-----------|---|
| 1        | HOUSING, CYLINDER AIR - REAR (For Engines with Start Switch, Glow Plug Switch and Fuel Solenoid Switch. For Engines with Additional Controls refer to factory) |           |   |
|          | 134-2246   | 1         | Begin Spec R  |
|          | 134-1511   | 1         | Specs A Through Q   |
| 2        | 308-0198   | 1         | Switch, Start   |
| 3        | 308-0007   | 1         | Switch, Fuel Solenoid   |
| 4        | 308-0028   | 1         | Switch, Glow Plug   |
| 5        | 332-0592   | 1         | Jumper, Terminal (Start Switch on Engines with Oil Pressure Switch) |
| 6        | 322-0069   | 1         | Light, Pilot - Red (Engines with Charging Alternator)               |
| 7        | 322-0017   | 1         | Lamp, Pilot Light (Engines with Charging Alternator)                |

## OPTIONAL OIL BATH AIR CLEANER



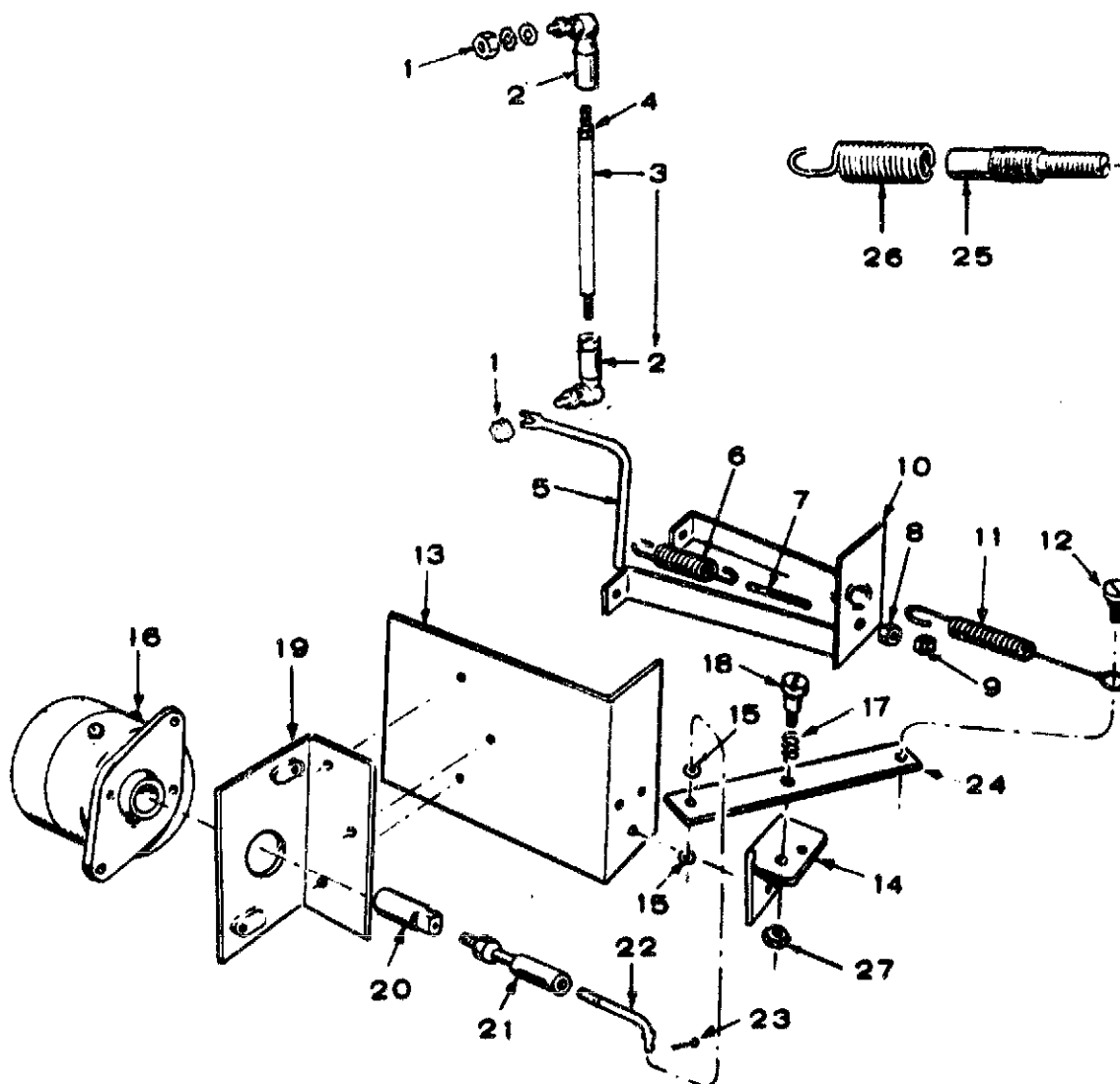
| REF. NO. | PART NO. | QTY. USED | PART DESCRIPTION                      |
|----------|----------|-----------|---------------------------------------|
| 1        | 140-0500 | 1         | Cleaner, Air                          |
| 2        | 140-0519 | 1         | Band, Air Cleaner                     |
| 3        | 503-0365 | 2         | Clamp, Air Cleaner Hose               |
| 4        | 503-0444 | 1         | Hose, Air Cleaner                     |
| 5        | 140-1593 | 1         | Adapter, Air Cleaner                  |
| 6        | 800-0003 | 2         | Screw, Cap - Hex Head (1/4-20 x 1/2") |
| 7        | 800-0007 | 1         | Screw, Cap - Hex Head (1/4-20 x 1")   |
| 8        | 800-0015 | 1         | Screw, Cap - Hex Head (1/4-20 x 3")   |
| 9        | 850-0040 | 4         | Washer, Lock - Spring (1/4")          |
| 9        | 850-0040 | 4         | Washer, Lock - Spring (1/4")          |
| 10       | 862-0001 | 2         | Nut, Hex (1/4-20)                     |
| 11       | 140-0584 | 1         | Gasket, Adapter Mtg.                  |

# **OPTIONAL GOVERNOR CONTROL (VARIABLE SPEED)**



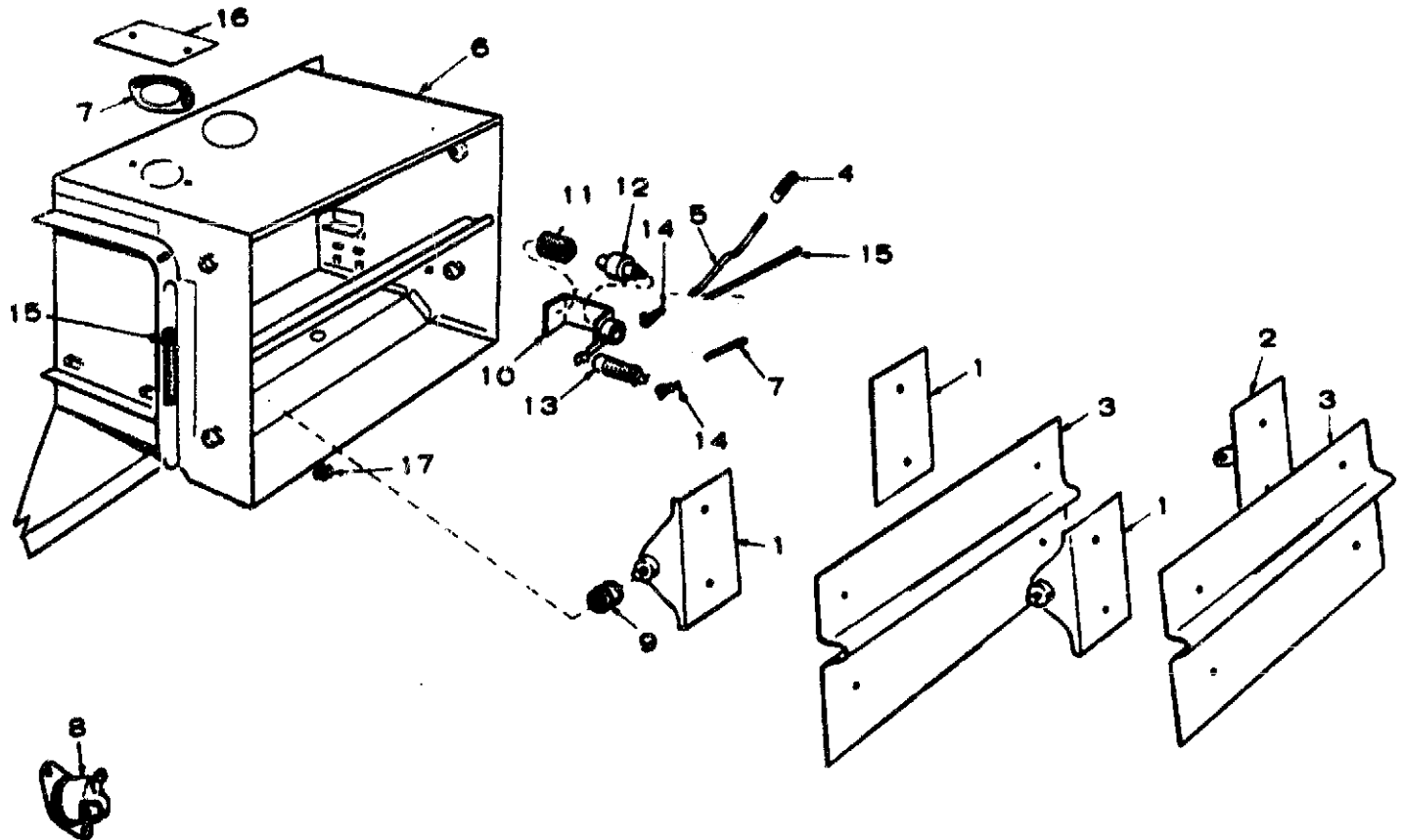
| REF. NO. | PART NO.                           | QTY. USED | PART DESCRIPTION                      | REF. NO. | PART NO.                 | QTY. USED | PART DESCRIPTION                                  |
|----------|------------------------------------|-----------|---------------------------------------|----------|--------------------------|-----------|---|
| 1        | 870-0131                           | 2         | Nut, Hex - Locking (#10-32)           | 11       | SPRING, GOVERNOR CONTROL |           |   |
| 2        | JOINT, BALL                        |           |                                       | 150-0920 | 1                        |           | Speed Range 1200 to 1800 RPM (1-15/16" Coil)      |
|          | 150-0939                           | 2         | Begin Spec R                          | 150-0919 | 1                        |           | Speed Range 1200 to 2500 RPM (1-13/32" Coil)      |
|          | 150-0974                           | 2         | Specs A Through Q                     | 12       | 150-0918                 | 1         | Screw (Special)                                   |
| 3        | LINK                               |           |                                       | 13       | 150-0917                 | 1         | Bracket, Governor Control Mounting                |
|          | 150-1206                           | 1         | Begin Spec R                          | 14       | 150-0916                 | 1         | Bracket, Lever Arm                                |
|          | 150-0883                           | 1         | Specs A Through Q                     | 15       | 153-0014                 | 1         | Nut, Choke Wire Stop                              |
| 4        | 871-0010                           | 2         | Nut, Hex (#10-32)                     | 16       | 810-0074                 | 1         | Screw, Machine - Round Head Brass (#8-32 x 3/16") |
| 5        | 150-1101                           | 1         | Arm Assembly, Governor - Begin Spec R | 17       | 150-0907                 | 1         | Spring, Speed Control Lever Tension               |
| 6        | 150-1084                           | 1         | Spring, Governor - Begin Spec R       | 18       | 150-0915                 | 1         | Screw, Special                                    |
| 7        | 150-1032                           | 1         | Stud, Governor Adjusting Begin Spec R | 19       | 150-0914                 | 1         | Ratchet Speed Control                             |
| 8        | NUT, HEX - GOVERNOR ADJUSTING STUD |           |                                       | 20       | 150-0978                 | 1         | Bracket, Governor Stop                            |
|          | 882-0003                           | 1         | Begin Spec R (3/8-16)                 | 21       | 150-0908                 | 1         | Lever, Speed Control                              |
|          | 104-0091                           | 1         | Specs A Through Q (3/8-24)            | 22       | 150-0821                 | 1         | Spring, Governor Specs A Through Q                |
| 9        | NUT, SELF LOCKING (PALNUT)         |           |                                       | 23       | 150-0822                 | 1         | Stud, Governor Adjusting Specs A Through Q        |
|          | 870-0133                           | 1         | Begin Spec R (3/8-16)                 | 24       | 115-0025                 | 1         | Nut (Special)                                     |
|          | 870-0130                           | 1         | Specs A Through Q (3/8-24)            |          |                          |           |   |
| 10       | BRACKET ASSEMBLY, GOVERNOR         |           |                                       |          |                          |           |   |
|          | 150-1105                           | 1         | Begin Spec R                          |          |                          |           |   |
|          | 150-0912                           | 1         | Specs A Through Q                     |          |                          |           |   |

## OPTIONAL GOVERNOR CONTROL (TWO SPEED)



| REF. NO. | PART NO. | QTY. USED | PART DESCRIPTION  | REF. NO. | PART NO. | QTY. USED | PART DESCRIPTION  |
|----------|----------|-----------|---|----------|----------|-----------|---|
| 1        | 870-0131 | 2         | Nut, Hex - Locking (#10-32)                                 | 11       | 150-0920 | 1         | SPRING, GOVERNOR CONTROL<br>Speed Range 1200 to 1800 RPM<br>(1-15/16" Coil) |
| 2        | 150-0939 | 2         | JOINT, BALL<br>Begin Spec R                                 |          | 150-0919 | 1         | Speed Range 1200 to 2500 RPM<br>(1-13/32" Coil)                             |
|          | 150-0974 | 2         | Specs A Through Q   | 12       | 150-0918 | 1         | Screw (Special)   |
| 3        | 150-1201 | 1         | LINK<br>Begin Spec R  | 13       | 150-0917 | 1         | Bracket, Governor Control Mtg.  |
|          | 150-0883 | 1         | Specs A Through Q   | 14       | 150-0916 | 1         | Bracket, Lever Arm  |
| 4        | 871-0010 | 2         | Nut, Hex (#10-32)   | 15       | 526-0116 | 2         | Washer, Flat (.200" ID x<br>3/8" OD x 1/32" Thk.)                           |
| 5        | 150-1099 | 1         | Arm Assembly, Governor<br>Begin Spec R                      | 16       | 307-0626 | 1         | Solenoid, Governor Control  |
| 6        | 150-1084 | 1         | Spring, Governor - Begin Spec R                             | 17       | 150-0907 | 1         | Spring, Speed Control Lever<br>Tension                                      |
| 7        | 150-1083 | 1         | Stud, Governor Adjusting<br>Begin Spec R                    | 18       | 150-0915 | 1         | Screw, Special  |
| 8        | 862-0003 | 1         | NUT, HEX - GOVERNOR ADJUSTING STUD<br>Begin Spec R (3/8-16) | 19       | 150-0906 | 1         | Bracket, Solenoid Mounting  |
|          | 104-0091 | 1         | Specs A Through Q<br>(3/8-24)                               | 20       | 150-0905 | 1         | Plunger, Solenoid   |
| 9        | 870-0133 | 1         | NUT, SELF LOCKING (PALNUT)<br>Begin Spec R (3/8-16)         | 21       | 150-0825 | 1         | Joint, Ball   |
|          | 870-0130 | 1         | Specs A Through Q (3/8-24)                                  | 22       | 150-0823 | 1         | Rod, Solenoid to Lever  |
| 10       | 150-1106 | 1         | BRACKET ASSEMBLY, GOVERNOR<br>Begin Spec R                  | 23       | 516-0036 | 1         | Key, Cotter - Solenoid Rod  |
|          | 150-0912 | 1         | Specs A Through Q   | 24       | 150-0904 | 1         | Lever, Control  |
|          |          |           |   | 25       | 150-0822 | 1         | Stud, Governor Adjusting<br>Specs A Through Q                               |
|          |          |           |   | 26       | 150-0821 | 1         | Spring, Governor - Specs A<br>Through Q                                     |
|          |          |           |   | 27       | 115-0026 | 1         | Nut (Special)   |

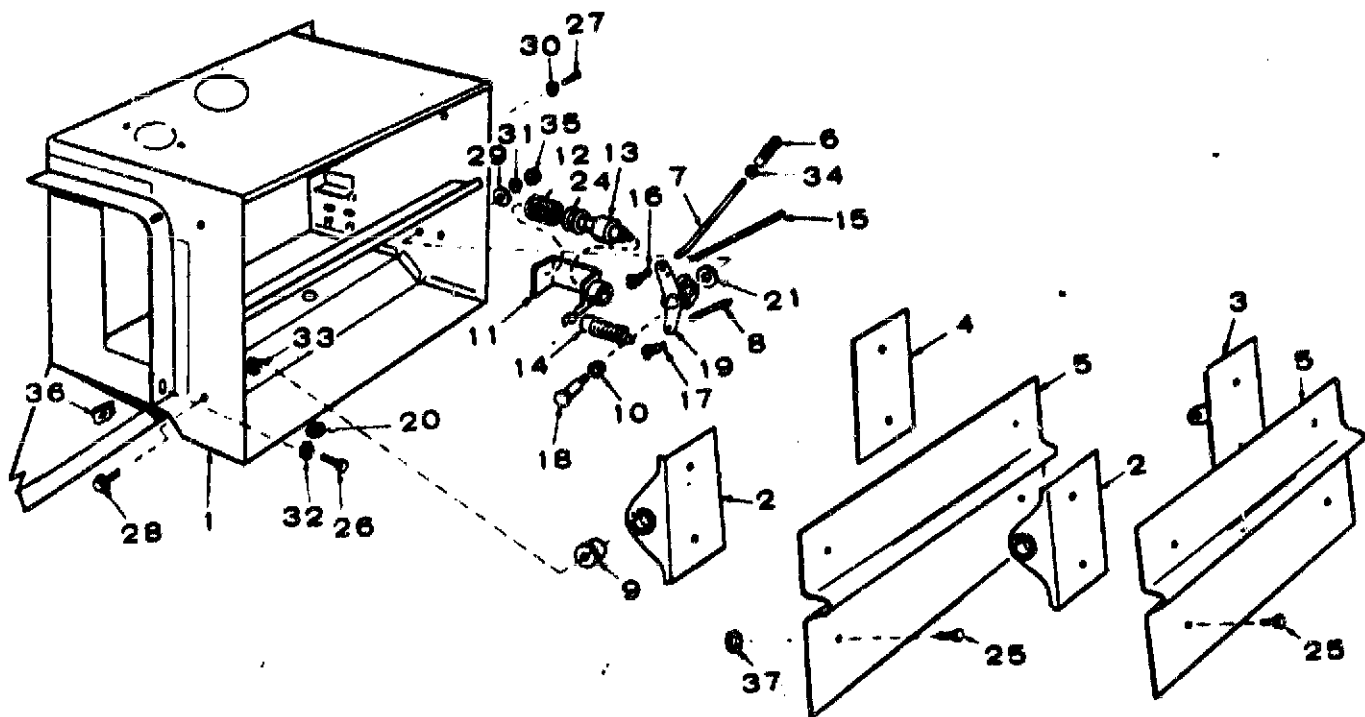
# **OPTIONAL AIR SHUTTER DISCHARGE - SPEC A THROUGH R**



| REF. NO. | PART NO. | QTY. USED | PART DESCRIPTION   | REF. NO. | PART NO. | QTY. USED | PART DESCRIPTION              |
|----------|----------|-----------|--|----------|----------|-----------|-------------------------------|
|          | 143-1253 | 1         | Shutter Assembly, Complete (External Springs) - For replacement order 134-1809 | 9        | 134-1248 | 4         | Bearing, Shutter              |
| 1        | 134-1242 | 3         | Bracket and Pivot  | 10       | 134-1244 | 1         | Bracket and Guide, Vernatherm |
| 2        | 134-1238 | 1         | Bracket, Shaft and Pin Assembly  | 11       | 134-0656 | 1         | Spring, Vernatherm Element    |
| 3        | 134-1256 | 2         | Shutter  | 12       | 309-0085 | 1         | Element, Vernatherm           |
| 4        | 150-1358 | 1         | Joint, Ball  | 13       | 134-0658 | 1         | Spring, Shutter Return        |
| 5        | 134-1247 | 1         | Rod, Shutter Control   | 14       | 518-0006 | 1         | Clip, Rod End                 |
| 6        |          | 1         | Duct only - Not Sold Separately  | 15       | 134-1437 | 2         | Spring, Shutter Pivot         |
| 8        | 309-0162 | 1         | Switch, Hi-Temperature Specs A Through N (Mounts on Air Ducts)                 | 17       | 508-0002 | 1         | Grommet, Rubber               |

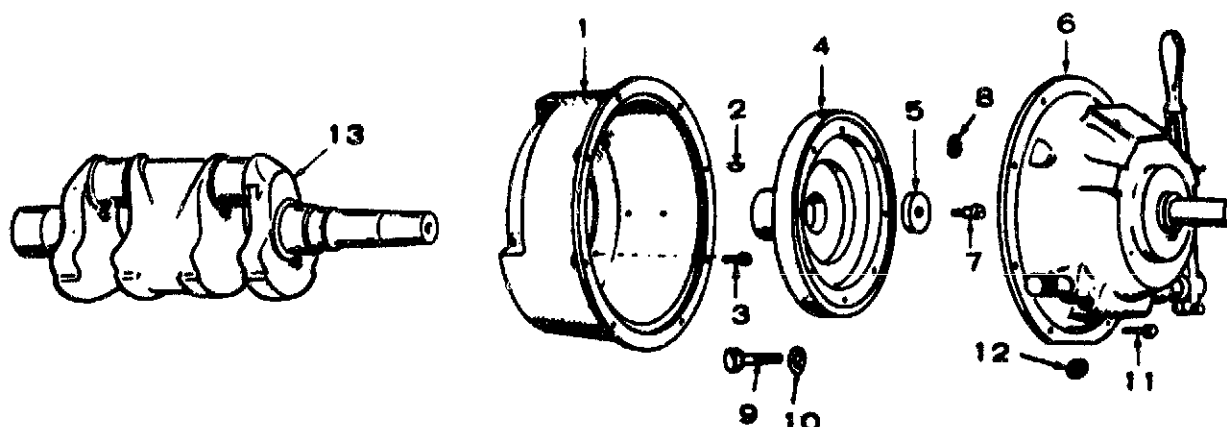


# **OPTIONAL AIR SHUTTER DISCHARGE - BEGIN SPEC S**



| REF. NO. | PART NO. | QTY. USED | PART DESCRIPTION                              | REF. NO. | PART NO. | QTY. USED | PART DESCRIPTION                                  |
|----------|----------|-----------|---|----------|----------|-----------|---|
|          | 134-1809 | 1         | Shutter Assembly, Complete (Internal Springs) | 20       | 508-0002 | 1         | Grommet, Rubber                                   |
| 1        | 134-1806 | 1         | Duct only, Air Outlet                         | 21       | 526-0213 | 1         | Washer, Actuating Shaft                           |
| 2        | 134-2411 | 2         | Bracket and Pivot, Shutter                    | 24       | 526-0175 | 2         | Washer, Flat (41/64" ID x 29/32" OD x 1/16" Thk.) |
| 3        | 134-1802 | 1         | Bracket and Pivot, Shutter and Rod            | 25       | 815-0194 | 8         | Screw, Cap - Hex Head (#10-32 x 3/8")             |
| 4        | 134-1801 | 1         | Bracket and Pivot, Shutter and Spring         | 26       | 815-0235 | 3         | Screw, Cap - Hex Head (1/4-20 x 5/8")             |
| 5        | 134-1808 | 2         | Shutter, Air Outlet                           | 27       | 813-0097 | 2         | Screw, Machine - Round Head (#10-32 x 5/16")      |
| 6        | 150-1358 | 1         | Joint, Ball                                   | 28       | 821-0010 | 4         | Screw, Cap - Hex Head Locking (1/4-20 x 1/2")     |
| 7        | 134-1806 | 1         | Rod, Shutter Control - Upper                  | 29       | 526-0113 | 1         | Washer, Flat (11/32" ID x 1" OD x 3/32" Thk.)     |
| 8        | 134-1607 | 1         | Rod, Shutter Control - Lower                  | 30       | 853-0008 | 2         | Washer, Lock - ET (#8)                            |
| 9        | 134-2900 | 4         | Bearing, Shutter                              | 31       | 853-0016 | 1         | Washer, Lock - ET (5/16")                         |
| 10       | 134-1248 | 2         | Bearing, Actuating Arm                        | 32       | 853-0013 | 3         | Washer, Lock - ET (1/4")                          |
| 11       | 134-1610 | 1         | Bracket and Guide Vernatherm                  | 33       | 856-0006 | 4         | Washer, Lock - EIT (1/4")                         |
| 12       | 134-0656 | 1         | Spring, Vernatherm Element                    | 34       | 870-0053 | 1         | Nut, Hex - Locking (#10-32)                       |
| 13       | 309-0085 | 1         | Element, Vernatherm                           | 35       | 864-0002 | 1         | Nut, Jam - Hex (5/16-18)                          |
| 14       | 134-0658 | 1         | Spring, Shutter Return - Lower                | 36       | 870-0178 | 3         | Nut, Clinch (1/4-20)                              |
| 15       | 134-1817 | 1         | Spring, Shutter Return - Upper                | 37       | 870-0131 | 8         | Nut, Lock (#10-32)                                |
| 16       | 518-0004 | 1         | Clip, Rod End - Right Side                    |          |          |           | Shutter Mounting                                  |
| 17       | 518-0006 | 2         | Clip, Rod End - Left Side                     |          |          |           |   |
| 18       | 134-1605 | 1         | Shaft, Actuating Arm                          |          |          |           |   |
| 19       | 134-1604 | 1         | Arm, Actuating                                |          |          |           |   |

## OPTIONAL CLUTCH (ROCKFORD)

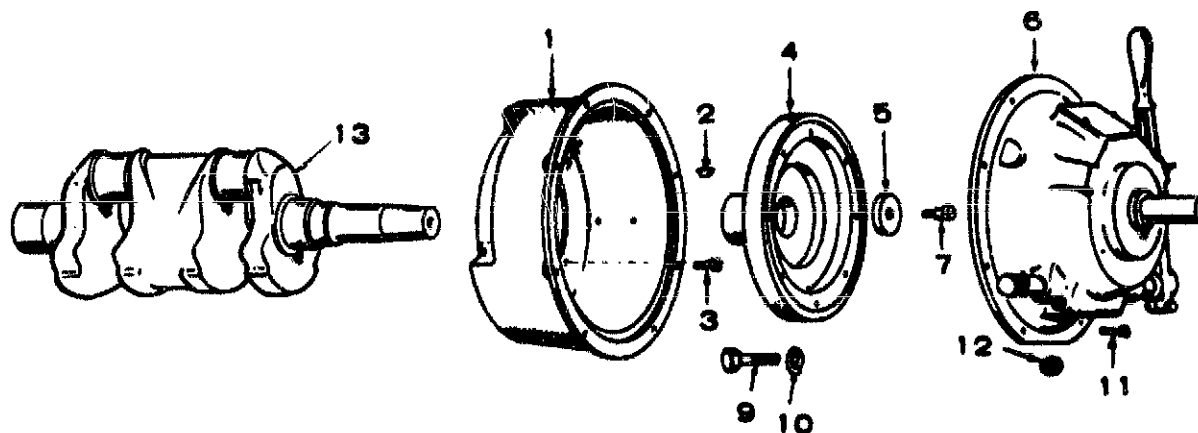


| REF. NO. | PART NO. | QTY. USED | PART DESCRIPTION                         |
|----------|----------|-----------|--|
| 1        | 190-0251 | 1         | Housing, Clutch                          |
| 2        | 515-0006 | 1         | Key, Clutch                              |
| 3        | 805-0019 | 4         | Bolt, Place (3/8-16 x 1-7/16")           |
| 4        | 190-0252 | 1         | Flange, Adapter                          |
| 5        | 190-0254 | 1         | Washer, Flat - Special                   |
| 6        | 190-0258 | 1         | Clutch Assembly                          |
| 7        | 800-0549 | 1         | Screw, Cap - Hex Head (7/16-14 x 1-3/4") |
| 8        | 850-0055 | 1         | Washer, Lock - Spring (7/16")            |
| 9        | 800-0030 | 8         | Screw, Cap - Hex Head (5/16-18 x 1-1/4") |

| REF. NO. | PART NO. | QTY. USED | PART DESCRIPTION                        |
|----------|----------|-----------|---|
| 10       | 850-0045 | 8         | Washer, Lock - Spring (5/16")           |
| 11       | 800-0051 | 8         | Screw, Cap - Hex Head (3/8-16 x 1-1/4") |
| 12       | 850-0050 | 8         | Washer, Lock - Spring (3/8")            |
| 13       | 104-0462 | 1         | Crankshaft                              |

**NOTE:** For Components, Contact your nearest Rockford Clutch dealer. Borg Warner Corporation - Rockford Illinois 61100.

## OPTIONAL CLUTCH (TWIN DISC)



| REF. NO. | PART NO. | QTY. USED | PART DESCRIPTION                         |
|----------|----------|-----------|--|
| 1        | 190-0251 | 1         | Housing, Clutch                          |
| 2        | 515-0006 | 1         | Key, Clutch                              |
| 3        | 805-0019 | 4         | Bolt, Place (3/8-16 x 1-7/16")           |
| 4        | 190-0253 | 1         | Flange, Adapter                          |
| 5        | 190-0254 | 1         | Washer, Flat - Special                   |
| 6        | 190-0325 | 1         | Clutch Assembly                          |
| 7        | 800-0549 | 1         | Screw, Cap - Hex Head (7/16-14 x 1-3/4") |
| 8        | 850-0055 | 1         | Washer, Lock - Spring (7/16")            |
| 9        | 800-0030 | 8         | Screw, Cap - Hex Head (5/16-18 x 1-1/4") |

| REF. NO. | PART NO. | QTY. USED | PART DESCRIPTION                        |
|----------|----------|-----------|---|
| 10       | 850-0045 | 8         | Washer, Lock - Spring (5/16")           |
| 11       | 800-0051 | 8         | Screw, Cap - Hex Head (3/8-16 x 1-1/4") |
| 12       | 850-0050 | 8         | Washer, Lock - Spring (3/8")            |
| 13       | 104-0462 | 1         | Crankshaft                              |

**NOTE:** For Components Contact your nearest Twin Disc clutch dealer. Racine, Wisconsin 53403

SPECIAL PARTS LIST FOR **MODEL** DJA-MS **SPEC** 28T  
FOR STANDARD PARTS REFER TO **CATALOG** 967-0413 **KEY NO.** -  
OPTIONAL GROUPS IN CATALOG ARE LISTED BY GROUP NO. BELOW WHEN USED.

| PART NO. | QTY. | DESCRIPTION   | PART NO. | QTY. | DESCRIPTION |
|----------|------|---|----------|------|-------------|
|          |      | Variable Speed Governor Control<br>(1,200 To 2,500 RPM) |          |      |             |
| 134-1358 | 1    | Housing, Blower   |          |      |             |

SPECIAL PARTS LIST FOR **MODEL** DJA-MS **SPEC** 1331T  
 FOR STANDARD PARTS REFER TO **CATALOG** 967-0413 **KEY NO.** -  
 OPTIONAL GROUPS IN CATALOG ARE LISTED BY GROUP NO. BELOW WHEN USED.

| PART NO. | QTY. | DESCRIPTION                                 | PART NO. | QTY. | DESCRIPTION |
|----------|------|---|----------|------|-------------|
| 333-0107 | 1    | Plug, Glow (Includes Gasket)                |          |      |             |
| 110-0546 | 1    | Gasket, Glow Plug                           |          |      |             |
| 307-1099 | 1    | Solenoid, Stop                              |          |      |             |
| 304-0078 | 1    | Resistor, Decompression<br>Release Solenoid |          |      |             |
| 140-0734 | 1    | Adapter, Air Cleaner                        |          |      |             |
| 140-1703 | 1    | Plate, Heater                               |          |      |             |
| 140-1704 | 1    | Gasket, Heater Plate                        |          |      |             |
| 154-0712 | 2    | Heater, Air Intake (Includes<br>Gasket)     |          |      |             |
| 508-0102 | 2    | Washer, Heater Plate (Mica)                 |          |      |             |
| 508-0103 | 2    | Bushing, Heater Plate (Mica)                |          |      |             |

SPECIAL PARTS LIST FOR **MODEL** DJA-MS **SPEC** 1832T  
FOR STANDARD PARTS REFER TO **CATALOG** 967-0413 **KEY NO.** -  
OPTIONAL GROUPS IN CATALOG ARE LISTED BY GROUP NO. BELOW WHEN USED.

| PART NO. | QTY. | DESCRIPTION                            | PART NO. | QTY. | DESCRIPTION |
|----------|------|--|----------|------|-------------|
|          |      | Flywheel Alternator (Wico - 20 Ampere) |          |      |             |
| 134-2241 | 1    | Housing, Blower                        |          |      |             |

SPECIAL PARTS LIST FOR **MODEL** DJA-MS **SPEC** 1918T  
FOR STANDARD PARTS REFER TO **CATALOG** 967-0413 **KEY NO.** -  
OPTIONAL GROUPS IN CATALOG ARE LISTED BY GROUP NO. BELOW WHEN USED.

| PART NO. | QTY. | DESCRIPTION   | PART NO. | QTY. | DESCRIPTION |
|----------|------|---|----------|------|-------------|
|          |      | Flywheel Alternator (Wico - 20 Ampere)<br>Variable Speed Governor Control<br>(1,200 To 2,500 RPM) |          |      |             |
| 134-2242 | 1    | Housing, Blower   |          |      |             |

SPECIAL PARTS LIST FOR **MODEL** DJA-MF **SPEC** 2311T  
 FOR STANDARD PARTS REFER TO **CATALOG** 967-0413 **KEY NO.** -  
 OPTIONAL GROUPS IN CATALOG ARE LISTED BY GROUP NO. BELOW WHEN USED.

| PART NO.   | QTY. | DESCRIPTION     | PART NO. | QTY. | DESCRIPTION |
|--|------|-----------------|----------|------|-------------|
| Flywheel Alternator (Wico - 20 Ampere)<br>Variable Speed Governor Control<br>(1,200 To 2,500 RPM)<br>Clutch (Rockford) |      |                 |          |      |             |
| 134-2242   | 1    | Housing, Blower |          |      |             |



SPECIAL PARTS LIST FOR **MODEL** DJA-MF **SPEC** 2320T  
FOR STANDARD PARTS REFER TO **CATALOG** 967-0413 **KEY NO.** -  
OPTIONAL GROUPS IN CATALOG ARE LISTED BY GROUP NO. BELOW WHEN USED.

| PART NO. | QTY. | DESCRIPTION                            | PART NO. | QTY. | DESCRIPTION |
|----------|------|--|----------|------|-------------|
|          |      | Flywheel Alternator (Wico - 20 Ampere) |          |      |             |
|          |      | Variable Speed Governor Control        |          |      |             |
|          |      | (1,200 To 2,500 RPM)                   |          |      |             |
|          |      | Clutch (Rockford)                      |          |      |             |
|          |      | Control (Engine)                       |          |      |             |
| 134-2242 | 1    | Housing, Blower                        |          |      |             |

SPECIAL PARTS LIST FOR **MODEL** DJA-ME **SPEC** 2407T  
FOR STANDARD PARTS REFER TO **CATALOG** 967-0413 **KEY NO.** -  
OPTIONAL GROUPS IN CATALOG ARE LISTED BY GROUP NO. BELOW WHEN USED.

| PART NO. | QTY. | DESCRIPTION        | PART NO. | QTY. | DESCRIPTION |
|----------|------|--------------------|----------|------|-------------|
|          |      | Clutch (Twin Disc) |          |      |             |

SPECIAL PARTS LIST FOR **MODEL** DJA-MS **SPEC** 2422T  
FOR STANDARD PARTS REFER TO **CATALOG** 967-0413 **KEY NO.** -  
OPTIONAL GROUPS IN CATALOG ARE LISTED BY GROUP NO. BELOW WHEN USED.

| PART NO. | QTY. | DESCRIPTION  | PART NO. | QTY. | DESCRIPTION |
|----------|------|--|----------|------|-------------|
|          |      | Flywheel Alternator (Wico - 20 Ampere)<br>Control (Engine) |          |      |             |
| 134-2241 | 1    | Housing, Blower  |          |      |             |

SPECIAL PARTS LIST FOR **MODEL** DJA-MS **SPEC** 2450T  
 FOR STANDARD PARTS REFER TO **CATALOG** 967-0413 **KEY NO.** -  
 OPTIONAL GROUPS IN CATALOG ARE LISTED BY GROUP NO. BELOW WHEN USED.

| PART NO.  | QTY. | DESCRIPTION     | PART NO. | QTY. | DESCRIPTION |
|---|------|-----------------|----------|------|-------------|
| Flywheel Alternator (Wico - 20 Ampere)<br>Variable Speed Governor Control<br>(1,200 To 2,500 RPM)<br>Control (Engine) |      |                 |          |      |             |
| 134-2242  | 1    | Housing, Blower |          |      |             |

SPECIAL PARTS LIST FOR **MODEL** DJA-MF **SPEC** 2563T  
FOR STANDARD PARTS REFER TO **CATALOG** 967-0413 **KEY NO.** -  
OPTIONAL GROUPS IN CATALOG ARE LISTED BY GROUP NO. BELOW WHEN USED.

| PART NO. | QTY. | DESCRIPTION  | PART NO. | QTY. | DESCRIPTION |
|----------|------|--|----------|------|-------------|
|          |      | Flywheel Alternator (Wico - 20 Ampere)<br>Clutch (Twin Disc) |          |      |             |
| 134-2241 | 1    | Housing, Blower  |          |      |             |

SPECIAL PARTS LIST FOR **MODEL** DJA-MS **SPEC** 2639T  
FOR STANDARD PARTS REFER TO **CATALOG** 967-0413 **KEY NO.** -  
OPTIONAL GROUPS IN CATALOG ARE LISTED BY GROUP NO. BELOW WHEN USED.

| PART NO.  | QTY. | DESCRIPTION          | PART NO. | QTY. | DESCRIPTION |
|---|------|----------------------|----------|------|-------------|
| Flywheel Alternator (Wico - 20 Ampere)<br>Variable Speed Governor Control<br>(1,200 To 2,500 RPM) |      |                      |          |      |             |
| 140-0645  | 1    | Adapter, Air Cleaner |          |      |             |
| 134-2242  | 1    | Housing, Blower      |          |      |             |

SPECIAL PARTS LIST FOR **MODEL** DJA-MS **SPEC** 2651T  
FOR STANDARD PARTS REFER TO **CATALOG** 967-0413 **KEY NO.** -  
OPTIONAL GROUPS IN CATALOG ARE LISTED BY GROUP NO. BELOW WHEN USED.

| PART NO. | QTY. | DESCRIPTION                            | PART NO. | QTY. | DESCRIPTION |
|----------|------|--|----------|------|-------------|
|          |      | Flywheel Alternator (Wico - 20 Ampere) |          |      |             |
|          |      | Variable Speed Governor Control        |          |      |             |
|          |      | (1,200 To 2,500 RPM)                   |          |      |             |
|          |      | Control (Engine)                       |          |      |             |
|          |      | High Air Temperature Cut Off           |          |      |             |
| 134-2242 | 1    | Housing, Blower                        |          |      |             |



SPECIAL PARTS LIST FOR **MODEL** DJA-MS **SPEC** 2926T  
 FOR STANDARD PARTS REFER TO **CATALOG** 967-0413 **KEY NO.** -  
 OPTIONAL GROUPS IN CATALOG ARE LISTED BY GROUP NO. BELOW WHEN USED.

| PART NO.                               | QTY. | DESCRIPTION         | PART NO. | QTY. | DESCRIPTION |
|--|------|---------------------|----------|------|-------------|
| Flywheel Alternator (Wico - 20 Ampere) |      |                     |          |      |             |
| Variable Speed Governor Control        |      |                     |          |      |             |
| (1,200 To 2,500 RPM)                   |      |                     |          |      |             |
| Control (Engine)                       |      |                     |          |      |             |
| 140-0645                               | 1    | Adapter, Air Blower |          |      |             |
| 134-2242                               | 1    | Housing, Blower     |          |      |             |

SPECIAL PARTS LIST FOR **MODEL** DJA-ME **SPEC** 3364T  
 FOR STANDARD PARTS REFER TO **CATALOG** 967-0413 **KEY NO.** -  
 OPTIONAL GROUPS IN CATALOG ARE LISTED BY GROUP NO. BELOW WHEN USED.

| PART NO. | QTY. | DESCRIPTION                            | PART NO. | QTY. | DESCRIPTION |
|----------|------|--|----------|------|-------------|
|          |      | Flywheel Alternator (Wico - 20 Ampere) |          |      |             |
|          |      | Clutch (Twin Disc)                     |          |      |             |
|          |      | High Air Temperature Cut Off           |          |      |             |
|          |      | Control (Engine)                       |          |      |             |
| 134-2241 | 1    | Housing, Blower                        |          |      |             |

SPECIAL PARTS LIST FOR **MODEL** DJA-KC **SPEC** 3625T  
FOR STANDARD PARTS REFER TO **CATALOG** 967-0413 **KEY NO.** -  
OPTIONAL GROUPS IN CATALOG ARE LISTED BY GROUP NO. BELOW WHEN USED.

| PART NO. | QTY. | DESCRIPTION  | PART NO. | QTY. | DESCRIPTION |
|----------|------|--|----------|------|-------------|
|          |      | Flywheel Alternator (Wico - 20 Ampere)<br>Control (Engine) |          |      |             |
| 134-2241 | 1    | Housing, Blower  |          |      |             |

SPECIAL PARTS LIST FOR **MODEL** DJA-MS **SPEC** 3651T  
FOR STANDARD PARTS REFER TO **CATALOG** 967-0413 **KEY NO.** -  
OPTIONAL GROUPS IN CATALOG ARE LISTED BY GROUP NO. BELOW WHEN USED.

| PART NO. | QTY. | DESCRIPTION                            | PART NO. | QTY. | DESCRIPTION |
|----------|------|--|----------|------|-------------|
|          |      | Flywheel Alternator (wico - 20 Ampere) |          |      |             |
|          |      | High Air Temperature Cut Off           |          |      |             |
| 134-2241 | 1    | Housing, Blower                        |          |      |             |

SPECIAL PARTS LIST FOR **MODEL** DJA-MS **SPEC** 3655T  
 FOR STANDARD PARTS REFER TO **CATALOG** 967-0413 **KEY NO.** -  
 OPTIONAL GROUPS IN CATALOG ARE LISTED BY GROUP NO. BELOW WHEN USED.

| PART NO.                               | QTY. | DESCRIPTION                 | PART NO. | QTY. | DESCRIPTION |
|--|------|-----------------------------|----------|------|-------------|
| Flywheel Alternator (Wico - 20 Ampere) |      |                             |          |      |             |
| Two Speed Governor Control             |      |                             |          |      |             |
| (1,200 To 2,500 RPM)                   |      |                             |          |      |             |
| Control (Engine)                       |      |                             |          |      |             |
| 150-1697                               | 1    | Bracket, Governor Adjusting |          |      |             |
| 150-1702                               | 1    | Bracket, Governor Mounting  |          |      |             |
| 134-2242                               | 1    | Housing, Blower             |          |      |             |

SPECIAL PARTS LIST FOR **MODEL** DJA-KC **SPEC** 3672T  
 FOR STANDARD PARTS REFER TO **CATALOG** 967-0413 **KEY NO.** -  
 OPTIONAL GROUPS IN CATALOG ARE LISTED BY GROUP NO. BELOW WHEN USED.

| PART NO.   | QTY. | DESCRIPTION                                      | PART NO. | QTY. | DESCRIPTION |
|--|------|--|----------|------|-------------|
| NOTE: This Unit Is A Replacement Engine For A<br>3.0DJA-3CR/1V Generator Set |      |  |          |      |             |
| 102-0541   | 1    | Base, Oil  |          |      |             |
| 104-0462   | 1    | Crankshaft                                       |          |      |             |
| 231-0113   | 1    | Adapter, Generator                               |          |      |             |
| 104-0529   | 1    | Flywheel   |          |      |             |
| 154-0725   | 1    | Manifold, Exhaust                                |          |      |             |
| 520-0608   | 2    | Stud, Exhaust Manifold                           |          |      |             |
| 110-0445   | 2    | Nut, Exhaust Stud                                |          |      |             |
| 309-0104   | 1    | Switch, Low Oil Pressure                         |          |      |             |
| 502-0020   | 1    | Elbow, Street - Low Oil<br>Pressure Switch (90°) |          |      |             |
| 166-0316   | 1    | Point Set, Anti-Flicker                          |          |      |             |
| 160-0800   | 1    | Plunger, Breaker                                 |          |      |             |
| 160-0799   | 1    | Guide, Breaker Plunger                           |          |      |             |
| 160-0382   | 1    | Diaphragm, Breaker Plunger                       |          |      |             |
| 509-0091   | 1    | Seal, O-Ring - Breaker<br>Plunger Guide          |          |      |             |

SPECIAL PARTS LIST FOR **MODEL** DJA-MS **SPEC** 3691T  
FOR STANDARD PARTS REFER TO **CATALOG** 967-0413 **KEY NO.** -  
OPTIONAL GROUPS IN CATALOG ARE LISTED BY GROUP NO. BELOW WHEN USED.

| PART NO. | QTY. | DESCRIPTION  | PART NO. | QTY. | DESCRIPTION |
|----------|------|--|----------|------|-------------|
|          |      | Two Speed Governor Control<br>(1,200 To 2,500 RPM)<br>Control (Engine) |          |      |             |
| 134-1358 | 1    | Housing, Blower  |          |      |             |

SPECIAL PARTS LIST FOR **MODEL** DJA-MS **SPEC** 3804T  
 FOR STANDARD PARTS REFER TO **CATALOG** 967-0413 **KEY NO.** -  
 OPTIONAL GROUPS IN CATALOG ARE LISTED BY GROUP NO. BELOW WHEN USED.

| PART NO.   | QTY. | DESCRIPTION                 | PART NO. | QTY. | DESCRIPTION |
|--|------|-----------------------------|----------|------|-------------|
| Flywheel Alternator (Wico - 20 Ampere)<br>Two Speed Governor Control<br>(1,200 To 2,500 RPM)<br>High Air Temperature Cut Off<br>Control (Engine) |      |                             |          |      |             |
| 150-1697   | 1    | Bracket, Governor Adjusting |          |      |             |
| 150-1702   | 1    | Bracket, Governor Mounting  |          |      |             |
| 134-2242   | 1    | Housing, Blower             |          |      |             |



MODEL DJ30 -MFSPEC. 1332B

**SUPPLEMENTARY PARTS LIST 900- 43 (per above model and spec.)**  
Parts listed below apply to the above model. Use these parts in place of ( or in addition to ) the parts listed for Parts Key \_\_\_\_\_ in the standard parts catalog No. 967-0413

| PART NO. | QUAN. | DESCRIPTION  |
|----------|-------|--|
|          |       | NOTE: Charging Alternator, Clutch, and Oil Bath Air Cleaner components are listed in the main parts catalog. |
| 104D462  | 1     | Crankshaft   |
| 123B753  | 1     | Tube, Oil Fill   |
| 134B1215 | 1     | Housing, Blower  |
| 134C1511 | 1     | Housing, Cylinder Air - Rear   |
| 149B665  | 1     | Bracket, Secondary Filter Mtg.   |
| 322P90   | 1     | Jewel Assy., Pilot Light   |
| 322-81   | 1     | Bulb, Pilot Light  |
| 322A92   | 1     | Socket, Pilot Light  |
| 305A144  | 2     | Spacer, Pilot Light  |
| 308A28   | 1     | Switch, Glow Plug  |
| 308P7    | 1     | Switch, Decompression Solenoid   |
| 308A198  | 1     | Switch, Start  |
| 508-31   | 2     | Grommet, Pilot Light   |
| 501A4    | 1     | Line, Fuel Pump to Filter  |
| 501A15   | 1     | Line, Secondary Fuel Filter to Inj. Pump   |
| 502-29   | 1     | Bushing, Secondary Fuel Filter Outlet  |

Dated 2-27-67 Revised \_\_\_\_\_Page 1 of 1