

The following catalog
has gaps in its page
numbers, or doesn't
have any numbers.
We have chosen to
leave the page
numbering in the
order that Acrobat
assigns it.

SPECIAL PARTS LIST FOR MODEL JC-S SPEC 1V
 FOR STANDARD PARTS REFER TO CATALOG 967-0462 KEY NO. C
 OPTIONAL GROUPS IN CATALOG ARE LISTED BY GROUP NO. BELOW WHEN USED.

PART NO.	QTY.	DESCRIPTION	PART NO.	QTY.	DESCRIPTION
----------	------	-------------	----------	------	-------------

Standard Model

Note: This Unit is Equipped With Optional
 Carburetor Air Heater

103-0277	1	Cover Assembly, Gear
150-1199	1	Stud, Governor Adjusting
134-1785	1	Cover, Cylinder Air Housing
502-0065	1	Elbow, Street - Carburetor Fuel Inlet



<http://BestManuals.net>

Best.Manuals@yahoo.com

SPECIAL PARTS LIST FOR MODEL JC-MS SPEC 1V
 FOR STANDARD PARTS REFER TO CATALOG 967-0462 KEY NO. C
 OPTIONAL GROUPS IN CATALOG ARE LISTED BY GROUP NO. BELOW WHEN USED.

PART NO.	QTY.	DESCRIPTION	PART NO.	QTY.	DESCRIPTION
Standard Model					
Note: This Unit Is Equipped With Optional Carburetor Air Heater					
502-0020	1	Elbow, Street - Fuel Pump Inlet			
504-0007	1	Valve, Shut-Off - Fuel Pump Inlet			
306-0195	1	Bracket, Starter Solenoid			
307-1031	1	Solenoid, Starter			
103-0277	1	Cover Assembly, Gear			
150-1199	1	Stud, Governor Adjusting			
150-1110	1	Bracket Assembly, Governor			
134-1785	1	Cover, Cylinder Air Housing			
134-1178	1	Grille, Blower Housing			
517-0108	2	Plug, Blower Housing - Plastic (1-1/16")			
167-0237	4	Plug, Spark			
167-1596	3	Cable, Spark Plug (15")			
167-1595	1	Cable, Spark Plug (25")			
167-1426	1	Cable, Coil To Distributor			
502-0281	2	Connector, Inverted Male - Oil Line To Cylinder Head			

SPECIAL PARTS LIST FOR **MODEL** JC-MS **SPEC** 28S
 FOR STANDARD PARTS REFER TO **CATALOG** 967-0462 **KEY NO.** C
 OPTIONAL GROUPS IN CATALOG ARE LISTED BY GROUP NO. BELOW WHEN USED.

PART NO.	QTY.	DESCRIPTION	PART NO.	QTY.	DESCRIPTION
Variable Speed Governor Control - Two Spring (1,200 To 2,400 RPM)					
Carburetor Air Heater					
191-0365	1	Bracket, Starter Motor Support			
150-1199	1	Stud, Governor Adjusting			
134-1357	1	Housing, Blower			
134-1785	1	Cover, Cylinder Air Housing			
167-1596	3	Cable, Spark Plug (15")			
167-1595	1	Cable, Spark Plug (25")			
167-1426	1	Cable, Coil To Distributor			
312-0058	1	Condenser (.10 Mfd.)			

SPECIAL PARTS LIST FOR **MODEL** JC-MS **SPEC** 28T
 FOR STANDARD PARTS REFER TO **CATALOG** 967-0462 **KEY NO.** C
 OPTIONAL GROUPS IN CATALOG ARE LISTED BY GROUP NO. BELOW WHEN USED.

PART NO.	QTY.	DESCRIPTION	PART NO.	QTY.	DESCRIPTION
Variable Speed Governor Control - Two Spring (1,200 To 2,400 RPM)					
Carburetor Air Heater					
103-0277	1	Cover Assembly, Gear			
150-1199	1	Stud, Governor Adjusting			
134-1785	1	Cover, Cylinder Air Housing			
134-1178	1	Grille, Blower Housing			
517-0108	2	Plug, Blower Housing - Plastic (1-1/16")			
167-1596	3	Cable, Spark Plug (15")			
167-1595	1	Cable, Spark Plug (25")			
167-1426	1	Cable, Coil To Distributor			
191-0365	1	Bracket, Starter Motor Support			
134-1357	1	Housing, Blower			
312-0058	1	Condenser (.10 Mfd.)			

SPECIAL PARTS LIST FOR **MODEL** JB-MS **SPEC** 1918T
FOR STANDARD PARTS REFER TO CATALOG 967-0462 **KEY NO.** B
OPTIONAL GROUPS IN CATALOG ARE LISTED BY GROUP NO. BELOW WHEN USED.

PART NO.	QTY.	DESCRIPTION	PART NO.	QTY.	DESCRIPTION
Variable Speed Governor Control - Two Spring (1,200 To 2,400 RPM)					
Charging Alternator (12 Volt)					
Starter Solenoid					
309-0196	1	Bracket, Starter Solenoid			
191-0918	1	Stator Assembly, Alternator (Refer To Optional Stator Assembly For Components)			
312-0099	1	Capacitor (.10 Mfd.)			
304-0060	1	Resistor, Fixed (1.72 Ohm, 25 Watt)			
304-0292	1	Insulator, Fixed Resistor			
304-0014	2	Washer, Centering - Fixed Resistor			
134-2242	1	Housing, Blower			
134-1178	1	Grille, Blower Housing			
517-0108	1	Plug, Grille - Plastic (1-1/16")			

SPECIAL PARTS LIST FOR **MODEL** JC-MS **SPEC** 1918V
 FOR STANDARD PARTS REFER TO **CATALOG** 967-0462 **KEY NO.** C
 OPTIONAL GROUPS IN CATALOG ARE LISTED BY GROUP NO. BELOW WHEN USED.

PART NO.	QTY.	DESCRIPTION	PART NO.	QTY.	DESCRIPTION
Variable Speed Governor Control - Two Spring (1,200 To 2,400 RPM)					
Carburetor Air Heater					
Charging Alternator (12 Volt)					
502-0020	1	Elbow, Street - Fuel Pump Inlet			
504-0007	1	Valve, Shut-Off - Fuel Pump Inlet			
306-0195	1	Bracket, Starter Solenoid			
307-1031	1	Solenoid, Starter			
150-1199	1	Stud, Governor Adjusting			
134-1785	1	Cover, Cylinder Air Housing			
134-1178	1	Grille, Blower Housing			
517-0108	2	Plug, Blower Housing - Plastic (1-1/16")			
167-1596	3	Cable, Spark Plug (15")			
167-1595	1	Cable, Spark Plug (25")			
167-1426	1	Cable, Coil To Distributor			
134-2253	1	Housing, Blower			

SPECIAL PARTS LIST FOR **MODEL** JC-MS **SPEC** 1971V
 FOR STANDARD PARTS REFER TO **CATALOG** 967-0462 **KEY NO.** C
 OPTIONAL GROUPS IN CATALOG ARE LISTED BY GROUP NO. BELOW WHEN USED.

PART NO.	QTY.	DESCRIPTION	PART NO.	QTY.	DESCRIPTION
Variable Speed Governor Control - Two Spring (1,200 To 2,400 RPM)					
Carburetor Air Heater					
Charging Alternator (12 Volt)					
502-0020	1	Elbow, Street - Fuel Pump Inlet			
504-0007	1	Valve, Shut-Off - Fuel Pump Inlet			
306-0195	1	Bracket, Starter Solenoid			
307-0367	1	Solenoid, Starter			
150-1199	1	Stud, Governor Adjusting			
134-1785	1	Cover, Cylinder Air Housing			
134-1178	1	Grille, Blower Housing			
517-0108	2	Plug, Blower Housing - Plastic (1-1/16")			
167-1596	3	Cable, Spark Plug (15")			
167-1595	1	Cable, Spark Plug (25")			
167-1426	1	Cable, Coil To Distributor			
134-2253	1	Housing, Blower			

MODEL JCM-MF SPEC. 2073S

SUPPLEMENTARY PARTS LIST 900- 43 (per above model and spec.)

Parts listed below apply to the above model. Use these parts in place of (or in addition to) the parts listed for Parts Key JC-MF

Quantity Used Column C in the standard Parts Catalog No. 967-462

PART NO.	QUAN.	DESCRIPTION
		Rockford Clutch Group, Variable Speed (2 Spring) Governor, Air Discharge Shutter Assy. and Carburetor Air Heater Kit are optional parts covered in main parts catalog.
161D246	1	Magneto - For ordering parts for the magneto refer to the Fairbanks Morse Parts List at the end of this supplement and order from Fairbanks Morse. Fairbanks Morse Part No. is FMXZE4869A.
110A1888	1	Block Assy., Cylinder - Includes Bearings
102B676	1	Base, Oil
102B558	1	Heater, Oil Base
509-112	1	Seal, Oil - Crankshaft Rear
112A104	4	Piston and Pin - Includes Retaining Rings
112A68	8	Ring, Retaining Pin
114C182	4	Rod Assy., Connecting
114A91	4	Bushing, Piston Pin, Connecting Rod
114A181	8	Bearing Half, Connecting Rod
122B193	1	Filter, Oil
505-8	1	Plug - Slotted Head, Oil Filter Adapter
502-97	1	Connector - Oil Filter Adapter Tee to Cylinder Head Oil Line
502-58	1	Tee - Oil Filter Adapter to LOPKO Switch
502-20	1	Elbow - Oil Filter Adapter Tee to LOPKO Switch
309A169	1	Switch, Low Oil Pressure Cut-Off
505-7	1	Bushing - Reducer - Oil Pressure Gauge to Adapter Elbow
502-54	1	Elbow - Oil Filter Adapter to Oil Pressure Gauge Bushing
191A443	1	Motor, Start (For Component parts contact your nearest Prestolite dealer giving the Prestolite number of starter motor.)
103C370	1	Cover Assy., Gear - Complete
509B111	1	Seal, Oil - Gear Cover
150A921	1	Spring, Governor Control
167-199	4	Plug, Spark
167B1432	2	Cable, Spark Plug - Short
167B1433	2	Cable, Spark Plug - Long
134C1357	1	Housing, Blower
134B1499	1	Pan, Cylinder Air Housing (Bottom)
309A206	1	Switch, High Air Temperature

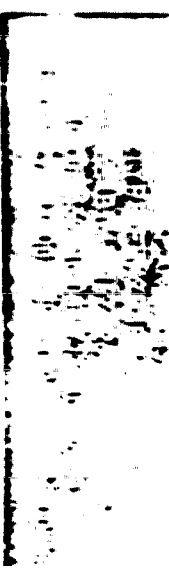
MODEL JCM-MF SPEC. 2073S

SUPPLEMENTARY PARTS LIST 900- 43 (per above model and spec.)

Parts listed below apply to the above model. Use these parts in place of (or in addition to) the parts listed for Parts Key JC-MF

Quantity Used Column C in the standard Parts Catalog No. 967-462

PART NO.	QUAN.	DESCRIPTION
309A195	1	Bracket, High Air Temperature Switch
508A126	2	Washer, High Air Temperature Switch Insulating
508A127	1	Bushing, High Air Temperature Switch Insulating
332A876	1	Terminal, High Air Temperature Switch
155B824	1	Muffler
505-220	1	Nipple, Muffler
193B107	1	Gauge, Oil Pressure
193P189	1	Resistor, Oil Pressure Gauge
193A108	1	Sender, Oil Pressure
308-198	1	Switch, Start
308-5	1	Switch, Low Oil Pressure Cut-Off Selector
152P183	1	Throttle Assy., Manual



DATA		FM KZE4B 10U	FM KZE4B 10Z	FM KZE4B 10S	FM KZE4B 10L	FM KZE4B 10B	FM KZE4B 10A	FM KZE4B 69A	MAGNETO PART NUMBER
Engine Manufacturer and Specification Number									
10-001-120	1081-D								End cap screw, 10-24 x 1-1/2"
10-011-149	MA1490C								End cap
10-004-176	NX2436A								End cap
10-000-172	6S-D								Condenser screw, 6-32 x 1/8
10-000-044	EX2436								Condenser
10-000-196	MS-430								Condenser
10-013-464	F2649								Condenser roll pin
10-011-679	P4475								O-ring seal
10-000-494	10812D								End cap screw, 10-24 x 3/4
10-000-700	6S-N								Switch screw, 6-32 x 1/2
10-000-660	6S-N								Switch screw, 6-32 x 7/16
10-112-437	G2457A								Switch bushing
10-010-042	G2457AX								Switch bushing
10-112-437	H2457AX								Switch bushing
10-000-058	K2457								Contact strip
10-042-438	D2457								Switch screw washer, #6
10-000-340	6N1								Screw nut
10-000-768	6LW1								Screw lockwasher
10-021-310	B1355								Strip guide
10-010-041	B1355X								Strip guide
10-004-240	G2499A								Wire assembly
10-004-258	K2499A								Wire assembly
10-001-131	J2457								Contact strip
10-001-460	T2457								Primary ground to contact su
10-004-258	Y2457								Condenser contact
10-052-514	H2514								Primary ground to contact su
10-004-599	Z2514								Primary ground to contact su
10-172-430	S2436A								End cap
10-000-029	CX2436								Condenser
10-001-467	A2744A								Ground bushing
10-000-713	KX2436A								End cap
10-013-467	TY2436A								End cap
10-532-430	F2436A								End cap
10-010-001	A799X								Guide block
10-310-800	A800A								End cap cover
10-013-250	A800M								End cap cover
10-000-896	6S-D								Cover screw, 6-32 x 1/2
10-000-889	6S-D								Cover screw, 6-32 x 3/8
10-050-682	B6-2A								End cap cover gasket
10-004-089	H2474E								Distributor block
10-011-680	K2474E								Distributor block
10-010-044	H2474EX								Distributor block
10-102-498	K2498								End cap gasket
10-011-681	L2474E								Distributor block
10-010-104	G2474EX								Distributor block
10-000-190	F9-3B								Lead rod
10-052-100	H2460B								Brush and spring
10-010-748	X2765								Distributor rotor
10-010-749	X2765X								Distributor rotor
10-000-670	A2766								Rotor spring clip

(Continued on Page 5)

Ref No	Part Number	Part Number	1U	1Z	2	5	4	6A	Description
(Continued from Page 4)									
51	10 115 169	Q5939						1	Shaft and gear
52	10 010 084	Q5939X						-	Shaft and gear
53	10 005 950	D7450C						1	Distributor bearing
54	10 000 668	8S6G						4	Support screw, 8-32 x 3/8
55	10 003 714	UX4631						-	Bearing support
56	10 013 462	NY4631						1	Bearing support
57	10 071 498	G1498						1	Shaft snap ring
58	10 592 481	TS2480						1	Rotor
59	10 432 180	HT2480						-	Rotor
60	10 000 379	3K1						1	Key
61	10 101 498	B1498B						1	Bearing snap ring
62	10 131 498	B1498D						1	Shaft snap ring
63	10 105 949	C5949						1	Drive end bearing
64	10 112 492	A2492C						1	Grease retaining washer - inner
65	10 145 949	D5949A						1	Cam end bearing
66	10 010 845	E2493						1	Grease retaining washer - outer
67	10 010 215	SNY2433						-	Condenser
68	10 013 062	8S5NA						-	Condenser screw, 8-32 x 5/16
69	10 412 437	A2437A						1	Point set
70	10 010 570	A2437AX						-	Point set
71	10 072 788	G2788						1	Cam wick
72	10 025 969	B5969						1	Support screw washer, #8
73	10 001 930	8S6U						1	Support screw, 8-32 x 3/8
74	10 011 694	6S6Z						1	Terminal screw, 6-32 x 3/8
75	10 092 513	D2513A						1	Ground spring
76	10 042 458	D2458						1	Support screw washer, #6
77	10 004 028	6S6U						1	Support screw, 6-32 x 3/8
78	10 011 884	C1498G						1	Fulcrum pin snap ring
79	10 010 360	Q5932						1	Rotor gear
80	10 041 498	D1498						1	Gear snap ring
81	10 000 890	8S5D						4	Block screw, 8-32 x 1/2
82	10 000 662	6S6N						2	Cover screw, 6-32 x 3/8
83	10 011 232	A1232						2	Vent cover - end cap
84	10 036 032	A6032A						2	Vent screen - end cap
85	10 021 077	B1077						2	Switch ferrule
86	10 010 039	A6018X						-	Insulating washer
87	10 013 969	A3969						-	Switch terminal
88	10 010 043	A1166X						-	Switch insulator
89	10 022 735	A2735A						-	Switch nut
90	10 302 514	FX2514C						-	Switch complete
91	10 001 196	S2514						-	Primary ground to contact support
92	10 001 115	C2513A						-	Ground spring
93	10 901 210	C4373						-	Ground bushing
94	10 201 498	V1498						-	Switch snap ring
95	10 013 059	GW2514						1	Nut and plunger assembly
96	10 013 060	HW2514						-	Nut and plunger assembly
97	10 011 548	E2513A						1	Ground spring
98	10 011 359	F4373						1	Ground bushing
99	10 001 818	6S4U						-	Clip screw, 6-32 x 1/4
100	10 001 742	B6120						-	Coil clip
101	10 362 477	R2477C						-	Coil
102	10 003 533	RS2477C						1	Coil
103	10 013 466	HT2425						1	Housing
104	10 003 541	QW2425						-	Housing
105	10 003 848	WW2425						-	Housing
106	10 003 541	XW2425						-	Housing
107	10 003 539	TZ2425						-	Housing

(Continued on Page 6)

Ref No.	Part Number	Part Number	1/2 in. x 1/4 in.	1/2 in. x 1/4 in.	1/2 in. x 1/4 in.	1/2 in. x 1/4 in.	1/2 in. x 1/4 in.	1/2 in. x 1/4 in.	1/2 in. x 1/4 in.	1/2 in. x 1/4 in.	Description
(Continued from Page 5)											
108	10 010 938	318811A								2	Coil setscrew, 5/16-24 x 7/8
109	10 010 195	A195								-	Name plate
110	10 011 867	D195								-	Name plate
111	10 011 783	K195								-	Name plate
112	10 011 870	M195								1	Name plate
113	10 011 881	S195								-	Name plate
114	10 001 818	GS1U								2	Cover screw, 6-32 x 1/4
115	10 004 099	B6030A								2	Vent cover - housing
116	10 003 564	CG032B								2	Vent screen - housing
117	10 172 568	S2568								1	Pawl stop pin
118	10 112 492	A2492C								1	Seal inner washer
119	10 073 861	G3861								1	Shaft seal
120	10 012 492	A2492A								1	Seal outer washer
121	10 172 562	S2563C								-	Coupling complete
122	10 372 558	BS2563C								1	Coupling complete
123	10 382 560	PU2563C								-	Coupling complete
124	15 512 562	BW2563C								-	Coupling complete
125	10 322 564	YW2563C								-	Coupling complete
126	15 652 564	BZ2563C								-	Coupling complete
127	10 013 586	A1498J								1	Pawl lock spring
128	10 001 360	Q2566								2	Coupling pawl
129	10 013 242	S3963								-	Pawl spring
130	10 013 343	T3963								2	Pawl spring
131	10 152 563	Q2563								-	Hub assembly
132	10 172 563	S2563								1	Hub assembly
133	10 042 565	D2565								-	Coupling spring
134	10 052 565	E2565								1	Coupling spring
135	10 135 957	N5957								-	Coupling shell
136	10 235 957	Y5957								-	Coupling shell
137	10 295 957	EX5957								-	Coupling shell
138	15 625 957	QY5957								-	Coupling shell
139	10 013 463	TZ5957								1	Coupling shell
140	10 012 572	F2572								1	Gear bushing
141	10 122 570	M2570								1	Coupling nut
142	10 011 781	B5931B								-	Coupling nut washer
143	10 011 740	U2570								-	Coupling nut

Parts with numbers ending in "X" are fungus treated.

SPECIAL PARTS LIST FOR MODEL JC-MF SPEC 2175V
 FOR STANDARD PARTS REFER TO CATALOG 967-0462 KEY NO. C
 OPTIONAL GROUPS IN CATALOG ARE LISTED BY GROUP NO. BELOW WHEN USED.

PART NO.	QTY.	DESCRIPTION	PART NO.	QTY.	DESCRIPTION
Gas-Gasoline Fuel System					
Low Oil Pressure Cut Off:					
Thermo-Magnetic Choke					
104-0460	1	Crankshaft			
190-0251	1	Housing, Clutch			
190-0253	1	Flange, Adapter - Clutch			
190-0254	1	Washer, Flat - Adapter Flange			
502-0020	1	Elbow, Street - Fuel Pump Inlet			
504-0007	1	Valve, Shut-Off - Fuel Pump Inlet			
306-0195	1	Bracket, Starter Solenoid			
307-1031	1	Solenoid, Starter			
103-0277	1	Cover Assembly, Gear			
150-1199	1	Stud, Governor Adjusting			
150-1110	1	Bracket Assembly, Governor			
160-1224	1	Plate, Centrifugal Switch			
309-0134	1	Switch, Centrifugal			
309-0140	1	Plunger, Centrifugal Switch			
160-0382	1	Diaphragm, Centrifugal Switch			
160-0720	1	Spacer, Control - Centrifugal Switch			
160-0721	1	Gasket, Switch Plate			
160-0727	1	Control Assembly, Centrifugal Switch (Includes Weight Springs)			
160-0711	2	Spring, Weight - Centrifugal Switch Control			
160-0806	1	Disc, Thrust Plunger - Centrifugal Switch			
160-0774	1	Plunger, Control - Centrifugal Switch			
160-0773	1	Spring, Plunger - Centrifugal Switch Control			
338-0261	1	Harness, Wiring - Coil To Centrifugal Switch			
312-0058	1	Condenser (.1 Mfd.)			
134-1910	1	Cover, Cylinder Air Housing			
134-1178	1	Grille, Blower Housing			
517-0108	2	Plug, Blower Housing - Plastic (1-1/16")			
167-0237	4	Plug, Spark			
167-1596	3	Cable, Spark Plug (15")			
167-1595	1	Cable, Spark Plug (25")			
167-1426	1	Cable, Coil To Distributor			
331-0088	1	Bushing, Housing - Gas Fuel Line			

SPECIAL PARTS LIST FOR MODEL JCM-MS SPEC 2294V
 FOR STANDARD PARTS REFER TO CATALOG 967-0462 KEY NO. C
 OPTIONAL GROUPS IN CATALOG ARE LISTED BY GROUP NO. BELOW WHEN USED.

PART NO.	QTY.	DESCRIPTION	PART NO.	QTY.	DESCRIPTION
Air Discharge Shutter			191-0713	1	#Armature
Variable Speed Governor Control - Two Spring (1,200 To 2,400 RPM)			191-0432	1	#Clutch
High Air Temperature Cut Off			191-1023	1	#Head Assembly, Commutator End
Low Oil Pressure Cut Off			191-1043	1	#Coil Package, Field
110-1888	1	Block Assembly, Cylinder (Refer To Standard Cylinder Block For Components, Except Rear Bearing Plate)	191-1042	1	#Plate Assembly, Brush
101-0376	1	Plate, Bearing - Rear	191-1020	1	#Spring Set, Brush (Set Of 4)
509-0112	1	Seal, Oil - Rear Bearing Plate	191-1026	1	#Connector Package
104-0460	1	Crankshaft	191-0497	1	#Bearing, Drive End
114-0182	4	Rod Assembly, Connecting (Includes Piston Pin Bushing)	191-1027	1	#Spring, Plunger
114-0091	4	Bushing, Piston Pin	191-1028	1	#Core Assembly, Moving
112-0104	4	Piston And Pin (Includes Retaining Rings)	191-0715	1	#Switch, Solenoid
112-0067	4	Pin, Piston	191-1029	1	#Yoke Package
112-0068	8	Ring, Retaining - Piston Pin	191-1030	1	#Stop And Lock Ring Package Pinion
102-0676	1	Base, Oil	191-1031	1	#Thrust Washer Package, Armature
103-0370	1	Cover Assembly, Gear (Refer To Standard Gear Cover For Components, Except Parts Marked *)	191-0714	1	#Brush Set
509-0111	1	*Seal, Oil - Crankshaft	191-1032	1	#Yoke
502-0281	2	Connector, Inverted Male - Oil Line To Cylinder Head	309-0206	1	Switch, High Air Temperat
122-0193	1	Filter, Oil	150-1199	1	Stud, Governor Adjusting
149-0638	1	Plate, Fuel Pump Hole	134-1357	1	Housing, Blower
502-0423	1	Elbow, Compression - Carburetor Fuel Inlet (90°)	134-1499	1	Pan, Cylinder Air Housing Bottom
167-0199	4	Plug, Spark	134-1794	1	Cover, Cylinder Air Housi
167-1432	2	Cable, Spark Plug (Short)	517-0108	2	Plug, Blower Housing - Plastic (1-1/16")
167-1433	2	Cable, Spark Plug (Long)	134-1178	1	Grille, Blower Housing
308-0198	1	Switch, Start	134-1508	1	Panel, Start Switch
161-0246	1	Magneto, Ignition (Fairbanks Morse), (Refer To Model JCM-MF/2073S Special List For Component Parts)			
160-0674	1	Gear, Magneto Drive			
191-0443	1	Motor, Starting (Includes Parts Marked #)			

SPECIAL PARTS LIST FOR MODEL JC-MS SPEC 2305V
 FOR STANDARD PARTS REFER TO CATALOG 967-0462 KEY NO. C
 OPTIONAL GROUPS IN CATALOG ARE LISTED BY GROUP NO. BELOW WHEN USED.

PART NO.	QTY.	DESCRIPTION	PART NO.	QTY.	DESCRIPTION
Gas Fuel System					
Charging Alternator (12 Volt)					
502-0281	2	Connector, Inverted Male - Oil Line To Cylinder Head			
306-0195	1	Bracket, Starter Solenoid			
307-1031	1	Solenoid, Starter			
150-1199	1	Stud, Governor Adjusting			
150-1110	1	Bracket Assembly, Governor			
134-1910	1	Cover, Cylinder Air Housing			
134-1178	1	Grille, Blower Housing			
517-0108	2	Plug, Blower Housing - Plastic (1-1/16")			
167-1596	3	Cable, Spark Plug (15")			
167-1595	1	Cable, Spark Plug (25")			
167-1426	1	Cable, Coil To Distributor			
134-2255	1	Housing, Blower			
503-0446	1	Clamp, Hose - Fuel			
331-0103	1	Bushing, Snap - Fuel Hose (1")			

SPECIAL PARTS LIST FOR **MODEL** JC-MS **SPEC** 2328S
 FOR STANDARD PARTS REFER TO **CATALOG** 967-0462 **KEY NO.** C
 OPTIONAL GROUPS IN CATALOG ARE LISTED BY GROUP NO. BELOW WHEN USED.

PART NO.	QTY.	DESCRIPTION	PART NO.	QTY.	DESCRIPTION
Variable Speed Governor Control - Two Spring (1,200 To 2,400 RPM) Charging Alternator (12 Volt) Air Outlet Duct Carburetor Air Heater					
502-0020	1	Elbow, Street - Fuel Pump Inlet			
504-0007	1	Valve, Shut-Off - Fuel Pump Inlet			
306-0195	1	Bracket, Starter Solenoid			
307-0367	1	Solenoid, Starter			
150-1199	1	Stud, Governor Adjusting			
134-1785	1	Cover, Cylinder Air Housing			
134-1178	1	Grille, Blower Housing			
517-0108	2	Plug, Blower Housing - Plastic (1-1/16")			
167-1596	3	Cable, Spark Plug (15")			
167-1595	1	Cable, Spark Plug (25")			
167-1426	1	Cable, Coil To Distributor			
322-0090	1	Fixture, Lamp (Red)			
322-0092	1	Socket, Lamp			
322-0081	1	Lamp, Pilot			
305-0144	2	Spacer, Panel - Brass (1/4")			
508-0031	2	Grommet, Rubber - Control Panel (11/32" Hole)			
308-0007	1	Switch, Ignition			
308-0198	1	Switch, Start			
134-1371	1	Housing, Blower			



BestManuals.net

The ABSOLUTE BestManuals on the web

SPECIAL PARTS LIST FOR MODEL JC-MF SPEC 2389W
 FOR STANDARD PARTS REFER TO CATALOG 967-0462 KEY NO. C
 OPTIONAL GROUPS IN CATALOG ARE LISTED BY GROUP NO. BELOW WHEN USED.

PART NO.	QTY.	DESCRIPTION	PART NO.	QTY.	DESCRIPTION
Gas Fuel System					
High Air Temperature Cut Off					
Solenoid Shift Starter					
Charging Alternator (12 Volt)					
102-0482	1	Base, Oil			
104-0460	1	Crankshaft			
309-0177	1	Switch, Low Oil Pressure			
190-0251	1	Housing, Clutch			
190-0253	1	Flange, Adapter - Clutch			
190-0254	1	Washer, Flat - Adapter Flange			
150-1199	1	Stud, Governor Adjusting			
150-1110	1	Bracket Assembly, Governor			
134-1785	1	Cover, Cylinder Air Housing			
134-1178	1	Grille, Blower Housing			
517-0108	2	Plug, Blower Housing - Plastic (1-1/16")			
167-1596	3	Cable, Spark Plug (15")			
167-1595	1	Cable, Spark Plug (25")			
167-1426	1	Cable, Coil To Distributor			
134-2255	1	Housing, Blower			
134-2256	1	Housing, Cylinder Air - Rear			
308-0007	1	Switch, Ignition			
308-0198	1	Switch, Start			
332-0592	1	Jumper, Terminal - Start Switch			

SPECIAL PARTS LIST FOR MODEL JC-MS SPEC 2422V
 FOR STANDARD PARTS REFER TO CATALOG 967-0462 KEY NO. C
 OPTIONAL GROUPS IN CATALOG ARE LISTED BY GROUP NO. BELOW WHEN USED.

PART NO.	QTY.	DESCRIPTION	PART NO.	QTY.	DESCRIPTION
Charging Alternator (12 Volt)					
Carburetor Air Heater					
502-0020	1	Elbow, Street - Fuel Pump Inlet			
504-0007	1	Valve, Shut-Off - Fuel Pump Inlet			
306-0195	1	Bracket, Starter Solenoid			
307-1031	1	Solenoid, Starter			
150-1199	1	Stud, Governor Adjusting			
150-1110	1	Bracket Assembly, Governor			
134-1785	1	Cover, Cylinder Air Housing			
134-1178	1	Grille, Blower Housing			
517-0108	2	Plug, Blower Housing - Plastic (1-1/16")			
167-1596	3	Cable, Spark Plug (15")			
167-1595	1	Cable, Spark Plug (25")			
167-1426	1	Cable, Coil To Distributor			
134-2255	1	Housing, Blower			
134-2256	1	Housing, Cylinder Air - Rear			
308-0007	1	Switch, Ignition			
308-0198	1	Switch, Start			
332-1043	1	Jumper, Terminal - Start Switch			
517-0021	1	Plug, Dot Button - Housing (7/8" Hole)			
517-0045	2	Plug, Dot Button - Housing (9/32" Hole)			

SPECIAL PARTS LIST FOR MODEL JC-MS SPEC 2423V
 FOR STANDARD PARTS REFER TO CATALOG 967-0462 KEY NO. C
 OPTIONAL GROUPS IN CATALOG ARE LISTED BY GROUP NO. BELOW WHEN USED.

PART NO.	QTY.	DESCRIPTION	PART NO.	QTY.	DESCRIPTION
High Air Temperature Cut Off					
Charging Alternator (12 Volt)					
Carburetor Air Heater					
502-0020	1	Elbow, Street - Fuel Pump Inlet			
504-0007	1	Valve, Shut-Off - Fuel Pump Inlet			
306-0195	1	Bracket, Starter Solenoid			
307-1031	1	Solenoid, Starter			
150-1199	1	Stud, Governor Adjusting			
150-1110	1	Bracket Assembly, Governor			
134-1785	1	Cover, Cylinder Air Housing			
134-1178	1	Grille, Blower Housing			
517-0108	2	Plug, Blower Housing - Plastic (1-1/16")			
167-1596	3	Cable, Spark Plug (15")			
167-1595	1	Cable, Spark Plug (25")			
167-1426	1	Cable, Coil To Distributor			
134-2255	1	Housing, Blower			
134-2256	1	Housing, Cylinder Air - Rear			
308-0007	1	Switch, Ignition			
308-0198	1	Switch, Start			
332-1043	1	Jumper, Terminal - Start Switch			
517-0021	1	Plug, Dot Button - Housing (7/8" Hole)			
517-0045	1	Plug, Dot Button - Housing (9/32" Hole)			
309-0177	1	Switch, Low Oil Pressure			

SPECIAL PARTS LIST FOR MODEL JC-MF SPEC 2431V
 FOR STANDARD PARTS REFER TO CATALOG 967-0462 KEY NO. C
 OPTIONAL GROUPS IN CATALOG ARE LISTED BY GROUP NO. BELOW WHEN USED.

PART NO.	QTY.	DESCRIPTION	PART NO.	QTY.	DESCRIPTION
Gas-Gasoline Fuel System					
Thermo-Magnetic Choke					
Charging Alternator					
104-0460	1	Crankshaft			
309-0177	1	Switch, Low Oil Pressure			
191-0918	1	Stator Assembly (Refer To Optional Stator Assembly For Components)			
190-0251	1	Housing, Clutch			
190-0252	1	Flange, Adapter - Clutch			
190-0254	1	Washer, Flat - Adapter Flange			
502-0020	1	Elbow, Street - Fuel Pump Inlet			
504-0007	1	Valve, Shut-Off - Fuel Pump Inlet			
306-0195	1	Bracket, Starter Solenoid			
307-1031	1	Solenoid, Starter			
150-1199	1	Stud, Governor Adjusting			
150-1110	1	Bracket Assembly, Governor			
134-1785	1	Cover, Cylinder Air Housing			
134-1178	1	Grille, Blower Housing			
517-0108	2	Plug, Blower Housing - Plastic (1-1/16")			
167-1596	3	Cable, Spark Plug (15")			
167-1595	1	Cable, Spark Plug (25")			
167-1426	1	Cable, Coil To Distributor			
134-2255	1	Housing, Blower			
134-2256	1	Housing, Cylinder Air - Rear			
308-0007	1	Switch, Ignition			
308-0198	1	Switch, Start			
332-1043	1	Jumper, Terminal - Start Switch			
517-0021	1	Plug, Dot Button - Housing (7/8" Hole)			
517-0045	1	Plug, Dot Button - Housing (9/32" Hole)			

SPECIAL PARTS LIST FOR **MODEL** JC-MS **SPEC** 2450V
 FOR STANDARD PARTS REFER TO **CATALOG** 967-0462 **KEY NO.** C
 OPTIONAL GROUPS IN CATALOG ARE LISTED BY GROUP NO. BELOW WHEN USED.

PART NO.	QTY.	DESCRIPTION	PART NO.	QTY.	DESCRIPTION
Variable Speed Governor Control - Two Spring (1,200 To 2,500 RPM) Charging Alternator (12 Volt) Carburetor Air Heater					
502-0020	1	Elbow, Street - Fuel Pump Inlet			
504-0007	1	Valve, Shut-Off - Fuel Pump Inlet			
306-0195	1	Bracket, Starter Solenoid			
307-1031	1	Solenoid, Starter			
150-1199	1	Stud, Governor Adjusting			
150-1110	1	Bracket Assembly, Governor			
134-1785	1	Cover, Cylinder Air Housing			
134-1178	1	Grille, Blower Housing			
517-0108	2	Plug, Blower Housing - Plastic (1-1/16")			
167-1596	3	Cable, Spark Plug (15")			
167-1595	1	Cable, Spark Plug (25")			
167-1426	1	Cable, Coil To Distributor			
134-2253	1	Housing, Blower			
134-2256	1	Housing, Cylinder Air - Rear			
308-0007	1	Switch, Ignition			
308-0198	1	Switch, Start			
332-1043	1	Jumper, Terminal - Start Switch			
517-0021	1	Plug, Dot Button - Housing (7/8" Hole)			
517-0045	2	Plug, Dot Button - Housing (9/32" Hole)			



SPECIAL PARTS LIST FOR MODEL JC-MF SPEC 2518V
 FOR STANDARD PARTS REFER TO CATALOG 967-0462 KEY NO. C
 OPTIONAL GROUPS IN CATALOG ARE LISTED BY GROUP NO. BELOW WHEN USED.

PART NO.	QTY.	DESCRIPTION	PART NO.	QTY.	DESCRIPTION
Variable Speed Governor Control - Two Spring (1,200 To 2,400 RPM)					
Twin Disc Clutch					
Charging Alternator (12 Volt)					
Carburetor Air Heater					
502-0020	1	Elbow, Street - Fuel Pump Inlet			
504-0007	1	Valve, Shut-Off - Fuel Pump Inlet			
306-0195	1	Bracket, Starter Solenoid			
307-1031	1	Solenoid, Starter			
150-1199	1	Stud, Governor Adjusting			
134-1785	1	Cover, Cylinder Air Housing			
134-1178	1	Grille, Blower Housing			
517-0108	2	Plug, Blower Housing - Plastic (1-1/16")			
167-1596	3	Cable, Spark Plug (15")			
167-1595	1	Cable, Spark Plug (25")			
167-1426	1	Cable, Coil To Distributor			
134-2253	1	Housing, Blower			
110-0879	8	Screw, Cap - Clutch Mounting			

SPECIAL PARTS LIST FOR MODEL JB-MS SPEC 2587T
 FOR STANDARD PARTS REFER TO CATALOG 967-0462 KEY NO. B
 OPTIONAL GROUPS IN CATALOG ARE LISTED BY GROUP NO. BELOW WHEN USED.

PART NO.	QTY.	DESCRIPTION	PART NO.	QTY.	DESCRIPTION
Variable Speed Governor Control - Two Spring (1,200 To 2,400 RPM) Charging Alternator (12 Volt) Starter Solenoid Low Oil Pressure Cut Off					
306-0196	1	Bracket, Starter Solenoid			
191-0918	1	Stator Assembly, Alternator (Refer To Optional Stator Assembly For Components)			
312-0099	1	Capacitor (.10 Mfd.)			
304-0060	1	Resistor, Fixed (1.72 Ohm, 25 Watt)			
304-0292	1	Insulator, Fixed Resistor			
304-0014	2	Washer, Centering - Fixed Resistor			
134-2242	1	Housing, Blower			
134-1178	1	Grille, Blower Housing			
517-0108	1	Plug, Grille - Plastic (1-1/16")			
134-2256	1	Housing, Cylinder Air - Rear			
308-0007	1	Switch, Toggle - Ignition			
308-0198	1	Switch, Start			
332-0592	1	Jumper, Start Switch			

SPECIAL PARTS LIST FOR **MODEL** JC-MS **SPEC** 2587V
 FOR STANDARD PARTS REFER TO **CATALOG** 967-0462 **KEY NO.** C
 OPTIONAL GROUPS IN CATALOG ARE LISTED BY GROUP NO. BELOW WHEN USED.

PART NO.	QTY.	DESCRIPTION	PART NO.	QTY.	DESCRIPTION
Variable Speed Governor Control - Two Spring (1,200 To 2,500 RPM)					
Charging Alternator (12 Volt)					
Carburetor Air Heater					
502-0020	1	Elbow, Street - Fuel Pump Inlet			
504-0007	1	Valve, Shut-Off - Fuel Pump Inlet			
306-0195	1	Bracket, Starter Solenoid			
307-0367	1	Solenoid, Starter			
150-1199	1	Stud, Governor Adjusting			
134-1785	1	Cover, Cylinder Air Housing			
134-1178	1	Grille, Blower Housing			
517-0108	2	Plug, Blower Housing - Plastic (1-1/16")			
167-1596	3	Cable, Spark Plug (15")			
167-1595	1	Cable, Spark Plug (25")			
167-1426	1	Cable, Coil To Distributor			
134-2253	1	Housing, Blower			
134-2256	1	Housing, Cylinder Air - Rear			
308-0007	1	Switch, Ignition			
308-0198	1	Switch, Start			
332-1043	1	Jumper, Terminal - Start Switch			
517-0021	1	Plug, Dot Button - Housing (7/8" Hole)			
517-0045	1	Plug, Dot Button - Housing (9/32" Hole)			
309-0177	1	Switch, Low Oil Pressure			

SPECIAL PARTS LIST FOR **MODEL** JC-MF **SPEC** 2604V
 FOR STANDARD PARTS REFER TO **CATALOG** 967-0462 **KEY NO.** C
 OPTIONAL GROUPS IN CATALOG ARE LISTED BY GROUP NO. BELOW WHEN USED.

PART NO.	QTY.	DESCRIPTION	PART NO.	QTY.	DESCRIPTION
Gas Fuel System					
Variable Speed Governor Control - Two Spring (1,200 To 2,400 RPM)					
Twin Disc Clutch					
Charging Alternator (12 Volt)					
110-0879	8	Screw, Cap - Clutch Mounting			
306-0195	1	Bracket, Starter Solenoid			
307-0367	1	Solenoid, Starter			
150-1199	1	Stud, Governor Adjusting			
134-1785	1	Cover, Cylinder Air Housing			
134-1178	1	Grille, Blower Housing			
517-0108	2	Plug, Blower Housing - Plastic (1-1/16")			
167-1596	3	Cable, Spark Plug (15")			
167-1595	1	Cable, Spark Plug (25")			
167-1426	1	Cable, Coil To Distributor			
134-2253	1	Housing, Blower			
134-2256	1	Housing, Cylinder Air - Rear			
308-0007	1	Switch, Ignition			
308-0198	1	Switch, Start			

SPECIAL PARTS LIST FOR **MODEL** JB-MS **SPEC** 2622T
 FOR STANDARD PARTS REFER TO **CATALOG** 967-0462 **KEY NO.** B
 OPTIONAL GROUPS IN CATALOG ARE LISTED BY GROUP NO. BELOW WHEN USED.

PART NO.	QTY.	DESCRIPTION	PART NO.	QTY.	DESCRIPTION
High Air Temperature Cut Off					
Thermo-Magnetic Choke					
Air Outlet Duct					
Low Oil Pressure Cut Off					
Charging Alternator (12 Volt)					
120-0623	1	Line, Oil Filter Adapter To Cylinder Head			
191-0877	1	Stator Assembly, Alternator (Refer To Optional Stator Assembly For Components)			
312-0099	1	Capacitor (.10 Mfd.)			
304-0060	1	Resistor, Fixed (1.72 Ohm, 25 Watt)			
304-0292	1	Insulator, Fixed Resistor			
304-0014	2	Washer, Centering - Fixed Resistor			
134-2241	1	Housing, Blower			
134-1178	1	Grille, Blower Housing			
517-0108	1	Plug, Grille - Plastic (1-1/16")			
150-1107	1	Bracket, Governor			
134-2256	1	Housing, Cylinder Air - Rear			
308-0007	1	Switch, Toggle - Ignition			
308-0198	1	Switch, Start			
332-1043	1	Jumper, Start Switch			
517-0021	1	Plug, Dot Button - Rear Air Housing (7/8" Hole)			
517-0045	2	Plug, Dot Button - Rear Air Housing (9/32" Hole)			

SPECIAL PARTS LIST FOR **MODEL** JC-MS **SPEC** 2637V
 FOR STANDARD PARTS REFER TO **CATALOG** 967-0462 **KEY NO.** C
 OPTIONAL GROUPS IN CATALOG ARE LISTED BY GROUP NO. BELOW WHEN USED.

PART NO.	QTY.	DESCRIPTION	PART NO.	QTY.	DESCRIPTION
Charging Alternator (12 Volt)					
Carburetor Air Heater					
502-0020	1	Elbow, Street - Fuel Pump Inlet			
504-0007	1	Valve, Shut-Off - Fuel Pump Inlet			
306-0195	1	Bracket, Starter Solenoid			
307-1031	1	Solenoid, Starter			
150-1199	1	Stud, Governor Adjusting			
150-1110	1	Bracket Assembly, Governor			
134-1785	1	Cover, Cylinder Air Housing			
134-1178	1	Grille, Blower Housing			
517-0108	2	Plug, Blower Housing - Plastic (1-1/16")			
167-1596	3	Cable, Spark Plug (15")			
167-1595	1	Cable, Spark Plug (25")			
167-1426	1	Cable, Coil To Distributor			
134-2255	1	Housing, Blower			
134-2256	1	Housing, Cylinder Air - Rear			
308-0007	1	Switch, Ignition			
308-0198	1	Switch, Start			
332-1043	1	Jumper, Terminal - Start Switch			
517-0021	1	Plug, Dot Button - Housing (7/8" Hole)			
517-0045	1	Plug, Dot Button - Housing (9/32" Hole)			
309-0177	1	Switch, Low Oil Pressure			

SPECIAL PARTS LIST FOR MODEL JC-MF SPEC 2638V
 FOR STANDARD PARTS REFER TO CATALOG 967-0462 KEY NO. C
 OPTIONAL GROUPS IN CATALOG ARE LISTED BY GROUP NO. BELOW WHEN USED.

PART NO.	QTY.	DESCRIPTION	PART NO.	QTY.	DESCRIPTION
Gas Fuel System					
Charging Alternator (12 Volt)					
Low Oil Pressure Cut Off					
Variable Speed Governor Control - Two Spring (1,200 To 2,400 RPM)					
Solenoid Shift Starter					
110-1888	1	Block Assembly, Cylinder (Refer To Standard Cylinder Block For Components, Except Rear Bearing Plate)			
101-0376	1	Plate, Bearing - Rear			
104-0460	1	Crankshaft			
190-0251	1	Housing, Clutch			
190-0253	1	Flange, Adapter - Clutch			
190-0254	1	Washer, Flat - Adapter Flange			
103-0370	1	Cover Assembly, Gear (Refer To Standard Gear Cover For Components, Except Parts Marked *)			
509-0111	1	*Seal, Oil - Crankshaft			
191-0918	1	Stator Assembly, Alternator (Refer To Optional Stator For Components)			
150-1199	1	Stud, Governor Adjusting			
191-0365	1	Bracket, Starter Support			
331-0103	1	Grommet, Fuel Hose Support			
161-0246	1	Magneto, Ignition (Fairbanks Morse), (Refer To Model JCM-MF/2073S Special List For Component Parts)			
160-0674	1	Gear, Magneto Drive			
167-0199	4	Plug, Spark			
167-1432	2	Cable, Spark Plug (Short)			
167-1433	2	Cable, Spark Plug (Long)			
134-2309	1	Housing, Blower			
134-1499	1	Pan, Cylinder Air Housing - Bottom			
134-2801	1	Cover, Cylinder Air Housing			
517-0108	2	Plug, Blower Housing - Plastic (1-1/16")			
134-1178	1	Grille, Blower Housing			

SPECIAL PARTS LIST FOR **MODEL** JC-MS **SPEC** 2691V
 FOR STANDARD PARTS REFER TO **CATALOG** 967-0462 **KEY NO.** C
 OPTIONAL GROUPS IN CATALOG ARE LISTED BY GROUP NO. BELOW WHEN USED.

PART NO.	QTY.	DESCRIPTION	PART NO.	QTY.	DESCRIPTION
Variable Speed Governor Control - Two Spring (1,200 To 2,400 RPM)					
Thermo-Magnetic Choke					
Charging Alternator (12 Volt)					
Carburetor Air Heater					
502-0020	1	Elbow, Street - Fuel Pump Inlet			
504-0007	1	Valve, Shut-Off - Fuel Pump Inlet			
306-0195	1	Bracket, Starter Solenoid			
307-0367	1	Solenoid, Starter			
150-1199	1	Stud, Governor Adjusting			
134-1785	1	Cover, Cylinder Air Housing			
134-1178	1	Grille, Blower Housing			
517-0108	2	Plug, Blower Housing - Plastic (1-1/16")			
167-1596	3	Cable, Spark Plug (15")			
167-1595	1	Cable, Spark Plug (25")			
167-1426	1	Cable, Coil To Distributor			
134-2253	1	Housing, Blower			
134-2256	1	Housing, Cylinder Air - Rear			
308-0007	1	Switch, Ignition			
308-0198	1	Switch, Start			
323-1043	1	Jumper, Terminal - Start Switch			
517-0021	1	Plug, Dot Button - Housing (7/8" Hole)			
517-0045	1	Plug, Dot Button - Housing (9/32" Hole)			
307-0177	1	Switch, Low Oil Pressure			

SPECIAL PARTS LIST FOR **MODEL** JC-MF **SPEC** 2712V
 FOR STANDARD PARTS REFER TO **CATALOG** 967-0462 **KEY NO.** C
 OPTIONAL GROUPS IN CATALOG ARE LISTED BY GROUP NO. BELOW WHEN USED.

PART NO.	QTY.	DESCRIPTION	PART NO.	QTY.	DESCRIPTION
Gas-Gasoline Fuel System					
Thermo-Magnetic Choke					
Charging Alternator (12 Volt)					
Twin Disc Clutch					
309-0177	1	Switch, Low Oil Pressure			
110-0879	8	Screw, Cap - Clutch Mounting			
502-0020	1	Elbow, Street - Fuel Pump Inlet			
504-0007	1	Valve, Shut-Off - Fuel Pump Inlet			
306-0195	1	Bracket, Starter Solenoid			
307-1031	1	Solenoid, Starter			
150-1199	1	Stud, Governor Adjusting			
150-1110	1	Bracket Assembly, Governor			
134-1785	1	Cover, Cylinder Air Housing			
134-1178	1	Grille, Blower Housing			
517-0108	2	Plug, Blower Housing - Plastic (1-1/16")			
167-1596	3	Cable, Spark Plug (15")			
167-1595	1	Cable, Spark Plug (25")			
167-1426	1	Cable, Coil To Distributor			
134-2255	1	Housing, Blower			
134-2256	1	Housing, Cylinder Air - Rear			
308-0007	1	Switch, Ignition			
308-0198	1	Switch, Start			
332-1043	1	Jumper, Terminal - Start Switch			
517-0021	1	Plug, Dot Button - Housing (7/8" Hole)			
517-0045	1	Plug, Dot Button - Housing (9/32" Hole)			

SPECIAL PARTS LIST FOR **MODEL** JC-MS **SPEC** 2713V
 FOR STANDARD PARTS REFER TO **CATALOG** 967-0462 **KEY NO.** C
 OPTIONAL GROUPS IN CATALOG ARE LISTED BY GROUP NO. BELOW WHEN USED.

PART NO.	QTY.	DESCRIPTION	PART NO.	QTY.	DESCRIPTION
Gas-Gasoline Fuel System					
Thermo-Magnetic Choke					
Charging Alternator (12 Volt)					
502-0020	1	Elbow, Street - Fuel Pump Inlet			
504-0007	1	Valve, Shut-Off - Fuel Pump Inlet			
306-0195	1	Bracket, Starter Solenoid			
307-1031	1	Solenoid, Starter			
150-1199	1	Stud, Governor Adjusting			
150-1110	1	Bracket Assembly, Governor			
134-1785	1	Cover, Cylinder Air Housing			
134-1178	1	Grille, Blower Housing			
517-0108	2	Plug, Blower Housing - Plastic (1-1/16")			
167-1596	3	Cable, Spark Plug (15")			
167-1595	1	Cable, Spark Plug (25")			
167-1426	1	Cable, Coil To Distributor			
134-2255	1	Housing, Blower			
134-2256	1	Housing, Cylinder Air - Rear			
308-0007	1	Switch, Ignition			
308-0198	1	Switch, Start			
332-1043	1	Jumper, Terminal - Start Switch			
517-0021	1	Plug, Dot Button - Housing (7/8" Hole)			
517-0045	1	Plug, Dot Button - Housing (9/32" Hole)			
309-0177	1	Switch, Low Oil Pressure			
503-0446	1	Clamp, Hose - Gas Fuel			
104-0400	1	Crankshaft			

SPECIAL PARTS LIST FOR MODEL JC-MS SPEC 2727V
 FOR STANDARD PARTS REFER TO CATALOG 967-0462 KEY NO. C
 OPTIONAL GROUPS IN CATALOG ARE LISTED BY GROUP NO. BELOW WHEN USED.

PART NO.	QTY.	DESCRIPTION	PART NO.	QTY.	DESCRIPTION
Variable Speed Governor Control - Two Spring (1,200 To 2,400 RPM)			134-1415	1	Cover, Governor Linkage Access Hole
Carburetor Air Heater			134-0944	4	Spring, Cylinder Shroud Wrapper
104-0572	1	Flywheel (Includes Ring Gear And Hub)	150-0919	1	Spring, Governor Control
104-0423	1	Gear, Ring - Flywheel	150-1106	1	Bracket Assembly, Governor
104-0557	1	Hub, Flywheel	140-0892	1	Kit, Carburetor Air Heater (Refer To Optional Air Heater For Components, Except Parts Marked *)
134-1431	1	Wheel, Blower	503-0477	1	*Hose, Control To Air Clean
134-0988	1	Plate, Blower Wheel	503-0039	1	*Hose, Adapter To Control
103-0277	1	Cover Assembly, Gear	133-0187	1	*Adapter, Hose - Housing
309-0177	1	Switch, Low Oil Pressure	134-1085	1	Support, Blower Housing And Grille
502-0020	1	Elbow, Street - Fuel Pump Inlet			
504-0007	1	Valve, Shut-Off - Fuel Pump Inlet			
306-0195	1	Bracket, Starter Solenoid			
307-1031	1	Solenoid, Starter			
150-1082	1	Stud, Governor Adjusting			
167-1596	3	Cable, Spark Plug (15")			
167-1595	1	Cable, Spark Plug (25")			
167-1426	1	Cable, Coil To Distributor			
134-1433	1	Housing, Blower			
134-2256	1	Housing, Cylinder Air - Rear			
308-0007	1	Switch, Ignition			
308-0198	1	Switch, Start			
332-1043	1	Jumper, Terminal - Start Switch			
517-0021	2	Plug, Dot Button - Housing (7/8" Hole)			
517-0045	1	Plug, Dot Button - Housing (9/32" Hole)			
134-1109	1	Shroud, Cylinder - Front			
134-1337	1	Shroud, Cylinder - Rear			
134-1434	1	Cover, Cylinder Shroud			
134-1472	1	Panel, Cylinder Air			
104-0528	1	Pointer, Timing			
134-1435	1	Wrapper, Cylinder Shroud			
134-1429	1	Bracket, Cylinder Shroud			
134-1521	1	Scroll, Air Outlet (Includes Guard)			
134-3081	1	Guard, Scroll Air Outlet			
134-1428	1	Baffle, Air - Rear			
134-1430	1	Baffle, Air - Center			
134-1427	1	Baffle, Air - Front			



SPECIAL PARTS LIST FOR MODEL IC-MS SPEC 2805V
 FOR STANDARD PARTS REFER TO CATALOG 967-0462 KEY NO. C
 OPTIONAL GROUPS IN CATALOG ARE LISTED BY GROUP NO. BELOW WHEN USED.

PART NO.	QTY.	DESCRIPTION	PART NO.	QTY.	DESCRIPTION
High Air Temperature Cut Off Thermo-Magnetic Choke Charging Alternator (12 Volt)					
502-0281	2	Connector, Inverted Male - Oil Line To Cylinder Head			
309-0177	1	Switch, Low Oil Pressure			
502-0020	1	Elbow, Street - Fuel Pump Inlet			
504-0007	1	Valve, Shut-Off - Fuel Pump Inlet			
306-0195	1	Bracket, Starter Solenoid			
307-1031	1	Solenoid, Starter			
150-1199	1	Stud, Governor Adjusting			
150-1110	1	Bracket Assembly, Governor			
134-1785	1	Cover, Cylinder Air Housing			
134-1178	1	Grille, Blower Housing			
517-0108	2	Plug, Blower Housing - Plastic (1-1/16")			
167-1596	3	Cable, Spark Plug (15")			
167-1595	1	Cable, Spark Plug (25")			
167-1426	1	Cable, Coil To Distributor			
134-2255	1	Housing, Blower			
134-2256	1	Housing, Cylinder Air - Rear			
308-0007	1	Switch, Ignition			
308-0198	1	Switch, Start			
332-1043	1	Jumper, Terminal - Start Switch			
517-0021	1	Plug, Dot Button - Housing (7/8" Hole)			
517-0045	1	Plug, Dot Button - Housing (9/32" Hole)			
140-0645	1	Adapter, Air Cleaner To Carburetor Air Inlet			
Parts Not Furnished By Onan Air Cleaner					

SPECIAL PARTS LIST FOR **MODEL** JC-MS **SPEC** 2835V
 FOR STANDARD PARTS REFER TO **CATALOG** 967-0462 **KEY NO.** C
 OPTIONAL GROUPS IN CATALOG ARE LISTED BY GROUP NO. BELOW WHEN USED.

PART NO.	QTY.	DESCRIPTION	PART NO.	QTY.	DESCRIPTION
Carburetor Air Heater					
Thermo-Magnetic Choke					
Air Outlet Duct					
502-0281	2	Connector, Inverted Male - Oil Line To Cylinder Head			
502-0020	1	Elbow, Street - Fuel Pump Inlet			
504-0007	1	Valve, Shut-Off - Fuel Pump Inlet			
306-0195	1	Bracket, Starter Solenoid			
307-1031	1	Solenoid, Starter			
103-0277	1	Cover Assembly, Gear			
150-1199	1	Stud, Governor Adjusting			
150-1110	1	Bracket Assembly, Governor			
134-1785	1	Cover, Cylinder Air Housing			
134-1178	1	Grille, Blower Housing			
517-0108	2	Plug, Blower Housing - Plastic (1-1/16")			
167-1596	3	Cable, Spark Plug (15")			
167-1595	1	Cable, Spark Plug (25")			
167-1426	1	Cable, Coil To Distributor			
103-0277	1	Cover Assembly, Gear			

SPECIAL PARTS LIST FOR **MODEL** JB-MS **SPEC** 3011T
 FOR STANDARD PARTS REFER TO **CATALOG** 967-0462 **KEY NO.** B
 OPTIONAL GROUPS IN CATALOG ARE LISTED BY GROUP NO. BELOW WHEN USED.

PART NO.	QTY.	DESCRIPTION	PART NO.	QTY.	DESCRIPTION
High Compression Pistons					
Gas Fuel System					
Variable Speed Governor Control - Two Spring (1,200 To 2,400 RPM)					
Charging Alternator (12 Volt)					
Starter Solenoid					
306-0196	1	Bracket, Starter Solenoid			
191-0918	1	Stator Assembly, Alternator (Refer To Optional Stator Assembly For Components)			
312-0099	1	Capacitor (.10 Mfd.)			
304-0060	1	Resistor, Fixed (1.72 Ohm, 25 Watt)			
304-0292	1	Insulator, Fixed Resistor			
304-0014	2	Washer, Centering - Fixed Resistor			
134-2242	1	Housing, Blower			
134-1178	1	Grille, Blower Housing			
517-0108	1	Plug, Grille - Plastic (1-1/16")			
502-0274	1	Connector, Oil Line To Cylinder Head			
309-0177	1	Switch, Low Oil Pressure			
134-2256	1	Housing, Cylinder Air - Rear			
308-0007	1	Switch, Toggle - Ignition			
308-0198	1	Switch, Start			
332-1043	1	Jumper, Start Switch			
517-0021	1	Plug, Dot Button - Rear Air Housing (7/8" Hole)			
517-0045	2	Plug, Dot Button - Rear Air Housing (9/32" Hole)			

SPECIAL PARTS LIST FOR **MODEL** JC-MS **SPEC** 3134V
 FOR STANDARD PARTS REFER TO **CATALOG** 967-0462 **KEY NO.** C
 OPTIONAL GROUPS IN CATALOG ARE LISTED BY GROUP NO. BELOW WHEN USED.

PART NO.	QTY.	DESCRIPTION	PART NO.	QTY.	DESCRIPTION
Variable Speed Governor Control - Two Spring (1,200 To 2,400 RPM)					
Thermo-Magnetic Choke					
Charging Alternator (12 Volt)					
Carburetor Air Heater					
502-0020	1	Elbow, Street - Fuel Pump Inlet			
504-0007	1	Valve, Shut-Off - Fuel Pump Inlet			
306-0195	1	Bracket, Starter Solenoid			
307-1031	1	Solenoid, Starter			
150-1199	1	Stud, Governor Adjusting			
134-1785	1	Cover, Cylinder Air Housing			
134-1178	1	Grille, Blower Housing			
517-0108	2	Plug, Blower Housing - Plastic (1-1/16")			
167-1596	3	Cable, Spark Plug (15")			
167-1595	1	Cable, Spark Plug (25")			
167-1426	1	Cable, Coil To Distributor			
134-2253	1	Housing, Blower			
134-2256	1	Housing, Cylinder Air - Rear			
308-0007	1	Switch, Ignition			
308-0198	1	Switch, Start			
323-1043	1	Jumper, Terminal - Start Switch			
517-0021	1	Plug, Dot Button - Housing (7/8" Hole)			
517-0045	2	Plug, Dot Button - Housing (9/32" Hole)			

SPECIAL PARTS LIST FOR MODEL 3C-MS SPEC 3215V
 FOR STANDARD PARTS REFER TO CATALOG 967-0462 KEY NO. C
 OPTIONAL GROUPS IN CATALOG ARE LISTED BY GROUP NO. BELOW WHEN USED.

PART NO.	QTY.	DESCRIPTION	PART NO.	QTY.	DESCRIPTION
Low Oil Pressure Cut Off			502-0281	2	Connector, Inverted Male - Oil Line To Cylinder Head
Variable Speed Governor Control - Two Spring (1,200 To 2,400 RPM)			140-0892	1	Kit, Carburetor Air Heater (Refer To Optional Air Heater For Components, Except Parts Marked *)
Carburetor Air Heater			503-0477	1	*Hose, Control To Air Cleaner
104-0572	1	Flywheel (Includes Ring Gear And Hub)	503-0039	1	*Hose, Adapter To Control
104-0423	1	Gear, Ring - Flywheel	133-0187	1	*Adapter, Hose - Housing
104-0557	1	Hub, Flywheel	191-0496	1	Plate, Centrifugal Switch
134-1431	1	Wheel, Blower	309-0134	1	Switch, Centrifugal
134-0988	1	Plate, Blower Wheel	309-0152	1	Plunger, Centrifugal Switch
103-0277	1	Cover Assembly, Gear	160-0382	1	Diaphragm, Centrifugal Switch
502-0020	1	Elbow, Street - Fuel Pump Inlet	160-0720	1	Spacer, Control - Centrifugal Switch
504-0007	1	Valve, Shut-Off - Fuel Pump Inlet	160-0721	1	Gasket, Switch Plate
306-0195	1	Bracket, Starter Solenoid	191-0392	1	Cover, Centrifugal Switch Plate
307-1031	1	Solenoid, Starter	191-0388	1	Control Assembly, Centrifugal Switch (Includes Weight Springs)
167-1596	3	Cable, Spark Plug (15")	160-0711	2	Spring, Weight - Centrifugal Switch Control
167-1595	1	Cable, Spark Plug (25")	160-0806	1	Disc, Thrust Plunger - Centrifugal Switch
167-1426	1	Cable, Coil To Distributor	160-0774	1	Plunger, Control - Centrifugal Switch
134-3328	1	Housing, Blower	160-0773	1	Spring, Plunger - Centrifugal Switch Control
134-1109	1	Shroud, Cylinder - Front	338-0261	1	Harness, Wiring - Coil To Centrifugal Switch
134-1337	1	Shroud, Cylinder - Rear	320-0104	1	Relay, Emergency Start
134-1434	1	Cover, Cylinder Shroud	304-0217	1	Resistor, Fixed (1 Ohm, 10 Watt)
134-1472	1	Panel, Cylinder Air			
104-0528	1	Pointer, Timing			
134-1435	1	Wrapper, Cylinder Shroud			
134-1429	1	Bracket, Cylinder Shroud			
134-1521	1	Scroll, Air Outlet (Includes Guard)			
134-3081	1	Guard, Scroll Air Outlet			
134-1428	1	Baffle, Air - Rear			
134-1430	1	Baffle, Air - Center			
134-1427	1	Baffle, Air - Front			
134-1415	1	Cover, Governor Linkage Access Hole			
134-0944	4	Spring, Cylinder Shroud Wrapper			
134-1085	1	Support, Blower Housing And Grille			
517-0021	1	Plug, Dot Button - Air Scroll (7/8" Hole)			
517-0112	1	Plug, Blind - Air Scroll (1" Hole)			
150-0919	1	Spring, Governor Control			
150-1106	1	Bracket Assembly, Governor			
150-1082	1	Stud, Governor Adjusting			

SPECIAL PARTS LIST FOR MODEL JC-MS SPEC 3240V
 FOR STANDARD PARTS REFER TO CATALOG 967-0462 KEY NO. C
 OPTIONAL GROUPS IN CATALOG ARE LISTED BY GROUP NO. BELOW WHEN USED.

PART NO.	QTY.	DESCRIPTION	PART NO.	QTY.	DESCRIPTION
Gas Fuel System					
Variable Speed Governor Control - Two Spring (1,200 To 2,400 RPM)					
High Air Temperature Cut Off					
Charging Alternator (12 Volt)					
306-0195	1	Bracket, Starter Solenoid			
307-1031	1	Solenoid, Starter			
150-1199	1	Stud, Governor Adjusting			
134-1785	1	Cover, Cylinder Air Housing			
134-1178	1	Grille, Blower Housing			
517-0108	1	Plug, Blower Housing - Plastic (1-1/16")			
167-1596	3	Cable, Spark Plug (15")			
167-1595	1	Cable, Spark Plug (25")			
167-1426	1	Cable, Coil To Distributor			
134-2253	1	Housing, Blower			

SPECIAL PARTS LIST FOR **MODEL** JC-MS **SPEC** 3243V
 FOR STANDARD PARTS REFER TO **CATALOG** 967-0462 **KEY NO.** C
 OPTIONAL GROUPS IN CATALOG ARE LISTED BY GROUP NO. BELOW WHEN USED.

PART NO.	QTY.	DESCRIPTION	PART NO.	QTY.	DESCRIPTION
Variable Speed Governor Control - Two Spring (1,200 To 2,400 RPM)					
Gas Fuel System					
Charging Alternator (12 Volt)					
309-0177	1	Switch, Low Oil Pressure			
306-0195	1	Bracket, Starter Solenoid			
307-1031	1	Solenoid, Starter			
150-1199	1	Stud, Governor Adjusting			
134-1785	1	Cover, Cylinder Air Housing			
134-1178	1	Grille, Blower Housing			
517-0108	1	Plug, Blower Housing - Plastic (1-1/16")			
167-1596	3	Cable, Spark Plug (15")			
167-1595	1	Cable, Spark Plug (25")			
167-1426	1	Cable, Coil To Distributor			
134-2253	1	Housing, Blower			
134-2256	1	Housing, Cylinder Air - Rear			
308-0007	1	Switch, Ignition			
308-0198	1	Switch, Start			
332-1043	1	Jumper, Terminal - Start Switch			
517-0021	1	Plug, Dot Button - Housing (7/8" Hole)			
517-0045	1	Plug, Dot Button - Housing (9/32" Hole)			

SPECIAL PARTS LIST FOR MODEL JC-MS SPEC 3248V
 FOR STANDARD PARTS REFER TO CATALOG 967-0462 KEY NO. C
 OPTIONAL GROUPS IN CATALOG ARE LISTED BY GROUP NO. BELOW WHEN USED.

PART NO.	QTY.	DESCRIPTION	PART NO.	QTY.	DESCRIPTION
Carburetor Air Heater					
193-0108	1	Sender, Oil Pressure			
502-0053	1	Elbow, Street - Oil Pressure Sender (45°)			
502-0020	1	Elbow, Street - Fuel Pump Inlet			
504-0007	1	Valve, Shut-Off - Fuel Pump Inlet			
306-0195	1	Bracket, Starter Solenoid			
307-1031	1	Solenoid, Starter			
103-0277	1	Cover Assembly, Gear			
150-1199	1	Stud, Governor Adjusting			
150-1110	1	Bracket Assembly, Governor			
134-1785	1	Cover, Cylinder Air Housing			
134-1178	1	Grille, Blower Housing			
517-0108	1	Plug, Blower Housing - Plastic (1-1/16")			
167-1596	3	Cable, Spark Plug (15")			
167-1595	1	Cable, Spark Plug (25")			
167-1426	1	Cable, Coil To Distributor			

SPECIAL PARTS LIST FOR MODEL JC-MS SPEC 3334V
 FOR STANDARD PARTS REFER TO CATALOG 967-0462 KEY NO. C
 OPTIONAL GROUPS IN CATALOG ARE LISTED BY GROUP NO. BELOW WHEN USED.

PART NO.	QTY.	DESCRIPTION	PART NO.	QTY.	DESCRIPTION
Gas Fuel System					
Charging Alternator (12 Volt)					
306-0195	1	Bracket, Starter Solenoid			
307-1031	1	Solenoid, Starter			
150-1199	1	Stud, Governor Adjusting			
150-1110	1	Bracket Assembly, Governor			
134-1785	1	Cover, Cylinder Air Housing			
134-1178	1	Grille, Blower Housing			
517-0108	2	Plug, Blower Housing - Plastic (1-1/16")			
167-1596	3	Cable, Spark Plug (15")			
167-1595	1	Cable, Spark Plug (25")			
167-1426	1	Cable, Coil To Distributor			
134-2255	1	Housing, Blower			
134-2256	1	Housing, Cylinder Air - Rear			
308-0007	1	Switch, Ignition			
308-0198	1	Switch, Start			
332-1043	1	Jumper, Terminal - Start Switch			
517-0021	1	Plug, Dot Button - Housing (7/8" Hole)			
517-0045	1	Plug, Dot Button - Housing (9/32" Hole)			

SPECIAL PARTS LIST FOR **MODEL** JC-MS **SPEC** 3381V
 FOR STANDARD PARTS REFER TO **CATALOG** 967-0462 **KEY NO.** C
 OPTIONAL GROUPS IN CATALOG ARE LISTED BY GROUP NO. BELOW WHEN USED.

PART NO.	QTY.	DESCRIPTION	PART NO.	QTY.	DESCRIPTION
Variable Speed Governor Control - Two Spring (1,200 To 2,400 RPM)					
Air Outlet Duct					
Charging Alternator (12 Volt)					
Carburetor Air Heater					
502-0020	1	Elbow, Street - Fuel Pump Inlet			
504-0007	1	Valve, Shut-Off - Fuel Pump Inlet			
306-0195	1	Bracket, Starter Solenoid			
307-1031	1	Solenoid, Starter			
150-1199	1	Stud, Governor Adjusting			
134-1785	1	Cover, Cylinder Air Housing			
134-1178	1	Grille, Blower Housing			
517-0108	2	Plug, Blower Housing - Plastic (1-1/16")			
167-1596	3	Cable, Spark Plug (15")			
167-1595	1	Cable, Spark Plug (25")			
167-1426	1	Cable, Coil To Distributor			
134-2253	1	Housing, Blower			
134-2256	1	Housing, Cylinder Air - Rear			
308-0007	1	Switch, Ignition			
308-0198	1	Switch, Start			
332-1043	1	Jumper, Terminal - Start Switch			
517-0021	1	Plug, Dot Button - Housing (7/8" Hole)			
517-0045	2	Plug, Dot Button - Housing (9/32" Hole)			
502-0281	2	Connector, Inverted Male - Oil Line To Cylinder Head			

SPECIAL PARTS LIST FOR MODEL JB-MS SPEC 3432T
 FOR STANDARD PARTS REFER TO CATALOG 967-0462 KEY NO. B
 OPTIONAL GROUPS IN CATALOG ARE LISTED BY GROUP NO. BELOW WHEN USED.

PART NO.	QTY.	DESCRIPTION	PART NO.	QTY.	DESCRIPTION
Gas Fuel System					
High Compression Pistons					
Variable Speed Governor Control - Two Spring (1,200 To 2,400 RPM)					
Charging Alternator (12 Volt)					
Starter Solenoid					
306-0196	1	Bracket, Starter Solenoid			
191-0918	1	Stator Assembly, Alternator (Refer To Optional Stator Assembly For Components)			
312-0099	1	Capacitor (.10 Mfd.)			
304-0060	1	Resistor, Fixed (1.72 Ohm, 25 Watt)			
304-0292	1	Insulator, Fixed Resistor			
304-0014	2	Washer, Centering - Fixed Resistor			
134-2242	1	Housing, Blower			
134-1178	1	Grille, Blower Housing			
517-0108	1	Plug, Grille - Plastic (1-1/16")			
191-0409	1	Flywheel (Includes Ring Gear)			
104-0423	1	Gear, Ring - Flywheel			
502-0274	1	Connector, Oil Line To Cylinder Head			
134-2256	1	Housing, Cylinder Air - Rear			
308-0007	1	Switch, Toggle - Ignition			
308-0198	1	Switch, Start			
332-1043	1	Jumper, Start Switch			
517-0021	1	Plug, Dot Button - Rear Air Housing (7/8" Hole)			
517-0045	2	Plug, Dot Button - Rear Air Housing (9/32" Hole)			

SPECIAL PARTS LIST FOR MODEL JG-MF SPEC 3435V
 FOR STANDARD PARTS REFER TO CATALOG 967-0462 KEY NO. C
 OPTIONAL GROUPS IN CATALOG ARE LISTED BY GROUP NO. BELOW WHEN USED.

PART NO.	QTY.	DESCRIPTION	PART NO.	QTY.	DESCRIPTION
Variable Speed Governor Control - Two Spring (1,200 To 2,400 RPM) Charging Alternator (12 Volt) Air Discharge Shutter Thermo-Magnetic Choke Twin Disc Clutch High Air Temperature Cut Off					
309-0177	1	Switch, Low Oil Pressure			
193-0108	1	Sender, Oil Pressure			
502-0058	1	Tee, Street - Oil Pressure Sender			
140-0645	1	Adapter, Air Cleaner To Carburetor Inlet			
191-0918	1	Stator Assembly, Alternator (Refer To Optional Stator Assembly For Components)			
502-0020	1	Elbow, Street - Fuel Pump Inlet			
504-0007	1	Valve, Shut-Off - Fuel Pump Inlet			
306-0195	1	Bracket, Starter Solenoid			
307-1031	1	Solenoid, Starter			
150-1199	1	Stud, Governor Adjusting			
134-1785	1	Cover, Cylinder Air Housing			
134-1178	1	Grille, Blower Housing			
517-0108	2	Plug, Blower Housing - Plastic (1-1/16")			
167-1596	3	Cable, Spark Plug (15")			
167-1595	1	Cable, Spark Plug (25")			
167-1426	1	Cable, Coil To Distributor			
134-2253	1	Housing, Blower			
134-2256	1	Housing, Cylinder Air - Rear			
308-0007	1	Switch, Ignition			
308-0198	1	Switch, Start			
332-1043	1	Jumper, Terminal - Start Switch			
517-0021	1	Plug, Dot Button - Housing (7/8" Hole)			
517-0045	1	Plug, Dot Button - Housing (9/32" Hole)			

SPECIAL PARTS LIST FOR MODEL JC-MS SPEC 3488V
 FOR STANDARD PARTS REFER TO CATALOG 967-0462 KEY NO. C
 OPTIONAL GROUPS IN CATALOG ARE LISTED BY GROUP NO. BELOW WHEN USED.

PART NO.	QTY.	DESCRIPTION	PART NO.	QTY.	DESCRIPTION
Two Speed Governor Control - Two Spring (1,200 To 2,400 RPM) High Air Temperature Cut Off Charging Alternator (12 Volt) Carburetor Air Heater					
502-0020	1	Elbow, Street - Fuel Pump Inlet			
504-0007	1	Valve, Shut-Off - Fuel Pump Inlet			
306-0195	1	Bracket, Starter Solenoid			
307-1031	1	Solenoid, Starter			
502-0281	2	Connector, Inverted Male - Oil Line To Cylinder Head			
510-0046	5	Ball, Fly - Governor			
309-0177	1	Switch, Low Oil Pressure			
150-1199	1	Stud, Governor Adjusting			
134-1785	1	Cover, Cylinder Air Housing			
134-1178	1	Grille, Blower Housing			
517-0108	2	Plug, Blower Housing - Plastic (1-1/16")			
167-1596	3	Cable, Spark Plug (15")			
167-1595	1	Cable, Spark Plug (25")			
167-1426	1	Cable, Coil To Distributor			
134-3629	1	Housing, Blower			
134-2256	1	Housing, Cylinder Air - Rear			
308-0007	1	Switch, Ignition			
308-0198	1	Switch, Start			
332-1043	1	Jumper, Terminal - Start Switch			
517-0021	1	Plug, Dot Button - Housing (7/8" Hole)			
517-0045	1	Plug, Dot Button - Housing (9/32" Hole)			

SPECIAL PARTS LIST FOR MODEL JC-MF SPEC 3503V
 FOR STANDARD PARTS REFER TO CATALOG 967-0462 KEY NO. C
 OPTIONAL GROUPS IN CATALOG ARE LISTED BY GROUP NO. BELOW WHEN USED.

PART NO.	QTY.	DESCRIPTION	PART NO.	QTY.	DESCRIPTION
Variable Speed Governor Control - Two Spring (1,200 To 2,400 RPM)					
Charging Alternator (12 Volt)					
Air Discharge Shutter					
Thermo-Magnetic Choke					
Twin Disc Clutch					
High Air Temperature Cut Off					
309-0177	1	Switch, Low Oil Pressure			
502-0281	2	Connector, Inverted Male - Oil Line To Cylinder Head			
140-0645	1	Adapter, Air Cleaner To Carburetor Inlet			
191-0918	1	Stator Assembly, Alternator (Refer To Optional Stator Assembly For Components)			
502-0020	1	Elbow, Street - Fuel Pump Inlet			
504-0007	1	Valve, Shut-Off - Fuel Pump Inlet			
306-0195	1	Bracket, Starter Solenoid			
307-1031	1	Solenoid, Starter			
150-1199	1	Stud, Governor Adjusting			
134-1785	1	Cover, Cylinder Air Housing			
134-1178	1	Grille, Blower Housing			
517-0108	2	Plug, Blower Housing - Plastic (1-1/16")			
167-1596	3	Cable, Spark Plug (15")			
167-1595	1	Cable, Spark Plug (25")			
167-1426	1	Cable, Coil To Distributor			
134-2253	1	Housing, Blower			
134-2256	1	Housing, Cylinder Air - Rear			
308-0007	1	Switch, Ignition			
308-0198	1	Switch, Start			
332-1043	1	Jumper, Terminal - Start Switch			
517-0021	1	Plug, Dot Button - Housing (7/8" Hole)			
517-0045	2	Plug, Dot Button - Housing (9/32" Hole)			

SPECIAL PARTS LIST FOR MODEL JC-MS SPEC 3563V
 FOR STANDARD PARTS REFER TO CATALOG 967-0462 KEY NO. C
 OPTIONAL GROUPS IN CATALOG ARE LISTED BY GROUP NO. BELOW WHEN USED.

PART NO.	QTY.	DESCRIPTION	PART NO.	QTY.	DESCRIPTION
Air Outlet Duct					
Charging Alternator (12 Volt)					
Carburetor Air Heater					
502-0020	1	Elbow, Street - Fuel Pump Inlet			
504-0007	1	Valve, Shut-Off - Fuel Pump Inlet			
306-0195	1	Bracket, Starter Solenoid			
307-1031	1	Solenoid, Starter			
150-1199	1	Stud, Governor Adjusting			
150-1110	1	Bracket Assembly, Governor			
134-1785	1	Cover, Cylinder Air Housing			
134-1178	1	Grille, Blower Housing			
517-0108	2	Plug, Blower Housing - Plastic (1-1/16")			
167-1596	3	Cable, Spark Plug (15")			
167-1595	1	Cable, Spark Plug (25")			
167-1426	1	Cable, Coil To Distributor			
134-2255	1	Housing, Blower			
134-2256	1	Housing, Cylinder Air - Rear			
308-0007	1	Switch, Ignition			
308-0198	1	Switch, Start			
332-1043	1	Jumper, Terminal - Start Switch			
517-0021	1	Plug, Dot Button - Housing (7/8" Hole)			
517-0045	2	Plug, Dot Button - Housing (9/32" Hole)			
502-0281	2	Connector, Inverted Male - Oil Line To Cylinder Head			

SPECIAL PARTS LIST FOR **MODEL** JC-MF **SPEC** 3578V
 FOR STANDARD PARTS REFER TO **CATALOG** 967-0462 **KEY NO.** C
 OPTIONAL GROUPS IN CATALOG ARE LISTED BY GROUP NO. BELOW WHEN USED.

PART NO.	QTY.	DESCRIPTION	PART NO.	QTY.	DESCRIPTION
Thermo-Magnetic Choke					
Charging Alternator (12 Volt)					
104-0460	1	Crankshaft			
502-0281	2	Connector, Inverted Male - Oil Line To Cylinder Head			
309-0177	1	Switch, Low Oil Pressure			
193-0108	1	Sender, Oil Pressure			
502-0058	1	Tee, Street - Oil Pressure Sender			
140-0645	1	Adapter, Air Cleaner To Carburetor Inlet			
191-0918	1	Stator Assembly, Alternator (Refer To Optional Stator Assembly For Components)			
502-0020	1	Elbow, Street - Fuel Pump Inlet			
504-0007	1	Valve, Shut-Off - Fuel Pump Inlet			
306-0195	1	Bracket, Starter Solenoid			
307-1031	1	Solenoid, Starter			
150-1199	1	Stud, Governor Adjusting			
150-1110	1	Bracket Assembly, Governor			
134-1785	1	Cover, Cylinder Air Housing			
134-1178	1	Grille, Blower Housing			
517-0108	2	Plug, Blower Housing - Plastic (1-1/16")			
167-1596	3	Cable, Spark Plug (15")			
167-1595	1	Cable, Spark Plug (25")			
167-1426	1	Cable, Coil To Distributor			
134-2255	1	Housing, Blower			
134-2256	1	Housing, Cylinder Air - Rear			
308-0007	1	Switch, Ignition			
308-0198	1	Switch, Start			
332-1043	1	Jumper, Terminal - Start Switch			
517-0021	1	Plug, Dot Button - Housing (7/8" Hole)			
517-0045	2	Plug, Dot Button - Housing (9/32" Hole)			
190-0251	1	Housing, Clutch			
190-0253	1	Flange, Adapter - Clutch			
190-0254	1	Washer, Flange - Adapter Flange			
515-0006	1	Key, Woodruff - Adapter Flange			

SPECIAL PARTS LIST FOR **MODEL** JC-MS **SPEC** 3700V
 FOR STANDARD PARTS REFER TO **CATALOG** 967-0462 **KEY NO.** C
 OPTIONAL GROUPS IN CATALOG ARE LISTED BY GROUP NO. BELOW WHEN USED.

PART NO.	QTY.	DESCRIPTION	PART NO.	QTY.	DESCRIPTION
Two Speed Governor Control - Two Spring (1,200 To 2,400 RPM) Charging Alternator (12 Volt) Carburetor Air Heater					
502-0020	1	Elbow, Street - Fuel Pump Inlet			
504-0007	1	Valve, Shut-Off - Fuel Pump Inlet			
306-0195	1	Bracket, Starter Solenoid			
307-1031	1	Solenoid, Starter			
150-1199	1	Stud, Governor Adjusting			
134-1785	1	Cover, Cylinder Air Housing			
134-1178	1	Grille, Blower Housing			
517-0108	2	Plug, Blower Housing - Plastic (1-1/16")			
167-1596	3	Cable, Spark Plug (15")			
167-1595	1	Cable, Spark Plug (25")			
167-1426	1	Cable, Coil To Distributor			
134-2253	1	Housing, Blower			
134-2256	1	Housing, Cylinder Air - Rear			
308-0007	1	Switch, Ignition			
308-0198	1	Switch, Start			
332-1043	1	Jumper, Terminal - Start Switch			
517-0021	1	Plug, Dot Button - Housing (7/8" Hole)			
517-0045	1	Plug, Dot Button - Housing (9/32" Hole)			
502-0281	2	Connector, Inverted Male - Oil Line To Cylinder Head			
309-0177	1	Switch, Low Oil Pressure			
150-1697	1	Bracket, Governor Adjusting			
150-1702	1	Bracket, Governor Mounting			

SPECIAL PARTS LIST FOR **MODEL** JC-MS **SPEC** 3711V
 FOR STANDARD PARTS REFER TO **CATALOG** 967-0462 **KEY NO.** C
 OPTIONAL GROUPS IN CATALOG ARE LISTED BY GROUP NO. BELOW WHEN USED.

PART NO.	QTY.	DESCRIPTION	PART NO.	QTY.	DESCRIPTION
Two Speed Governor Control - Two Spring (1,200 To 2,400 RPM) Low Oil Pressure Cut Off Carburetor Air Heater			503-0477	1	*Hose, Control To Air Cleaner
			503-0039	1	*Hose, Adapter To Control
			133-0187	1	*Adapter, Hose - Housing
			191-0496	1	Plate, Centrifugal Switch
			309-0134	1	Switch, Centrifugal
			309-0152	1	Plunger, Centrifugal Switch
			160-0382	1	Diaphragm, Centrifugal
104-0572	1	Flywheel (Includes Ring Gear And Hub)			
104-0423	1	Gear, Ring - Flywheel	160-0720	1	Spacer, Control - Centrifugal
104-0557	1	Hub, Flywheel			
134-1431	1	Wheel, Blower	160-0721	1	Gasket, Switch Plate
134-0988	1	Plate, Blower Wheel	191-0392	1	Cover, Centrifugal Switch
103-0277	1	Cover Assembly, Gear			
502-0020	1	Elbow, Street - Fuel Pump Inlet	191-0388	1	Control Assembly, Centrifugal
504-0007	1	Valve, Shut-Off - Fuel Pump Inlet			
306-0195	1	Bracket, Starter Solenoid	160-0711	2	Spring, Weight - Centrifugal
307-1031	1	Solenoid, Starter			
167-1596	3	Cable, Spark Plug (15")	160-0806	1	Disc, Thrust Plunger -
167-1595	1	Cable, Spark Plug (25")			
167-1426	1	Cable, Coil To Distributor	160-0774	1	Plunger, Control - Centrifugal
134-3328	1	Housing, Blower			
134-1109	1	Shroud, Cylinder - Front	160-0773	1	Spring, Plunger - Centrifugal
134-1337	1	Shroud, Cylinder - Rear			
134-1434	1	Cover, Cylinder Shroud	338-0261	1	Harness, Wiring - Coil To
134-1472	1	Panel, Cylinder Air			
104-0528	1	Pointer, Timing	320-0104	1	Relay, Emergency Start
134-1435	1	Wrapper, Cylinder Shroud	304-0217	1	Resistor, Fixed (1 Ohm,
134-1429	1	Bracket, Cylinder Shroud			
134-1521	1	Scroll, Air Outlet (Includes Guard)	150-1697	1	Bracket, Governor Adjusting
134-3081	1	Guard, Scroll Air Outlet	150-1702	1	Bracket, Governor Mounting
134-1428	1	Baffle, Air - Rear			
134-1430	1	Baffle, Air - Center			
134-1427	1	Baffle, Air - Front			
134-1415	1	Cover, Governor Linkage Access Hole			
134-0944	4	Spring, Cylinder Shroud Wrapper			
134-1085	1	Support, Blower Housing And Grille			
150-0919	1	Spring, Governor Control			
150-1106	1	Bracket Assembly, Governor			
150-1082	1	Stud, Governor Adjusting			
502-0281	2	Connector, Inverted Male - Oil Line To Cylinder Head			
140-0892	1	Kit, Carburetor Air Heater (Refer To Optional Air Heater For Components, Except Parts Marked *)			