

The following catalog  
has gaps in its page  
numbers, or doesn't  
have any numbers.  
We have chosen to  
leave the page  
numbering in the  
order that Acrobat  
assigns it.

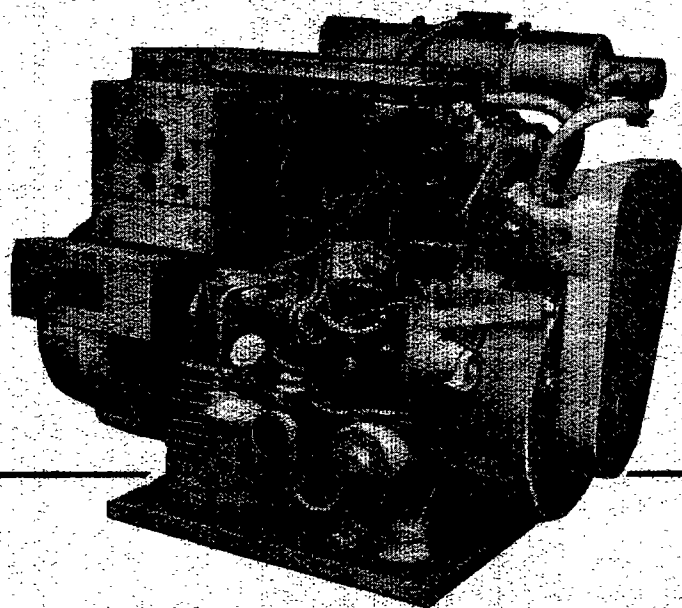
**Onan**

F-10

# **Parts Manual**

**6.0 & 7.5 kW**

**MDJE  
GenSets**



968-0224

9-88 (SPEC AB-AF)

Replaces

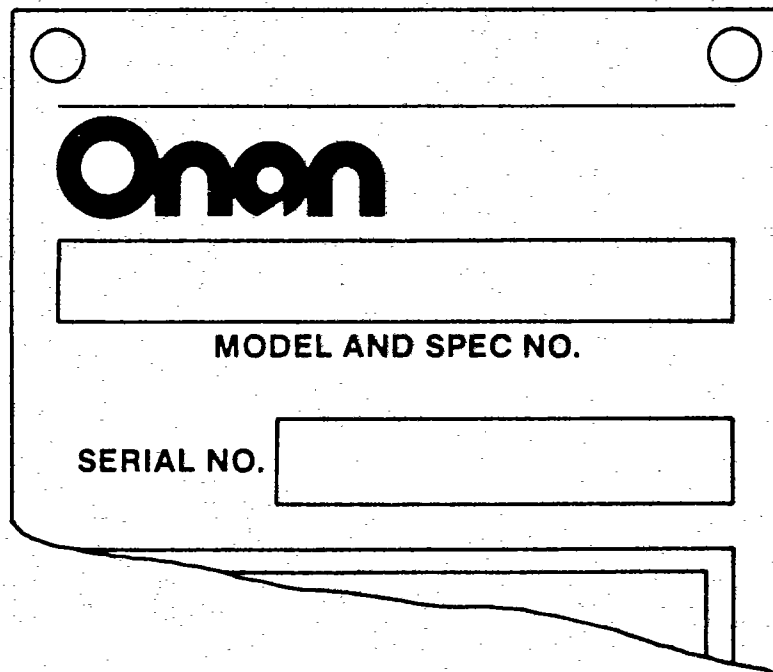
7-81 (Spec AB-AD)

Printed in U.S.A.

## General Information

For parts or service, contact the dealer from whom you purchased this equipment or refer to your Nearest Authorized Onan Parts and Service Center.

To avoid errors or delay in filling your parts order, always give the MODEL, SPEC NO. and SERIAL NO. from the Onan nameplate.

A diagram of an Onan nameplate. It features the Onan logo at the top. Below the logo is a large rectangular box labeled "MODEL AND SPEC NO.". Below that is a smaller rectangular box labeled "SERIAL NO.". The nameplate has two circular mounting holes at the top corners. A small "M-1149" label is located at the bottom right of the nameplate.

**Onan**

**MODEL AND SPEC NO.**

**SERIAL NO.**

M-1149

For handy reference, insert "YOUR" nameplate information in the spaces above.

### **▲WARNING**

TAKE ALL NECESSARY PRECAUTIONS WHEN CHECKING OR CHANGING ENGINE OIL NOT TO INGEST, BREATHE THE FUMES OR CONTACT THE OIL. USED ENGINE OILS HAVE BEEN IDENTIFIED BY FEDERAL AND SOME STATE AGENCIES AS CAUSING CANCER.

### **▲WARNING**

TAKE ALL NECESSARY PRECAUTIONS WHEN HANDLING ENGINE GASKETS. DO NOT INGEST, BREATHE, OR CONTACT DUST FROM GASKETS. USE ADEQUATE VENTILATION AND WEAR PROTECTIVE GLOVES, MASK AND CLOTHING. ASBESTOS HAS BEEN IDENTIFIED BY FEDERAL AND SOME STATE AGENCIES AS CAUSING CANCER.

# INDEX

TITLE	PAGE
INTRODUCTION .....	2
GENERATOR SET DATA TABLE .....	2
STANDARD PARTS SECTION	
Base, Oil .....	7
Block, Cylinder .....	3
Camshaft .....	5
Control .....	24-27
Cooling System .....	20
Crankshaft .....	4
Flywheel .....	4
Gearcase .....	12
Generator (12 Volt) .....	22
Governor .....	13
Head, Cylinder .....	6
Injection System .....	10
Intake System, Air (12 Volt) .....	9
Oil System .....	8
Piston and Rod .....	4
Pump Parts, Water (Sea Water) .....	19
Solenoid, Stop	
Prior to Serial Number D810555279 During Spec AD .....	14
Begin Serial Number D810555280 During Spec AD .....	15
Regulator, Voltage - Spec AB Thru AE .....	28
Regulator, Voltage - Begin Spec AF .....	29
Service Kits and Miscellaneous .....	28
Start Disconnect .....	14
Starter (Mitsubishi) .....	17
Starter (Prestolite) .....	15
Starter Parts (Mitsubishi) .....	18
Starter Parts (Prestolite) .....	16
OPTIONAL PARTS SECTION	
Exchanger, Heat .....	34
Exhaust System, Aqualift .....	33
Filter, Voltage Regulator .....	44
Generator (24 Volt) .....	42
Housing, Sound Shield .....	40
Intake System, Air (24 Volt) .....	31
Keel Cooling .....	37
Pump Parts, Water (Captive Water)	
Sets With Heat Exchanger .....	36
Sets With Keel Cooling .....	39
Switch, Overspeed .....	44

# INTRODUCTION

This catalog applies to the standard MDJE Generator Sets as listed in the Generator Set Data Table. Parts are arranged in groups of related items and each illustrated part is identified by a reference number corresponding to the same reference number in the parts list. Unless otherwise mentioned in the description, parts are interchangeable between models. Parts illustrations are typical. Using the model and specification number from your generator set nameplate, select parts that apply to your set. Right and left sides are determined by facing the engine end (front) of the set.

## GENERATOR SET DATA TABLE

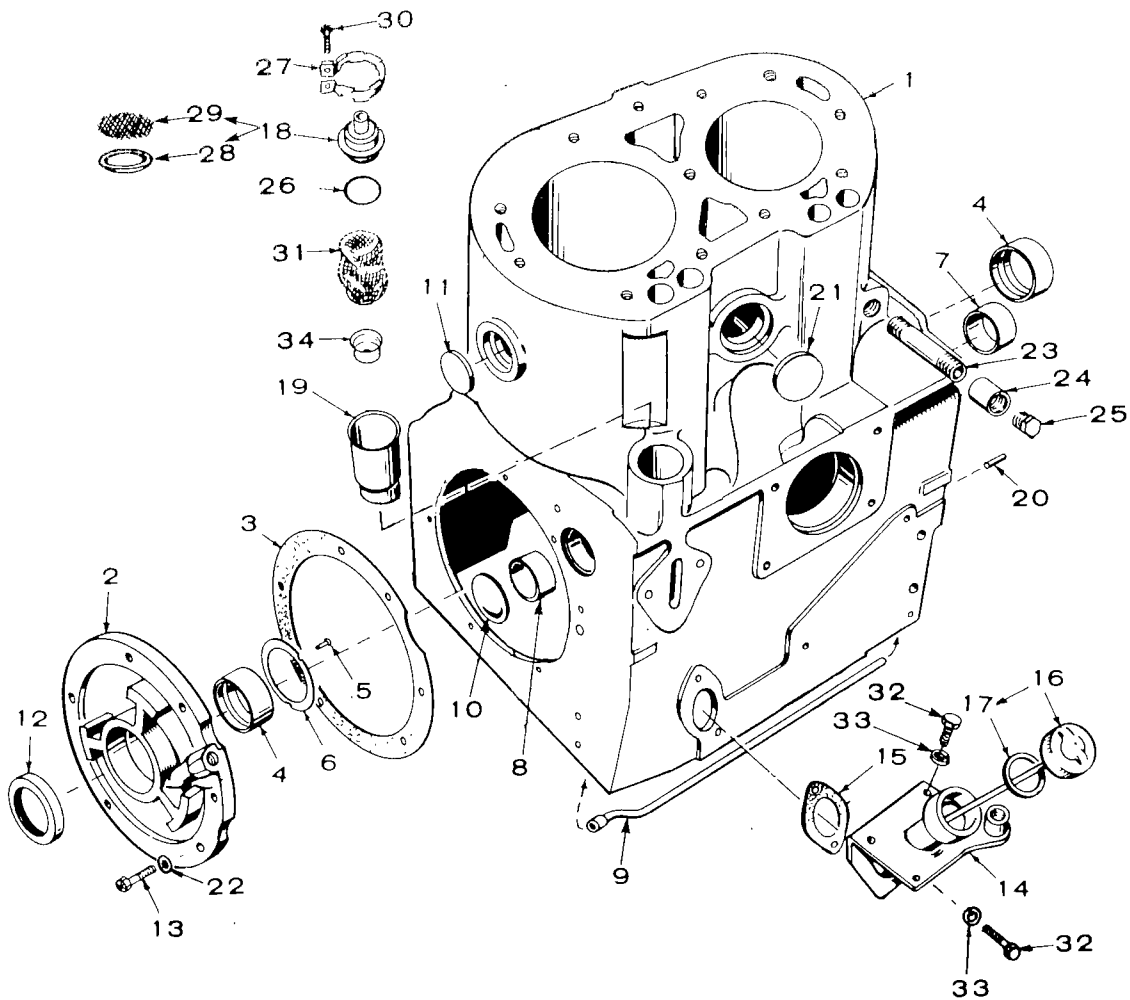
MODEL AND SPECIFICATION NUMBER	ELECTRICAL DATA				
	WATTS	VOLTS	HERTZ	WIRE	PHASE
6.0MDJE-53CR/*	6,000	120/240	50	**	1
6.0MDJE-518R/*	6,000	★	50	12	3
7.5MDJE-3CR/*	7,500	120/240	60	**	1
7.5MDJE-18R/*	7,500	★	60	12	3

- \* - The diagonal line (/) in the model and specification number separates generator set characteristics from the specification number and letters. The specification number denotes customer requested options or deviations from a standard (1AB, 1AC, etc.) model. The specification letters advance (AB to AC, AC to AD, etc.) with major manufacturing changes.
- \*\* - These generators have four load wires which are reconnectable for 120 volt, 2 wire service or 240 volt, 2 wire service or 120/240 volt, 3 wire service.
- ★ - Broad range reconnectable sets, refer to connection diagram inside outlet box cover.

## STANDARD PARTS SECTION

This section contains parts applicable to models listed in the generator set data table.

# CYLINDER BLOCK



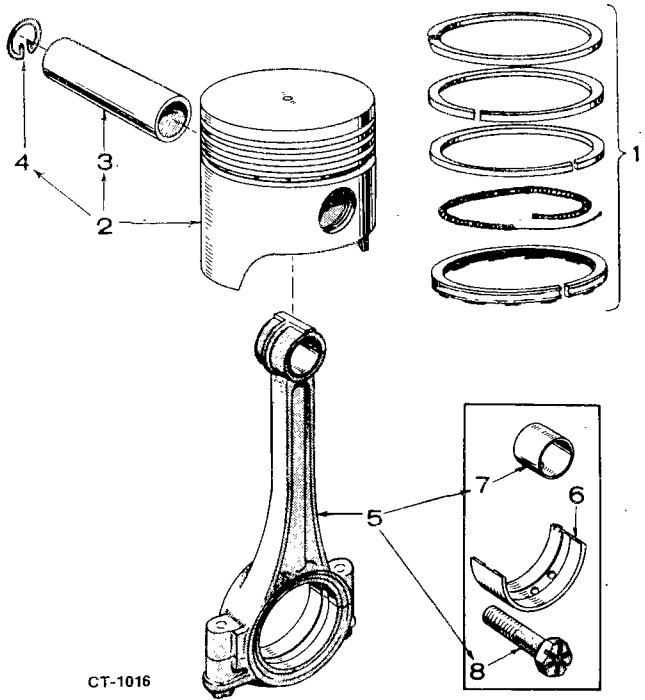
C-1053

REF. NO.	PART NO.	QTY. USED	PART DESCRIPTION
1	110-2693	1	Block Assembly, Cylinder (Includes Tappets and Parts Marked *)
2	101-0337	1	*Plate, Rear Bearing
3	101-0386	1	*Gasket and Shim Kit, Rear Bearing Plate - Includes Bearing Plate Mounting Washers
4	BEARING, MAIN-FRONT AND REAR		
	101-0359	2	*Standard
	101-0359-02	2	.002" Undersize
	101-0359-10	2	.010" Undersize
	101-0359-20	2	.020" Undersize
	101-0359-30	2	.030" Undersize
5	516-0072	4	*Screw, Drive - Crankshaft Thrust Washers
6	104-0420	2	*Washer, Crankshaft Thrust
7	101-0363	1	*Bearing, Camshaft - Front
8	101-0365	1	*Bearing, Camshaft - Rear
9	120-0553	1	*Tube, Crankcase Oil
10	517-0053	1	*Plug, Welch - Rear Camshaft Opening (1-7/16")
11	517-0059	3	*Plug, Welch - Cylinder Block (1-7/16")
12	509-0086	1	Seal, Oil - Rear Housing Plate
13	805-0019	6	*Bolt, Rear Bearing Plate (Special)
14	123-1085	1	Tube, Oil Fill
15	123-0667	1	Gasket, Oil Fill Tube
16	123-1058	1	Cap and Indicator

REF. NO.	PART NO.	QTY. USED	PART DESCRIPTION
17	123-0191	1	Gasket, Cap
18	123-1203	1	Cap and Valve Assembly, Breather (Includes Screen and Retainer)
19	123-0952	1	*Tube, Breather
20	516-0141	2	*Pin, Gearcase Locating
21	517-0096	1	*Plug, Welch - Cylinder Block (1-9/16")
22	526-0245	6	*Washer, Bearing Plate (Special)
23	505-0449	1	Nipple, Pipe - Water Drain (1/4" x 6")
24	505-0027	1	Coupling, Pipe - Water Drain (1/4")
25	502-0153	1	Plug, Pipe - Hex Head (Brass) (1/4") Water Drain
26	509-0117	1	Seal, "O" Ring - Breather
27	123-0951	1	Clamp, Breather
28	123-1201	1	Retainer, Breather Screen
29	123-1202	1	Screen, Breather
30	809-0035	1	Screw, Machine - Round Head Sheet Metal (#8 x 3/4")
31	123-1283	1	Filter, Breather Tube
32	SCREW, CAP - HEX HEAD (5/16-18 x 3/4")		
	800-0026	2	Oil Fill Tube Mounting
	800-0026	3	Fuel Filter Adapter Mounting
33	WASHER, LOCK - SPRING (5/16")		
	850-0045	2	Oil Fill Tube Mounting
	850-0045	3	Fuel Filter Adapter Mounting
34	123-1153	1	Baffle Cup and Holder, Breather

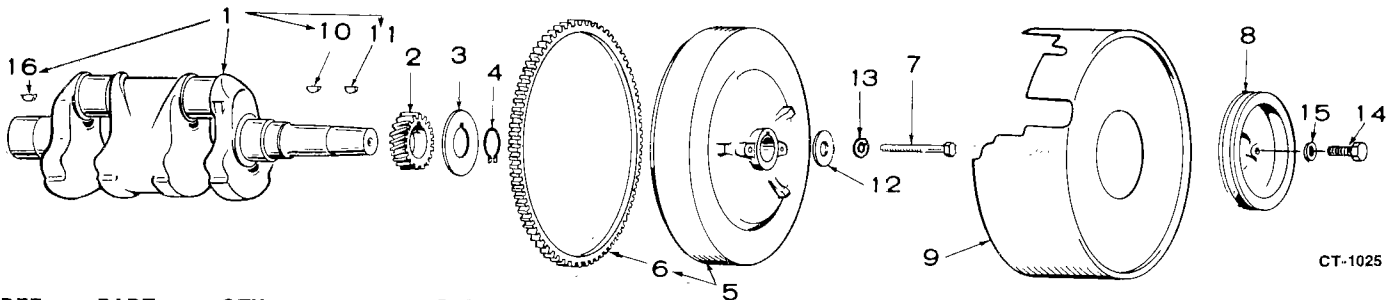
\* - Parts Included in 110-2693 Cylinder Block Assembly.

## PISTON AND ROD



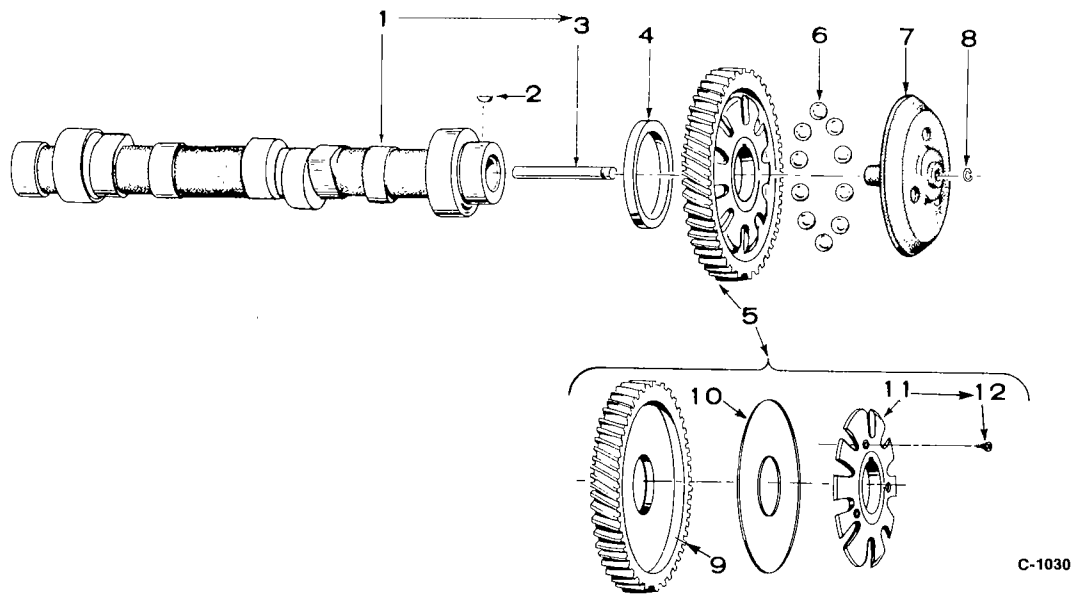
REF. NO.	PART NO.	QTY. USED	PART DESCRIPTION
1	RING SET, PISTON		
	113-0137	2	Standard
	113-0137-05	2	.005" Oversize
	113-0137-10	2	.010" Oversize
	113-0137-20	2	.020" Oversize
	113-0137-30	2	.030" Oversize
	113-0137-40	2	.040" Oversize
2	PISTON AND PIN (Includes Pin Retaining Rings)		
	112-0176	2	Standard
	112-0176-05	2	.005" Oversize
	112-0176-10	2	.010" Oversize
	112-0176-20	2	.020" Oversize
	112-0176-30	2	.030" Oversize
	112-0176-40	2	.040" Oversize
3	112-0117	2	Pin, Piston
4	112-0085	4	Ring, Retaining
5	114-0168	2	Rod Assembly, Connecting
6	BEARING HALF, CONNECTING ROD		
	114-0164	4	Standard
	114-0164-02	4	.002" Undersize
	114-0164-10	4	.010" Undersize
	114-0164-20	4	.020" Undersize
	114-0164-30	4	.030" Undersize
7	114-0170	4	Bushing, Piston Pin
8	805-0012	4	Bolt, Place (Special)

## CRANKSHAFT AND FLYWHEEL



REF. NO.	PART NO.	QTY. USED	PART DESCRIPTION
1	104-1285	1	Crankshaft Kit (Includes all Keys)
2	104-0418	1	Gear, Crankshaft
3	104-0416	1	Washer, Retainer
4	518-0188	1	Ring, Lock
5	104-0448	1	Flywheel Assembly (Includes Ring Gear)
6	104-0423	1	Gear, Ring
7	800-0500	1	Screw, Flywheel Mounting (Special)
8	104-0550	1	Pulley, Flywheel
9	104-0510	1	Guard, Flywheel
10	515-0001	1	Key, Gear to Crankshaft
11	515-0153	1	Key, Flywheel to Crankshaft
12	526-0185	1	Washer, Flat (15/32" ID x 1-1/2" OD x 3/8" Thk)
13	850-0055	1	Washer, Lock - Spring (7/16")
14	800-0054	2	Screw, Cap - Hex Head (3/8-16 x 2")
15	850-0050	2	Washer, Lock - Spring (3/8")
16	515-0006	1	Key, Fan to Crankshaft

## CAMSHAFT



REF. NO.	PART NO.	QTY. USED	PART DESCRIPTION
1	105-0485	1	Camshaft (Includes Center Pin)
2	515-0001	1	Key - Camshaft Gear
3	150-0075	1	Pin, Center
4	105-0205	1	Washer, Thrust
5	105-0218	1	Gear Assembly, Camshaft (Includes Parts Marked *)
6	510-0046	10	Flyball, Governor
7	150-0775	1	Cup, Governor
8	150-0078	1	Ring, Center Pin
9	105-0465	1	*#Gear, Camshaft
10	150-0773	1	*#Plate, Governor Flyball
11	150-1842	1	*#Spacer Kit, Governor Flyball (Includes Mounting Screws)
12	815-0506	3	*Screw, Spacer Mounting (Special)

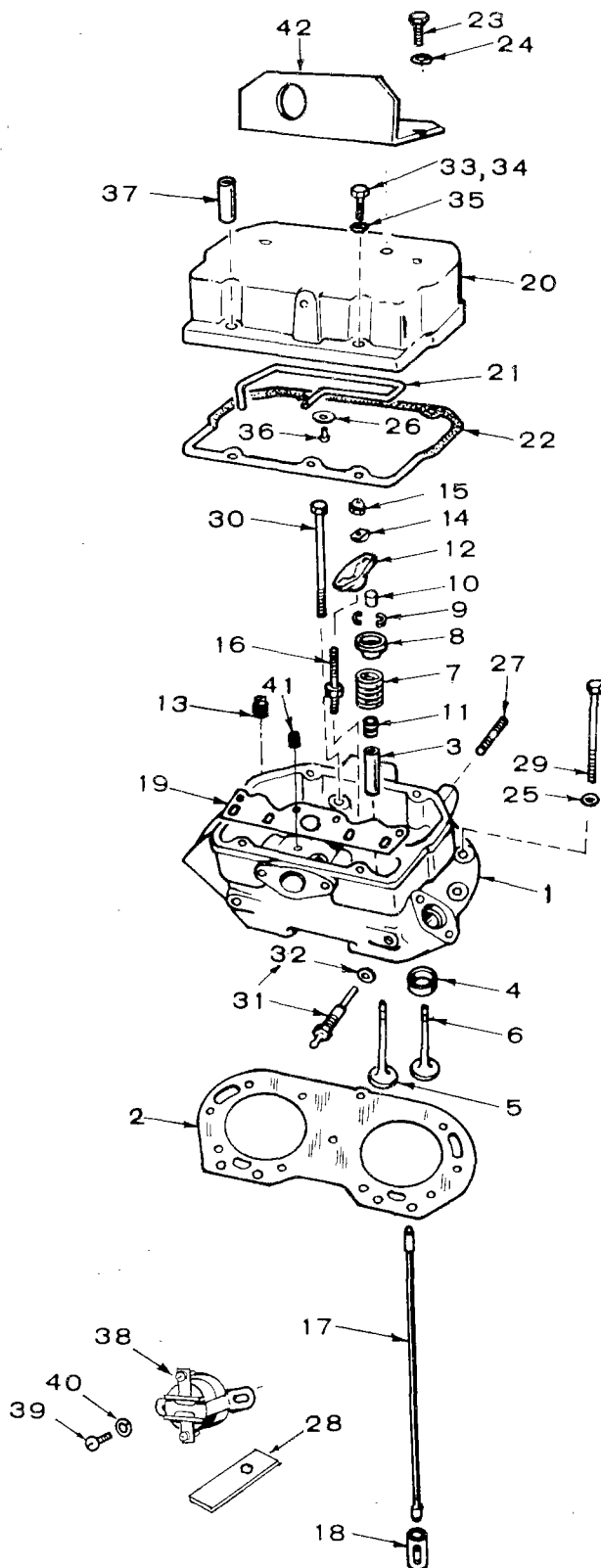
\* - Parts Included in 105-0218 Camshaft Gear Assembly.

# - Camshaft Gear Assemblies With Rivets Order 105-0218  
Camshaft Gear Assembly.



# CYLINDER HEAD

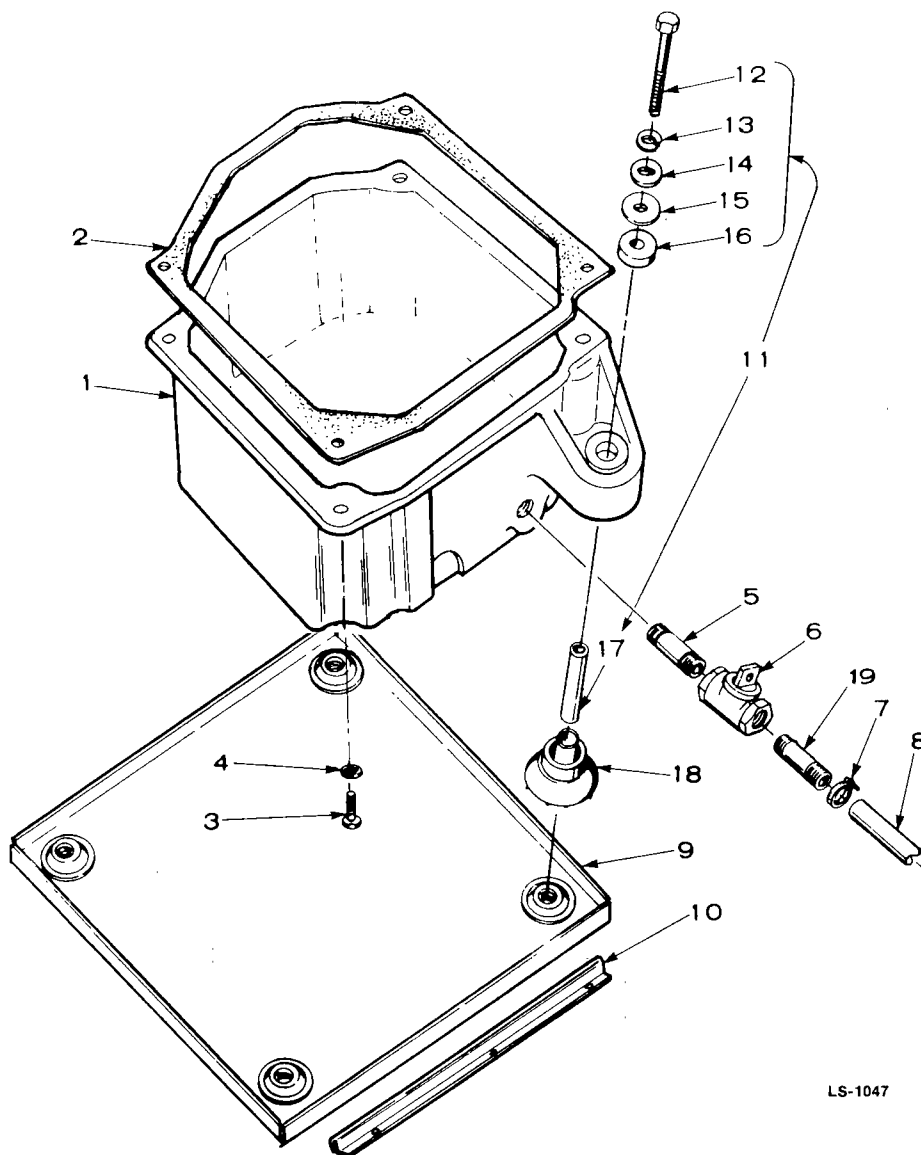
REF. NO.	PART NO.	QTY. USED	PART DESCRIPTION
	403-0707	1	Bracket Kit, Lifting (Includes Parts Marked £)
1	HEAD, CYLINDER		
	110-2986	1	With Valves (Includes Cylinder Head Oil Line Connector and Parts Marked #)
	110-2984	1	#Without Valves (Includes Parts Marked Δ)
2	110-2464	1	Gasket, Cylinder Head
3	110-1501	4	#ΔGuide, Valve
4	INSERT, VALVE SEAT		
	110-1268	4	#ΔStandard
	110-1268-02	4	.002" Oversize
	110-1268-05	4	.005" Oversize
	110-1268-10	4	.010" Oversize
	110-1268-25	4	.025" Oversize
5	110-1871	2	#Valve, Intake
6	110-1278	2	#Valve, Exhaust
7	110-1221	4	#Spring, Valve
8	110-1220	4	#Retainer, Valve Spring
9	110-0858	8	#Lock, Valve Spring Retainer
10	110-0859	4	Cap, Valve Stem
11	509-0132	2	#Seal, Oil - Intake Valve
12	ARM, ROCKER		
	115-0128	2	Exhaust
	115-0129	2	Intake
13	505-0110	1	#ΔPlug, Pipe - Square Head (3/8")
14	115-0127	4	Bali, Rocker Arm
15	115-0150	4	Locknut, Rocker Arm
16	115-0152	4	#Stud, Rocker Arm
17	115-0149	4	Rod, Valve Push
18	115-0195	4	‡Tappet, Valve
19	115-0196	1	#ΔGuide, Push Rod
20	115-0134	1	Cover Assembly, Rocker (Includes Parts Marked *)
21	120-0628	1	*Line, Oil - Rocker Cover
22	115-0130	1	Gasket, Rocker Cover
23	800-0091	1	£Screw, Cap - Hex Head (1/2-13 x 1-1/4")
24	850-0060	1	£Washer, Lock - Spring (1/2")
25	526-0174	7	Washer, Flat (.406" ID x .781" OD x .1345 Thk)
26	526-0130	1	*Washer, Flat (17/64" ID x 1" OD x 1/16" Thk)
27	520-0608	4	#Stud, Exhaust Manifold
28	309-0291	1	Guard, High Temperature Switch
29	800-0501	6	Screw, Cap - Hex Head (Special)
30	110-1264	5	Screw, Cap - Hex Head (Special)
31	PLUG, GLOW (Includes Gasket)		
	333-0106	2	12 Volt
	333-0107	2	24 Volt
32	110-0546	2	Gasket, Glow Plug
33	800-0038	2	£Screw, Cap - Hex Head (5/16-18 x 3-1/4")
34	800-0030	2	Screw, Cap - Hex Head (5/16-18 x 1-1/4")
35	850-0045	4	Washer, Lock - Spring (5/16")
36	815-0562	1	*Screw, Pan Head - Cross Recessed (#10 x 5/16")
37	403-0826	2	£Spacer, Lifting Bracket
38	309-0156	1	Switch, High Temperature
39	813-0096	2	Screw, Machine - Round Head (#10-32 x 1/4")
40	850-0030	2	Washer, Lock - Spring (#10)
41	505-0274	1	#ΔPlug, Pipe - Countersunk Hex Head (1/8")
42	403-0825	1	£Bracket, Lifting



£ - Parts Included in 403-0707 Lifting Bracket Kit  
 # - Parts Included in 110-2986 Cylinder Head  
 Δ - Parts Included in 110-2984 Cylinder Head  
 \* - Parts Included in 115-0134 Rocker Cover Assembly  
 ‡ - Parts Included in 110-2693 Cylinder Block Assembly

C-1054

## OIL BASE



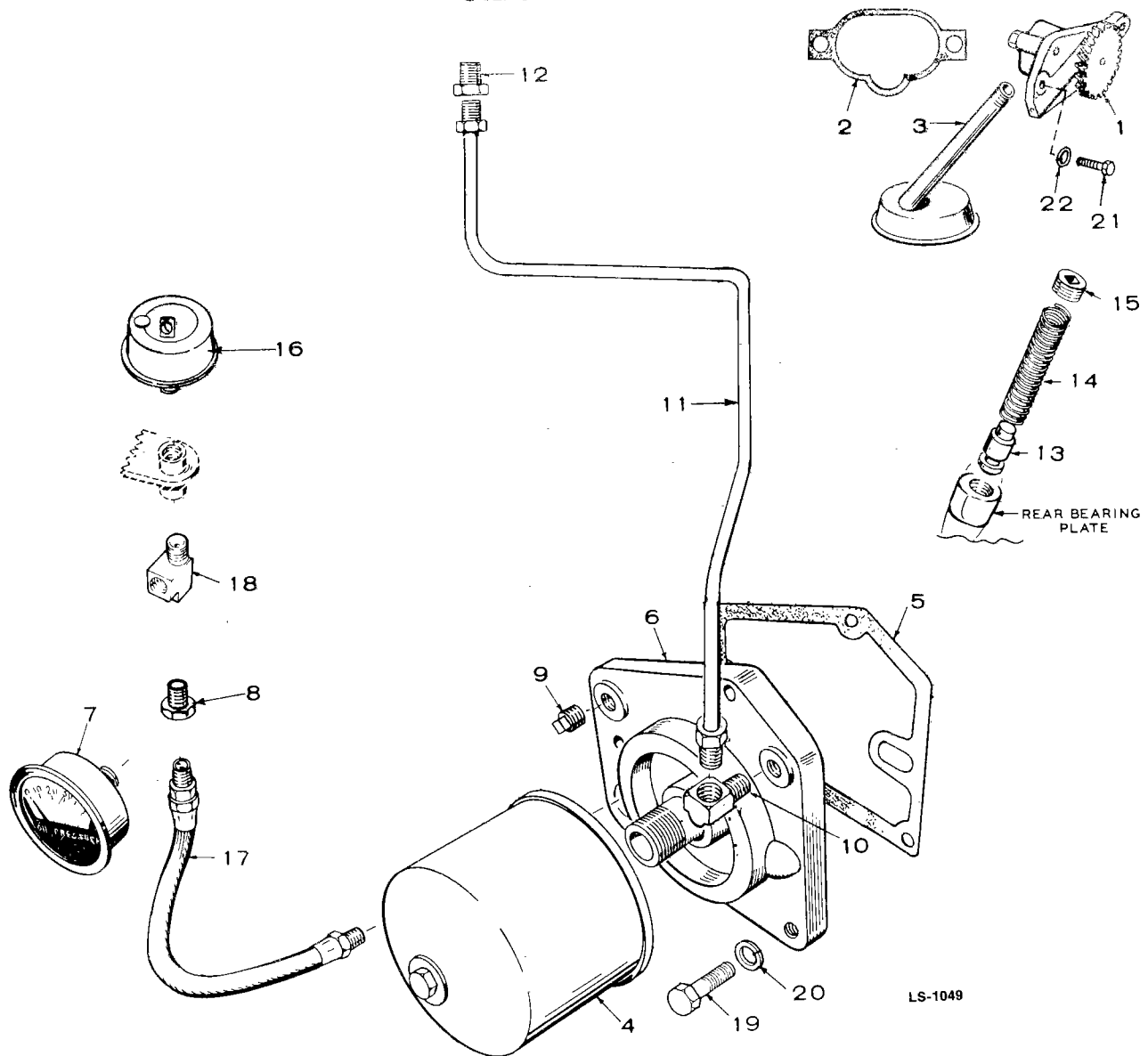
LS-1047

REF. NO.	PART NO.	QTY. USED	PART DESCRIPTION
1	102-0540	1	Base, Oil
2	102-0451	1	Gasket, Oil Base
3	800-0072	4	Screw, Cap - Hex Head (7/16-14 x 1-1/4")
4	850-0055	4	Washer, Lock - Spring (7/16")
5	505-0078	1	Nipple, Pipe (1/2" x 2-1/2")
6	504-0011	1	Valve, Oil Drain
7	503-0197	1	Clamp, Hose
8	503-0316	1	Hose, Oil Drain
9	405-1402	1	Pan, Drip
10	405-1265	2	Clamp, Drip Pan
11	402-0360	4	Hardware Package, Mounting (Includes Parts Marked *)

REF. NO.	PART NO.	QTY. USED	PART DESCRIPTION
12	800-0081	4	*Screw, Cap - Hex Head (7/16-14 x 3-1/2")
13	850-0055	4	*Washer, Lock - Spring (7/16")
14	526-0128	4	*Washer, Flat (15/32" ID x 1-1/2" OD x 1/4" Thk)
15	526-0198	8	*Washer, Flat (5/8" ID x 1-1/2" OD x 1/16" Thk) (Use as Required)
16	402-0282	4	*Snubber, Cushion Mounting
17	402-0290	4	*Bushing, Spacer
18	CUSHION, VIBRATION		
	402-0284	2	Engine End
	402-0285	2	Generator End
19	505-0100	1	Nipple, Close - Pipe (1/2")

\* - Parts Included in 402-0360 Mounting Hardware Package.

# OIL SYSTEM



LS-1049

REF. NO.	PART NO.	QTY. USED	PART DESCRIPTION
1	120-0547	1	Pump, Oil
2	120-0580	1	Gasket Kit, Oil Pump
3	120-0551	1	Cup, Oil Pump Intake
4	FILTER, OIL		
	122-0185	1	Standard (4-3/8")
	122-0193	1	Heavy Duty (5-3/4")
5	122-0188	1	Gasket, Filter Adapter
6	122-0182	1	Adapter, Oil Filter
7	193-0006	1	Gauge, Oil Pressure
8	502-0003	1	Connector, Tee to Oil Line
9	505-0057	1	Plug, Pipe - Square Head (1/8")
10	502-0037	1	Elbow, Oil Line to Adapter
11	120-0622	1	Line, Oil - Injector Pump Tee to Cylinder Head
12	502-0281	1	Connector, Oil Line to Cylinder Head (Included in Replacement Cylinder Head with Valves)

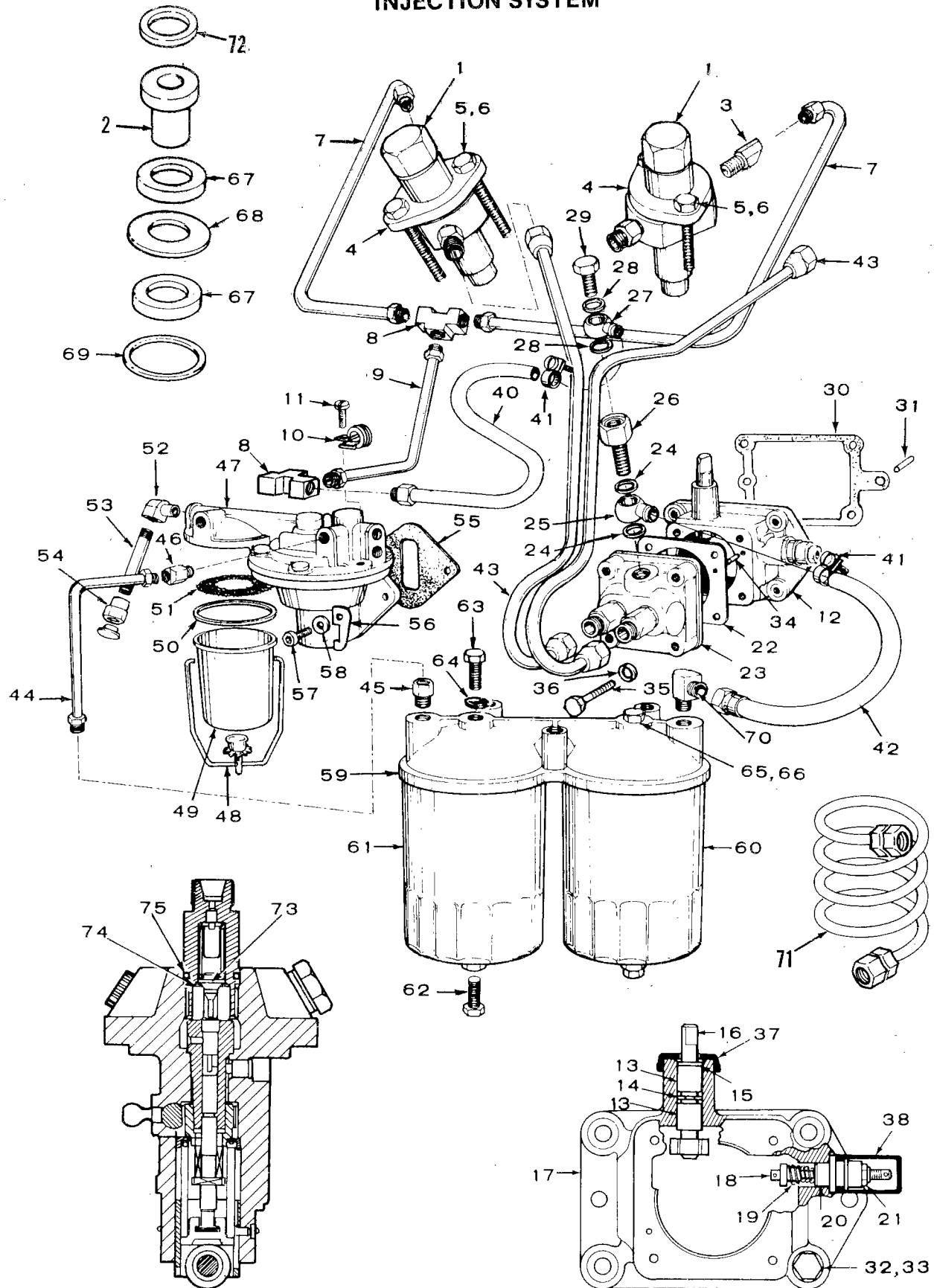
REF. NO.	PART NO.	QTY. USED	PART DESCRIPTION
13	120-0539	1	Valve, Oil By-Pass
14	120-0555	1	Spring, By-Pass Valve
15	505-0274	1	Plug, Pipe - Countersunk (1/8") Oil By-Pass
16	309-0169	1	Switch, Low Oil Pressure
17	501-0003	1	Line, Oil
18	502-0058	1	Tee, Oil Gauge Mounting
19	800-0028	3	Screw, Cap - Hex Head (5/16-18 x 1")
20	850-0045	3	Washer, Lock - Spring (5/16")
21	800-0030	2	Screw, Cap - Hex Head (5/16-18 x 1-1/4")
22	850-0045	2	Washer, Lock - Spring (5/16")

This exploded view diagram illustrates the components of a vehicle's rear window assembly. The parts are numbered as follows:

- 1**: Rear window frame or housing.
- 2**: A circular gasket or seal.
- 3**: A small pin or clip.
- 4**: A small circular washer or spacer.
- 5**: The main rear window glass panel.
- 6**: A secondary glass panel or a protective film.
- 7**: A screw used for mounting.
- 8**: A small circular washer or spacer.
- 9**: A curved rubber weatherstripping seal.
- 10**: A small circular gasket or seal.
- 11**: A cable or hose connector.
- 12**: A cable or hose with a connector.
- 13**: A cable or hose.
- 14**: A circular gasket or seal.
- 15**: A small circular washer or spacer.
- 16**: A screw used for mounting.
- 17**: A screw used for mounting.
- 18**: A screw used for mounting.
- 19**: A cylindrical component, possibly a vent or a sensor housing.
- 20**: A cylindrical component, possibly a vent or a sensor housing.
- 21**: A ring or flange used for sealing.
- 22**: A cylindrical component, possibly a vent or a sensor housing.

9

# INJECTION SYSTEM



FS-1209

# INJECTION SYSTEM

REF. NO.	PART NO.	QTY. USED	PART DESCRIPTION	REF. NO.	PART NO.	QTY. USED	PART DESCRIPTION
	147-0389	1	Kit, Bearing and Seal Replacement - For Injection Pump Mounting Adapter Assembly (Includes Parts Marked †)	43	LINE, FUEL INJECTION - INJECTION PUMP TO NOZZLE		
					149-1512	1	No. 1 Cylinder
	149-1046	1	Repair Kit, Fuel Pump		149-1513	1	No. 2 Cylinder
1	147-0378	2	Nozzle and Holder Assembly (Includes Parts Marked *)	44	149-1190	1	Line, Fuel - Fuel Pump to Filter
				45	502-0003	1	Connector, Pipe
2	147-0377	2	*Nozzle (Includes 147-0243 Gasket)	46	502-0065	2	Elbow, Inverted - Brass (45°)
				47	149-1703	1	Pump, Fuel (Includes Parts Marked □)
3	502-0065	2	Elbow, Inverted (45°)	48	BAIL, FUEL PUMP		
4	147-0141	2	Flange, Injection Nozzle		149-1006	1	Sets With Long (2-3/8") Fuel Pump Bowl
5	114-0171	4	Screw, Cap - Hex Head				
6	526-0122	4	Washer, Flat (11/32" ID x 23/32" OD x 10 Ga. Thk)		149-1169	1	#□Sets With Short (1-5/8") Fuel Pump Bowl
7	LINE, NOZZLE FUEL RETURN			49	BOWL, FUEL PUMP		
	149-1509	1	No. 1 Cylinder		149-1964	1	Replacement Kit for Sets with Long (2-3/8") Fuel Pump Bowl (Includes Parts Marked #)
	149-1508	1	No. 2 Cylinder				
8	502-0102	2	Tee, Fuel Return Line		149-1620	1	#□Sets with Short (1-5/8") Fuel Pump Bowl
9	149-1510	1	Line, Fuel Return				
10	332-2050	2	Clamp, Fuel Line	50	149-0517	1	□Gasket, Fuel Pump Bowl
11	804-0018	2	Screw, Cap - Socket Head (#10-32 x 5/8")	51	149-0463	1	□Screen, Fuel Pump Bowl
				52	502-0020	1	Elbow, Fuel Pump Inlet
12	147-0338	1	Adapter Assembly, Injection Pump Mounting (Includes Parts Marked £)	53	505-0061	1	Nipple, Pipe (1/8" x 2")
				54	502-0017	1	Connector, Fuel Line
13	510-0120	2	£†Bearing, Needle Roller	55	149-0792	1	□Gasket, Fuel Pump Mounting
14	518-0372	1	£†Ring, External Retaining	56	149-1307	2	□Washer, Fuel Pump Mounting
15	509-0144	1	£†Seal, Bonded Shaft	57	802-0054	2	□Screw, Cap - Socket Head (5/16-18 x 7/8")
16	147-0339	1	£Shaft & Yoke Assembly, Injection Pump	58	850-0045	2	Washer, Lock - Spring (5/16")
				59	149-1185	1	Adapter, Fuel Filter
17	147-0337	1	£Adapter, Injection Pump Mounting	60	122-0326	1	Filter, Secondary Fuel
				61	122-0325	1	Filter, Primary Fuel
18	147-0335	1	£Plunger, Fuel Injection	62	502-0080	2	Plug, Pipe - Fuel Filter Drain
19	147-0344	1	£Spring, Fuel Injection Plunger	63	801-0074	1	Screw, Cap - Hex Head (7/16-20 x 1-3/4")
20	147-0345	1	£Guide, Fuel Injection Plunger				
21	870-0328	1	£Nut, Elastic Stop	64	526-0068	1	Washer, Flat (29/64" ID x 3/4" OD x 1/16" Thk)
22	147-0388	1	Shim Kit, Fuel Injection Pump				
23	147-0355	1	Pump Assembly, Fuel Injection (Includes Parts Marked **)	65	801-0053	1	Screw, Cap - Hex Head (3/8-24 1-3/4")
				66	526-0066	1	Washer, Flat (25/64" ID x 9/16" OD x 1/16" Thk)
24	147-0356	2	**Washer, Hollow Screw Mounting				
25	147-0354	1	**Eye, Fitting (Fuel Inlet)	67	147-0044	4	Shield, Nozzle Heat
26	147-0353	1	**Screw, Hollow	68	147-0043	2	Gasket, Nozzle Heat Shield
27	147-0352	1	**Eye, Fitting (Fuel Return)	69	110-0419	2	Gasket, Shield to Head
28	147-0357	2	**Washer, Hollow Screw Mounting	70	502-0099	1	Elbow, Reducing - Brass
29	147-0351	1	**Screw, Hollow	71	501-0242	2	Line, Fuel
30	147-0322	1	Gasket, Mounting	72	147-0243	2	*Gasket, Nozzle
31	516-0141	2	Pin, Alignment - Fuel Injection Pump Adapter	73	VALVE, DELIVERY		
					147-0550	2	Used with Bryce Pumps
32	802-0054	4	Screw, Cap - Socket Head (5/16-18 x 7/8") Adapter Mounting		147-0551	2	Used with Kiki Pumps
				74	GASKET, DELIVERY VALVE		
33	850-0045	4	Washer, Lock - Spring (5/16") Adapter Mounting		147-0553	2	Used with Bryce Pumps
					147-0552	2	Used with Kiki Pumps
34	516-0187	2	Pin, Alignment - Fuel Injection Pump (Used with Bryce Pumps)	75	147-0554	2	"O" Ring - Used with Bryce Pumps
35	802-0054	4	Screw, Cap - Socket Head Fuel Injection Pump Mounting (5/16-18 x 7/8" long)				
36	850-0045	4	Washer, Lock - Spring - Fuel Injection Pump Mounting (5/16)				
37	147-0350	1	Cover, Yoke and Shaft Assembly				
38	147-0346	1	Cover, Plunger				
40	501-0222	1	Line, Fuel - Bleeder Line to Tee				
41	503-0685	2	Clamp, Hose				
42	501-0223	1	Line, Fuel - Filter to Injection Pump				

† - Parts Included in 147-0389 Bearing and Seal Replacement Kit.

\* - Parts Included in 147-0378 Nozzle and Holder Assembly.

£ - Parts Included in 147-0338 Fuel Injection Adapter Assembly.

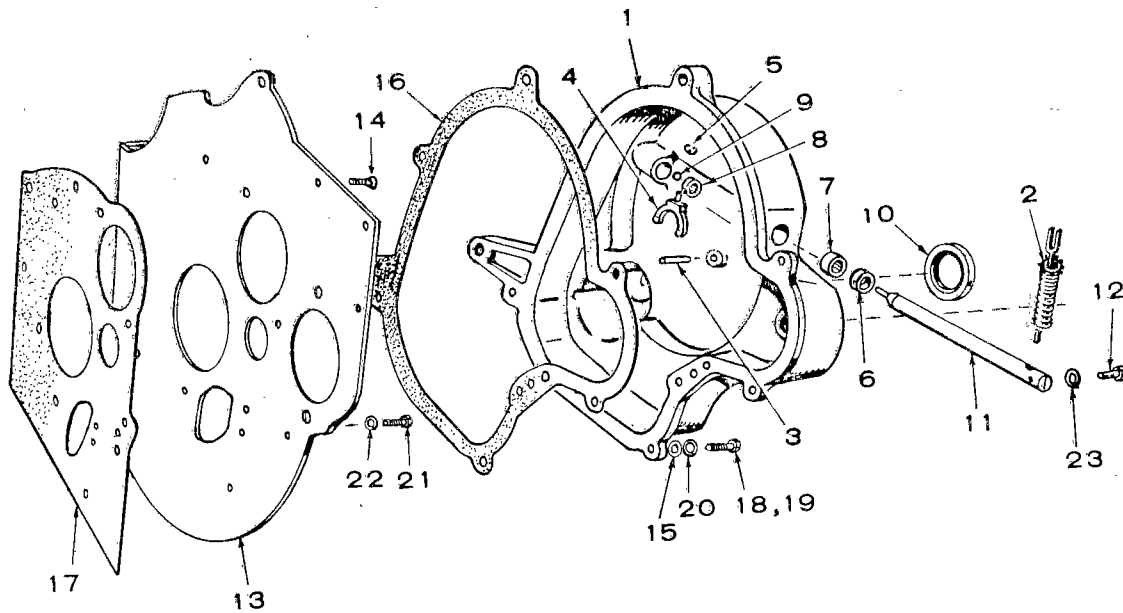
\*\* - Parts Included in 147-0355 Fuel Injection Pump Assembly.

□ - Parts Included in 149-1703 Fuel Pumps.

# - Parts Included in 149-1964 Fuel Pump Bowl Replacement Kit.

† - Parts Included in 147-0389 Bearing and Seal Replacement Kit.  
 \* - Parts Included in 147-0378 Nozzle and Holder Assembly.  
 £ - Parts Included in 147-0338 Fuel Injection Adapter Assembly.  
 \*\* - Parts Included in 147-0355 Fuel Injection Pump Assembly.  
 □ - Parts Included in 149-1703 Fuel Pumps.  
 # - Parts Included in 149-1964 Fuel Pump Bowl Replacement Kit.

# GEARCASE

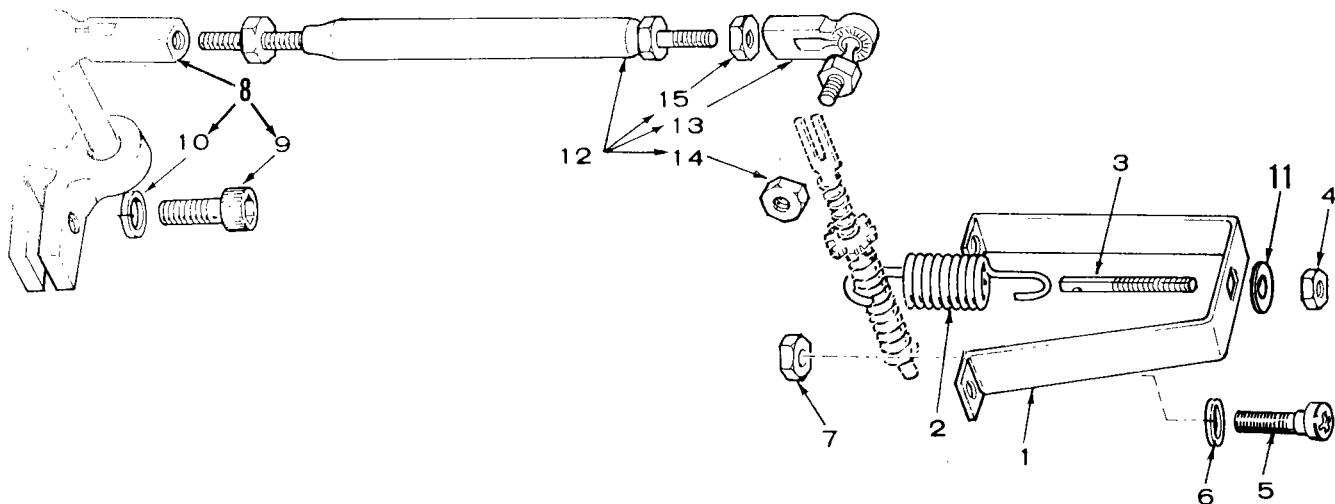


C-1025

REF. NO.	PART NO.	QTY. USED	PART DESCRIPTION
1	103-0277	1	Gearcase Assembly (Includes Parts Marked *)
2	150-1605	1	Arm, Governor
3	516-0111	1	*Pin, Governor Cup Stop
4	150-0777	1	*Yoke, Governor
5	518-0129	1	*Ring, Yoke Retaining
6	509-0088	1	*Seal, Governor Shaft
7	510-0048	1	*Bearing, Shaft - 1/2" Shaft
8	510-0082	1	*Bearing, Shaft - 1/4" Shaft
9	510-0043	1	*Ball, Governor Shaft Thrust
10	509-0087	1	*Seal, Oil
11	150-0838	1	*Shaft, Governor
12	815-0176	1	*Screw, Machine-Hex Head (#8-32 x 1/2")
13	103-0228	1	Backplate, Gearcase
14	815-0347	2	Screw, Machine - Flat Head - Socket Drive (1/4-20 x 1/2")
15	526-0115	5	Washer, Flat (11/32" ID x 11/16" OD x 1/16" Thk)
16	103-0251	1	Gasket, Gearcase
17	103-0218	1	Gasket, Backplate
18	110-0879	4	Screw, Cap - Hex Head (Special)
19	800-0028	1	Screw, Cap - Hex Head (5/16-18 x 1")
20	850-0045	5	Washer, Lock - Spring (5/16)
21	800-0026	1	Screw, Cap - Hex Head (5/16-18 x 3/4")
22	850-0045	1	Washer, Lock - Spring (5/16)
23	850-0025	1	*Washer, Lock - Spring (#8)

\* - Parts Included in 103-0277 Gearcase Assembly.

# GOVERNOR



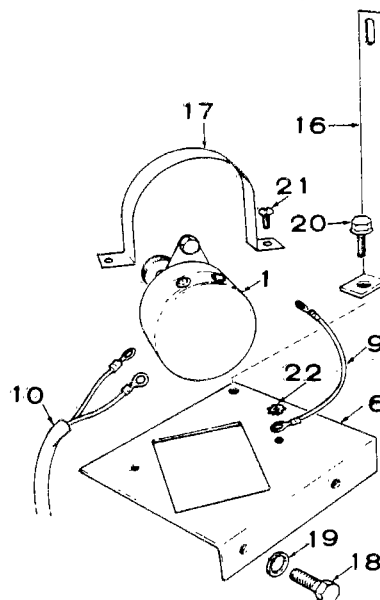
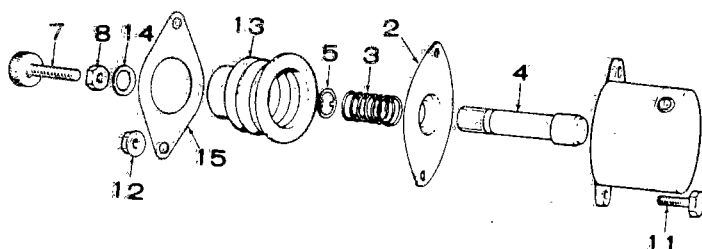
FS-1210

REF. NO.	PART NO.	QTY. USED	PART DESCRIPTION
1	150-1628	1	Bracket, Governor Spring
2	150-1084	1	Spring, Governor
3	150-1082	1	Stud, Governor Spring
4	862-0003	1	Nut, Governor Spring
5	815-0482	1	Screw, Machine - Fillister Head - Cross Recessed (3/8-16 x 1-3/4")
6	850-0050	1	Washer, Lock - Spring (3/8")
7	864-0003	1	Nut, Hex - Jam (3/8-16)
8	150-1603	1	Post and Arm Assembly (Includes Screw and Washer)
9	804-0018	1	Screw, Cap - Socket Head (#10-32 x 5/8")
10	850-0030	1	Washer, Lock - Spring (#10)
11	526-0030	1	Washer, Flat (13/32" ID x 7/8" OD x 1/8" Thk)
12	150-1610	1	Linkage Assembly, Governor (Includes Parts Marked *)
13	150-0939	1	*Joint, Ball
14	870-0131	1	*Nut, Hex - ET (#10-32)
15	871-0010	2	*Nut, Hex - Brass (#10-32)

\* - Parts Included in 150-1610 Governor Linkage Assembly.



# **STOP SOLENOID** (PRIOR TO SERIAL NUMBER D810555279 DURING SPEC AD)

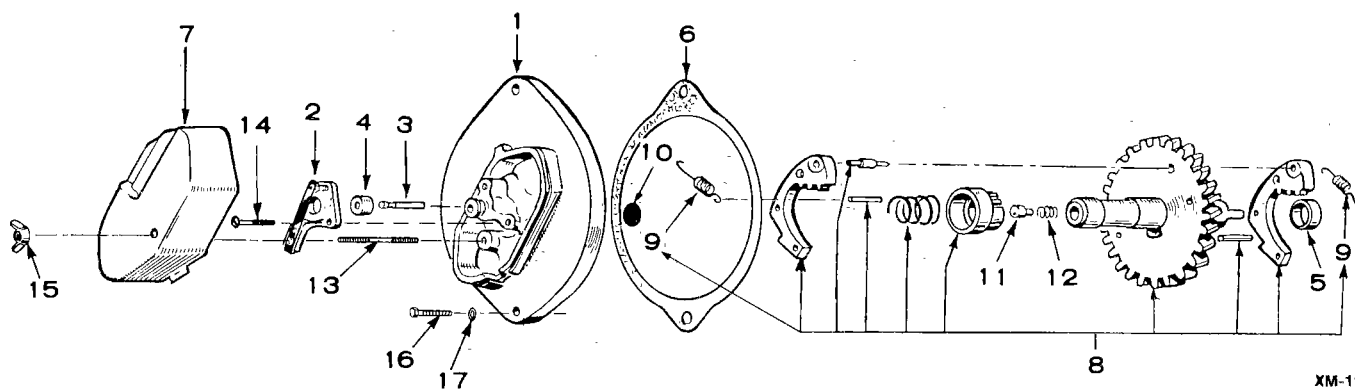


FS-1212

REF. NO.	PART NO.	QTY. USED	PART DESCRIPTION
1	SOLENOID KIT, STOP (Complete Replacement)		
	307-2026	1	12 Volt
	307-2027	1	24 Volt
2	306-0162	1	Retainer, Solenoid Plunger
3	306-0611	1	Spring, Solenoid Plunger
4	306-0612	1	Plunger, Solenoid
5	518-0203	1	Ring, Snap - Spring Retaining
6	306-0665	1	Bracket, Solenoid
7	306-0242	1	Screw, Solenoid Adjusting
8	862-0001	1	Nut, Hex (1/4-20)
9	336-0706	1	Lead, Electrical - Solenoid Ground
10	338-0258	1	Harness, Wiring - Switch to Control
11	800-0003	2	Screw, Cap - Hex Head (1/4-20 x 1/2" lg)
12	870-0212	2	Nut, Self Locking (1/4-20)
13	306-0789	1	Bellows, Solenoid Plunger
14	518-0218	1	Ring, External Retaining

REF. NO.	PART NO.	QTY. USED	PART DESCRIPTION
15	306-0667	1	Plate, Retaining Boot
16	307-1591	1	Brace, Solenoid Mounting
17	307-1605	1	Bracket, Solenoid Mounting
18	800-0544	2	Screw, Cap - Hex Head
19	850-0040	2	Washer, Lock - Spring
20	821-0010	1	Screw, Hex Locking Head (Flange) (1/4-20 x 1/2")
21	812-0150	2	Screw, Machine - Round Head (1/4-20 x 5/8" lg)
22	853-0013	1	Washer, Lock - External (1/4")

## **START DISCONNECT**

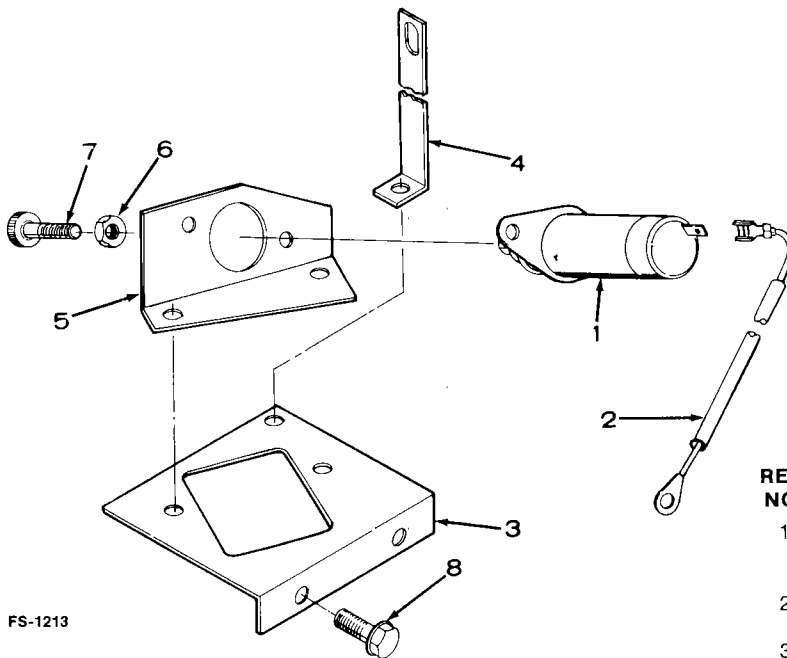


XM-1138

REF. NO.	PART NO.	QTY. USED	PART DESCRIPTION
1	191-0496	1	Plate
2	309-0134	1	Switch Assembly (Includes Leads)
3	309-0152	1	Plunger, Switch
4	160-0382	1	Diaphragm, Switch Plunger
5	160-0720	1	Spacer, Switch Plate
6	160-0721	1	Gasket, Plate
7	191-0392	1	Cover, Switch Plate
8	191-0388	1	Control Assembly, Switch
9	160-0711	2	Spring, Weight (Included in Switch Control Assembly)

REF. NO.	PART NO.	QTY. USED	PART DESCRIPTION
10	160-0806	1	Disc, Thrust Plunger
11	160-0774	1	Plunger, Thrust
12	160-0773	1	Spring, Thrust Plunger
13	520-0347	1	Stud, Plate Cover (Special)
14	815-0201	2	Screw, Machine - Brass - Round Head with ET (#8-32 x 3/8")
15	865-0011	1	Nut, Wing (#10-32)
16	800-0052	2	Screw, Cap - Hex Head (3/8-16 x 1-1/2")
17	850-0050	2	Washer, Lock - Spring (3/8")

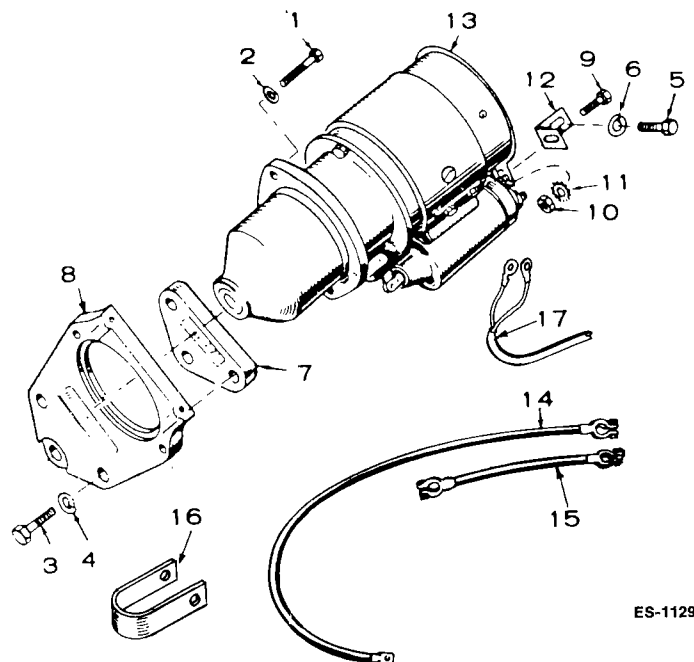
# **STOP SOLENOID** **(BEGIN SERIAL NUMBER D810555280 DURING SPEC AD)**



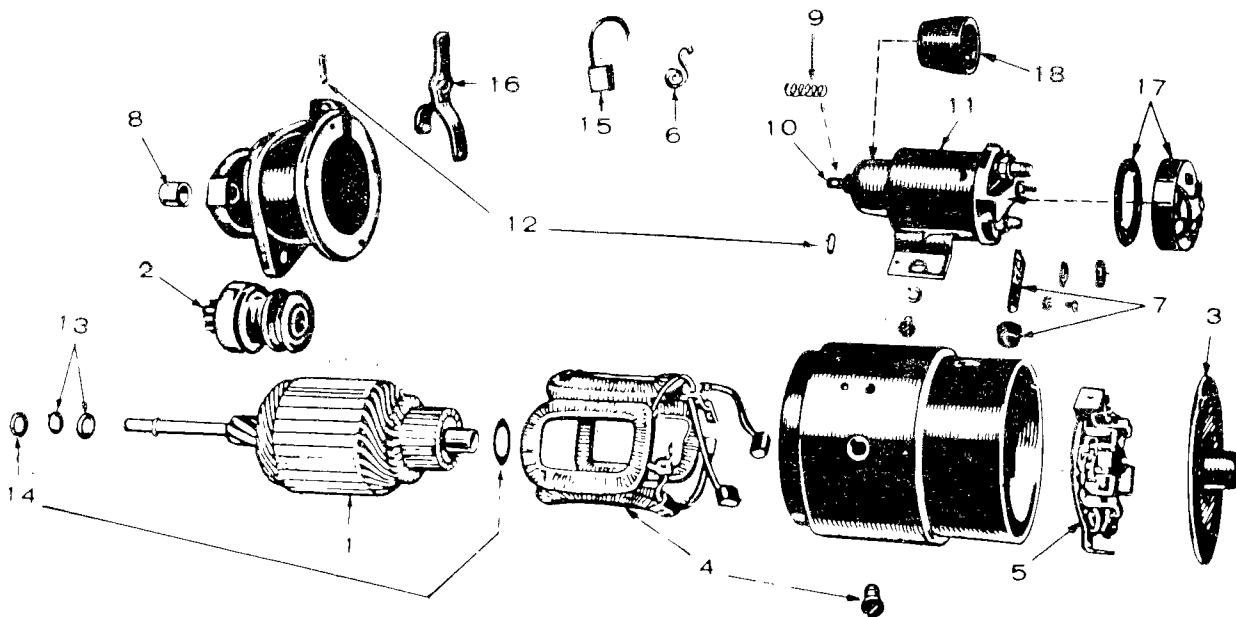
REF. NO.	PART NO.	QTY. USED	PART DESCRIPTION
1	SOLENOID, STOP		
	307-1904	1	12 Volt
	307-1930	1	24 Volt
2	336-7289	1	Lead-Solenoid to High Temperature Switch
3	306-0665	1	Bracket, Solenoid Mounting
4	307-1591	1	Brace, Solenoid Bracket
5	306-2255	1	Bracket, Solenoid
6	862-0001	1	Nut, Hex (1/4-20)
7	306-2256	1	Screw, Solenoid Adjusting
8	821-0010	5	Screw, Hex Locking Head (Flange) (1/4-20 x 1/2")

# **STARTER (PRESTOLITE)**

REF. NO.	PART NO.	QTY. USED	PART DESCRIPTION
1	800-0051	2	Screw, Cap - Hex Head (3/8-16 x 1-1/4")
2	850-0050	2	Washer, Lock - Spring (3/8")
3	SCREW, CAP - HEX HEAD		
	800-0053	1	3/8-16 x 1-3/4"
	800-0054	2	3/8-16 x 2"
4	850-0050	3	Washer, Lock - Spring (3/8")
5	800-0052	1	Screw, Cap - Hex Head (3/8-16 x 1-1/2")
6	850-0050	1	Washer, Lock - Spring (3/8")
7	191-0311	1	Spacer, Starter
8	191-1190	1	Flange, Starter
9	800-0046	1	Screw, Cap - Hex Head (3/8-16 x 1/2")
10	864-0003	1	Nut, Hex (3/8-16)
11	856-0010	1	Washer, Lock - External/Internal Tooth (3/8")
12	191-0365	1	Bracket, Starter
13	STARTER (See Separate Page for Components)		
	191-0324	1	12 Volt DC Sets
	191-0443	1	24 and 32 Volt DC Sets
	191-0443	1	Begin Spec AE - 24 and 32 Volt DC Sets
14	416-0021	2	Cable, Battery
15	416-0133	1	Cable, Battery Jumper
16	416-0096	1	Clamp, Battery Cable
17	338-0279	1	Harness, Wiring



# STARTER PARTS (PRESTOLITE)

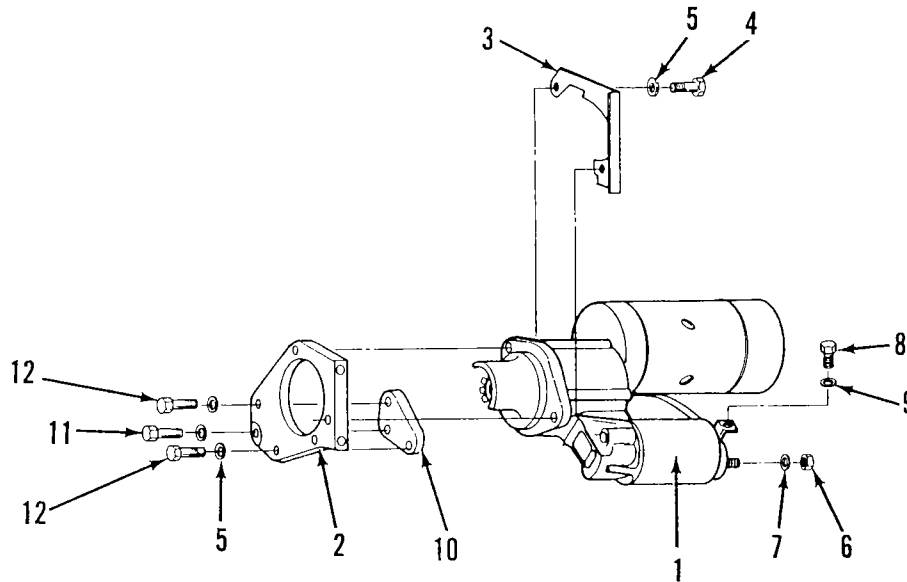


ES-1098

REF. NO.	PART NO.	QTY. USED	PART DESCRIPTION
	STARTER		
	191-0324	1	12 Volt DC Sets
	191-0443	1	24 and 32 Volt DC Sets
1	ARMATURE		
	191-0712	1	12 Volt DC Sets
	191-0713	1	24 and 32 Volt DC Sets
2	191-0432	1	Clutch
3	191-1023	1	Head Assembly, Commutator End
4	COIL PACKAGE, FIELD		
	191-1024	1	12 Volt DC Sets
	191-1043	1	24 and 32 Volt DC Sets
5	PLATE ASSEMBLY, BRUSH		
	191-1025	1	12 Volt DC Sets
	191-1042	1	24 and 32 Volt DC Sets
6	191-1020	1	Spring Set, Brush (Set of 4)
7	191-1263	1	Connector Package
8	191-0497	1	Bearing (Bronze), Drive End

REF. NO.	PART NO.	QTY. USED	PART DESCRIPTION
9	191-1027	1	Spring, Plunger
10	191-1028	1	Core Assembly, Moving
11	SWITCH, SOLENOID		
	191-0433	1	12 Volt DC Sets
	191-0715	1	24 and 32 Volt DC Sets
12	191-1029	1	Parts Package, Yoke
13	191-1030	1	Stop and Lock Ring Package, Pinion
14	191-1031	1	Thrust Washer Package, Armature (Use as Required)
15	BRUSH SET, SERVICE		
	191-0434	1	12 Volt DC Sets
	191-0714	1	24 and 32 Volt DC Sets
16	191-1032	1	Yoke
17	191-0468	1	Cover, Solenoid
18	191-1134	1	Boot, Rubber - Part of Moving Core Assembly

## STARTER (MITSUBISHI)

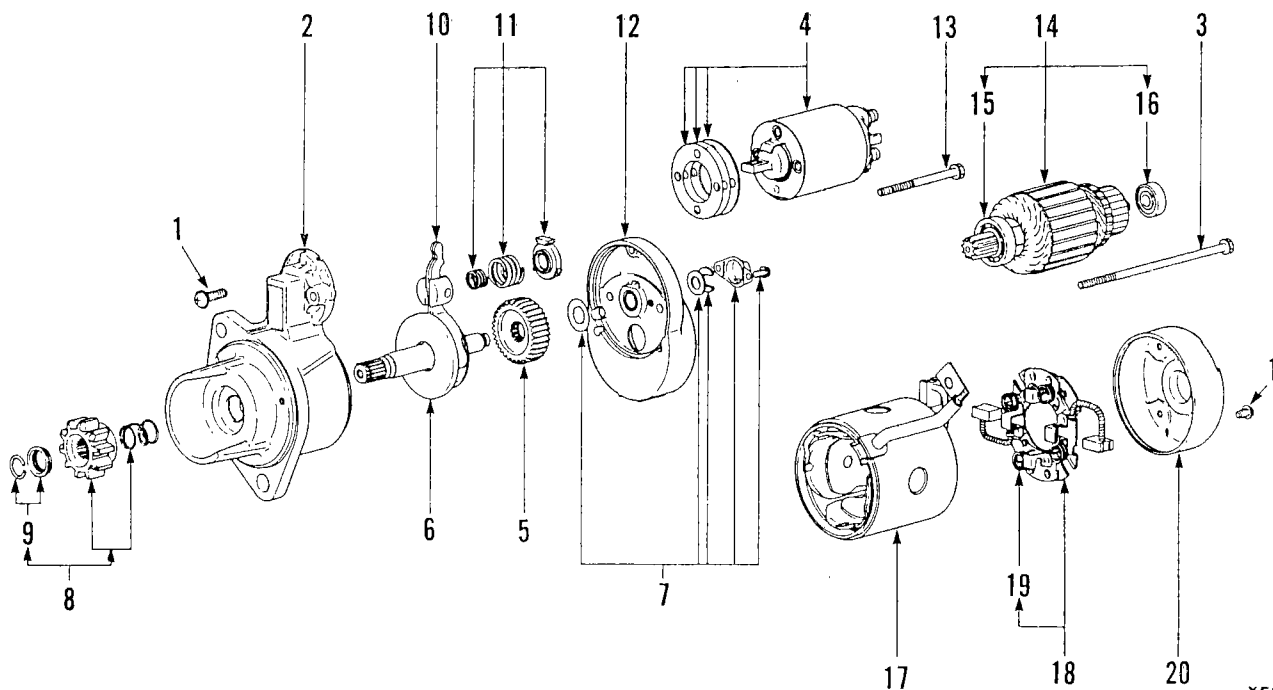


X ES-1359

REF. NO.	PART NO.	QTY. USED	PART DESCRIPTION
1	191-1398	1	Starter - Begin Spec AE - 12 Volt DC Sets (See Separate Page for Components) (Includes Parts Marked *)
2	191-1400	1	Flange, Starter Mounting
3	134-4154	1	Baffle, Starter
4	800-0051	2	Screw, Cap - Hex Head (3/8-16 x 1-1/4")
5	850-0050	5	Washer, Lock - Spring (3/8")
6	860-2008	1	*Nut, Hex (M8) B+ Terminal
7	850-2008	1	*Washer, Lock - Spring (M8) B+ Terminal
8	800-2000	1	*Screw, Cap - Hex Head (M5 x 8MM) Solenoid Terminal
9	850-2005	1	*Washer, Lock - Spring (M5) Solenoid Terminal
10	191-0311	1	Spacer, Flange
11	800-0053	1	Screw, Cap - Hex Head (3/8-16 x 1-3/4")
12	800-0054	2	Screw, Cap - Hex Head (3/8-16 x 2")

\* - Parts Included With 191-1398 Starter

## STARTER PARTS (MITSUBISHI)



XES-1360

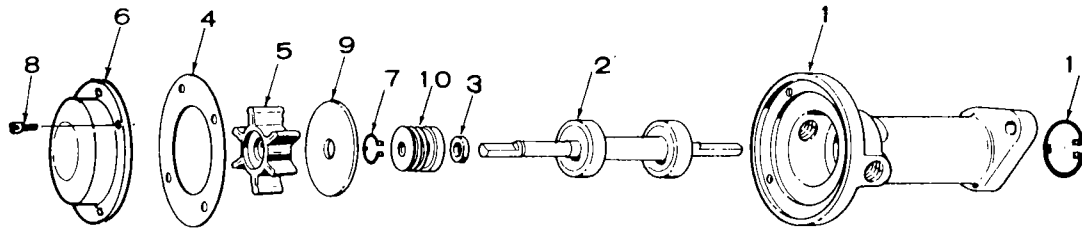
REF. NO.	PART NO.	QTY. USED	PART DESCRIPTION
	191-1398	1	Starter (12 Volt DC Sets)
1	191-1458	1	Screw Set
2	191-1459	1	Bracket, Front - Includes Bearing
3	191-1477	1	Bolt, Through
4	191-1478	1	Switch
5	191-1462	1	Gear
6	191-1463	1	Clutch
7	191-1464	1	Cover Set
8	191-1465	1	Pinion Set (Includes Parts Marked *)
9	191-1466	1	*Stopper Set
10	191-1467	1	Lever
11	191-1468	1	Spring Set
12	191-1469	1	Bracket, Center
13	191-1470	1	Bolt, Through
14	191-1471	1	Armature Assembly (Includes Parts Marked #)
15	191-1472	1	#Bearing, Center
16	191-1473	1	#Bearing, Rear
17	191-1474	1	Yoke - Includes Pole Shoes, Field Coil and Positive Brushes
18	191-1475	1	Holder Assembly, Brush (Includes Negative Brushes and Parts Marked ‡)
19	191-1007	4	‡Spring, Brush
20	191-1476	1	Bracket, Rear

\* - Parts Included in 191-1465 Pinion Set

# - Parts Included in 191-1471 Armature Assembly

‡ - Parts Included in 191-1475 Brush Holder Assembly

## WATER PUMP PARTS (131-0257)



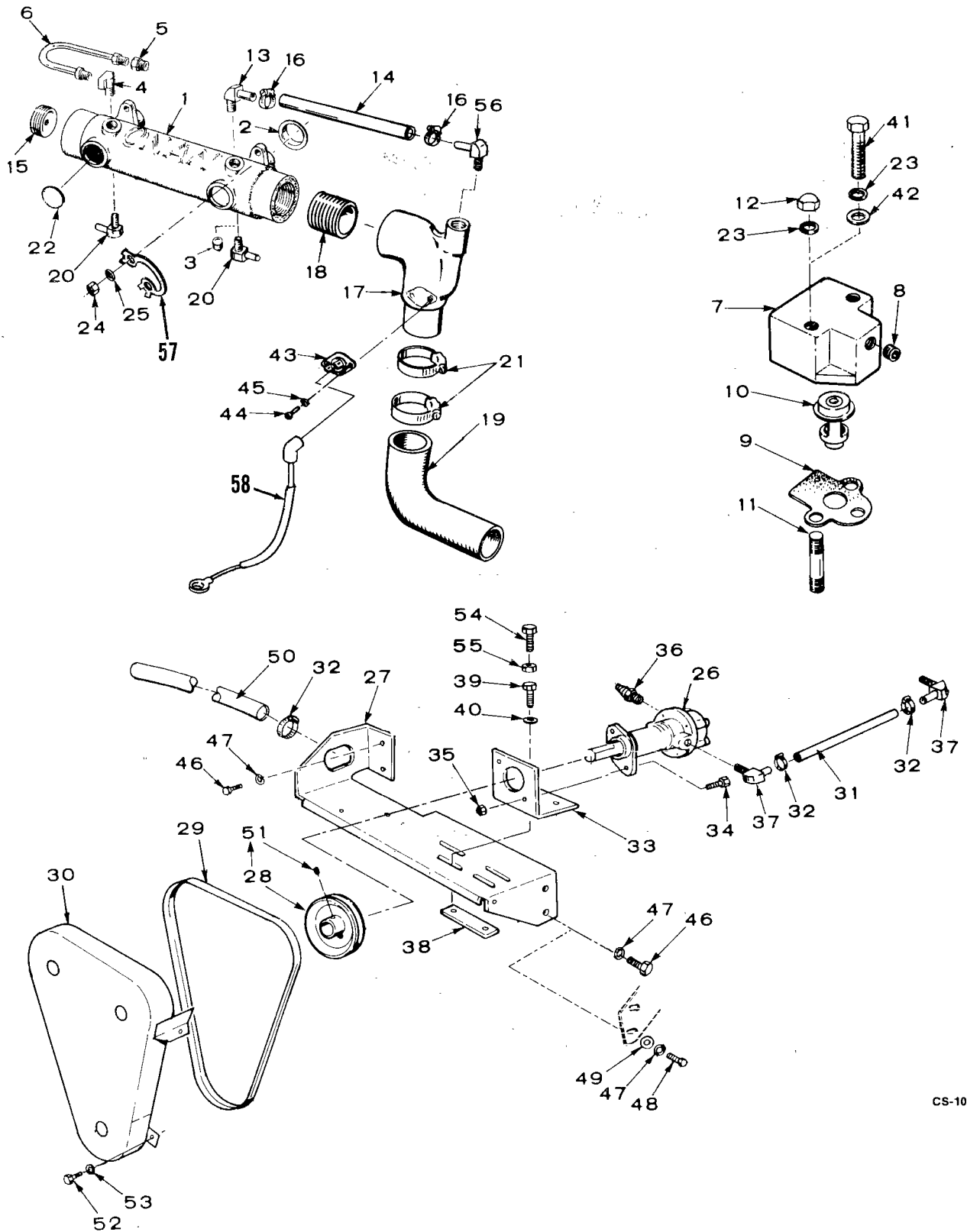
CS-1090

REF. NO.	PART NO.	QTY. USED	PART DESCRIPTION
	131-0257	1	Pump, Water
	131-0258	1	Repair Kit, Water Pump - Includes Parts Marked *
1	131-0212	1	Body
2	131-0222	1	*Shaft
3	131-0219	1	*Slinger
4	131-0210	1	*Gasket
5	131-0218	1	*Impeller
6	132-0229	1	Housing Kit, Impeller - Includes Parts Marked # (Kit Replaces Impeller Housing With 1" Mounting Flange)
7	518-0392	1	*Ring, Retaining - External
8	SCREW, MACHINE - FILLISTER HEAD BINDING		
	815-0477	4	Impeller Housing With 1" Mounting Flange (#10-32 x 1-1/8")
	815-0465	4	#Impeller Housing With 1/8" Mounting Flange (#10-32 x 3/8")
9	131-0217	1	*Plate, Wear
10	131-0220	1	*Seal, Rotary
11	518-0373	1	*Ring, Retaining - Internal

\* - Parts Included in 131-0258 Repair Kit

# - Parts Included in 132-0229 Impeller Housing Kit

# COOLING SYSTEM



CS-1091

## COOLING SYSTEM

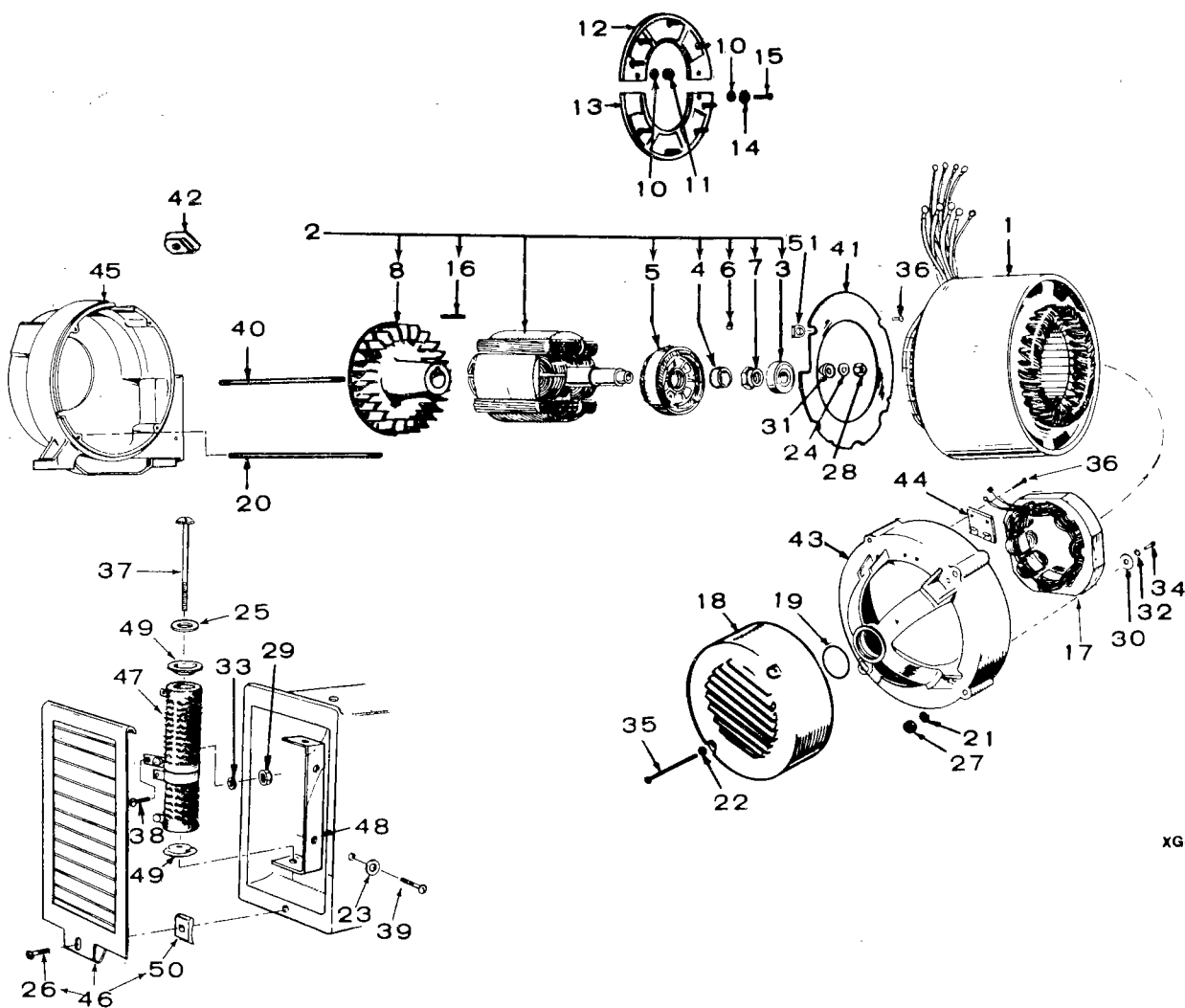
REF. NO.	PART NO.	QTY. USED	PART DESCRIPTION	REF. NO.	PART NO.	QTY. USED	PART DESCRIPTION
1	MANIFOLD ASSEMBLY, EXHAUST (Includes Parts Marked *)			31	503-0696	1	Hose, Water (1/2" x 7") Pump to Block - Sets Without Heat Exchanger or Keel Cooling
	154-2123	1	Sets Without Heat Exchanger	32	503-0183	3	Clamp, Hose - Sets Without Heat Exchanger or Keel Cooling
	154-2122	1	Sets With Heat Exchanger	33	BRACKET, WATER PUMP MOUNTING		
2	154-1057	2	Gasket, Exhaust Manifold		131-0241	1	Sets Without Heat Exchanger
3	505-0110	1	Plug, Pipe (3/8") Not Used on Sets With Heat Exchanger		131-0227	1	Sets With Heat Exchanger
4	502-0074	1	Elbow, Inverted Male (Brass) Not Used on Sets With Heat Exchanger	34	800-0006	2	Screw, Cap - Hex Head (1/4-20 x 1-1/8")
5	502-0103	1	Connector, Inverted Male (Brass) Not Used on Sets With Heat Exchanger	35	870-0212	2	Nut, Hex - Self Locking (1/4-20)
6	130-0510	1	Line, Water - Not Used on Sets With Heat Exchanger	36	CONNECTOR, HOSE - PUMP INLET		
7	COVER, THERMOSTAT				502-0238	1	Straight - Sets Without Heat Exchanger or Keel Cooling
	309-0144	1	Sets Without Heat Exchanger or Keel Cooling		502-0575	1	Elbow (45°) - Sets With Heat Exchanger or Keel Cooling
	309-0161	1	Sets With Keel Cooling	37	502-0237	2	Elbow, Hose - 90° (Brass) Pump Outlet and Block Inlet - Sets Without Keel Cooling
	309-0282	1	Sets With Heat Exchanger	38	131-0130	1	Bar, Water Pump Holddown - Sets Without Heat Exchanger or Keel Cooling
8	505-0274	1	Plug, Pipe - Countersunk Hex (1/8")	39	800-0005	2	Screw, Cap - Hex Head (1/4-20 x 3/4") Sets Without Heat Exchanger or Keel Cooling
9	309-0145	1	Gasket, Thermostat Cover Mounting	40	850-0040	2	Washer, Lock - Spring (1/4") Sets Without Heat Exchanger or Keel Cooling
10	THERMOSTAT			41	800-0034	2	Screw, Cap - Hex Head (5/16-18 x 2-1/4") Sets With Heat Exchanger
	309-0130	1	Sets Without Heat Exchange or Keel Cooling	42	526-0113	2	Washer, Flat (11/32" ID x 1" OD x 3/32" Thk) Sets With Heat Exchanger
	309-0289	1	Sets With Heat Exchanger or Keel Cooling	43	309-0420	1	Switch, High Exhaust Temperature - Use Began During Spec AD
11	520-0143	2	Stud, Thermostat Cover Mounting - Sets Without Heat Exchanger	44	815-0410	2	Screw, Machine - Binding Head (#6-32 x 1/4") Use Began During Spec AD
12	869-0002	2	Nut, Acorn (Special) Sets Without Heat Exchanger	45	854-0008	2	Washer, Lock - IT (#6) Use Began During Spec AD
13	502-0237	1	Elbow, Hose - 90° (Brass) Not Used on Sets With Heat Exchanger	46	800-0026	4	Screw, Cap - Hex Head (5/16-18 x 3/4")
14	503-0084	1	Hose, Water (1/2" x 6") Sets Without Heat Exchanger or Keel Cooling	47	850-0045	4	Washer, Lock - Spring (5/16")
15	505-0949	1	Plug, Pipe - Countersunk (1-1/4")	48	800-0512	2	Screw, Cap - Hex Head (5/16-18 x 1") Sets With Heat Exchanger
16	503-0547	2	Clamp, Hose - Sets Without Heat Exchanger or Keel Cooling	49	526-0113	2	Washer, Flat (11/32" ID x 1" OD x 3/32" Thk) Sets With Heat Exchanger
17	155-1058	1	Elbow, Exhaust	50	503-0586	1	Hose, Water Pump Inlet (1/2 x 36")
18	505-0625	1	Nipple, Close (1-1/4")	51	803-0063	1	#Screw, Set
19	503-0575	1	Elbow, Exhaust Hose	52	800-0003	4	Screw, Cap - Hex Head (1/4-20 x 1/2")
20	502-0237	2	Elbow, Hose - 90° (Brass) Sets With Heat Exchanger	53	850-0040	4	Washer, Lock - Spring (1/4")
21	503-0465	2	Clamp, Hose	54	800-0006	2	Screw, Cap - Hex Head (1/4-20 x 1-1/8") Sets With Heat Exchanger or Keel Cooling
22	517-0041	3	*Plug, Welch	55	870-0212	2	Nut, Hex - Self Locking (1/4-20) Sets With Heat Exchanger or Keel Cooling
23	526-0122	2	Washer, Flat (11/32" ID x 23/32" OD x 10 Gauge Thk)	56	502-0237	1	Elbow, Hose - 90° (Brass)
24	110-0445	4	Nut, Hex (Special)	57	154-1665	2	Tab, Lock (Use Began in 1983)
25	526-0045	4	Washer, Flat (21/64" ID x 5/8" OD x 1/8" Thk)	58	LEAD, EXHAUST TEMPERATURE SWITCH		
26	131-0257	1	Pump, Water (Sea Water) (See Separate Group for Components)		336-7571	1	13-1/2"
27	BRACKET, WATER PUMP MOUNTING				336-7572	1	25"
	131-0228	1	Spec AB Through AD				
	131-0362	1	Begin Spec AE				
28	512-0135	1	Pulley Kit, Water Pump - Includes Parts Marked #				
29	BELT, WATER PUMP						
	511-0067	1	Sets Without Heat Exchanger or Keel Cooling				
	511-0076	1	Sets With Keel Cooling				
	511-0103	1	Sets With Heat Exchanger				
30	GUARD, WATER PUMP BELT						
	131-0229	1	Sets Without Keel Cooling				
	131-0250	1	Sets With Keel Cooling				

\* - Part Included in Exhaust Manifold Assemblies

# - Part Included in Pulley Kit 512-0135



# GENERATOR (12 VOLT DC)



XG-1074

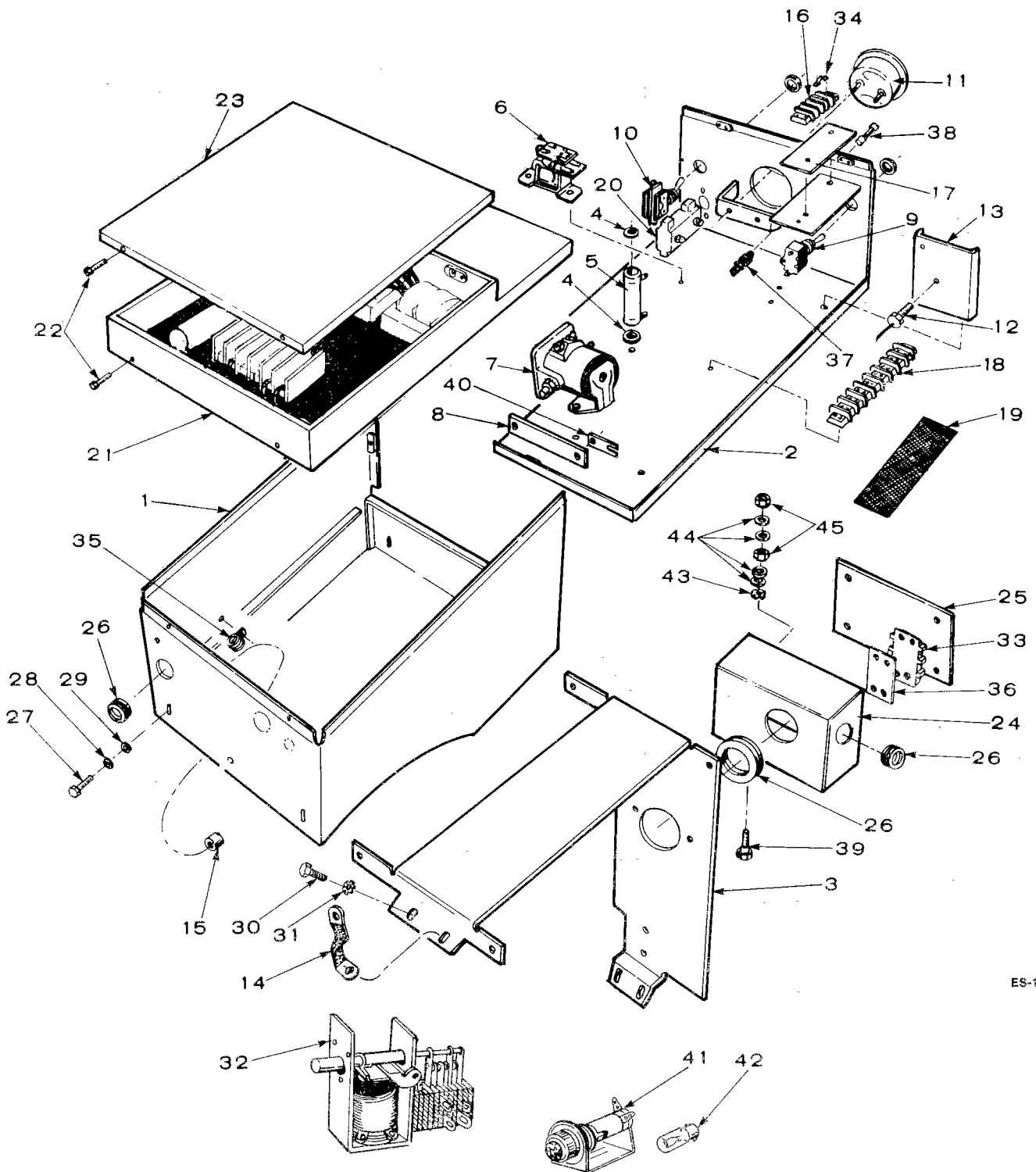
## GENERATOR (12 VOLT DC)

REF. NO.	PART NO.	QTY. USED	PART DESCRIPTION	REF. NO.	PART NO.	QTY. USED	PART DESCRIPTION
1	STATOR, GENERATOR			31	232-0200	1	Washer - Cone Shaped (Special) Rotor Through Stud
	220-2023	1	50 Hertz Single Phase	32	853-0013	2	Washer, Lock (1/4" ET) - Exciter Stator
	220-2048	1	Three Phase	33	856-0003	1	Washer, Lock (#10 EIT) - Resistor Tap
	220-2015	1	60 Hertz Single Phase	34	800-0004	2	Screw, Cap - Hex Head (1/4-20 x 5/8") - Exciter Stator Mounting
	220-2040	1	Three Phase	35	SCREW, MACHINE - ROUND HEAD (End Bell Cover Mounting)		
2	201-2155	1	Rotor Assembly, Generator (Includes Parts Marked *)	812-0165		2	Sets Without Overspeed Switch (1/4-20 x 4-1/2")
3	510-0112	1	*Bearing, Rotor	812-0167		2	Sets With Overspeed Switch (1/4-20 x 6")
4	232-2398	1	*Spacer, Bearing	36	815-0194	6	Screw, Hex Head - Thread Cutting with ET (#10-32 x 3/8") Board (2) and Baffle (4) Mounting
5	201-2151	1	*Rotor, Exciter	37	812-0169	1	Screw, Machine - Round Head (1/4-20 x 5-1/2") - Resistor Through
6	515-0094	1	*Key, Exciter Rotor	38	811-0098	1	Screw, Machine - Round Head (Brass) (#10-32 x 3/8") - Resistor Tap
7	870-0284	1	*Nut, Exciter Rotor Locking	39	800-0004	2	Screw, Cap - Hex Head (1/4-20 x 5/8") - Resistor Bracket
8	205-0105	1	*Fan, Generator	40	520-0787	1	Stud, Rotor Through
10	526-0008	12	*Washer, Flat (13/64" ID x 7/16" OD x 1/32" Thk)	41	234-0462	1	Baffle, Air
11	870-0131	8	*Nut, Hex (#10-32)	42	508-0112	1	Grommet, Rubber - Generator Adapter (2-3/4" x 1-7/8")
12	358-0069	1	*Rectifier Assembly - Positive	43	211-0237	1	Bell, End
13	358-0070	1	*Rectifier Assembly - Negative	44	232-2418	1	Board, Connection
14	853-0008	4	*Washer, Shakeproof (#10)	45	231-0171	1	Adapter, Generator
15	813-0100	4	*Screw, Round Head (#10-32 x 1/2")	46	234-0494	1	Cover Assembly, Air Outlet (Includes Parts Marked #)
16	515-0103	1	*Key, Fan to Rotor	47	304-0500	1	Resistor, Tapped - Adjustable
17	220-2009	1	Stator, Exciter	48	232-2399	1	Bracket, Resistor Mounting
18	COVER, END BELL			49	304-0006	2	Washer, Centering - Resistor Mounting
	234-0185	1	Sets Without Overspeed Switch	50	870-0177	1	#Nut, Speed (#10)
	234-0498	1	Sets With Overspeed Switch	51	508-0095	1	Grommet, Rubber - Air Baffle (25/32" x 21/32")
19	509-0094	1	Seal, Bearing ("O" Ring)				
20	520-0795	4	Stud, Generator Through				
21	850-0050	4	Washer, Lock - Spring (3/8") - Generator Through Stud				
22	850-0040	2	Washer, Lock - Spring (1/4") - End Bell Cover				
23	850-0040	2	Washer, Lock - Spring (1/4") - Resistor Bracket				
24	850-0055	1	Washer, Lock - Spring (7/16") - Rotor Through Stud				
25	853-0013	1	Washer, Lock (1/4" ET) - Resistor Through Screw				
26	809-0046	1	#Screw, Sheet Metal - Round Head (#10 x 3/4")				
27	862-0011	4	Nut, Hex (3/8-16) - Generator Through Stud				
28	870-0203	1	Nut, Hex (7/16-20) - Rotor Through Stud				
29	871-0010	1	Nut, Hex - Brass (#10-32) Resistor Tap				
30	526-0260	2	Washer, Flat (Special) - Exciter Stator				

\* - Parts Included in 201-2155 Generator Rotor Assembly.

# - Parts Included in 234-0494 Cover Assembly.

# CONTROL

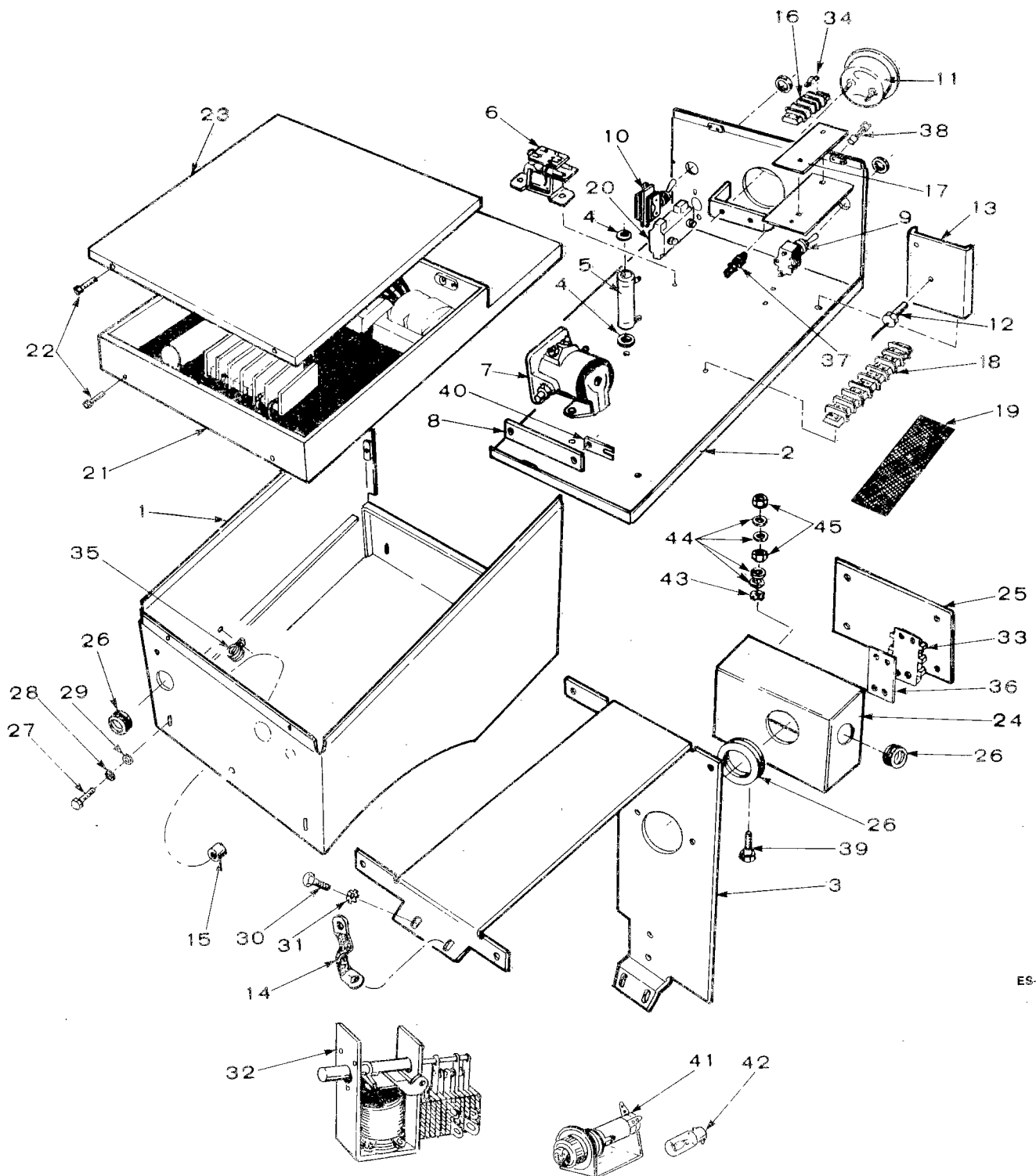


ES-1133

# CONTROL

REF. NO.	PART NO.	QTY. USED	PART DESCRIPTION
1	301-1962	1	Box, Control
2	PANEL, CONTROL		
	301-1961	1	Sets Without Overspeed Indicator Lamp
	301-2376	1	Sets With Overspeed Indicator Lamp
3	301-3683	1	Saddle, Control Box
4	508-0015	4	Washer, Fiber
5	RESISTOR		
			<b>12 Volt DC Sets (Fixed)</b>
	304-0217	1	Low Oil Pressure
	304-0032	1	Start Disconnect
			<b>24 Volt DC Sets (Adjustable)</b>
	304-0268	1	Low Oil Pressure
	304-0194	1	Start Disconnect
6	307-0623	1	Relay, Start Disconnect
7	RELAY, SOLENOID		
			<b>12 Volt DC Sets</b>
	307-1046	1	Manifold Heater
	307-0845	1	Start
			<b>24 Volt DC Sets</b>
	307-0061	1	Manifold Heater
	307-0875	1	Start
8	332-0602	1	Jumper, Heater Solenoid to Start Solenoid
9	308-0154	1	Switch, Start/Stop
10	308-0037	1	Switch, Manifold Heater
11	302-1366	1	Ammeter Kit, Charge - Includes Mounting Hardware
12	RECTIFIER KIT		
	305-0673	1	<b>12 Volt DC Sets</b>
	358-0096	1	<b>24 Volt DC Sets</b>
13	305-0254	1	Bracket, Rectifier Mounting
14	337-0036	1	Strap, Ground - Control Box
15	402-0078	4	Mount, Rubber - Control Box
16	332-0604	1	Block, Terminal (5 Place)
17	332-0616	1	Strip, Marker (5 Place)
18	332-0706	1	Block, Terminal (8 Place)
19	332-0739	1	Strip, Marker (8 Place)
20	320-0104	1	Limiter, Cranking - Low Oil Pressure
21	REGULATOR, VOLTAGE (See Separate Page for Components)		
	305-0589	1	Spec AB Through AE
	305-0689	1	★Begin Spec AF
22	815-0350	8	Screw, Hex Washer Head - Tapping (#10-32 x 3/8")
23	301-3714	1	Cover, Voltage Regulator
24	BOX, OUTPUT		
	301-2467	1	Spec A Through Portion of Spec AD (Measures 6" x 3" x 4")
	301-5990	1	Use Began During Spec AD (Measures 8-7/8" x 2-7/8" x 4-1/8")
25	COVER, OUTPUT BOX		
	301-2466	1	Spec A Through Portion of Spec AD (Measures 6" x 4")
	301-5992	1	Use Began During Spec AD (Measures 8-7/8" x 4-1/4")
26	GROMMET, RUBBER		
	508-0001	1	Control Box (1-1/16" Hole)
			Output Box
	508-0117	1	Side (1-3/8" Hole)
	508-0183	1	Rear (1-3/4" Hole)
27	800-0024	4	Screw, Cap - Hex Head (5/16-18 x 1/2")

# CONTROL



ES-1133

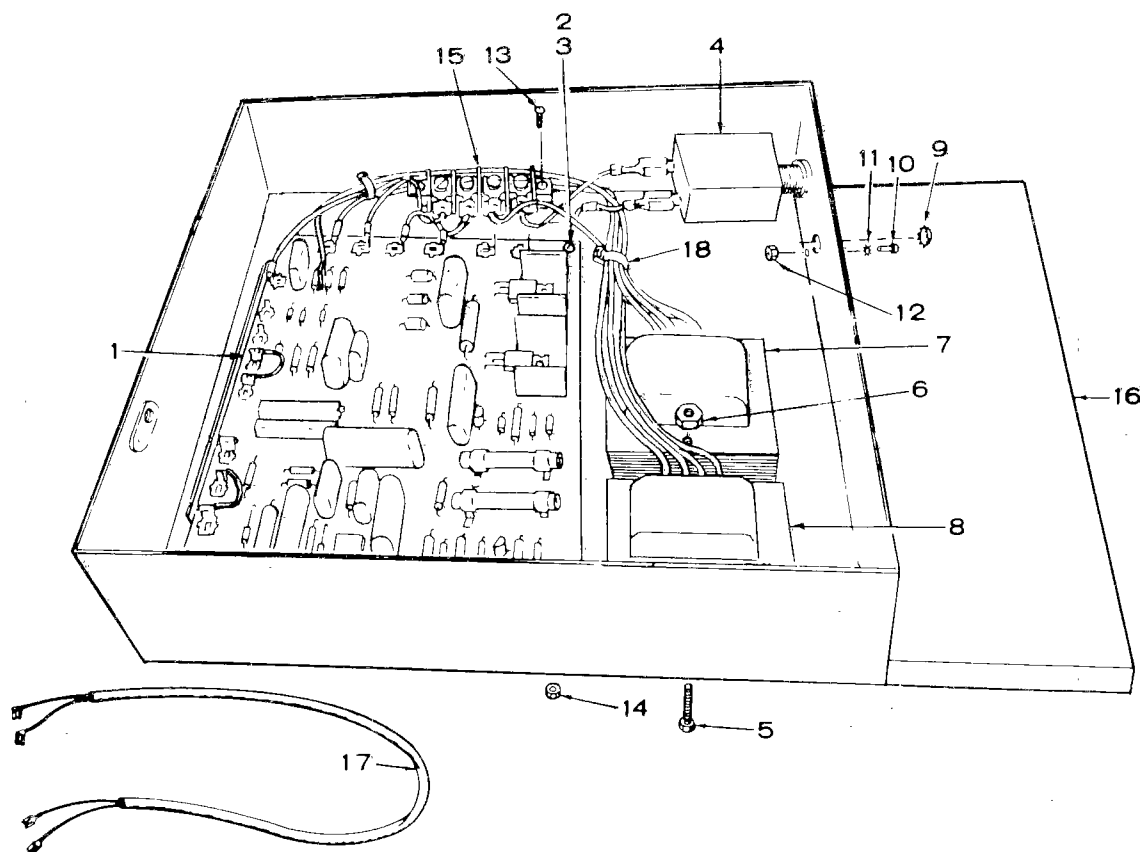
# CONTROL

REF. NO.	PART NO.	QTY. USED	PART DESCRIPTION
28	850-0045	4	Washer, Lock - Spring (5/16")
29	526-0115	4	Washer, Flat (11/32" ID x 11/16" OD x 1/16" Thk)
30	815-0236	4	Screw, Self Tapping - Hex Head (5/16-18 x 5/8")
31	856-0008	4	Washer, Lock - EIT (5/16")
32	307-0655	1	Relay, Latching - Sets With Overspeed Switch
33	332-0747	1	Block, Terminal (2 Place) Use Began During Spec AD (Not Used on 3 Phase Sets)
34	332-1043	1	Jumper, Terminal Block (Not Used When Pre-Heat Circuit In Automatic or Load Transfer is Used)
35	332-0052	1	Clip, Wire
36	332-0748	1	Strip, Marker (2 Place) Use Began During Spec AD (Not Used on 3 Phase Sets)
37	321-0175	1	Holder, Fuse
38	321-0146	1	Fuse - 10 Amp
39	800-0703	1	Stud, Grounding (Special) Use Began During Spec AD
40	337-0089	1	Jumper, Manifold Heater Solenoid Relay - 24 Volt Sets
41	322-0069	1	Holder, Indicator Lamp - Sets With Overspeed Switch
42	322-0004	1	Lamp Indicator - Sets With Overspeed Switch
43	856-0006	1	Washer, Lock - EIT (1/4") Use Began During Spec AD
44	526-0018	4	Washer, Flat (17/64" ID x 5/8" OD x 1/16" Thk) Use Began During Spec AD
45	862-0013	2	Nut, Hex (1/4-20) Use Began During Spec AD

★ - Listed below are the models and serial numbers of specific generator sets in Spec AF which were manufactured using the 305-0589 Voltage Regulator Assembly. This assembly uses the 300-1540 printed Voltage Regulator board. For the remaining component parts refer to the voltage regulator group for Spec AB through AE.

6.0MDJE-53CR/2268AF	I820633596
7.5MDJE-3CR/2268AF	H820630361
7.5MDJE-3CR/2268AF	H820630362
7.5MDJE-3CR/2268AF	H820630363
7.5MDJE-3CR/2268AF	H820630364
7.5MDJE-3CR/2268AF	H820630365
7.5MDJE-3CR/2268AF	H820630366
7.5MDJE-3CR/2268AF	H820630367
7.5MDJE-3CR/2268AF	H820630368
7.5MDJE-3CR/2268AF	H820630369
7.5MDJE-3CR/2268AF	H820630370
7.5MDJE-3CR/2268AF	H820630371
7.5MDJE-3CR/2268AF	H820630372
7.5MDJE-3CR/2268AF	H820630373
7.5MDJE-3CR/2268AF	H820630374
7.5MDJE-3CR/2268AF	H820630375
7.5MDJE-3CR/2268AF	H820630376
7.5MDJE-3CR/2268AF	H820630377
7.5MDJE-3CR/2268AF	H820630378
7.5MDJE-3CR/2268AF	H820630379
7.5MDJE-3CR/2268AF	H820630380
7.5MDJE-3CR/2268AF	H820630381
7.5MDJE-3CR/2268AF	H820630382
7.5MDJE-3CR/2268AF	H820630383
7.5MDJE-3CR/2268AF	H820630384
7.5MDJE-3CR/2268AF	I820632166
7.5MDJE-3CR/2268AF	I820632167
7.5MDJE-3CR/2268AF	I820632168
7.5MDJE-3CR/2268AF	I820632169
7.5MDJE-3CR/2268AF	I820632170
7.5MDJE-3CR/2268AF	I820632171
7.5MDJE-3CR/2268AF	I820632172
7.5MDJE-3CR/2268AF	I820632173
7.5MDJE-3CR/2268AF	I820632174
7.5MDJE-3CR/2268AF	I820632177
7.5MDJE-3CR/2268AF	I820633612
7.5MDJE-3CR/2268AF	I820633618
7.5MDJE-3CR/2268AF	I820633620
7.5MDJE-3CR/2268AF	I820633621
7.5MDJE-3CR/2268AF	I820633622
7.5MDJE-3CR/2268AF	J820635348
7.5MDJE-3CR/2268AF	J820635349
7.5MDJE-3CR/2268AF	J820635350
7.5MDJE-3CR/2268AF	J820635351
7.5MDJE-3CR/2268AF	J820635352
7.5MDJE-3CR/2268AF	J820635353
7.5MDJE-3CR/2268AF	J820635355
7.5MDJE-3CR/2268AF	J820635356
6.0MDJE-53CR/25302AF	I820634390

## VOLTAGE REGULATOR — SPEC AB THROUGH AE



ES-1131

REF. NO.	PART NO.	QTY. USED	PART DESCRIPTION	REF. NO.	PART NO.	QTY. USED	PART DESCRIPTION
	305-0589	1	Regulator, Voltage (Includes Parts Marked *)	9	517-0045	1	*Plug, Dot Button
1	300-1540	1	*Board, Voltage Regulator - Begin Spec AD (Replaces 300-1404 Board Used During Spec AB and AC) Refer to Printed Circuit Board Parts Catalog Number 900-0234 for Board Components	10	812-0027	1	*Screw, Machine - Round Head (#4-40 x 1/4")
2	815-0190	4	*Screw, Tapping - Round Head (#8-32 x 3/8")	11	853-0001	1	*Washer, Lock - ET (#4)
3	853-0005	4	*Washer, Lock - ET (#8)	12	860-0003	1	*Nut, Hex (#4-40)
4	320-0505	1	*Breaker, Circuit	13	812-0063	2	*Screw, Machine - Round Head (#6-32 x 1/2")
5	812-0070	4	*Screw, Machine - Round Head (#6-32 x 1-1/4")	14	870-0183	2	*Nut, Hex - With ET (#6-32)
6	870-0183	4	*Nut, Hex - With ET (#6-32)	15	332-1647	1	*Block, Terminal
7	315-0391	1	*Reactor	16	301-3713	1	*Panel, Mounting
8	315-0386	1	*Transformer, Voltage	17	HARNESS, WIRING - Voltage Regulator to Exciter Stator		
					338-0744	1	Sets Without Overspeed Switch
					338-0917	1	Sets With Overspeed Switch
				18	332-0942	8	*Tie, Cable

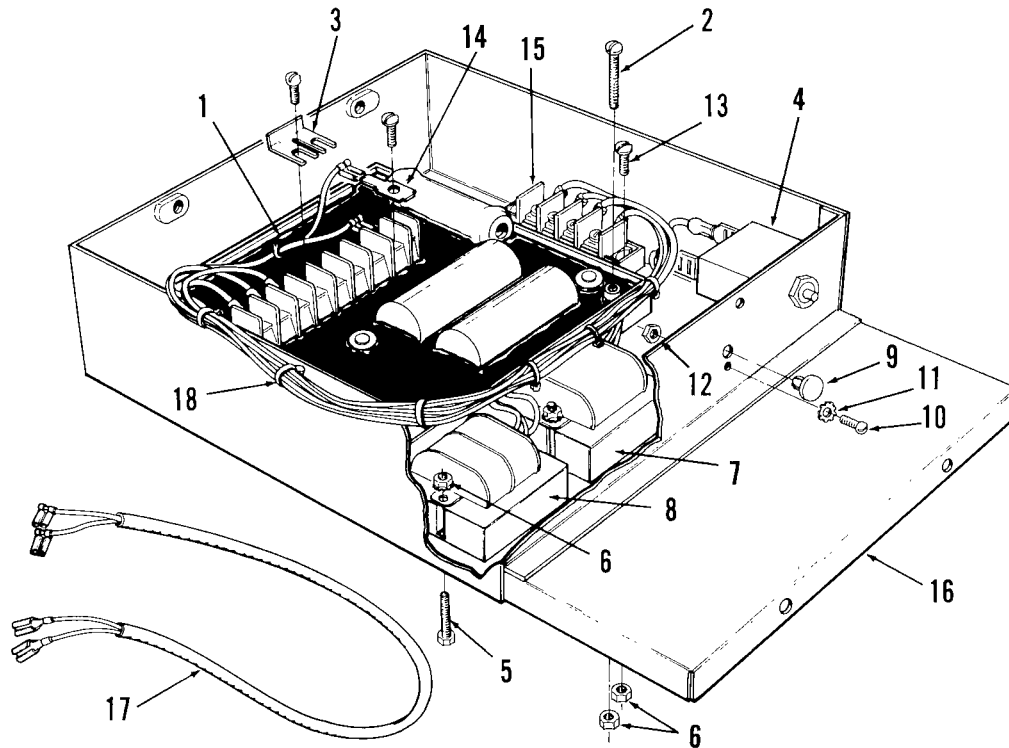
\* - Parts Included in 305-0589 Voltage Regulator

## SERVICE KITS AND MISCELLANEOUS

PART NO.	QTY. USED	PART DESCRIPTION
98-1807	1	Label Kit
168-0147	1	Gasket Kit, Engine
522-0314	1	Overhaul Kit, Engine
525-0216	—	Paint, Touch-Up - White Enamel (13 oz. Pressurized Can)

**NOTE:** For other kits refer to the related group

## VOLTAGE REGULATOR — BEGIN SPEC AF



XSC-1342

REF. NO.	PART NO.	QTY. USED	PART DESCRIPTION
	305-0689	1	Regulator Assembly, Voltage (Includes Parts Marked *)
1	305-0688	1	*Regulator, Voltage
2	812-0071	4	*Screw, Machine - Round Head (#6-32 x 1-1/2")
3	JUMPER, TERMINAL		
	332-2605	2	*50 Hertz
	332-2605	1	60 Hertz
4	320-1121	1	*Breaker, Circuit
5	812-0070	4	*Screw, Machine - Round Head (#6-32 x 1-1/4")
6	870-0183	10	*Nut, Hex - ET (#6-32)
7	315-0391	1	*Reactor
8	315-0386	1	*Transformer, Voltage
9	517-0045	1	*Plug, Dot Button

REF. NO.	PART NO.	QTY. USED	PART DESCRIPTION
10	812-0027	1	*Screw, Machine - Round Head (#4-40 x 1/4")
11	853-0001	1	*Washer, Lock - ET (#4)
12	860-0003	1	*Nut, Hex (#4-40)
13	812-0063	2	*Screw, Machine - Round Head (#6-32 x 1/2")
14	332-2617	2	*Terminal, Tab
15	332-1647	1	*Block, Terminal
16	301-3713	1	*Panel, Mounting
17	HARNESS, WIRING - Voltage Regulator to Exciter Stator		
	338-0744	1	Sets Without Overspeed Switch
	338-0917	1	Sets With Overspeed Switch
18	332-0942	10	*Tie, Cable

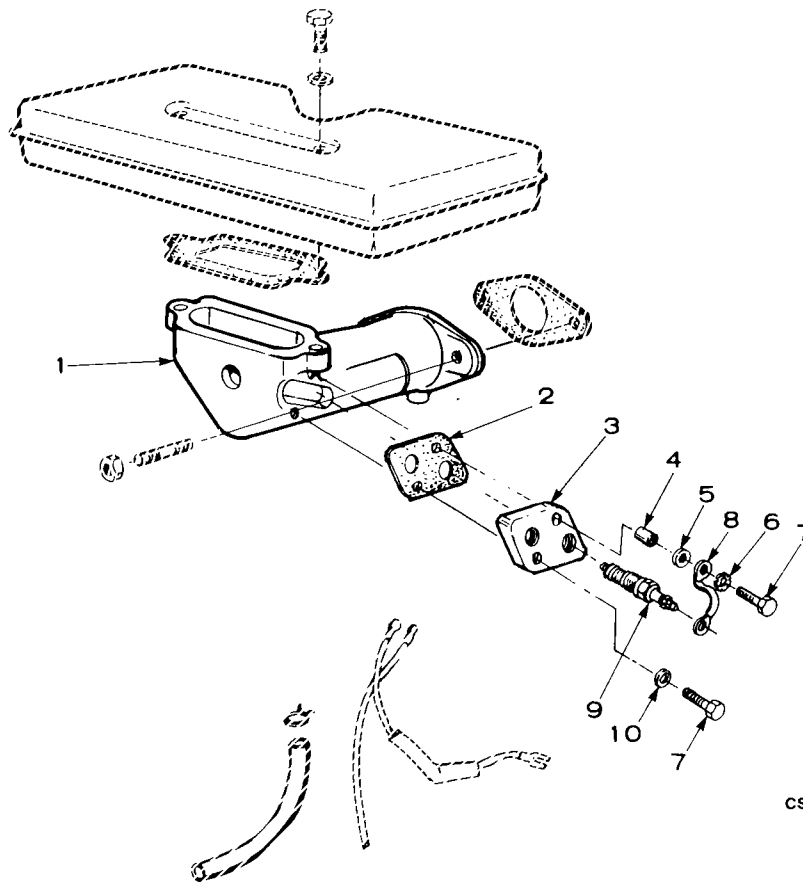
\* - Parts Included in 305-0689 Voltage Regulator Assembly.



## **OPTIONAL PARTS SECTION**

**This section contains illustrated parts listing of factory installed options. Options may not be applicable to all models; for field conversions additional parts are usually required.**

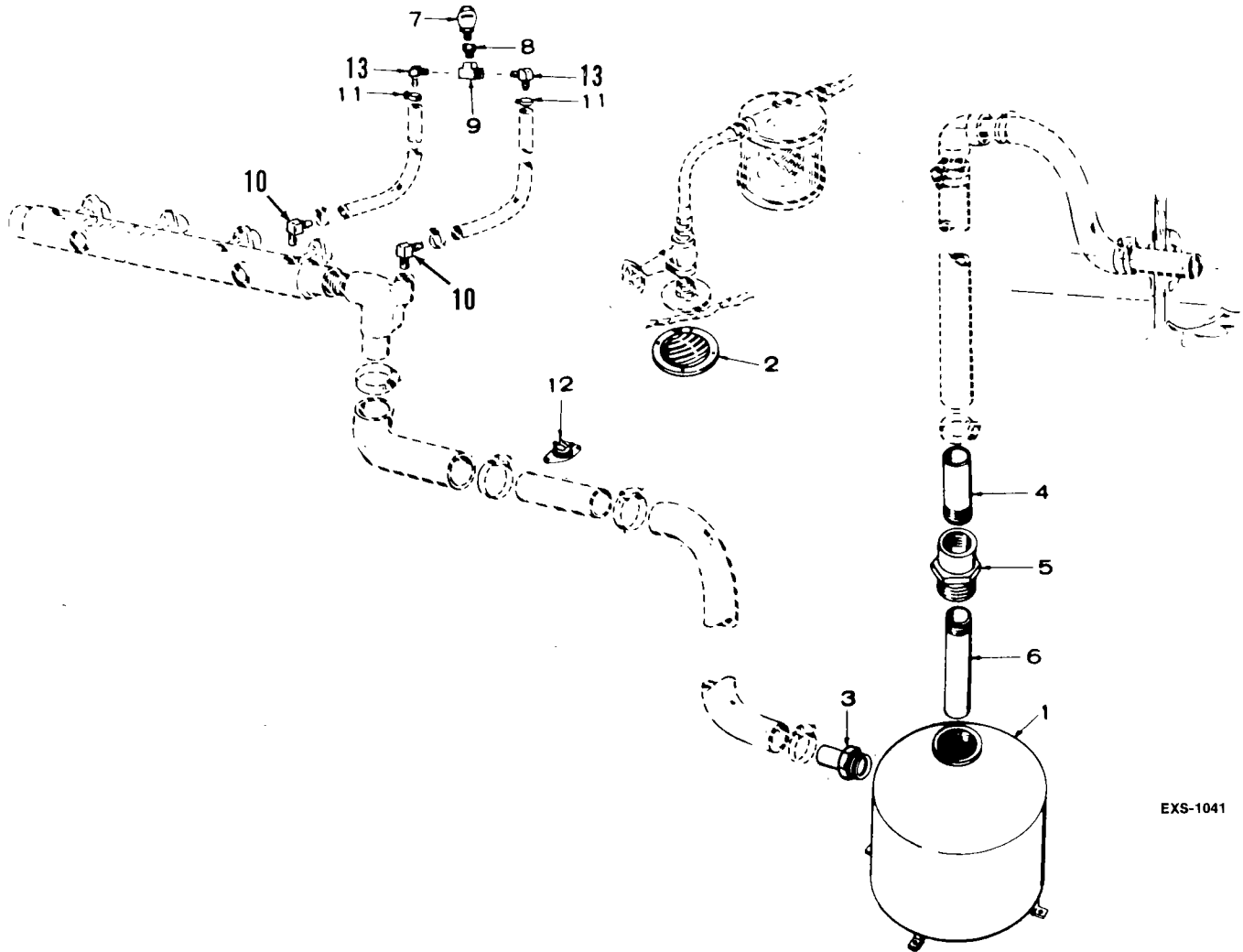
## AIR INTAKE SYSTEM (24 VOLT DC) - OPTIONAL



CS-1092

REF. NO.	PART NO.	QTY. USED	PART DESCRIPTION
1	140-0817	1	Adapter, Resonator
2	140-1704	1	Gasket, Heater Plate
3	140-1703	1	Plate, Heater
4	508-0103	2	Sleeve, Insulating
5	508-0102	2	Washer, Insulating
6	853-0013	1	Washer, Flat - ET Lock (1/4")
7	114-0023	2	Screw, Cap - Hex Head (Special)
8	336-1408	1	Lead, Heater to Ground
9	154-0712	2	Heater, Manifold
10	526-0015	1	Washer, Flat (9/32" ID x 9/16" OD x 1/16" Thk)

## AQUALIFT EXHAUST SYSTEM - OPTIONAL



EXS-1041

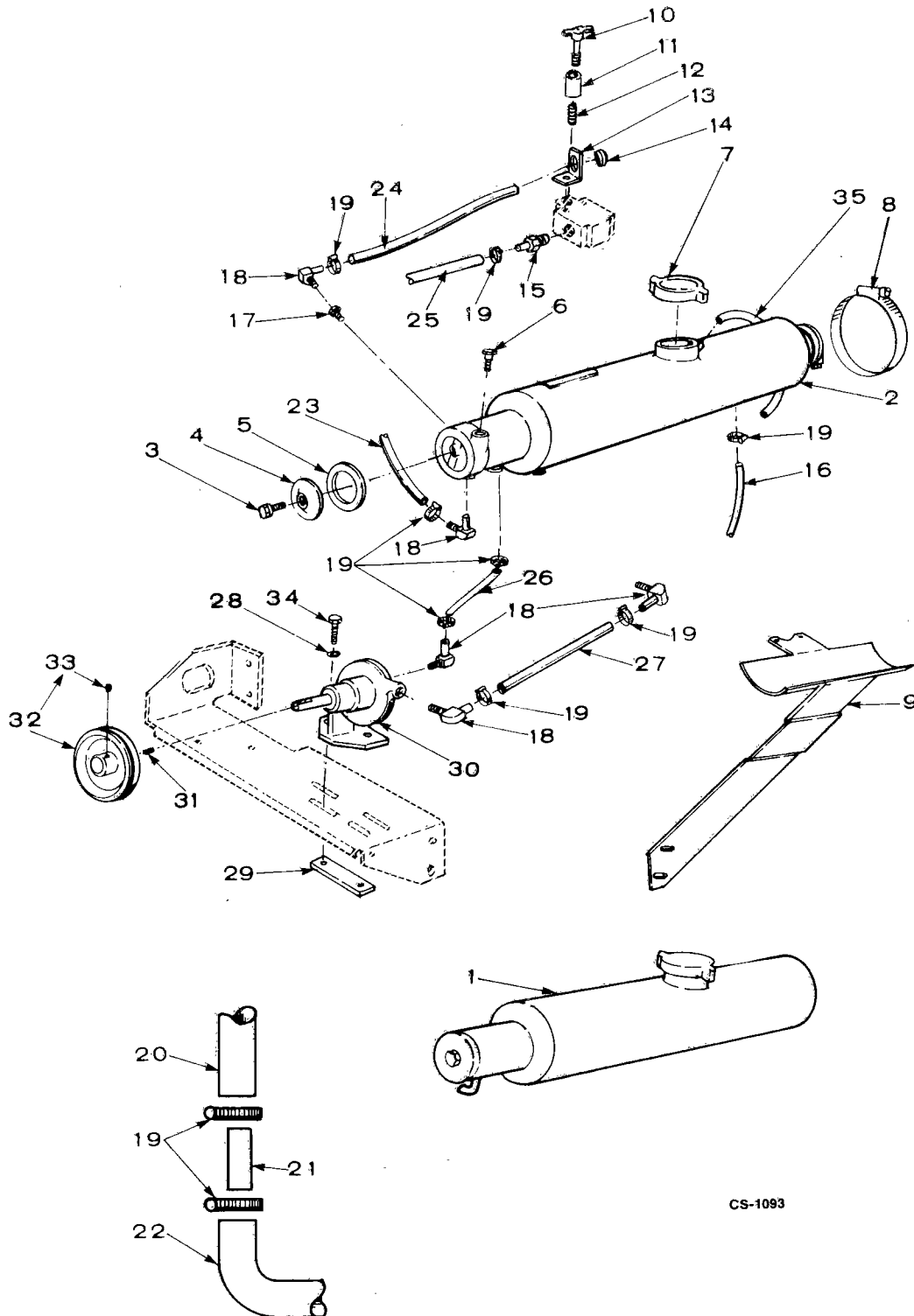
REF. NO.	PART NO.	QTY. USED	PART DESCRIPTION
	155-0955	1	Fitting Package, Muffler Hookup - Includes Parts Marked #
	155-0950	1	Relief Valve Kit, Siphon Break - Includes Parts Marked +
1	155-1004	1	Muffler Kit, Aqualift - Includes Parts Marked *
2	155-1002	1	*Strainer, Hull
3	155-1121	1	#Inlet, Muffler
4	505-0721	1	#Nipple, Half - Pipe - Galvanized (1-1/4" x 3")
5	505-0635	1	#Bushing, Double Tapped (1-1/4" x 2")
6	505-0632	1	#Nipple, Half - Plastic (1-1/4" x 9-1/4")
7	504-0062	1	+Valve, Vacuum Relief
8	502-0270	1	+Adapter, Pipe - Brass (1/2" x 3/8")
9	502-0090	1	+Tee, Pipe - Brass (3/8")
10	502-0237	2	+Connector, Hose - Brass (90°)
11	503-0446	2	Clamp, Hose
12	309-0162	1	Switch, Temperature (Opens at 240°F) (Closes at 195°F)
13	505-1346	2	Elbow, Hose - 90°

# - Parts Included in 155-0955 Muffler Fitting Package

+ - Parts Included in 155-0950 Siphon Break Kit

\* - Part Included in 155-1004 Muffler Kit

# HEAT EXCHANGER - OPTIONAL



CS-1093

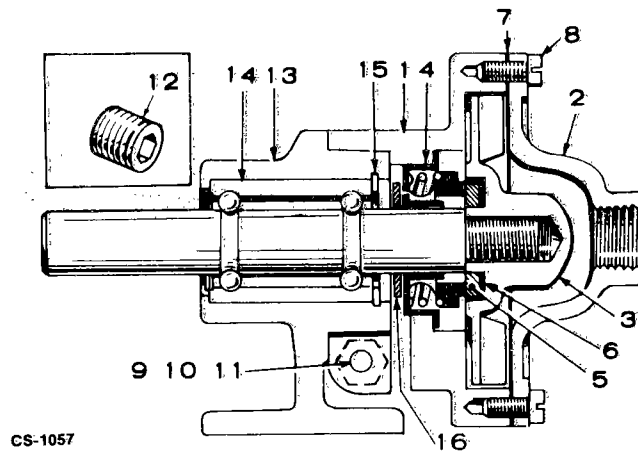
## HEAT EXCHANGER - OPTIONAL

REF. NO.	PART NO.	QTY. USED	PART DESCRIPTION	REF. NO.	PART NO.	QTY. USED	PART DESCRIPTION
1	130-1338	1	Exchanger Kit, Heat - Replaces Heat Exchanger Used Prior to Serial Number L770286184 During Spec AB (Includes 7 foot of bulk 1/2" ID water hose and parts marked #)	21	130-1040	1	#Connector, Hose - Heat Exchanger Hose to Molded Exhaust Manifold Hose - Prior to Serial Number L770286184 During Spec AB
2	130-1188	1	#Exchanger, Heat - Begin Serial Number L770286184 During Spec AB	22	503-0777	1	#Elbow Hose - 90° Molded - Hose Connector to Exhaust Manifold - Prior to Serial Number L770286184 During Spec AB
3	815-0300	1	Screw, End Cover (Brass)	23	503-0896	1	Hose, Water - Sea Water Pump to Heat Exchanger
4	130-1031	1	Cover, End	24	HOSE, WATER - Heat Exchanger to Exhaust Elbow		
5	130-0959	1	Gasket, End Cover	503-0897	1	Prior to Serial Number L770286184 During Spec AB	
6	130-1340	1	Pencil, Zinc - Begin Serial Number L770286184 During Spec AB	503-0986	1	Begin Serial Number L770286184 During Spec AB	
7	130-0589	1	Cap, Pressure - Begin Serial Number L770286184 During Spec AB	25	503-0469	1	Hose, Water - Thermostat to Exhaust Manifold
8	503-0612	2	#Clamp, Heat Exchanger Mounting	26	503-0696	1	Hose, Water - Heat Exchanger to Captive Water Pump
9	BRACKET, HEAT EXCHANGER MOUNTING			27	503-0459	1	Hose, Water - Captive Water Pump to Block
	130-0903	1	Spec AB Through AD	28	850-0040	2	Washer, Lock - Spring (1/4")
	130-2169	1	Begin Spec AE	29	131-0130	1	Bar, Water Pump Holddown
10	504-0006	1	Valve, Air Bleed	30	132-0110	1	Pump, Water (Captive Water) (See Separate Group for Components) <b>NOTE:</b> When Replacing Water Pump with Flat Area on Shaft Also Order 1 Each of 132-0252 Pulley and Set Screw Kit and 515-0249 Key
11	505-0026	1	Coupling, Pipe				
12	505-0098	1	Nipple, Close - Pipe				
13	130-1435	1	Bracket, Hose - Begin Serial Number L770286184 During Spec AB				
14	508-0117	1	Grommet, Rubber - Begin Serial Number L770286184 During Spec AB				
15	502-0238	1	#Connector, Hose	31	515-0249	1	Key, Pulley to Water Pump
16	503-0984	1	Elbow, Hose - 90° Molded - Heat Exchanger to Exhaust Manifold Elbow - Begin Serial Number L770286184 During Spec AB	32	PULLEY KIT, WATER PUMP Includes Parts Marked *		
				512-0134	1	Sets With Flat Area on Water Pump Shaft	
17	502-0426	1	Adapter, Male to Female - Begin Serial Number L770286184 During Spec AB	132-0252	1	Sets With Keyed Area on Water Pump Shaft	
18	502-0237	5	#Elbow Hose - 90° (Brass) Begin Serial Number L770286184 During Spec AB	33	803-0062	1	*Screw, Set
19	CLAMP, HOSE			34	800-0005	2	Screw, Cap - Hex Head (1/4-20 x 3/4")
	503-0547	13	Prior to Serial Number L770286184 During Spec AB	35	503-0492	1	Hose, Overflow
	503-0547	11	#Begin Serial Number L770286184 During Spec AB				
20	503-0785	1	Hose, Water - Heat Exchanger to Hose Connector - Prior to Serial Number L770286184 During Spec AB				

\* - Parts Included in Water Pump Pulley Kits

# - Parts Included in 130-1338 Heat Exchanger Kit

## WATER PUMP PARTS (132-0110) - OPTIONAL



CS-1057

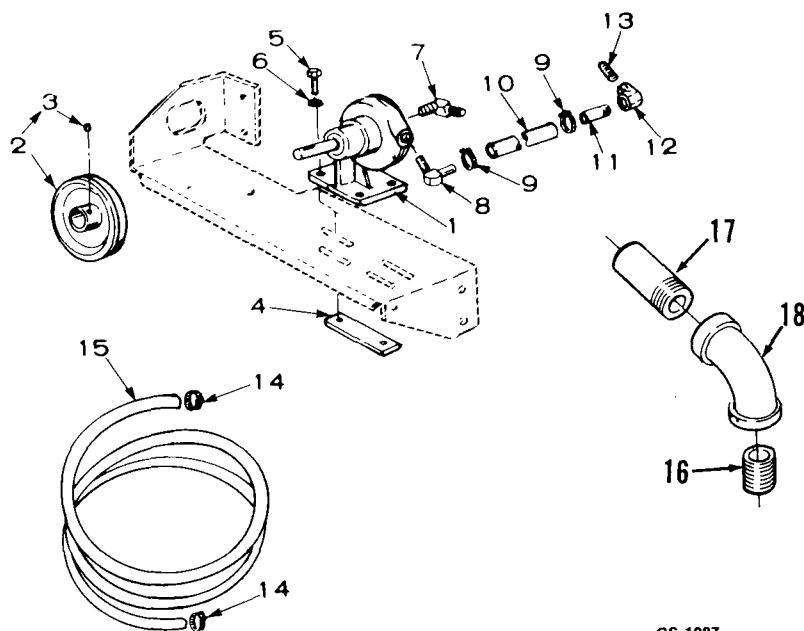
**NOTE:** This pump used on sets with optional Heat Exchanger.

REF. NO.	PART NO.	QTY. USED	PART DESCRIPTION
	132-0110	1	Pump, Water
	REPAIR KIT, WATER PUMP		
	132-0241	1	Sets With Flat Area on Shaft (Includes Water Pump Pulley, Set Screw, Key and Parts Marked *)
	132-0240	1	Sets With Keyed Area on Shaft (Includes Parts Marked #)
1		1	Body, Pump (Not Sold Separately)
2	132-0137	1	Cover, Pump
3	132-0114	1	*#Impeller
4	132-0101	1	*#Seal
5	132-0091	1	*#Face, Wear
6	132-0092	1	*#Seat, Seal
7	132-0112	1	*#Gasket, Cover
8	132-0113	6	*#Screw, Cover
9	132-0138	1	Screw, Cap - Used on Early Style Pumps
10	132-0139	1	Lockwasher - Used on Early Style Pumps
11	132-0140	1	Nut, Hex - Used on Early Style Pumps
12	132-0141	1	Plug, Drain - Used on Early Style Pumps
13	132-0142	1	Pedestal
14	SHAFT AND BEARING ASSEMBLY		
	132-0239	1	*Sets With Flat Area on Shaft (Repair Kit - Also Includes Water Pump Pulley, Set Screw and Key)
	132-0225	1	#Sets With Keyed Area on Shaft
15	132-0132	1	Ring, Snap
16	132-0224	1	Slinger, Fiber

\* - Parts Included in 132-0241 Repair Kit.

# - Parts Included in 132-0240 Repair Kit.

## KEEL COOLING - OPTIONAL

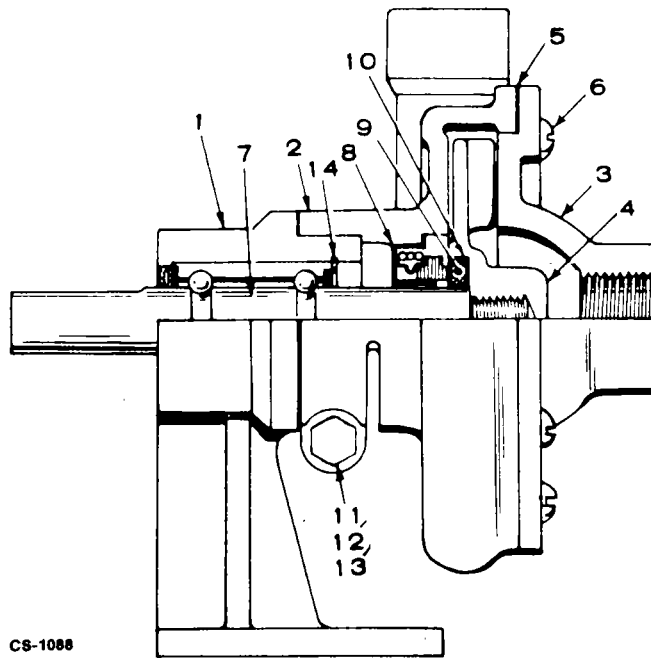


CS-1087

REF. NO.	PART NO.	QTY. USED	PART DESCRIPTION
1	132-0074	1	Pump, Water (Captive Water) See Separate Group for Components
2	512-0134	1	Pulley Kit, Water Pump - Includes Parts Marked *
3	803-0062	1	*Screw, Set
4	131-0144	1	Bar, Water Pump Holddown
5	800-0005	2	Screw, Cap - Hex Head (1/4-20 x 3/4")
6	850-0040	2	Washer, Lock - Spring (1/4")
7	502-0278	1	Elbow, Street - 90° (Brass) Pump Inlet
8	502-0300	1	Elbow, Hose - 90° (Brass) Pump Outlet
9	503-0183	2	Clamp, Hose
10	503-0481	1	Hose, Rubber (3/4" x 8-1/4") Pump to Block
11	502-0258	1	Nipple, Half (Brass) 3/8" x 2" - Block Water Inlet (Spec AB Through AD)
12	502-0298	1	Elbow, Pipe - 45° (Brass) Block Water Inlet (Spec AB Through AD)
13	502-0085	1	Nipple, Close (Brass) Block Water Inlet (Spec AB Through AD)
14	503-0547	2	Clamp, Hose - Sea Water Pump to Exhaust Elbow
15	503-0495	1	Hose, Rubber (1/2" x 22") Sea Water Pump to Exhaust Elbow
16	505-0101	1	Nipple, Close (Iron) Block Water Inlet (Begin Spec AE)
17	505-0135	1	Nipple, Half (Iron) Block Water Inlet (Begin Spec AE)
18	505-0376	1	Elbow, 45° (Iron) Block Water Inlet (Begin Spec AE)

\* - Part Included in Pulley Kit 512-0134

## WATER PUMP PARTS (132-0074) - OPTIONAL



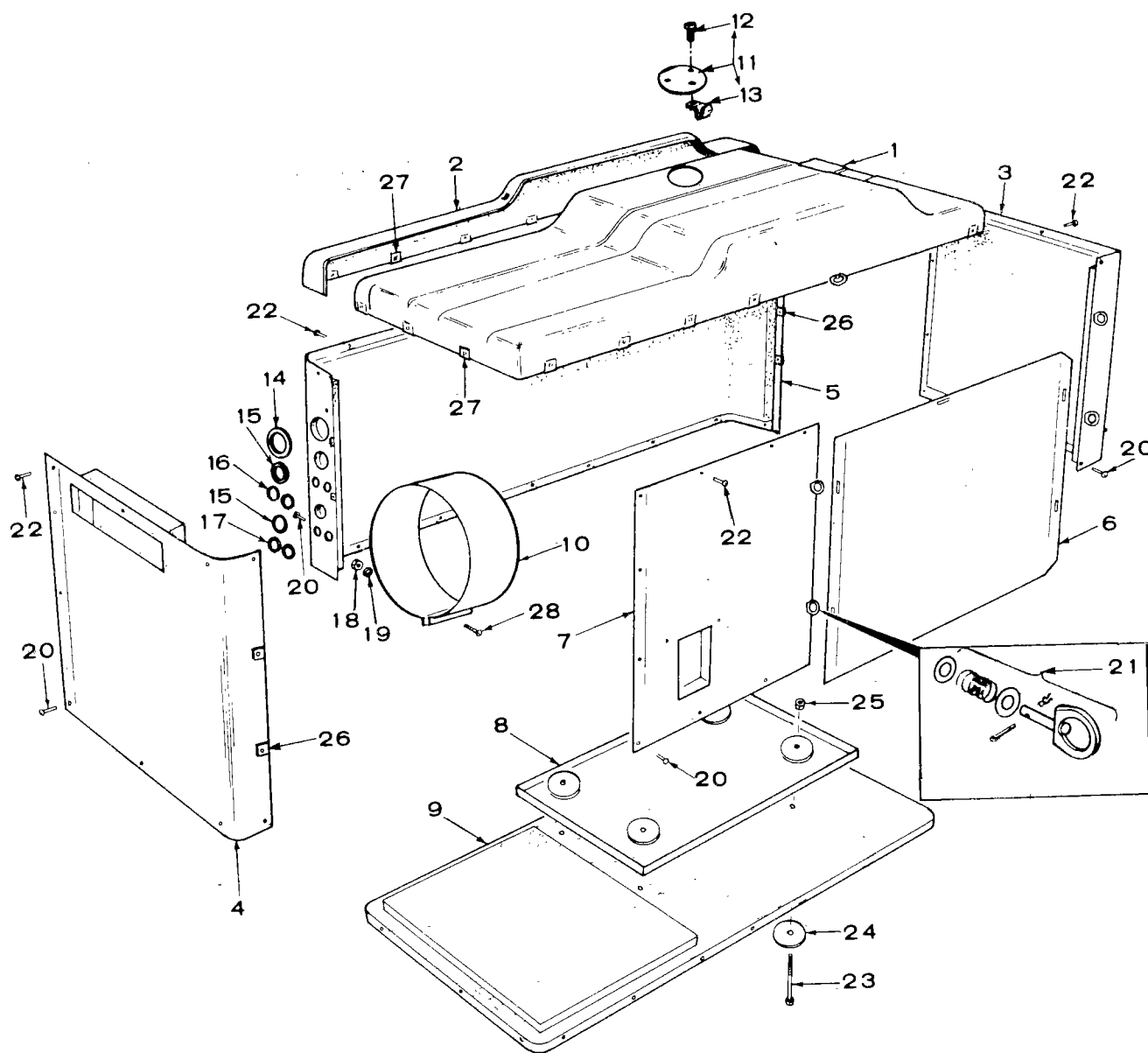
**NOTE:** This pump used on sets with optional Keel Cooling

REF. NO.	PART NO.	QTY. USED	PART DESCRIPTION
	132-0074	1	Pump, Water
	132-0093	1	Repair Kit, Water Pump - Includes Parts Marked *
1	132-0143	1	Pedestal
2		1	Body (Not Sold Separately)
3	132-0145	1	Cover
4	132-0087	1	Impeller
5	132-0088	1	*Gasket, Cover
6	810-0099	8	*Screw, Machine - Round Head, Brass (#10-32 x 7/16")
7	132-0089	1	*Shaft and Bearing Assembly
8	132-0101	1	*Seal, Mechanical
9	132-0091	1	*Ring, Seal Wear
10	132-0092	1	*Cap, Wear Ring
11	132-0138	1	Screw, Cap - Hex Head
12	132-0140	1	Nut, Hex
13	132-0139	1	Washer, Lock - Spring
14	132-0132	1	Ring, Snap

\* - Parts Included in 132-0093 Repair Kit



# SOUND SHIELD HOUSING - OPTIONAL



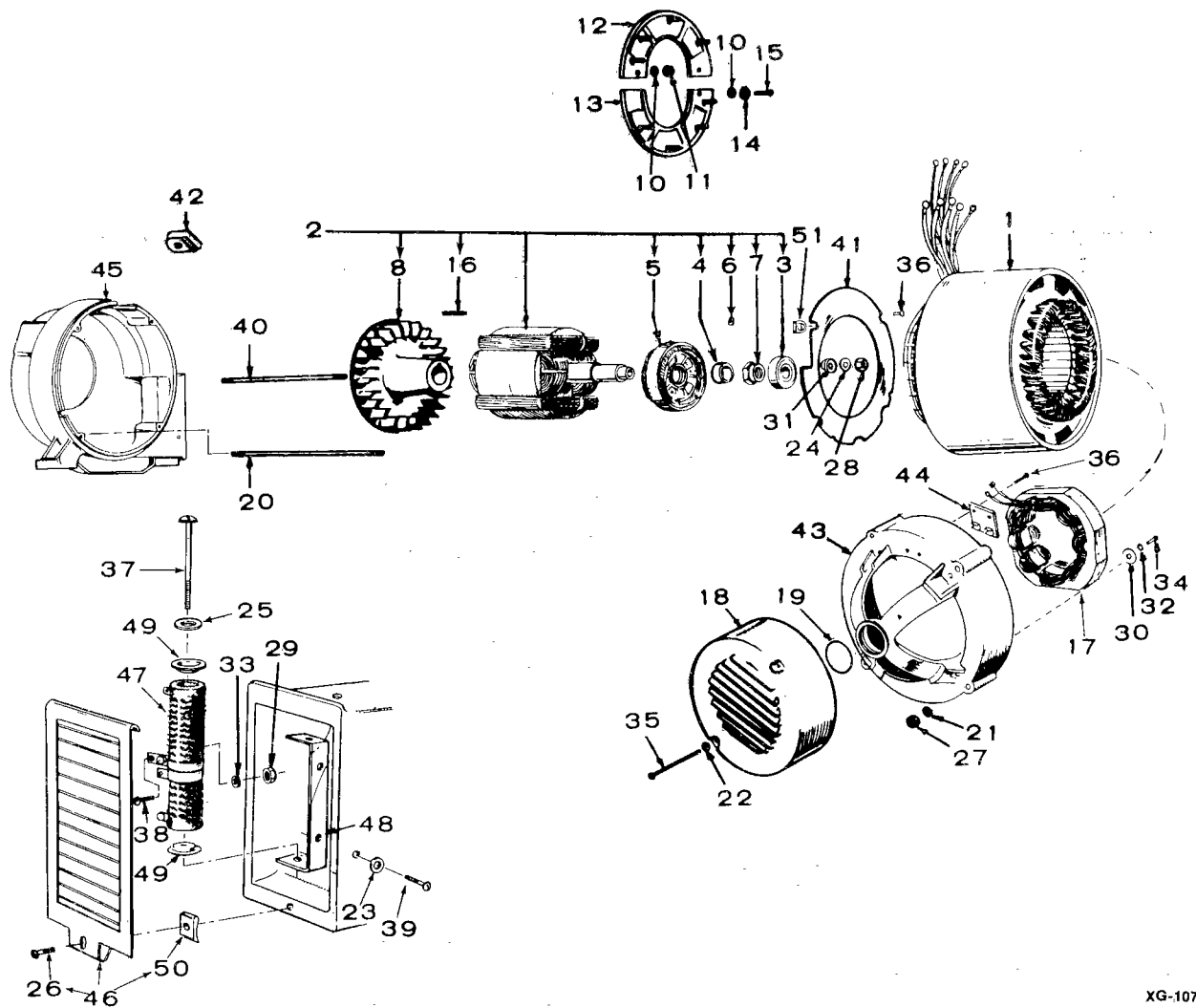
M-1209

## SOUND SHIELD HOUSING - OPTIONAL

REF. NO.	PART NO.	QTY. USED	PART DESCRIPTION
	405-1482	1	Housing Kit, Sound Shield - Includes All Parts Listed Below Plus Related Air Intake System Parts
1	405-1474	1	Panel Assembly, Top (Insulated) Includes (1) Folding Handle and (11) Speed Nuts
2	405-1471	1	Molding Assembly, Corner (Insulated) Includes (9) Speed Nuts
3	405-1454	1	Panel Assembly, Engine End (Insulated) Includes (2) Folding Handles
4	405-1446	1	Panel Assembly, Generator End (Insulated) Includes (2) Speed Nuts
5	405-1468	1	Panel Assembly, Back (Insulated) Includes (4) Speed Nuts
6	405-1456	1	Panel, Access (Insulated)
7	405-1466	1	Panel Assembly, Door (Insulated) Includes (2) Folding Handles
8	405-1431	1	Pan, Drip
9	405-1480	1	Base, Mounting (Insulated)
10	405-2209	1	Band, Air Duct Adapter
11	405-1478	1	Cover Assembly, Access (Includes Parts Marked *)
12	815-0562	3	*Screw, Pan Head - Cross Recessed (#10 x 5/16")
13	870-0261	3	*Nut, Speed (#8-32)
14	508-0115	1	Grommet, Rubber (2-1/2" Hole) Exhaust Line
15	508-0004	2	Grommet, Rubber (1-3/8" Hole) Water Inlet Lines
16	508-0071	2	Grommet, Rubber (7/8" Hole) Battery Cables
17	508-0008	2	Grommet, Rubber (13/16" Hole) Fuel Inlet and Return Lines
18	870-0053	1	Nut, Hex (#10-32)
19	850-0030	1	Washer, Lock - Spring (#10)
20	812-0150	18	Screw, Machine - Round Head (1/4-20 x 5/8") Panels to Base
21	406-0343	5	Handle, Folding
22	808-0053	26	Screw, Round Head - Sheet Metal (#14 x 3/4")
23	800-0084	4	Screw, Cap - Hex Head (7/16-14 x 4-1/2")
24	526-0195	4	Washer, Flat (29/64" ID x 3-1/4" OD x 1/8" Thk)
25	862-0004	4	Nut, Hex (7/16-14)
26	870-0107	6	Nut, Speed - Type J
27	870-0197	20	Nut, Speed - Type J
28	813-0105	1	Screw, Machine - Round Head (#10-32 x 1")

\* - Parts Included in 405-1478 Access Cover Assembly

# GENERATOR (24 VOLT DC) - OPTIONAL



XG-1074

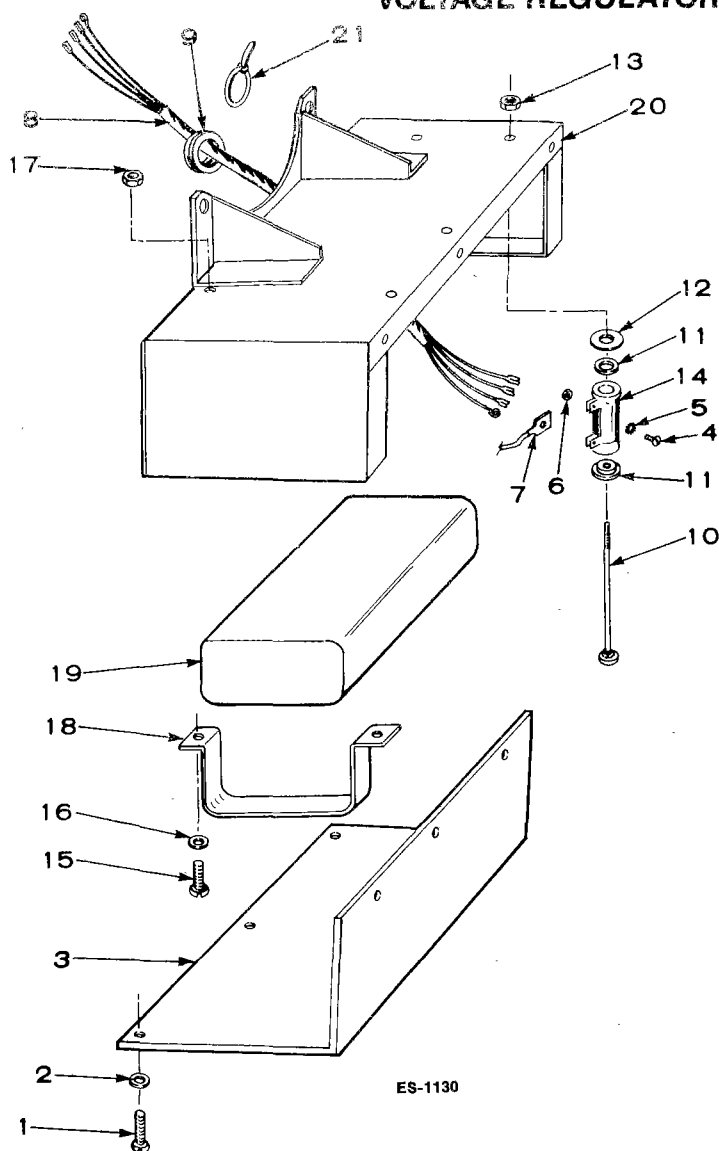
## GENERATOR (24 VOLT DC) - OPTIONAL

REF. NO.	PART NO.	QTY. USED	PART DESCRIPTION	REF. NO.	PART NO.	QTY. USED	PART DESCRIPTION
1	STATOR, GENERATOR			31	232-0200	1	Washer - Cone Shaped (Special) Rotor Through Stud
	220-2205	1	50 Hertz Single Phase	32	853-0013	2	Washer, Lock (1/4" ET) - Exciter Stator
	220-2155	1	Three Phase	33	856-0003	1	Washer, Lock (#10 EIT) - Resistor Tap
	220-2197	1	60 Hertz Single Phase	34	800-0004	2	Screw, Cap - Hex Head (1/4-20 x 5/8") - Exciter Stator Mounting
	220-2147	1	Three Phase	35	SCREW, MACHINE - ROUND HEAD (End Bell Cover Mounting)		
2	201-2155	1	Rotor Assembly, Generator (Includes Parts Marked *)		812-0165	2	Sets Without Overspeed Switch (1/4-20 x 4-1/2")
3	510-0112	1	*Bearing, Rotor		812-0167	2	Sets With Overspeed Switch (1/4-20 x 6")
4	232-2398	1	*Spacer, Bearing	36	815-0194	6	Screw, Hex Head - Thread Cutting with ET (#10-32 x 3/8") Board (2) and Baffle (4) Mounting
5	201-2151	1	*Rotor, Exciter	37	812-0169	1	Screw, Machine - Round Head (1/4-20 x 5-1/2") - Resistor Through
6	515-0094	1	*Key, Exciter Rotor	38	811-0098	1	Screw, Machine - Round Head (Brass) (#10-32 x 3/8") - Resistor Tap
7	870-0284	1	*Nut, Exciter Rotor Locking	39	800-0004	2	Screw, Cap - Hex Head (1/4-20 x 5/8") - Resistor Bracket
8	205-0105	1	*Fan, Generator	40	520-0787	1	Stud, Rotor Through
10	526-0008	12	*Washer, Flat (13/64" ID x 7/16" OD x 1/32" Thk)	41	234-0462	1	Baffle, Air
11	870-0131	8	*Nut, Hex (#10-32)	42	508-0112	1	Grommet, Rubber - Generator Adapter (2-3/4" x 1-7/8")
12	358-0069	1	*Rectifier Assembly - Positive	43	211-0237	1	Bell, End
13	358-0070	1	*Rectifier Assembly - Negative	44	232-2418	1	Board, Connection
14	853-0008	4	*Washer, Shakeproof (#10)	45	231-0171	1	Adapter, Generator
15	813-0100	4	*Screw, Round Head (#10-32 x 1/2")	46	234-0494	1	Cover Assembly, Air Outlet (Includes Parts Marked #)
16	515-0103	1	*Key, Fan to Rotor	47	304-0521	1	Resistor, Tapped - Adjustable
17	220-2009	1	Stator, Exciter	48	232-2399	1	Bracket, Resistor Mounting
18	COVER, END BELL			49	304-0006	2	Washer, Centering - Resistor Mounting
	234-0185	1	Sets Without Overspeed Switch	50	870-0177	1	#Nut, Speed (#10)
	234-0498	1	Sets With Overspeed Switch	51	508-0095	1	Grommet, Rubber - Air Baffle (25/32" x 21/32")
19	509-0094	1	Seal, Bearing ("O" Ring)				
20	520-0795	4	Stud, Generator Through				
21	850-0050	4	Washer, Lock - Spring (3/8") - Generator Through Stud				
22	850-0040	2	Washer, Lock - Spring (1/4") - End Bell Cover				
23	850-0040	2	Washer, Lock - Spring (1/4") - Resistor Bracket				
24	850-0055	1	Washer, Lock - Spring (7/16") - Rotor Through Stud				
25	853-0013	1	Washer, Lock (1/4" ET) - Resistor Through Screw				
26	809-0046	1	#Screw, Sheet Metal - Round Head (#10 x 3/4")				
27	862-0011	4	Nut, Hex (3/8-16) - Generator Through Stud				
28	870-0203	1	Nut, Hex (7/16-20) - Rotor Through Stud				
29	871-0010	1	Nut, Hex - Brass (#10-32) Resistor Tap				
30	526-0260	2	Washer, Flat (Special) - Exciter Stator				

\* - Parts Included in 201-2155 Generator Rotor Assembly.

# - Parts Included in 234-0494 Cover Assembly.

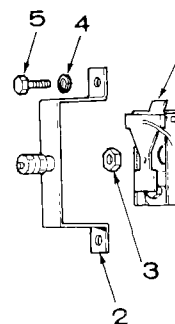
## VOLTAGE REGULATOR FILTER - OPTIONAL



REF. NO.	PART NO.	QTY. USED	PART DESCRIPTION
1	813-0098	6	Screw, Machine - Round Head (#10-32 x 3/8")
2	850-0030	6	Washer, Lock - Spring (#10)
3	232-2463	1	Cover, Housing
4	815-0001	4	Screw, Machine - Binding Head Brass (#6-32 x 1/4")
5	853-0003	4	Washer, Lock - ET (#6)
6	860-0006	4	Nut, Hex (#6-32)
7	332-1279	4	Terminal, Lug
8	338-1165	1	Harness, Wiring
9	508-0071	1	Grommet, Rubber
10	813-0112	2	Screw, Machine - Round Head (#10-32 x 2-1/2")
11	304-0015	4	Washer, Centering
12	304-0292	2	Insulator, Resistor
13	870-0053	2	Nut, Hex (#10-32)
14	304-0120	2	Resistor, Fixed (2 Ohm, 25 Watt)
15	812-0079	4	Screw, Machine - Round Head (#8-32 x 1/2")
16	850-0025	4	Washer, Lock - Spring (#8)
17	860-0008	4	Nut, Hex (#8-32)
18	312-0198	2	Bracket, Mounting - Capacitor
19	312-0197	1	Capacitor
20	232-2462	1	Housing, Filter
21	332-0942	2	Tie, Cable
	625-1304	—	Diagram, Wiring

## OVERSPEED SWITCH - OPTIONAL

REF. NO.	PART NO.	QTY. USED	PART DESCRIPTION
1	SWITCH, OVERSPEED		
	150-0956	1	60 Hertz Sets
	150-1661	1	50 Hertz Sets
2	150-1446	1	Bracket and Point Assembly
3	868-0004	1	Nut, Jam - Hex Head (7/16-20)
4	850-0040	2	Washer, Lock - Spring (1/4")
5	800-0003	2	Screw, Cap - Hex Head (1/4-20 x 1/2")

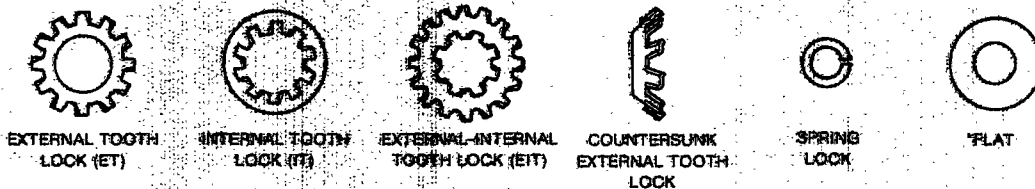


ES-1132

# HARDWARE IDENTIFICATION

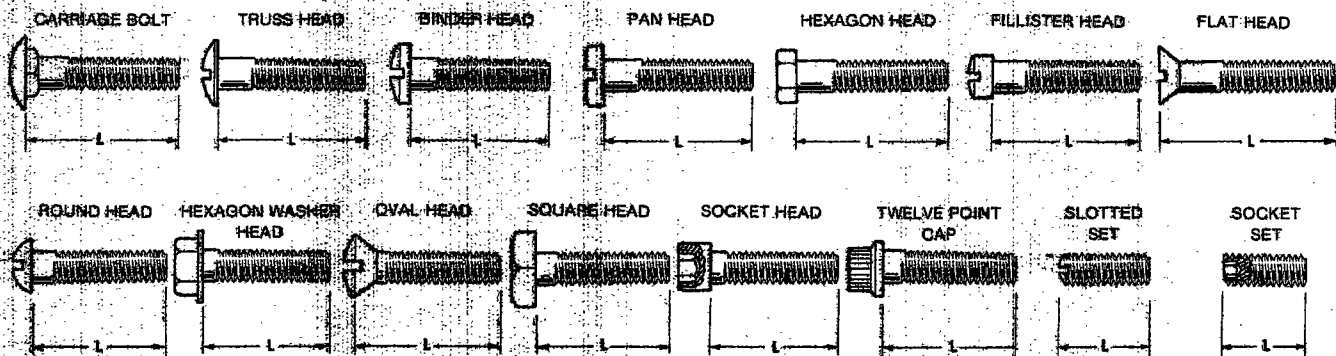
Illustrated hardware items are only for identification purposes. All hardware items listed throughout this parts catalog are steel SAE grade five (5) or lower (zinc plated with clear chromate dip) unless parts description indicates differently. All dimensions are in inches.

## WASHER TYPES



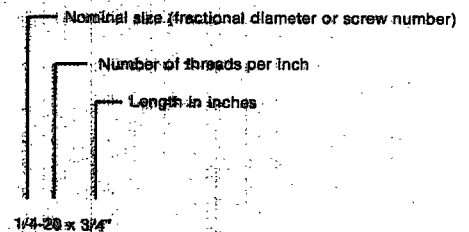
\* Flat washer dimensions given are: Inside Diameter (ID), Outside Diameter (OD) and Thickness (Thk).

## BOLT AND SCREW TYPES



L - Measure length between these points.

### INTERNAL DRIVE TYPES



## NUT TYPES





Onan Corporation  
1400 73rd Avenue N.E.  
Minneapolis, Minnesota 55432

Telephone: (612) 574-5000  
Telex: 275477  
Cable: ONAN