



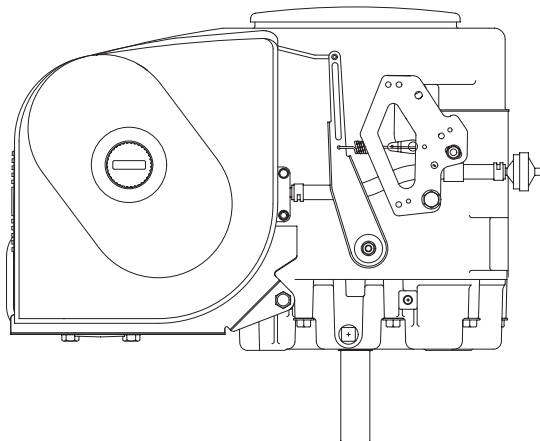
Engine

Parts Catalog

Gasoline

E124V-N
E125V-N
E140V-N

OLV13
ZXV390



Printed in U.S.A.

970-0200B
12-98 (Spec A-E)
Replaces 11-97 (Spec A-E)

MODEL IDENTIFICATION

To avoid errors or delay in filling your parts order, always give the MODEL, SPEC NO. and SERIAL NO. from the Onan nameplate.

For handy reference, insert your nameplate information in the spaces below.

MODEL AND SPEC NO.

SERIAL NO.

DIGITAL CONTROL SOFTWARE VERSION
AND DATE (IF APPLICABLE)

SAFETY PRECAUTIONS

The following symbols are used in Onan manuals to alert users to the potentially dangerous conditions relating to maintenance of equipment and replacement of parts. Please read and observe.



This symbol warns of immediate hazards which will result in severe personal injury or death.



This symbol refers to a hazard or unsafe practice which can result in severe personal injury or death.



This symbol refers to a hazard or unsafe practice which can result in severe personal injury or product or property damage.

PRODUCT SAFETY PRECAUTIONS



Service and repair of Onan equipment must be performed by trained, experienced personnel only. Improper service or repair may result in property damage, severe personal injury or death. Do not use this catalog as a guide to servicing your equipment. Read and follow the IMPORTANT SAFETY INSTRUCTIONS in the Service Manual appropriate for the equipment you are working on.



Contact with USED ENGINE OILS has been identified by a United States federal agency and some USA state agencies as causing CANCER or REPRODUCTIVE TOXICITY. When checking or changing engine oils take all necessary precautions not to ingest, breathe the fumes or contact the used oil.



Contact with ASBESTOS has been identified by a United States federal agency and some USA state agencies as causing CANCER or REPRODUCTIVE TOXICITY. When handling engine gaskets take all necessary precautions not to ingest, breathe or contact the dust from the gaskets! Use adequate ventilation and wear protective gloves, masks and clothing!



Contact with BENZINE and LEAD, found in gasoline, fuel additives and solvents has been identified by a United States federal agency and some USA state agencies as causing CANCER or REPRODUCTIVE TOXICITY. When checking, draining or adding gasoline and fuel additives or using solvents take all necessary precautions not to ingest, breathe the fumes or contact the liquids. Use adequate ventilation and wear protective gloves, masks and protective clothing!

Introduction

This parts manual applies to the standard Elite horizontal engine as listed in the Engine Data Table. Parts are arranged in groups of related items and each illustrated part is identified by a reference number corresponding to the same reference number in the parts list. Parts illustrations are typical. Throughout this manual, left and right sides are determined by facing the oil cooler (front) end of the engine.

Using the MODEL and SPECIFICATION NUMBER from the nameplate, consult the SALES OPTION CODE TABLE in the back of the book to identify factory installed parts that are unique to your engine (*Note: The diagonal line (/) in the model and specification number separates engine characteristics from the specification number/letter. The specification number denotes customer requested features. The specification letter advances [A to B, B to C, etc] with major manufacturing changes.)

Engine Data Table

<u>Model/Spec No.</u>	<u>Rating</u>
E124V-N/*	12.5/14 Horsepower
E125V-N/*	12.5 Horsepower
E140V-N/*	14.0 Horsepower
OLV13/*	12.5/14 Horsepower
ZXV390/*	12.5/14 Horsepower

Index

- Adapter Assy, Long Oil Fill Tube, **35**
- Adapter, Air Cleaner, **29**
- Adapter, Oil Filter, **19**
- Alternator (Begin Spec B), **11**
- Alternator (Spec A), **10**
- Arm Assy, Rocker, **15**
- Armature, Starter, **30**
- Arrester, Spark, **42**

- Ball, Steel, **19**
- Base, Oil (Begin Spec B), **19**
- Base, Oil (Spec A), **17**
- Bearing, Balancer Shaft Lower (Spec A), **17**
- Bearing, Balancer Shaft Lower (Begin Spec B), **19**
- Bearing, Balancer Shaft Upper, **5**
- Bearing, Camshaft, **5**
- Bearing, Crankshaft Lower (Begin Spec B), **19**
- Bearing, Crankshaft Lower (Spec A), **17**
- Bearing, Crankshaft Upper, **5**
- Block, Cylinder, **5**
- Bracket, Carburetor Guard, **38**
- Bracket, Muffler Guard, **42**
- Bracket, Short Oil Fill Support, **34**
- Breather, **15**
- Bushing, Voltage Regulator, **25**

- Camgear, **8**
- Camshaft Assy, **8**
- Cap, 110V Starter Drive, **31**
- Cap, Spark Plug, **15**
- Carburetor, Gasoline (Begin Spec C), **27**
- Carburetor, Gasoline (Spec A, B), **25**
- Case, Recoil, **32**
- Case, Recoil Spring, **32**
- Cleaner, Air (Begin Spec C), **27**
- Cleaner, Air (Spec A, B), **29**
- Clip, Fuel Hose Wire, **24**
- Clip, Governor Link, **23, 25**
- Clip, Link, **27**
- Clip, Oil Drain Hose, **19**
- Clip, Rocker Arm Retainer, **15**
- Clutch, Starter Sub, **30**
- Components, 110V Starter, **31**
- Components, 12V Starter, **30**
- Components, Recoil Starter, **32**
- Contact, Switch, **23**
- Cord, Extension, **47**
- Cover, Air Cleaner (Begin Spec C), **27**
- Cover, Air Cleaner (Spec A, B), **29**
- Cover, Air Cleaner Element (Begin Spec C), **27**
- Cover, Air Cleaner Element (Spec A,B), **29**
- Cover, Oil Pickup Screen, **19**
- Cover, Oil Pump (Begin Spec B), **19**
- Cover, Oil Pump (Spec A), **17**
- Cover, Precleaner, **37**
- Cover, Starter, **30**
- Cover, Starter Hole, **43**
- Cover, Valve, **15**

- Crankshaft (Begin Spec B), **7**
- Crankshaft (Spec A), **6**

- Definitions, Sales Option Code, **48**
- Deflector, Air Cleaner Air, **29**
- Deflector, Cylinder Housing Air, **38**
- Dog, Recoil, **32**

- Elbow, 90 Deg Fuel Pump, **24**
- Elbow, Breather, **29**
- Elbow, Cylinder Block Hose, **5**
- Elbow, Exhaust, **41, 42**
- Elbow, Intake (Begin Spec C), **27**
- Elbow, Intake (Spec A, B), **25**
- Element, Air Cleaner (Spec A, B), **29**
- Element, Air Cleaner (Spec C), **27**

- Filter, Fuel (Spec A), **25**
- Filter, Fuel (Spec B, C), **24**
- Filter, Oil, **19**
- Filter, Precleaner, **37**
- Flange, Oil Drain, **17**
- Flyweight, Camgear, **8**
- Frame, Commutator, **30**
- Frame, Starter, **30**

- Gasket, Carburetor (Begin Spec C), **27**
- Gasket, Carburetor (Spec A, B), **25, 29**
- Gasket, Carburetor Insulator, **27**
- Gasket, Cylinder Head, **15**
- Gasket, Cylinder Head Cover, **15**
- Gasket, Intake (Begin Spec C), **27**
- Gasket, Intake (Spec A, B), **25**
- Gasket, Muffler, **41, 42**
- Gasket, Oil Base, **19**
- Gear, Balancer (Begin Spec B), **7**
- Gear, Balancer (Spec A), **6**
- Gear, Crankshaft (Begin Spec B), **7**
- Gear, Crankshaft (Spec A), **6**
- Gear, Governor (Begin Spec B), **19**
- Gear, Governor (Spec A), **17**
- Governor (Begin Spec B), **23**
- Governor (Spec A), **21**
- Grommet, Air Cleaner, **29**
- Grommet, Fuel Pump, **24**
- Guard, Muffler, **42**
- Guard, Stationary, **37**
- Guide, Valve, **15**

- Handle Assy, Recoil, **32**
- Harness, Alternator Wiring (Spec A), **10**
- Harness, Engine, **44, 45, 46**
- Head, Cylinder, **15**
- Hose, **24**
- Hose, Breather, **29**
- Hose, Fuel, **24, 25**
- Hose, Fuel Pump Pulse, **24**
- Hose, Fuel Pump to Carburetor, **24**

Index

Hose, Oil Drain, **19**
Housing, Air Cylinder, **39**
Housing, Blower, **37**
Housing, Starter, **30**

Indicator, Oil Level (Begin Spec B) (Long Tube), **35**
Indicator, Oil Level (Begin Spec B) (Short Tube), **34**
Indicator, Oil Level (Spec A), **33**
Insulator, Gasoline Carburetor (Begin Spec C), **27**
Insulator, Gasoline Carburetor, (Spec A,B), **25**
Insulator, Starter, **30**
Insulator, Switch, **23**

Jet, Altitude, **27**

Key, Balancer Gear, **6**
Key, Blower Wheel, **13**
Key, Camgear, **8**
Key, Crankshaft Gear (Begin Spec B), **7**
Key, Crankshaft Gear (Spec A), **6**
Kit, 110V Electric Starter, **5**
Kit, 110V Starter Drive, **31**
Kit, Air Cleaner, **29**
Kit, Carburetor Float (Spec C, D), **27**
Kit, Carburetor Rebuild (Spec C, D), **27**
Kit, Carburetor Repair (Spec A, B), **25**
Kit, Connecting Rod, **9**
Kit, Electric Starter Conversion, **47**
Kit, Engine Gasket, **47**
Kit, Exhaust Muffler, **41**
Kit, Extension Cord, **47**
Kit, Float (Spec A, B), **25**
Kit, Governor Sleeve, **19**
Kit, Muffler, **41, 42**
Kit, Piston, **9**
Kit, Recoil Starter, **32**
Kit, Stationary Guard, **37**
Kit, Valve Grind Gasket, **47**
Knob, Air Cleaner Cover (Begin Spec C), **27**
Knob, Air Cleaner Cover (Spec A, B), **29**
Knob, Inner Air Cleaner Cover (Begin Spec C), **27**
Knob, Inner Air Cleaner Cover (Spec A,B), **29**

Labels, **47**

Lever, Governor (Begin Spec C), **23**
Lever, Governor (Spec A), **21**
Lever, Governor (Spec B), **23**
Lever, Starter Drive, **30**
Link, Choke (Begin Spec B), **23**
Link, Choke (Spec A), **21**
Link, Throttle (Begin Spec C), **23**
Link, Throttle (Spec A), **21**
Link, Throttle (Spec B), **23**
Lock, Valve, **15**

Magneto, **5**
Muffler (Code 21BP, 21BS, 21BU, 21BV), **41**
Muffler (Code 21BP, 21BS, 21BU), **40**
Muffler (Code 21CG), **42**

O'Ring, Oil Fill Adapter (Long Tube), **35**
O'Ring, Oil Level Indicator (Long Tube), **35**
O'Ring, Oil Pump, **19**
Oil Fill (Begin Spec B) (Long Tube), **35**
Oil Fill (Begin Spec B) (Short Tube), **34**
Oil Fill (Spec A), **33**

Paint, **47**
Pan, Air Cleaner, **27**
Pickup, Oil, **17**
Pin, Camgear, **8**
Pin, Cylinder Block Alignment, **5**
Pin, Cylinder Block Hollow Dowel, **5**
Pin, Governor Cotter, **21, 23**
Pin, Hollow Dowel, **15**
Pin, Piston, **9**
Pin, Rocker Arm Dowel, **15**
Piston, **9**
Plate, Air Deflector (Begin Spec C), **27**
Plate, Throttle (Begin Spec B), **23**
Plate, Throttle (Spec A), **21**
Plug, Countersunk Block, **5**
Plug, Fuel Pump Hole Pipe, **24**
Plug, Oil Base, **19**
Plug, Oil Base Pipe (Spec A), **17**
Plug, Oil Drain, **17**
Plug, Spark, **15**
Pulley, Crank, **32**
Pump, Fuel (Spec B, C), **24**
Pump, Oil (Begin Spec B), **19**
Pump, Oil (Spec A), **17**

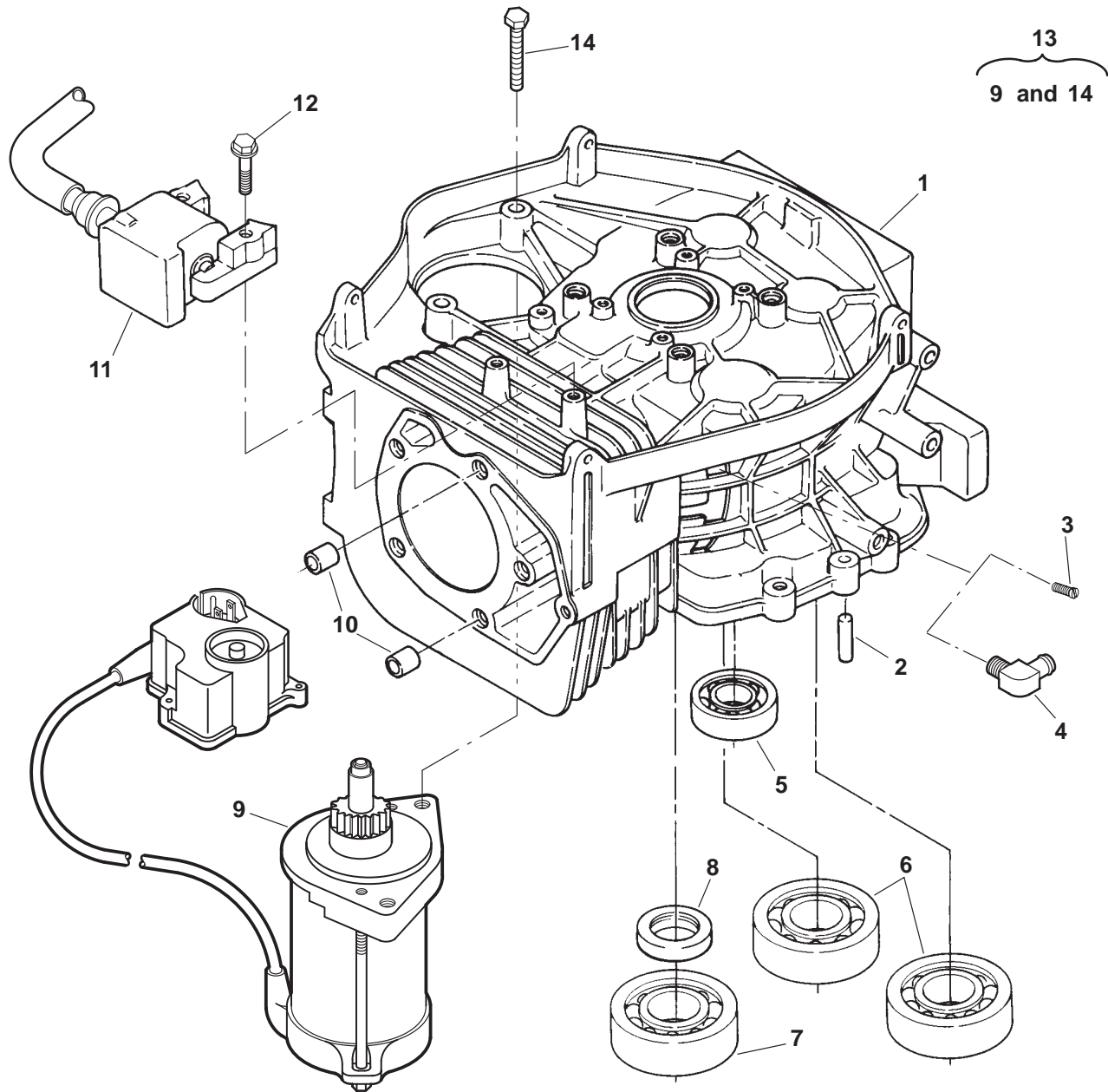
Rectifier, Bridge, **25**
Reel, Recoil, **32**
Regulator, Voltage, **25, 37**
Retainer, Muffler Bolt, **41, 42**
Retainer, Recoil, **32**
Retainer, Valve Spring, **15**
Ring Set, Piston, **9**
Ring, Governor Retaining, **23**
Ring, Oil Base Retaining, **19**
Ring, Piston Retaining, **9**
Ring, Valve Guide, **15**
Rod, Push, **15**

Sales Option Code Table, **49, 50**
Screen, Blower Wheel, **13**
Screen, Oil Pickup Shaft, **19**
Seal, Air Cleaner Spacer, **27**
Seal, Crankshaft Lower Oil, **19**
Seal, Crankshaft Upper Oil, **5**
Seal, Oil Fill, **35**
Seal, Valve Stem, **15**
Sealant, Thread, **47**
Shaft, Balancer (Begin Spec B), **7**
Shaft, Balancer (Spec A), **6**
Shaft, Camgear Flyweight, **8**
Shaft, Governor (Begin Spec B), **19**

Index

- Shaft, Governor (Spec A), **17**
- Shaft, Governor Lever, **8**
- Shaft, Rocker Arm, **15**
- Shim, Balancer Shaft (Begin Spec B), **7**
- Shim, Balancer Shaft (Spec A), **6**
- Shim, Camshaft, **8**
- Shim, Crankshaft (Begin Spec B), **7**
- Shim, Crankshaft (Spec A), **6**
- Sleeve, Governor (Begin Spec B), **19**
- Sleeve, Governor (Spec A), **17**
- Spacer, Throttle Plate (Begin Spec B), **23**
- Spacer, Throttle Plate (Spec A), **21**
- Spring, Choke Linkage (Begin Spec B), **23**
- Spring, Choke Linkage (Spec A), **21**
- Spring, Governor (Begin Spec B), **23**
- Spring, Governor (Spec A), **21**
- Spring, Recoil Brake, **32**
- Spring, Recoil Dog, **32**
- Spring, Recoil Spiral, **32**
- Spring, Relief Valve, **19**
- Spring, Throttle Link, **21**
- Spring, Valve, **15**
- Spud, Fuel Pump, **24**
- Starter Assy, Recoil, **32**
- Starter, 110V Components, **31**
- Starter, Electric, **5**
- Stator (Begin Spec B), **11**
- Stator (Spec A), **10**
- Stop, Governor, **17**
- Support, Carburetor, **27**
- Support, Oil Indicator, **33**
- Support, Precleaner (Spec 11531), **37**
- Switch, Magnetic, **30**
- Switch, Oil Pressure, **19**
- Swivel, Choke Lever (Begin Spec B), **23**
- Swivel, Choke Lever (Spec A), **21**
- Table, Sales Option Code, **49, 50**
- Tappet, **15**
- Terminal, Switch Contact, **23**
- Tube, Air Inlet (Spec 11531), **37**
- Tube, Breather (Begin Spec C), **27**
- Tube, Long Oil Fill, **35**
- Tube, Short Oil Fill, **34**
- Valve, Exhaust, **15**
- Valve, Intake, **15**
- Valve, Oil Drain, **19**
- Valve, Oil Relief, **17**
- Wheel, Blower, **13**
- Wrapper, Air Cleaner Element (Begin Spec C), **27**
- Wrapper, Air Cleaner Element (Spec A,B), **29**

Cylinder Block

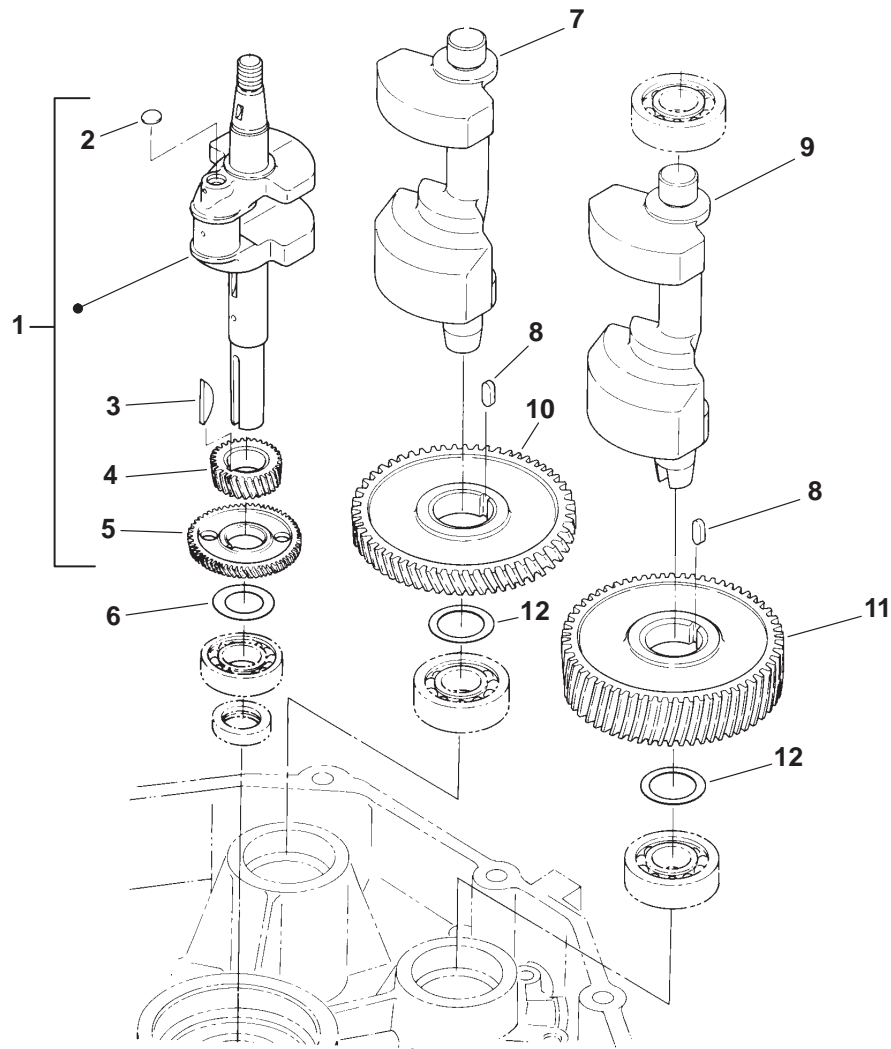


REF NO.	PART NO.	QTY USED	PART DESCRIPTION
1	—	1	Block, Cylinder (See Short Block Catalog #932-0109)
2	775-0074	2	Pin, Alignment
3	505-1426	2	Plug, Countersunk Head
4	502-0313	1	Elbow, 90° Hose (1/8NPT) (1/4 ID Hose)
5	510-0162	1	Bearing, Camshaft
6	510-0163	2	Bearing, Balancer Shaft Upper
7	510-0160	1	Bearing, Crankshaft Upper
8	509-0258	1	Seal, Crankshaft Upper Oil
9			Starter (See Separate Page for Components)
	191-2127	1	Code 33BC (110V)
	191-1906	1	Code 33AT (12V)

REF NO.	PART NO.	QTY USED	PART DESCRIPTION
10	110-3892	2	Pin, Hollow Dowel
11	166-0799	1	Magneto
	166-0835	1	All Specs Except 10964C, 11207C
12	815-0754	2	Spec 10964C, 11207C
			Bolt, Self-Tapping Hex Head (M6 x 1 x 27mm)
13	541-0489	1	Kit, 110V Electric Starter Mount (Includes Starter and Screws)
14	718-1814	2	Screw, Hex Head Cap (M8 x 1.25 x 50mm)

* — Parts Included in Camshaft Assy.

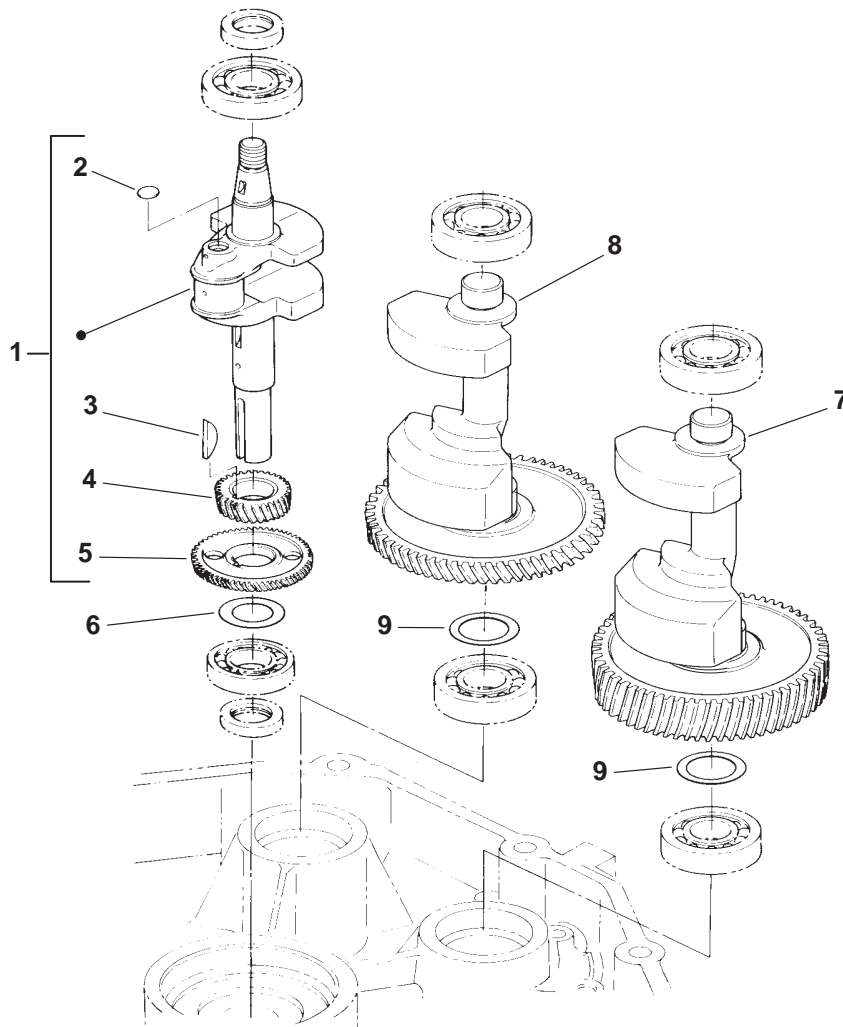
Crankshaft (Spec A)



REF NO.	PART NO.	QTY USED	PART DESCRIPTION	REF NO.	PART NO.	QTY USED	PART DESCRIPTION
1	104-1717	1	Crankshaft Assy (Includes Parts Marked *)	9	104-1724	1	Shaft, Balancer
2	104-1718	1	*Plug, Expansion	10	104-1722	1	Gear, Balancer
3	515-0293	1	*Key, Crankshaft Gear	11	104-1723	1	Gear, Balancer
4	104-1719	1	*Gear, Crankshaft	12			Shim, Balancer Shaft (Use as Required)
5	104-1720	1	*Gear, Balancer		104-1726-01	2	0.5mm Thick
6			Shim, Crankshaft (Use as Required)		104-1726-02	2	0.6mm Thick
	104-1721-01	1	0.2mm Thick		104-1726-03	2	0.7mm Thick
	104-1721-02	1	0.3mm Thick		104-1726-04	2	0.8mm Thick
	104-1721-03	1	0.4mm Thick		104-1726-05	2	0.9mm Thick
	104-1721-05	1	0.5mm Thick		104-1726-06	2	1.0mm Thick
	104-1721-07	1	0.7mm Thick		104-1726-07	2	1.2mm Thick
	104-1721-08	1	0.8mm Thick				
7	104-1725	1	Shaft, Balancer				
8	515-0296	2	Key, Balancer Gear				

* - Parts Included in Crankshaft Assy.

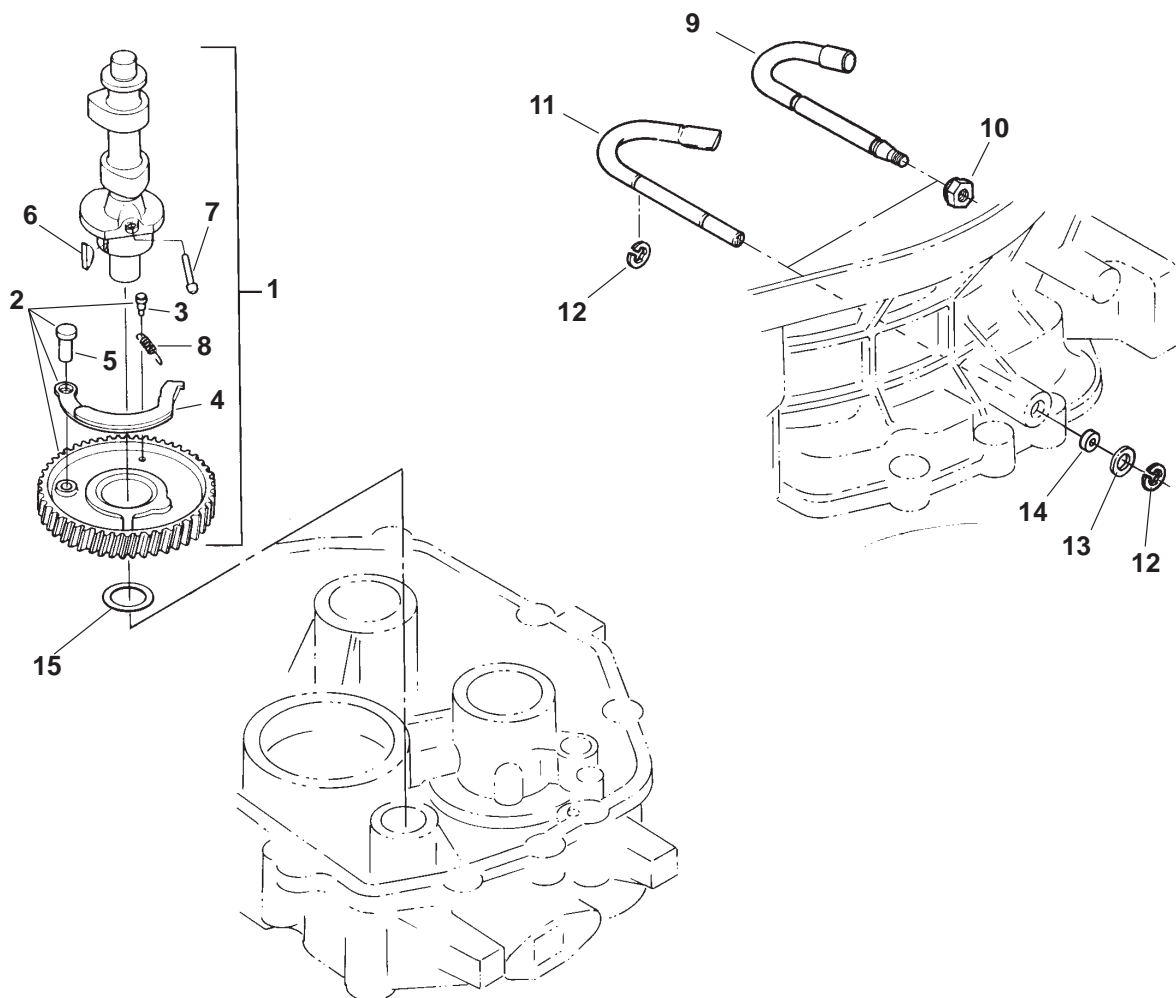
Crankshaft (Begin Spec B)



REF NO.	PART NO.	QTY USED	PART DESCRIPTION
1	104-1717	1	Crankshaft Assy (Includes Parts Marked *)
2	104-1718	1	* Plug, Expansion
3	515-0293	1	* Key, Crankshaft Gear
4	104-1719	1	* Gear, Crankshaft
5	104-1720	1	* Gear, Balancer
6			Shim, Crankshaft (Use as Required)
	104-1721-01	1	0.2mm Thick
	104-1721-02		0.3mm Thick
	104-1721-03	1	0.4mm Thick
	104-1721-05	1	0.5mm Thick
	104-1721-07	1	0.7mm Thick
	104-1721-08	1	0.8mm Thick

REF NO.	PART NO.	QTY USED	PART DESCRIPTION
7	104-1827-01	1	Shaft, Balancer (Includes Gear)
8	104-1827-02	1	Shaft, Balancer (Includes Gear)
9			Shim, Balancer Shaft (Use as Required)
	104-1809-01	2	0.5mm Thick
	104-1809-02	2	0.6mm Thick
	104-1809-03	2	0.7mm Thick
	104-1809-04	2	0.8mm Thick
	104-1809-05	2	0.9mm Thick
	104-1809-06	2	1.0mm Thick
	104-1809-07	2	1.2mm Thick

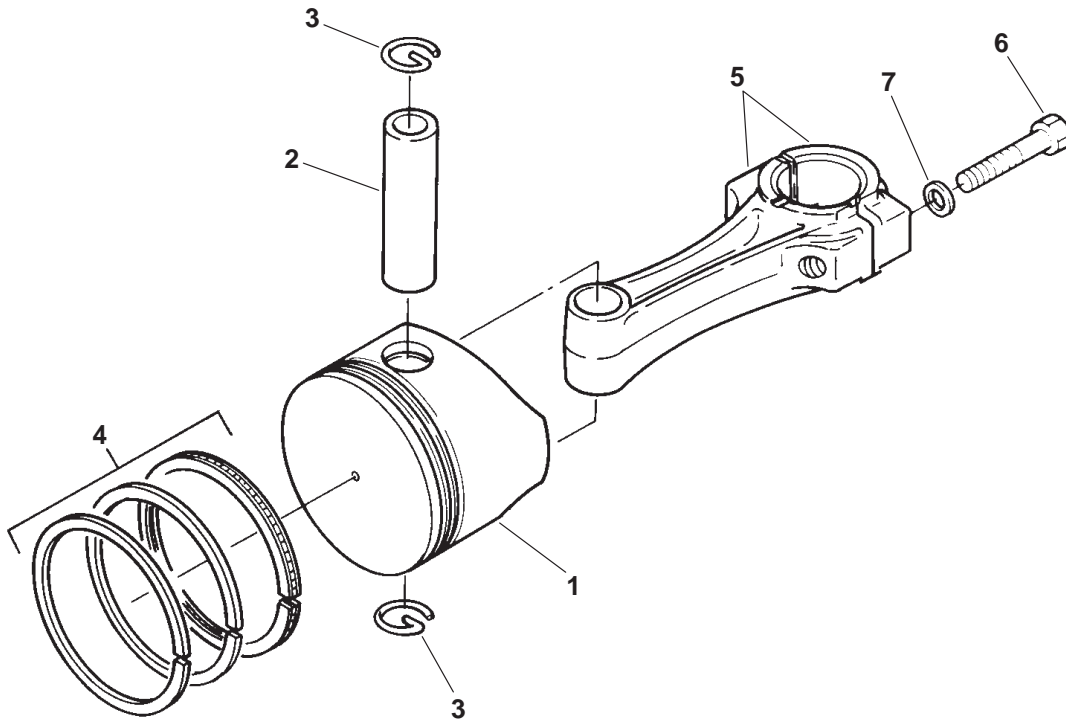
Camshaft



REF NO.	PART NO.	QTY USED	PART DESCRIPTION	REF NO.	PART NO.	QTY USED	PART DESCRIPTION
1			Camshaft Assy (Includes Parts Marked *)	11	150-2287	1	Shaft, Governor Lever (Includes Clip) (Spec A,B)
	105-0658	1	Spec A & B	12	518-0576	2	Clip, Retainer
	105-0693-02	1	Begin Spec C	13	740-1006	1	Washer, Flat (M8) (Spec A,B)
2	105-0657	1	*Camgear (Includes Gear, Flyweight, Flyweight Shaft and Pin)	14	509-0255	1	Seal, Governor Shaft Lever
3	150-2305	1	Pin	15			Shim, Camshaft (Use as Required)
4	150-2301	1	Flyweight		105-0649-01	1	0.5mm Thick
5	150-2302	1	Shaft, Flyweight		105-0649-02	1	0.6mm Thick
6	515-0294	1	*Key, Camgear		105-0649-03	1	0.8mm Thick
7	150-2304	1	*Pin, Decompression		105-0649-04	1	0.9mm Thick
8	150-2303	1	*Spring, Decompression		105-0649-05	1	1.0mm Thick
9	150-2529	1	Shaft, Governor Lever (Begin Spec C)		105-0649-06	1	1.2mm Thick
10	870-0506	1	Nut, Nylon Lock (M6 x 1) (Begin Spec C)				

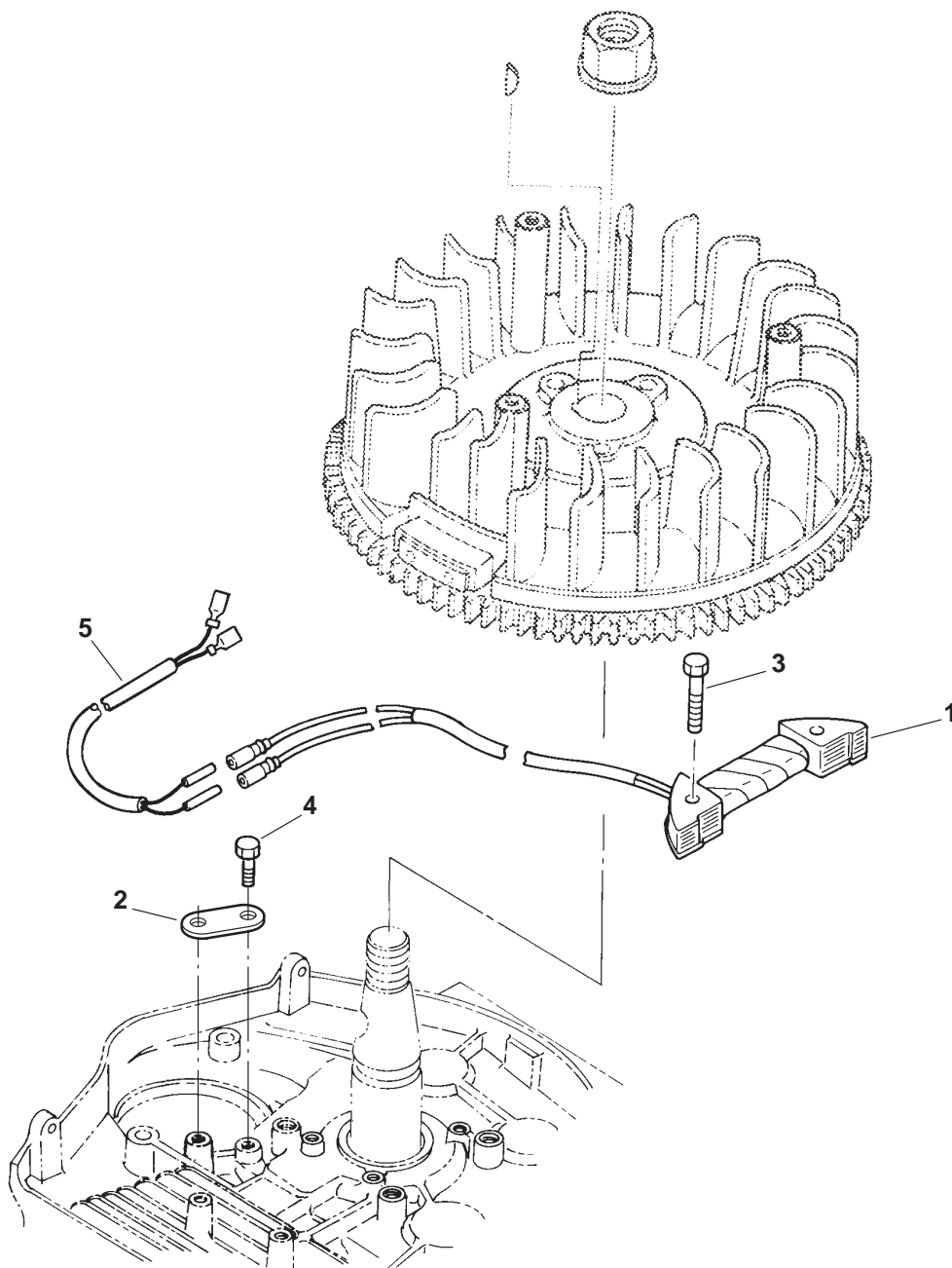
* - Parts Included in Crankshaft Assy.

Piston



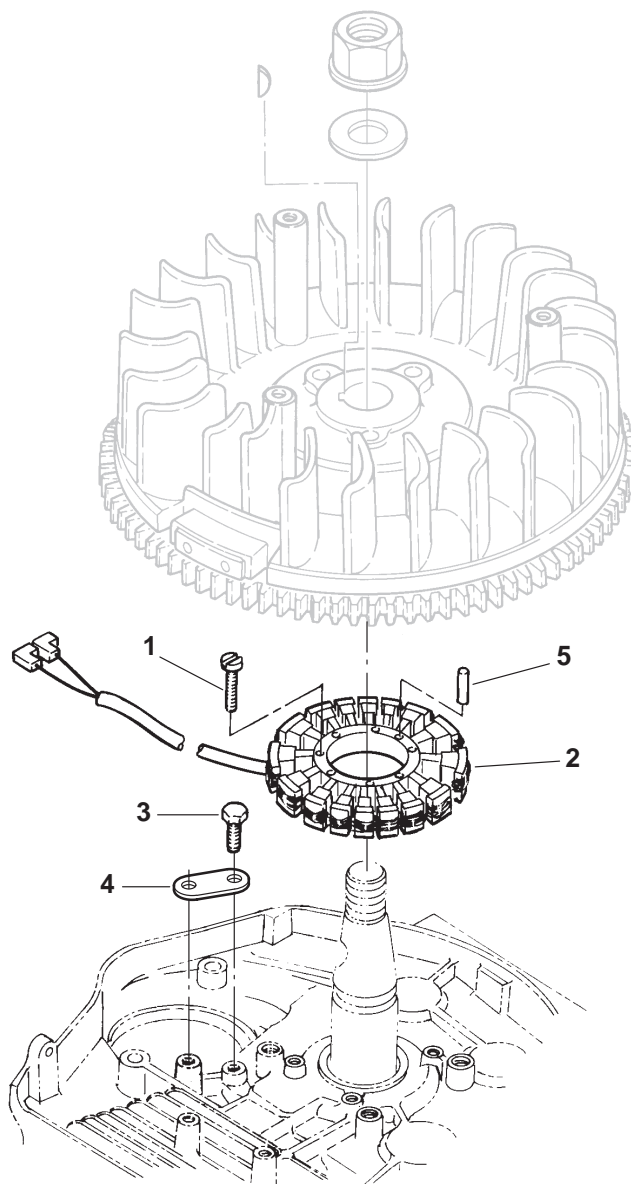
REF NO.	PART NO.	QTY USED	PART DESCRIPTION	REF NO.	PART NO.	QTY USED	PART DESCRIPTION
1			Kit, Piston (Includes Pin, Ring Set and Retaining Rings)	5			Kit, Connecting Rod (Includes Bolts and Washers)
	112-0276	1	Standard		114-0357	1	Standard
	112-0276-01	1	.25mm Oversize		114-0357-01	1	.25mm Undersize
	112-0276-02	1	.50mm Oversize		185-2627	1	.50mm Undersize
2	112-0244	1	Pin, Piston	6	114-0355	2	Bolt, Connecting Rod
3	112-0245	2	Ring, Retaining	7	114-0356	2	Washer, Connecting Rod
4			Ring Set, Piston				
	113-0330	1	Standard				
	113-0330-01	1	.25mm Oversize				
	113-0330-02	1	.50mm Oversize				

Alternator (Spec A)



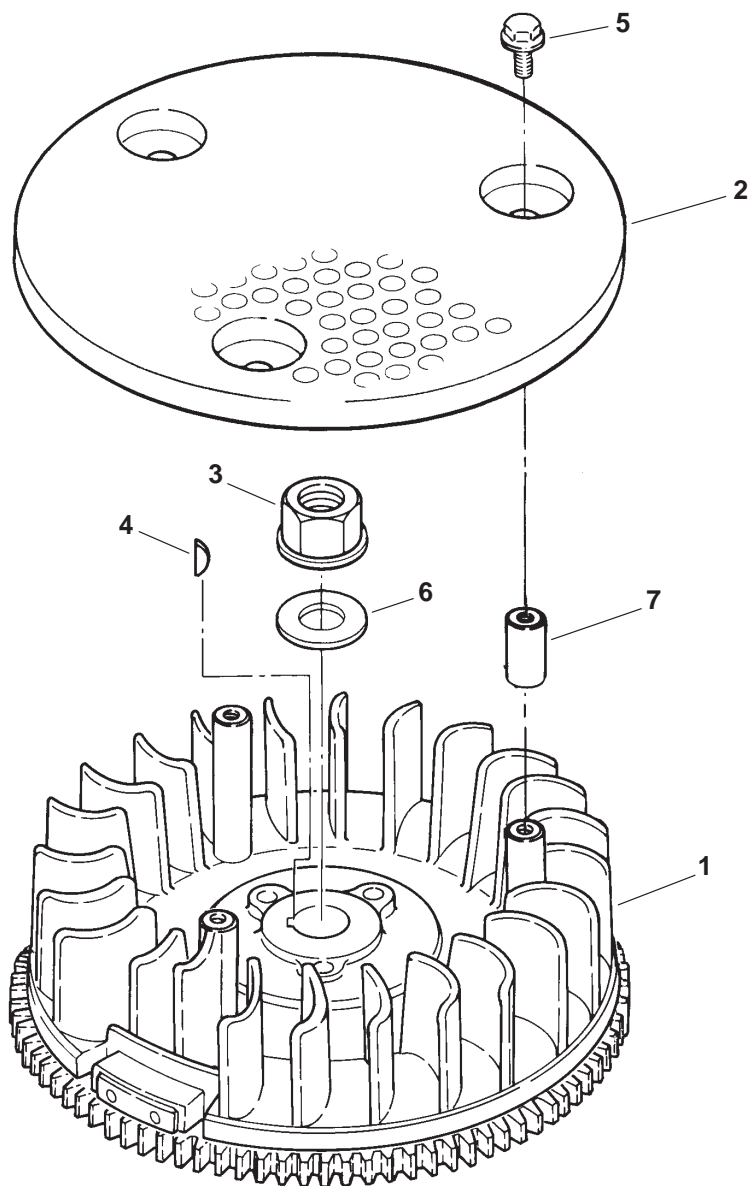
REF NO.	PART NO.	QTY USED	PART DESCRIPTION	REF NO.	PART NO.	QTY USED	PART DESCRIPTION
1	185-2666	1	Stator	4	815-0753	1	Bolt, Self-Tapping Hex Head (M6 x 14mm)
2	191-1967	1	Clamp, Cord	5	338-2524	1	Harness, Wiring (Stator to Voltage Regulator)
3	815-0754	2	Bolt, Self-Tapping Hex Head (M6 x 27mm)				

Alternator (Begin Spec B)



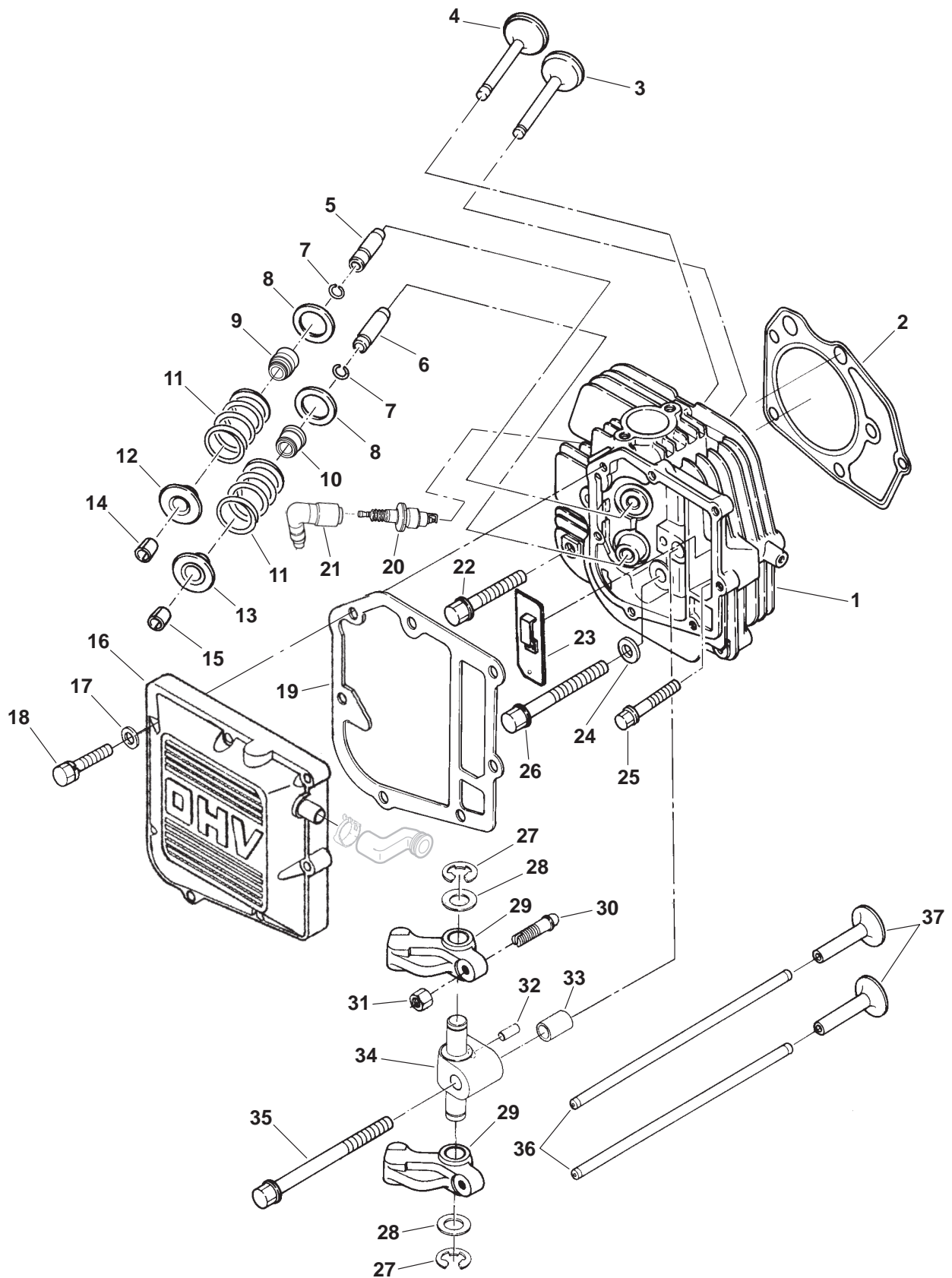
REF NO.	PART NO.	QTY USED	PART DESCRIPTION	REF NO.	PART NO.	QTY USED	PART DESCRIPTION
1	823-0003-03	2	Screw (M6 x 1 x 20mm) Pan Head Torx Drive	3	815-0753	1	Bolt, Self-Tapping Hex Head (M6 x 14mm)
	815-0638-01		Button Head Machine	4	191-1967	1	Clamp, Cord
2			Stator	5	775-0061	2	Pin, Alignment
	191-1456-02	1	Spec B All Specs Except 11301, 11308				
	191-2130		Spec 11301, 11308				
	191-1456-03	1	Begin Spec C				

Blower Wheel



REF NO.	PART NO.	QTY USED	PART DESCRIPTION	REF NO.	PART NO.	QTY USED	PART DESCRIPTION
1			Wheel, Blower (Includes Magnets and Ring Gear)	2	134-4737-50	1	Screen
	134-4775	1	Spec A	3	870-2060	1	Nut, Flange (M18)
			Begin Spec B	4	515-0295	1	Key
			With Alternator	5	800-2036	3	Screw, Hex Head Cap Spec A (M6 x 30mm)
	134-4899-00	1	8, 15, 20A – 6 Magnets (31AS, 31BB, 31BS)		718-1017	3	Begin Spec B (M6 x 1 x 10mm)
	134-4899-01	1	5A – 3 Magnets (31BN, 31BP)	6	526-0405	1	Washer, Flat
	134-4899-02	1	W/O Alternator (31BD) (No Magnets No Ring Gear)	7	370-4056	3	Spacer (Spec A)

Cylinder Head



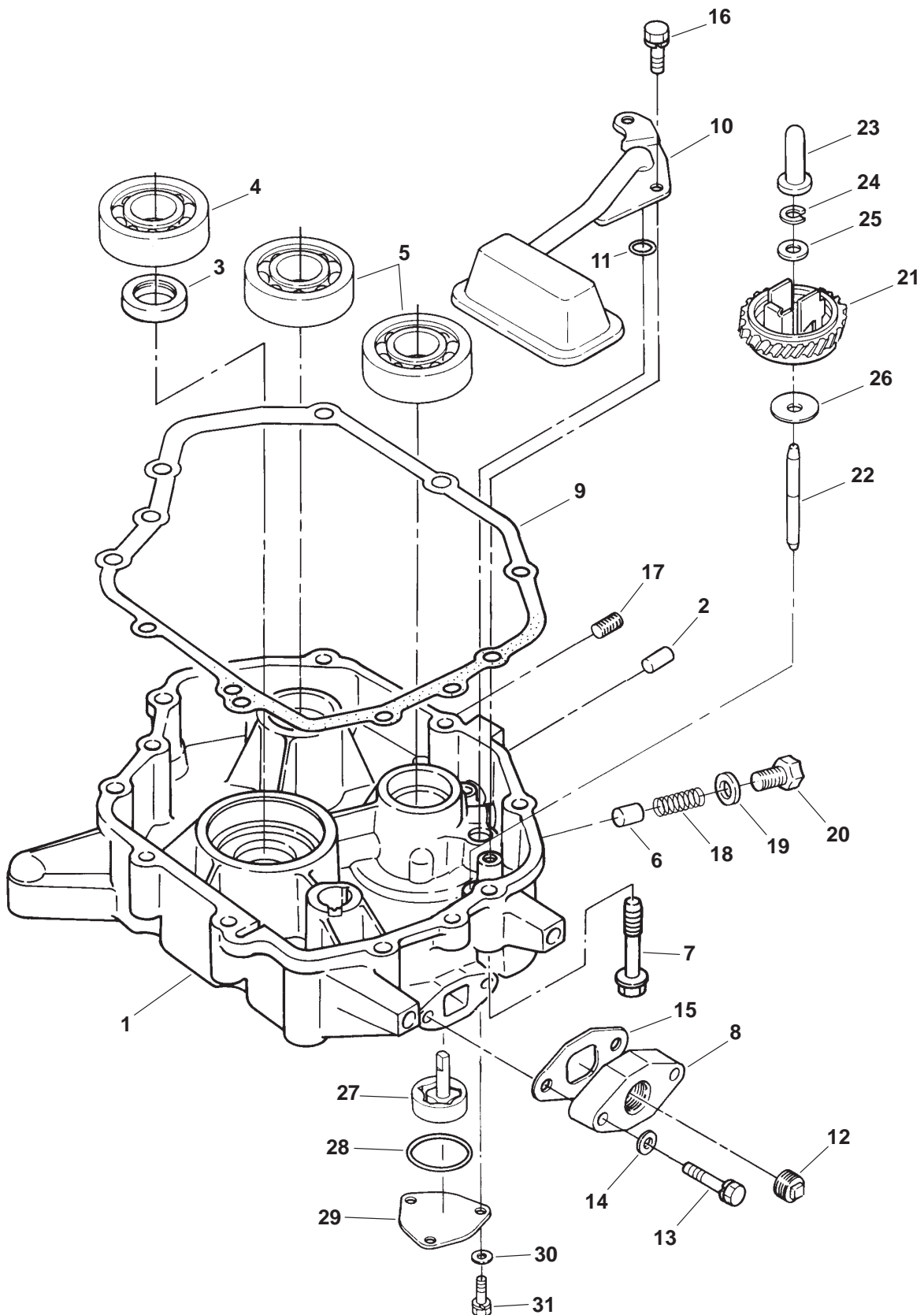
Cylinder Head

REF NO.	PART NO.	QTY USED	PART DESCRIPTION	REF NO.	PART NO.	QTY USED	PART DESCRIPTION
1			Head Assy, Cylinder	20	167-0263-02	1	Plug, Spark
	110-3912	1	With Valves (Includes Parts Marked #)	21	167-1621	1	Cap, Spark Plug
	110-3911	1	# Without Valves (Includes Parts Marked + and Seats)	22	110-3593	2	Bolt, Cylinder Head (M10 x 66mm)
2	110-3591	1	Gasket, Cylinder Head	23	123-1836	1	Breather
3	110-3579	1	#Valve, Exhaust	24	740-1008	1	Washer, Flat (M10)
4	110-3578	1	#Valve, Intake	25	110-3596	1	Bolt, Cylinder Head (M8 x 50mm)
5	110-3693	1	+Guide, Intake Valve	26	110-3594	2	Bolt, Cylinder Head (M10 x 86mm)
6	110-3694	1	+Guide, Exhaust Valve	27	518-0566	2	Clip, Retainer
7	110-3580	2	+Ring, Valve Guide	28	115-0473	2	Washer, Rocker Arm
8	110-3587	2	#Washer, Valve Spring	29	115-0426	2	Arm Assy, Rocker (Includes Nuts and Screws)
9	509-0289	1	#Seal, Intake Valve Stem	30	115-0427	2	Screw, Lash Adjusting (M7 x 0.75)
10	509-0330	1	#Seal, Exhaust Valve Stem (Begin Spec D)	31	115-0496	2	Nut, Lash Adjusting (M7 x 0.75)
11			#Spring, Valve	32	516-2004	1	Pin, Dowel
	110-3581	2	Spec A, B	33	110-3892	1	Pin, Hollow Dowel
	110-3822	2	Begin Spec C	34	115-0429	1	Shaft, Rocker Arm
12	110-3825	1	#Retainer, Intake Valve Spring	35	110-3595	1	Bolt, Cylinder Head (M10 x 125mm)
13	110-3826	1	#Retainer, Exhaust Valve Spring	36	115-0424	2	Rod, Push
14	110-3827	2	#Lock, Intake Valve	37	115-0423	2	Tappet
15	110-2752	2	#Lock, Exhaust Valve				
16			Cover, Valve				
	110-3860	1	Spec A (Kit Includes Breather Tube and Clamps)				
	110-3863-01	1	Begin Spec B				
17	740-1004	7	Washer, Flat (M6) (Use Only with Socket Head Cap Screw)				
18			Screw (M6 x 25mm)				
	725-1029	7	Socket Head Cap				
	800-3026	7	Flange Head Hex				
19			Gasket, Cover				
	102-1443	1	Spec A,B				
			Begin Spec C				
	110-3830	1	All Specs Except 11504				
	110-3598	1	Spec 11504				

– Parts Included in Cylinder Head Assy with Valves.

+ – Parts Included in Cylinder Head Assy without Valves.

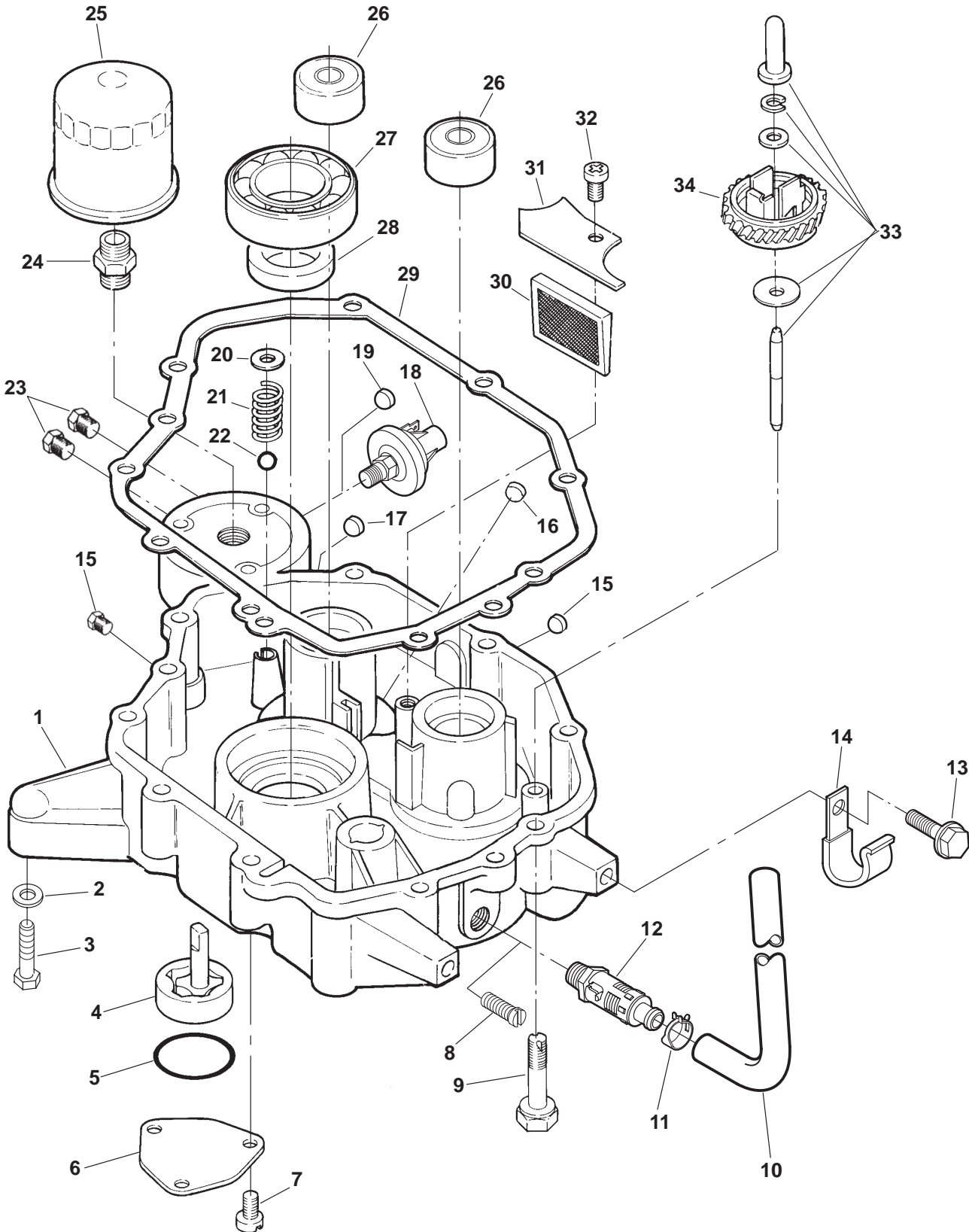
Oil Base (Spec A)



Oil Base (Spec A)

REF NO.	PART NO.	QTY USED	PART DESCRIPTION	REF NO.	PART NO.	QTY USED	PART DESCRIPTION
1	102-1372	1	Base, Oil	18	120-1220	1	Spring, Relief Valve
2	102-1375	1	Plug, Oil Drain	19	120-1221	1	Gasket, Copper
3	509-0258	1	Seal, Crankshaft Lower Oil	20	120-1225	1	Bolt, Retainer Spring
4	510-0182	1	Bearing, Crankshaft Lower	21	150-2272	1	Gear, Governor (Includes Shafts and Weights)
5	510-0163	2	Bearing, Balancer Shaft Lower	22	150-2273	1	Shaft, Governor
6	120-1219	1	Valve, Oil Relief	23	150-2530	1	Sleeve, Governor
7	815-0829-02	9	Bolt, Self Tapping (M8) (Special)	24	150-2275	1	Stop, Governor
8	102-1382	1	Flange, Oil Drain	25	526-2077	1	Washer, Flat (6.2mm ID x 9.7mm OD x 1.6mm Thk)
9	110-3588	1	Gasket, Oil Base	26	526-2078	1	Washer, Flat (6.2mm ID x 18mm OD x 1mm Thk)
10	120-1226	1	Pickup, Oil	27	120-1217	1	Pump, Oil
11	509-0252	1	O'Ring	28	509-0253	1	O'Ring
12	505-0110	1	Plug, Square Head (3/8")	29	120-1299-02	1	Cover, Oil Pump
13	718-1022	2	Screw, Hex Head Cap (M6 x 25mm)	30	740-1004	3	Washer, Flat (M6)
14	740-1004	2	Washer, Flat (M6)	31	718-1019	3	Screw, Hex Head Cap (M6 x 14mm)
15	102-1365	1	Gasket, Flange				
16	720-1019	2	Screw, Hex Head Cap (M6 x 14mm)				
17	505-1426	1	Plug, Countersunk Head (1/8")				

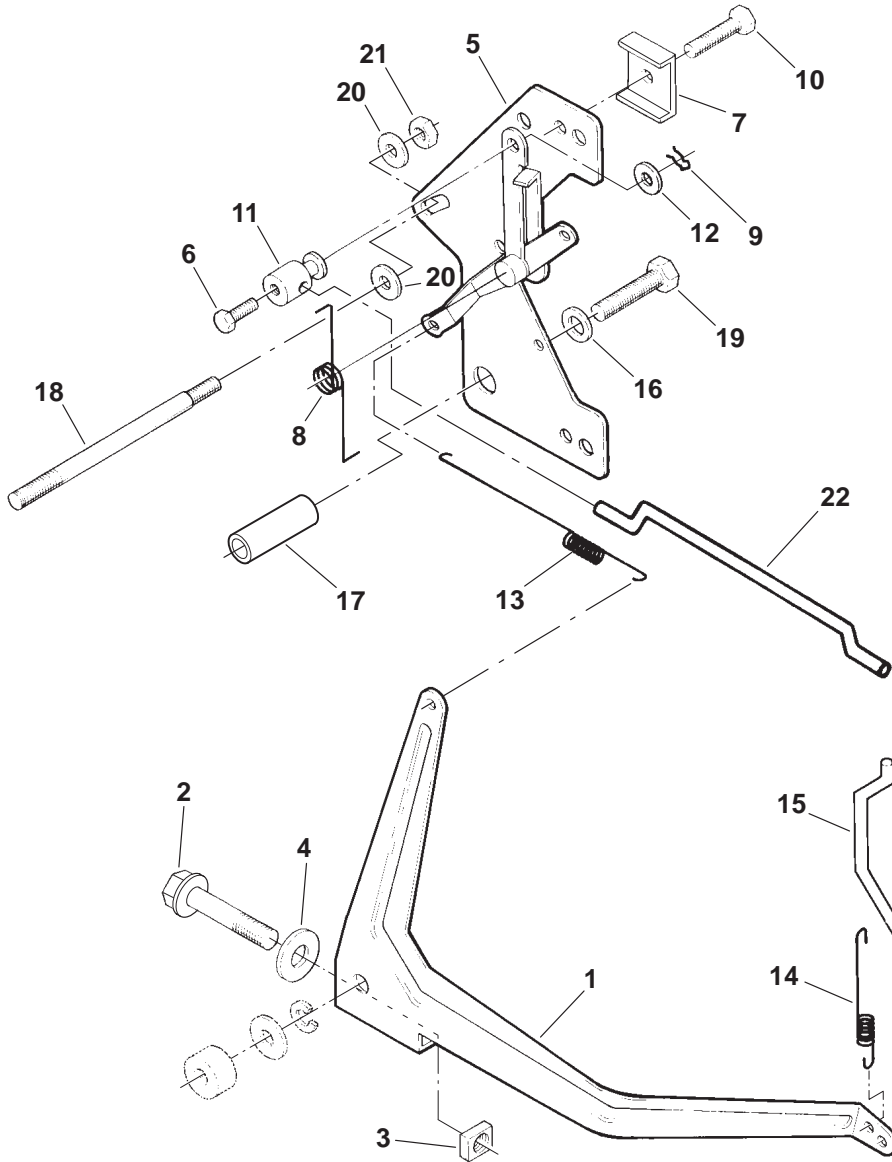
**Oil Base
(Begin Spec B)**



Oil Base (Begin Spec B)

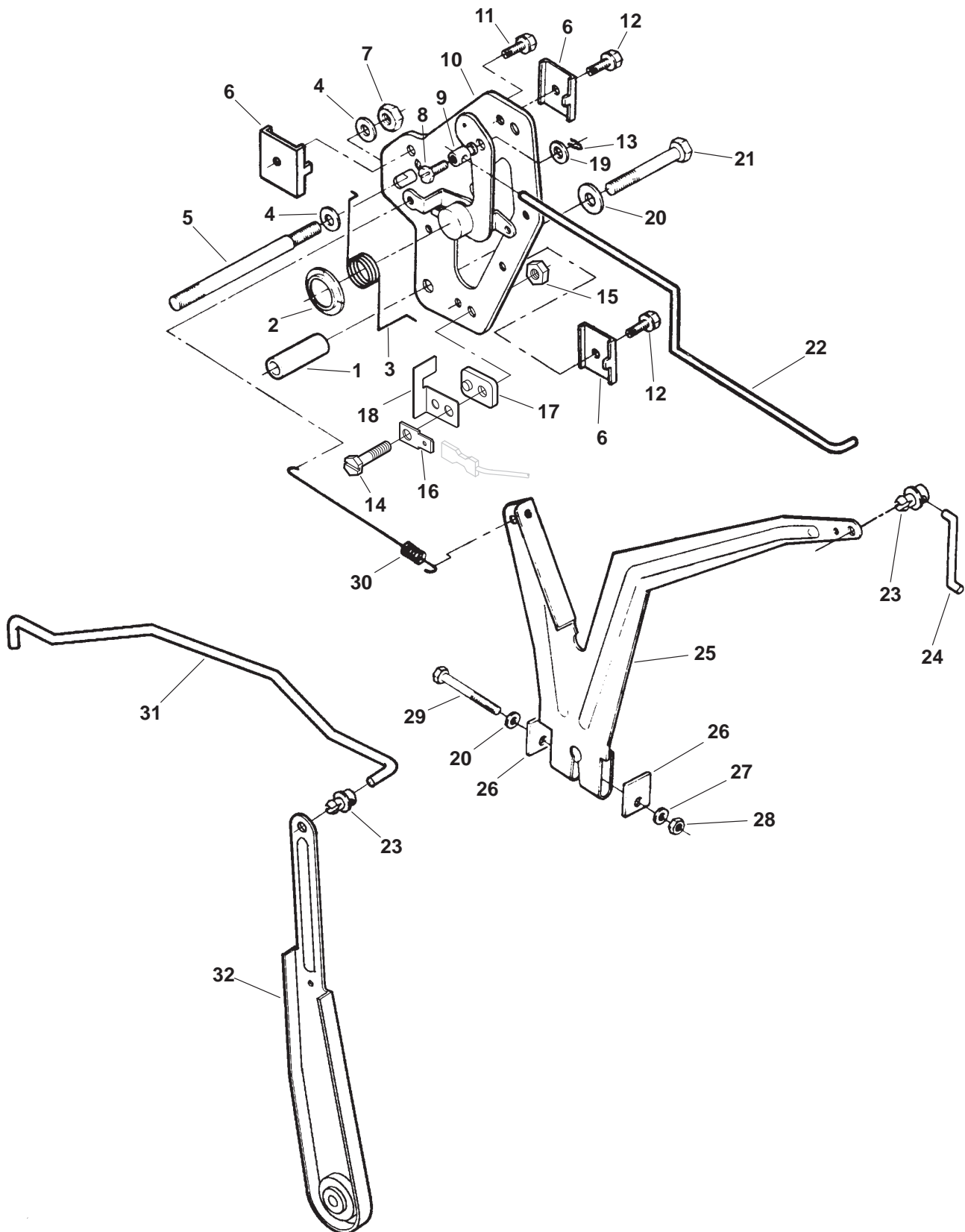
REF NO.	PART NO.	QTY USED	PART DESCRIPTION	REF NO.	PART NO.	QTY USED	PART DESCRIPTION
1			Base, Oil	18			Switch, Oil Pressure
	102-1372		Spec A & Spec 11068, 11139		309-0640	1	Code 35AU (Orders Listed as 35AH Should Be 35AU)
			Begin Spec B				
	102-1465-01	1	Code 17BW Except Spec 11068 & 11139		309-0646-06	1	Code 35AV
	102-1465-02	1	Code 17CG		309-0646-09	1	Code 35BW
	102-1465-03	1	Code 17DT	19	505-1515-02	1	Plug, Pipe (1/8")
2	526-0122	4	Washer, Mounting Flat (M8)	20	518-0560	1	Ring, Retaining
3	815-0759	4	Screw, Hex Head Cap (M8 x 1.25)	21	120-0140	1	Spring, Relief Valve
				22	510-0043	1	Ball, Steel (5/16" OD)
4	120-1217	1	Pump, Oil	23	502-1286-02	2	Plug, Hex Head Pipe(1/4")
5	509-0253	1	O'Ring	24	122-0770	1	Adapter, Oil Filter
6	120-1299-02	1	Cover, Oil Pump	25	122-0737	1	Filter, Oil
7	823-0003-05	3	Screw, Pan Head Torx	26	510-0163	2	Bearing, Balancer Shaft Lower
8	505-0266	1	Plug, Countersunk Square (3/8")	27	510-0182	1	Bearing, Crankshaft Lower
				28	509-0258	1	Seal, Crankshaft Lower Oil
9	815-0829-02	9	Bolt, Self-Tapping (M8)	29			Gasket, Oil Base
10	503-1274	1	Hose, Oil Drain (7/16 ID x 5/8 OD x 5-7/16" Lg)		110-3588	1	Spec A, B & Spec 11068E
					110-3829	1	Begin Spec C Except 11068E
11	503-0769	1	Clamp, Hose	30	120-1236	1	Screen, Oil Pickup Shaft
12	504-0186	1	Valve, Oil Drain	31	120-1237	1	Cover, Screen
13	815-0709-01	1	Screw, Hex Washer Head Thread Forming (M8 x 1.25 x 18mm)	32	823-0003-05	1	Screw, Pan Head Torx (M6 x 1 x 14mm)
				33	541-0508	1	Kit, Governor Sleeve (Includes Shaft, Sleeve, Washers and Retainer)
14	518-0515	1	Clip, Hose				
15	505-1516-02	2	Plug, Pipe (3/8")	34	150-2272	1	Gear, Governor (Includes Shafts and Weights)
16	517-0067	1	Plug, Core Hole				
17	502-1285-03	1	Plug, Hex Socket Pipe (1/16")				

**Governor
(Spec A)**



REF NO.	PART NO.	QTY USED	PART DESCRIPTION	REF NO.	PART NO.	QTY USED	PART DESCRIPTION
1	150-2279	1	Lever, Governor	11	152-0155	1	Swivel, Choke Lever
2	718-1039	1	Screw, Hex Head Cap (M8 x 35mm)	12	526-0140	1	Washer, Flat (#10)
3	870-0465	1	Nut, Square (M8)	13	150-2290	1	Spring, Governor
4	740-1006	1	Washer, Flat (M8)	14	150-2308	1	Spring, Throttle Link
5	152-0316	1	Plate, Throttle (Includes Control and Choke Levers, Pivot Pin and Flat Washers)	15	152-0317	1	Link, Throttle
6	815-0758	1	Screw, Hex Head Machine (#8-32 x 5/16")	16	740-1006	1	Washer, Flat (M8)
7	153-0514	1	Clamp, Cable	17	370-4057	1	Spacer
8	153-0621	1	Spring, Choke Linkage	18	520-2212	1	Stud
9	516-0059	1	Pin, Cotter	19	815-0776	1	Screw, Hex Washer Head Thread Forming (M8 x 40mm)
10	815-0602	1	Screw, Hex Washer Head Thread Forming (M5 x 12mm)	20	740-1004	2	Washer, Flat (M6)
				21	750-1004	1	Nut, Hex (M6)
				22	153-0623	1	Link, Choke

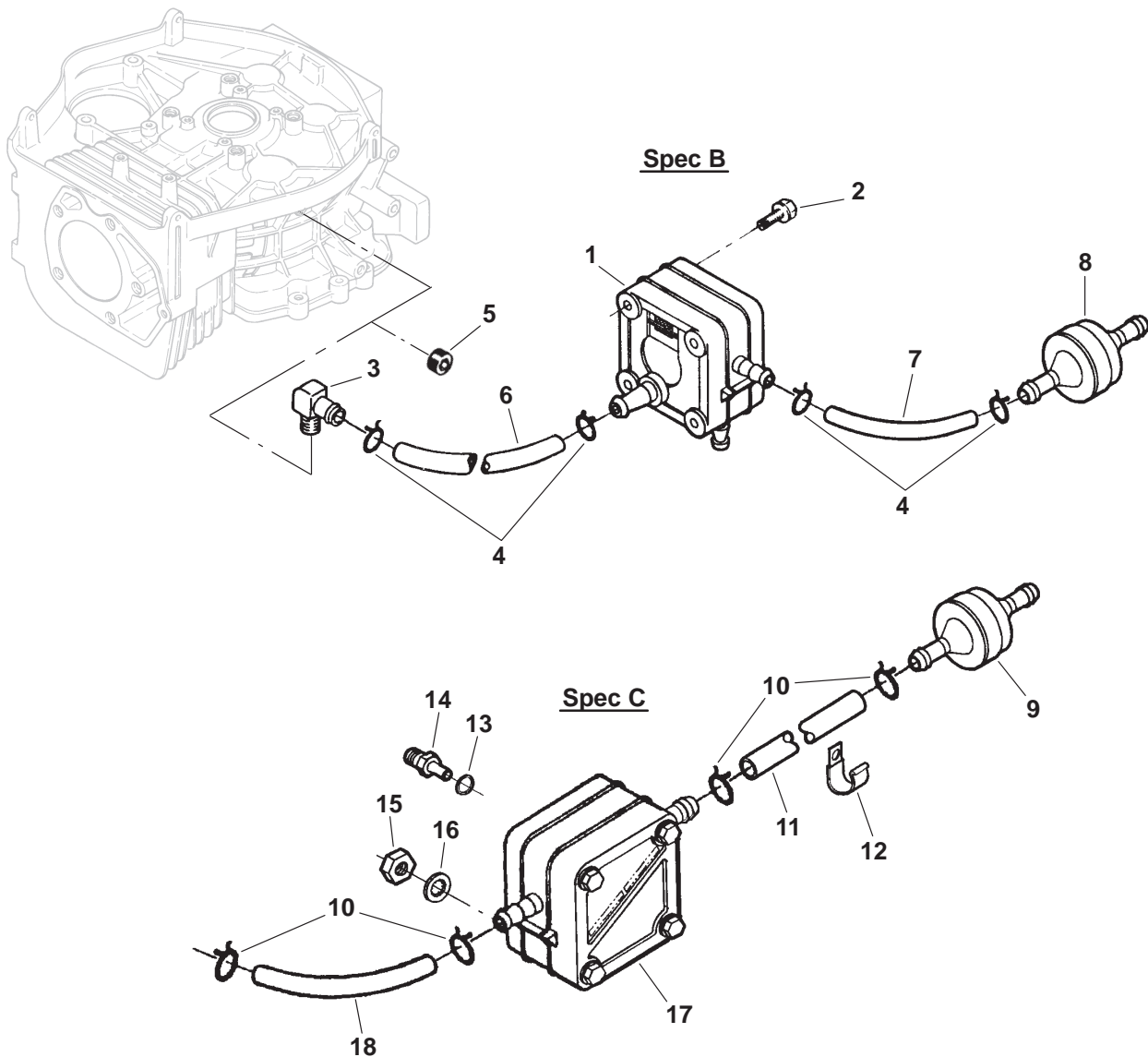
Governor (Begin Spec B)



**Governor
(Begin Spec B)**

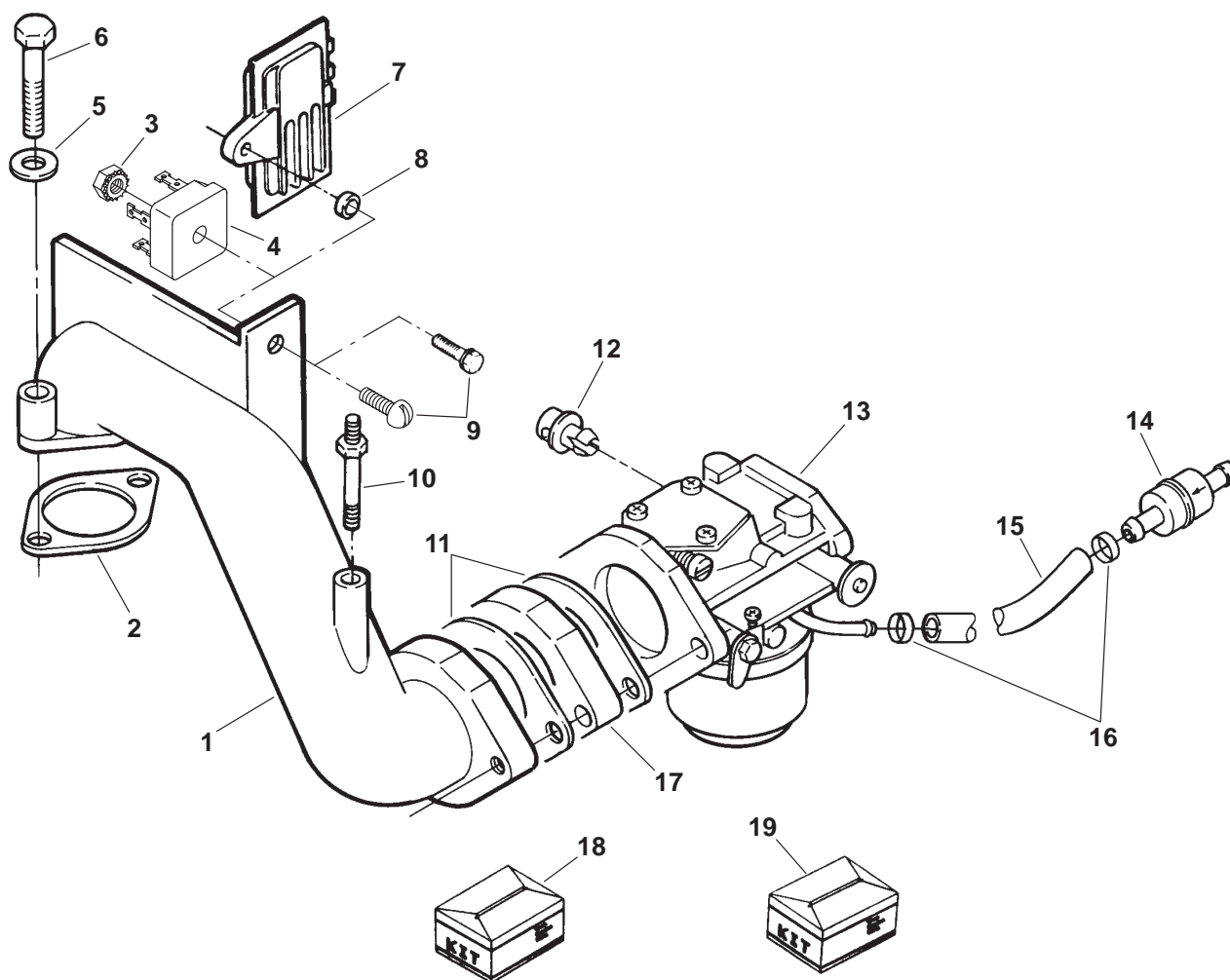
REF NO.	PART NO.	QTY USED	PART DESCRIPTION	REF NO.	PART NO.	QTY USED	PART DESCRIPTION
1	370-4057	1	Spacer	16	332-0527	1	Terminal (Code 13DC, 13DH)
2	518-0594	1	Ring, Retaining	17	313-0039	1	Insulator, Switch (Code 13DC, 13DH)
3	153-0621	1	Spring, Choke Linkage				
4	740-1004	2	Washer, Flat (M6)	18	313-0038	1	Contact, Switch (Code 13DC, 13DH)
5	520-2212	1	Stud				
6			Clamp, Cable	19	526-0140	1	Washer, Flat (#10)
	153-0633-01	1	Single Control	20	740-1006	2	Washer, Flat (M8)
	153-0633-01	2	Dual Control	21	815-0776	1	Screw, Hex Washer Head Thread Forming (M8 x 40mm)
7	750-1004	1	Nut, Hex (M6 x 1)				Link, Choke
8	800-4072	1	Screw, Hex Slotted Recessed Machine (M4 x .7 x 8mm)	22			Spec B
9	153-0632	1	Swivel, Choke Lever		153-0630	1	Begin Spec C
10	152-0326	1	Plate, Throttle (Includes Control and Choke Levers, Pivot Pin and Flat Washers)	23	152-0343	1	Clip, Link
				24	152-0319	1	Link, Throttle (Spec B)
11	815-0779	1	Screw, Hex Washer Head Thread Forming (#12-24 x 1") (Used on Dual Control)	25	150-2338	1	Lever, Governor (Spec B)
12	815-0359	1	Screw, Hex Washer Head Thread Forming (#10-32 x 7/8")	26	150-2351	2	Washer, Governor Lever
				27	853-0016	1	Washer, ET Lock (5/16")
13	516-0059	1	Pin, Cotter	28	750-1006	1	Nut, Hex (M8)
14	815-0833	1	Screw, Nylon Hex Slotted (#10-32) (Code 13DC, 13DH)	29	800-2062	1	Screw, Hex Head Cap (M8 x 1.25 x 45mm)
15	870-0528	1	Nut, Nylon Hex (#10-32) (Code 13DC, 13DH)	30			Spring, Governor
					150-2290	1	Spec B
					150-2548	1	Begin Spec C
				31	152-0330	1	Link, Throttle (Begin Spec C)
				32	150-2515	1	Lever, Governor (Begin Spec C)

Fuel Pump (Begin Spec B)



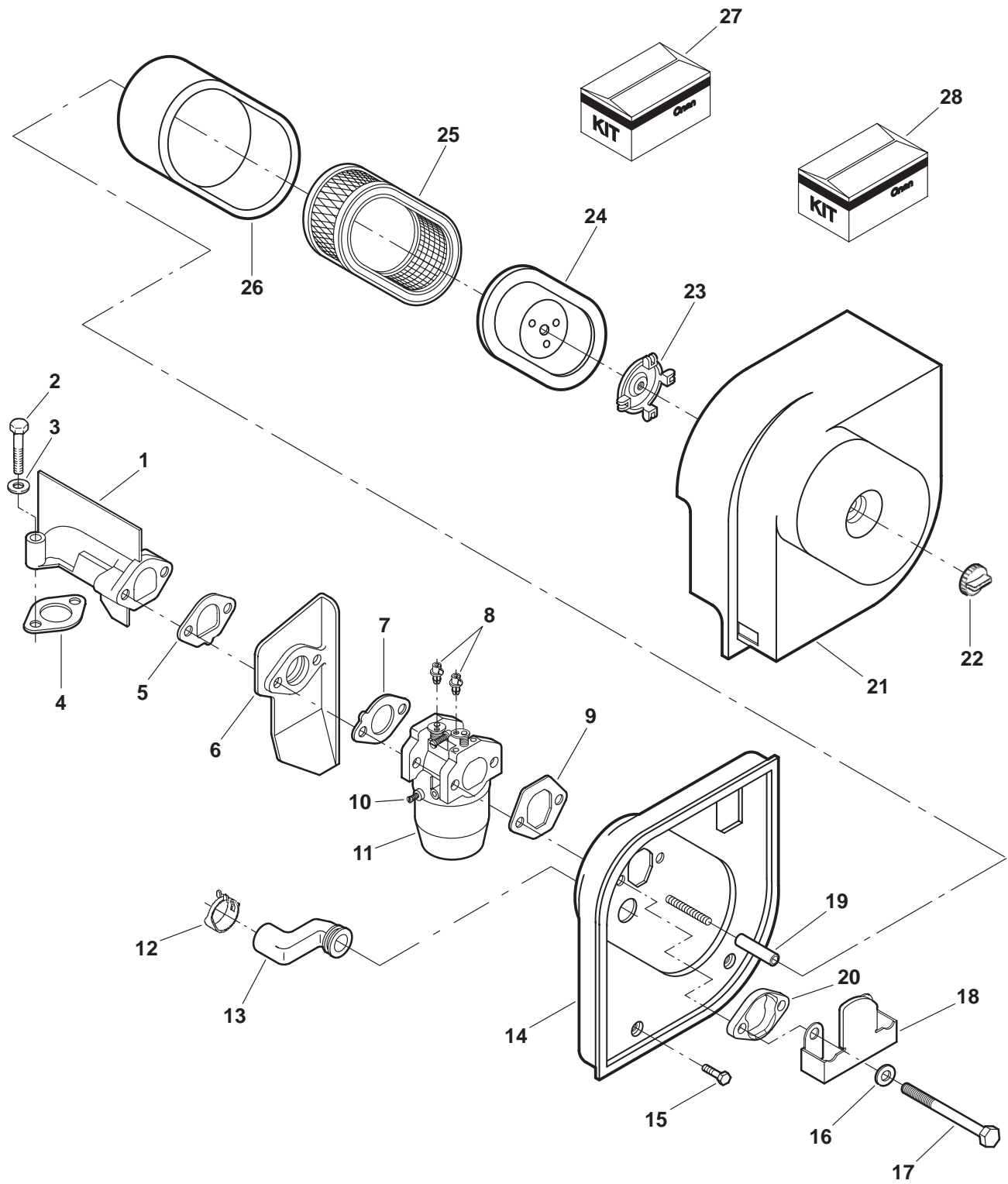
REF NO.	PART NO.	QTY USED	PART DESCRIPTION	REF NO.	PART NO.	QTY USED	PART DESCRIPTION
<u>Spec B</u>				<u>Spec C</u>			
1	149-2299	1	Pump, Fuel	9	149-2356	1	Filter, Fuel
2	815-0775	2	Screw, Hex Washer Head Thread Forming (M4 x 40mm)	10	503-0731	4	Clamp, Hose (Pulse and Fuel Line)
3	502-0313	1	Fuel Pump Mounting Elbow, 90° Hose (1/8") Fuel Pump Pulse Line (Cylinder Block Mounted)	11	503-0707	1	Hose
4	503-0731	4	Clamp, Hose (Pulse and Fuel Line)	12	518-0515	1	Clip, Wire
5	505-1426	1	Plug, Fuel Pump Hole Pipe	13	508-1076	1	Grommet
6	503-1016	1	Hose, Fuel Pump Pulse (5-1/8" x 1/4" ID)	14	149-2422	1	Spud, Fuel Pump
7	503-1232	1	Hose, Fuel Pump to Carburetor (5-1/2" x 1/4" ID)	15	860-0011	2	Nut
8	149-2356	1	Filter, Fuel	16	854-0010	2	Washer, Lock
				17	149-2371	1	Pump, Fuel (Includes Grommet)
				18	503-1422	1	Hose, Fuel (5-1/8" x 1/4" ID)

Carburetor (Spec A, B)



REF NO.	PART NO.	QTY USED	PART DESCRIPTION	REF NO.	PART NO.	QTY USED	PART DESCRIPTION
1	140-2333	1	Elbow, Intake Spec A	10	520-2033	1	Stud
	154-2792	1	Spec B	11	146-0486	2	Gasket
2	146-0484	1	Gasket	12	152-0343	1	Clip, Link (Spec B)
3	870-0131	1	Nut, ET Hex (#10-32) (Spec B) (Code 31DP, 31BS)	13	146-0518	1	Carburetor Spec A
4	305-0718	1	Rectifier, Bridge (Spec B) (Code 31DP, 31BS)		146-0526	1	Spec B
5	526-0115	2	Washer, Flat (M8)	14	149-2206-01	1	Filter, Fuel (Spec A)
6	800-2063	2	Screw, Hex Head Cap (M8 x 1.25 x 50mm)	15	503-1016	1	Hose, Fuel (1/4"ID x 9") (Spec A)
7	191-2208	1	Regulator, Voltage (Spec B) (Code 31AZ, 31BN)	16	503-0731	2	Clamp, Hose (Spec A)
8	150-1269	1	Bushing (Spec B) (Code 31AZ, 31BN)	17	146-0485	1	Insulator
9			Screw (Spec B)	18	146-0559	1	Kit, Float
	821-0011	1	Hex Washer Head Cap (1/4-20 x 7/8") (Code 31AZ, 31BN)	19			Kit, Repair (Includes Slow Jet, Main Nozzle, Main Jet, Float, Float Valve, Float Pin, Bowl Gasket, Bowl Gasket Bolt, Cover Gasket, Idle Adjust Screw, Idle Adjust Screw Spring)
	813-0103	1	Round Head Machine (#10-32 x 3/4") (Code 31BS, 31DP)		146-0560	1	Spec A
					146-0561	1	Spec B

Carburetor (Begin Spec C)

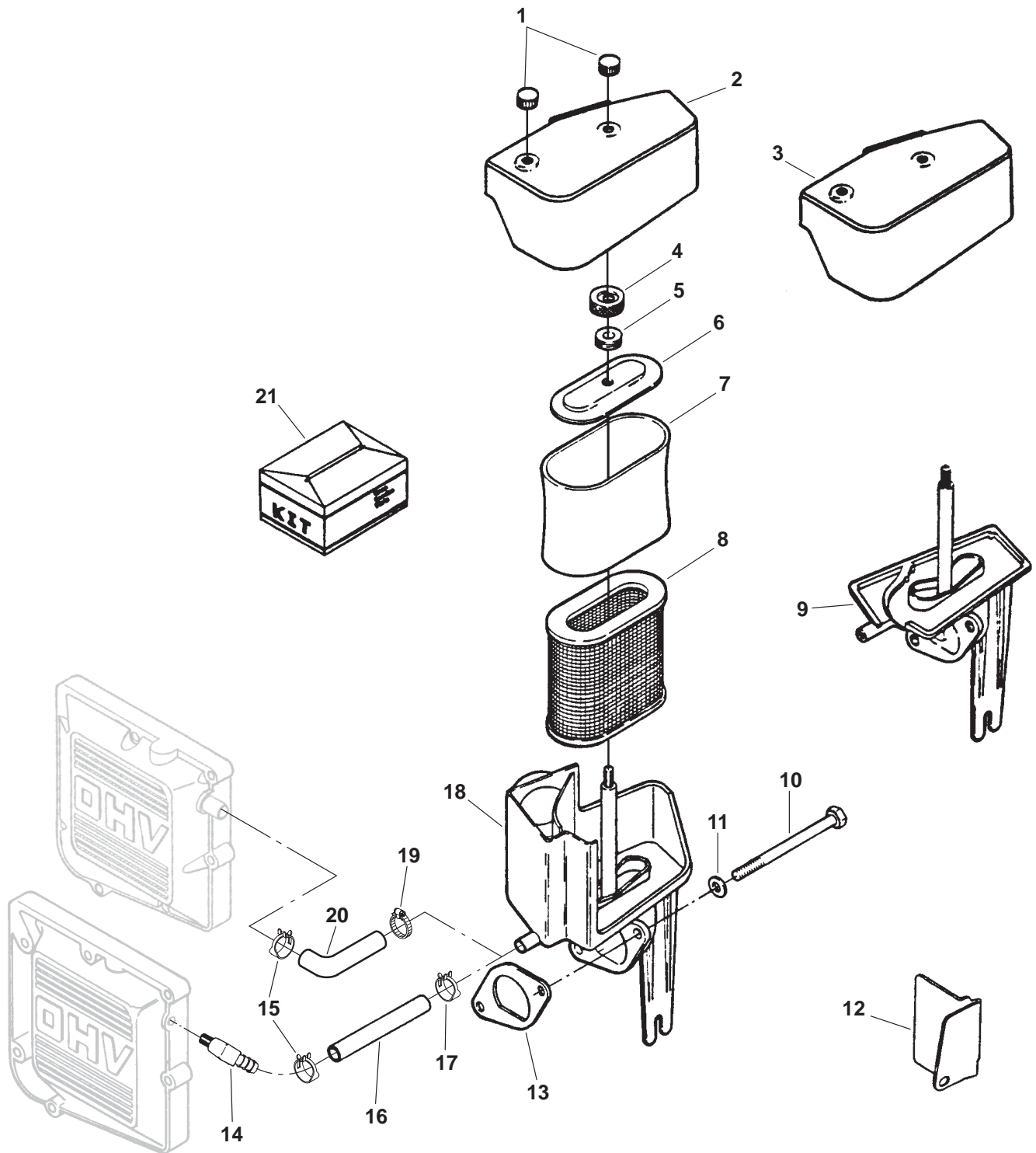


Carburetor (Begin Spec C)

REF NO.	PART NO.	QTY USED	PART DESCRIPTION	REF NO.	PART NO.	QTY USED	PART DESCRIPTION
1	154-2908	1	Elbow, Intake	16	740-1004	2	Washer, Flat (M6)
2	800-2063	2	Screw, Hex Head Cap (M8 x 1.25 x 50mm)	17			Screw, Hex Head Thread Forming
3	526-0115	2	Washer, Flat (M8)		815-0816	2	Spec C, D
4			Gasket, Intake		815-0816-01	2	Begin Spec E
	146-0484	1	Spec C, D	18	145-0678-02	1	Plate, Air Deflector
	146-0584	1	Begin Spec E	19	140-2536-04	1	Seal, Air Cleaner Spacer
5	146-0571-02	1	Gasket, Insulator	20	145-0694	1	Support, Carburetor (Begin Spec E)
6	146-0567	1	Insulator, Carburetor	21	140-2676	1	Cover, Air Cleaner
7	146-0571-01	1	Gasket, Carburetor	22	140-2761	1	Knob, Air Cleaner Cover
8	152-0343	2	Clip, Link	23	140-2675	1	Knob, Inner Cover
9			Gasket, Carburetor	24	140-2674-01	1	Cover, Element
	140-2772	1	Spec C, D	25	140-3010	1	Element, Air Cleaner
	102-1462	1	Begin Spec E	26	140-2748	1	Wrapper, Element
10	146-0704	1	*Jet, Altitude	27	146-0604	1	Kit, Carburetor Rebuild (Spec C, D)
11			Carburetor	28	146-0605	1	Kit, Carburetor Float (Spec C, D)
	146-0568	1	Spec C,D				
	146-0702	1	Begin Spec E (Includes Gaskets)				
12	503-1445-04	1	Clamp, Hose				
13			Tube, Breather				
	123-1940	1	Spec C, D				
	123-2043	1	Begin Spec E				
14			Pan, Air Cleaner				
	140-2716-02	1	Spec C, D				
	140-2941-02	1	Begin Spec E				
15	815-0474	2	Screw (1/4-14 x 1/2")				

* – To Be Used ONLY Outside the State of California,
Altitudes Above 5000 Feet.

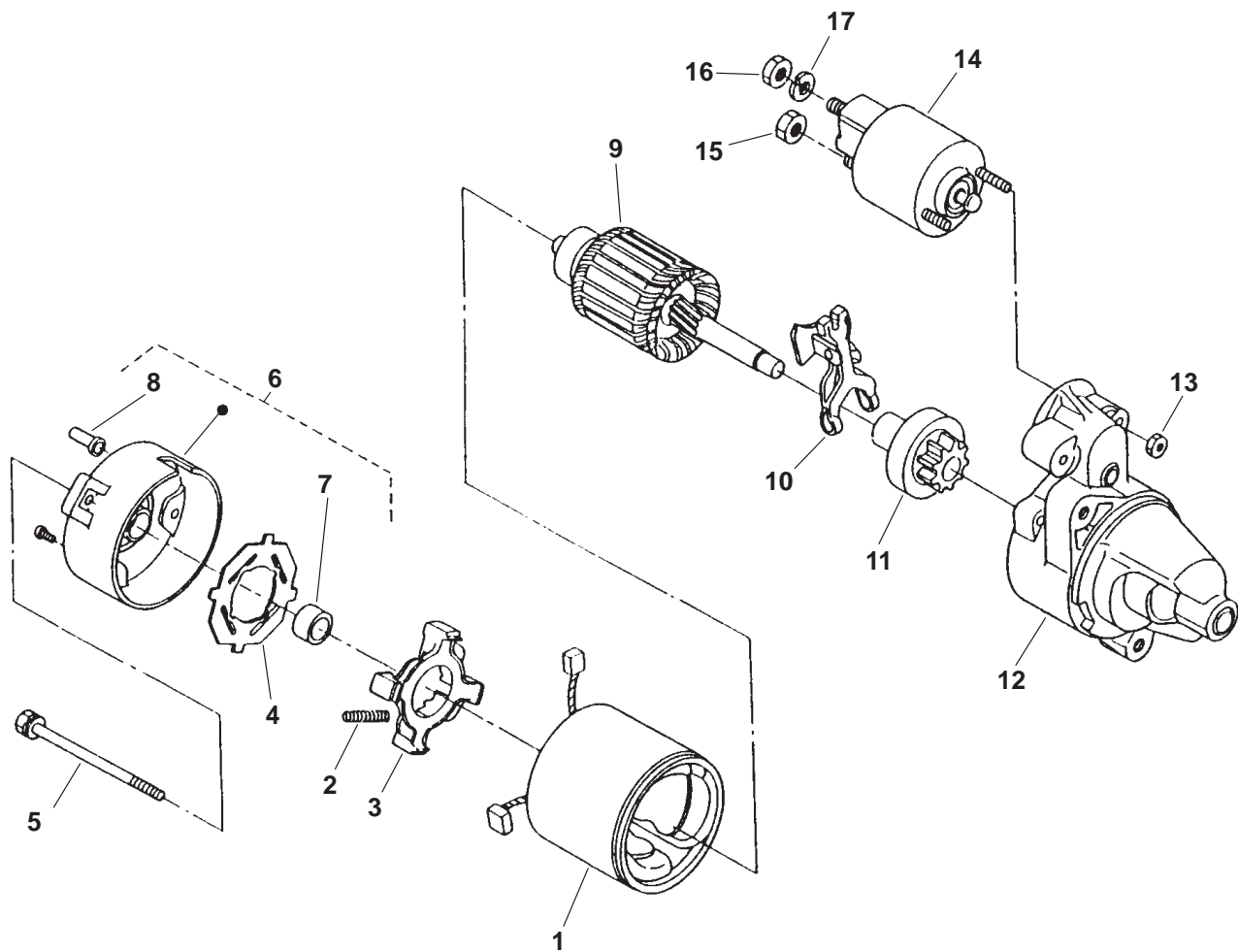
Air Cleaner (Spec A, B)



Air Cleaner (Spec A, B)

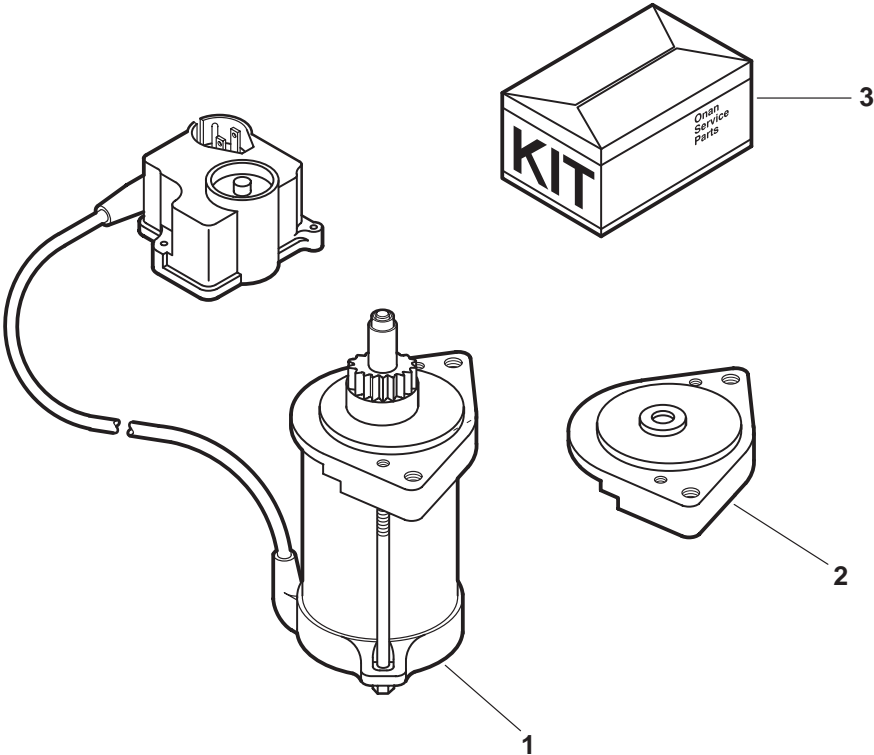
REF NO.	PART NO.	QTY USED	PART DESCRIPTION	REF NO.	PART NO.	QTY USED	PART DESCRIPTION
1	140-2383	2	Knob, Air Cleaner Cover	14	502-1111	1	Elbow, 45° Breather (Spec A)
2	140-2584-50	1	Cover, Air Cleaner	15	503-0769	1	Clamp, Hose
3	140-2657	1	Cover, Air Cleaner (With Seal) (Sales Code 19CH)	16	123-1913	1	Hose, Breather (5/16"ID x 100mm) (Code 15BB, 15BC, 15CH)
4	140-2533	1	Knob, Inner Cover	17	503-1133	1	Clamp, Hose (Black) (Code 15BB, 15BC, 15CH)
5	508-0012	1	Grommet (3/8" Hole)	18	140-2527	1	Adapter
6	140-2534	1	Cover, Element	19	503-0170	1	Clamp, Hose (Code 15BA, 15BM, 15CS, 15CP)
7	140-2335-01	1	Wrapper, Element	20	503-1396	1	Hose, Breather (Code 15BA, 15BM, 15CS, 15CP)
8	140-3111	1	Element	21	140-2659	1	Kit, Air Cleaner (Cover Knobs, Air Cleaner Cover, Grommet, Element Cover, Wrapper, Element, Adapter, Gasket, Air Deflector)
9	140-2595	1	Adapter (Sales Code 19CH)				
10	718-1808	2	Screw, Hex Head Cap (M8 x 100mm)				
11	740-1006	2	Washer, Flat (M8)				
12	140-2650	1	Deflector, Air (Sales Code 19CH)				
13	140-2329	1	Gasket				

Starter Components (Code 33AT)



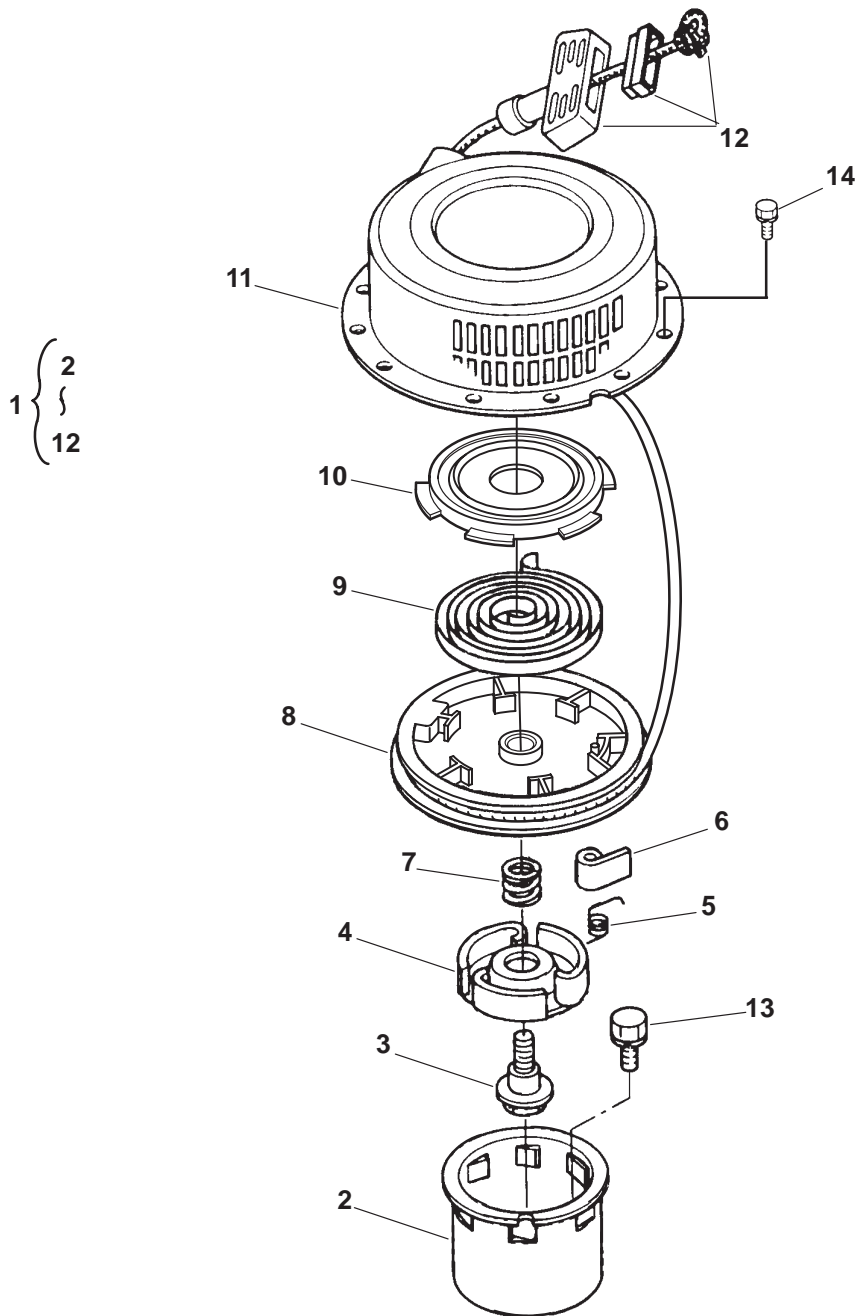
REF NO.	PART NO.	QTY USED	PART DESCRIPTION	REF NO.	PART NO.	QTY USED	PART DESCRIPTION
	191-1906	1	Starter (12V)	9	185-2657	1	Armature, Starter
1	185-2659	1	Frame, Starter	10	185-2656	1	Lever, Drive – Starter
2	185-2662	4	Spring, Brush	11	185-2713	1	Clutch, Sub
3	185-2661	1	Holder, Brush	12	—	1	Housing, Starter
4	185-2664	1	Insulator	13	185-2334	2	Nut
5	185-2660	2	Bolt, Through	14	185-2658	1	Switch, Magnetic
6	185-2707	1	Frame, Commutator (Includes Bearing and Cover)	15	870-0465	1	Nut
7	185-2663	1	Bearing, Oilless	16	185-2367	1	Nut
8	185-2965	1	Cover	17	185-6957	1	Washer, Spring
				18	185-6386	1	Ring, Snap

**Starter Components
(Code 33BC)**



REF NO.	PART NO.	QTY USED	PART DESCRIPTION
1	191-2127	1	Starter (110V)
2	191-2153	1	Cap, Drive
3	191-2152	1	Kit, Drive (Includes Spacer, Spring, Pinion Stop, Lock Ring, Dust Cover, Molded Pinion, Plate, Washer)

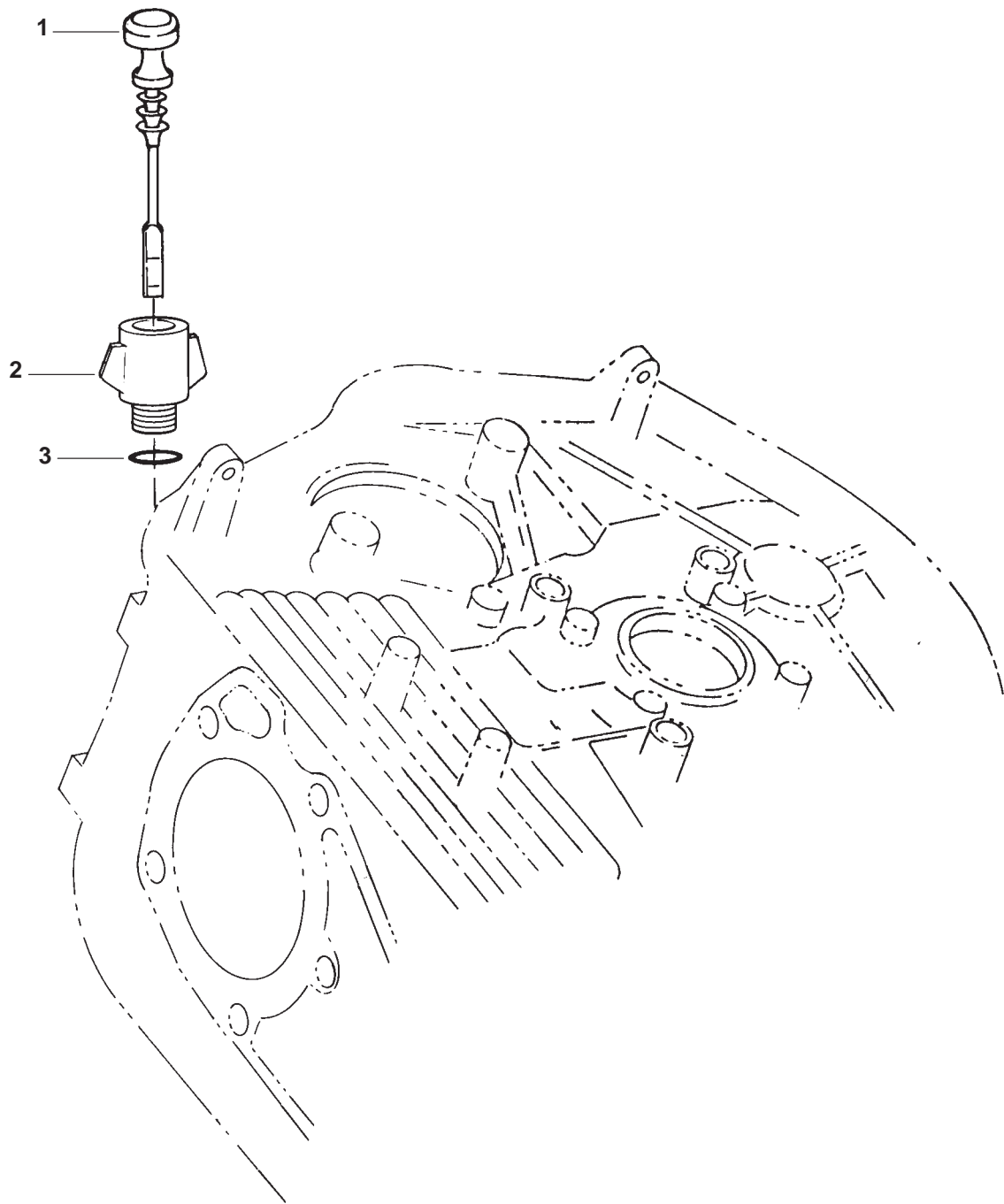
Recoil Starter (Code 33AY)



REF NO.	PART NO.	QTY USED	PART DESCRIPTION	REF NO.	PART NO.	QTY USED	PART DESCRIPTION
	541-0488	1	Kit, Recoil Starter	10	192-0442	1	*Case, Spring
1	192-0433	1	Starter Assy, Recoil (Includes Parts Marked *)	11	185-2717	1	*Case, Recoil
2	185-2722	1	*Pulley, Crank	12	185-3681	1	*Handle Assy (Includes Handle, Rope and Reinforcement
3	185-5289	1	*Screw, Center				
4	185-2767	1	*Retainer	13	821-2045	3	Screw, Hex Head Self-Locking Flange (M8 x 16mm)
5	185-2942	3	*Spring, Dog	14	815-0773	4	Bolt, Flanged (M6 x 1 x 8mm)
6	185-2889	3	*Dog				
7	185-2768	1	*Spring, Brake				
8	185-2718	1	*Reel				
9	185-2719	1	*Spring, Spiral				

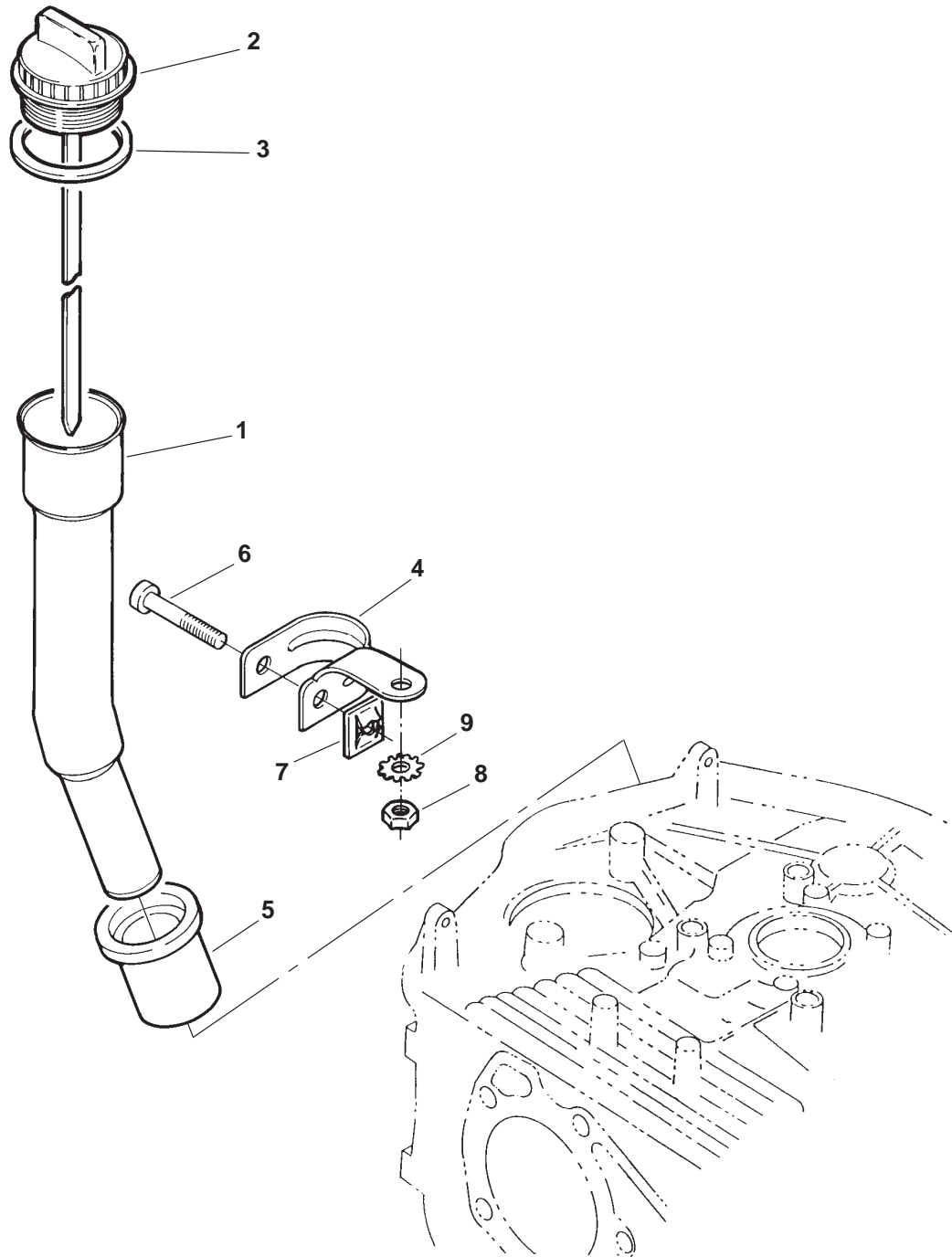
* – Parts Included in Starter Assy.

Oil Fill (Spec A)



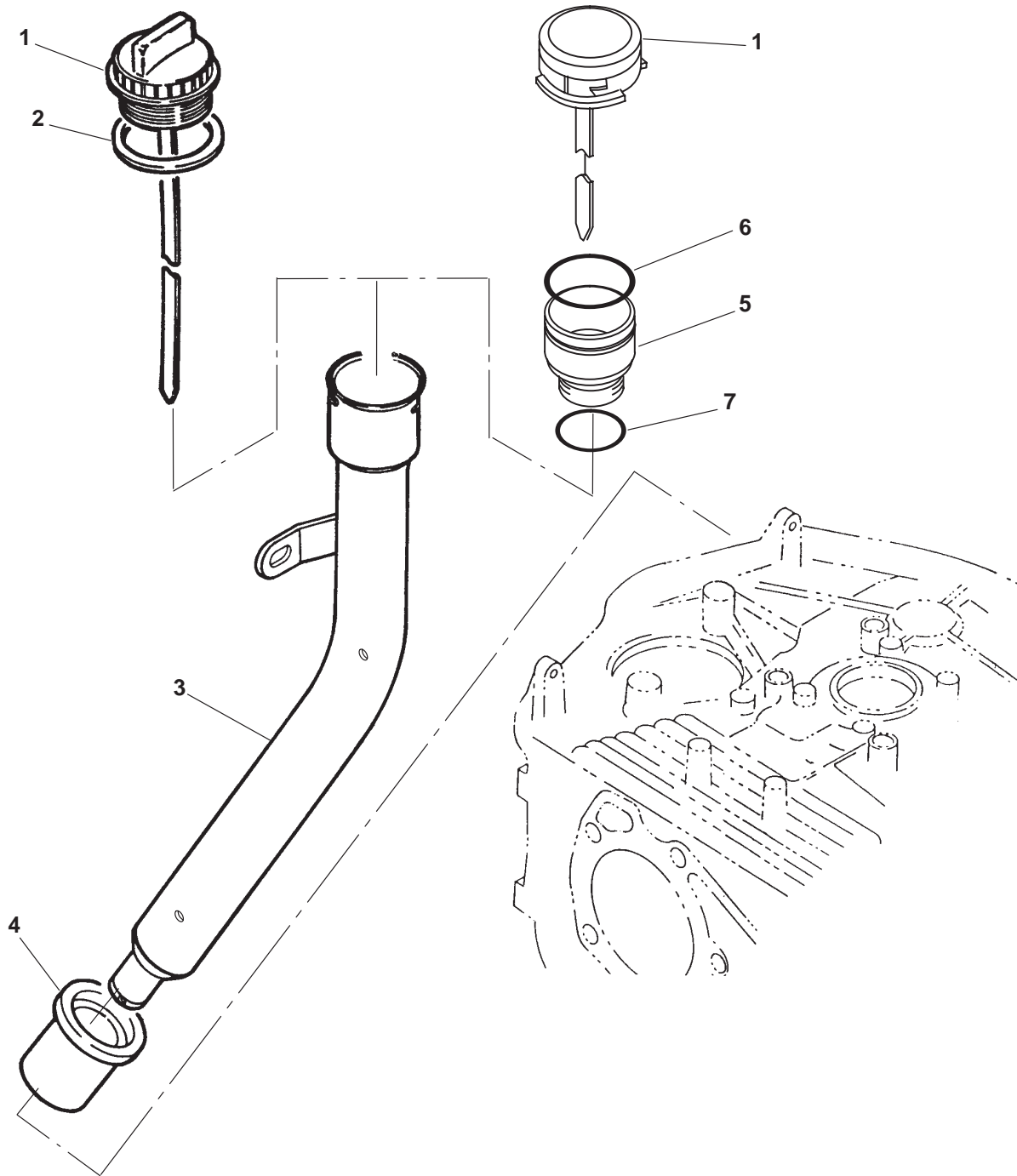
REF NO.	PART NO.	QTY USED	PART DESCRIPTION
1	123-1840	1	Indicator, Oil Level
2	123-1841	1	Support, Indicator
3	509-0254	1	O'Ring

**Short Oil Fill Tube
(Begin Spec B)
(Code 17DD)**



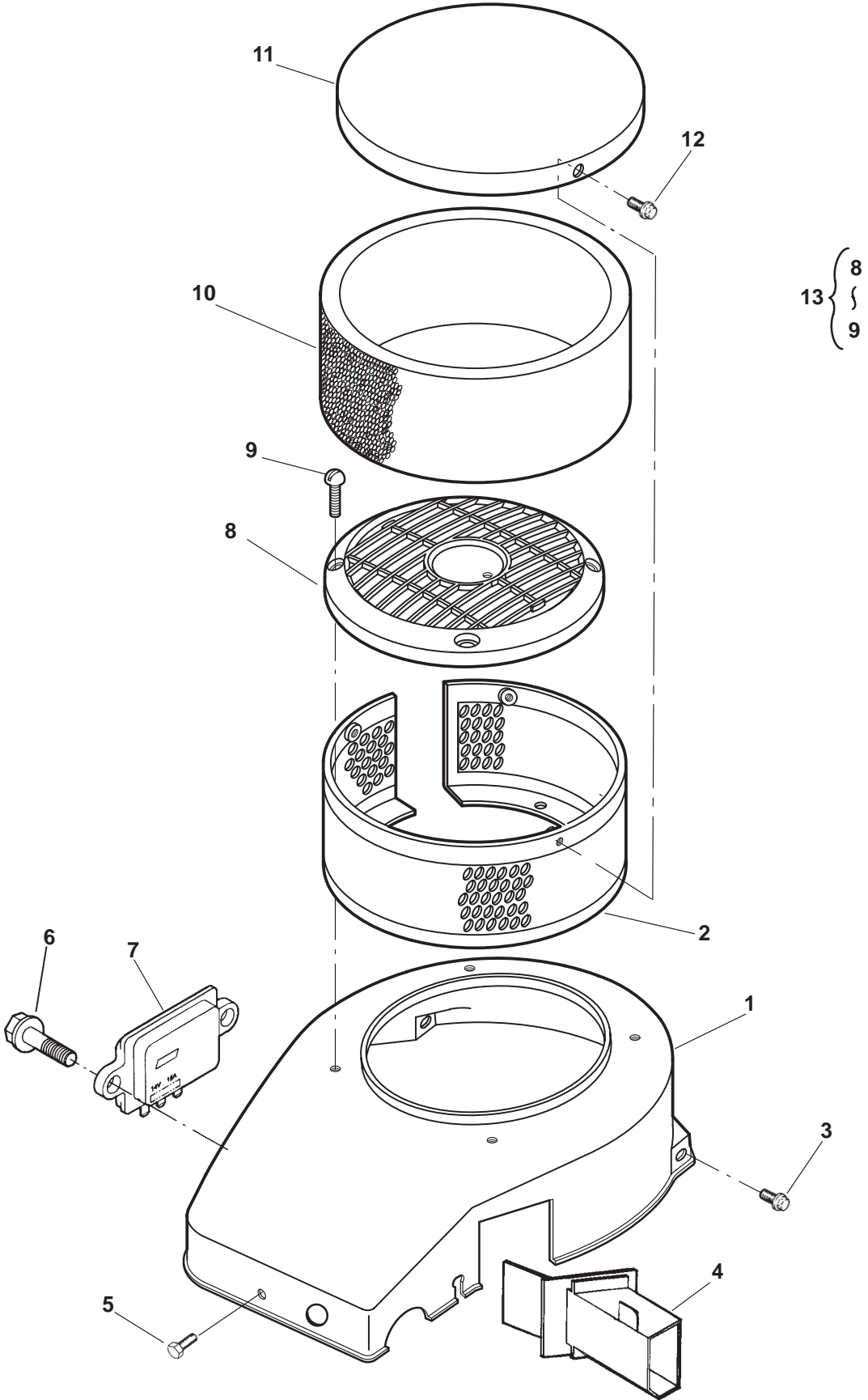
REF NO.	PART NO.	QTY USED	PART DESCRIPTION	REF NO.	PART NO.	QTY USED	PART DESCRIPTION
1	123-1873-02	1	Tube, Oil Fill (133mm)	6	815-0576	1	Screw, Self Tapping Cross Recessed Pan Head (#10 x 1-1/4")
2	123-1875	1	Indicator, Oil Level (Includes O'Ring)	7	870-0410	1	Nut, U Type Speed
3	509-0142	1	O'Ring	8	750-1006	1	Nut, Hex (M8)
4	123-1876	1	Bracket, Support	9	853-0016	1	Washer, Lock ET (5/16")
5	509-0269	1	Seal, Oil Fill Tube				

**Long Oil Fill Tube
(Begin Spec B)
(Code 17CF, 17DP)**



REF NO.	PART NO.	QTY USED	PART DESCRIPTION	REF NO.	PART NO.	QTY USED	PART DESCRIPTION
1	123-1874	1	Indicator, Oil Level Code 17CF (Threaded Cap) (Includes O'Ring)	4	509-0269	1	Seal, Tube
	123-1874-01	1	Code 17DP (Notched Cap)	5	123-2105	1	Adapter Assy (Includes O'Rings (Code 17DP)
2	509-0142	1	O'Ring	6	509-0304	1	O'Ring (Code 17DP)
3	123-1915-50	1	Tube, Oil Fill	7	509-0142	1	O'Ring (Code 17DP)

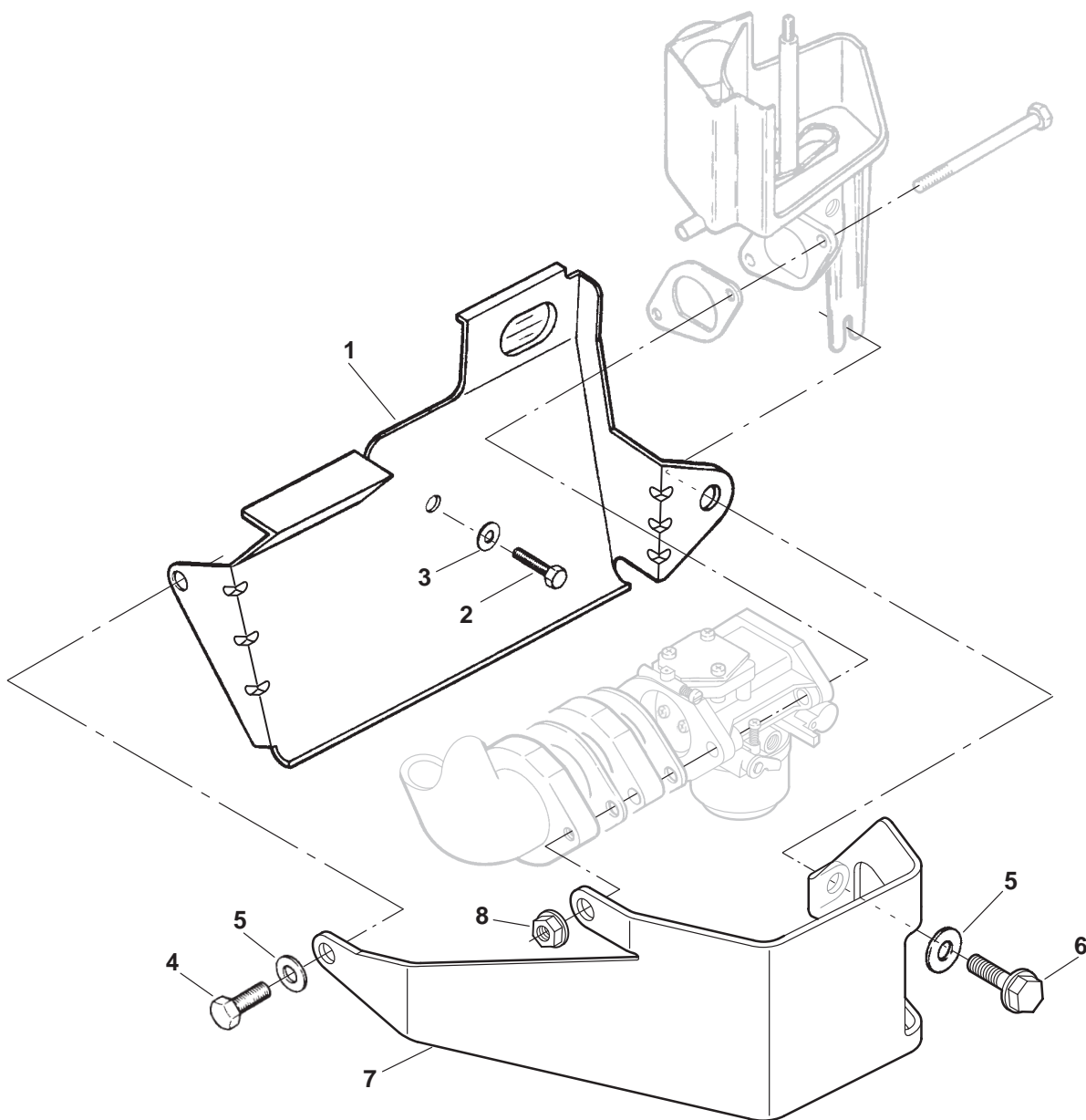
Blower Housing



Blower Housing

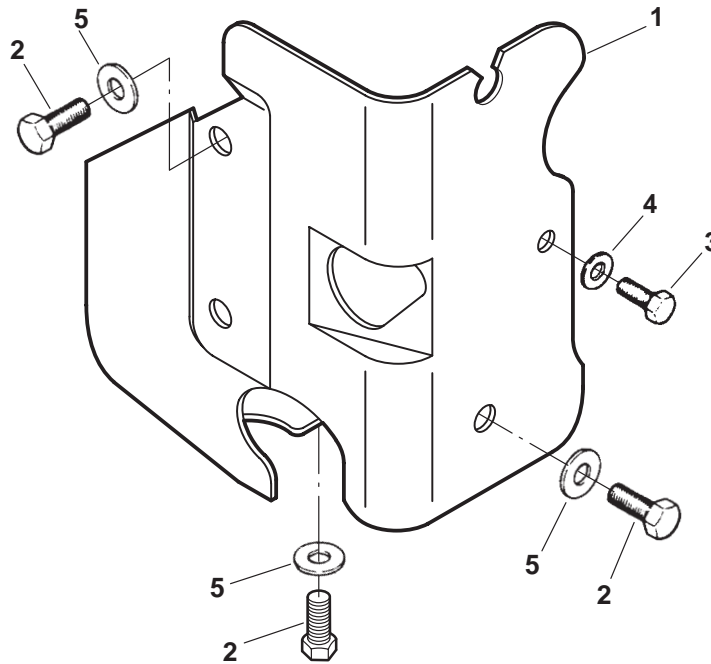
REF NO.	PART NO.	QTY USED	PART DESCRIPTION	REF NO.	PART NO.	QTY USED	PART DESCRIPTION
1			Housing, Blower Spec A,B	5	815-0753	1	Screw, Self Tapping (M6 x 14mm) (Begin Spec C)
	134-4739-50	1	With Cutout for Air Cleaner Tube	6	815-0474	2	Screw, Hex Washer Head Sheet Metal (1/4-14 x 1/2")
	134-4739-51	1	Without Cutout for Air Cleaner Tube	7	191-2207	1	Regulator, Voltage
			Begin Spec C	8	134-4738	1	*Guard, Stationary
	134-4739-54	1	With Voltage Regulator Cutout	9			Screw
					823-1003	4	* Button (M6 x 1 x 20mm) (With Guard)
	134-4739-55	1	W/O Voltage Regulator Cutout		815-0773	4	Flanged (Without Guard)
2	140-2824-02	1	Support, Precleaner	10	140-2825-01	1	Filter, Precleaner
3			Fastener	11	140-2853-02	1	Cover, Precleaner
	815-0756	4	Spec A,B – Bolt, Flange Hex Head (M6 x 14mm)	12	815-0340	3	Screw, Hex Washer Head (10-32 x 3/8")
	821-2033	4	Begin Spec C – Screw, Locking Hex Washer Head (M6 x 16mm)	13	541-0439	1	Kit, Stationary Guard (Includes Parts Marked *)
4	140-2810	1	Tube, Air Inlet (Begin Spec C)	* – Parts Included in Stationary Guard Kit.			

Carburetor Guard Bracket



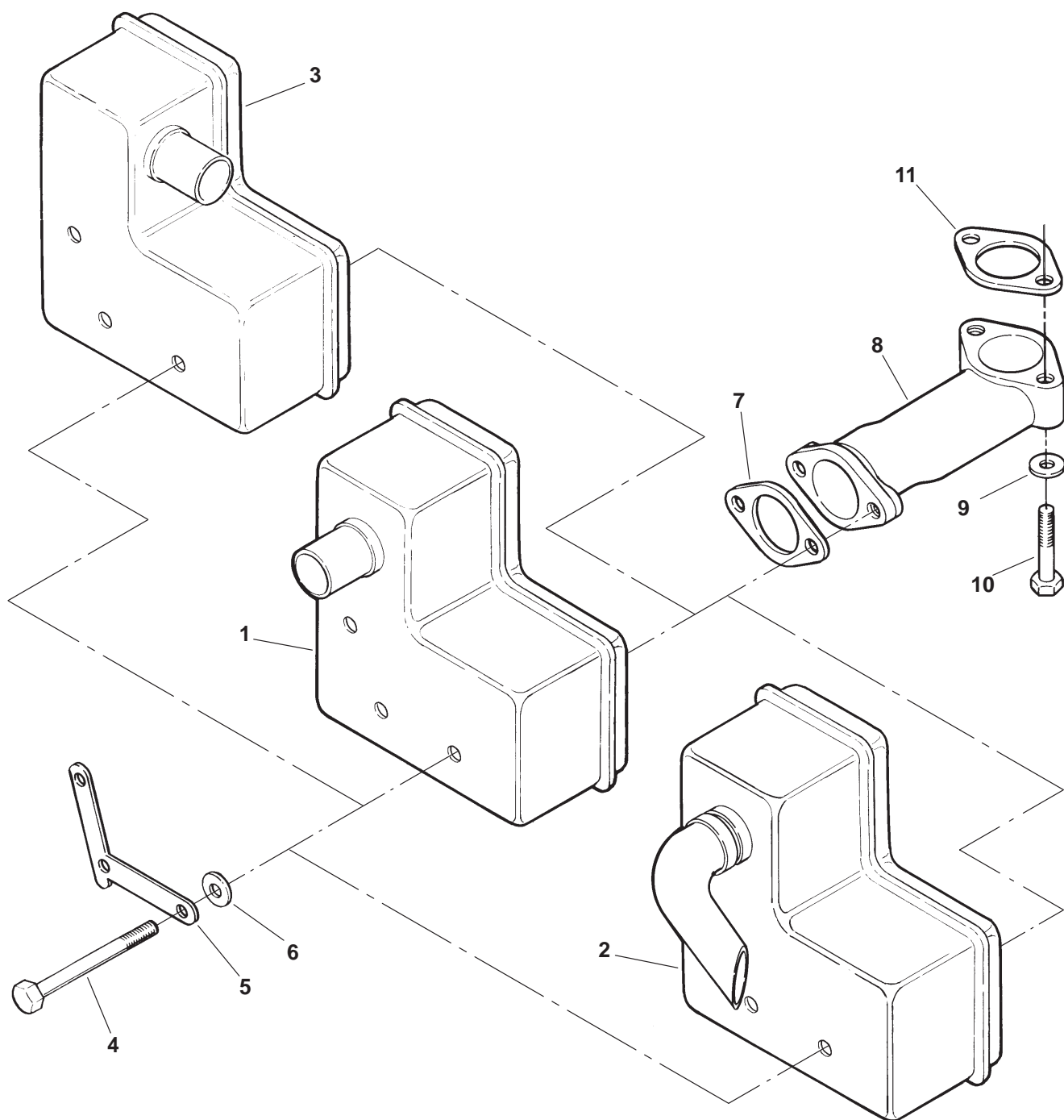
REF NO.	PART NO.	QTY USED	PART DESCRIPTION	REF NO.	PART NO.	QTY USED	PART DESCRIPTION
1	134-4743-50	1	Deflector, Air Spec A and B	5	740-1006	2	Washer, Flat (M8)
	134-4978-02	1	Begin Spec C	6			Screw, Hex Head Cap (M8 x 16mm)
2	718-1017	1	Screw, Hex Head Cap (M6 x 10mm)		718-1035	1	Use as replacement in used Oil Base
3	740-1004	1	Washer, Flat (M6)		815-0809	1	Use on new Oil Base only
4			Screw, Hex Head Cap (Use as Needed)	7	148-1003-03	1	Bracket, Carburetor Guard
	718-1032	1	Spec A, B (M8 x 10mm)	8	870-2055	1	Nut, Lock Flange (M8)
	800-2054	1	Begin Spec C (M8 x 14mm)				

Air Cylinder Housing



REF NO.	PART NO.	QTY USED	PART DESCRIPTION	REF NO.	PART NO.	QTY USED	PART DESCRIPTION
1	134-4742-50	1	Housing, Cylinder Air	3	718-1017	1	Screw, Hex Head Cap (M6 x 10mm)
2			Screw, Hex Head Cap (Use as Needed)	4	740-1004	1	Washer, Flat (M6)
	718-1032	4	Spec A, B (M8 x 10mm)	5	740-1006	4	Washer, Flat (M8)
	800-2054	4	Begin Spec C (M8 x 14mm)				

Muffler
(Code 21BP, 21BS, 21BU, 21BV)



Muffler
(Code 21BP, 21BS, 21BU, 21BV)

REF NO.	PART NO.	QTY USED	PART DESCRIPTION	REF NO.	PART NO.	QTY USED	PART DESCRIPTION
1	155-2379	1	~Muffler, Side Exhaust (Code 21BP)	541-0346	1	Kit, Muffler	
2	155-2487	1	^Muffler, Side Mount 45 Degree Angle (Code 21BS)		541-0347	1	Wide, Front Exhaust (Includes Parts Marked + and *)
3			Muffler, Front Exhaust	541-0398		1	Wide, Side Exhaust (Includes Parts Marked ~ and *)
	155-2446	1	+ Wide (Code 21BU)		541-0345	1	Wide, Side Exhaust 45° Angle (Includes Parts Marked ^ and *)
	155-2445	1	# Narrow (Code 21BV)	541-0376		1	Narrow, Front Exhaust (Includes Parts Marked #)
4			Screw, Hex Head Cap		1		Kit, Exhaust Manifold (Includes Parts Marked °)
	718-1808	3	* (M8 x 100mm)				
	718-1047	3	# (M8 x 75mm)				
5	155-2451-02	1	*#Retainer, Bolt				
6	740-1006	3	*#Washer, Flat (M8)				
7	155-2378	1	°#Gasket				
8	155-2377	1	°Elbow, Exhaust				
9	740-1006	2	°Washer, Flat (M8)				
10	718-1041	2	°Screw, Hex Head Cap (M8 x 45mm)				
11	155-2378	1	°Gasket				

~ – Parts Included in Side Exhaust Muffler Kit.

^ – Parts Included in Side Mount 45° Angle Kit.

+ – Parts Included in Wide Front Exhaust Muffler Kit.

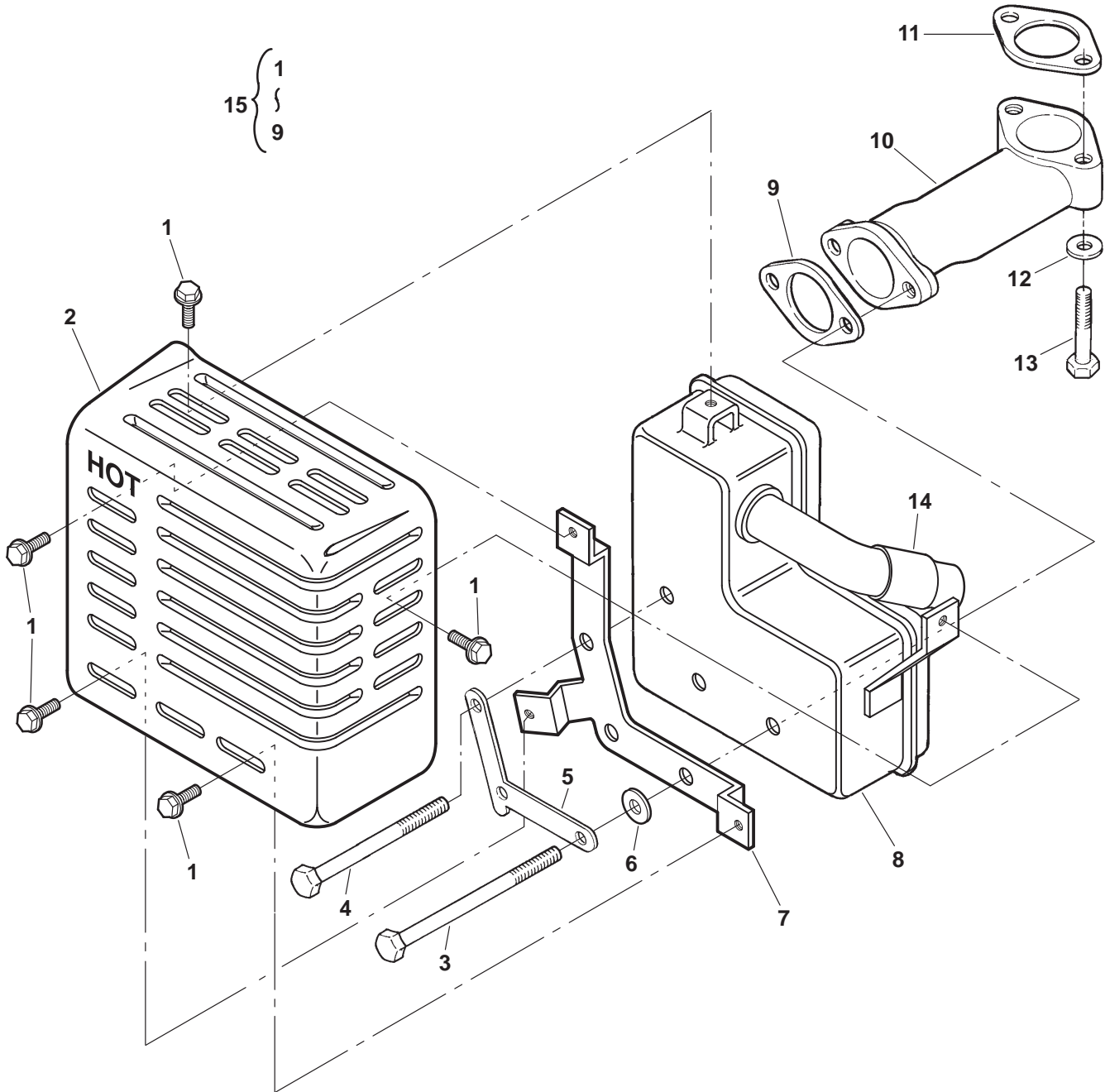
* – Mounting Hardware Included in Various Muffler Kits.

° – Parts Included in Exhaust Manifold Kit.

– Parts Included in Narrow Front Exhaust Muffler Kit.

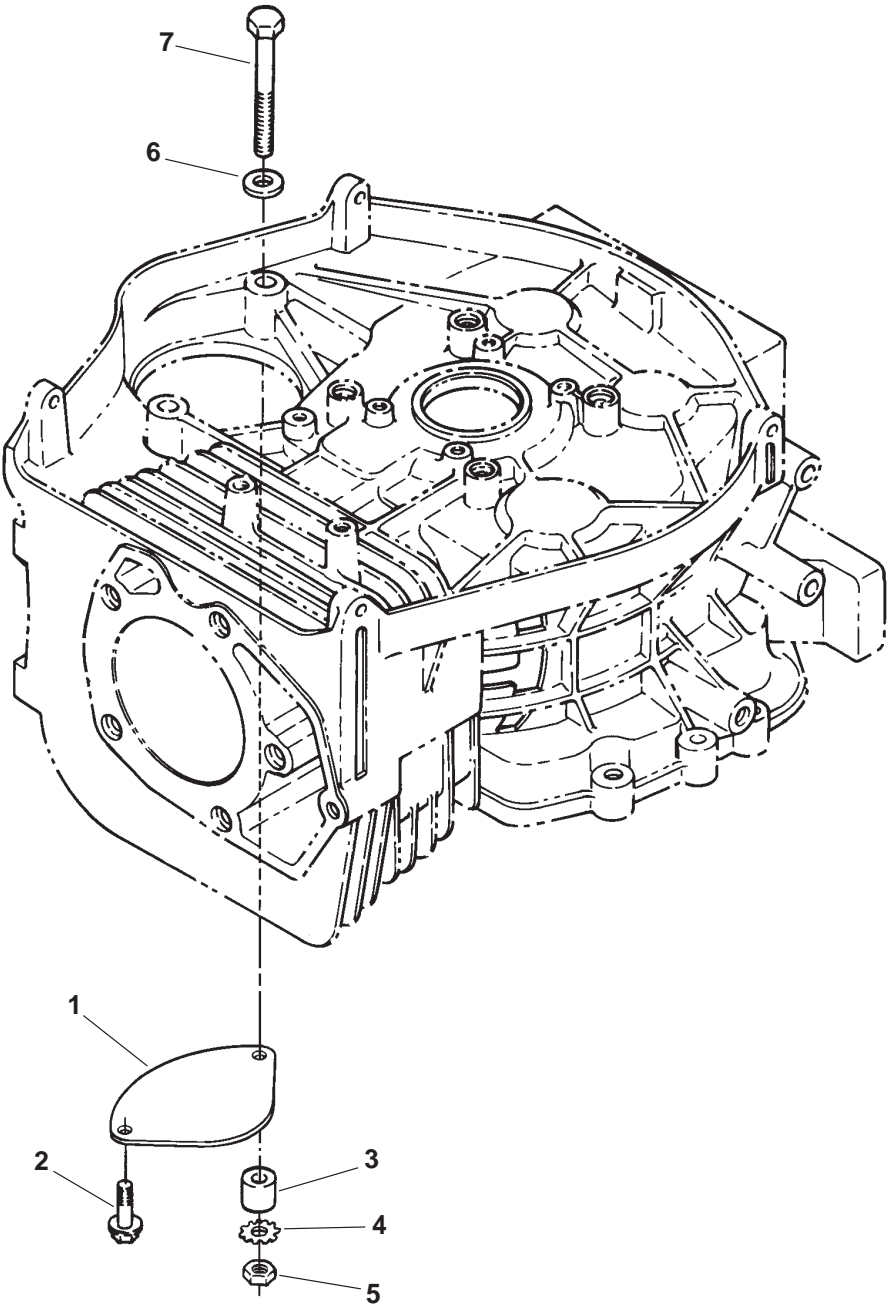
~ – Parts Included in Side Exhaust Muffler Kit.
^ – Parts Included in Side Mount 45° Angle Kit.
+ – Parts Included in Wide Front Exhaust Muffler Kit.
* – Mounting Hardware Included in Various Muffler Kits.
° – Parts Included in Exhaust Manifold Kit.
– Parts Included in Narrow Front Exhaust Muffler Kit.

Muffler (Code 21CG)



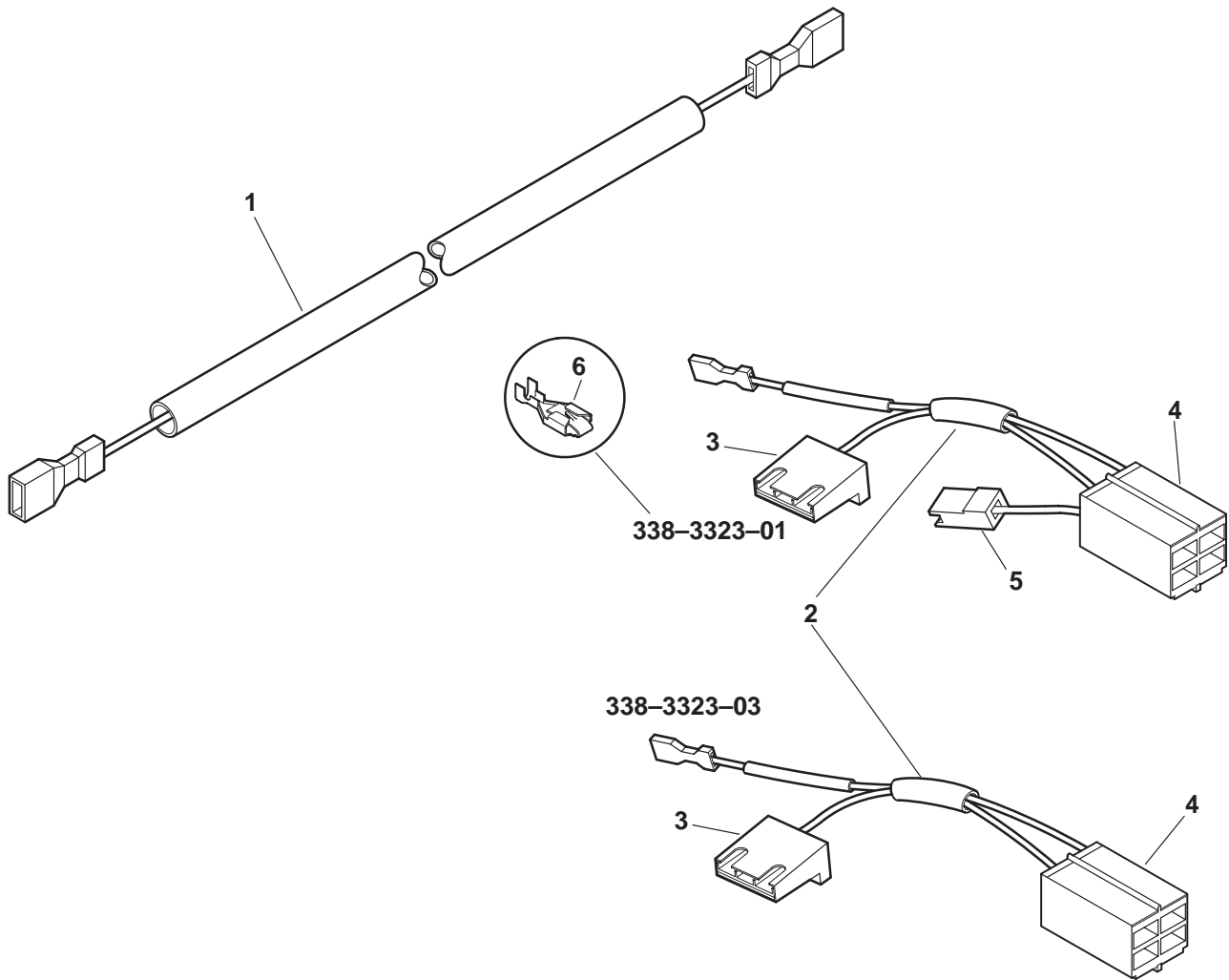
REF NO.	PART NO.	QTY USED	PART DESCRIPTION	REF NO.	PART NO.	QTY USED	PART DESCRIPTION
1	815-0340	5	*Screw, Hex Washer Head Thread Forming (#10-32 x 3/8")	9	155-2378	1	*Gasket
2	155-2857-02	1	*Guard, Muffler	10	155-2377	1	Elbow, Exhaust
3	718-1804	2	*Screw, Hex Head Cap (M8 x 110)	11	155-2378	1	Gasket
4	718-1808	1	*Screw, Hex Head Cap (M8 x 100mm)	12	740-1006	2	Washer, Flat (M8)
5	155-2451-02	1	*Retainer, Bolt	13	718-1041	2	Screw, Hex Head Cap (M8 x 45mm)
6	740-1006	3	*Washer, Flat (M8)	14	155-2429-01	1	Arrester, Spark
7	155-2858-02	1	*Bracket, Muffler Guard	15	541-0478	1	Kit, Muffler (Includes Parts Marked *)
8	155-2787	1	*Muffler, Side Outlet with Spark Arrestor	* - Parts Included in Muffler Kit			

Starter Hole Cover



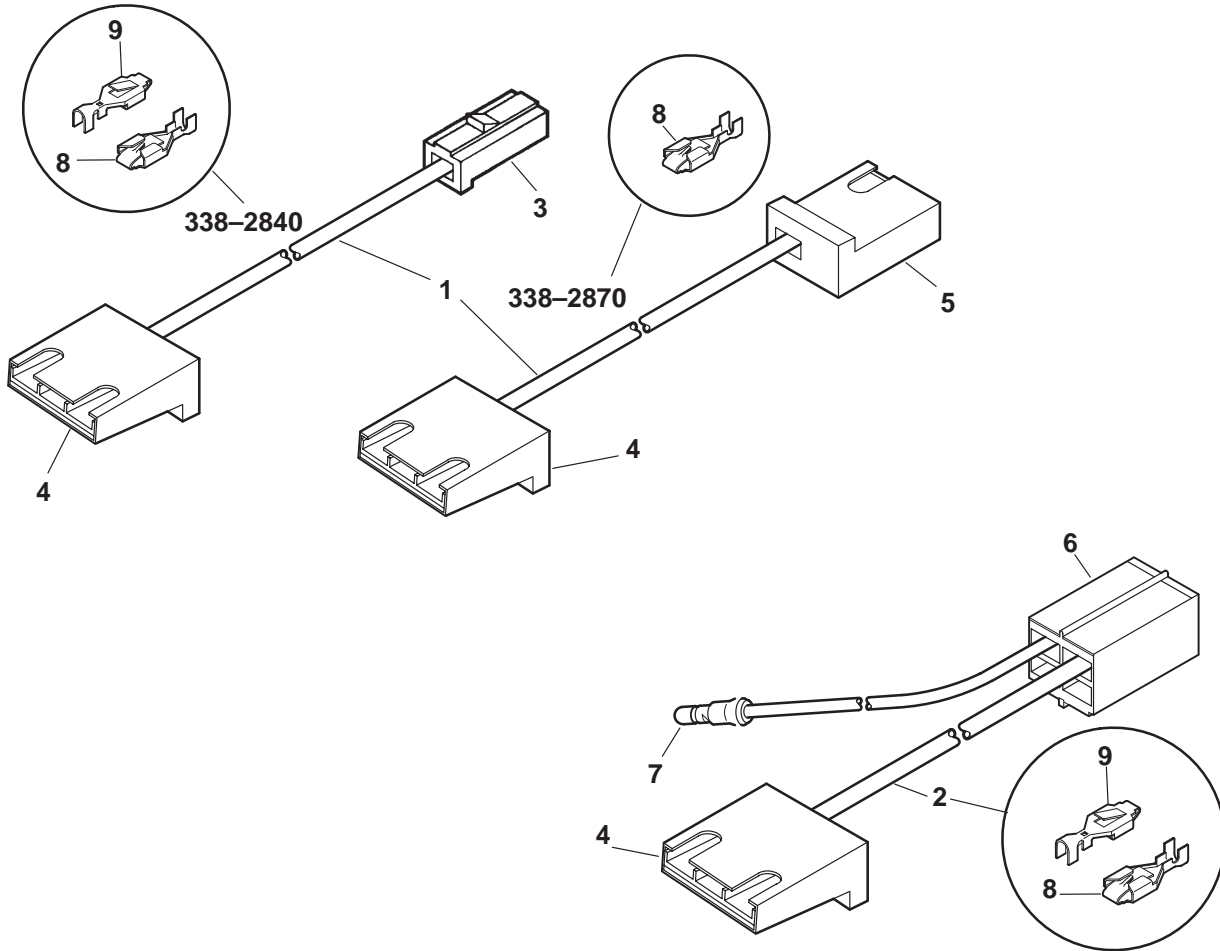
REF NO.	PART NO.	QTY USED	PART DESCRIPTION	REF NO.	PART NO.	QTY USED	PART DESCRIPTION
1	191-1924	1	Cover, Starter Hole	4	853-0016	1	Washer, ET Lock (5/16")
2			Screw, Hex Washer Head Cap Thread Forming (3/8-16 x 3/4")	5	750-1006	1	Nut, Hex (M8)
	815-0384	2	Spec A	6	740-1006	1	Washer, Flat (M8) (Begin Spec B)
	815-0384	1	Begin Spec B	7	718-1044	1	Screw, Hex Head Cap (M8 x 60mm) Begin Spec B
3	370-4064	1	Spacer, Starter (Begin Spec B)				

Wiring Harness (Code 35BM, 35BH)



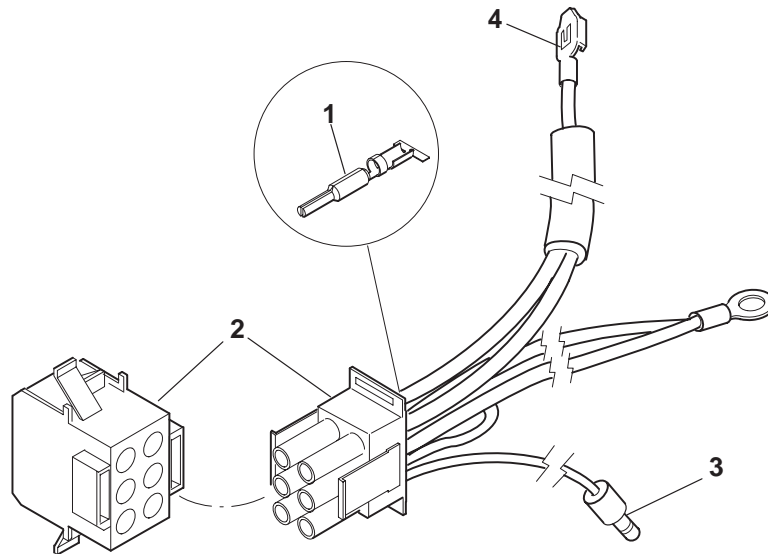
REF NO.	PART NO.	QTY USED	PART DESCRIPTION	REF NO.	PART NO.	QTY USED	PART DESCRIPTION
1	338-2527	1	Harness, Wiring (Code 35BM)	4	323-1721	1	Body, Connector
2			Harness, Wiring (Code 35BH)	5	323-1216	1	Body, Connector
	338-3323-01	1	Spec 11266	6	332-2073	1	Connector, Terminal
	338-3323-03	1	Spec 11265				
3	323-1585	1	Body, Connector				

Wiring Harness (Code 35CE)



REF NO.	PART NO.	QTY USED	PART DESCRIPTION	REF NO.	PART NO.	QTY USED	PART DESCRIPTION
1	338-2840	1	Harness, Wiring (Code 35CE) Spec 11148, 11152, 11263 (1 Wire, 1 Pin)	3	323-1584	1	Body, Connector
	338-2870	1	Spec 11079, 11080, 11221, 11262, 11207, 11355 (1 Wire, 2 Pin)	4	323-1585	1	Body, Connector
2	338-3255	1	Harness, Wiring (Code 35CE) (Spec 11350) (2 Wire, 4 Pin)	5	323-1610	1	Body, Connector
				6	323-1721	1	Body, Connector
				7	332-3279	1	Connector, Bullet
				8	332-2073	1	Connector, Terminal
				9	323-0714	1	Connector, Terminal

Wiring Harness (Code 35CA)



REF NO.	PART NO.	QTY USED	PART DESCRIPTION	REF NO.	PART NO.	QTY USED	PART DESCRIPTION
	338-3652	1	Harness, Wiring (Code 35CA) (Spec 11562) (7 Wire)	3	332-3279	1	Connector, Bullet
1	323-1647	6	Pin, Terminal	4	332-2073	1	Connector, Terminal
2	323-1643-02	1	Housing, Cap				

Labels, Paint, Thread Sealant and Gasket Kits

REF NO.	PART NO.	QTY USED	PART DESCRIPTION	REF NO.	PART NO.	QTY USED	PART DESCRIPTION
			Label, Model Identification	168-0220	1		Kit, Engine Gasket (Begin Spec C) (Includes Parts Marked +)
98-5975-01	1		E125 Used on Air Cleaner Cover	102-1462	1		+Gasket Set, Engine
98-5975-02	1		E125 Used on Blower Housing	110-3586	1		+Seal, Valve Stem
98-6378-01	1		E140 Used on Air Cleaner Cover	110-3591	1		+Gasket, Cylinder Head
98-6378-02	1		E140 Used on Blower Housing	140-2772	1		+Gasket, Air Cleaner
525-0394	-		Paint, Black Enamel (16 oz. Pressurized Spray Can)	150-2547	1		+Retainer, Governor Gear
98-7330	1		Label, Identifier – Low Speed Unit (Orange)	155-2378	1		+Gasket, Exhaust Manifold
518-0452	-		Sealant, Thread (50 cc Bottle)	508-1076	1		+Grommet, Fuel Pump
541-0471-01	1		Kit, Extension Cord (Includes Extension Cord)	509-0142	1		+O'Ring
335-0176	1		Cord, Extension	509-0253	1		+O'Ring
541-0313	1		Kit, Field Conversion (To Electric Starter)	509-0255	1		+Seal, Governor Shaft
168-0186	1		Kit, Engine Gasket (Spec A,B) (Includes Parts Marked *)	509-0258	1		+Seal, Oil
102-1365	1		*Gasket, Oil Drain Flange	509-0269	1		+Seal, Oil Fill Tub
110-3586	1		*Seal, Intake Valve Stem				
110-3588	1		*Gasket, Oil Base	168-0211	1		Kit, Valve Grind Gasket (Includes Parts Marked #)
110-3591	1		*Gasket, Cylinder Head	110-3586	1		#Seal, Valve Stem
110-3830	1		*Gasket, Cylinder Head Cover	110-3591	1		#Gasket, Cylinder Head
120-1221	1		*Gasket, Copper	110-3830	1		#Gasket, Cylinder Head Cover
140-2329	1		*Gasket, Air Cleaner Adapter	146-0584	1		#Gasket, Intake
146-0484	1		*Gasket, Intake Elbow	155-2378	1		#Gasket, Exhaust Manifold
146-0486	2		*Gasket, Insulation				
155-2378	1		*Gasket, Exhaust Elbow				
509-0252	1		*O'Ring – Oil Pickup				
509-0253	1		*O'Ring – Oil Pump				
509-0254	1		*O'Ring – Oil Fill				
509-0258	1		*Seal, Oil				

* – Parts Included in Engine Gasket Kit (Spec A,B).

+ – Parts Included in Engine Gasket Kit (Begin Spec C)

– Parts Included in Valve Grind Gasket Kit.

SALES OPTION CODE DEFINITIONS

11AU	Standard Block	21AM	Elbow, 90 Degree Exhaust
13BM	3850 High Idle	21BP	Muffler, Side Outlet (Wide)
13BN	3600 High Idle	21BS	Muffler, Side Outlet (Wide) (45 Degree)
13BP	3300 High Idle	21BU	Muffler, Front Outlet (Wide)
13BW	1300 Low Idle	21CG	Muffler, Front Outlet (Wide)
13BY	1400 Low Idle	23DC	Pressure Cooled Housing and Wheel
13BZ	1500 Low Idle	23DJ	No Rotating Screen
13CE	1800 Low Idle	23DN	Stationary Guard (No PTO–Plastic) – Onan Logo
13CM	3400 RPM High Idle	23EG	Wheel, Blower
13CP	Governor, Vertical Pull	23EM	Cooling, Air Precleaner & Support
13CR	3550 RPM High Idle	31AY	Electronic Ignition
13CT	3250 High Idle	31AZ	Alternator, 12V/20A
13CZ	3100 RPM High Idle	31BB	Alternator, 12V/15A
13DC	Governor, Vertical Pull – With Throttle Shutdown, Variable Speed	31BD	No Alternator
13GH	2700 RPM High Idle	31BK	Alternator, 12V/2.5A (With Regulator)
15BA	Pump, Fuel – Filter (Top Inlet)	31BL	Alternator, 12V/2.5A (Without Regulator)
15BB	No Pump, – Filter	31BN	Alternator, 12V/5A (With Regulator)
15BC	No Pump–No Filter	31BP	Alternator, 12V/5A (Without Regulator)
15BE	Carburetor, Sidedraft	31BS	Alternator, 8A, Rectifier (Unregulated)
15BM	Pump, Fuel – No Filter (Top Inlet)	33AT	Starter Solenoid Shift (Side) Standard
15CD	Choke, Top Pull	33AY	Recoil Starter
15CE	Choke, Bottom Pull	33AZ	Starter Solenoid Shift and Recoil
15CF	Control, Throttle–Dual	33BC	Starter, 110V
15CH	No Pump – Filter–Bracket – 11” Line	35AU	Low Oil Pressure Switch (1 Terminal Normally Closed)
15CP	Pump, Fuel – Filter	35AV	Low Oil Pressure Switch (2 Terminal Normally Open)
15CS	Pump, Fuel–Without Filter	35BH	Harness, 4 Pin
17BW	Oil Base, Standard Capacity Side Drain	35BM	Harness, 1 Wire
17CD	Filter, Oil (3.4” Filter Length)	35BW	Low Oil Pressure Switch (2 Terminal, Normally Open–Normally Closed, Internal Ground)
17CE	No Oil Filter	35CA	Harness, 7 Wire with Connector
17CF	Oil Fill Tube & Indicator – Outer Extension	35CE	Harness, 2 Wire Without Connector
17CG	Base, Oil – Standard Capacity (Optional Drains)	35CU	Harness, 3 Wire/Single Connector
17DD	Oil Fill and Indicator (Short)	45DW	Crankshaft 1.00 Diameter St Shaft
17DP	Filter, Oil (2.9” Filter Length)	47AL	Omit Labels
17DT	Base, Oil, Standard – Side Drain, With Valve	47AR	Finishing List
19AS	Air Cleaner, Standard Capacity	47BA	Nameplate – Standard Location
19AW	Air Intake System, Standard Capacity	47BJ	Labels
19CG	Air Cleaner without Duct		
19CH	Air Cleaner, Standard Capacity – With Seal		

Sales Option Code Table

<u>SPEC NO.</u>	<u>10879</u>	<u>10880</u>	<u>10883</u>	<u>10884</u>	<u>10885</u>	<u>10886</u>	<u>10887</u>	<u>10963</u>	<u>10964</u>	<u>10993</u>	<u>11058</u>	<u>11059</u>
SALES OPTION CODE NUMBERS	11AU	11AU	11AU	11AU	11AU	11AU	11AU	11AU	11AU	11AU	11AU	11AU
	13BN	13BN	13BN	13BN	13BN	13BN	13BN	13BZ	13CE	13BN	13BP	13BP
	13BW	13BW	13BW	13BW	13BW	13BW	13BW	13CP	13CP	13BY	13BW	13BW
	13CP	13CP	13CP	13CP	13CP	13CP	13CP	13CR	13CT	13CP	13CP	13CP
	15BB	15BB	15BB	15BA	15BA	15BA	15BA	15BE	15BB	15BB	15BE	15BE
	15BE	15BE	15BE	15BE	15BE	15BE	15BE	15BM	15BE	15BE	15CH	15CH
	17BW	17BW	17BW	17BW	17BW	17BW	17BW	17BW	15CD	15CD	17BW	17BW
	17CE	17CE	17CE	17CE	17CE	17CE	17CE	17CD	17BW	17BW	17CD	17CF
	17DD	17DD	17DD	17DD	17DD	17DD	17DD	17CF	17DD	17CF	17DD	17DP
	19AW	19AW	19AW	19AW	19AW	19AW	19AW	19AW	17DP	17DP	19CH	19CH
	21AM	21AM	21AM	21AM	21AM	21AM	21AM	21AM	19AW	19AW	21AM	21AM
	21BP	21BP	21BP	21BP	21BP	21BP	21BP	21BS	23DC	21AM	21BP	21BP
	23DC	23DC	23DC	23DC	23DC	23DC	23DC	23DC	23EG	21BP	23DC	23DC
	31AY	31AY	31AY	31AY	31AY	31AY	31AY	23DN	31AY	23DC	31AY	31AY
	31BL	31BK	33AY	31BB	31BB	31BK	31BK	31AY	31AZ	23EG	31BL	31BK
	33AY	33AT	45DW	33AT	33AY	33AT	33AY	31BB	33AT	31AY	33AY	33AZ
	45DW	45DW	47AR	45DW	45DW	45DW	45DW	33AT	35BM	31AZ	35AU	35AU
	47AR	47AR		47AR	47AR	47AR	47AR	35AU	45DW	33AY	45DW	35BM
								35BM	47AL	35AU	47AR	45DW
								45DW	47AR	45DW		47AL
								47AR		47AR		47AR

<u>SPEC NO.</u>	<u>11068</u>	<u>11078</u>	<u>11079</u>	<u>11080</u>	<u>11102</u>	<u>11114</u>	<u>11118</u>	<u>11131</u>	<u>11139</u>	<u>11148</u>	<u>11152</u>	<u>11176</u>
SALES OPTION CODE NUMBERS	11AU	11AU	11AU	11AU	11AU	11AU	11AU	11AU	11AU	11AU	11AU	11AU
	13BN	13BN	13BN	13BN	13CE	13BY	13BN	13BN	13BN	13BW	13BM	13BN
	13BY	13BY	13BY	13BY	13CP	13CM	13BY	13BY	13BY	13CZ	13BY	13BY
	13CP	13CP	13CP	13CP	13CR	13CP	13CP	13CP	13CP	13CP	13CP	13CP
	15BE	15BB	15BE	15BE	15BE	15BB	15BB	15BE	15BC	15BE	15BE	15BB
	15CD	15BE	15CD	15CD	15BM	15BE	15BE	15CD	15BE	15CD	15CD	15BE
	15CP	17BW	15CP	15CP	17BW	15CE	15CD	15CP	15CF	15CP	15CP	15CD
	17BW	17CD	17CG	17CG	17DD	17BW	17BW	17BW	17BW	17BW	17BW	17BW
	17CE	17CF	17DD	17DD	17DP	17CF	17DD	17CF	17CE	17CF	17DD	17DD
	17DD	19AW	17DP	17DP	19AW	17DP	17DP	17DP	17DD	17DP	17DP	17DP
	19AS	19CG	19AS	19AS	21AM	19AW	19AW	19AS	19AW	19AS	19AS	19AS
	23DC	21AM	23DC	23DC	21BS	21AM	23DC	21AM	21AM	21AM	23DC	21AM
	23DJ	21BP	23DJ	23EG	23DC	21BP	23EG	21BU	21BP	21BU	23EG	21BU
	23EG	23DC	23EG	31AY	23DN	23DC	31AY	23DC	23DC	23DC	31AY	23DC
	31AY	23EG	31AY	31AZ	23EG	23EG	31AZ	23DJ	23DJ	23EG	31AZ	23DJ
	31BD	31AY	31BN	33AT	31AY	31AY	33AZ	23EG	23DN	31AY	33AT	23EG
	33AY	31BB	33AY	35AU	31AZ	31AZ	35AU	31AY	23EG	31BN	45DW	31AY
	45DW	33AY	35AU	35CE	33AT	33AT	35BM	31BD	31AY	33AY	47AR	31BN
	47AR	35AU	35CE	45DW	35BM	35AU	45DW	33AY	31AZ	35AU	47BJ	35AU
	47BJ	45DW	45DW	47AR	45DW	45DW	47AR	35AU	33AT	45DW		33AZ
		47AR	47AR	47BJ	47AL	47AR		45DW	35BM	47AL		35BM
			47BJ		47AR			47AR	45DW	47AR		45DW
								47BJ	47AR			47AR

Sales Option Code Table

<u>SPEC NO.</u>	<u>11195</u>	<u>11207</u>	<u>11221</u>	<u>11261</u>	<u>11262</u>	<u>11263</u>	<u>11265</u>	<u>11266</u>	<u>11272</u>	<u>11299</u>	<u>11301</u>	<u>11308</u>
SALES OPTION CODE NUMBERS	11AU	11AU	11AU	11AU	11AU	11AU	11AU	11AU	11AU	11AU	11AU	11AU
	13BN	13CE	13BN	13BN	13BN	13BN	13BN	13BN	13BN	13BN	13BN	13BN
	13BY	13CP	13BY	13BY	13BY	13BY	13BY	13BY	13BY	13BY	13BY	13BY
	13CP	13CT	13CP	13CP	13CP	13CP	13CP	13CP	13CP	13CP	13CP	13CP
	15BB	15BE	15BE	15BE	15BE	15BE	15BE	15BE	15BB	15BB	15BB	15BB
	15BE	15CD	15CD	15CD	15CD	15CD	15CD	15CD	15BE	15BE	15BE	15BE
	15CD	15CS	15CP	15CP	15CP	15CP	15CP	15CP	15CD	15CD	15CD	15CD
	17BW	17BW	17CG	17CG	17CG	17CG	17CG	17CG	17BW	17BW	17BW	17BW
	17CF	17DD	17DD	17DD	17DD	17DD	17DD	17DD	17DD	17DD	17DD	17DD
	17DP	17DP	17DP	17DP	17DP	17DP	17DP	17DP	17DP	17DP	17DP	17DP
	19CH	19AS	19AS	19AS	19AS	19AS	19AS	19AS	19AS	19AS	19AS	19AS
	21AM	23DC	21AM	23DC	23DC	23DC	23DC	23DC	21AM	21AM	21AM	21AM
	21BU	23EG	21BU	23DJ	23DJ	23EG	23DJ	23EG	21BU	21CG	21CG	21CG
	23DC	31AY	23DC	23EG	23EG	31AY	23EG	31AY	23DC	23DC	23DC	23DC
	23EG	31AZ	23DJ	31AY	31AY	31AZ	31AY	31AZ	23DJ	23DJ	23DJ	23DN
	31AY	33AT	23EG	31BD	31BN	33AT	31BN	33AT	23EG	23EG	23EG	23EG
	31BN	35CE	31AY	33AY	33AY	35CE	33AY	35BH	31AY	31AY	31AY	23EM
	33AZ	45DW	31BN	45DW	35CE	45DW	35BH	45DW	31AZ	31AZ	31BS	31AY
	35AU	47AL	33AY	47AR	45DW	47AR	45DW	47AR	33AZ	33AZ	33AY	31BS
	35BM	47AR	35CE	47BJ	47AR	47BJ	47AR	47BJ	35AU	35AU	35AU	33BC
	45DW		45DW		47BJ		47BJ		35BM	35BM	33BC	35AU
	47AR		47AR						45DW	45DW	35BM	35BM
			47BJ						47AR	47AR	45DW	45DW
											47AR	47AR

<u>SPEC NO.</u>	<u>11350</u>	<u>11355</u>	<u>11443</u>	<u>11444</u>	<u>11504</u>	<u>11545</u>	<u>11562</u>
SALES OPTION CODE NUMBERS	11AU	11AU	11AU	11AU	11AU	11AU	11AU
	13CE	13BN	13CE	13CE	13BY	13BY	13BY
	13CP	13BY	13CP	13CP	13CM	13CM	13CM
	13CT	13CP	13CT	13GH	13DC	13DC	13CP
	15BE	15BE	15BE	15BE	15BC	15BC	15BE
	15CD	15CD	15CD	15CD	15BE	15BE	15CD
	15CP	15CP	15CP	15CP	15CD	15CD	15CP
	17BW	17CG	17BW	17BW	17DD	17DD	17BW
	17DD	17DD	17DD	17DD	17DP	17DP	17DD
	17DP	17DP	17DP	17DP	17DT	17DT	17DP
	19AS	19AS	19AS	19AS	19AS	19AS	19AS
	23DC	21AM	23DC	23DC	21AM	21AM	21AM
	23EG	21BP	23EG	23EG	21CG	23DC	23DC
	31AY	23DC	31AY	31AY	23DC	23DJ	23DJ
	31AZ	23EG	31AZ	31AZ	23DJ	23EG	23EG
	33AT	31AY	33AT	33AT	23EG	23EM	23EM
	35CE	31AZ	35CE	35CE	23EM	31AY	31AY
	45DW	33AZ	45DW	45DW	31AY	31AZ	31AZ
	47AR	35CE	47AL	47AL	31BP	33AT	33AT
	47BJ	45DW	47AR	47AR	33AY	35BW	35AV
		47AR	47BA	47BA	33BC	35CU	35CA
		47BJ			35AU	45DW	45DW
					35CU	47AR	47AL
					45DW	47BJ	47AR
					47AR		47BA
					47BJ		

Numerical Index

<u>Part No.</u>	<u>Page</u>	<u>Part No.</u>	<u>Page</u>	<u>Part No.</u>	<u>Page</u>	<u>Part No.</u>	<u>Page</u>
098-5975-01, 47		104-1809-06, 7		112-0244, 9		123-1915-50, 35	
098-5975-02, 47		104-1809-07, 7		112-0245, 9		123-1940, 27	
098-6378-01, 47		104-1827-01, 7		112-0276, 9		123-2043, 27	
098-6378-02, 47		104-1827-02, 7		112-0276-01, 9		123-2105, 35	
098-7330, 47		105-0649-01, 8		112-0276-02, 9		134-4737-50, 13	
102-1365, 17, 47		105-0649-02, 8		113-0330, 9		134-4738, 37	
102-1372, 17, 19		105-0649-03, 8		113-0330-01, 9		134-4739-50, 37	
102-1375, 17		105-0649-04, 8		113-0330-02, 9		134-4739-51, 37	
102-1382, 17		105-0649-05, 8		114-0355, 9		134-4739-54, 37	
102-1443, 15		105-0649-06, 8		114-0356, 9		134-4739-55, 37	
102-1462, 27, 47		105-0657, 8		114-0357, 9		134-4742-50, 39	
102-1465-01, 19		105-0658, 8		114-0357-01, 9		134-4743-50, 38	
102-1465-02, 19		105-0693-02, 8		115-0423, 15		134-4775, 13	
102-1465-03, 19		110-2752, 15		115-0424, 15		134-4899-00, 13	
104-1717, 6, 7		110-3578, 15		115-0426, 15		134-4899-01, 13	
104-1718, 6, 7		110-3579, 15		115-0427, 15		134-4899-02, 13	
104-1719, 6, 7		110-3580, 15		115-0429, 15		134-4978-02, 38	
104-1720, 6, 7		110-3581, 15		115-0473, 15		140-2329, 29, 47	
104-1721-01, 6, 7		110-3586, 47		115-0496, 15		140-2333, 25	
104-1721-02, 6, 7		110-3587, 15		120-0140, 19		140-2335-01, 29	
104-1721-03, 6, 7		110-3588, 17, 19, 47		120-1217, 17, 19		140-2383, 29	
104-1721-05, 6, 7		110-3591, 15, 47		120-1219, 17		140-2527, 29	
104-1721-07, 6, 7		110-3593, 15		120-1220, 17		140-2533, 29	
104-1721-08, 6, 7		110-3594, 15		120-1221, 17, 47		140-2534, 29	
104-1722, 6		110-3595, 15		120-1225, 17		140-2536-04, 27	
104-1723, 6		110-3596, 15		120-1226, 17		140-2584-50, 29	
104-1724, 6		110-3598, 15		120-1236, 19		140-2595, 29	
104-1725, 6		110-3693, 15		120-1237, 19		140-2650, 29	
104-1726-01, 6		110-3694, 15		120-1299-02, 17, 19		140-2657, 29	
104-1726-02, 6		110-3822, 15		122-0737, 19		140-2659, 29	
104-1726-03, 6		110-3825, 15		122-0770, 19		140-2674-01, 27	
104-1726-04, 6		110-3826, 15		123-1836, 15		140-2675, 27	
104-1726-05, 6		110-3827, 15		123-1840, 33		140-2676, 27	
104-1726-06, 6		110-3829, 19		123-1841, 33		140-2716-02, 27	
104-1726-07, 6		110-3830, 15, 47		123-1873-02, 34		140-2748, 27	
104-1809-01, 7		110-3860, 15		123-1874, 35		140-2761, 27	
104-1809-02, 7		110-3863-01, 15		123-1874-01, 35		140-2772, 27, 47	
104-1809-03, 7		110-3892, 5, 15		123-1875, 34		140-2810, 37	
104-1809-04, 7		110-3911, 15		123-1876, 34		140-2824-02, 37	
104-1809-05, 7		110-3912, 15		123-1913, 29		140-2825-01, 37	

Numerical Index

<u>Part No.</u>	<u>Page</u>	<u>Part No.</u>	<u>Page</u>	<u>Part No.</u>	<u>Page</u>	<u>Part No.</u>	<u>Page</u>
140-2853-02, 37		150-2305, 8		168-0186, 47		191-2207, 37	
140-2941-02, 27		150-2308, 21		168-0211, 47		191-2208, 25	
140-3010, 27		150-2338, 23		168-0220, 47		192-0433, 32	
140-3111, 29		150-2351, 23		185-2334, 30		192-0442, 32	
145-0678-02, 27		150-2515, 23		185-2367, 30		305-0718, 25	
146-0484, 25, 27, 47		150-2529, 8		185-2627, 9		309-0640, 19	
146-0485, 25		150-2530, 17		185-2656, 30		309-0646-06, 19	
146-0486, 25, 47		150-2547, 47		185-2657, 30		309-0646-09, 19	
146-0518, 25		150-2548, 23		185-2658, 30		313-0038, 23	
146-0526, 25		152-0155, 21		185-2659, 30		313-0039, 23	
146-0559, 25		152-0316, 21		185-2660, 30		323-0714, 45	
146-0560, 25		152-0317, 21		185-2661, 30		323-1216, 44	
146-0561, 25		152-0319, 23		185-2662, 30		323-1584, 45	
146-0567, 27		152-0326, 23		185-2663, 30		323-1585, 44, 45	
146-0568, 27		152-0330, 23		185-2664, 30		323-1610, 45	
146-0571-01, 27		152-0343, 23, 25, 27		185-2666, 10		323-1643-02, 46	
146-0571-02, 27		153-0514, 21		185-2707, 30		323-1647, 46	
146-0584, 27, 47		153-0621, 21, 23		185-2713, 30		323-1721, 44, 45	
146-0604, 27		153-0623, 21		185-2717, 32		332-0527, 23	
146-0605, 27		153-0630, 23		185-2718, 32		332-2073, 44, 45, 46	
146-0694, 27		153-0632, 23		185-2719, 32		332-3279, 45, 46	
146-0702, 27		153-0633-01, 23		185-2722, 32		335-0176, 47	
146-0704, 27		153-0650, 23		185-2767, 32		338-2524, 10	
148-1003-03, 38		154-2792, 25		185-2768, 32		338-2527, 44	
149-2206-01, 25		154-2908, 27		185-2889, 32		338-2840, 45	
149-2299, 24		155-2377, 41, 42		185-2942, 32		338-2870, 45	
149-2356, 24		155-2378, 41, 42, 47		185-2965, 30		338-3255, 45	
149-2371, 24		155-2379, 41		185-3681, 32		338-3323-01, 44	
149-2422, 24		155-2429-01, 42		185-5289, 32		338-3323-03, 44	
150-1269, 25		155-2445, 41		185-6386, 30		338-3652, 46	
150-2272, 17, 19		155-2446, 41		185-6957, 30		370-4056, 13	
150-2273, 17		155-2451-02, 41, 42		191-1456-02, 11		370-4057, 21, 23	
150-2275, 17		155-2487, 41		191-1456-03, 11		370-4064, 43	
150-2279, 21		155-2787, 42		191-1906, 5, 30		502-0313, 5, 24	
150-2287, 8		155-2857-02, 42		191-1924, 43		502-1111, 29	
150-2290, 21, 23		155-2858-02, 42		191-1967, 10, 11		502-1285-03, 19	
150-2301, 8		166-0799, 5		191-2127, 5, 31		502-1286-02, 19	
150-2302, 8		166-0835, 5		191-2130, 11		503-0170, 29	
150-2303, 8		167-0263-02, 15		191-2152, 31		503-0707, 24	
150-2304, 8		167-1621, 15		191-2153, 31		503-0731, 24, 25	

Numerical Index

<u>Part No.</u>	<u>Page</u>	<u>Part No.</u>	<u>Page</u>	<u>Part No.</u>	<u>Page</u>	<u>Part No.</u>	<u>Page</u>
503-0769, 19, 29		518-0560, 19		740-1008, 15		853-0016, 23, 34, 43	
503-1016, 24, 25		518-0566, 15		750-1004, 21, 23		854-0010, 24	
503-1133, 29		518-0576, 8		750-1006, 23, 34, 43		860-0011, 24	
503-1232, 24		518-0594, 23		775-0061, 11		870-0131, 25	
503-1274, 19		520-2033, 25		775-0074, 5		870-0410, 34	
503-1396, 29		520-2212, 21, 23		800-2036, 13		870-0465, 21, 30	
503-1422, 24		525-0394, 47		800-2054, 38, 39		870-0506, 8	
503-1445-04, 27		526-0115, 25, 27		800-2062, 23		870-0528, 23	
504-0186, 19		526-0122, 19		800-2063, 25, 27		870-2055, 38	
505-0110, 17		526-0140, 21, 23		800-3026, 15		870-2060, 13	
505-0266, 19		526-0405, 13		800-4072, 23			
505-1426, 5, 17, 24		541-0313, 47		813-0103, 25			
505-1515-02, 19		541-0345, 41		815-0340, 37, 42			
505-1516-02, 19		541-0346, 41		815-0359, 23			
508-0012, 29		541-0347, 41		815-0384, 43			
508-1076, 24, 47		541-0376, 41		815-0474, 27, 37			
509-0142, 34, 35, 47		541-0398, 41		815-0576, 34			
509-0252, 17, 47		541-0439, 37		815-0602, 21			
509-0253, 17, 19, 47		541-0471-01, 47		815-0638-01, 11			
509-0254, 33, 47		541-0478, 42		815-0709-01, 19			
509-0255, 8, 47		541-0488, 32		815-0753, 10, 11, 37			
509-0258, 5, 17, 19, 47		541-0489, 5		815-0754, 5, 10			
509-0269, 34, 35, 47		541-0508, 19		815-0756, 37			
509-0289, 15		718-1017, 13, 38, 39		815-0758, 21			
509-0304, 35		718-1019, 17		815-0759, 19			
509-0330, 15		718-1022, 17		815-0773, 32, 37			
510-0043, 19		718-1032, 38, 39		815-0775, 24			
510-0160, 5		718-1035, 38		815-0776, 21, 23			
510-0162, 5		718-1039, 21		815-0779, 23			
510-0163, 5, 17, 19		718-1041, 41, 42		815-0809, 38			
510-0182, 17, 19		718-1044, 43		815-0816, 27			
515-0293, 6, 7		718-1047, 41		815-0816-01, 27			
515-0294, 8		718-1804, 42		815-0829-02, 17, 19			
515-0295, 13		718-1808, 29, 41, 42		815-0833, 23			
515-0296, 6		718-1814, 5		821-0011, 25			
516-0059, 21, 23		720-1019, 17		821-2033, 37			
516-2004, 15		725-1029, 15		821-2045, 32			
517-0067, 19		740-1004, 15, 17, 21, 23, 27, 38, 39		823-0003-03, 11			
518-0452, 47		740-1006, 8, 21, 23, 29, 38, 39, 41, 42, 43		823-0003-05, 19			
518-0515, 19, 24				823-1003, 37			



Onan Corporation
1400 73rd Avenue N.E.
Minneapolis, MN 55432
1-800-888-ONAN
612-574-5000 International Use
Telex: 275477
Fax: 612-574-8087

Onan is a registered trademark of Onan Corporation