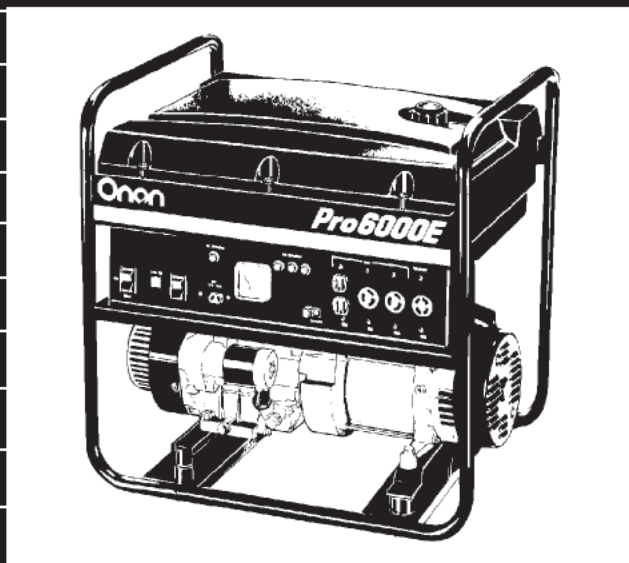


Onan *Portable GenSets* Parts Manual

1.7 & 2.5 EGH
1.4 & 2.0 EGH
Generating Set



Printed in U.S.A.

981-0242B
6-98 (Spec A-C)

Replaces 981-0242 4-93 (Spec A-B)
Replaces 981-0247 9-91 (Spec A-B)

MODEL IDENTIFICATION

To avoid errors or delay in filling your parts order, always give the MODEL, SPEC NO. and SERIAL NO. from the Onan nameplate.

For handy reference, insert your nameplate information in the spaces below.

MODEL AND SPEC NO.

SERIAL NO.

DIGITAL CONTROL SOFTWARE VERSION
AND DATE (IF APPLICABLE)

SAFETY PRECAUTIONS

The following symbols are used in Onan manuals to alert users to the potentially dangerous conditions relating to maintenance of equipment and replacement of parts. Please read and observe.



This symbol warns of immediate hazards which will result in severe personal injury or death.



This symbol refers to a hazard or unsafe practice which can result in severe personal injury or death.



This symbol refers to a hazard or unsafe practice which can result in severe personal injury or product or property damage.

PRODUCT SAFETY PRECAUTIONS



Service and repair of Onan equipment must be performed by trained, experienced personnel only. Improper service or repair may result in property damage, severe personal injury or death. Do not use this catalog as a guide to servicing your equipment. Read and follow the IMPORTANT SAFETY INSTRUCTIONS in the Service Manual appropriate for the equipment you are working on.



Contact with USED ENGINE OILS has been identified by a United States federal agency and some USA state agencies as causing CANCER or REPRODUCTIVE TOXICITY. When checking or changing engine oils take all necessary precautions not to ingest, breathe the fumes or contact the used oil.



Contact with ASBESTOS has been identified by a United States federal agency and some USA state agencies as causing CANCER or REPRODUCTIVE TOXICITY. When handling engine gaskets take all necessary precautions not to ingest, breathe or contact the dust from the gaskets! Use adequate ventilation and wear protective gloves, masks and clothing!



Contact with BENZINE and LEAD, found in gasoline, fuel additives and solvents has been identified by a United States federal agency and some USA state agencies as causing CANCER or REPRODUCTIVE TOXICITY. When checking, draining or adding gasoline and fuel additives or using solvents take all necessary precautions not to ingest, breathe the fumes or contact the liquids. Use adequate ventilation and wear protective gloves, masks and protective clothing!

PSP-1

Introduction

This manual applies to the Portable Generator Sets as listed in the Generator Set Data Table. Parts are arranged in groups of related items and each illustrated part is identified by a reference number corresponding to the same reference number in the parts list. Parts illustrations are typical. Using the model and specification number from your generator set nameplate, select parts that apply to your set. Right and left sides are determined by facing the engine end (front) of the set.

Generator Set Data Table

MODEL AND SPECIFICATION	WATTS	RPM	VOLTS	HERTZ	WIRE	PHASE	STARTING
1.7 EGH±AA/*	1700	3600	120	60	2	1	Recoil
2.5EGH±AA/*	2500	3600	120	60	2	1	Recoil
1.4EGH±AM/*	1400	3000	110/220	50		1	
2.0EGH±AM/*	2000	3000	110/220	50		1	

* ± The diagonal line (/) in the model and specification number separates generator set characteristics from the specification number and letter. The specification number denotes customer requested options or deviations from a standard model. The specification letter advances (A to B, B to C, etc.) with major manufacturing changes.

Index

- Adapter, Generator, **23, 24, 25**
- Arm, Rocker, **10**
- Axel, Dolly, **32**
- Axle, **33**

- Back, Control Box, **28**
- Bag, Tools, **22**
- Basket, Breather, **5**
- Bearing, Ball, **23, 24, 25**
- Bearing, Crankshaft Ball, **11**
- Block, Cylinder, **5**
- Body, Air Cleaner, **6, 7, 8**
- Bracket, Dolly Support, **32**
- Bracket, Fuel Tank, **12**
- Bracket, Lifting, **34**
- Breaker, Circuit, **27, 28**
- Breather, **5**
- Bumper, Dolly, **32**

- Cable, Battery Charging, **27, 28**
- Camshaft, **10**
- Cap, Gas, **12, 28**
- Cap, Plug ± Spark, **17, 18**
- Capacitor, **23, 24, 25**
- Carburetor, **6, 7, 8**
- Carburetor Components, **19, 20**
- Case, Starter ± Recoil, **14, 15, 16**
- Chamber, Float, **19, 20**
- Cir±Clip, Governor External, **13**
- Cir±Clip, Piston Pin Internal, **11**
- Cleaner Assy, Air, **6, 7, 8**
- Cleaner, Air, **6, 7, 8**
- Clip, Fuel Pipe, **12**
- Clip, Pipe, **12**
- Collar, Control Lever, **13**
- Connector (Spec 34879A/B), **28**
- Control (Spec 1, 14000), **27**
- Control (Spec 34879B), **28**
- Cotter, **5**
- Cover, Air Cleaner, **6, 7, 8**
- Cover, Breather, **5**
- Cover, Crankcase, **5**
- Cover, Cylinder Head, **10**
- Cover, End, **23, 24, 25**
- Cover, Fan, **17, 18**
- Cover, Muffler Flange, **9**
- Cover, Panel, **17**
- Cowling, Head ± Cylinder, **17, 18**
- Crankshaft, **11**
- Cup, Fuel Filter, **12, 21**

- Diode, **23, 24, 25**

- Elbow, Intake, **6, 7, 8**
- Element, Air Cleaner, **6, 7, 8**
- Element, Filter, **21**
- Element, Fuel Filter, **12**
- Endbell, **23, 24, 25**

- Engine, Replacement, **5**
- Extension, Exhaust, **32**

- Filter Assy, Fuel, **21**
- Filter, Fuel, **12**
- Float, Carburetor, **19, 20**
- Flyweight, **10**
- Flywheel, **17, 18**
- Fuel System, **12**

- Gasket, Air Cleaner, **6, 7, 8**
- Gasket, Carburetor, **6, 7, 8**
- Gasket, Crankcase, **5**
- Gasket, Cylinder Head, **5**
- Gasket, Cylinder Head Cover, **10**
- Gasket, Element, **7, 8**
- Gasket, Fuel Filter, **12, 21**
- Gasket, Governor Lever, **13**
- Gasket, Insulator, **6, 7, 8**
- Gasket, Intake Elbow, **6, 7, 8**
- Gasket, Muffler, **9**
- Gasket, Oil Drain Plug, **5**
- Gear, Camshaft, **10**
- Gear, Crankshaft, **11**
- Gear, Governor, **10**
- Generator, 1.7KW (Spec 1 Begin 7/90 & Spec 14000), **23**
- Generator, 2.4KW (Spec 34879B & 38018A), **25**
- Generator, 2.5KW (Spec 1 Begin 7/90 & Spec 14000), **24**
- Grip, Dolly, **32**
- Grip, Handle, **33**
- Guide, Push Rod, **10**
- Guide, Valve, **5**

- Handle, Dolly, **32**
- Handle, Rope ± Starter, **14, 15, 16**
- Handle, Wheel Kit, **33**
- Head, Cylinder, **5**

- Insulator, Carburetor, **6, 7, 8**

- Jet, Main, **19**
- Jet, Pilot, **19**

- Key, Camshaft Woodruff, **10**
- Key, Crankshaft Woodruff, **11**
- Kit, Dolly, **32, 33**
- Kit, Engine Gasket, **35**
- Kit, Lifting, **34**

- Label, Air Cleaner, **6, 7, 8**
- Label, Choke, **6, 7, 8**
- Label, Electronic, **14, 15, 16**
- Label, Speed, **17, 18**
- Labels, Control (Spec 1, 14000), **36**
- Lamp, LED, **18**
- Lamp, Oil (Spec 1, 14000), **17**
- Lamp, Oil (Spec 34879A/B), **28**
- Lever, Control, **13**

Index

Lever, Governor, **13**

Magneto (Spec 1, 14000), **17**
Magneto (Spec 34879, 38018), **18**
Magneto, Flywheel, **17, 18**
Mount, Vibration (Spec 1, 14000), **27**
Mount, Vibration (Spec 34879A/B), **28**
Muffler, **9**

Nameplate, **17, 18**

O'Ring, Fuel Filter, **12, 21**
O'Ring, Oil Fill Plug, **5**

Panel, Front ± Control (Spec 34879A/B), **28**
Pin, Decompression, **10**
Pin, Pipe, **5**
Pin, Piston, **11**
Piston, **11**
Plate, Air Cleaner, **6, 7, 8**
Plate, Control, **13**
Plate, Pressure, **13**
Plate, Transistor, **17, 18**
Plug, Oil Drain, **5**
Plug, Oil Fill, **5**
Plug, Spark, **17, 18**
Pulley, Start, **14, 15, 16**

Receptacle (Spec 34879A/B), **28**
Receptacle, Duplex (Spec 1, 14000), **27**
Receptacle, Duplex (Spec 34879A/B), **28**
Receptacle, GFI (Spec 34879A/B), **28**
Retainer, Cord, **5**
Retainer, Valve Spring, **5**
Ring, Piston, **11**
Rod, Connecting, **11**
Rod, Governor, **13**
Rod, Push, **10**
Rollcage (Spec 1, 14000), **27**
Rollcage (Spec 34879A/B), **28**
Rope, Starter, **14, 15, 16**
Rotor, **23, 24, 25**
Seal, Crankshaft Oil, **11**

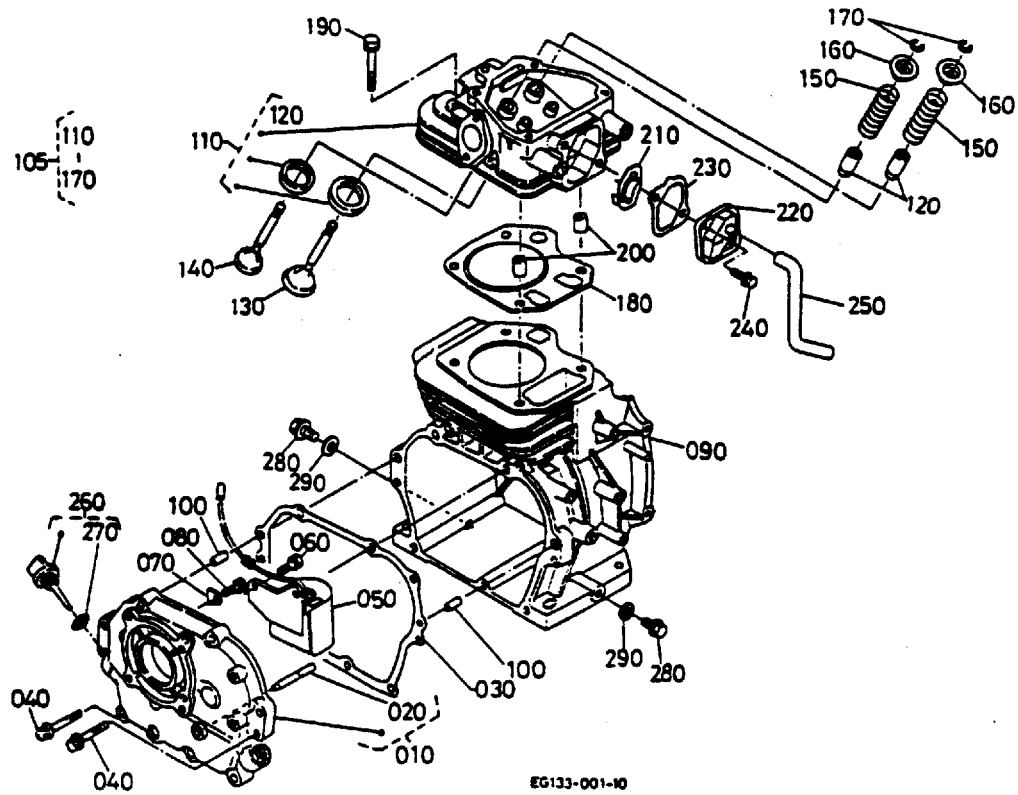
Shaft, Choke, **19, 20**
Shaft, Flyweight, **10**
Shaft, Governor, **5**
Shaft, Governor Lever, **13**
Shaft, Throttle, **19, 20**
Shield, Heat (Spec 34879A/B), **28**
Shield, Tank ± Gas (Spec 34879A/B), **28**
Shim, Camshaft, **10**
Shim, Crankshaft, **11**
Sleeve, Governor, **10**
Spring, Camshaft Decompression, **10**
Spring, Control Lever Lock, **13**
Spring, Governor, **13**
Spring, Governor Rod, **13**
Spring, Valve, **5**
Starter, Recoil, **14, 15, 16**
Stator, **23, 24, 25**
Stay, Intake Elbow, **6, 7, 8**
Stay, Muffler, **9**
Stopper, Governor Sleeve, **10**
Strap, Ground (Spec 1, 14000), **27**
Strap, Ground (Spec 34879A/B), **28**
Switch, On/Off (Spec 34879A/B), **28**
Switch, Stop, **17**

Tank, Fuel, **12**
Tank, Fuel (Spec 34879A/B), **28**
Tappet, **10**
Tools, **22**
Tube, Breather, **5**
Tube, Fuel, **12**

Valve, Choke, **19, 20**
Valve, Exhaust, **5**
Valve, Intake, **5**
Valve, Throttle, **19, 20**
Voltmeter (Spec 34879A/B), **28**

Watch, Oil, **5, 18**
Watch, Oil (Spec 1, 14000), **17**
Watch, Oil (Spec 34879A/B), **28**
Wheel, Dolly, **32**
Wheel, Dolly Kit, **33**

Cylinder Block

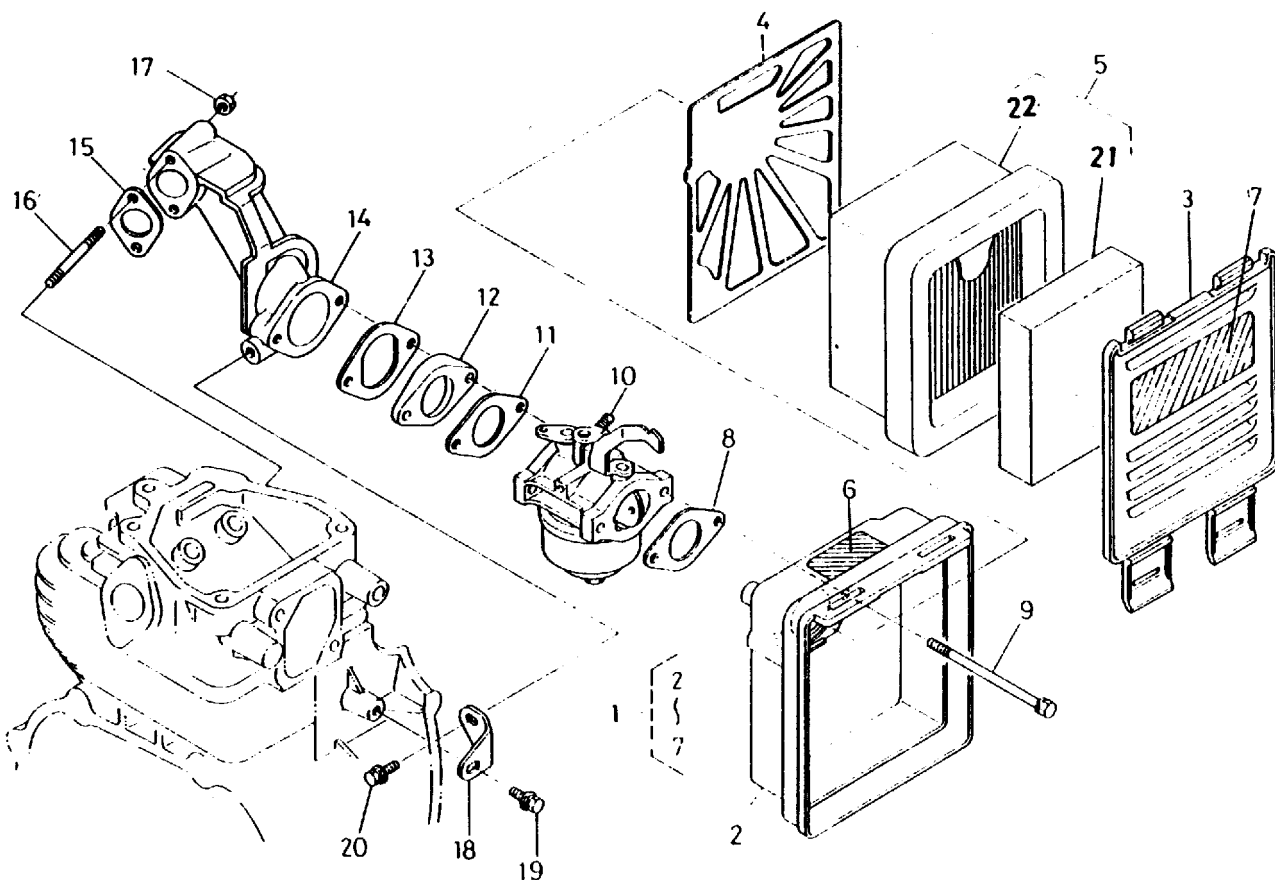


EG133-001-10

REF NO.	PART NO.	QTY USED	PART DESCRIPTION	REF NO.	PART NO.	QTY USED	PART DESCRIPTION
			Engine, Replacement	120	185±2865	2	Guide, Valve
			Spec A/B	130	185±2902	1	Valve, Intake
	100±2952	1	Spec 1, 14000	140	185±2922	1	Valve, Exhaust
	100±2954	1	Spec 34879, 38018	150	185±5203	2	Spring, Valve
	100±3359		Begin Spec C	160	185±5204	2	Retainer, Valve Spring
010	185±2788	1	Cover, Crankcase (Includes Governor Shaft)	170	185±5205	2	Cotter
020	185±7192	1	Shaft, Governor	180	185±2531	1	Gasket, Cylinder Head
030			Gasket, Crankcase	190	185±5096	4	Bolt, Cylinder Head
	185±2530	1	Spec A/B	200	185±5097	2	Pin, Pipe
	185±7161	1	Begin Spec C	210	185±2876	1	Breather
040	815±0781	6	Bolt	220	185±2877	1	Cover, Breather
050			Watch, Oil	230	185±2878	1	Gasket, Breather
	185±2526	1	Spec A/B	240	185±3730	2	Bolt
	185±7193	1	Begin Spec C	250	185±2519	1	Tube, Breather
060	185±5198	2	Bolt	260	185±3654	1	Plug, Oil Fill (Includes O'Ring)
070	185±2886	1	Retainer, Cord	270	185±3078	1	O'Ring
080	185±3730	1	Bolt	280	102±1367	2	Plug, Drain
090	NFS*	1	Block, Cylinder	290	185±3077	2	Gasket
100	185±3175	2	Pin, Straight				
110			Head, Cylinder (Includes Guides)				
	185±2921	1	Spec A/B				
	185±7162	1	Begin Spec C				

*Not For Sale ± Must Buy Replacement Engine

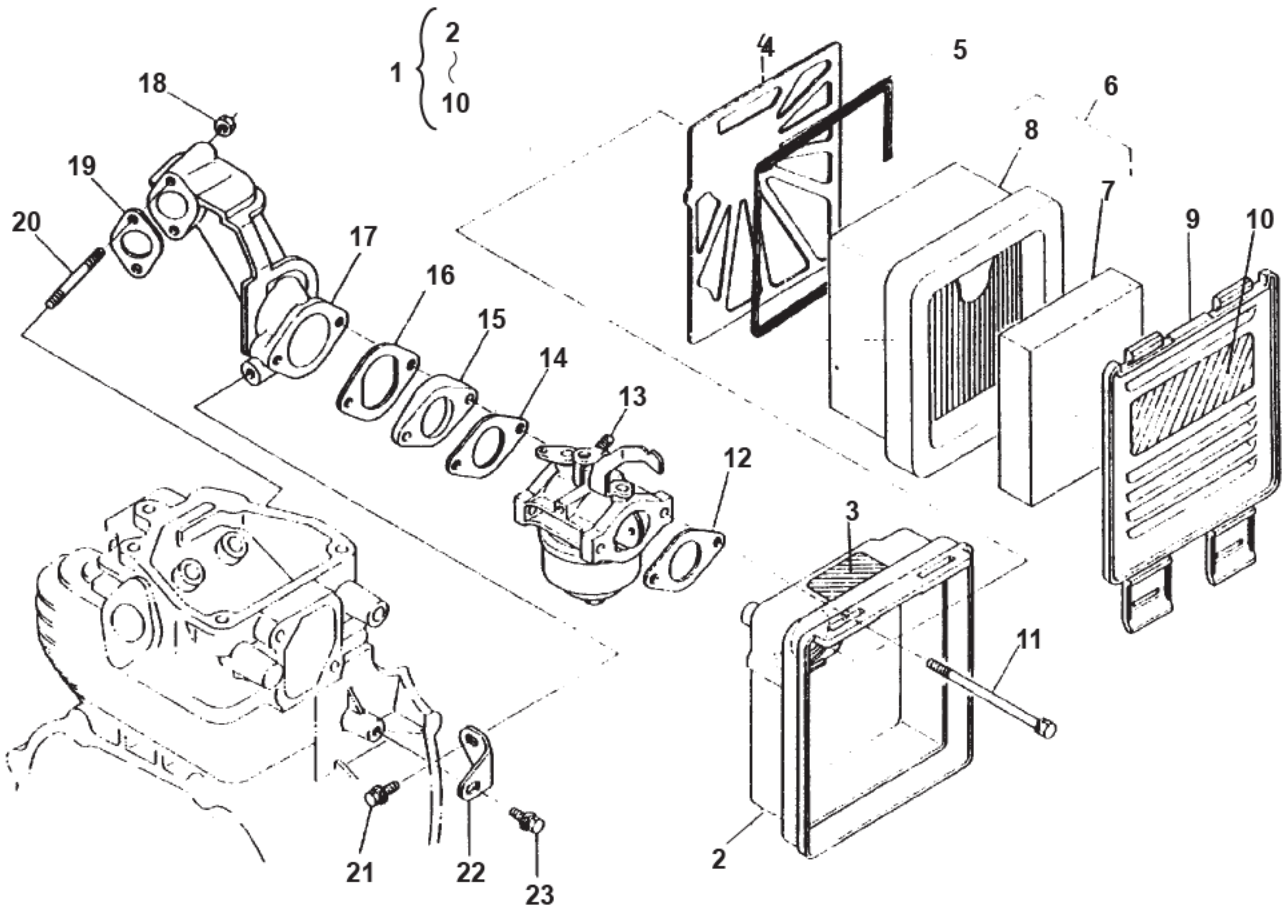
Air Cleaner (Style I) (Prior to ESN 551685, Prior to Spec C)



REF NO.	PART NO.	QTY USED	PART DESCRIPTION	REF NO.	PART NO.	QTY USED	PART DESCRIPTION
1	185±2789	1	Cleaner Assy, Air (Includes Parts Marked *)	13	185±2908	1	Gasket, Insulator
2	185±2925	1	*Body, Air Cleaner	14	185±2899	1	Elbow, Intake
3	185±2757	1	*Cover, Air Cleaner	15	185±2900	1	Gasket, Intake Elbow
4	185±2927	1	*Plate	16	185±2884	2	Stud
5	185±2541	1	*Element (Includes Primary and Secondary Elements)	17	185±3697	2	Nut
6	185±2931	1	*Label, Choke	18	185±2879	1	Stay, Intake Elbow
7	185±2933	1	*Label, Air Cleaner	19	185±3692	1	Bolt
8	185±2928	1	Gasket, Air Cleaner	20	815±3014	1	Bolt
9	185±2873	2	Bolt	21	185±5308	1	Element, Primary
10	185±2507	1	Carburetor	22	185±5309	1	Element, Secondary
11	185±2951	1	Gasket, Carburetor				
12	185±2907	1	Insulator				

* ± Parts Included in Air Cleaner Assy

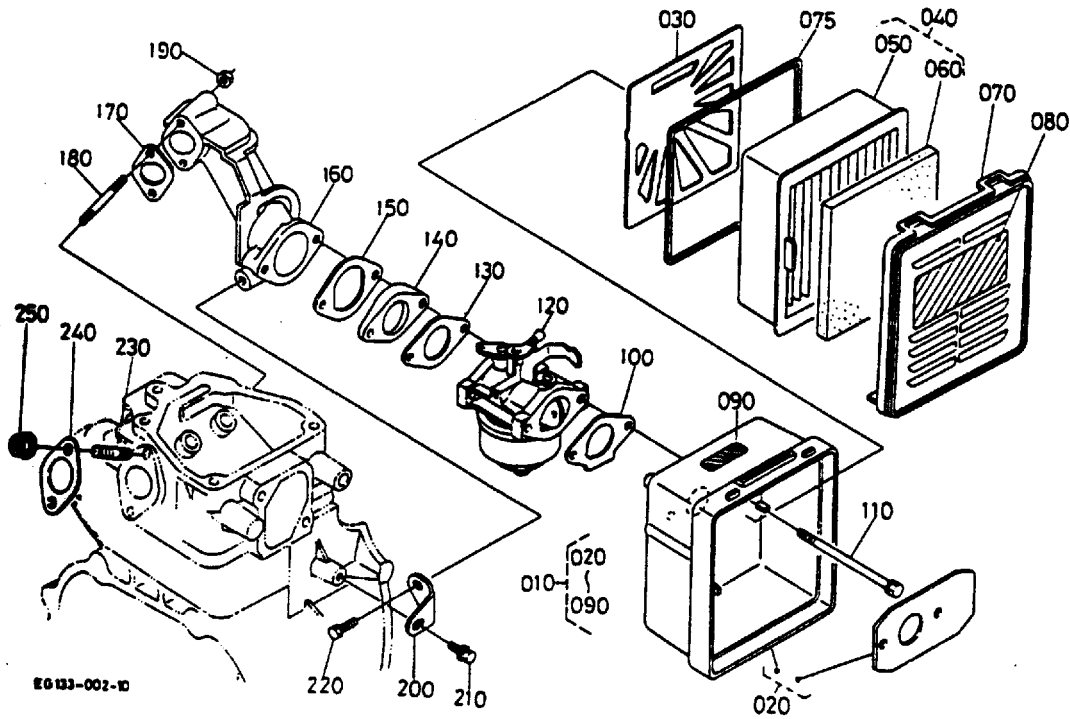
Air Cleaner (Style II) (Beginning ESN 551685 Prior to Spec C)



REF NO.	PART NO.	QTY USED	PART DESCRIPTION	REF NO.	PART NO.	QTY USED	PART DESCRIPTION
1	185±2789	1	Cleaner Assy, Air (Includes Parts Marked *)	13	185±2507	1	Carburetor
2	185±6835	1	*Body, Air Cleaner	14	185±2951	1	Gasket, Carburetor
3	185±4066	1	*Label, Choke	15	185±2907	1	Insulator
4	185±2927	1	*Plate	16	185±2908	1	Gasket, Insulator
5	185±6837	1	*Gasket, Element	17	185±2899	1	Elbow, Intake
6	185±6836	1	*Element (Includes Primary and Secondary Elements)	18	185±3697	2	Nut
7	185±5308	1	Element, Primary	19	185±2900	1	Gasket, Intake Elbow
8	185±5309	1	Element, Secondary	20	185±2884	2	Stud
9	185±6952	1	*Cover, Air Cleaner	21	185±2386	1	Bolt
10	185±2933	1	*Label, Air Cleaner	22	185±2879	1	Stay, Intake Elbow
11	185±2873	2	Bolt	23	815±0783	1	Bolt
12	185±3709	1	Gasket, Air Cleaner				

* ± Parts Included in Air Cleaner Assy

Air Cleaner (Spec C)



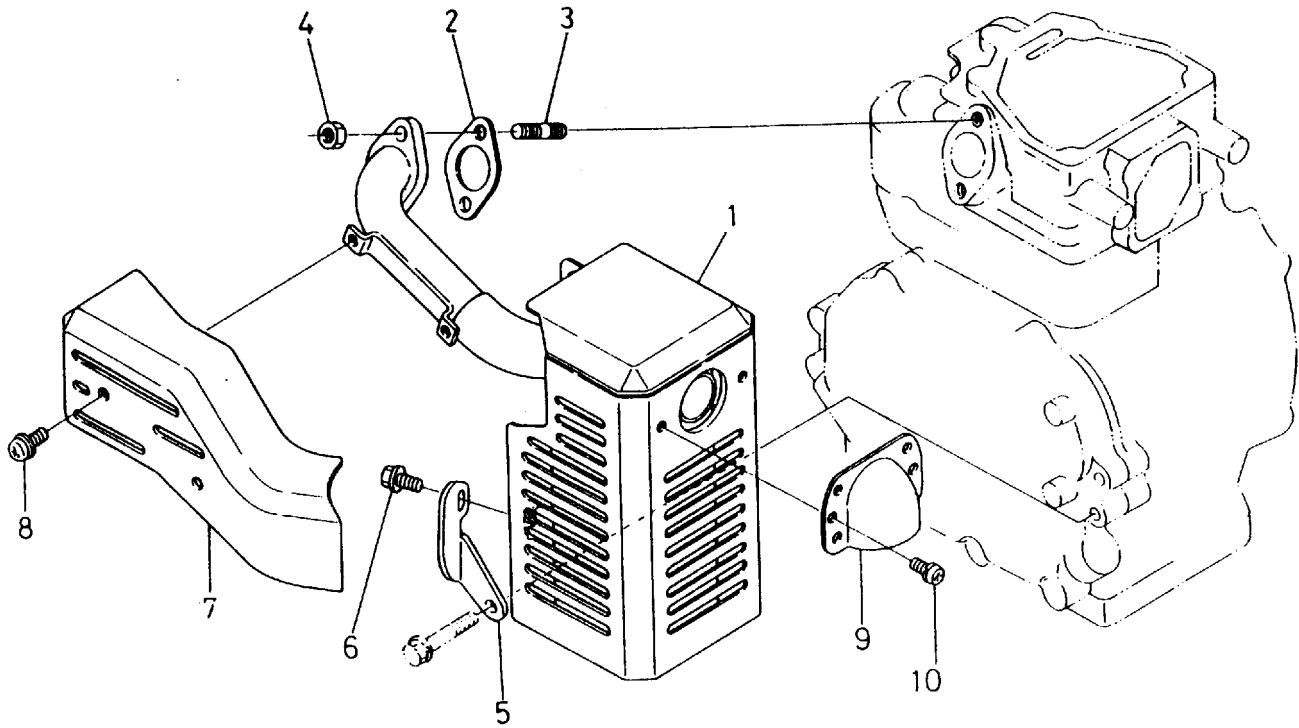
EG 133-002-10

A-CM170-EC-

REF NO.	PART NO.	QTY USED	PART DESCRIPTION	REF NO.	PART NO.	QTY USED	PART DESCRIPTION
010	185±2789	1	Cleaner Assy, Air (Includes Parts Marked *)	130	185±2951	1	Gasket, Carburetor
020	185±6835	1	*Body, Air Cleaner	140	185±2907	1	Insulator
030	185±2927	1	*Plate	150	185±7165	1	Gasket, Insulator
040	185±6836	1	*Element	160	185±2899	1	Elbow, Intake
050	185±5309	1	*Element, Secondary	170	185±2900	1	Gasket, Intake Elbow
060	185±2541	1	*Element, Primary	180	185±2884	2	Stud
070	185±6952	1	*Cover, Air Cleaner	190	185±7166	2	Nut
075	185±6837	1	*Gasket, Element	200	185±2879	1	Stay, Intake Elbow
080	185±2932	1	*Label, Air Cleaner	210	185±7194	1	Bolt
090	185±4066	1	*Label, Choke	220	815±0753	1	Bolt
100	185±7163	1	Gasket, Air Cleaner				
110	185±2398	2	Bolt				
120	185±7164	1	Carburetor				

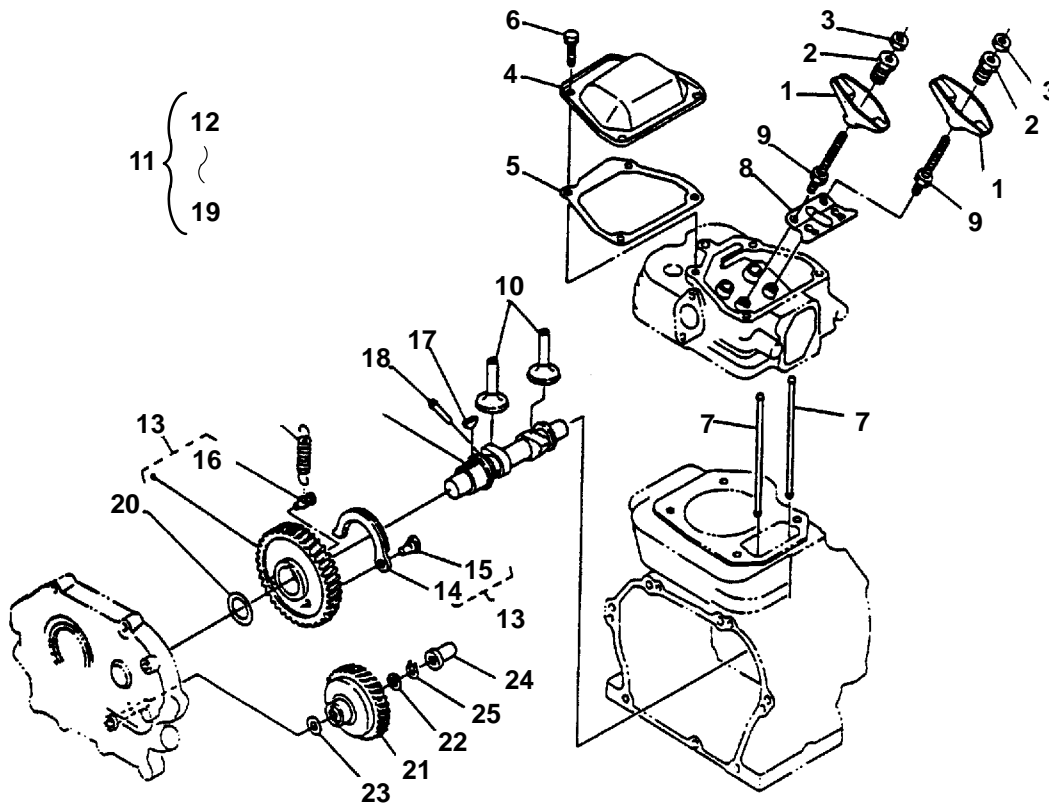
* ± Parts Included in Air Cleaner Assy

Muffler



REF NO.	PART NO.	QTY USED	PART DESCRIPTION	REF NO.	PART NO.	QTY USED	PART DESCRIPTION
1	155±2578	1	Muffler	6	185±2572	1	Bolt, Flange
2	185±2901	1	Gasket, Muffler	7	185±5215	1	Cover, Muffler Flange
3	185±4739	2	Stud	8	185±2874	2	Screw
4	185±3697	2	Nut	9	185±2867	1	Cover, Muffler Flange
5	185±2892	1	Stay, Muffler	10	185±2756	2	Screw

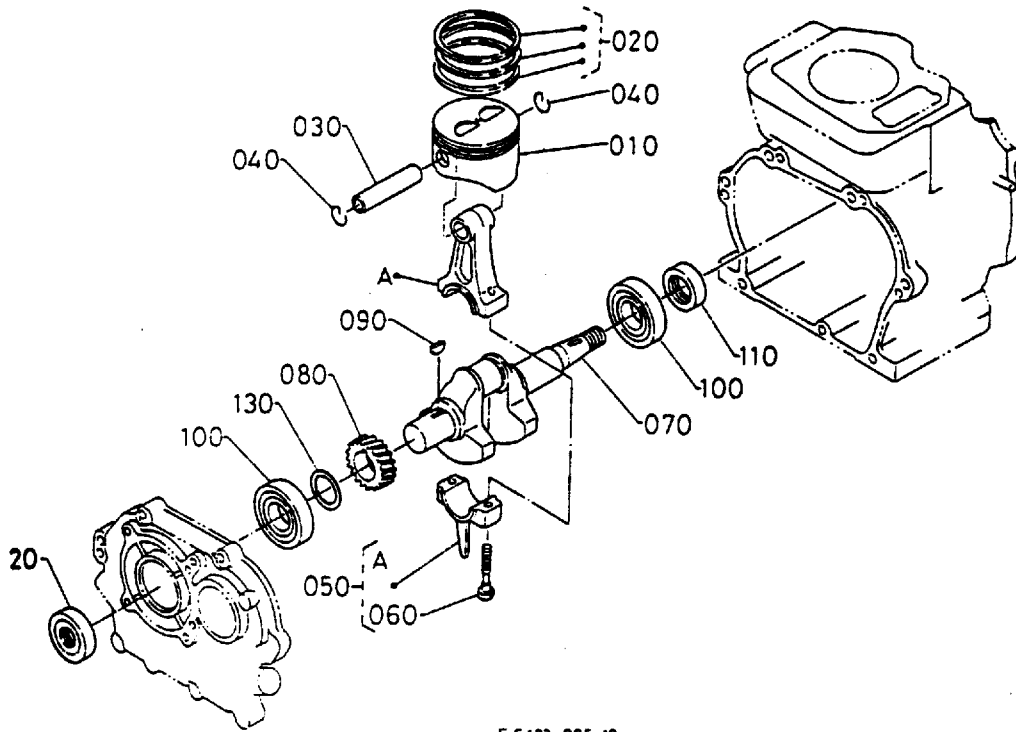
Camshaft



REF NO.	PART NO.	QTY USED	PART DESCRIPTION	REF NO.	PART NO.	QTY USED	PART DESCRIPTION
1	185±5100	2	Arm, Rocker	19	185±2755	1	*Spring, Decompression
2	185±5101	2	Nut, Adjusting	20			Shim
3	185±5102	2	Nut		185±4551	1	0.10mm
4	185±2880	1	Cover, Cylinder Head		185±3399	1	0.20mm
5	185±2522	1	Gasket, Head Cover		185±3393	1	0.25mm
6	185±7195	4	Bolt		185±3394	1	0.30mm
7	185±2903	2	Push Rod		185±3392	1	0.35mm
8	185±2904	1	Guide, Push Rod		185±3395	1	0.40mm
9	185±5105	2	Bolt		185±3396	1	0.45mm
10	185±5106	2	Tappet		185±3397	1	0.50mm
11	185±2912	1	Camshaft Assy (Includes Parts Marked *)		185±3398	1	0.55mm
12	185±2913	1	*Camshaft	21	185±2732	1	Gear, Governor
13	185±2914	1	*Gear, Camshaft	22	526±2077	1	Washer
14	185±2731	1	*Flyweight	23	526±2078	1	Washer
15	185±2740	1	*Shaft, Flyweight	24	185±3675	1	Sleeve, Governor
16	150±2305	1	*Pin, Decompression Spring	25	150±2275	1	Stopper
17	185±3389	1	*Key, Woodruff				
18	185±2911	1	*Pin, Decompression				

* ± Parts Included in Camshaft Assy.

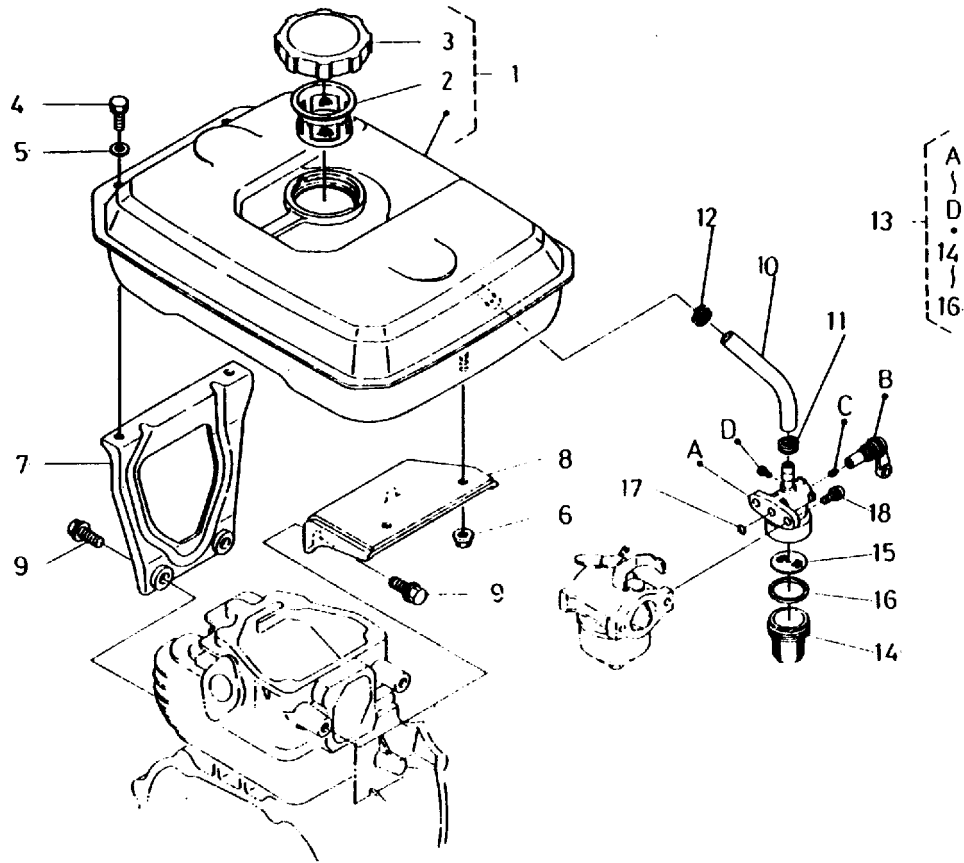
Crankshaft



E G 133-005-10

REF NO.	PART NO.	QTY USED	PART DESCRIPTION	REF NO.	PART NO.	QTY USED	PART DESCRIPTION
010	185±2534	1	Piston Standard	080	185±5116	1	Gear, Crankshaft
	185±2920	1	0.25 O.S.	090	185±3088	1	Key, Woodruff
	185±2919	1	0.50 O.S.	100	185±3094	2	Bearing, Ball
020	185±2533	1	Ring, Piston Standard	110	185±3100	1	Seal, Oil
	185±2916	1	0.25 O.S.	120	185±4513	1	Seal, Oil
	185±2915	1	0.50 O.S.	130			Shim
030	185±5111	1	Pin, Piston	185±4547	1	0.10mm	
040	185±3416	2	Cir±Clip, Internal	185±3371	1	0.20mm	
050	185±2532	1	Rod, Connecting Standard	185±3366	1	0.25mm	
	185±2905	1	0.25 U.S.	185±3367	1	0.30mm	
	185±2906	1	0.50 U.S.	185±3365	1	0.35mm	
060	185±3727	2	Bolt, Connecting Rod	185±3368	1	0.40mm	
070	185±2506	1	Crankshaft	185±3370	1	0.60mm	
				185±3369	1	0.50mm	
				185±7196	1	0.55mm	
				185±7197	1	0.60mm	

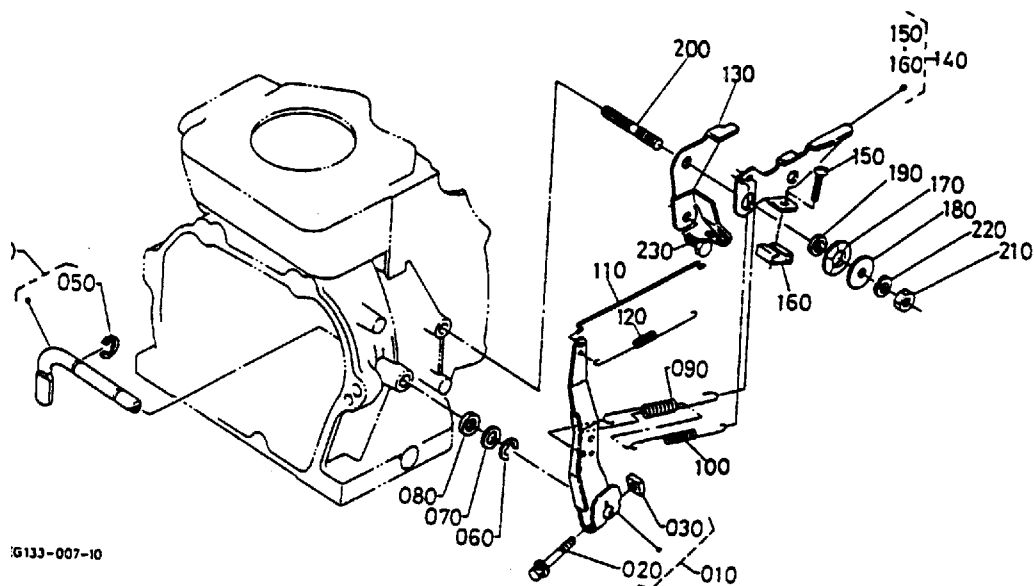
Fuel System



REF NO.	PART NO.	QTY USED	PART DESCRIPTION	REF NO.	PART NO.	QTY USED	PART DESCRIPTION
1	185±2778	1	*Tank, Fuel	14	185±2998	1	Cup
2	185±2869	1	*Filter, Fuel	15	185±2498	1	Element, Filter
3	185±3657	1	*Cap, Gas	16	185±2930	1	Gasket
4	185±2386	2	*Bolt	17	185±2885	1	O'Ring
5	185±2875	2	*Washer, Plain	18	185±3051	2	Screw, With Washer
6	185±3802	2	*Nut				
7	185±2894	1	*Bracket, Fuel Tank				
8	185±2868	1	*Bracket, Fuel Tank				
9	185±2573	4	*Bolt, Flange				
10	185±2480	1	*Tube, Fuel				
11	185±3372	1	*Clip, Fuel Pipe				
12	185±2728	1	*Clip, Pipe				
13			Filter, Fuel (Includes Cup, Element and Gasket)				
	185±2881	1	Spec A/B				
	185±7198	1	Begin Spec C				

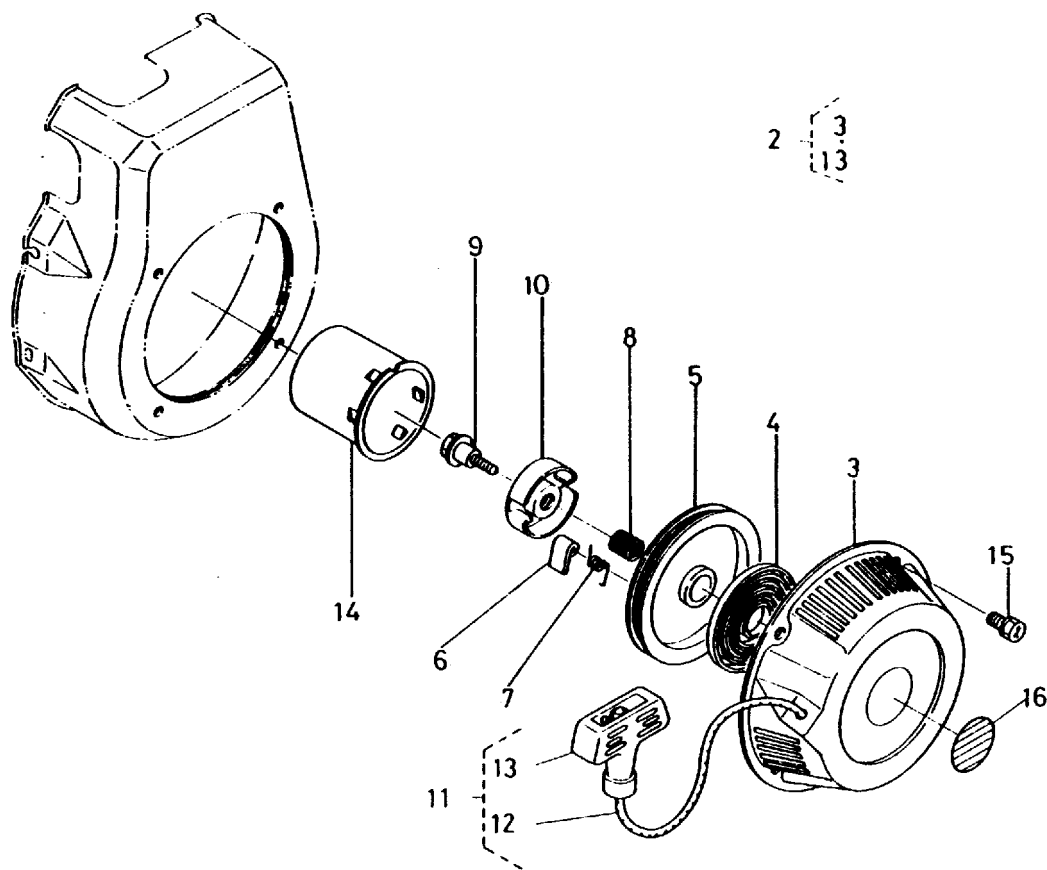
* ± Used on Specs 1 and 14000 Only. See Control Page for Specs 34879 and 38018.

Governor Lever



REF NO.	PART NO.	QTY USED	PART DESCRIPTION	REF NO.	PART NO.	QTY USED	PART DESCRIPTION
010	185±2909	1	Lever, Governor	120	185±2978	1	Spring, Rod
020	185±5147	1	Bolt	130	185±2872	1	Plate, Control
030	185±5148	1	Nut	140	185±2898	1	Lever, Control (Includes Lever, Screw and Spring)
040	185±2910	1	Shaft, Governor Lever (Includes Circlip)	150	185±2576	1	Screw, Pan Head
050	518±0576	1	Cir±Clip, External	160	185±2883	1	Spring, Lock
060	518±0576	1	Cir±Clip, External	170	185±3566	1	Washer, Spring
070	740±1006	1	Washer, Plain	180	185±4499	1	Plate, Pressure
080	150±2448	1	Gasket	190	185±4498	1	Collar
090	185±2895	1	Spring, Governor	200	150±2286	1	Stud
100	185±5221	1	Spring, Governor	210	185±2366	1	Nut
110			Rod, Governor	220	185±6957	1	Washer, Spring
	185±5222	1	Spec A/B	230	815±0753	1	Bolt
	185±7171	1	Begin Spec C				

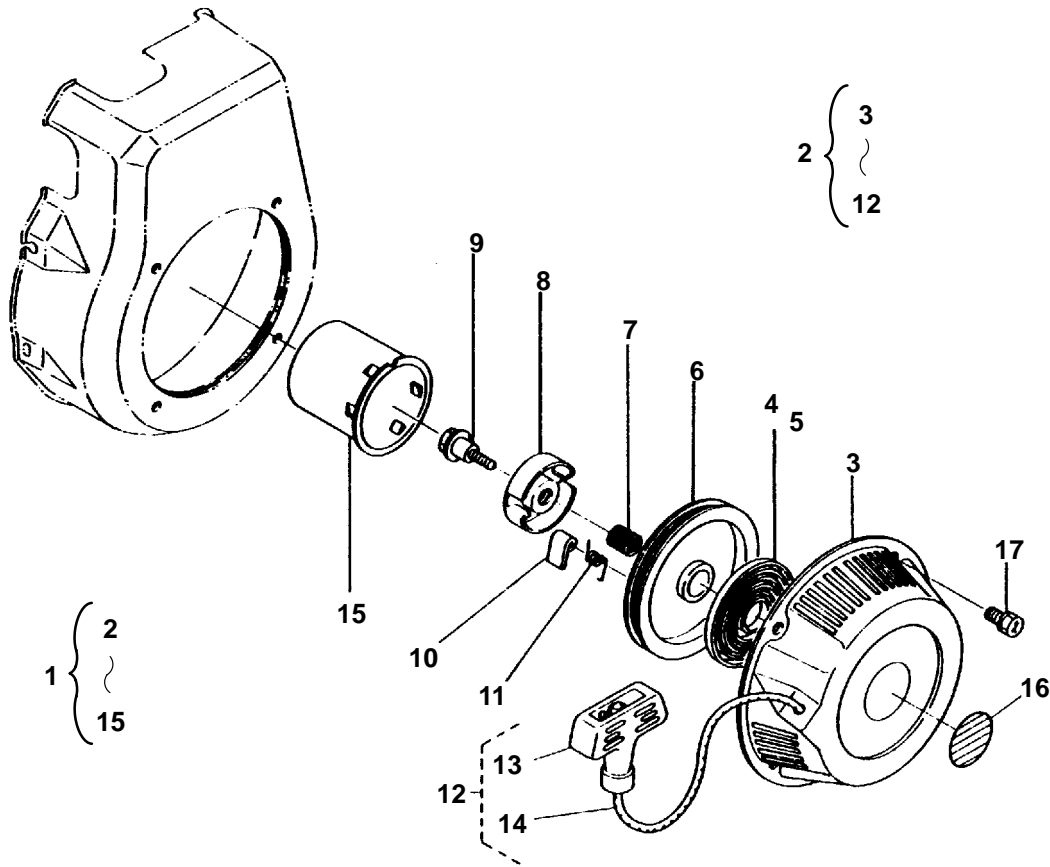
**Recoil Starter
(Style I)
(Prior to ESN 551541)**



REF NO.	PART NO.	QTY USED	PART DESCRIPTION	REF NO.	PART NO.	QTY USED	PART DESCRIPTION
1	185±2528	1	Starter, Recoil (Includes Starter Sub Assy and Start Pulley)	10	185±5254	1	*Retainer
2	185±2992	1	Starter, Recoil Sub (Includes Parts Marked *)	11	185±2993	1	*Rope, Starter (Includes Rope and Handle)
3	185±2994	1	*Case, Recoil Starter	12	185±2996	1	Rope, Starter
4	185±5247	1	*Spring, Spiral	13	192±0444	1	Handle
5	185±2995	1	*Reel	14	185±5223	1	Pulley, Start
6	185±5236	2	*Dog	15	185±3012	4	Bolt
7	185±2942	2	*Spring, Dog	16	185±4944	1	Label, Electronic
8	185±5237	1	*Spring, Brake				
9	185±5289	1	*Screw, Center				

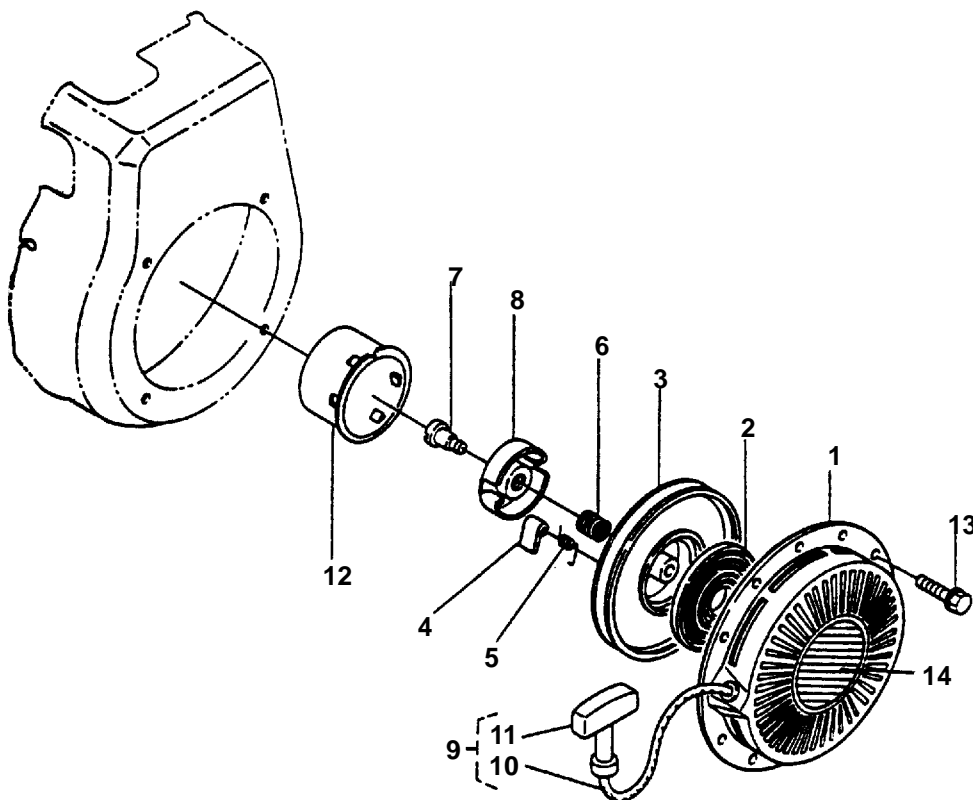
* ± Parts Included in Starter Sub Assy.

**Recoil Starter
(Style II)
(Beginning ESN 551541)**



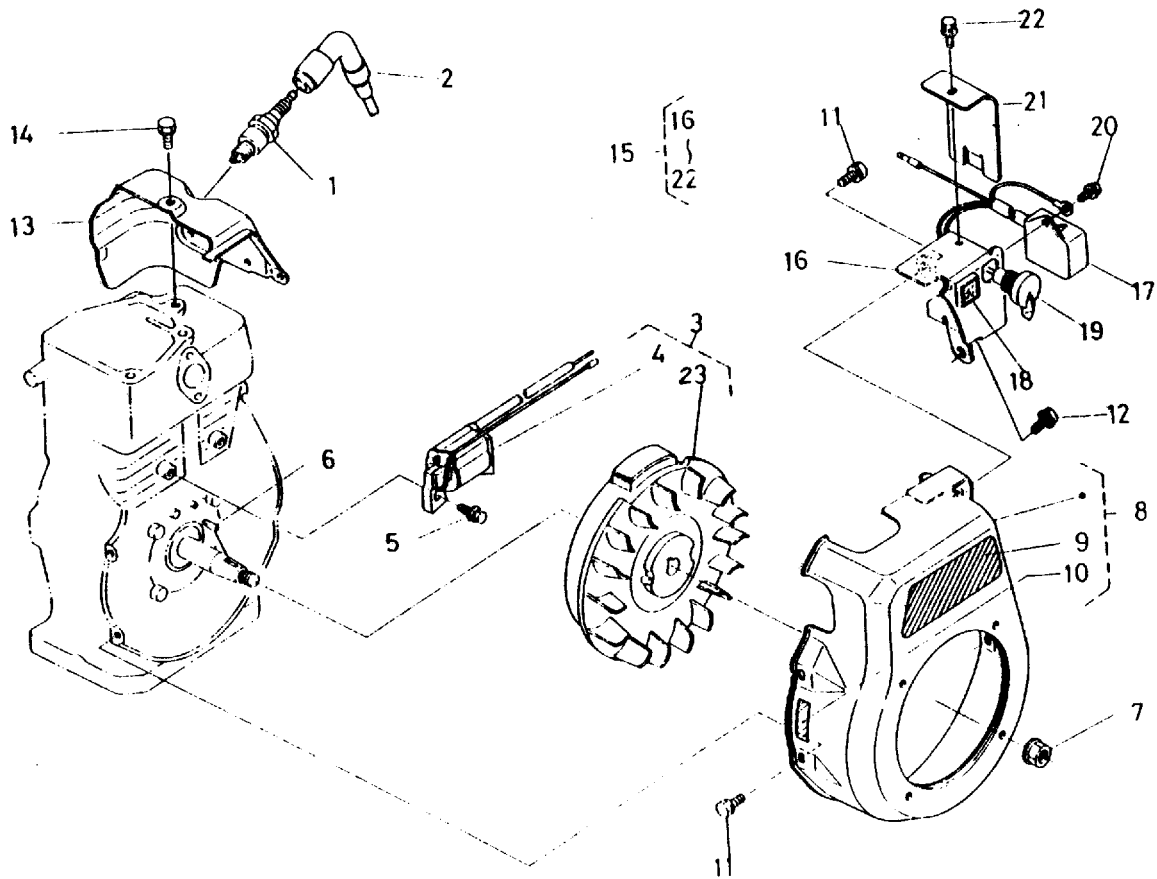
REF NO.	PART NO.	QTY USED	PART DESCRIPTION	REF NO.	PART NO.	QTY USED	PART DESCRIPTION
1	185±6378	1	Starter, Recoil	10	185±5236	2	*Dog
2	185±7200	1	*Starter, Recoil Sub	11	185±2942	2	*Spring, Dog
3	185±7201	1	*Case, Recoil Starter	12	185±2993	1	*Rope, Starter (Includes Handle and Rope)
4	185±7160	1	*Case, Spring	13	192±0444	1	Handle
5	185±7148	1	*Spring, Spiral	14	185±2996	1	Rope, Starter
6	185±7202	1	*Reel	15	185±7204	1	Pulley, Start
7	185±5237	1	*Spring, Brake	16	185±4944	1	Label, Electronic
8	185±5254	1	*Retainer	17	185±3012	4	Bolt
9	185±7203	1	*Screw, Center				

Recoil Starter (Begin Spec C)



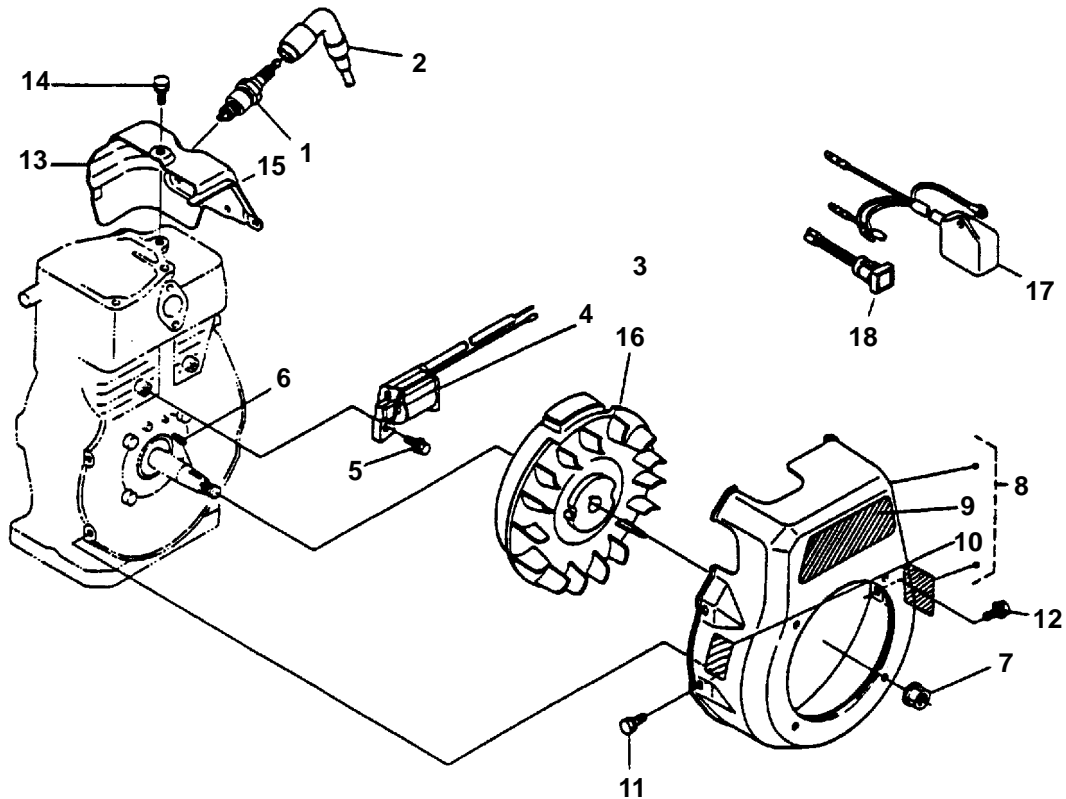
REF NO.	PART NO.	QTY USED	PART DESCRIPTION	REF NO.	PART NO.	QTY USED	PART DESCRIPTION
	185±7172	1	Starter, Recoil	8	185±7176	1	Retainer
1	185±7173	1	Case, Recoil Starter	9	185±7179	1	Rope, Starter (Includes Rope and Handle)
2	185±7177	1	Spring, Spiral	10	185±7181	1	Rope, Starter
3	185±7174	1	Reel	11	185±7182	1	Handle
4	185±7175	2	Dog	12	185±7184	1	Pulley, Start
5	185±7178	2	Spring, Dog	13	185±7185	4	Bolt
6	185±7180	1	Spring, Brake	14	185±4944	1	Label, Electronic
7	185±7183	1	Screw, Center				

Magneto (Specs 1 And 14000)



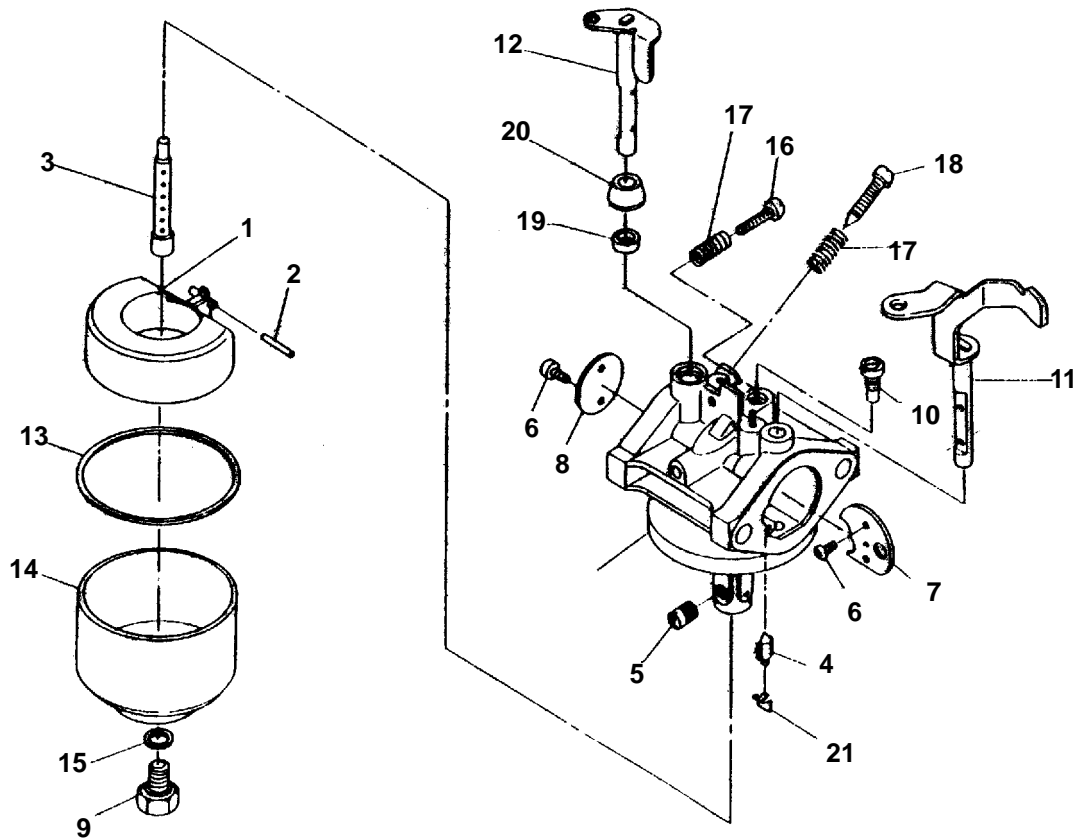
REF NO.	PART NO.	QTY USED	PART DESCRIPTION	REF NO.	PART NO.	QTY USED	PART DESCRIPTION
1	185±2527	1	Plug, Spark	13	185±5225	1	Cowling, Cylinder Head
2	167±1621	1	Cap, Spark Plug	14	185±3730	2	Bolt
3	185±2999	1	Magneto, Flywheel	15	185±5211	1	Panel, O/W
4	185±2529	1	Plate, Transistor	16	185±5212	1	Panel
5	185±4543	2	Bolt	17	185±2549	1	Watch, Oil
6	185±2759	1	Key, Woodruff	18	185±2550	1	Lamp, Led
7	185±2758	1	Nut, Flywheel	19	185±3107	1	Switch, Stop
8	185±5210	1	Cover, Fan	20	185±2390	1	Bolt
9	185±3725	1	Nameplate	21	185±5213	1	Cover, Panel
10	185±7199	1	Label, Speed	22	185±4740	1	Bolt, With Washer
11	185±3503	4	Bolt	23	185±5227	1	Flywheel
12	185±5251	1	Bolt				

Magneto (Specs 34879 And 38018)



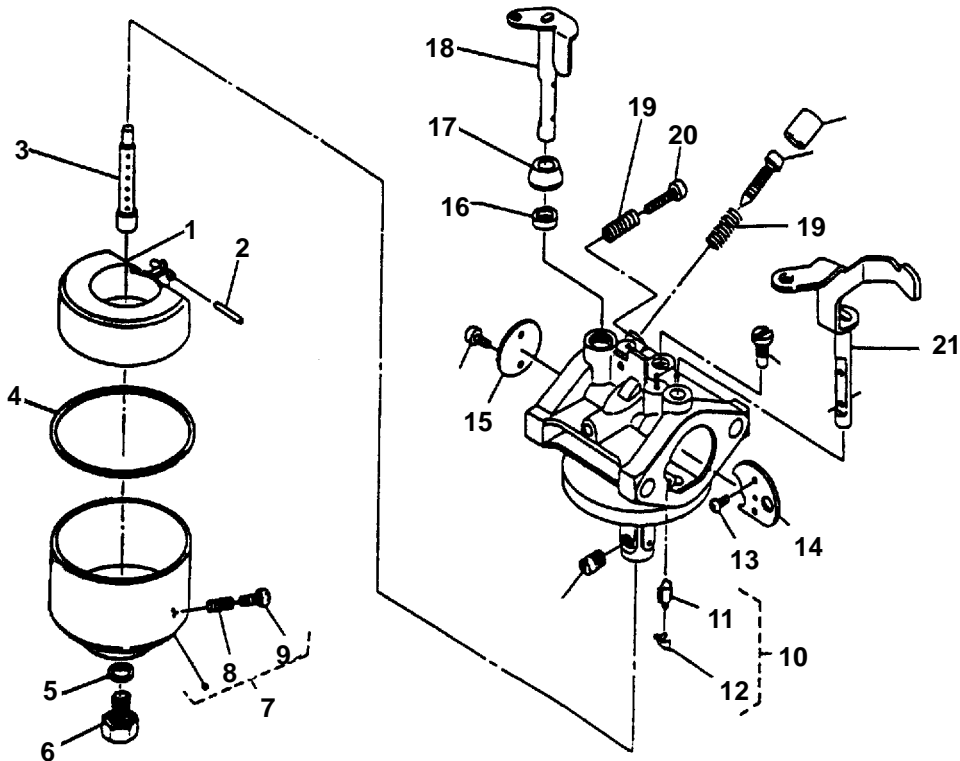
REF NO.	PART NO.	QTY USED	PART DESCRIPTION	REF NO.	PART NO.	QTY USED	PART DESCRIPTION
1	185±2527	1	Plug, Spark	9	185±3725	1	Nameplate
	185±7157	1	Spec A/B		185±5275	1	Spec A/B
			Begin Spec C				Begin Spec C
2	167±1621	1	Cap, Spark Plug	10	185±7199	1	Label, Speed
3	185±2999	1	Magneto, Flywheel	11	185±3503	3	Bolt
4	185±2529	1	Plate, Transistor	12	185±5251	1	Bolt
5	185±4543	2	Bolt	13	185±5225	1	Cowling, Cylinder Head
6	185±2759	1	Key, Woodruff	14	185±3730	2	Bolt
7			Nut, Flywheel	15	185±2976	2	Bolt, Flange
	185±2758	1	Spec A/B	16	185±5227	1	Flywheel
	185±7158	1	Begin Spec C	17	185±2549	1	Watch, Oil (Begin Spec C)
8			Cover, Fan	18	185±2550	1	Lamp, LED (Begin Spec C)
	185±2784	1	Spec A/B				
	185±7187		Begin Spec C				

Carburetor Components (Spec A/B)



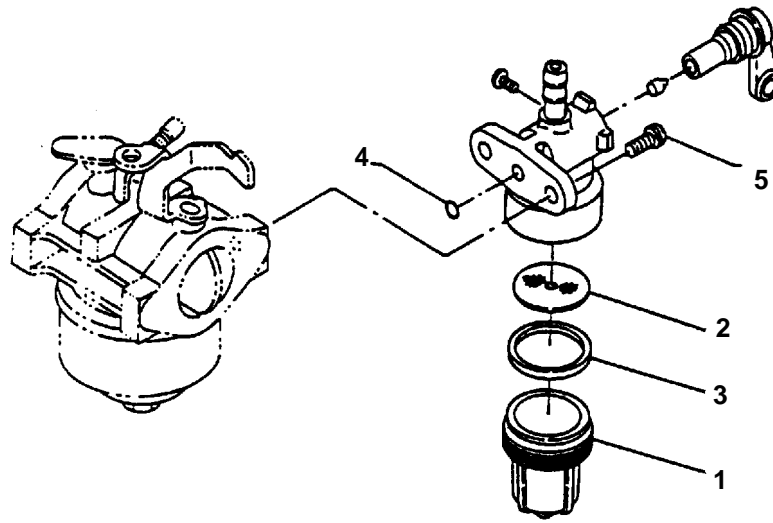
REF NO.	PART NO.	QTY USED	PART DESCRIPTION	REF NO.	PART NO.	QTY USED	PART DESCRIPTION
	185±2507	1	Carburetor Assy	10	185±5252	1	Jet, Pilot
1	185±4571	1	Float	11	185±2991	1	Shaft, Choke
2	185±2871	1	Pin	12	185±5220	1	Shaft, Throttle
3	185±5250	1	Nozzle, Main	13	185±4561	1	Gasket
4	185±5218	1	Needle	14	185±5216	1	Chamber Assy, Float
5	185±2969	1	Jet, Main	15	185±4506	1	Gasket
	185±2970	1	Standard	16	185±5169	1	Screw
	185±2970	1	Hi Altitude	17	185±3469	2	Spring
6	185±4559	4	Screw	18	185±2870	1	Adjuster
7	185±5249	1	Valve, Choke	19	185±4565	1	Seal
8	185±5224	1	Valve, Throttle	20	185±2983	1	Ring
9	185±5217	1	Bolt	21	185±5219	1	Clip

Carburetor Components (Begin Spec C)



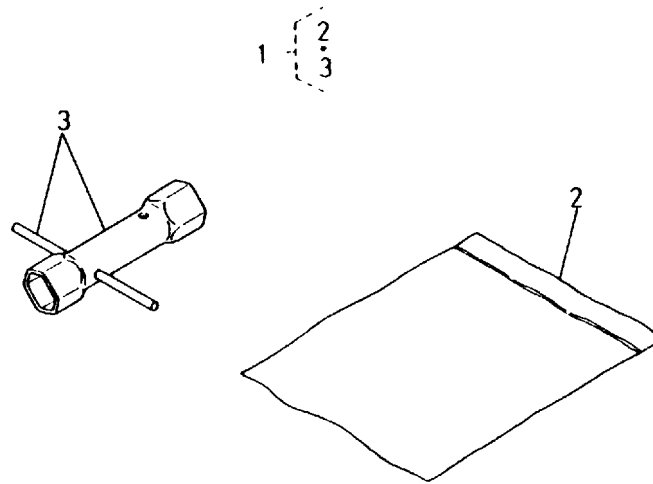
REF NO.	PART NO.	QTY USED	PART DESCRIPTION	REF NO.	PART NO.	QTY USED	PART DESCRIPTION
	185±7164	1	Carburetor Assy	11	185±5218	1	Needle
1	185±7167	1	Float	12	185±5219	1	Clip
2	185±4759	1	Pin	13	185±4559	4	Screw
3	185±5250	1	Nozzle, Main	14	185±5249	1	Valve, Choke
4	185±4561	1	Gasket	15	185±5224	1	Valve, Throttle
5	185±4506	1	Gasket	16	185±4565	1	Seal
6	185±2882	1	Bolt	17	185±2983	1	Ring
7	185±7168	1	Chamber Assy, Float (Includes Spring and Screw)	18	185±5220	1	Shaft, Throttle
8	185±3467	1	Spring	19	185±3469	2	Spring
9	185±4564	1	Screw, Drain	20	185±5169	1	Screw
10	185±4809	1	Valve Assy, Needle (Includes Needle and Clip)	21	185±2991	1	Shaft, Choke

Fuel Filter



REF NO.	PART NO.	QTY USED	PART DESCRIPTION	REF NO.	PART NO.	QTY USED	PART DESCRIPTION
	185±7198	1	Filter Assy, Fuel	3	185±2930	1	Gasket
1	185±2998	1	Cup	4	185±2885	1	O'Ring
2	185±2498	1	Element, Filter	5	185±3051	2	Screw, W/Washer

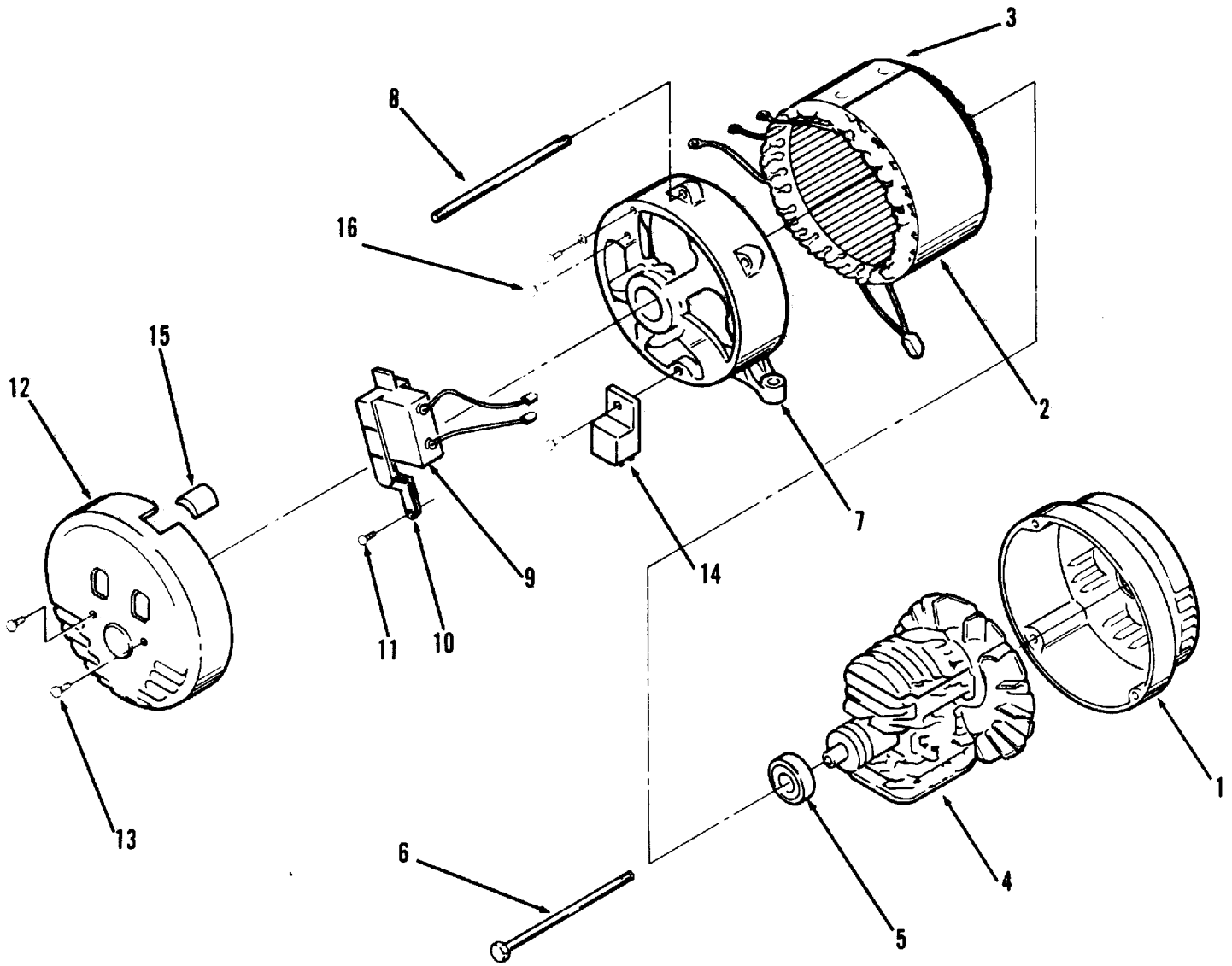
Tools



REF NO.	PART NO.	QTY USED	PART DESCRIPTION
1	185±2955	1	Bag Assembly, Tools
2	185±2754	1	Bag, Tools
3	185±2763	1	Box, Plug

* Spec 34879 and 38018 Units Only

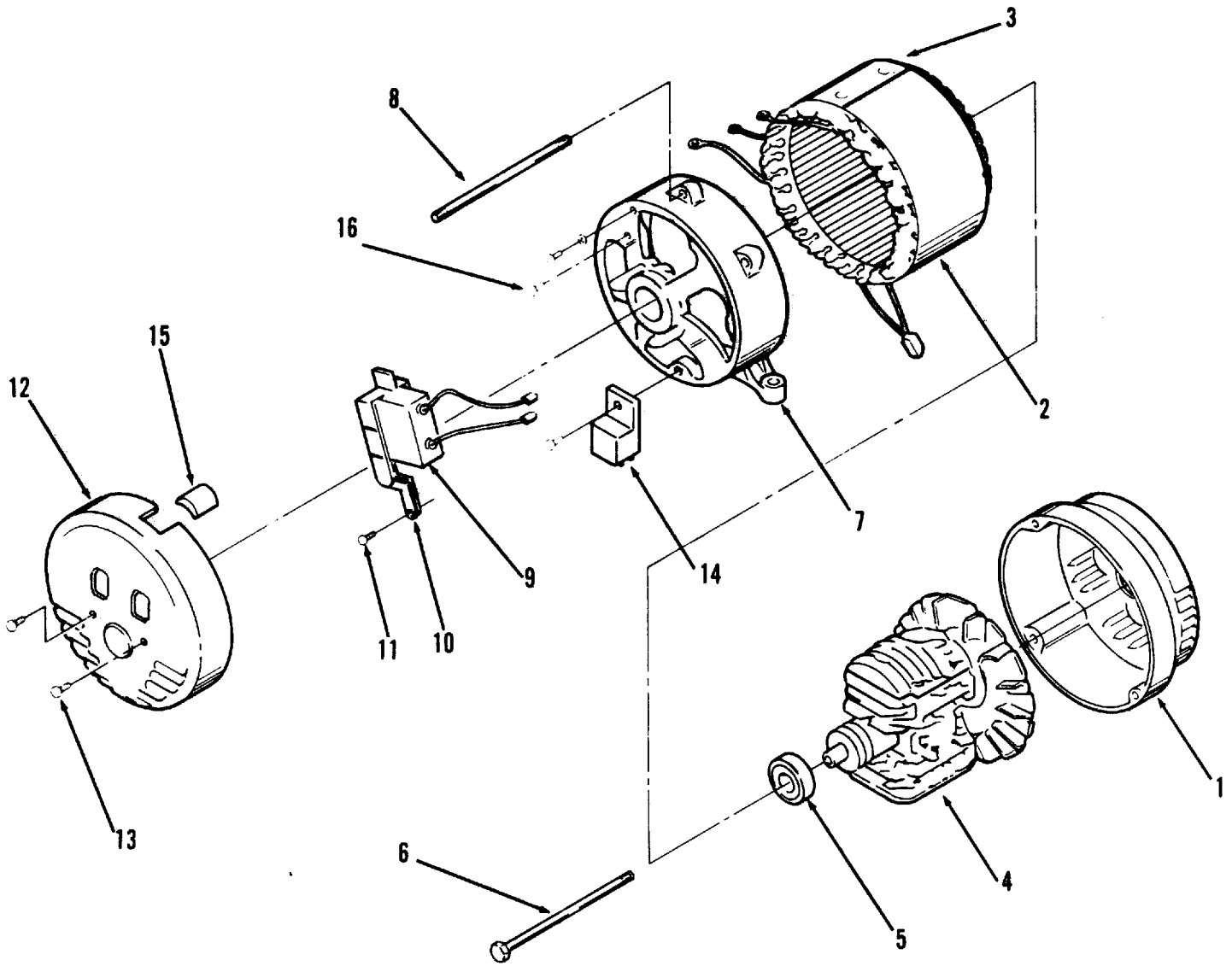
**Generator
60Hz
1.7 KW
Spec 1 and 14000**



REF NO.	PART NO.	QTY USED	PART DESCRIPTION	REF NO.	PART NO.	QTY USED	PART DESCRIPTION
1	249±5068		Replacement Generator	11	249±0720	2	Screw
	185±4994	1	Adapter Assy Spec 1 Prior to 7/90	12	249±0708	1	Cover Assy, End
	249±0800	1	Spec 1 Begin 7/90 and Spec 14000	13	249±0693	2	Bolt, End Cover
2	249±5068*	1	Stator	14	185±5005	1	Diode
3	249±0700	1	Cover, Stator	15			Grommet
4	249±5068*	1	Rotor		249±0695	1	Spec 1 Prior to 7/90
5	249±0688	1	Bearing, Ball		249±0760	1	Spec 1 Begin 7/90 and Spec 14000
6	249±0704	1	Bolt, Mount ± Rotor	16	249±0724	1	Screw, Earth
7	185±5000	1	Endbell				
8	249±0706	4	Bolt, Stator Mount				
9	249±0690	1	Capacitor				
10	249±0691	1	Holder, Capacitor				

* ± Stator/Rotor Not Available, Must Order Replacement Generator.

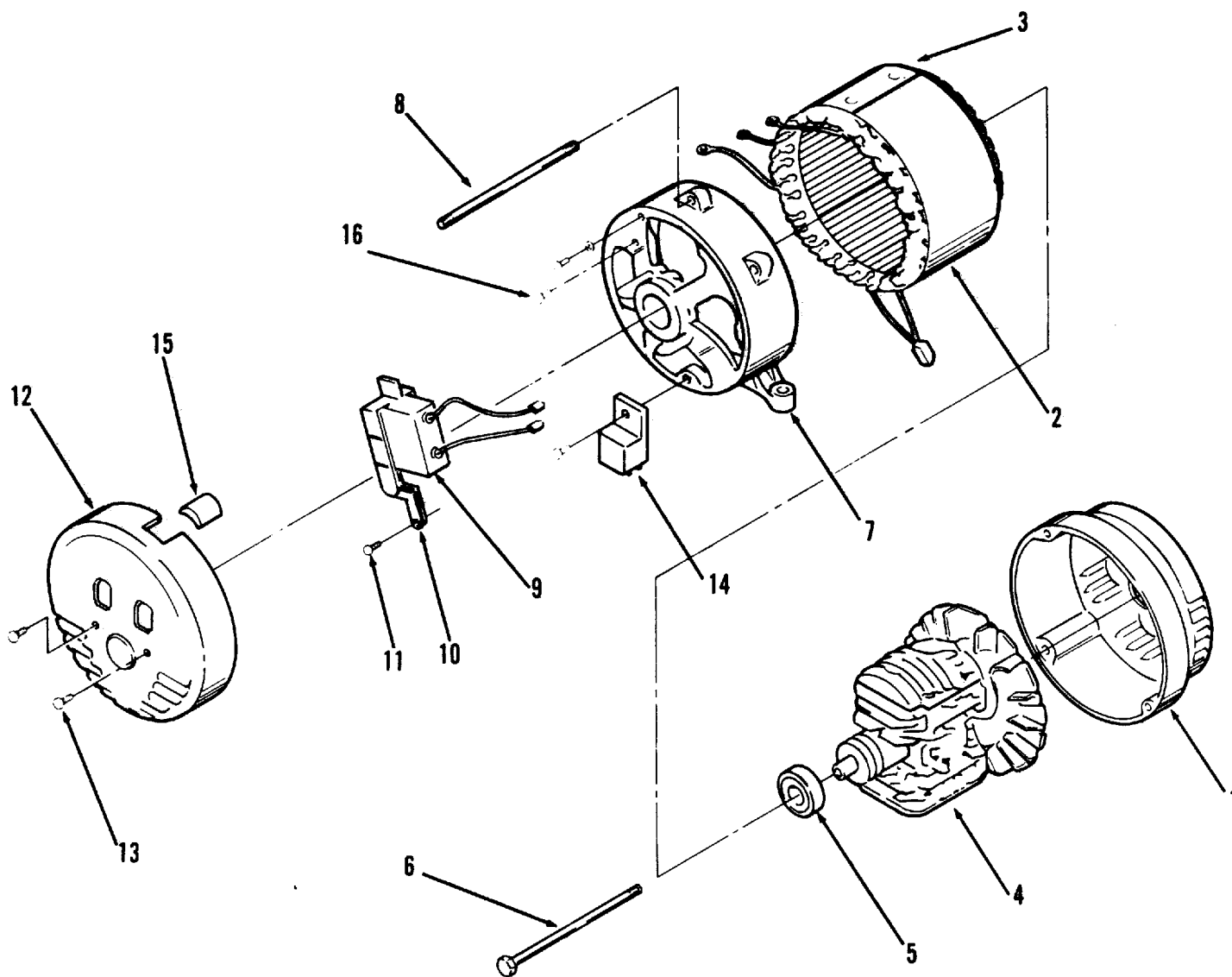
**Generator
60Hz
2.5 KW
Spec 1 and 14000**



REF NO.	PART NO.	QTY USED	PART DESCRIPTION	REF NO.	PART NO.	QTY USED	PART DESCRIPTION
1	249±5069		Replacement Generator	11	249±0720	2	Screw
	185±4994	1	Adapter Assy Spec 1 Prior to 7/90	12	249±0709	1	Cover Assy, End
	249±0800	1	Spec 1 Begin 7/90 and Spec 14000	13	249±0693	2	Bolt, End Cover
2	249±5069*	1	Stator	14	185±5005	1	Diode
3	249±0701	1	Cover, Stator	15			Grommet
4	249±5069*	1	Rotor		249±0695	1	Spec 1 Prior to 7/90
5	249±0688	1	Bearing, Ball		249±0760	1	Spec 1 Begin 7/90 and Spec 14000
6	249±0705	1	Bolt, Rotor Mount	16	249±0724	1	Screw, Earth
7	185±5000	1	Endbell				
8	249±0707	4	Bolt, Stator Mount				
9	249±0690	1	Capacitor				
10	249±0691	1	Holder, Capacitor				

* ± Stator/Rotor Not Available, Must Order Replacement Generator.

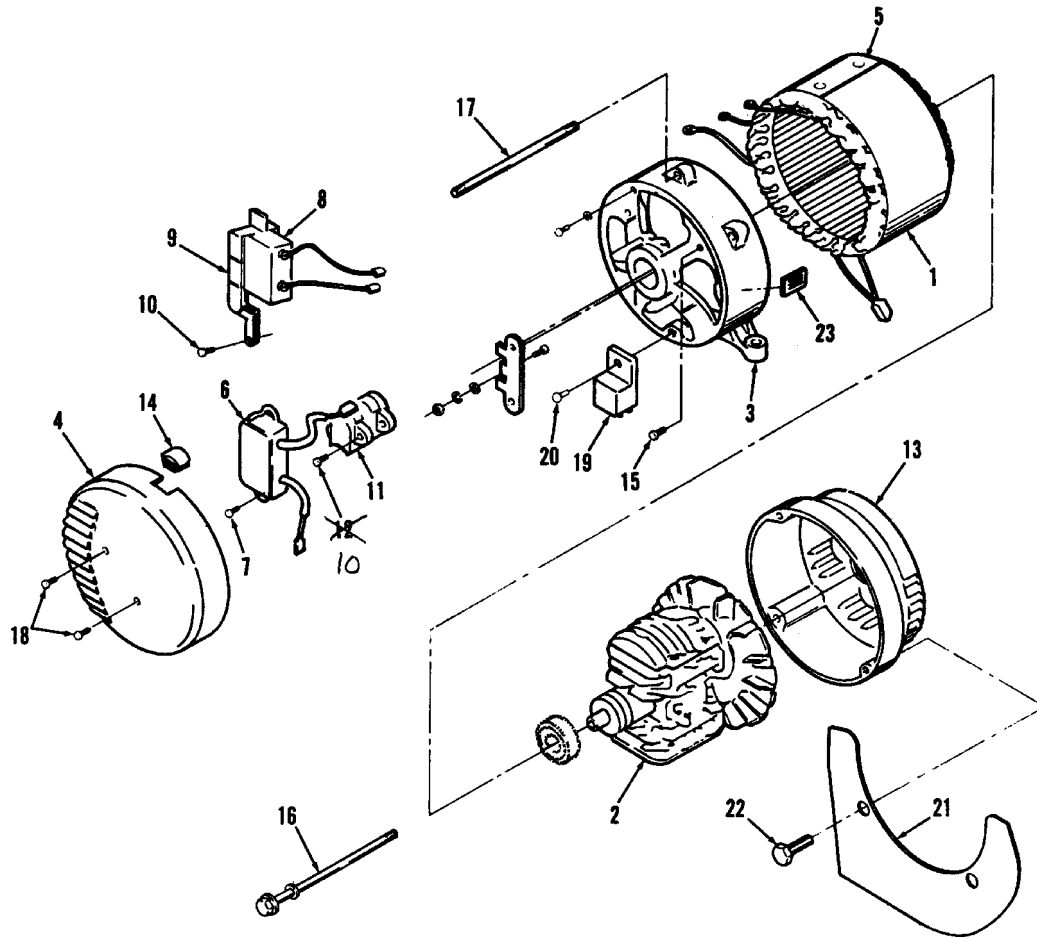
**Generator
60Hz
2.5 KW
Spec 34879 and 38018**



REF NO.	PART NO.	QTY USED	PART DESCRIPTION	REF NO.	PART NO.	QTY USED	PART DESCRIPTION
1	249±5070		Replacement Generator	10	249±0691	1	Holder, Capacitor
	185±4994	1	Adapter Assy	11	249±0720	2	Screw
	249±0800	1	Spec 34879A	12	249±0710	1	Cover, End
2	249±5070*	1	Stator	13	249±0759	2	Bolt, End Cover
3	249±0701	1	Cover, Stator	14	185±5005	1	Diode
4	249±5070*	1	Rotor	15	249±0724	1	Screw, Earth
5	249±0688	1	Bearing, Ball	16	249±0695	1	Grommet
6	249±0705	1	Bolt, Rotor Mount				
7	185±5000	1	Endbell				
8	249±0707	4	Bolt, Stator Mount				
9	249±0690	1	Capacitor				

* ± Stator/Rotor Not Available, Must Order Replacement Generator.

**Generator
50Hz
1.4/2.0 KW**



REF NO.	PART NO.	QTY USED	PART DESCRIPTION	REF NO.	PART NO.	QTY USED	PART DESCRIPTION
			Generator, Replacement	12	249±0720	1	Screw, Brush Holder (M5 x 12mm) (Spec B)
	249±0196	1	Spec A	13	185±4994	1	Adapter
	249±5075	1	Spec B	14	249±0695	1	Bushing, Rubber
1			Stator	15	249±0724	1	Screw, Ground (M5 x 12mm)
	249±0196*	1	Spec A	16	249±0705	1	Bolt, Rotor Mount (5/16 x 24 unf)
	249±5075*	1	Spec B	17	249±0707	4	Bolt, Stator Mount (M6 x 125mm)
2			Rotor	18	249±0759	2	Bolt, End Cover (M5 x 10mm)
	249±0196*	1	Spec A	19	185±5005	1	Diode Assy, DC
	249±5075*	1	Spec B	20	249±0720	1	Screw, DC Diode (M5 x 12mm)
3	185±5000	1	Endbell	21	249±0761	1	Plate
4	249±0710	1	Cover, End	22	249±0772	2	Screw, Plate (M5 x 8mm)
5	249±0701	1	Cover, Stator	23	249±0773	1	Plate, Name
6	249±0770	1	Regulator, Automatic Voltage (Used on Spec B Only)	24	249±0762	1	Fastener (Not Illustrated)
7	249±0714	3	Screw, AVR Mount (M5 x 14mm) (Spec B)				
8	249±0690	1	Capacitor (Used on Spec A Only)				
9	249±0671	1	Holder, Capacitor (Spec A)				
10	249±0720	2	Screw, Capacitor Holder (M5 x 12mm) (Spec A)				
11	249±0771	1	Holder Assy, Brush (Used on Spec B Only)				

* ± Stator/Rotor Not Available, Must Order Replacement Generator.

**Control
60Hz
(Spec 1, 14000)**

REF NO.	PART NO.	QTY USED	PART DESCRIPTION	REF NO.	PART NO.	QTY USED	PART DESCRIPTION
	327±0890	1	Plug, DC (12 Volt) (1.7, Spec 1 Only)		327±0833	4	Mount, Vibration
	327±0841	2	Ty±Rap Breaker, Circuit (250V) Spec 1		327±0880	4	Washer, Flat (5/16 x 1±1/2°)
	320±0540	1	1.7KW (15A)		327±0877	9	Nut, Zinc Keps (5/16±18)
	320±0541	1	2.5KW (20A)		327±0836	4	Screw, Hex Head Cap (5/16±24 x 3/4°)
	327±0540	1	Spec 14000 (15A)		327±0882	4	Washer, Split Lock (5/16°)
	327±0847	2	Screw, Pan Head Phillips (#8±32 x 1/2°)		323±1106	1	Receptacle, Duplex Spec 1 (120V, 20A)
	327±0850	2	Nut, Zinc Keps (#8±32)		327±1049	1	(Mates with 323±0867 Plug) Spec 14000 (125V, 15A)
	327±0843	1	Lug, Ground		327±0837	1	Cable, DC Battery
					327±0838	1	Clip, Red Battery (1.7, Spec 1 Only)
					327±0839	1	Clip, Black Battery (1.7, Spec 1 Only)
	327±0945	1	Rollcage				
	337±2462	1	Strap, Ground (7°)				
	327±0887	1	Screw, Hex Head Cap (5/16±18 x 3/4°)				

**Control
60Hz
(Spec 34879, 38018)**

REF NO.	PART NO.	QTY USED	PART DESCRIPTION	REF NO.	PART NO.	QTY USED	PART DESCRIPTION
			Box Assy, Control (Includes Parts Marked *)	327±0956		1	*Connector, 6P P25
327±0977		1	Spec 34879	327±0894		1	*Connector 12VDC/Solenoid
327±1088		1	Spec 38018				
327±1008		1	*Back, Control Box				
			*Panel, Front	327±0948		1	Rollcage Assy
327±0954		1	Spec A	327±0923		4	Bolt, U ^o
327±1027		1	Spec B	159±1234		1	Tank, Fuel ± 5 Gallon
			*Receptacle, GFI (125V) (Begin Spec B)	159±1442		1	Valve, Shut Off (With Grommet) Cap, Gas
327±0921		1	20A (Spec 34879)	415±0634		1	With Gauge
327±1048			15A (Spec 38018)	327±1208		1	Top Vent
			*Receptacle, Duplex	327±0859		1	Line, Fuel (37 ^o) (1/4ID x 1/2 ^o)
323±1106		1	120V 20A (Spec 34879)	327±0860		2	Clip, Fuel Line
327±1049		1	125V 15A (Spec 38018)	327±0957		4	Screw, Hex Head Cap (1/4±20 x 1±1/2 ^o)
327±0858		1	*Receptacle, 12 VDC				
320±0541		1	*Breaker, Circuit (20A)	327±1020		6	Retainer Assy
327±0883		1	*Breaker, Circuit (15A)				Shield Assy, Gas Tank
327±0856		1	*Switch, On/Off	327±0929		1	Spec B
327±0857		1	*Voltmeter, 0±300 VAC	327±1010		1	Spec C
327±0901		2	*Screw, Pan Head Phillips (M3 x 8mm)				Shield Assy, Heat
			*Washer, Lock (M3)	327±0935		1	Spec B
327±0902		2	*Lug, Ground	327±1009		1	Spec C
327±0843		1	*Screw, Cad Finish ± Grade 5 (#10±24 x 1 ^o)	327±0861		2	Nut, Keps (1/4±20)
327±0846		1	*Nut, Zinc Hex (#10±24)	327±0862		4	Washer, Flat (1/4 ^o)
			*Washer, Split Lock (#10)	337±2462		1	Strap, Ground (7 ^o)
327±0911		2	*Screw, Phillips Machine (#8±32 x 1/2 ^o)	327±0887		2	Screw, Hex Head Cap (5/16±18 x 3/4 ^o)
327±0912		2	*Nut, Hex (#8±32)				Mount, Vibration
327±0847		18	*Bushing, Snap (.75 x 35/64)	327±0833		4	Washer, Flat (5/16 x 1±1/2 ^o)
			*Clamps, Cable (5/16ID)	327±0880		4	Nut, Hex (5/16±18)
327±0850		8	*Clamp, Cable (3/8 ^o)	327±0877		9	Screw, Hex Head Cap (5/16±24 x 3/4 ^o)
327±0851		2	*Watch, Low Oil	327±0836		4	Screw, Socket Head (3/8±16 x 1±1/8 ^o)
327±0852		1	*Lamp, Low Oil				Washer, Split Lock (3/8 ^o)
327±0893		1	*Screw, Pan Head Phillips (M5 x .08 x 30mm)	327±0879		4	Screw, Hex Head (5/16 x 24 x 1)
185±2549		1	*Nut, Hex (M5)	327±0905		4	Cable, Battery Charging (12 VDC)
185±2550		1	*Connector	327±0837		1	Tie, Cable
327±0853		1	Spec A/B				
327±0854		3	Begin Spec C	327±0841		2	
327±0956		3	*Terminal (For Connector)				
327±0894		3					
327±0895		6					

* ± Parts Included in Control Box Assy.

Control 50Hz (Spec 1)

REF NO.	PART NO.	QTY USED	PART DESCRIPTION	REF NO.	PART NO.	QTY USED	PART DESCRIPTION
	300±3830	1	Back, Control Box			2	Screw, Black Zinc Phillips (M3 x 20mm)
	300±3814	1	Base, Control Panel				Nut (M3)
	300±3818	1	Panel, Control Bracket			2	Receptacle, Ind 220
	327±0858	1	Receptacle, 12VDC	323±1518		1	Receptacle, Ind 110
	327±0901	2	Screw (M3 x 8mm)	323±1521		4	Screw, Black Zinc Phillips (M4 x 20mm)
	327±0902	2	Washer, Lock (M3)			4	Nut (M4)
	320±0540	1	Breaker, Circuit (250V, 15A)			1	Breaker, Circuit (10A)
	327±0843	1	Lug, Ground			2	Breaker, Circuit (15A)
	327±0846	1	Screw, Phillips (#10±24 x 1 ⁹)	320±0540		3	Plugs, Hole (Breaker)
	327±0911	2	Nut (#10±24)	517±0297			1G + 1B Option
	327±0912	2	Washer, Lock (#10)			1	Panel, European
	327±0847	13	Screw, Black Zinc Phillips (#8±32 x 1/2 ⁹)	300±3827		6	Screw, Black Zinc Phillips (#8±32 x 1/2 ⁹)
	327±0849	13	Washer, Black Zinc Lock (#8±32)	327±0847		6	Washer, Black Zinc Lock (#8±32)
	332±1553	4	Clamp, Insulated Loop	327±0849		6	Washer, Black Zinc Lock (#8±32)
	327±0881	4	Screw, Hex Head Cap (1/4±20 x 1 ⁹)			1	Cover, UK
		4	Washer, EIT Lock (1/4)	300±3833±02		2	Screw, Black Zinc Phillips (#8±32 x 1/2 ⁹)
			Blank Option	327±0847		2	Nut (#8±32)
	300±3829	1	Panel, Blank	327±0850		1	Receptacle, Ger
	327±0847	6	Screw, Black Zinc Phillips (8±32 x 1/2 ⁹)	323±1516		4	Screw, Black Zinc Phillips (M3 x 20mm)
	327±0849	6	Washer, Black Zinc Lock (#8±32)			4	Nut (M3)
	517±0297	6	Plugs, Hole (Breaker)	323±1518		1	Receptacle, Ind 220
			1U + 2Y Option			4	Screw, Black Zinc Phillips (M4 x 20mm)
	300±3826	1	Panel, UK			4	Nut (M4)
	327±0847	6	Screw, Black Zinc Phillips (#8±32 x 1/2 ⁹)	320±0540		2	Breaker, Circuit (15A)
	327±0849	6	Washer, Black Zinc Lock (#8±32)	517±0297		4	Plugs, Breaker Hole Plug
	300±3833±03	1	Cover, Ind	323±1519	±		Use With 323±1518
	327±0847	2	Screw, Black Zinc Phillips (#8±32 x 1/2 ⁹)	323±1515	±		Use With 323±1513
	327±0850	2	Nut (#8±32)	323±1522	±		Use With 323±1521
	323±1513	1	Receptacle, UK Panel	323±1520	±		Use With 323±1516
	323±1514	1	Cover, UK Panel				
		2	Screw, Black Zinc Phillips (M3 x 20mm)	403±3061		1	Rollcage
		2	Nut (M3)	337±2462		1	Strap, Ground
	323±1521	2	Receptacle	327±0887		1	Screw, Hex Head (4/16±18 x 3/4 ⁹)
		8	Screw, Black Zinc Phillips (M4 x 20mm)	327±0877		1	Nut, Chrome (5/16±18)
		8	Nut (M4)	403±3249		1	Channel, Engine Support
		2	Breaker, Circuit (10A)			4	Bumper (with Stud) (50 Duro)
	320±0540	2	Breaker, Circuit (15A)	327±0880		2	Washer, Chrome (5/16 x 1±1/2 ⁹)
	517±0297	2	Plugs, Hole (Breaker)	327±0877		8	Nut, Chrome (5/16±18)
			1U + 1Y + 1B Option	327±0837		1	Cable, Battery
	300±3826	1	Panel, UK	327±0838		1	Clip, Red Battery
	327±0847	6	Screw, Black Zinc Phillips (8±32 x 1/2 ⁹)	327±0839		1	Clip, Black Battery
	327±0849	6	Washer, Black Zinc Lock (#8±32)	327±0890		1	Plug, 12VDC
						4	Screw, Hex Head (5/16±24 x 1 ⁹)
	323±1513	1	Receptacle, UK			4	Washer, Lock (5/16)
	323±1514	1	Cover, UK				

* ± Parts Included in Control Box Assy.

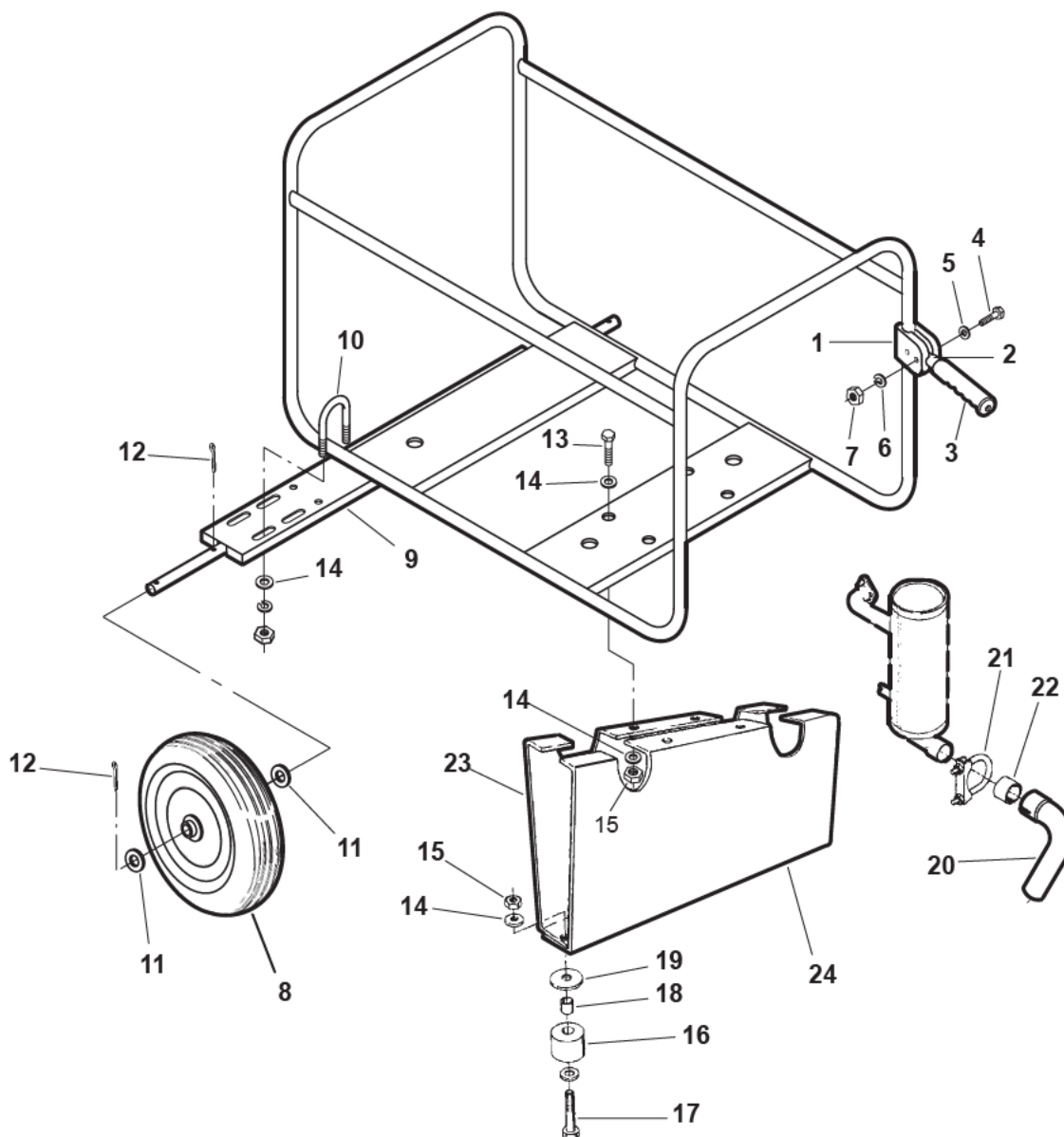
**Control
50Hz
(Spec 34879)**

REF NO.	PART NO.	QTY USED	PART DESCRIPTION	REF NO.	PART NO.	QTY USED	PART DESCRIPTION
	300±3742	1	Back, Control Box		320±0540	2	Breaker, Circuit (15A)
	300±3816	1	Base, Control Panel		517±0297	2	Plugs, Hole (Breaker)
	300±3818	1	Panel, Control Bracket				1U + 1Y + 1B Option
	327±0871	1	Switch, Start/Stop (DPST)		300±3826	1	Panel, UK
	301±6257	1	Plug, Switch Blank		327±0847	6	Screw, Black Zinc Phillips (8±32 x 1/2°)
	327±0857	1	Voltmeter (0±300VAC)		327±0849	6	Washer, Black Zinc Lock (#8±32)
	327±0858	1	Receptacle (12VDC)		323±1513	1	Receptacle, UK
	327±0901	2	Screw (M3 x 8mm)		323±1514	1	Cover, UK
	327±0902	2	Washer, Lock (M3)		323±1518	1	Receptacle, Ind 220
	320±0540	1	Breaker, Circuit (250V, 15A)		323±1521	1	Receptacle, Ind 110
	327±0843	1	Lug, Ground			4	Screw, Black Zinc Phillips (M4 x 20mm)
	327±0846	1	Screw, Phillips (#10±24 x 1°)			4	Nut (M4)
	327±0911	2	Nut (#10±24)			1	Breaker, Circuit (10A)
	327±0912	2	Washer, Lock (#10)			2	Breaker, Circuit (15A)
	327±0847	18	Screw, Black Zinc Phillips (#8±32 x 1/2°)			3	Plugs, Hole (Breaker)
	327±0849	10	Washer, Lock (#8±32)		320±0540	2	Breaker, Circuit (15A)
	327±0850	6	Nut (#8±32)		517±0297	3	Plugs, Hole (Breaker)
	332±1553	4	Clamp, Loop (Insulated)				1G + 1B Option
	327±0881	4	Screw, Hex Head (1/4±20 x 1°)		327±0847	6	Screw, Black Zinc Phillips (#8±32 x 1/2°)
		4	Washer, Lock (EIT) (1/4)		327±0849	6	Washer, Black Zinc Lock (#8±32)
	327±0851	2	Bushing			6	Washer, Black Zinc Lock (#8±32)
	327±0892	1	Clamp, Cable (.25 ID)		300±3833±02	1	Cover, UK
	327±0893	1	Clamp, Cable (.375 ID)		327±0847	2	Screw, Black Zinc Phillips (#8±32 x 1/2°)
	327±0853	2	Screw, Phillips (M5 x 30mm)		327±0850	2	Nut (#8±32)
	327±0854	2	Nut (M5)		323±1516	1	Receptacle, Ger
	327±0855	2	Washer, Extruded (M5)			4	Screw, Black Zinc Phillips (M3 x 20mm)
	327±0895	6	Terminal, Sumi 2195			4	Nut (M3)
		1	Connector, 6±Way			1	Receptacle, Ind 220
			Blank Option			4	Screw, Black Zinc Phillips (M4 x 20mm)
	300±3829	1	Panel, Blank			4	Nut (M4)
	327±0847	6	Screw, Black Zinc Phillips (8±32 x 1/2°)		323±1518	1	Receptacle, Ind 220
	327±0849	6	Washer, Black Zinc Lock (#8±32)			4	Screw, Black Zinc Phillips (M4 x 20mm)
	517±0297	6	Plugs, Hole (Breaker)			4	Nut (M4)
			1U + 2Y Option		320±0540	2	Breaker, Circuit (15A)
	300±3826	1	Panel, UK		517±0297	4	Plugs, Hole (Breaker)
	327±0847	6	Screw, Black Zinc Phillips (8±32 x 1/2°)			1	Rollcage
	327±0849	6	Washer, Black Zinc Lock (8±32)		403±2960	1	Paint, Rollcage
					327±0948	1	Tank, Fuel
					159±1234	1	Bolt, U
	300±3833±03	1	Cover, Ind		327±0923	4	Cap, Gauged Gas
	327±0847	2	Screw, Black Zinc Phillips (8±32 x 1/2°)		415±0634	1	Line, Fuel (38°)
	327±0850	2	Nut (#8±32)		327±0859	24	Clip, Fuel Line
	323±1513	1	Receptacle, UK Panel		327±0860	2	Shield, Heat
	323±1514	1	Cover, UK Panel		134±4916	1	Paint, Heat Shield
		2	Screw, Black Zinc Phillips (M3 x 20mm)		327±0935	1	Shield, Heat
		2	Nut (M3)		134±4913	1	Strap, Ground
	323±1521	2	Receptacle, Ind 110		337±2462	1	Screw, Hex Hd (5/16±18 x 3/4°)
		8	Screw, Black Zinc Phillips (M4 x 20mm)		327±0887	1	Nut, Chrome (5/16±18)
		8	Nut (M4)		327±0877	1	Channel, Engine Support
		2	Breaker, Circuit (10A)		403±3249	1	Bumper ± with Stud
					327±0880	2	Washer, Chrome (5/16 x 1±1/2°)
					327±0877	8	Nut, Chrome (5/16±18)

**Control
50Hz
(Spec 34879)**

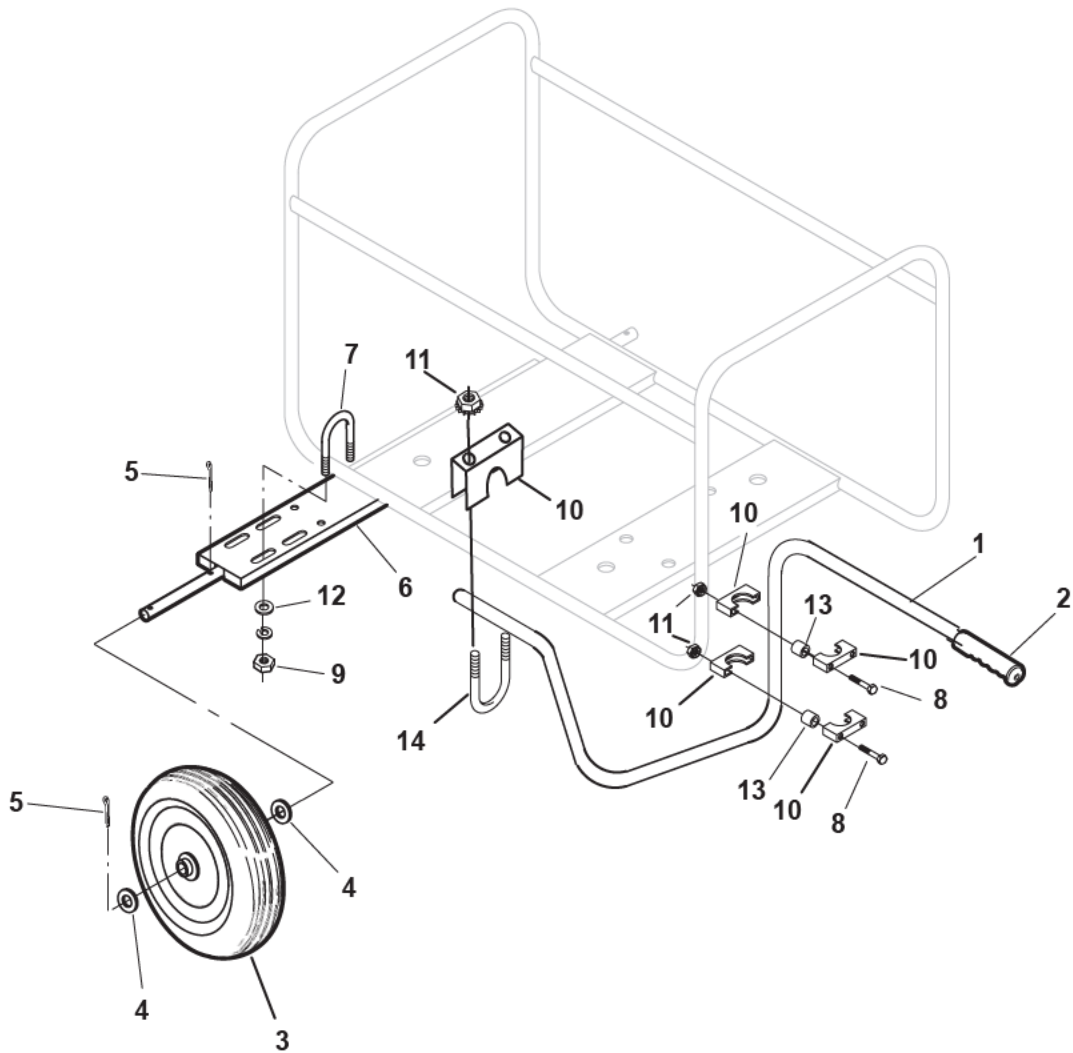
REF NO.	PART NO.	QTY USED	PART DESCRIPTION	REF NO.	PART NO.	QTY USED	PART DESCRIPTION
	327±0878	4	Screw, Hex Head (Engine Bolt) (3/8±16 x 1±1/4 ^o)		327±0839	1	Clip, Black Battery
	327±0879	4	Washer, Lock (Engine Bolt) (3/8±16)		327±0885	3	Ty±Wrap
	327±0837	1	Cable, Battery		327±0890	1	Plug, 12VDC
	327±0838	1	Clip, Red Battery		327±0901	2	Screw (M3 x 8mm)
					327±0902	2	Screw (M3)

Dolly Kit (Spec 34879 and 38018)



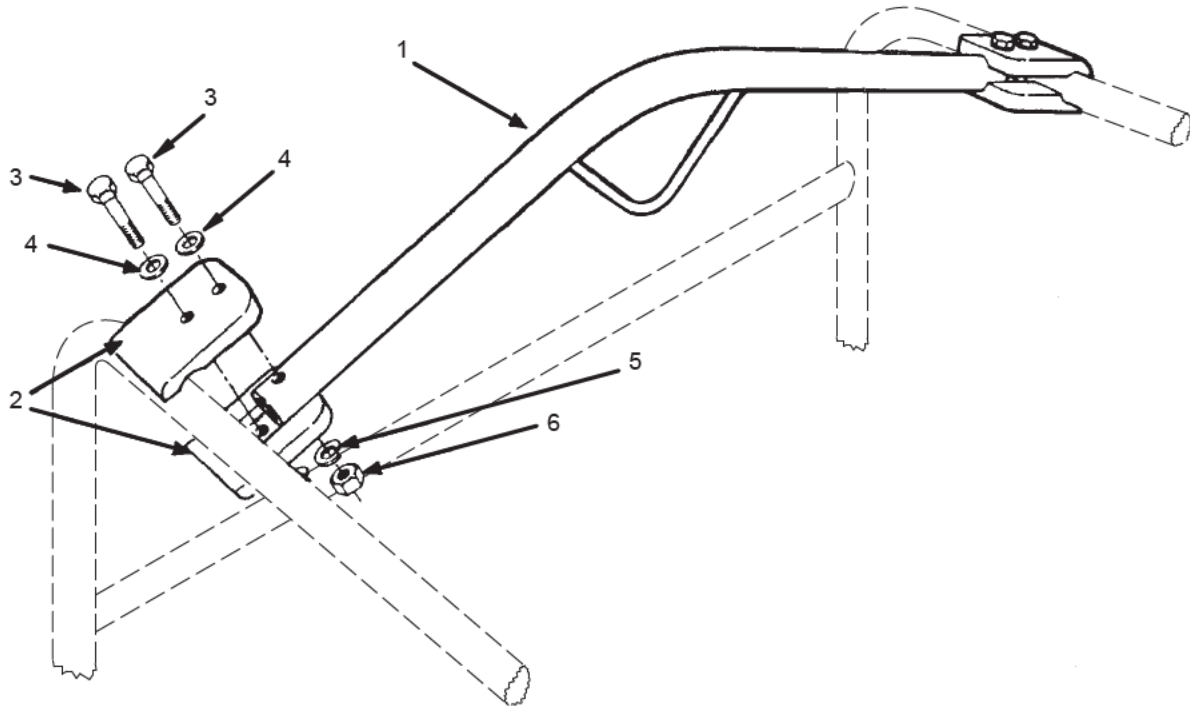
REF NO.	PART NO.	QTY USED	PART DESCRIPTION	REF NO.	PART NO.	QTY USED	PART DESCRIPTION
	410±1074	1	Kit, Dolly	13	800±0005	4	Screw, Cap ± Hex Head (1/4±20 x 3/4)
1	410±1070	4	Clamp	14	526±0052	16	Washer, Flat (1/4)
2	410±1071	2	Handle	15	327±0861	14	Nut, Keps (1/4±20)
3	403±1477	2	Grip	16	327±0953	2	Bumper
4	800±0033	4	Screw, Hex Head Cap (5/16±18 x 2)	17	800±0007	2	Screw, Cap ± Hex Head (1/4±20 x 1)
5	526±0054	4	Washer, Flat (5/16)	18		2	Spacer
6	327±0882	4	Washer, Lock (5/16)	19	327±0880	2	Washer, Flat (5/16 x 1.5)
7	327±0877	4	Nut, Hex (5/16±18)	20	155±2562	1	Extension, Exhaust
8	410±1072	2	Wheel	21	155±1256	1	Clamp, Muffler (1±1/8)
9	410±1104	1	Axel Assy	22	370±4074	1	Spacer, Exhaust
10	410±1105	4	Bolt, U	23	410±1099	1	Bracket, Support
11	526±0198	4	Washer, Flat (5/8 x 1.5 x .062 Thick)	24	410±1100	1	Bracket, Support
12	516±0115	4	Pin, Cotter (1/8 x 1.5)				

Dolly Kit



REF NO.	PART NO.	QTY USED	PART DESCRIPTION	REF NO.	PART NO.	QTY USED	PART DESCRIPTION
	410±1166	1	Kit, Wheel	8	800±0037	8	Screw, Hex Head Cap (5/16±18 x 3°)
1	410±1167	2	Handle, Wheel Kit	9	327±0861	8	Nut, Keps (1/4±20)
2	403±1477	2	Grip, Handle	10	327±1195	10	Clamp, U
3	410±1072	2	Wheel	11	327±0877	12	Nut, Keps (5/16±18)
4	526±0198	4	Washer, Flat (5/8°)	12	526±0054	8	Washer, Flat (5/16)
5	516±0115	4	Pin, Cotter	13	327±1211	8	Spacer, Clamp
6	410±1168	1	Axle	14	327±1213	2	Bolt, U (5/16±18)
7	410±1105	4	Bolt, U				

Lifting Kit



REF NO.	PART NO.	QTY USED	PART DESCRIPTION	REF NO.	PART NO.	QTY USED	PART DESCRIPTION
1	403±3172	1	Kit, Lifting	3	800±0033	4	Screw, Cap ± Hex Head (5/16±18 x 2)
	403±3075	1	Bracket, Lifting	4	526±0054	4	Washer, Flat (5/16)
	403±3077	1	1.7 & 2.5 Std	5	850±0045	4	Washer, Lock ± Spring (5/16)
2	410±1070	4	2.5 PRO	6	862±0015	4	Nut, Hex (5/16±18)
			Clamp				

Engine Gasket Kit

REF NO.	PART NO.	QTY USED	PART DESCRIPTION	REF NO.	PART NO.	QTY USED	PART DESCRIPTION
	168±0216	1	Kit, Engine Gasket		185±2522	1	Gasket, Valve Cover
	185±2530	1	Gasket, Gearcase		185±2930	1	Gasket, Fuel Filter
	185±2531	1	Gasket, Cylinder Head		185±2885	1	O'Ring, Fuel Filter
	185±2878	1	Gasket, Breather Cover		150±2448	1	Gasket, Governor Lever
	185±3078	1	O'Ring, Oil Fill Plug		185±4561	1	Gasket, Carburetor
	185±3077	2	Gasket, Oil Drain				Bowl±to±Body
	185±3709	1	Gasket, Air Cleaner Mounting		185±4506	1	Gasket, Carburetor Bowl
	185±2951	1	Gasket, Carburetor Flange		185±4565	1	Seal, Throttle Shaft
	185±2908	1	Gasket, Insulator		185±3100	1	Seal, Crankshaft Oil
	185±2900	1	Gasket, Intake Elbow		185±4513	1	Seal, Crankshaft Oil
	185±2901	1	Gasket, Muffler				

Labels

REF NO.	PART NO.	QTY USED	PART DESCRIPTION	REF NO.	PART NO.	QTY USED	PART DESCRIPTION
			Label, Model Ident				Vapors
	098±6185±01	1	1400		098±6192	1	Label, Warning Hazardous Voltage
	098±6185±02	1	1700				
	098±6185±04	1	2000		098±6074	1	Label, Warning General
	098±6185±03	1	2500		098±6277	1	Label, Do Not Overfill
			Label, Model Ident		327±0884	1	Label, Oil Drained
	098±6188±01	1	Pro2500		327±0903	1	Label, AC/DC
	098±6188±04	1	Pro2000		098±6263	1	Label, No Spark Arrestor (1.7, Spec 1 Only)
	098±6388	1	Label, Phone Info				
	098±6190	1	Label, Warning Exhaust Gas & Hot Exhaust Pipe		098±6408	1	Decal, Earth
	098±6191±01	1	Label, Warning Gasoline				

Numerical Index

<u>Part No.</u>	<u>Page</u>	<u>Part No.</u>	<u>Page</u>	<u>Part No.</u>	<u>Page</u>	<u>Part No.</u>	<u>Page</u>
098±6074, 36		185±2522, 10, 35		185±2875, 12		185±2928, 6	
098±6185±01, 36		185±2526, 5		185±2876, 5		185±2930, 12, 21, 35	
098±6185±02, 36		185±2527, 17, 18		185±2877, 5		185±2931, 6	
098±6185±03, 36		185±2528, 14		185±2878, 5, 35		185±2932, 8	
098±6185±04, 36		185±2529, 17, 18		185±2879, 6, 7, 8		185±2933, 6, 7	
098±6188±01, 36		185±2530, 5, 35		185±2880, 10		185±2942, 14, 15	
098±6188±04, 36		185±2531, 5, 35		185±2881, 12		185±2951, 6, 7, 8, 35	
098±6190, 36		185±2532, 11		185±2882, 20		185±2955, 22	
098±6191±01, 36		185±2533, 11		185±2883, 13		185±2969, 19	
098±6192, 36		185±2534, 11		185±2884, 6, 7, 8		185±2970, 19	
098±6263, 36		185±2541, 6, 8		185±2885, 12, 21, 35		185±2976, 18	
098±6277, 36		185±2549, 17, 18, 28		185±2886, 5		185±2978, 13	
098±6388, 36		185±2550, 17, 18, 28		185±2892, 9		185±2983, 19, 20	
098±6408, 36		185±2572, 9		185±2894, 12		185±2991, 19, 20	
100±2952, 5		185±2573, 12		185±2895, 13		185±2992, 14	
100±2954, 5		185±2576, 13		185±2898, 13		185±2993, 14, 15	
100±3359, 5		185±2728, 12		185±2899, 6, 7, 8		185±2994, 14	
102±1367, 5		185±2731, 10		185±2900, 6, 7, 8, 35		185±2995, 14	
134±4913, 30		185±2732, 10		185±2901, 9, 35		185±2996, 14, 15	
134±4916, 30		185±2740, 10		185±2902, 5		185±2998, 12, 21	
150±2275, 10		185±2754, 22		185±2903, 10		185±2999, 17, 18	
150±2286, 13		185±2755, 10		185±2904, 10		185±3012, 14, 15	
150±2448, 13, 35		185±2756, 9		185±2905, 11		185±3051, 12, 21	
155±1256, 32		185±2757, 6		185±2906, 11		185±3077, 5, 35	
155±2562, 32		185±2758, 17, 18		185±2907, 6, 7, 8		185±3078, 5, 35	
155±2578, 9		185±2759, 17, 18		185±2908, 6, 7, 35		185±3088, 11	
159±1234, 28, 30		185±2763, 22		185±2909, 13		185±3094, 11	
159±1442, 28		185±2778, 12		185±2910, 13		185±3100, 11, 35	
167±1621, 17, 18		185±2784, 18		185±2911, 10		185±3107, 17	
168±0216, 35		185±2788, 5		185±2912, 10		185±3175, 5	
185±2305, 10		185±2789, 6, 7, 8		185±2913, 10		185±3365, 11	
185±2366, 13		185±2865, 5		185±2914, 10		185±3366, 11	
185±2386, 7, 12		185±2867, 9		185±2915, 11		185±3367, 11	
185±2390, 17		185±2868, 12		185±2916, 11		185±3368, 11	
185±2398, 8		185±2869, 12		185±2919, 11		185±3369, 11	
185±2480, 12		185±2870, 19		185±2920, 11		185±3370, 11	
185±2498, 12, 21		185±2871, 19		185±2921, 5		185±3371, 11	
185±2506, 11		185±2872, 13		185±2922, 5		185±3372, 12	
185±2507, 6, 7, 19		185±2873, 6, 7		185±2925, 6		185±3389, 10	
185±2519, 5		185±2874, 9		185±2927, 6, 7, 8		185±3392, 10	

Numerical Index

<u>Part No.</u>	<u>Page</u>	<u>Part No.</u>	<u>Page</u>	<u>Part No.</u>	<u>Page</u>	<u>Part No.</u>	<u>Page</u>
185±3393,	10	185±4994,	23, 24, 25, 26	185±5251,	17, 18	185±7187,	18
185±3394,	10	185±5000,	23, 24, 25, 26	185±5252,	19	185±7192,	5
185±3395,	10	185±5005,	23, 24, 25, 26	185±5254,	14, 15	185±7193,	5
185±3396,	10	185±5096,	5	185±5275,	18	185±7194,	8
185±3397,	10	185±5097,	5	185±5289,	14	185±7195,	10
185±3398,	10	185±5100,	10	185±5308,	6, 7	185±7196,	11
185±3399,	10	185±5101,	10	185±5309,	6, 7, 8	185±7197,	11
185±3416,	11	185±5102,	10	185±6378,	15	185±7198,	12, 21
185±3467,	20	185±5105,	10	185±6835,	7, 8	185±7199,	17, 18
185±3469,	19, 20	185±5106,	10	185±6836,	7, 8	185±7200,	15
185±3503,	17, 18	185±5111,	11	185±6837,	7, 8	185±7201,	15
185±3566,	13	185±5116,	11	185±6952,	7, 8	185±7202,	15
185±3654,	5	185±5147,	13	185±6957,	13	185±7203,	15
185±3657,	12	185±5148,	13	185±7148,	15	185±7204,	15
185±3675,	10	185±5169,	19, 20	185±7157,	18	192±0444,	14, 15
185±3692,	6	185±5198,	5	185±7158,	18	249±0196,	26
185±3697,	6, 7, 9	185±5203,	5	185±7160,	15	249±0671,	26
185±3709,	7, 35	185±5204,	5	185±7161,	5	249±0688,	23, 24, 25
185±3725,	17, 18	185±5205,	5	185±7162,	5	249±0690,	23, 24, 25, 26
185±3727,	11	185±5210,	17	185±7163,	8	249±0691,	23, 24, 25
185±3730,	5, 17, 18	185±5211,	17	185±7164,	8, 20	249±0693,	23, 24
185±3802,	12	185±5212,	17	185±7165,	8	249±0695,	23, 24, 25, 26
185±4066,	7, 8	185±5213,	17	185±7166,	8	249±0700,	23
185±4498,	13	185±5215,	9	185±7167,	20	249±0701,	24, 25, 26
185±4499,	13	185±5216,	19	185±7168,	20	249±0704,	23
185±4506,	19, 20, 35	185±5217,	19	185±7171,	13	249±0705,	24, 25, 26
185±4513,	11, 35	185±5218,	19, 20	185±7172,	16	249±0706,	23
185±4543,	17, 18	185±5219,	19, 20	185±7173,	16	249±0707,	24, 25, 26
185±4547,	11	185±5220,	19, 20	185±7174,	16	249±0708,	23
185±4551,	10	185±5221,	13	185±7175,	16	249±0709,	24
185±4559,	19, 20	185±5222,	13	185±7176,	16	249±0710,	25, 26
185±4561,	19, 20, 35	185±5223,	14	185±7177,	16	249±0714,	26
185±4564,	20	185±5224,	19, 20	185±7178,	16	249±0720,	23, 24, 25, 26
185±4565,	19, 20, 35	185±5225,	17, 18	185±7179,	16	249±0724,	23, 24, 25, 26
185±4571,	19	185±5227,	17, 18	185±7180,	16	249±0759,	25, 26
185±4739,	9	185±5236,	14, 15	185±7181,	16	249±0760,	23, 24
185±4740,	17	185±5237,	14, 15	185±7182,	16	249±0761,	26
185±4759,	20	185±5247,	14	185±7183,	16	249±0762,	26
185±4809,	20	185±5249,	19, 20	185±7184,	16	249±0770,	26
185±4944,	14, 15, 16	185±5250,	19, 20	185±7185,	16	249±0771,	26

Numerical Index

<u>Part No.</u>	<u>Page</u>	<u>Part No.</u>	<u>Page</u>	<u>Part No.</u>	<u>Page</u>	<u>Part No.</u>	<u>Page</u>
249±0772,	26	327±0849,	29, 30	327±0929,	28	410±1167,	33
249±0773,	26	327±0850,	27, 28, 29, 30	327±0935,	28, 30	410±1168,	33
249±0800,	23, 24, 25	327±0851,	28, 30	327±0945,	27	415±0634,	28, 30
249±5068,	23	327±0852,	28	327±0948,	28, 30	516±0115,	32, 33
249±5069,	24	327±0853,	28, 30	327±0953,	32	517±0297,	29, 30
249±5070,	25	327±0854,	28, 30	327±0954,	28	518±0576,	13
249±5075,	26	327±0855,	30	327±0956,	28	526±0052,	32
300±3742,	30	327±0856,	28	327±0957,	28	526±0054,	32, 33, 34
300±3814,	29	327±0857,	28, 30	327±0977,	28	526±0198,	32, 33
300±3816,	30	327±0858,	28, 29, 30	327±1008,	28	526±2077,	10
300±3818,	29, 30	327±0859,	28, 30	327±1009,	28	526±2078,	10
300±3826,	29, 30	327±0860,	28, 30	327±1010,	28	740±1006,	13
300±3827,	29	327±0861,	28, 32, 33	327±1020,	28	800±0005,	32
300±3829,	29, 30	327±0862,	28	327±1027,	28	800±0007,	32
300±3830,	29	327±0871,	30	327±1048,	28	800±0033,	32, 34
300±3833±02,	29, 30	327±0877,	27, 28, 29, 30, 32, 33	327±1049,	27, 28	800±0037,	33
300±3833±03,	29, 30	327±0878,	31	327±1088,	28	815±0753,	8, 13
301±6257,	30	327±0879,	28, 31	327±1195,	33	815±0781,	5
320±0540,	27, 29, 30	327±0880,	27, 28, 29, 30, 32	327±1208,	28	815±0783,	7
320±0541,	28	327±0881,	29, 30	327±1211,	33	815±3014,	6
323±1106,	27, 28	327±0882,	27, 32	327±1213,	33	850±0045,	34
323±1513,	29, 30	327±0883,	28	332±1553,	29, 30	862±0015,	34
323±1514,	29, 30	327±0884,	36	337±2462,	27, 28, 29, 30		
323±1515,	29	327±0885,	31	370±4074,	32		
323±1516,	29, 30	327±0887,	27, 28, 29, 30	403±1477,	32, 33		
323±1518,	29, 30	327±0890,	27, 29, 31	403±2960,	30		
323±1519,	29	327±0892,	30	403±3061,	29		
323±1520,	29	327±0893,	28, 30	403±3075,	34		
323±1521,	29, 30	327±0894,	28	403±3077,	34		
323±1522,	29	327±0895,	28, 30	403±3172,	34		
327±0540,	27	327±0901,	28, 29, 30, 31	403±3249,	29, 30		
327±0833,	27, 28	327±0902,	28, 29, 30, 31	410±1070,	32, 34		
327±0836,	27, 28	327±0903,	36	410±1071,	32		
327±0837,	27, 28, 29, 31	327±0905,	28	410±1072,	32, 33		
327±0838,	27, 29, 31	327±0911,	28, 29, 30	410±1074,	32		
327±0839,	27, 29, 31	327±0912,	28, 29, 30	410±1099,	32		
327±0841,	27, 28	327±0921,	28	410±1100,	32		
327±0843,	27, 28, 29, 30	327±0923,	28, 30	410±1104,	32		
327±0846,	28, 29, 30	327±0924,	28	410±1105,	32, 33		
327±0847,	27, 28, 29, 30			410±1166,	33		

Onan

Onan Corporation
1400 73rd Avenue N.E.
Minneapolis, MN 55432
1-800-888-ONAN
612-574-5000 International Use
Telex: 275477
Fax: 612-574-8087

Onan is a registered trademark of Onan Corporation



Redistribution or publication of this document by any means, is strictly prohibited.