



Parts Manual

Cummins **Onan**

Performance you rely on.™



Home Standby Generator Set

GSAA (Spec A-C)

MODEL IDENTIFICATION

To avoid errors or delay in filling your parts order, always give the MODEL, SPEC NO. and SERIAL NO. from the Onan nameplate.

For handy reference, insert your nameplate information in the spaces below.

MODEL AND SPEC NO.

SERIAL NO.

DIGITAL CONTROL SOFTWARE VERSION
AND DATE (IF APPLICABLE)

SAFETY PRECAUTIONS

The following symbols are used in Onan manuals to alert users to the potentially dangerous conditions relating to maintenance of equipment and replacement of parts. Please read and observe.



This symbol warns of immediate hazards which will result in severe personal injury or death.



This symbol refers to a hazard or unsafe practice which can result in severe personal injury or death.



This symbol refers to a hazard or unsafe practice which can result in severe personal injury or product or property damage.

PRODUCT SAFETY PRECAUTIONS



Service and repair of Onan equipment must be performed by trained, experienced personnel only. Improper service or repair may result in property damage, severe personal injury or death. Do not use this catalog as a guide to servicing your equipment. Read and follow the IMPORTANT SAFETY INSTRUCTIONS in the Service Manual appropriate for the equipment you are working on.



Contact with USED ENGINE OILS has been identified by a United States federal agency and some USA state agencies as causing CANCER or REPRODUCTIVE TOXICITY. When checking or changing engine oils take all necessary precautions not to ingest, breathe the fumes or contact the used oil.



Contact with ASBESTOS has been identified by a United States federal agency and some USA state agencies as causing CANCER or REPRODUCTIVE TOXICITY. When handling engine gaskets take all necessary precautions not to ingest, breathe or contact the dust from the gaskets! Use adequate ventilation and wear protective gloves, masks and clothing!



Contact with BENZINE and LEAD, found in gasoline, fuel additives and solvents has been identified by a United States federal agency and some USA state agencies as causing CANCER or REPRODUCTIVE TOXICITY. When checking, draining or adding gasoline and fuel additives or using solvents take all necessary precautions not to ingest, breathe the fumes or contact the liquids. Use adequate ventilation and wear protective gloves, masks and protective clothing!



Servicing and replacement of MARINE CRITICAL PARTS must be carried out by persons trained and experienced with marine gasoline engine-generator safety requirements!

Introduction

This parts catalog applies to the standard generator sets listed below. Parts are arranged in groups of related items and each illustrated part is defined by a reference number corresponding to the same reference number in the parts list. Parts illustrations are typical. Using the model and specification number from your generator set nameplate, select parts that apply to your set. Right and left sides are determined by facing the generator end (front) of the set.

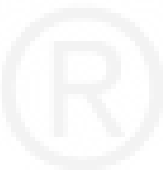
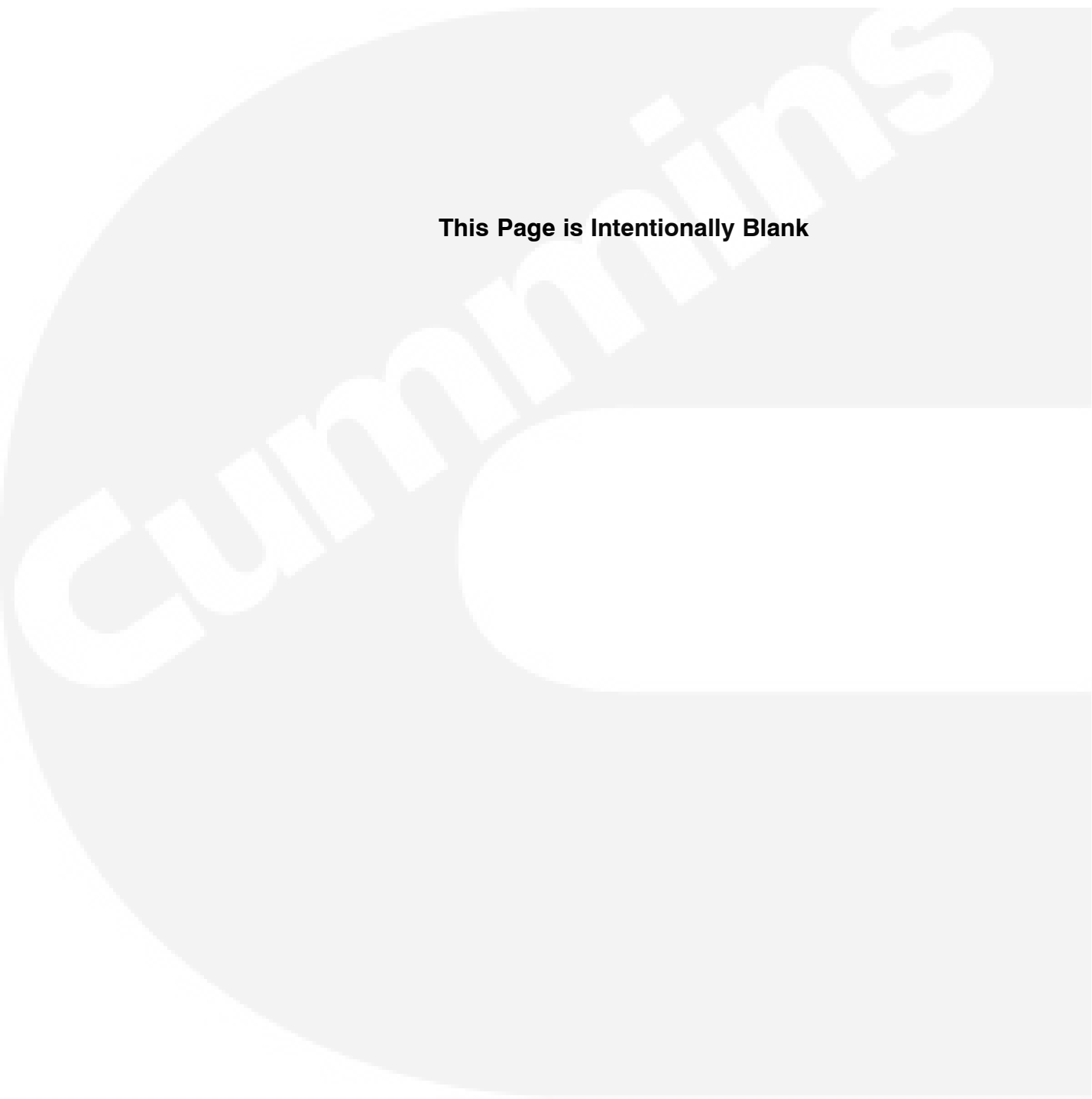
Generator Set Data Table

Model Identification	Fuel	Wiring Diagram	Voltage	Hertz	Phase
12GSAA-6707A	Natural Gas	630-3514	120 / 240	60	1

* – The specification number denotes customer requested options or deviations from a standard (1A, 1B, etc.) model. The specification letter advances (A, to B, to C, etc.) with major manufacturing changes.



This Page is Intentionally Blank



Index

A

Actuator, **12**
Adapter, Air Cleaner, **19**
Adapter, Elbow 1, **13**
Adapter, Generator, **19**
Adapter, Oil Cooler, **13**
Arm, Rocker, **9**
Assy, Cylinder Head 1, **7**
Assy, Cylinder Head 2, **7**

B

Baffle, Cylinder 1, **10**
Baffle, Cylinder 2, **10**
Baffle, Cylinder 3, **10**
Baffle, Cylinder 4, **10**
Bearing, Main, **7**
Block, Generator Brush, **29**
Block, Short, **7**
Bracket, Engine (2 Hole), **19**
Bracket, Fuel Regulator, **17, 18**
Bracket, Oil Cooler, **13**

C

Camshaft, **9**
Cap, Oil Filler, **11**
Cap, Spark Plug, **14**
Clip, Push On, **29**
Coil, Charge, **14**
Coil, Ignition, **14**
Connector, Hose, **18**
Connector, Plug (35 Pin), **33**
Connector, Switch (8 Pin), **33**
Control, **26, 27, 28**
Control, Remote, **34**
Cooler, Oil, **13**
Cover, Breather, **7**
Cover, Cleaner, **9**
Cover, Enclosure, **24, 25**
Cover, Enclosure (Base), **25**

Cover, Main Bearing, **7**
Cover, Oil Pump, **11**
Cover, Rocker, **7**
Cover, Terminal, **26, 27**
Crank System, **8**
Crankcase, **6**
Crankshaft, **8**

D

Diode, Stop, **14**
Door, Weather Strip, **21, 23**

E

Elbow, Street 90, **17, 18**
Electrical, **14**
Enclosure, **20, 22**
Enclosure (Support Rod Bracket), **24, 25**
Enclosure (Support Rod), **24, 25**
Enclosure, Cover, **21, 23**
Enclosure, Left Door, **21, 23**
Enclosure, Rear Panel, **21, 23**
Enclosure, Right Door, **21, 23**
End, Bell Generator, **29**
Engine, **19**
Engine, Complete, **7**

F

Fan, Starter, **10**
Filler, Oil Pump, **11**
Filter, Oil, **13**
Flywheel, **14**

G

Gasket, **7**
Gasket 1, Cylinder Head, **7**
Gasket 2, Cylinder Head, **7**
Gasket, Breather Plate, **7**
Gasket, Enclosure (Bulb), **24, 25**
Gasket, Enclosure (Top), **24, 25**

Index

Gasket, Intake Manifold, **9**
Gasket, Main Bearing Cover, **7**
Gasket, Rocker Head Cover, **7**
Gear, Ring, **14**
Generator, **29**
Grommet (Plug), **21, 23**
Guard, Fan, **29**

H

Handle, Door Lockable, **21, 23**
Handle, Door Non Lockable, **21, 23**
Harness, **30**
Harness, Engine, **26, 27, 32**
Harness, Remote, **30**
Hinge (Left Hand), **21, 23**
Hinge (Right Hand), **21, 23**
Hinge, Spring, **24, 25**
Hose 2, Oil Cooler, **13**
Hose, Fuel (LPG & Natural Gas), **17, 18**
Hose, Vent, **17**
Housing, Blower, **10**

I

Indicator, Oil, **11**
Insulation, Back, **21, 23**
Insulation, Door, **21, 23**
Insulation, Door (Alternator), **21, 23**
Insulation, Door (Battery), **21, 23**
Insulation, Door (Engine), **21, 23**
Insulation, Door (Left End Panel), **21, 23**
Insulation, Door (Left Inner Front), **21, 23**
Insulation, Door (Left Inner Side, Top), **21, 23**
Insulation, Door (Left Inner Side), **21, 23**
Insulation, Door (Left Outer Front), **21, 23**
Insulation, Door (Left Outer, Side), **21**
Insulation, Door (Right End Panel), **21, 23**
Insulation, Door (Right Inner Front), **21, 23**
Insulation, Door (Right Inner Side), **21, 23**
Insulation, Door (Right Out Side), **21**

Insulation, Door (Right Outer Front), **21**
Intake, **15**
Intake and Exhaust, **9**
Isolator, Vibration, **19, 29**

K

Key, **8**
Key, Spare (Door), **21, 23**
Kit, Mounting, **13**

L

Label, Information, **35**
Labels, **35**
Latch, Adjustable Draw, **21, 23**
Latch, Door (Left), **24**
Latch, Door (Right), **24, 25**
Lead, **23**

M

Manifold, Intake, **9**
Mixer, **12**
Motor, Starter, **14**
Mounting, **19**
Muffler, **16**

O

O'Ring, **29**
Oil Cooler and Filter System, **13**

P

Pallet, Shipping, **21, 23**
Panel, Display, **26**
PCB (Control), **26, 27**
Pin, Dowel, **7**
Pin, Piston, **8**
Piston, **8**
Plate, Breather, **7**
Plate, Engine Mount, **19**

Index

Plate, Retainer, **7**
Plug, Hole, **21, 23**
Plug, Oil Relief, **11**
Plug, Spark, **14**
Pump, Oil, **11**
Pump, Oil (Inner Rotor), **11**
Pump, Oil (Outer Rotor), **11**

R

Regulator, **14**
Regulator, Fuel (Vapor), **17, 18**
Resonator, Air Intake, **15**
Retainer, Spring, **9**
Rod, Connecting, **8**
Rod, Push, **9**
Rotor (Generator Fan), **29**

S

Seal, Oil, **7, 7**
Sensor, Fuel Pressure, **17**
Set, Piston Ring, **8**

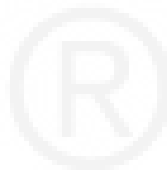
Shield, Exhaust, **21, 23**
Sleeving, Convoluted, **17, 18**
Solenoid, Duty, **17, 18**
Spring, Relief Valve, **11**
Spring, Valve, **9**
Stator (Generator), **29**
Strip, Weather (D Gasket), **21, 23**
Stud, **29**
Switch, Oil Pressure, **7**
System, Fuel, **17, 18**

T

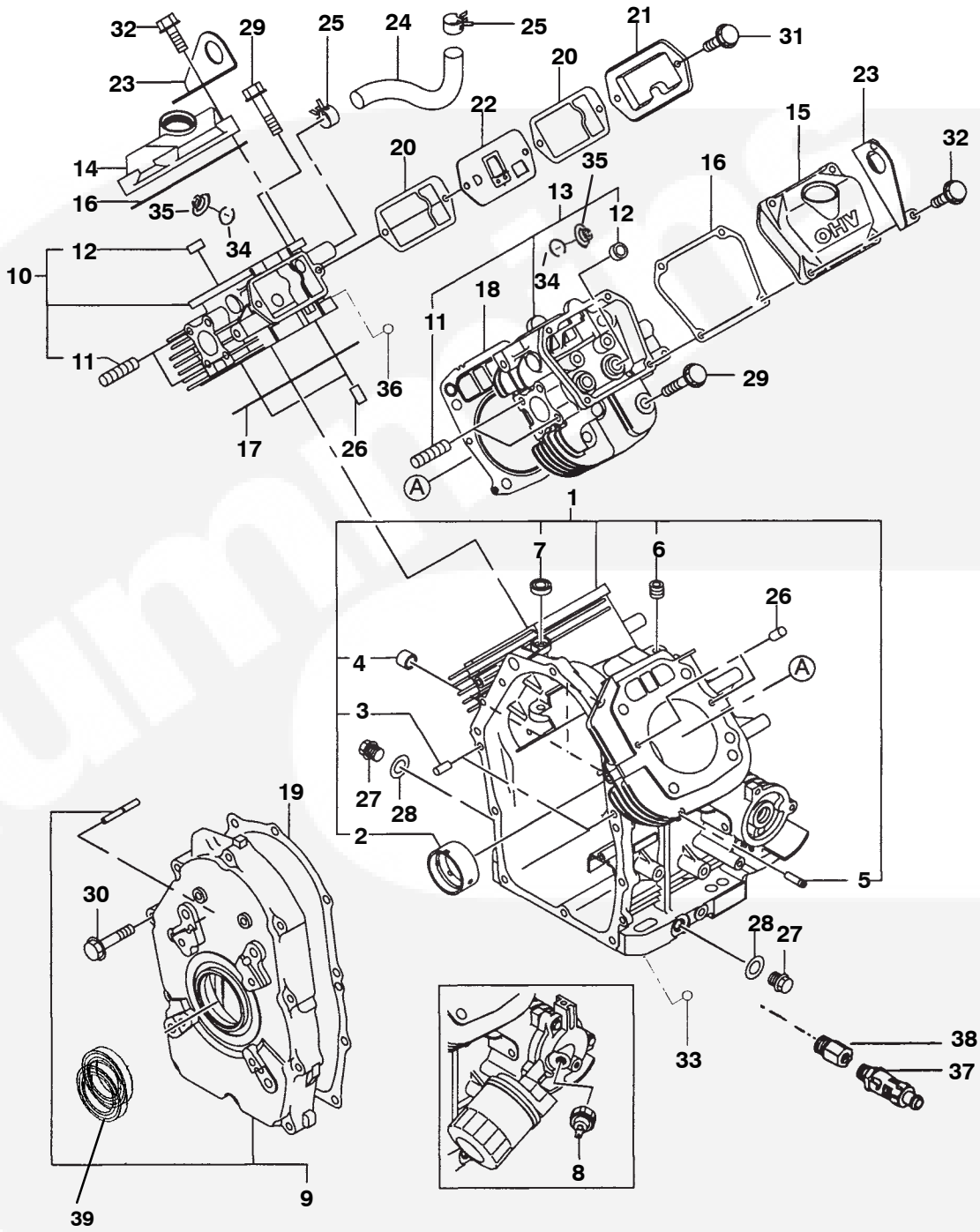
Tappet, Camshaft, **9**
Tube, Oil Indicator, **11**

V

Valve, Collet, **9**
Valve, Exhaust, **9**
Valve, Intake, **9**
Valve, Seal Intake, **7**



Crankcase

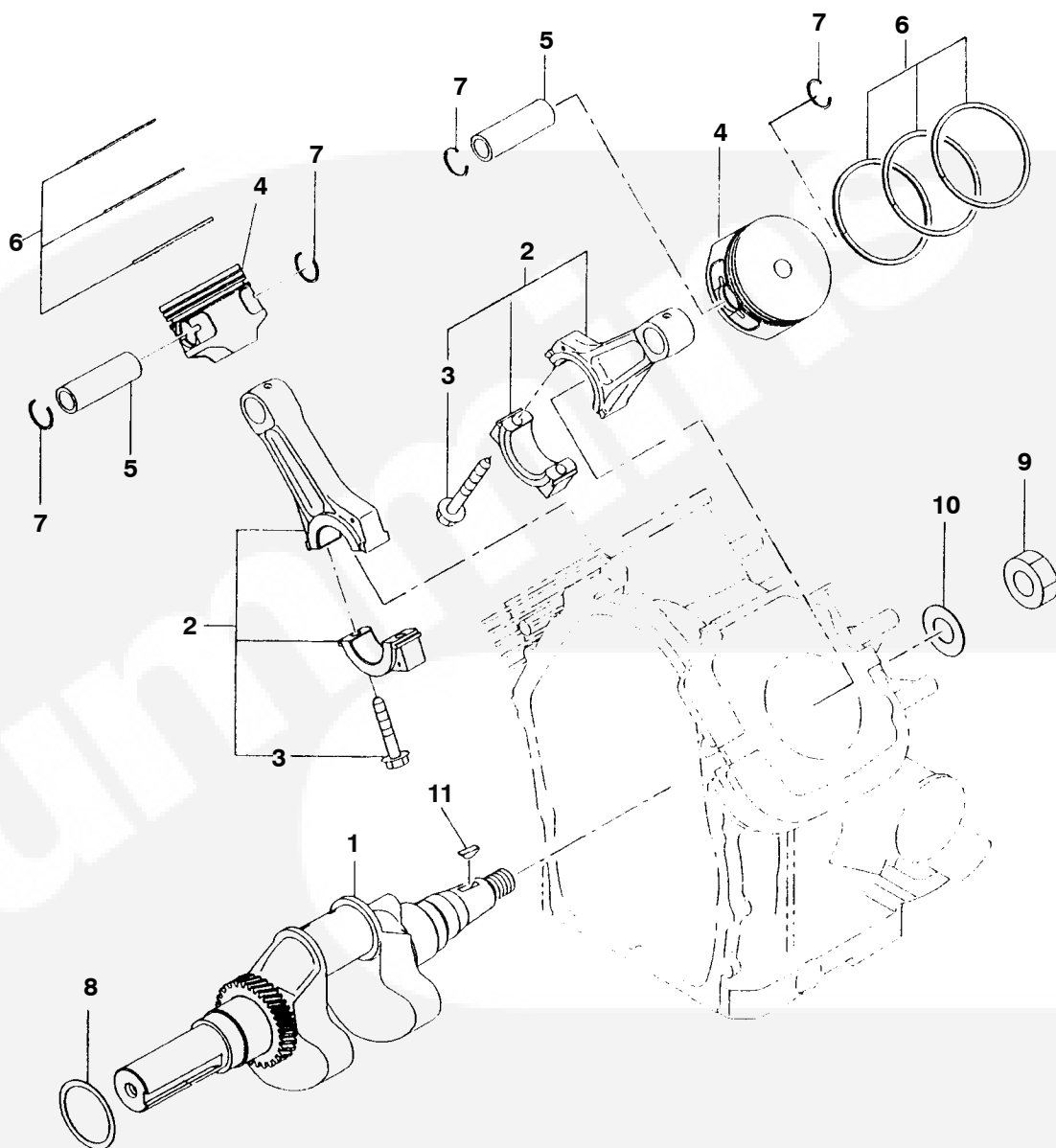


Crankcase

REF NO.	PART NO.	QTY USED	PART DESCRIPTION	REF NO.	PART NO.	QTY USED	PART DESCRIPTION
	100-3968	1	Engine , Complete	19	101-0860	1	Gasket, Main Bearing Cover
1	110-4073	1	Block, Short (Includes Parts Marked *)	20	187-6025	2	Gasket, Breather Plate
2	104-2112	1	*Bearing, Main	21	187-6026	1	Cover, Breather
3	187-6002	2	*Pin, Dowel	22	123-2416	1	Plate, Breather
4	505-2506	2	*Pipe	23	403-7205	2	Hook, Lifting
5	505-2507	1	*Pipe (Pulse)	24	187-6028	1	Tube, Breather
6	505-2508	1	*Plug, Blind	25	503-3081	2	Hose, Clamp
7	509-0487	1	*Seal, Oil	26	187-6030	4	Pin, Dowel
8	309-0724	1	Switch, Oil Pressure	27	517-0442	2	Plug
9	101-0864		Cover, Main Bearing	28	187-6032	2	Gasket
10	110-4074	1	Assy, Cylinder Head 1 (Includes Parts Marked+)	29	110-4077	8	Bolt, Flange
11	187-6016	8	+Stud	30	800-6361	10	Bolt, Flange
12	110-4075	2	+Valve, Seal Intake	31	800-6500	2	Bolt, Flange
13	110-4076	1	Assy, Cylinder Head 2 (Includes Parts Marked+)	32	110-4078	8	Bolt, Flange
14	115-0564	1	Cover, Rocker	33	187-6008	2	Ball, Steel
15	115-0565	1	Cover, Rocker	34	518-0810	2	Clip
16	187-6236	2	Gasket, Rocker Head Cover	35	110-4079	2	Plate, Retainer
17	110-4004	1	Gasket 1, Cylinder Head	36	187-6017	2	Ball, Steel
18	110-4005	1	Gasket 2, Cylinder Head	37	102-1559	1	Valve, Oil Drain
				38	102-1558	1	Adapter
				39	187-6228	1	Seal, Oil

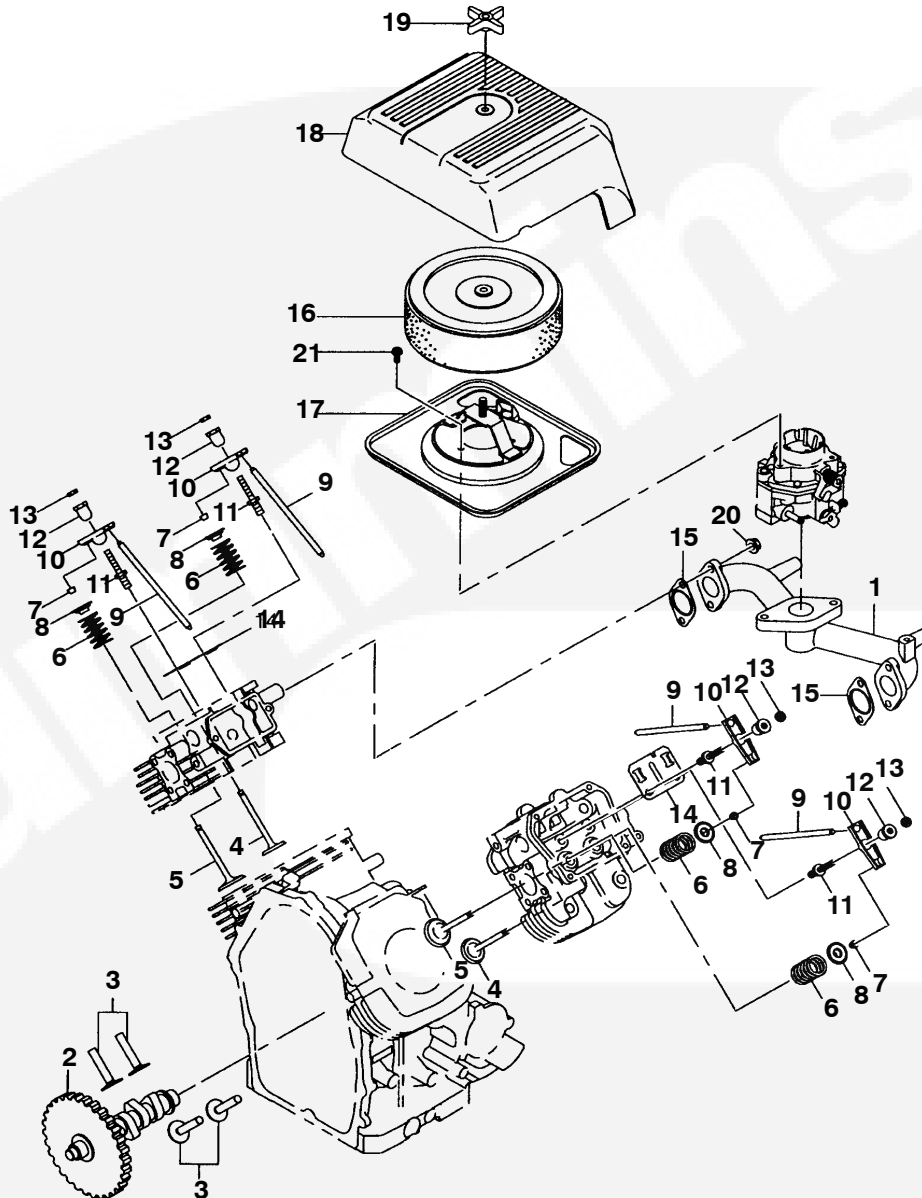


Crank System



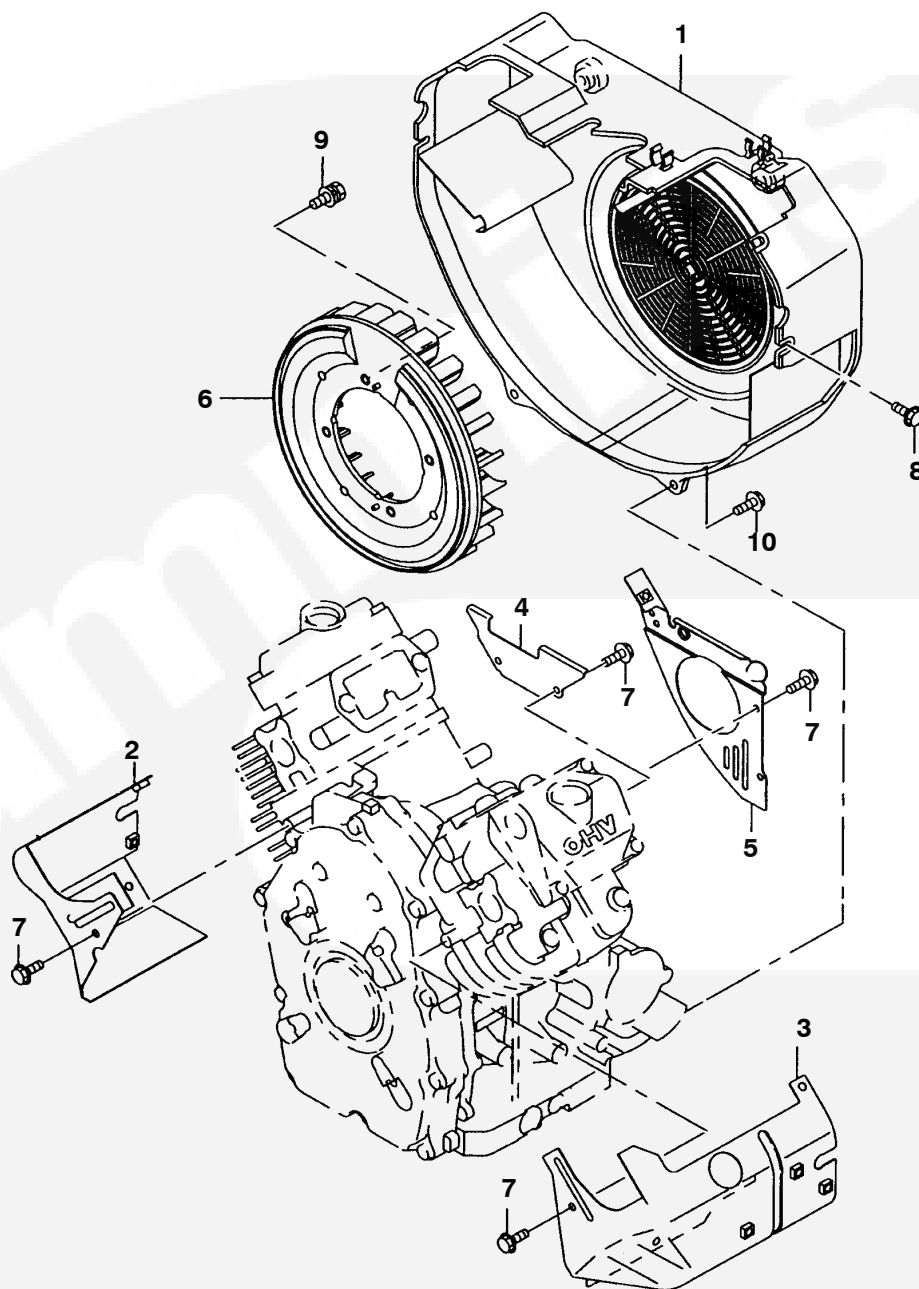
REF NO.	PART NO.	QTY USED	PART DESCRIPTION	REF NO.	PART NO.	QTY USED	PART DESCRIPTION
1	104-2150	1	Crankshaft	8		1	Spacer
2	114-0447	2	Rod, Connecting	187-6250		1	.0.8mm
3	114-0448	2	Bolt, Connecting Rod	187-6251		1	.1.0mm
4	112-0324	2	Piston	232-4219		1	.1.2mm
5	187-6043	2	Pin, Piston	9	860-2123	1	Nut
6	113-0356	2	Set, Piston Ring	10	187-6050	1	Washer
7	187-6045	4	Clip	11	187-6052	1	Key

Intake and Exhaust



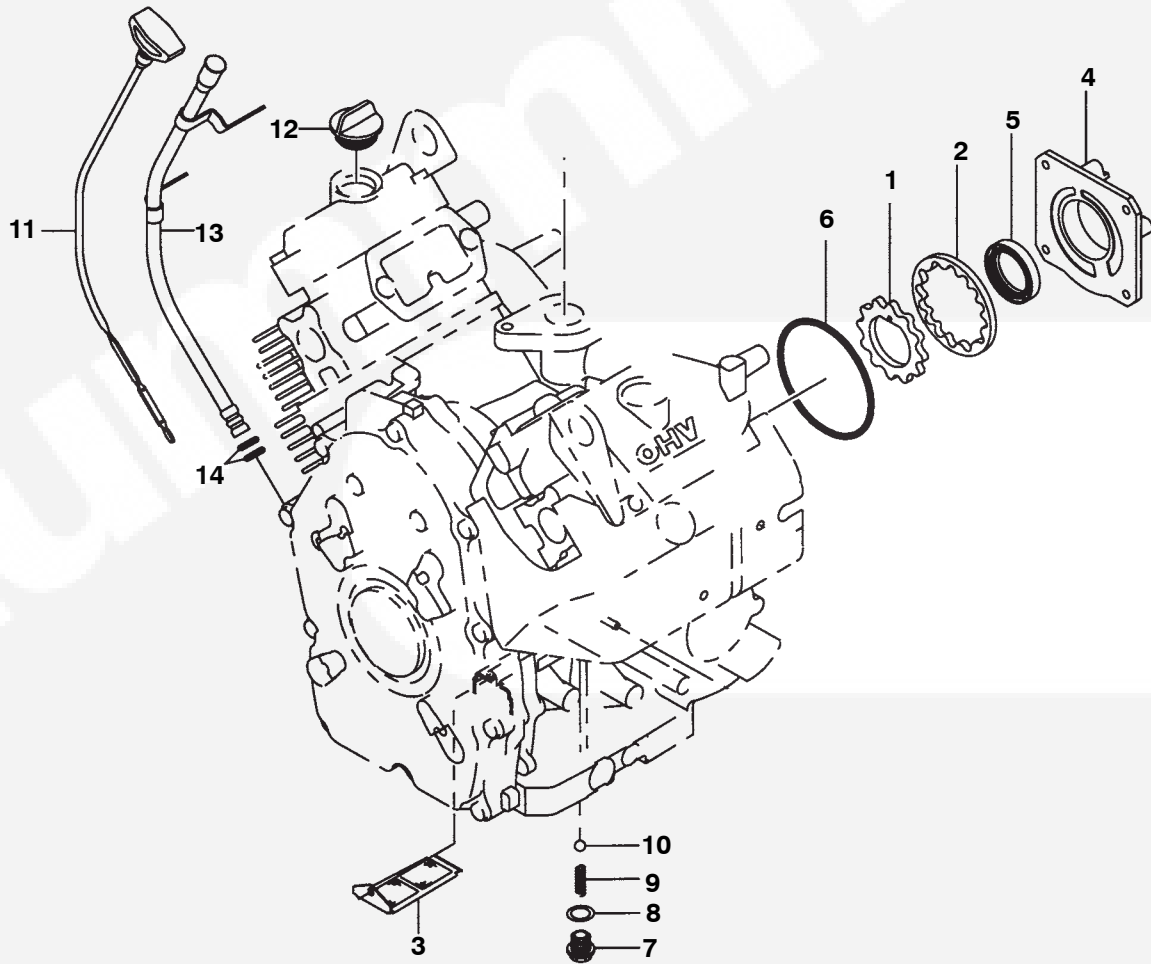
REF NO.	PART NO.	QTY USED	PART DESCRIPTION	REF NO.	PART NO.	QTY USED	PART DESCRIPTION
1	154-3280	1	Manifold, Intake	12	115-0560	4	Pivot
2	105-0770	1	Camshaft	13	187-6259	4	Nut
3	115-0566	4	Tappet	14	115-0562	2	Plate, Guide
4	110-4080	2	Valve, Intake	15	154-3250	2	Gasket, Intake Manifold
5	110-4081	2	Valve, Exhaust	16	140-4184	1	Element, Cleaner
6	187-6058	4	Spring, Valve	17	140-4276	1	Base, Cleaner
7	187-6059	8	Valve, Collet	18	140-4277	1	*Cover, Cleaner
8	187-6060	4	Retainer, Spring	19	187-6071	1	*Nut, Wing
9	187-6255	4	Rod, Push	20	187-6067	4	Nut, Flange
10	115-0558	4	Arm, Rocker	21	800-6498	3	Bolt, Flange
11	115-0559	4	Bolt, Pivot				

Fan, Starter



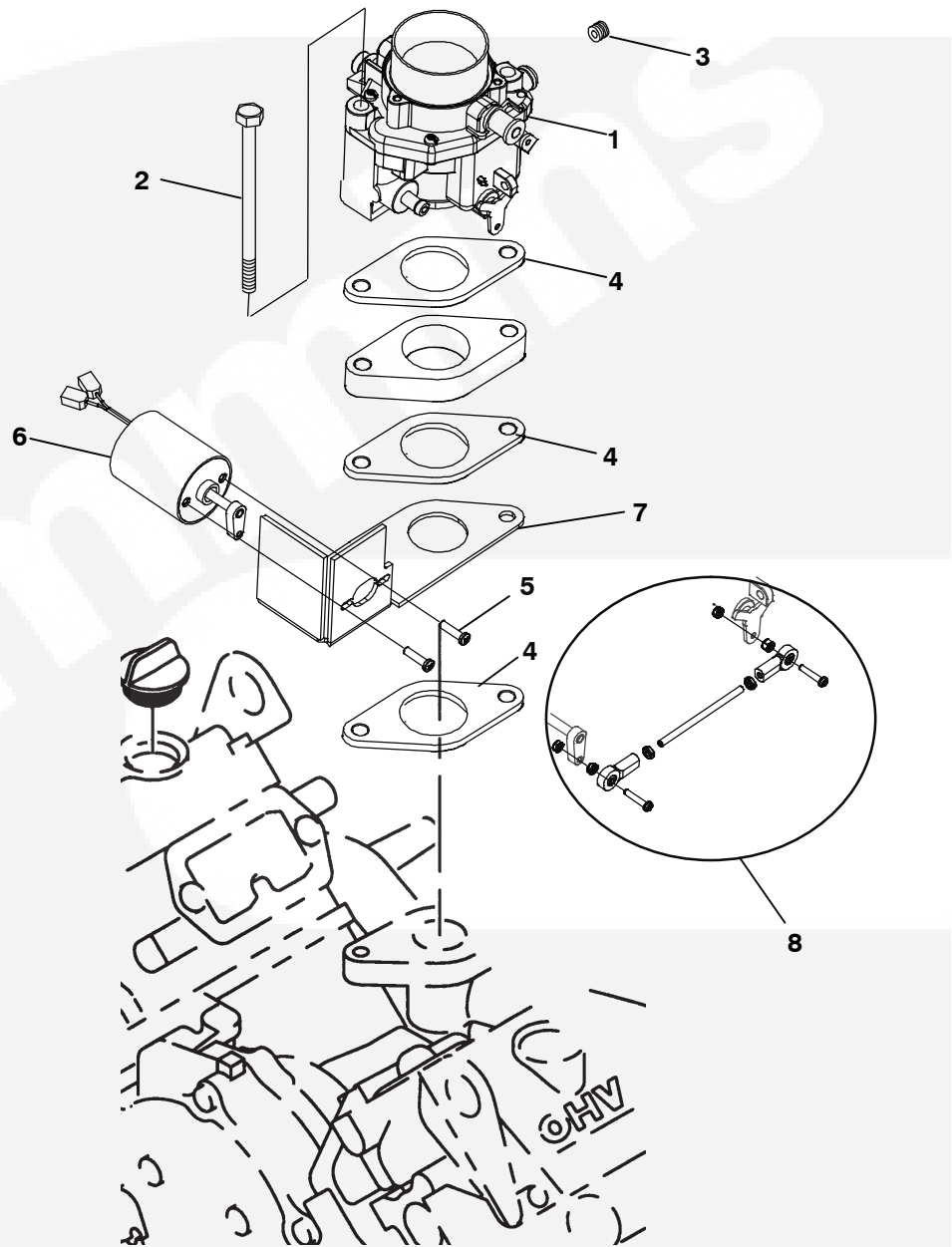
REF NO.	PART NO.	QTY USED	PART DESCRIPTION	REF NO.	PART NO.	QTY USED	PART DESCRIPTION
1	134-5380	1	Housing, Blower	6	205-0356	1	Fan
2	134-5381	1	Baffle, Cylinder 1	7	800-6498	8	Bolt, Flange
3	134-5382	1	Baffle, Cylinder 2	8	800-6499	2	Bolt, Flange
4	187-6097	1	Baffle, Cylinder 3	9	187-6099	4	Bolt , Washer
5	134-5383	1	Baffle, Cylinder 4	10	800-6500	6	Bolt, Flange

Oil Pump



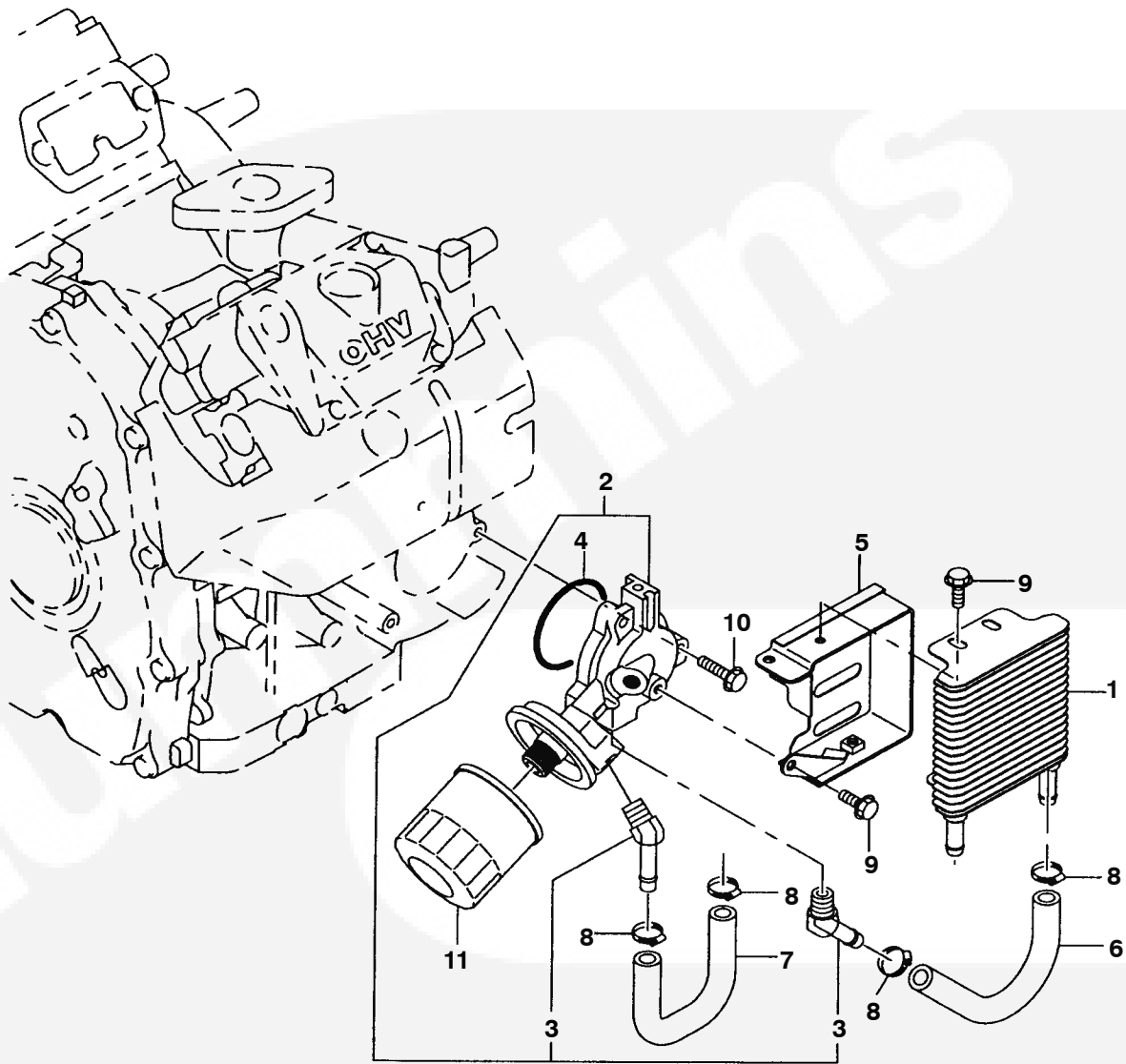
REF NO.	PART NO.	QTY USED	PART DESCRIPTION	REF NO.	PART NO.	QTY USED	PART DESCRIPTION
1	187-6103	1	Pump, Oil (Inner Rotor)	8	187-6110	1	Gasket
2	187-6104	1	Pump, Oil (Outer Rotor)	9	187-6111	1	Spring, Relief Valve
3	187-6105	1	Filler, Oil Pump	10	187-6112	1	Bearing ,Ball
4	187-6106	1	Cover, Oil Pump	11	123-2358	1	Indicator, Oil
5	509-0367	1	Seal, Oil	12	123-2359	1	Cap, Oil Filler
6	187-6108	1	O'Ring	13	123-2360	1	Tube, Oil Indicator
7	187-6109	1	Plug, Oil Relief	14	187-6194	2	O'Ring

Mixer, Actuator



REF NO.	PART NO.	QTY USED	PART DESCRIPTION	REF NO.	PART NO.	QTY USED	PART DESCRIPTION
1	146-0900	1	Mixer	5	812-0081	2	Screws
2	815-1591	2	Screw, Hex Head (M8 x 80mm)	6	150-2895	1	Actuator
3	A030H133	1	Orifice, Metering	7	146-0901	1	Bracket
4	154-3251	3	Gasket, Mixer	8	150-2914	1	Linkage

Oil Cooler and Filter System

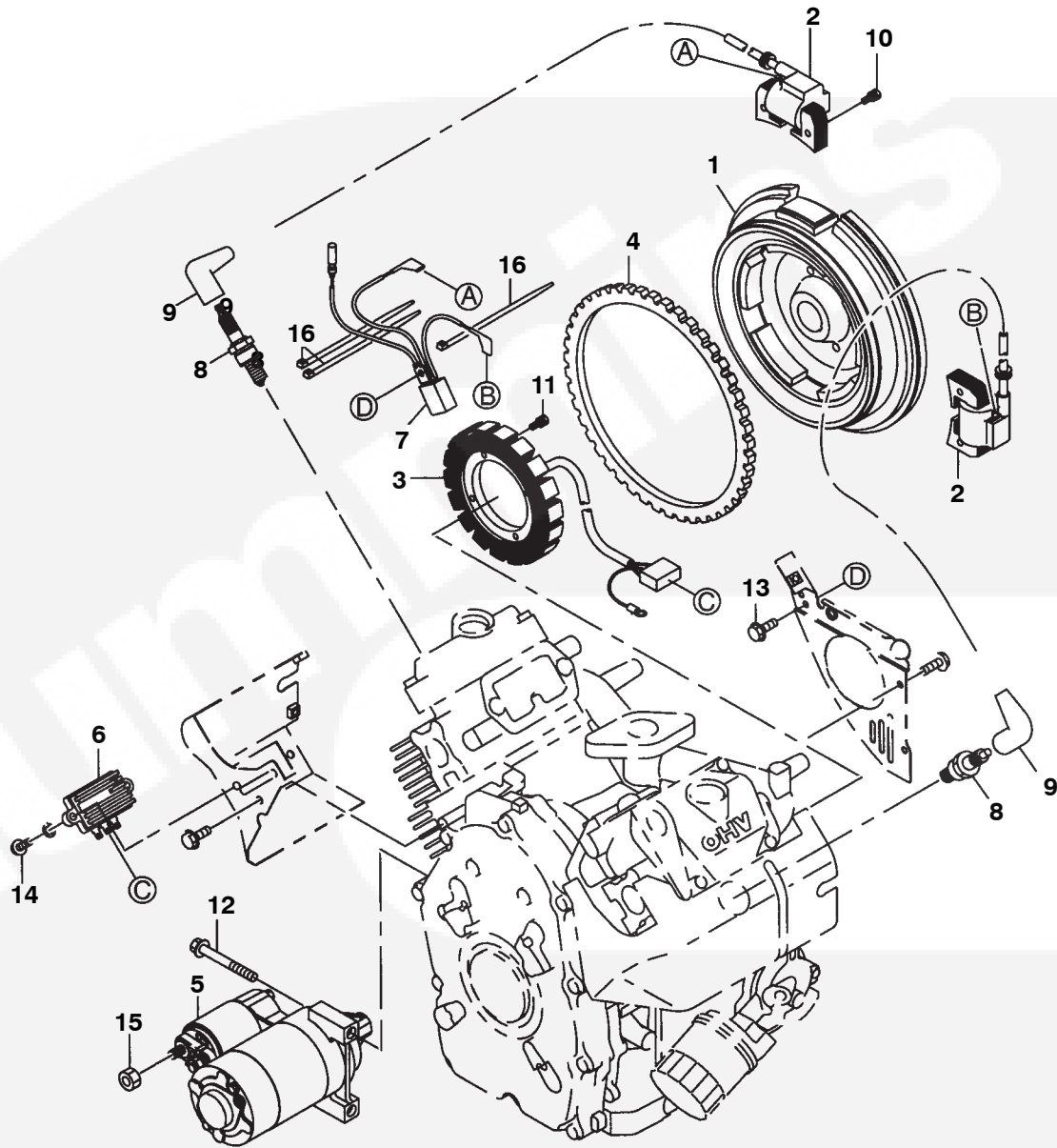


REF NO.	PART NO.	QTY USED	PART DESCRIPTION	REF NO.	PART NO.	QTY USED	PART DESCRIPTION
	A029C466	1	Kit, Mounting	6	501-1034	1	Hose 1, Oil Cooler
	403-4365	1	*Spike, Base	7	501-1035	1	Hose 2, Oil Cooler
	A029C360	1	*Hose, Fuel	8	503-3083	4	Clamp, Hose
	503-2151	1	*Hose, Oil Drain	9	800-6498	4	Bolt, Flange
1	102-1544	1	Cooler, Oil	10	110-4078	3	Bolt, Flange
2	102-1560	1	Adapter, Oil Cooler	11	122-0925	1	Filter, Oil
3	505-2509	2	Adapter, Elbow 1				
4	509-0490	1	O' Ring, Seal				
5	102-1561	1	Bracket, Oil Cooler				

*-Parts Included in Mounting Kit-shipped separately

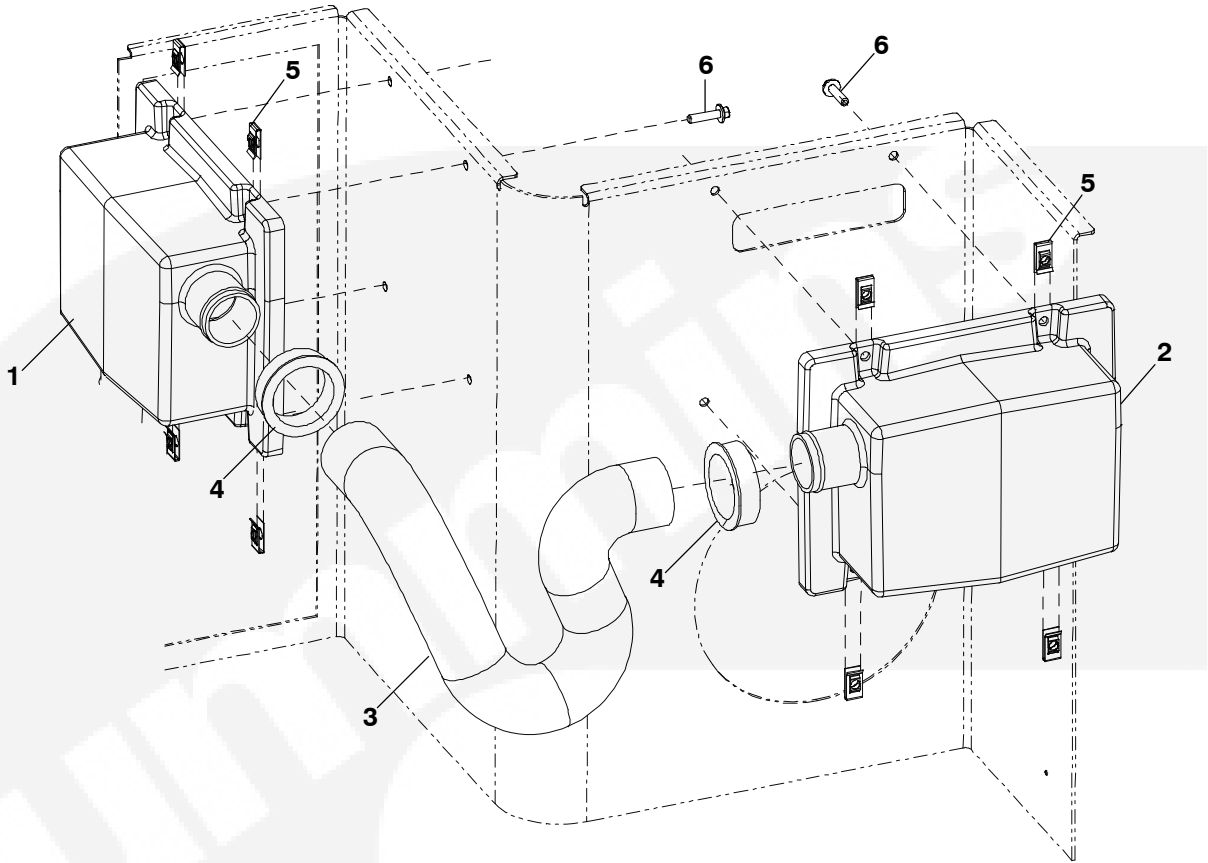


Electrical



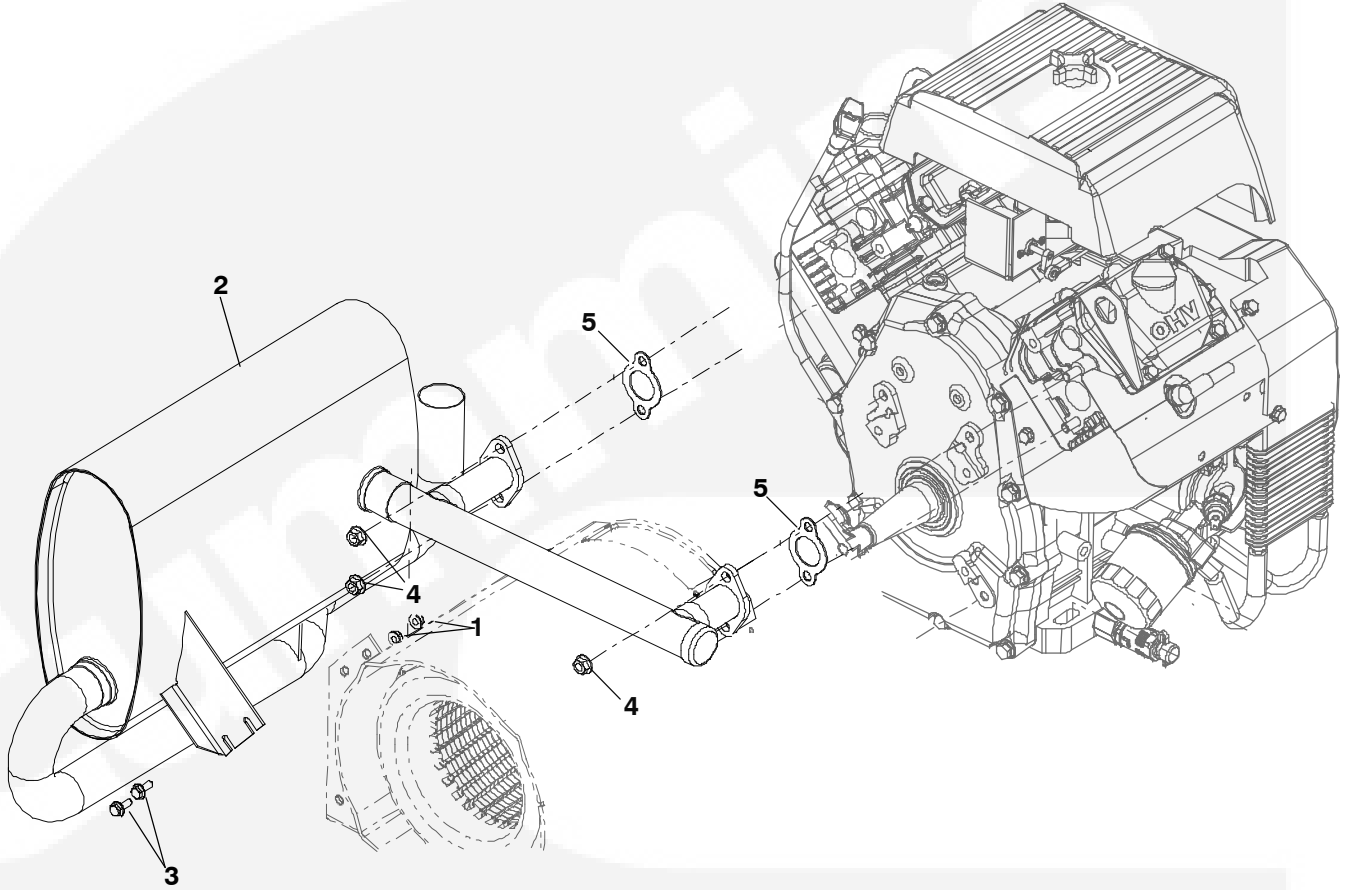
REF NO.	PART NO.	QTY USED	PART DESCRIPTION	REF NO.	PART NO.	QTY USED	PART DESCRIPTION
1	104-2113	1	Flywheel	10	800-6501	4	Screw, with Washer
2	166-0907	2	Coil, Ignition	11	800-6502	4	Screw, with Washer
3	187-6157	1	Coil, Charge	12	800-6503	2	Bolt, Flange
4	507-0040	1	Gear, Ring	13	815-1590	1	Bolt, Flange
5	187-6184	1	Motor, Starter	14	800-6499	2	Bolt, Flange
6	187-6160	1	Regulator	15	187-6067	1	Nut, Flange
7	187-6185	1	Diode, Stop	16	332-4400	3	Tie
8	167-1654	2	Plug, Spark				
9	187-6162	2	Cap, Spark Plug				

Intake



REF NO.	PART NO.	QTY USED	PART DESCRIPTION	REF NO.	PART NO.	QTY USED	PART DESCRIPTION
1	140-4119	1	Resonator, Air Intake (Spec A Only)	4	508-0208-04	2	Bushing, Snap
2	140-4120	1	Resonator, Air Intake (Spec A Only)	5	870-2228	8	Clip, Nut
3	503-2947-01	1	Hose, Intake (Spec A Only)	6	821-2033	8	Screw, Hex Flanged Head (M6 x 1 x 16mm)

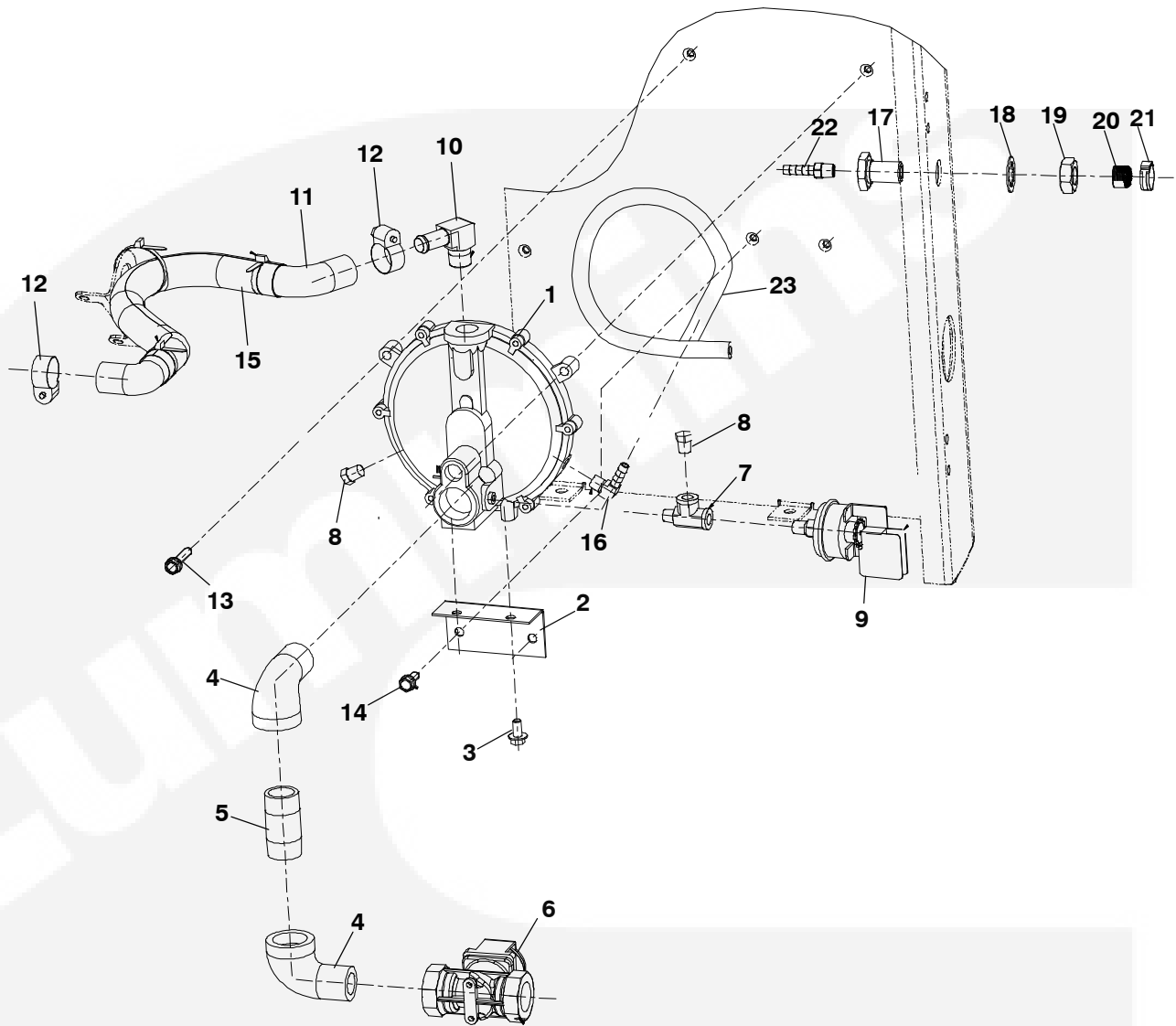
Muffler



REF NO.	PART NO.	QTY USED	PART DESCRIPTION
1	870-2065-02	2	Nut, Hex Flange (M6 x 1mm)
2	155-4679	1	Muffler
3	821-2033	2	Screw, Hex Flange Head (M6 x 1 x 16mm)
4	870-0557	4	Nut, Hex Flange (M8 x 1.25mm)
5	154-3112	2	Gasket, Exhaust Manifold

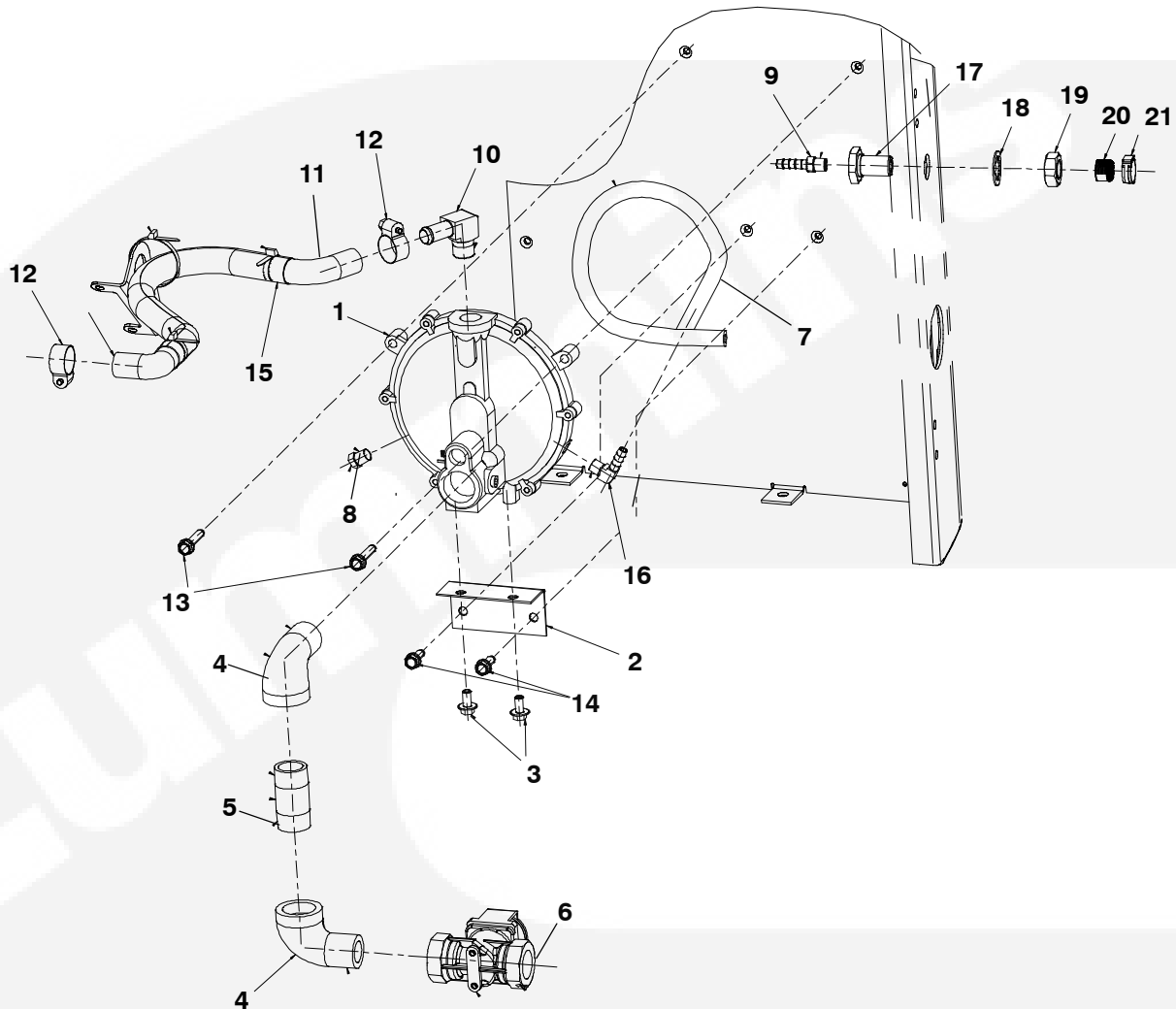


Fuel System



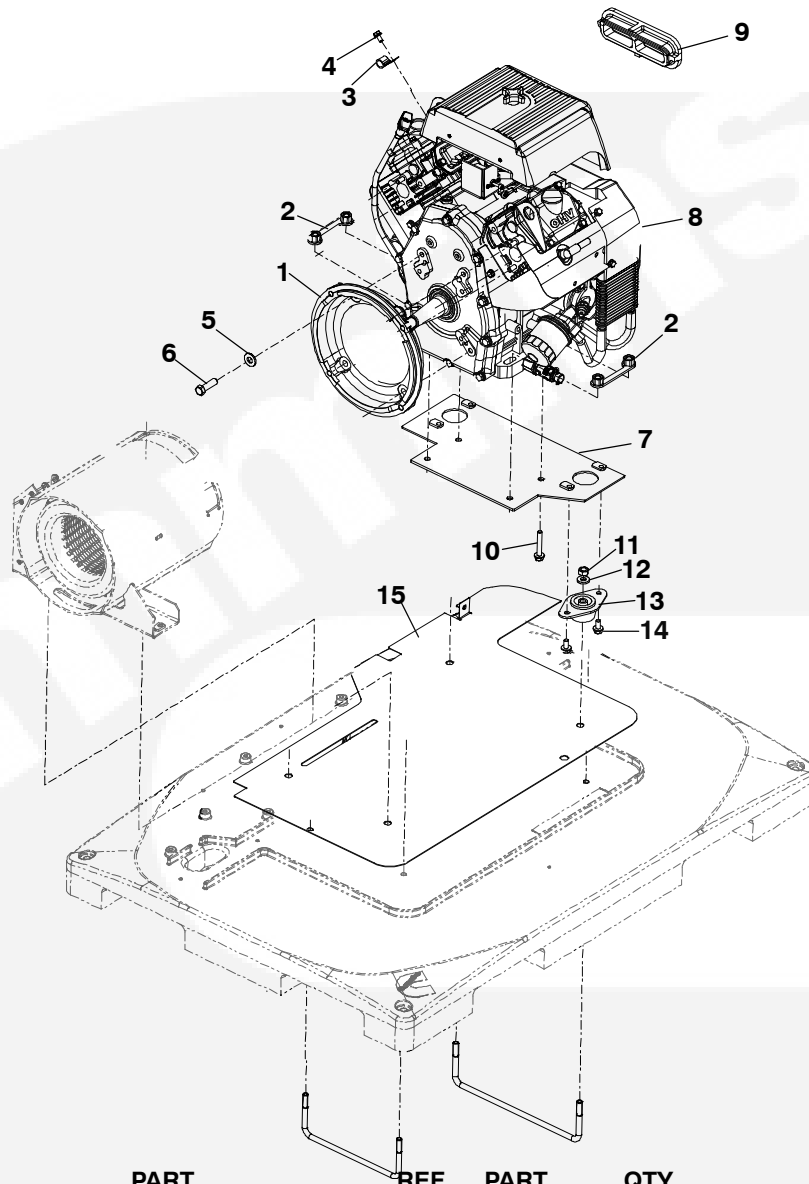
REF NO.	PART NO.	QTY USED	PART DESCRIPTION	REF NO.	PART NO.	QTY USED	PART DESCRIPTION
1	148-1355	1	Regulator, Fuel (Vapor)	13	815-0941-04	2	Screw, Hex Thread Form (M6 x 1 x 16mm)
2	148-1353	1	Bracket, Fuel Regulator	14	815-0941-03	2	Screw, Hex Thread Form (M6 x 1 x 16mm)
3	821-0010	2	Screw, Locking Head (1/4-20NC x .5")	15	898-1196-03	1	Sleeving, Convoluted
4	505-0051	2	Elbow, Street 90 (3/4 NPT x 2.00")	16	502-1353-02	1	Elbow, 90 Pipe
5	505-0085	1	Nipple, Pipe (3/4 NPT x 2.00)	17	502-1296-02	1	Bulkhead, Fitting
6	148-1346	1	Solenoid, Duty	18	854-0028	1	Washer, IT Locking (5/8ID 1.07OD)
7	502-1226	1	Tee, Male Run	19	868-0007	1	Nut, Hex Jam (5/8-18UNF)
8	502-0028	2	Plug, Pipe Hex Head (1/8NPT)	20	148-1158	1	Screen, Vent
9	193-0611	1	Sensor, Pressure	21	503-1951-20	1	Clamp, Hose
10	502-0237	1	Elbow, 90 Degree Hose	22	502-1367-01	1	Connector, Hose
11	503-2952	1	Hose, Fuel (LPG & Natural Gas)	23	503-2988	1	Hose, Vent
12	503-0976	2	Clamp, Hose				

Fuel System



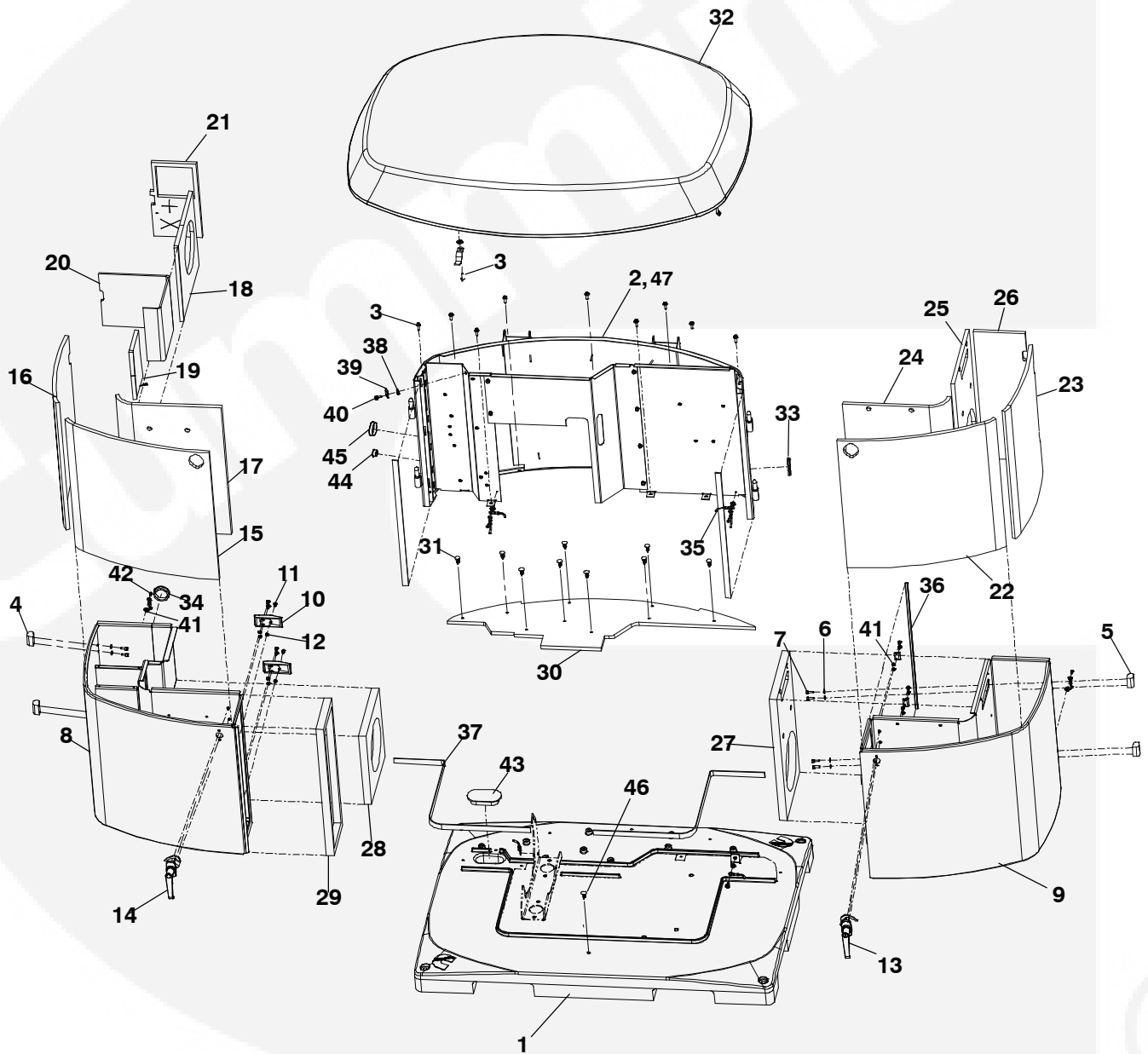
REF NO.	PART NO.	QTY USED	PART DESCRIPTION	REF NO.	PART NO.	QTY USED	PART DESCRIPTION
1	148-1355	1	Regulator, Fuel (Vapor)	13	815-0941-04	2	Screw, Hex Thread Form (M6 x 1 x 16mm)
2	148-1353	1	Bracket, Fuel Regulator	14	815-0941-03	2	Screw, Hex Thread Form (M6 x 1 x 16mm)
3	821-0010	2	Screw, Locking Head (1/4-20NC x .5")	15	898-1196-03	1	Sleeving, Convoluted
4	505-0051	2	Elbow, Street 90 (3/4 NPT x 2.00")	16	502-1353-02	1	Elbow, 90 Pipe
5	505-0085	1	Nipple, Pipe (3/4 NPT x 2.00)	17	502-1296-02	1	Bulkhead, Fitting
6	148-1346	1	Solenoid, Duty	18	854-0028	1	Washer, IT Locking (5/8ID 1.07OD)
7	503-2988	1	Hose, Vent	19	868-0007	1	Nut, Hex Jam (5/8-18UNF)
8	502-0028	2	Plug, Pipe Hex Head (1/8NPT)	20	148-1158	1	Screen, Vent
9	502-1367-01	1	Connector, Hose	21	503-1951-20	1	Clamp, Hose
10	502-0237	1	Elbow, 90 Degree Hose				
11	503-2952	1	Hose, Fuel (LPG & Natural Gas)				
12	503-0976	2	Clamp, Hose				

Mounting



REF NO.	PART NO.	QTY USED	PART DESCRIPTION	REF NO.	PART NO.	QTY USED	PART DESCRIPTION
1	231-1046	1	Adapter, Generator	9	140-4068	1	Adapter, Air Cleaner
2	403-6779-02	2	Bracket, Engine (2 Hole)				
3	518-0515	2	Clamp, Hose				
4	815-0954-01	5	Screw, Flange Head Mach (M8 x 1.25 x 16mm)	10	821-2067	4	Screw, Flange (M8 x 1.5 x 55mm)
5	526-0249-01	4	Washer, Flat (7/16)	11	870-2056	4	Nut, Hex (M10 x 1.5mm)
6	800-0073	4	Screw, Hex Head Cap (7/16-14NC x 1.5mm)	12	526-0030	4	Washer, Flat (3/8")
7	403-6551-03	1	Plate, Engine Mount	13	402-0728	2	Isolator, Vibration
8	100-3968	1	Engine	14	815-0954-01	5	Screw, Flange Head Mach (M8 x 1.25 x 16mm)
				15	404-0329-02	1	Panel, Enclosure (Shield)

Enclosure



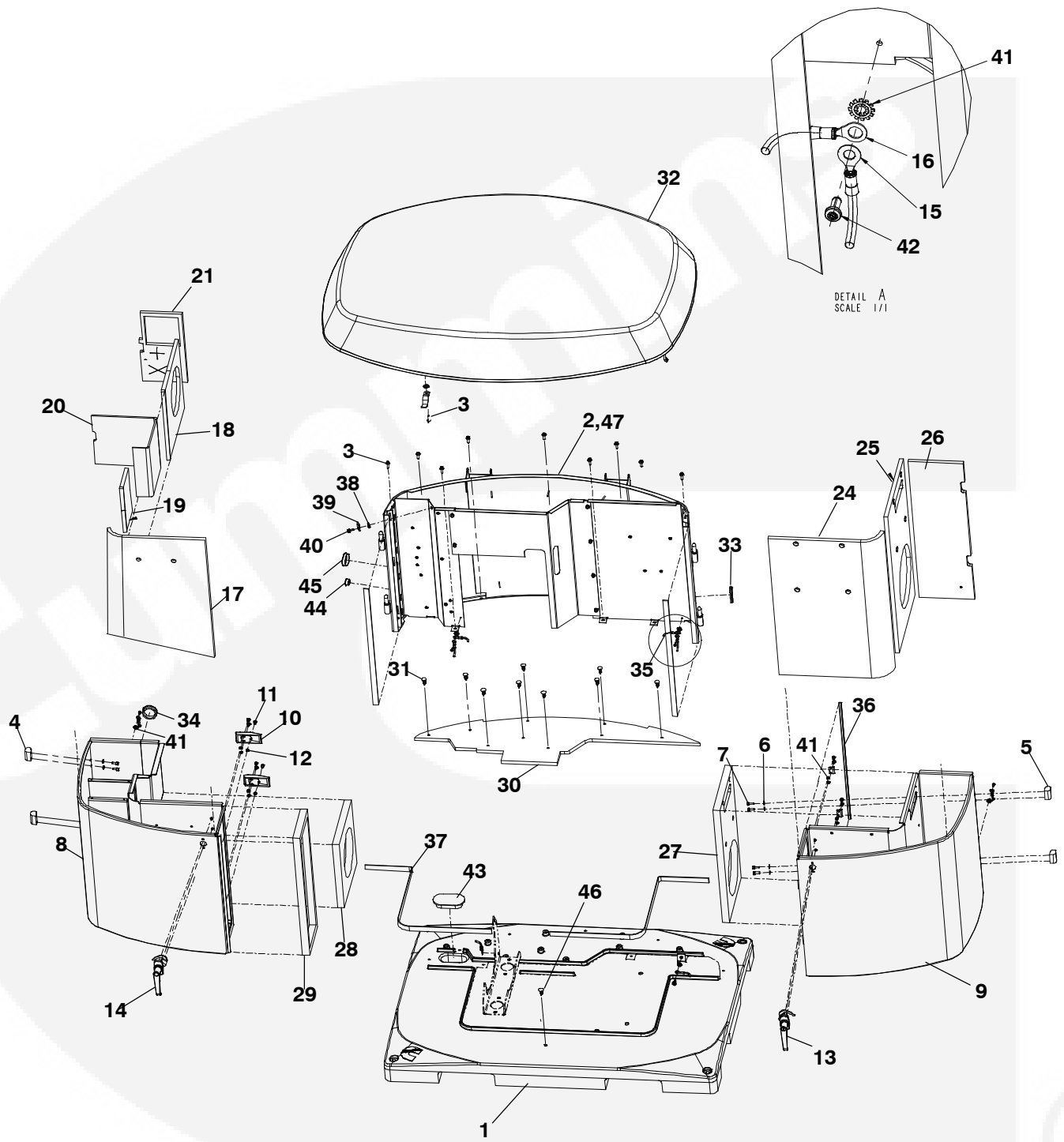
Enclosure

REF NO.	PART NO.	QTY USED	PART DESCRIPTION	REF NO.	PART NO.	QTY USED	PART DESCRIPTION
1	414-2109	1	Pallet, Shipping	23	404-0053	1	#Insulation, Door (Right Out Side)
2	404-0146	1	Enclosure, Rear Panel	24	404-0054	1	Insulation, Door (Right Inner Front)
3	821-2033	10	Screw, Locking Flange (M6 x 1 x 16mm)	25	404-0055	1	Insulation, Door (Right Inner Side)
4	406-1184	2	Hinge (Right Hand)	26	404-0056	1	Insulation, Door (Right End Panel)
5	406-1183	2	Hinge (Left Hand)	27	404-0064	1	Insulation, Door (Engine)
6	526-2080	16	Washer, Flat (M6)	28	404-0065	1	Insulation, Door (Alternator)
7	725-1027	16	Screw, Socket Head Cap (M6 x 1 x 16mm)	29	404-0066	1	Insulation, Door
8	405-9828	1	Enclosure, Left Door	30	404-0070	1	Shield, Exhaust (Base Heat)
9	405-9827	1	Enclosure, Right Door	31	518-0776	9	Clip, Retaining
10	406-1185	2	Latch, Adjustable Draw	32			Enclosure, Cover (See Next Page)
11	815-0364	10	Screw, RH (M5 x 0.8 x 10mm)	33	508-0051	1	Grommet
12	870-0131	10	Nut, Sems Etit (#10-32)	34	508-0208-03	1	Bushing, Snap
13		1	Handle, Door Lockable	35	895-0432-01	2	Door, Weather Strip
	xxx-xxxx	1	Key	36	895-0431-01	1	Strip, Weather (D Gasket)
	406-1163	1	Hook, Latch	37	895-0432-02	2	Door, Weather Strip
	406-1174	1	Handle, Door	38	856-0006	2	Washer, Etit Locking (1/4")
14			Handle, Door Non Lockable	39	337-3467	1	Strap, Bond
	406-1164	1	Hook, Latch	40	815-0941-03	2	Screw, Hex Washer Head Thread Form (M6 x 1 x 16mm)
	406-1176	1	Handle, Door	41	853-0003	5	Washer, Etit Locking (#10)
15	404-0047	1	#Insulation, Door (Left Outer Front)	42	823-0002-04	4	Screw, Pan Head Torx Thread Form (M4x .7 x 12mm)
16	404-0048	1	#Insulation, Door (Left Outer Side)	43	508-1296	1	Grommet (Plug)
17	404-0049	1	Insulation, Door (Left Inner Front)	44	517-0137	1	Plug, Hole
18	404-0050	1	Insulation, Door (Left Inner Side)	45	517-0138-07	1	Plug, Hole
19	404-0165	1	Insulation, Door (Left Inner Side Top)	46	406-1197-01	1	Screw, Panel (6mm)
20	404-0068	1	Insulation, Door (Battery)	47	404-0276	1	Insulation, Back
21	404-0051	1	Insulation, Door (Left End Panel)	48	A026G567	1	Key, Spare (Door) (Not Shown)
22	404-0052	1	#Insulation, Door (Right Outer Front)				

- Parts are for Spec A only



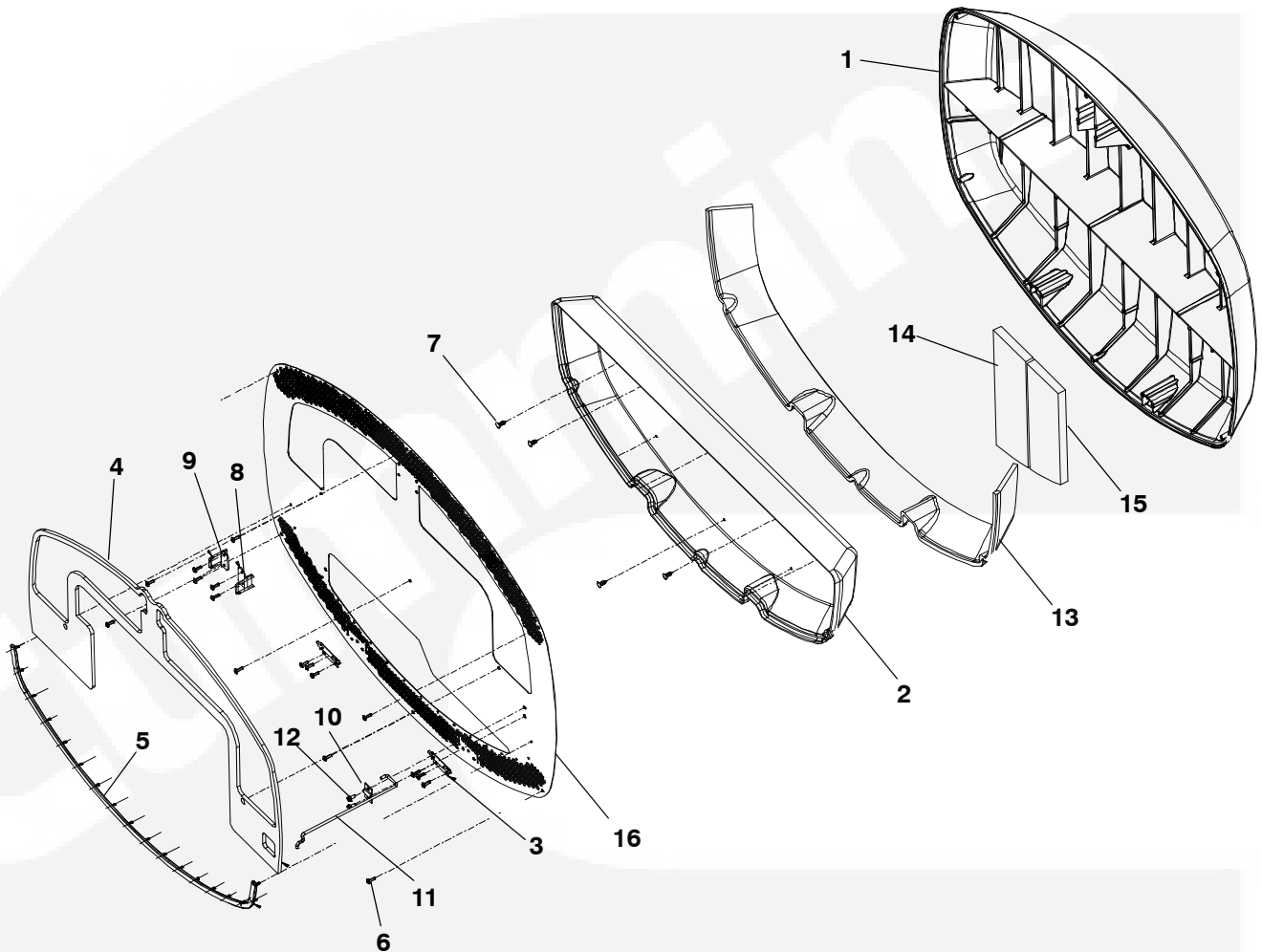
Enclosure Begin Spec C



Enclosure

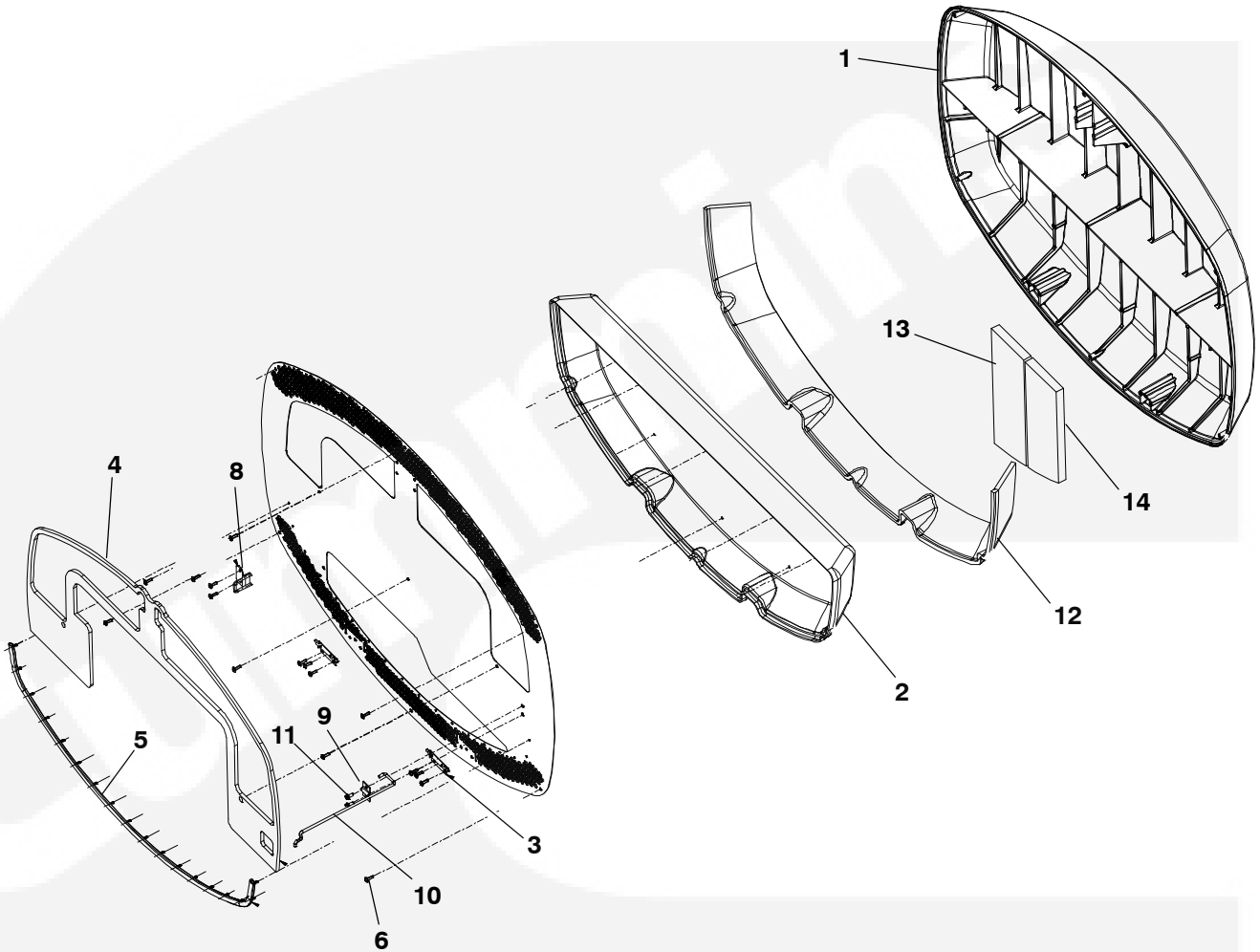
REF NO.	PART NO.	QTY USED	PART DESCRIPTION	REF NO.	PART NO.	QTY USED	PART DESCRIPTION
1	414-2109	1	Pallet, Shipping	22	A026G567	1	Key, Spare (Door) (Not Shown)
2	A028Z294	1	Enclosure, Rear Panel	23	226-4985	1	Lead
3	821-2033	10	Screw, Locking Flange (M6 x 1 x 16mm)	24	404-0054	1	Insulation, Door (Right Inner Front)
4	406-1184	2	Hinge (Right Hand)	25	404-0055	1	Insulation, Door (Right Inner Side)
5	406-1183	2	Hinge (Left Hand)	26	404-0056	1	Insulation, Door (Right End Panel)
6	526-2080	16	Washer, Flat (M6)	27	404-0064	1	Insulation, Door (Engine)
7	725-1027	16	Screw, Socket Head Cap (M6 x 1 x 16mm)	28	404-0065	1	Insulation, Door (Alternator)
8	405-9828	1	Enclosure, Left Door	29	404-0066	1	Insulation, Door
9	405-9827	1	Enclosure, Right Door	30	404-0070	1	Shield, Exhaust (Base Heat)
10	406-1185	2	Latch, Adjustable Draw	31	518-0776	9	Clip, Retaining
11	815-0364	10	Screw, RH (M5 x 0.8 x 10mm)	32	A028Z130	1	Enclosure, Cover (See Next Page)
12	870-0131	10	Nut, Sems Etit (#10-32)	33	508-0051	1	Grommet
13		1	Handle, Door Lockable	34	508-0208-03	1	Bushing, Snap
	xxx-xxxx	1	Key	35	895-0432-01	2	Door, Weather Strip
	406-1163	1	Hook, Latch	36	895-0431-01	1	Strip, Weather (D Gasket)
	406-1175	1	Handle, Door	37	895-0432-02	2	Door, Weather Strip
14			Handle, Door Non Lockable	38	856-0006	2	Washer, Etit Locking (1/4")
	406-1164	1	Hook, Latch	39	337-3467	1	Strap, Bond
	406-1176	1	Handle, Door	40	815-0941-03	2	Screw, Hex Washer Head Thread Form (M6 x 1 x 16mm)
15	226-4824-01	1	Lead	41	853-0003	3	Washer, Etit Locking (#10)
16	226-4985	1	Lead	42	819-1167-01	2	Screw, Pan Head Torx Thread Form (M4x .7 x 12mm)
17	404-0049	1	Insulation, Door (Left Inner Front)	43	508-1296	1	Grommet (Plug)
18	404-0050	1	Insulation, Door (Left Inner Side)	44	517-0137	1	Plug, Hole
19	404-0165	1	Insulation, Door (Left Inner Side Top)	45	517-0138-07	1	Plug, Hole
20	404-0068	1	Insulation, Door (Battery)	46	406-1197-01	1	Screw, Panel (6mm)
21	404-0051	1	Insulation, Door (Left End Panel)	47	404-0276	1	Insulation, Back

Enclosure Cover



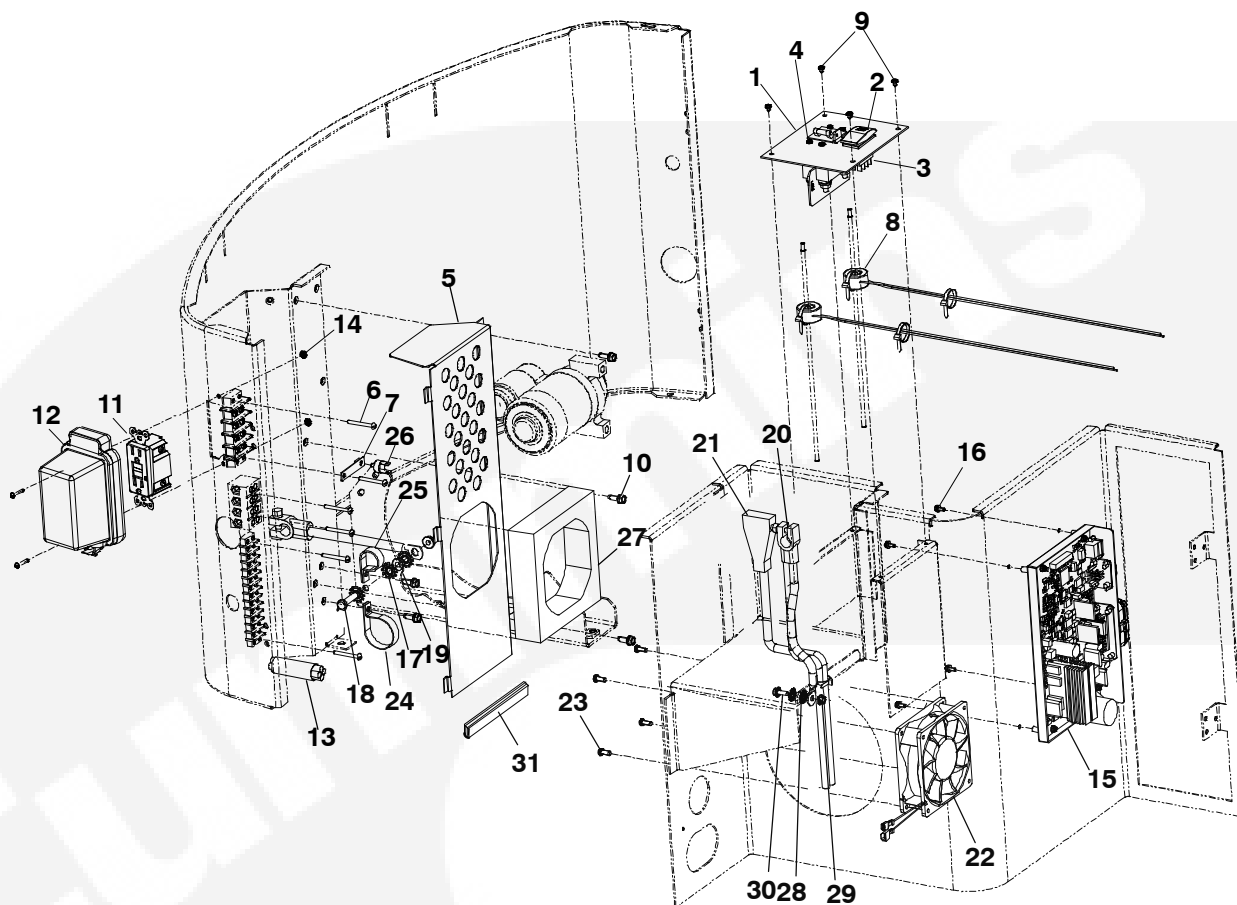
REF NO.	PART NO.	QTY USED	PART DESCRIPTION	REF NO.	PART NO.	QTY USED	PART DESCRIPTION
1	405-9992	1	Cover, Enclosure	10	404-0029-02	1	Enclosure (Support Rod Bracket)
2	404-0067	1	Insulation, Cover (Exhaust Side)	11	404-0027	1	Enclosure (Support Rod)
3	406-1188	2	Hinge, Spring	12	821-2033	2	Screw, Locking Flange (M6 x 1 x 16mm)
4	404-0069	1	Gasket, Enclosure (Top)	13	404-0601	1	Insulation, Cover (Edge)
5	404-0104	1	Gasket, Enclosure (Bulb)	14	404-0604	1	Insulation, Cover (Left)
6	406-1197-01	19	Screw, Panel (6mm)	15	404-0605	1	Insulation, Cover (Right)
7	518-0776	8	Clip, Retaining	16	A029M587	1	Cover
8	406-1194-02	1	Latch, Door (Right)				
9	406-1193-02	1	Latch, Door (Left) (Spec A Only)				

Enclosure Cover–Begin Spec C



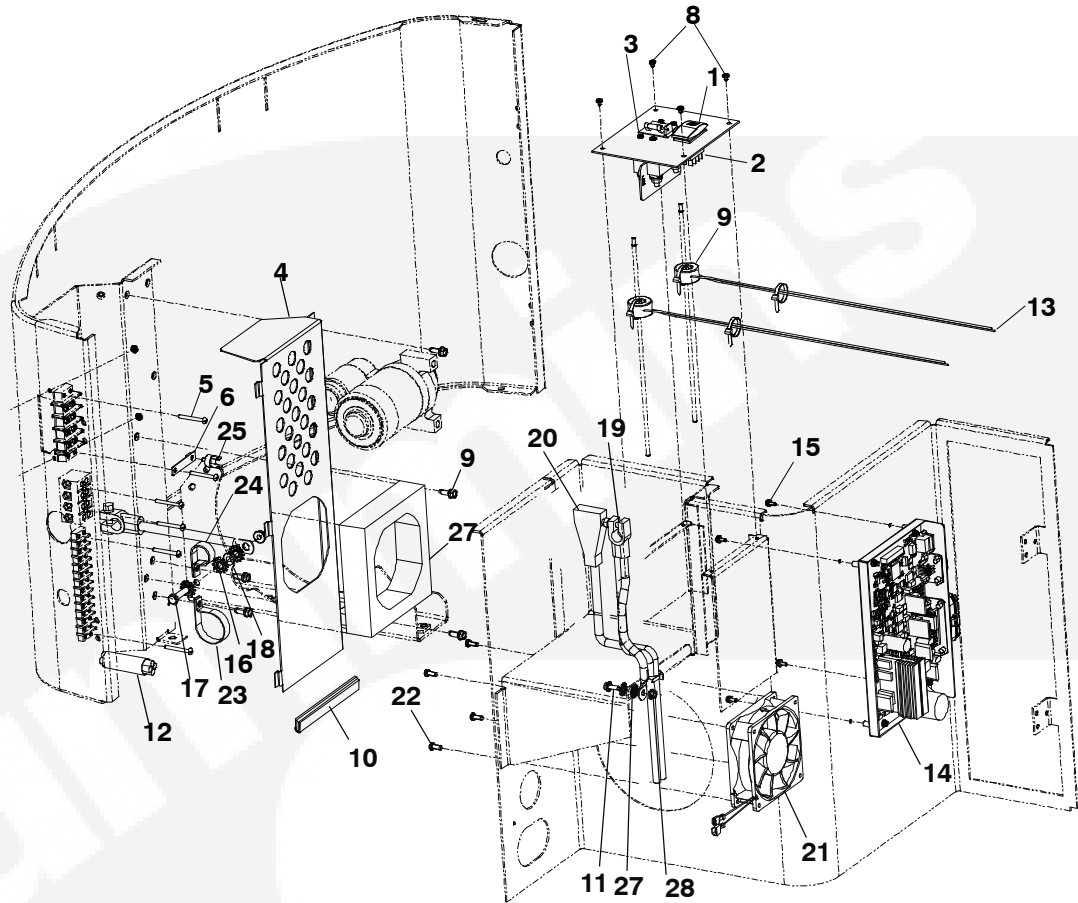
REF NO.	PART NO.	QTY USED	PART DESCRIPTION	REF NO.	PART NO.	QTY USED	PART DESCRIPTION
1	405-9992	1	Cover, Enclosure	9	404-0029-02	1	Enclosure (Support Rod Bracket)
2	A029M587	1	Cover, Enclosure (Base)	10	404-0027	1	Enclosure (Support Rod)
3	404-0067	1	Insulation, Cover (Exhaust Side)	11	821-2033	2	Screw, Locking Flange (M6 x 1 x 16mm)
4	406-1188	2	Hinge, Spring	12	404-0601	1	Insulation, Cover (Edge)
5	404-0069	1	Gasket, Enclosure (Top)	13	404-0604	1	Insulation, Cover (Left)
6	404-0104	1	Gasket, Enclosure (Bulb)	14	404-0605	1	Insulation, Cover (Right)
7	406-1197-01	17	Screw, Panel (6mm)				
8	406-1194-02	1	Latch, Door (Right)				

Control (Spec A-B)



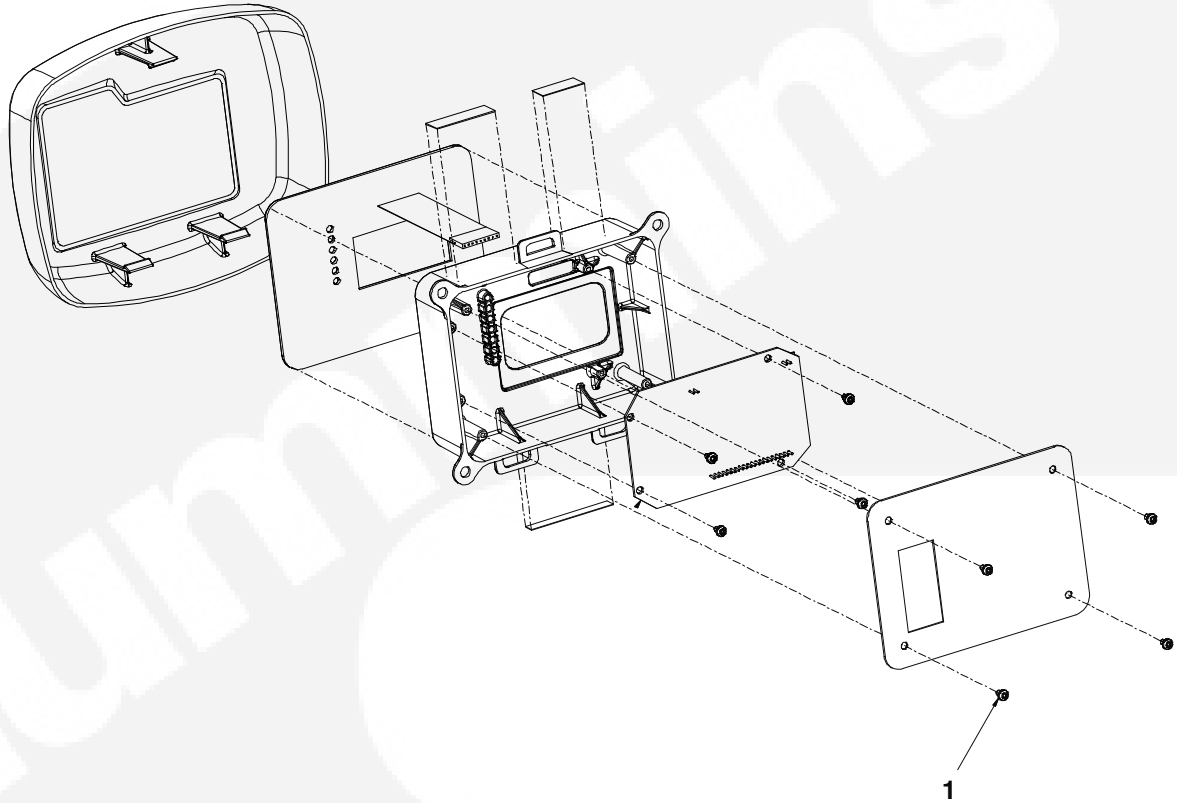
REF NO.	PART NO.	QTY USED	PART DESCRIPTION	REF NO.	PART NO.	QTY USED	PART DESCRIPTION
1	319-6777-02	1	Panel, Display	18	800-0030	1	Screw, Hex Head Cap (5-16-18NC x 1.25")
2	308-1092	1	Switch, Rocker (Adapter Plug)	19	870-0257	2	Nut, Self Locking (5/16-18)
3	320-2462	1	Breaker, Circuit (C Series)	20	416-1367-01	1	Cable , Battery
4	815-0549	4	Screw, Xrec Pan Head ET (#6-32 x .25mm)	21	416-1367-02	1	Cable , Battery
5	319-6454-02	1	Cover, Terminal	22	205-0357	1	Fan
6	812-0087	6	Screw, Slotted Round Head (8-32 x 1.5")	23	819-1167-01	4	Screw, Pan Head Torx Thread Form (#10-14 x .50")
7	193-0637-02	1	Bracket, Sensor	24	518-0548-44	1	Clamp, Hose
8	315-0861	2	Transformer, Current	25	332-1553	1	Clamp, Loop
9	823-0002-01	4	Screw, Pan Head Torx Thread Form (M4 x .7 x 6mm)	26	309-0597-01	1	Switch, High Exhaust Temperature
10	815-0941-03	4	Screw, Hex Washer Head Thread Form (M6 x 1 x 16mm)	27	404-0368	1	Gasket, Enclosure (Fan)
11	323-2536	1	Receptacle, Duplex (GFCI) (Spec A Only)	28	856-0006	2	Washer, ETIT Locking (1/4")
12	330-0213	1	Cover, Receptacle (GFCI) (Spec A Only)	29	870-2065-02	1	Nut, Locking Flange (M6)
13	-	1	Harness, Engine (See Engine Harness Section)	30	821-2033	1	Screw, Locking Flange (M6 x 1 16mm)
14	870-0183	2	Nut, Sems ET (#6-32)	31	508-1313	1	Edging
15	300-6386	1	PCB (Control)				
16	819-1165-02	4	Screw, Pan Head Torx (M4)				
17	856-0008	3	Washer, ETIT Locking (5/16")				

Control - Begin Spec C



REF NO.	PART NO.	QTY USED	PART DESCRIPTION	REF NO.	PART NO.	QTY USED	PART DESCRIPTION
1	308-1092	1	Switch, Rocker (Adapter Plug)				(M4)
2	320-2462	1	Breaker, Circuit (C Series)	16	856-0008	2	Washer, ETIT Locking (5/16")
3	815-0549	4	Screw, Xrec Pan Head ET (#6-32 x .25mm)	17	800-0030	1	Screw, Hex Head Cap (5-16-18NC x 1.25")
4	319-6454-02	1	Cover, Terminal	18	870-0257	4	Nut, Self Locking (5/16-18)
5	819-1175	6	Screw, Slotted Round Head (8-32 x 1.5")	19	416-1367-01	1	Cable , Battery
6	193-0637-02	1	Bracket, Sensor	20	416-1367-02	1	Cable , Battery
7	A028X144	2	Transformer, Current	21	205-0357	1	Fan
8	823-0002-01	4	Screw, Pan Head Torx Thread Form (M4 x .7 x 6mm)	22	819-1167-01	4	Screw, Pan Head Torx Thread Form (#10-14 x .50")
9	815-0941-03	4	Screw, Hex Washer Head Thread Form (M6 x 1 x 16mm)	23	518-0548-44	1	Clamp, Hose
10	508-1313	1	Edging	24	332-1553	1	Clamp, Loop
11	821-2033	1	Screw, Locking Flange (M6 x 1 16mm)	25	309-0597-01	1	Switch, High Exhaust Temperature
12	338-4902	1	Harness, Engine (See Engine Harness Section)	26	404-0368	1	Gasket, Enclosure (Fan)
13	332-1992	2	Terminal, Receptacle	27	856-0006	1	Washer, ETIT Locking (1/4")
14	300-6386	1	PCB (Control)	28	870-2065-02	1	Nut, Locking Flange (M6)
15	819-1165-02	4	Screw, Pan Head Torx				

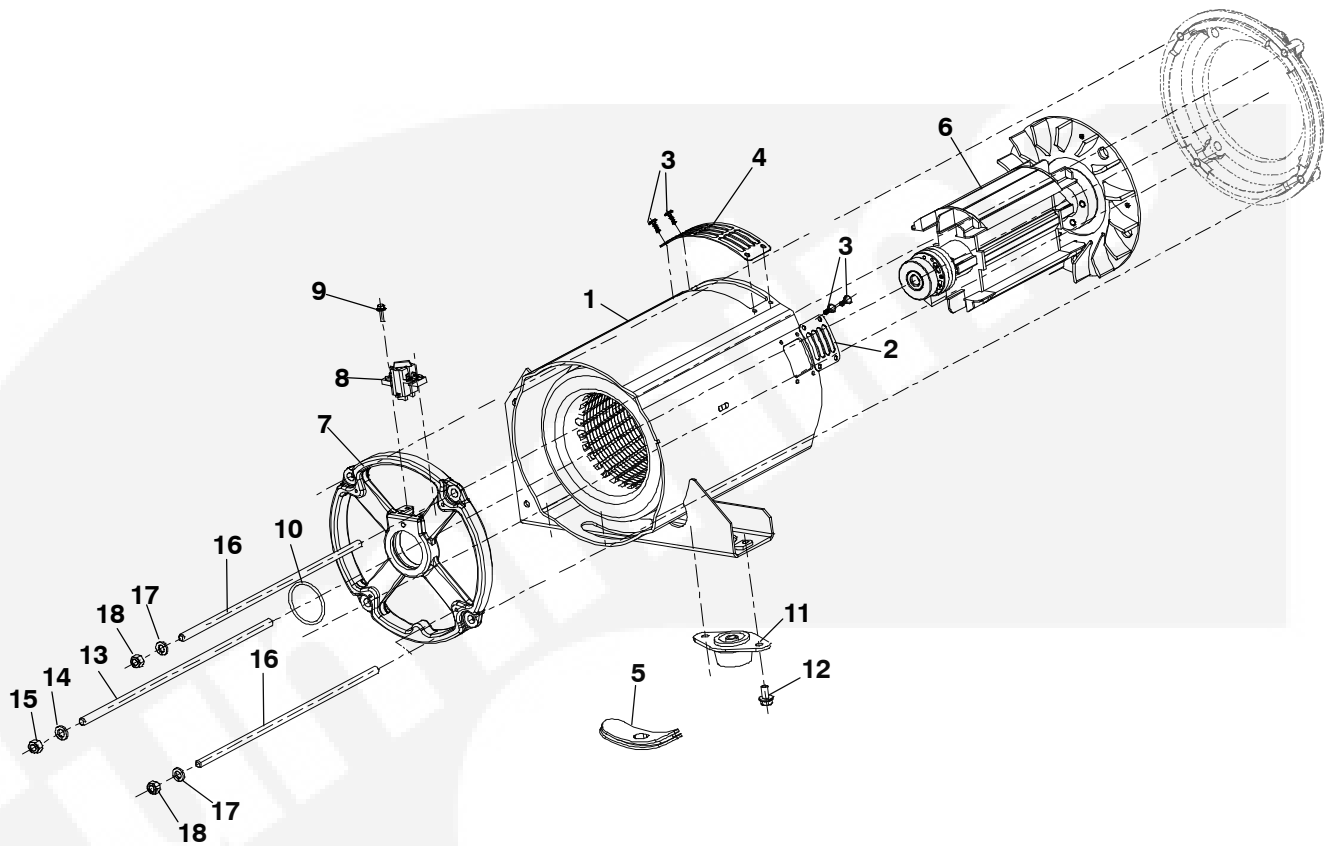
Control-Assy



REF NO.	PART NO.	QTY USED	PART DESCRIPTION	REF NO.	PART NO.	QTY USED	PART DESCRIPTION
1	823-0001-01	8	Screw, (M3 x 0.5 x 6)				

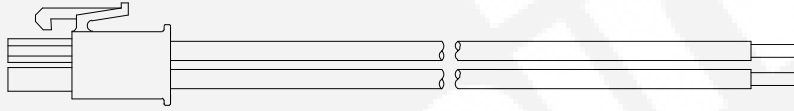


Generator



REF NO.	PART NO.	QTY USED	PART DESCRIPTION	REF NO.	PART NO.	QTY USED	PART DESCRIPTION
1	220-4689-02	1	Stator (Generator)	10	509-0196	1	O'Ring
2	232-3651-01	1	Guard, Fan (Small)	11	402-0728	2	Isolator, Vibration
3	518-0649	16	Clip, Push On	12	815-0954-01	4	Screw, Flanged Head Mach (M8 x 1.25 x 20mm)
4	232-3632-01	3	Guard, Fan (Large)	13	520-1019-02	1	Stud
5	508-1085-01	1	Grommet, Lead Out	14	526-0249-01	1	Washer, Flat
6	201-3583-05	1	Rotor (Generator Fan)	15	862-0004	1	Nut, Hex Heavy (7/16-14UNC)
7	211-0447	1	End, Bell Generator	16	520-0998-03	4	Stud
8	212-1285-S0	1	Block, Generator Brush	17	850-0050	4	Washer, Split Lock (3/8")
9	821-6001-03	2	Screw, Hex Head (M5 x 0.8 x 16mm)	18	862-0003	4	Nut, Hex Heavy (3/8-16UNC)

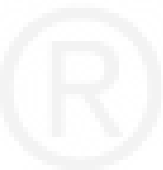
Harness



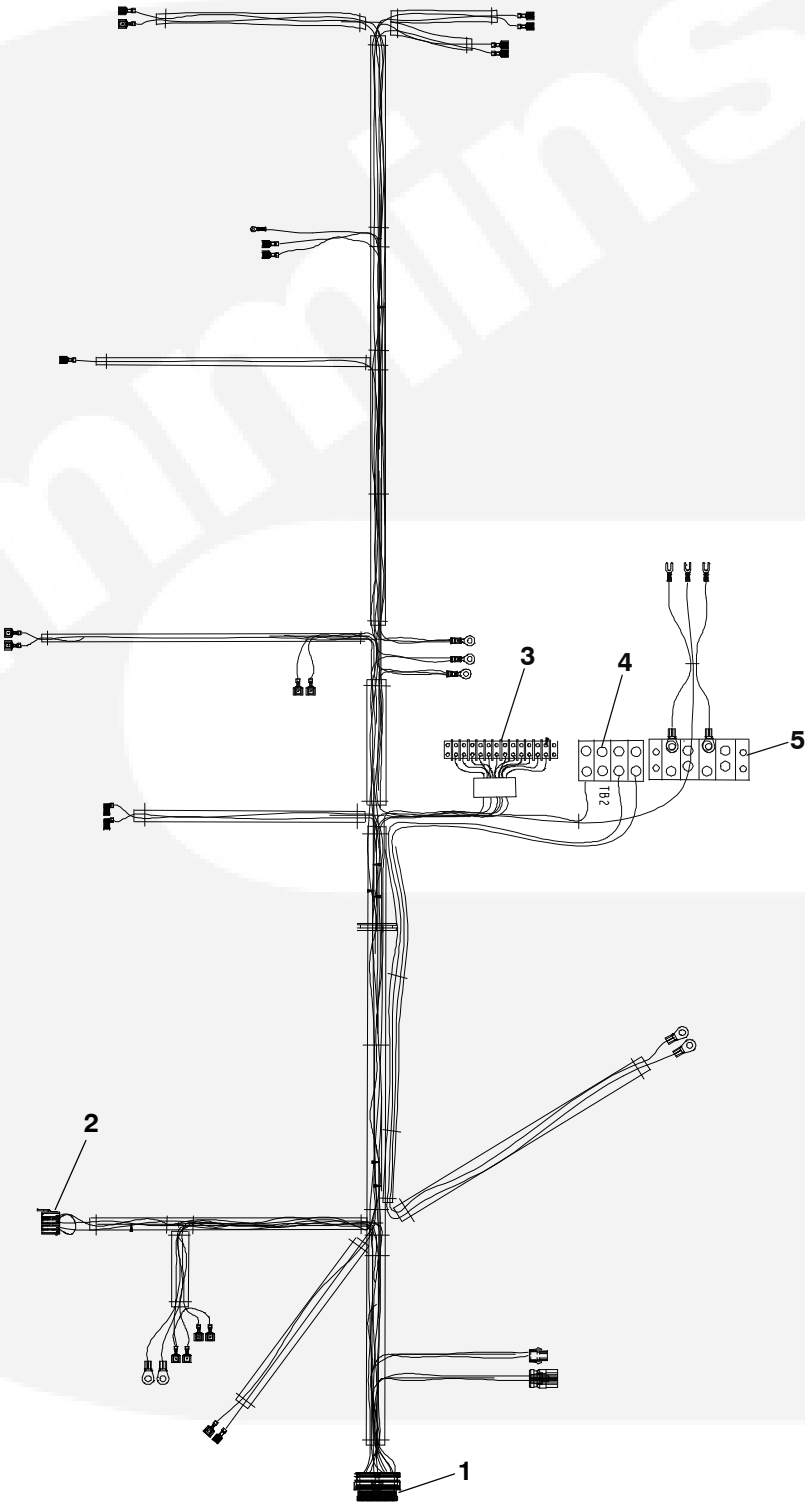
REF NO.	PART NO.	QTY USED	PART DESCRIPTION
1	338-5023	1	Harness, Remote
	323-2011	1	Connector, Plug
	323-2063	5	Contact, Socket



“Blank Page”

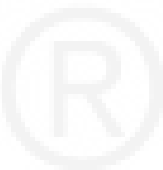


Engine Harness

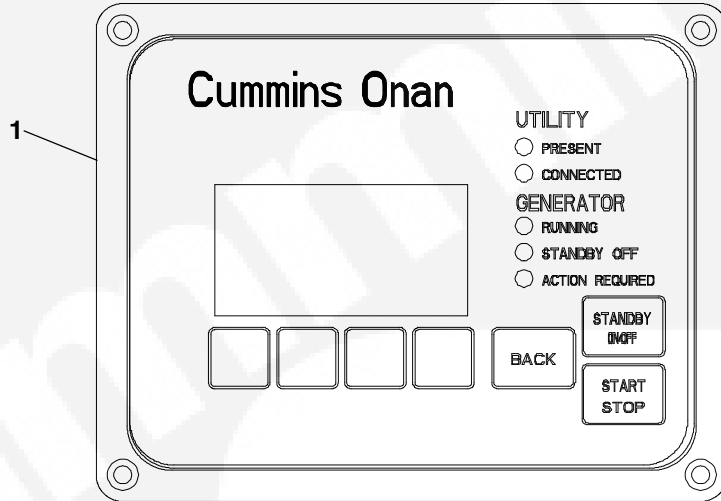


Engine Harness

REF NO.	PART NO.	QTY USED	PART DESCRIPTION	REF NO.	PART NO.	QTY USED	PART DESCRIPTION
1	323-1819-01	1	Connector, Plug (35 Pin)	* - All Parts included in Harness 338-4902			
2	308-1019	1	Connector, Switch (8 Pin)				
3	332-0607	1	Block, Terminal				
4	332-3531-03	1	Block, Terminal				
5	332-0254	1	Block, Terminal				



Remote Control



REF NO.	PART NO.	QTY USED	PART DESCRIPTION
1	300-6385	1	Assy, Control Panel



Labels

REF NO.	PART NO.	QTY USED	PART DESCRIPTION
1	98-8778	1	Label, Information Package (Included in Package*)
	98-4732	1	*Label, Warning (High Voltage)
	98-8875	1	*Label, Information (Unbalanced Load)
	98-8464	1	*Label, Warning (Service Door)
	98-8833	1	*Label, Dangar (Exposive Gases)
	98-8832	1	*Label, Caution (Rotating Parts)
	98-8831	1	*Label, Warning (Hazardous Voltage)
	98-7868	1	*Label
	98-8777	1	*Label, Information (Start / Stop)
	98-5759	1	*Label, Warning
	98-7735	1	*Label, Cover (Danger)
	98-7877	1	*Label, Battery (Warning)
	98-8774	1	*Label, Information (WD - Control)
	98-8773	1	*Label, Information (120V Accy. Conn.)
	98-8772	1	*Label, Information (TBI)
	98-7498-02	1	*Label, Warning Voltage
	98-7737-01	1	*Label, Underwriters Laboratory
	98-8751	1	*Label, Information
	98-8750	1	*Label, Information (Gas Pressure)
	98-8830	1	*Label, Caution (Hot Surfaces)
	98-8749	1	*Label, Logo



Numerical Index

<u>Part No.</u>	<u>Page</u>	<u>Part No.</u>	<u>Page</u>	<u>Part No.</u>	<u>Page</u>	<u>Part No.</u>	<u>Page</u>
098-8778, 35		134-5383, 10		187-6104, 11		323-1819-01, 33	
100-3968, 7, 19		140-4068, 19		187-6105, 11		323-2011, 30	
101-0860, 7		140-4119, 15		187-6106, 11		323-2063, 30	
101-0864, 7		140-4120, 15		187-6108, 11		323-2536, 26	
102-1544, 13		140-4184, 9		187-6109, 11		330-0200, 27	
102-1558, 7		140-4276, 9		187-6110, 11		330-0213, 26	
102-1559, 7		140-4277, 9		187-6111, 11		332-0254, 33	
102-1560, 13		146-0888, 12		187-6112, 11		332-0607, 33	
102-1561, 13		146-0901, 12		187-6157, 14		332-1553, 26, 27	
104-2112, 7		148-1158, 17, 18		187-6160, 14		332-1992, 27	
104-2113, 14		148-1346, 17, 18		187-6162, 14		332-3531-03, 33	
104-2150, 8		148-1353, 17, 18		187-6184, 14		332-4400, 14	
105-0770, 9		148-1355, 17, 18		187-6185, 14		337-3467, 21, 23	
110-4004, 7		148-1385, 12		187-6194, 11		338-4902, 27, 33	
110-4005, 7		150-2895, 12		187-6228, 7		338-5023, 30	
110-4073, 7		154-3112, 16		187-6236, 7		338-5075, 14	
110-4074, 7		154-3250, 9		187-6250, 8		402-0728, 19, 29	
110-4075, 7		154-3251, 12		187-6251, 8		403-4365, 13	
110-4076, 7		154-3280, 9		187-6255, 9		403-6551-03, 19	
110-4077, 7		155-4679, 16		187-6259, 9		403-6779-02, 19	
110-4078, 7, 13		166-0907, 14		193-0611, 17		403-7205, 7	
110-4079, 7		167-1654, 14		193-0637-02, 26, 27		404-0027, 24, 25	
110-4080, 9		187-6002, 7		201-3583-05, 29		404-0029-02, 24, 25	
110-4081, 9		187-6008, 7		205-0356, 10		404-0047, 21, 23	
112-0324, 8		187-6016, 7		205-0357, 26, 27		404-0048, 21	
113-0356, 8		187-6017, 7		211-0447, 29		404-0049, 21, 23	
114-0447, 8		187-6025, 7		212-1285-S0, 29		404-0050, 21, 23	
114-0448, 8		187-6026, 7		220-4689-02, 29		404-0051, 21, 23	
115-0558, 9		187-6028, 7		226-4985, 23		404-0052, 21	
115-0559, 9		187-6030, 7		231-1046, 19		404-0053, 21	
115-0560, 9		187-6032, 7		232-3632-01, 29		404-0054, 21, 23	
115-0562, 9		187-6043, 8		232-3651-01, 29		404-0055, 21, 23	
115-0564, 7		187-6045, 8		232-4219, 8		404-0056, 21, 23	
115-0565, 7		187-6050, 8		300-6385, 34		404-0064, 21, 23	
115-0566, 9		187-6052, 8		300-6386, 26		404-0065, 21, 23	
122-0925, 13		187-6058, 9		308-1019, 33		404-0066, 21, 23	
123-2358, 11		187-6059, 9		308-1092, 26, 27		404-0067, 24, 25	
123-2359, 11		187-6060, 9		309-0597-01, 26, 27		404-0068, 21, 23	
123-2360, 11		187-6067, 9, 14		309-0724, 7		404-0069, 24, 25	
123-2416, 7		187-6071, 9		315-0861, 26		404-0070, 21, 23	
134-5380, 10		187-6097, 10		319-6454-02, 26, 27		404-0104, 24, 25	
134-5381, 10		187-6099, 10		319-6777-02, 26		404-0146, 21	
134-5382, 10		187-6103, 11		320-2462, 26, 27		404-0165, 21, 23	

Numerical Index

<u>Part No.</u>	<u>Page</u>	<u>Part No.</u>	<u>Page</u>	<u>Part No.</u>	<u>Page</u>	<u>Part No.</u>	<u>Page</u>
404-0276,	21, 23	503-0976,	17, 18	518-0810,	7	823-0001-01,	28
404-0329-02,	19	503-1951-20,	17, 18	520-0998-03,	29	823-0002-01,	26, 27
404-0368,	26, 27	503-2151,	13	520-1019-02,	29	823-0002-04,	21
404-0601,	24, 25	503-2947-01,	15	526-0030,	19	850-0050,	29
404-0604,	24, 25	503-2952,	17, 18	526-0249-01,	19, 29	853-0003,	21, 23
404-0605,	24, 25	503-2988,	17, 18	526-2080,	21, 23	854-0028,	17, 18
405-3331-03,	25	503-3081,	7	725-1027,	21, 23	856-0006,	21, 23, 26, 27
405-9827,	21, 23	503-3083,	13	800-0030,	26, 27	856-0008,	26, 27
405-9828,	21, 23	505-0051,	17, 18	800-0073,	19	860-2123,	8
405-9992,	24, 25	505-0085,	17, 18	800-6361,	7	862-0003,	29
406-1163,	21, 23	505-2506,	7	800-6498,	9, 10, 13	862-0004,	29
406-1164,	21, 23	505-2507,	7	800-6499,	10, 14	868-0007,	17, 18
406-1174,	21	505-2508,	7	800-6500,	7, 10	870-0131,	21, 23
406-1175,	23	505-2509,	13	800-6501,	14	870-0183,	26
406-1176,	21, 23	507-0040,	14	800-6503,	14	870-0257,	26, 27
406-1183,	21, 23	508-0051,	21, 23	812-0081,	12	870-0557,	16
406-1184,	21, 23	508-0208-03,	21, 23	812-0087,	26	870-2056,	19
406-1185,	21, 23	508-0208-04,	15	815-0364,	21, 23	870-2065-02,	16
406-1188,	24, 25	508-1085-01,	29	815-0549,	26, 27	870-2228,	15
406-1193-02,	24	508-1296,	21, 23	815-0941-03,	17, 18, 21, 23, 26, 27	895-0431-01,	21, 23
406-1194-02,	24, 25	508-1313,	26, 27	815-0941-04,	17, 18	895-0432-01,	21, 23
406-1197-01,	21, 23, 24, 25	509-0196,	29	815-0954-01,	19, 29	895-0432-02,	21, 23
414-2109,	21, 23	509-0367,	11	815-1590,	14	898-1196-03,	17, 18
416-1367-01,	26, 27	509-0487,	7	815-1591,	12	A026G567,	21, 23
416-1367-02,	26, 27	509-0490,	13	819-1165-02,	26, 27	A028X144,	27
501-1034,	13	517-0137,	21, 23	819-1167-01,	23, 26, 27	A028Z130,	23
501-1035,	13	517-0138-07,	21, 23	819-1175,	27	A028Z294,	23
502-0028,	17, 18	517-0442,	7	821-0010,	17, 18	A029A701,	27
502-0237,	17, 18	518-0515,	19	821-2033,	15, 16, 21, 23, 24, 25	A029C360,	13
502-1226,	17	518-0548-44,	26, 27	821-2067,	19	A029C466,	13
502-1296-02,	17, 18	518-0649,	29	821-6001-03,	29	A029M587,	24
502-1353-02,	17, 18	518-0776,	21, 23, 24				
502-1367-01,	17, 18						

Cummins Onan

Cummins Power Generation

1400 73rd Ave. NE
Minneapolis, MN 55432 USA

Phone 1 763 574 5000

Toll-free 1 800 888 6626

Fax 1 763 574 5298

Email www.cumminsonan.com/contact

www.cumminsonan.com

Cummins®, Onan®, the "C" logo, and "Performance you rely on." are trademarks of Cummins Inc.

©2011 Cummins Power Generation, Inc. All rights reserved.

